



MONTHLY CLIMATE ASSESSMENT AND OUTLOOK (El Niño Watch)

Issued: 08 April 2026

OVERVIEW

ENSO-neutral conditions are present in the tropical Pacific and could persist in June-July-August 2026 season. However, most models reflect, El Niño is likely to emerge (62% chance) and can continue through at least the first quarter of 2027.



As the warm and dry season persists, the public and all concerned government agencies are urged to sustain precautionary measures to minimize heat stress and prevent associated health risks.

Assessment in March 2026

WEATHER SYSTEMS THAT AFFECTED THE COUNTRY



NE NORTHEAST MONSOON (AMIHAN)
Cold and drier winds from the northeast bring rains over the eastern side of the country



LOCALIZED THUNDERSTORM
Warm isolated heavy and dense dark clouds with one or more sudden electric discharges manifested by lightning and thunder often accompanied by showers of rains.



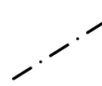
LOW PRESSURE AREA (LPA)
Areas of lowest pressure characterized by cloudiness and rainshowers; areas where a tropical cyclone can form



EASTERLIES
Warm winds blowing from the east may bring cloudiness over the eastern part of the country



RIDGE OF HIGH PRESSURE AREA (HPA)
An extension of a high pressure area characterized by a very light wind and clear skies



SHEAR LINE
Zone of converging winds associated with the extension of a frontal system that often brings thunderstorms and rainshowers

RAINFALL CONDITION

WAY BELOW NORMAL
Greater than 80% reduction from the normal*

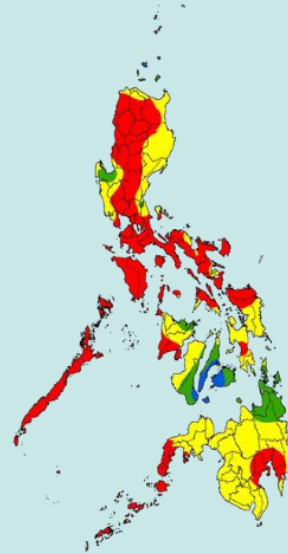
BELOW NORMAL
20%-60% reduction from the normal

ABOVE NORMAL
120% to 160% than normal

NEAR NORMAL
+20% or -20% from the normal

most parts of the country

Batanes, Camiguin, and most provinces in Central Visayas and CARAGA Region



TEMPERATURE

Generally, slightly cooler to cooler than average surface mean surface temperatures were observed in most parts of Luzon and Visayas. Furthermore, near to slightly warmer mean surface temperatures were observed over Mindanao. No extreme temperature records were surpassed in March 2026



Mountainous Luzon
7.5°C – 26.4°C



Metro Manila
17.1°C – 34.6°C



Mountainous Mindanao
14.4°C – 35.1°C



Lowlands Luzon
15.3°C – 37.2°C



Visayas
18.0°C – 35.0°C



Lowlands Mindanao
19.6°C – 35.4°C



MONTHLY CLIMATE ASSESSMENT AND OUTLOOK

(El Niño Watch)

Issued: 08 April 2026

Outlook in April 2026

EXPECTED WEATHER SYSTEMS



EASTERLIES

Warm winds blowing from the east may bring cloudiness over the eastern part of the country



RIDGE OF HIGH PRESSURE AREA (HPA)

An extension of a high pressure area characterized by a very light wind and clear skies



LOW PRESSURE AREA (LPA)

Areas of lowest pressure characterized by cloudiness and rainshowers; areas where a tropical cyclone can form



PASSAGE OF 0 OR 1 TROPICAL CYCLONE OR BAGYO

"Bagyo"; may refer to tropical depression, tropical storm, severe tropical storm, typhoon, or super typhoon.



LOCALIZED THUNDERSTORM

Warm isolated heavy and dense dark clouds with one or more sudden electric discharges manifested by lightning and thunder often accompanied by showers of rains.



INTERTROPICAL CONVERGENCE ZONE (ITCZ)

Series of low pressure areas brought about by converging Northeast (NE) and Southeast (SE) winds that cause thunderstorms and rainshowers



SHEAR LINE

Zone of converging winds associated with the extension of a frontal system that often brings thunderstorms and rainshowers

RAINFALL CONDITION



BELOW NORMAL
20%-60% reduction from the normal

most parts of Luzon, Panay Island, Western Visayas, Southern Leyte



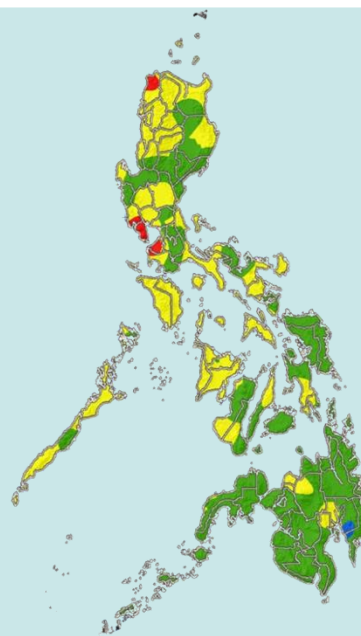
NEAR NORMAL
+20% or -20% from the normal

Luzon, the rest of Visayas, and most parts of Mindanao



WAY BELOW NORMAL
Greater than 60% reduction from the normal*

Bataan and Cavite



TEMPERATURE

Meanwhile, Near-normal to above-normal mean temperatures are expected across most parts of the country, with isolated areas likely to experience slightly cooler to cooler-than-average conditions in April.



Mountainous Luzon
12.9°C to 30.2°C



Metro Manila
20.8°C to 39.0°C



Mountainous Mindanao
14.6°C to 34.8°C



Lowlands Luzon
17.5°C to 40.5°C



Visayas
21.2°C to 37.2°C



Lowlands Mindanao
19.9°C to 38.2°C