



Issued: 16 May 2020

MONTHLY CLIMATE ASSESSMENT AND OUTLOOK

OVERVIEW

Warm El Niño Southern Oscillation (ENSO)-neutral condition persists across the tropical Pacific Ocean. Sea surface temperatures (SSTs) were slightly warmer than average reaching borderline El Niño levels; however, atmospheric conditions remain neutral. Majority of the climate models favor continuation of ENSO-neutral conditions until the third quarter (July – September) 2020.

Assessment in April 2020

WEATHER SYSTEMS THAT AFFECTED THE COUNTRY

L

LOW PRESSURE AREA (LPA)

Areas of lowest pressure characterized by cloudiness and rainshowers; areas where a tropical cyclone can form



LOCALIZED THUNDERSTORM

Isolated heavy and dense dark clouds with one or more sudden electric discharges manifested by lightning and thunder often accompanied by showers of rain.



EASTERLIES

Warm winds blowing from the east that may bring cloudiness over the eastern part of the country



INTERTROPICAL CONVERGENCE ZONE (ITCZ)

Series of low pressure areas brought about by converging northeast (NE) and southeast (SE) winds that cause thunderstorms and rainshowers



RIDGE OF HIGH PRESSURE AREA (HPA)

An extension of a high pressure area characterized by very light wind and clear skies

RAINFALL CONDITION



WAY BELOW NORMAL

Greater than 60% reduction from the normal*

Most parts of the country



BELOW NORMAL

20%-60% reduction from the normal



NEAR NORMAL

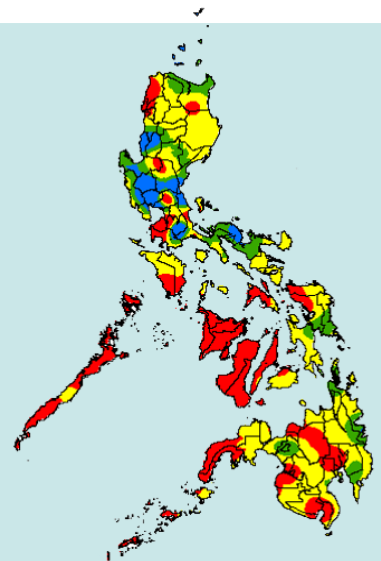
+20% or -20% from the normal

Batanes, Benguet, Ifugao, La Union, Pangasinan, Central Luzon, Laguna, Quezon, Camarines provinces, Lanao del Sur and Surigao



ABOVE NORMAL

120% greater than the normal



TEMPERATURE

Generally, near to above average surface air temperatures were experienced over most parts of the country.



Mountainous Luzon
14.2°C – 27.0°C



Metro Manila
22.6°C – 36.2°C



Mountainous Mindanao
17.2°C – 34.5°C



Lowlands Luzon
16.8°C – 39.0°C



Visayas
20.9°C – 37.0°C



Lowlands Mindanao
20.0°C – 38.4°C



MONTHLY CLIMATE ASSESSMENT AND OUTLOOK

Outlook in May 2020

EXPECTED WEATHER SYSTEMS

E EASTERLIES

Warm winds blowing from the east that may bring cloudiness over the eastern part of the country



LOCALIZED THUNDERSTORM

Isolated heavy and dense dark clouds with one or more sudden electric discharges manifested by lightning and thunder often accompanied by showers of rain.



1 or 2 TROPICAL CYCLONES

"Bagyo"; may refer to tropical depression, tropical storm, severe tropical storm, typhoon, or super typhoon.

((H RIDGE OF HIGH PRESSURE AREA (HPA)

An extension of a high pressure area characterized by very light wind and clear skies



LOW PRESSURE AREA (LPA)

Areas of lowest pressure characterized by cloudiness and rainshowers; areas where a tropical cyclone can form



SOUTHWEST MONSOON (HABAGAT)

Warm moist winds from the southwest causing rains over the western portion of the country from May to September

RAINFALL CONDITION



BELOW NORMAL

20%-60% reduction from the normal

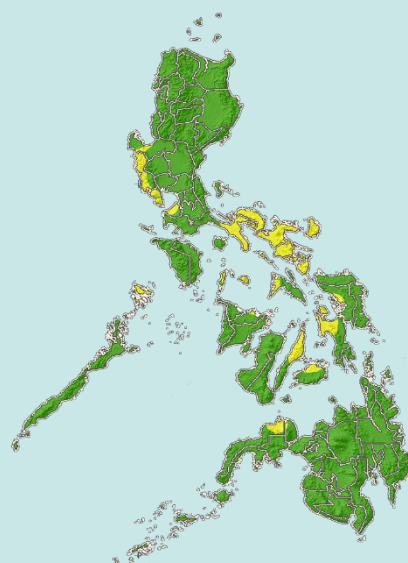
Bataan, Zambales, Cavite, Romblon, Bicol Region, Cebu, Biliran and Leyte



NEAR NORMAL

+20% or -20% from the normal

Most parts of the country



TEMPERATURE

Generally, near to above average temperatures are predicted in most parts of the country.



Mountainous Luzon
15.0 °C – 28.5 °C



Metro Manila
22.5 °C – 38.5 °C



Mountainous Mindanao
17.0 °C – 36.0 °C



Lowlands Luzon
19.0 °C – 42.0 °C



Visayas
20.0 °C – 38.0 °C



Lowlands Mindanao
19.0 °C – 39.0 °C