



PAYONG PAGASA

LA NIÑA ADVISORY NO. 6

Issued: 04 March 2021

OVERVIEW

La Niña continues to persist in the tropical Pacific, as reflected by below average (≤ -0.5 to -1.0°C) sea surface temperature anomalies (SSTAs). Majority of climate models suggest La Niña is likely to continue through Mar-April-May 2021 (~55% chance), with a rising probability of returning to ENSO-neutral during April-May-June 2021 (~60%).




La Niña increases the likelihood of having above normal rainfall conditions across most areas of the country. Adverse impacts such as flooding and landslides are still expected over vulnerable areas and sectors of the country.


Assessment in February 2021

WEATHER SYSTEMS THAT AFFECTED THE COUNTRY

L **LOW PRESSURE AREA (LPA)**
Areas of lowest pressure characterized by cloudiness and rainshowers; areas where a tropical cyclone can form

 **LOCALIZED THUNDERSTORM**
Isolated heavy and dense dark clouds with one or more sudden electric discharges manifested by lightning and thunder often accompanied by showers of rain.

E **EASTERLIES**
Warm winds blowing from the east that may bring cloudiness over the eastern part of the country

 **TAIL-END OF FRONTAL SYSTEM**
Extended zone of converging winds From east to northeast that often brings thunderstorms and rainshowers



INTERTROPICAL CONVERGENCE ZONE (ITCZ)

Series of low pressure areas brought about by converging northeast (NE) and southeast (SE) winds that cause thunderstorms and rainshowers

NE



NORTHEAST MONSOON (AMIHAN)

Cold winds from the northeast that bring rains over the eastern side of the country.



1 TROPICAL CYCLONE

STS "Auring" February 17-22

RAINFALL CONDITION



ABOVE NORMAL

120% greater than the normal

Most parts of the country



NEAR NORMAL

+20% or -20% from the normal

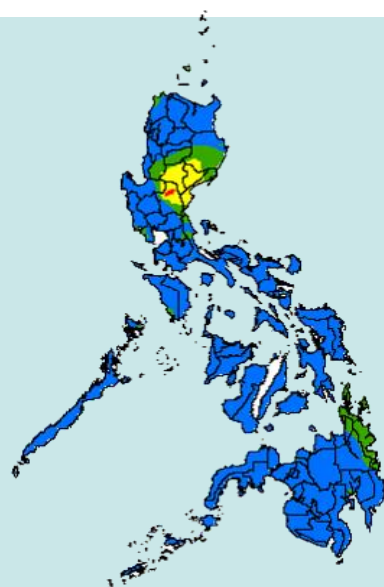
Benguet, Ifugao, Nueva Ecija, Dinagat, Surigao



BELOW NORMAL

20%-60% reduction from the normal

Nueva Viscaya, Quirino, Aurora



TEMPERATURE

Generally, slightly cooler to near average surface temperatures were observed in most parts of the country. Moreover, surges of cold temperatures became prevalent during the month due to enhanced NE monsoon.



Mountainous Luzon
13.9°C – 23.5°C



Metro Manila
23.0°C to 31.3°C



Mountainous Mindanao
17.2°C – 29.1°C



Lowlands Luzon
19.1°C – 33.1°C



Visayas
22.6°C – 31.5°C



Lowlands Mindanao
21.8°C – 33.1°C



PAYONG PAGASA

LA NIÑA ADVISORY NO. 6

Issued: 04 March 2021

Outlook in March 2021

EXPECTED WEATHER SYSTEMS



EASTERLIES

Warm winds blowing from the east that may bring cloudiness over the eastern part of the country



LOW PRESSURE AREA (LPA)

Areas of lowest pressure characterized by cloudiness and rainshowers; areas where a tropical cyclone can form

NE



NORTHEAST MONSOON (AMIHAN)

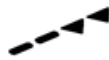
Cold winds from the northeast that bring rains over the eastern side of the country.



LOCALIZED THUNDERSTORM

Isolated heavy and dense dark clouds with one or more sudden electric discharges manifested by lightning and thunder often accompanied by showers of rain.

TAIL-END OF FRONTAL SYSTEM



Extended zone of converging winds
From east to northeast that often brings thunderstorms and rainshowers



RIDGE OF HIGH PRESSURE AREA (HPA)

An extension of a high pressure area characterized by very light wind and clear skies



0 or 1 TROPICAL CYCLONES

"Bagyo"; may refer to tropical depression, tropical storm, severe tropical storm, typhoon, or super typhoon.



INTERTROPICAL CONVERGENCE ZONE (ITCZ)

Series of low pressure areas brought about by converging northeast (NE) and southeast (SE) winds that cause thunderstorms and rainshowers

RAINFALL CONDITION



ABOVE NORMAL

120% greater than the normal

Most parts of the country



BELOW NORMAL

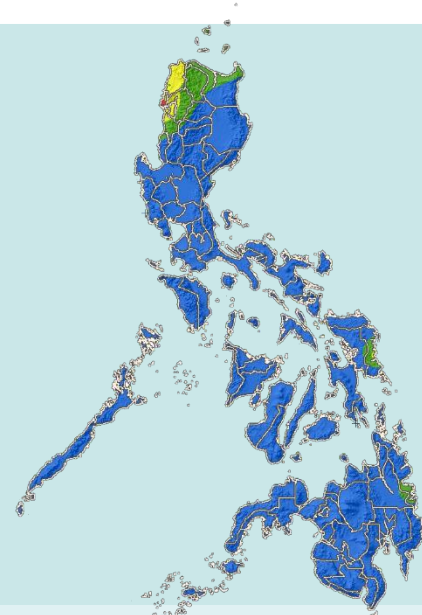
20%-60% reduction from the normal

Ilocos Norte, Ilocos Sur,
Abra, Apayao, Batanes



NEAR NORMAL

+20% or -20% from the normal



TEMPERATURE

Generally, slightly cooler to near average air temperatures can be expected in most parts of the country. Occasional surges of cold temperatures will still be prevalent over the northern portions of Luzon.



Mountainous Luzon
11.3°C – 28.8°C



Metro Manila
21.0°C to 36.6°C



Mountainous Mindanao
14.1°C – 34.4°C



Lowlands Luzon
18.5°C – 37.9°C



Visayas
19.5°C – 36.2°C



Lowlands Mindanao
17.5°C – 38.7°C