



MONTHLY CLIMATE ASSESSMENT AND OUTLOOK

OVERVIEW

During the past two months, sea surface temperatures (SSTs) across the central and eastern equatorial Pacific had become cooler than average, however, slightly warmer SSTs were still observed in the western Pacific. The atmospheric indicator was also slightly negative. Most international climate models show that ENSO-neutral conditions will likely continue until the July to September 2020 season and ~50% probability for La Niña to develop before the end of the year.

Assessment in June 2020

WEATHER SYSTEMS THAT AFFECTED THE COUNTRY

L

LOW PRESSURE AREA (LPA)

Areas of lowest pressure characterized by cloudiness and rainshowers; areas where a tropical cyclone can form



EASTERLIES

Warm winds blowing from the east that may bring cloudiness over the eastern part of the country



INTERTROPICAL CONVERGENCE ZONE (ITCZ)

Series of low pressure areas brought about by converging northeast (NE) and southeast (SE) winds that cause thunderstorms and rainshowers



LOCALIZED THUNDERSTORM

Isolated heavy and dense dark clouds with one or more sudden electric discharges manifested by lightning and thunder often accompanied by showers of rain.



RIDGE OF HIGH PRESSURE AREA (HPA)

An extension of a high pressure area characterized by very light wind and clear skies

SW



SOUTHWEST MONSOON (HABAGAT)

Warm moist winds from the southwest causing rains over the western portion of the country from May to September



1 TROPICAL CYCLONES

Tropical Storm "Buchoy" (Jun 11-12)

RAINFALL CONDITION

The onset of the rainy season associated with the SW monsoon season was declared on June 12.



WAY BELOW NORMAL

Greater than 60% reduction from the normal*



BELOW NORMAL

20%-60% reduction from the normal

northern and central parts of Luzon



NEAR NORMAL

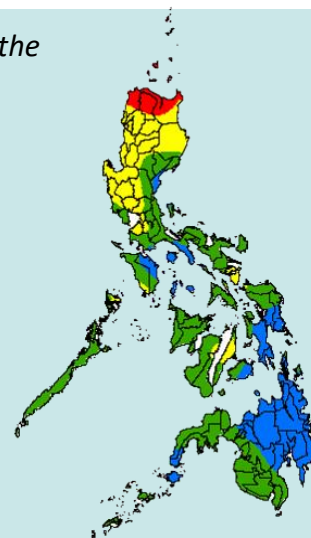
+20% or -20% from the normal



ABOVE NORMAL

120% greater than the normal

Most parts of the country



TEMPERATURE

Generally, near to above average surface air temperatures were experienced over most parts of the country.



Mountainous Luzon
15.4°C – 27.8°C



Metro Manila
24.5°C to 36.7°C



Mountainous Mindanao
17.5°C – 33.0°C



Lowlands Luzon
20.0°C – 38.0°C



Visayas
22.0°C – 36.8°C



Lowlands Mindanao
21.4°C – 36.2°C



MONTHLY CLIMATE ASSESSMENT AND OUTLOOK

Outlook in July 2020

EXPECTED WEATHER SYSTEMS

E EASTERLIES

Warm winds blowing from the east that may bring cloudiness over the eastern part of the country



LOCALIZED THUNDERSTORM

Isolated heavy and dense dark clouds with one or more sudden electric discharges manifested by lightning and thunder often accompanied by showers of rain.



2 or 4 TROPICAL CYCLONES

"Bagyo"; may refer to tropical depression, tropical storm, severe tropical storm, typhoon, or super typhoon.

((H RIDGE OF HIGH PRESSURE AREA (HPA)

An extension of a high pressure area characterized by very light wind and clear skies



LOW PRESSURE AREA (LPA)

Areas of lowest pressure characterized by cloudiness and rainshowers; areas where a tropical cyclone can form



INTERTROPICAL CONVERGENCE ZONE (ITCZ)

Series of low pressure areas brought about by converging northeast (NE) and southeast (SE) winds that cause thunderstorms and rainshowers

SW

SOUTHWEST MONSOON (HABAGAT)

Warm moist winds from the southwest causing rains over the western portion of the country from May to September



RAINFALL CONDITION



BELOW NORMAL

20%-60% reduction from the normal

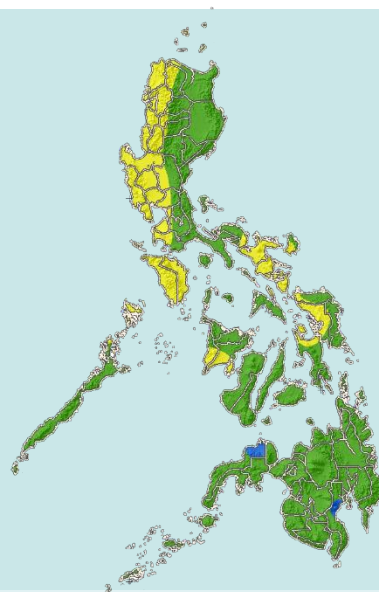
in most areas of western Luzon, parts of Bicol region, Mindoro provinces and some parts of the Visayas



NEAR NORMAL

+20% or -20% from the normal

Most parts of the country



TEMPERATURE

Near to above average temperatures are predicted in most parts of the country.



Mountainous Luzon
14.8°C – 27.4°C



Metro Manila
19.5°C to 36.3°C



Mountainous Mindanao
16.0°C – 32.8°C



Lowlands Luzon
18.7°C – 40.2°C



Visayas
20.0°C – 36.9°C



Lowlands Mindanao
18.4°C – 36.2°C