



PAYONG PAGASA

MONTHLY CLIMATE ASSESSMENT AND OUTLOOK

Issued: 07 July 2021

OVERVIEW

El Niño Southern Oscillation (ENSO) - neutral condition is present across the tropical Pacific Ocean, as both the oceanic and atmospheric indicators are within neutral levels. Majority of the climate models suggest ENSO-neutral conditions are likely to persist during the June-July-August 2021 season, with 50% chance to continue until September-October-November 2021 season.

Assessment in Jun 2021

WEATHER SYSTEMS THAT AFFECTED THE COUNTRY

L

LOW PRESSURE AREA (LPA)

Areas of lowest pressure characterized by cloudiness and rainshowers; areas where a tropical cyclone can form

(((

RIDGE OF HIGH PRESSURE AREA (HPA)

An extension of a high pressure area characterized by very light wind and clear skies



LOCALIZED THUNDERSTORM

Isolated heavy and dense dark clouds with one or more sudden electric discharges manifested by lightning and thunder often accompanied by showers of rain.

SW

SOUTHWEST MONSOON (HABAGAT)

Warm moist winds from the southwest causing rains over the western portion of the country from May to September

≈

INTERTROPICAL CONVERGENCE ZONE (ITCZ)

Series of low pressure areas brought about by converging northeast (NE) and southeast (SE) winds that cause thunderstorms and rainshowers

6

1 TROPICAL CYCLONES

TS 'Dante' (May 30- June 5)

RAINFALL CONDITION



BELOW NORMAL

20%-60% reduction from the normal



NEAR NORMAL

+20% or -20% from the normal

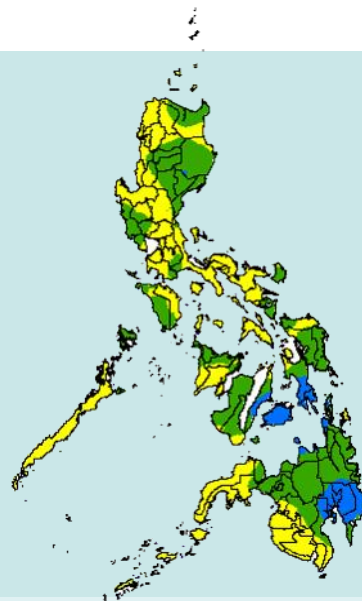


ABOVE NORMAL

120% greater than the normal

Most regions of the country

Bohol, Leyte, and Southern Leyte, Camiguin, Dinagat Islands and Davao Region



TEMPERATURE



Mountainous Luzon
16.4°C – 24.3°C



Metro Manila
25.6°C to 33.2°C



Mountainous Mindanao
19.0°C – 30.9°C



Lowlands Luzon
20.8°C – 37.1°C



Visayas
24.2°C – 33.3°C



Lowlands Mindanao
22.3°C – 34.1°C

Surface temperatures were near to slightly warmer than usual, except for western parts of the Visayas, where temperatures were slightly cooler than average.



PAYONG PAGASA

MONTHLY CLIMATE ASSESSMENT AND OUTLOOK

Issued: 07 July 2021

Outlook in July 2021

EXPECTED WEATHER SYSTEMS



EASTERLIES

Warm winds blowing from the east that may bring cloudiness over the eastern part of the country



LOCALIZED THUNDERSTORM

Isolated heavy and dense dark clouds with one or more sudden electric discharges manifested by lightning and thunder often accompanied by showers of rain.



1 to 3 TROPICAL CYCLONES

"Bagyo"; may refer to tropical depression, tropical storm, severe tropical storm, typhoon, or super typhoon.



LOW PRESSURE AREA (LPA)

Areas of lowest pressure characterized by cloudiness and rainshowers; areas where a tropical cyclone can form



((H RIDGE OF HIGH PRESSURE AREA (HPA)

An extension of a high pressure area characterized by very light wind and clear skies



INTERTROPICAL CONVERGENCE ZONE (ITCZ)

Series of low pressure areas brought about by converging northeast (NE) and southeast (SE) winds that cause thunderstorms and rainshowers



SOUTHWEST MONSOON (HABAGAT)

Warm moist winds from the southwest causing rains over the western portion of the country from May to September

RAINFALL CONDITION



NEAR NORMAL

+20% or -20% from the normal

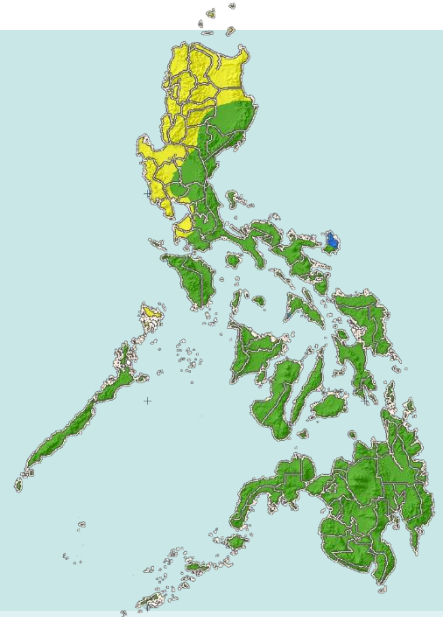
Most parts of the country



BELOW NORMAL

20%-60% reduction from the normal

Region I, CAR, Metro Manila Batanes, Cagayan, Bataan, Tarlac, Zambales and Cavite



TEMPERATURE

Generally, slightly below average to above average air temperatures are predicted in most parts of the country.



Mountainous Luzon
15.0°C – 27.5°C



Metro Manila
21.5°C - 36.5°C



Mountainous Mindanao
16.5°C – 34.5°C



Lowlands Luzon
17.0°C – 40.0°C



Visayas
20.0°C – 36.5°C



Lowlands Mindanao
18.5°C – 36.0°C