



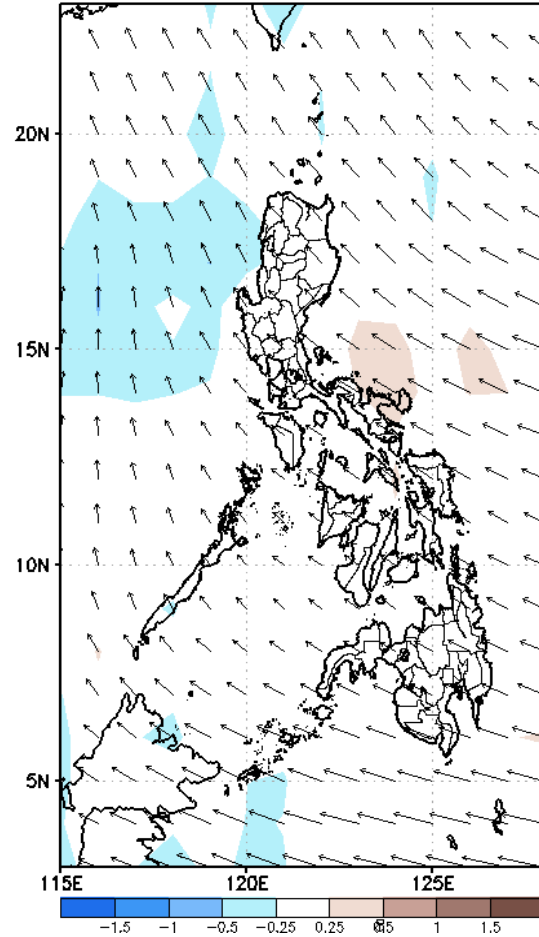
# Week 1 & Week 2 Forecast for the Philippines using GEFS Model



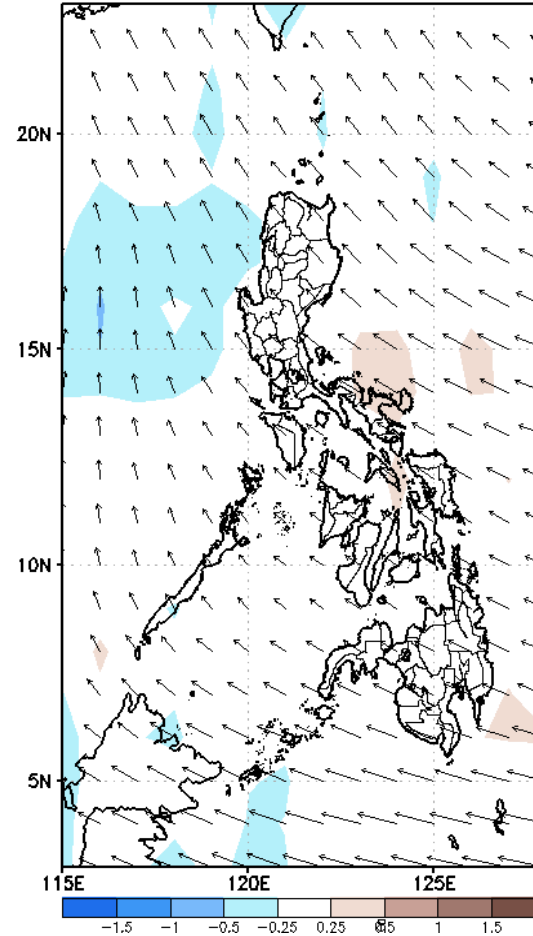
# GEFS Week-1 Forecasts: Wind Anomaly Forecast

Week 1: Aug 01-07, 2022

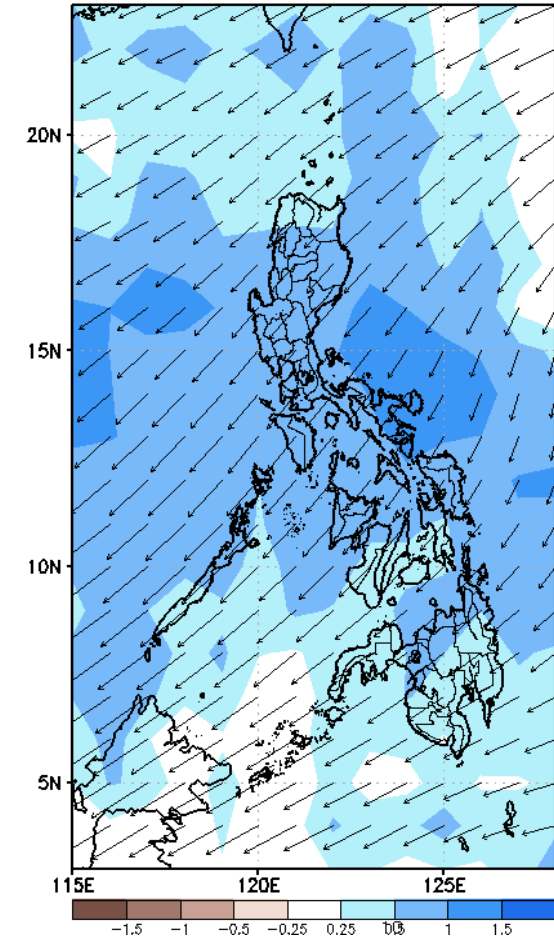
GEFS Week-1 850-hPa Divergence and Wind Anomaly  
Valid: 20220801 - 20220807



GEFS Week-1 700-hPa Divergence and Wind Anomaly  
Valid: 20220801 - 20220807



GEFS Week-1 200-hPa Divergence and Wind Anomaly  
Valid: 20220801 - 20220807

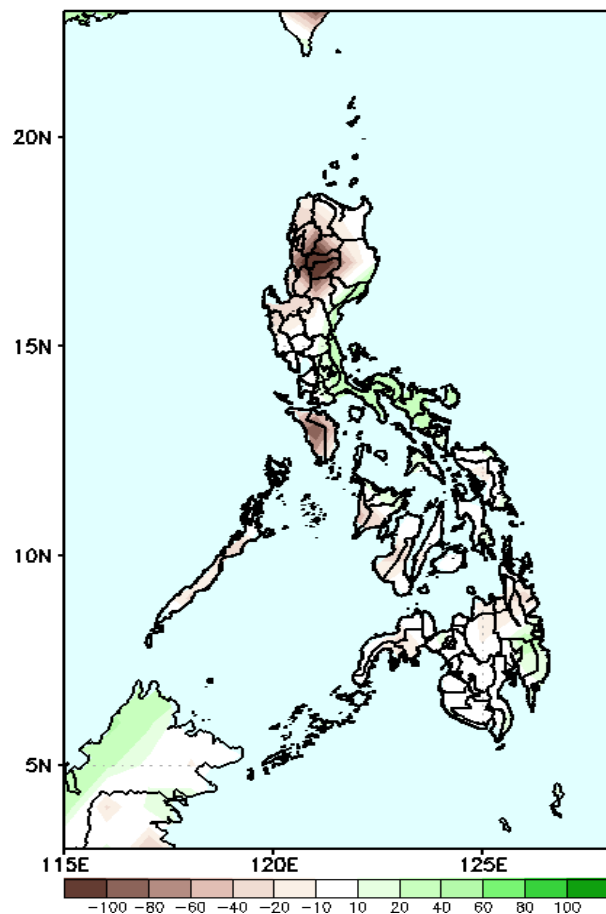


Easterlies affecting most parts of the country during the forecast period.

# Precipitation Anomaly and Exceedance Probability > 25/50 mm

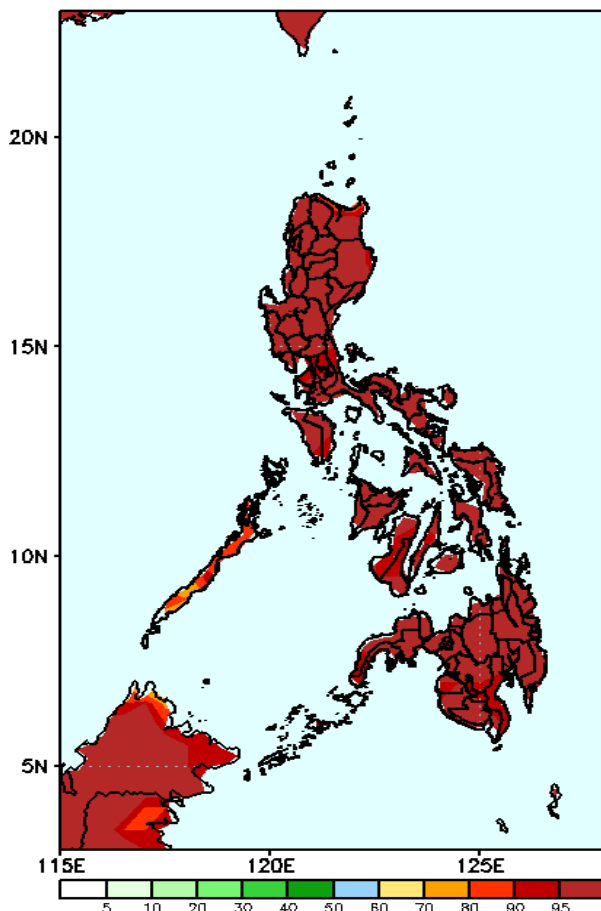
Week 1: Aug 01-07, 2022

GEFS Week-1 Precip Anomaly  
Valid: 20220801 - 20220807



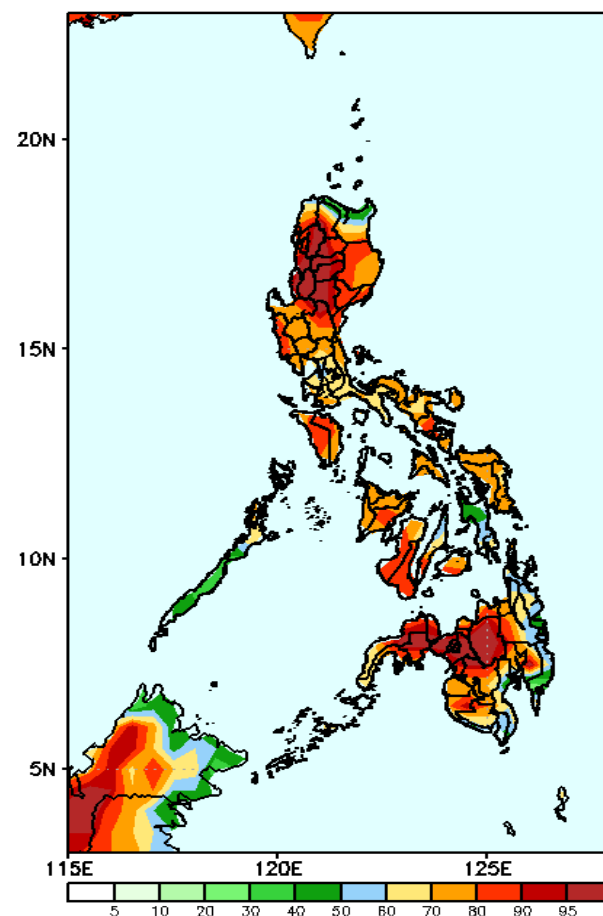
Rainfall deficit of 40-100mm is expected in Ilocos & Cordillera Region and Mindoro while 40-70mm increase in Aurora, Southern Luzon, Bicol Region and Compostela Valley during the forecast period .

GEFS Week-1 Exceedance Prob. > 25mm  
Valid: 20220801 - 20220807



High probability of rainfall to exceed 25mm in most parts of the country during the forecast period.

GEFS Week-1 Exceedance Prob. > 50mm  
Valid: 20220801 - 20220807



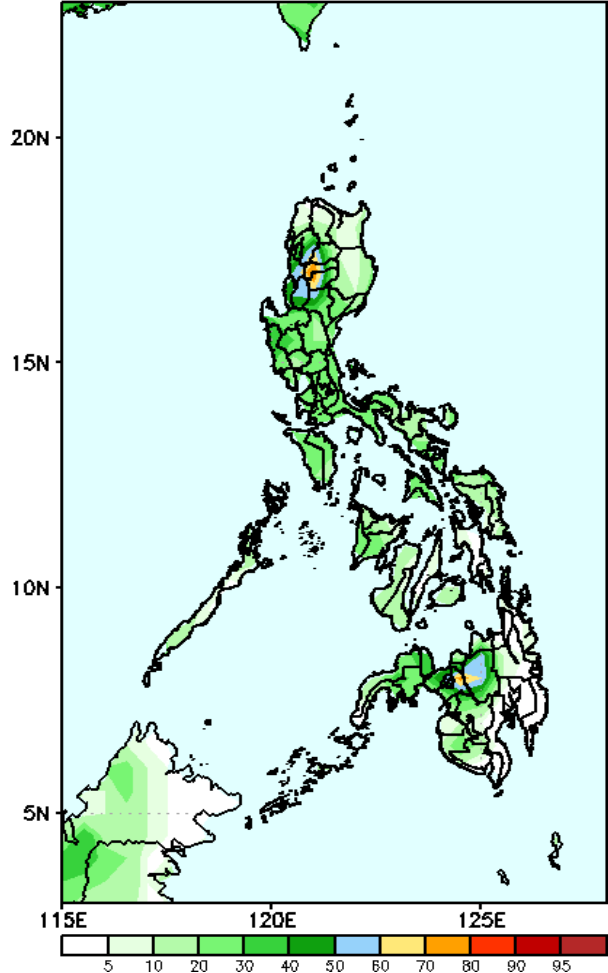
High probability of rainfall to exceed 50mm in most parts of the country during the forecast period.



# Exceedance Probability > 100/150/200 mm

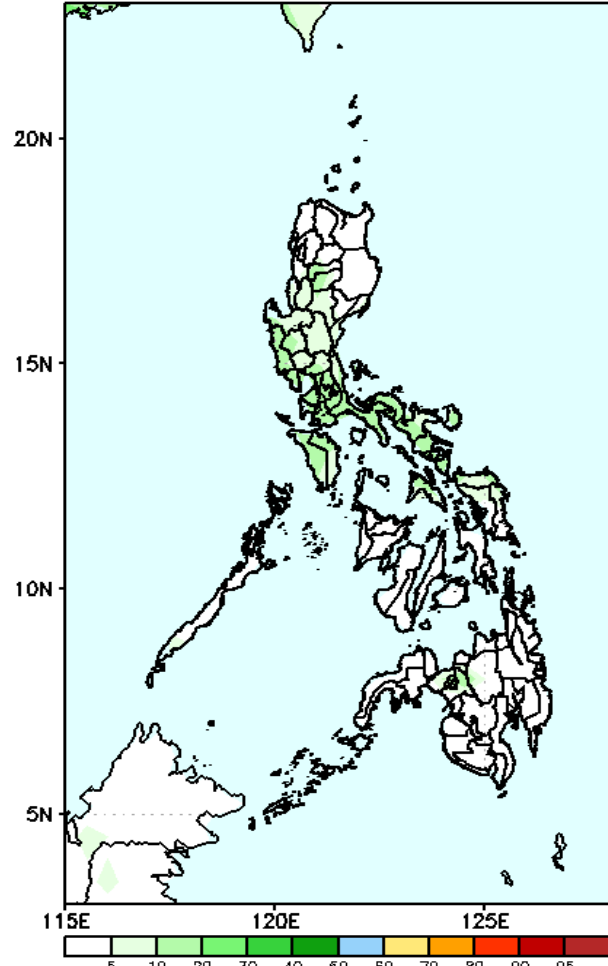
## Week 1: Aug 01-07, 2022

GEFS Week-1 Exceedance Prob. > 100mm  
Valid: 20220801 – 20220807



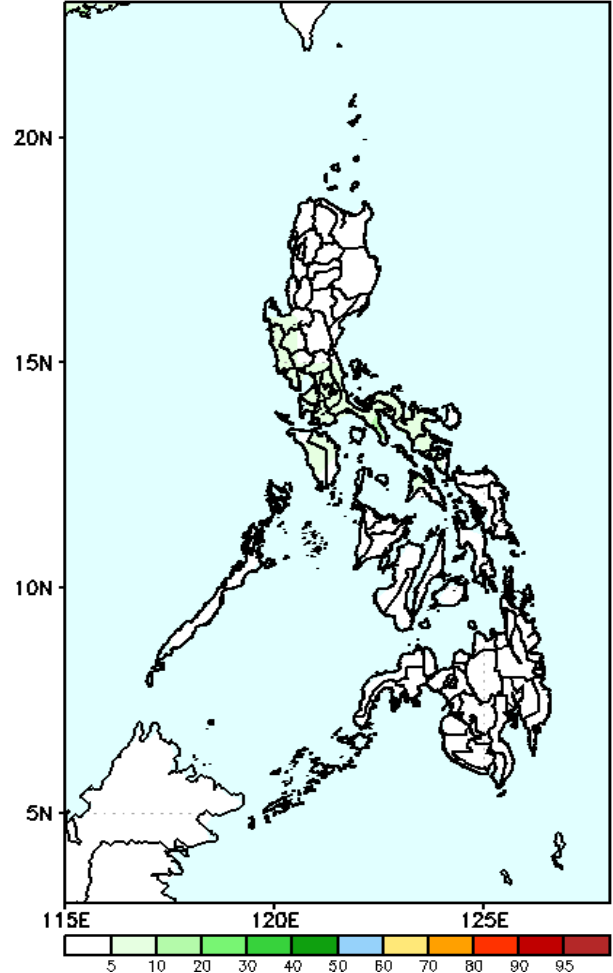
Low probability of rainfall to exceed 100mm in most parts of the country during the forecast period.

GEFS Week-1 Exceedance Prob. > 150mm  
Valid: 20220801 – 20220807



Low probability of rainfall to exceed 150mm in most parts of the country during the forecast period.

GEFS Week-1 Exceedance Prob. > 200mm  
Valid: 20220801 – 20220807

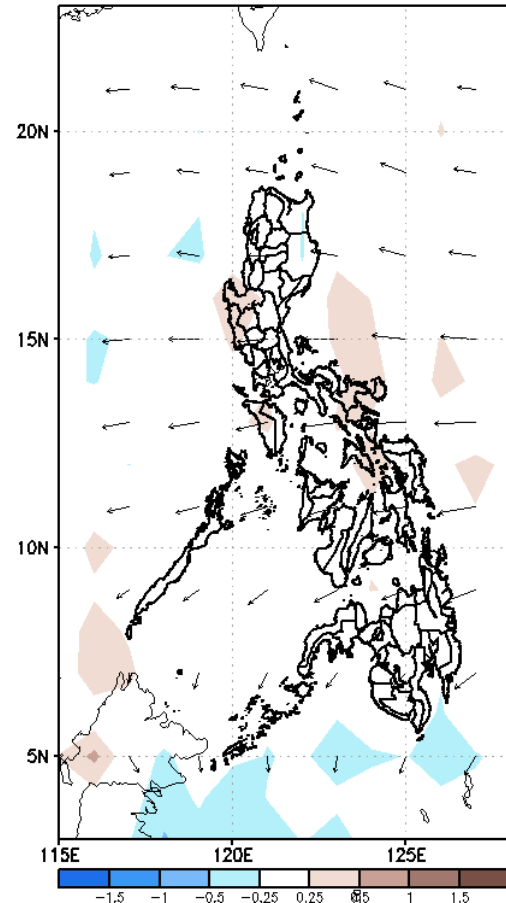


Low probability of rainfall to exceed 200mm in most parts of the country during the forecast period.

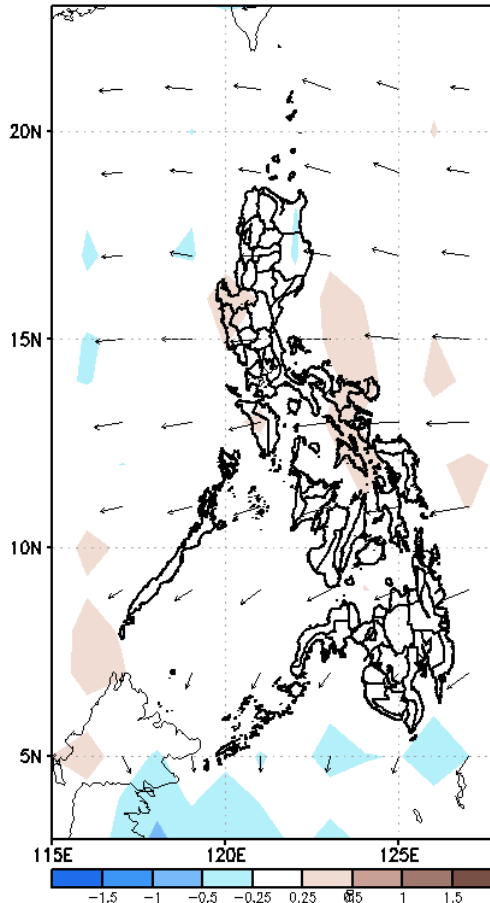
# GEFS Week-2 Forecasts: Wind Anomaly Forecast

Week 2: Aug 08-14, 2022

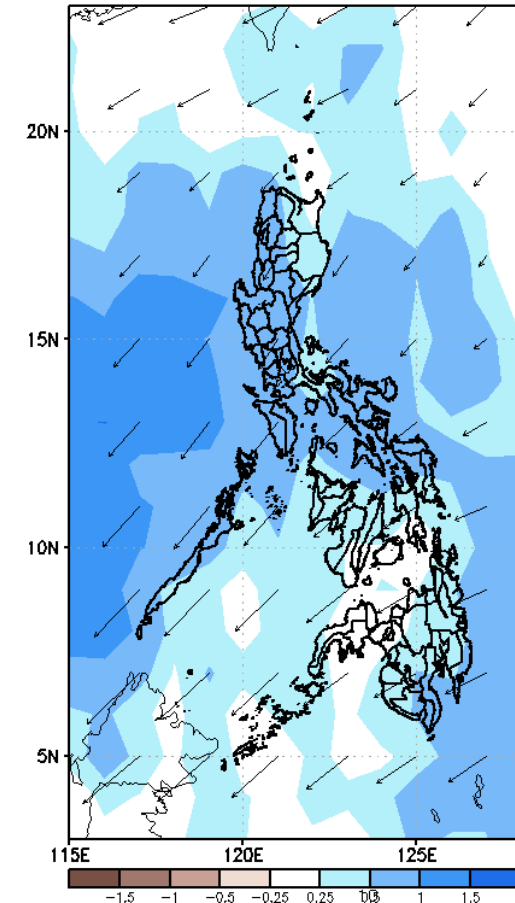
GEFS Week-2 850-hPa Divergence and Wind Anomaly  
Valid: 20220808 - 20220814



GEFS Week-2 700-hPa Divergence and Wind Anomaly  
Valid: 20220808 - 20220814



GEFS week-2 200-hPa Divergence and Wind Anomaly  
Valid: 20220808 - 20220814

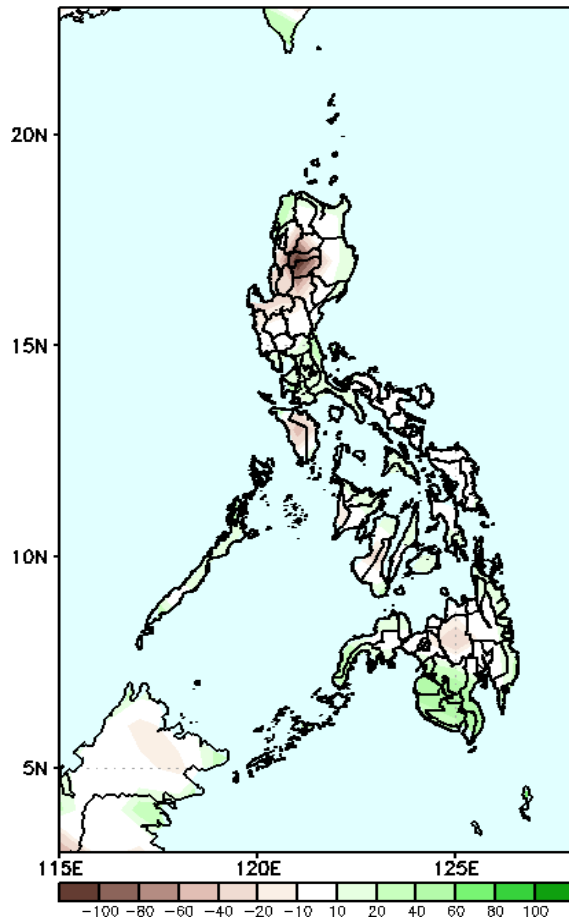


Easterlies affecting most parts of the country during the forecast period.

# Precipitation Anomaly and Exceedance Probability > 25/50 mm

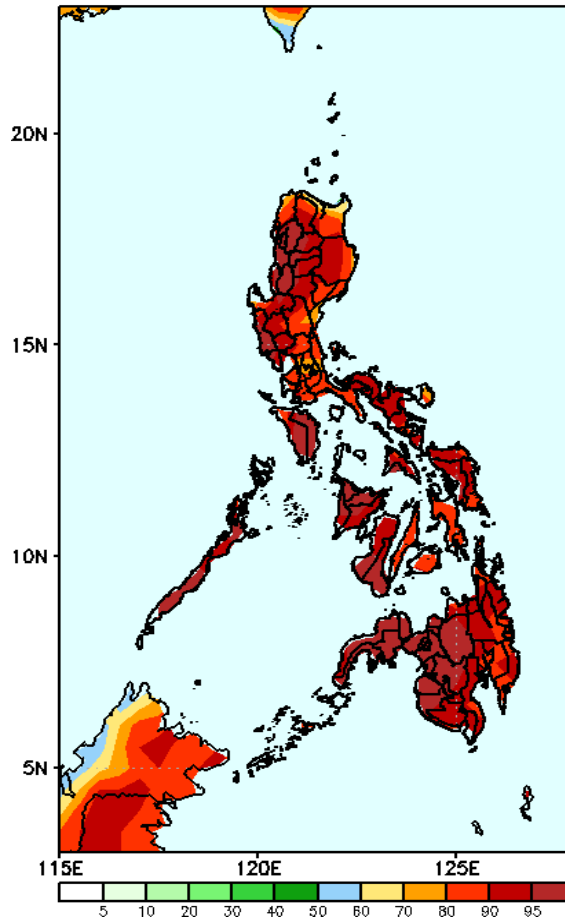
Week 2: Aug 08-14, 2022

GEFS Week-2 Precip Anomaly  
Valid: 20220808 - 20220814



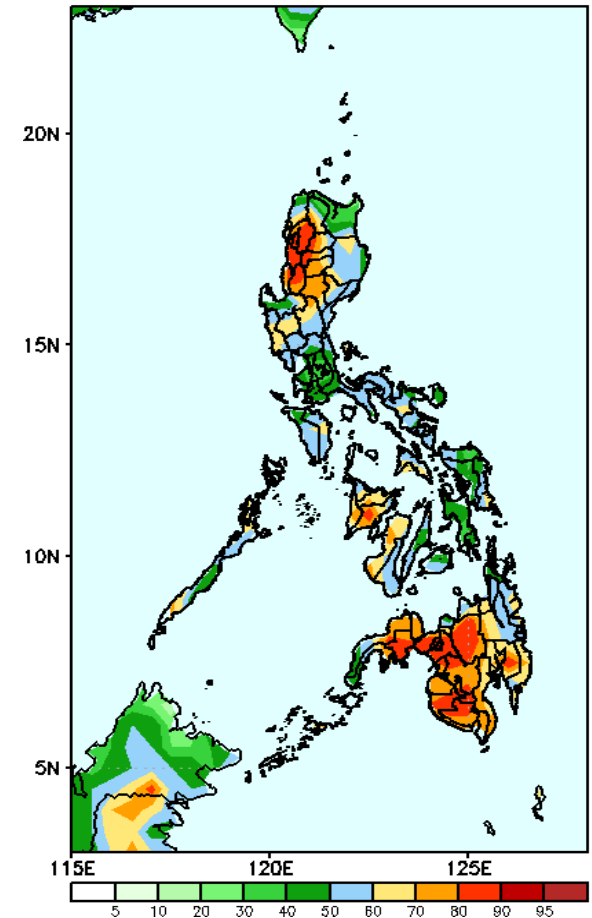
Rainfall deficit of 40-80mm is expected in Kalinga, Mt. Province, Ifugao, Mindoro and Bukidnon while 50-80mm increase in SOCCSKARGEN during the forecast period.

GEFS Week-2 Exceedance Prob. > 25mm  
Valid: 20220808 - 20220814



High probability of rainfall to exceed 25mm in most parts of the country during the forecast period.

GEFS Week-2 Exceedance Prob. > 50mm  
Valid: 20220808 - 20220814



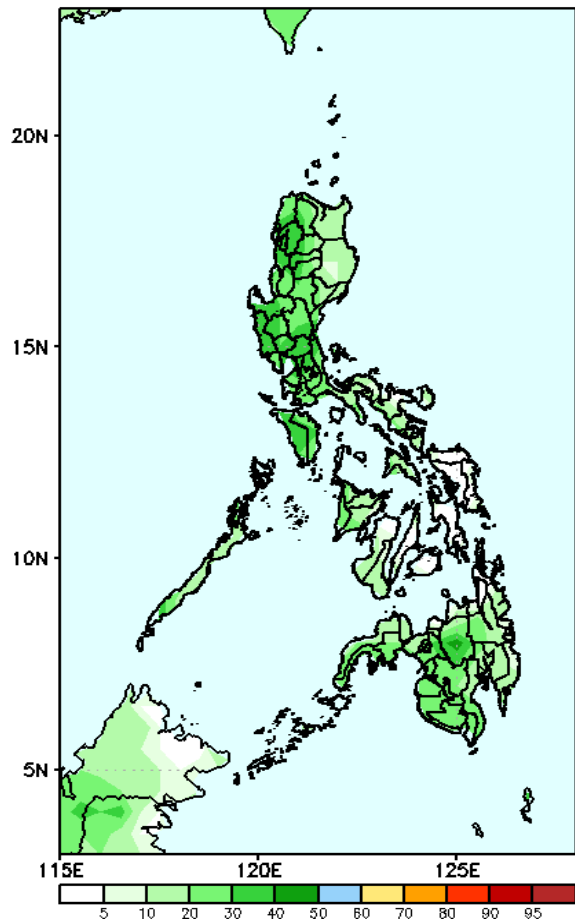
High probability of rainfall to exceed 50mm in most parts Northern and Central Luzon, Western Visayas and most parts of Mindanao while less likely for the rest of the country during the forecast period.



# Exceedance Probability > 100/150/200 mm

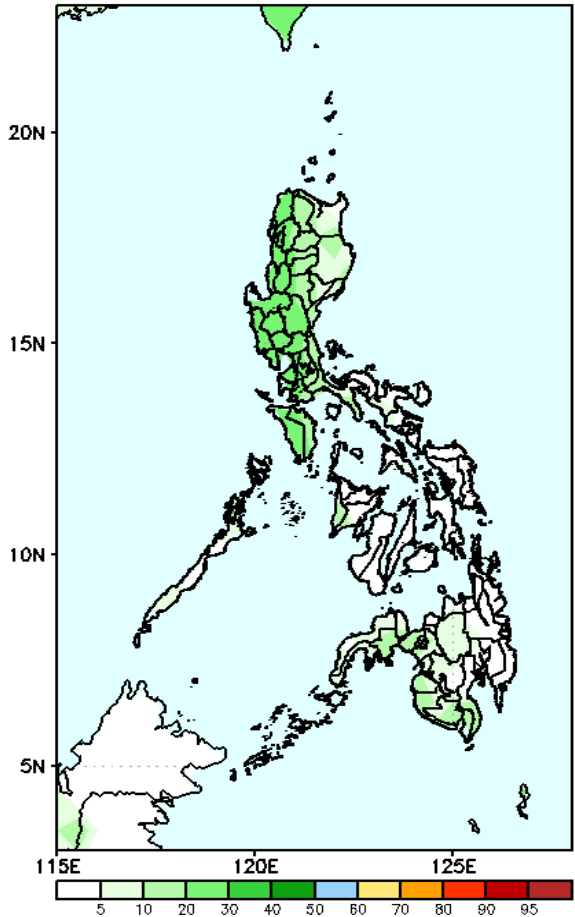
Week 2: Aug 08-14, 2022

GEFS Week-2 Exceedance Prob. > 100mm  
Valid: 20220808 – 20220814



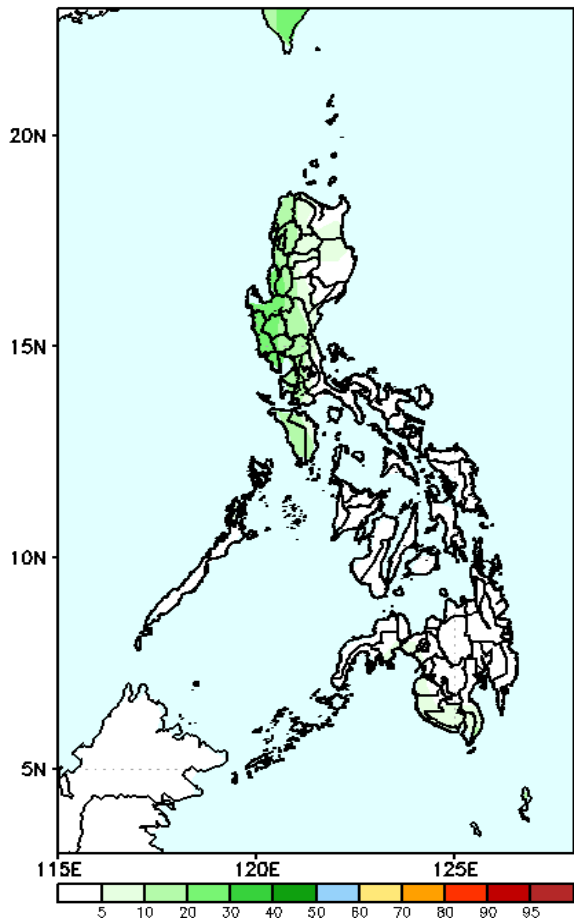
Low probability of rainfall to exceed 100mm in most parts of the country during the forecast period.

GEFS Week-2 Exceedance Prob. > 150mm  
Valid: 20220808 – 20220814



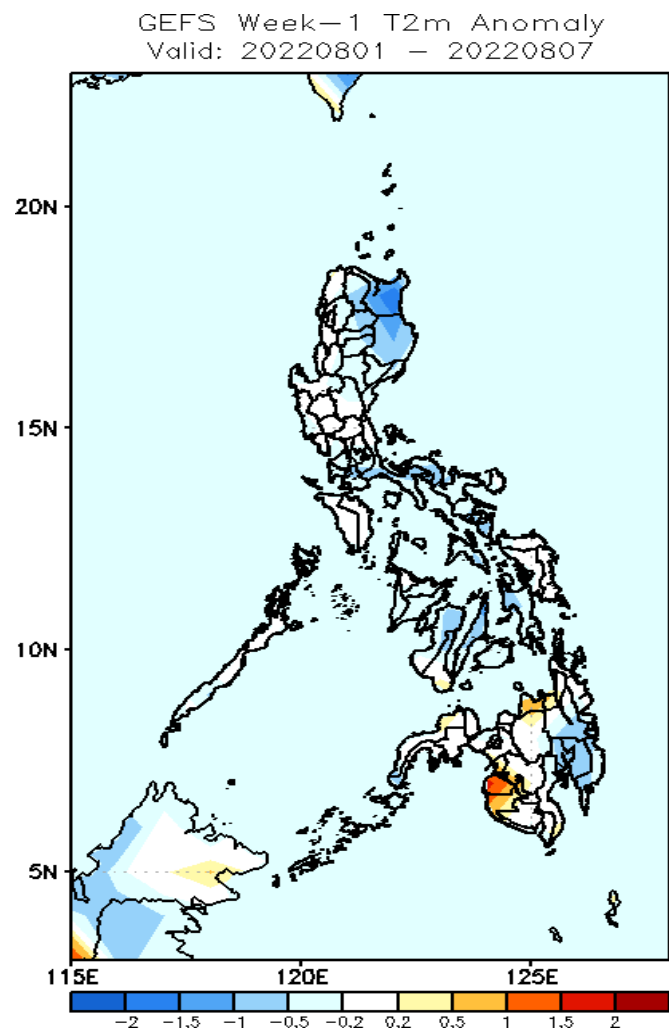
Low probability of rainfall to exceed 150mm in most parts of the country during the forecast period.

GEFS Week-2 Exceedance Prob. > 200mm  
Valid: 20220808 – 20220814



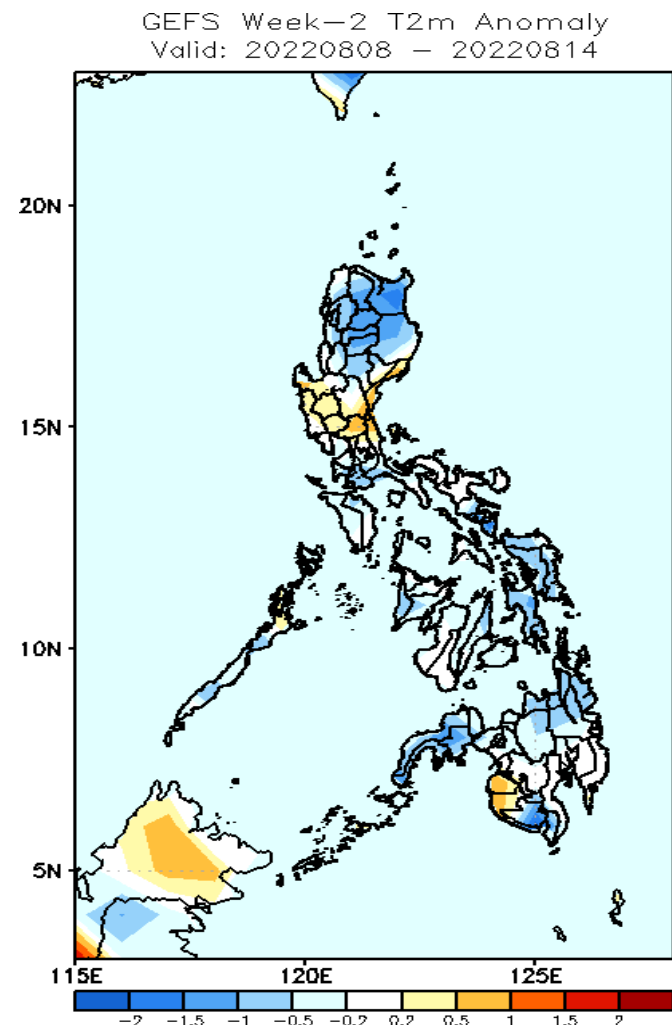
Low probability of rainfall to exceed 200mm in most parts of the country during the forecast period.

# GEFS Week-1 & 2 Forecasts: T2m Anomaly



## 2m Temperature Week 1: Aug 01-07, 2022

Near to cooler than average surface air temperature will likely experience in most parts of the country except in Misamis Oriental, Maguindanao and Sultan Kudarat where warmer than average surface air temperature will likely during the forecast period.



## 2m Temperature Week 2: Aug 08-14, 2022

Slightly cooler to cooler than average surface air temperature will likely experience in most parts of the country except most parts of Central Luzon, Pangasinan, Maguindanao and Sultan Kudarat where slightly warmer than average surface air temperature will likely during the forecast period.