



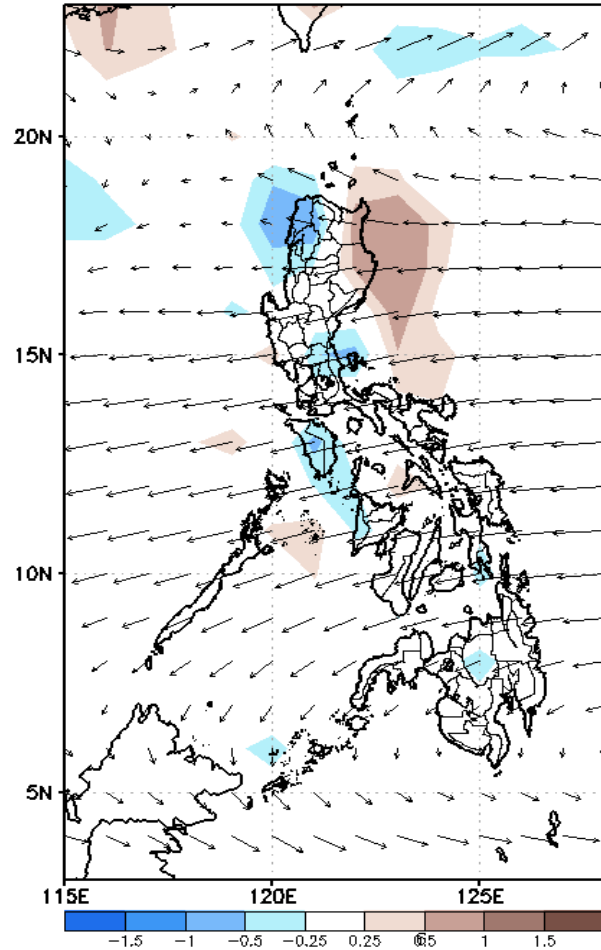
Week 1 & Week 2 Forecast for the Philippines using GEFS Model



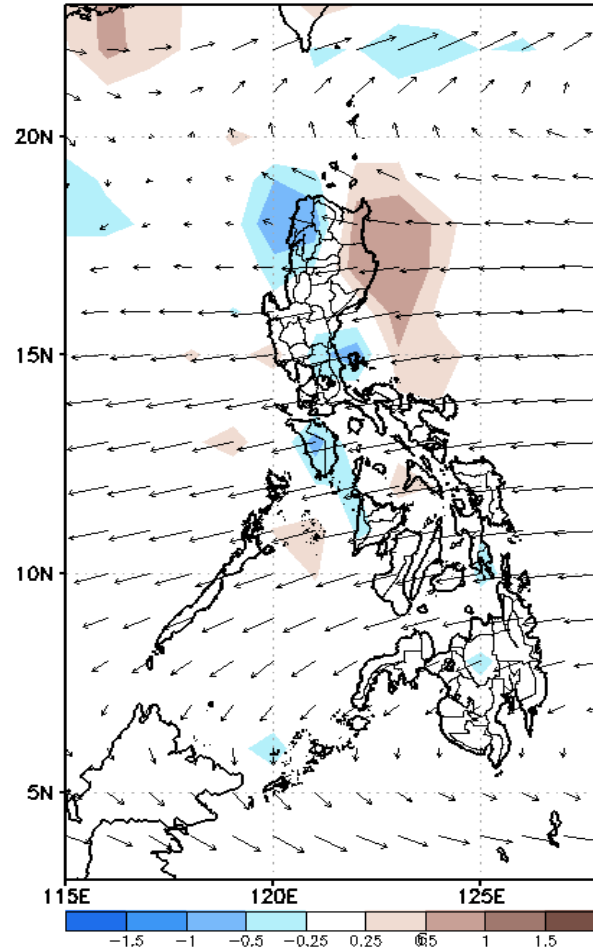
GEFS Week-1 Forecasts: Divergence & Wind Anomaly

Week 1: Apr 01-07, 2022

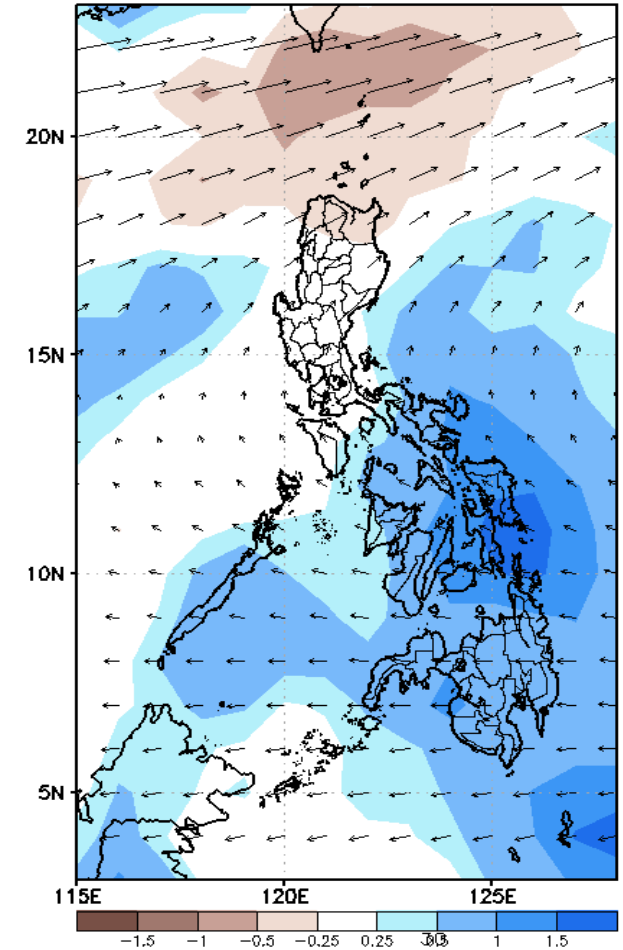
GEFS Week-1 850-hPa Divergence and Wind Anom
Valid: 20220401 - 20220407



GEFS Week-1 700-hPa Divergence and Wind Anom
Valid: 20220401 - 20220407



GEFS Week-1 200-hPa Divergence and Wind Anom
Valid: 20220401 - 20220407

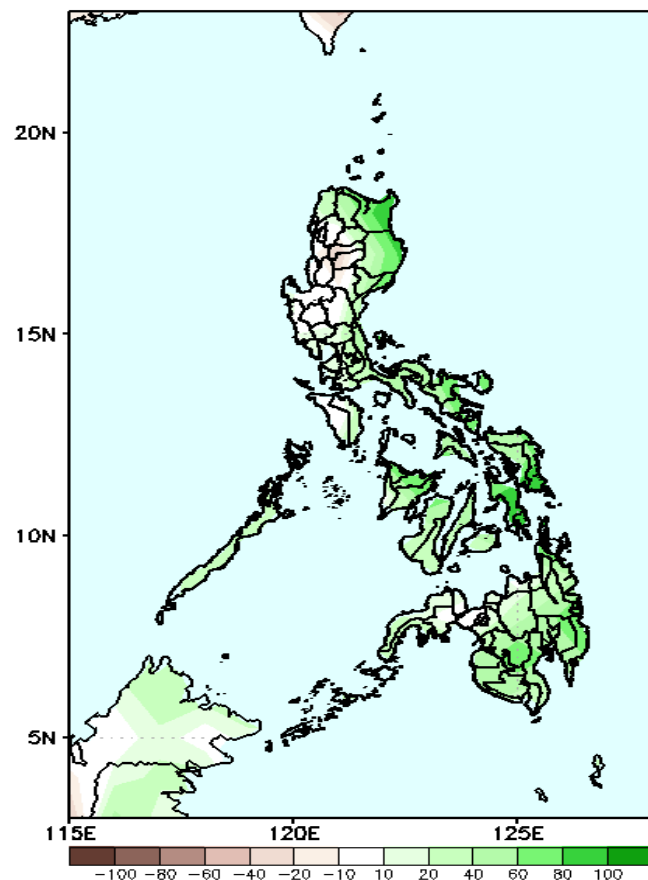


Upper and low level Divergence suggest a likelihood of light to moderate precipitation in Palawan, Bicol region and most parts of Visayas and Mindanao due to localize thunderstorm. Easterlies affecting most parts of the country attributing to warmer temperatures during the forecast period.

Precipitation Anomaly and Exceedance Probability > 25/50 mm

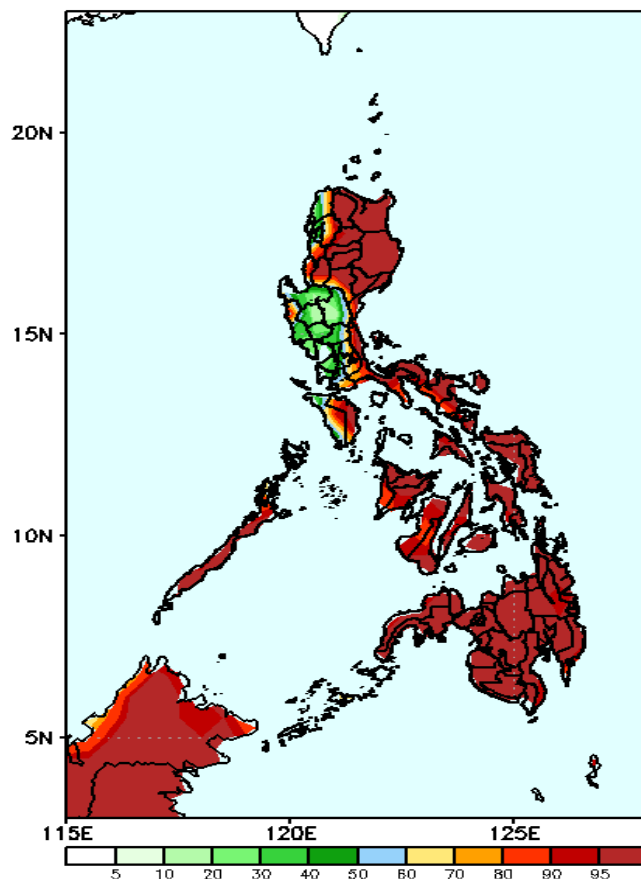
Week 1: Apr 01-07, 2022

GEFS Week-1 Precip. Anomaly
Valid: 20220401 - 20220407



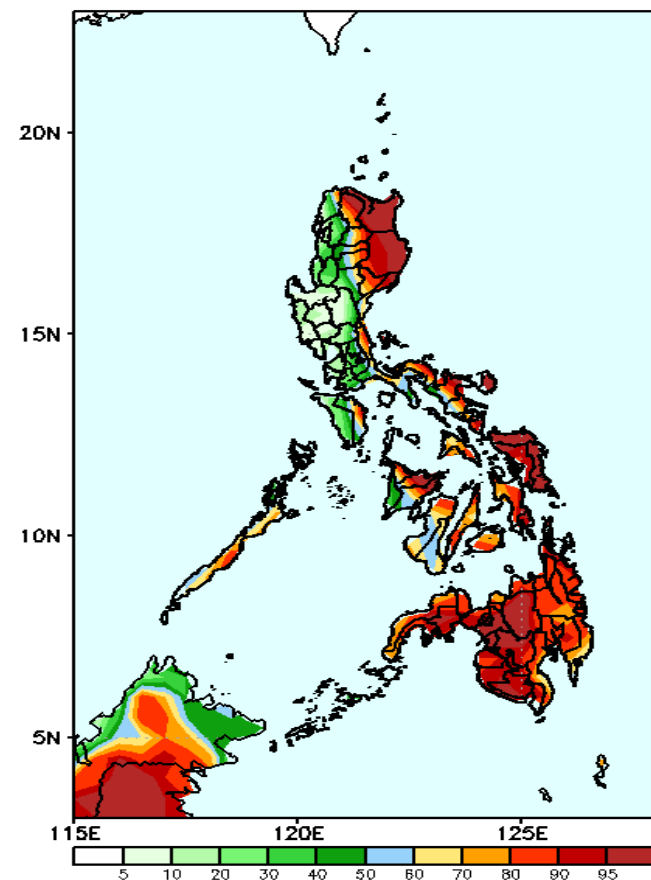
Increase of rainfall of 50-100mm in most parts of the country except in some areas in Cordillera Region and Central Luzon during the forecast period.

GEFS Week-1 Exceedance Prob. > 25mm
Valid: 20220401 - 20220407



High probability of rainfall to exceed 25mm in most parts of the country except in Pangasinan and Central Luzon during the forecast period.

GEFS Week-1 Exceedance Prob. > 50mm
Valid: 20220401 - 20220407



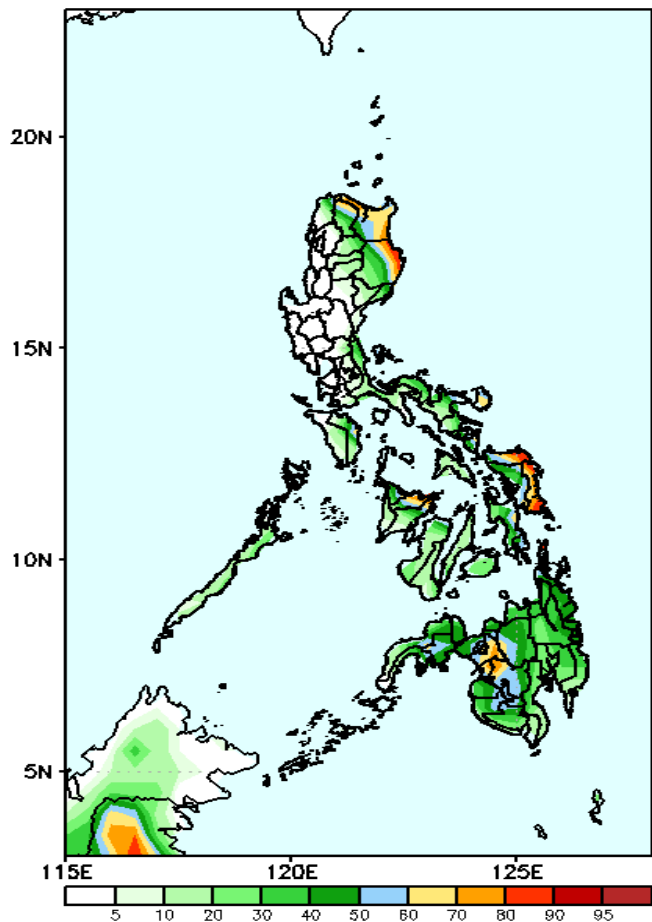
High probability of rainfall to exceed 50mm in Apayao, Or. Mindoro, Palawan, most parts of Eastern Luzon, Visayas and Mindanao while less likely for the rest of Luzon during the forecast period.



Exceedance Probability > 100/150/200 mm

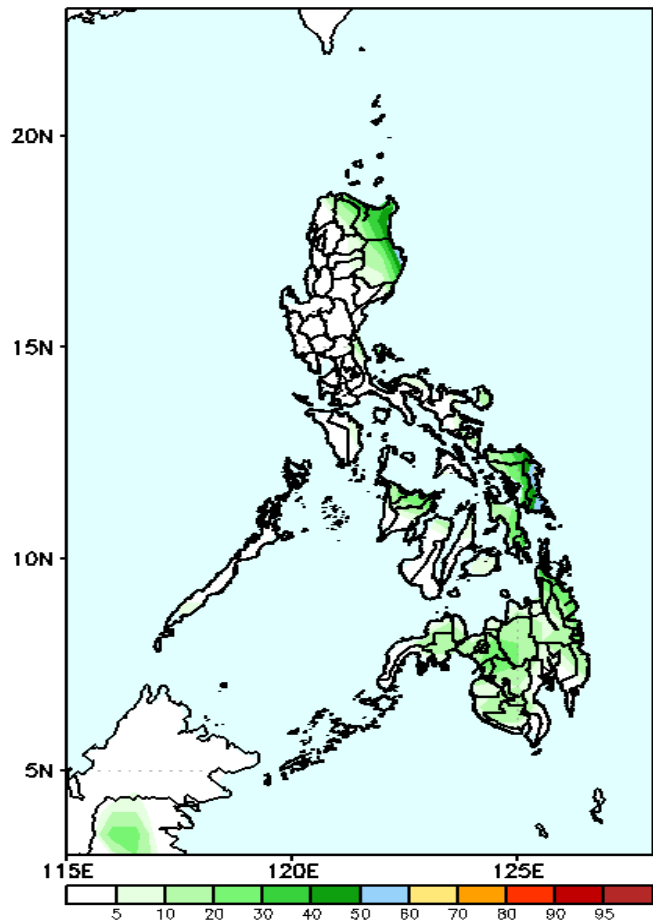
Week 1: Apr 01-07, 2022, 2022

GEFS Week-1 Exceedance Prob. > 100mm
Valid: 20220401 – 20220407



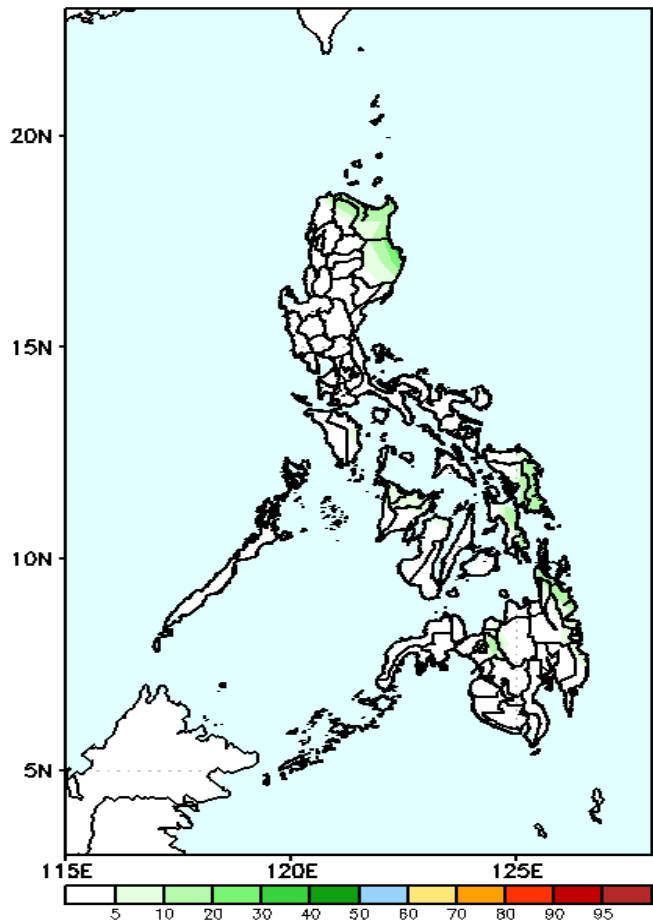
Low probability of rainfall to exceed 100mm in most parts of the country except in Apayao, Cagayan, Isabela, Catanduanes, Capiz, Northern & Eastern Samar, Lanao del Sur and North Cotabato where there is 60-90% during the forecast period.

GEFS Week-1 Exceedance Prob. > 150mm
Valid: 20220401 – 20220407



Low probability of rainfall to exceed 150mm in most parts of the country during the forecast period.

GEFS Week-1 Exceedance Prob. > 200mm
Valid: 20220401 – 20220407



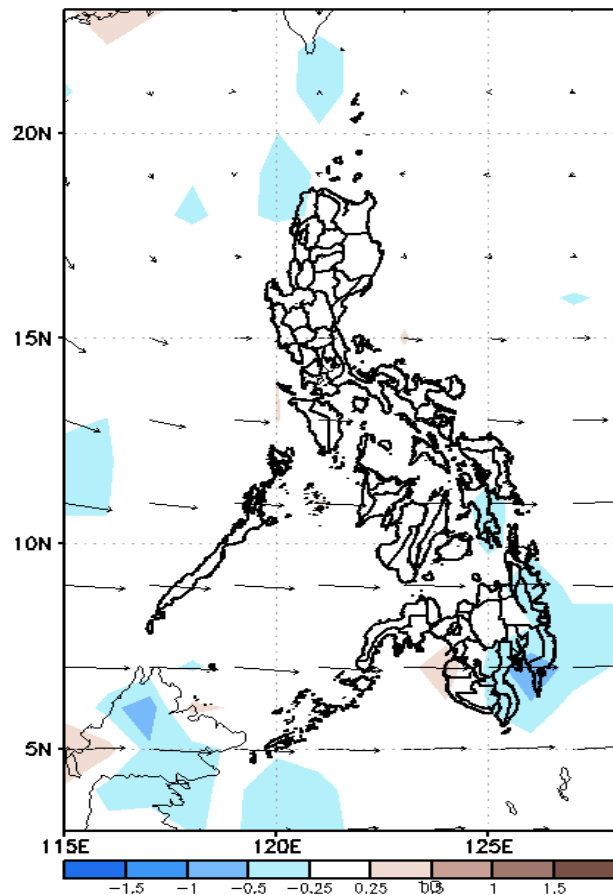
Low probability of rainfall to exceed 200mm in most parts of the country during the forecast period.



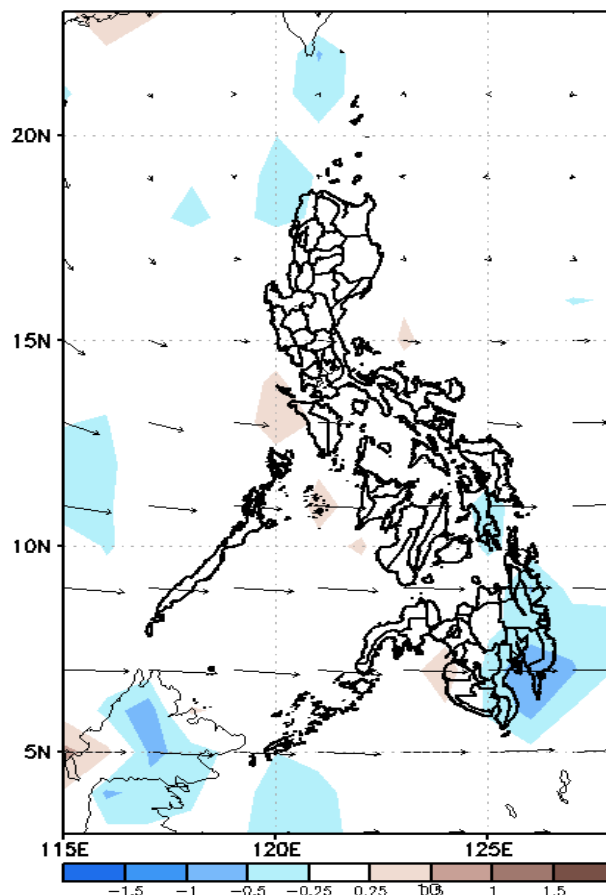
GEFS Week-2 Forecasts: Divergence & Wind Anomaly

Week 2: Apr 08-14, 2022

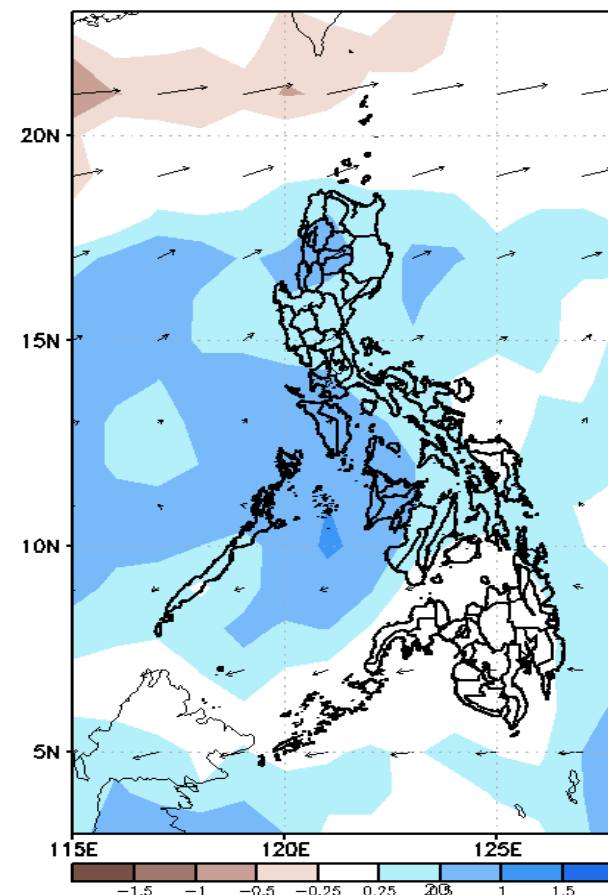
GEFS Week-2 850-hPa Divergence and Wind Anom
Valid: 20220408 – 20220414



GEFS Week-2 700-hPa Divergence and Wind Anom
Valid: 20220408 – 20220414



GEFS week-2 200-hPa Divergence and Wind Anom
Valid: 20220408 – 20220414

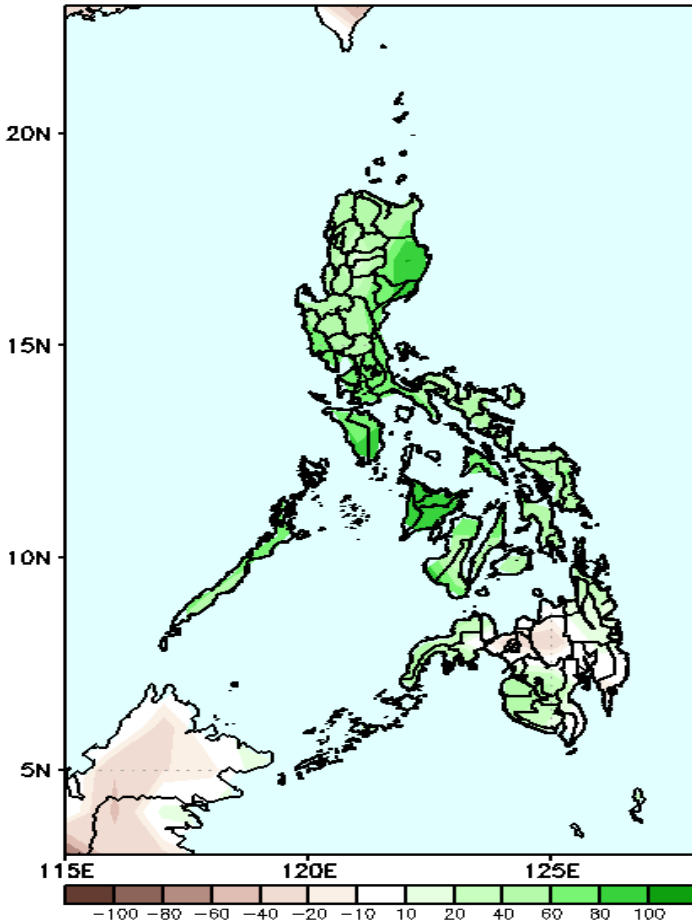


Upper and low level Divergence suggest a likelihood of light to moderate precipitation in most parts of Luzon, Visayas and some parts of Eastern Mindanao due to localized thunderstorm. Easterlies affecting most parts of the country attributing to warmer temperatures during the forecast period.

Precipitation Anomaly and Exceedance Probability > 25/50 mm

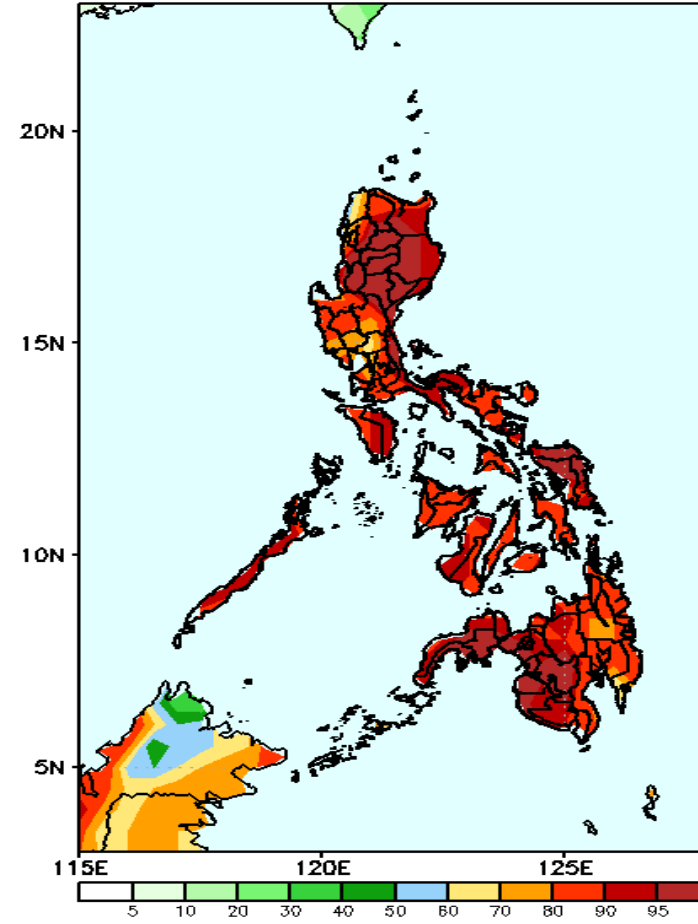
Week 2: Apr 08-14, 2022

GEFS Week-2 Precip. Anomaly
Valid: 20220408 – 20220414



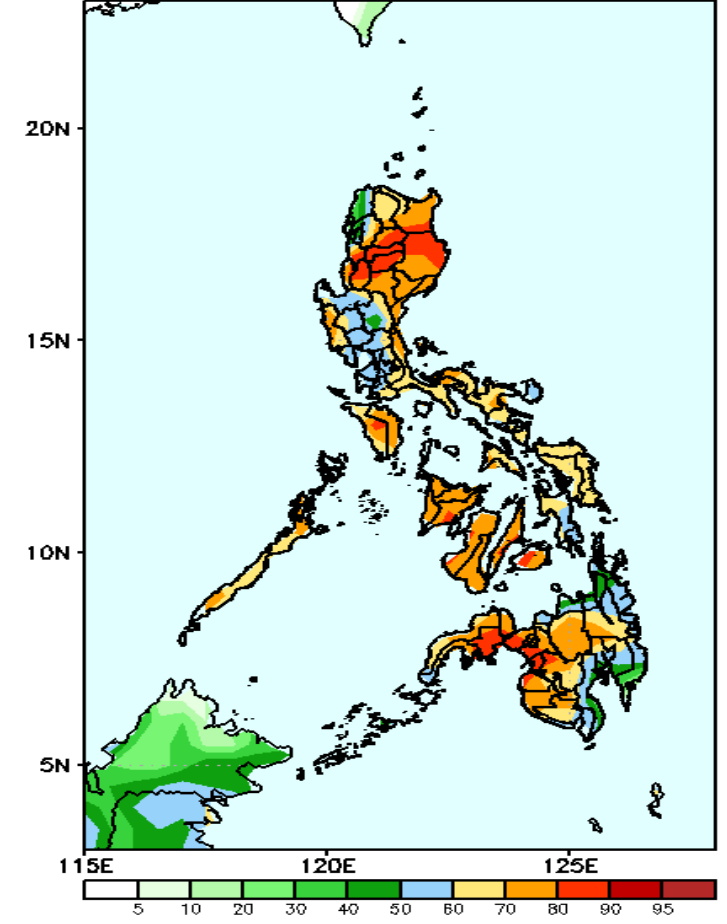
Increase of rainfall of 50-100mm in most parts of the country except in Northern Mindanao where there is 20-40mm rainfall deficit during the forecast period.

GEFS Week-2 Exceedance Prob. > 25mm
Valid: 20220408 – 20220414



High probability of rainfall to exceed 25mm in most parts of the country during the forecast period.

GEFS Week-2 Exceedance Prob. > 50mm
Valid: 20220408 – 20220414

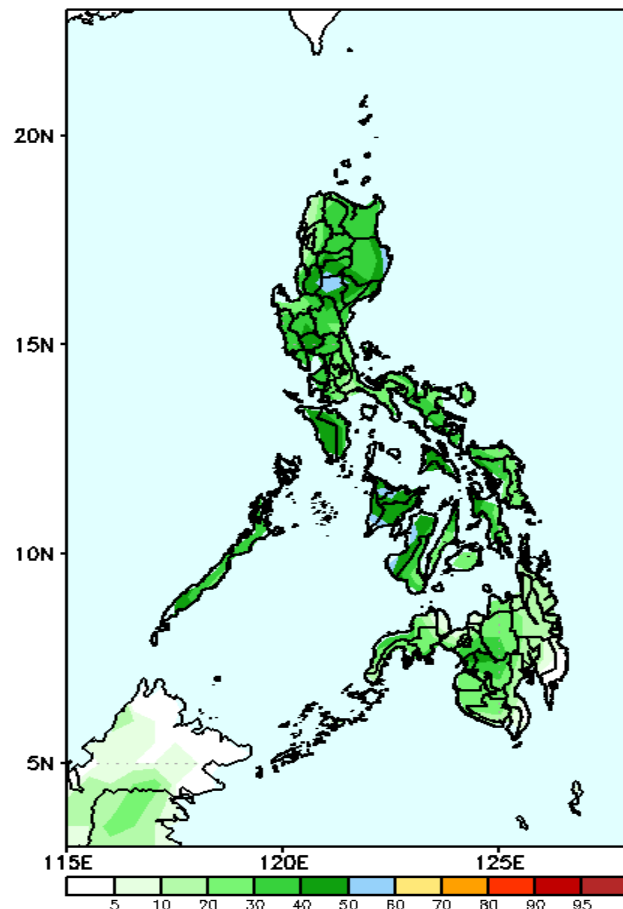


60-95% probability of rainfall to exceed 50mm in most parts of the country during the forecast period.

Exceedance Probability > 100/150/200 mm

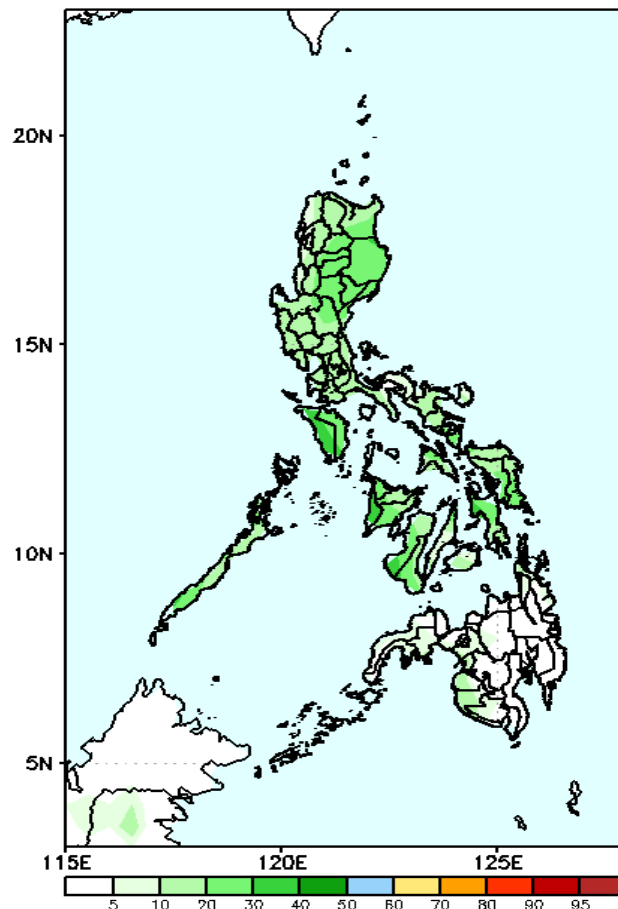
Week 2: Apr 08-14, 2022

GEFS Week-2 Exceedance Prob. > 100mm
Valid: 20220408 – 20220414



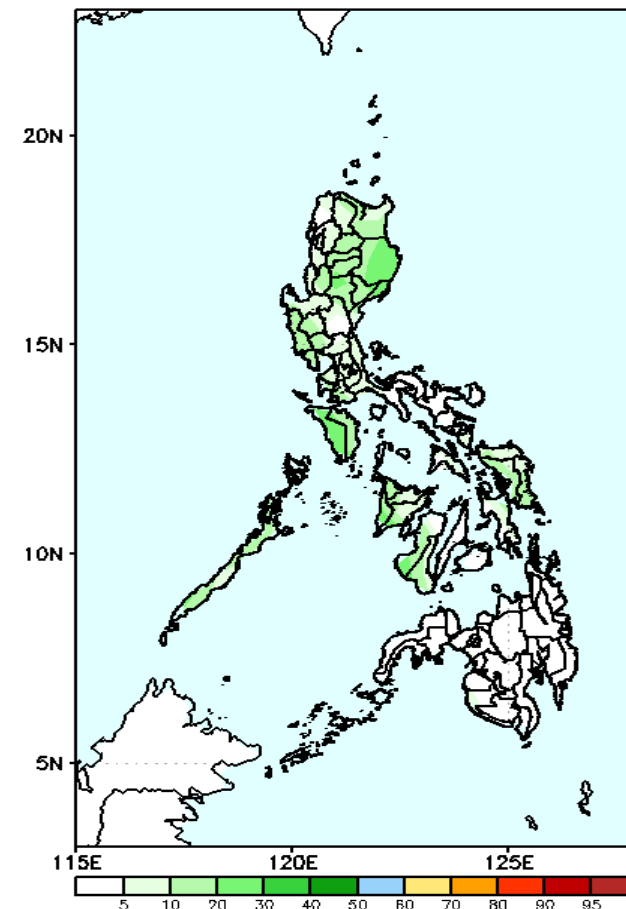
Low probability of rainfall to exceed 150mm in most parts of the country during the forecast period.

GEFS Week-2 Exceedance Prob. > 150mm
Valid: 20220408 – 20220414



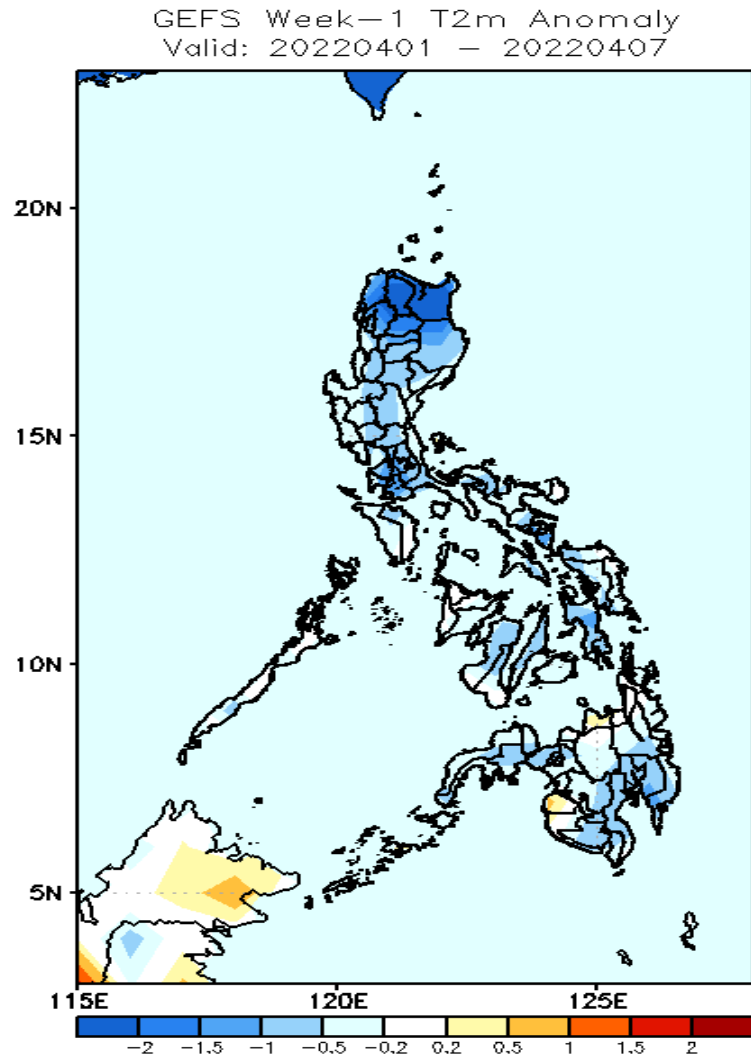
Low probability of rainfall to exceed 150mm in most parts of the country during the forecast period.

GEFS Week-2 Exceedance Prob. > 200mm
Valid: 20220408 – 20220414



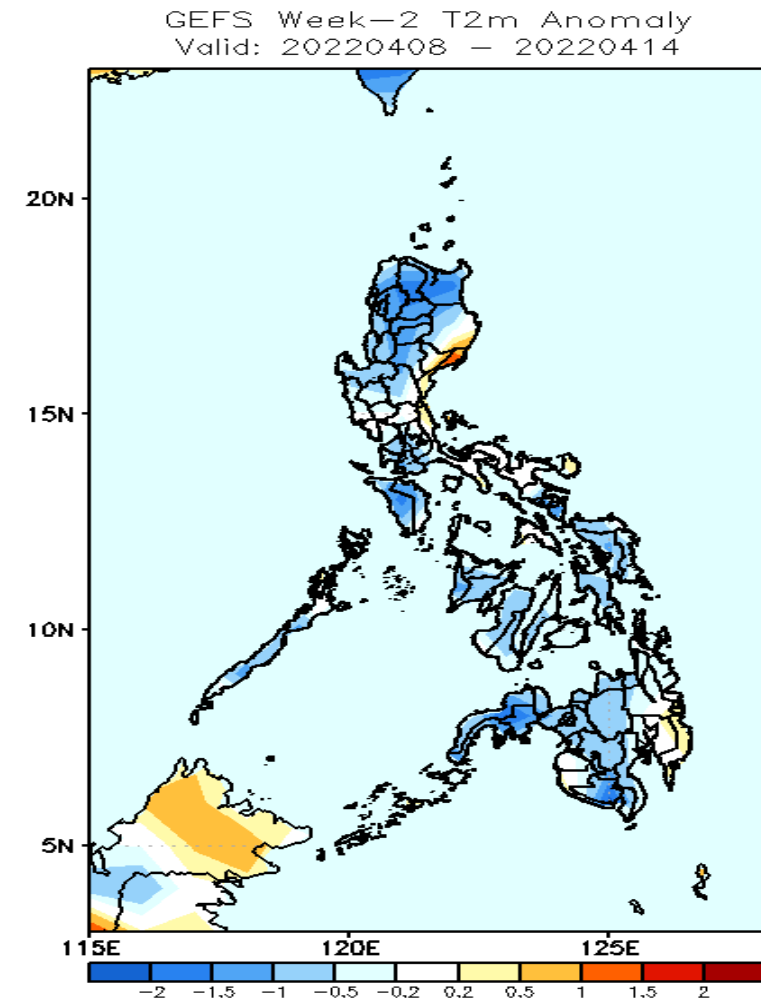
Low probability of rainfall to exceed 200mm in most parts of the country during the forecast period.

GEFS Week-1 & 2 Forecasts: T2m Anomaly



2m Temperature Week 1: Apr 01-07, 2022

Slightly cooler to cooler than average surface air temperature will likely experience in most parts of the country during the forecast period.



2m Temperature Week 2: Apr 08-14, 2022

Slightly cooler to cooler than average surface air temperature will likely experience in most parts of the country except in Aurora during the forecast period.