



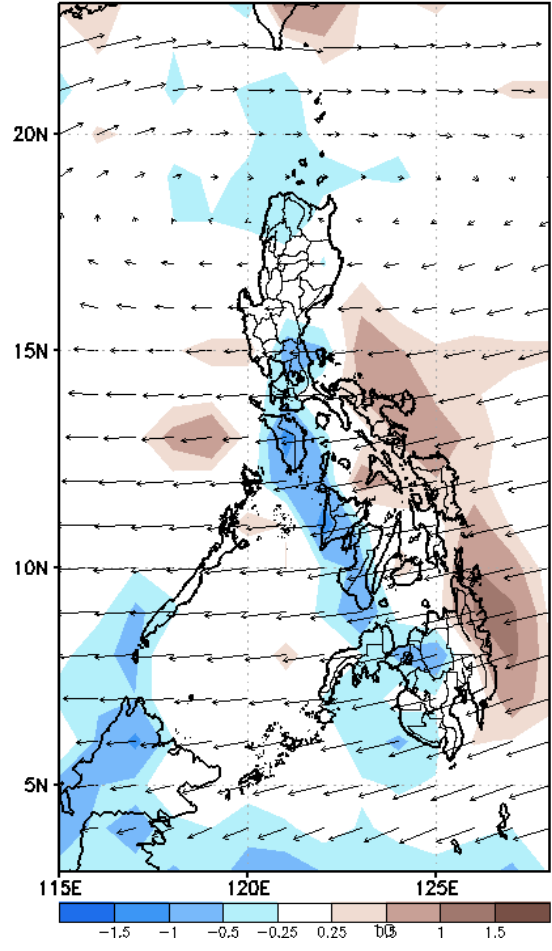
Week 1 & Week 2 Forecast for the Philippines using GEFS Model



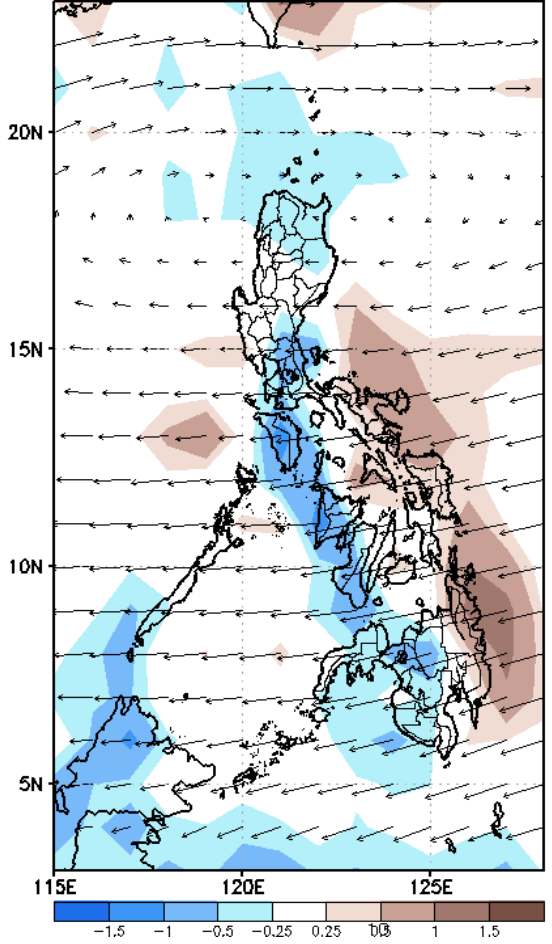
GEFS Week-1 Forecasts: Wind Anomaly Forecast

Week 1: Feb 01 - Feb 07, 2023

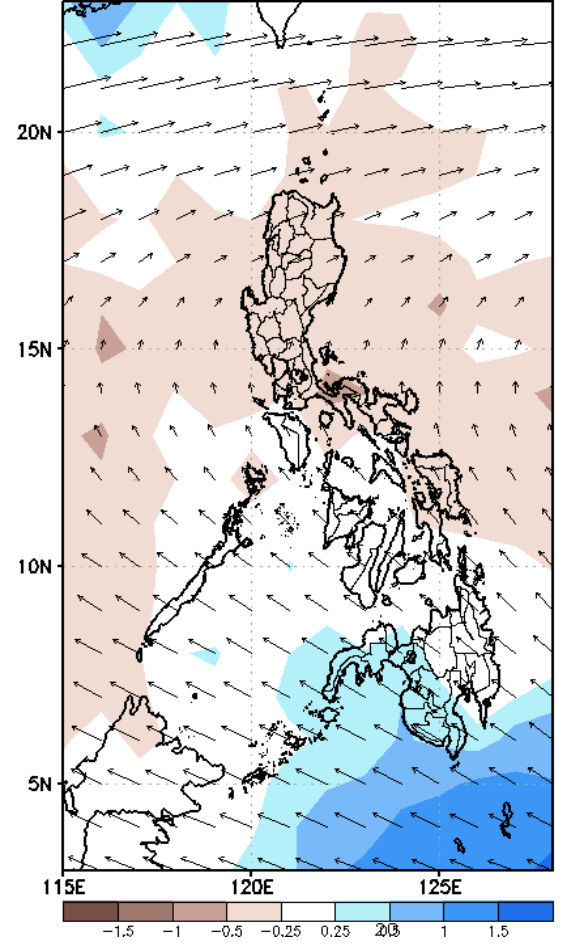
GEFS Week-1 850-hPa Divergence and Wind Anomaly
Valid: 20230201 - 20230207



GEFS Week-1 700-hPa Divergence and Wind Anomaly
Valid: 20230201 - 20230207



GEFS Week-1 200-hPa Divergence and Wind Anomaly
Valid: 20230201 - 20230207

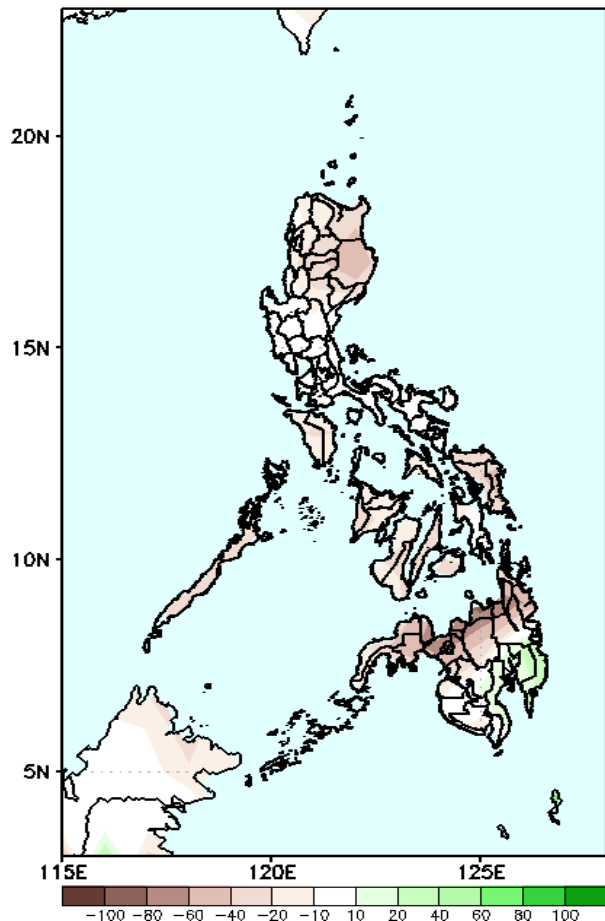


Easterlies is forecasted to affect most parts of the country during the forecast period.

Precipitation Anomaly and Exceedance Probability > 25/50 mm

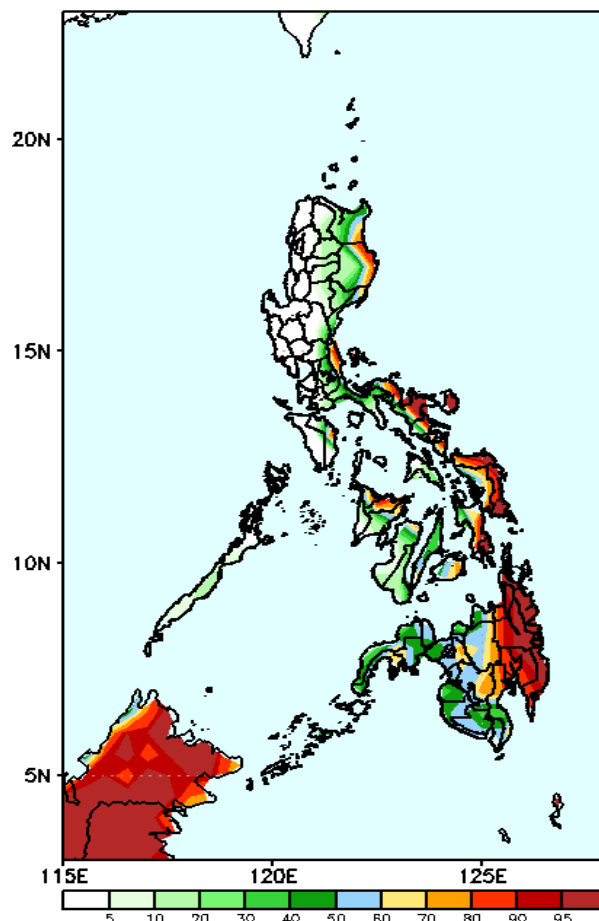
Week 1: Feb 01 - Feb 07, 2023

GEFS Week-1 Precip Anomaly
Valid: 20230201 - 20230207



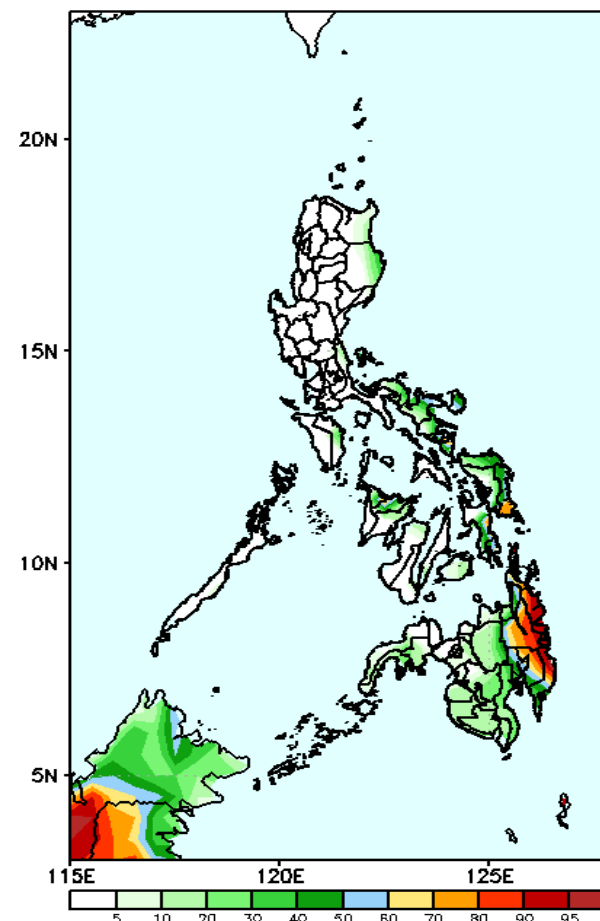
Rainfall deficit of 20-60mm is expected in most parts of the country while 40-60mm increase of rainfall is forecast in most parts of Davao region during the forecast period.

GEFS Week-1 Exceedance Prob. > 25mm
Valid: 20230201 - 20230207



Very high probability of rainfall to exceed 25mm in the eastern section of Cagayan and Isabela, northern part of Quezon, most parts of Bicol Region, Eastern Visayas, Cebu, Capiz, most parts of Eastern Mindanao and some areas in Central Mindanao while less likely for the rest of the country during the forecast period.

GEFS Week-1 Exceedance Prob. > 50mm
Valid: 20230201 - 20230207



High probability of rainfall to exceed 50mm in some areas in Eastern Visayas and most parts of Eastern Mindanao while less likely for the rest of the country during the forecast period.

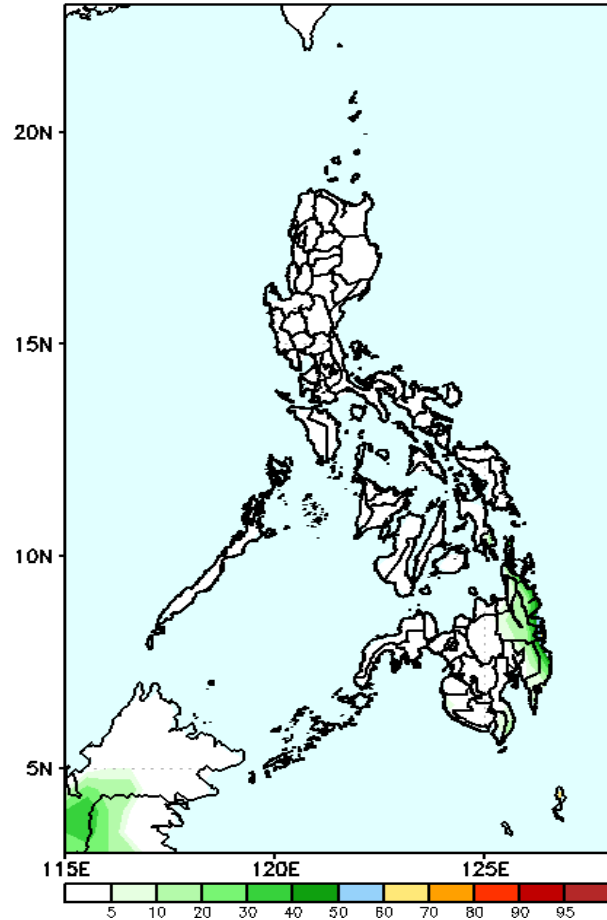
ong
ASA



Exceedance Probability > 100/150/200 mm

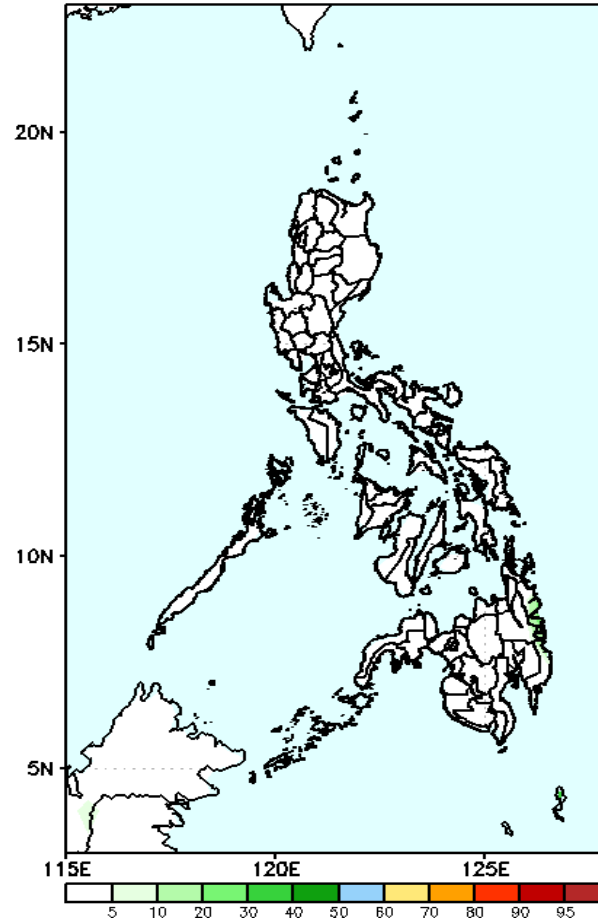
Week 1: Feb 01 - Feb 07, 2023

GEFS Week-1 Exceedance Prob. > 100mm
Valid: 20230201 - 20230207



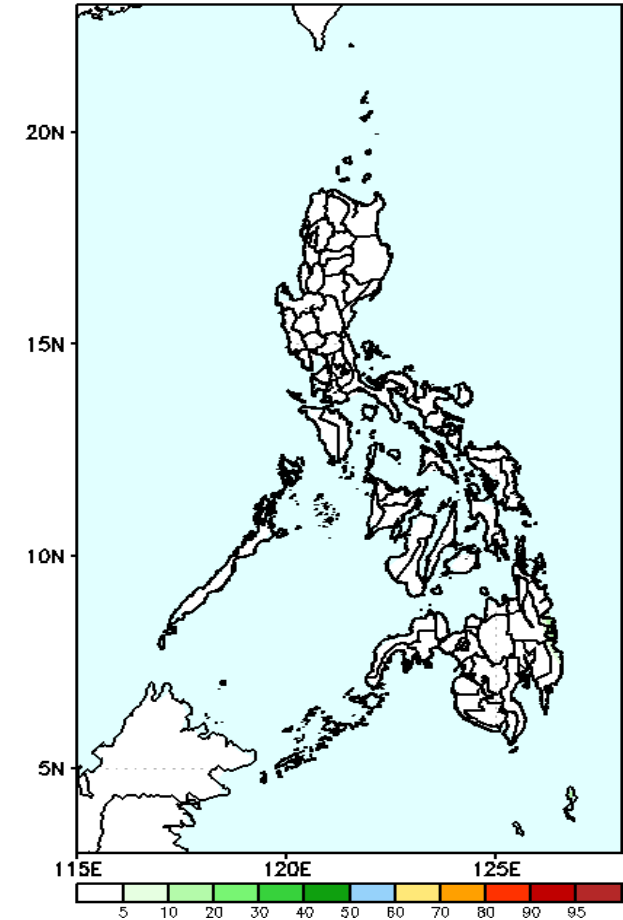
Low probability of rainfall to exceed 100mm in most parts of the country during the forecast period.

GEFS Week-1 Exceedance Prob. > 150mm
Valid: 20230201 - 20230207



Low probability of rainfall to exceed 150mm in most parts of the country during the forecast period.

GEFS Week-1 Exceedance Prob. > 200mm
Valid: 20230201 - 20230207

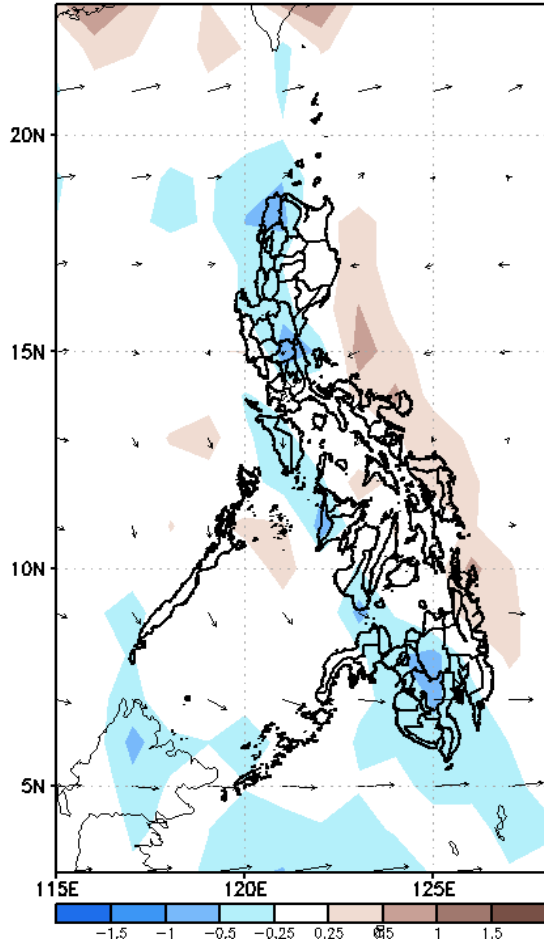


Low probability of rainfall to exceed 200mm in most parts of the country during the forecast period.

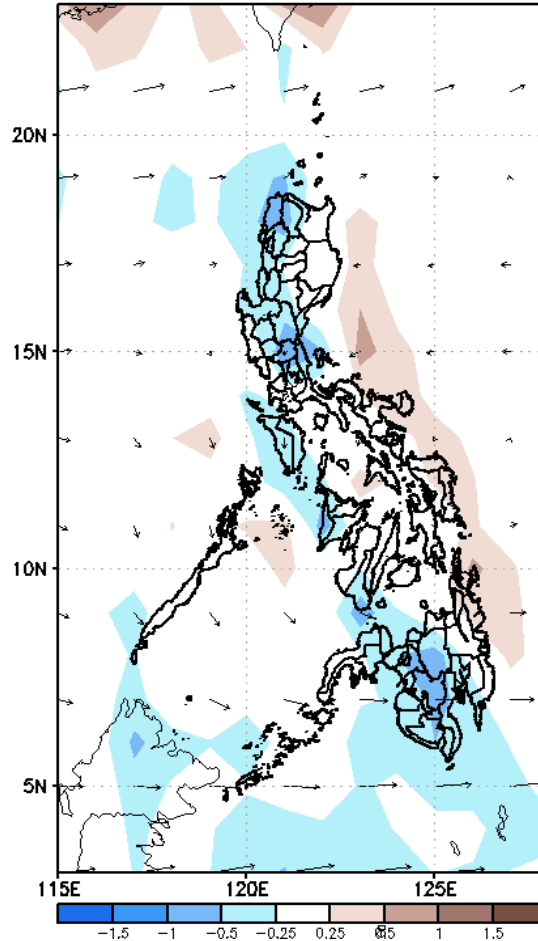
GEFS Week-2 Forecasts: Wind Anomaly Forecast

Week 2: Feb 08 - 14, 2023

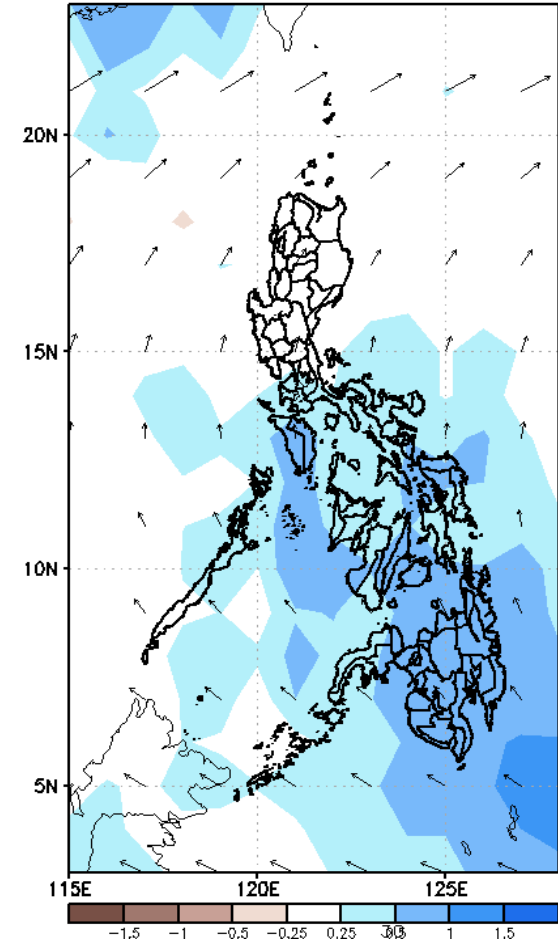
GEFS Week-2 850-hPa Divergence and Wind Anomaly
Valid: 20230208 - 20230214



GEFS Week-2 700-hPa Divergence and Wind Anomaly
Valid: 20230208 - 20230214



GEFS week-2 200-hPa Divergence and Wind Anomaly
Valid: 20230208 - 20230214

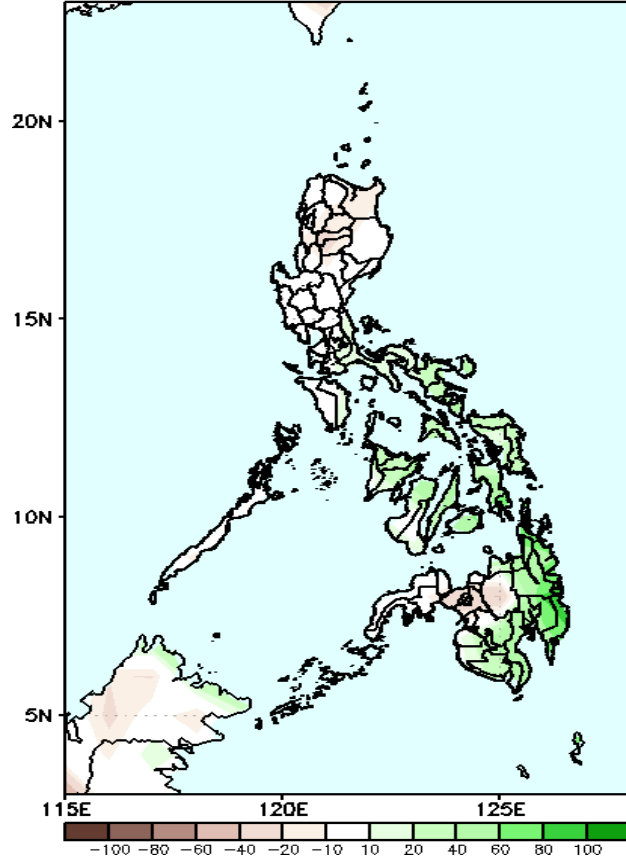


Northeast Monsoon is forecasted to affect the eastern section of Luzon while Easterlies is forecasted to affect the rest of the country during the forecast period.

Precipitation Anomaly and Exceedance Probability > 25/50 mm

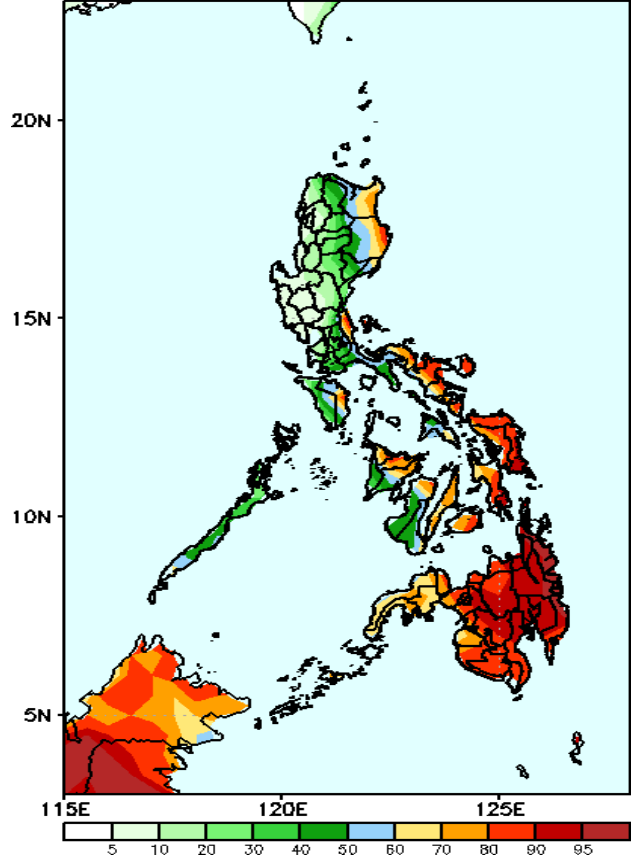
Week 2: Feb 06-12, 2023

GEFS Week-2 Precip Anomaly
Valid: 20230208 – 20230214



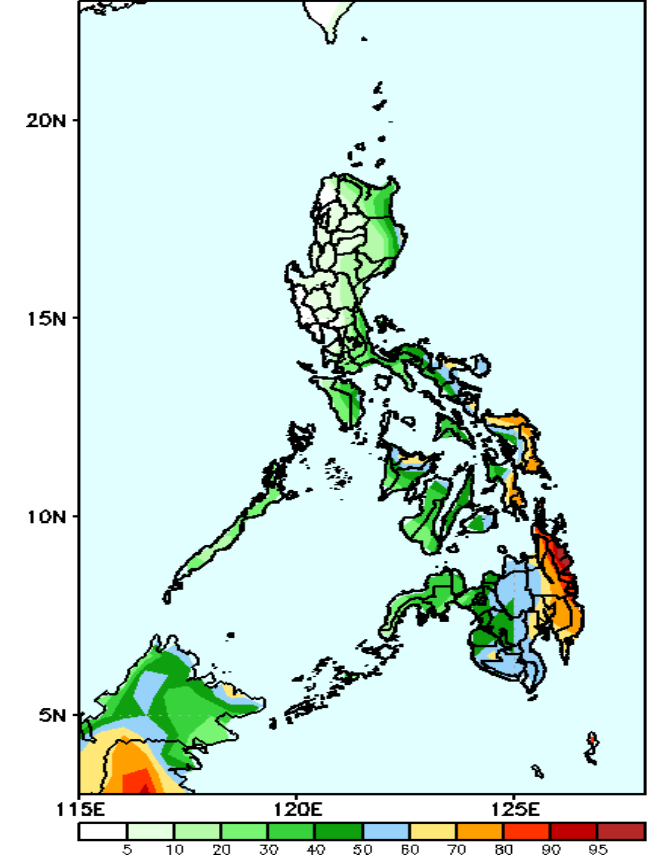
Rainfall deficit of 10 – 20mm is expected in most parts of Luzon (except Bicol region), Bukidnon and Lanao provinces while 20-80mm increase of rainfall is forecasted in most parts of Visayas and Mindanao during the forecast period.

GEFS Week-2 Exceedance Prob. > 25mm
Valid: 20230208 – 20230214



Very high probability of rainfall to exceed 25mm in Cagayan, Isabela, northern part of Quezon, most parts of Bicol Region, Eastern and Central Visayas, northern portion of Western Visayas and most parts of Mindanao while less likely for the rest of the country during the forecast period.

GEFS Week-2 Exceedance Prob. > 50mm
Valid: 20230208 – 20230214



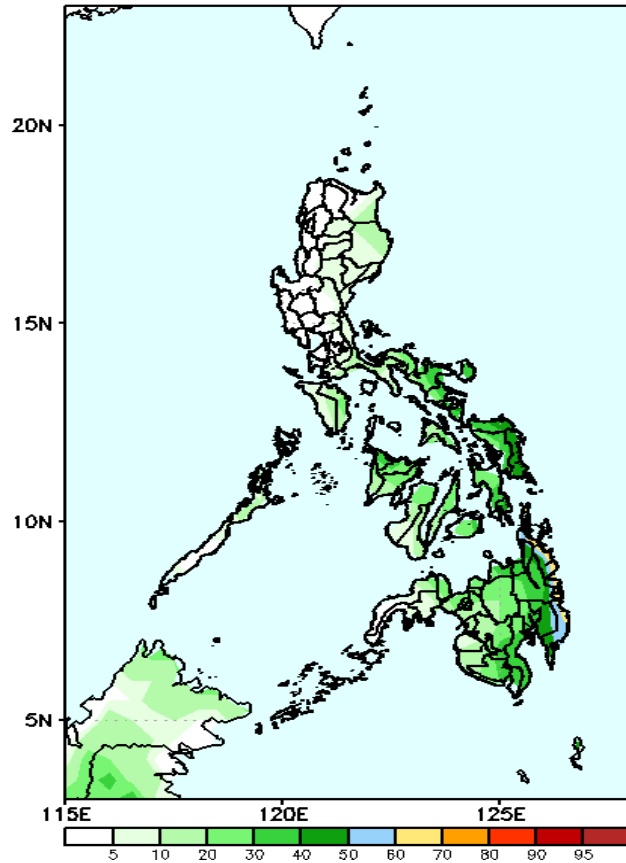
High probability of rainfall to exceed 50mm in some areas in Bicol region, most parts of Eastern Visayas, Capiz, most parts of Eastern Mindanao and some areas in Central Mindanao while less likely for the rest of the country during the forecast period.



Exceedance Probability > 100/150/200 mm

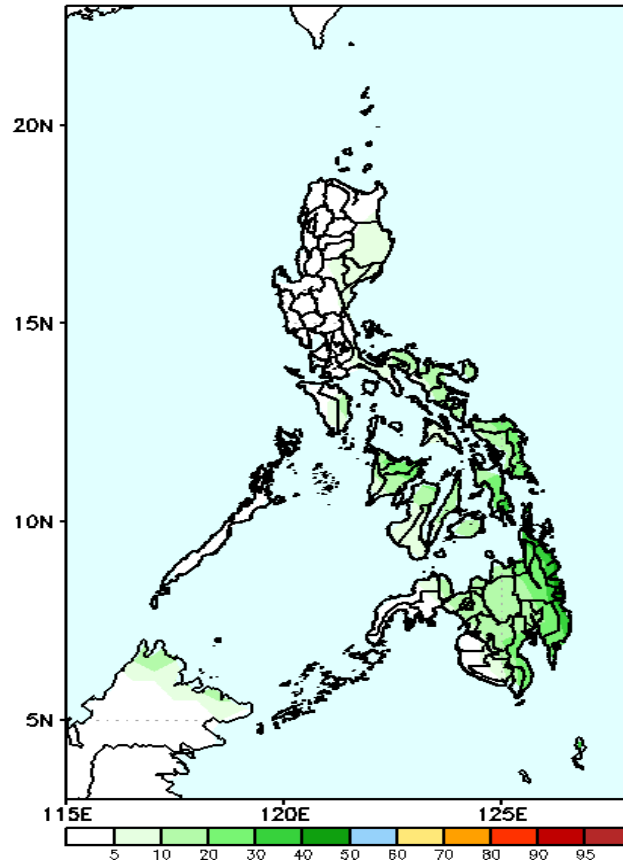
Week 2: Feb 08 - 14, 2023

GEFS Week-2 Exceedance Prob. > 100mm
Valid: 20230208 - 20230214



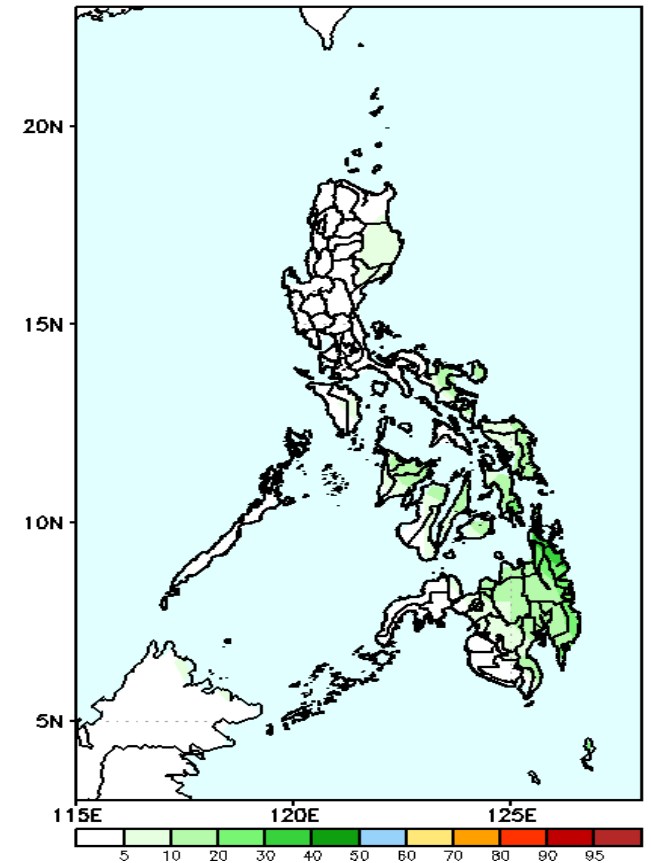
Low probability of rainfall to exceed 100mm in most parts of the country during the forecast period.

GEFS Week-2 Exceedance Prob. > 150mm
Valid: 20230208 - 20230214



Low probability of rainfall to exceed 150mm in most parts of the country during the forecast period.

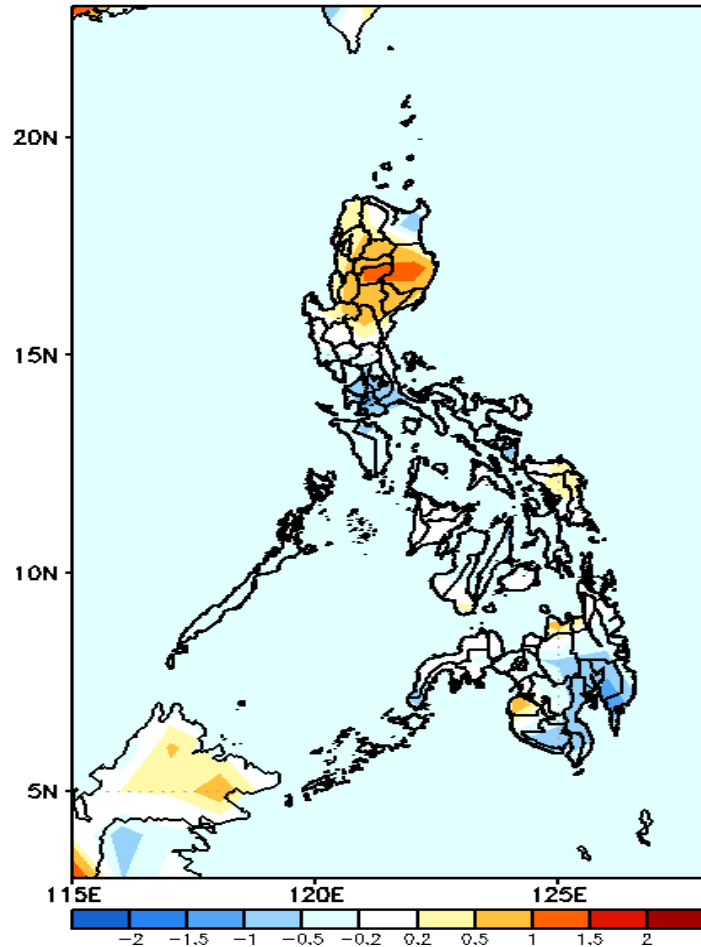
GEFS Week-2 Exceedance Prob. > 200mm
Valid: 20230208 - 20230214



Low probability of rainfall to exceed 200mm in most parts of the country during the forecast period.

GEFS Week-1 & 2 Forecasts: T2m Anomaly

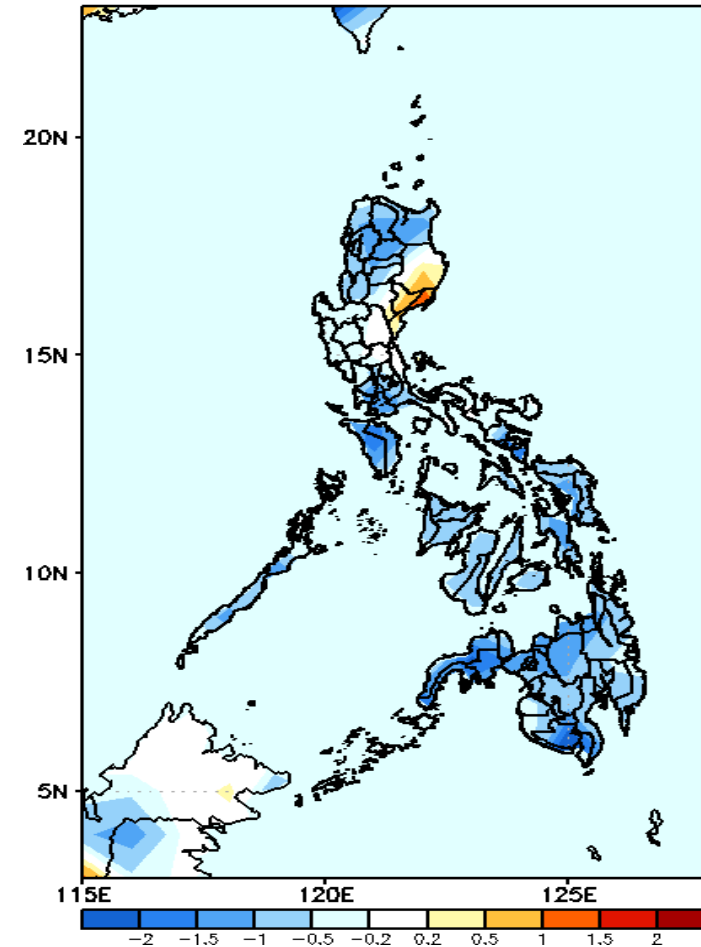
GEFS Week-1 T2m Anomaly
Valid: 20230201 - 20230207



2m Temperature Week 1: Feb 01 - Feb 07, 2023

Average to cooler than average surface air temperature will likely experience in most parts of the country except most parts of Northern Luzon, Nueva Ecija, Samar provinces, Misamis Oriental and Maguindanao where slightly warmer temperature is expected during the forecast period.

GEFS Week-2 T2m Anomaly
Valid: 20230208 - 20230214



2m Temperature Week 2: Feb 08 -14, 2023

Average to cooler than average surface air temperature will likely experience in most parts of the country except Isabela, Quirino and Aurora where slightly warmer to warmer temperature is expected during the forecast period.