



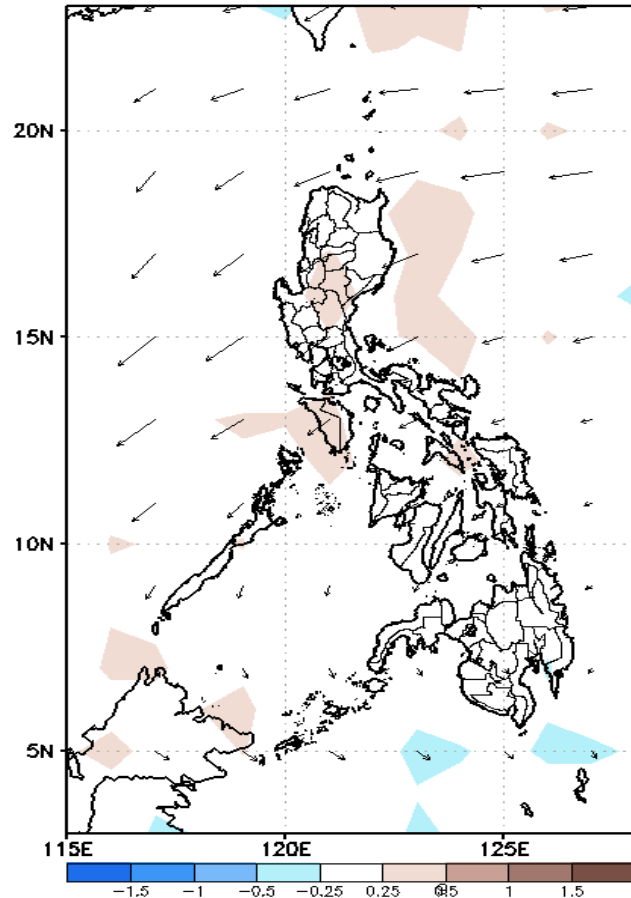
# Week 1 & Week 2 Forecast for the Philippines using GEFS Model



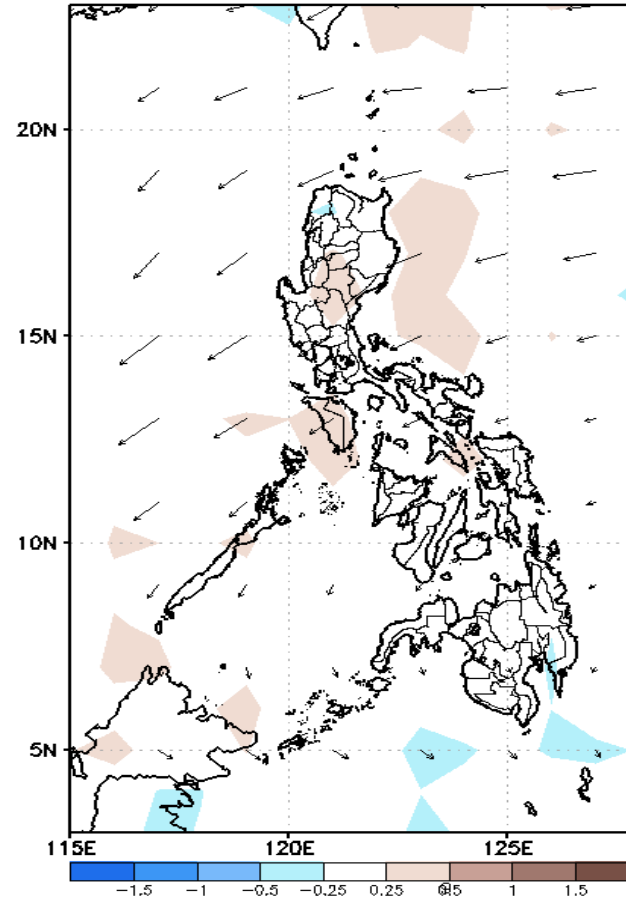
# GEFS Week-1 Forecasts: Divergence & Wind Anomaly

**Week 1: Jul 01-07, 2021**

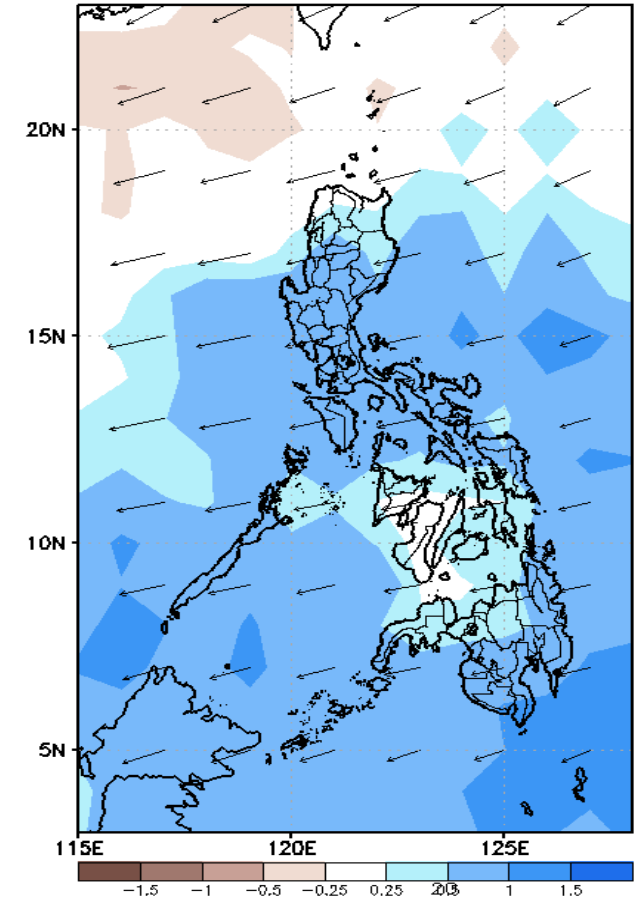
GEFS Week-1 850-hPa Divergence and Wind Anom  
Valid: 20210701 - 20210707



GEFS Week-1 700-hPa Divergence and Wind Anom  
Valid: 20210701 - 20210707



GEFS Week-1 200-hPa Divergence and Wind Anom  
Valid: 20210701 - 20210707

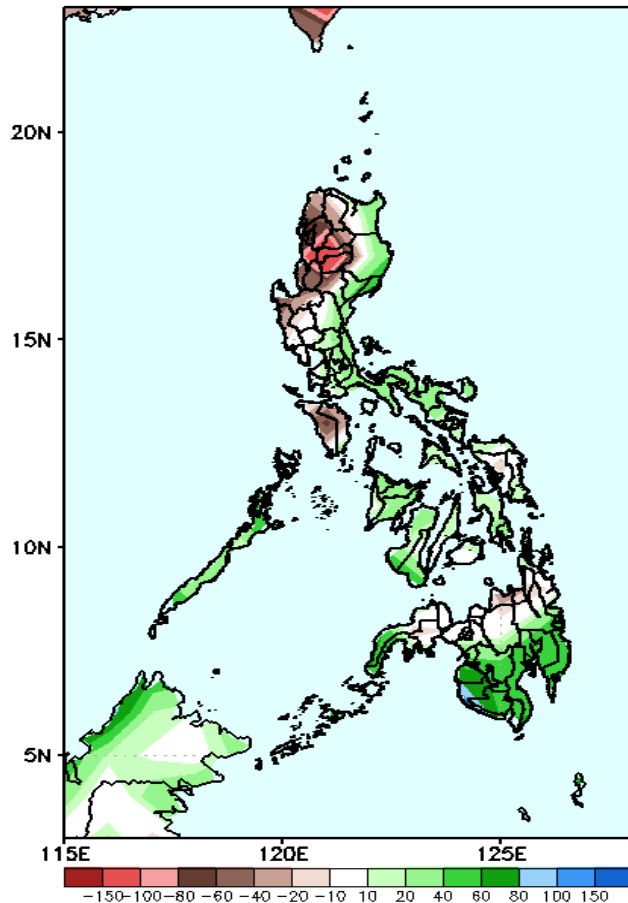


Upper and low level Divergence suggest likelihood of precipitation in most parts of the country. Southwest monsoon affecting Western Luzon while Easterlies affecting the rest of the country. Attributing to warmer temperature and higher heat index; with humid environment(especially in the western section of the country) during the forecast period.

# Precipitation Anomaly and Exceedance Probability > 25/50 mm

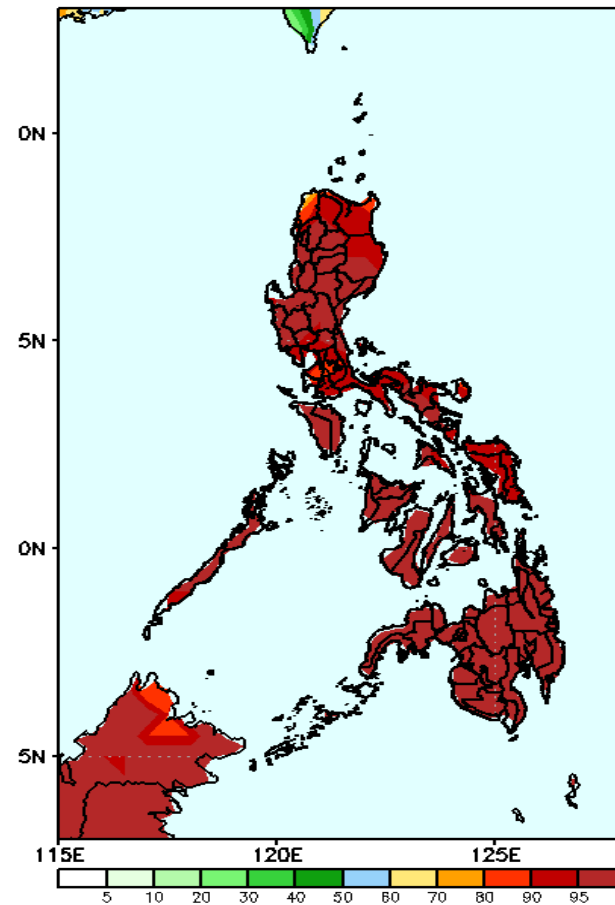
**Week 1: Jul 01-07, 2021**

GEFS Week-1 Precip Anomaly  
Valid: 20210701 - 20210707



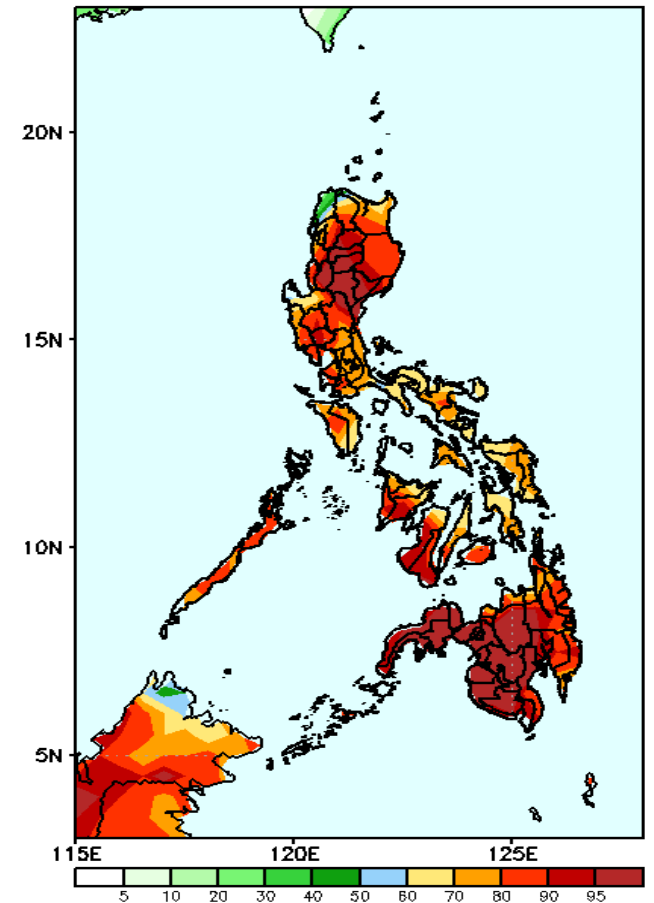
Rainfall deficit of up to 150mm is expected in Cordillera & Ilocos Region and Mindoro while 40-80mm increase of rainfall for the rest of the country during the forecast period.

GEFS Week-1 Exceedance Prob. > 25mm  
Valid: 20210701 - 20210707



High probability of rainfall to exceed 25mm in most parts of the country during the forecast period.

GEFS Week-1 Exceedance Prob. > 50mm  
Valid: 20210701 - 20210707



High probability of rainfall to exceed 50mm in most parts of the country during the forecast period.

long  
GASA

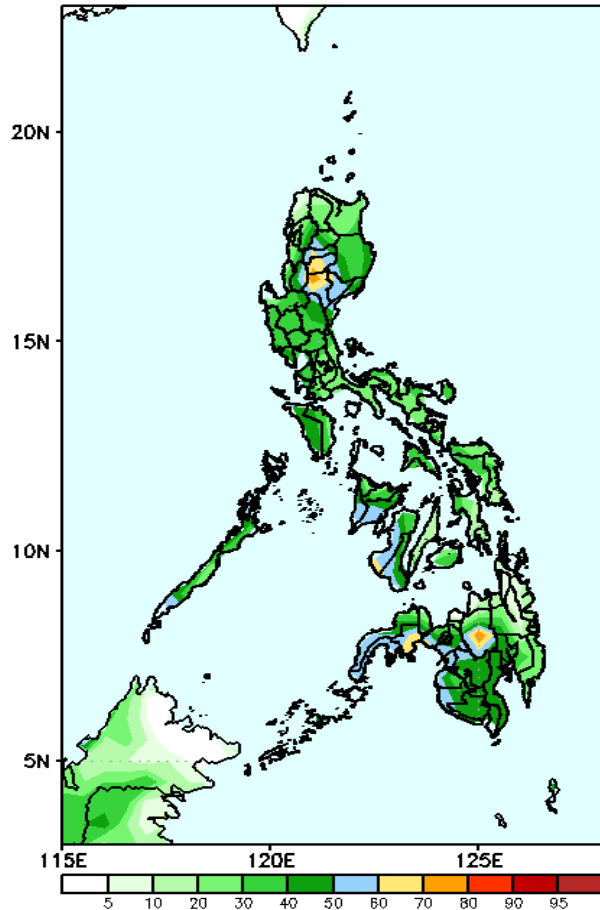


The Weather and Climate Authority

# Exceedance Probability > 100/150/200 mm

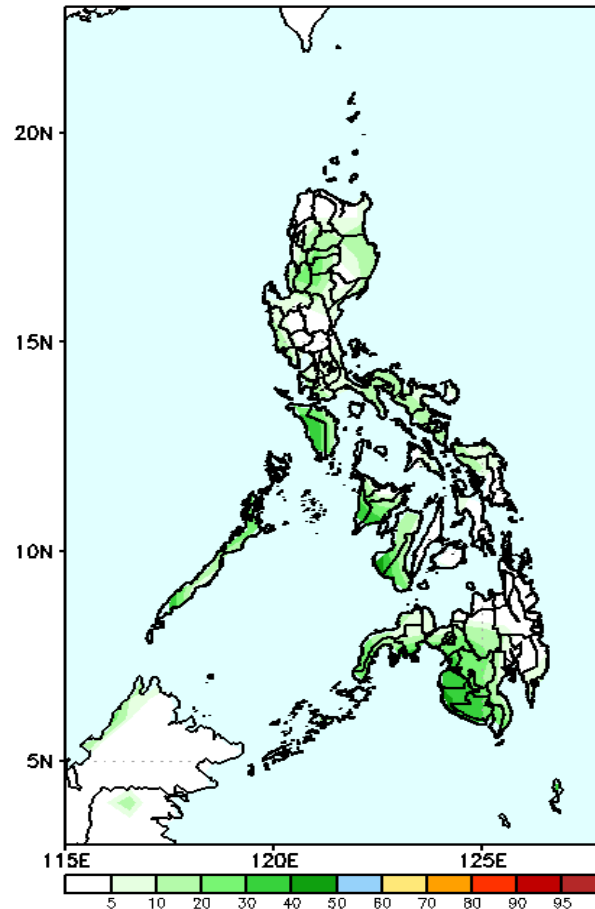
**Week 1: Jul 01-07, 2021**

GEFS Week-1 Exceedance Prob. > 100mm  
Valid: 20210701 - 20210707



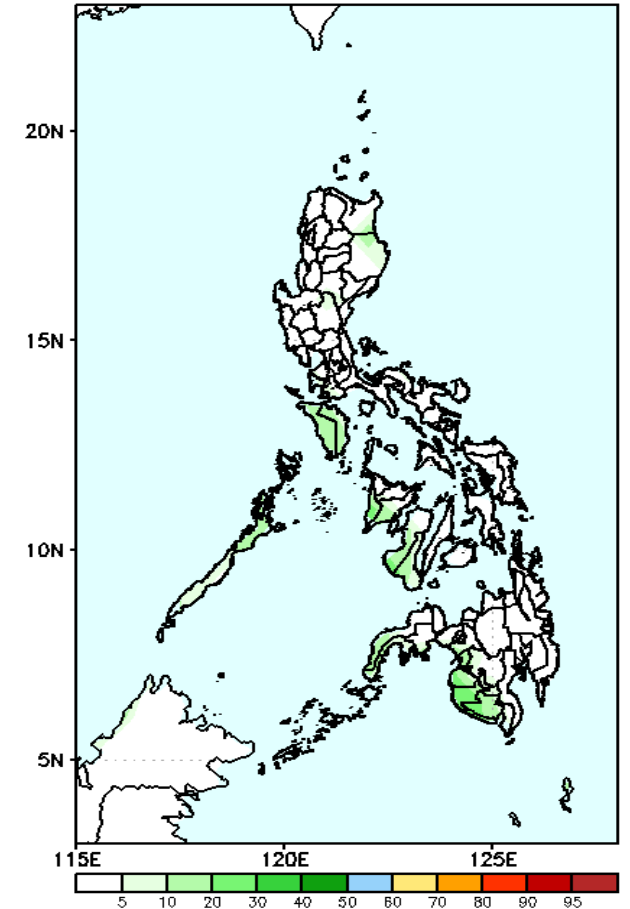
50% probability of rainfall to exceed 100mm in most parts of the country except in Mt. Province, Ifugao & Bukidnon where there is 60-85% probability during the forecast period.

GEFS Week-1 Exceedance Prob. > 150mm  
Valid: 20210701 - 20210707



Less probability of rainfall to exceed 150mm in most parts of the country during the forecast period.

GEFS Week-1 Exceedance Prob. > 200mm  
Valid: 20210701 - 20210707



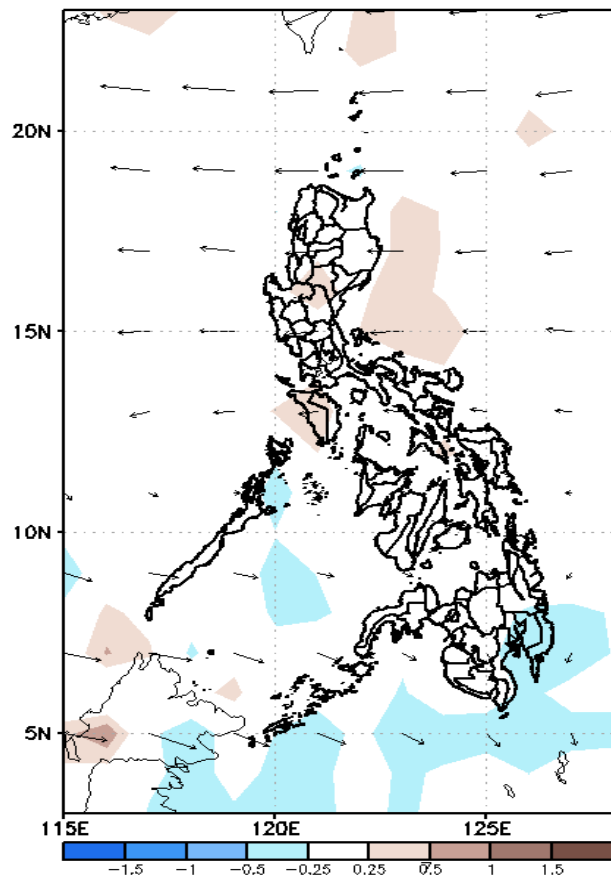
Less probability of rainfall to exceed 200mm in most parts of the country during the forecast period.



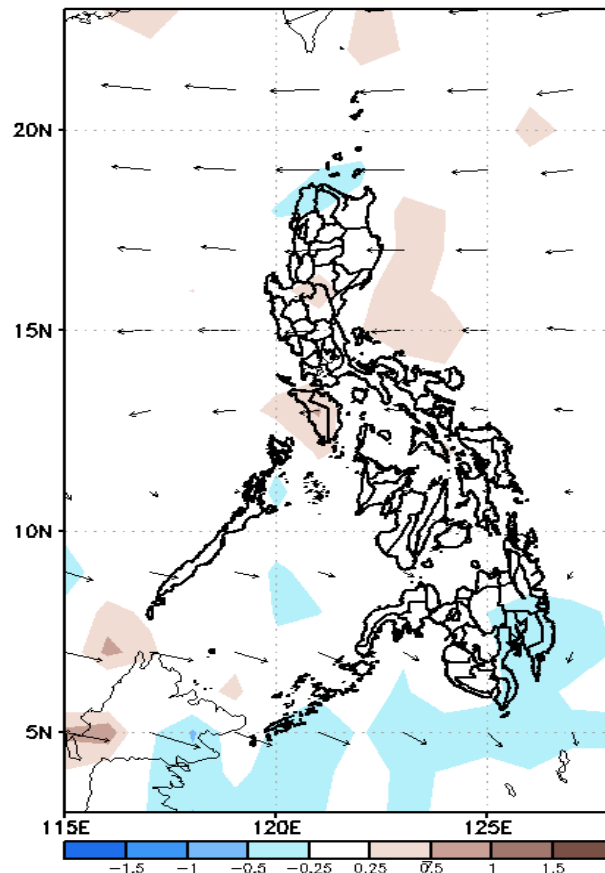
# GEFS Week-2 Forecasts: Divergence & Wind Anomaly

**Week 2: July 08-14, 2021**

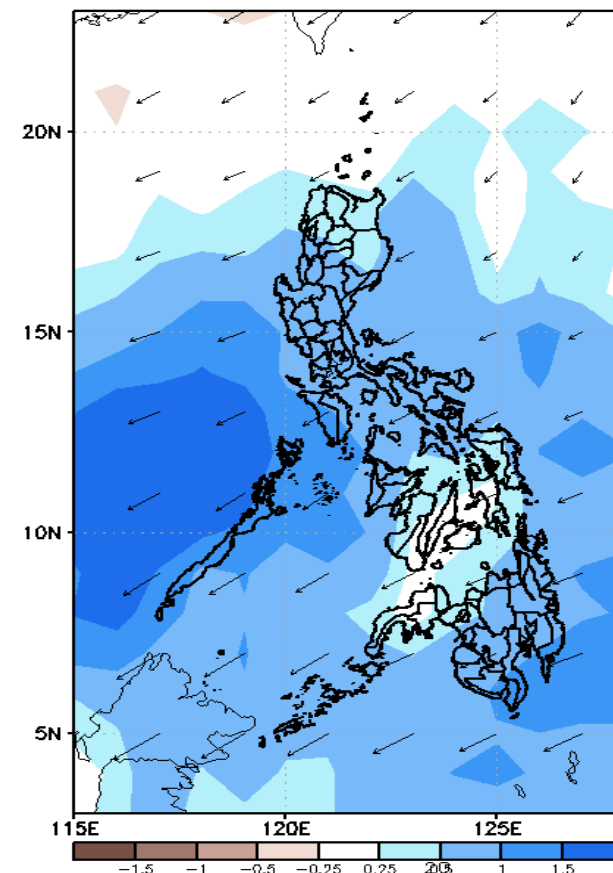
GEFS Week-2 850-hPa Divergence and Wind Anom.  
Valid: 20210708 - 20210714



GEFS Week-2 700-hPa Divergence and Wind Anom.  
Valid: 20210708 - 20210714



GEFS week-2 200-hPa Divergence and Wind Anom.  
Valid: 20210708 - 20210714

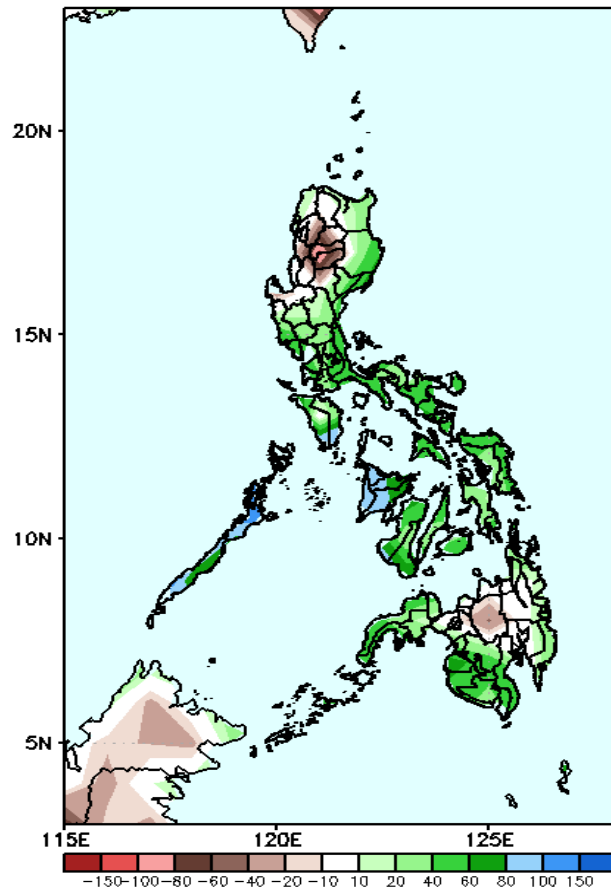


Upper and low level Divergence suggest likelihood of precipitation in most parts of the country. Southwest monsoon affecting Western Luzon and Western Visayas while Easterlies affecting the remaining parts of the country. Attributing to warmer temperature and higher heat index; with humid environment(especially in the western section of the country) during the forecast period.

# Precipitation Anomaly and Exceedance Probability > 25/50 mm

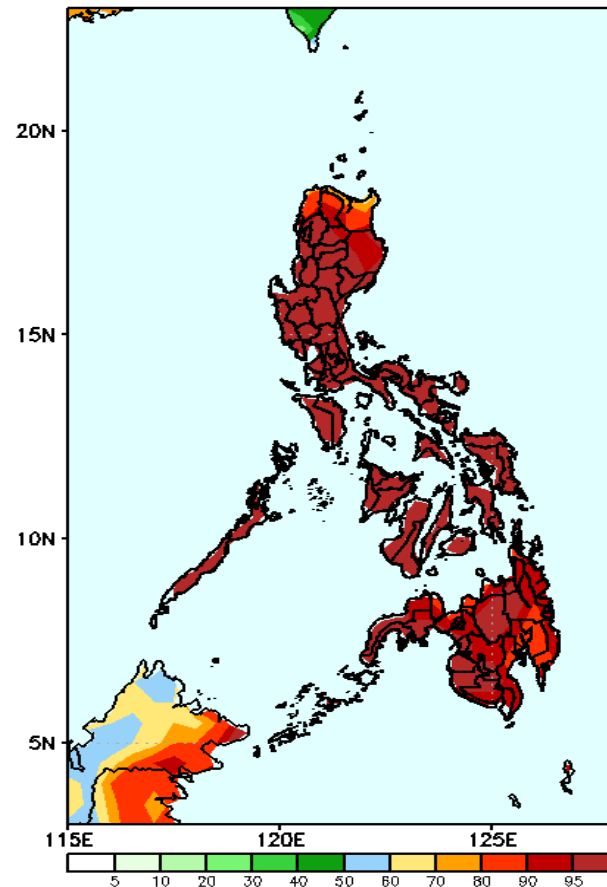
**Week 2: July 08-14, 2021**

GEFS Week-2 Precip Anomaly  
Valid: 20210708 – 20210714



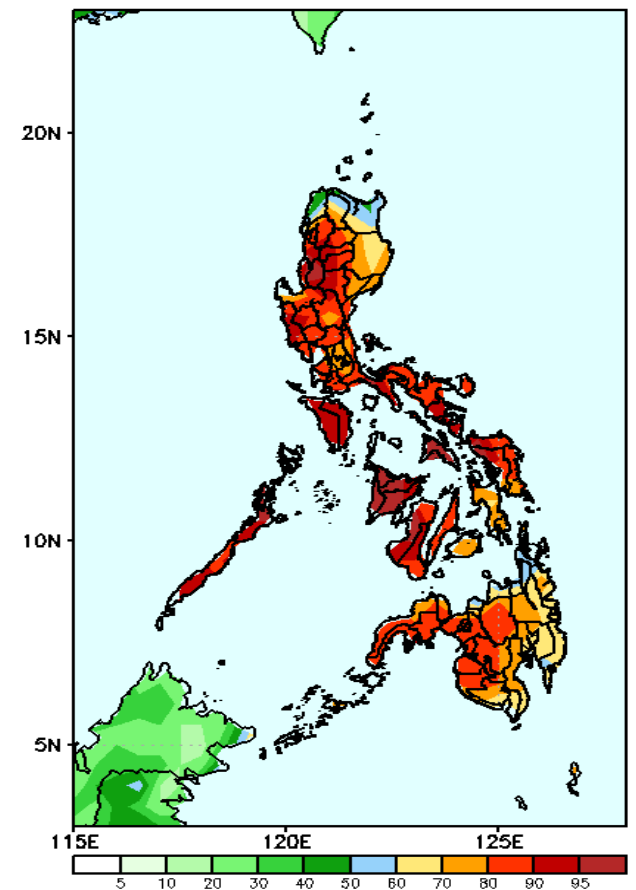
Rainfall deficit of up to 40-100mm is expected in Cordillera & Ilocos Region and Bukidnon while 40-100mm increase of rainfall for the rest of the country during the forecast period.

GEFS Week-2 Exceedance Prob. > 25mm  
Valid: 20210708 – 20210714



High probability of rainfall to exceed 25mm in most parts of the country during the forecast period.

GEFS Week-2 Exceedance Prob. > 50mm  
Valid: 20210708 – 20210714



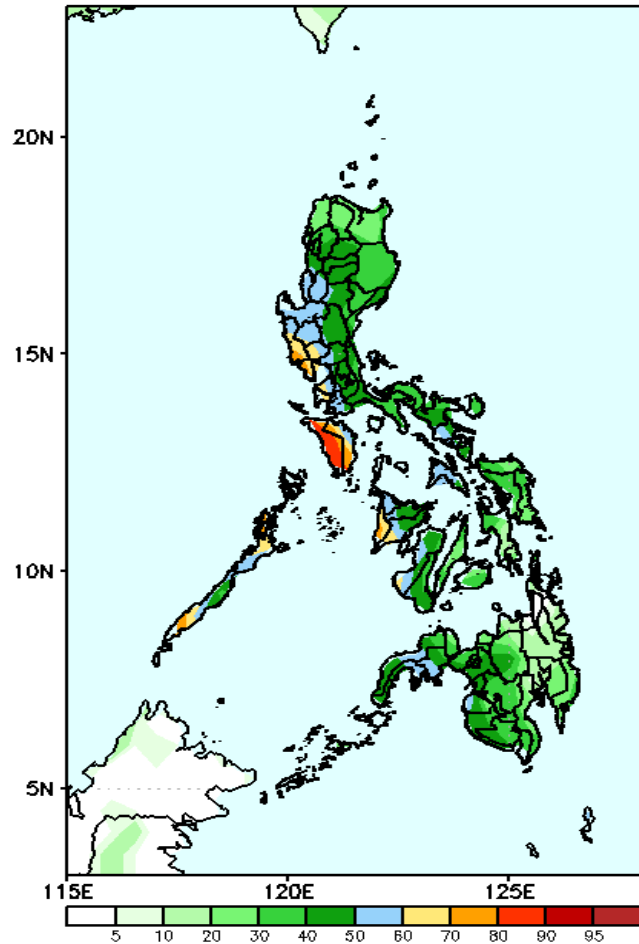
High probability of rainfall to exceed 50mm in most parts of the country during the forecast period.



# Exceedance Probability > 100/150/200 mm

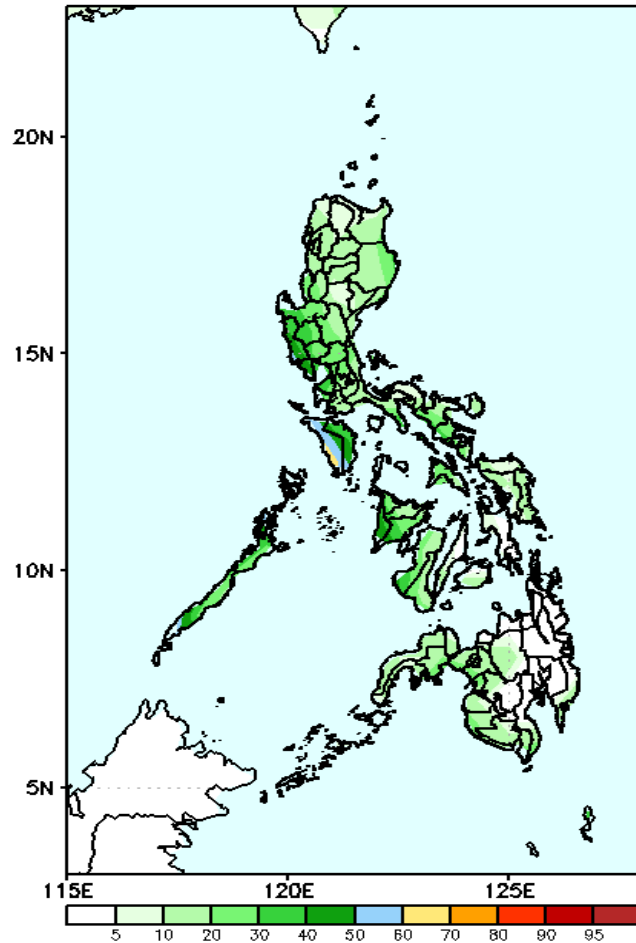
**Week 2: July 08-14, 2021**

GEFS Week-2 Exceedance Prob. > 100mm  
Valid: 20210708 – 20210714



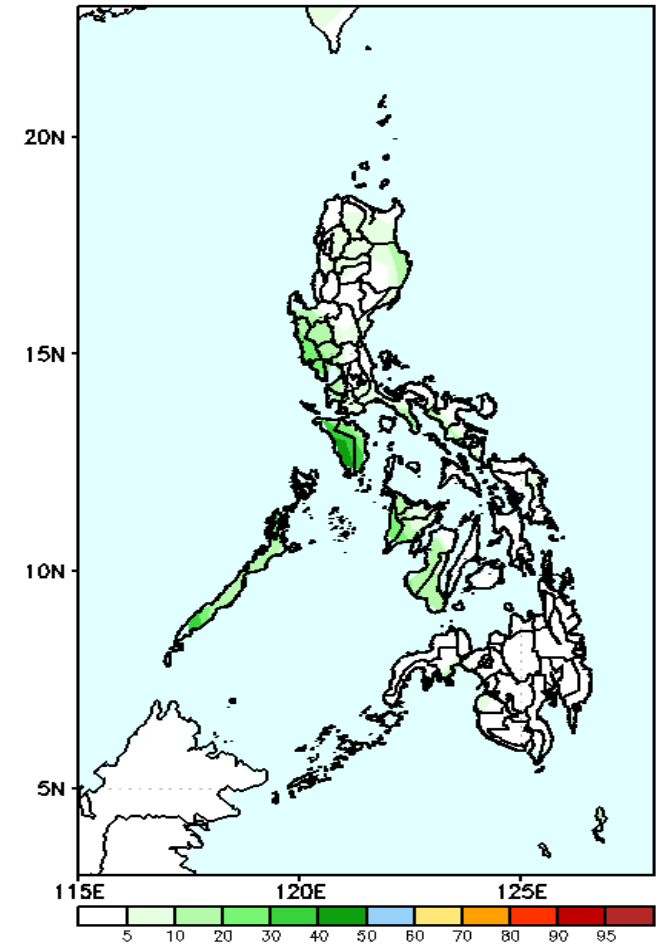
50-60 % probability of rainfall to exceed 100mm in most parts of the country except in Zambales, Bataan, Mindoro and southern Palawan where there is 70-90% probability during the forecast period.

GEFS Week-2 Exceedance Prob. > 150mm  
Valid: 20210708 – 20210714



Less probability of rainfall to exceed 150mm in most parts of the country during the forecast period.

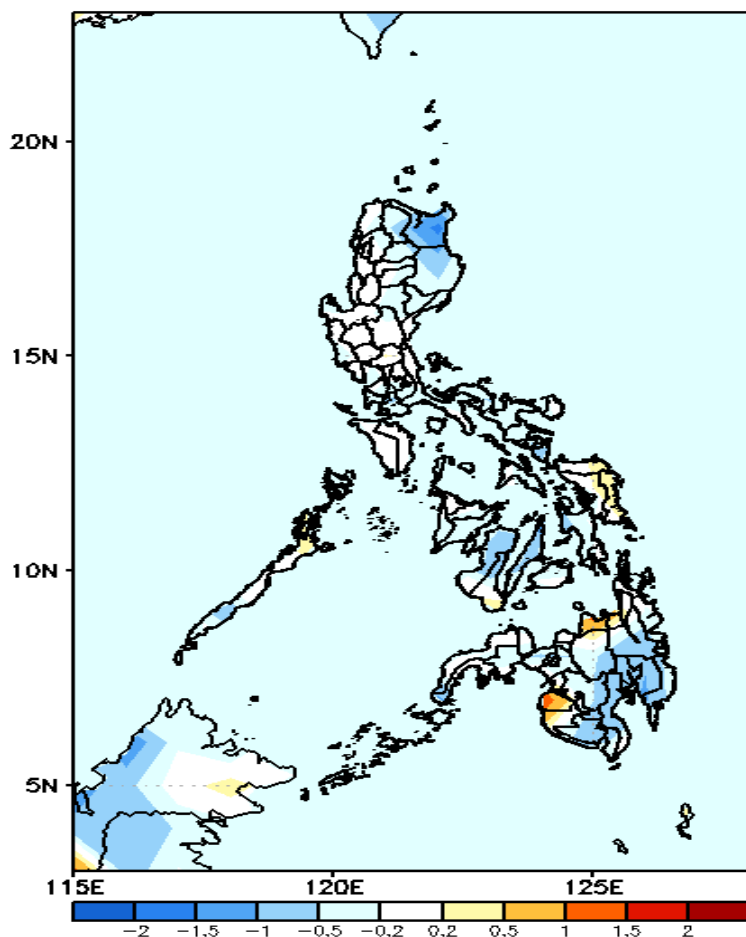
GEFS Week-2 Exceedance Prob. > 200mm  
Valid: 20210708 – 20210714



Less probability of rainfall to exceed 200mm in most parts of the country during the forecast period.

# GEFS Week-1 & 2 Forecasts: T2m Anomaly

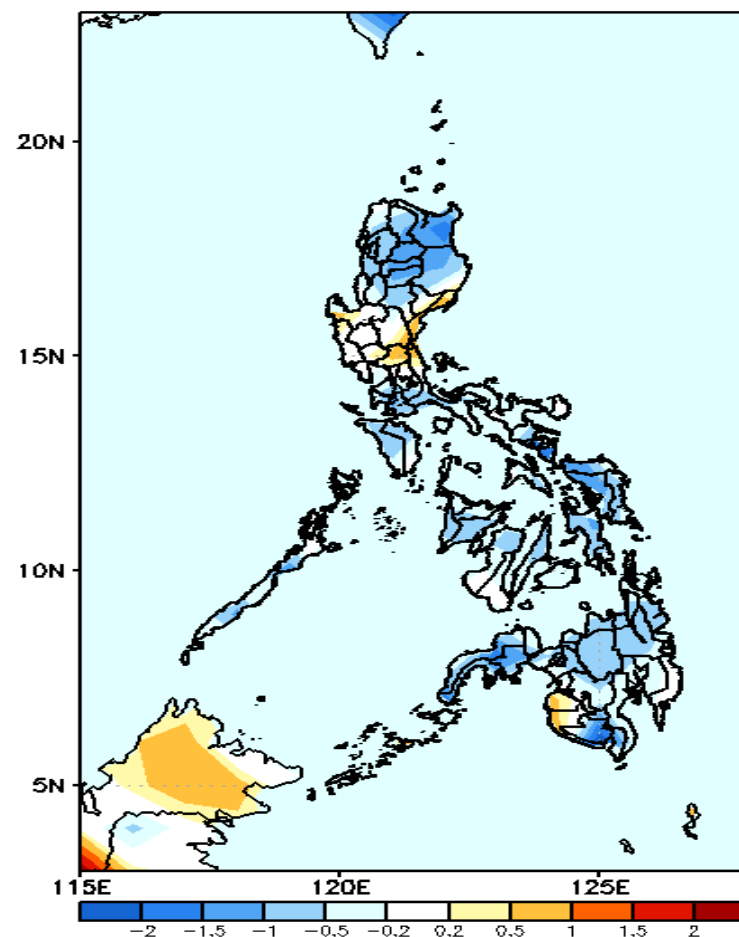
GEFS Week-1 T2m Anomaly  
Valid: 20210701 – 20210707



**2m Temperature Week 1: Jul 01-07, 2021**

Slightly cooler to cooler than average surface air temperature will likely experience in Cagayan, Cebu, Negros Island and southern half of Mindanao while average to slightly warmer than average temperature for the rest of the country during the forecast period.

GEFS Week-2 T2m Anomaly  
Valid: 20210708 – 20210714



**2m Temperature Week 2: July 08-14, 2021**

Slightly cooler to cooler than average surface air temperature will likely experience in most parts of the country except with some patches of average to slightly warmer than average temperature in Central Luzon, Maguindanao and Sultan Kudarat during the forecast period.