



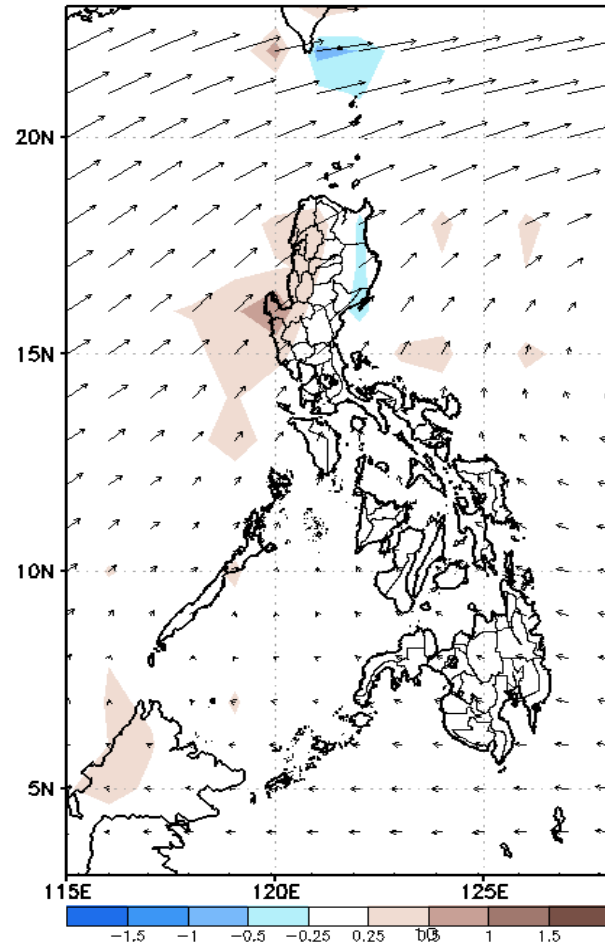
# Week 1 & Week 2 Forecast for the Philippines using GEFS Model



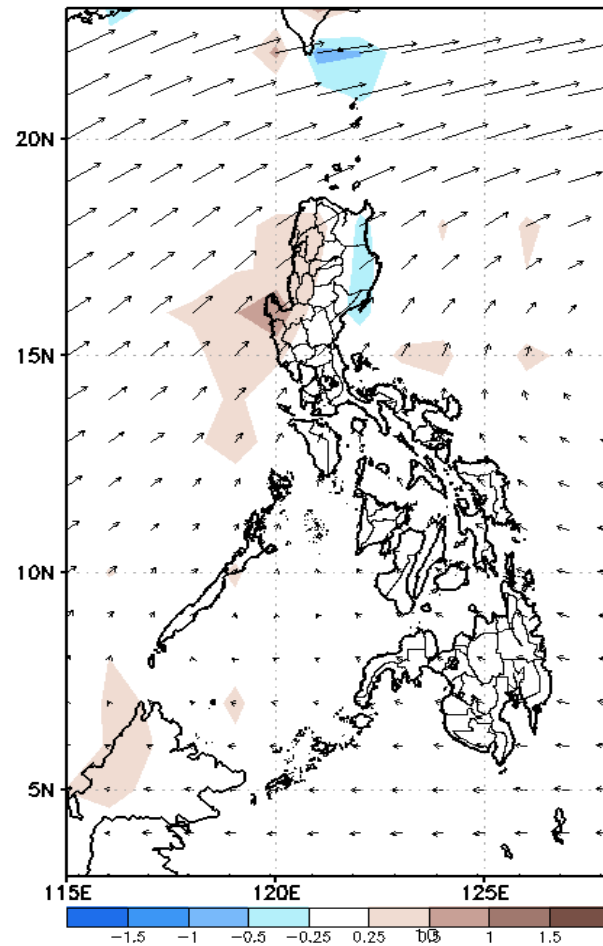
# GEFS Week-1 Forecasts: Wind Anomaly Forecast

Week 1: Jun 01-07, 2022

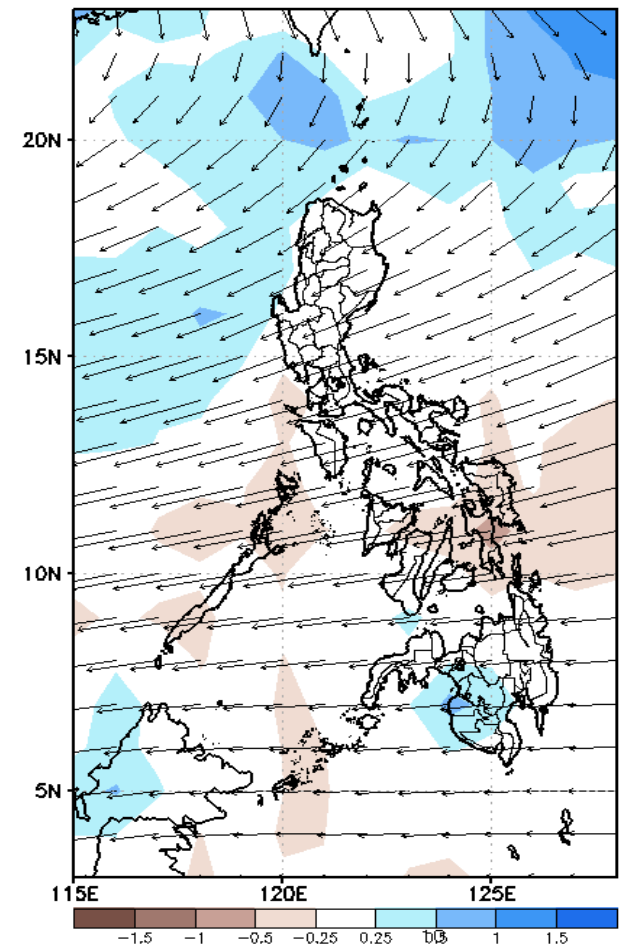
GEFS Week-1 850-hPa Divergence and Wind Anom  
Valid: 20220601 - 20220607



GEFS Week-1 700-hPa Divergence and Wind Anom  
Valid: 20220601 - 20220607



GEFS Week-1 200-hPa Divergence and Wind Anom  
Valid: 20220601 - 20220607

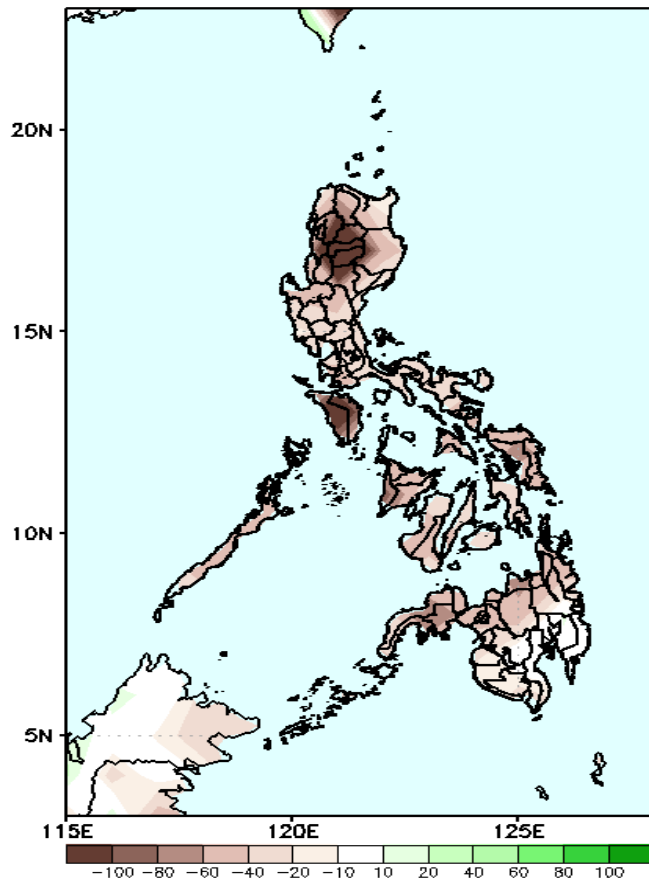


Southwest Monsoon is forecasted to affect the western sections of Luzon while Easterlies affecting the rest of the country during the forecast period

# Precipitation Anomaly and Exceedance Probability > 25/50 mm

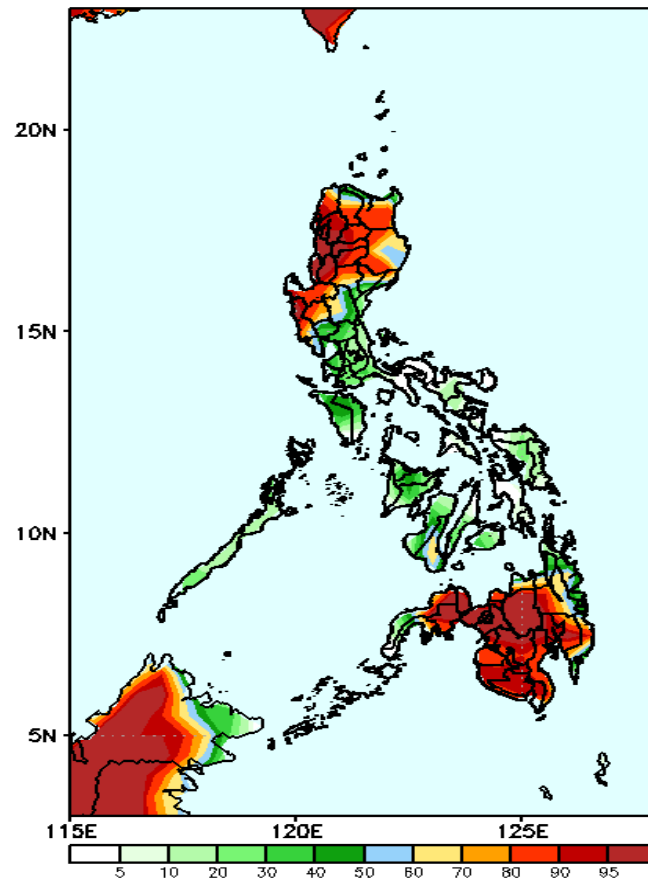
Week 1: Jun 01-07, 2022

GEFS Week-1 Precip. Anomaly  
Valid: 20220601 - 20220607



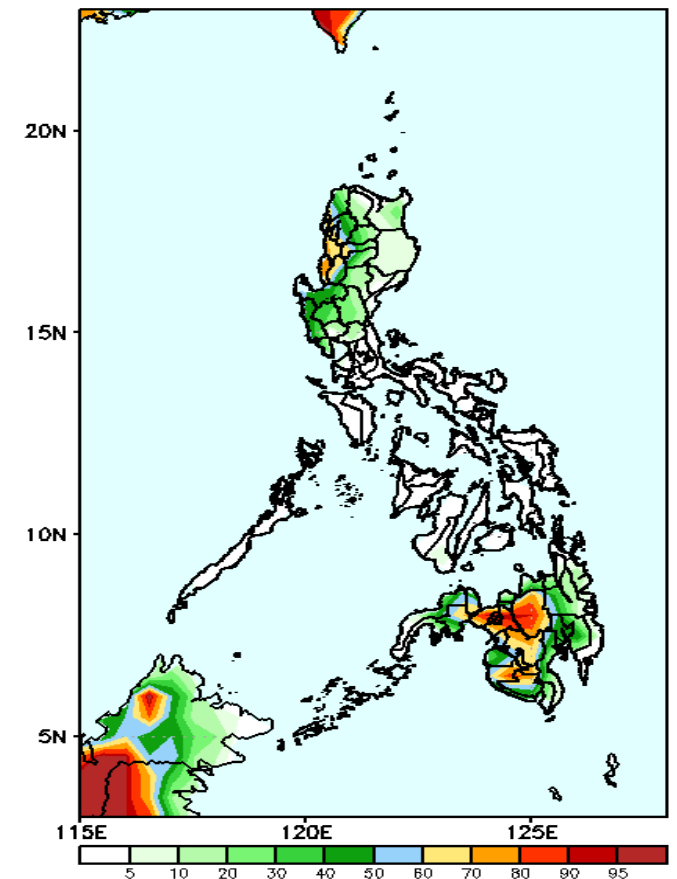
Rainfall deficit of more than 100mm is expected in Cordillera Region & Mindoro and 40-100mm for the rest of the country during the forecast period .

GEFS Week-1 Exceedance Prob. > 25mm  
Valid: 20220601 - 20220607



High probability of rainfall to exceed 25mm in most parts of Northern & Central Luzon, and most parts of Mindanao while less likely for the rest the country during the forecast period.

GEFS Week-1 Exceedance Prob. > 50mm  
Valid: 20220601 - 20220607

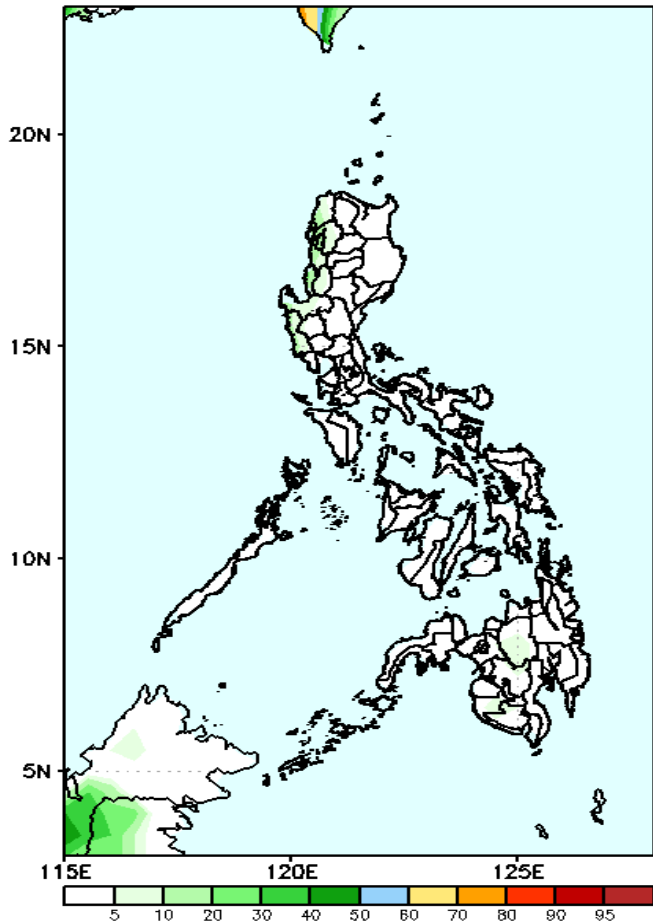


70-90% probability of rainfall to exceed 50mm in La Union, Ilocos Sur, Northern Mindanao, Lanao del Sur and most of SOCCSKSARGEN while less likely for the rest the country during the forecast period.

# Exceedance Probability > 100/150/200 mm

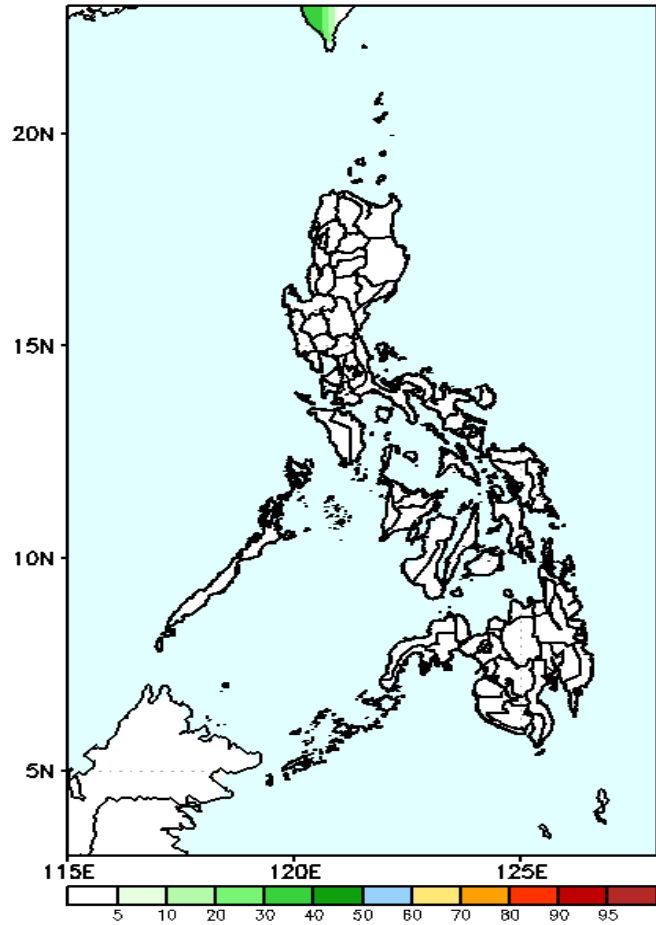
Week 1: Jun 01-07, 2022

GEFS Week-1 Exceedance Prob. > 100mm  
Valid: 20220601 – 20220607



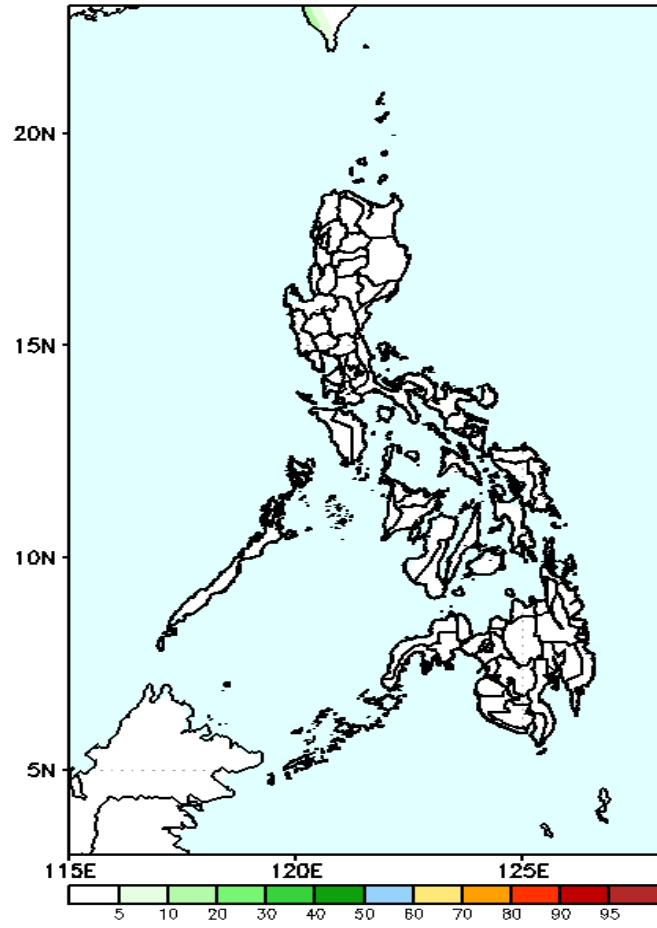
Low probability of rainfall to exceed 100mm in most parts of the country during the forecast period.

GEFS Week-1 Exceedance Prob. > 150mm  
Valid: 20220601 – 20220607

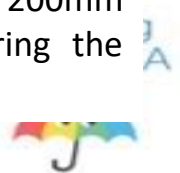


Low probability of rainfall to exceed 150mm in most parts of the country during the forecast period.

GEFS Week-1 Exceedance Prob. > 200mm  
Valid: 20220601 – 20220607



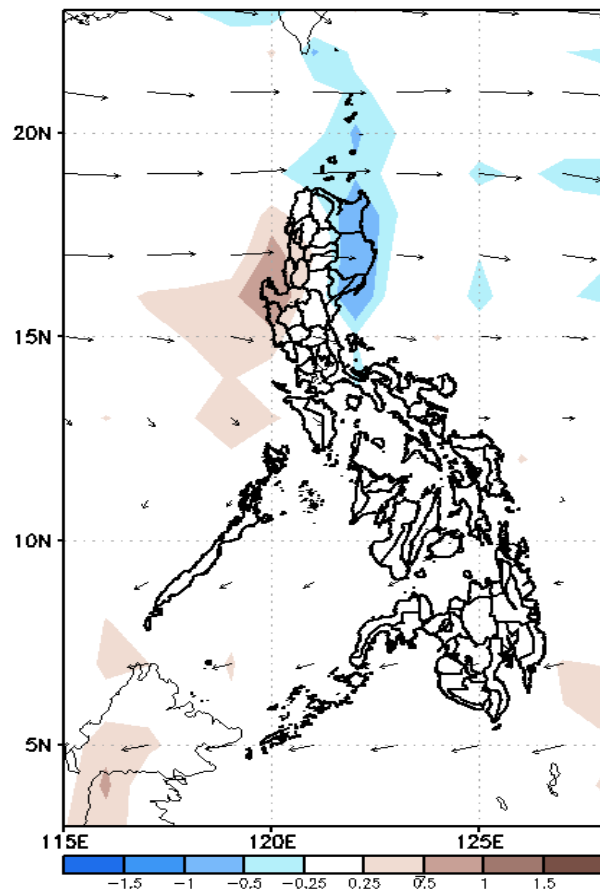
Low probability of rainfall to exceed 200mm in most parts of the country during the forecast period.



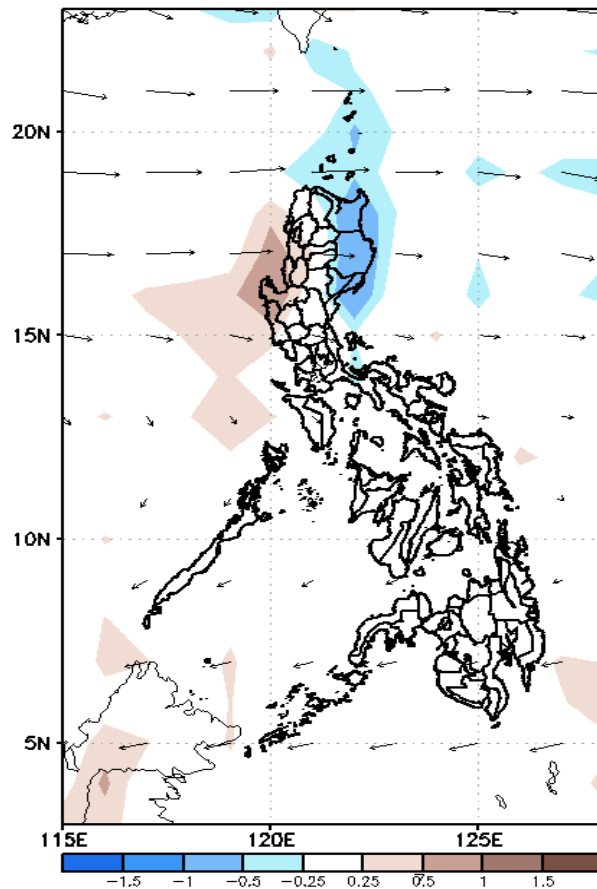
# GEFS Week-2 Forecasts: Wind Anomaly Forecast

Week 2: Jun 08-14, 2022

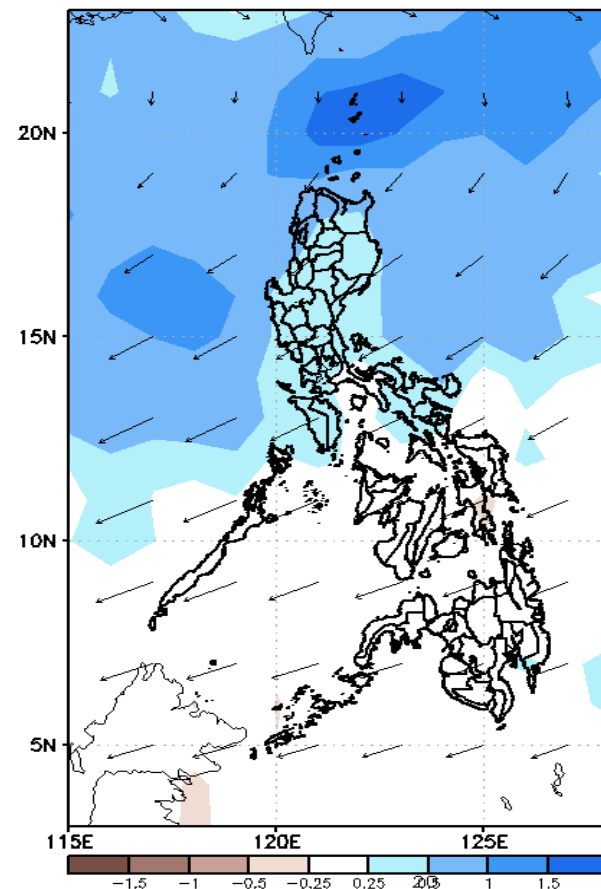
GEFS Week-2 850-hPa Divergence and Wind Anom.  
Valid: 20220608 - 20220614



GEFS Week-2 700-hPa Divergence and Wind Anom.  
Valid: 20220608 - 20220614



GEFS week-2 200-hPa Divergence and Wind Anom.  
Valid: 20220608 - 20220614

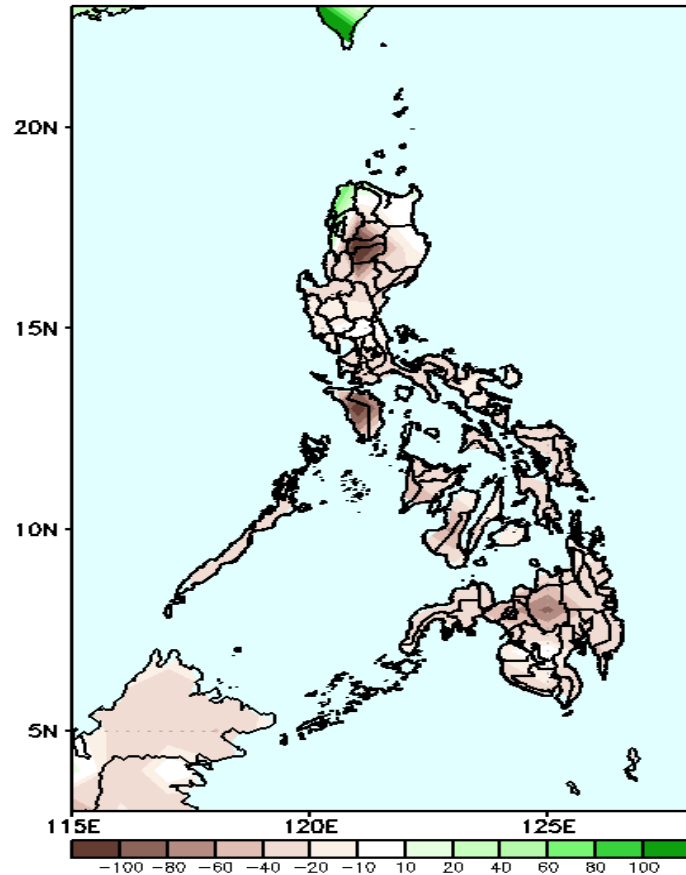


Southwest Monsoon is forecasted to affect most parts of Luzon while easterlies affecting Visayas and Mindanao during the forecast period.

# Precipitation Anomaly and Exceedance Probability > 25/50 mm

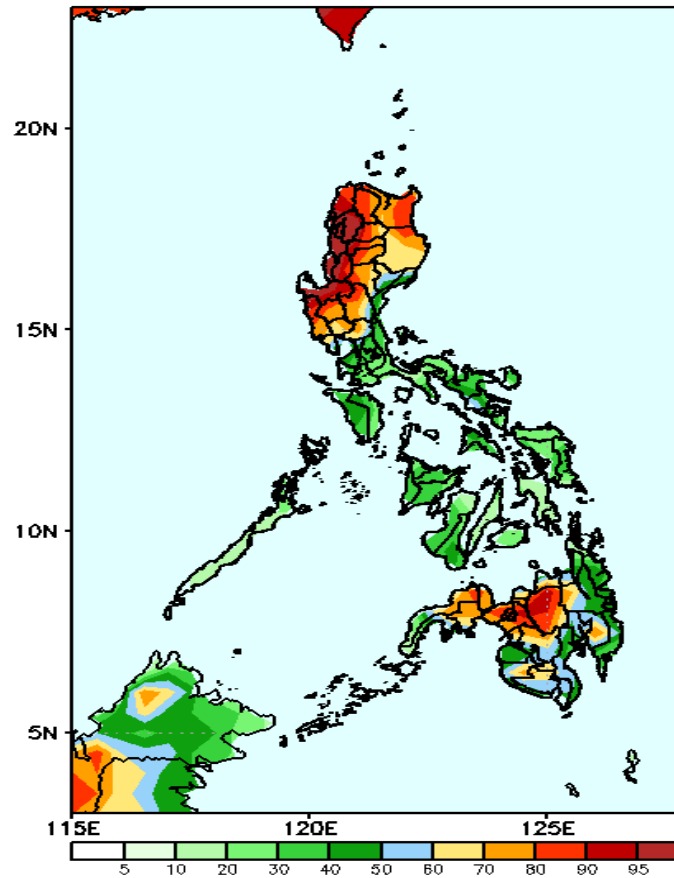
Week 2: Jun 08-14, 2022

GEFS Week-2 Precip Anomaly  
Valid: 20220608 - 20220614



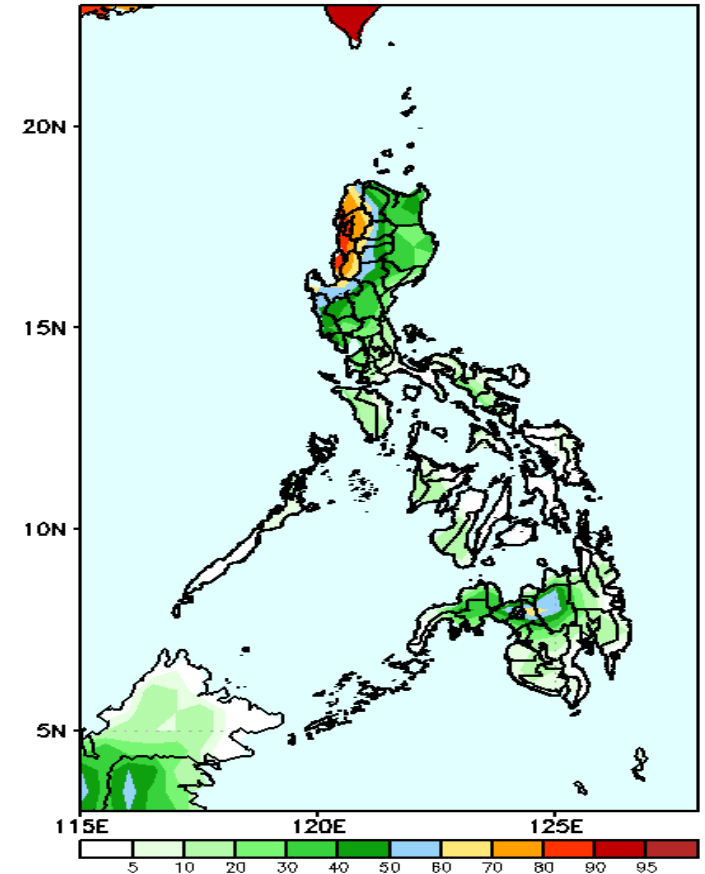
Rainfall deficit of 40-100mm is expected in most parts of the country during the forecast period.

GEFS Week-2 Exceedance Prob. > 25mm  
Valid: 20220608 - 20220614



High probability of rainfall to exceed 25mm in most parts of Northern & Central Luzon, Northern Mindanao and Zamboanga Peninsula while less likely for the rest of the country during the forecast period.

GEFS Week-2 Exceedance Prob. > 50mm  
Valid: 20220608 - 20220614



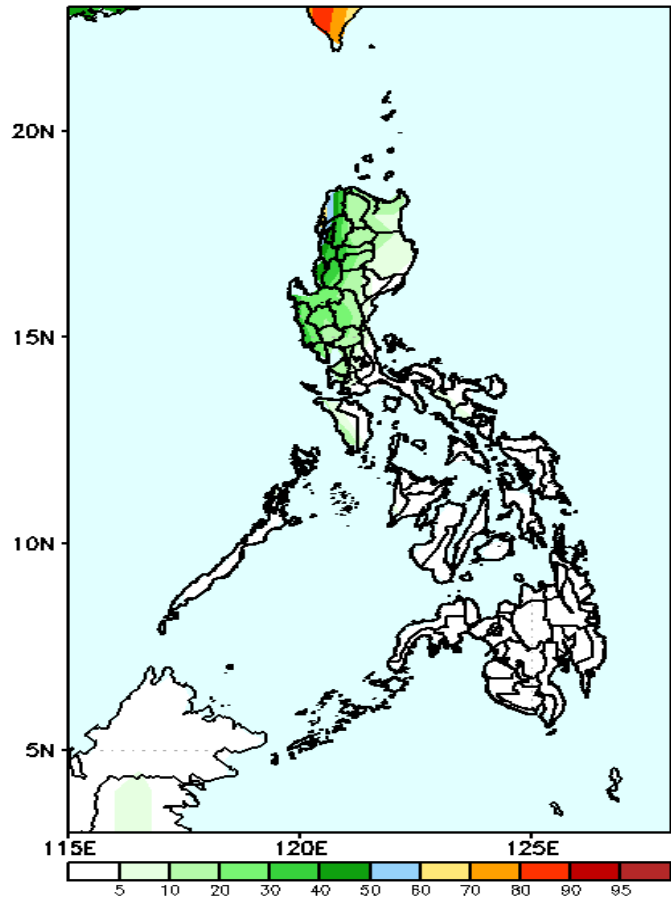
High probability of rainfall to exceed 50mm in most parts of Ilocos Region, Abra and Benguet while less likely for the rest of the country during the forecast period.



# Exceedance Probability > 100/150/200 mm

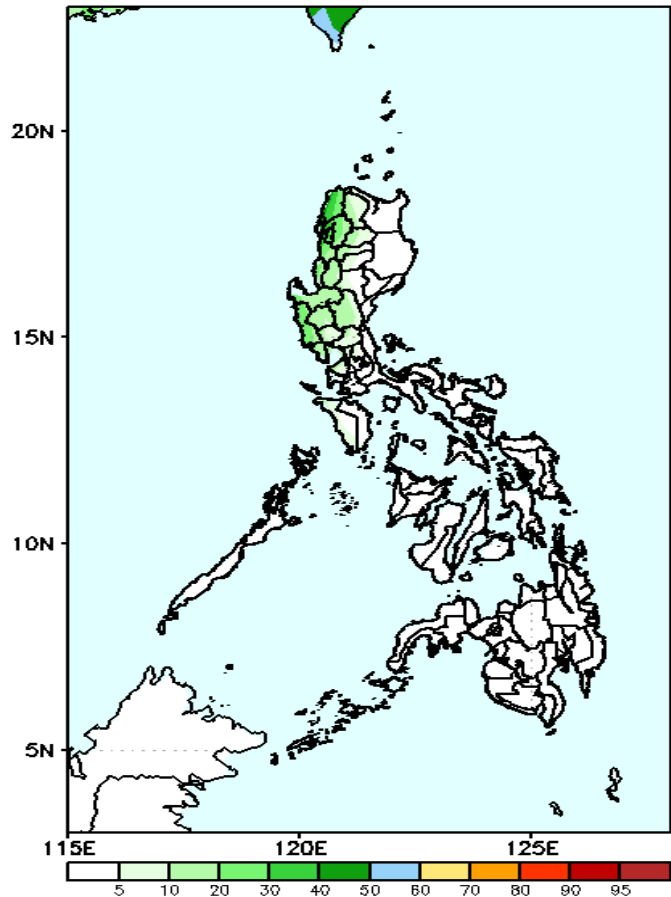
Week 2: Jun 08-14, 2022

GEFS Week-2 Exceedance Prob. > 100mm  
Valid: 20220608 – 20220614



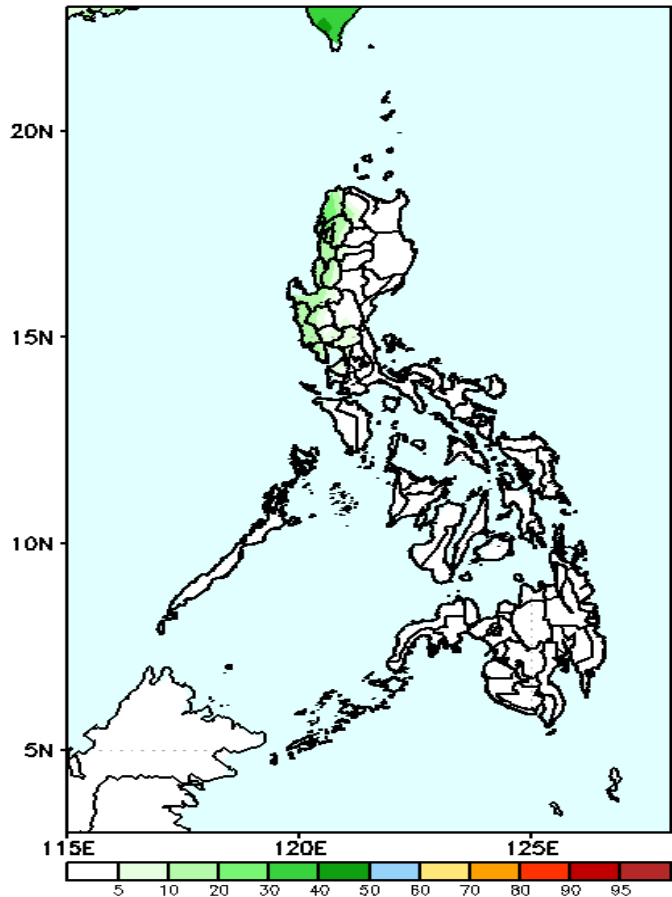
Low probability of rainfall to exceed 100mm in most parts of the country during the forecast period.

GEFS Week-2 Exceedance Prob. > 150mm  
Valid: 20220608 – 20220614



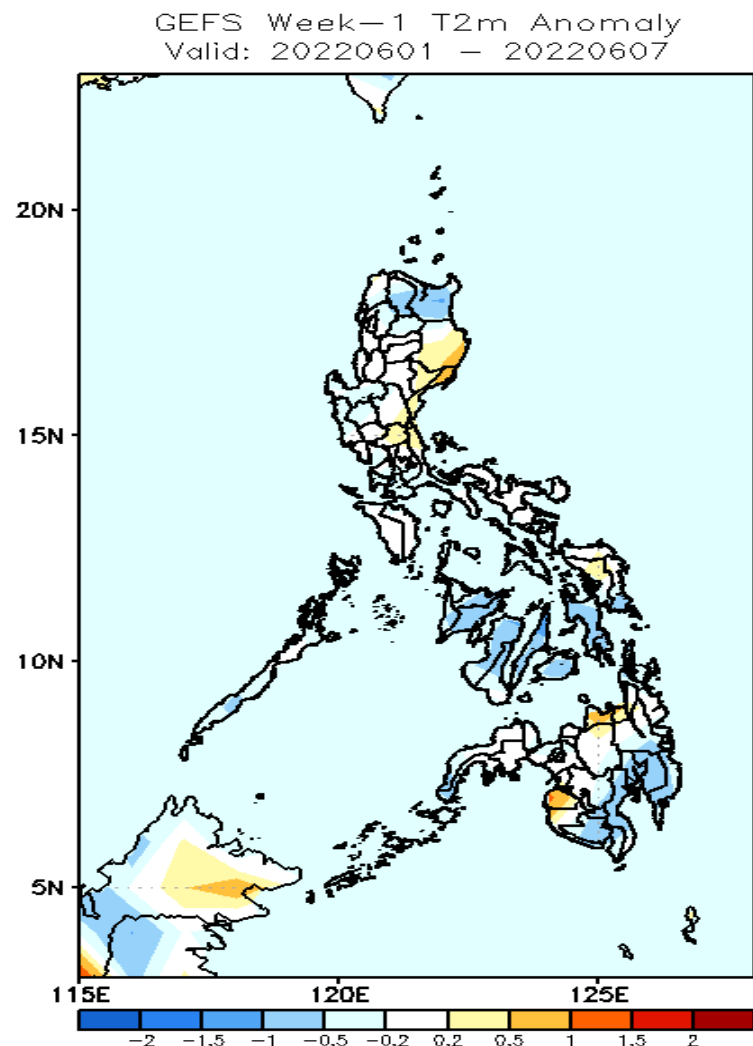
Low probability of rainfall to exceed 150mm in most parts of the country during the forecast period.

GEFS Week-2 Exceedance Prob. > 200mm  
Valid: 20220608 – 20220614



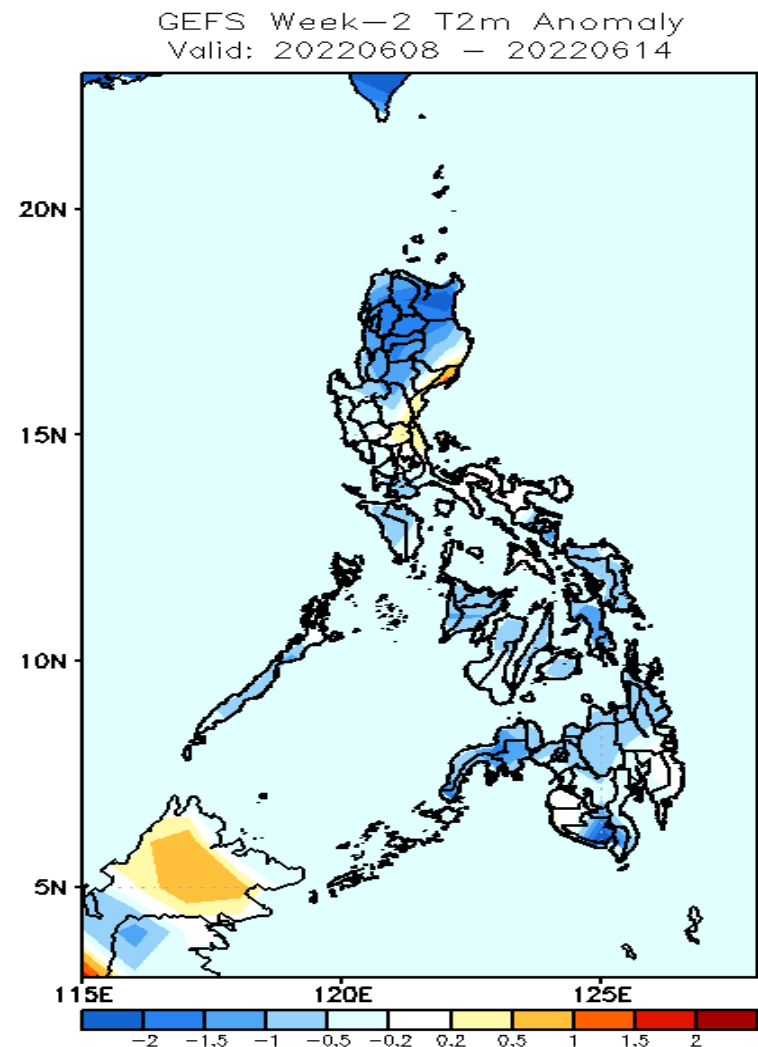
Low probability of rainfall to exceed 200mm in most parts of the country during the forecast period.

# GEFS Week-1 & 2 Forecasts: T2m Anomaly



## 2m Temperature Week 1: Jun 01-07, 2022

Average to slightly cooler surface air temperature will likely experience in most parts of the country except in Isabela, Quirino, Aurora, Nueva Ecija, Misamis Oriental and Maguindanao where slightly warmer temperature is expected during the forecast period.



## 2m Temperature Week 2: Jun 08-14, 2022

Cooler than average surface air temperature will likely experience in most parts of Luzon, Zamboanga Peninsula and South Cotabato while average to slightly cooler for the rest of the country during the forecast period.