



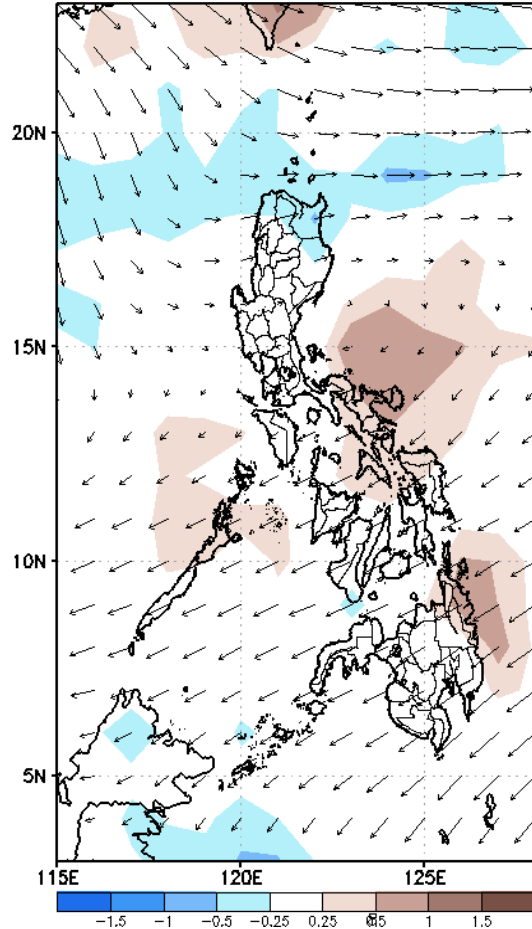
Week 1 & Week 2 Forecast for the Philippines using GEFS Model



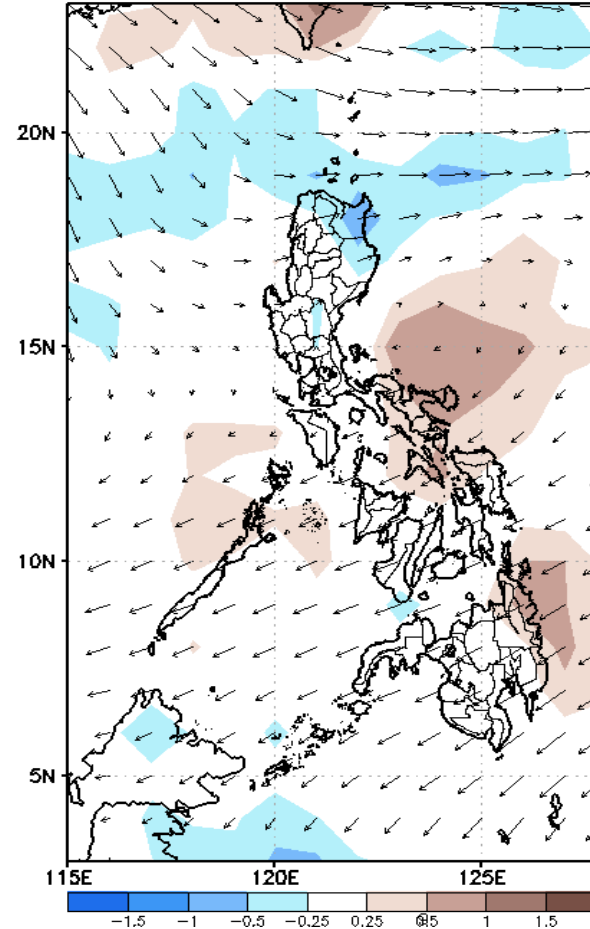
GEFS Week-1 Forecasts: Wind Anomaly Forecast

Week 1: Mar 01 – Mar 07, 2023

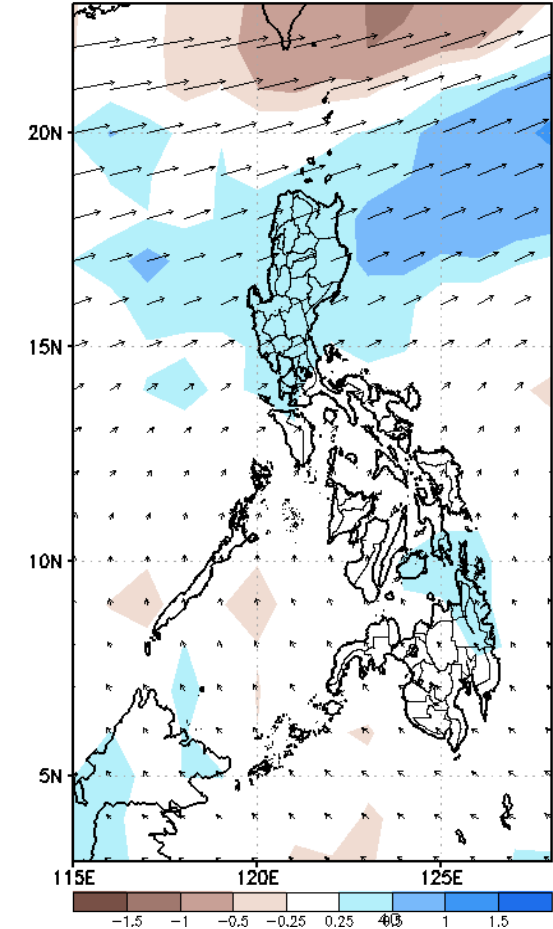
GEFS Week-1 850-hPa Divergence and Wind Anomaly
Valid: 20230301 – 20230307



GEFS Week-1 700-hPa Divergence and Wind Anomaly
Valid: 20230301 – 20230307



GEFS Week-1 200-hPa Divergence and Wind Anomaly
Valid: 20230301 – 20230307

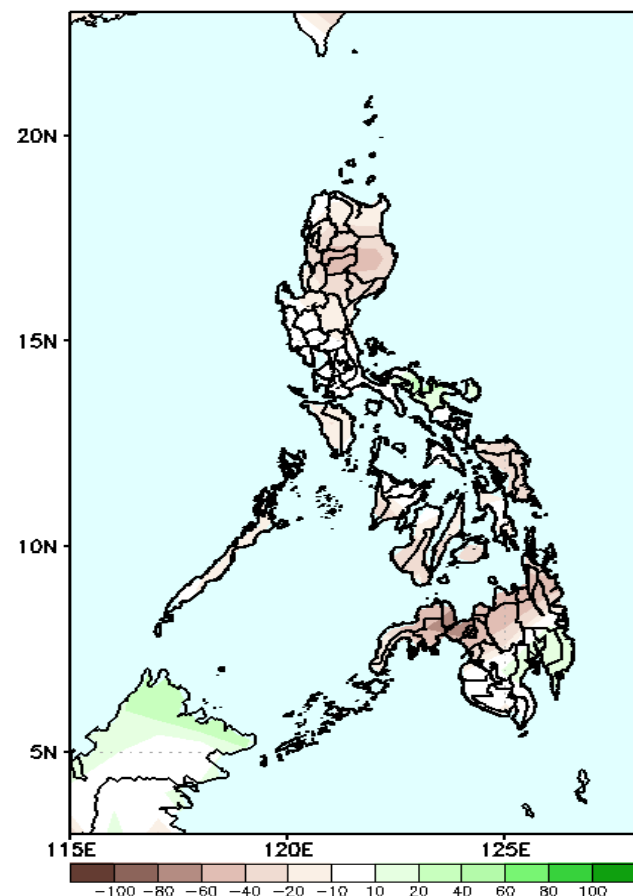


Northeast monsoon is forecasted to affect the eastern section of Northern and Central Luzon while easterlies affecting the rest of the country during the forecast period.

Precipitation Anomaly and Exceedance Probability > 25/50 mm

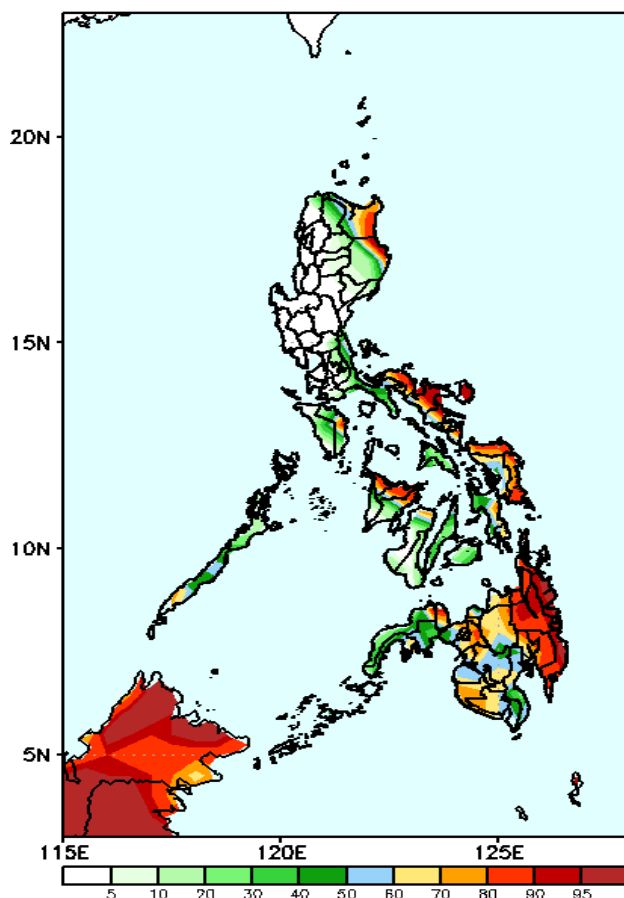
Week 1: Mar 01 - Mar 07, 2023

GEFS Week-1 Precip Anomaly
Valid: 20230301 - 20230307



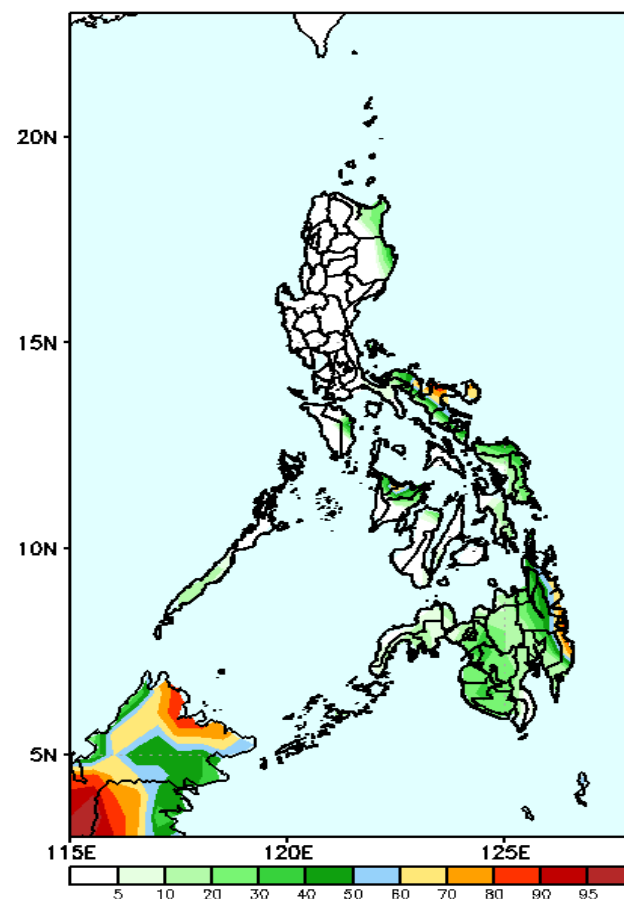
Rainfall deficit of 20-60mm is expected in most parts of the country during the forecast period.

GEFS Week-1 Exceedance Prob. > 25mm
Valid: 20230301 - 20230307



High to very high probability of rainfall to exceed 25mm in the eastern section of Cagayan and Isabela, most parts of Bicol region, Eastern Visayas, northern part of Western Visayas and most parts of Mindanao except most parts of Zamboanga peninsula while less likely for the rest of the country during the forecast period.

GEFS Week-1 Exceedance Prob. > 50mm
Valid: 20230301 - 20230307

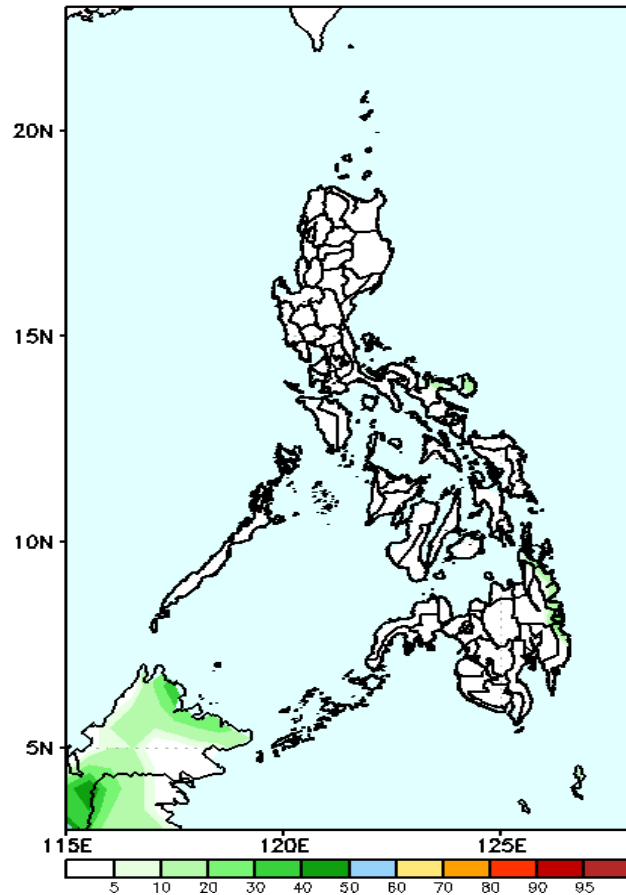


High probability of rainfall to exceed 50mm in some parts of Bicol Region and eastern Mindanao while less likely for the rest of the country during the forecast period.

Exceedance Probability > 100/150/200 mm

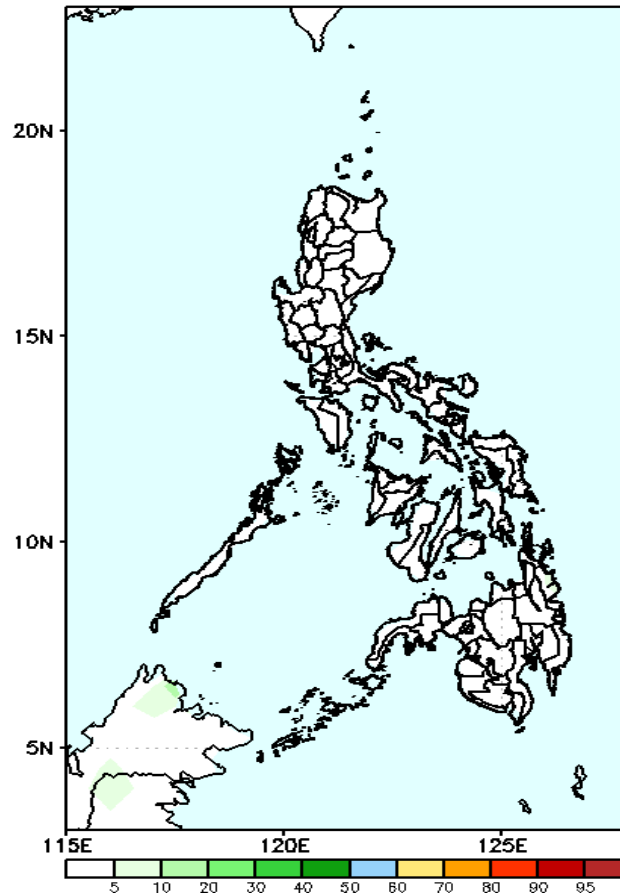
Week 1: Mar 01 - Mar 07, 2023

GEFS Week-1 Exceedance Prob. > 100mm
Valid: 20230301 - 20230307



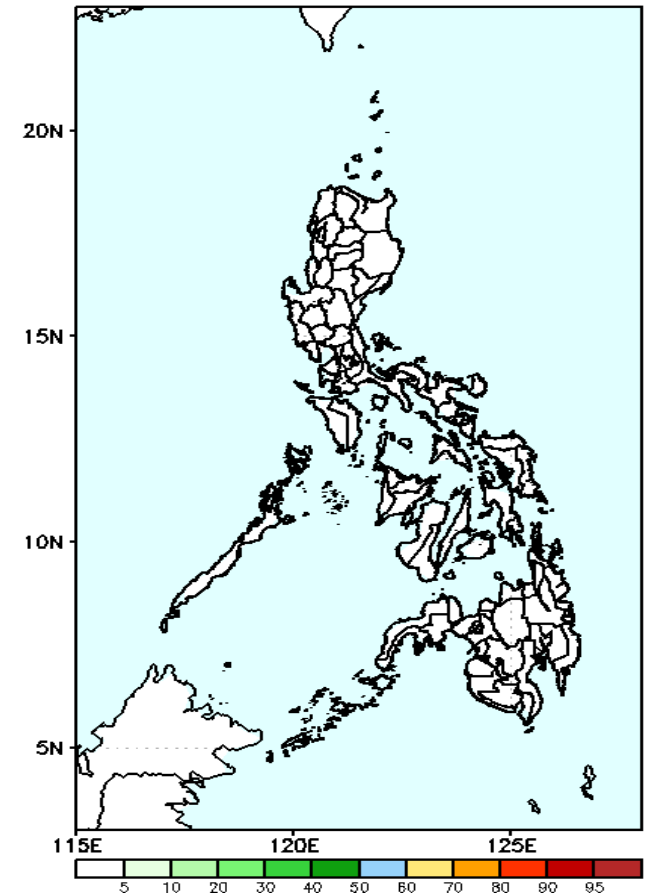
Low probability of rainfall to exceed 100mm in most parts of the country during the forecast period.

GEFS Week-1 Exceedance Prob. > 150mm
Valid: 20230301 - 20230307



Low probability of rainfall to exceed 150mm in most parts of the country during the forecast period.

GEFS Week-1 Exceedance Prob. > 200mm
Valid: 20230301 - 20230307

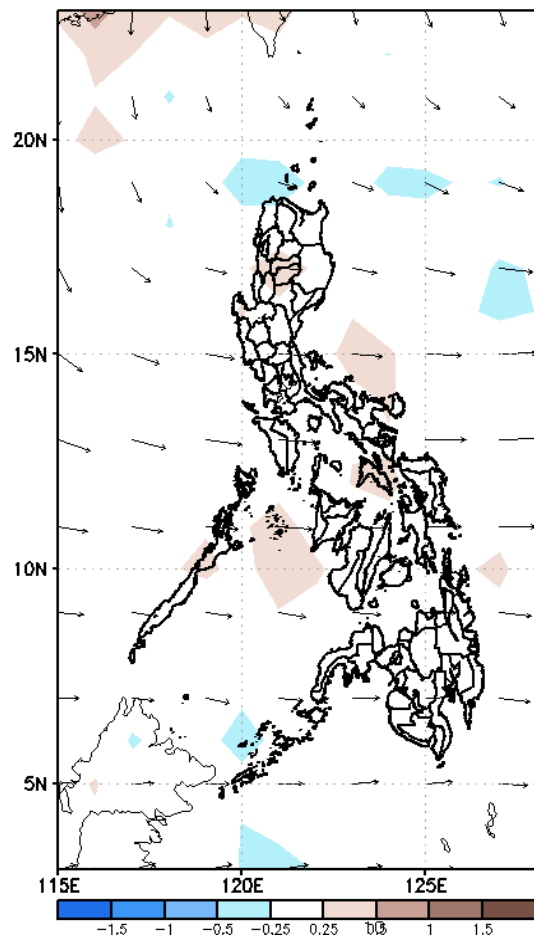


Low probability of rainfall to exceed 200mm in most parts of the country during the forecast period.

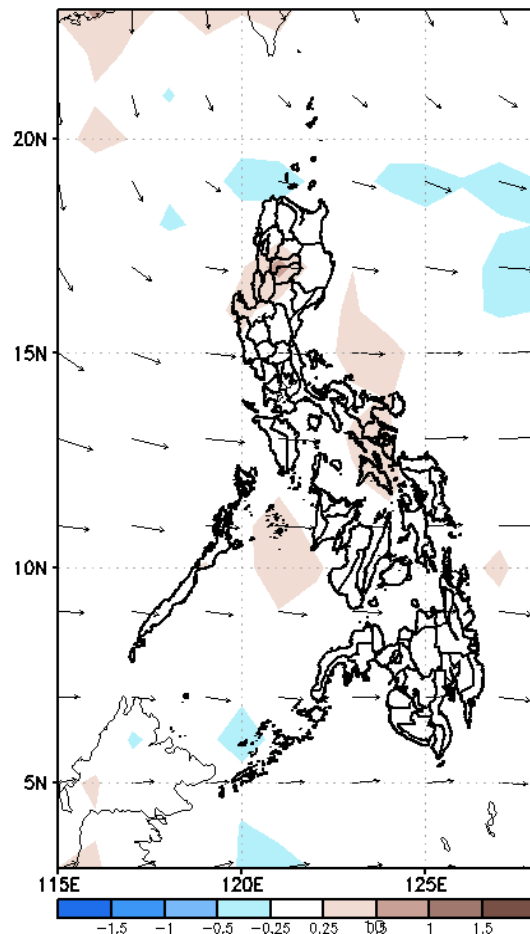
GEFS Week-2 Forecasts: Wind Anomaly Forecast

Week 2: Mar 08-14, 2023

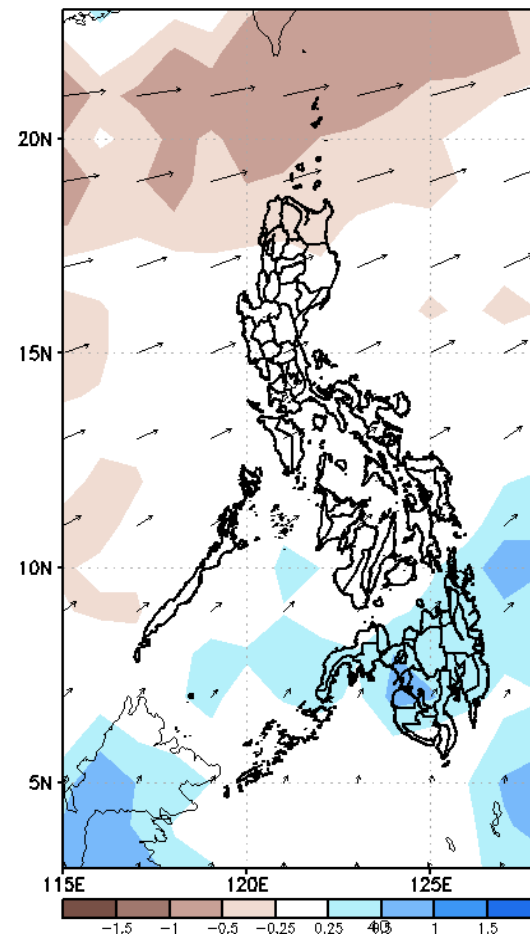
GEFS Week-2 850-hPa Divergence and Wind Anomaly
Valid: 20230308 – 20230314



GEFS Week-2 700-hPa Divergence and Wind Anomaly
Valid: 20230308 – 20230314



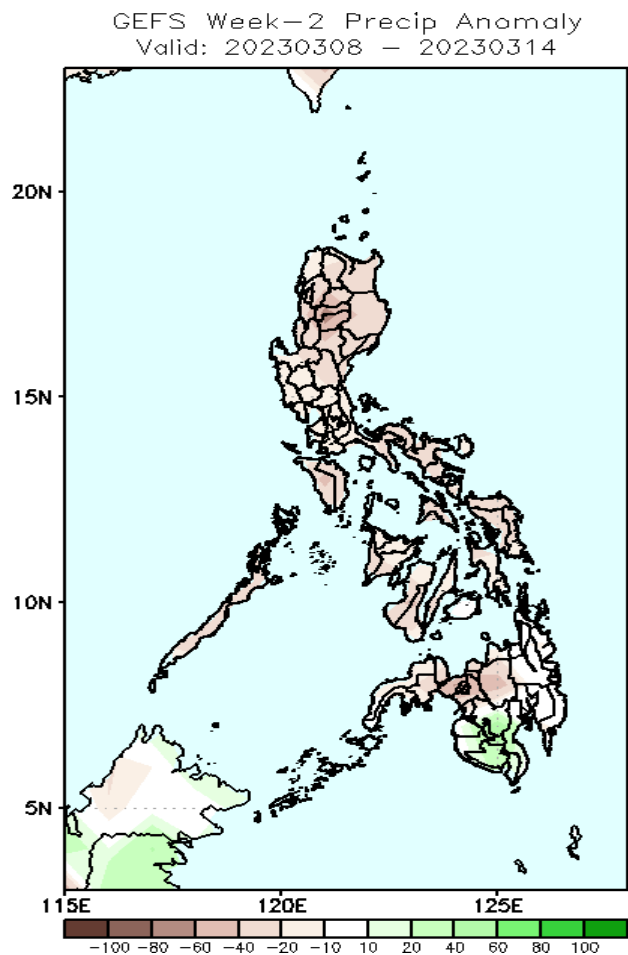
GEFS week-2 200-hPa Divergence and Wind Anomaly
Valid: 20230308 – 20230314



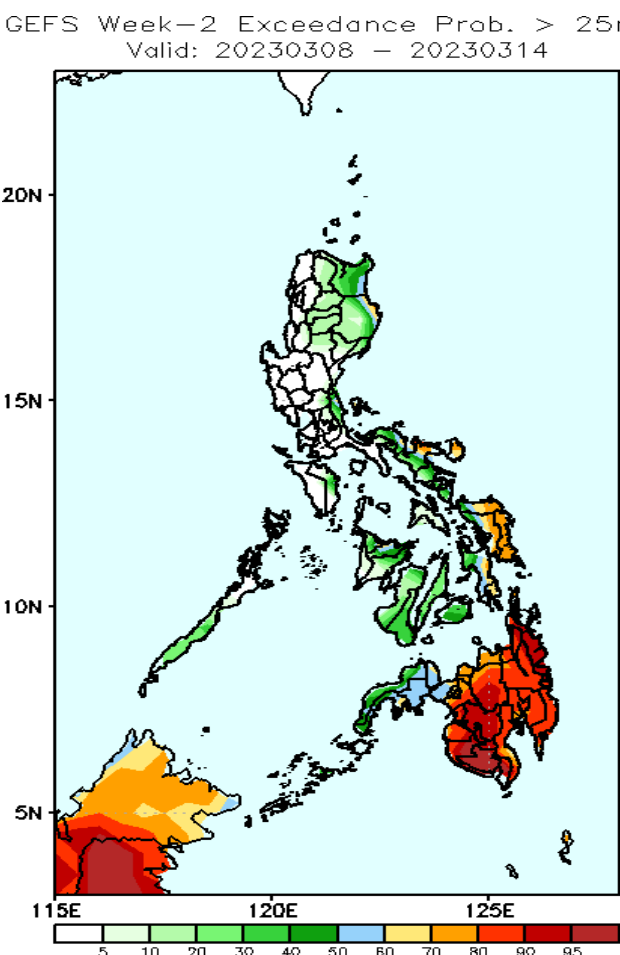
Easterlies is forecasted to affect most parts of the country during the forecast period.

Precipitation Anomaly and Exceedance Probability > 25/50 mm

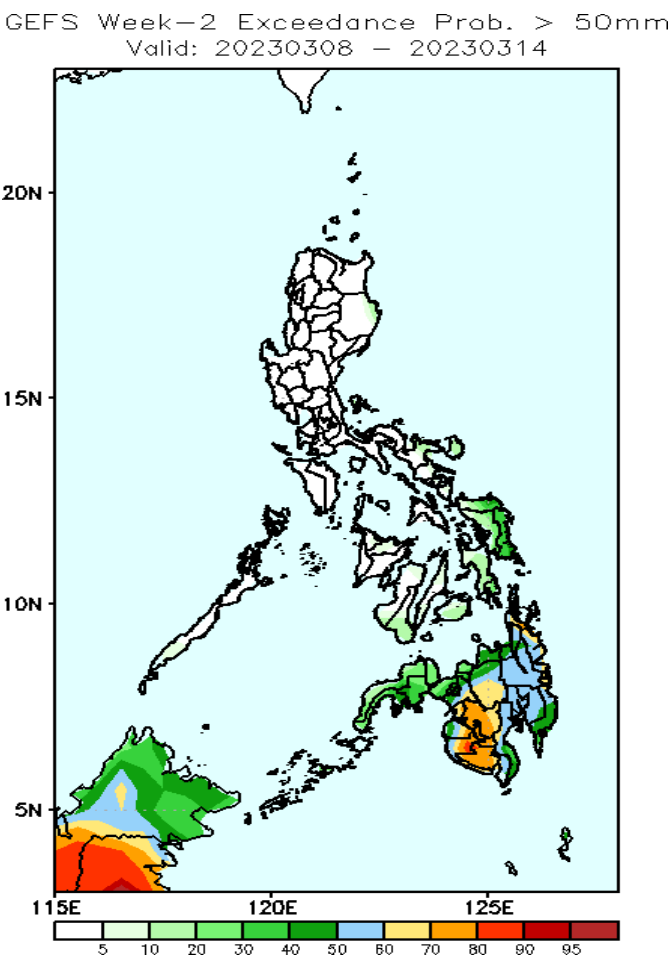
Week 2: Mar 08-14, 2023



Rainfall deficit of 20-60mm is expected in most parts of the country except in southwestern Mindanao where 20-40mm increase of rainfall will be likely during the forecast period.



High to very high probability of rainfall to exceed 25mm in most parts of Mindanao, 60-80% probability in some parts of Bicol region and Eastern Visayas while less likely for the rest of the country during the forecast period.

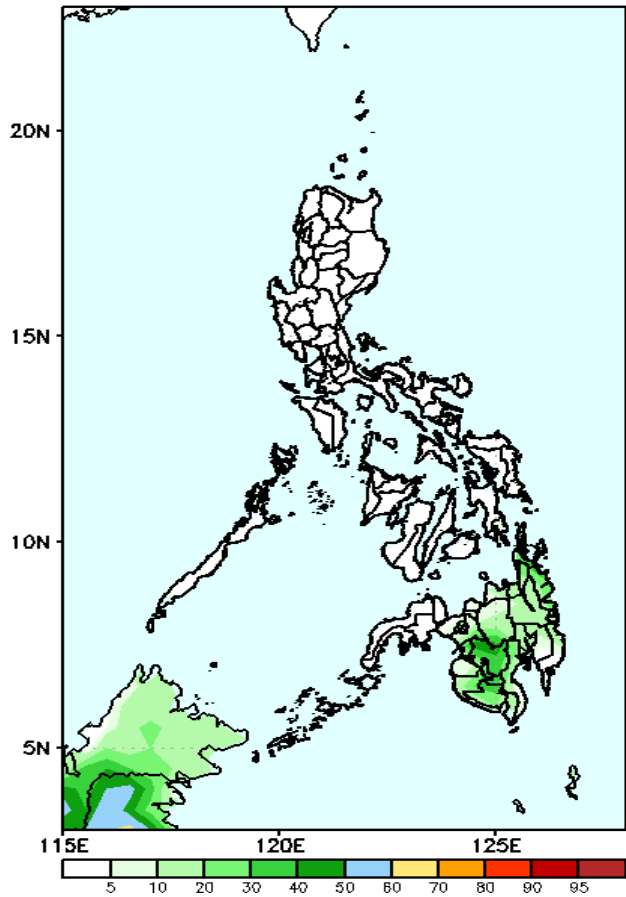


High probability of rainfall to exceed 50mm in some parts of Mindanao while less likely for the rest of the country during the forecast period.

Exceedance Probability > 100/150/200 mm

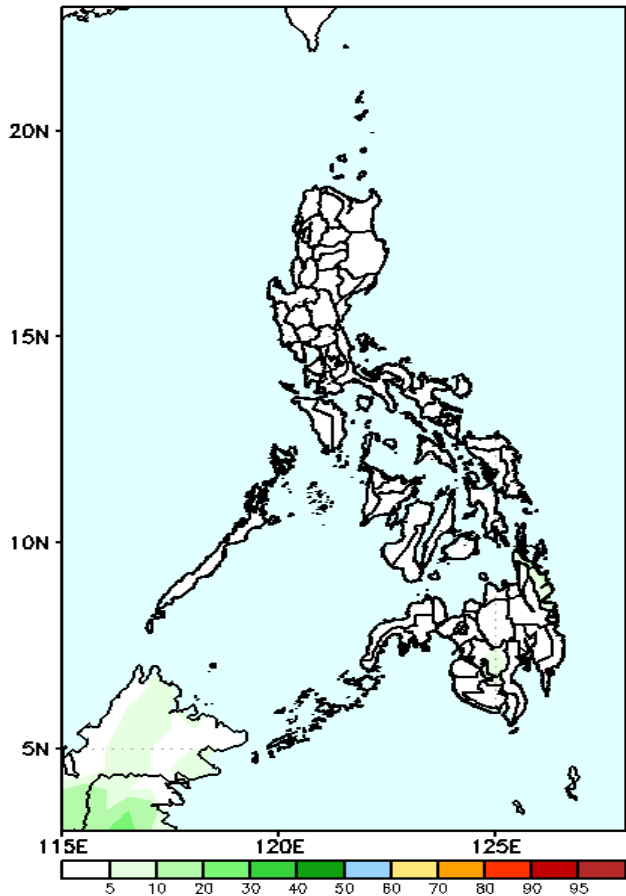
Week 2: Mar 08-14, 2023

GEFS Week-2 Exceedance Prob. > 100mm
Valid: 20230308 – 20230314



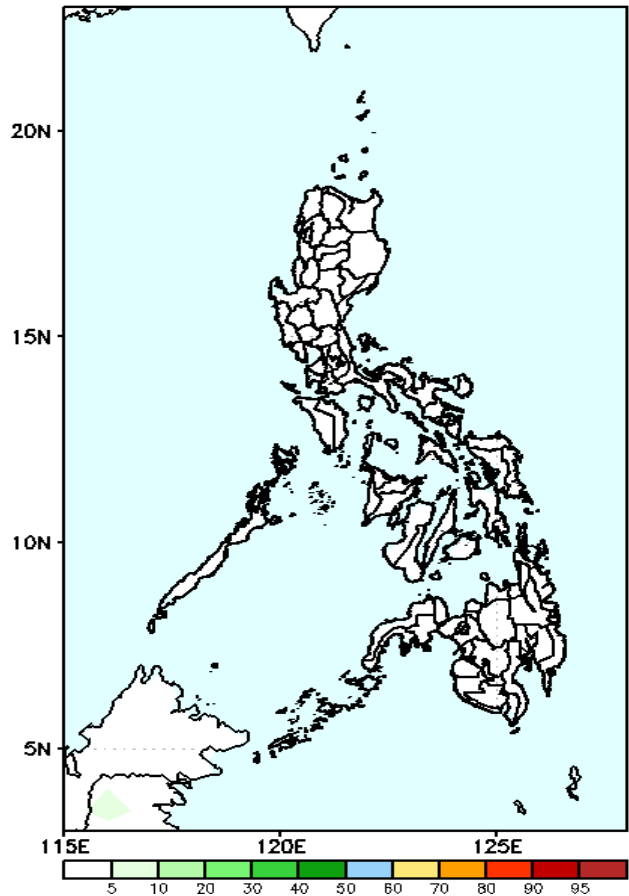
Low probability of rainfall to exceed 100mm in most parts of the country during the forecast period.

GEFS Week-2 Exceedance Prob. > 150mm
Valid: 20230308 – 20230314



Low probability of rainfall to exceed 150mm in most parts of the country during the forecast period.

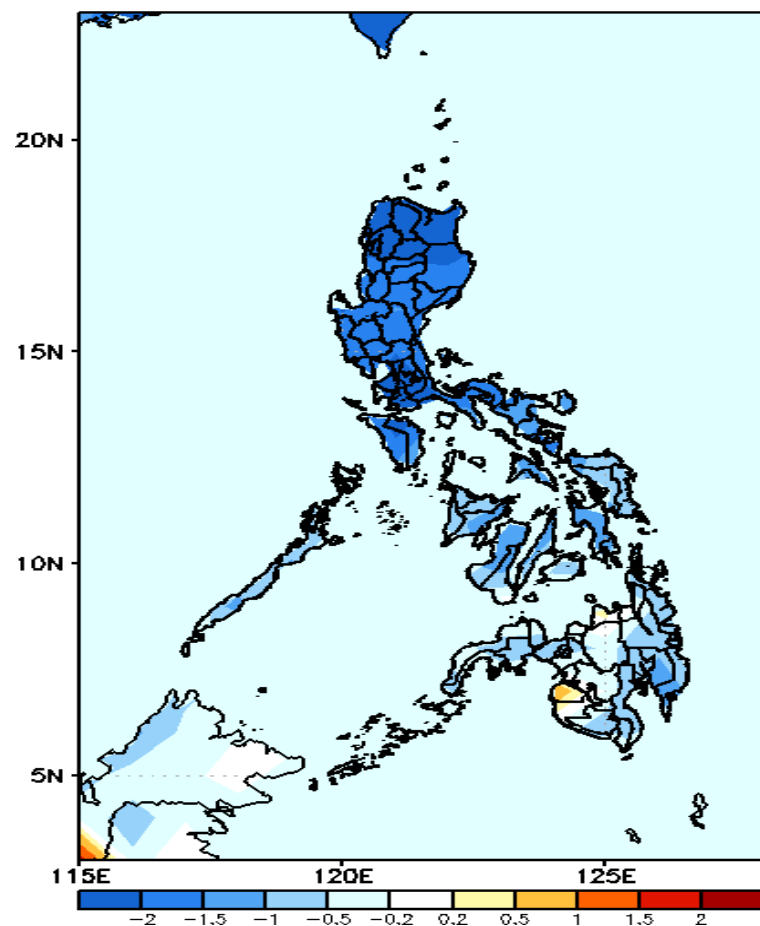
GEFS Week-2 Exceedance Prob. > 200mm
Valid: 20230308 – 20230314



Low probability of rainfall to exceed 200mm in most parts of the country during the forecast period.

GEFS Week-1 & 2 Forecasts: T2m Anomaly

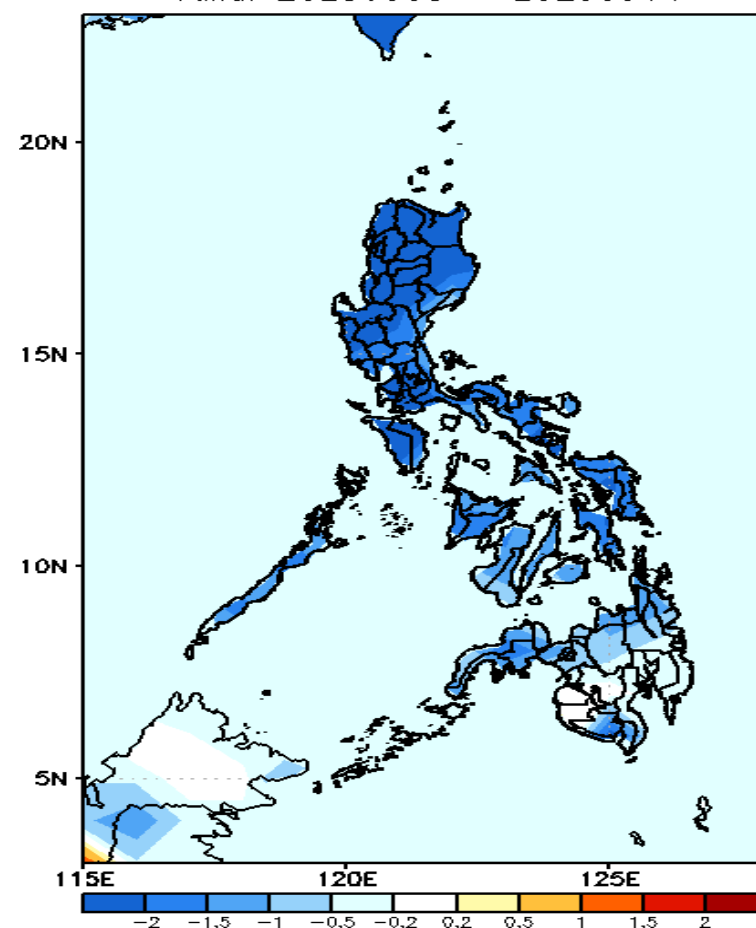
GEFS Week-1 T2m Anomaly
Valid: 20230301 – 20230307



2m Temperature Week 1: Mar 01-07, 2023

Cooler than average surface air temperature will likely experience in most parts of the country except Maguidanao where slightly warmer temperature will be likely during the forecast period.

GEFS Week-2 T2m Anomaly
Valid: 20230308 – 20230314



2m Temperature Week 2: Mar 08-14, 2023

Cooler than average surface air temperature will likely experience in most parts of the country during the forecast period.