



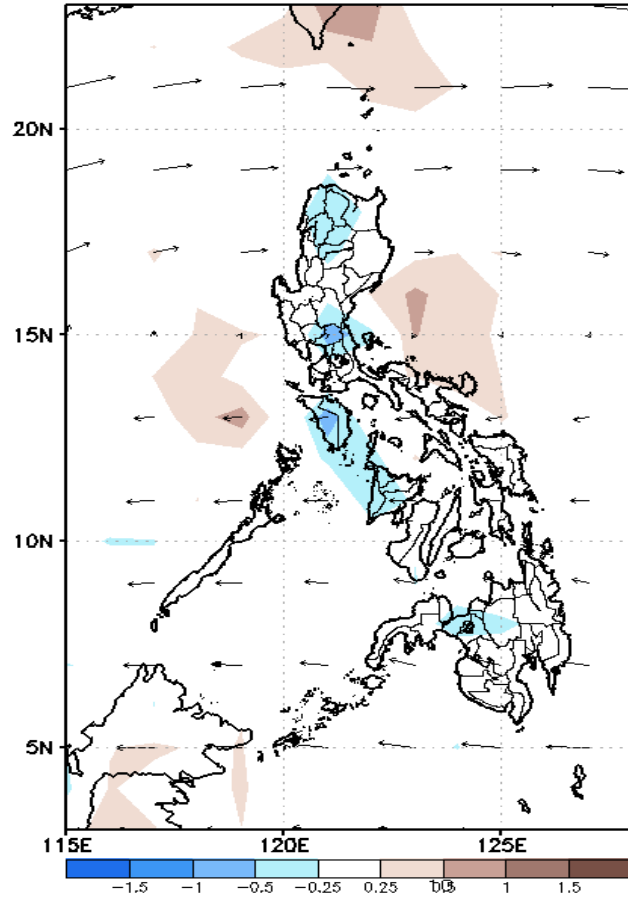
Week 1 & Week 2 Forecast for the Philippines using GEFS Model



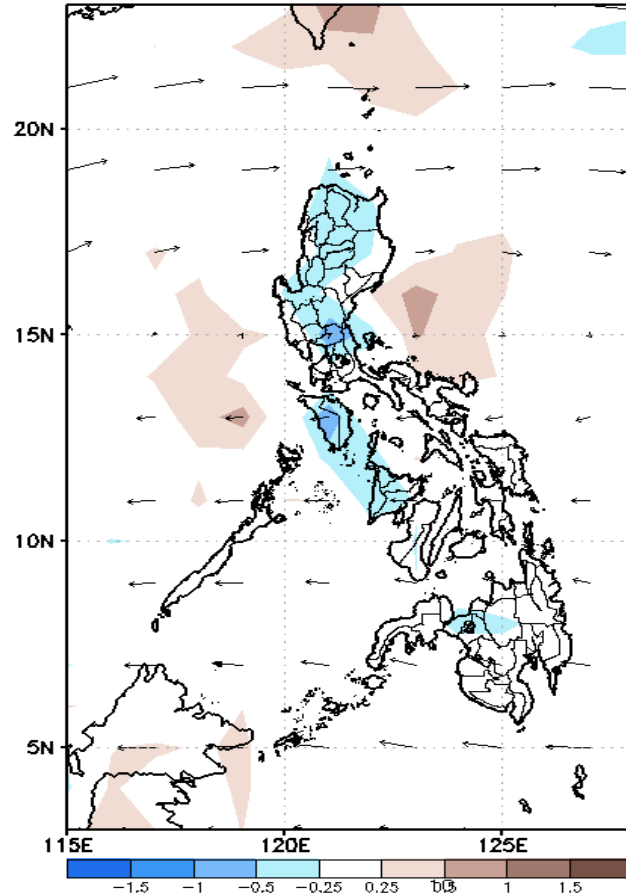
GEFS Week-1 Forecasts: Divergence & Wind Anomaly

Week 1: Nov 01-07, 2021

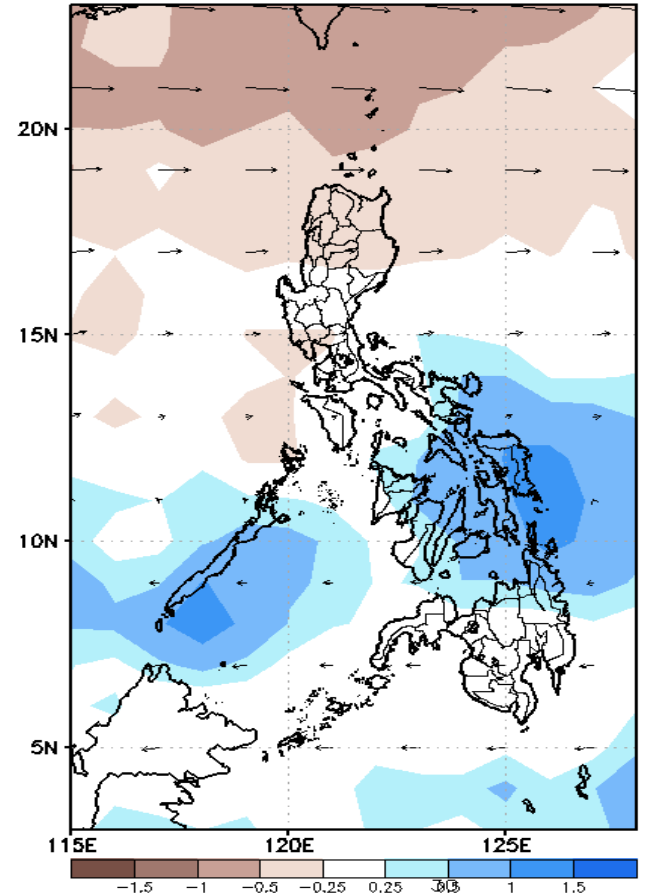
GEFS Week-1 850-hPa Divergence and Wind Anom
Valid: 20211101 - 20211107



GEFS Week-1 700-hPa Divergence and Wind Anom
Valid: 20211101 - 20211107



GEFS Week-1 200-hPa Divergence and Wind Anom
Valid: 20211101 - 20211107

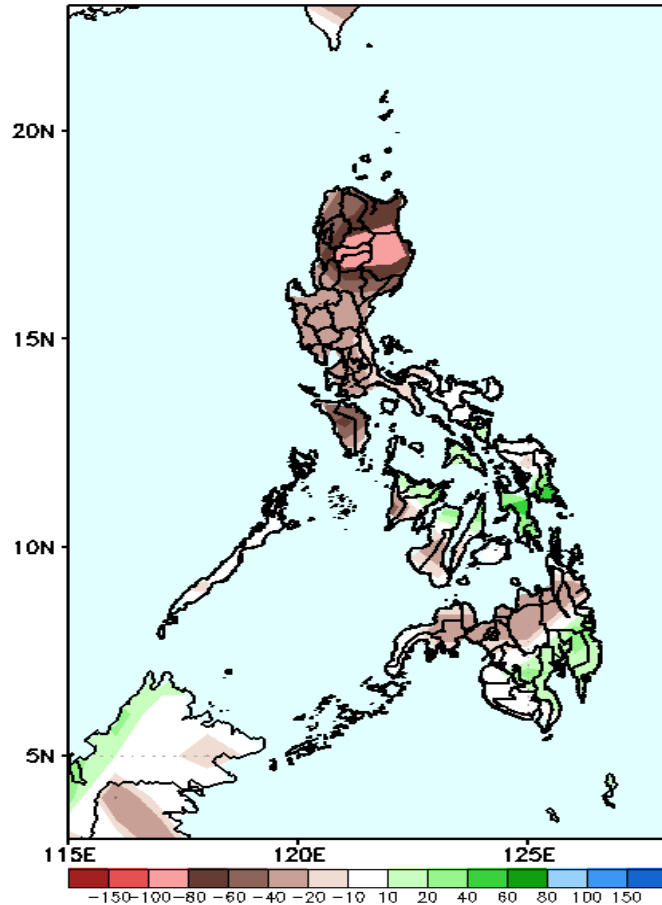


Upper and low level Divergence suggest likelihood of light precipitation in most parts of Bicol region, Palawan, most parts of Visayas, CARAGA and Misamis Oriental. Northeast Monsoon affecting the eastern sections of the country during the forecast period.

Precipitation Anomaly and Exceedance Probability > 25/50 mm

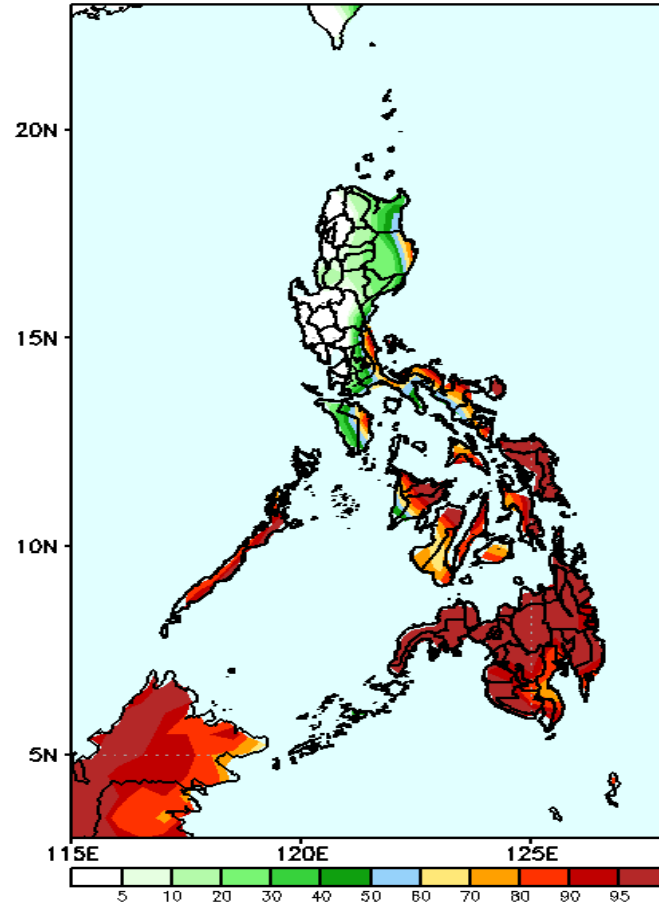
Week 1: Nov 01-07, 2021

GEFS Week-1 Precip Anomaly
Valid: 20211101 - 20211107



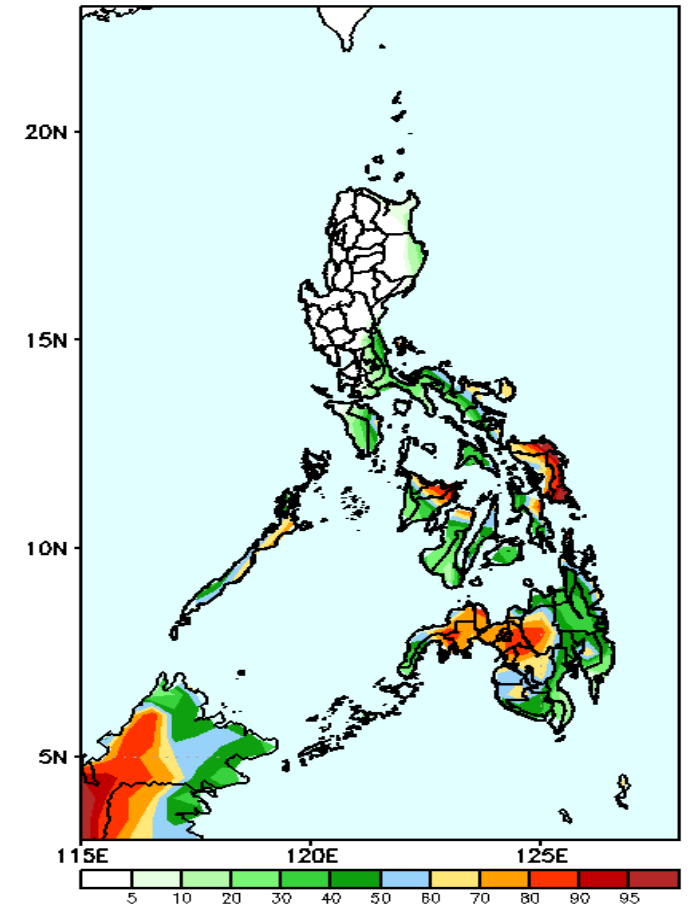
Rainfall deficit of 20-80mm in most parts of Luzon, western Visayas and Northern Mindanao (up to 100mm in Cordillera Region & Isabela) while increase of rainfall of 20-40mm in southeastern parts of Visayas and southern Mindanao during the forecast period.

GEFS Week-1 Exceedance Prob. > 25mm
Valid: 20211101 - 20211107



High probability of rainfall to exceed 25mm in eastern Isabela, Rizal, Oriental Mindoro, Palawan and most parts of Bicol Region, Visayas and Mindanao during the forecast period.

GEFS Week-1 Exceedance Prob. > 50mm
Valid: 20211101 - 20211107

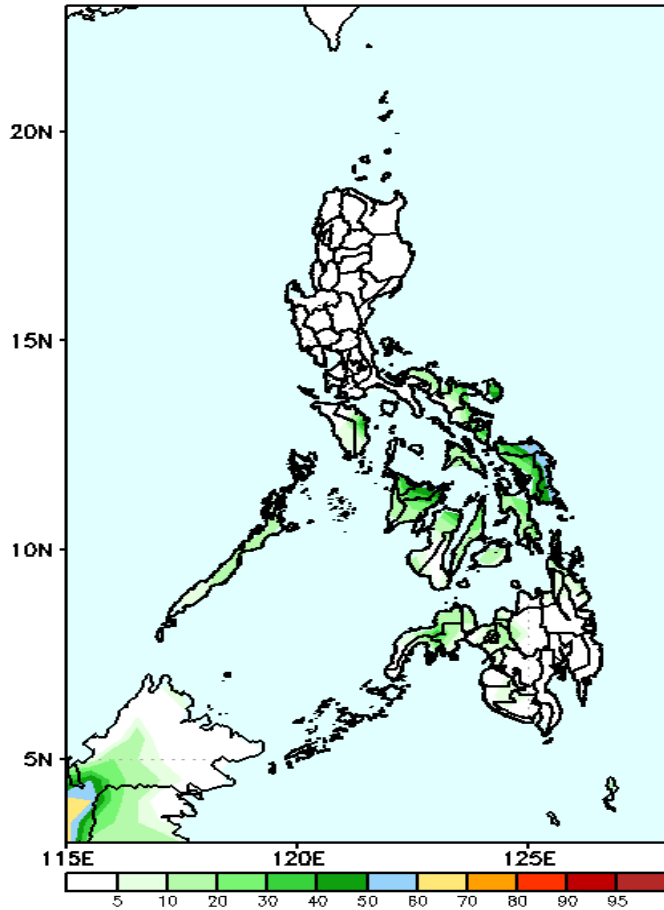


High probability of rainfall to exceed 50mm in Eastern Visayas, Capiz, Northern Mindanao, Lanao del Sur and Zamboanga del Sur & Norte while less likely for the rest of the country during the forecast period.

Exceedance Probability > 100/150/200 mm

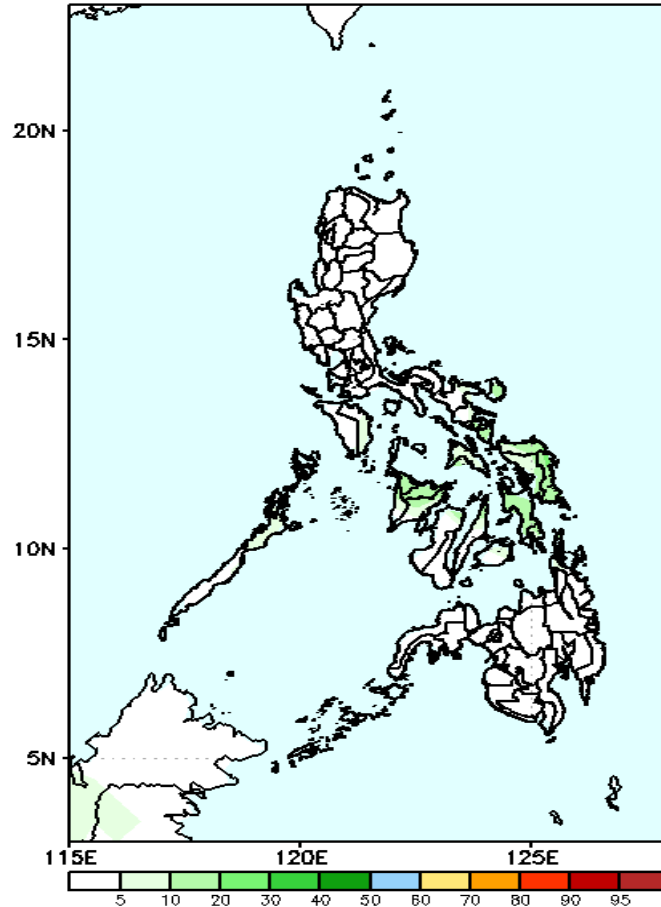
Week 1: Nov 01-07, 2021

GEFS Week-1 Exceedance Prob. > 100mm
Valid: 20211101 - 20211107



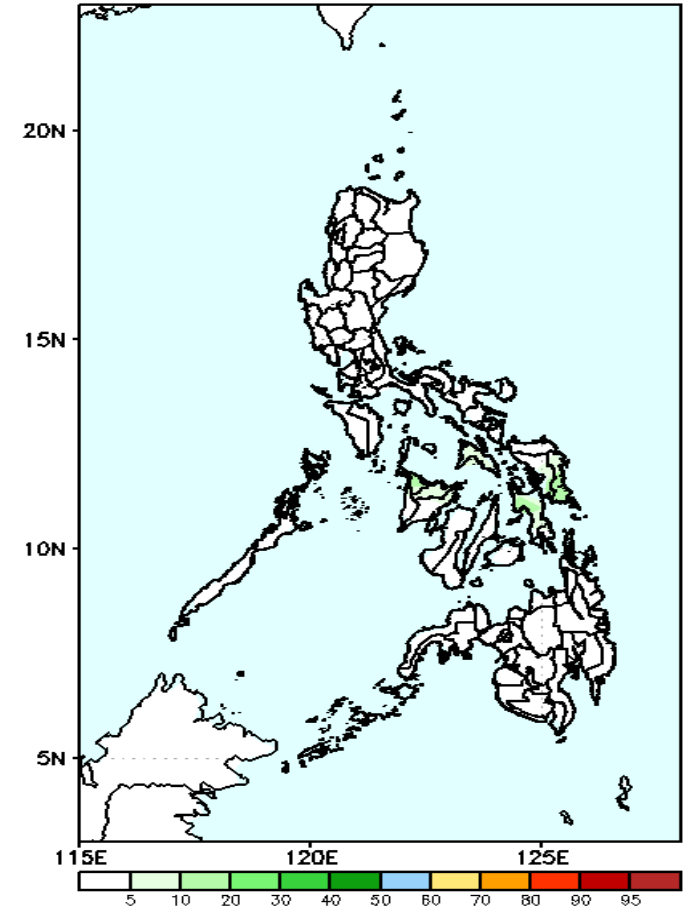
Less probability of rainfall to exceed 100mm in most parts of the country is expected during the forecast period.

GEFS Week-1 Exceedance Prob. > 150mm
Valid: 20211101 - 20211107



Less probability of rainfall to exceed 150mm in most parts of the country is expected during the forecast period.

GEFS Week-1 Exceedance Prob. > 200mm
Valid: 20211101 - 20211107



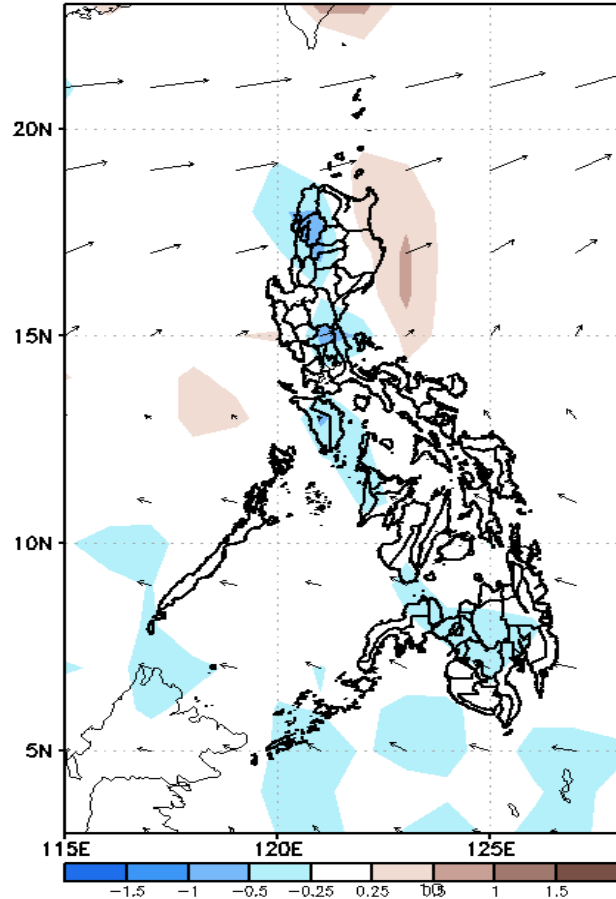
Less probability of rainfall to exceed 200mm in most parts of the country is expected during the forecast period.



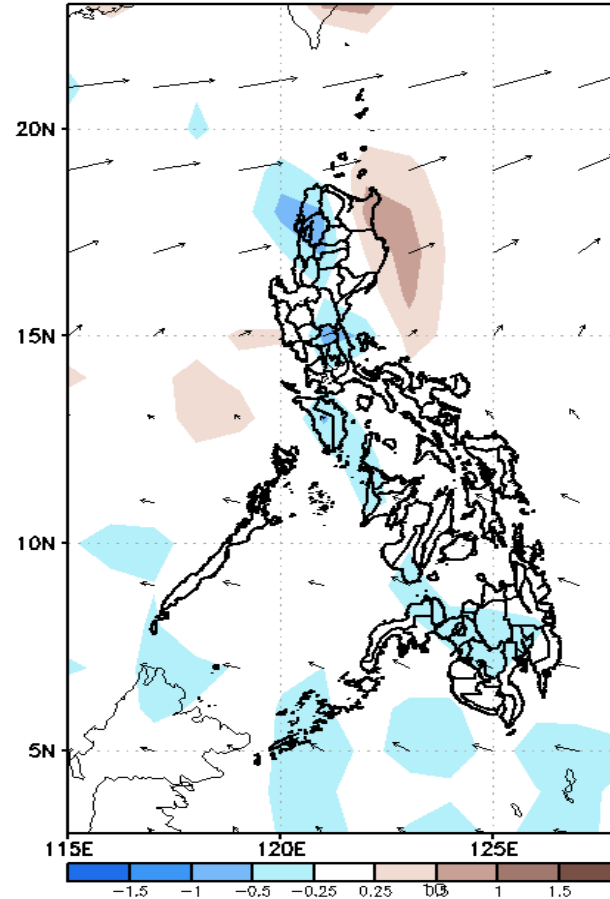
GEFS Week-2 Forecasts: Divergence & Wind Anomaly

Week 2: Nov 08-14, 2021

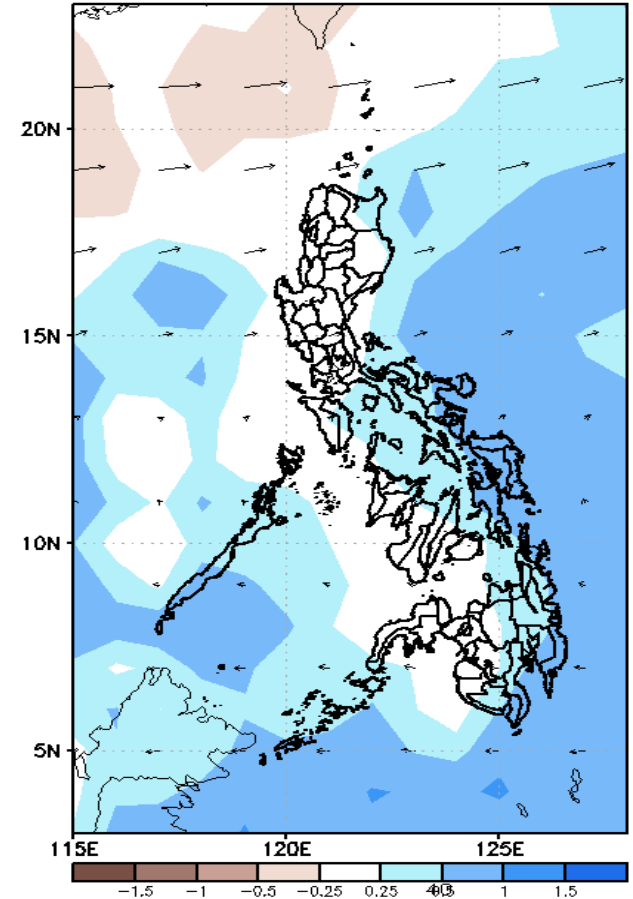
GEFS Week-2 850-hPa Divergence and Wind Anomaly
Valid: 20211108 - 20211114



GEFS Week-2 700-hPa Divergence and Wind Anomaly
Valid: 20211108 - 20211114



GEFS week-2 200-hPa Divergence and Wind Anomaly
Valid: 20211108 - 20211114

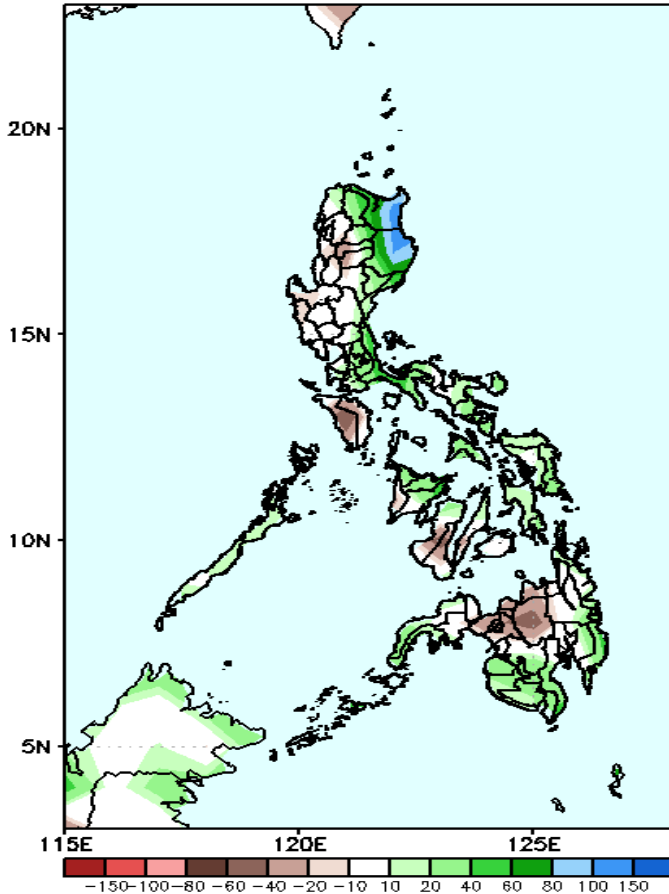


Upper and low level Divergence suggest likelihood of light precipitation in most parts of Luzon and Eastern Visayas and Eastern and Southern Mindanao. Northeast Monsoon affecting the eastern sections of Luzon and Visayas. Easterlies affecting most parts of Mindanao. Attributing to light to moderate rains due to thunderstorms during the forecast period.

Precipitation Anomaly and Exceedance Probability > 25/50 mm

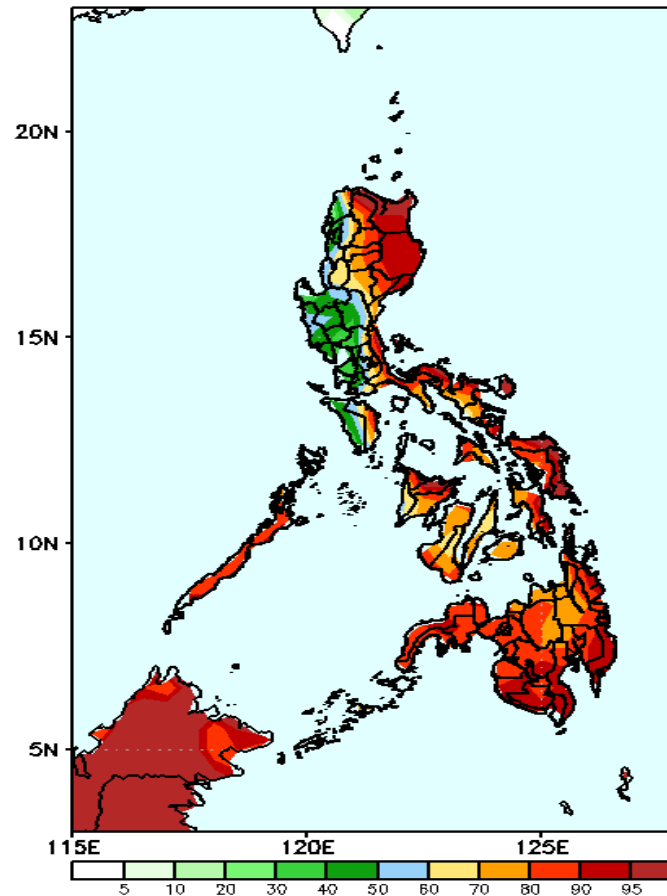
Week 2: Nov 08-14, 2021

GEFS Week-2 Precip Anomaly
Valid: 20211108 - 20211114



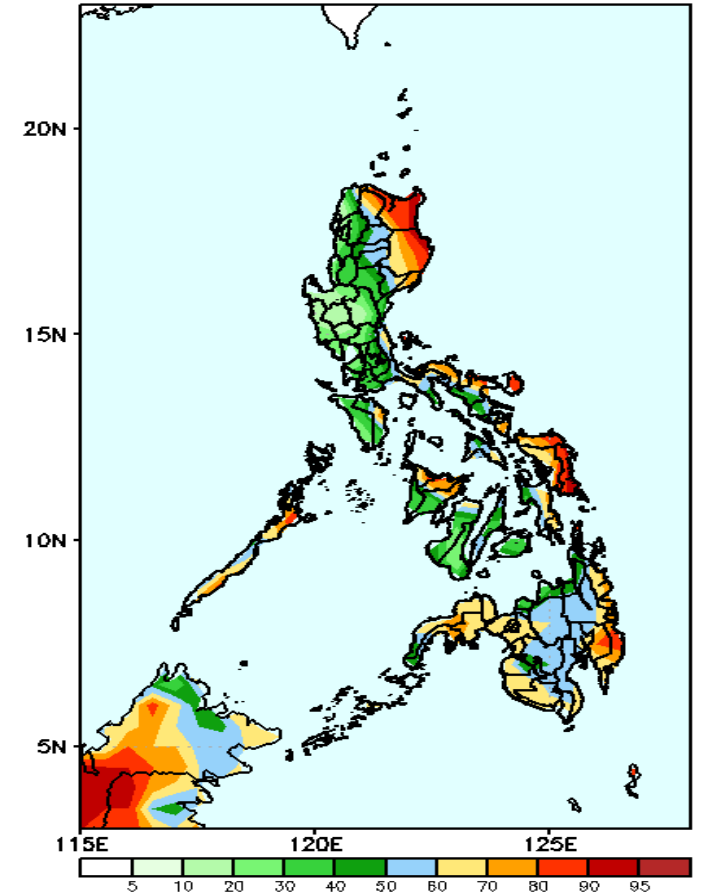
Increase of rainfall of 40-100mm in Cagayan Valley, and 20-80mm for the rest of the country(except in Mindoro and northern Mindanao) during the forecast period.

GEFS Week-2 Exceedance Prob. > 25mm
Valid: 20211108 - 20211114



High probability of rainfall to exceed 25mm in most parts of the country except in Ilocos Region, Central Luzon and Occidental Mindoro during the forecast period.

GEFS Week-2 Exceedance Prob. > 50mm
Valid: 20211108 - 20211114

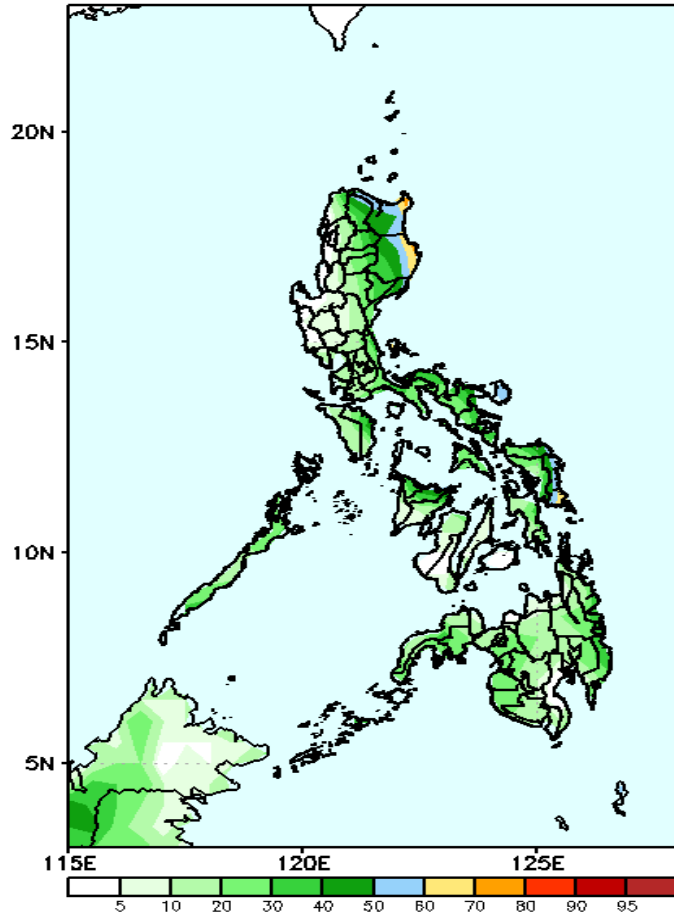


High probability of rainfall to exceed 50mm in Apayao, Cagayan, Isabela, Palawan, Bicol Region (eastern parts), Eastern Visayas, Aklan, Capiz and eastern and western parts of Mindanao while less likely for the rest of the country during the forecast period.

Exceedance Probability > 100/150/200 mm

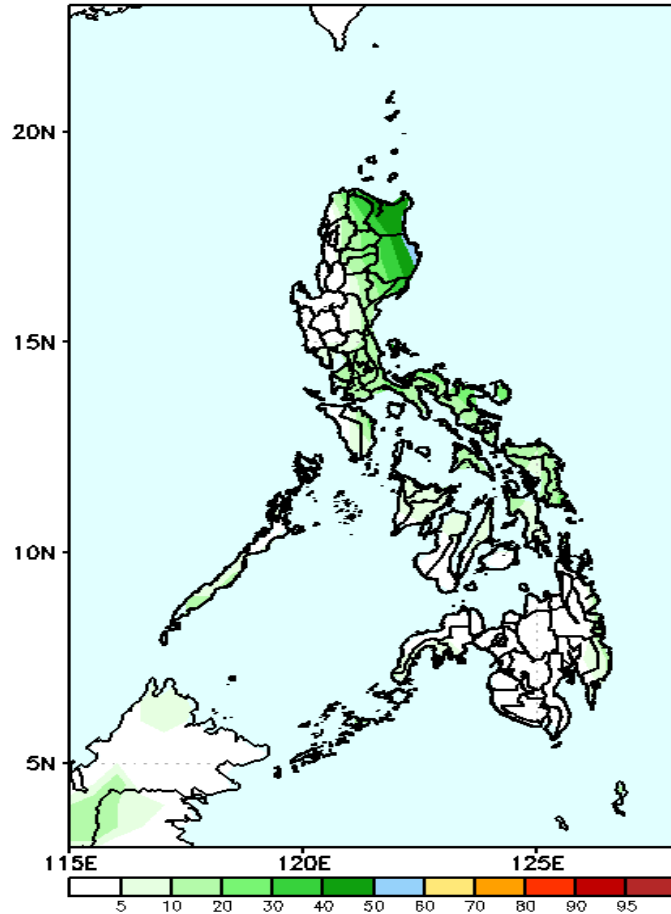
Week 2: Nov 08-14, 2021

GEFS Week-2 Exceedance Prob. > 100mm
Valid: 20211108 - 20211114



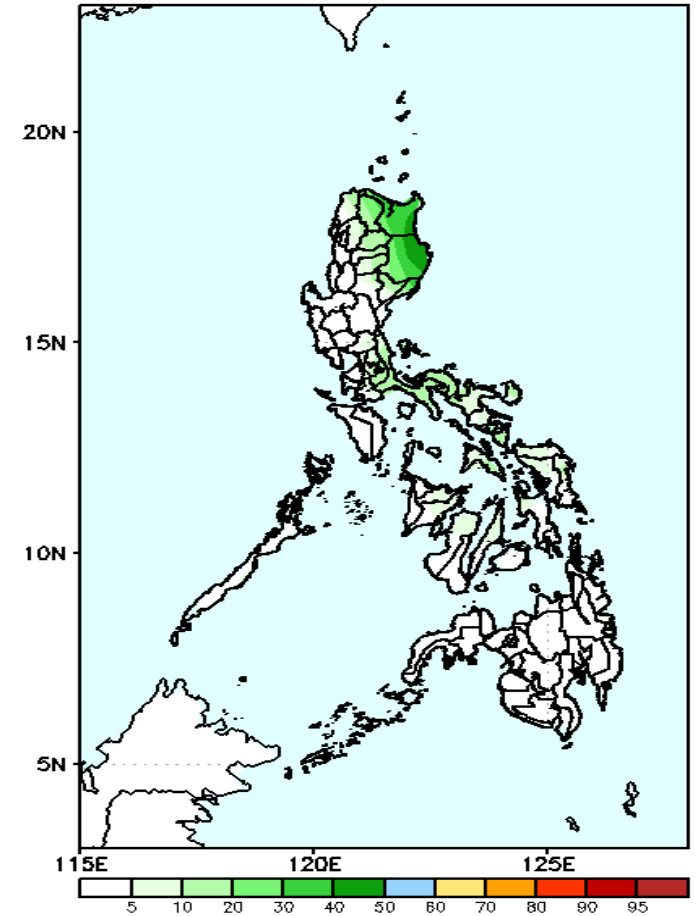
Less probability of rainfall to exceed 100mm in most parts of the country is expected during the forecast period.

GEFS Week-2 Exceedance Prob. > 150mm
Valid: 20211108 - 20211114



Less probability of rainfall to exceed 150mm in most parts of the country is expected during the forecast period.

GEFS Week-2 Exceedance Prob. > 200mm
Valid: 20211108 - 20211114

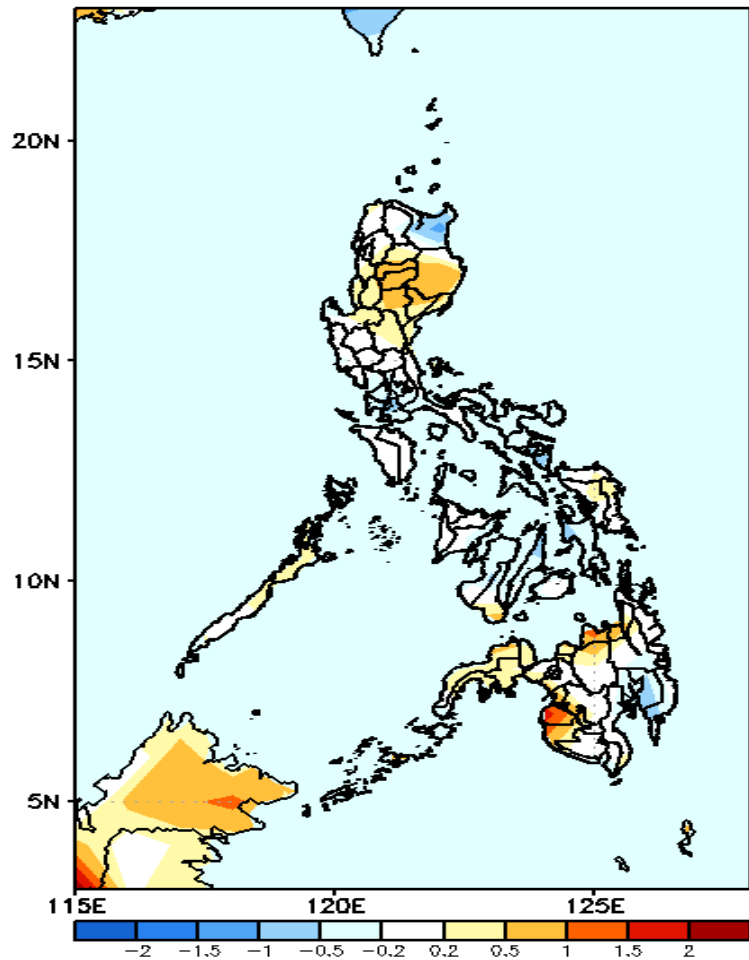


Less probability of rainfall to exceed 200mm in most parts of the country is expected during the forecast period.



GEFS Week-1 & 2 Forecasts: T2m Anomaly

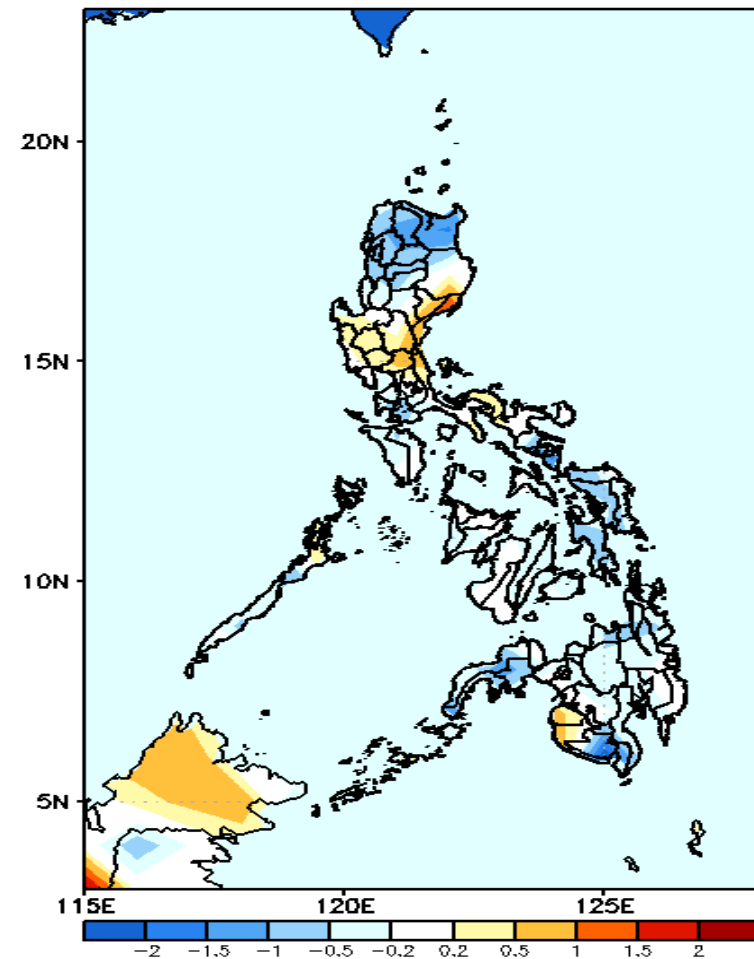
GEFS Week-1 T2m Anomaly
Valid: 20211101 - 20211107



2m Temperature Week 1: Nov 01-07, 2021

Slightly warmer to warmer than average surface air temperature will likely experience in Cordillera Region, Isabela, Misamis Oriental, Maguindanao and Sultan Kudarat while average to slightly cooler temperature for the rest of the country are expected during the forecast period.

GEFS Week-2 T2m Anomaly
Valid: 20211108 - 20211114



2m Temperature Week 2: Nov 08-14, 2021

Slightly cooler to cooler than average surface air temperature will likely experience in most parts of northern Luzon, Eastern Visayas, Zamboanga Peninsula, Saranggani & South Cotabato while average to slightly warmer temperature for the rest of the country are expected during the forecast period.