



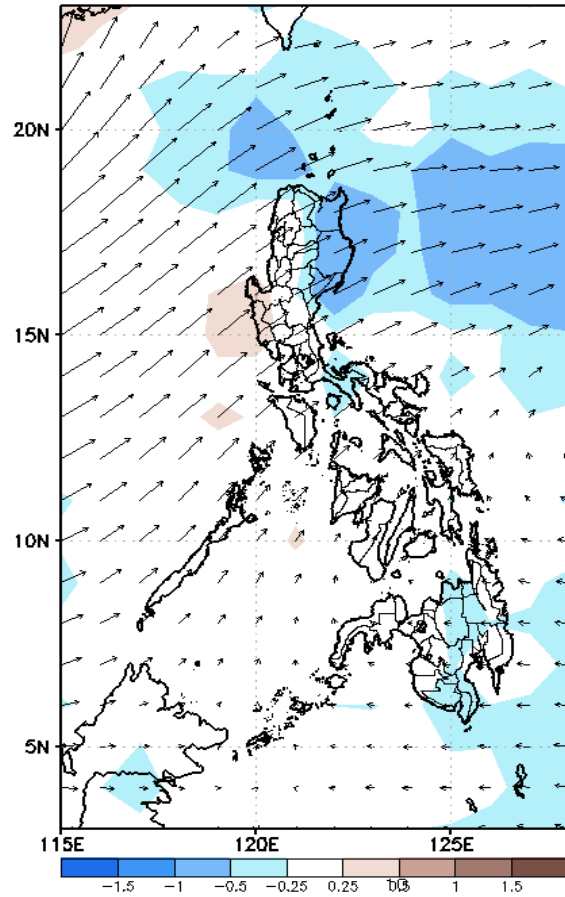
Week 1 & Week 2 Forecast for the Philippines using GEFS Model



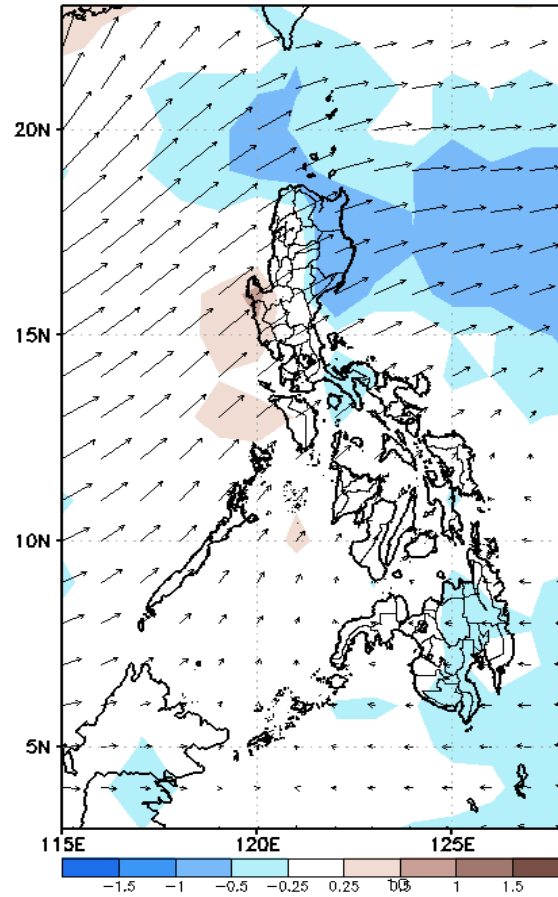
GEFS Week-1 Forecasts: Wind Anomaly Forecast

Week 1: Jul 01- Jul 07, 2022

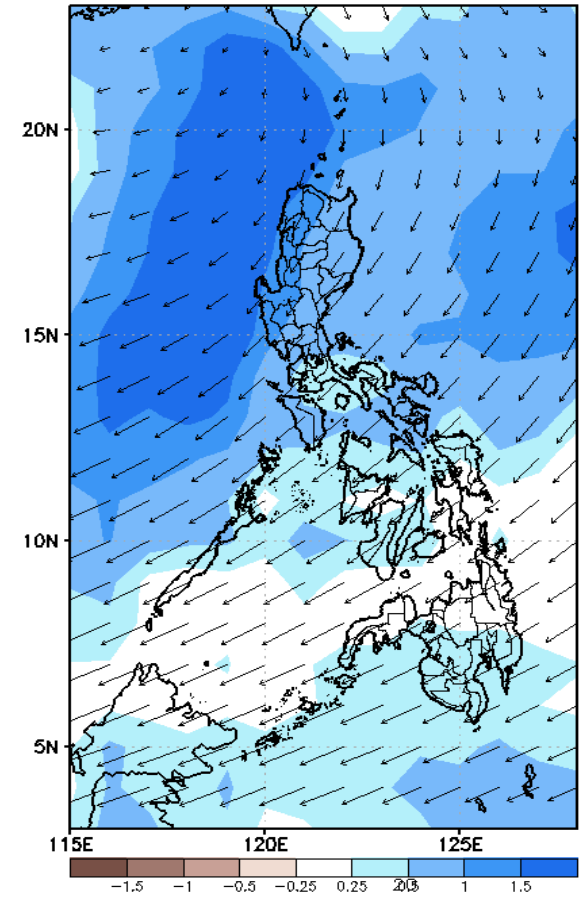
GEFS Week-1 850-hPa Divergence and Wind Anomaly
Valid: 20220701 - 20220707



GEFS Week-1 700-hPa Divergence and Wind Anomaly
Valid: 20220701 - 20220707



GEFS Week-1 200-hPa Divergence and Wind Anomaly
Valid: 20220701 - 20220707

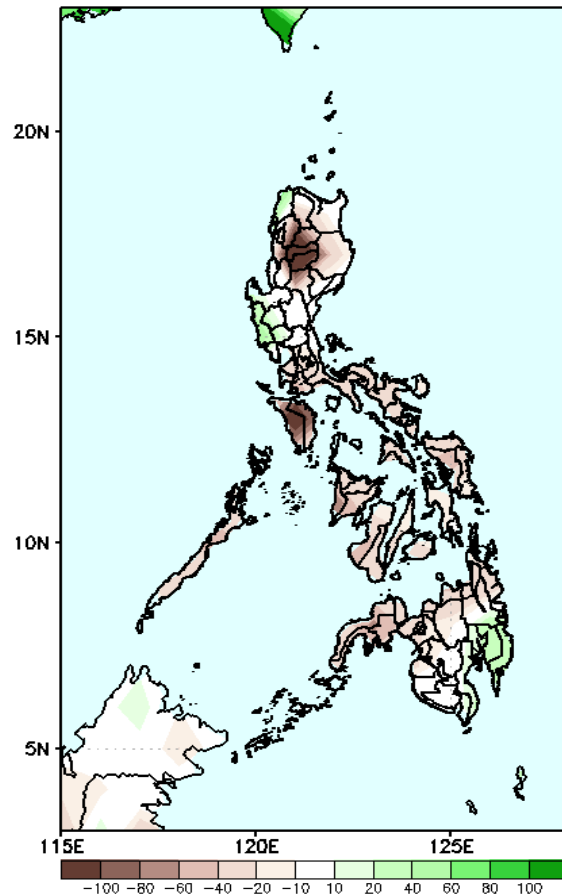


Southwest Monsoon affecting most parts of Luzon and Western Visayas while Easterlies affecting the rest of the country during the forecast period.

Precipitation Anomaly and Exceedance Probability > 25/50 mm

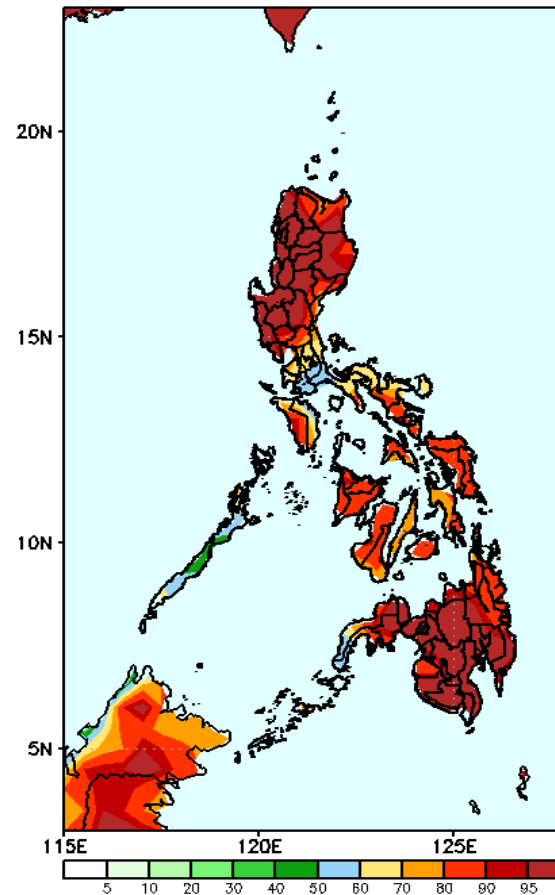
Week 1: Jul 01 - Jul 07, 2022

GEFS Week-1 Precip Anomaly
Valid: 20220701 - 20220707



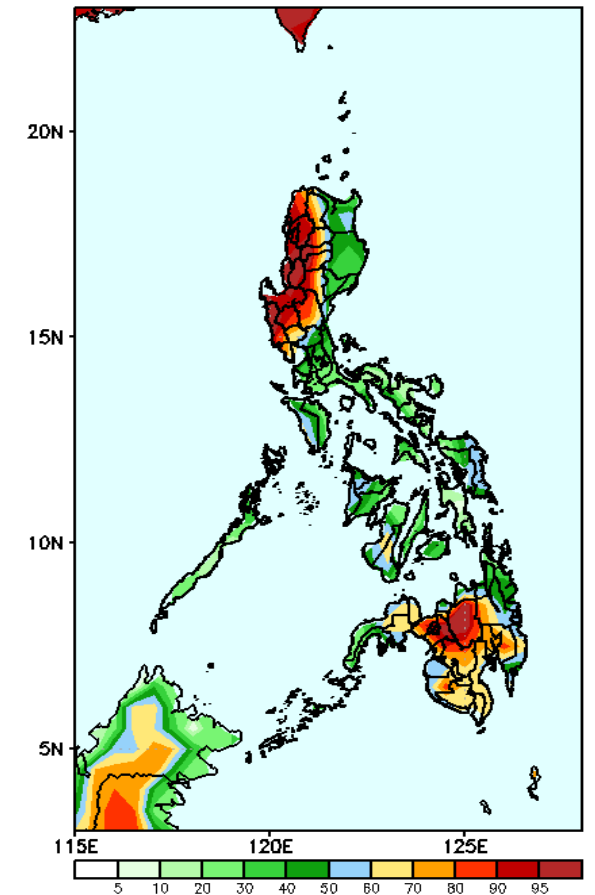
40 – 100mm rainfall deficit will be likely in most parts of the country while an increase of rainfall of 20 – 60mm is expected in Ilocos Norte, Zambales and Davao Region during the forecast period .

GEFS Week-1 Exceedance Prob. > 25mm
Valid: 20220701 - 20220707



High probability of rainfall to exceed 25mm in most parts of the country during the forecast period.

GEFS Week-1 Exceedance Prob. > 50mm
Valid: 20220701 - 20220707



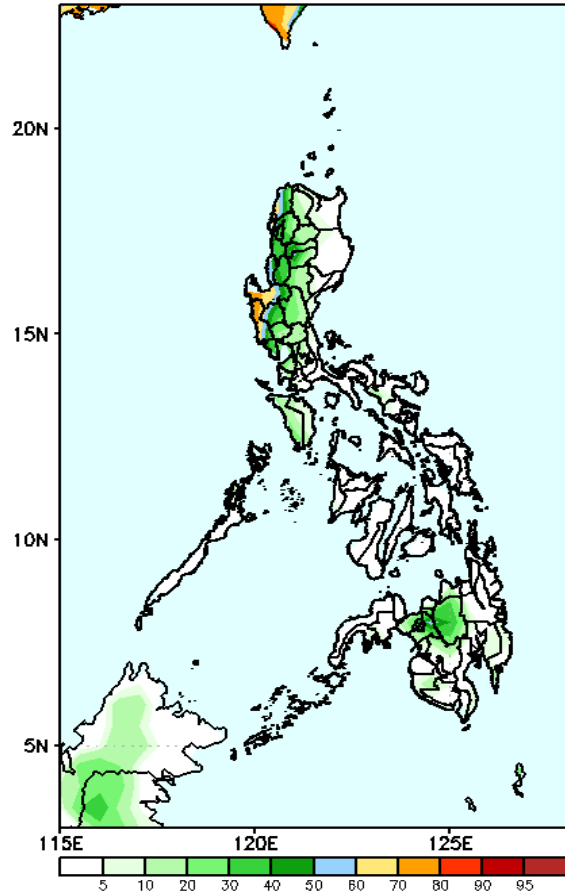
High probability of rainfall to exceed 50mm in most parts of Ilocos Region, CAR, Central Luzon (except Aurora) and most parts of Mindanao while less likely for the rest of the country during the forecast period.



Exceedance Probability > 100/150/200 mm

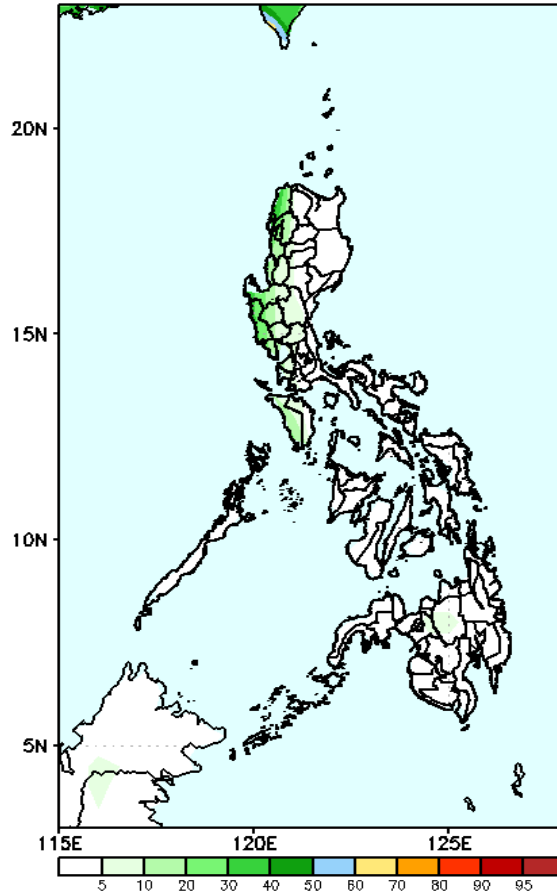
Week 1: Jul 01 - Jul 07, 2022

GEFS Week-1 Exceedance Prob. > 100mm
Valid: 20220701 - 20220707



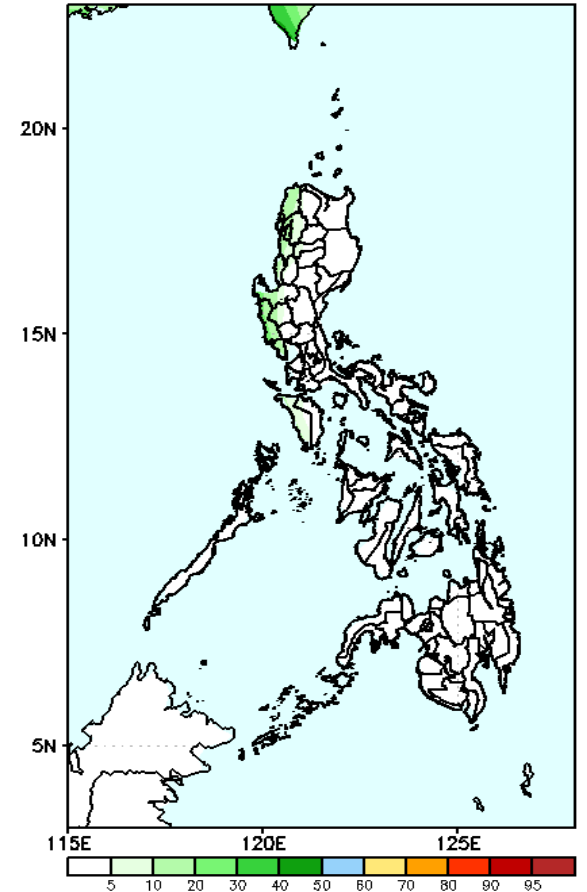
60-95% probability of rainfall to exceed 100mm in Pangasinan and Zambales while less likely for the rest of the country during the forecast period.

GEFS Week-1 Exceedance Prob. > 150mm
Valid: 20220701 - 20220707



Low probability of rainfall to exceed 150mm in most parts of the country during the forecast period.

GEFS Week-1 Exceedance Prob. > 200mm
Valid: 20220701 - 20220707

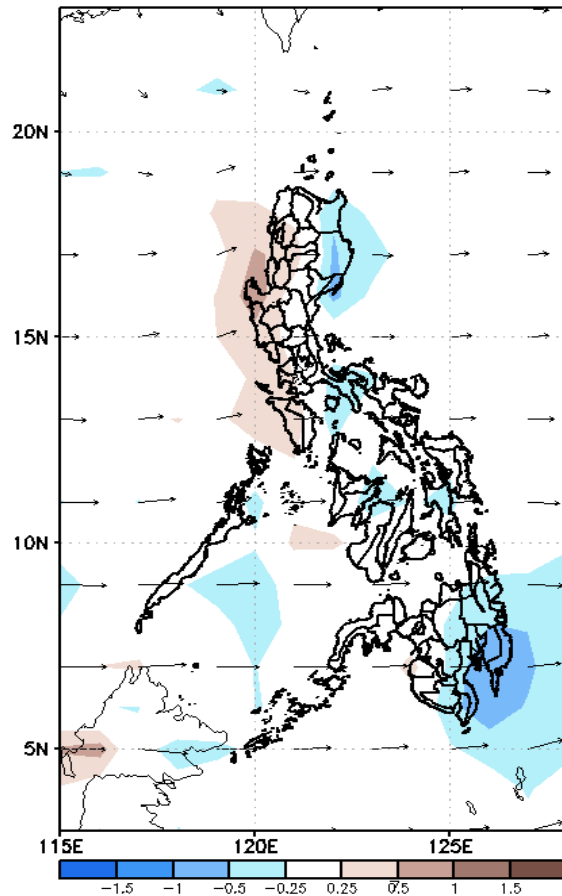


Low probability of rainfall to exceed 200mm in most parts of the country during the forecast period.

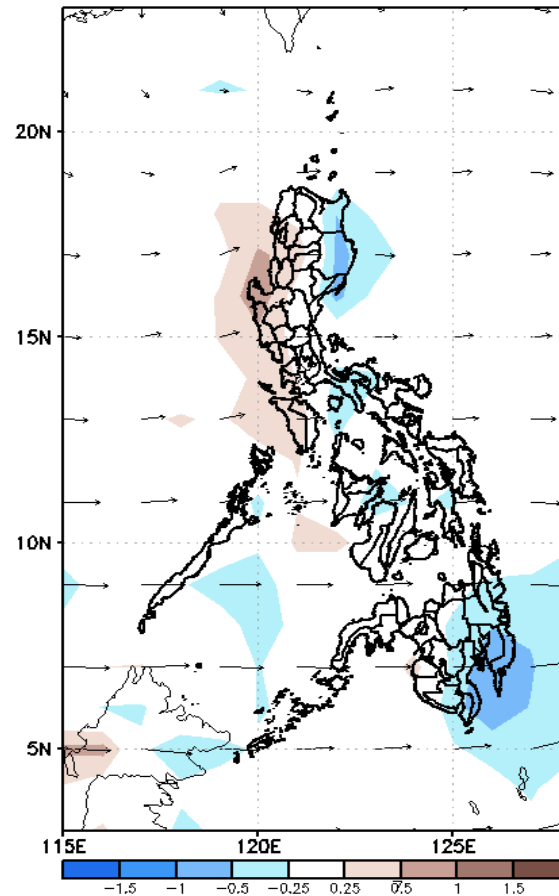
GEFS Week-2 Forecasts: Wind Anomaly Forecast

Week 2: Jul 08 – Jul 14, 2022

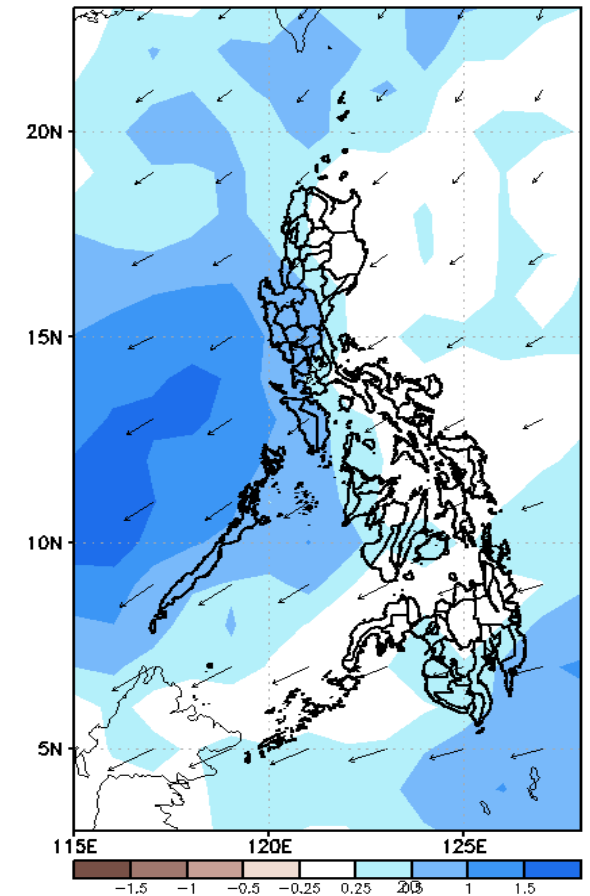
GEFS Week-2 850-hPa Divergence and Wind Anomaly
Valid: 20220708 – 20220714



GEFS Week-2 700-hPa Divergence and Wind Anomaly
Valid: 20220708 – 20220714



GEFS week-2 200-hPa Divergence and Wind Anomaly
Valid: 20220708 – 20220714

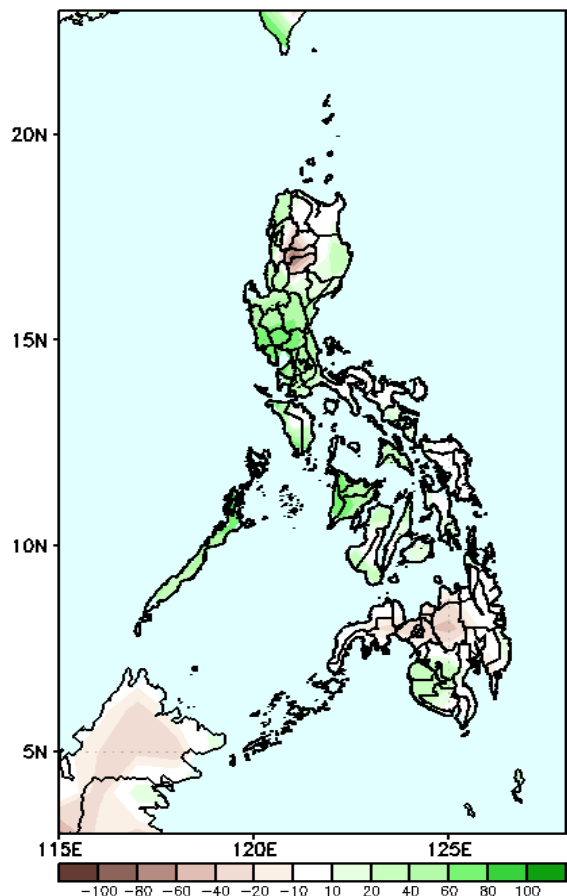


Westerly winds affecting most parts of the country during the forecast period.

Precipitation Anomaly and Exceedance Probability > 25/50 mm

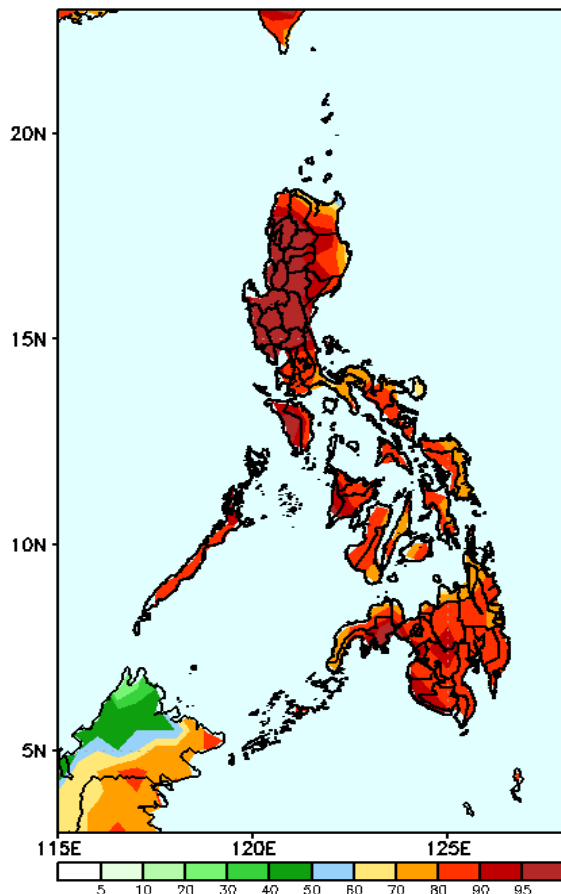
Week 2: Jul 08 – Jul 14, 2022

GEFS Week-2 Precip Anomaly
Valid: 20220708 – 20220714



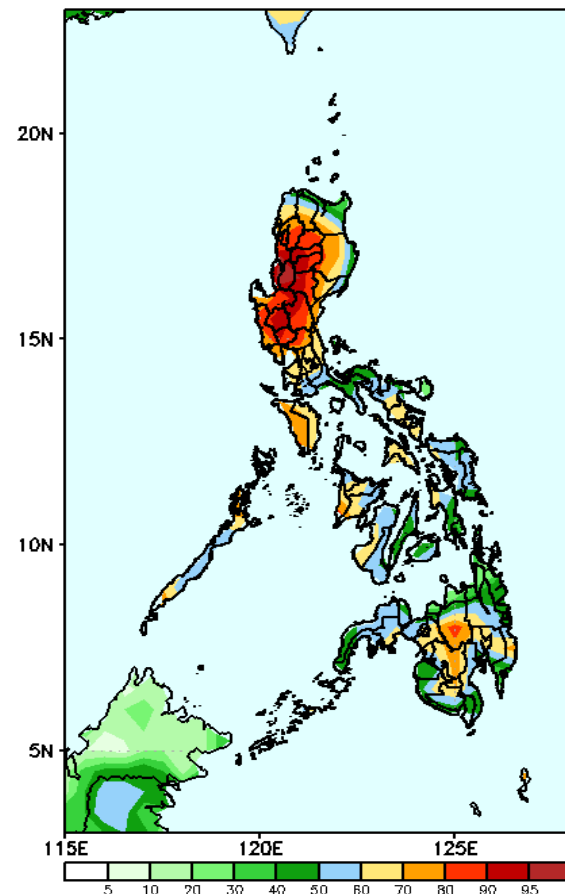
40-80mm increase of rainfall in most parts of the country except Mt. Province, Ifugao and Bukidnon, Eastern Visayas and most parts of Mindanao(except Northern Mindanao, CARAGA and Zamboanga peninsula were rainfall deficit of 40 - 60mm is expected during the forecast period.

GEFS Week-2 Exceedance Prob. > 25mm
Valid: 20220708 – 20220714



High probability of rainfall to exceed 25mm in most parts of the country during the forecast period.

GEFS Week-2 Exceedance Prob. > 50mm
Valid: 20220708 – 20220714

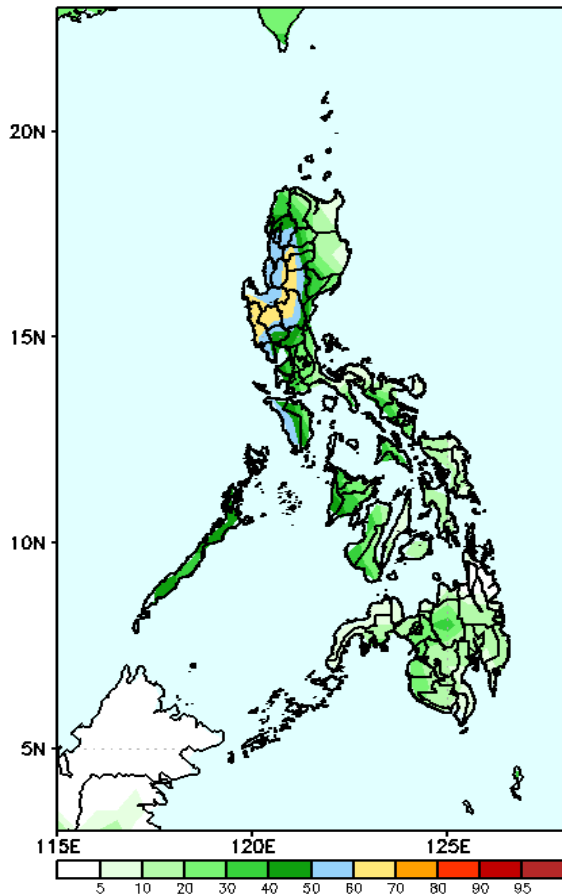


High probability of rainfall to exceed 50mm in most parts the country except in some parts of Quezon, Camariner Norte, Catanduanes, Central Visayas, Southern Leyte, CARAGA during the forecast period

Exceedance Probability > 100/150/200 mm

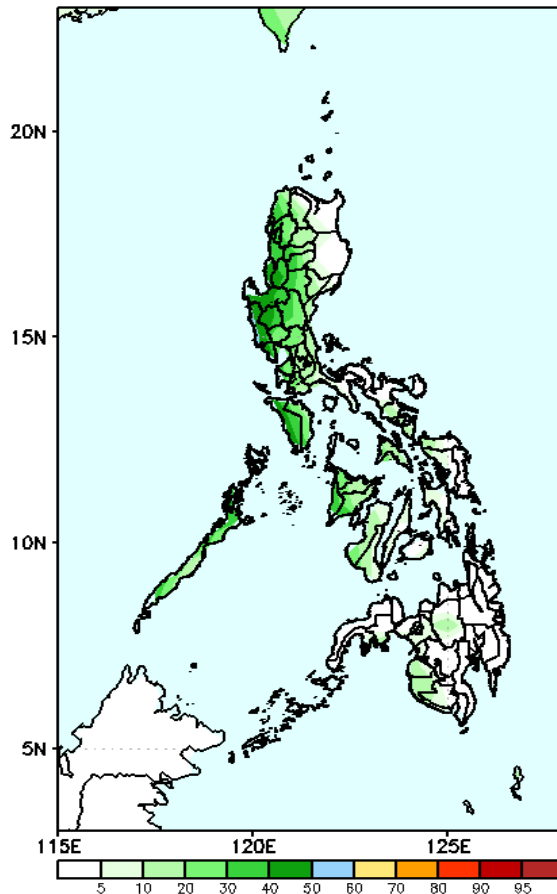
Week 2: Jul 08 – Jul 14, 2022

GEFS Week-2 Exceedance Prob. > 100mm
Valid: 20220708 – 20220714



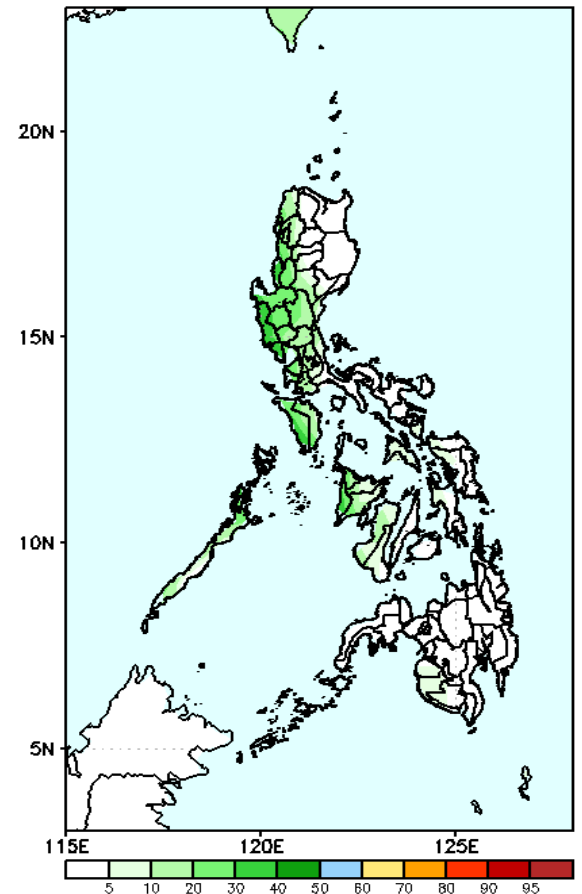
Low probability of rainfall to exceed 100mm in most parts of the country except some areas in Northern and Central Luzon during the forecast period.

GEFS Week-2 Exceedance Prob. > 150mm
Valid: 20220708 – 20220714



Low probability of rainfall to exceed 150mm in most parts of the country during the forecast period.

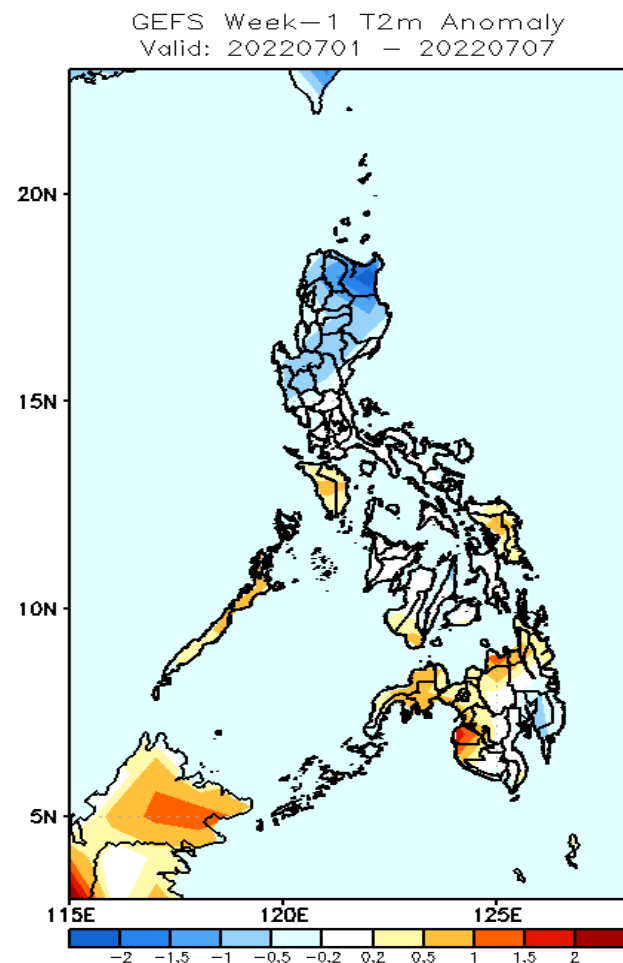
GEFS Week-2 Exceedance Prob. > 200mm
Valid: 20220708 – 20220714



Low probability of rainfall to exceed 200mm in most parts of the country during the forecast period.

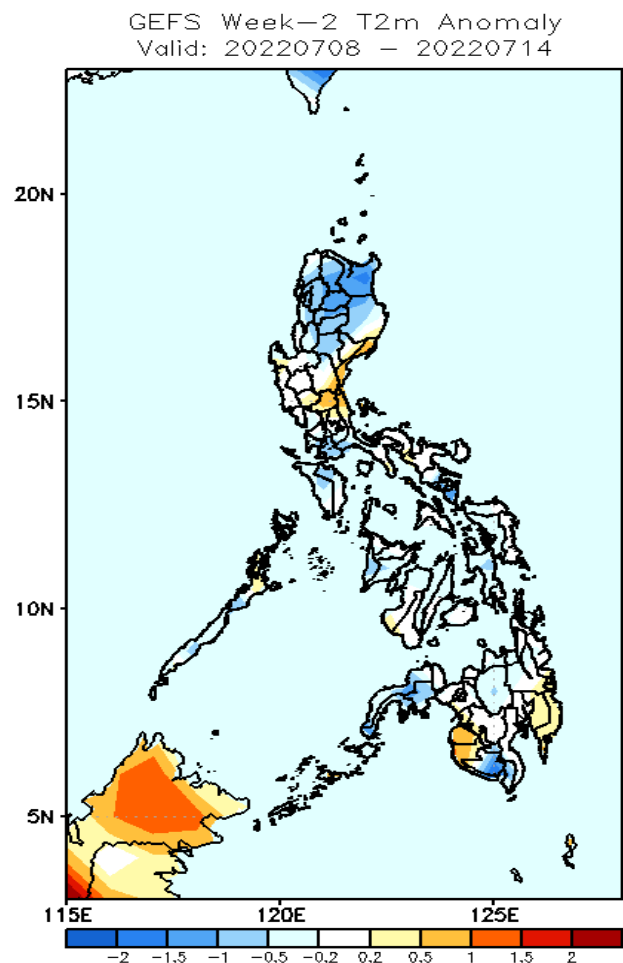


GEFS Week-1 & 2 Forecasts: T2m Anomaly



2m Temperature Week 1: Jul 01- Jul 07, 2022

Slightly cooler to cooler surface air temperature will likely experience in most parts of Luzon and Davao Region while average to warmer than average surface air temperature in most parts of Visayas and Mindanao during the forecast period.



2m Temperature Week 2: Jul 08 – Jul 14, 2022

Slightly cooler than surface air temperature will likely experience in most parts of the country except Aurora, Bulacan, parts of Western Visayas, Davao region, Maguindanao and Sultan Kudarat were average to warmer than average surface air temperature will be likely for the rest of the country during the forecast period.