



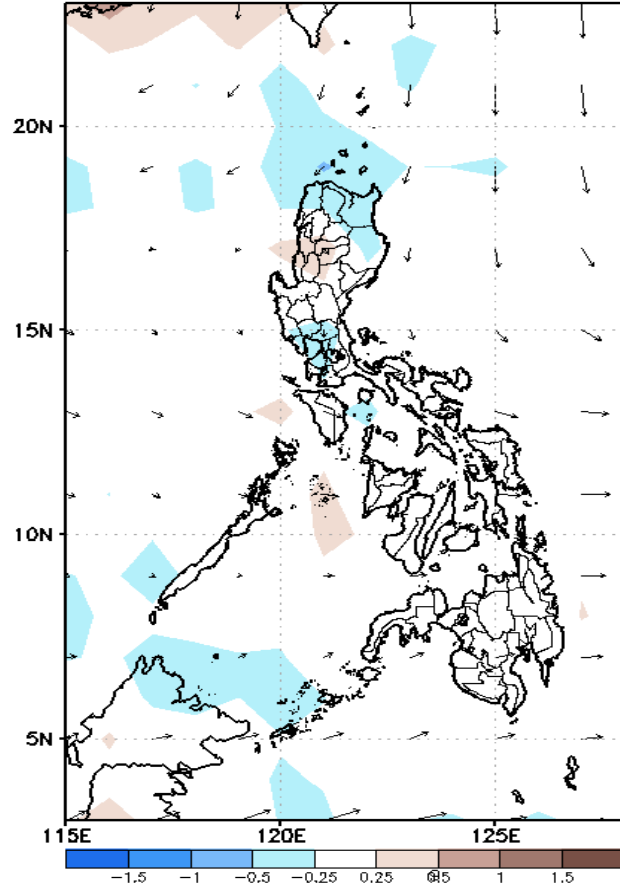
Week 1 & Week 2 Forecast for the Philippines using GEFS Model



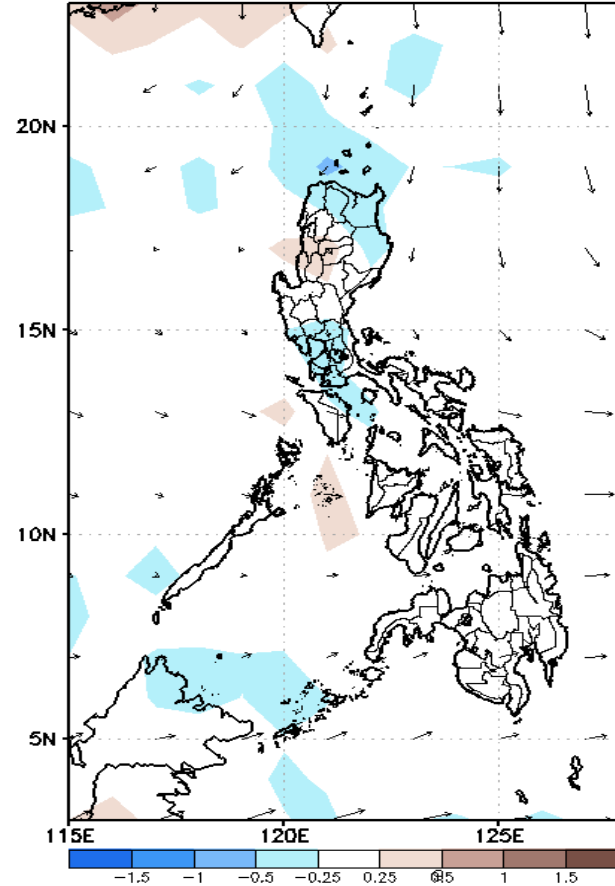
GEFS Week-1 Forecasts: Divergence & Wind Anomaly

Week 1: April 01-07, 2021

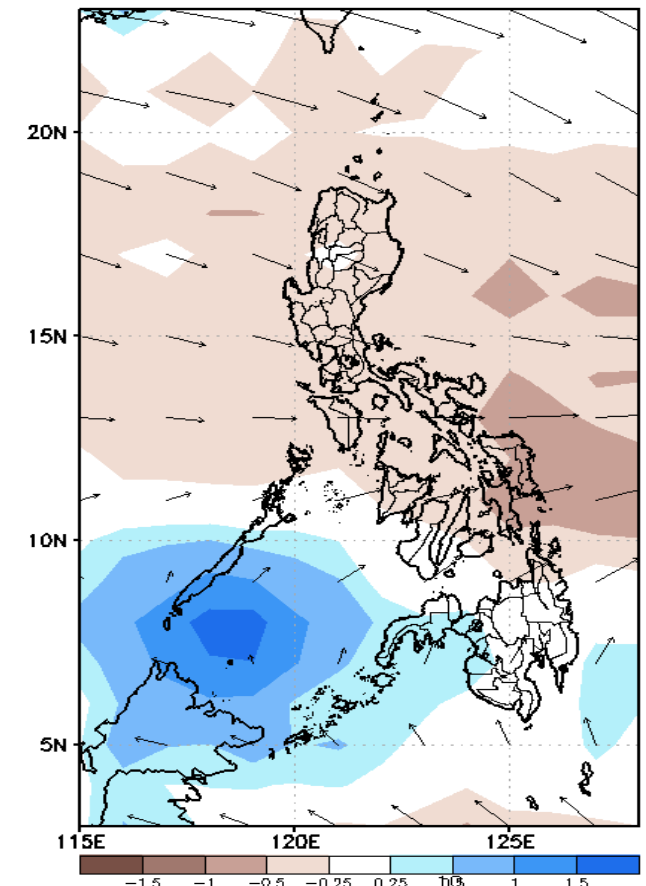
GEFS Week-1 850-hPa Divergence and Wind Anom
Valid: 20210401 - 20210407



GEFS Week-1 700-hPa Divergence and Wind Anom
Valid: 20210401 - 20210407



GEFS Week-1 200-hPa Divergence and Wind Anom
Valid: 20210401 - 20210407

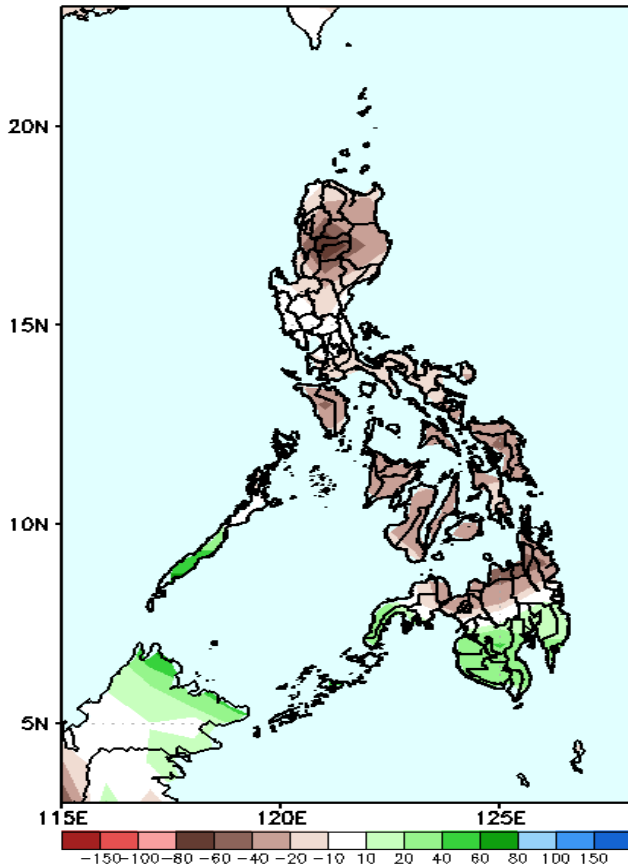


Upper and low level Divergence suggest less likelihood of precipitation in most parts of the country except Zamboanga peninsula. Easterlies affecting most parts of the country during the forecast period.

Precipitation Anomaly and Exceedance Probability > 25/50 mm

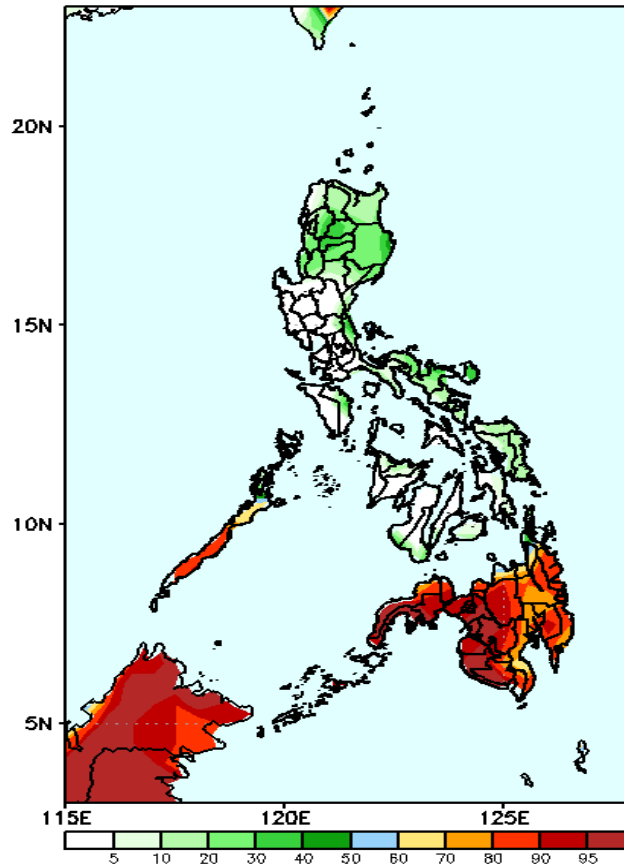
Week 1: April 01-07, 2021

GEFS Week-1 Precip Anomaly
Valid: 20210401 – 20210407



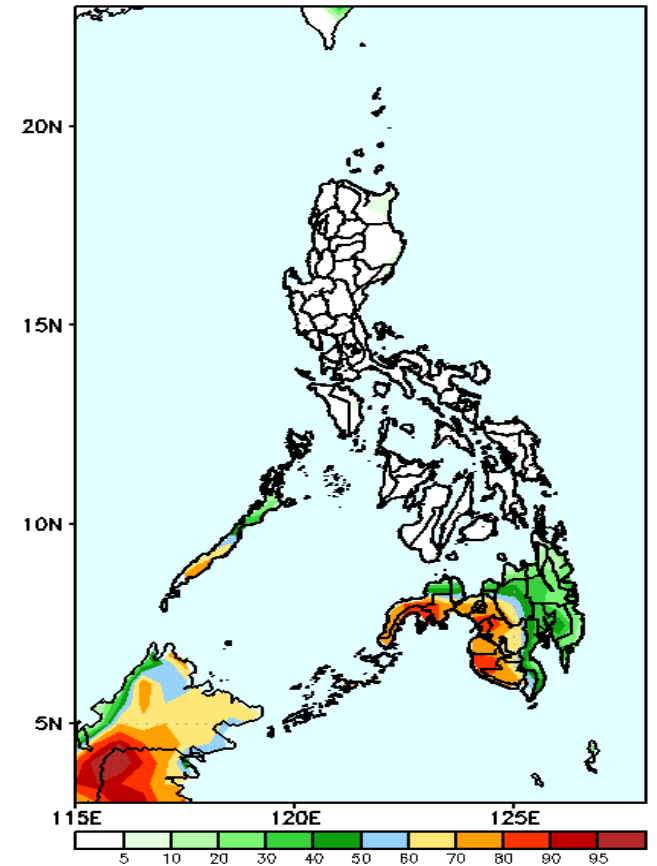
Rainfall deficit of up to 80mm is expected in most parts of the country except in the southern half of Mindanao where increase of rainfall of up to 60mm is more likely during the forecast period.

GEFS Week-1 Exceedance Prob. > 25mm
Valid: 20210401 – 20210407



High probability of rainfall to exceed 25mm in most parts of Mindanao while less likely for the rest of the country during the forecast period.

GEFS Week-1 Exceedance Prob. > 50mm
Valid: 20210401 – 20210407



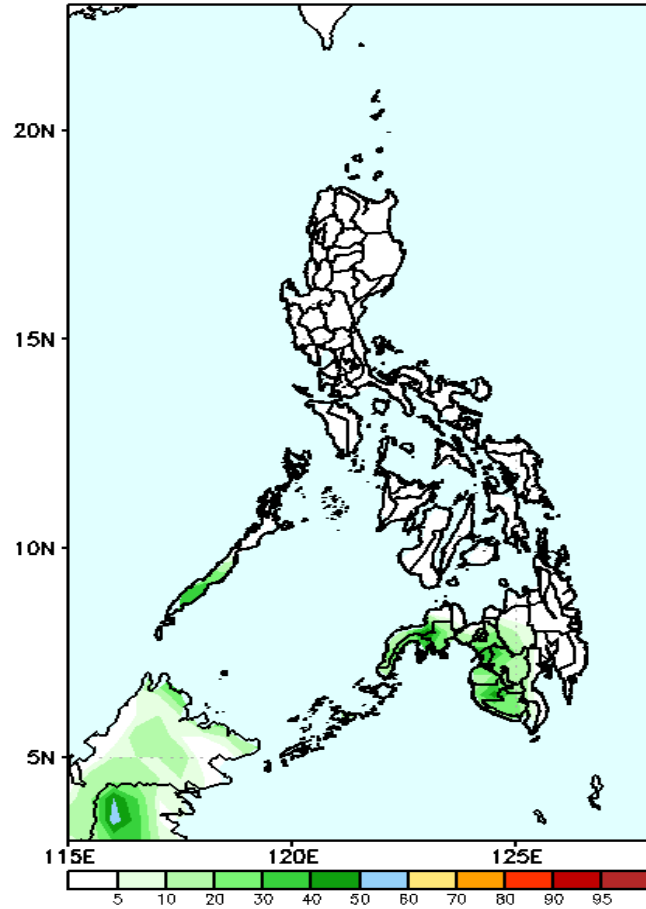
High probability of rainfall to exceed 50mm in the western parts of Mindanao while less likely for the rest of the country during the forecast period.



Exceedance Probability > 100/150/200 mm

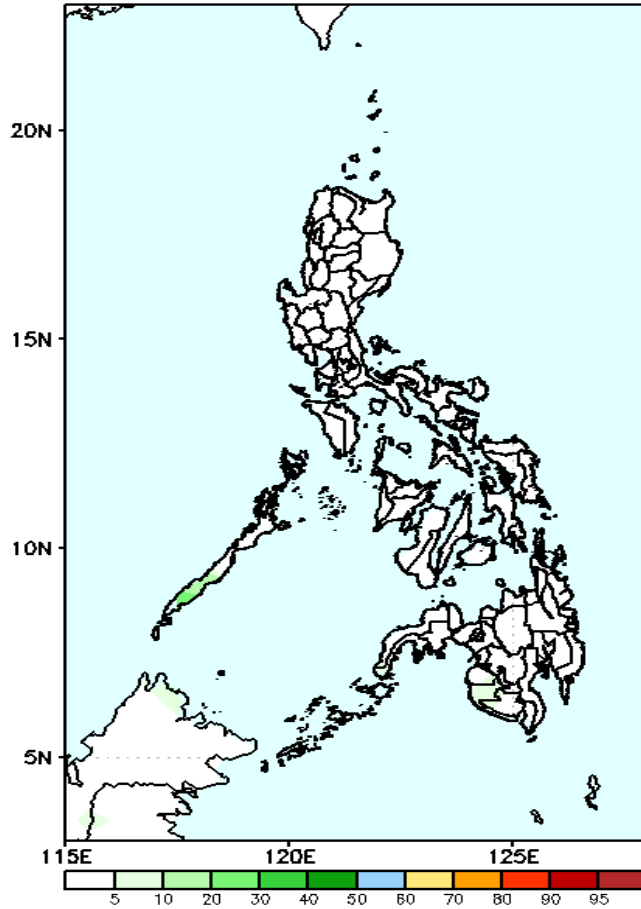
Week 1: April 01-07, 2021

GEFS Week-1 Exceedance Prob. > 100mm
Valid: 20210401 – 20210407



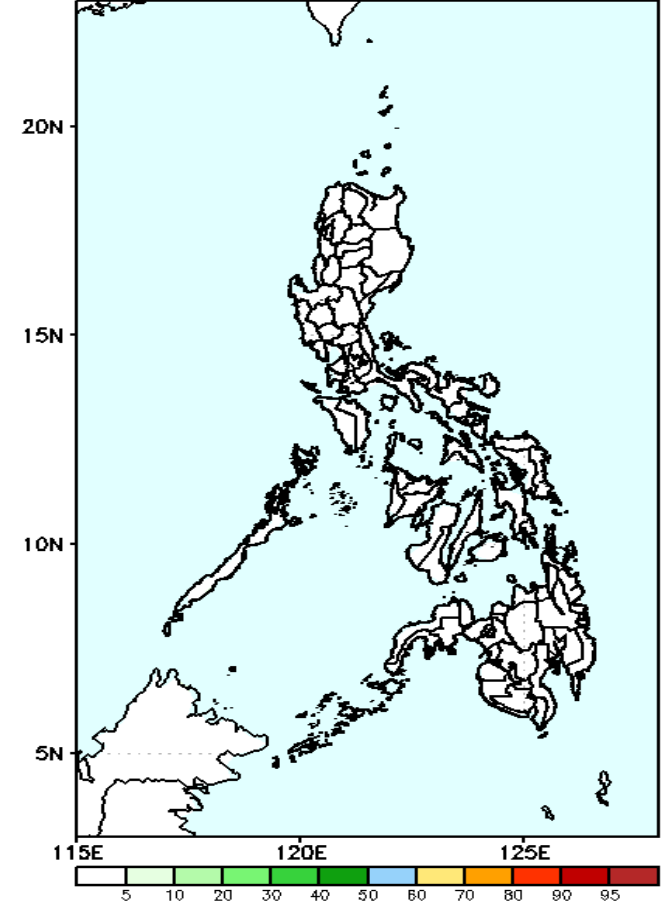
Less probability of rainfall to exceed 100mm in most parts of the country during the forecast period.

GEFS Week-1 Exceedance Prob. > 150mm
Valid: 20210401 – 20210407



Less probability of rainfall to exceed 150mm in most parts of the country during the forecast period.

GEFS Week-1 Exceedance Prob. > 200mm
Valid: 20210401 – 20210407

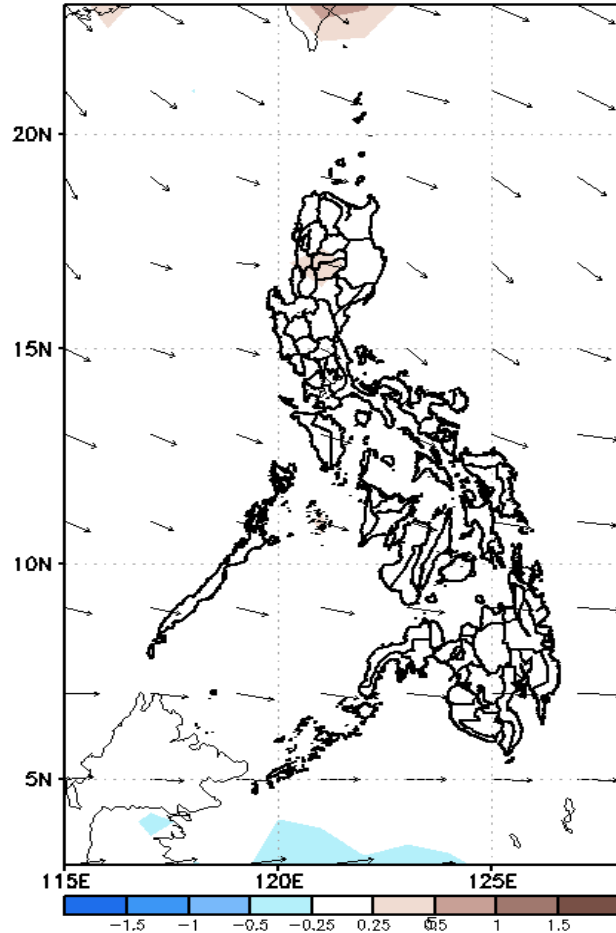


Less probability of rainfall to exceed 200mm in most parts of the country during the forecast period.

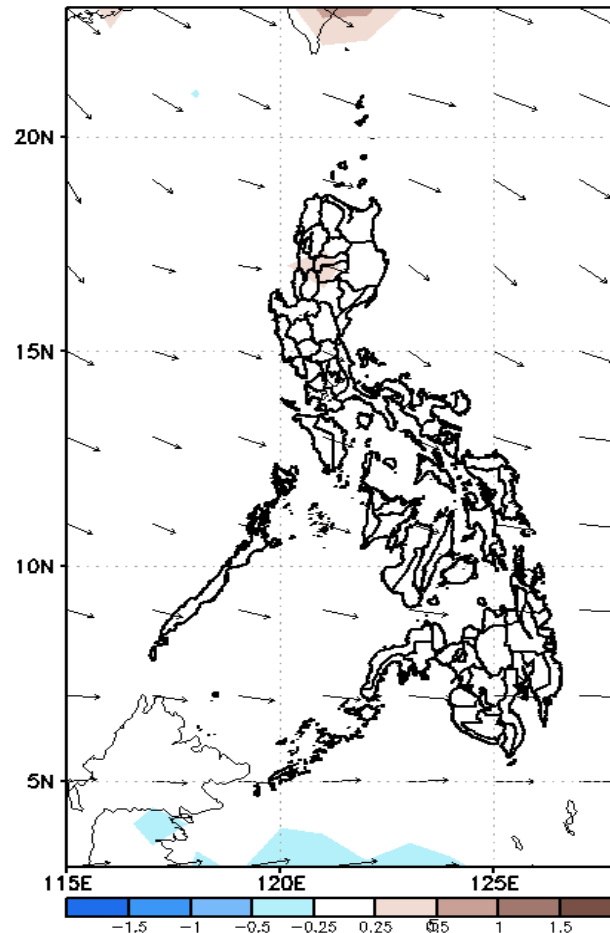
GEFS Week-2 Forecasts: Divergence & Wind Anomaly

Week 2: April 08-14, 2021

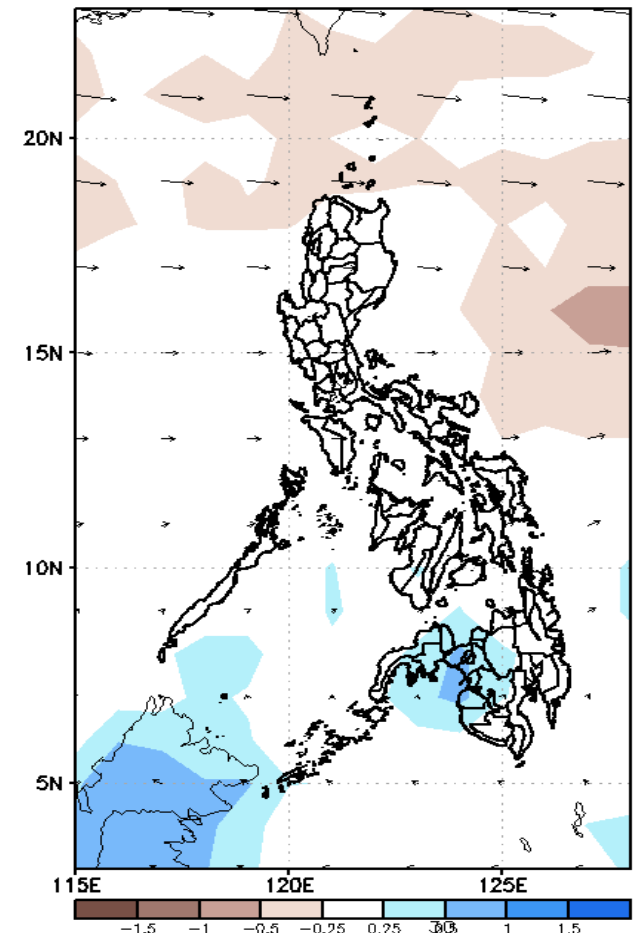
GEFS Week-2 850-hPa Divergence and Wind Anom
Valid: 20210408 - 20210414



GEFS Week-2 700-hPa Divergence and Wind Anom
Valid: 20210408 - 20210414



GEFS week-2 200-hPa Divergence and Wind Anom
Valid: 20210408 - 20210414

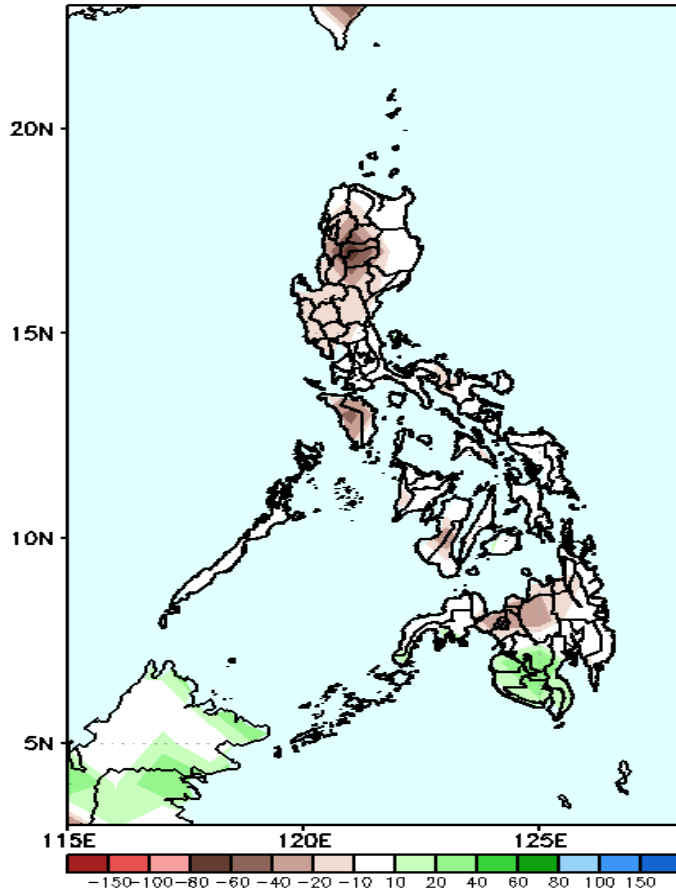


Upper and low level Divergence suggest a likelihood of precipitation in Zamboanga peninsula, Maguindanao, Sultan Kudarat, Lanao provinces and parts of Bukidnon. Easterlies affecting most parts of the country during the forecast period.

Precipitation Anomaly and Exceedance Probability > 25/50 mm

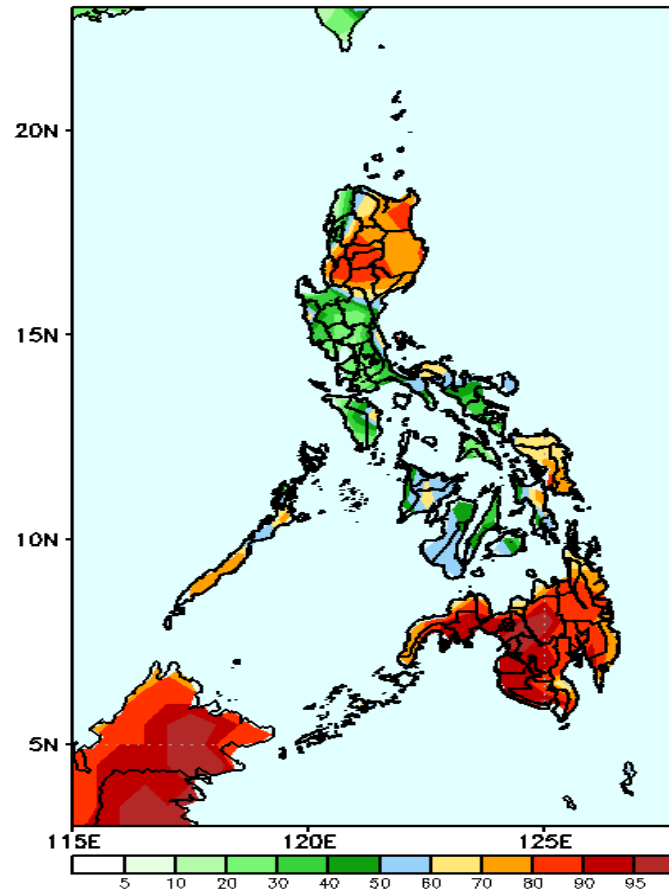
Week 2: April 08-14, 2021

GEFS Week-2 Precip Anomaly
Valid: 20210408 – 20210414



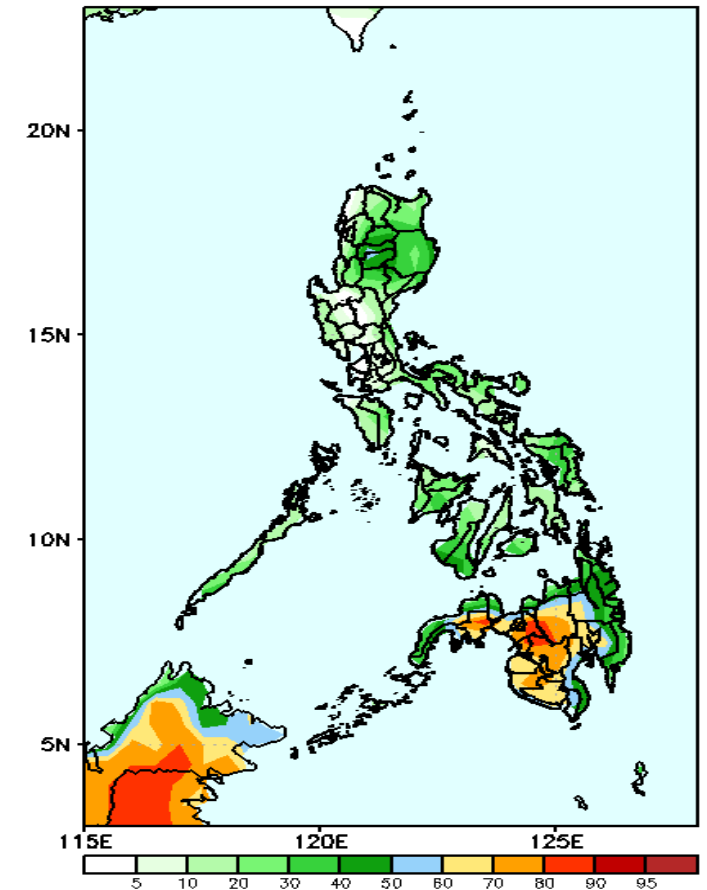
Rainfall deficit of up to 80mm is expected in most parts of the country except in Cagayan & Isabela and southwestern Mindanao where increase of rainfall up to 50mm is more likely during the forecast period.

GEFS Week-2 Exceedance Prob. > 25mm
Valid: 20210408 – 20210414



High probability of rainfall to exceed 25mm in most parts of northern half of Luzon, Palawan, Samar Provinces, Leyte and most parts of Mindanao while less likely for the rest of the country during the forecast period.

GEFS Week-2 Exceedance Prob. > 50mm
Valid: 20210408 – 20210414

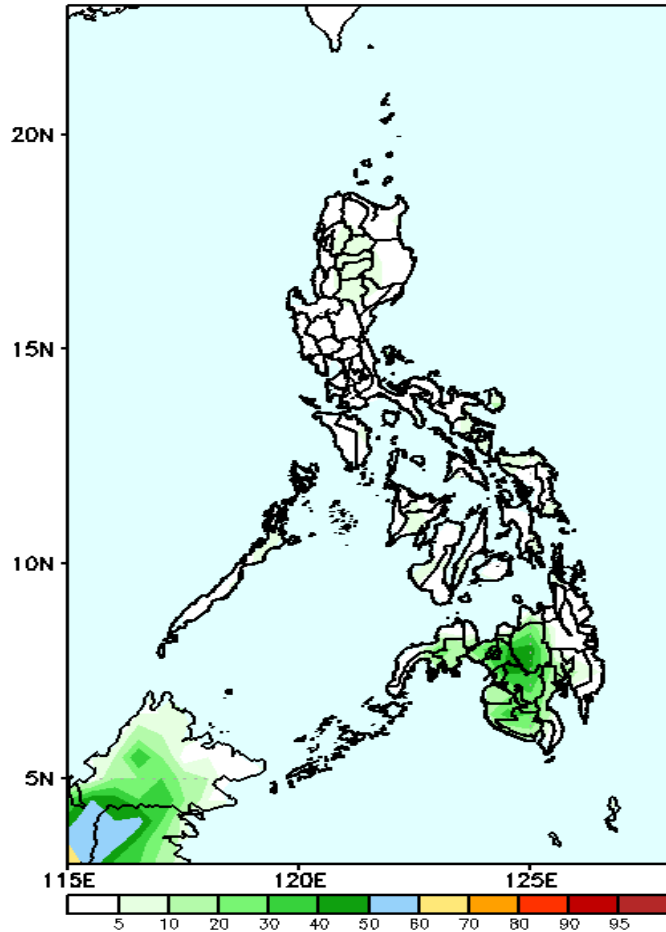


Less probability of rainfall to exceed 50mm in most parts of the country except in western parts of Mindanao with 70-90% chance during the forecast period.

Exceedance Probability > 100/150/200 mm

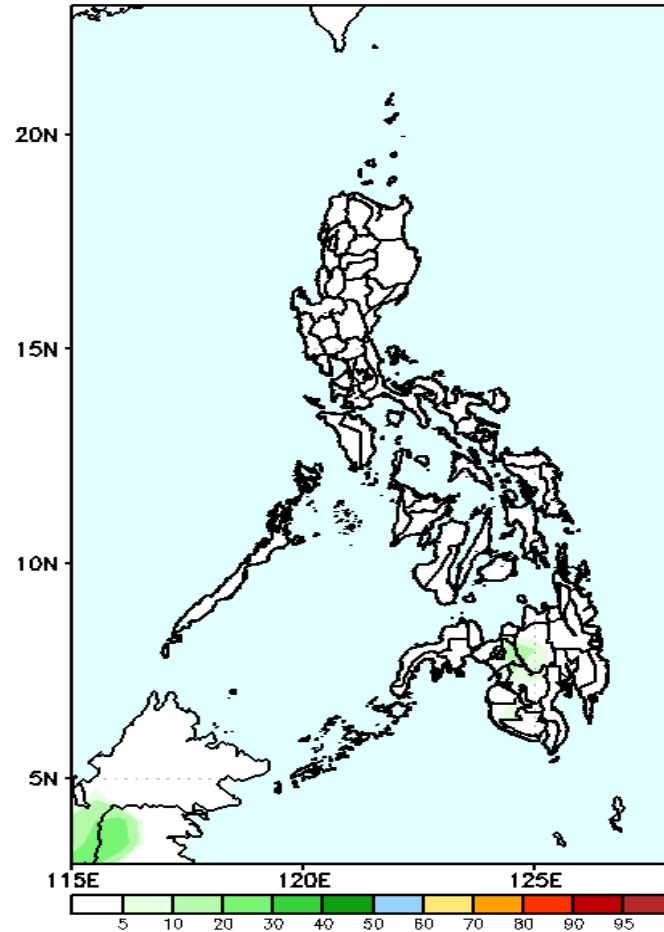
Week 2: April 08-14, 2021

GEFS Week-2 Exceedance Prob. > 100mm
Valid: 20210408 – 20210414



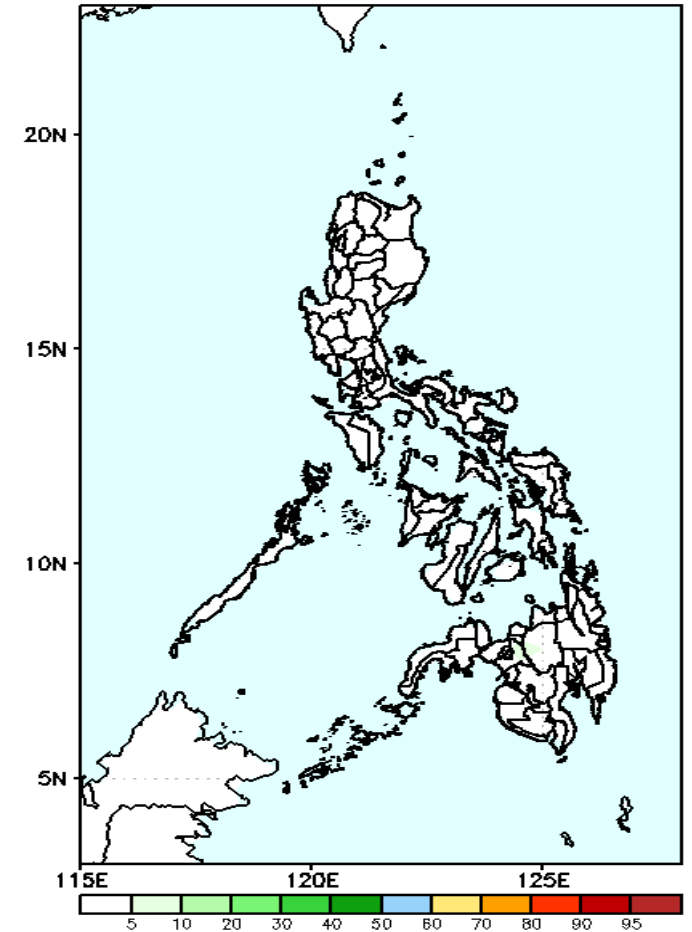
Less probability of rainfall to exceed 100mm in most parts of the country during the forecast period.

GEFS Week-2 Exceedance Prob. > 150mm
Valid: 20210408 – 20210414



Less probability of rainfall to exceed 150mm in most parts of the country during the forecast period.

GEFS Week-2 Exceedance Prob. > 200mm
Valid: 20210408 – 20210414

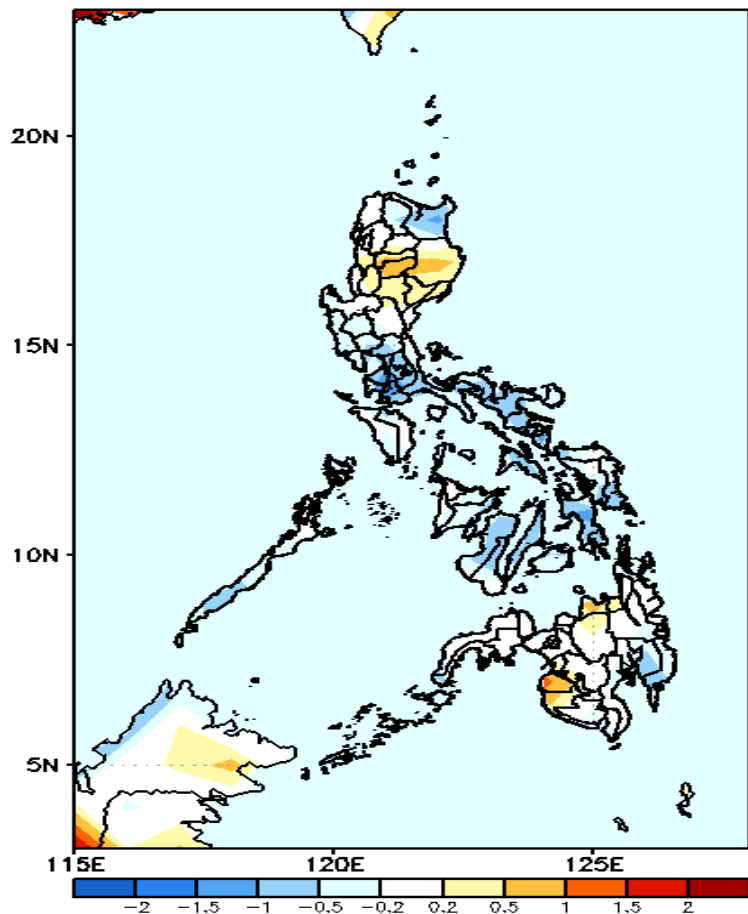


Less probability of rainfall to exceed 200mm in most parts of the country during the forecast period.



GEFS Week-1 & 2 Forecasts: T2m Anomaly

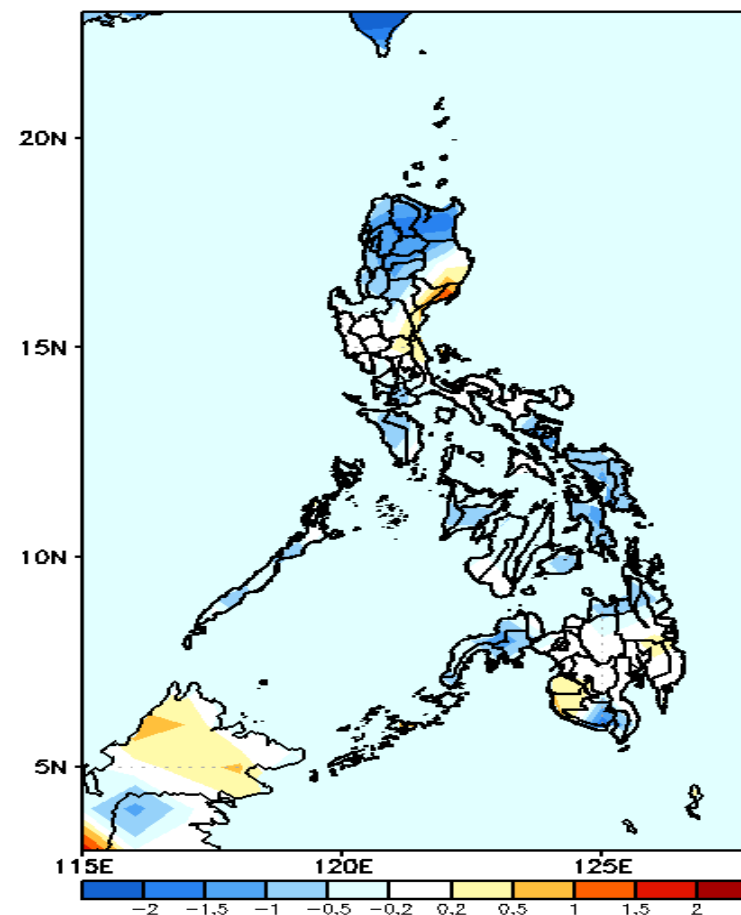
GEFS Week-1 T2m Anomaly
Valid: 20210401 – 20210407



2m Temperature Week 1: April 01-07, 2021

Slightly warmer to warmer than average surface air temperatures will likely experience in most parts of CAR, Isabela, Misamis Oriental and Maguindanao while average to slightly cooler air temperatures for the rest of the country during the forecast period.

GEFS Week-2 T2m Anomaly
Valid: 20210408 – 20210414



2m Temperature Week 2: April 08-14, 2021

Cooler than average surface air temperature will likely experience in most parts of Region 1, CAR, Cagayan, Leyte & Samar Provinces while average to slightly warmer than average temperature for the rest of the country during the forecast period.