



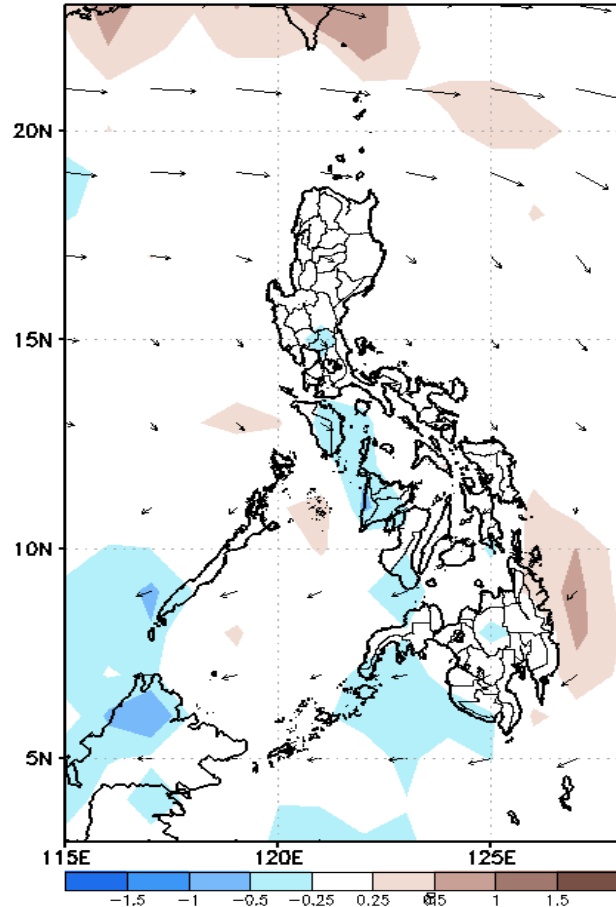
Week 1 & Week 2 Forecast for the Philippines using GEFS Model



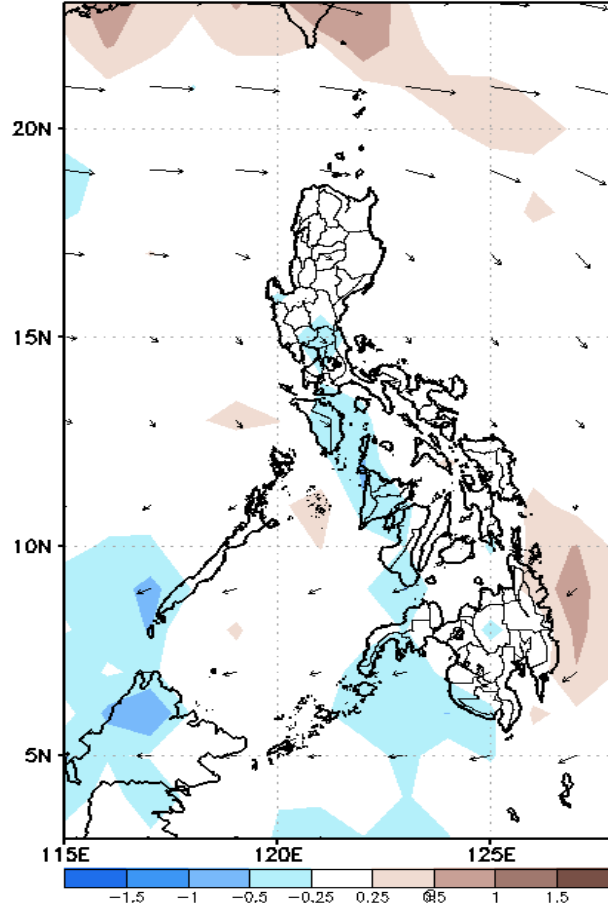
GEFS Week-1 Forecasts: Divergence & Wind Anomaly

Week 1: March 01-07, 2021

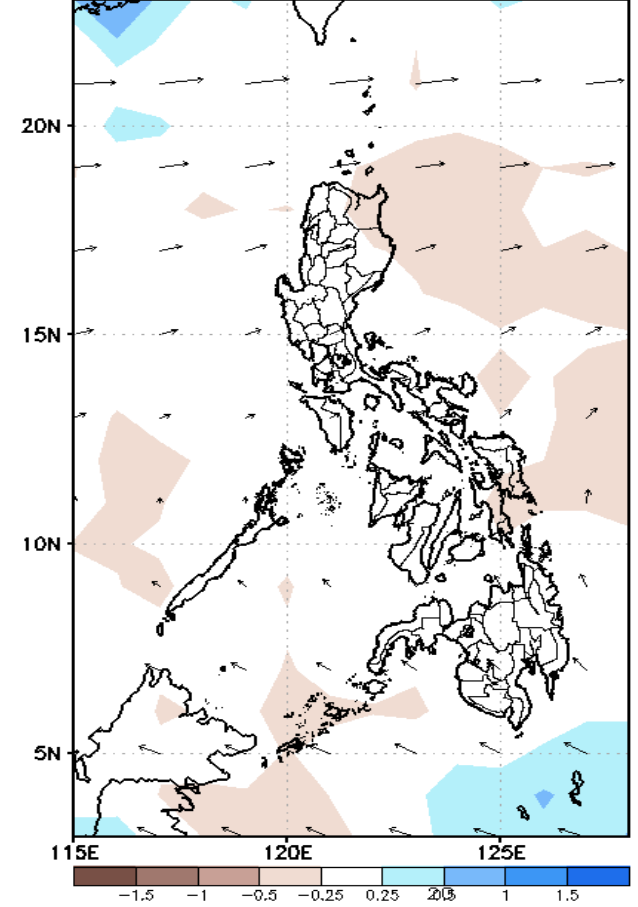
GEFS Week-1 850-hPa Divergence and Wind Anom. Valid: 20210301 - 20210307



GEFS Week-1 700-hPa Divergence and Wind Anom. Valid: 20210301 - 20210307



GEFS Week-1 200-hPa Divergence and Wind Anom. Valid: 20210301 - 20210307

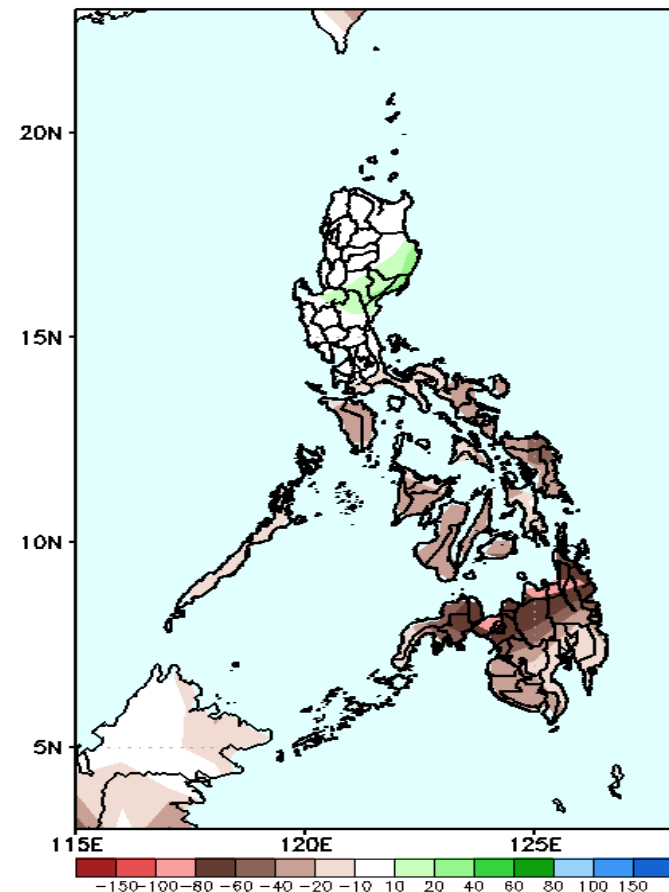


Upper and low level Divergence suggest less likelihood of precipitation in most parts of the country. Easterlies affecting most parts of the country. Northeast Monsoon affecting Extreme Northern Luzon during the forecast period.

Precipitation Anomaly and Exceedance Probability > 25/50 mm

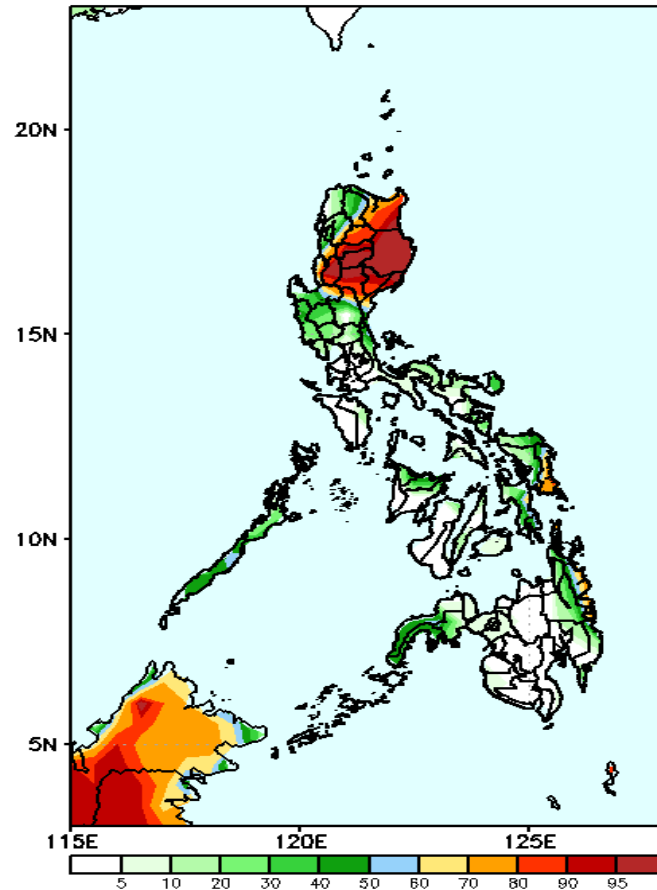
Week 1: March 01-07, 2021

GEFS Week-1 Precip Anomaly
Valid: 20210301 - 20210307



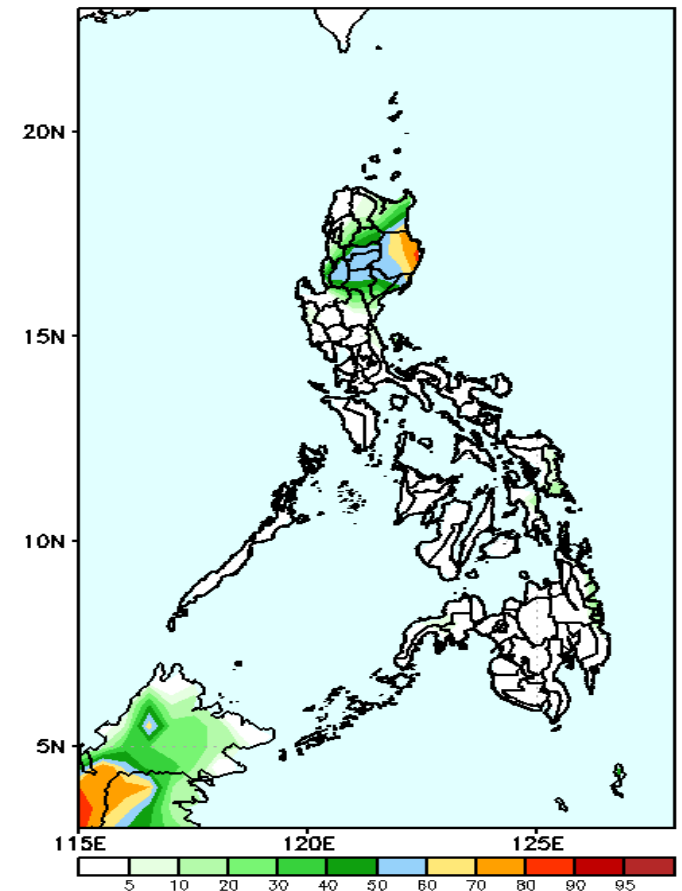
Rainfall deficit of 40-80mm is expected in most parts of Southern Luzon and Visayas & up to 100mm rainfall deficit in Mindanao.

GEFS Week-1 Exceedance Prob. > 25mm
Valid: 20210301 - 20210307



High probability of rainfall to exceed 25mm in Cagayan Valley, Kalinga, Mountain Province, Benguet and Ifugao while less likely for rest of the country during the forecast period.

GEFS Week-1 Exceedance Prob. > 50mm
Valid: 20210301 - 20210307

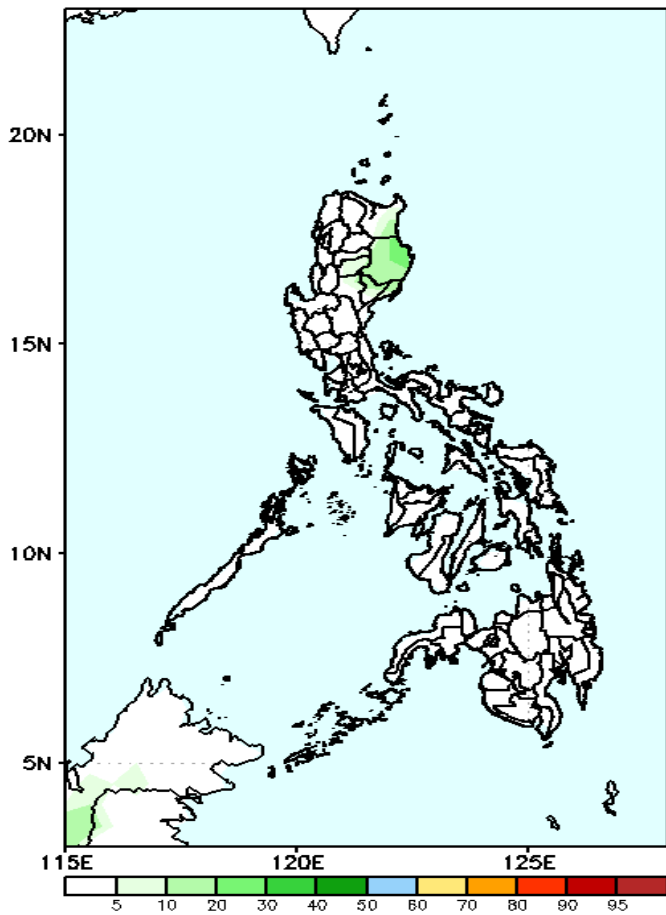


Less probability of rainfall to exceed 50mm in most parts of the country except eastern part of Isabela where 50mm of rainfall is most likely during the forecast period.

Exceedance Probability > 100/150/200 mm

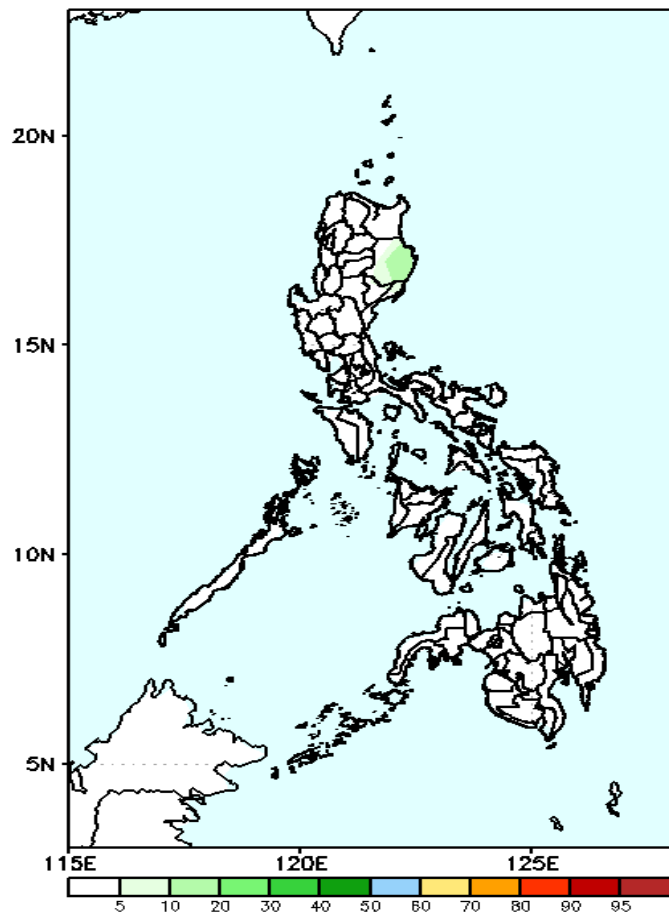
Week 1: March 01-07, 2021

GEFS Week-1 Exceedance Prob. > 100mm
Valid: 20210301 – 20210307



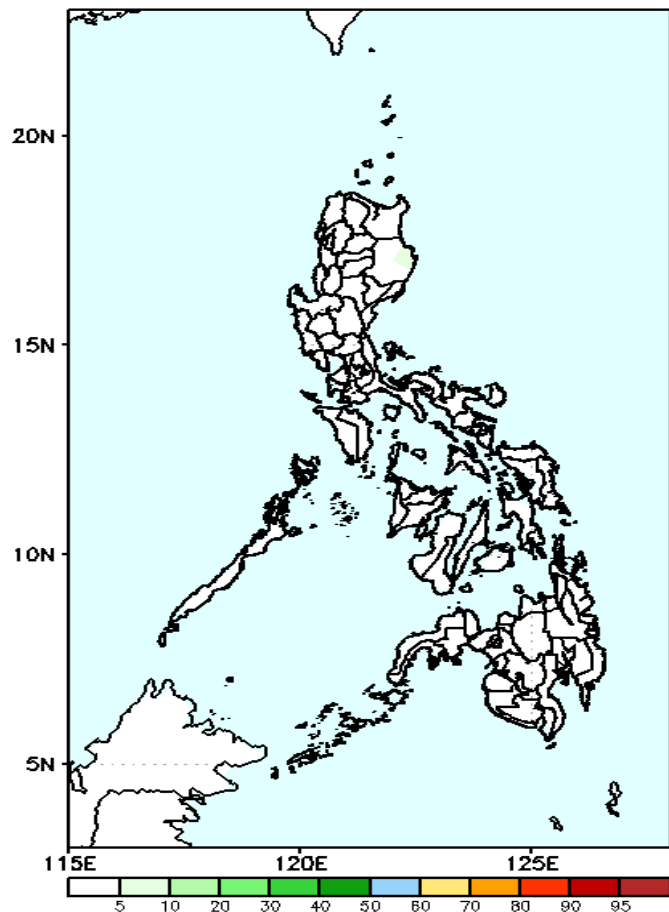
Less probability of rainfall to exceed 100mm in most parts of the country during the forecast period.

GEFS Week-1 Exceedance Prob. > 150mm
Valid: 20210301 – 20210307



Less probability of rainfall to exceed 150mm in most parts of the country during the forecast period.

GEFS Week-1 Exceedance Prob. > 200mm
Valid: 20210301 – 20210307

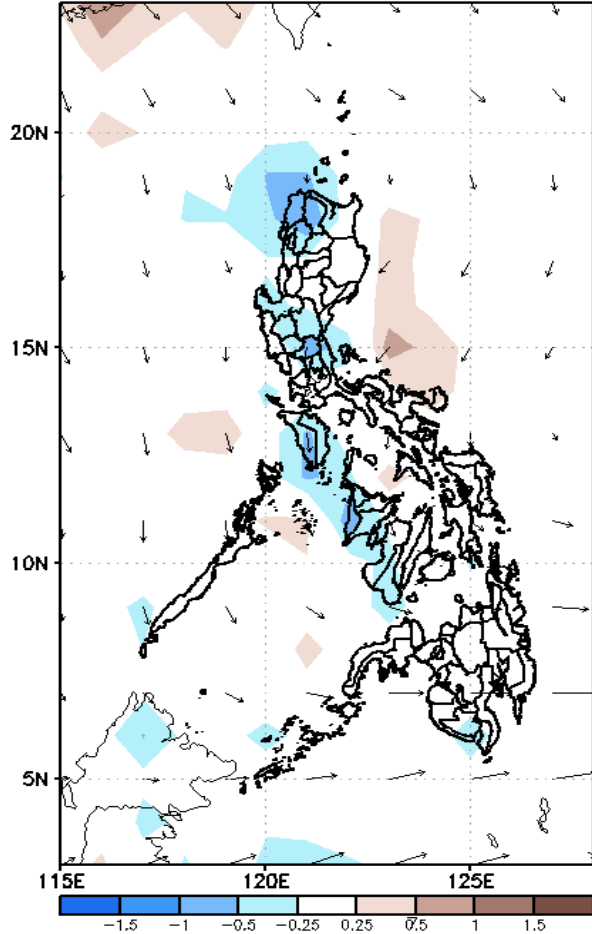


Less probability of rainfall to exceed 200mm in most parts of the country during the forecast period.

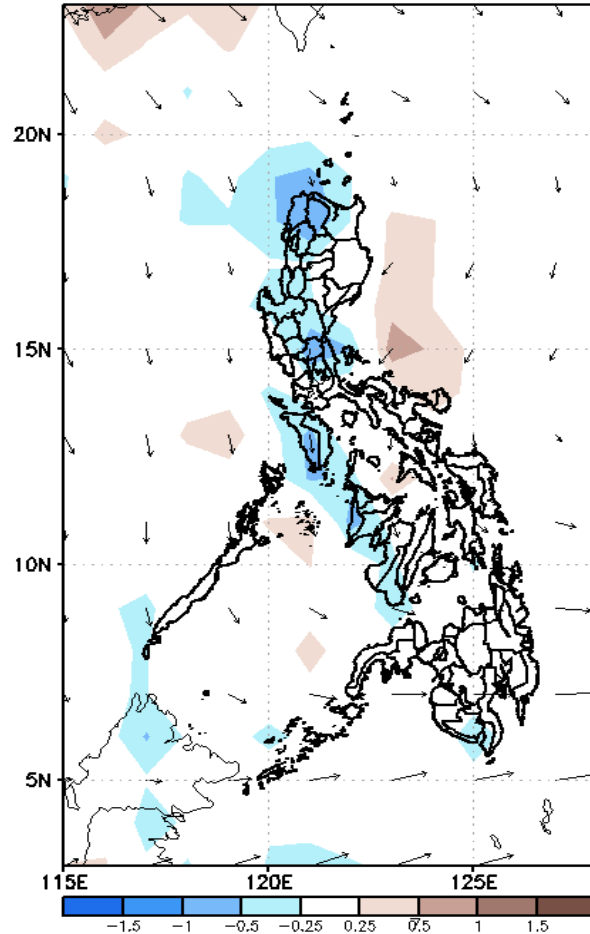
GEFS Week-2 Forecasts: Divergence & Wind Anomaly

Week 2: March 08-14, 2021

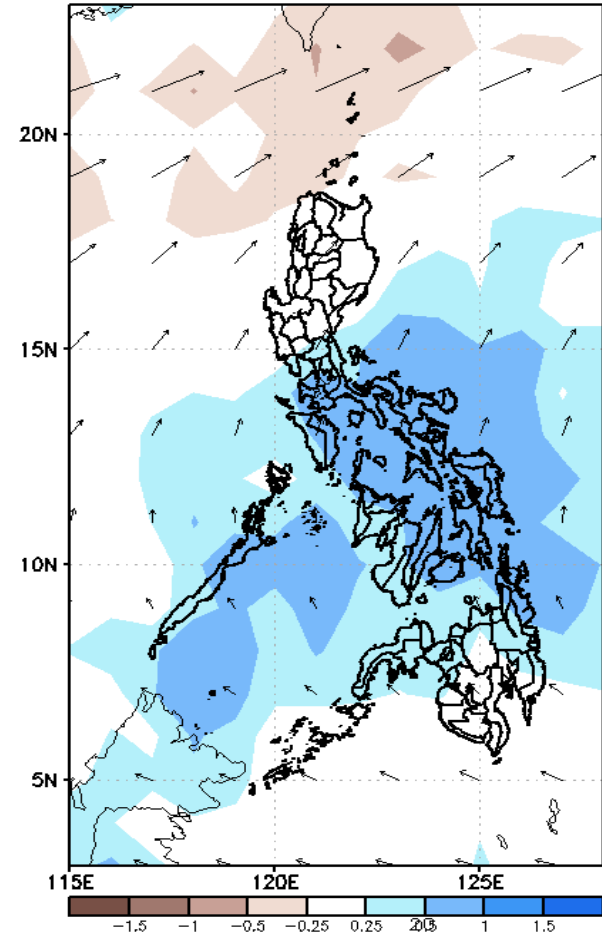
GEFS Week-2 850-hPa Divergence and Wind Anom
Valid: 20210308 - 20210314



GEFS Week-2 700-hPa Divergence and Wind Anom
Valid: 20210308 - 20210314



GEFS week-2 200-hPa Divergence and Wind Anom
Valid: 20210308 - 20210314

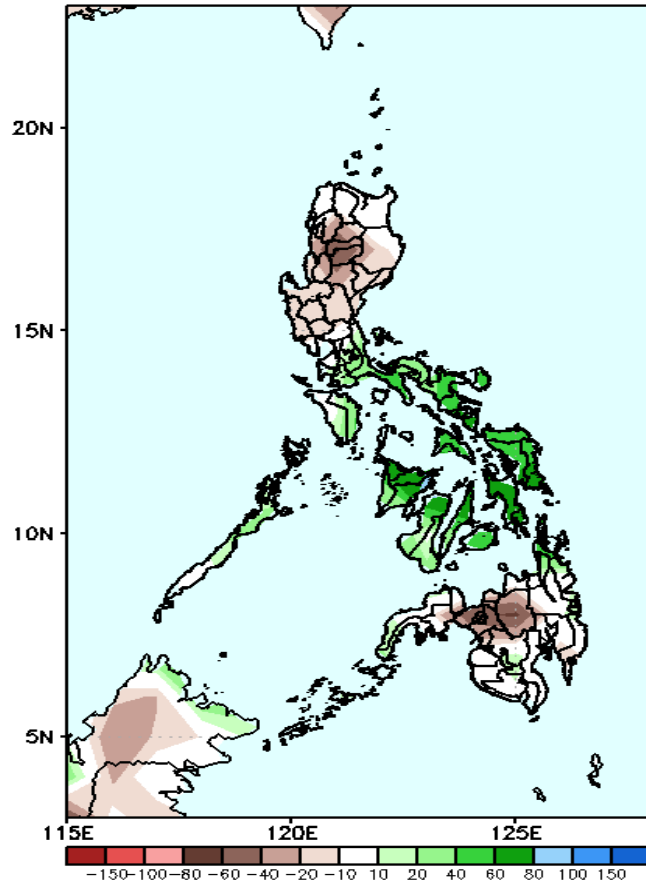


Upper and low level Divergence suggest likelihood of precipitation in Extreme Northern Luzon and most parts of Visayas and Mindanao. Northeast Monsoon affecting most parts of Luzon and eastern sections of Visayas and Mindanao during the forecast period.

Precipitation Anomaly and Exceedance Probability > 25/50 mm

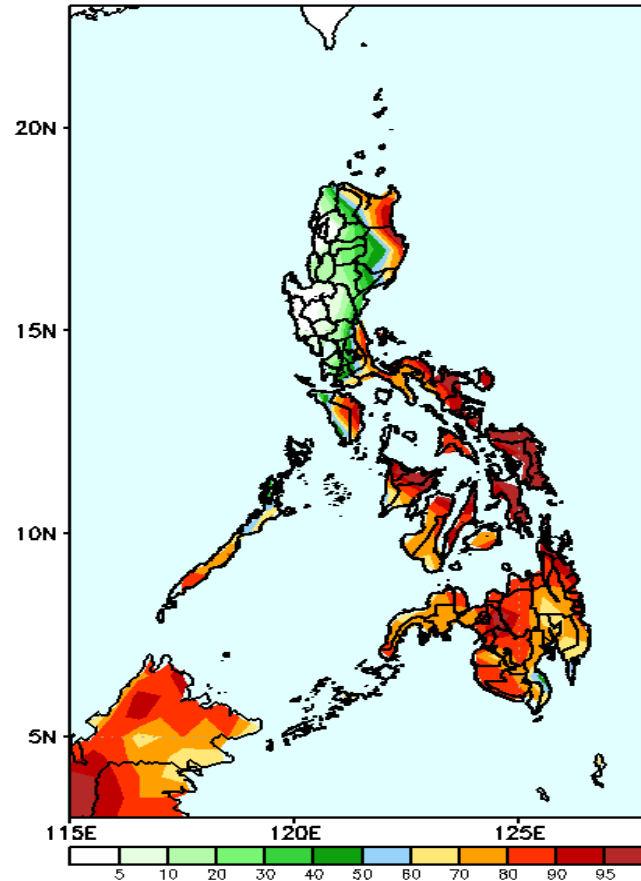
Week 2: March 08-14, 2021

GEFS Week-2 Precip Anomaly
Valid: 20210308 - 20210314



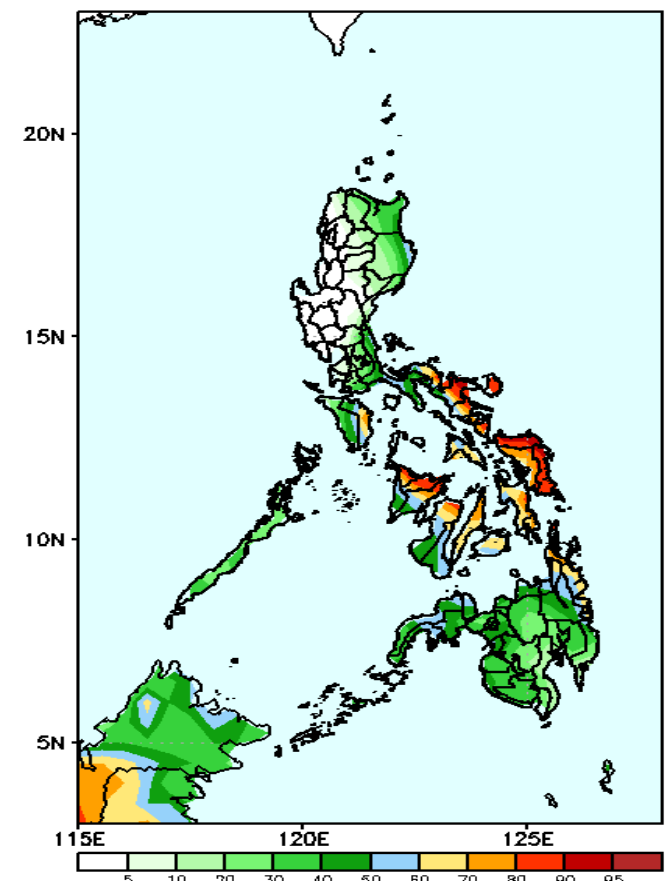
Rainfall deficit of 20-60mm in most parts of Cagayan Valley, Central Luzon & Northern Mindanao is expected while increase of rainfall of up to 80mm is most likely in Southern Luzon and Visayas.

GEFS Week-2 Exceedance Prob. > 25mm
Valid: 20210308 - 20210314



High probability of rainfall to exceed 25mm in most parts of Cagayan, Isabela, Quezon, most of Bicol region, MIMAROPA and most parts of Visayas and Mindanao while less likely for the remaining parts of the country during the forecast period.

GEFS Week-2 Exceedance Prob. > 50mm
Valid: 20210308 - 20210314

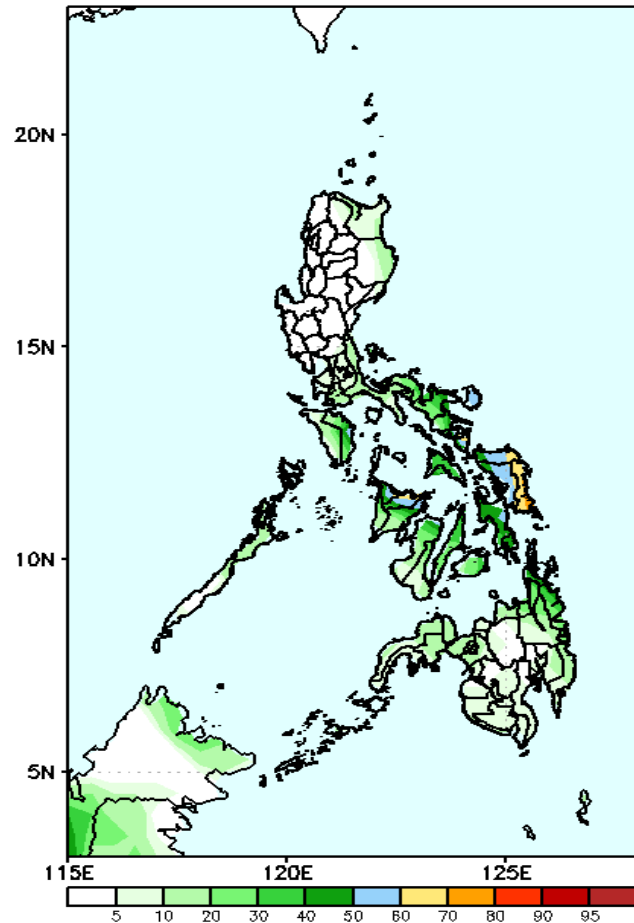


High probability of rainfall to exceed 50mm in most parts of Bicol region and most parts of Visayas while less likely for the rest of the country during the forecast period.

Exceedance Probability > 100/150/200 mm

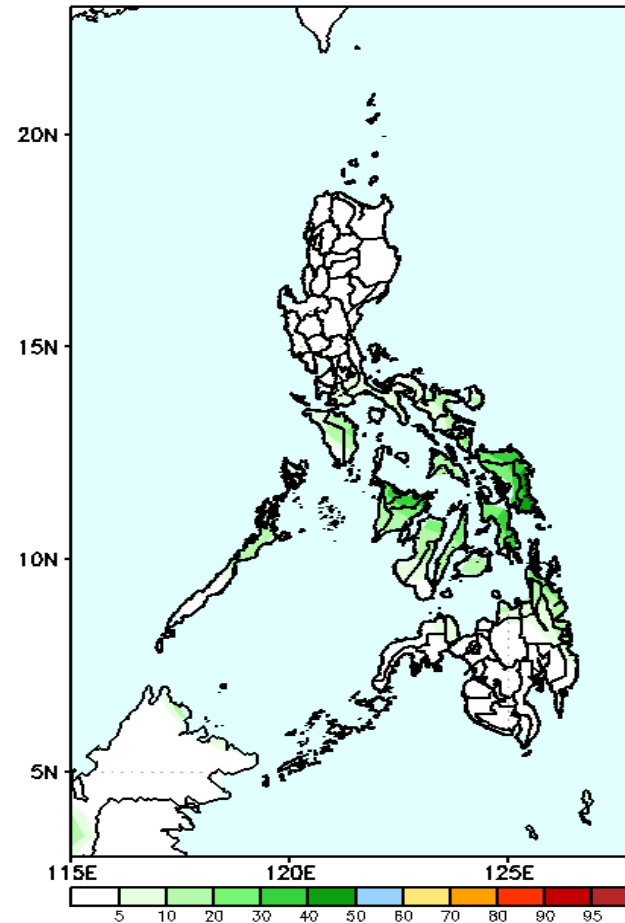
Week 2: March 08-14, 2021

GEFS Week-2 Exceedance Prob. > 100mm
Valid: 20210308 – 20210314



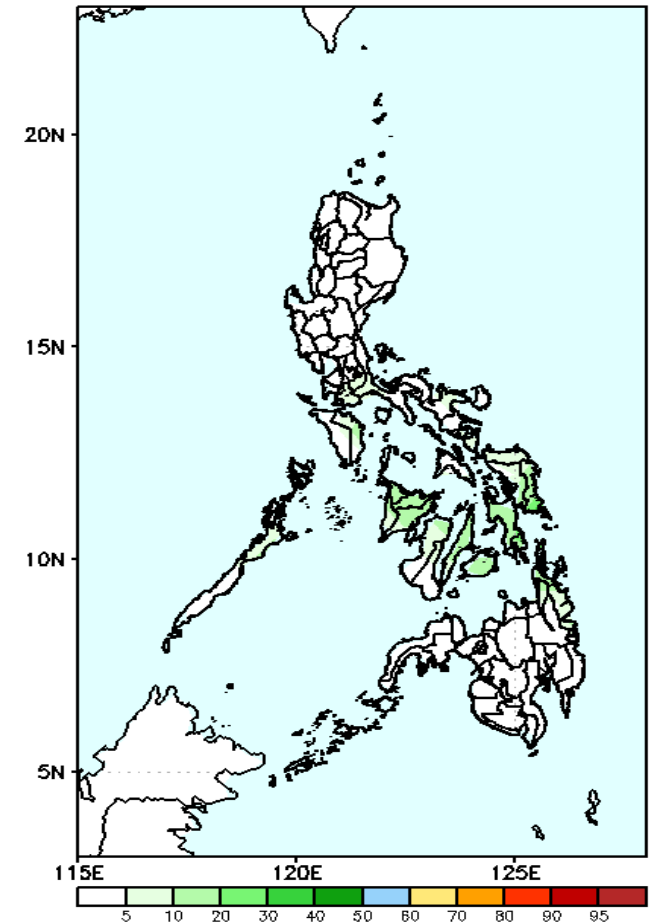
Less probability of rainfall to exceed 100mm in most parts of the country except in Eastern Samar where there is high probability during the forecast period

GEFS Week-2 Exceedance Prob. > 150mm
Valid: 20210308 – 20210314



Less probability of rainfall to exceed 150mm in most parts of the country during the forecast period.

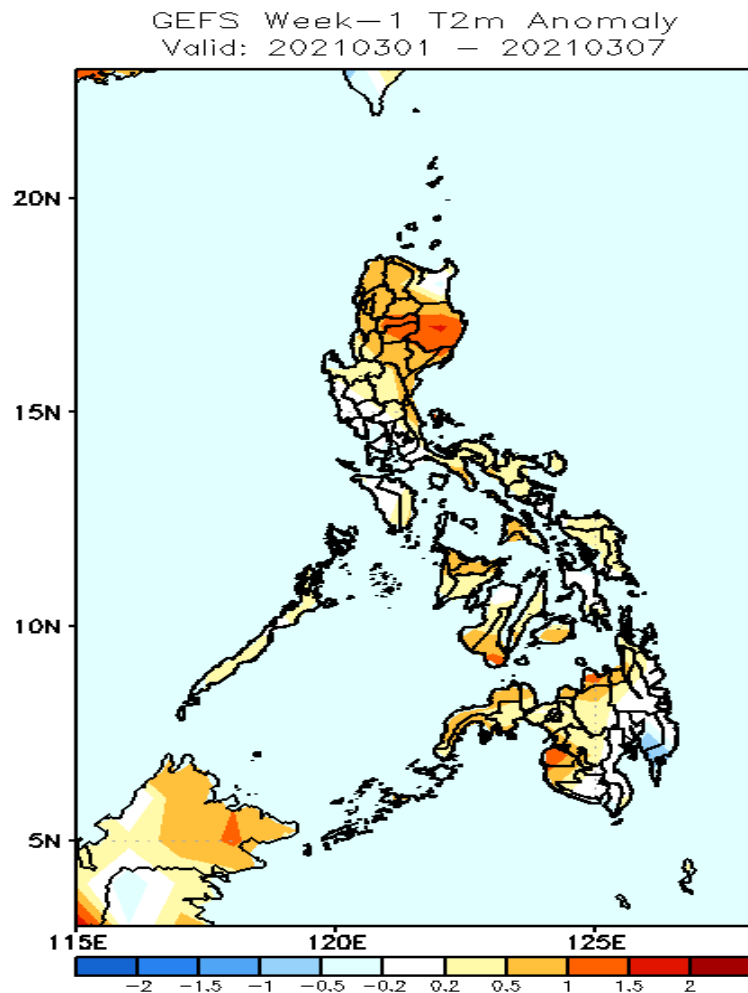
GEFS Week-2 Exceedance Prob. > 200mm
Valid: 20210308 – 20210314



Less probability of rainfall to exceed 200mm in most parts of the country during the forecast period.

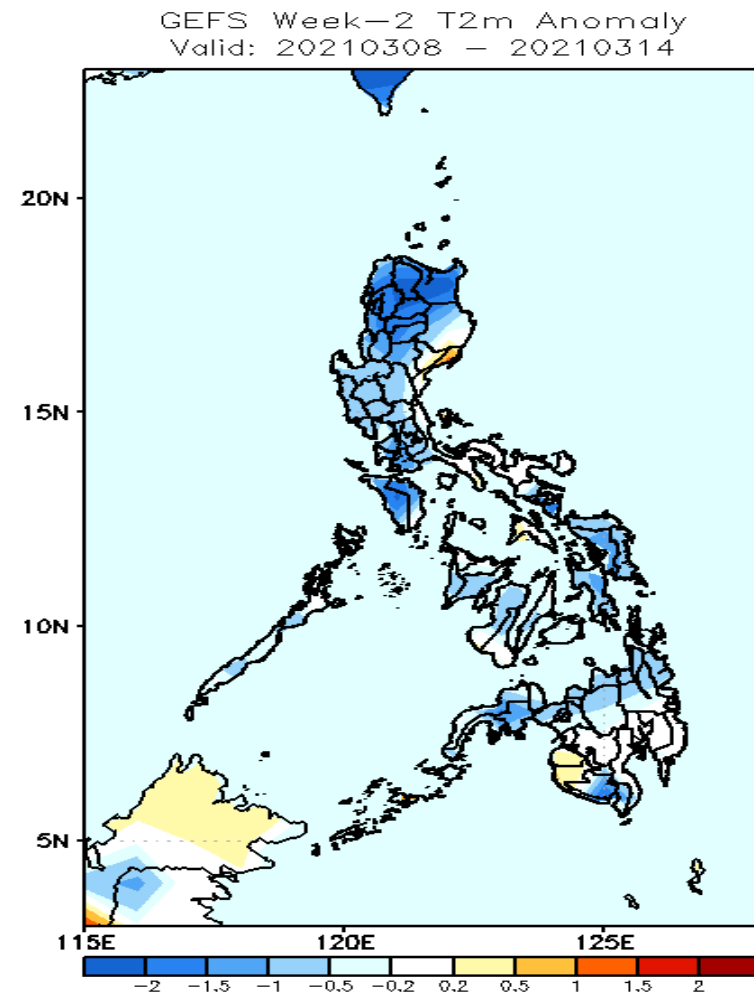


GEFS Week-1 & 2 Forecasts: T2m Anomaly



2m Temperature Week 1: March 01-07, 2021

Slightly warmer to warmer than average surface air temperature is expected in most parts of the country during the forecast period.



2m Temperature Week 2: March 08-14, 2021

Slightly cooler to cooler than average surface air temperature is expected in most parts of the country during the forecast period.