



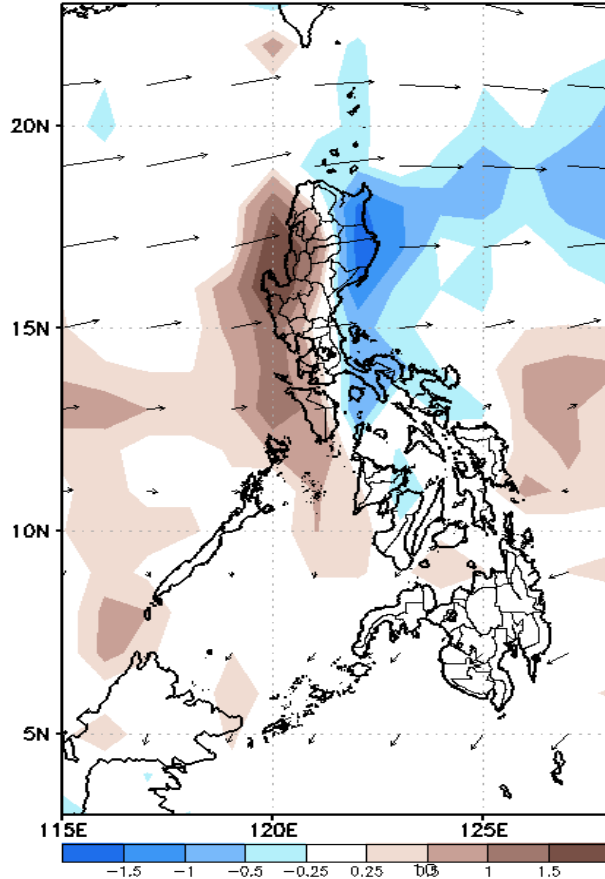
# Week 1 & Week 2 Forecast for the Philippines using GEFS Model



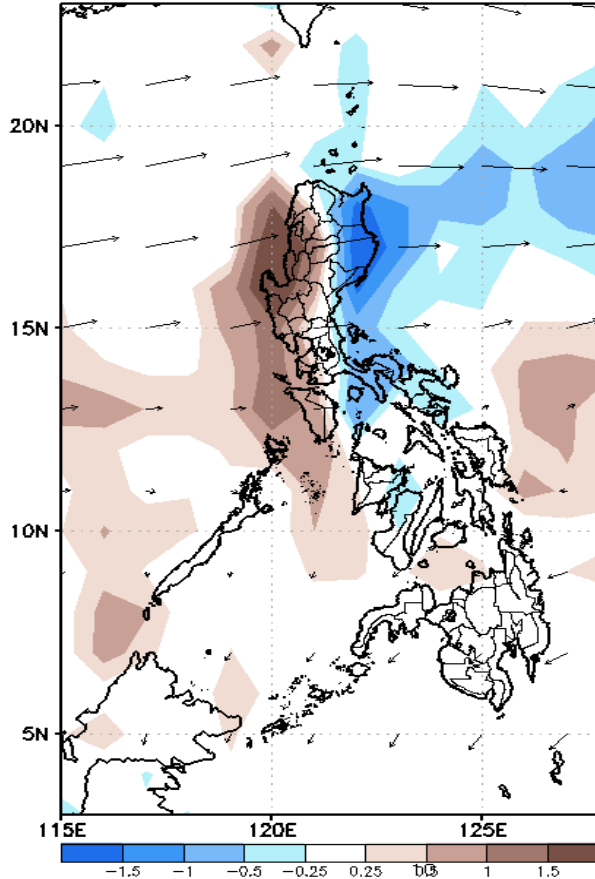
# GEFS Week-1 Forecasts: Divergence & Wind Anomaly

**Week 1: Aug 02-08, 2021**

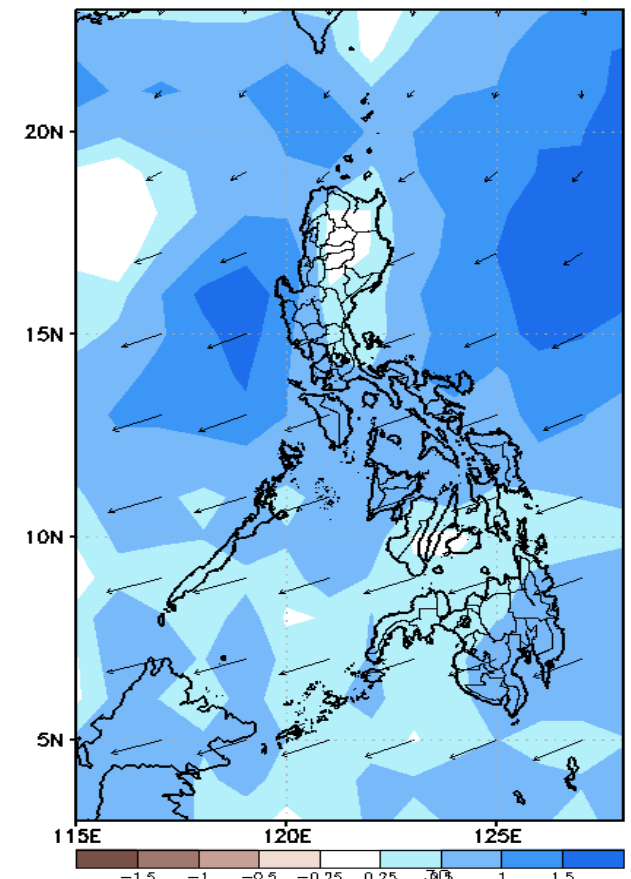
GEFS Week-1 850-hPa Divergence and Wind Anom  
Valid: 20210802 - 20210808



GEFS Week-1 700-hPa Divergence and Wind Anom  
Valid: 20210802 - 20210808



GEFS Week-1 200-hPa Divergence and Wind Anom  
Valid: 20210802 - 20210808

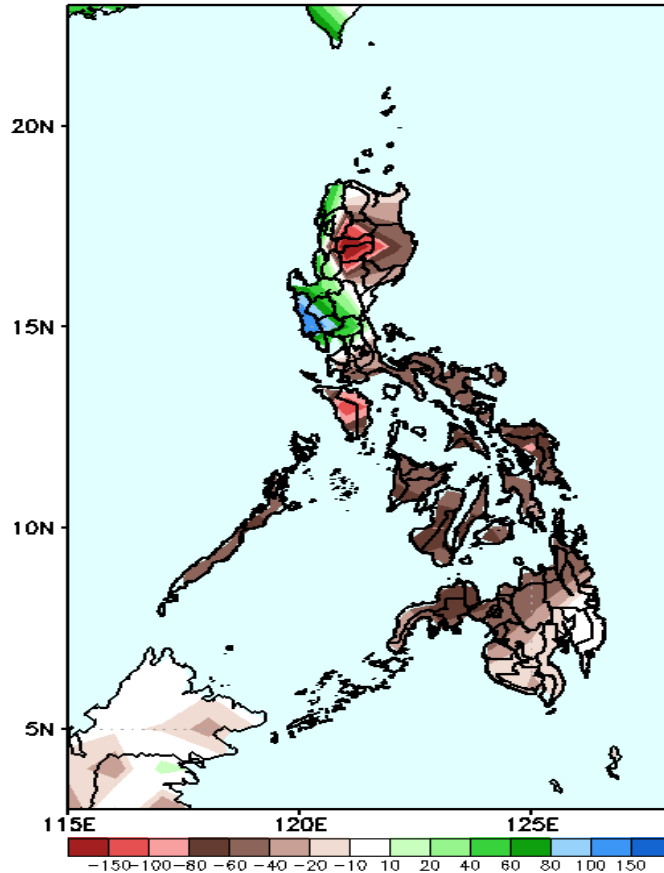


Upper and low level Divergence suggest likelihood of precipitation in Western and Southern Luzon and most parts of Visayas and Mindanao. Southwest monsoon affecting the Western sections of Luzon and Visayas. Easterlies affecting the rest of the country. Attributing to light to moderate rains especially in the Western sections of Luzon and Visayas during the forecast period.

# Precipitation Anomaly and Exceedance Probability > 25/50 mm

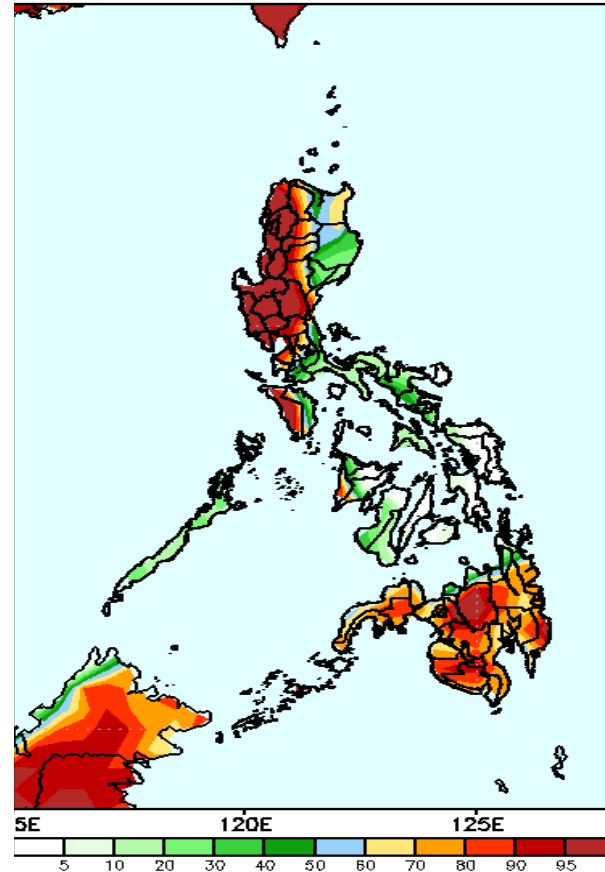
Week 1: Aug 02-08, 2021

GEFS Week-1 Precip Anomaly  
Valid: 20210802 - 20210808



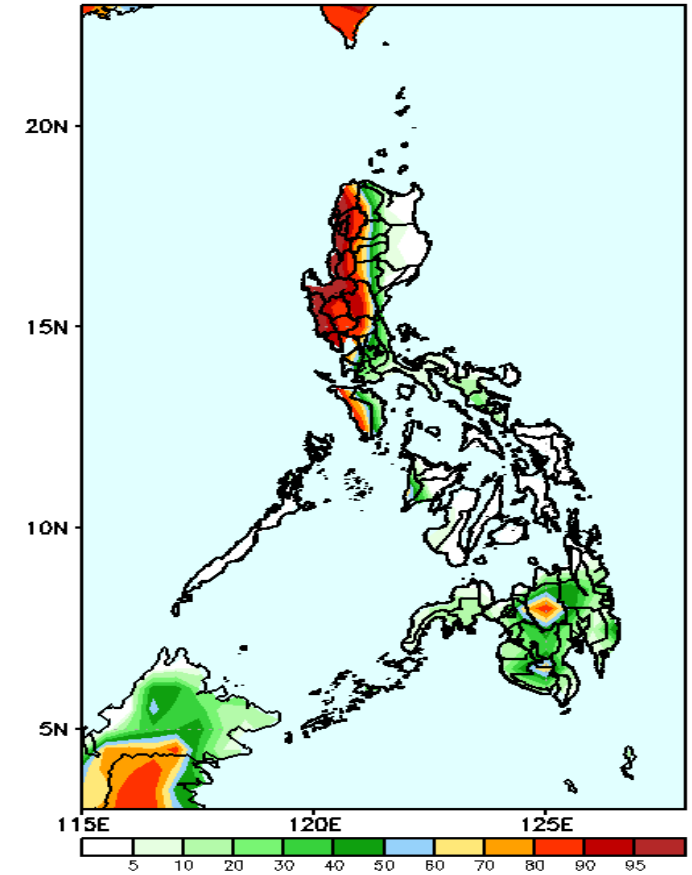
Rainfall deficit of 80-150mm is expected in most parts of the country (especially in Cordillera Region & Mindoro) except in Ilocos Region and Central Luzon where there is 40-150mm increase of rainfall during the forecast period.

GEFS Week-1 Exceedance Prob. > 25mm  
Valid: 20210802 - 20210808



High probability of rainfall to exceed 25mm in western and central parts of Luzon and most parts of Mindanao while less likely for the rest of the country during the forecast period.

GEFS Week-1 Exceedance Prob. > 50mm  
Valid: 20210802 - 20210808

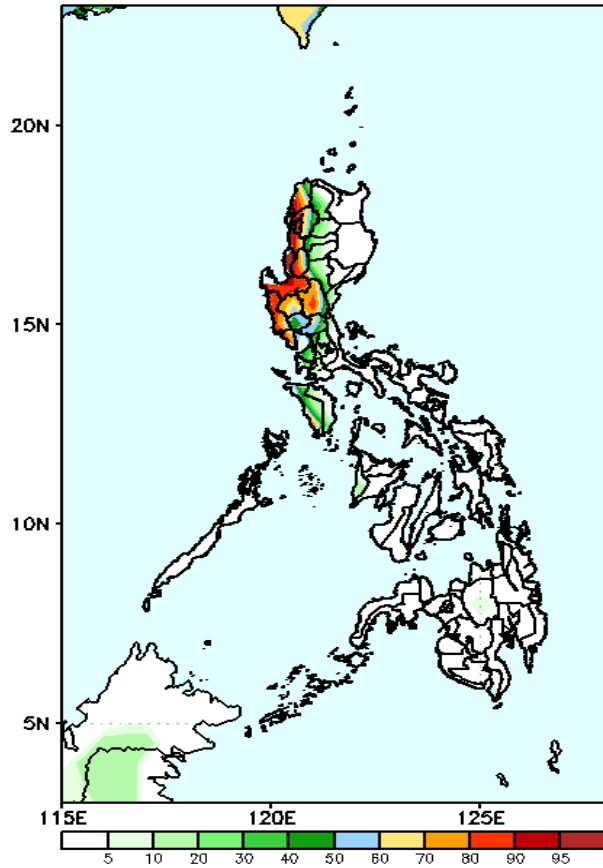


High probability of rainfall to exceed 50mm in western & central parts of Luzon and Bukidnon while less likely for the rest of the country during the forecast period.

# Exceedance Probability > 100/150/200 mm

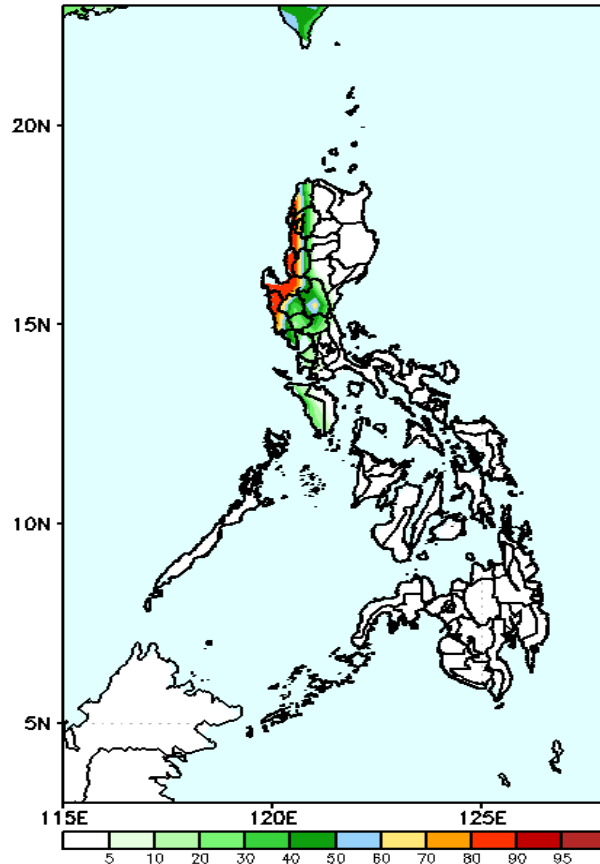
## Week 1: Aug 02-08, 2021

GEFS Week-1 Exceedance Prob. > 100mm  
Valid: 20210802 – 20210808



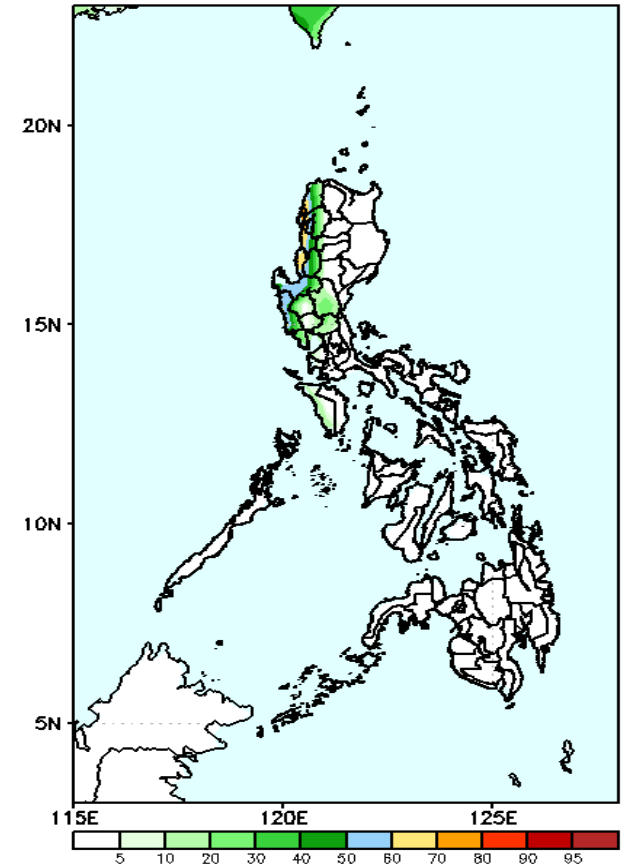
High probability of rainfall to exceed 100mm in Ilocos Region and most parts of Central Luzon while less likely for the rest of the country during the forecast period.

GEFS Week-1 Exceedance Prob. > 150mm  
Valid: 20210802 – 20210808



60-90% probability of rainfall to exceed 150mm in Ilocos Region and Zambales while less likely for the rest of the country during the forecast period.

GEFS Week-1 Exceedance Prob. > 200mm  
Valid: 20210802 – 20210808



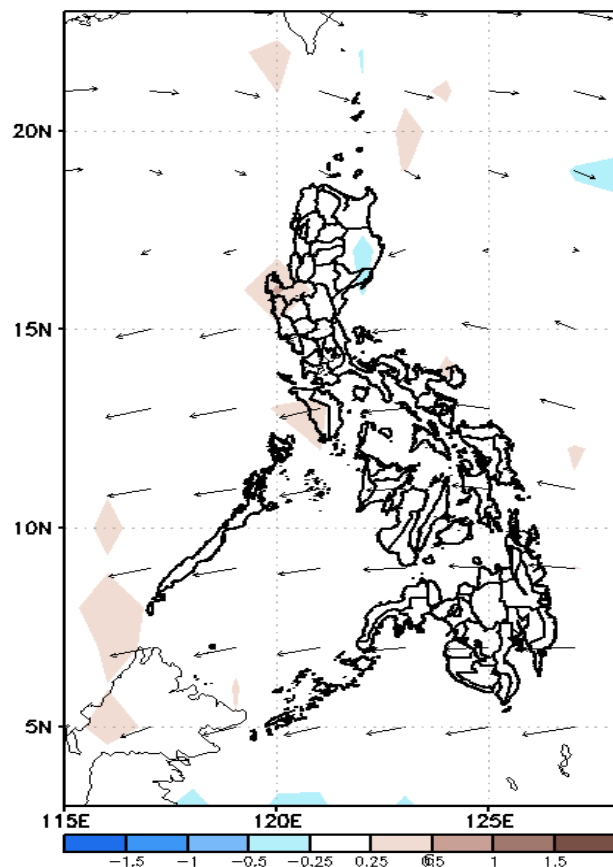
Less probability of rainfall to exceed 200mm in most parts of the country is expected during the forecast period.



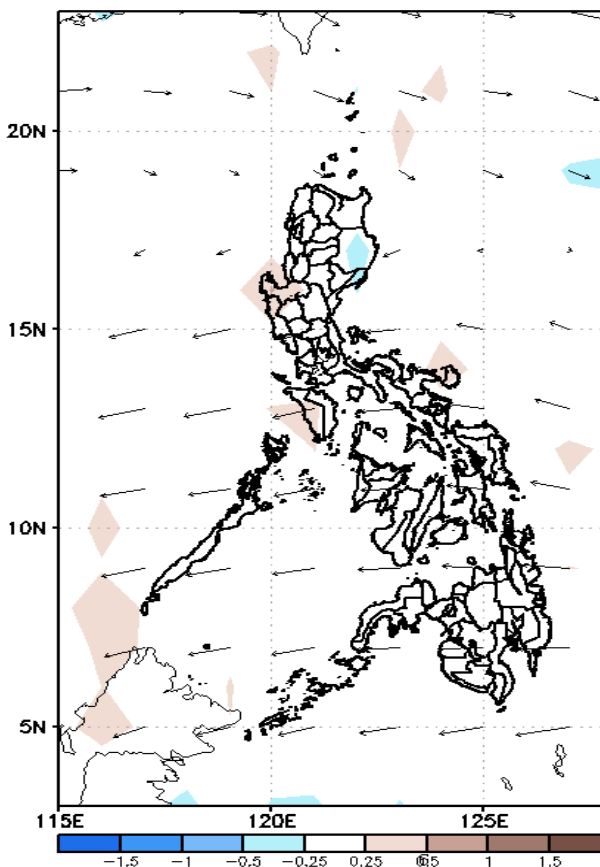
# GEFS Week-2 Forecasts: Divergence & Wind Anomaly

Week 2: Aug 09-15, 2021

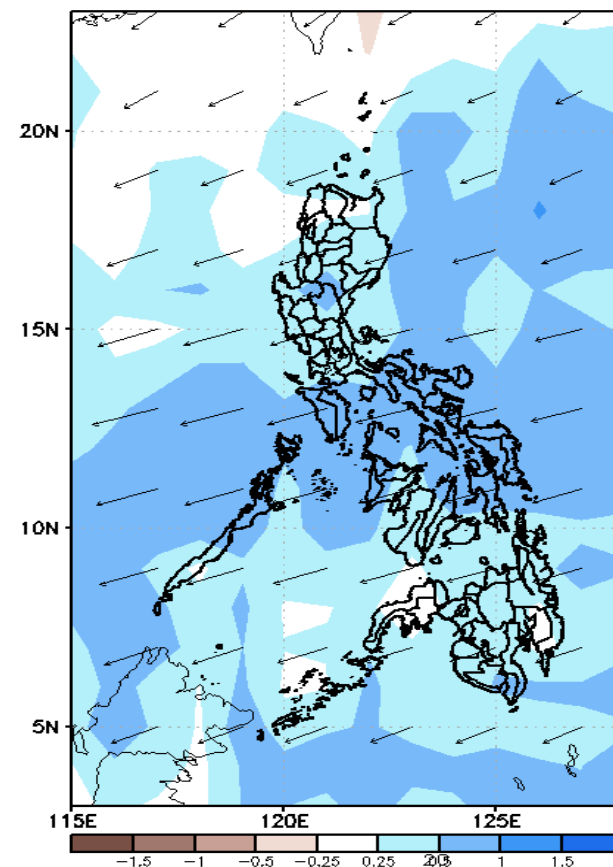
GEFS Week-2 850-hPa Divergence and Wind Anom  
Valid: 20210809 - 20210815



GEFS Week-2 700-hPa Divergence and Wind Anom  
Valid: 20210809 - 20210815



GEFS week-2 200-hPa Divergence and Wind Anom  
Valid: 20210809 - 20210815

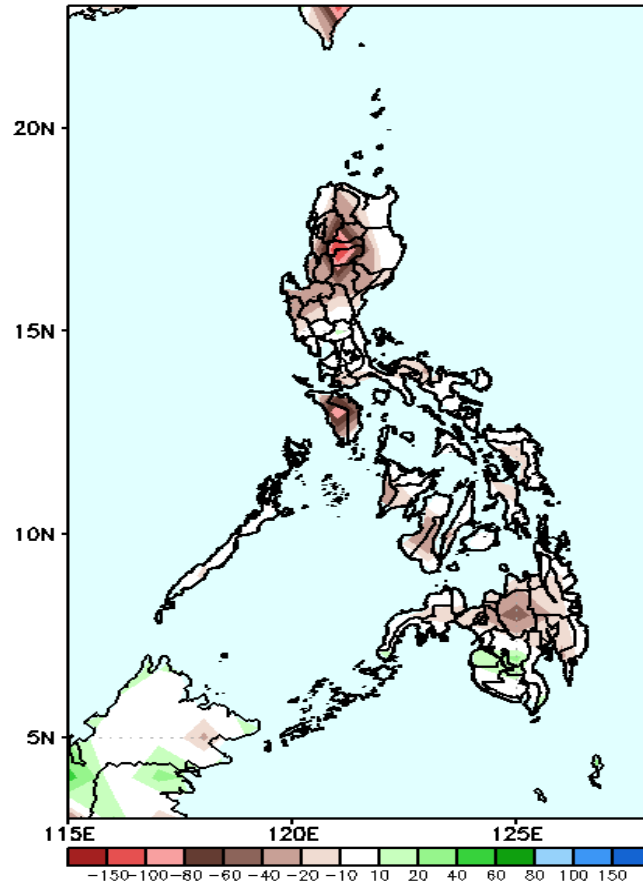


Upper and low level Divergence suggest likelihood of precipitation in most parts of the country. Southwest monsoon affecting portions of the Western Luzon while Easterlies affecting most part of the country. Moderate to Severe Thunderstorm will be likely during the forecast period.

# Precipitation Anomaly and Exceedance Probability > 25/50 mm

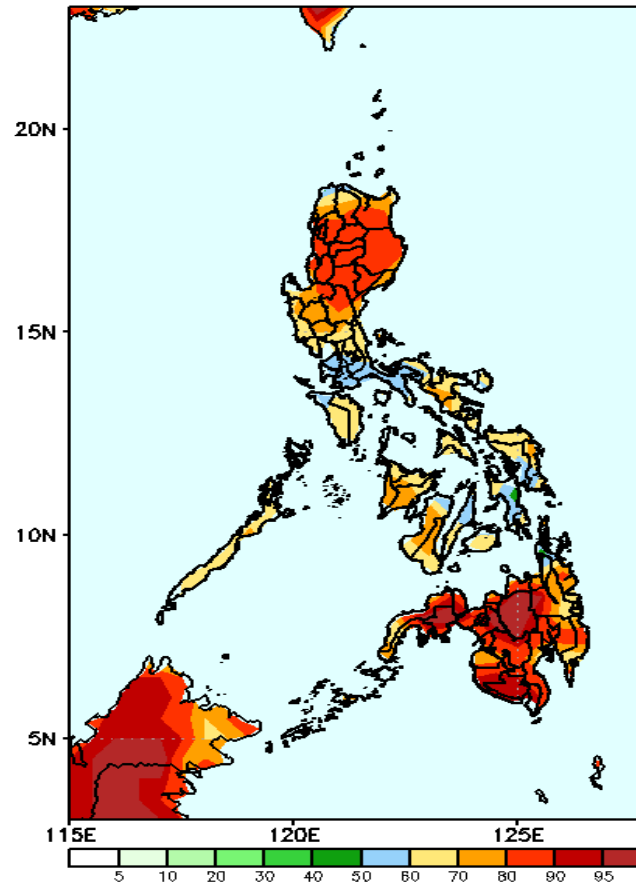
**Week 2: Aug 09-15, 2021**

GEFS Week-2 Precip Anomaly  
Valid: 20210809 – 20210815



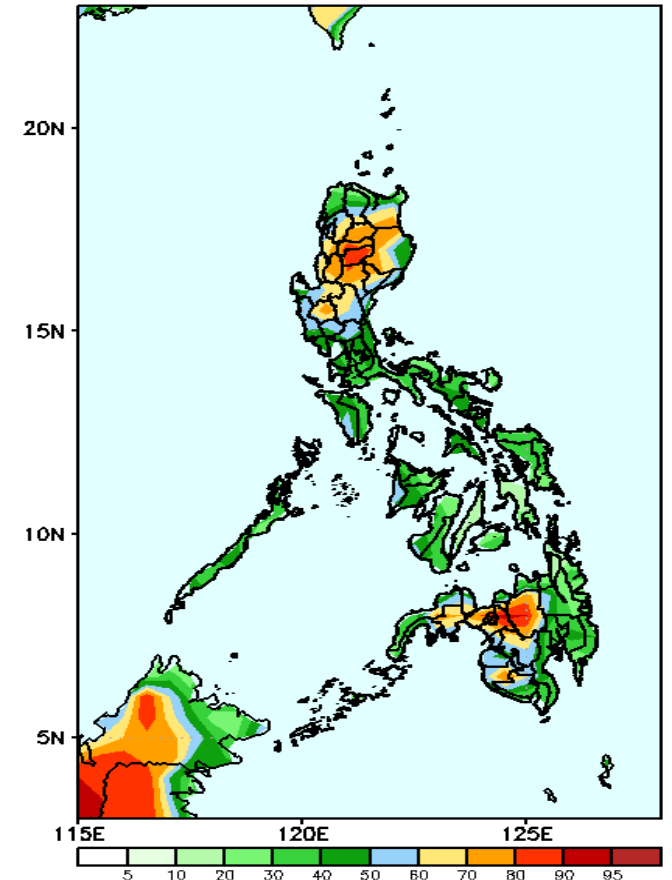
Rainfall deficit of 40-100mm is expected in most parts of the country especially in Cordillera Region and Mindoro during the forecast period.

GEFS Week-2 Exceedance Prob. > 25mm  
Valid: 20210809 – 20210815



High probability of rainfall to exceed 25mm in most parts of the country is expected during the forecast period

GEFS Week-2 Exceedance Prob. > 50mm  
Valid: 20210809 – 20210815



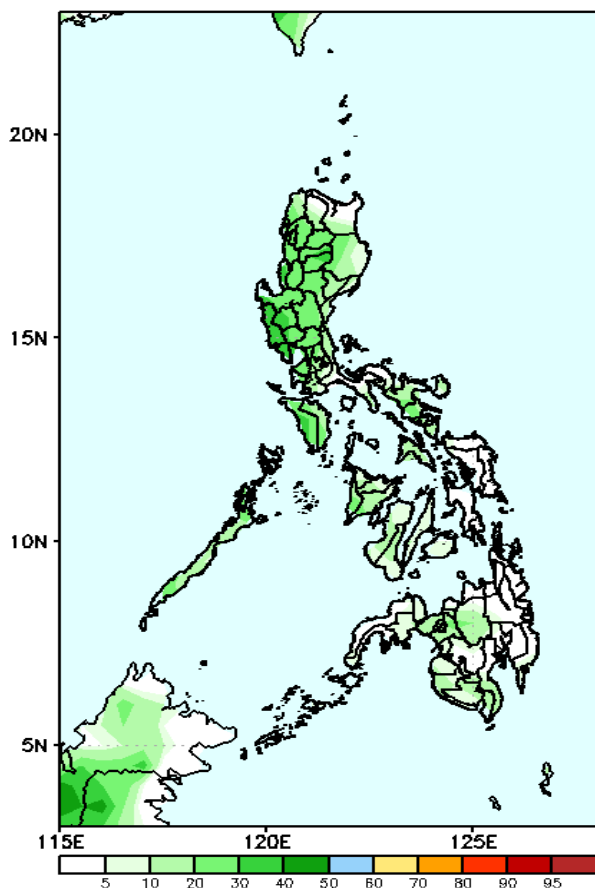
High probability of rainfall to exceed 50mm in most parts of Northern and Central Luzon while less likely for the rest of the country during the forecast period.



# Exceedance Probability > 100/150/200 mm

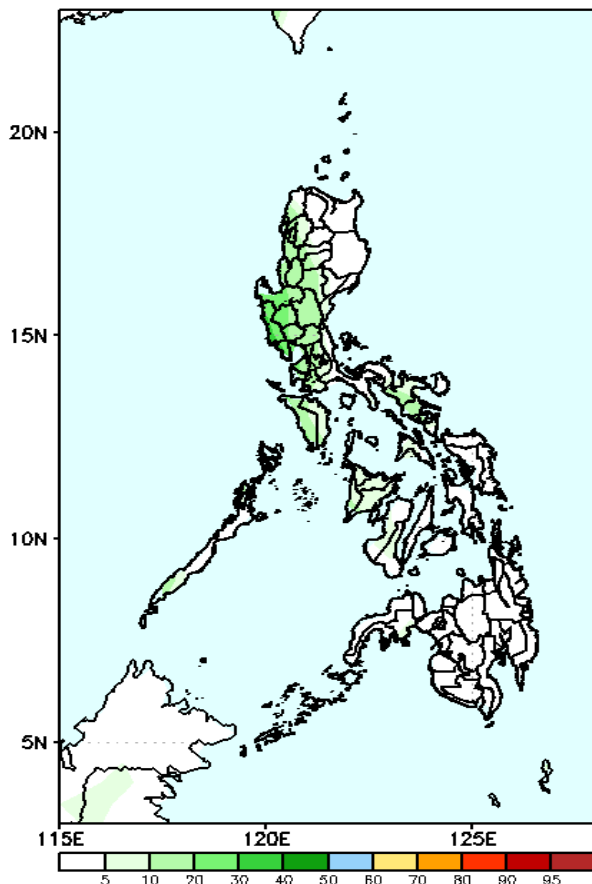
**Week 2: Aug 09-15, 2021**

GEFS Week-2 Exceedance Prob. > 100mm  
Valid: 20210809 – 20210815



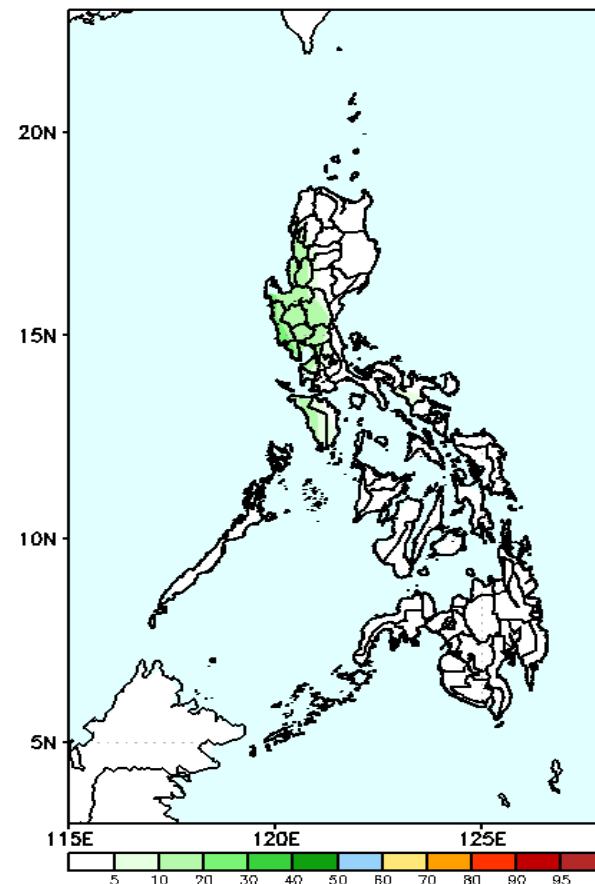
Less probability of rainfall to exceed 100mm in most parts of the country is expected during the forecast period.

GEFS Week-2 Exceedance Prob. > 150mm  
Valid: 20210809 – 20210815



Less probability of rainfall to exceed 150mm in most parts of the country is expected during the forecast period.

GEFS Week-2 Exceedance Prob. > 200mm  
Valid: 20210809 – 20210815

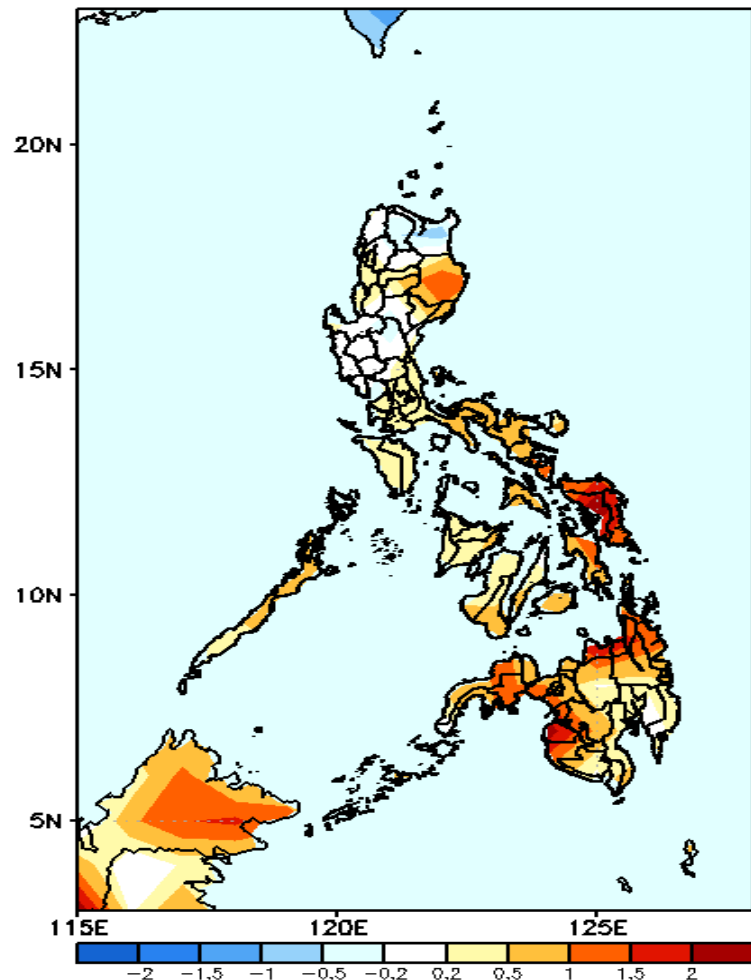


Less probability of rainfall to exceed 200mm in most parts of the country is expected during the forecast period.



# GEFS Week-1 & 2 Forecasts: T2m Anomaly

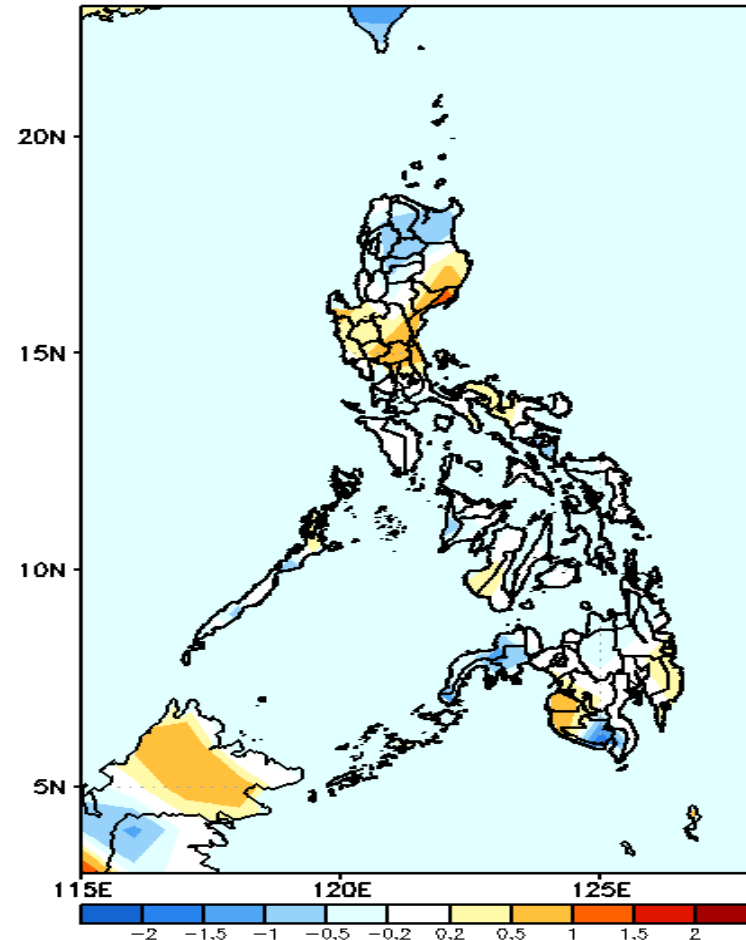
GEFS Week-1 T2m Anomaly  
Valid: 20210802 - 20210808



**2m Temperature Week 1: Aug 02-08, 2021**

Slightly warmer to warmer than average surface air temperature will likely experience in Isabela, Southern Luzon and in most parts of Visayas and Mindanao while average surface air temperature for the rest of Luzon during the forecast period.

GEFS Week-2 T2m Anomaly  
Valid: 20210809 - 20210815



**2m Temperature Week 2: Aug 09-15, 2021**

Slightly warmer to warmer than average surface air temperature will likely experience in most parts of eastern and central Luzon, Maguindanao and Sultan Kudarat while Average to slightly cooler than average surface air temperature for the rest of the country during the forecast period.