



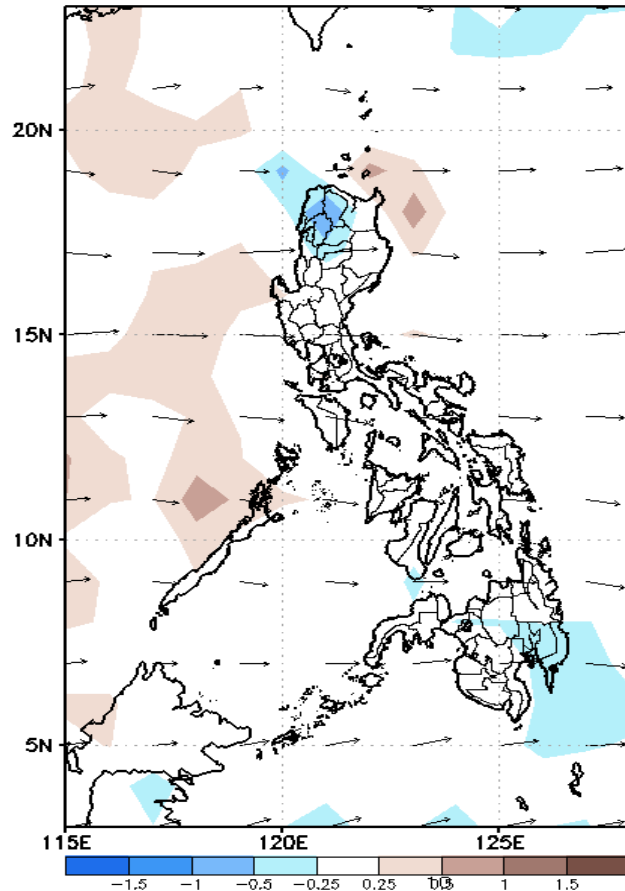
# Week 1 & Week 2 Forecast for the Philippines using GEFS Model



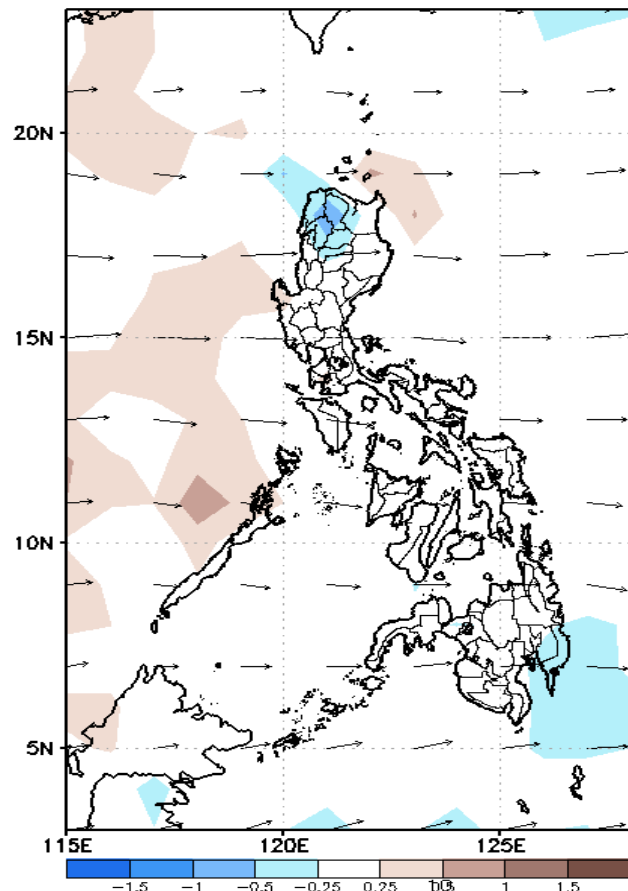
# GEFS Week-1 Forecasts: Divergence & Wind Anomaly

Week 1: Dec 02-08, 2021

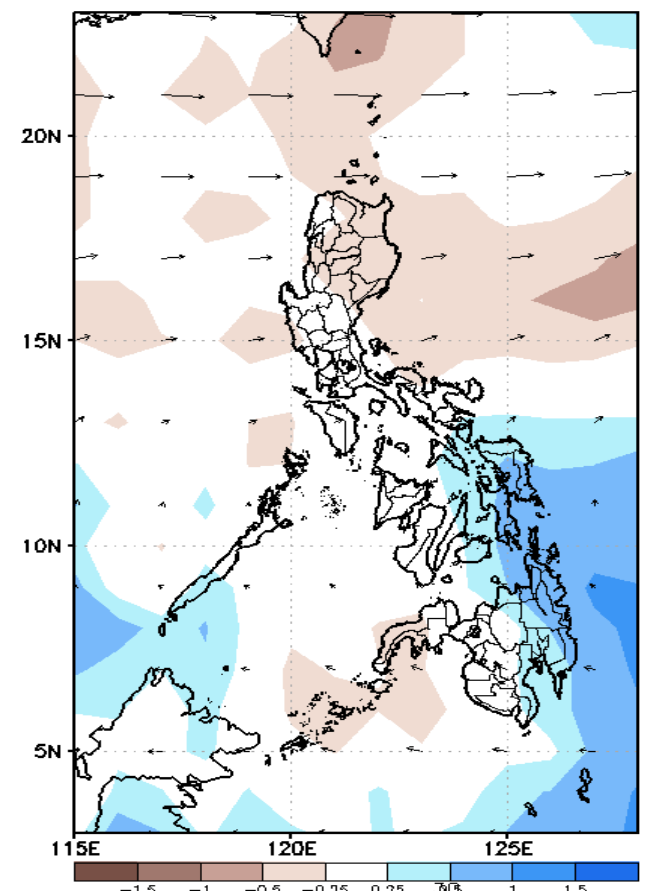
GEFS Week-1 850-hPa Divergence and Wind Anom  
Valid: 20211202 - 20211208



GEFS Week-1 700-hPa Divergence and Wind Anom  
Valid: 20211202 - 20211208



GEFS Week-1 200-hPa Divergence and Wind Anom  
Valid: 20211202 - 20211208

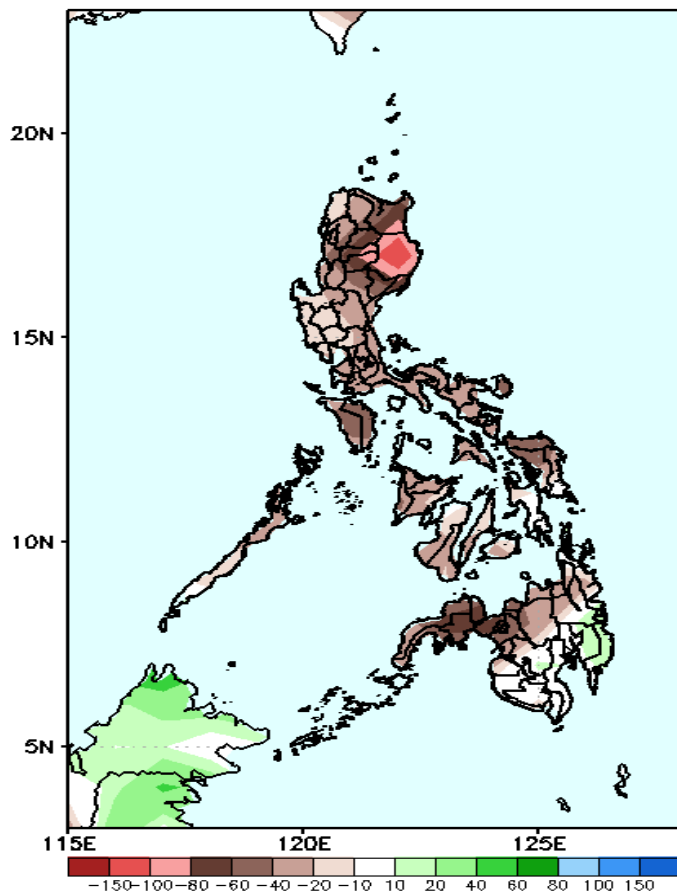


Upper and low level Divergence suggest likelihood of light to moderate precipitation in the eastern sections of Visayas and Mindanao. Northeast Monsoon affecting Eastern Luzon and Eastern Visayas while Easterlies affecting the Mindanao during the forecast period.

# Precipitation Anomaly and Exceedance Probability > 25/50 mm

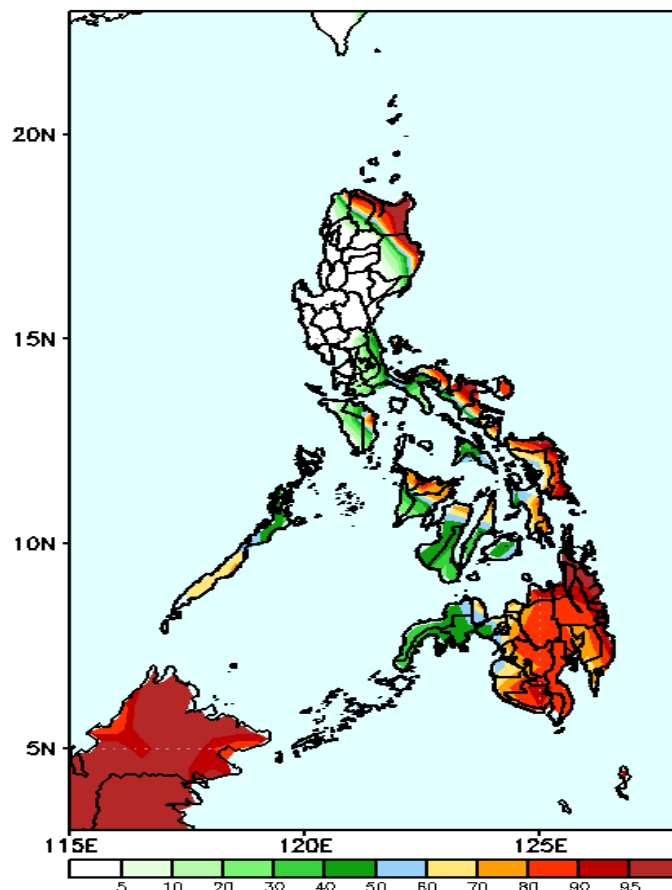
**Week 1: Dec 02-08, 2021**

GEFS Week-1 Precip Anomaly  
Valid: 20211202 - 20211208



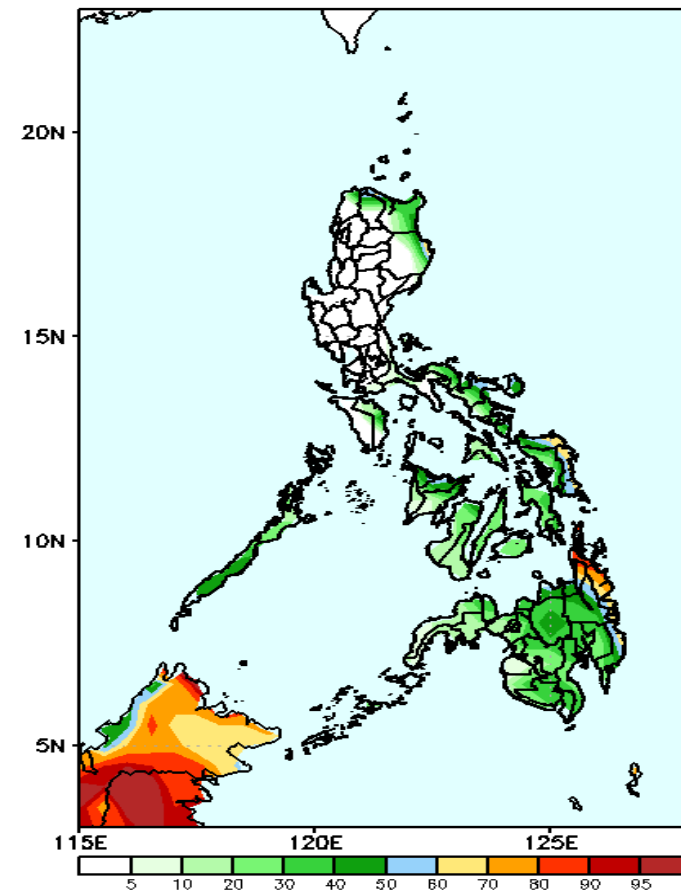
Rainfall deficit of 40-80mm is expected in most parts of the country and up to 150mm in Isabela during the forecast period.

GEFS Week-1 Exceedance Prob. > 25mm  
Valid: 20211202 - 20211208



High probability of rainfall to exceed 25mm in Apayao, Cagayan, parts of Isabela, most parts of Bicol Region, eastern Visayas, Aklan, Capiz and Mindanao (except Zamboanga Peninsula) while less likely for the rest of Luzon during the forecast period.

GEFS Week-1 Exceedance Prob. > 50mm  
Valid: 20211202 - 20211208

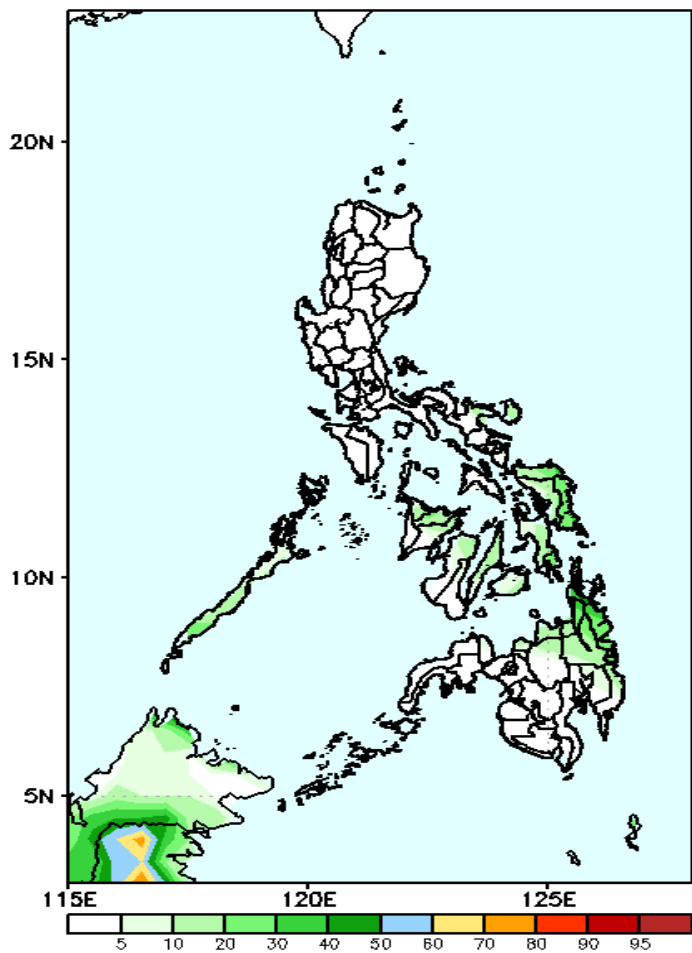


60-95% probability of rainfall to exceed 50mm in CARAGA Region and Northern & Eastern Samar while less likely for the rest of the country during the forecast period.

# Exceedance Probability > 100/150/200 mm

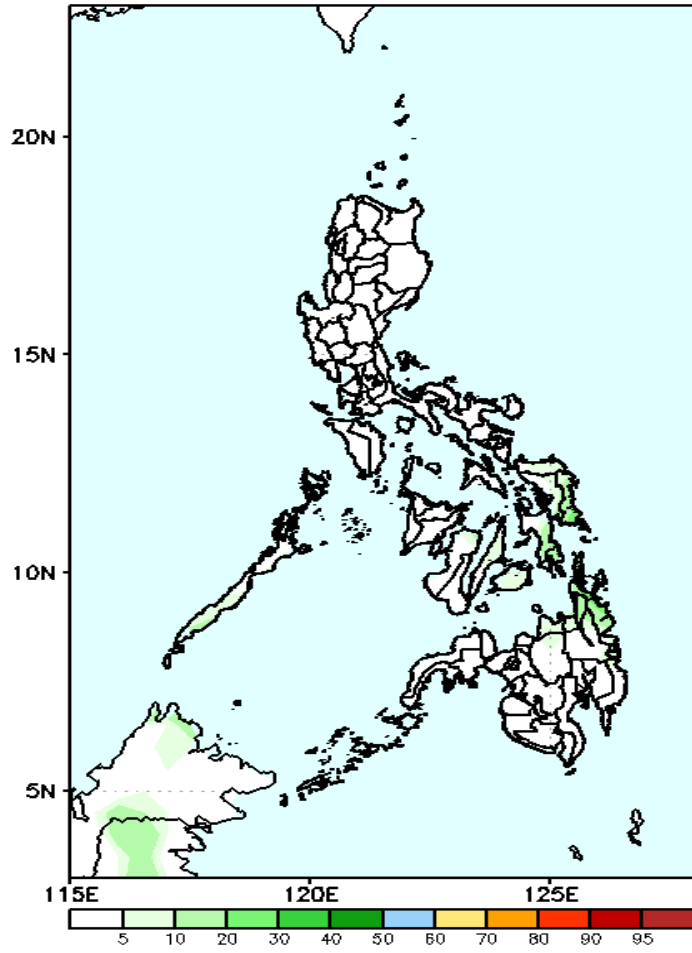
## Week 1: Dec 02-08, 2021

GEFS Week-1 Exceedance Prob. > 100mm  
Valid: 20211202 – 20211208



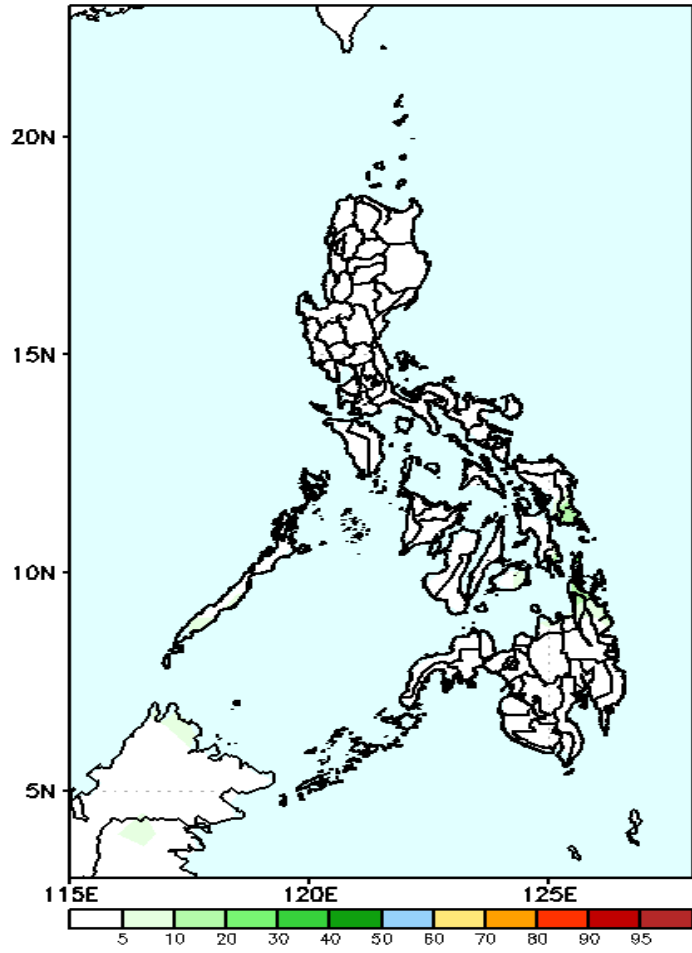
Less probability of rainfall to exceed 100mm in most parts of the country is expected during the forecast period.

GEFS Week-1 Exceedance Prob. > 150mm  
Valid: 20211202 – 20211208



Less probability of rainfall to exceed 150mm in most parts of the country is expected during the forecast period.

GEFS Week-1 Exceedance Prob. > 200mm  
Valid: 20211202 – 20211208

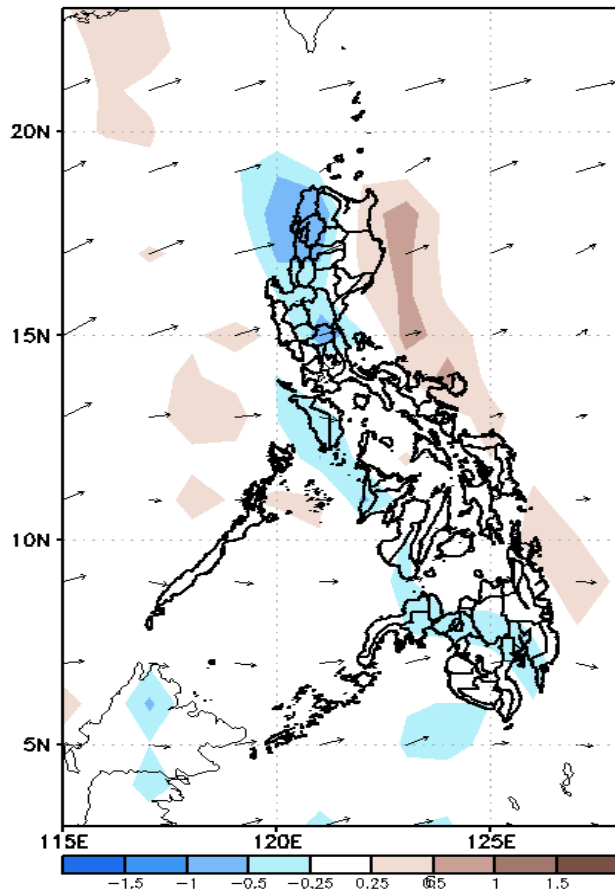


Less probability of rainfall to exceed 200mm in most parts of the country is expected during the forecast period.

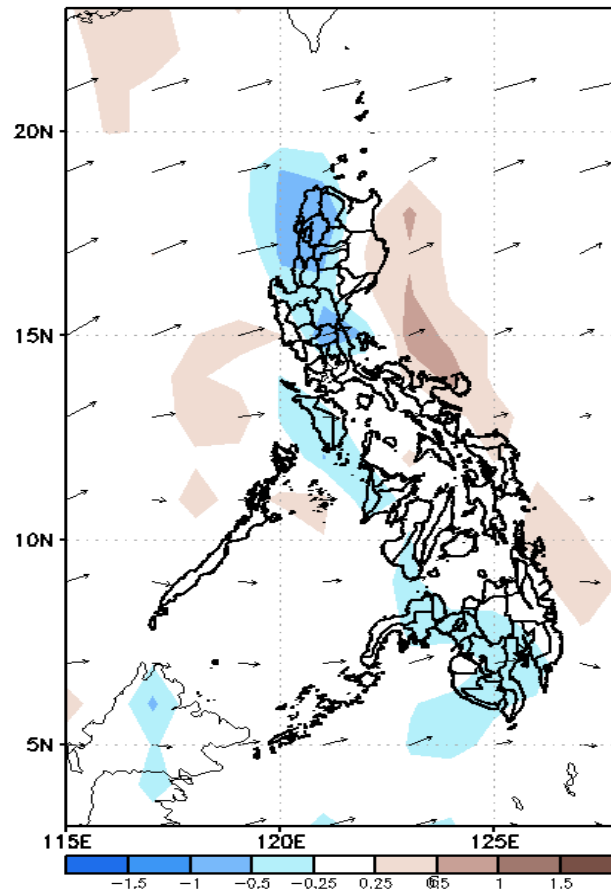
# GEFS Week-2 Forecasts: Divergence & Wind Anomaly

**Week 2: Dec 09-15, 2021**

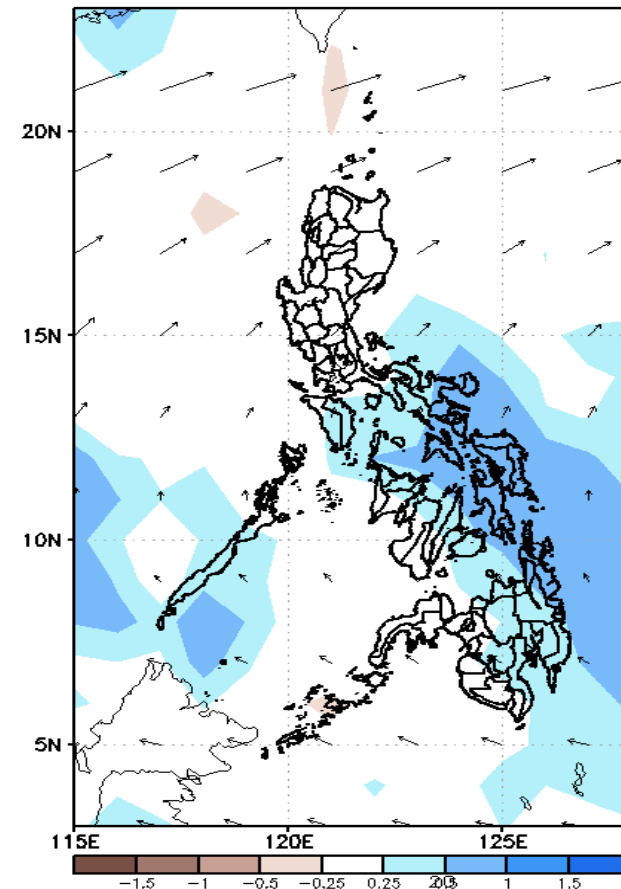
GEFS Week-2 850-hPa Divergence and Wind Anom  
Valid: 20211209 - 20211215



GEFS Week-2 700-hPa Divergence and Wind Anom  
Valid: 20211209 - 20211215



GEFS week-2 200-hPa Divergence and Wind Anom  
Valid: 20211209 - 20211215

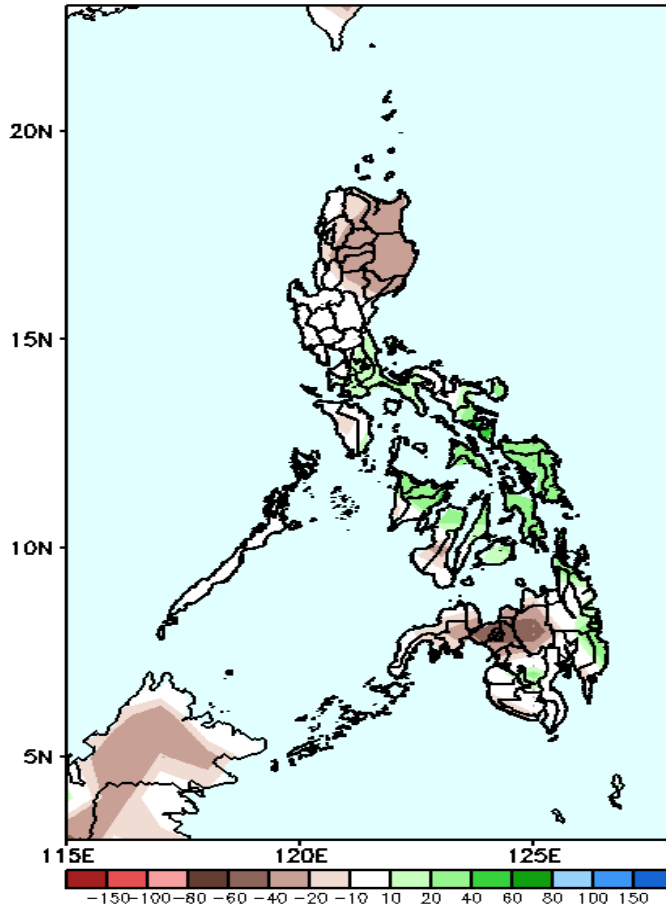


Upper and low level Divergence suggest likelihood of light to moderate precipitation in some parts of Northern and Central Luzon, most parts Bicol region, Visayas and Mindanao (except Western Mindanao). Northeast Monsoon affecting the eastern sections of Luzon and Visayas while Easterlies affecting the rest of the country during the forecast period.

# Precipitation Anomaly and Exceedance Probability > 25/50 mm

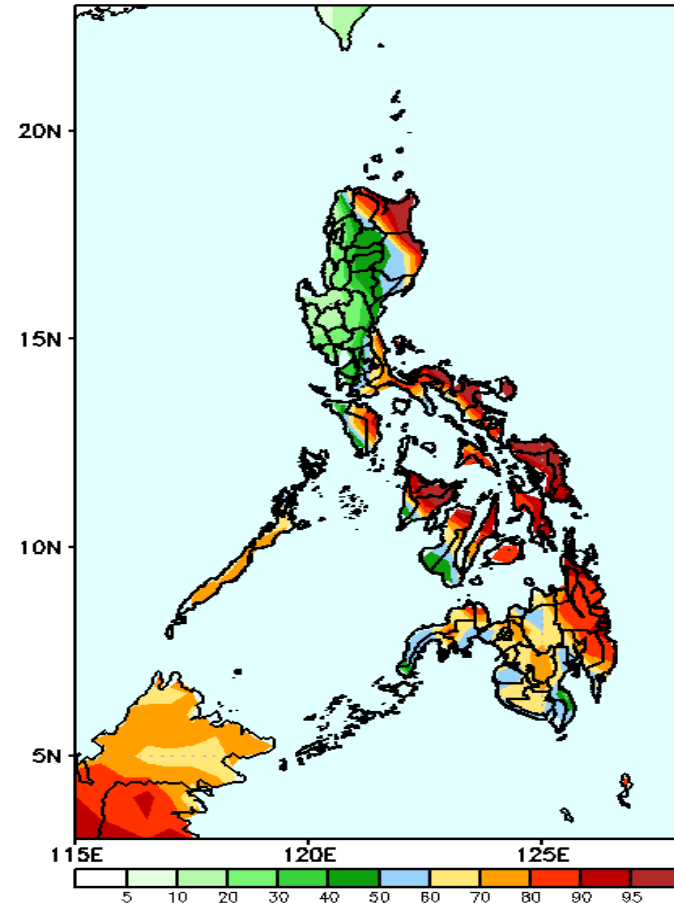
## Week 2: Dec 09-15, 2021

GEFS Week-2 Precip Anomaly  
Valid: 20211209 – 20211215



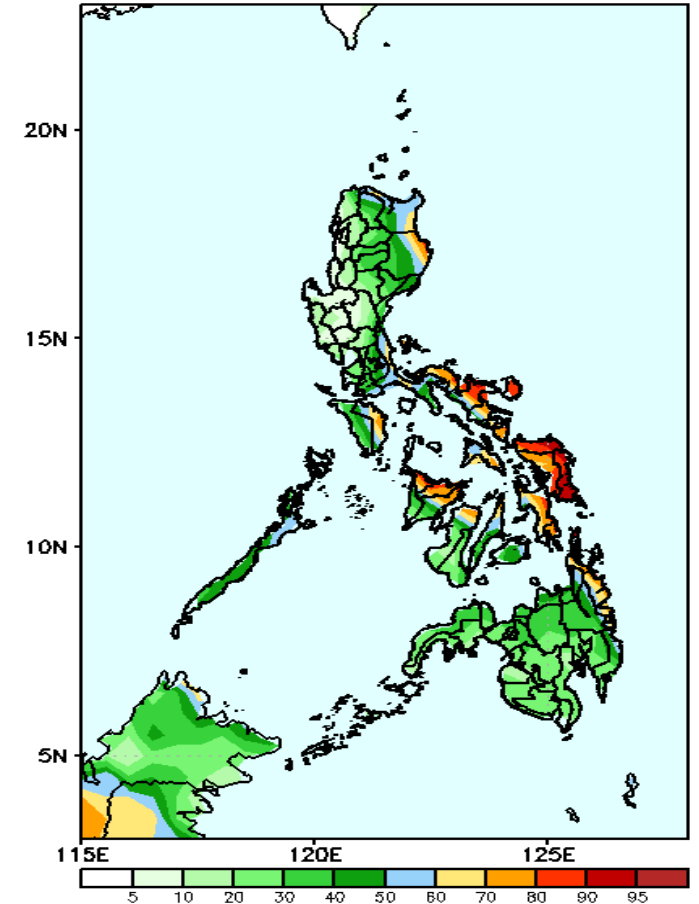
Rainfall deficit of 20-80mm is expected in most parts of Cordillera Region, Cagayan Valley and Northern Mindanao while 40-60mm increase of rainfall in most Bicol Region and most parts of Visayas during the forecast period.

GEFS Week-2 Exceedance Prob. > 25mm  
Valid: 20211209 – 20211215



High probability of rainfall to exceed 25mm in Apayao, Cagayan, half of Isabela, most parts of Southern Luzon, Visayas and Mindanao while less likely for the rest of the country during the forecast period.

GEFS Week-2 Exceedance Prob. > 50mm  
Valid: 20211209 – 20211215



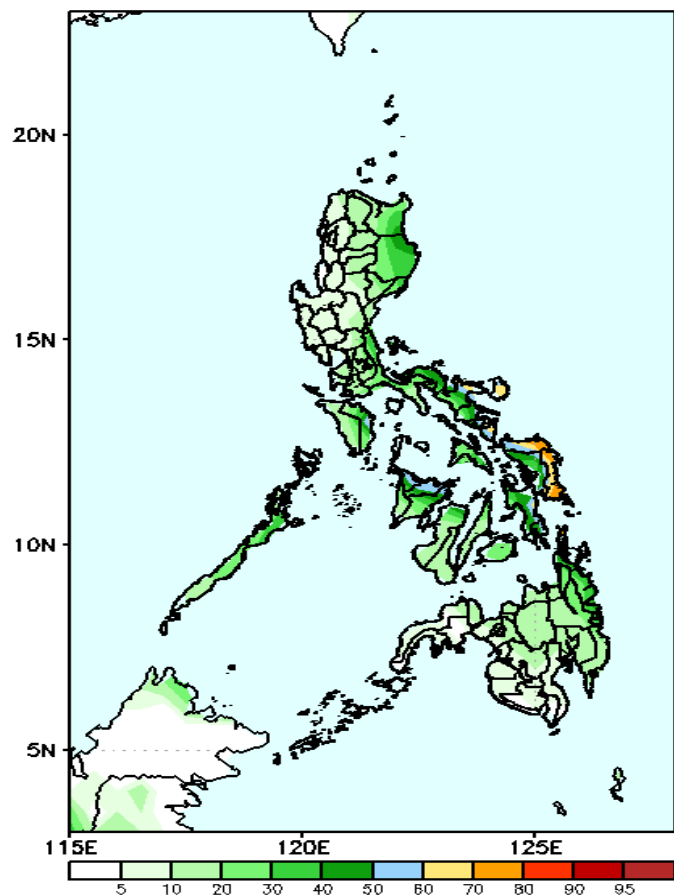
High probability of rainfall to exceed 50mm in eastern parts of Cagayan & Isabela, Or. Mindoro, Bicol Region, Eastern and Central Visayas, eastern PANAY, northern part of Negros Occ. and most parts of CARAGA Region while less likely for the rest of the country during the forecast period.



# Exceedance Probability > 100/150/200 mm

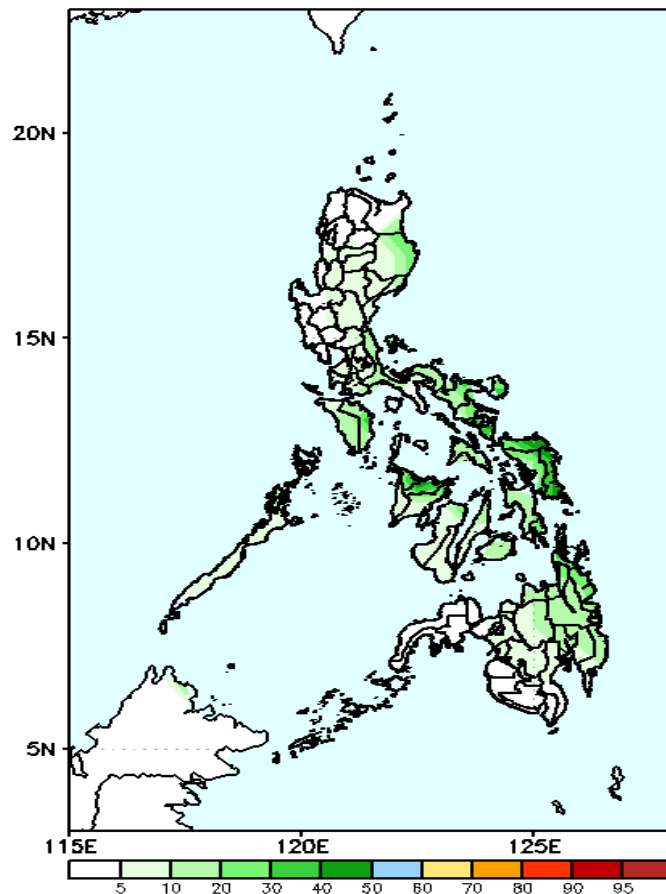
**Week 2: Dec 09-15, 2021**

GEFS Week-2 Exceedance Prob. > 100mm  
Valid: 20211209 – 20211215



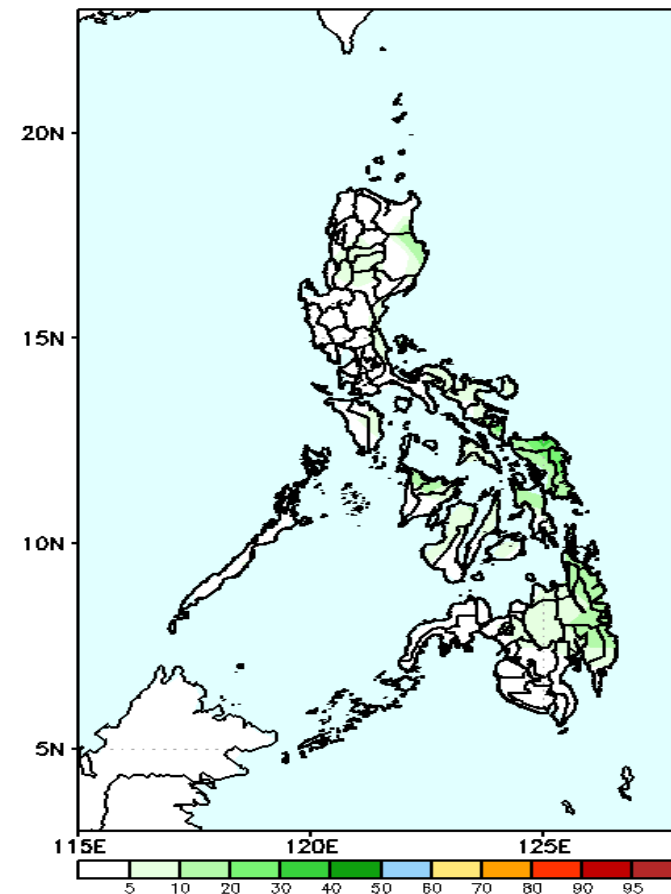
60-80% probability of rainfall to exceed 100mm in Camarines Sur, Catanduanes and in Northern & Eastern Samar while less likely for the rest of the country during the forecast period.

GEFS Week-2 Exceedance Prob. > 150mm  
Valid: 20211209 – 20211215



Less probability of rainfall to exceed 150mm in most parts of the country is expected during the forecast period.

GEFS Week-2 Exceedance Prob. > 200mm  
Valid: 20211209 – 20211215

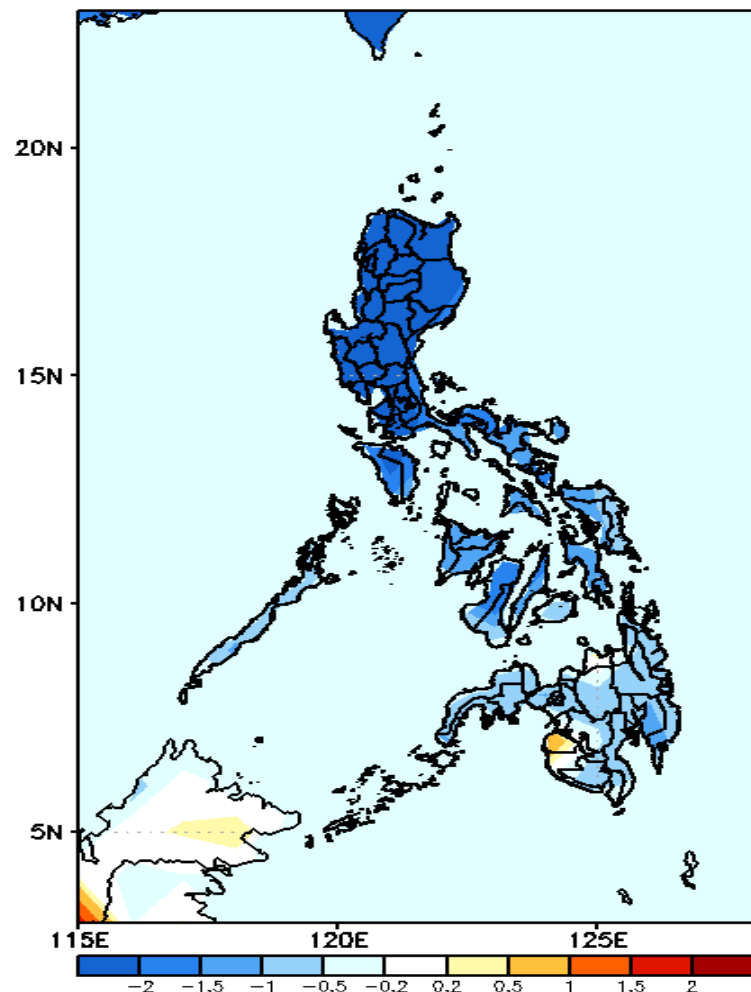


Less probability of rainfall to exceed 200mm in most parts of the country is expected during the forecast period.



# GEFS Week-1 & 2 Forecasts: T2m Anomaly

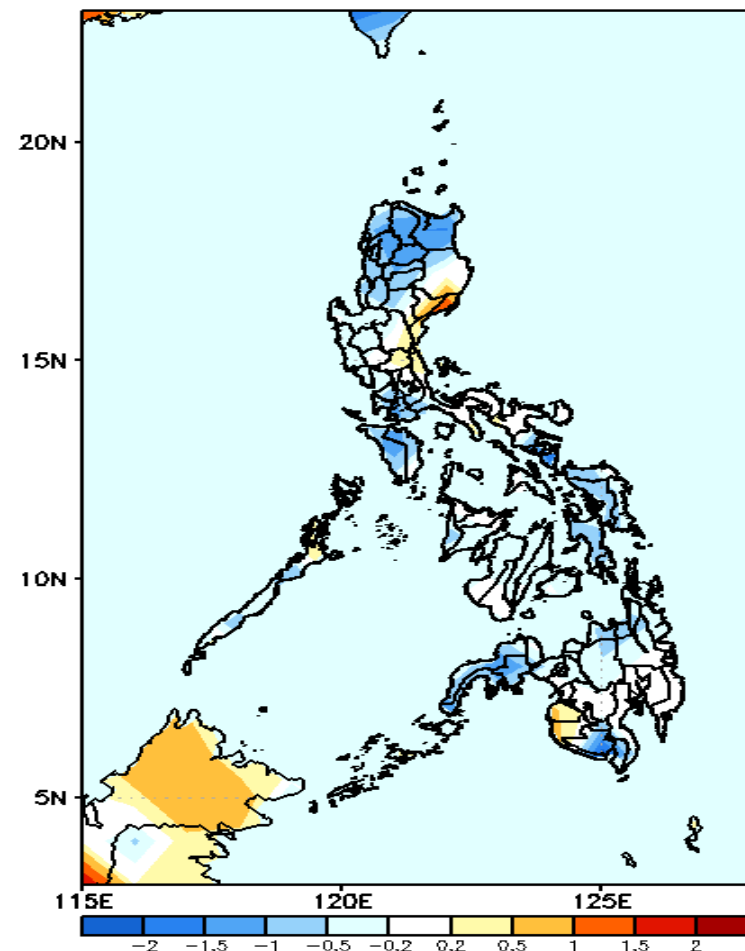
GEFS Week-1 T2m Anomaly  
Valid: 20211202 – 20211208



**2m Temperature Week 1: Dec 02-08, 2021**

Cooler than average surface air temperature will likely experience in most parts of Luzon and Visayas while slightly cooler in Mindanao during the forecast period.

GEFS Week-2 T2m Anomaly  
Valid: 20211209 – 20211215



**2m Temperature Week 2: Dec 09-15, 2021**

Slightly cooler to cooler than average surface air temperature will likely experience in most parts of Northern Luzon, Mindoro, Eastern Visayas, Zamboanga Peninsula, Sarangani and South Cotabato while average to slightly warmer for the rest of the country during the forecast period.