



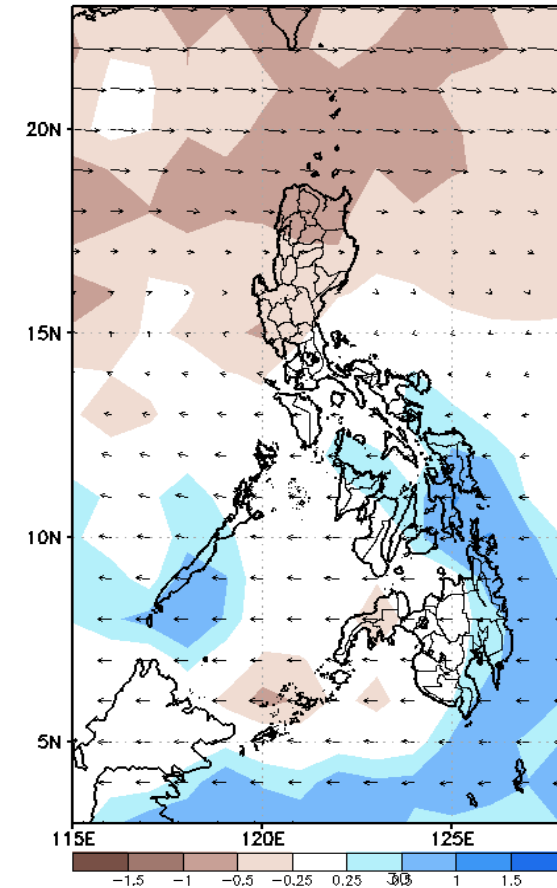
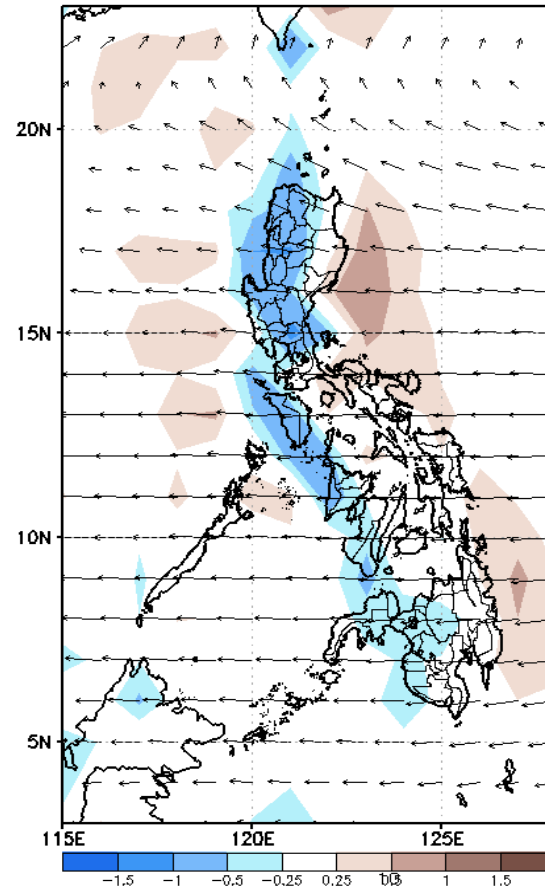
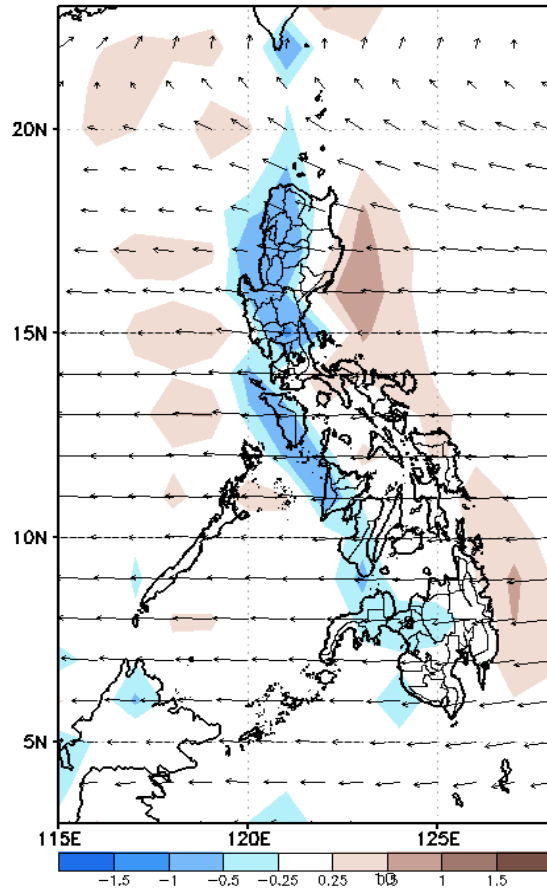
# Week 1 & Week 2 Forecast for the Philippines using GEFS Model



# GEFS Week-1 Forecasts: Wind Anomaly Forecast

Week 1: Dec 02-08, 2022

GEFS Week-1 850-hPa Divergence and Wind Anom. Valid: 20221202 - 20221208    GEFS Week-1 700-hPa Divergence and Wind Anom. Valid: 20221202 - 20221208    GEFS Week-1 200-hPa Divergence and Wind Anom. Valid: 20221202 - 20221208

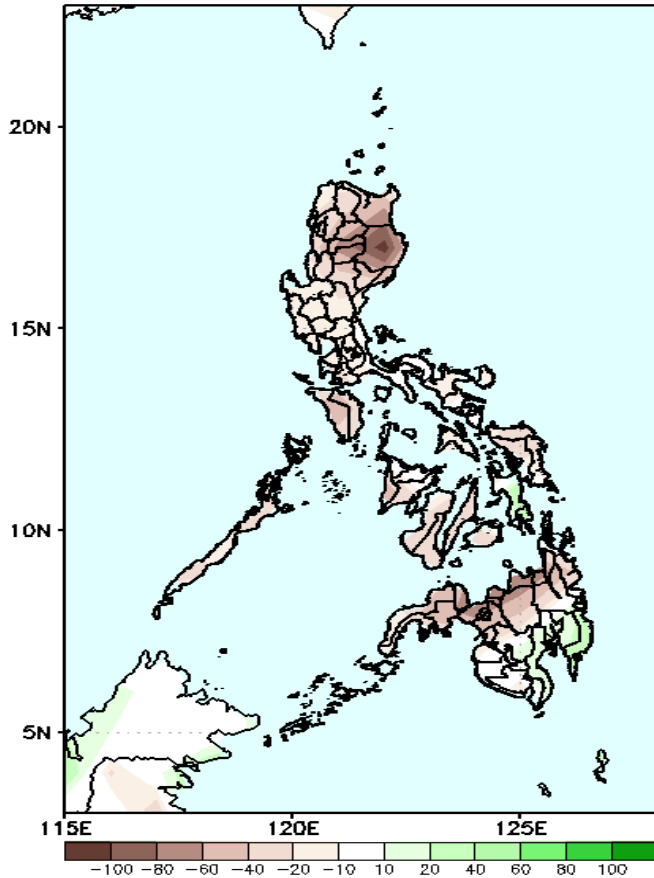


Easterlies will likely affect most parts of the country during the forecast period.

# Precipitation Anomaly and Exceedance Probability > 25/50 mm

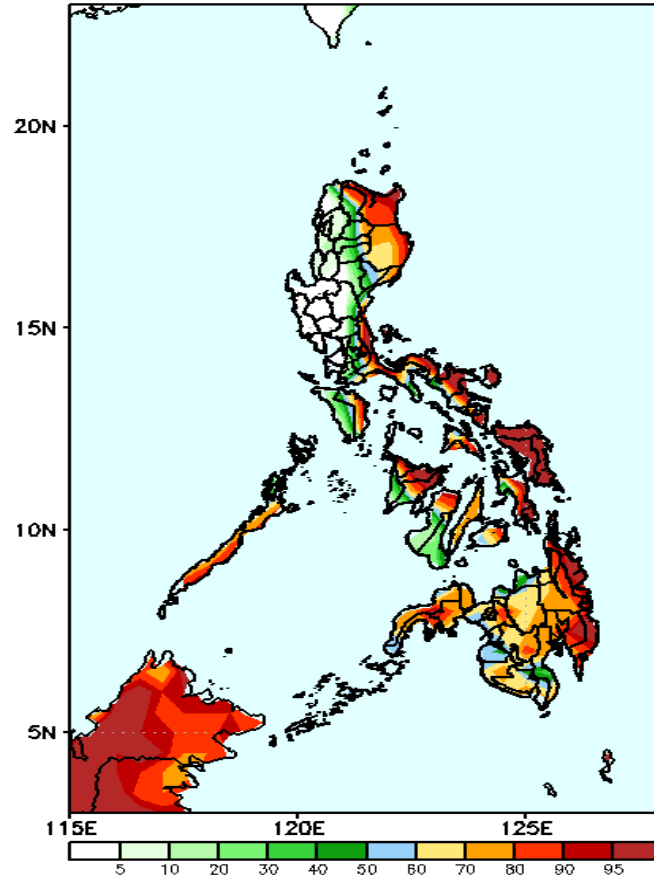
Week 1: Dec 02-08, 2022

GEFS Week-1 Precip. Anomaly  
Valid: 20221202 - 20221208



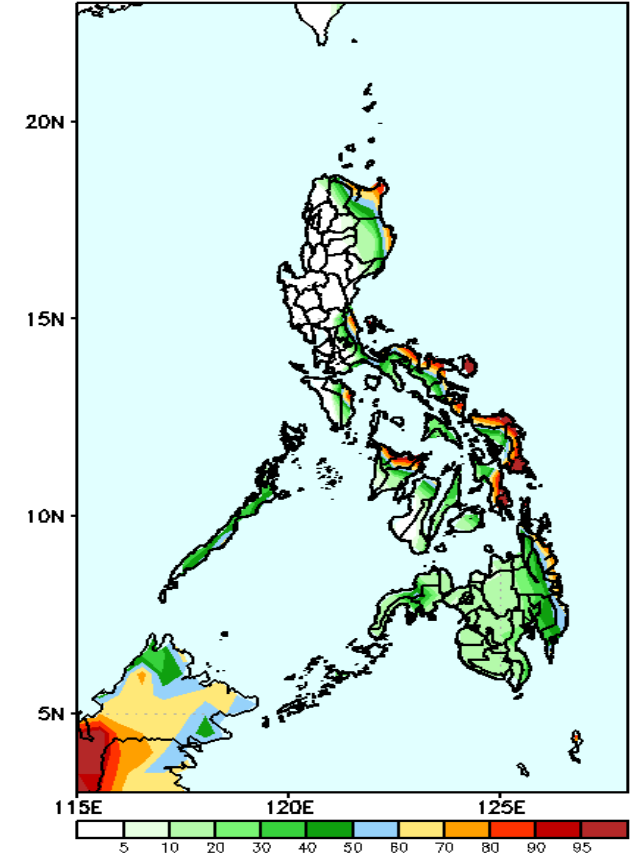
Rainfall deficit of up to 100mm is expected in Isabela and 40-80mm in most parts of the country except in Davao Region (20-30mm increase of rainfall) during the forecast period.

GEFS Week-1 Exceedance Prob. > 25mm  
Valid: 20221202 - 20221208



High probability of rainfall to exceed 25mm in the eastern section of the country, Or. Mindoro, Palawan, most parts of Visayas (except Antique, and most parts of Negros Island) and most parts of Mindanao while less likely for the rest of Luzon and Visayas during the forecast period.

GEFS Week-1 Exceedance Prob. > 50mm  
Valid: 20221202 - 20221208

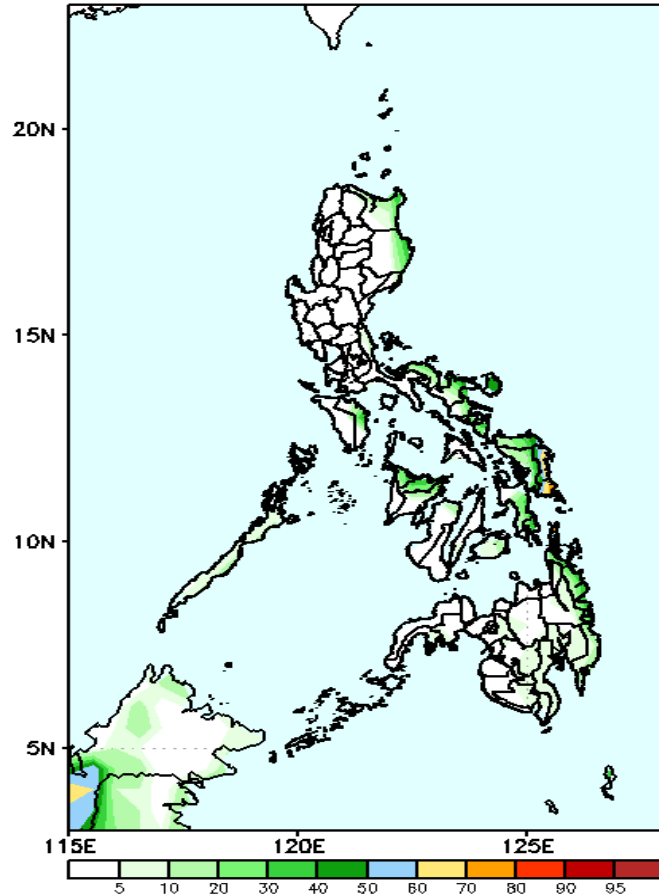


High probability of rainfall to exceed 50mm in some areas in Eastern Luzon, Aklan, Capiz, Northern and Eastern Samar, Southern Leyte and Surigao del Sur while less likely for the rest of the country during the forecast period.

# Exceedance Probability > 100/150/200 mm

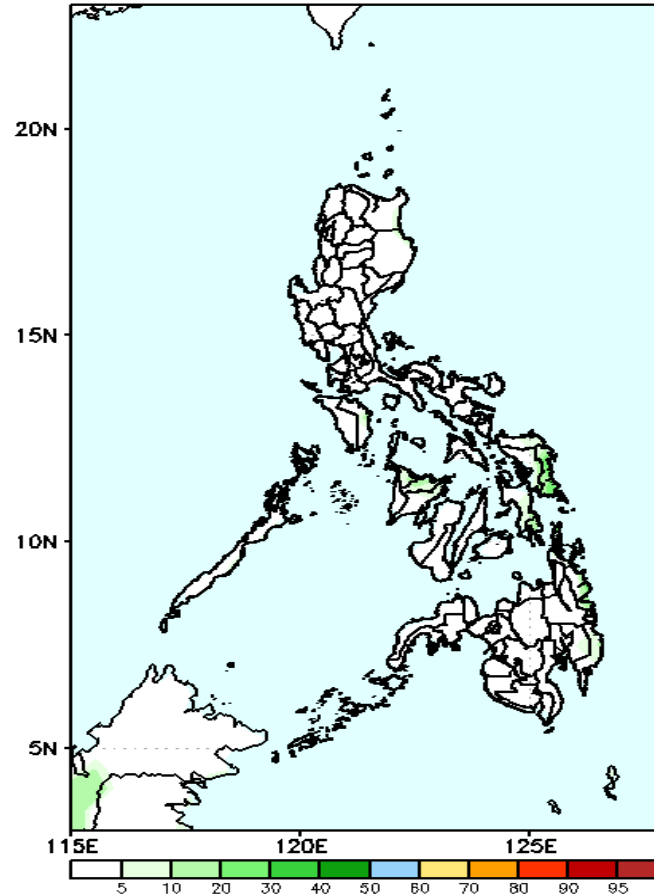
Week 1: Dec 02-08, 2022

GEFS Week-1 Exceedance Prob. > 100mm  
Valid: 20221202 – 20221208



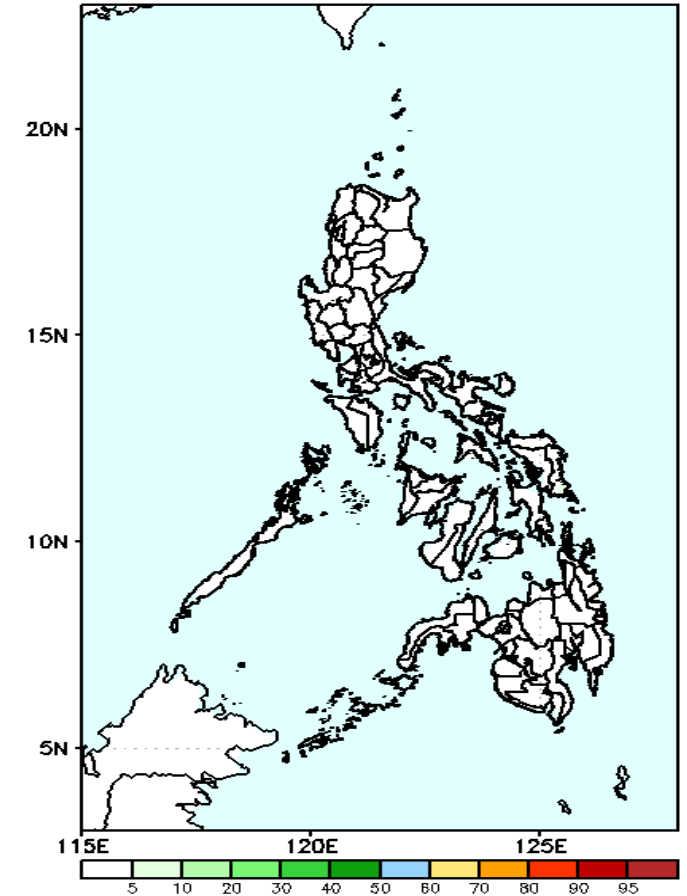
Low probability of rainfall to exceed 100mm in most parts of the country during the forecast period.

GEFS Week-1 Exceedance Prob. > 150mm  
Valid: 20221202 – 20221208



Low probability of rainfall to exceed 150mm in most parts of the country during the forecast period.

GEFS Week-1 Exceedance Prob. > 200mm  
Valid: 20221202 – 20221208

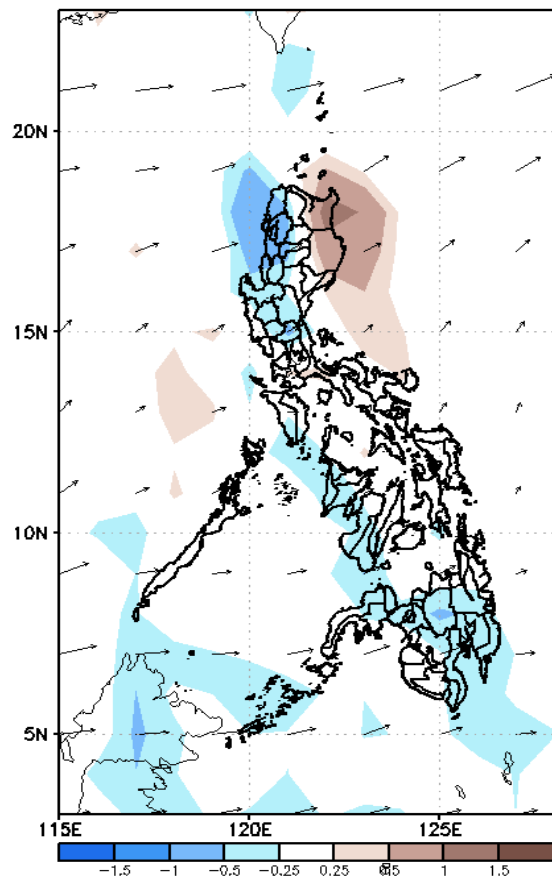


Low probability of rainfall to exceed 200mm in most parts of the country during the forecast period.

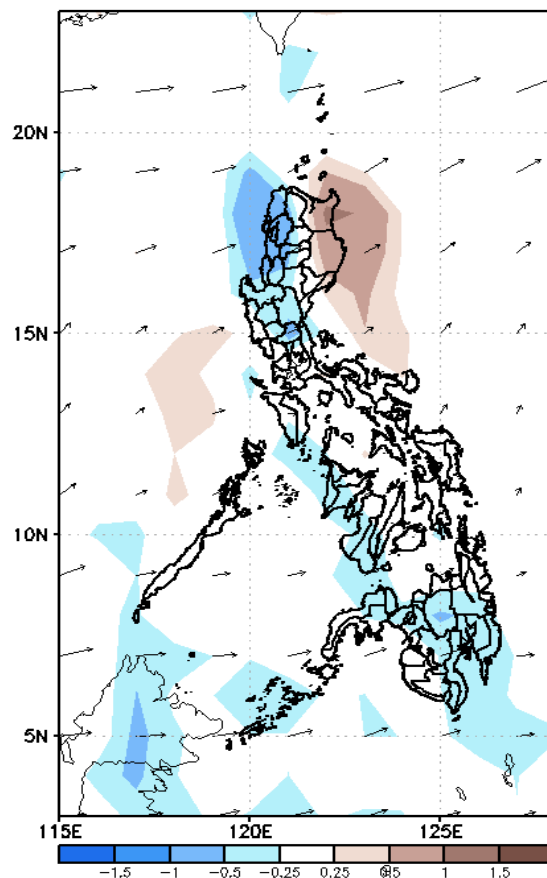
# GEFS Week-2 Forecasts: Wind Anomaly Forecast

Week 2: Dec 09-15, 2022

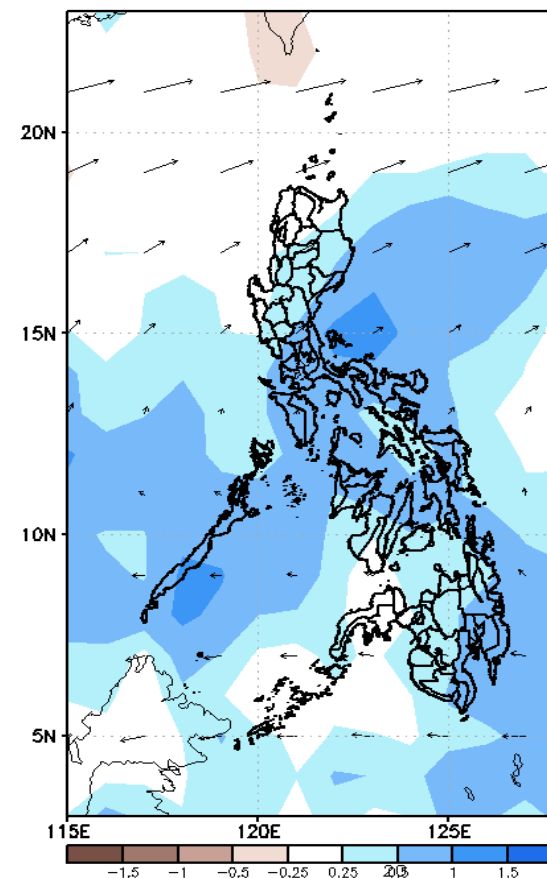
GEFS Week-2 850-hPa Divergence and Wind Anom  
Valid: 20221209 - 20221215



GEFS Week-2 700-hPa Divergence and Wind Anom  
Valid: 20221209 - 20221215



GEFS week-2 200-hPa Divergence and Wind Anom  
Valid: 20221209 - 20221215

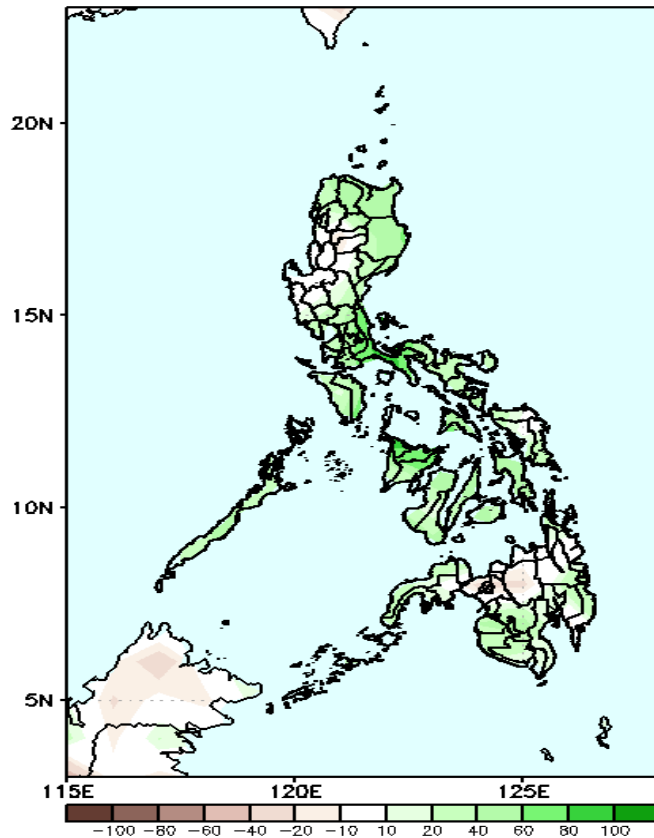


Northeast Monsoon affecting Northern Luzon; Easterlies will likely affect the rest of the country during the forecast period.

# Precipitation Anomaly and Exceedance Probability > 25/50 mm

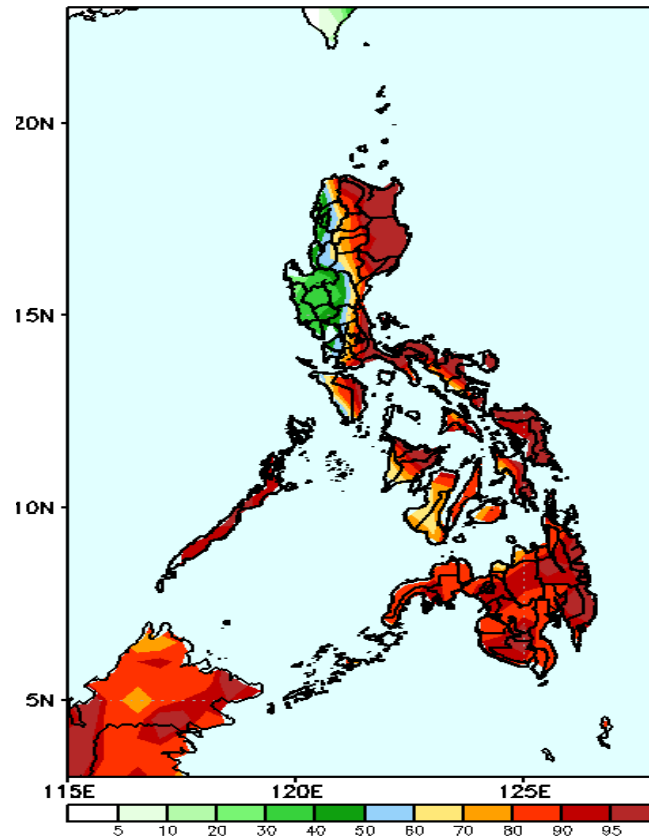
**Week 2: Dec 09-15, 2022**

GEFS Week-2 Precip Anomaly  
Valid: 20221209 – 20221215



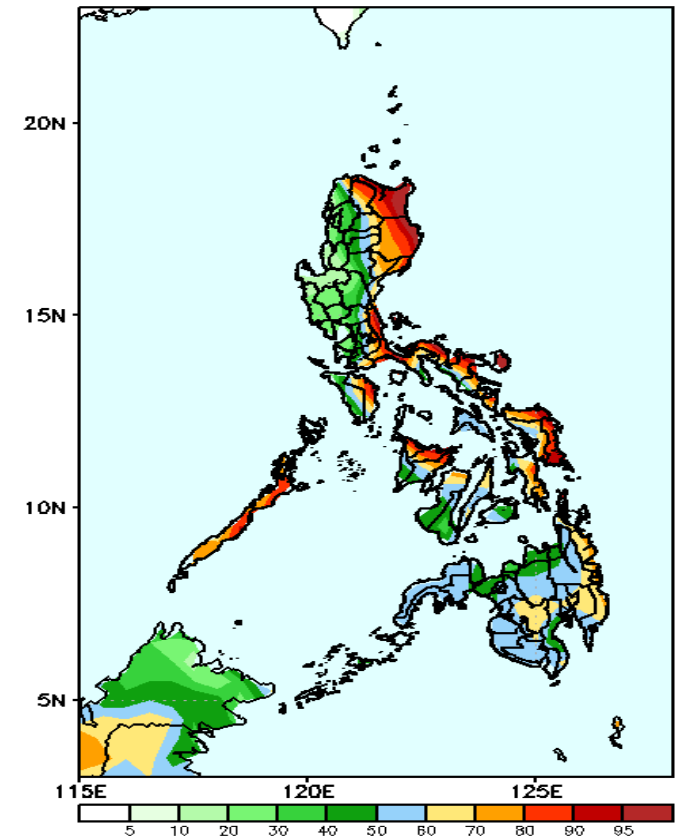
Increase of Rainfall of 40-80mm is expected in most parts of the country except in Bukidnon during the forecast period.

GEFS Week-2 Exceedance Prob. > 25mm  
Valid: 20221209 – 20221215



High probability of rainfall to exceed 25mm in most parts of the country except most parts of Ilocos region and Central Luzon (except Aurora and eastern sections of Nueva Ecija and Bulacan) during the forecast period.

GEFS Week-2 Exceedance Prob. > 50mm  
Valid: 20221209 – 20221215



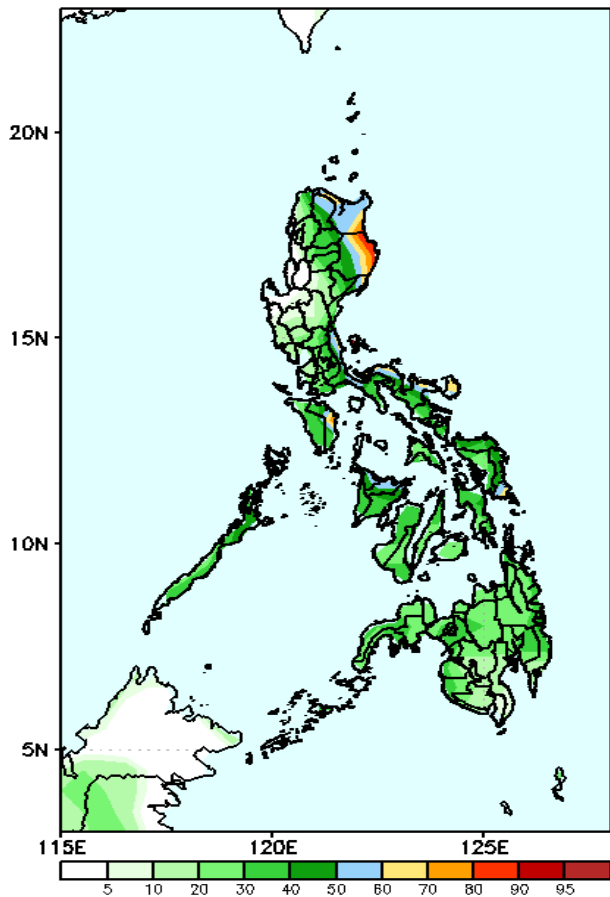
High probability of rainfall to exceed 50mm in the eastern parts of CAR, most parts of Eastern and Southern Luzon, Visayas(except Negros Oriental and Antique) and some areas in Eastern and Central Mindanao including Zamboanga Peninsula while less likely for the rest of Luzon during the forecast period.



# Exceedance Probability > 100/150/200 mm

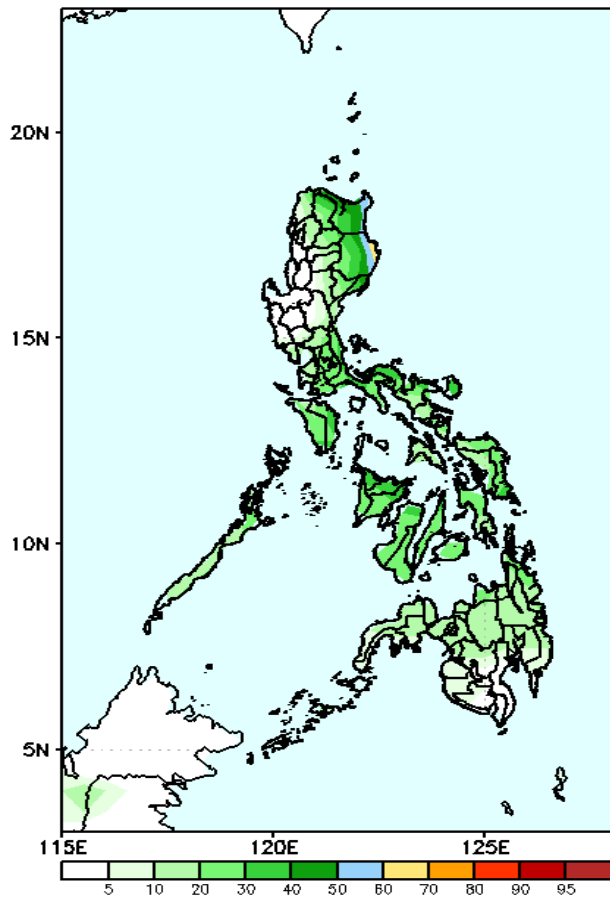
Week 2: Dec 09-15, 2022

GEFS Week-2 Exceedance Prob. > 100mm  
Valid: 20221209 – 20221215



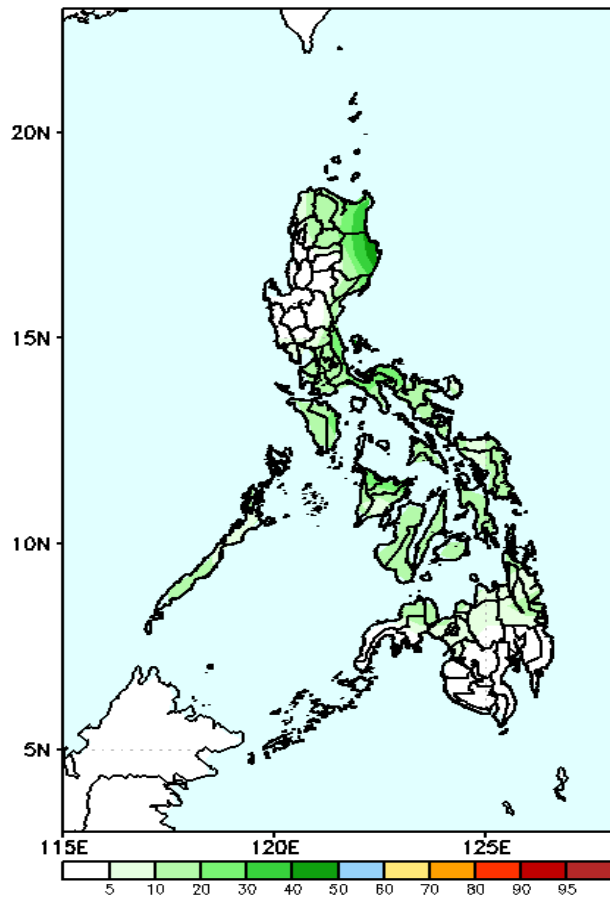
Low probability of rainfall to exceed 100mm in most parts of the country except Cagayan, Isabela and Catanduanes during the forecast period.

GEFS Week-2 Exceedance Prob. > 150mm  
Valid: 20221209 – 20221215



Low probability of rainfall to exceed 150mm in most parts of the country during the forecast period.

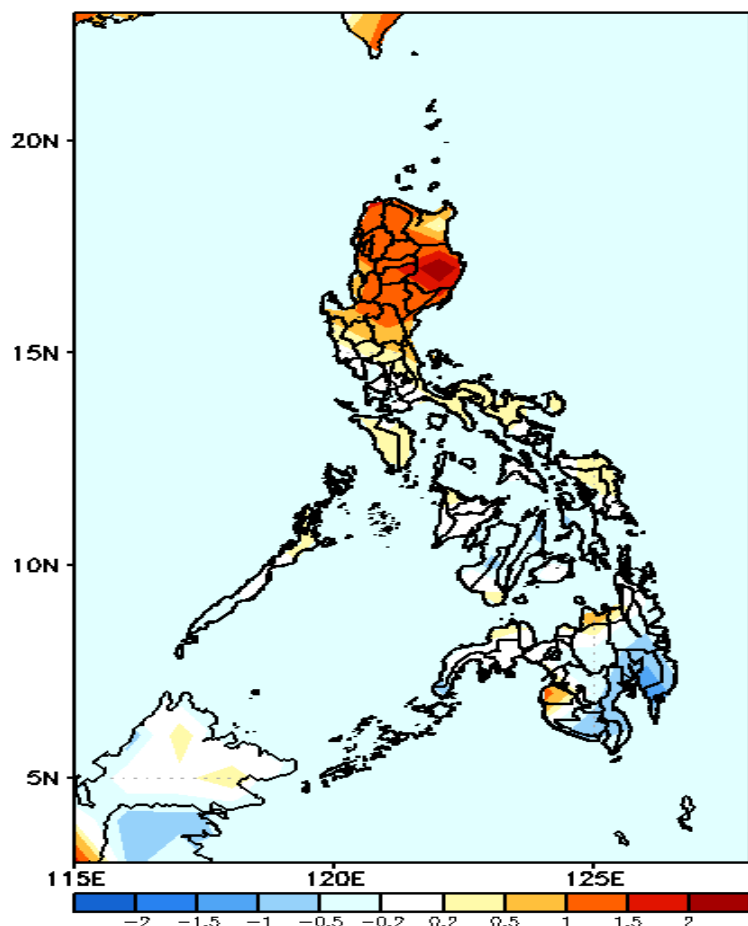
GEFS Week-2 Exceedance Prob. > 200mm  
Valid: 20221209 – 20221215



Low probability of rainfall to exceed 200mm in most parts of the country during the forecast period.

# GEFS Week-1 & 2 Forecasts: T2m Anomaly

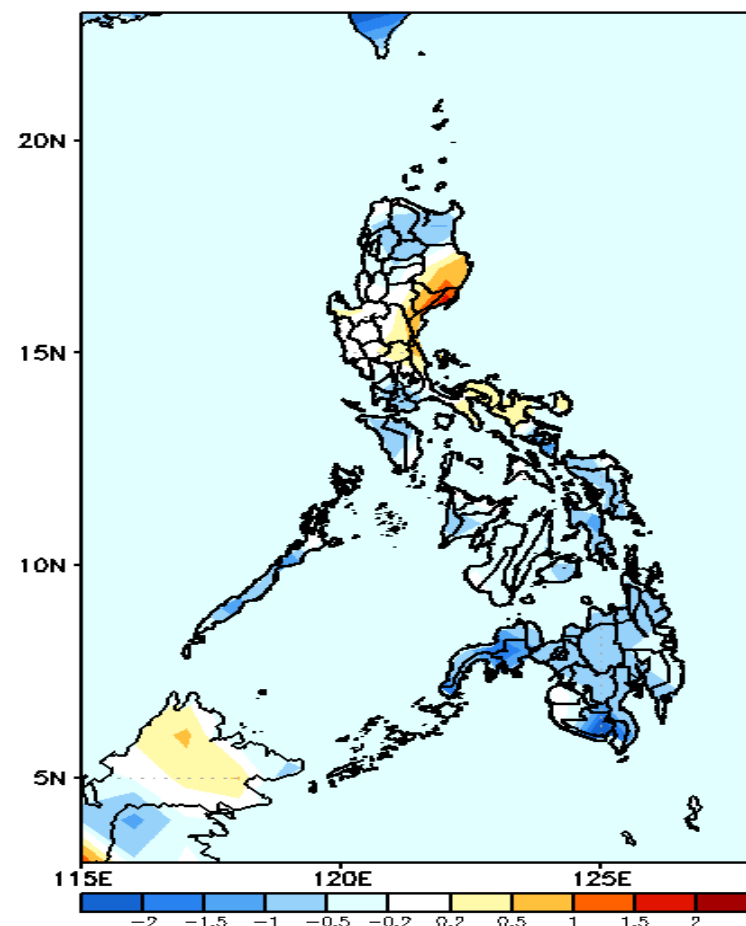
GEFS Week-1 T2m Anomaly  
Valid: 20221202 — 20221208



## 2m Temperature Week 1: Dec 02-08, 2022

Warmer than average surface air temperature will likely experience in most parts Luzon while average to slightly warmer for the rest of the country except in southern Mindanao (slightly cooler) during the forecast period.

GEFS Week-2 T2m Anomaly  
Valid: 20221209 — 20221215



## 2m Temperature Week 2: Dec 09-15, 2022

Near to cooler than average surface air temperature will likely experience in most parts of the country except in some areas in eastern Luzon where slightly warmer to warmer than average surface temp is more likely during the forecast period.