



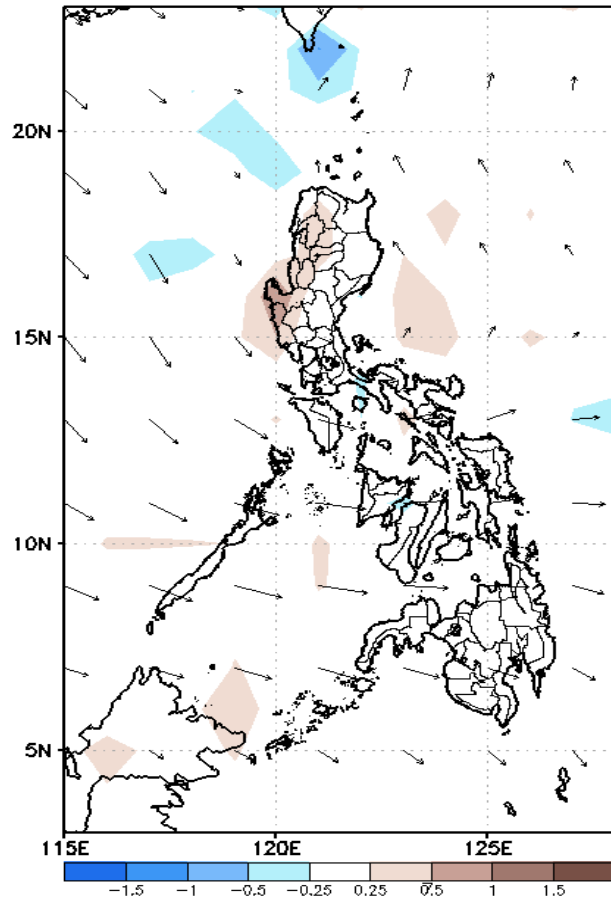
Week 1 & Week 2 Forecast for the Philippines using GEFS Model



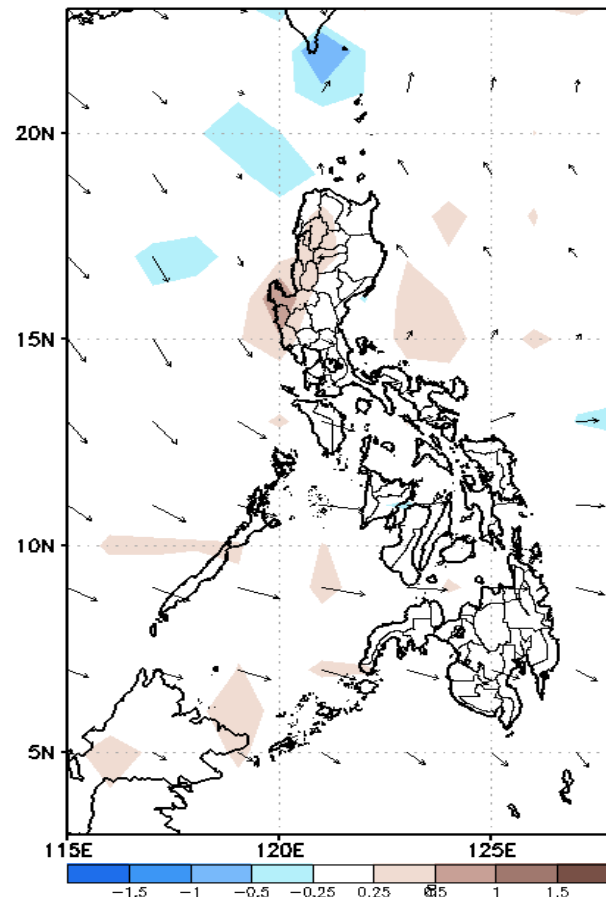
GEFS Week-1 Forecasts: Divergence & Wind Anomaly

Week 1: June 02-08, 2021

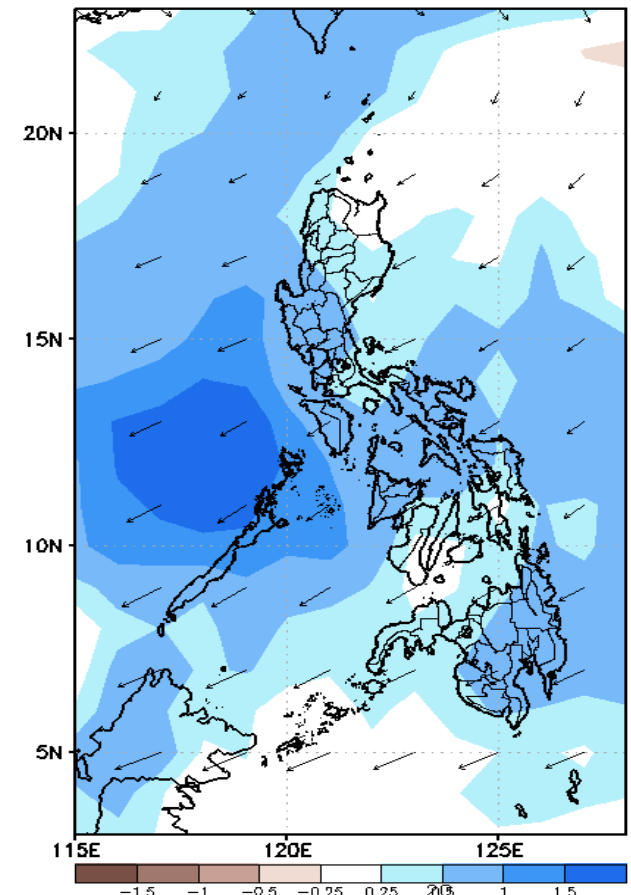
GEFS Week-1 850-hPa Divergence and Wind Anom
Valid: 20210602 - 20210608



GEFS Week-1 700-hPa Divergence and Wind Anom
Valid: 20210602 - 20210608



GEFS Week-1 200-hPa Divergence and Wind Anom
Valid: 20210602 - 20210608

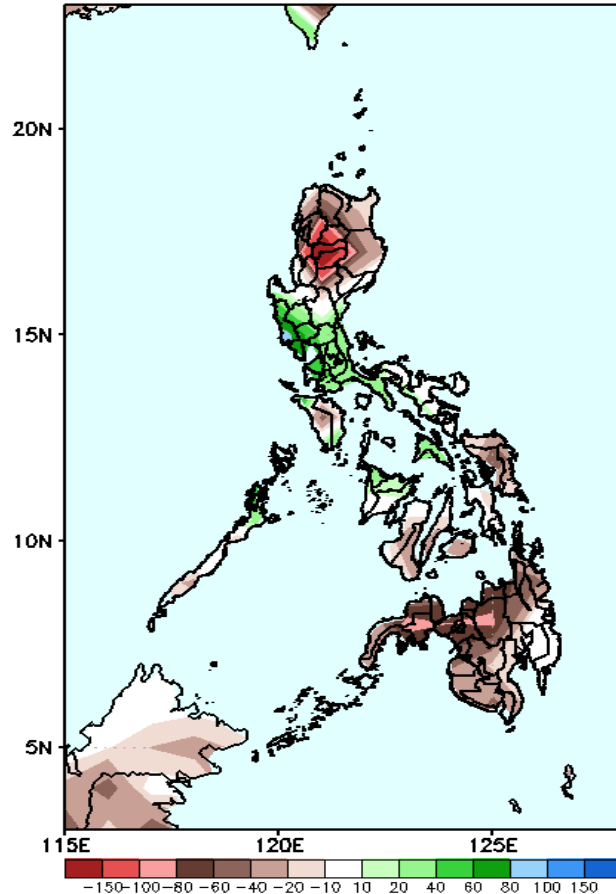


Upper and low level Divergence suggest likelihood of precipitation in parts of the country. Southwest wind flow affecting most parts of the country. Attributing to warm and humid environment during the forecast period.

Precipitation Anomaly and Exceedance Probability > 25/50 mm

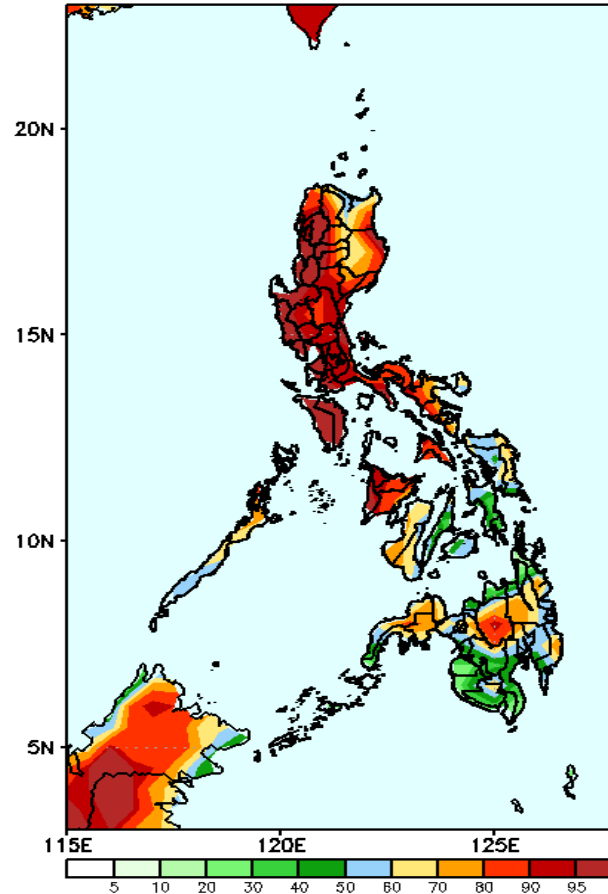
Week 1: June 02-08, 2021

GEFS Week-1 Precip Anomaly
Valid: 20210602 - 20210608



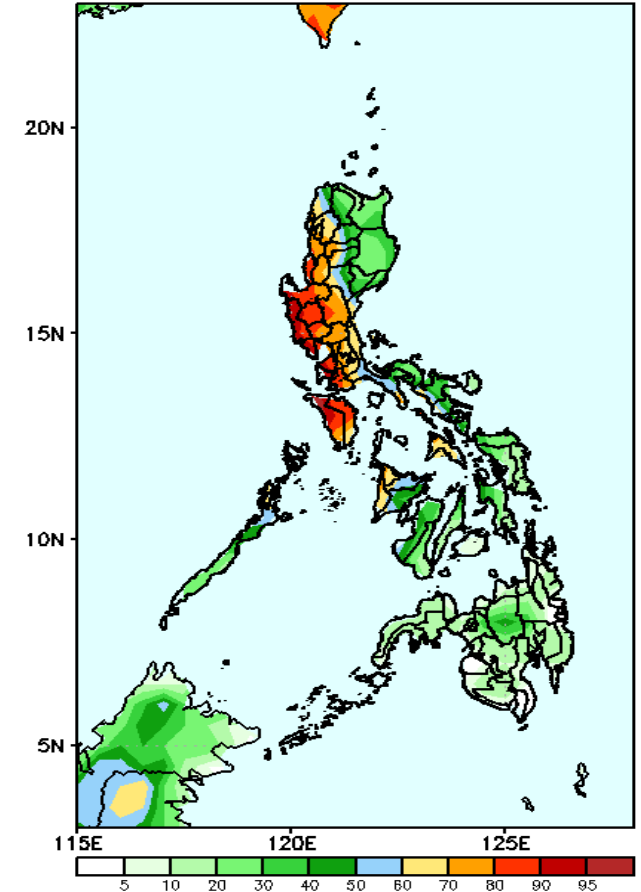
Rainfall deficit of 60-150mm is expected in most parts of Ilocos & Cordillera Region, Cagayan Valley, Mindoro and most parts of Visayas & Mindanao while 40-80mm increase of rainfall for the rest of Luzon is more likely.

GEFS Week-1 Exceedance Prob. > 25mm
Valid: 20210602 - 20210608



High probability of rainfall to exceed 25mm in most parts of Luzon, western Visayas, Zamboanga Peninsula, Eastern Samar and Northern Mindanao while less likely for the rest of the country during the forecast period.

GEFS Week-1 Exceedance Prob. > 50mm
Valid: 20210602 - 20210608

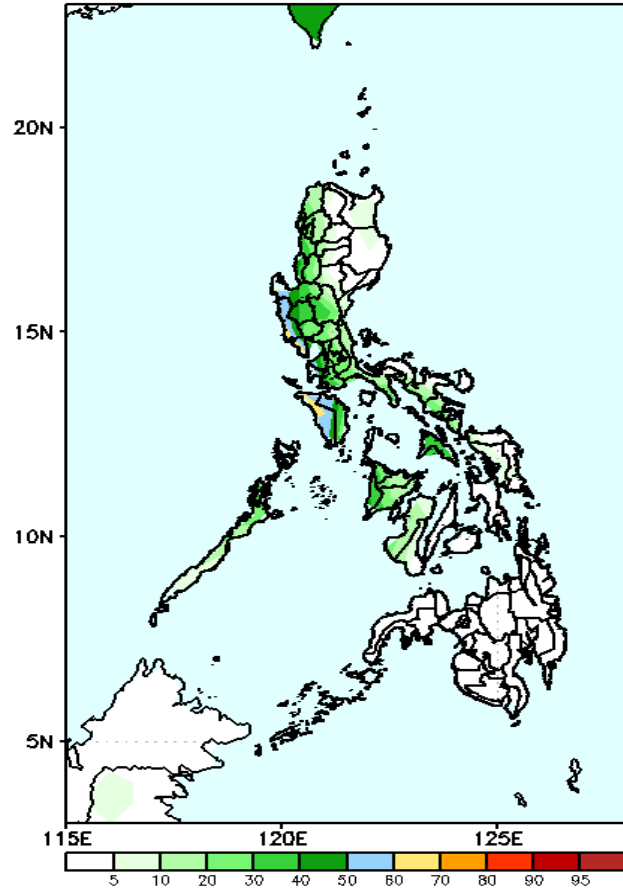


High probability of rainfall to exceed 50mm in most parts of Cordillera region, La Union, Zambales, Bataan, parts of Bicol region, Samar provinces, parts of Western Visayas, Surigao del Sur, Bukidnon and most parts of Zamboanga peninsula while less likely for the rest of the country during the forecast period.

Exceedance Probability > 100/150/200 mm

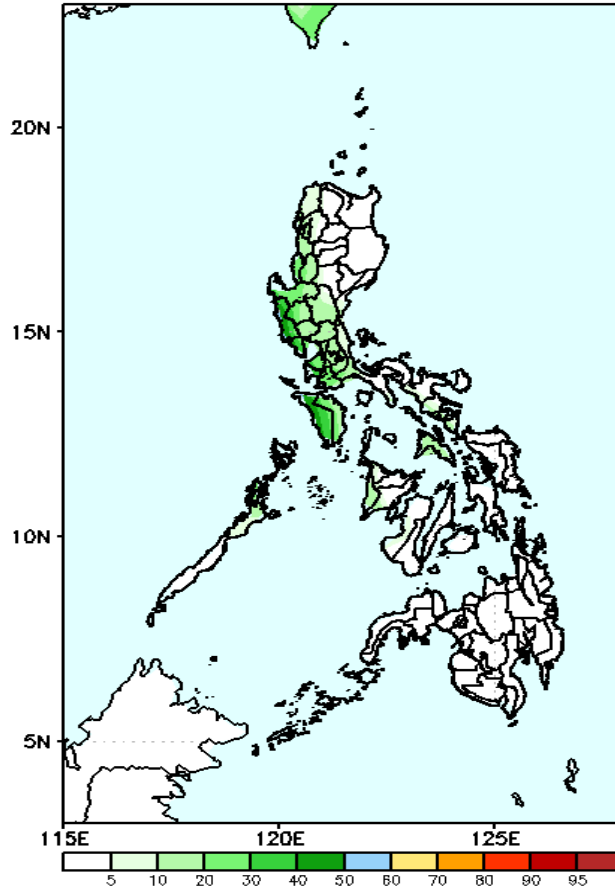
Week 1: June 02-08, 2021

GEFS Week-1 Exceedance Prob. > 100mm
Valid: 20210602 – 20210608



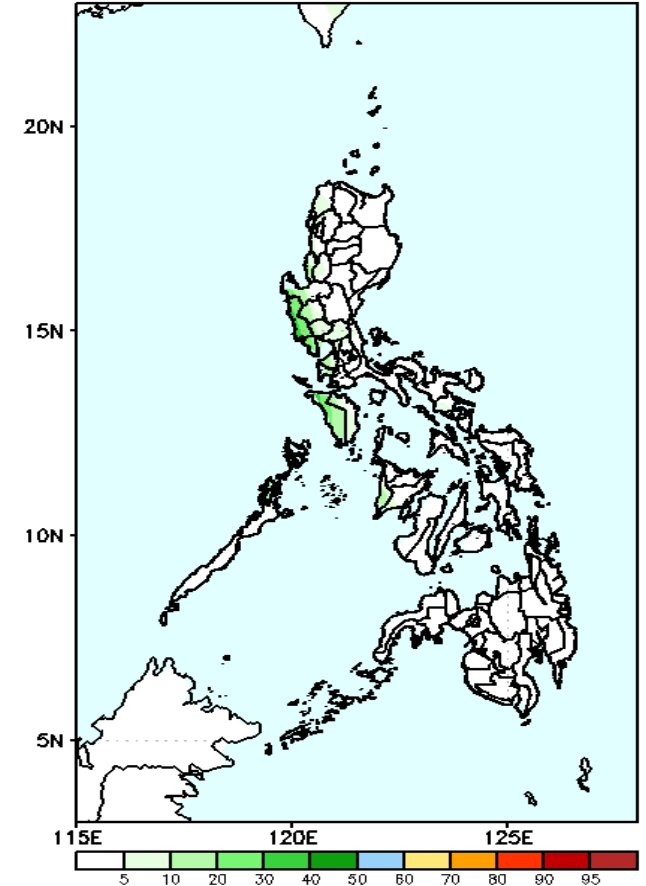
Less probability of rainfall to exceed 100mm in most parts of the country during the forecast period.

GEFS Week-1 Exceedance Prob. > 150mm
Valid: 20210602 – 20210608



Less probability of rainfall to exceed 150mm in most parts of the country during the forecast period.

GEFS Week-1 Exceedance Prob. > 200mm
Valid: 20210602 – 20210608



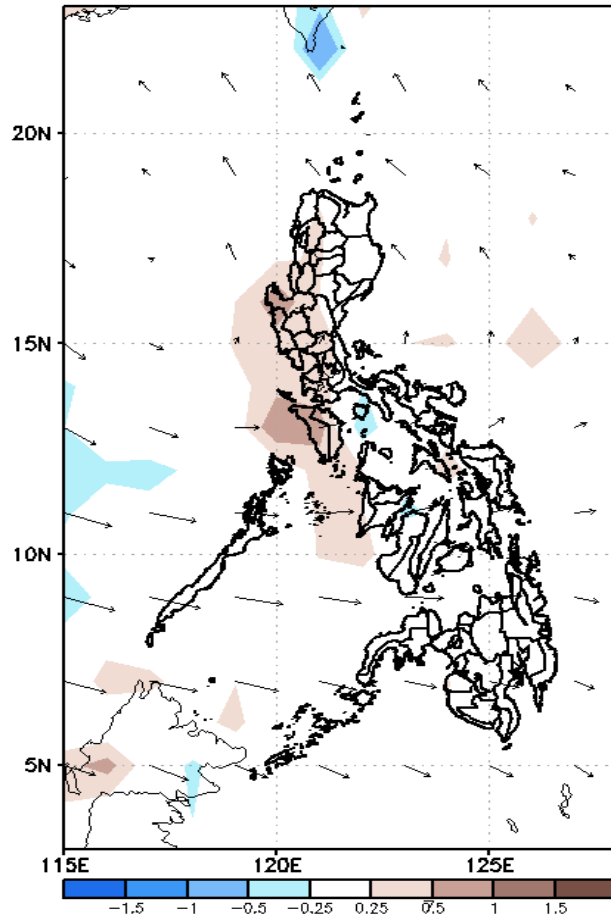
Less probability of rainfall to exceed 200mm in most parts of the country during the forecast period.



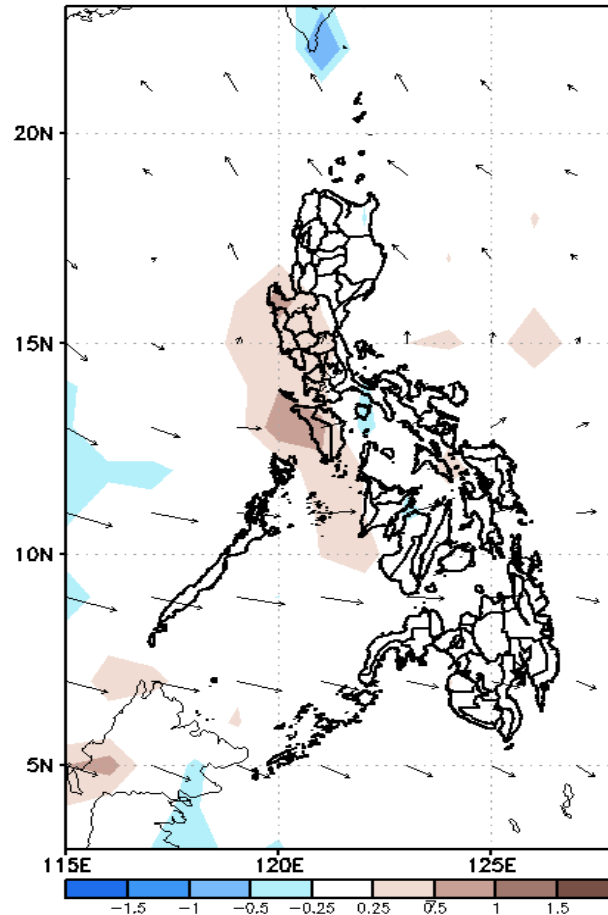
GEFS Week-2 Forecasts: Divergence & Wind Anomaly

Week 2: June 09-15, 2021

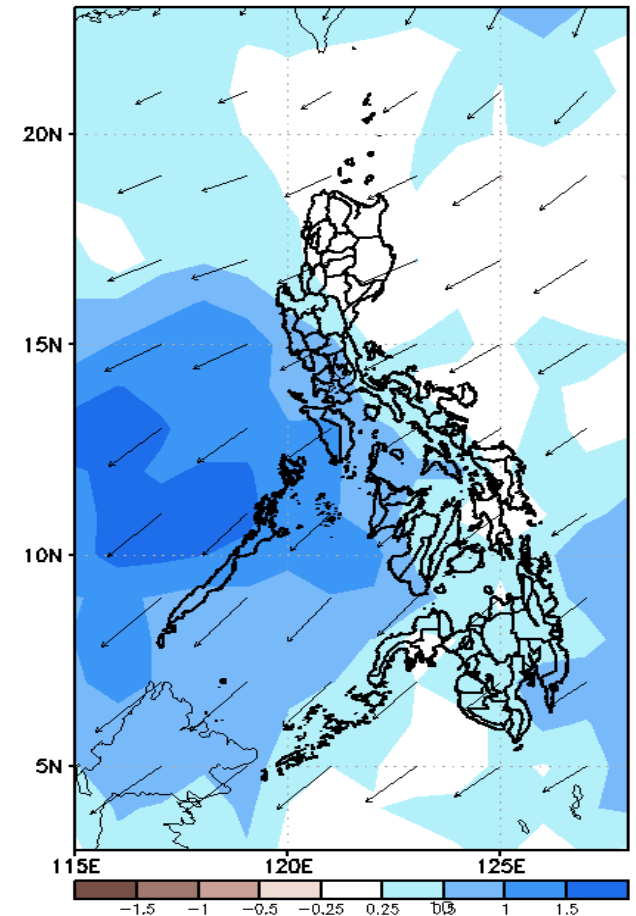
GEFS Week-2 850-hPa Divergence and Wind Anom.
Valid: 20210609 – 20210615



GEFS Week-2 700-hPa Divergence and Wind Anom.
Valid: 20210609 – 20210615



GEFS week-2 200-hPa Divergence and Wind Anom.
Valid: 20210609 – 20210615

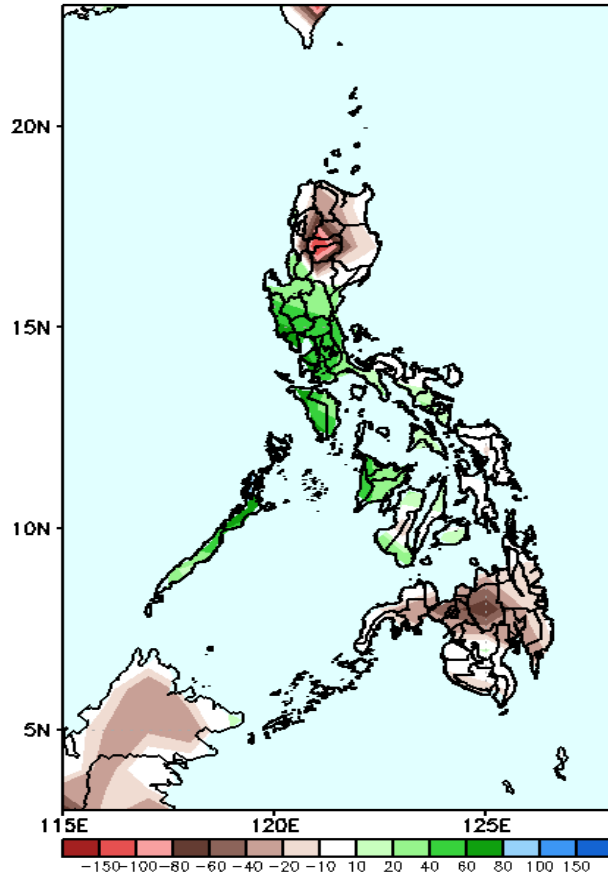


Upper and low level Divergence suggest likelihood of precipitation in parts of the country except most parts of Northern Luzon and Eastern Visayas. Southwest wind flow affecting most parts of the country. Attributing to warm and humid environment during the forecast period.

Precipitation Anomaly and Exceedance Probability > 25/50 mm

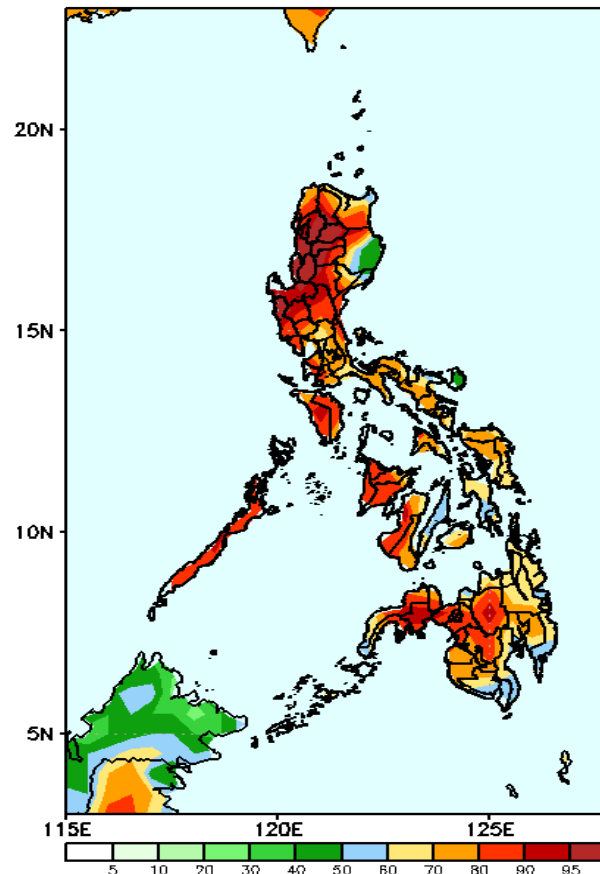
Week 2: June June 09-15, 2021

GEFS Week-2 Precip Anomaly
Valid: 20210609 – 20210615



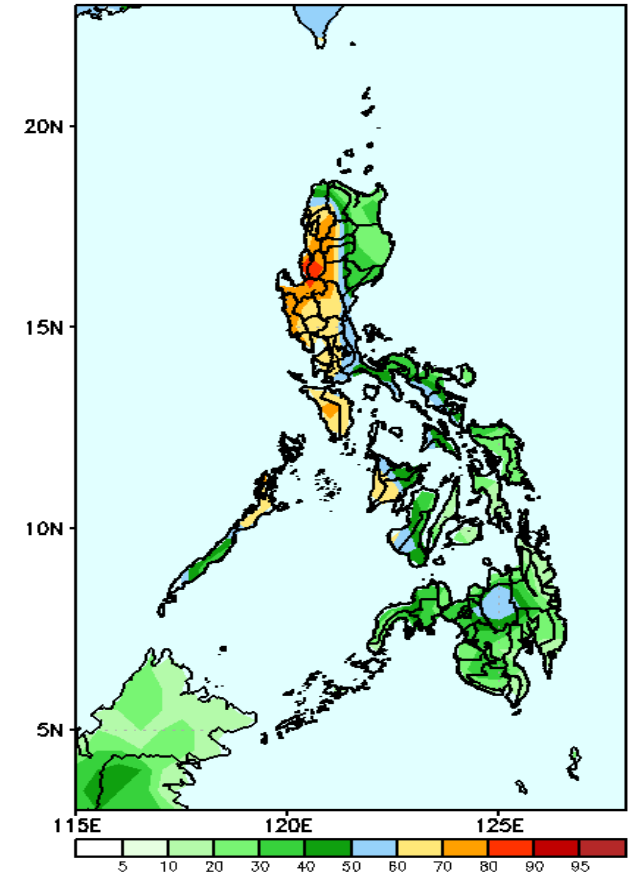
Increase of rainfall of 40-80mm in most parts of Central and Southern Luzon and Visayas while rainfall deficit of up to 100mm in Cordillera Region and 40-80mm in Mindanao.

GEFS Week-2 Exceedance Prob. > 25mm
Valid: 20210609 – 20210615



High probability of rainfall to exceed 25mm in most parts of the country during the forecast period.

GEFS Week-2 Exceedance Prob. > 50mm
Valid: 20210609 – 20210615

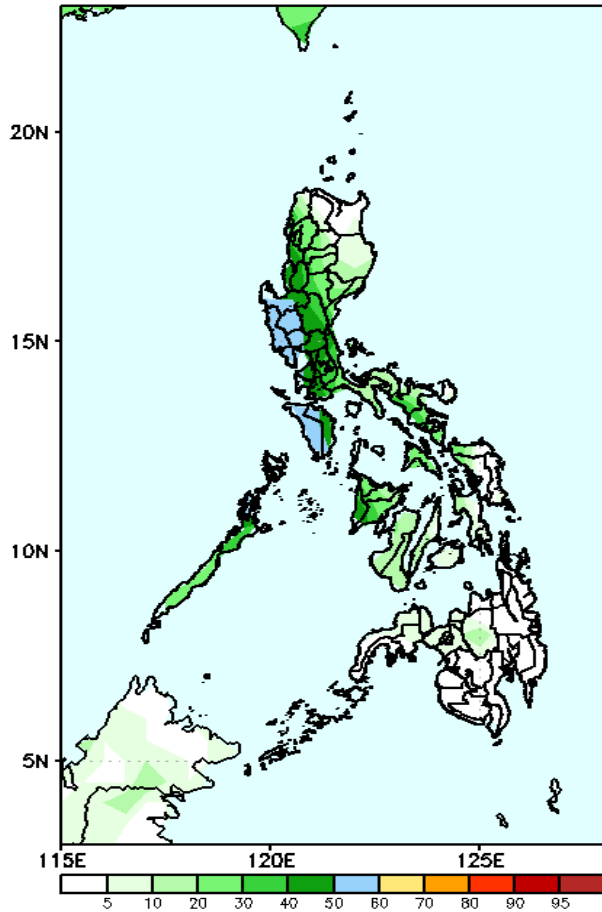


High probability of rainfall to exceed 50mm in most parts of western and central Luzon, Mindoro, Iloilo & Antique while less likely for the rest of the country during the forecast period.

Exceedance Probability > 100/150/200 mm

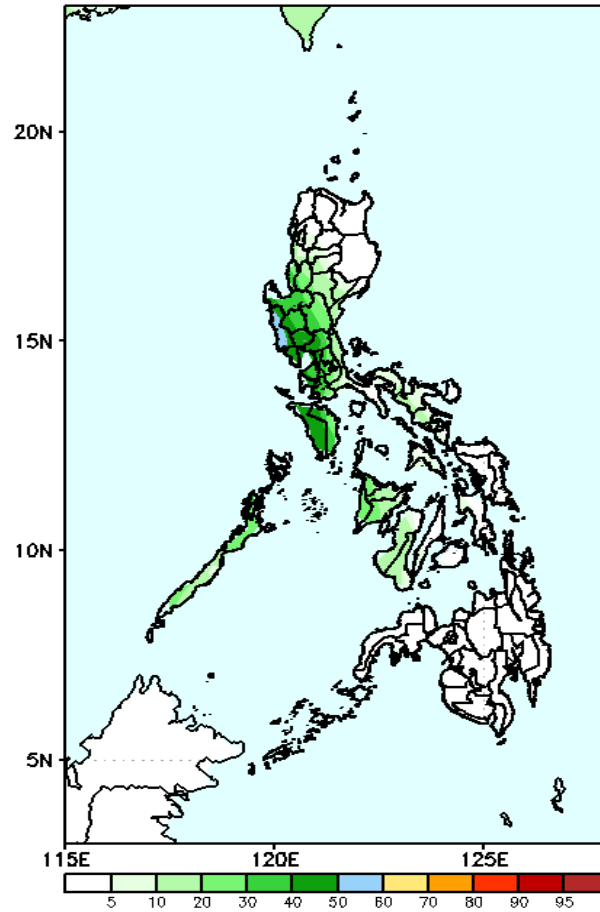
Week 2: June 09-15, 2021

GEFS Week-2 Exceedance Prob. > 100mm
Valid: 20210609 – 20210615



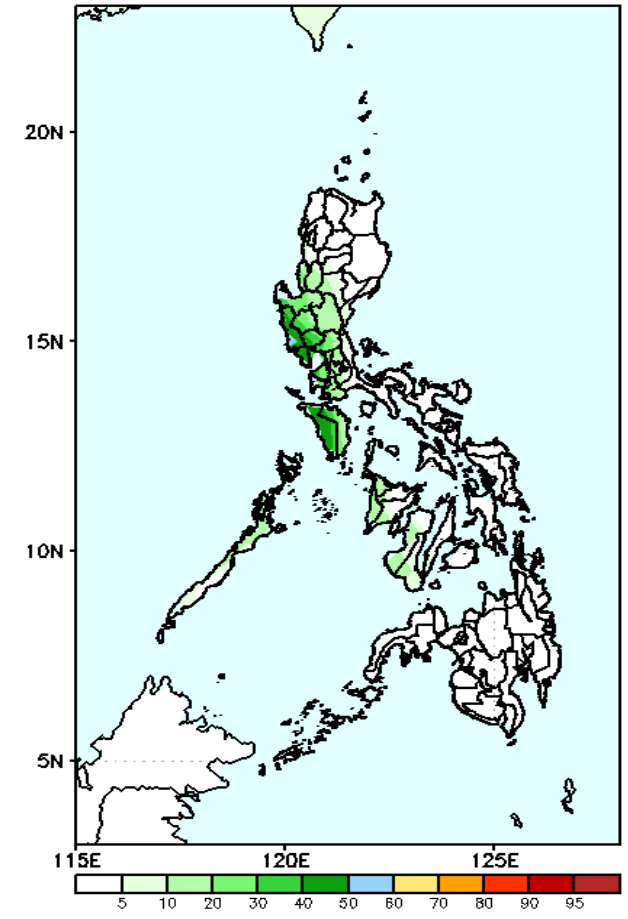
40-60% probability of rainfall to exceed 100mm in most parts of Luzon and Visayas while less likely in Mindanao during the forecast period.

GEFS Week-2 Exceedance Prob. > 150mm
Valid: 20210609 – 20210615



Less probability of rainfall to exceed 150mm in most parts of the country during the forecast period.

GEFS Week-2 Exceedance Prob. > 200mm
Valid: 20210609 – 20210615

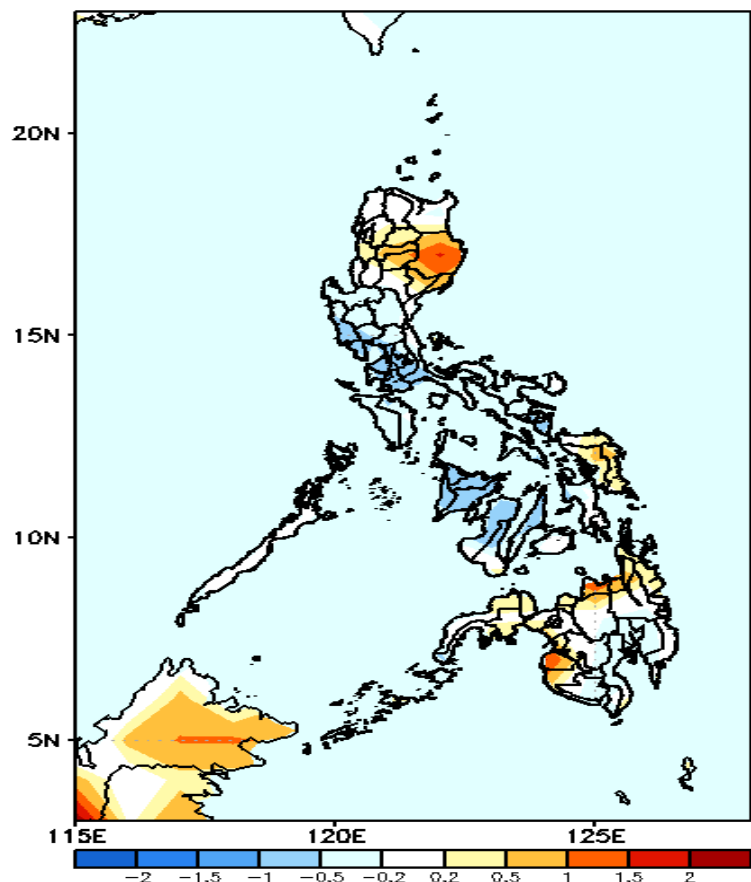


Less probability of rainfall to exceed 200mm in most parts of the country during the forecast period.



GEFS Week-1 & 2 Forecasts: T2m Anomaly

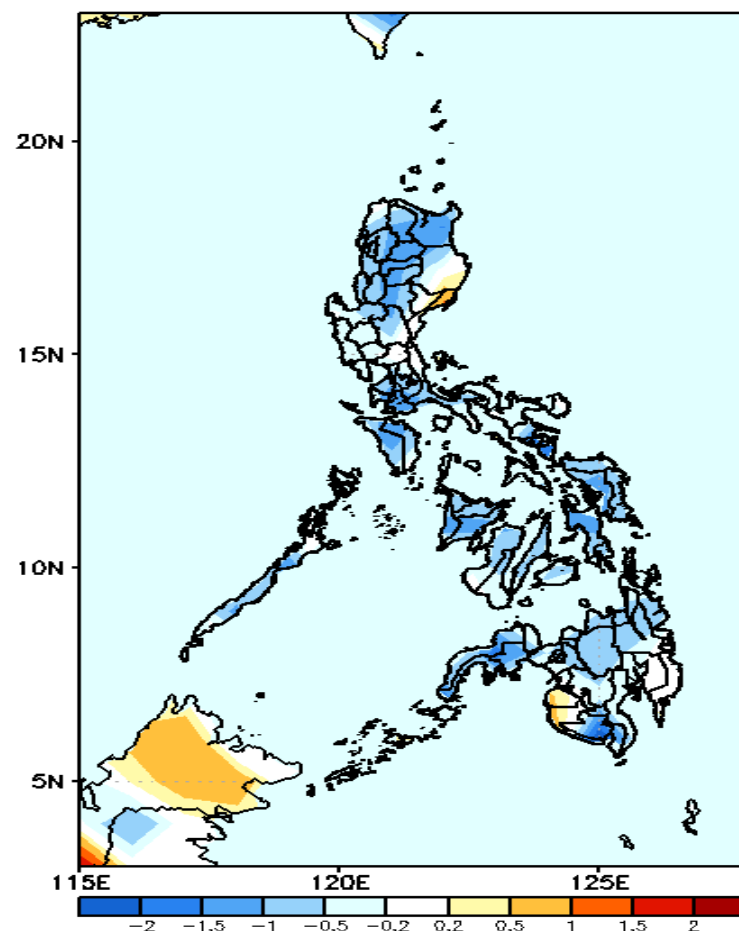
GEFS Week-1 T2m Anomaly
Valid: 20210602 – 20210608



2m Temperature Week 1: June 02-08, 2021

Warmer than average surface air temperature will likely experience in Isabela, Maguindanao, and Misamis Oriental. Average to slightly warmer than average in Cordillera Region, CARAGA, Samar provinces & Zamboanga Peninsula while average to slightly cooler than average temperature for the rest of the country during the forecast period.

GEFS Week-2 T2m Anomaly
Valid: 20210609 – 20210615



2m Temperature Week 2: June 09-15, 2021

Slightly cooler to cooler than average surface air temperature will likely experience in most parts of country except with patches of slightly warmer than average temperature in Aurora, Maguindanao & Sultan Kudarat during the forecast period.

