



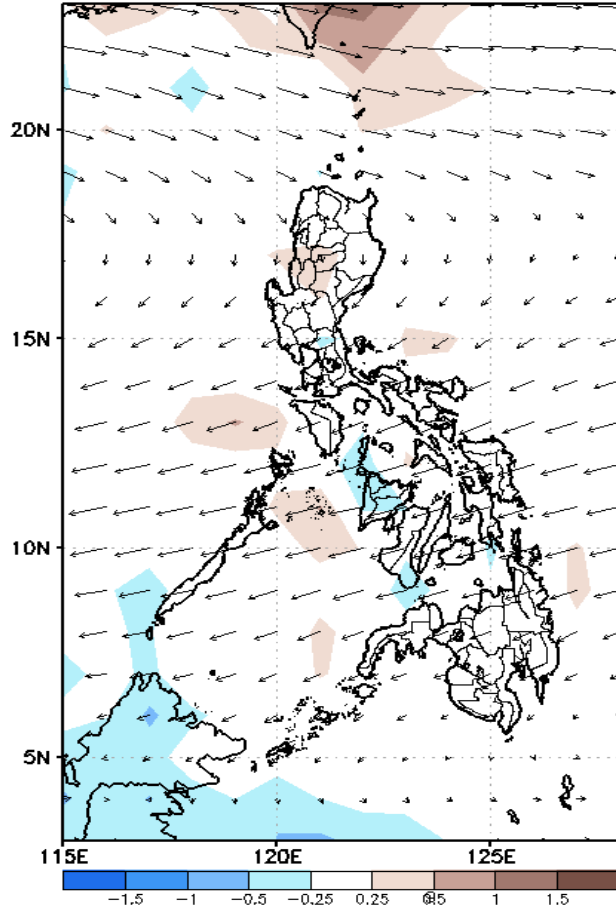
# Week 1 & Week 2 Forecast for the Philippines using GEFS Model



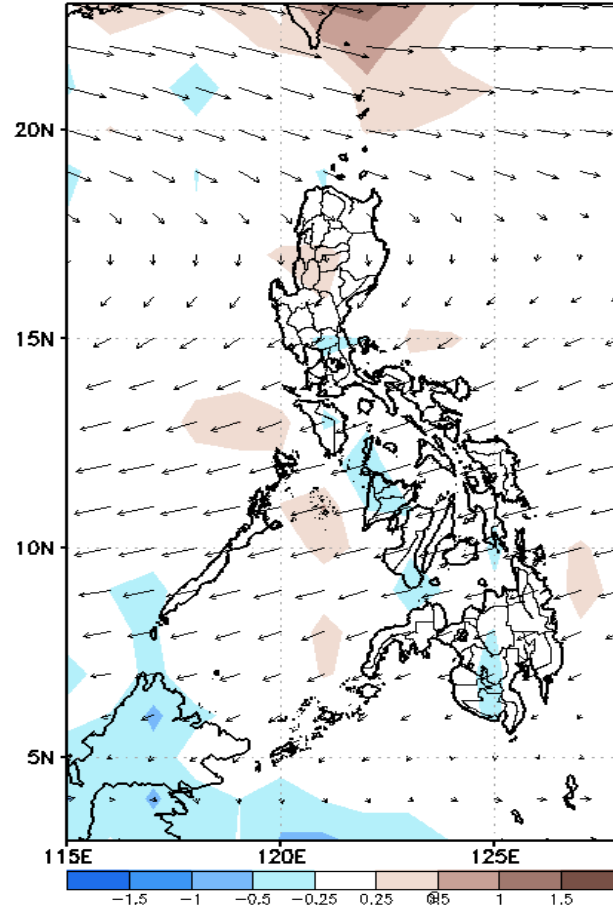
# GEFS Week-1 Forecasts: Divergence & Wind Anomaly

**Week 1: Mar 02-08, 2022**

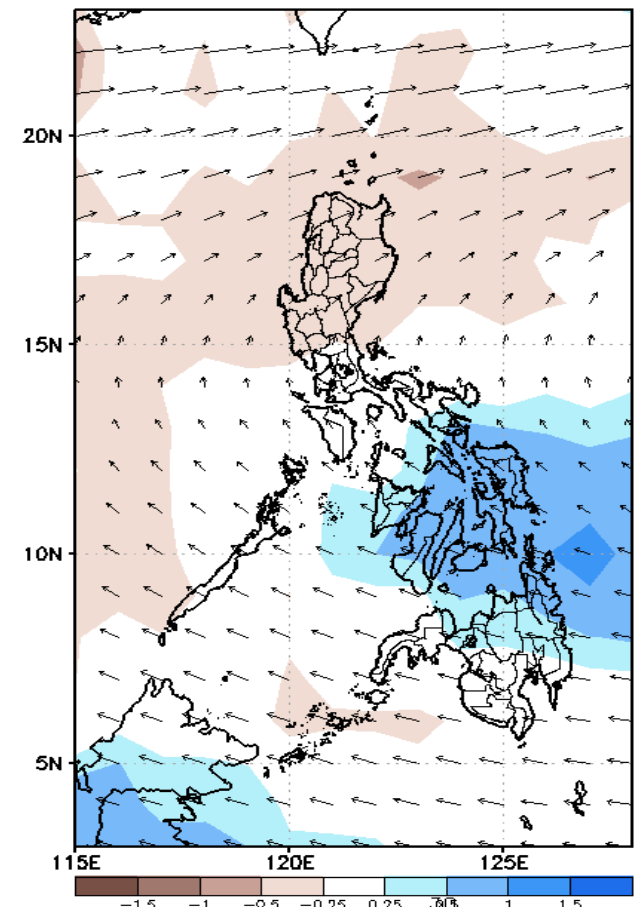
GEFS Week-1 850-hPa Divergence and Wind Anom  
Valid: 20220302 - 20220308



GEFS Week-1 700-hPa Divergence and Wind Anom  
Valid: 20220302 - 20220308



GEFS Week-1 200-hPa Divergence and Wind Anom  
Valid: 20220302 - 20220308

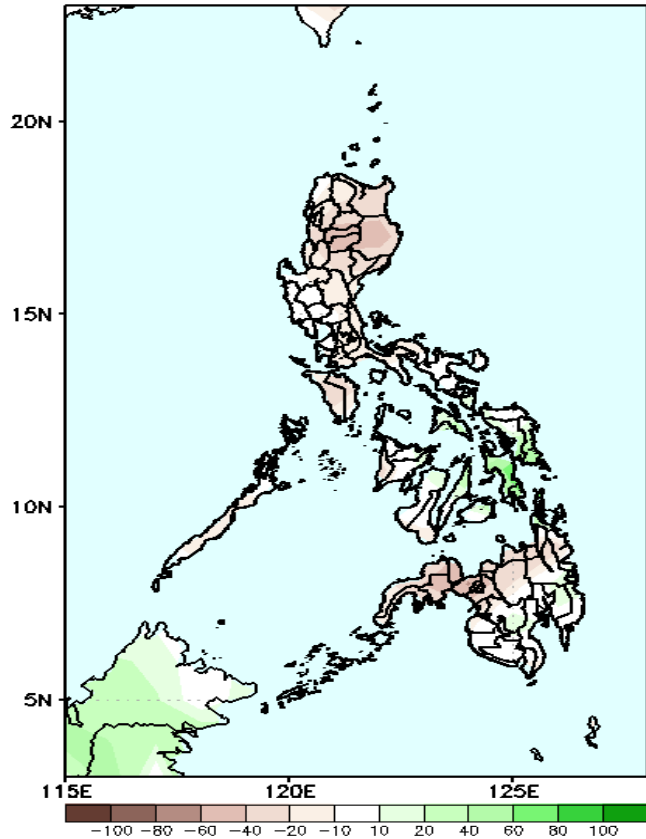


Upper and low level Divergence suggest a likelihood of light to moderate precipitation in Sorsogon, most parts of Visayas and Northern Mindanao. Northeast Monsoon affecting Northern Luzon while Easterlies affecting the rest of the country during the forecast period.

# Precipitation Anomaly and Exceedance Probability > 25/50 mm

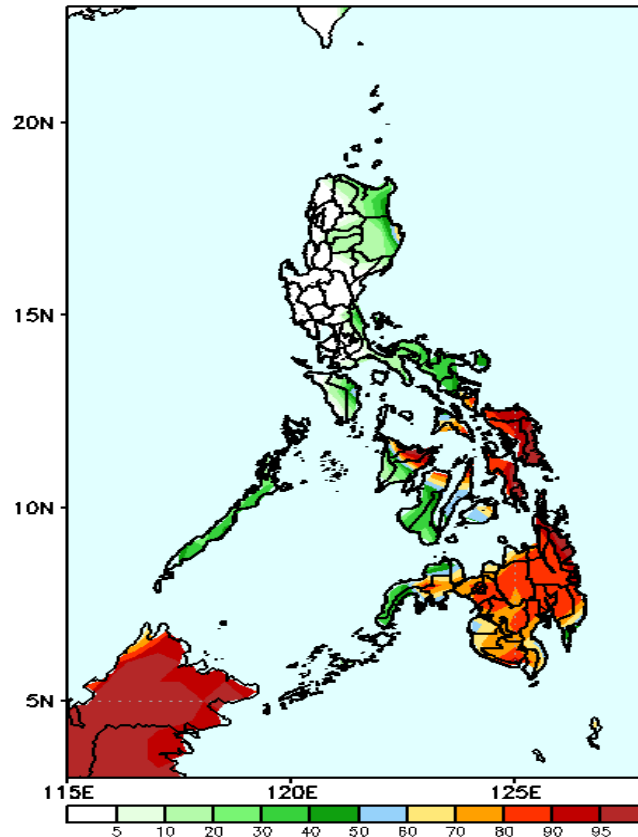
Week 1: Mar 02-08, 2022

GEFS Week-1 Precip Anomaly  
Valid: 20220302 - 20220308



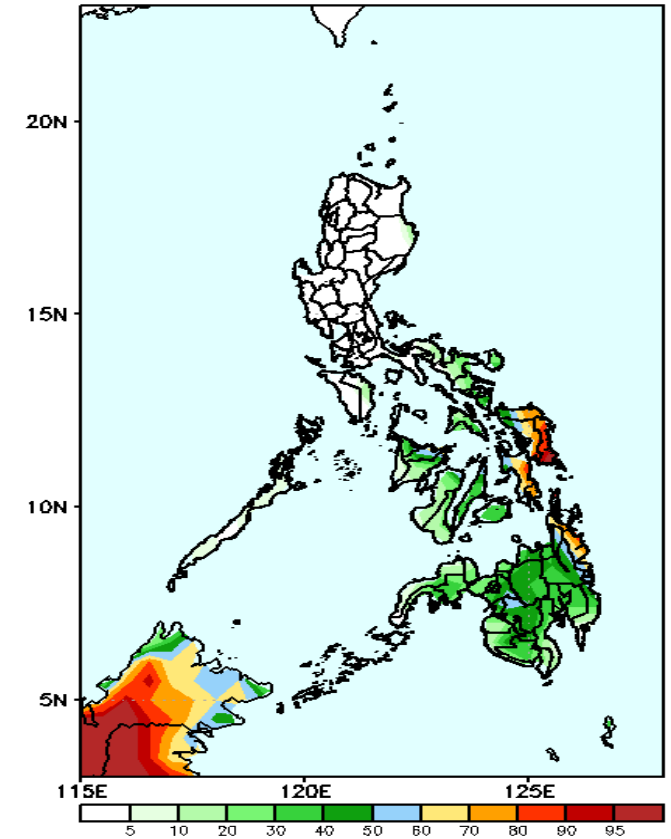
Rainfall deficit of 10-40mm in most parts of the country is expected except in Eastern Samar and Southern Leyte where there is 40-80mm. increase of rainfall during the forecast period.

GEFS Week-1 Exceedance Prob. > 25mm  
Valid: 20220302 - 20220308



High probability of rainfall to exceed 25mm in Sorsogon, Masbate, eastern Panay, and most parts of Eastern Visayas and Mindanao while less likely for the rest of the country during the forecast period.

GEFS Week-1 Exceedance Prob. > 50mm  
Valid: 20220302 - 20220308



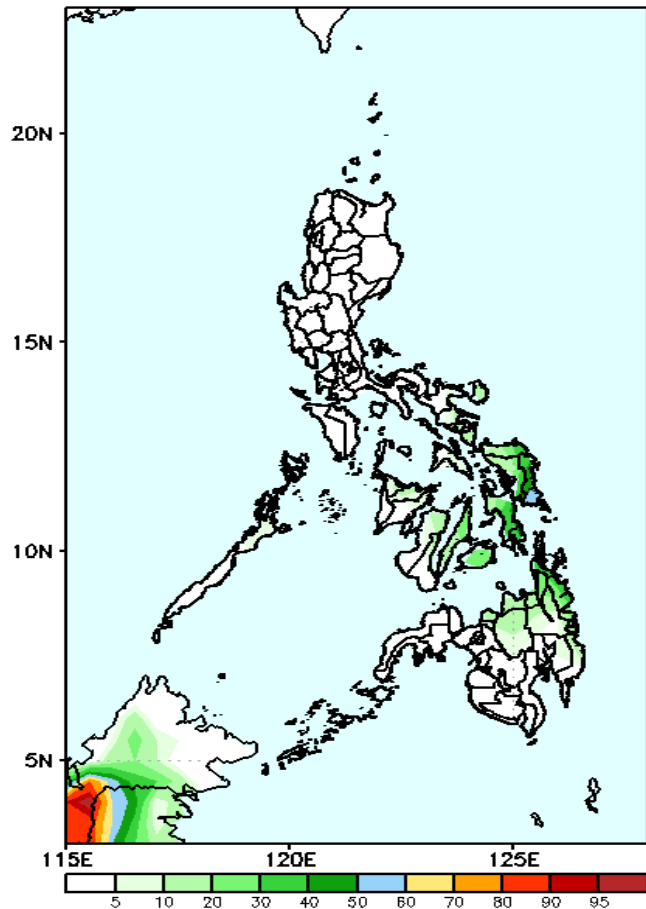
70-95% probability of rainfall to exceed 50mm in Eastern Visayas and Surigao del Sur while less likely for the rest of the country during the forecast period.



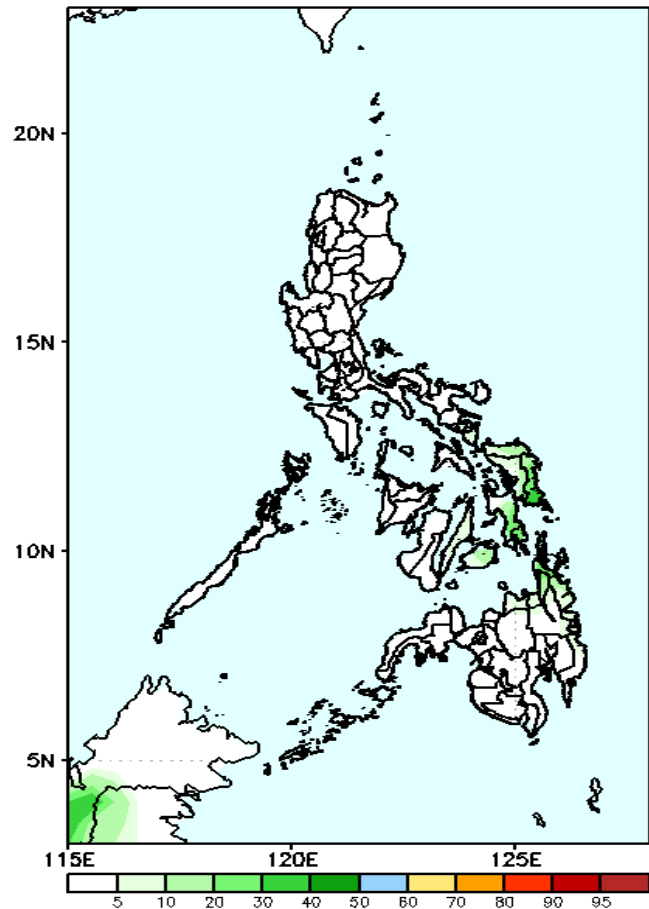
# Exceedance Probability > 100/150/200 mm

**Week 1: Mar 02-08, 2022**

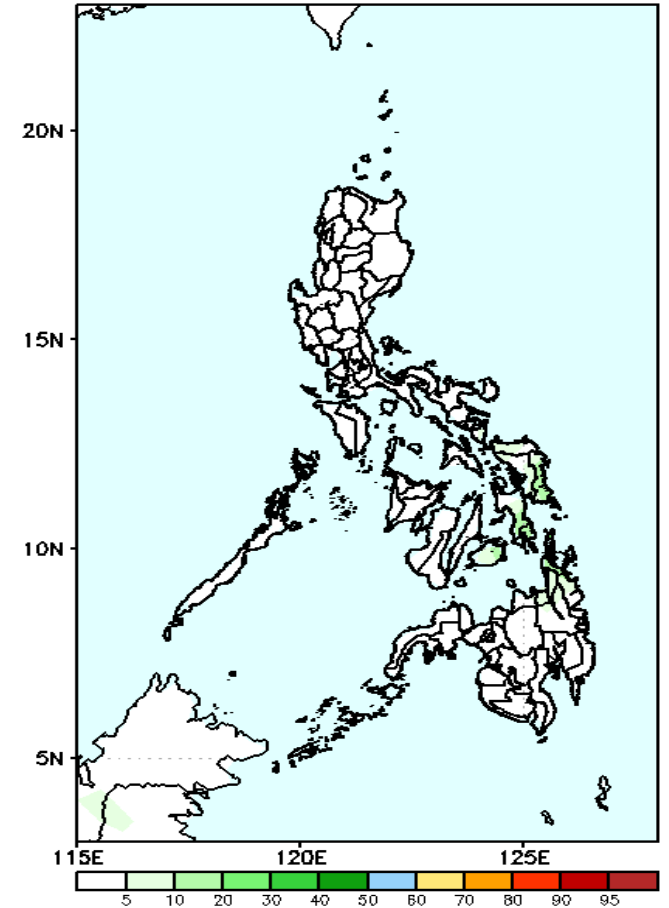
GEFS Week-1 Exceedance Prob. > 100mm  
Valid: 20220302 – 20220308



GEFS Week-1 Exceedance Prob. > 150mm  
Valid: 20220302 – 20220308



GEFS Week-1 Exceedance Prob. > 200mm  
Valid: 20220302 – 20220308



Low probability of rainfall to exceed 100mm in most parts of the country during the forecast period.

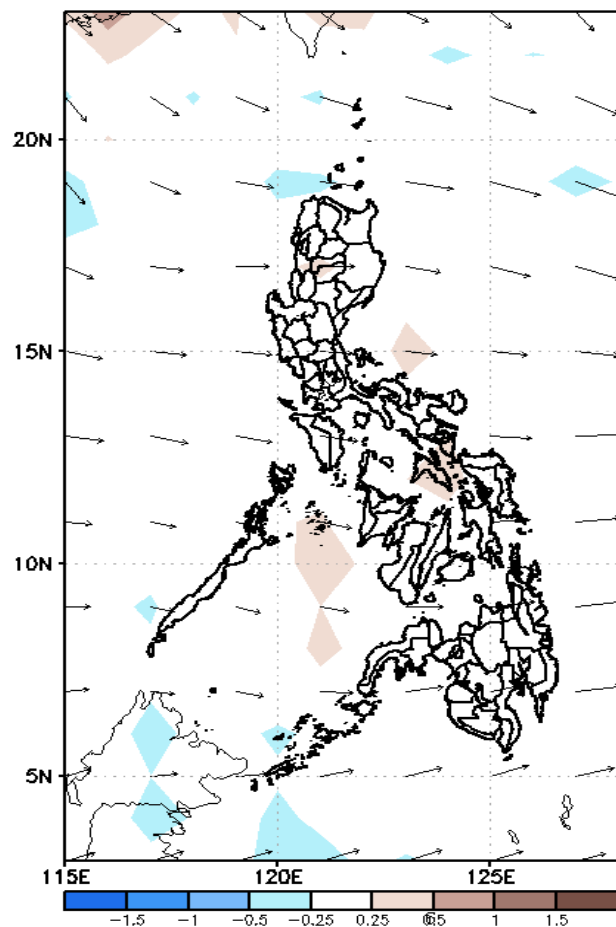
Low probability of rainfall to exceed 150mm in most parts of the country during the forecast period.

Low probability of rainfall to exceed 200mm in most parts of the country during the forecast period.

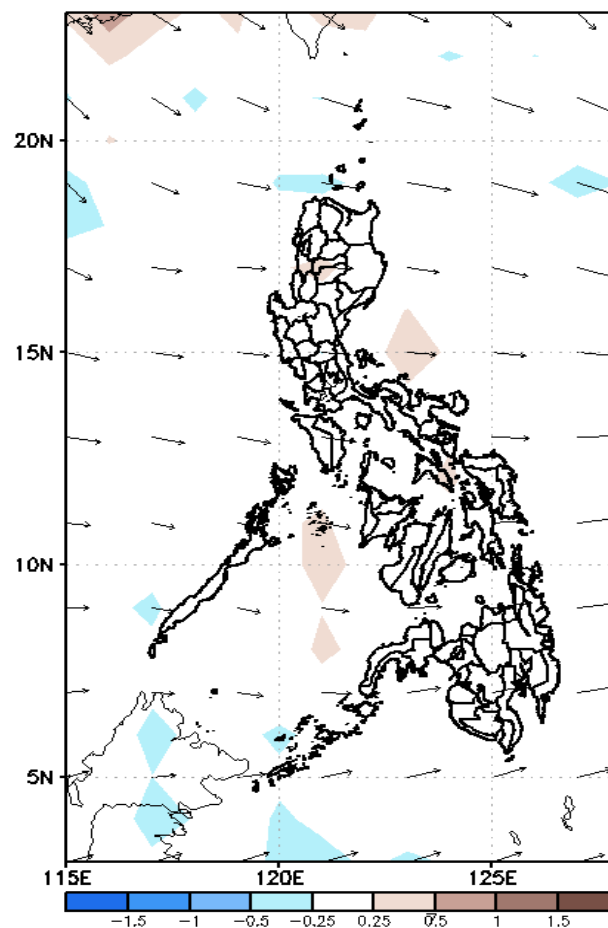
# GEFS Week-2 Forecasts: Divergence & Wind Anomaly

**Week 2: Mar 09-15, 2022**

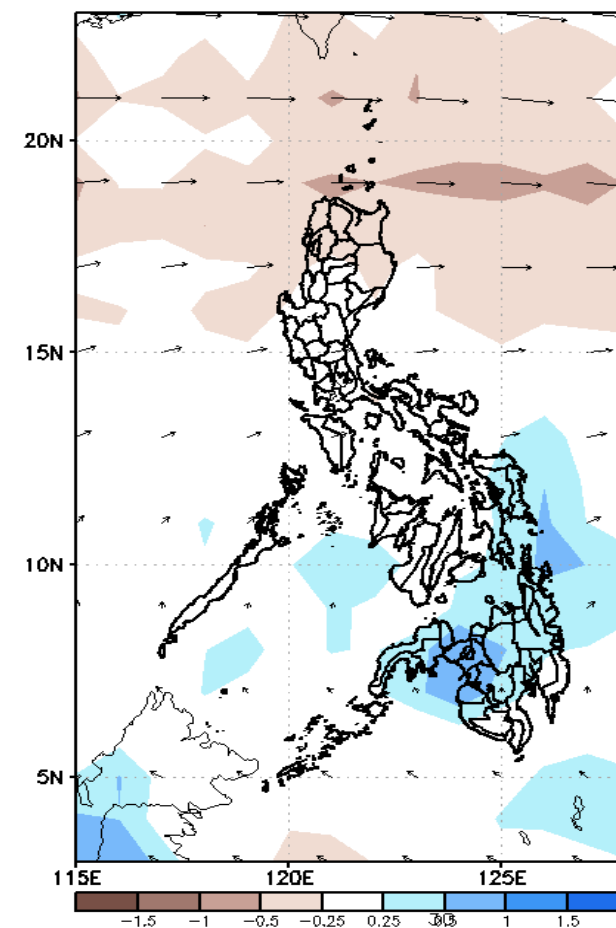
GEFS Week-2 850-hPa Divergence and Wind Anom  
Valid: 20220309 - 20220315



GEFS Week-2 700-hPa Divergence and Wind Anom  
Valid: 20220309 - 20220315



GEFS week-2 200-hPa Divergence and Wind Anom  
Valid: 20220309 - 20220315

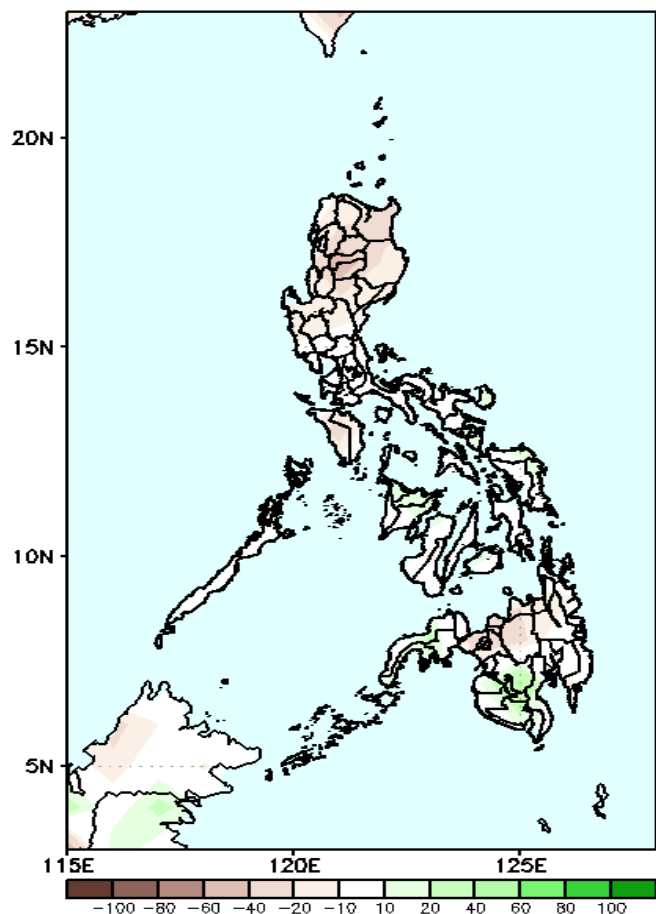


Upper and low level Divergence suggest a likelihood of light to moderate precipitation in most parts of Eastern Visayas and most parts of Mindanao. Easterlies affecting most parts of the country during the forecast period.

# Precipitation Anomaly and Exceedance Probability > 25/50 mm

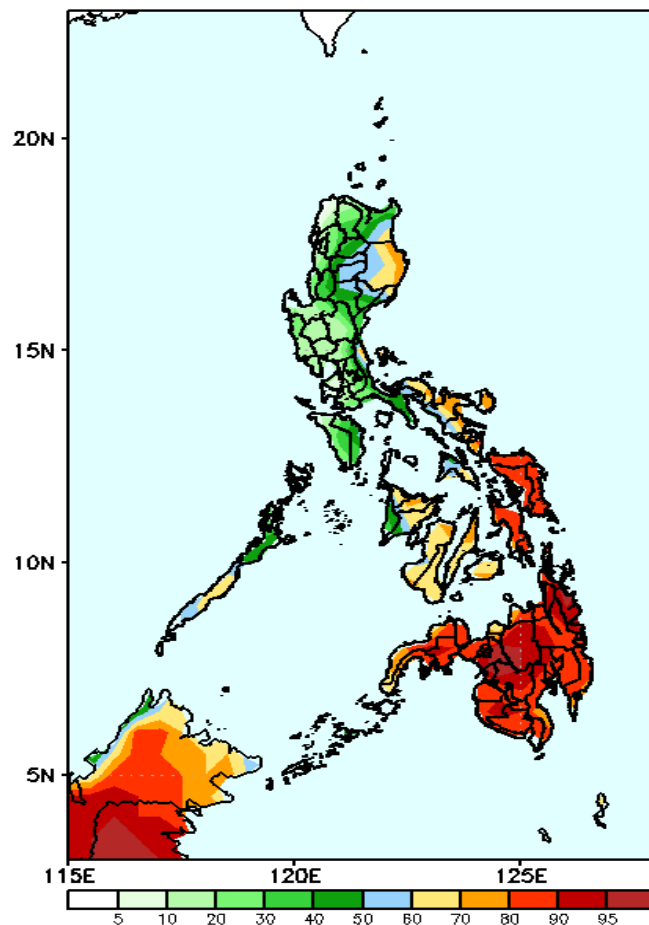
**Week 2: Mar 09-15, 2022**

GEFS Week-2 Precip Anomaly  
Valid: 20220309 - 20220315



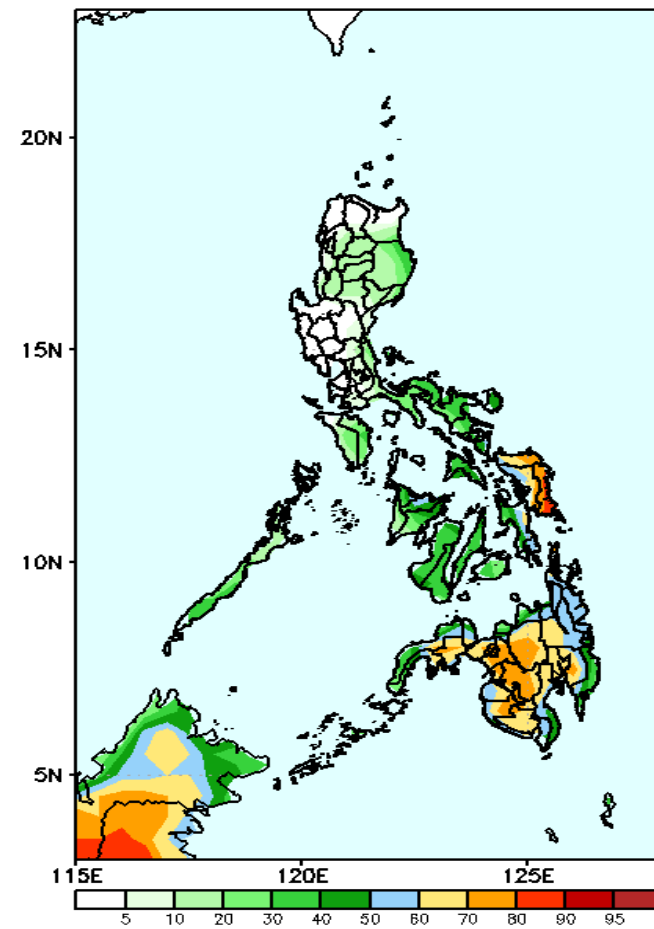
Rainfall deficit of 10-40mm in most parts of the country is expected except in southwestern Mindanao where there is 20-40mm. increase of rainfall during the forecast period.

GEFS Week-2 Exceedance Prob. > 25mm  
Valid: 20220309 - 20220315



High probability of rainfall to exceed 25mm in most parts Eastern Visayas and Mindanao while less likely for the rest of the country during the forecast period.

GEFS Week-2 Exceedance Prob. > 50mm  
Valid: 20220309 - 20220315



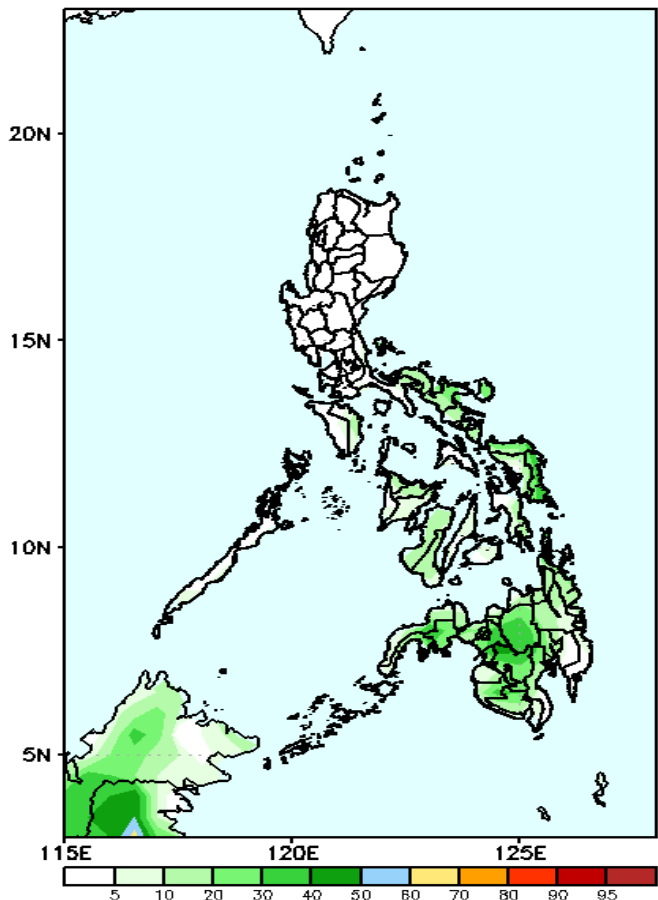
60-85% probability of rainfall to exceed 50mm in Northern & Eastern Samar and most parts of Mindanao while less likely for the rest of the country during the forecast period



# Exceedance Probability > 100/150/200 mm

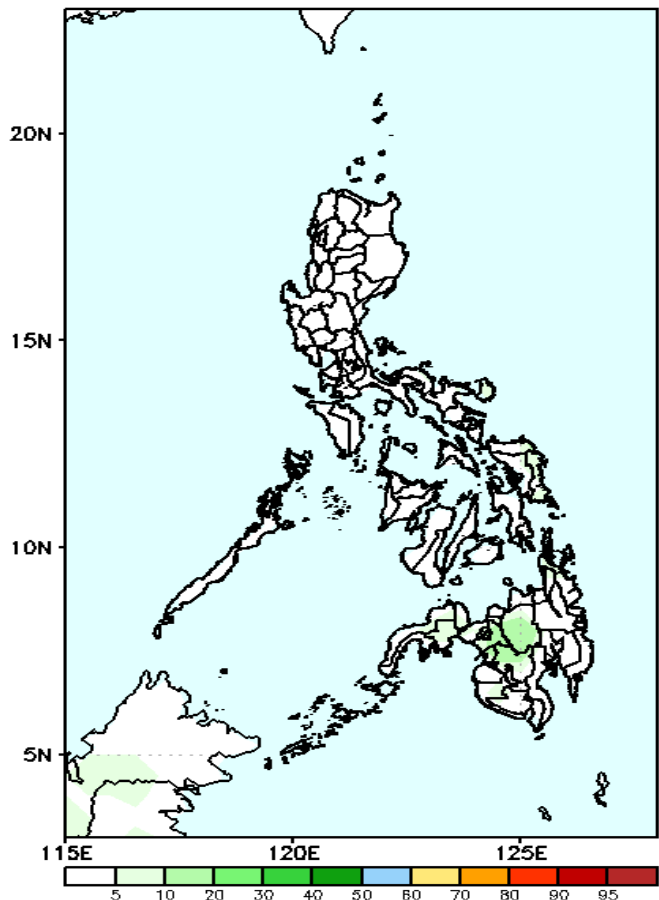
**Week 2: Mar 09-15, 2022**

GEFS Week-2 Exceedance Prob. > 100mm  
Valid: 20220309 – 20220315



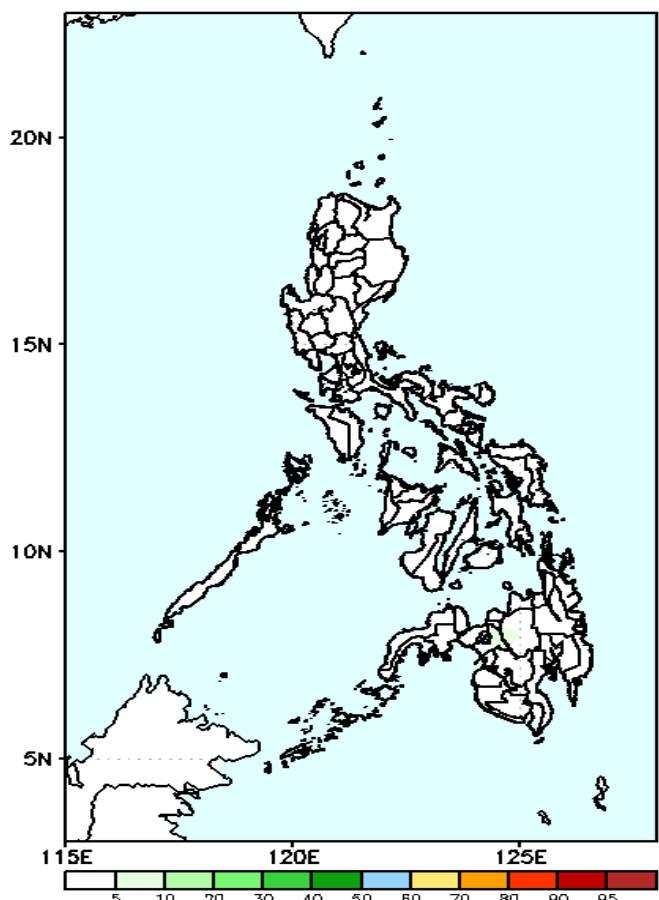
Low probability of rainfall to exceed 100mm in most parts of the country during the forecast period.

GEFS Week-2 Exceedance Prob. > 150mm  
Valid: 20220309 – 20220315



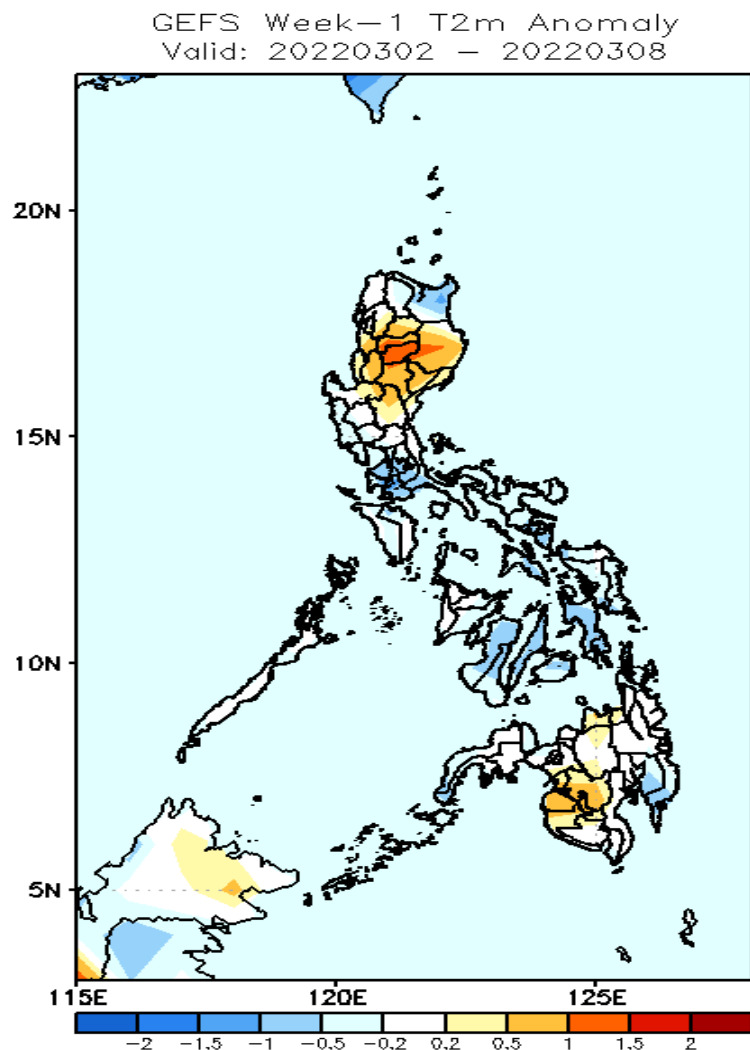
Low probability of rainfall to exceed 150mm in most parts of the country during the forecast period.

GEFS Week-2 Exceedance Prob. > 200mm  
Valid: 20220309 – 20220315



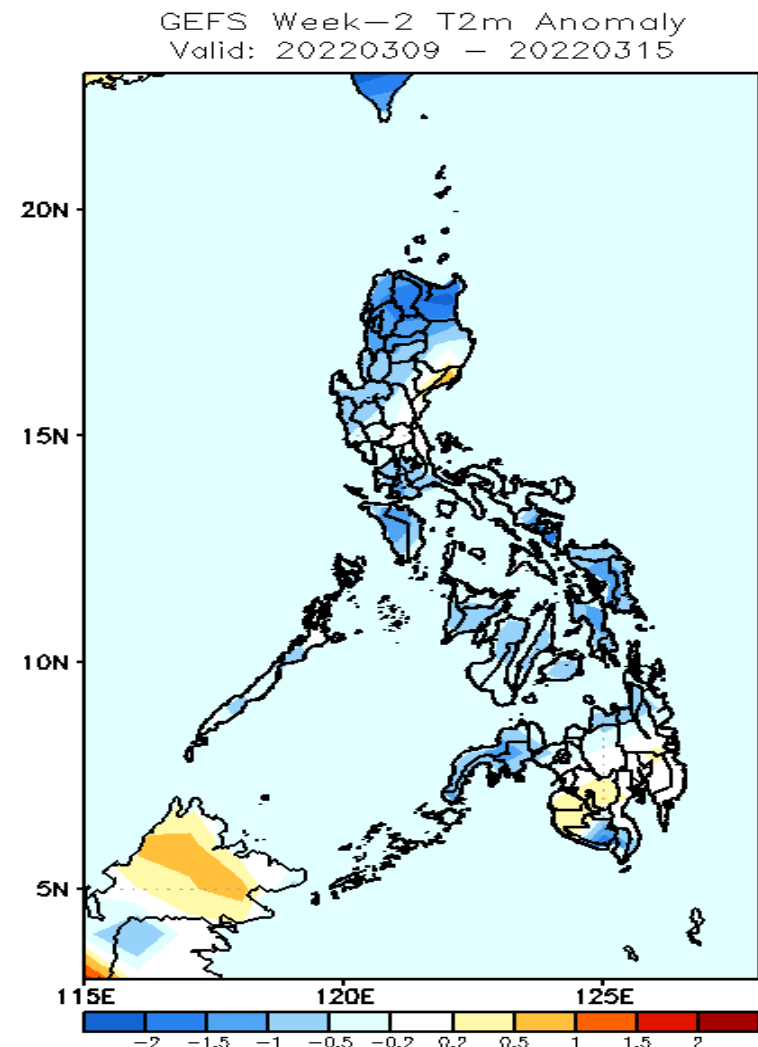
Low probability of rainfall to exceed 200mm in most parts of the country during the forecast period.

# GEFS Week-1 & 2 Forecasts: T2m Anomaly



## 2m Temperature Week 1: Mar 02-08, 2022

Slightly warmer to warmer than average surface air temperature will likely experience in most parts of Ilocos Region, Cordillera Region, Cagayan Valley, North Cotabato and Maguindanao while average to slightly cooler temperature for the rest of the country during the forecast period.



## 2m Temperature Week 2: Mar 09-15, 2022

Slightly cooler to cooler than average surface air temperature will likely experience in most parts of the country during the forecast period.