



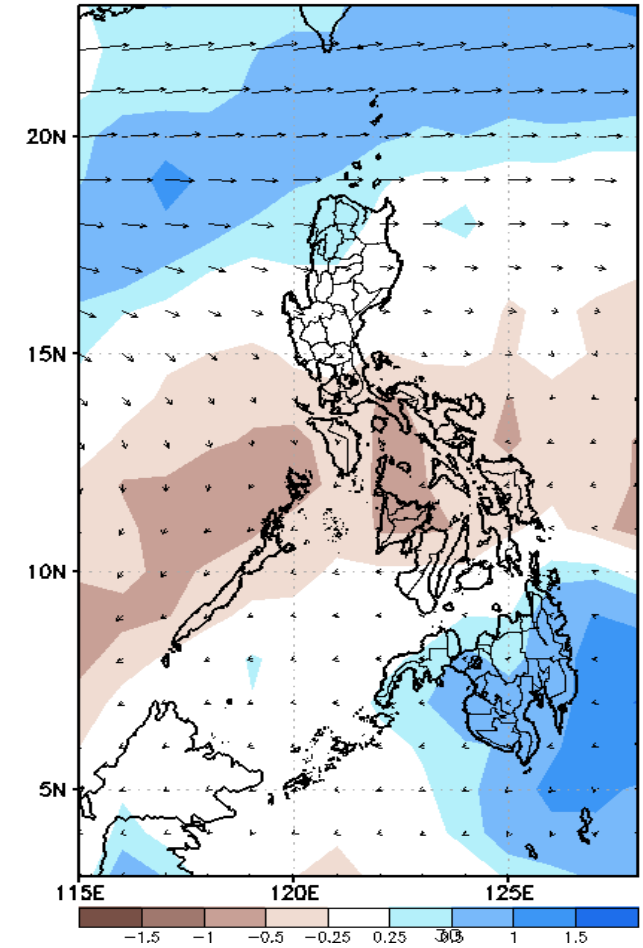
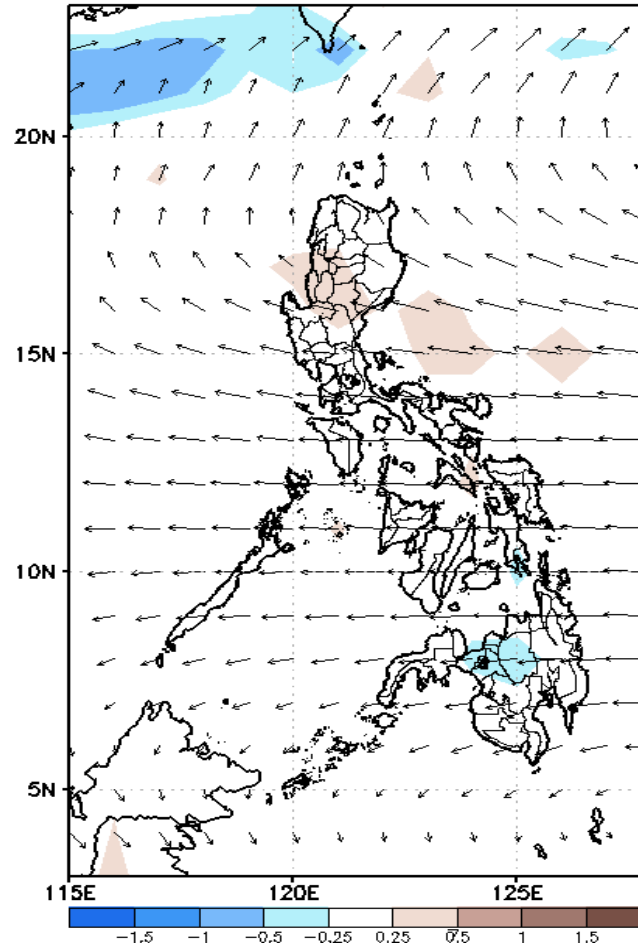
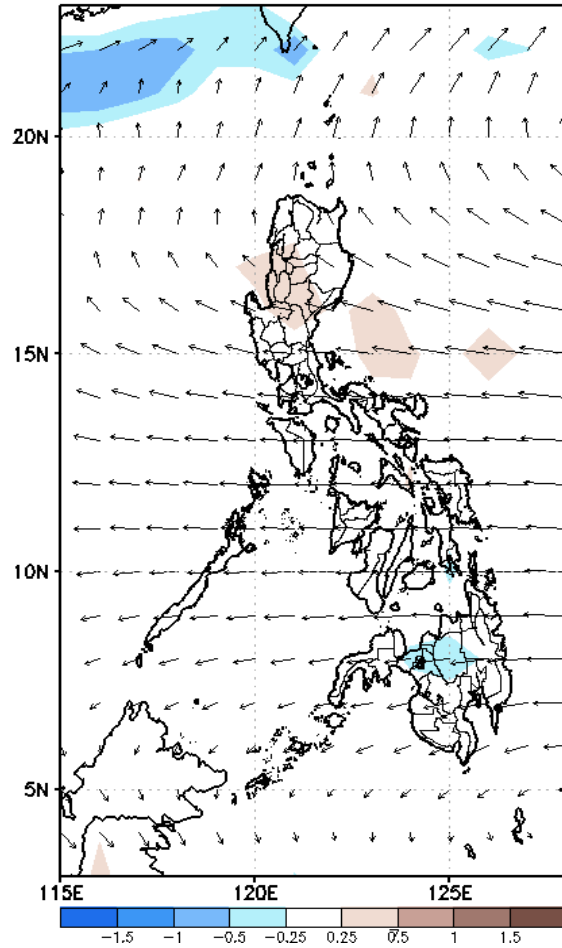
Week 1 & Week 2 Forecast for the Philippines using GEFS Model



GEFS Week-1 Forecasts: Divergence & Wind Anomaly

Week 1: May 02-08, 2022

GEFS Week-1 850-hPa Divergence and Wind Anom
Valid: 20220502 - 20220508

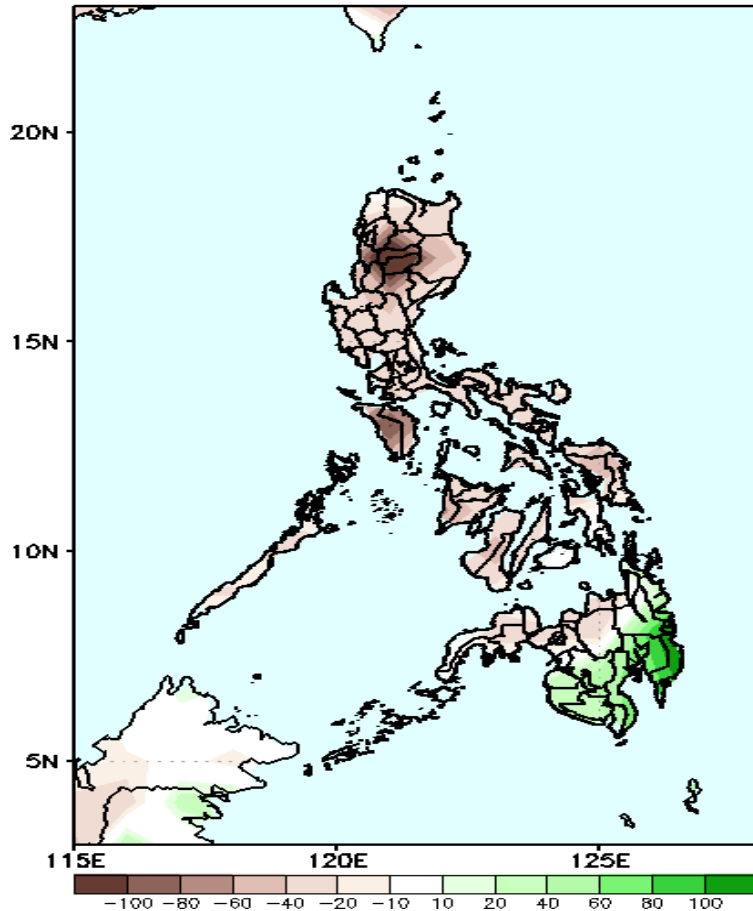


Upper and low level Divergence suggest a likelihood of light to moderate precipitation in Ilocos Region, some parts of CAR and most parts of Mindanao. Easterlies affecting most parts of the country attributing to warmer temperatures during the forecast period.

Precipitation Anomaly and Exceedance Probability > 25/50 mm

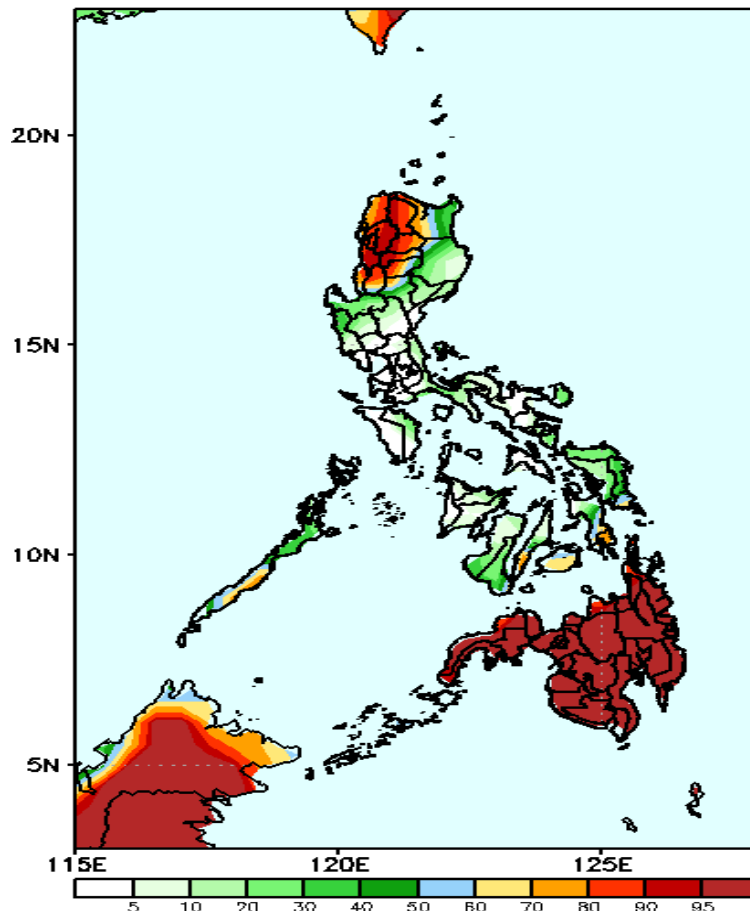
Week 1: May 02-08, 2022

GEFS Week-1 Precip Anomaly
Valid: 20220502 - 20220508



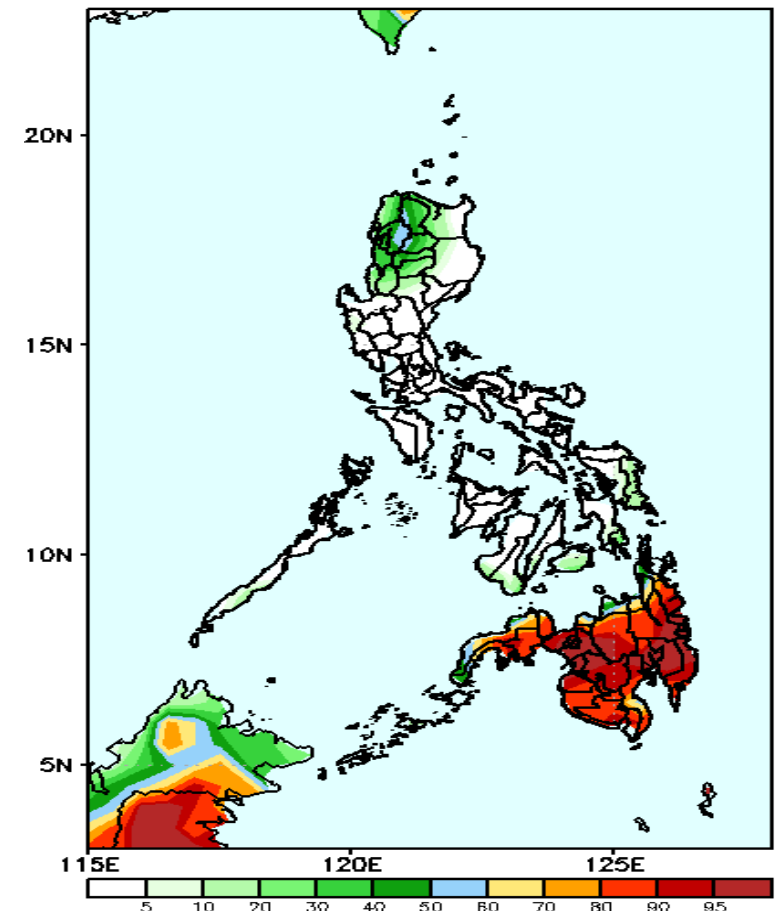
Rainfall deficit of 50-100mm in most parts of the country except in southern Mindanao where there is 40-50mm increase of rainfall during the forecast period.

GEFS Week-1 Exceedance Prob. > 25mm
Valid: 20220502 - 20220508



High probability of rainfall to exceed 25mm in Ilocos provinces, La Union, most parts of Cordillera region, some parts of Visayas and most parts of Mindanao while less likely for the rest of the county during the forecast period.

GEFS Week-1 Exceedance Prob. > 50mm
Valid: 20220502 - 20220508



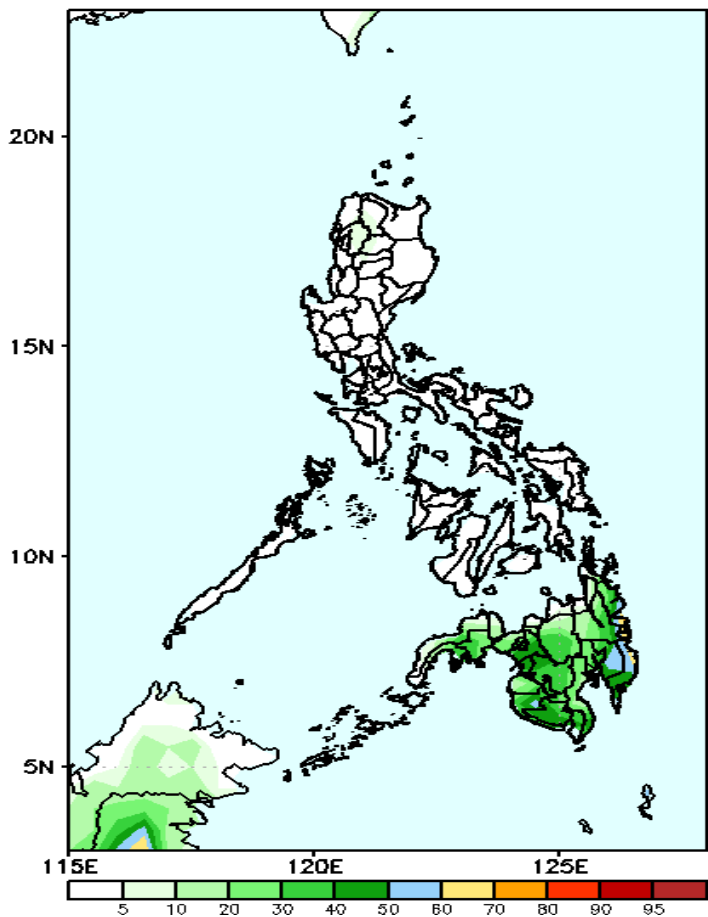
High probability of rainfall to exceed 50mm in most parts of Mindanao while less likely for the rest of the county during the forecast period.



Exceedance Probability > 100/150/200 mm

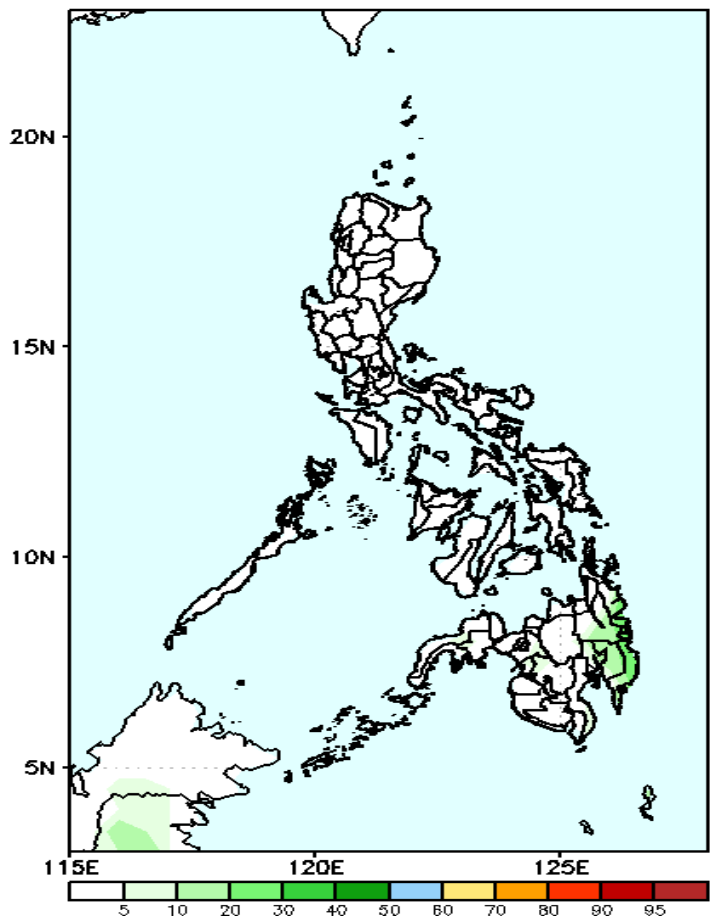
Week 1: May 02-08, 2022

GEFS Week-1 Exceedance Prob. > 100mm
Valid: 20220502 - 20220508



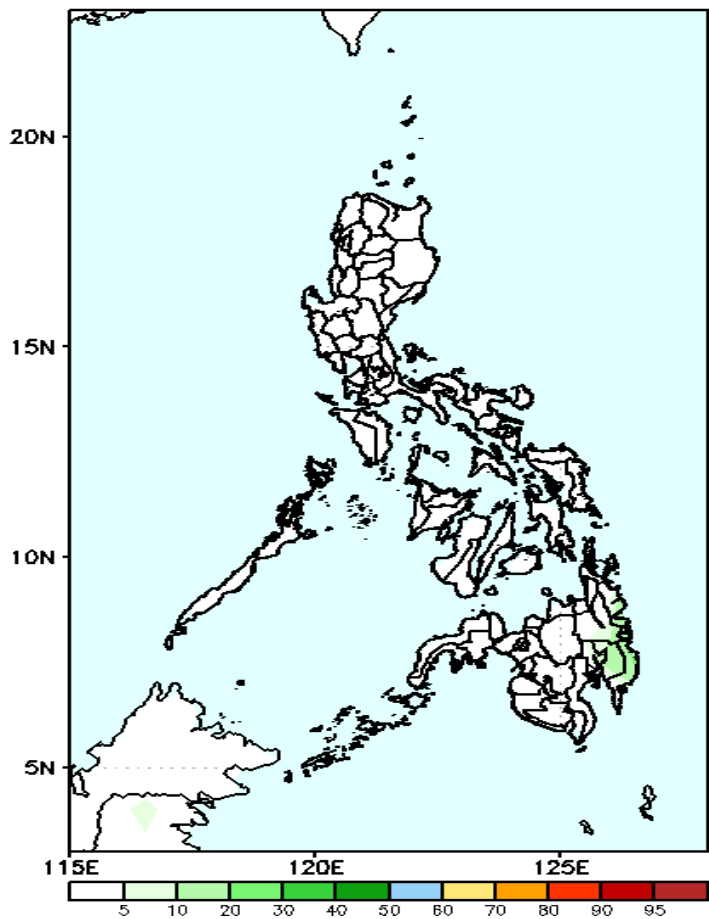
Low probability of rainfall to exceed 100mm in most parts of the country during the forecast period.

GEFS Week-1 Exceedance Prob. > 150mm
Valid: 20220502 - 20220508



Low probability of rainfall to exceed 150mm in most parts of the country during the forecast period.

GEFS Week-1 Exceedance Prob. > 200mm
Valid: 20220502 - 20220508



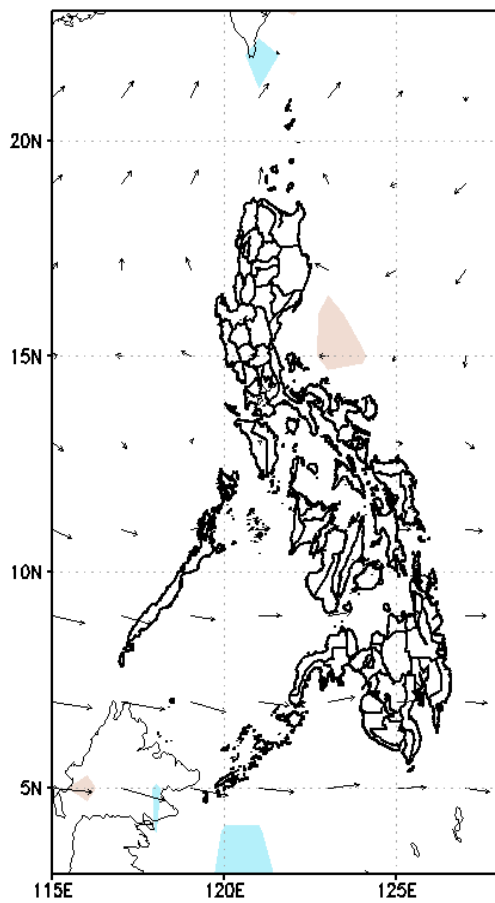
Low probability of rainfall to exceed 200mm in most parts of the country during the forecast period.



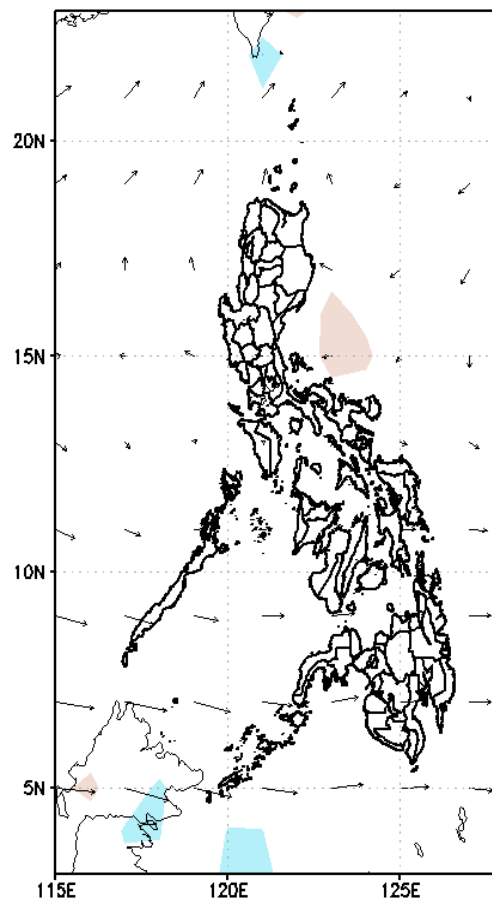
GEFS Week-2 Forecasts: Divergence & Wind Anomaly

Week 2: May 09-15, 2022

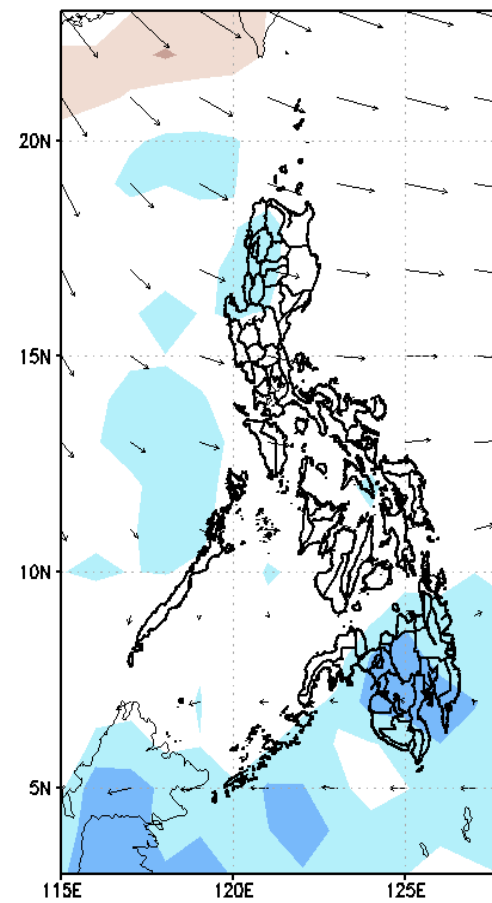
GEFS Week-2 850-hPa Divergence and Wind Anomaly
Valid: 20220509 - 20220515



GEFS Week-2 700-hPa Divergence and Wind Anomaly
Valid: 20220509 - 20220515



GEFS week-2 200-hPa Divergence and Wind Anomaly
Valid: 20220509 - 20220515

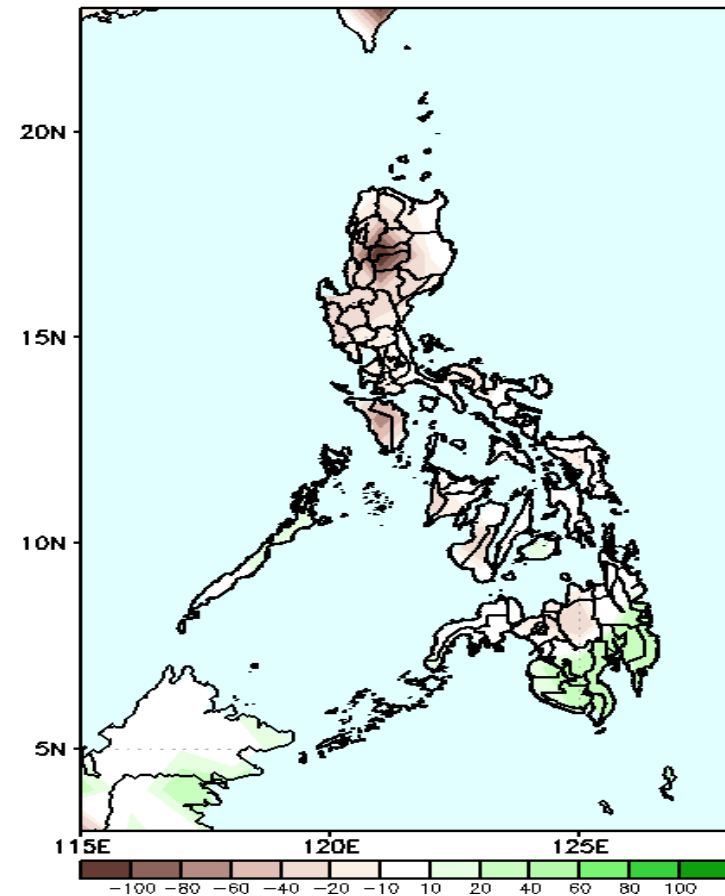


Upper and low level Divergence suggest a likelihood of light to moderate precipitation in most parts of Ilocos and Cordillera Region and most parts of Mindanao. Easterlies affecting most parts of the country attributing to warmer temperatures during the forecast period.

Precipitation Anomaly and Exceedance Probability > 25/50 mm

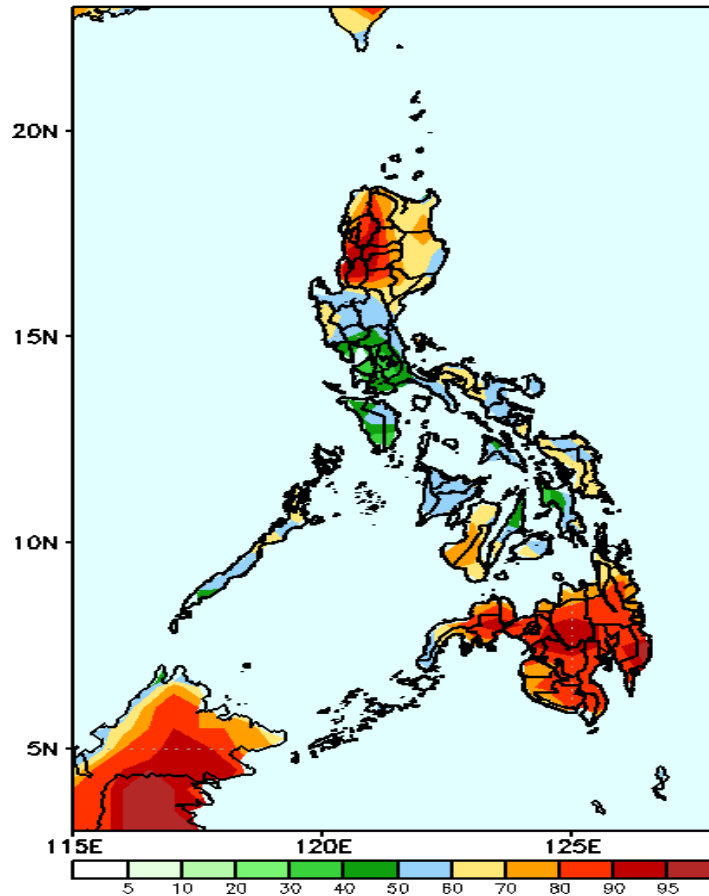
Week 2: May 09-15, 2022

GEFS Week-2 Precip Anomaly
Valid: 20220509 - 20220515



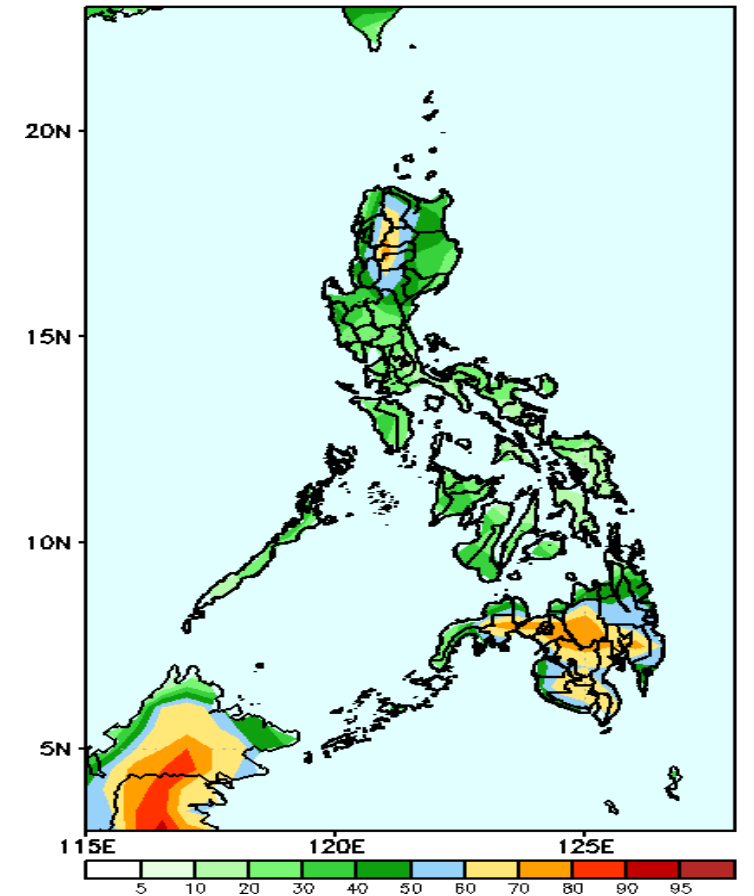
Rainfall deficit of 40-100mm in Cordillera Region and Mindoro during the forecast period.

GEFS Week-2 Exceedance Prob. > 25mm
Valid: 20220509 - 20220515



High probability of rainfall to exceed 25mm in most parts of the country except for some areas in Luzon during the forecast period.

GEFS Week-2 Exceedance Prob. > 50mm
Valid: 20220509 - 20220515



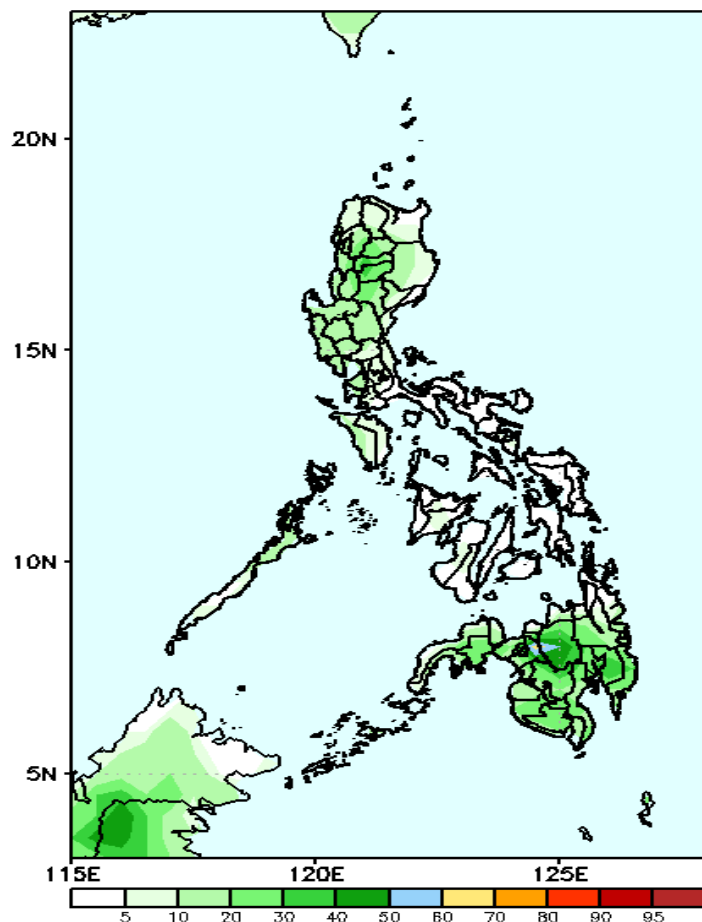
High probability of rainfall to exceed 50mm in some parts of Cordillera region and most parts of Mindanao while less likely for the rest of the country during the forecast period



Exceedance Probability > 100/150/200 mm

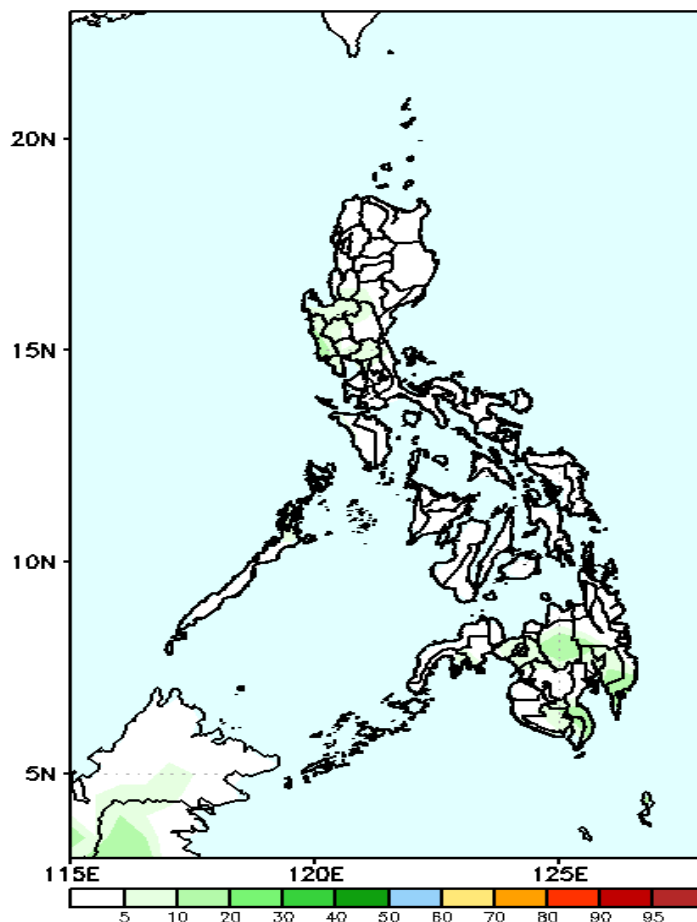
Week 2: May 09-15, 2022

GEFS Week-2 Exceedance Prob. > 100mm
Valid: 20220509 – 20220515



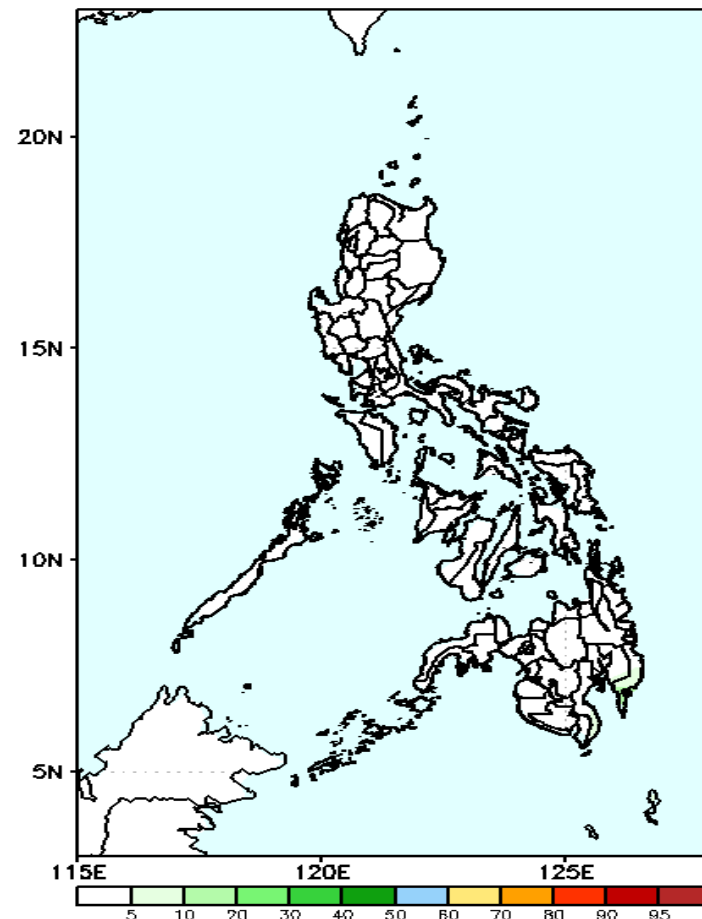
Low probability of rainfall to exceed 100mm in most parts of the country during the forecast period.

GEFS Week-2 Exceedance Prob. > 150mm
Valid: 20220509 – 20220515



Low probability of rainfall to exceed 150mm in most parts of the country during the forecast period.

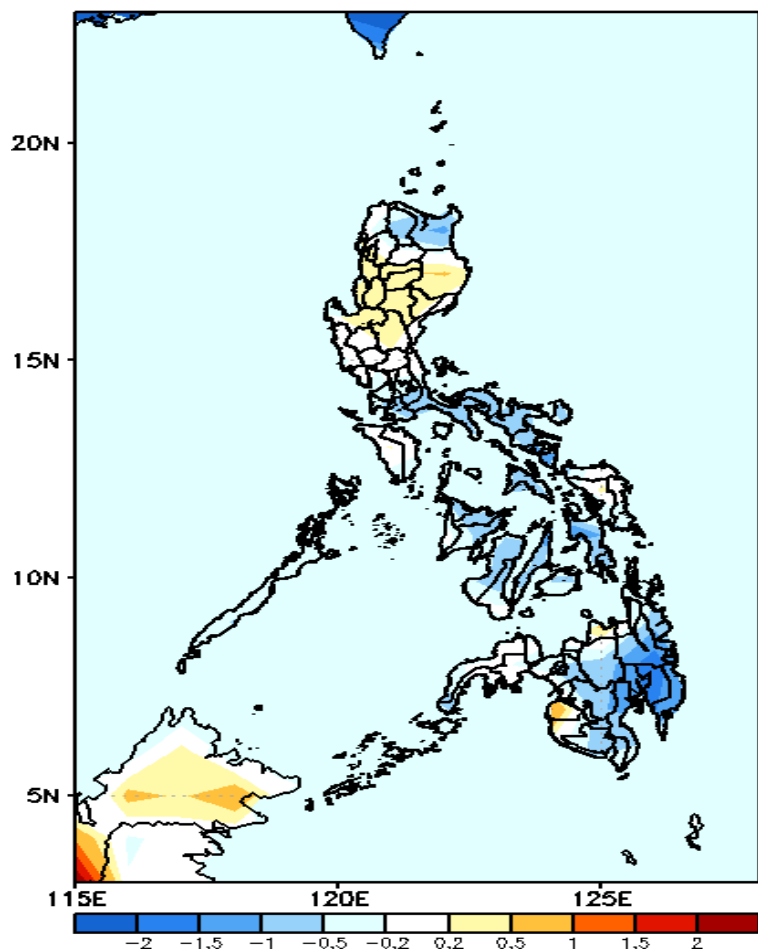
GEFS Week-2 Exceedance Prob. > 200mm
Valid: 20220509 – 20220515



Low probability of rainfall to exceed 200mm in most parts of the country during the forecast period.

GEFS Week-1 & 2 Forecasts: T2m Anomaly

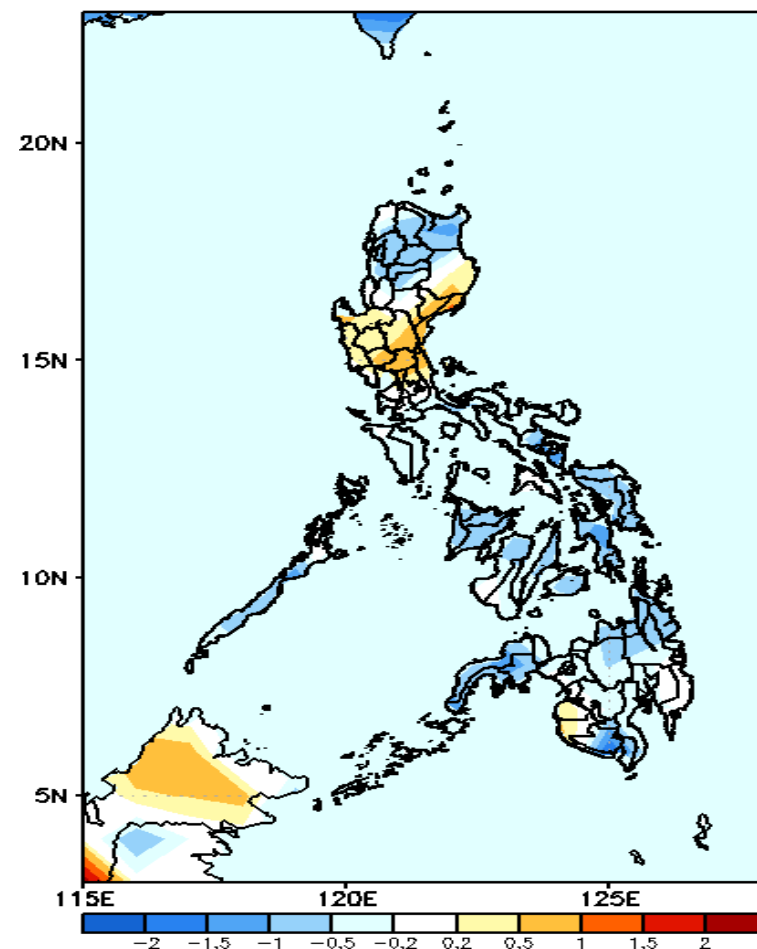
GEFS Week-1 T2m Anomaly
Valid: 20220502 – 20220508



2m Temperature Week 1: May 02-08, 2022

Slightly cooler to cooler than average surface air temperature will likely experience in Apayao, Cagayan, Southern Luzon, Bicol Region and most parts of Visayas and Mindanao while average to slightly warmer for the rest of Luzon and Maguindanao during the forecast period.

GEFS Week-2 T2m Anomaly
Valid: 20220509 – 20220515



2m Temperature Week 2: May 09-15, 2022

Slightly cooler to cooler than average surface air temperature will likely experience in most parts of Northern Luzon and most parts of Visayas and Mindanao while average to slightly warmer temperature for the rest of Luzon during the forecast period.