



USAID
FROM THE AMERICAN PEOPLE



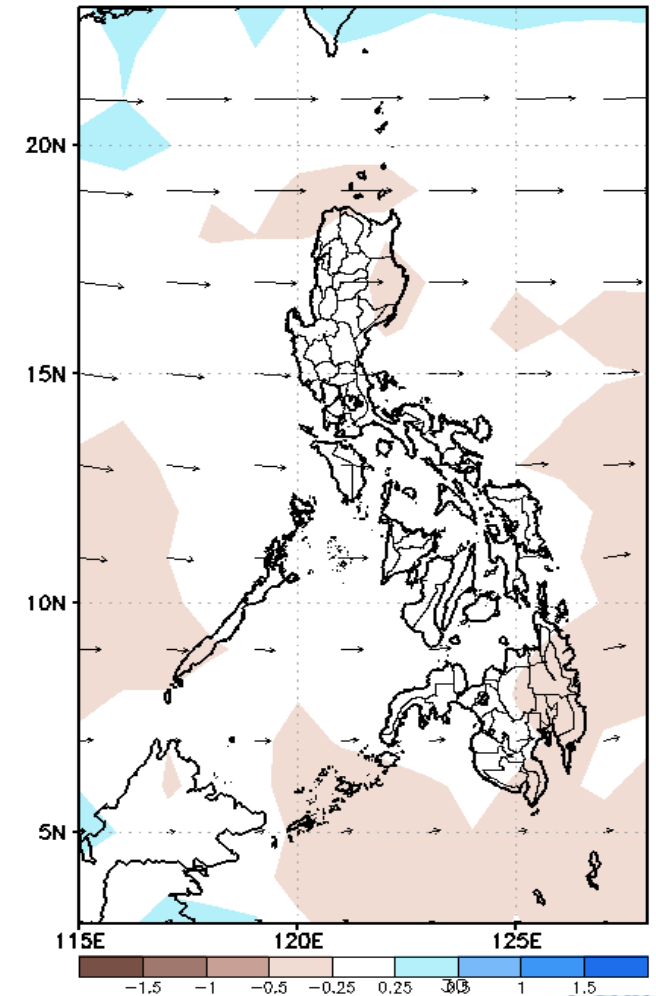
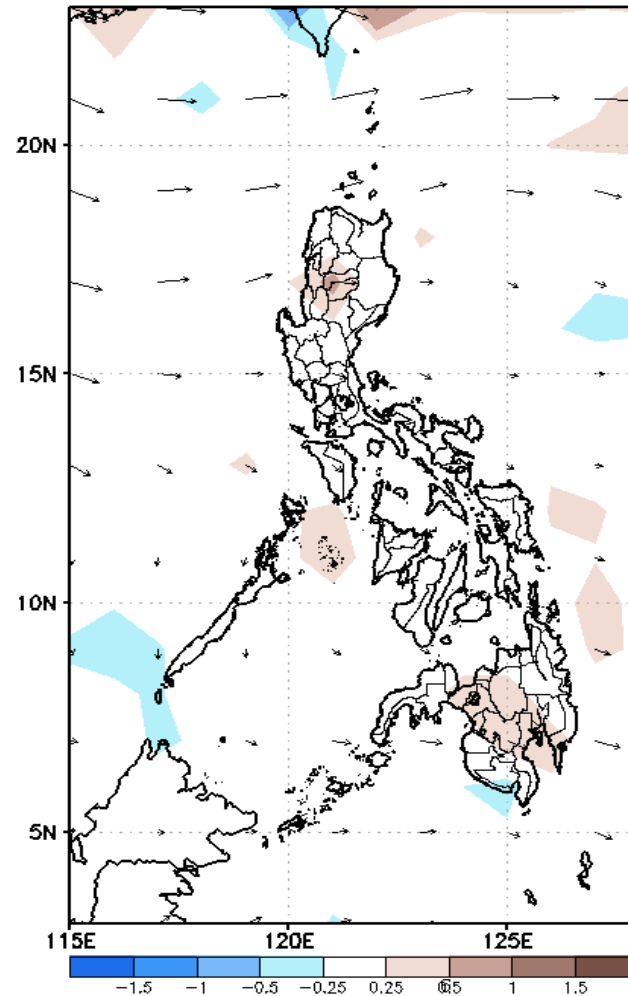
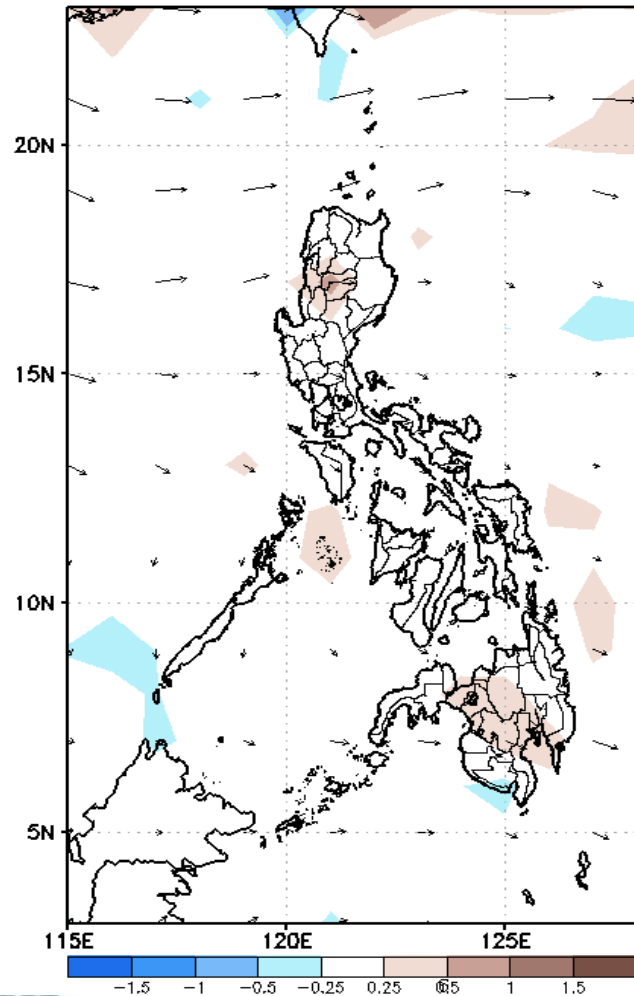
Week 1 & Week 2 Forecast for the Philippines using GEFS Model



GEFS Week-1 Forecasts: Divergence & Wind Anomaly

Week 1: April 02- April 08, 2020

GEFS Week-1 850-hPa Divergence and Wind Anom: GEFS Week-1 700-hPa Divergence and Wind Anom: GEFS Week-1 200-hPa Divergence and Wind Anom:
Valid: 20200402 - 20200408 Valid: 20200402 - 20200408 Valid: 20200402 - 20200408

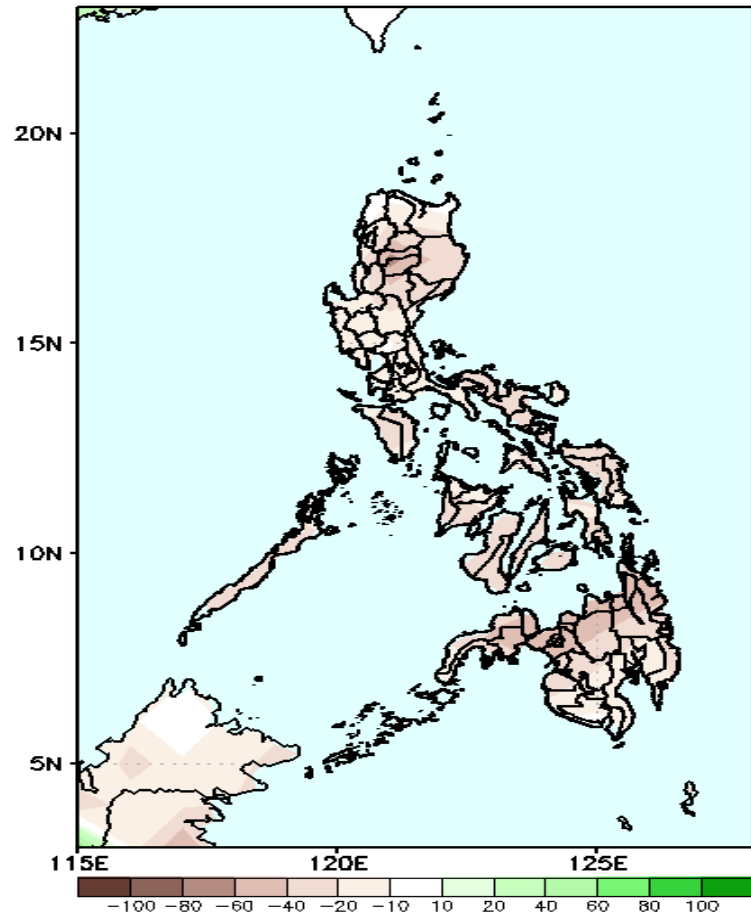


Low level (850 hPa) Divergence show less likelihood of precipitation in most parts of the country. Localized thunderstorm is likely in northern Mindanao. Easterlies affecting most parts of the country during the forecast period.

Precipitation Anomaly and Exceedance Probability > 25/50 mm

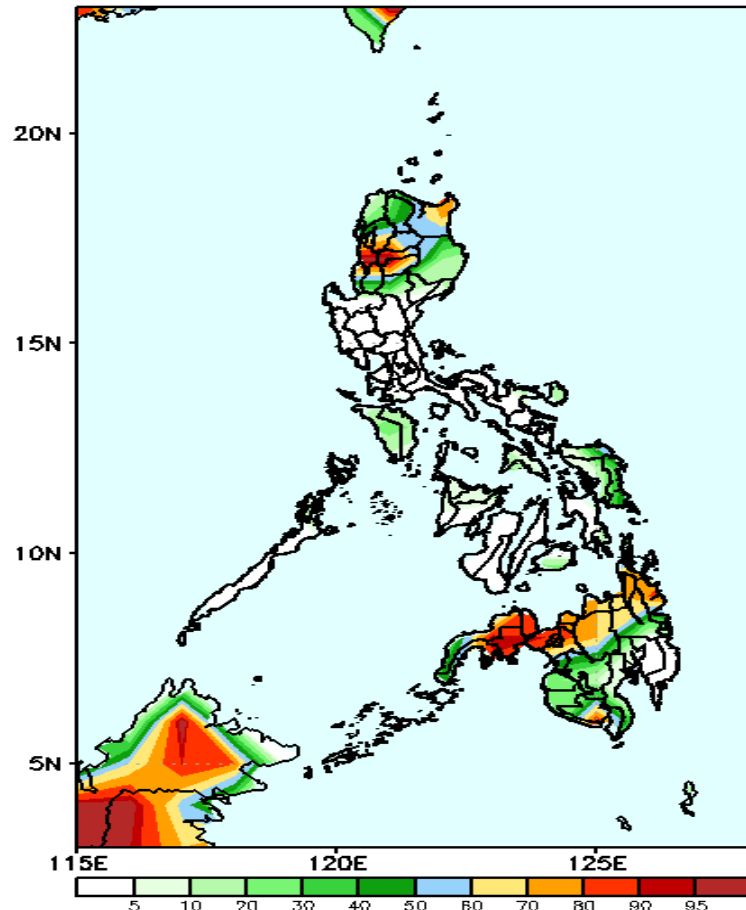
Week 1: April 02- April 08, 2020

GEFS Week-1 Precip Anomaly
Valid: 20200402 - 20200408

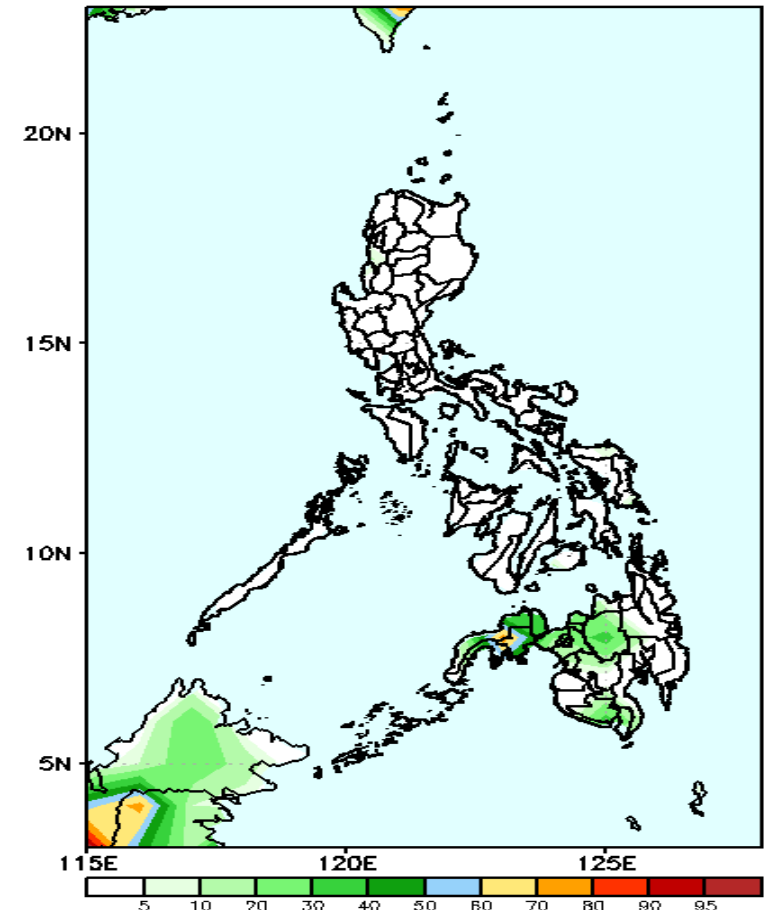


Rainfall deficit of 30-50 mm is most likely in most parts of the country is expected during the forecast period.

GEFS Week-1 Exceedance Prob. > 25mm GEFS Week-1 Exceedance Prob. > 50mm
Valid: 20200402 - 20200408



50-95% probability for rainfall exceeding 25mm in Ilocos Region, CAR, Cagayan Valley, Northern Mindanao and Zamboanga Peninsula, while less probability for the rest of the country during the forecast period.

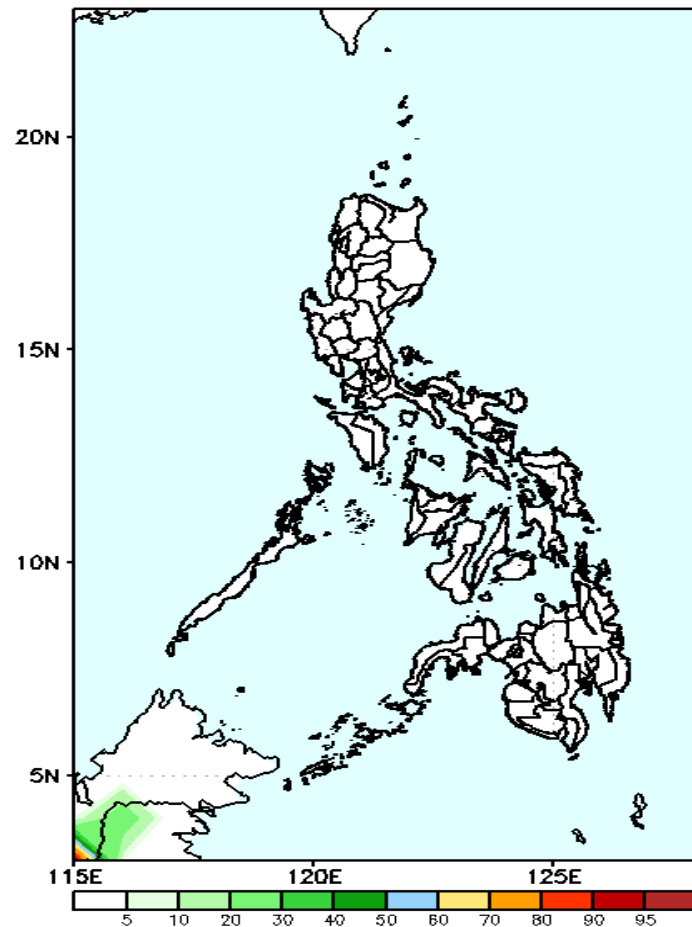


Less probability of rainfall to exceed 50 mm in most parts of the country during the forecast period except in western Mindanao where 40-70% chance is expected.

Exceedance Probability > 100/150/200 mm

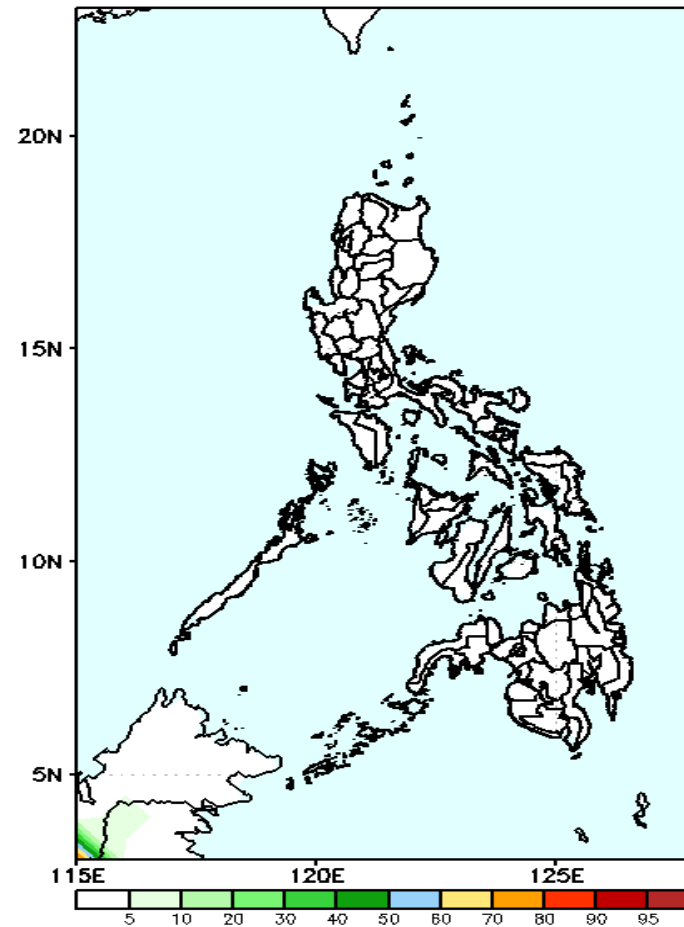
Week 1: April 02- April 08, 2020

GEFS Week-1 Exceedance Prob. > 100mm
Valid: 20200402 - 20200408



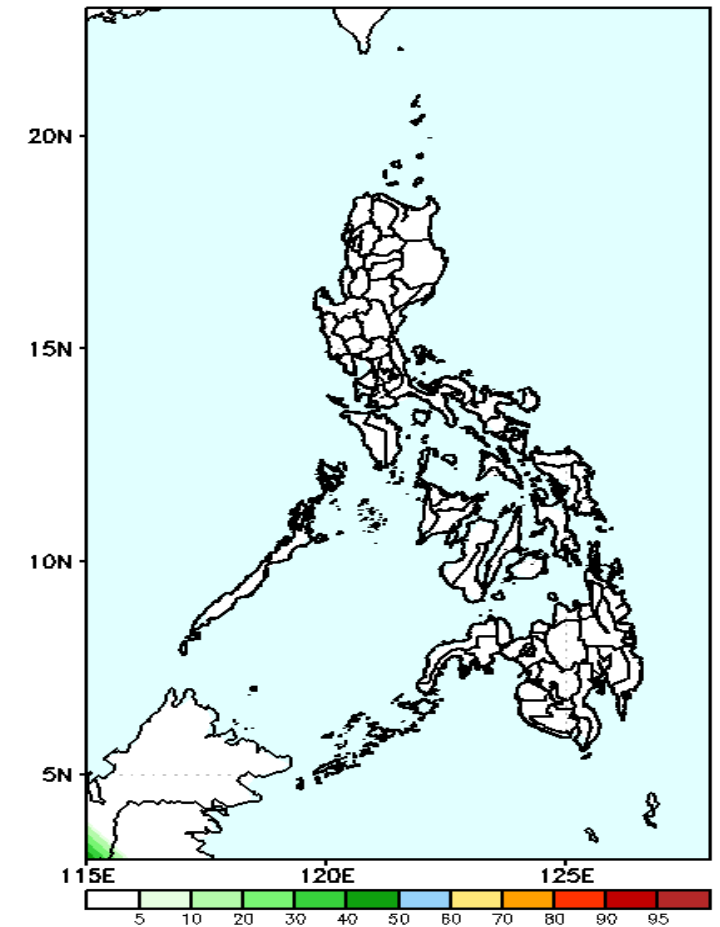
Less probability of rainfall to exceed 100 mm in most parts of the country during the forecast period.

GEFS Week-1 Exceedance Prob. > 150mm
Valid: 20200402 - 20200408



Less probability of rainfall to exceed 150 mm in most parts of the country during the forecast period.

GEFS Week-1 Exceedance Prob. > 200mm
Valid: 20200402 - 20200408



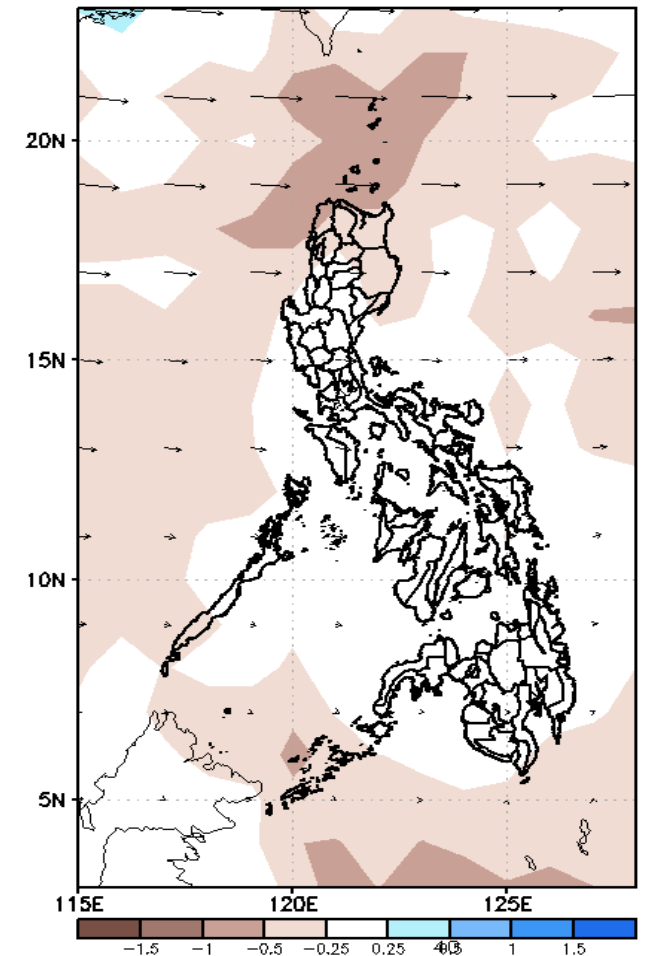
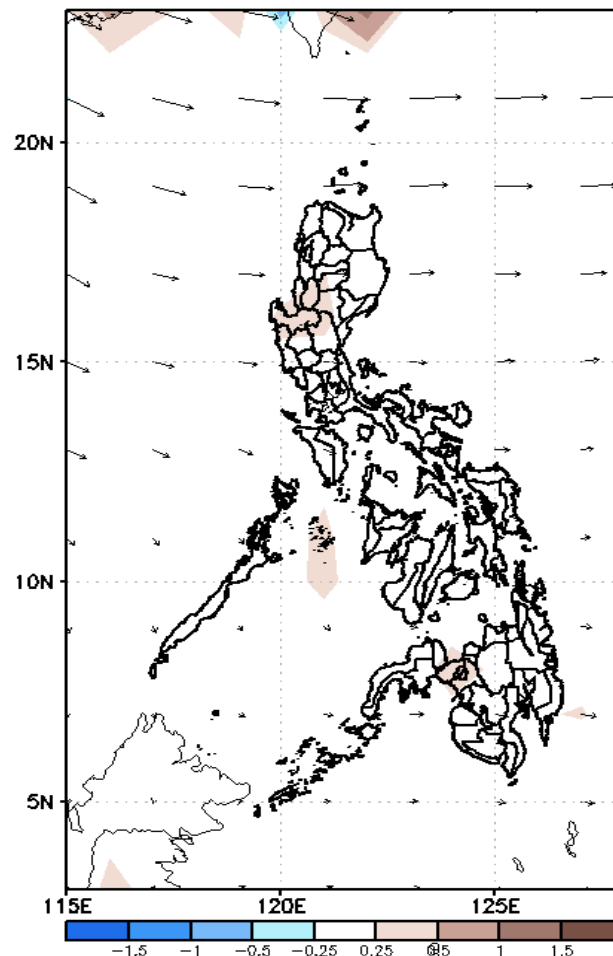
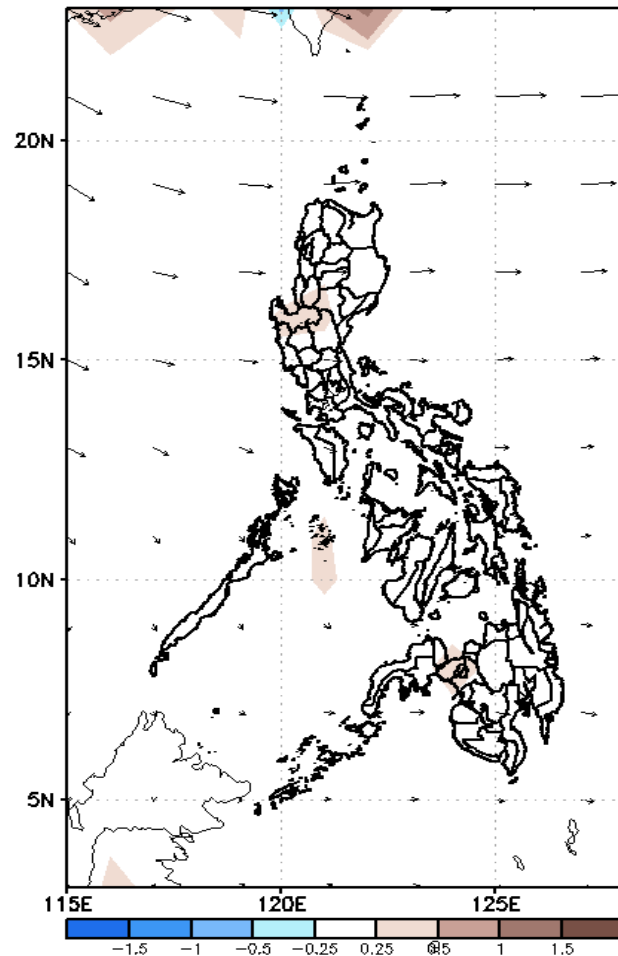
Less probability of rainfall to exceed 200 mm in most parts of the country during the forecast period.



GEFS Week-2 Forecasts: Divergence & Wind Anomaly

Week 2: April 09- April 15, 2020

GEFS Week-2 850-hPa Divergence and Wind Anom: GEFS Week-2 700-hPa Divergence and Wind Anom: GEFS week-2 200-hPa Divergence and Wind Anom
Valid: 20200409 - 20200415 Valid: 20200409 - 20200415 Valid: 20200409 - 20200415

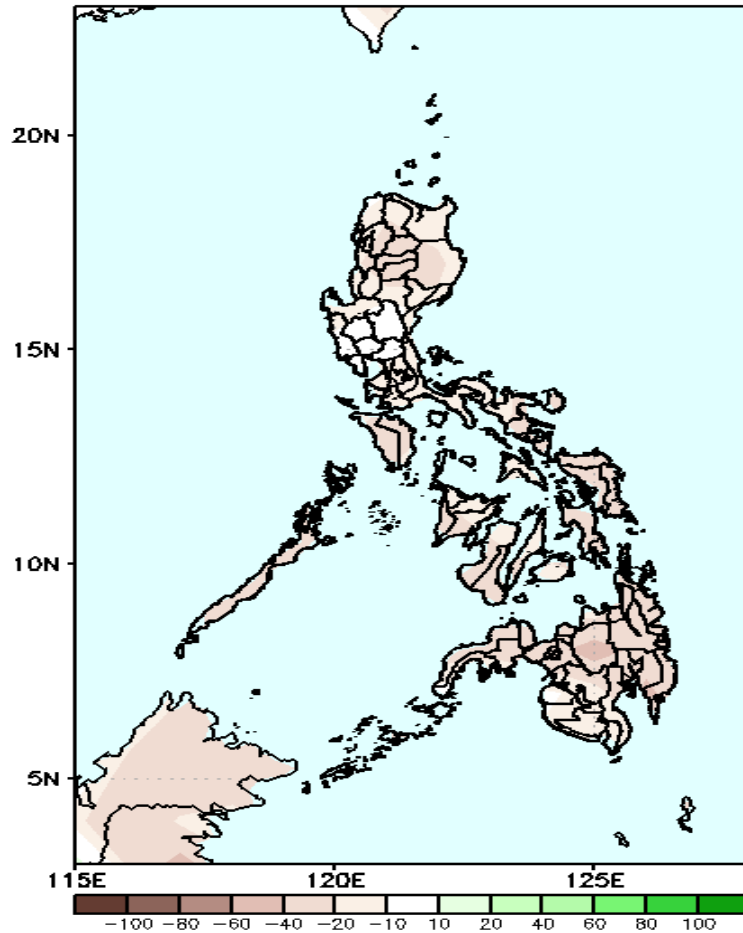


Low level (850 hPa) Divergence show less likelihood of precipitation in most parts of the country. Localized thunderstorm is likely in western Mindanao. Easterlies affecting most parts of the country during the forecast period.

Precipitation Anomaly and Exceedance Probability > 25/50 mm

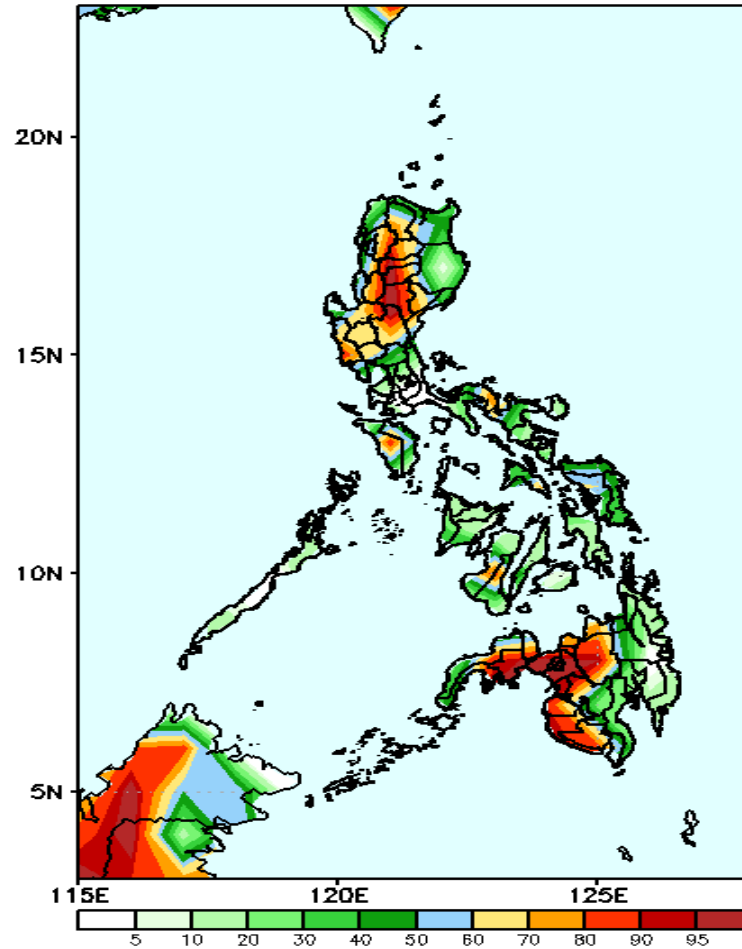
Week 2: April 09- April 15, 2020

GEFS Week-2 Precip Anomaly
Valid: 20200409 - 20200415



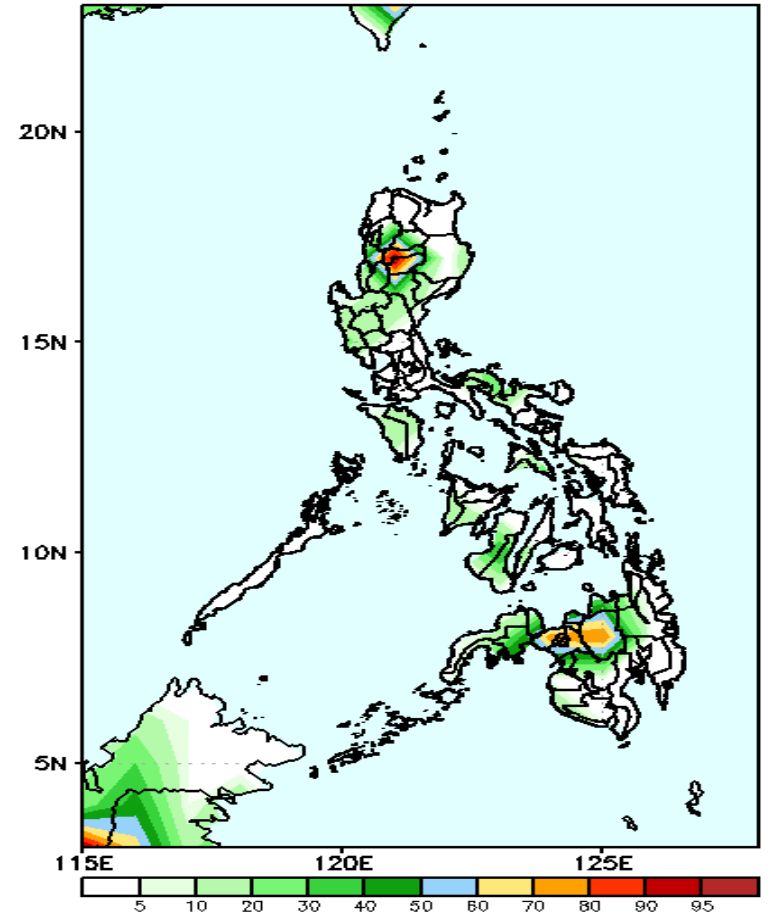
Rainfall deficit of 10-40 mm is most likely in most parts of the country is expected during the forecast period.

GEFS Week-2 Exceedance Prob. > 25mm
Valid: 20200409 - 20200415



60-95% probability for rainfall exceeding 25mm in most parts of western Luzon and western Mindanao while the rest of the country, 30-60% chance during the forecast period.

GEFS Week-2 Exceedance Prob. > 50mm
Valid: 20200409 - 20200415

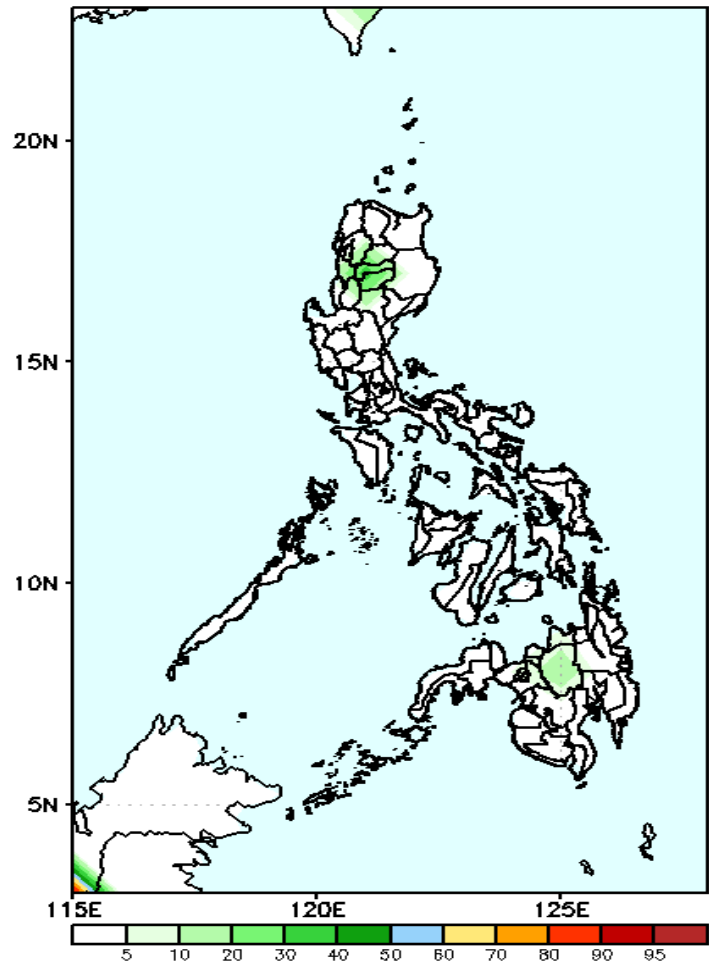


Less probability of rainfall to exceed 50 mm in most parts of the country except in some areas in CAR and northern Mindanao where 60-90% chance is expected during the forecast period.

Exceedance Probability > 100/150/200 mm

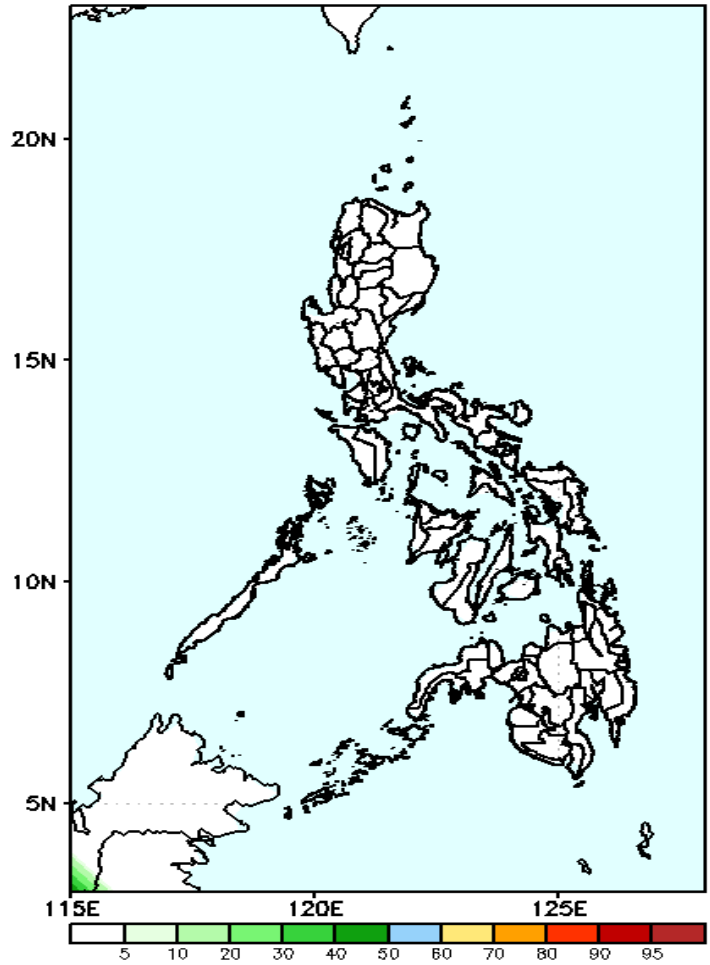
Week 2: April 09- April 15, 2020

GEFS Week-2 Exceedance Prob. > 100mm
Valid: 20200409 – 20200415



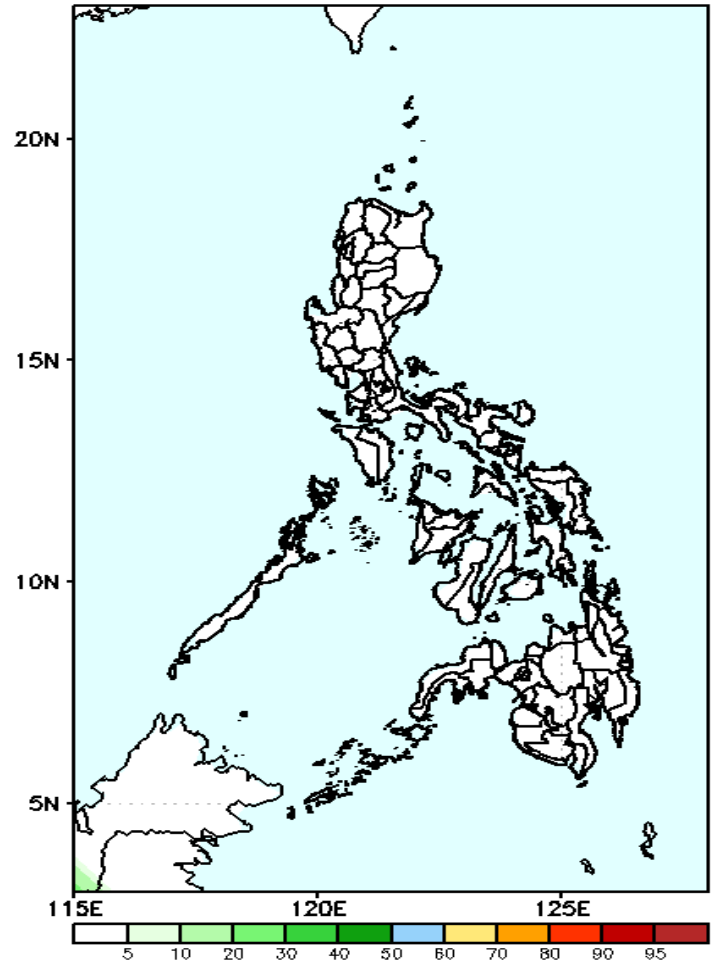
Less probability of rainfall to exceed 100 mm in most parts of the country during the forecast period.

GEFS Week-2 Exceedance Prob. > 150mm
Valid: 20200409 – 20200415



Less probability of rainfall to exceed 150 mm in most parts of the country during the forecast period.

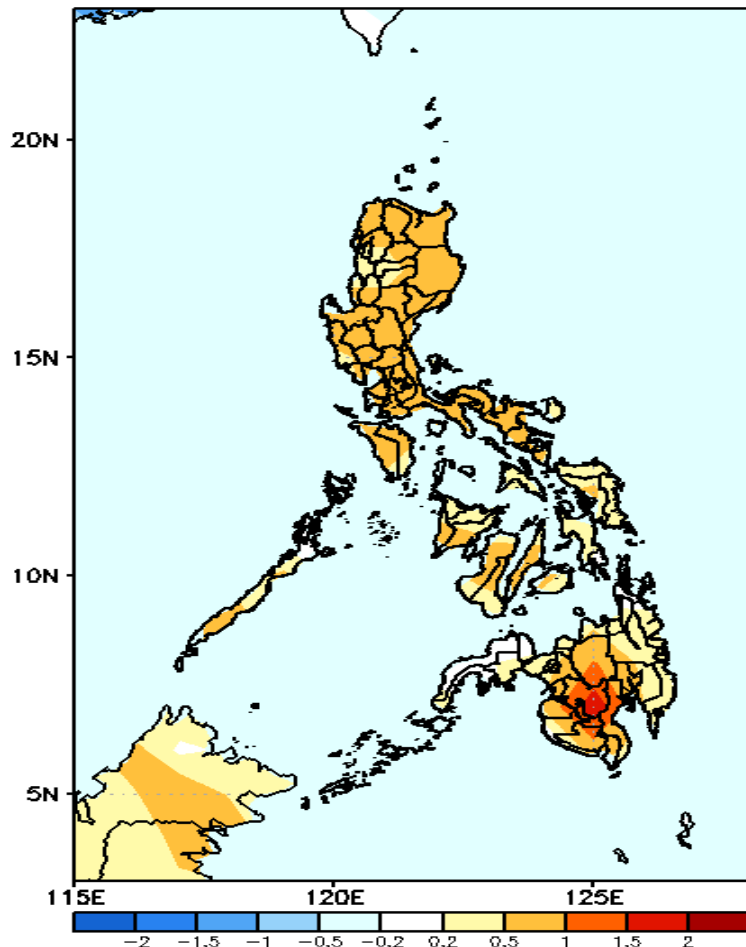
GEFS Week-2 Exceedance Prob. > 200mm
Valid: 20200409 – 20200415



Less probability of rainfall to exceed 200 mm in most parts of the country during the forecast period.

GEFS Week-1 & 2 Forecasts: T2m Anomaly

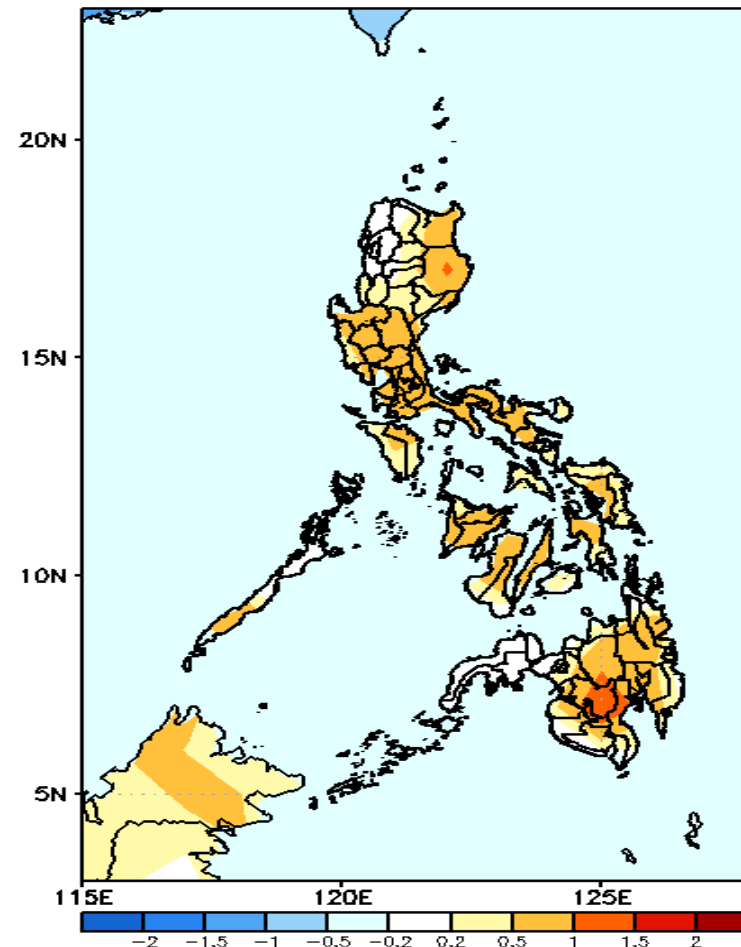
GEFS Week-1 T2m Anomaly
Valid: 20200402 - 20200408



2m Temperature Week 1: April 02- April 08, 2020

Slightly warmer to warmer than average surface air temperature will likely experience in most parts of the country during the forecast period.

GEFS Week-2 T2m Anomaly
Valid: 20200409 - 20200415



2m Temperature Week 1: April 09- April 15, 2020

Slightly warmer to warmer than average surface air temperature will likely experience in most parts of the country except in some parts of northwestern Luzon and western Mindanao where average temperature is expected during the forecast period .