



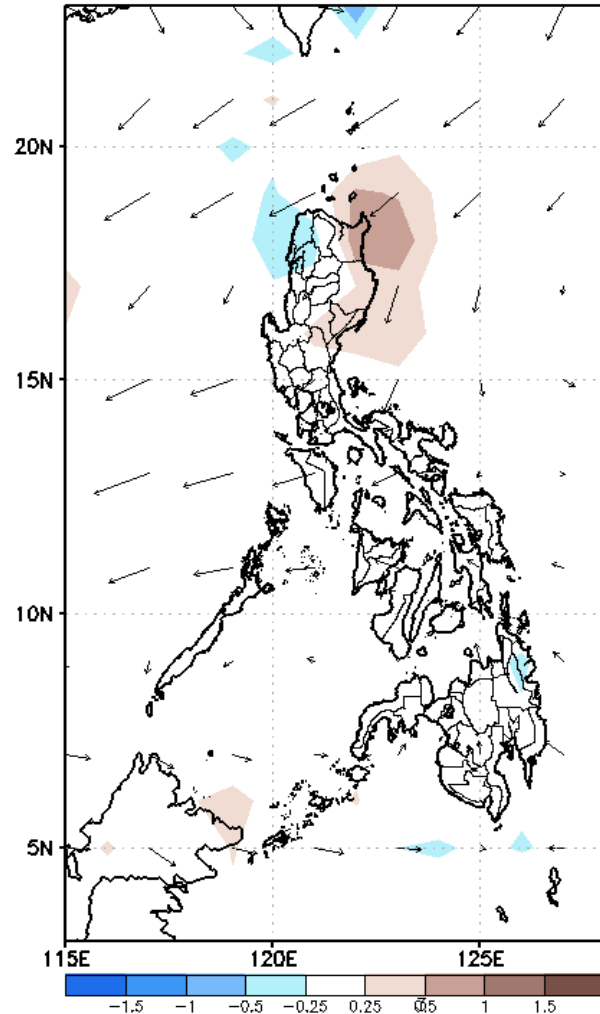
Week 1 & Week 2 Forecast for the Philippines using GEFS Model



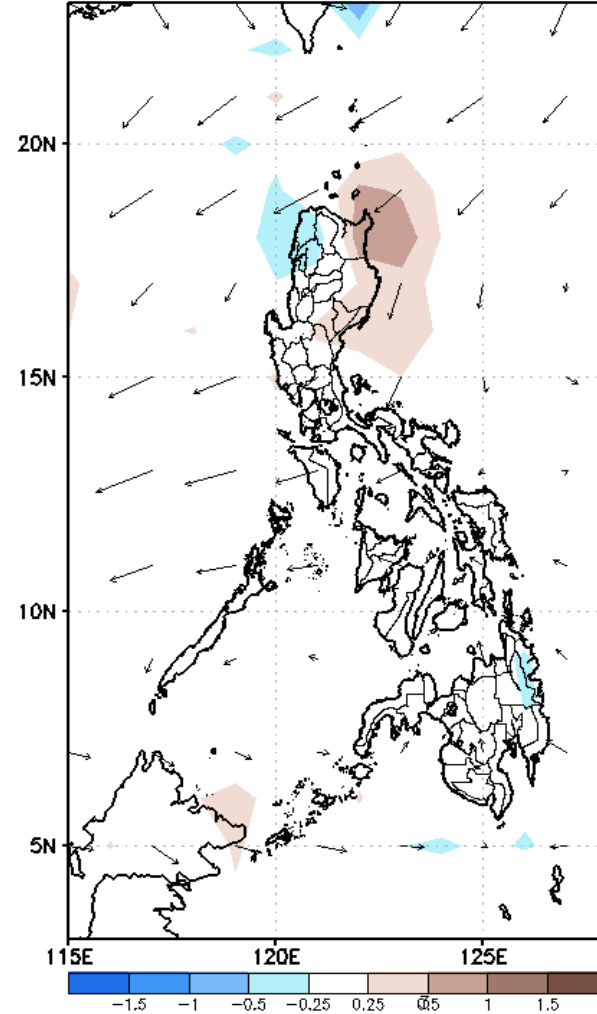
GEFS Week-1 Forecasts: Divergence & Wind Anomaly

Week 1: October 02-08, 2020

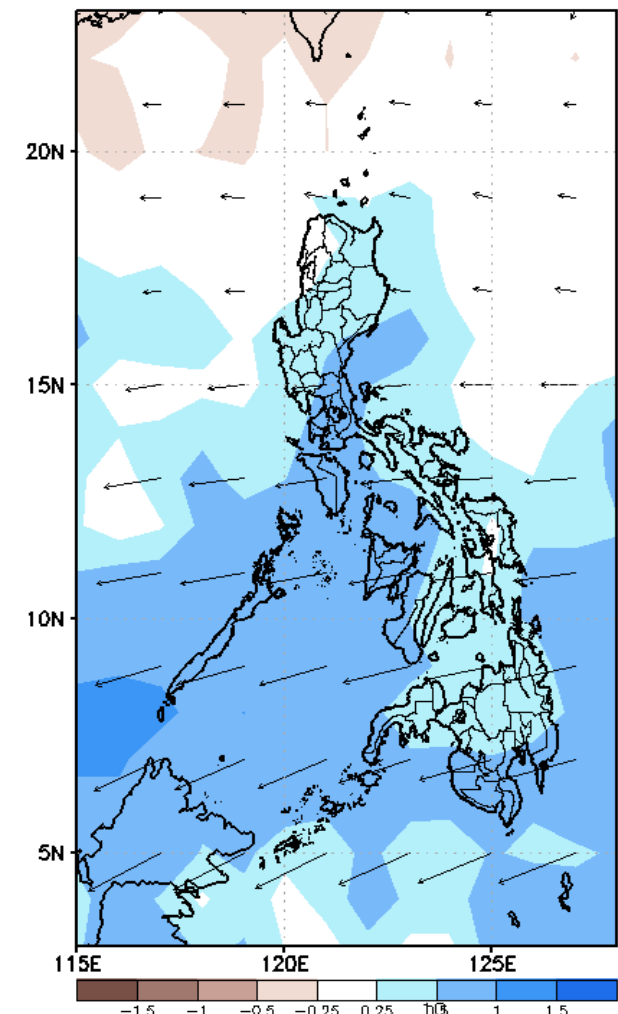
GEFS Week-1 850-hPa Divergence and Wind Anom
Valid: 20201002 - 20201008



GEFS Week-1 700-hPa Divergence and Wind Anom
Valid: 20201002 - 20201008



GEFS Week-1 200-hPa Divergence and Wind Anom
Valid: 20201002 - 20201008



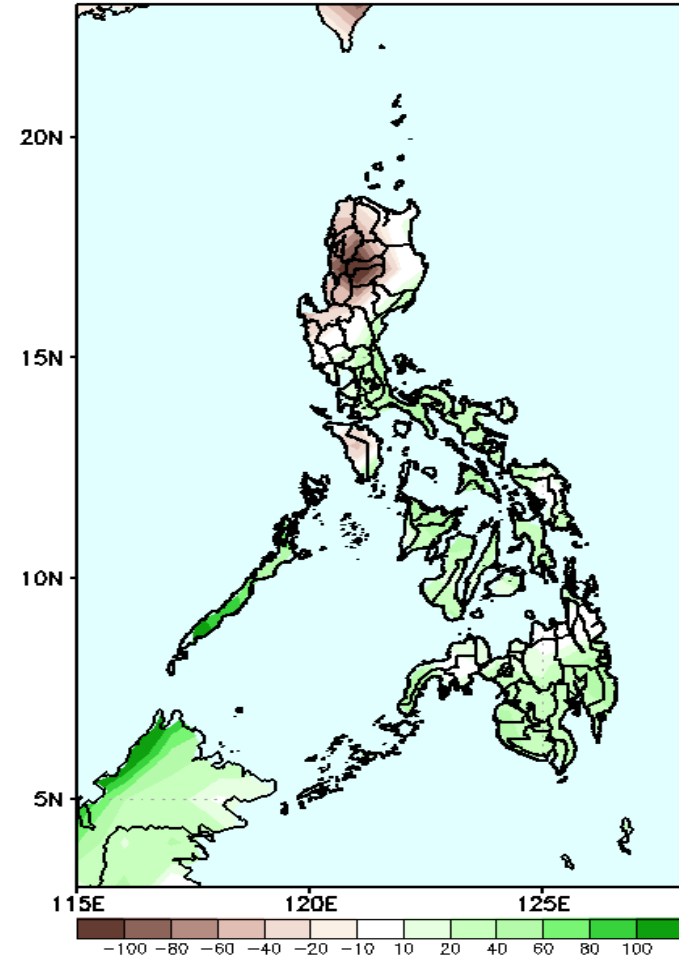
Upper level (200hPa) Divergence suggest likelihood of precipitation in most parts of the country during the forecast period. Southwest monsoon affecting western Mindanao while easterlies affecting most parts of the country during the forecast period.



Precipitation Anomaly and Exceedance Probability > 25/50 mm

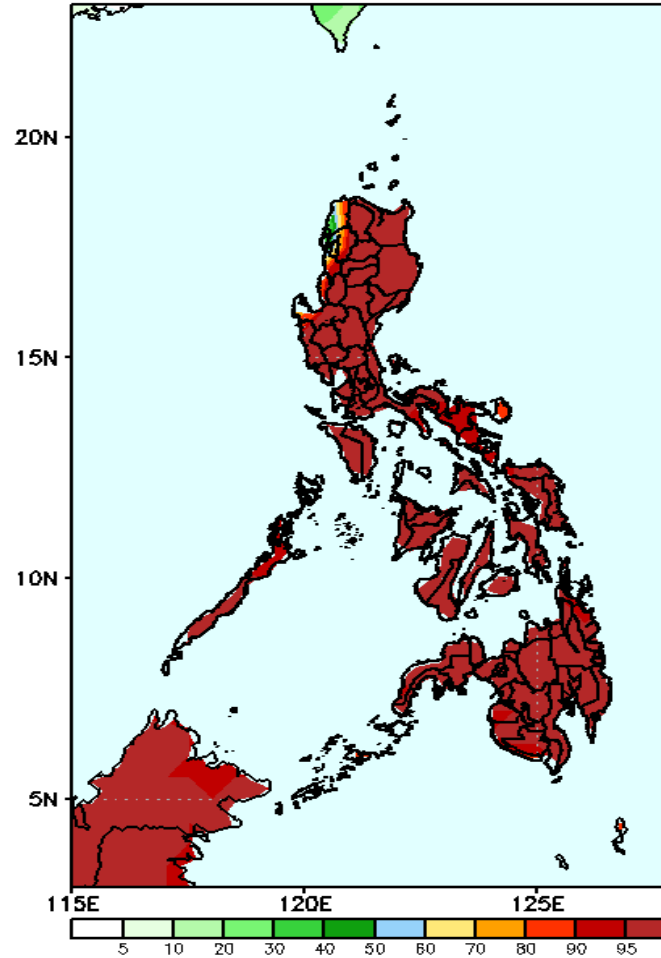
Week 1: October 02-08, 2020

GEFS Week-1 Precip Anomaly
Valid: 20201002 – 20201008



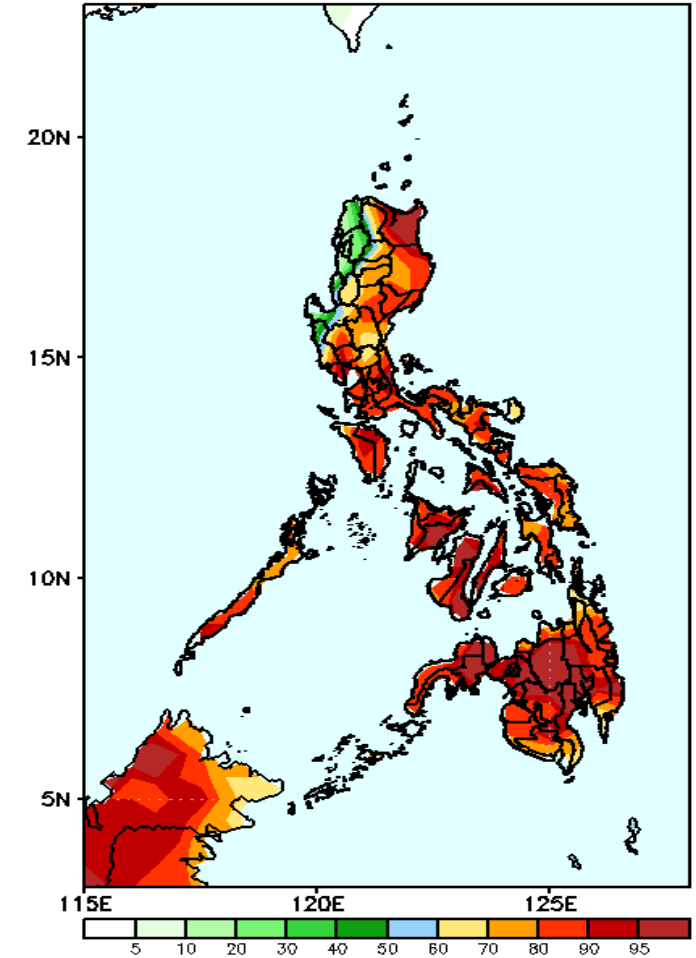
Rainfall deficit of up to 100mm in Cordillera Region is expected while increase of up to 60mm in Visayas and Mindanao during the forecast period.

GEFS Week-1 Exceedance Prob. > 25mm
Valid: 20201002 – 20201008



High probability of rainfall to exceed 25mm in most parts the country is expected during the forecast period.

GEFS Week-1 Exceedance Prob. > 50mm
Valid: 20201002 – 20201008

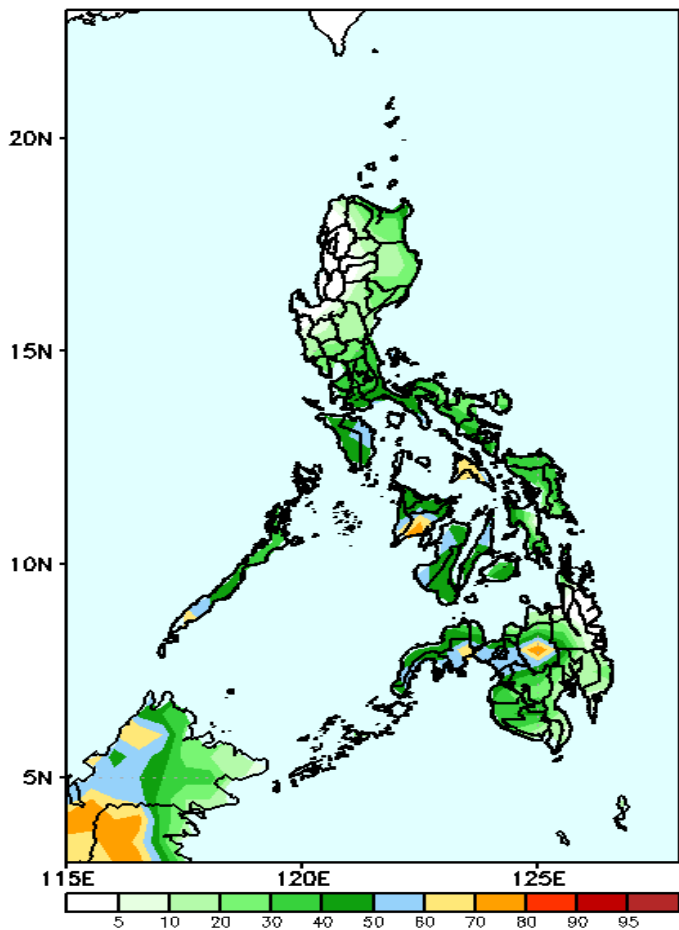


High probability of rainfall to exceed 50mm in most parts the country is expected except in Ilocos Region where there is low probability during the forecast period.

Exceedance Probability > 100/150/200 mm

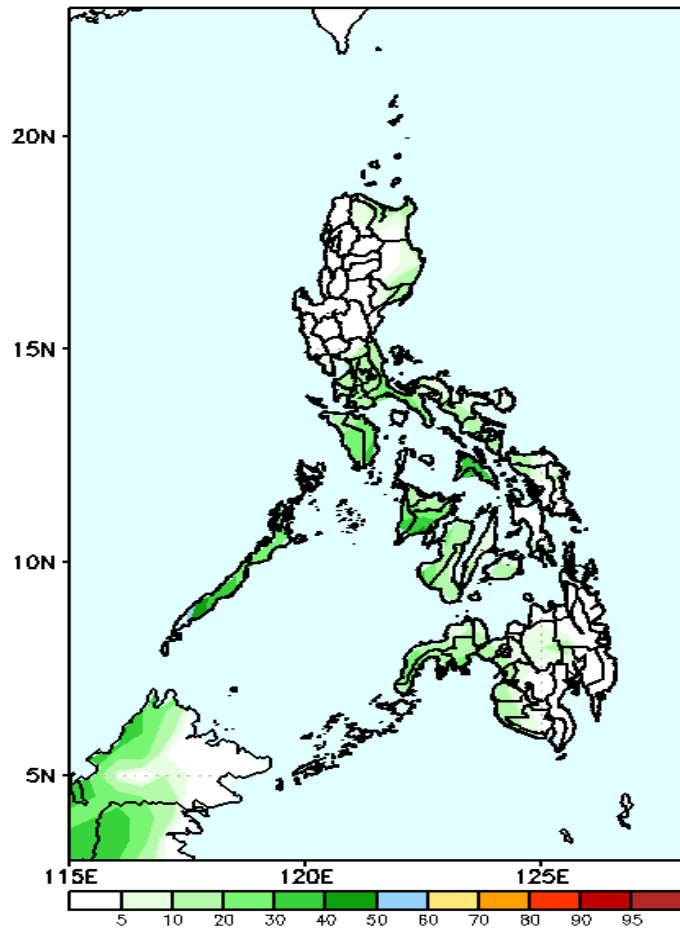
Week 1: October 02-08, 2020

GEFS Week-1 Exceedance Prob. > 100mm
Valid: 20201002 – 20201008



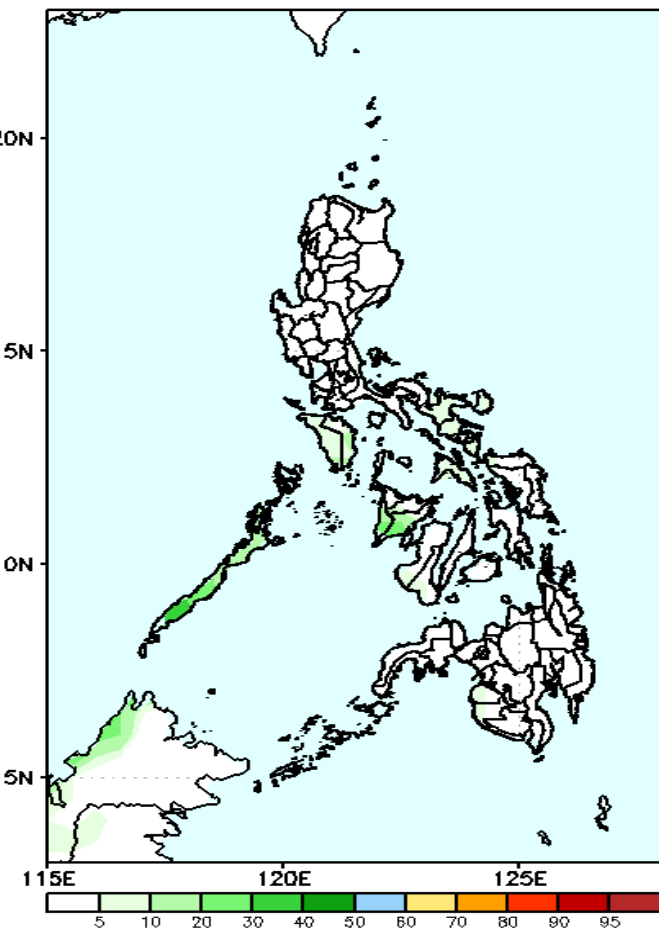
40-50% probability of rainfall to exceed 100mm in most parts of the country is expected except in Bukidnon, Masbate and Iloilo where there is 70-80% probability during the forecast period.

GEFS Week-1 Exceedance Prob. > 150mm
Valid: 20201002 – 20201008



Less probability of rainfall to exceed 150mm in most parts of the country during the forecast period.

EFS Week-1 Exceedance Prob. > 200mm
Valid: 20201002 – 20201008



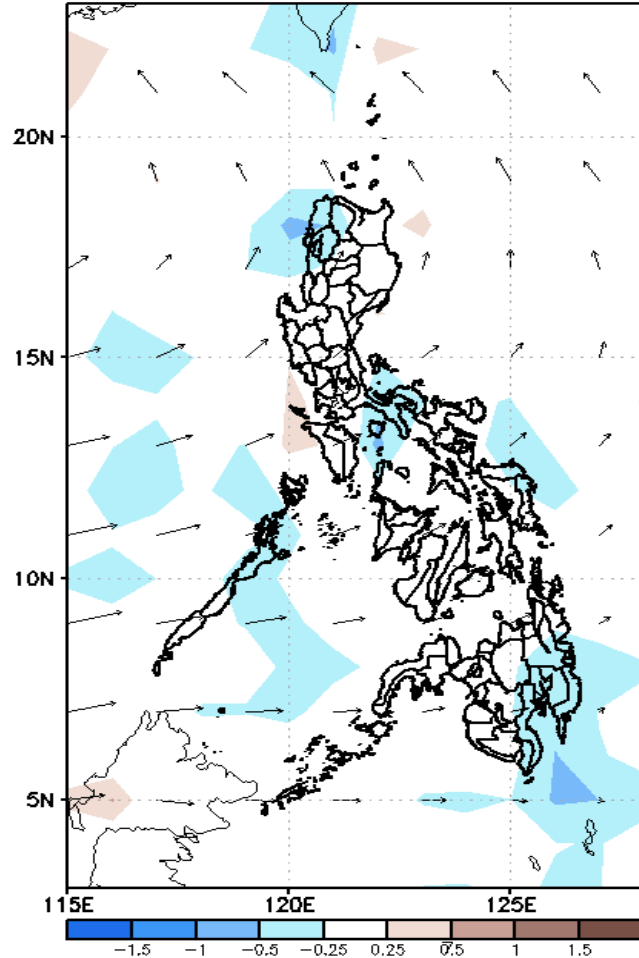
Less probability of rainfall to exceed 200mm in most parts of the country during the forecast period.



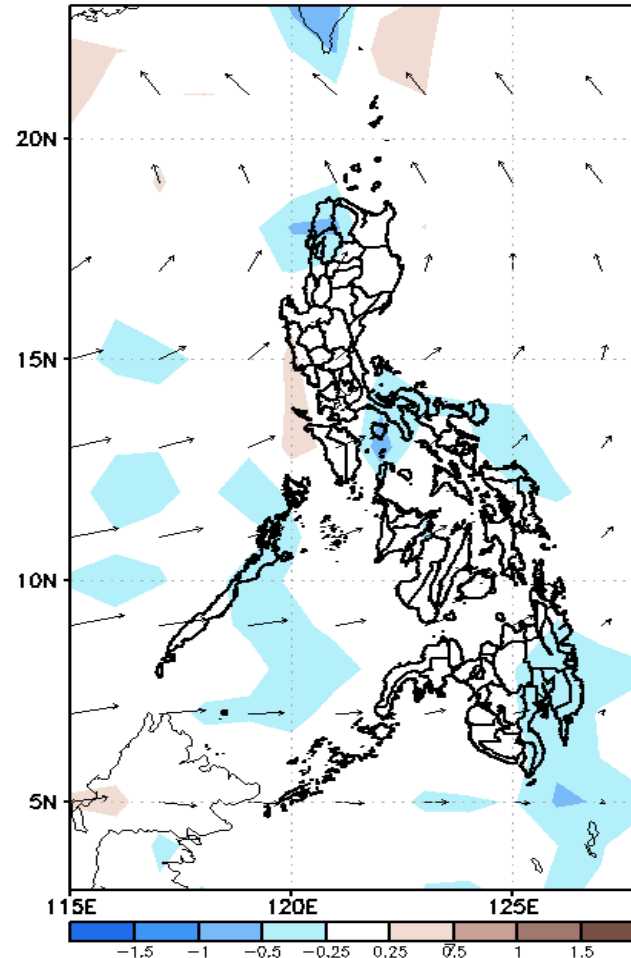
GEFS Week-2 Forecasts: Divergence & Wind Anomaly

Week 2: Oct 09-15, 2020

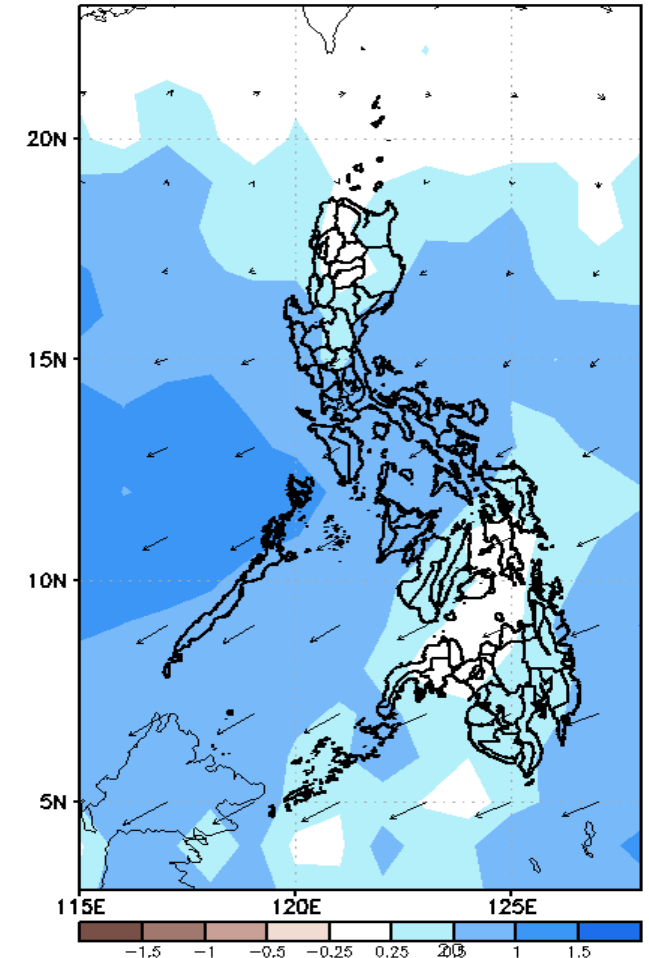
GEFS Week-2 850-hPa Divergence and Wind Anom
Valid: 20201009 - 20201015



GEFS Week-2 700-hPa Divergence and Wind Anom
Valid: 20201009 - 20201015



GEFS week-2 200-hPa Divergence and Wind Anom
Valid: 20201009 - 20201015

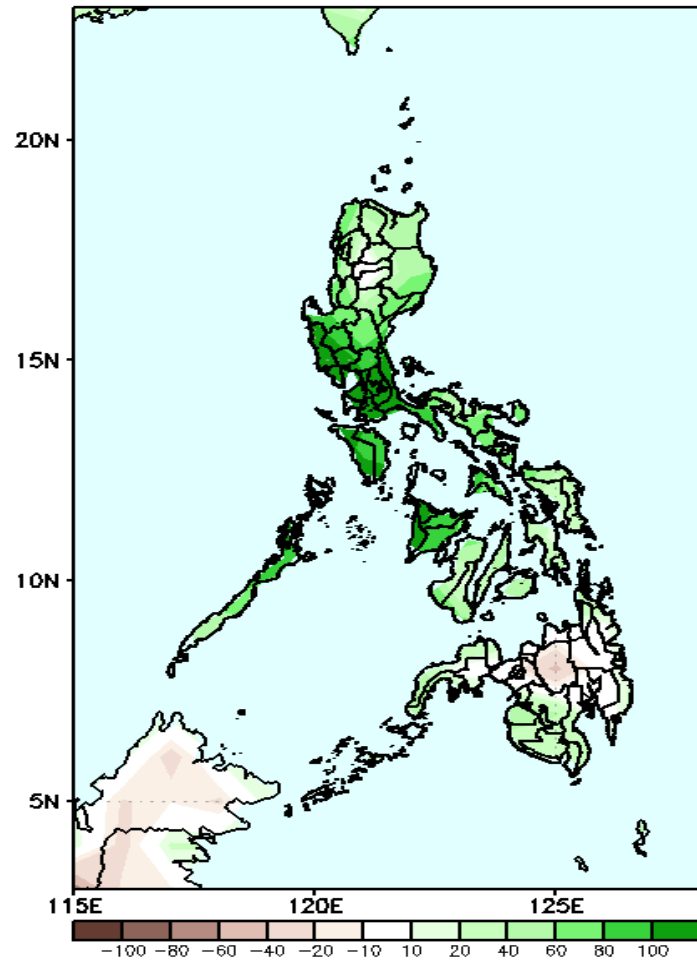


Upper level (200hPa) Divergence suggest likelihood of precipitation in most parts of the country. Southwest Monsoon affecting western Luzon, western Visayas and western Mindanao while easterlies affecting remaining parts of the country during the forecast period.

Precipitation Anomaly and Exceedance Probability > 25/50 mm

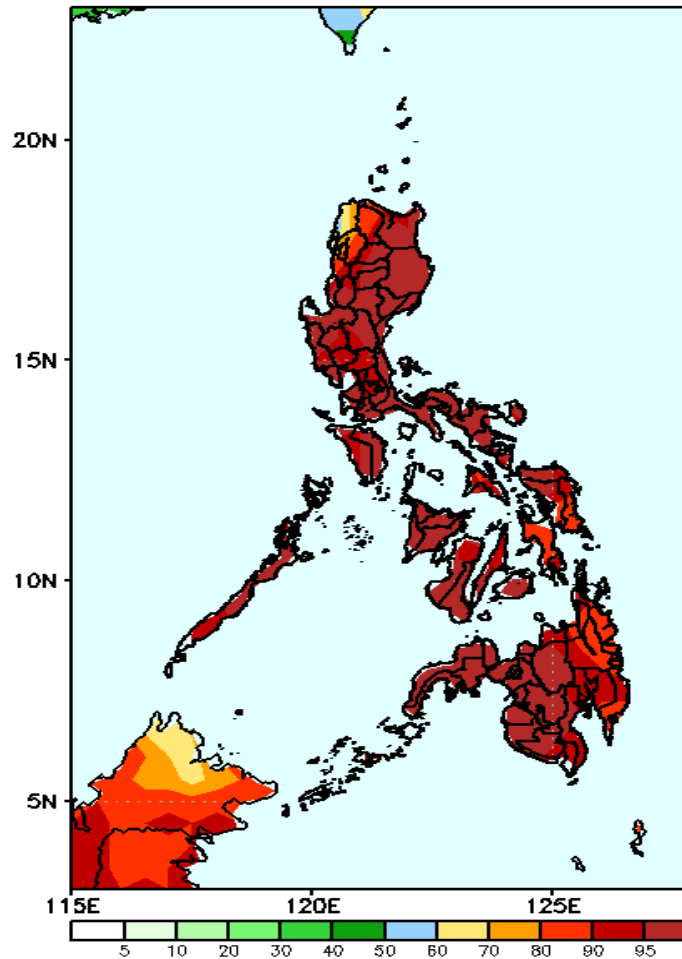
Week 2: Oct 09-15, 2020

GEFS Week-2 Precip Anomaly
Valid: 20201009 – 20201015



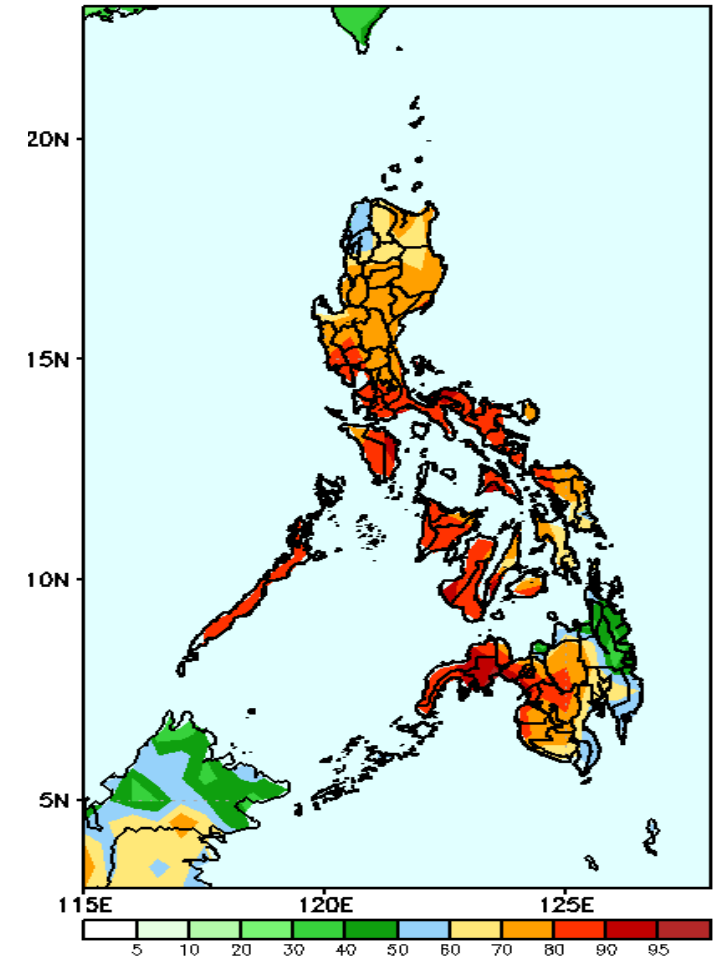
Increase of rainfall of 40-80mm in Bukidnon, Lanao provinces and North Cotabato is expected during the forecast period.

GEFS Week-2 Exceedance Prob. > 25mm
Valid: 20201009 – 20201015



High probability of rainfall to exceed 25mm in most parts the country is expected during the forecast period.

GEFS Week-2 Exceedance Prob. > 50mm
Valid: 20201009 – 20201015

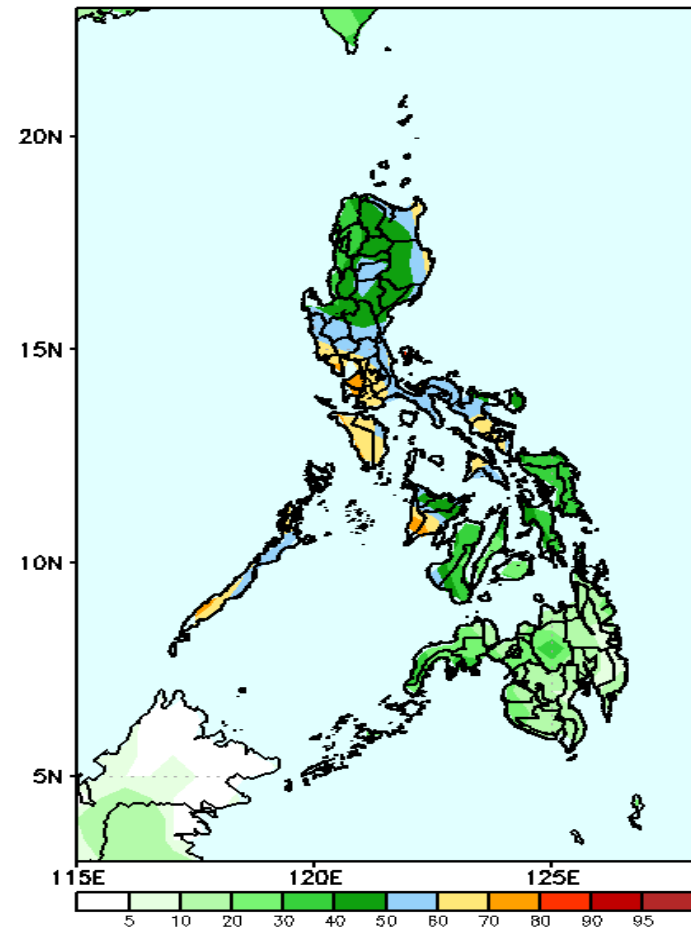


High probability of rainfall to exceed 50mm in most parts the country is expected except in the eastern parts of Mindanao where there is low probability during the forecast period.

Exceedance Probability > 100/150/200 mm

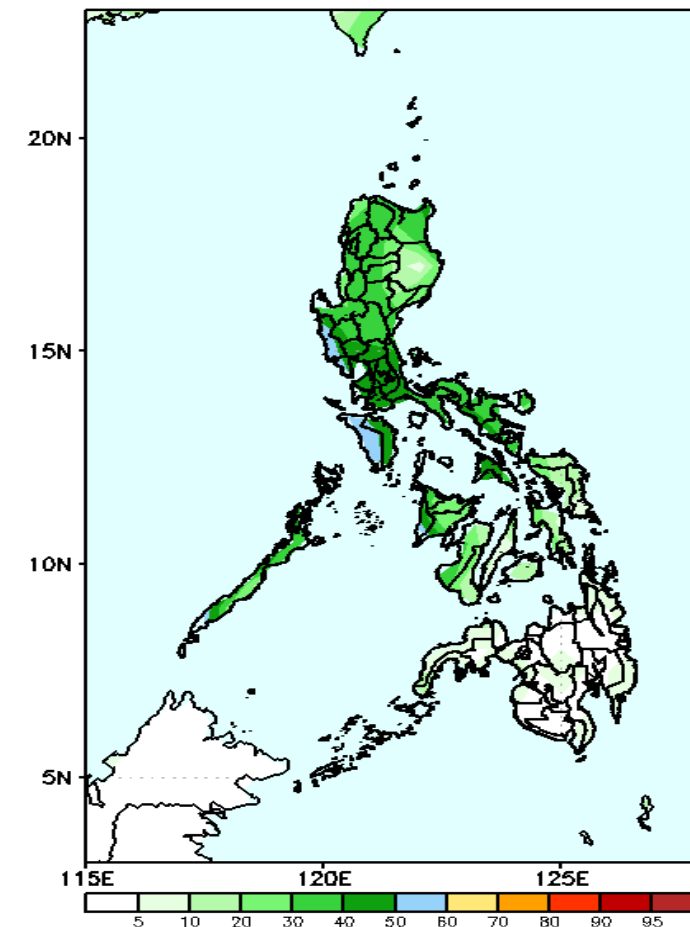
Week 2: Oct 09-15, 2020

GEFS Week-2 Exceedance Prob. > 100mm
Valid: 20201009 – 20201015



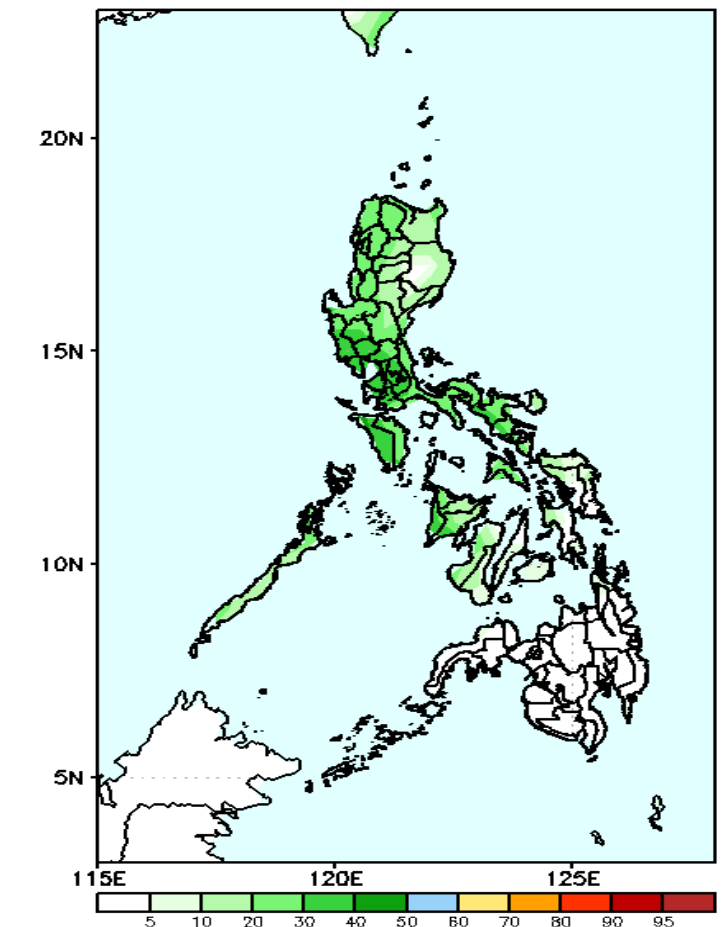
40-50% probability of rainfall to exceed 100mm in most parts of the country is expected except in Southern Luzon, Mindoro, Iloilo and Antique where there is 60-80% probability during the forecast period.

GEFS Week-2 Exceedance Prob. > 150mm
Valid: 20201009 – 20201015



40-50% probability of rainfall to exceed 150mm in most parts of Luzon and Visayas is expected while less likely in Mindanao during the forecast period.

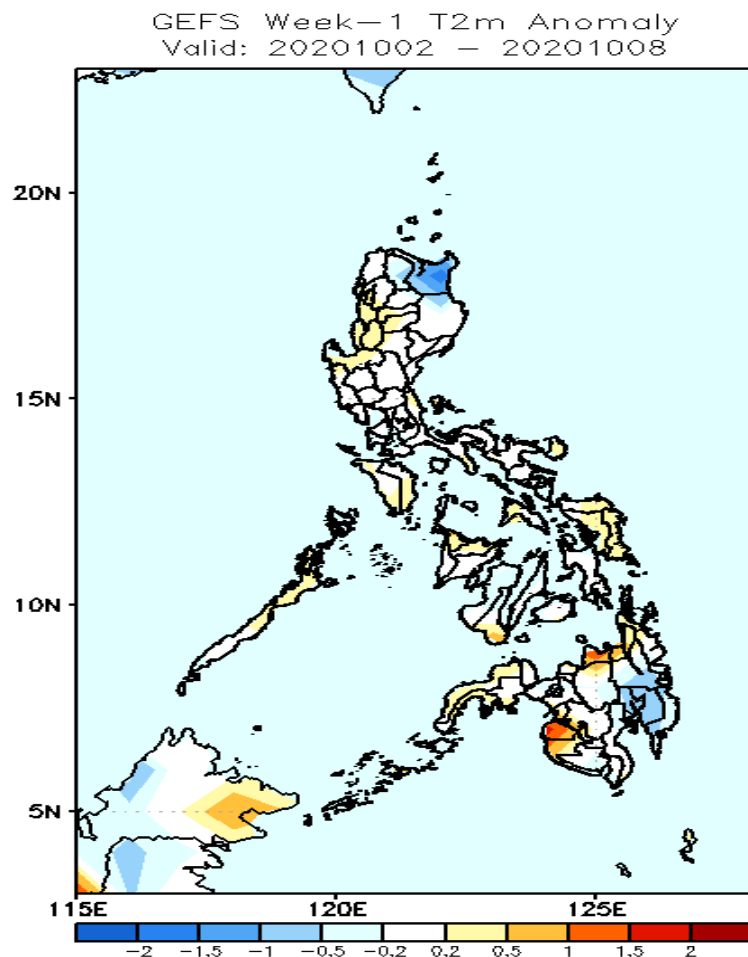
GEFS Week-2 Exceedance Prob. > 200mm
Valid: 20201009 – 20201015



40-50% probability of rainfall to exceed 200mm in most parts of Luzon and Visayas is expected while less likely in Mindanao during the forecast period.

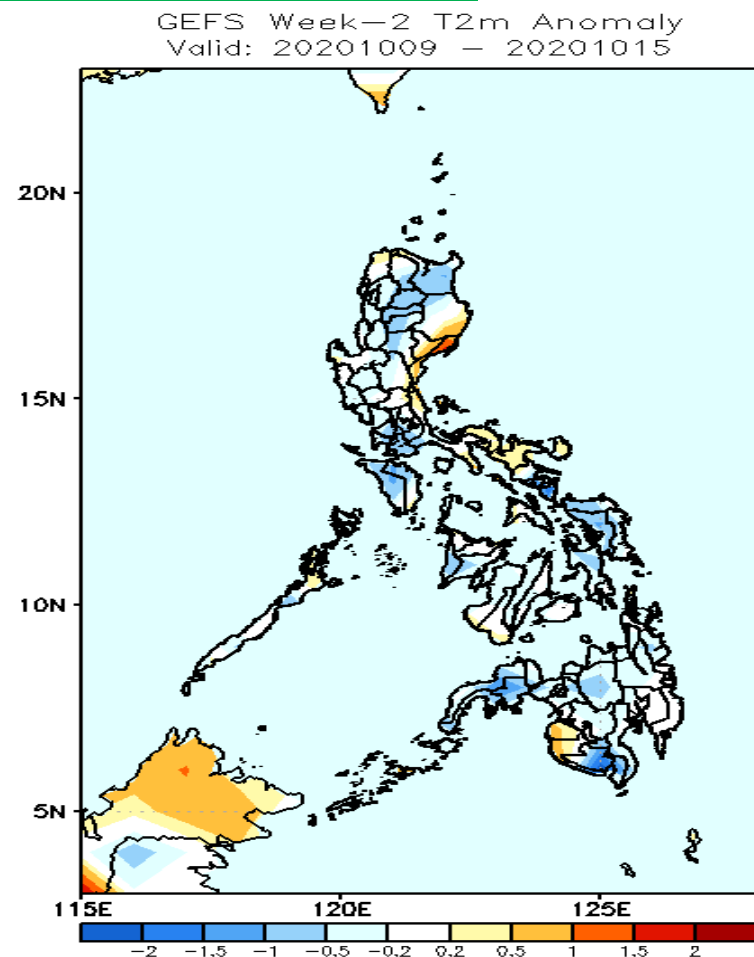


GEFS Week-1 & 2 Forecasts: T2m Anomaly



2m Temperature Week 1: October 02-08, 2020

Cooler than average surface air temperature will likely experience in Cagayan and Davao Region while average to slightly warmer surface air temperature for the rest of the country during the forecast period.



2m Temperature Week 2: Oct 09-15, 2020

Average to cooler than average surface air temperature will likely experience in most parts of the country is expected except in the eastern parts of Cagayan Valley and Sultan Kudarat where slightly warmer surface air temperature is more likely during the forecast period.