



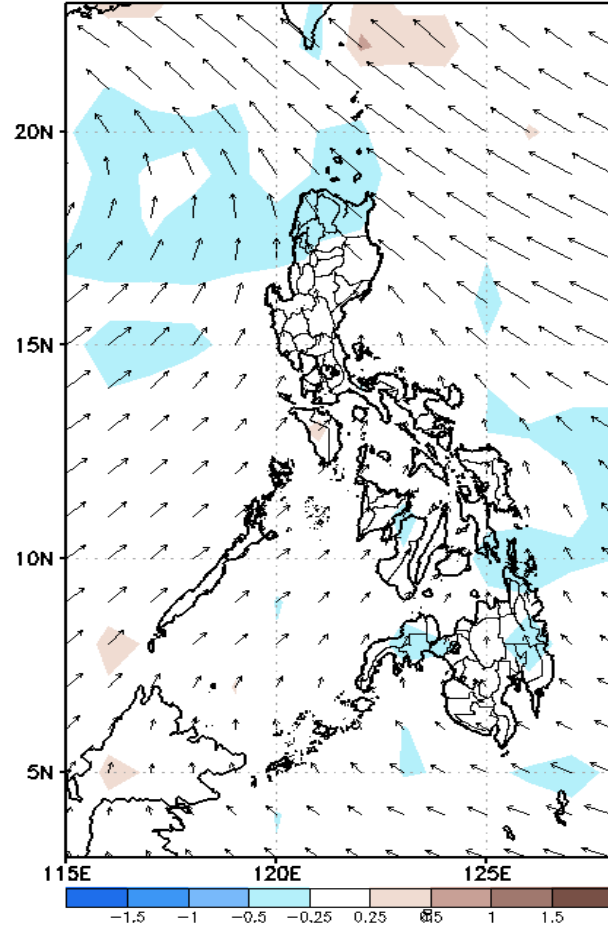
Week 1 & Week 2 Forecast for the Philippines using GEFS Model



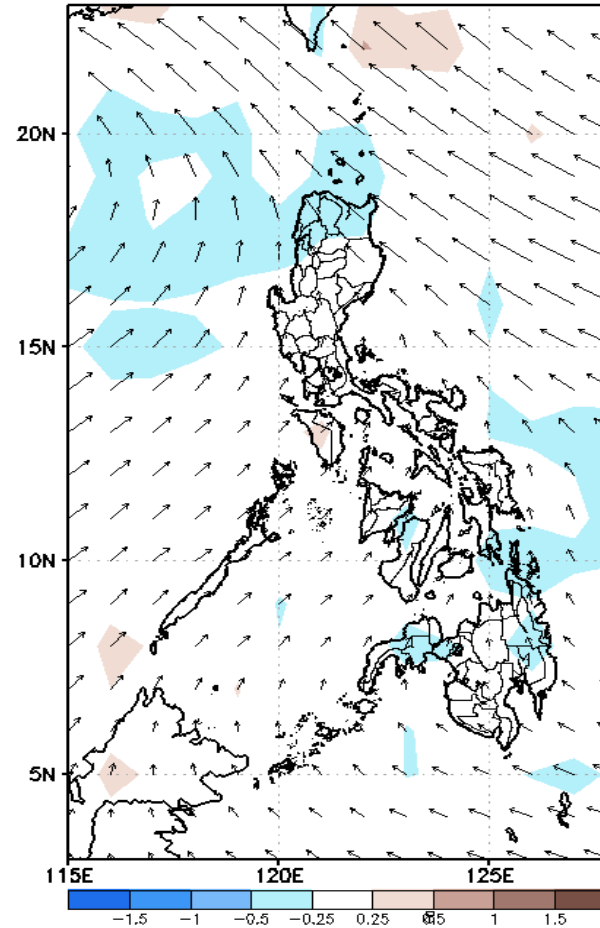
GEFS Week-1 Forecasts: Wind Anomaly Forecast

Week 1: Aug 03-09, 2022

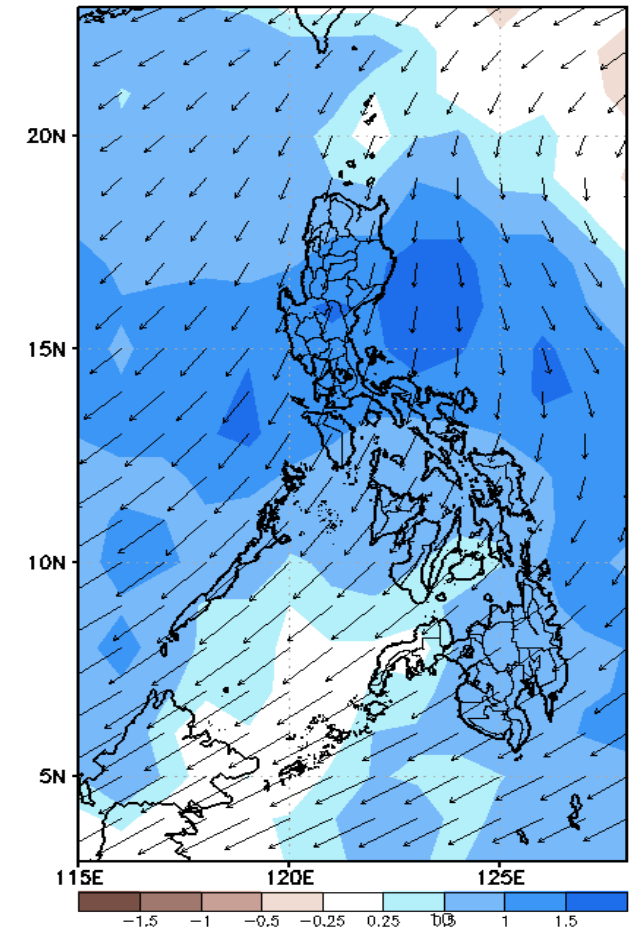
GEFS Week-1 850-hPa Divergence and Wind Anom
Valid: 20220803 - 20220809



GEFS Week-1 700-hPa Divergence and Wind Anom
Valid: 20220803 - 20220809



GEFS Week-1 200-hPa Divergence and Wind Anom
Valid: 20220803 - 20220809

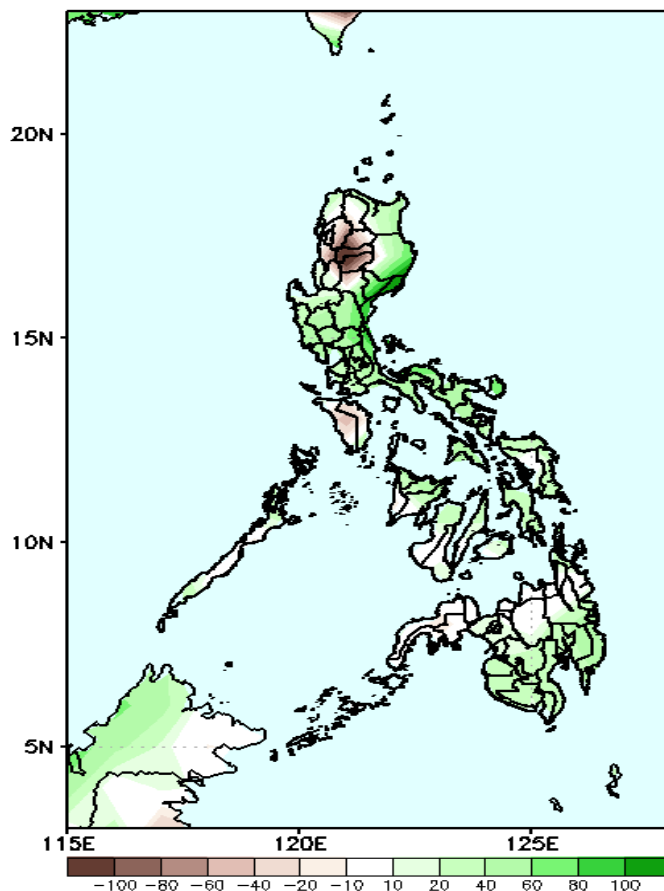


Southwest Monsoon affecting the western sections of Luzon and Visayas while Easterlies affecting the rest of the country during the forecast period.

Precipitation Anomaly and Exceedance Probability > 25/50 mm

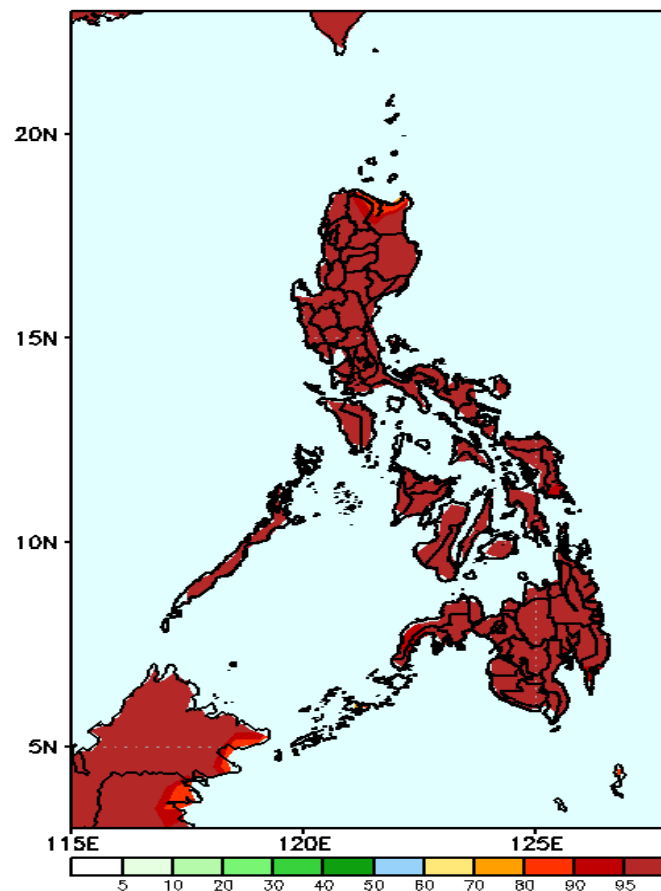
Week 1: Aug 03-09, 2022

GEFS Week-1 Precip. Anomaly
Valid: 20220803 - 20220809



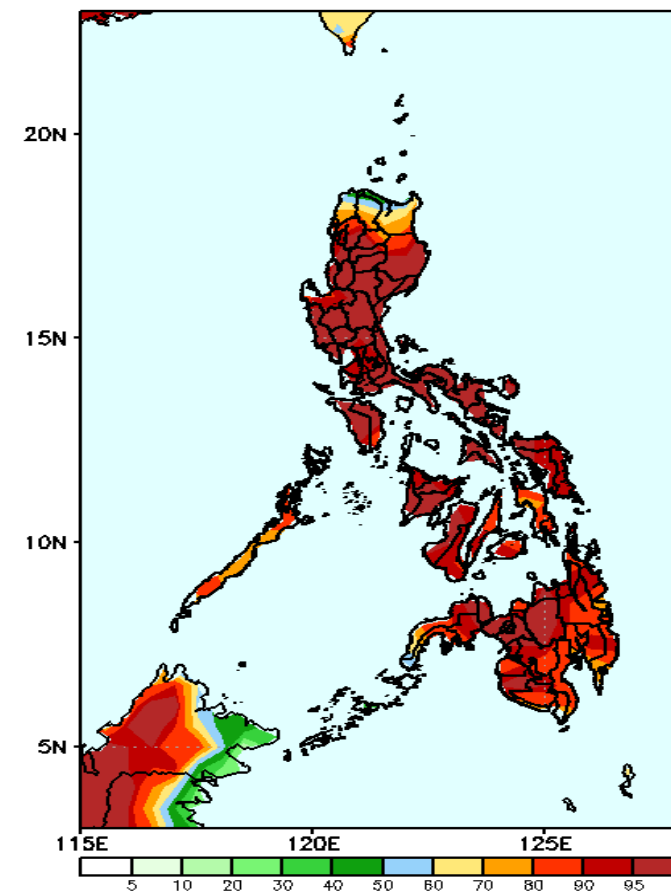
Increase of rainfall of 40-100mm is expected in most parts of the country except in Cordillera Region where rainfall deficit of more than 100mm is more likely during the forecast period.

GEFS Week-1 Exceedance Prob. > 25mm
Valid: 20220803 - 20220809



High probability of rainfall to exceed 25mm in most parts of the country during the forecast period.

GEFS Week-1 Exceedance Prob. > 50mm
Valid: 20220803 - 20220809



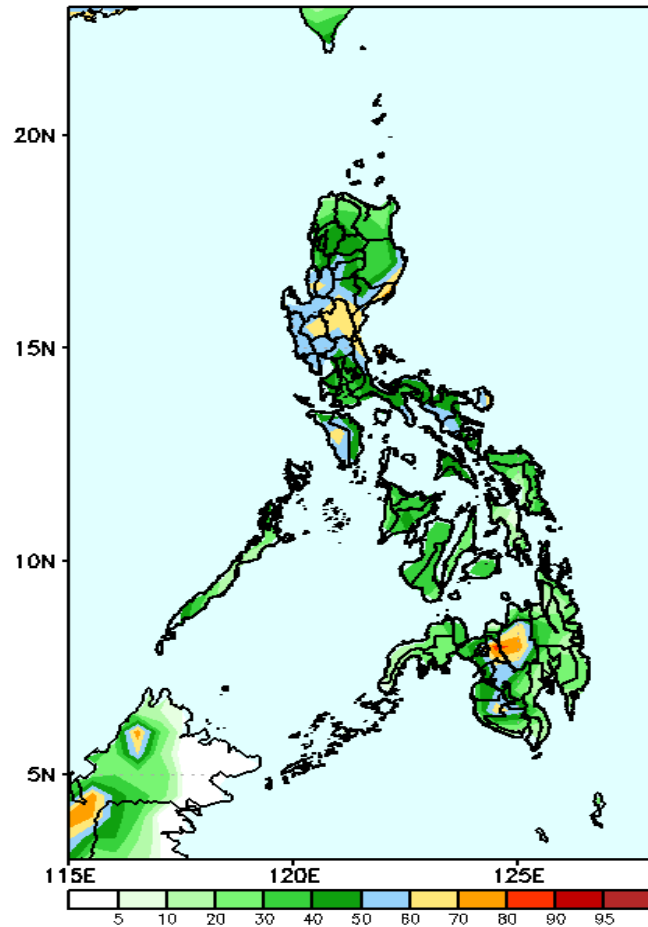
High probability of rainfall to exceed 50mm in most parts of the country during the forecast period.



Exceedance Probability > 100/150/200 mm

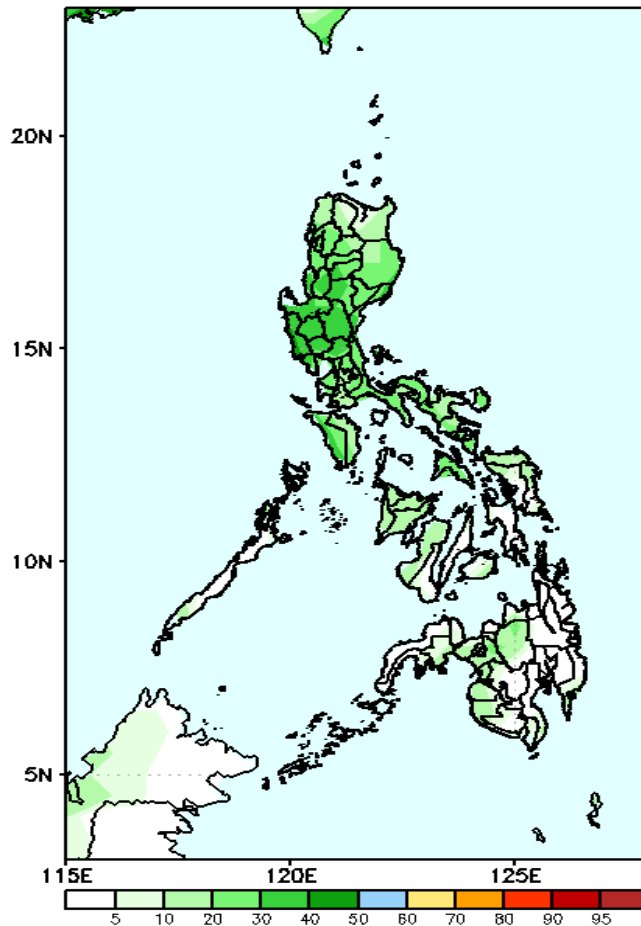
Week 1: Aug 03-09, 2022

GEFS Week-1 Exceedance Prob. > 100mm
Valid: 20220803 - 20220809



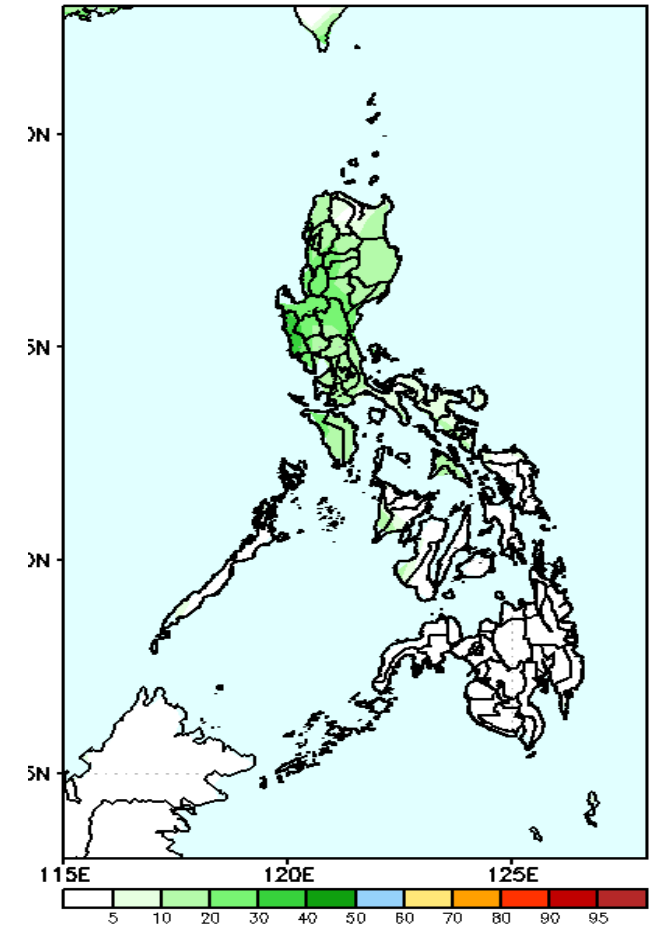
Low probability of rainfall to exceed 100mm in most parts of the country except in Central Luzon and Bukidnon where there is 60-80% chance during the forecast period.

GEFS Week-1 Exceedance Prob. > 150mm
Valid: 20220803 - 20220809



Low probability of rainfall to exceed 150mm in most parts of the country during the forecast period.

GEFS Week-1 Exceedance Prob. > 200mm
Valid: 20220803 - 20220809

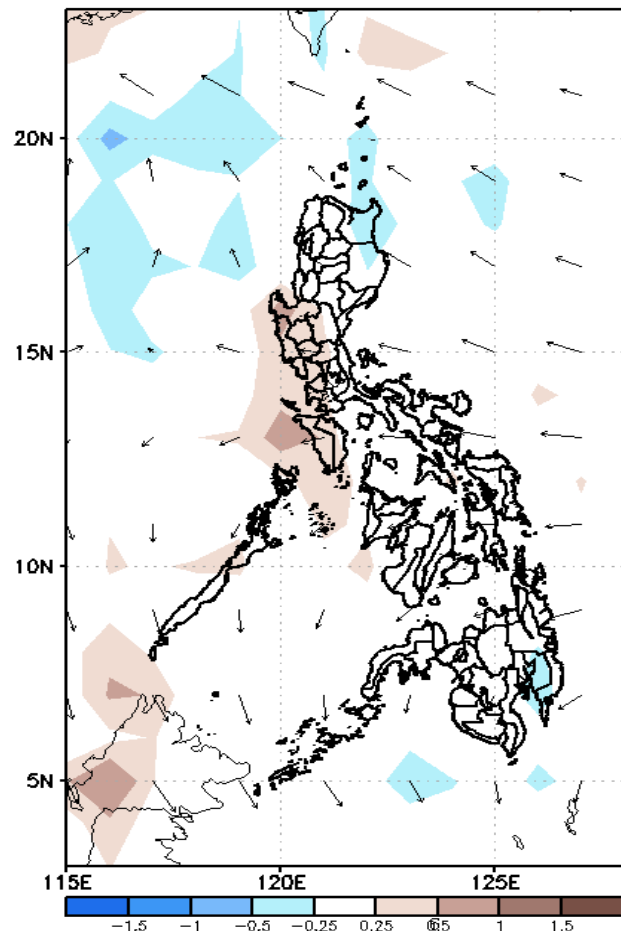


Low probability of rainfall to exceed 200mm in most parts of the country during the forecast period.

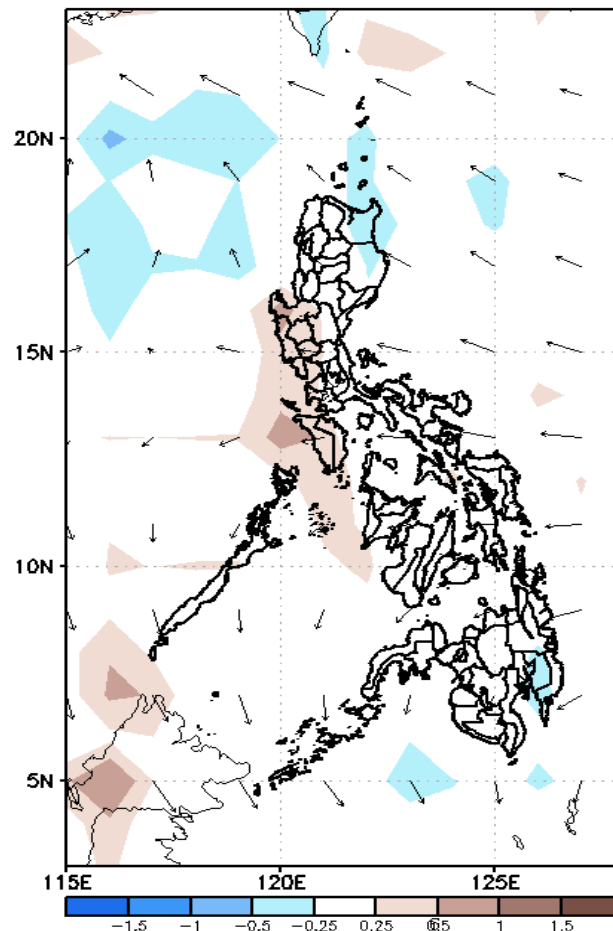
GEFS Week-2 Forecasts: Wind Anomaly Forecast

Week 2: Aug 10-16, 2022

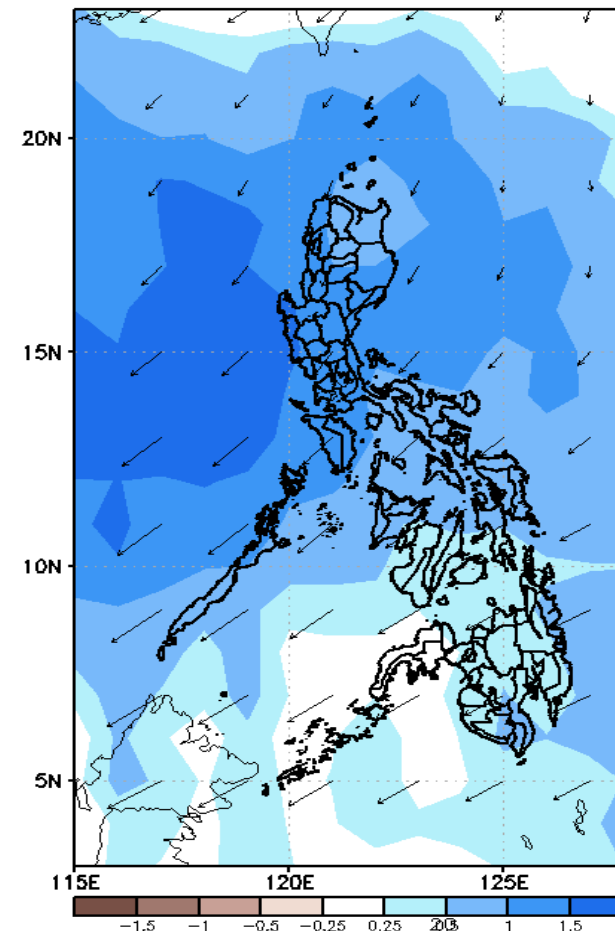
GEFS Week-2 850-hPa Divergence and Wind Anom
Valid: 20220810 - 20220816



GEFS Week-2 700-hPa Divergence and Wind Anom
Valid: 20220810 - 20220816



GEFS week-2 200-hPa Divergence and Wind Anom
Valid: 20220810 - 20220816



Southwest Monsoon affecting the western sections of Luzon and Visayas while Easterlies affecting the rest of the country during the forecast period.

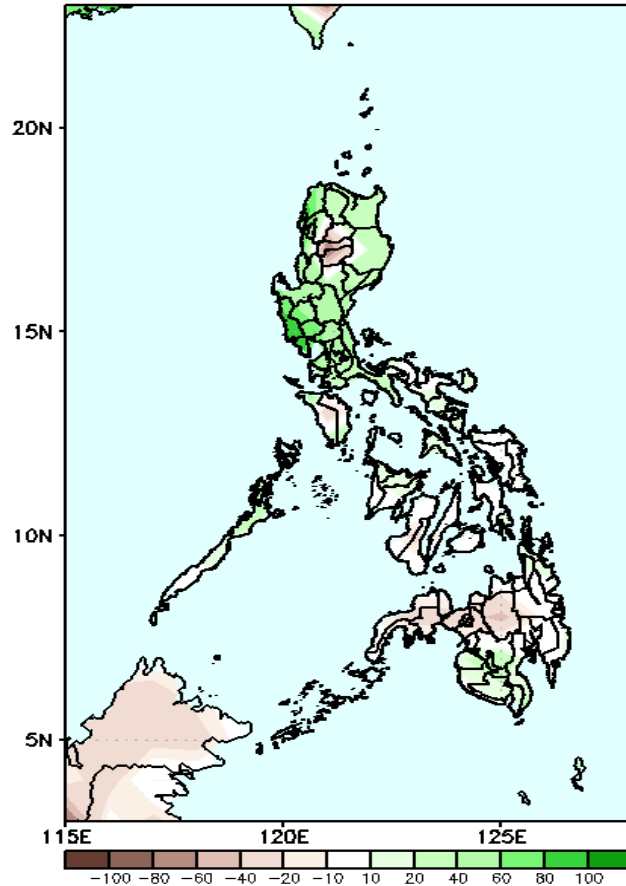
Payong
PAGASA



Precipitation Anomaly and Exceedance Probability > 25/50 mm

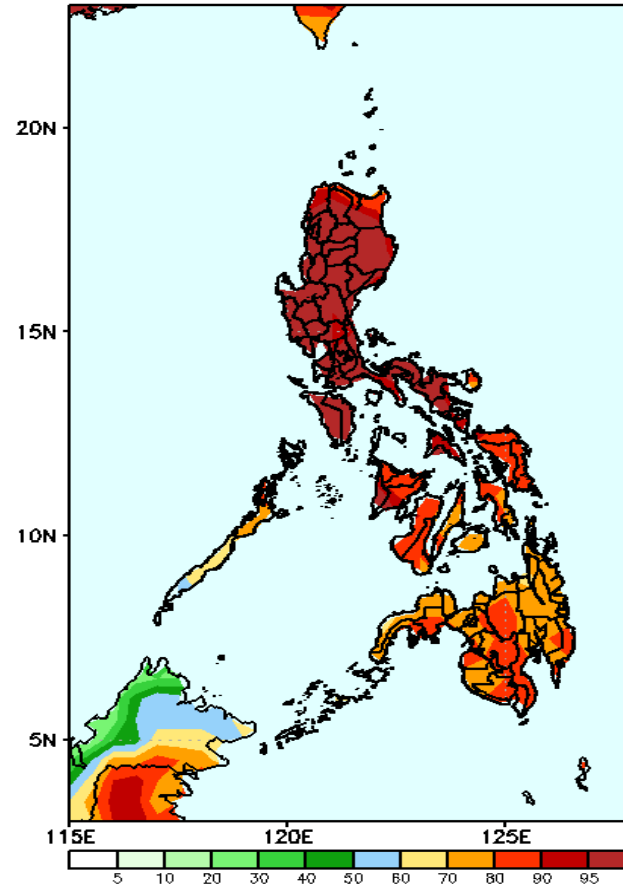
Week 2: Aug 10-16, 2022

GEFS Week-2 Precip Anomaly
Valid: 20220810 - 20220816



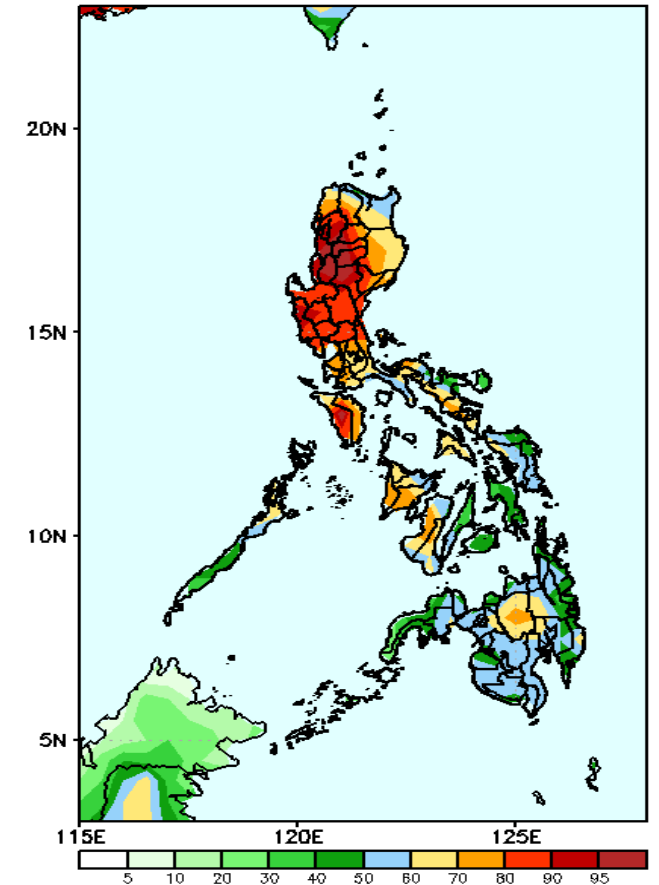
Rainfall deficit of 20-60 mm is expected in Mt. Province, Apayao, most parts of Visayas and Mindanao while 60-100mm increase in most parts of Luzon during the forecast period.

GEFS Week-2 Exceedance Prob. > 25mm
Valid: 20220810 - 20220816



High probability of rainfall to exceed 25mm in most parts of the country during the forecast period.

GEFS Week-2 Exceedance Prob. > 50mm
Valid: 20220810 - 20220816

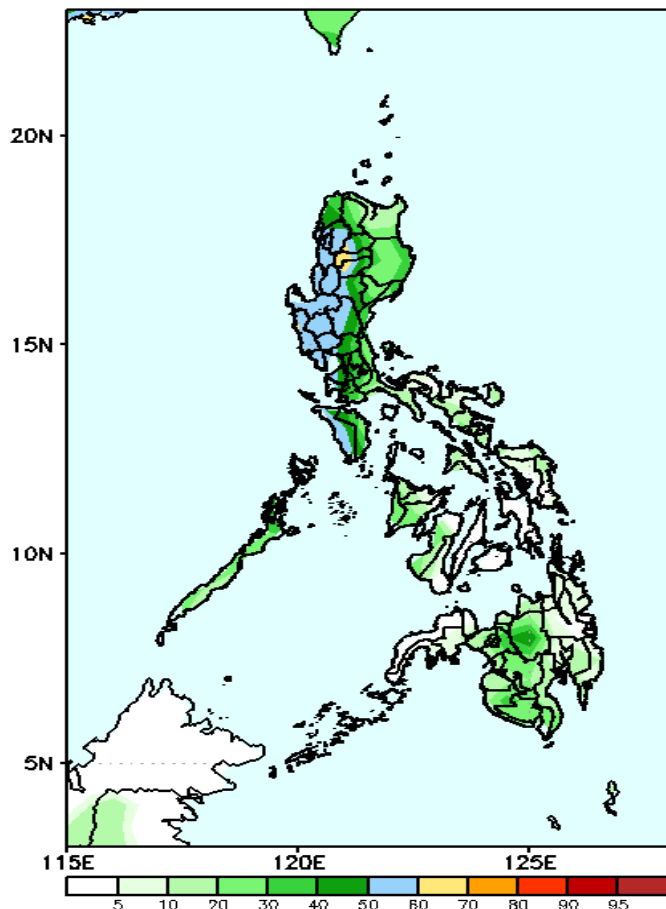


High probability of rainfall to exceed 50mm in most parts of Luzon, Western Visayas and most Bukidnon while less likely for the rest of the country during the forecast period.

Exceedance Probability > 100/150/200 mm

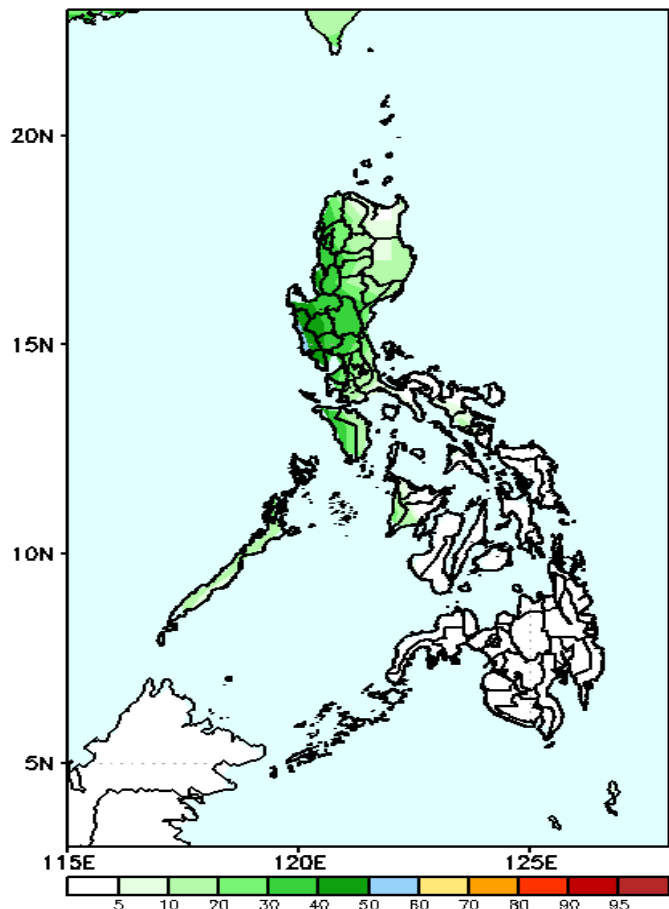
Week 2: Aug 10-16, 2022

GEFS Week-2 Exceedance Prob. > 100mm
Valid: 20220810 – 20220816



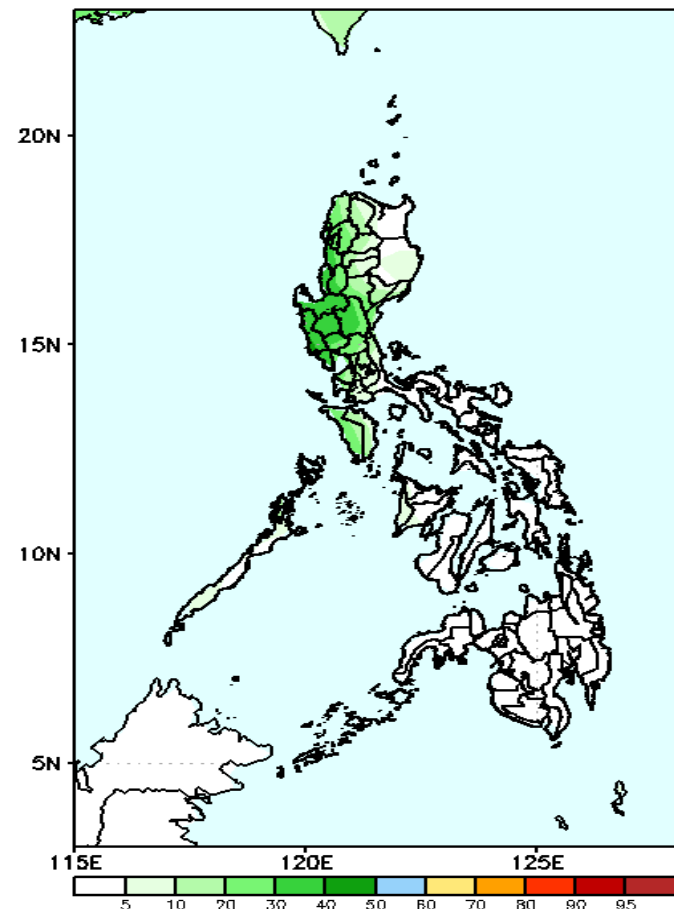
Low probability of rainfall to exceed 100mm in most parts of the country except in Eastern Luzon where there is 60-70% chance during the forecast period.

GEFS Week-2 Exceedance Prob. > 150mm
Valid: 20220810 – 20220816



Low probability of rainfall to exceed 150mm in most parts of the country during the forecast period.

GEFS Week-2 Exceedance Prob. > 200mm
Valid: 20220810 – 20220816

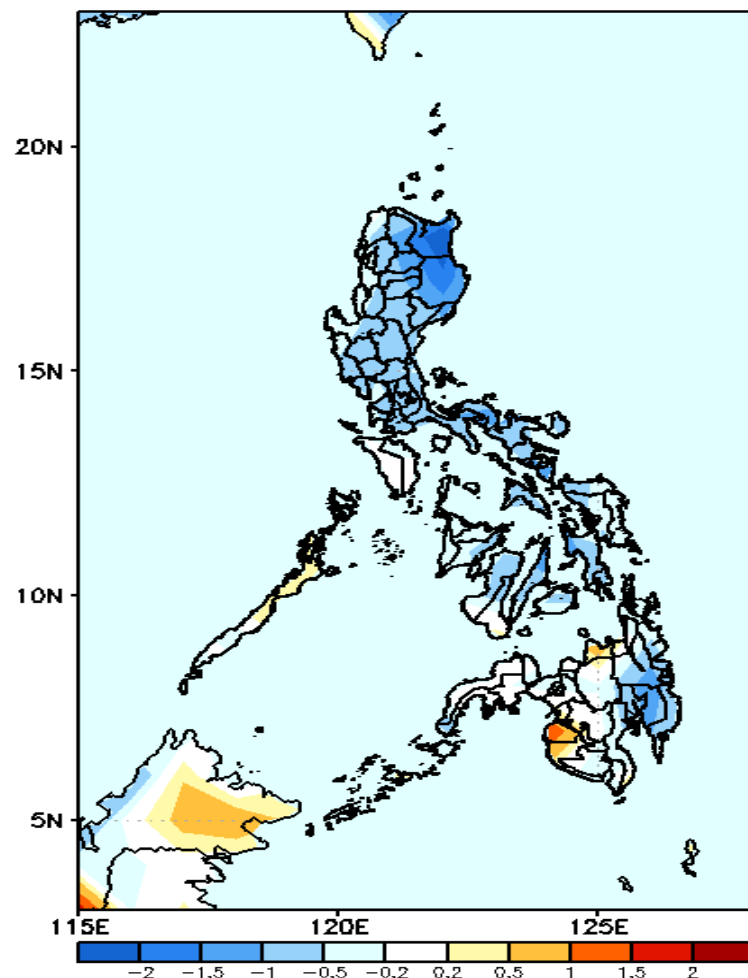


Low probability of rainfall to exceed 200mm in most parts of the country during the forecast period.



GEFS Week-1 & 2 Forecasts: T2m Anomaly

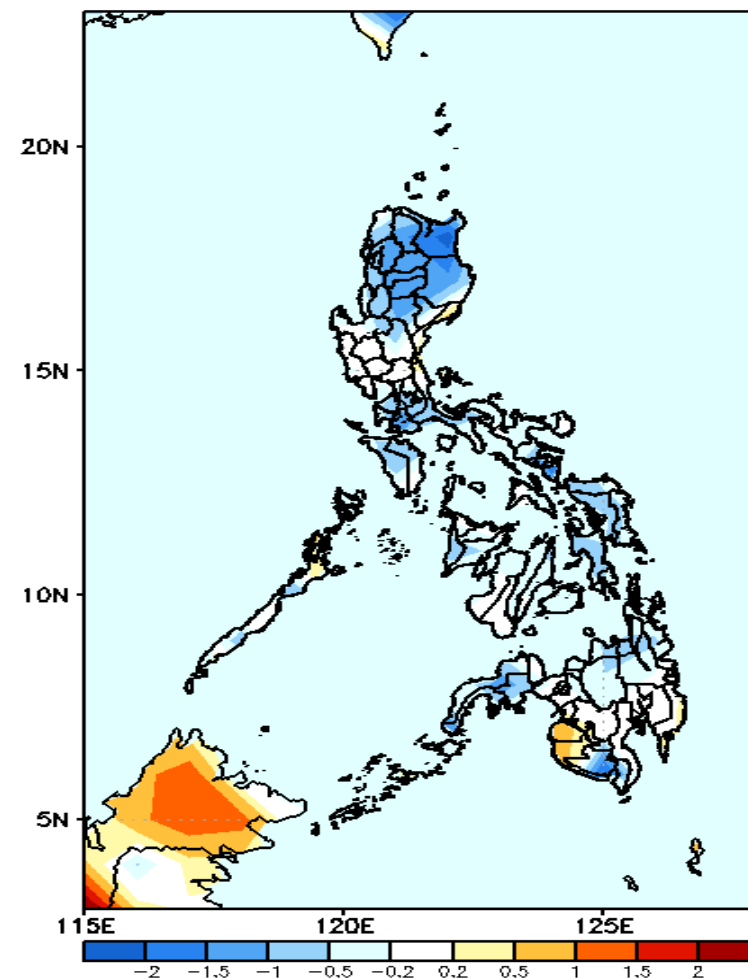
GEFS Week-1 T2m Anomaly
Valid: 20220803 – 20220809



2m Temperature Week 1: Aug 03-09, 2022

Slightly cooler to cooler than average surface air temperature will likely experience in most parts of Luzon, Visayas and eastern Mindanao while near to slightly cooler for the rest of the country during the forecast period.

GEFS Week-2 T2m Anomaly
Valid: 20220810 – 20220816



2m Temperature Week 2: Aug 10-16, 2022

Slightly cooler to cooler than average surface air temperature will likely experience in most parts of Luzon, Visayas and eastern Mindanao while near to slightly cooler for the rest of the country during the forecast period.