



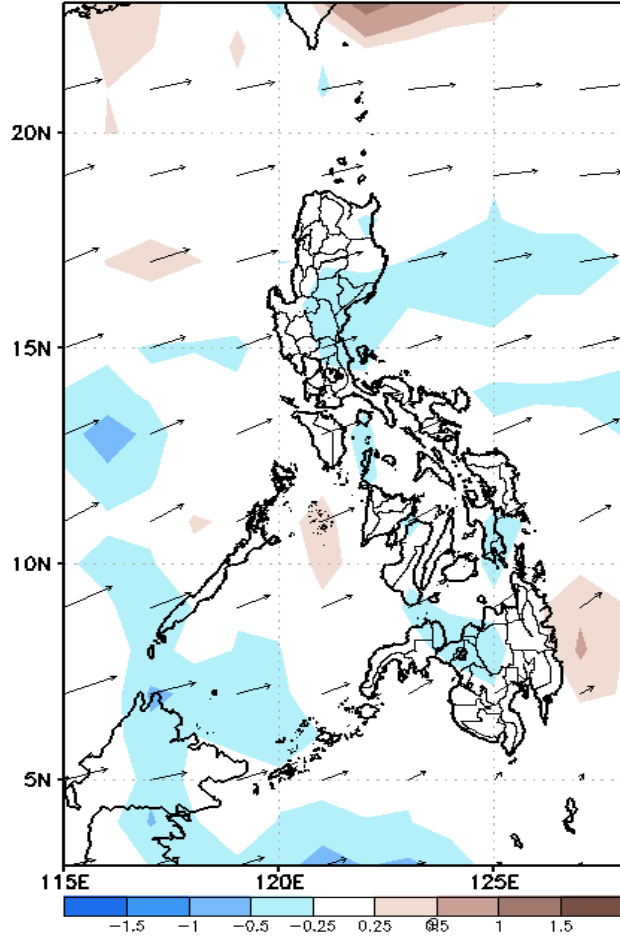
Week 1 & Week 2 Forecast for the Philippines using GEFS Model



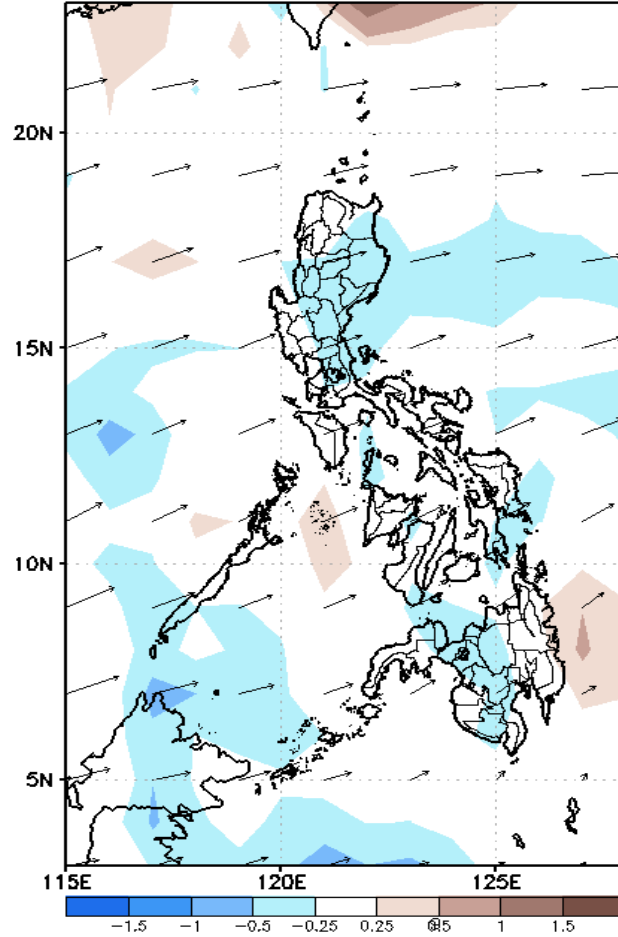
GEFS Week-1 Forecasts: Divergence & Wind Anomaly

Week 1: Jan 03-09, 2021

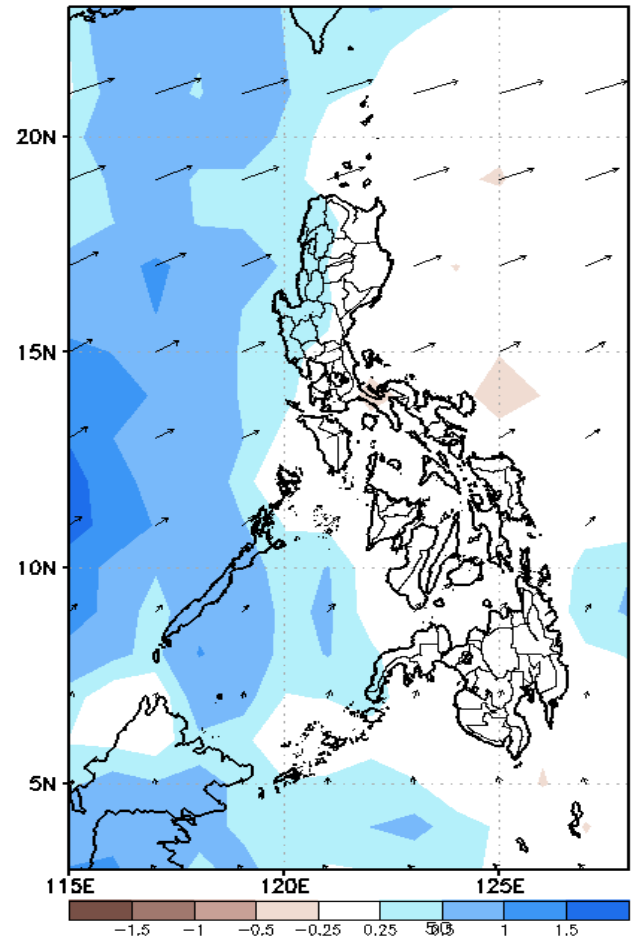
GEFS Week-1 850-hPa Divergence and Wind Anom
Valid: 20220103 - 20220109



GEFS Week-1 700-hPa Divergence and Wind Anom
Valid: 20220103 - 20220109



GEFS Week-1 200-hPa Divergence and Wind Anom
Valid: 20220103 - 20220109

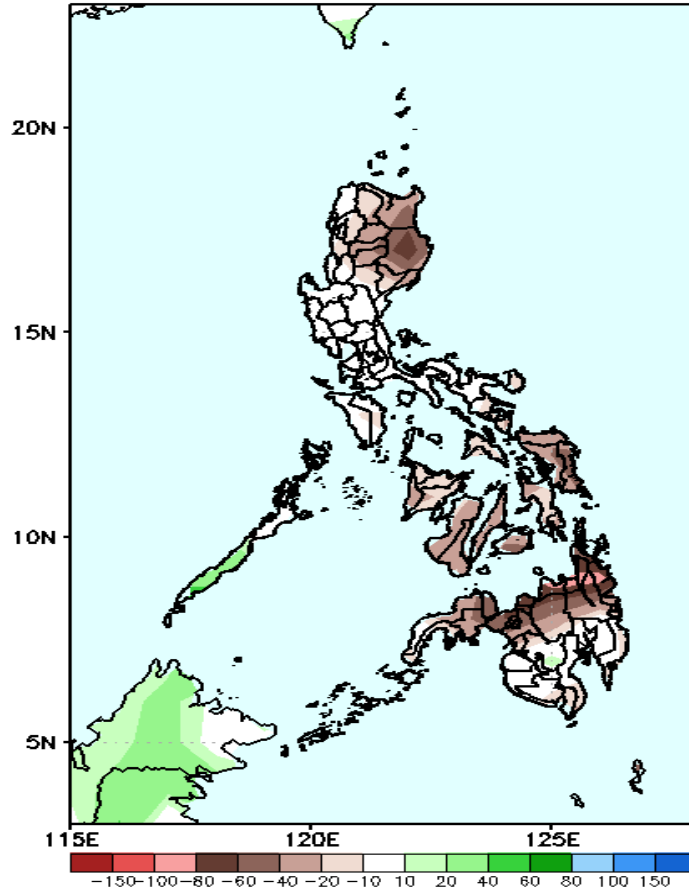


Upper and low level Divergence suggest likelihood of light to moderate precipitation in parts of Northern and Central Luzon Palawan and parts of Visayas and Mindanao. Northeast Monsoon affecting Eastern sections of Luzon and Visayas while Easterlies affecting the rest of the country during the forecast period.

Precipitation Anomaly and Exceedance Probability > 25/50 mm

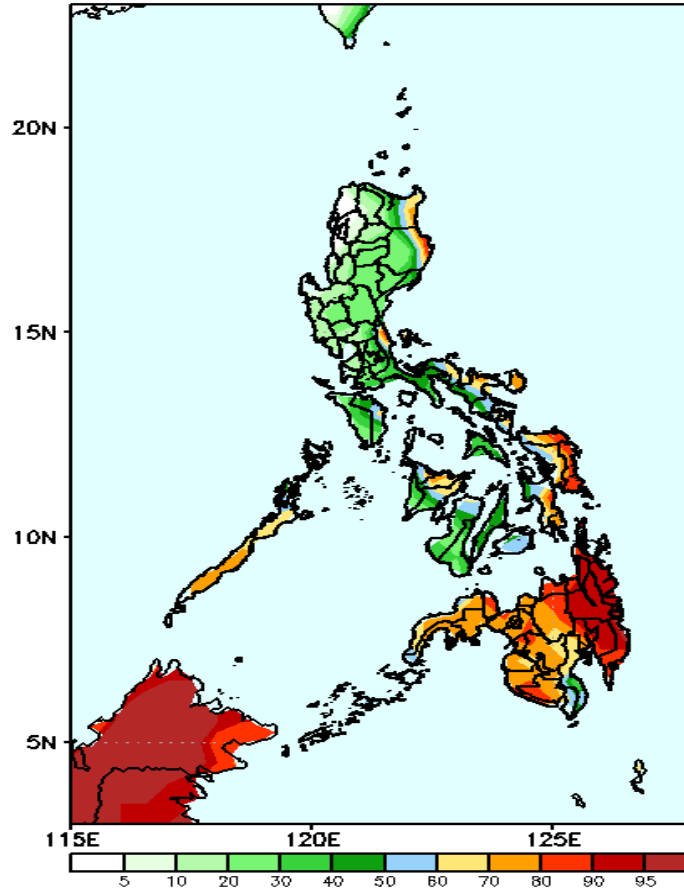
Week 1: Jan 03-09, 2021

GEFS Week-1 Precip Anomaly
Valid: 20220103 - 20220109



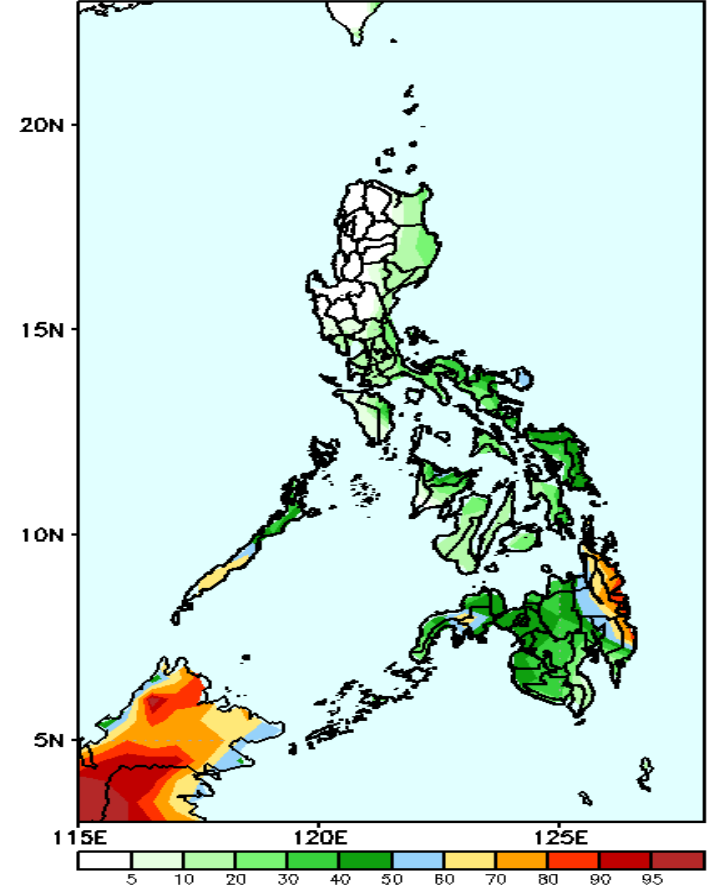
Rainfall deficit of 40-80mm is expected in most parts of Cordillera Region, Cagayan Valley, most parts of Visayas and northern half of Mindanao during the forecast period.

GEFS Week-1 Exceedance Prob. > 25mm
Valid: 20220103 - 20220109



High probability of rainfall to exceed 25mm in the eastern sections of Cagayan and Isabela, parts of Quezon and Bicol region, Palawan, Eastern Visayas, northern portion of Panay Island and most parts of Mindanao while less likely for the rest of the county during the forecast period.

GEFS Week-1 Exceedance Prob. > 50mm
Valid: 20220103 - 20220109



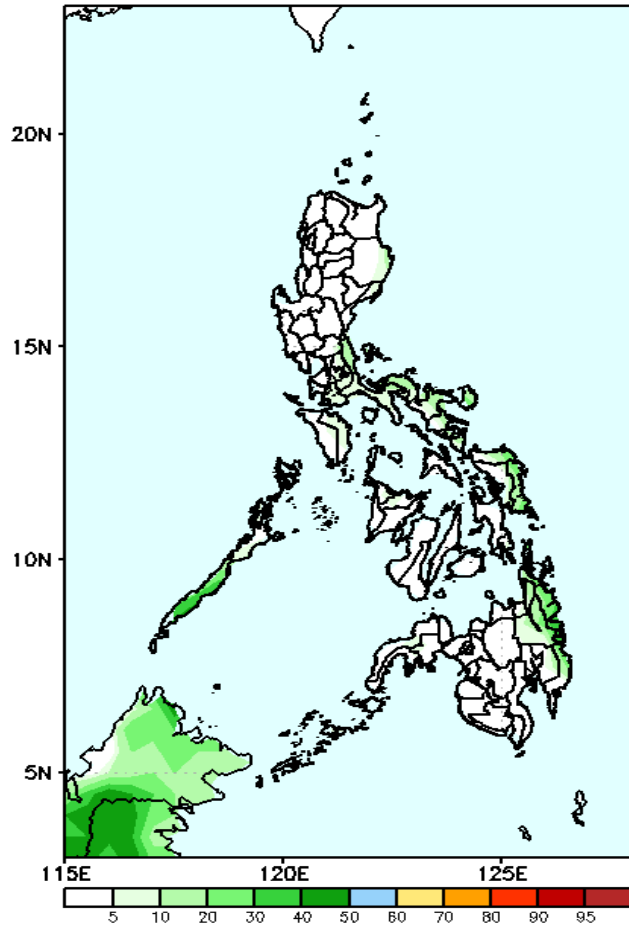
Low probability of rainfall to exceed 50mm in most parts of the country except parts of Palawan, CARAGA and parts of Davao Oriental during the forecast period.



Exceedance Probability > 100/150/200 mm

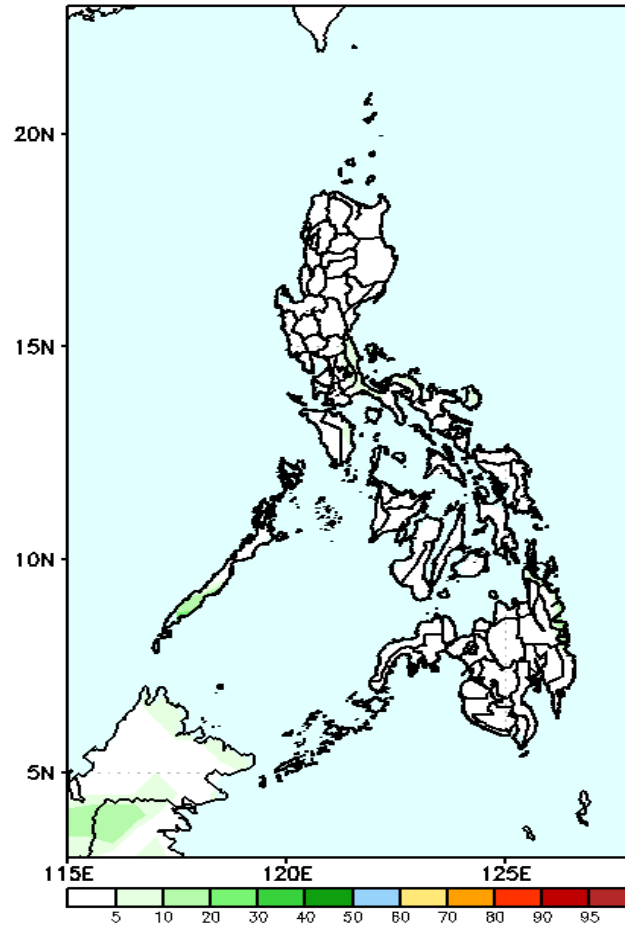
Week 1: Jan 03-09, 2021

GEFS Week-1 Exceedance Prob. > 100mm
Valid: 20220103 - 20220109



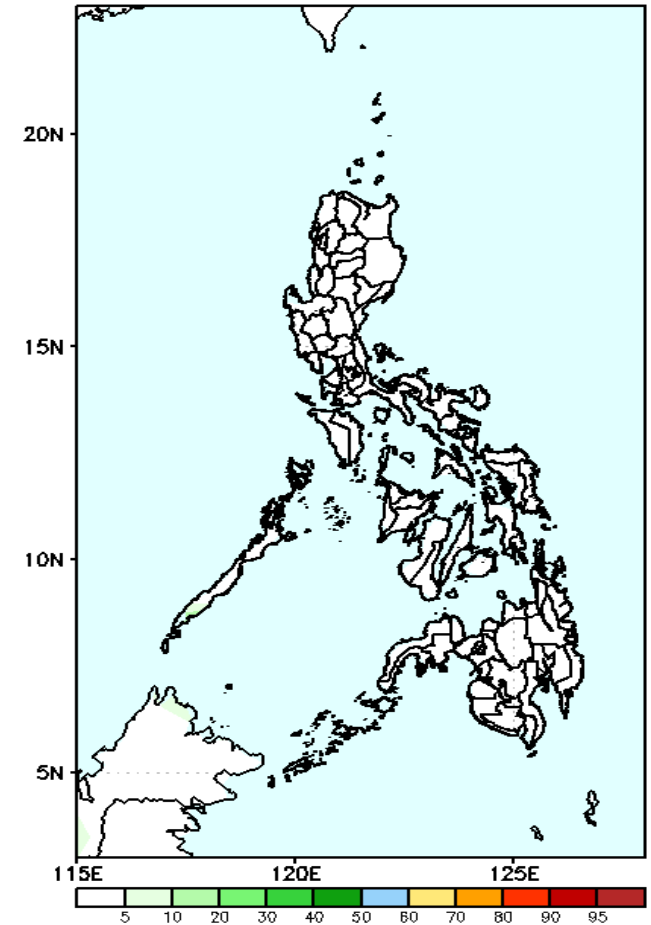
Less probability of rainfall to exceed 100mm in most parts of the country is expected during the forecast period.

GEFS Week-1 Exceedance Prob. > 150mm
Valid: 20220103 - 20220109



Less probability of rainfall to exceed 150mm in most parts of the country is expected during the forecast period.

GEFS Week-1 Exceedance Prob. > 200mm
Valid: 20220103 - 20220109



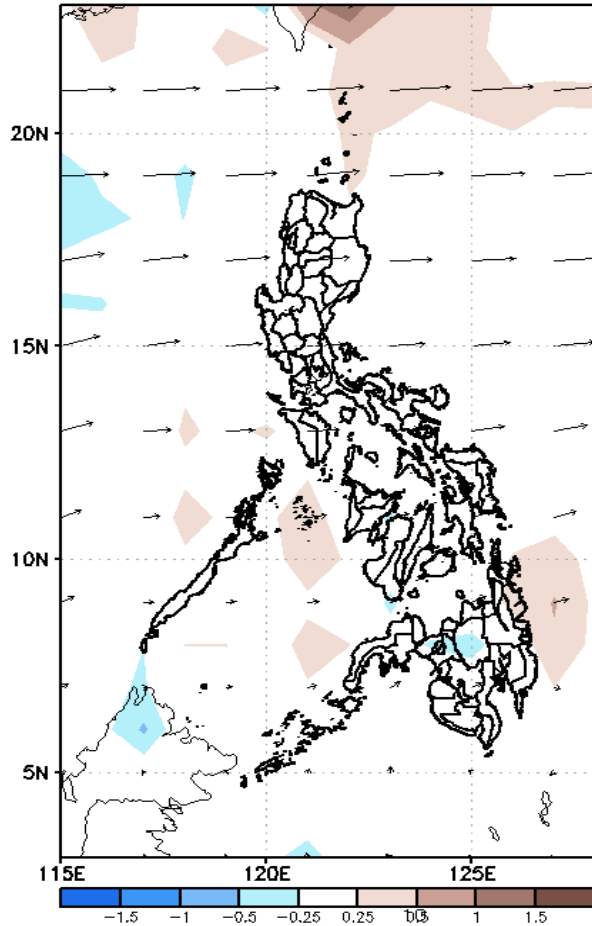
Less probability of rainfall to exceed 200mm in most parts of the country is expected during the forecast period.



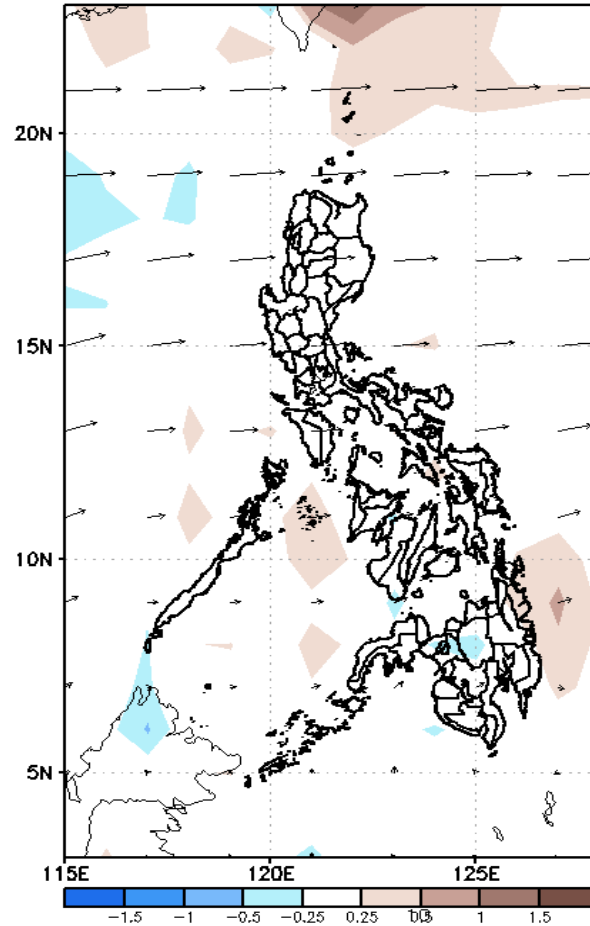
GEFS Week-2 Forecasts: Divergence & Wind Anomaly

Week 2: Jan 10-16, 2021

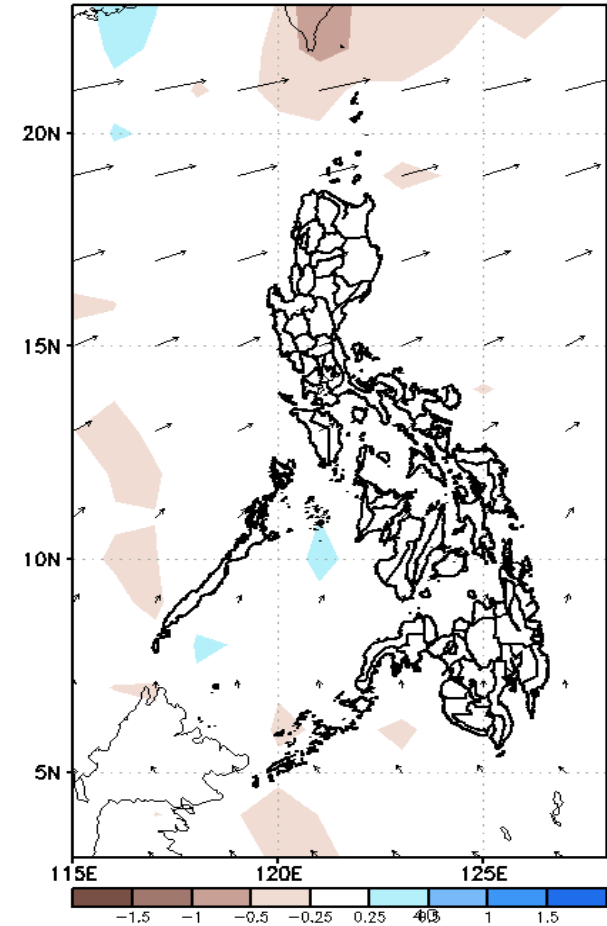
GEFS Week-2 850-hPa Divergence and Wind Anom
Valid: 20220110 - 20220116



GEFS Week-2 700-hPa Divergence and Wind Anom
Valid: 20220110 - 20220116



GEFS week-2 200-hPa Divergence and Wind Anom
Valid: 20220110 - 20220116

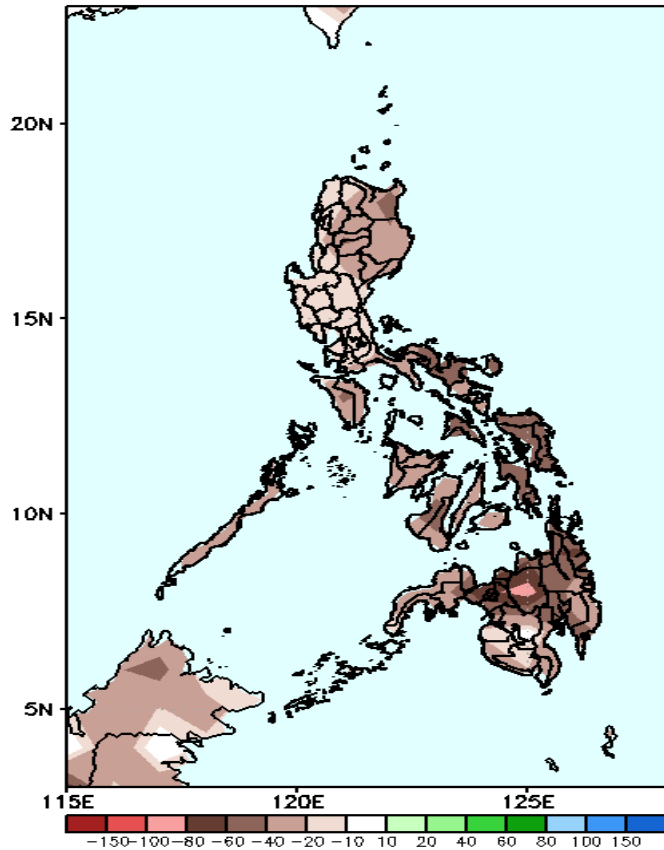


Upper and low level Divergence suggest less likelihood of precipitation in most parts of the country. Northeast Monsoon affecting Northern - Extreme Northern Luzon while Easterlies affecting the rest of the country during the forecast period..

Precipitation Anomaly and Exceedance Probability > 25/50 mm

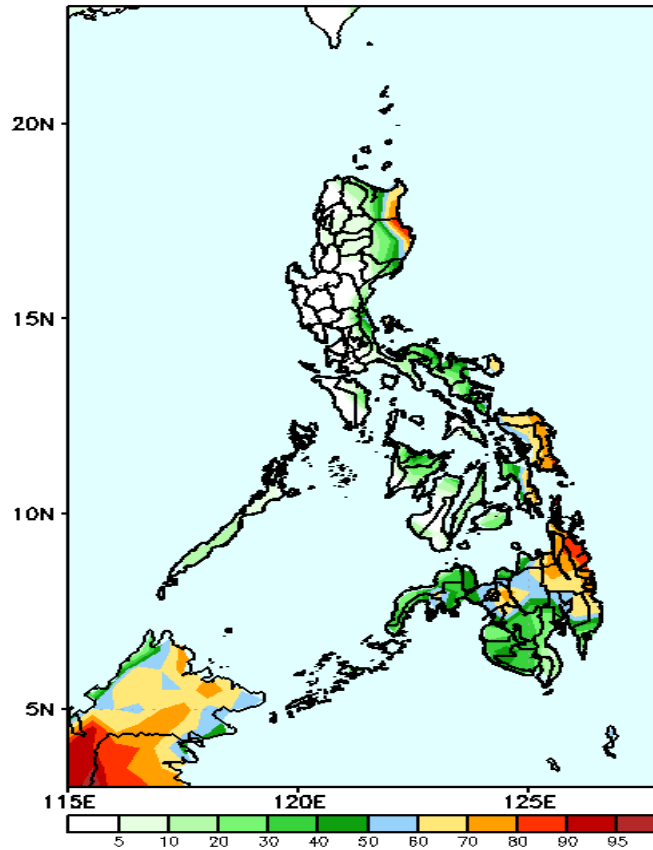
Week 2: Jan 10-16, 2021

GEFS Week-2 Precip Anomaly
Valid: 20220110 - 20220116



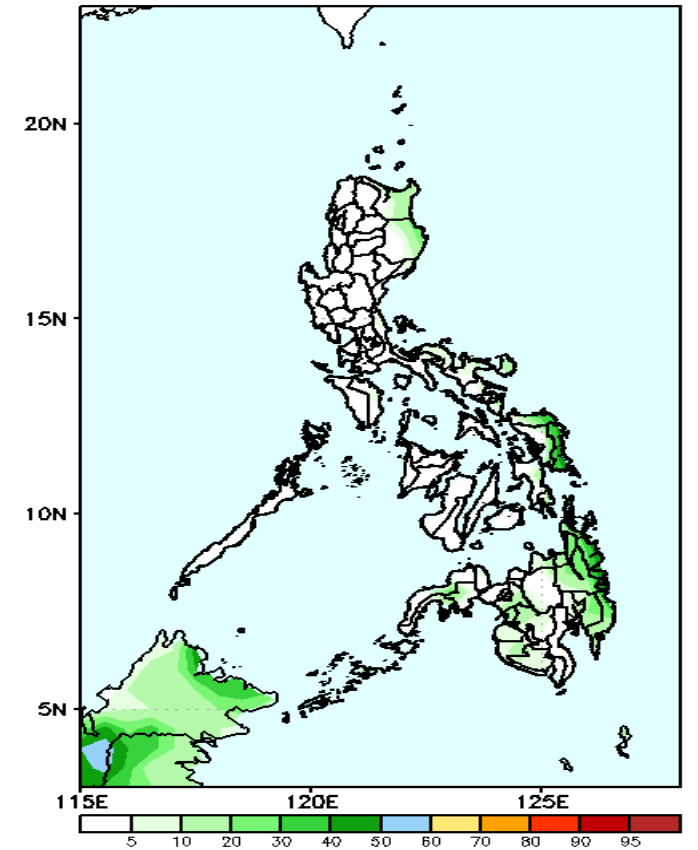
Rainfall deficit of 40-80mm is expected in most parts of the country during the forecast period

GEFS Week-2 Exceedance Prob. > 25mm
Valid: 20220110 - 20220116



High probability of rainfall to exceed 25mm in the eastern sections of Catanduanes, most of Eastern Visayas, CARAGA and parts of Davao region and Northern Mindanao while less likely for the rest of the county during the forecast period.

GEFS Week-2 Exceedance Prob. > 50mm
Valid: 20220110 - 20220116

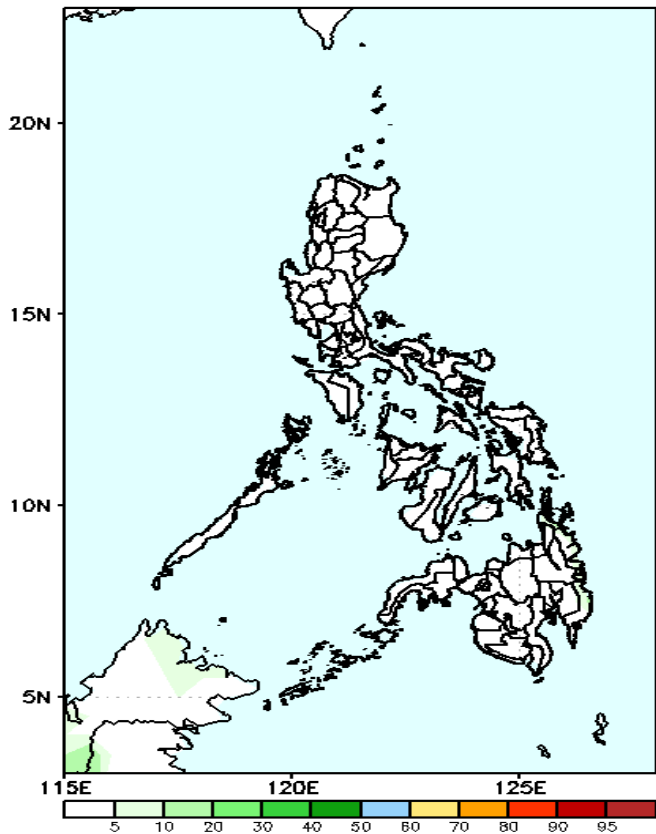


Less probability of rainfall to exceed 50mm in most parts of the country during the forecast period.

Exceedance Probability > 100/150/200 mm

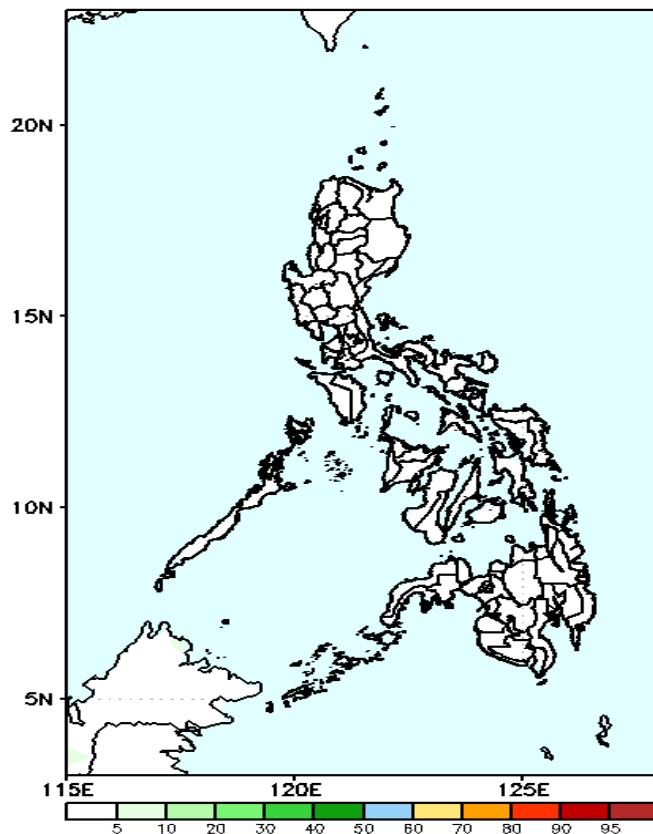
Week 2: Jan 10-16, 2021

GEFS Week-2 Exceedance Prob. > 100mm
Valid: 20220110 - 20220116



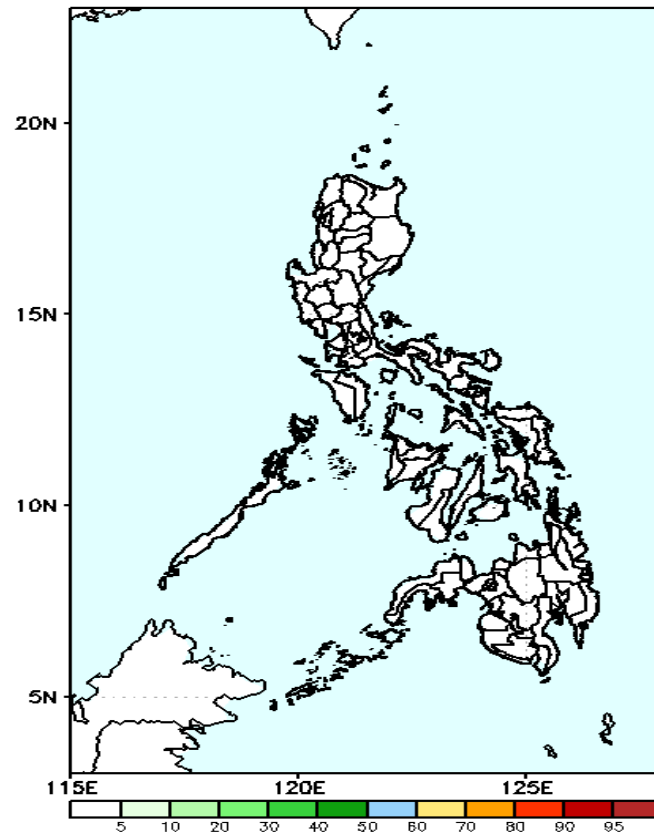
Less probability of rainfall to exceed 100mm in most parts of the country is expected during the forecast period.

GEFS Week-2 Exceedance Prob. > 150mm
Valid: 20220110 - 20220116



Less probability of rainfall to exceed 150mm in most parts of the country is expected during the forecast period.

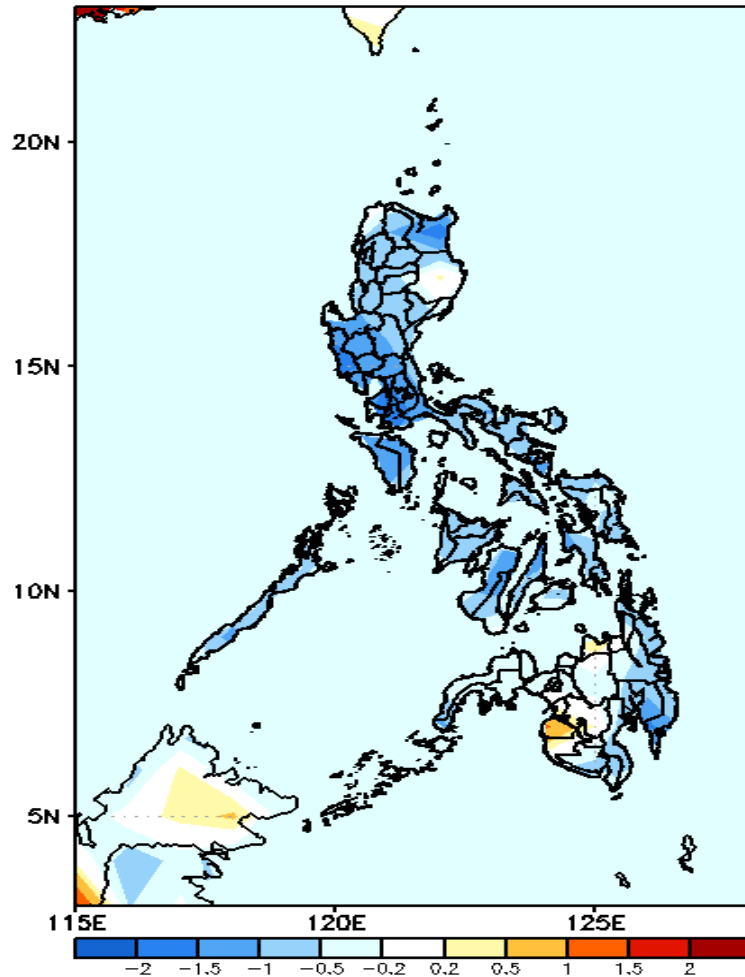
GEFS Week-2 Exceedance Prob. > 200mm
Valid: 20220110 - 20220116



Less probability of rainfall to exceed 200mm in most parts of the country is expected during the forecast period.

GEFS Week-1 & 2 Forecasts: T2m Anomaly

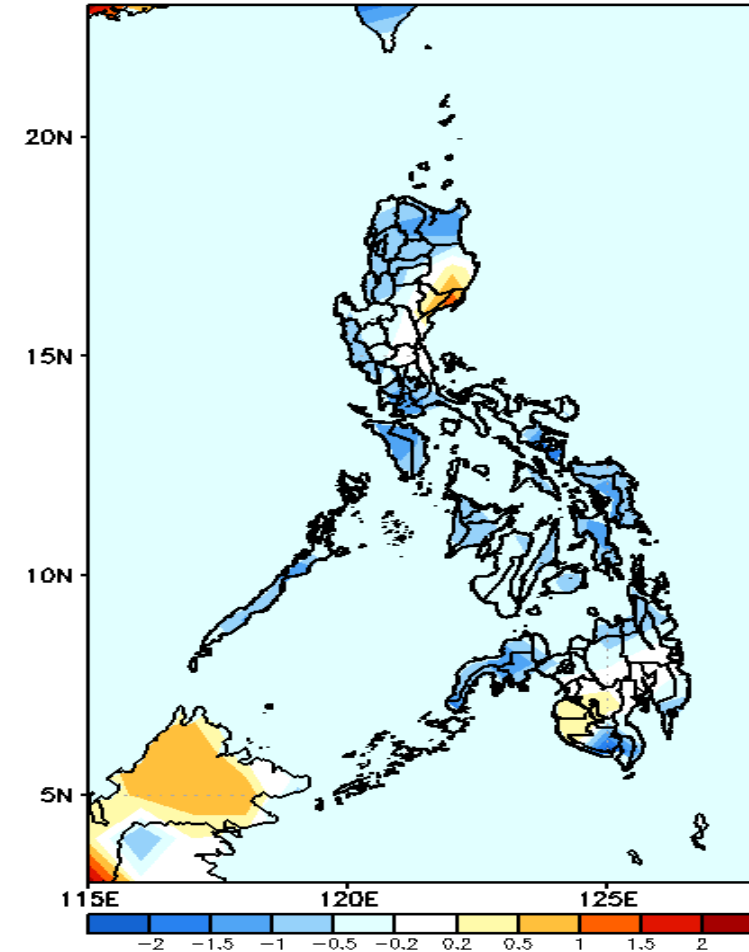
GEFS Week-1 T2m Anomaly
Valid: 20220103 - 20220109



2m Temperature Week 1: Jan 03-09, 2021

Cooler than average surface air temperature will likely experience in most parts of the country except in Isabela & western parts of Mindanao during the forecast period.

GEFS Week-2 T2m Anomaly
Valid: 20220110 - 20220116



2m Temperature Week 2: Jan 10-16, 2021

Cooler than average surface air temperature will likely experience in most parts of the country except in Isabela, Quirino, Aurora, Maguindano, Sultan Kudarat and North Cotabato during the forecast period.