



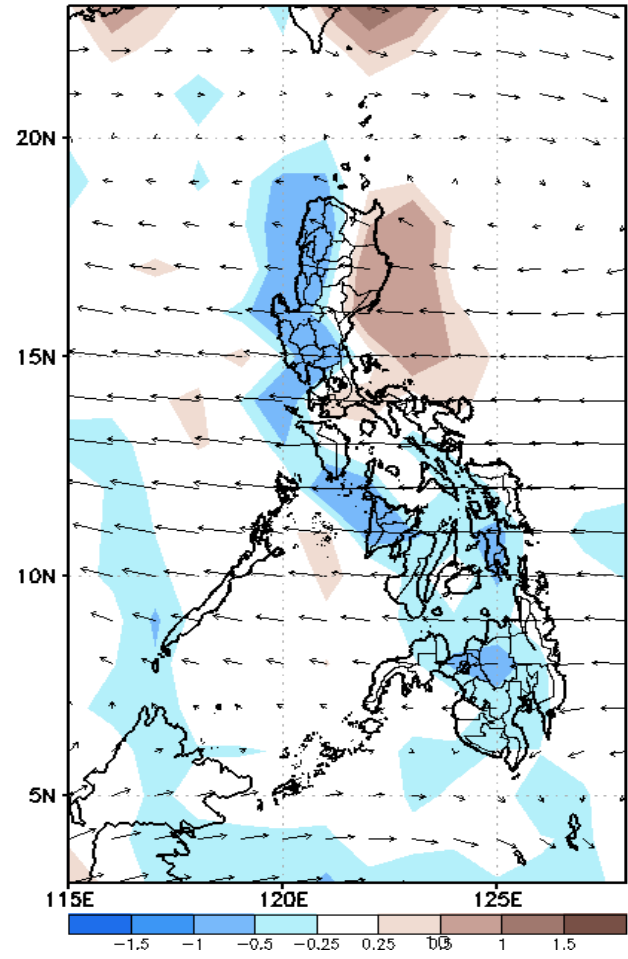
# Week 1 & Week 2 Forecast for the Philippines using GEFS Model



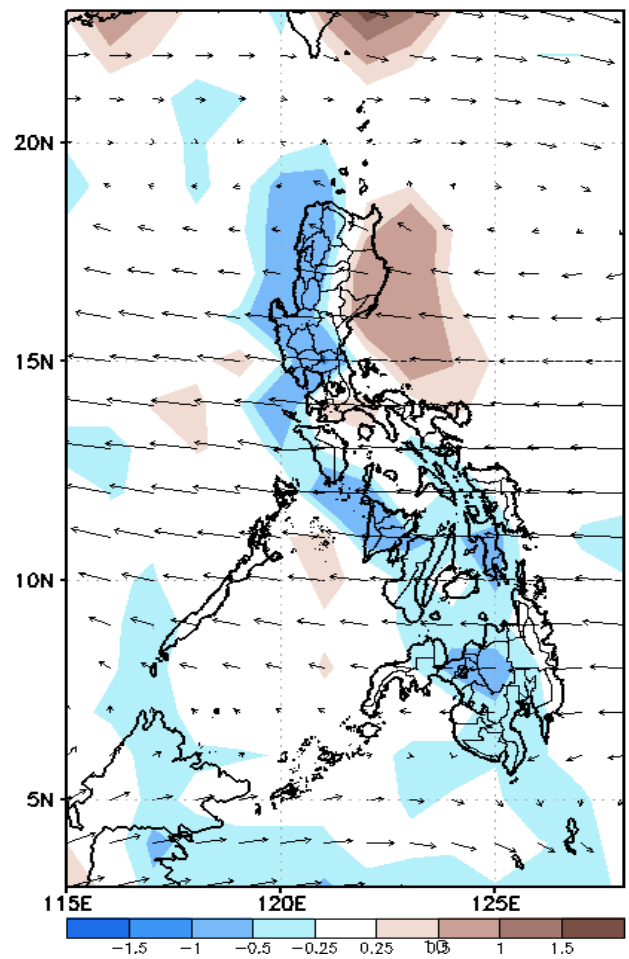
# GEFS Week-1 Forecasts: Wind Anomaly Forecast

Week 1: Jan 03-09, 2023

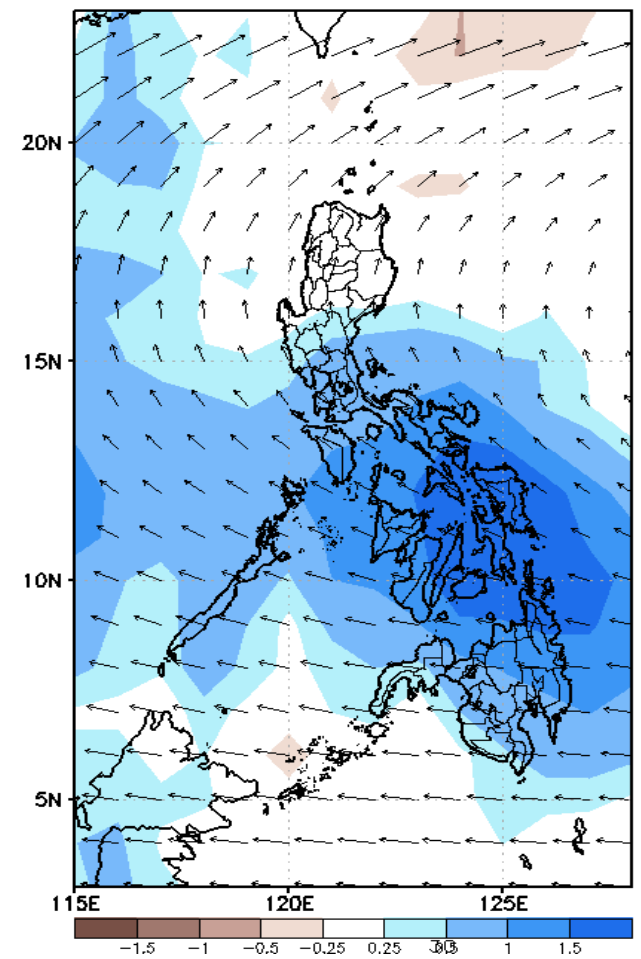
GEFS Week-1 850-hPa Divergence and Wind Anom  
Valid: 20230103 - 20230109



GEFS Week-1 700-hPa Divergence and Wind Anom  
Valid: 20230103 - 20230109



GEFS Week-1 200-hPa Divergence and Wind Anom  
Valid: 20230103 - 20230109

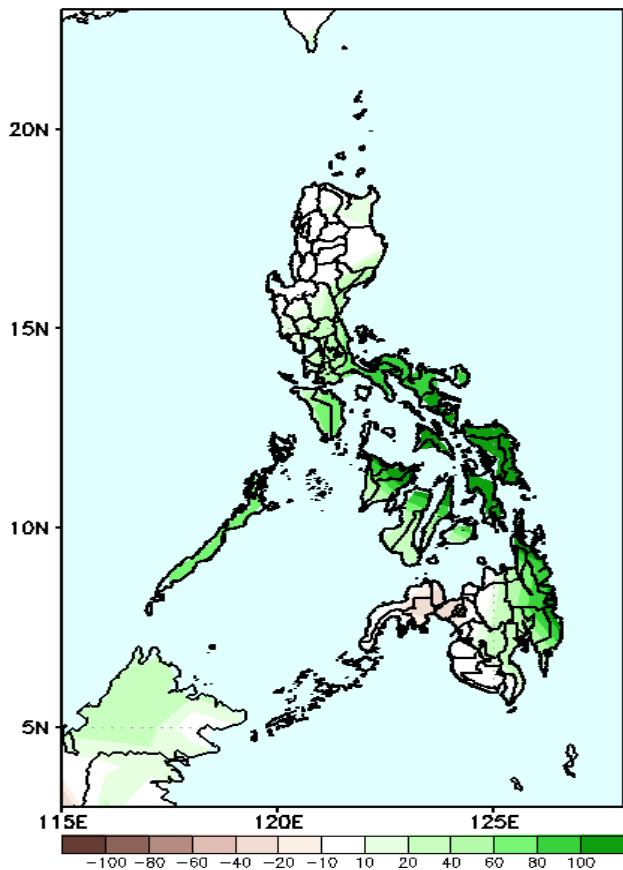


Northeast monsoon affecting most parts of Luzon. Easterlies affecting Visayas and Mindanao during the forecast period.

# Precipitation Anomaly and Exceedance Probability > 25/50 mm

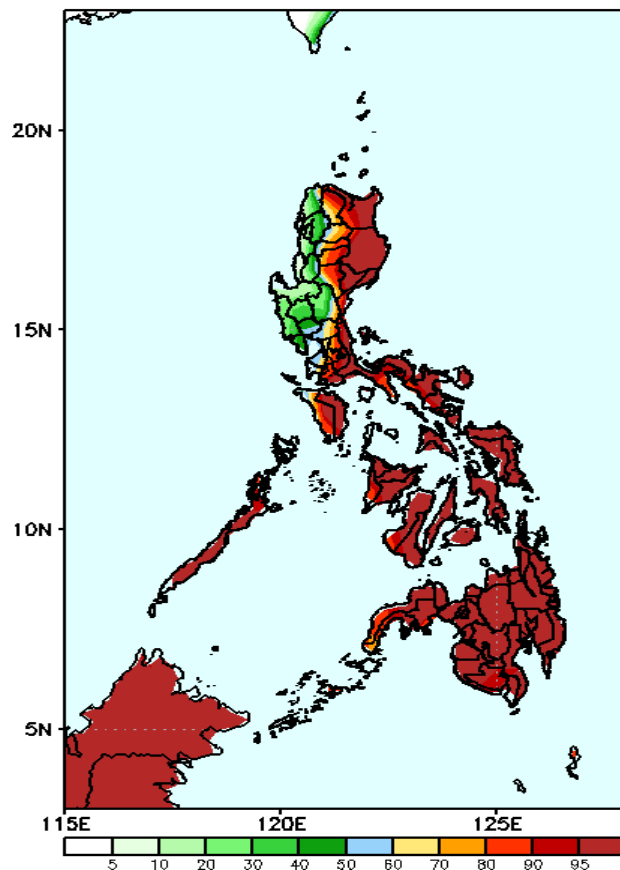
Week 1: Jan 03-09, 2023

GEFS Week-1 Precip Anomaly  
Valid: 20230103 - 20230109



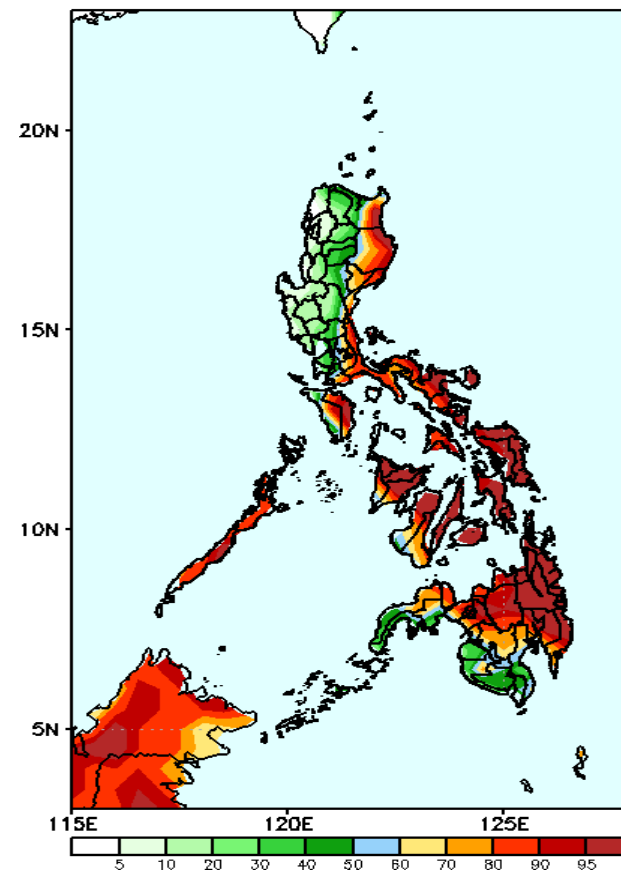
Increase of rainfall of more than 100mm is expected in most parts of Visayas and eastern Mindanao and 40-100mm in Southern Luzon, Bicol Region and central Mindanao during the forecast period.

GEFS Week-1 Exceedance Prob. > 25mm  
Valid: 20230103 - 20230109



High probability of rainfall to exceed 25mm in most parts of the country except Ilocos region and Central Luzon (except Aurora) during the forecast period.

GEFS Week-1 Exceedance Prob. > 50mm  
Valid: 20230103 - 20230109



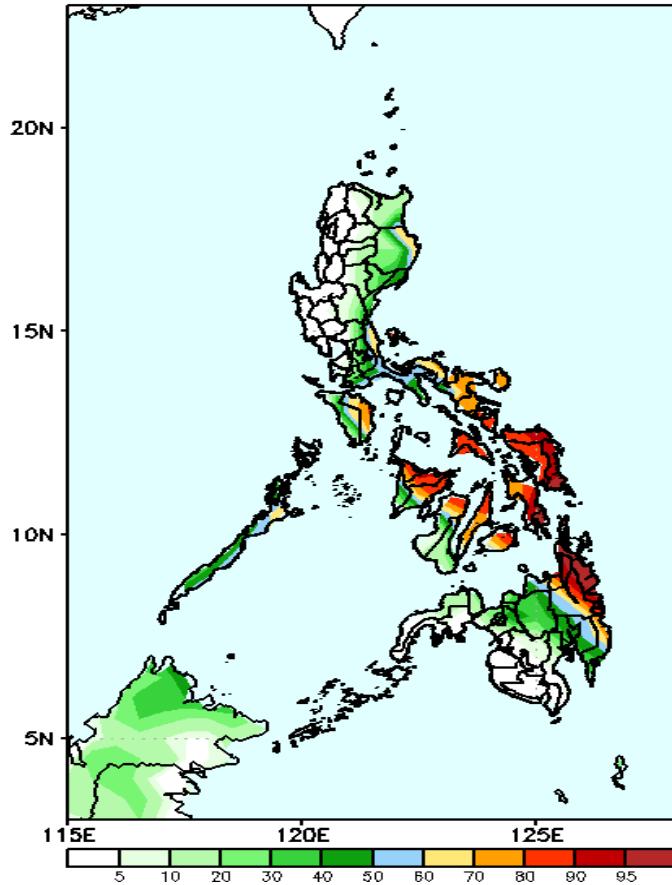
High probability of rainfall to exceed 50mm in Apayao, Cagayan, Isabela, southern Luzon, Bicol region, most parts of Visayas and Mindanao (except southwestern parts) while less likely for the rest of the Luzon during the forecast period.



# Exceedance Probability > 100/150/200 mm

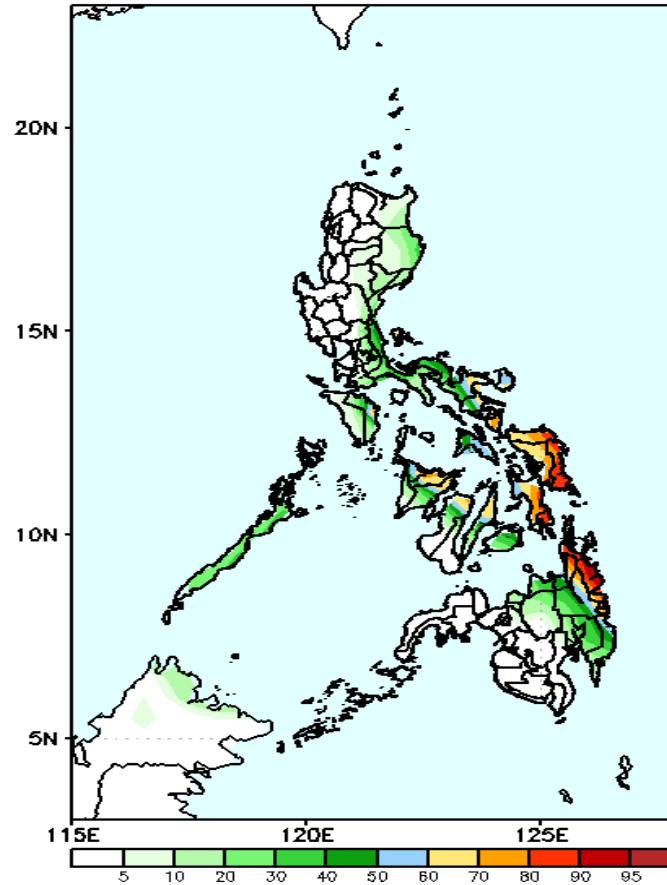
Week 1: Jan 03-09, 2023

GEFS Week-1 Exceedance Prob. > 100mm  
Valid: 20230103 - 20230109



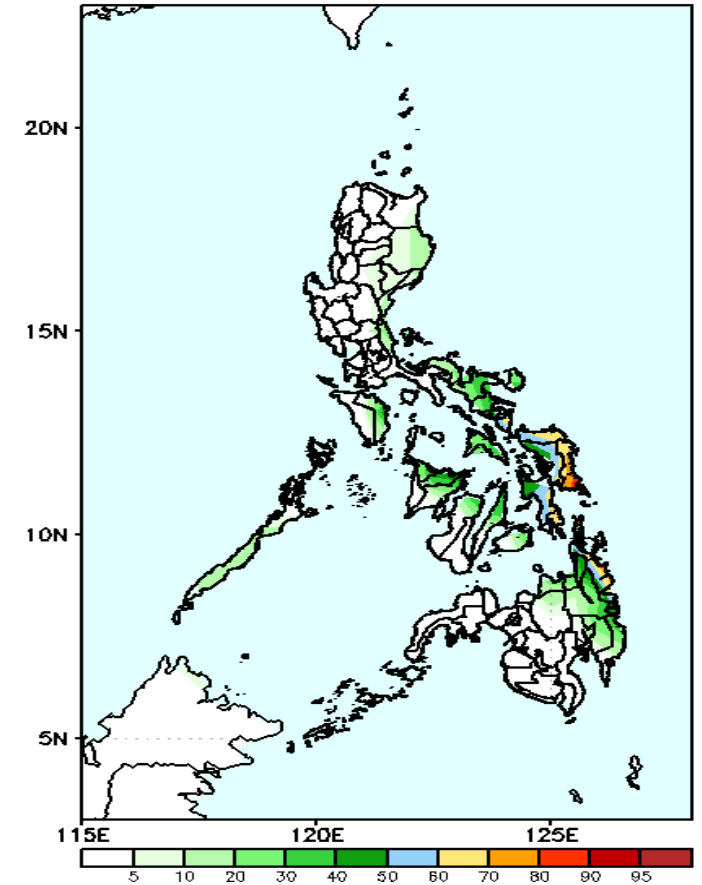
High probability of rainfall to exceed 100mm in some areas in Occ. Mindoro, Bicol Region, and most parts of Visayas (except some areas in the western part) and CARAGA Region while less likely for the rest of the country during the forecast period.

GEFS Week-1 Exceedance Prob. > 150mm  
Valid: 20230103 - 20230109



70-95% probability of rainfall to exceed 150mm in Sorsogon, Camarines Sur, Capiz, Eastern Visayas and eastern CARAGA while less likely for the rest of the country during the forecast period.

GEFS Week-1 Exceedance Prob. > 200mm  
Valid: 20230103 - 20230109

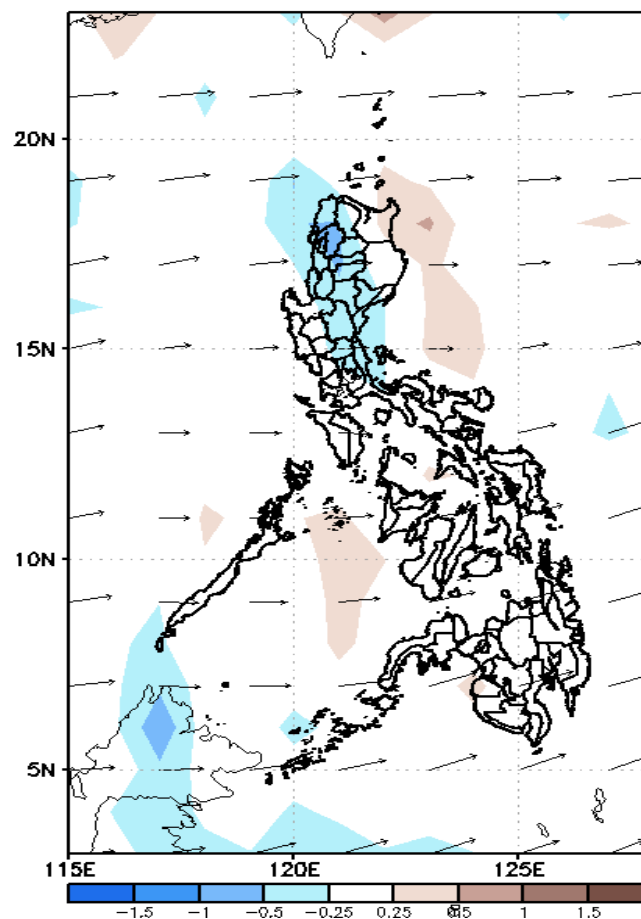
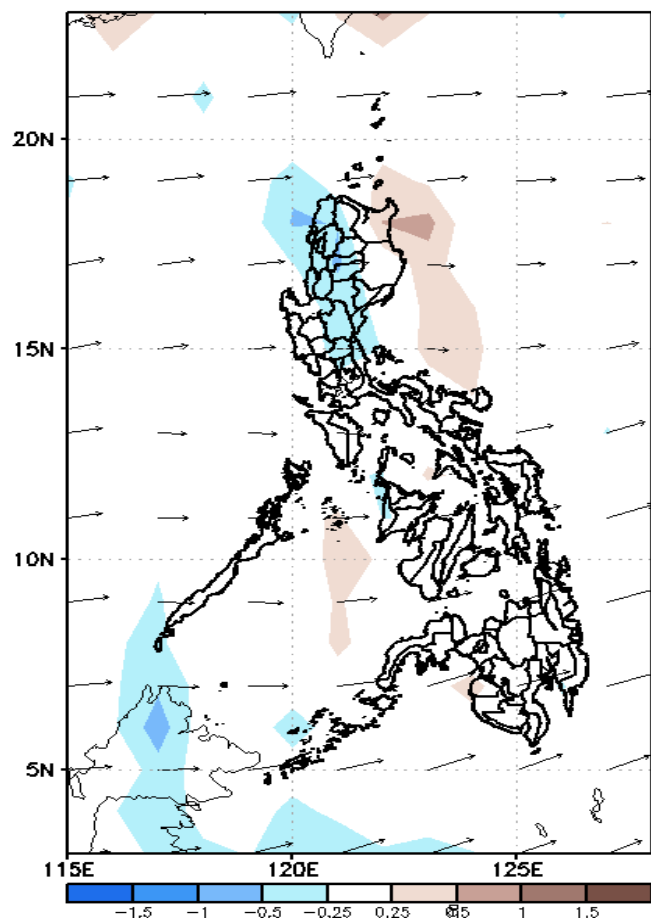


Low probability of rainfall to exceed 200mm in most parts of the country except in Eastern Samar and Surigao del Sur where there is 70-90% chance during the forecast period.

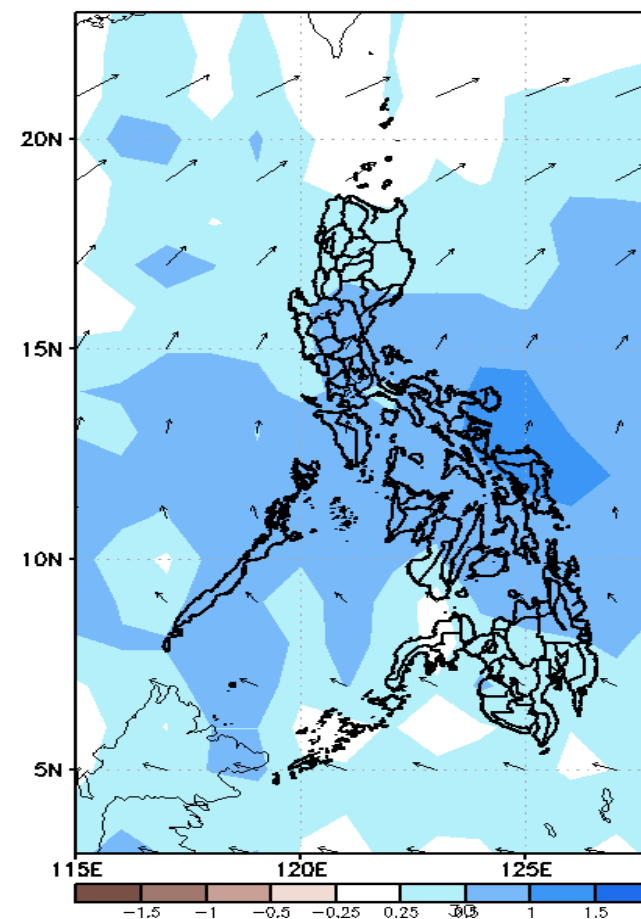
# GEFS Week-2 Forecasts: Wind Anomaly Forecast

Week 2: Jan 10-16, 2023

GEFS Week-2 850-hPa Divergence and Wind Anom  
Valid: 20230110 - 20230116



GEFS week-2 200-hPa Divergence and Wind Anom  
Valid: 20230110 - 20230116

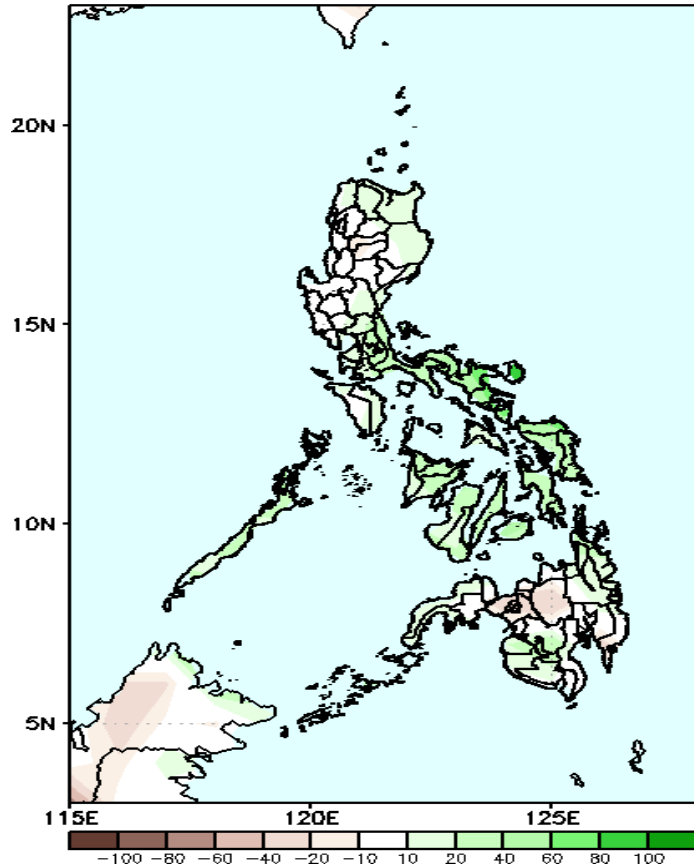


Northeast monsoon affecting Northern Luzon and Extreme-Northern Luzon. Easterlies affecting the rest of the country during the forecast period.

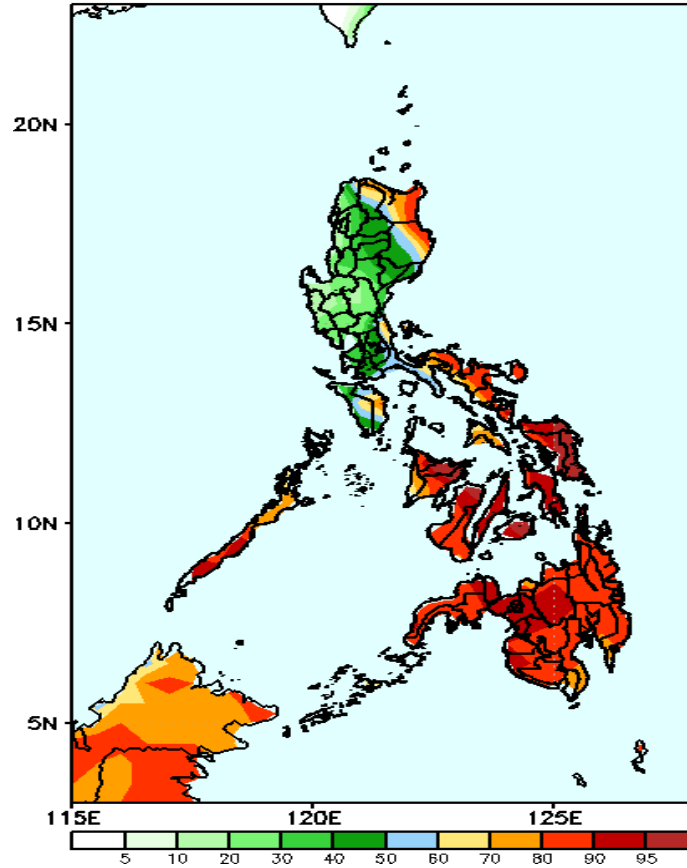
# Precipitation Anomaly and Exceedance Probability > 25/50 mm

## Week 2: Jan 10-16, 2023

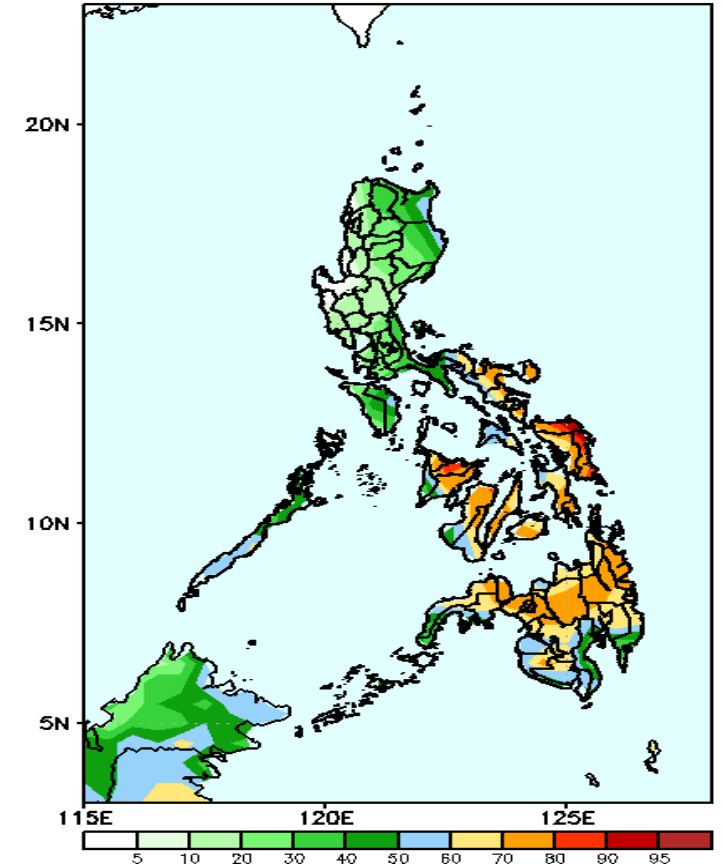
GEFS Week-2 Precip Anomaly  
Valid: 20230110 - 20230116



GEFS Week-2 Exceedance Prob. > 25mm  
Valid: 20230110 - 20230116



GEFS Week-2 Exceedance Prob. > 50mm  
Valid: 20230110 - 20230116



Increase of rainfall of 40-90mm is expected in most parts of southern Luzon and Visayas during the forecast period.

High probability of rainfall to exceed 25mm in Apayao, Cagayan, Isabela, Palawan, some areas in Mindoron and most parts of Bicol Region, Visayas and Mindanao while less likely for the rest of Luzon during the forecast period.

60-95% probability of rainfall to exceed 50mm in most parts of Bicol region, Visayas and Mindanao while less likely for the rest of Luzon during the forecast period.

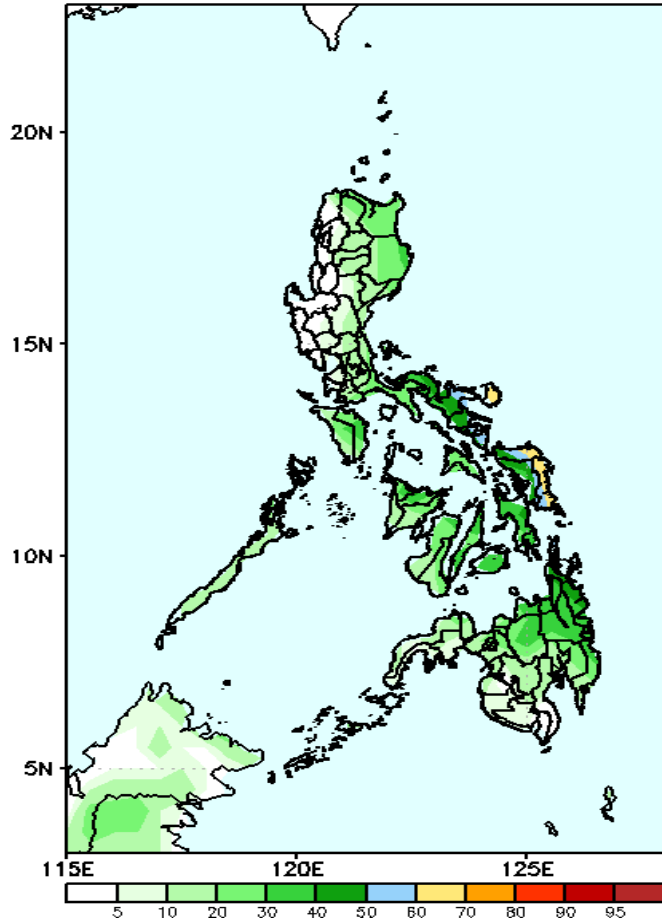




# Exceedance Probability > 100/150/200 mm

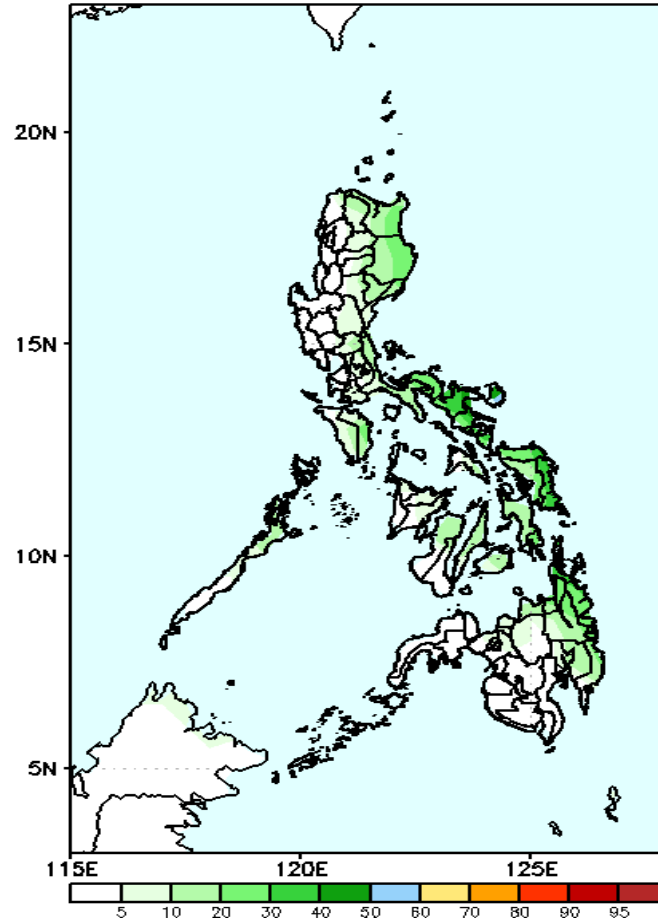
Week 2: Jan 10-16, 2023

GEFS Week-2 Exceedance Prob. > 100mm  
Valid: 20230110 - 20230116



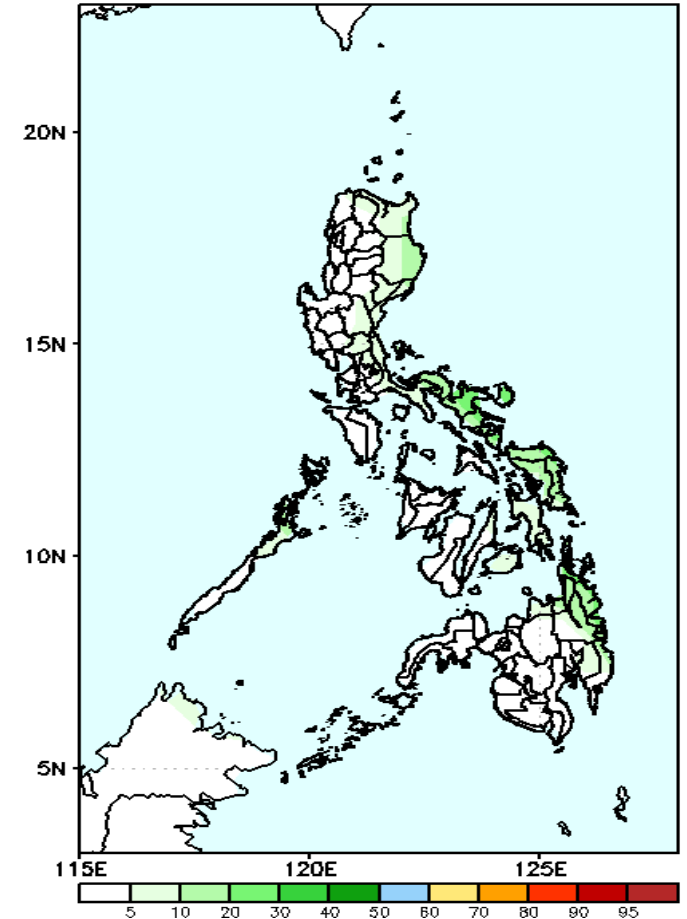
Low probability of rainfall to exceed 100mm in most parts of the country during the forecast period.

GEFS Week-2 Exceedance Prob. > 150mm  
Valid: 20230110 - 20230116



Low probability of rainfall to exceed 150mm in most parts of the country during the forecast period.

GEFS Week-2 Exceedance Prob. > 200mm  
Valid: 20230110 - 20230116



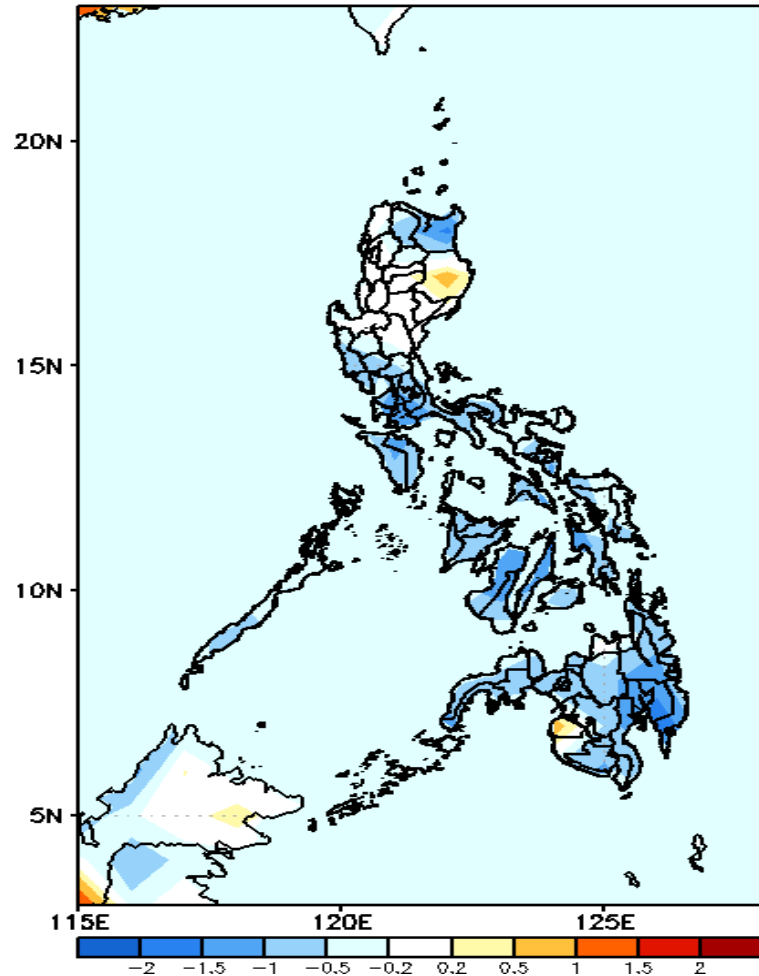
Low probability of rainfall to exceed 200mm in most parts of the country during the forecast period.

yong GASA



# GEFS Week-1 & 2 Forecasts: T2m Anomaly

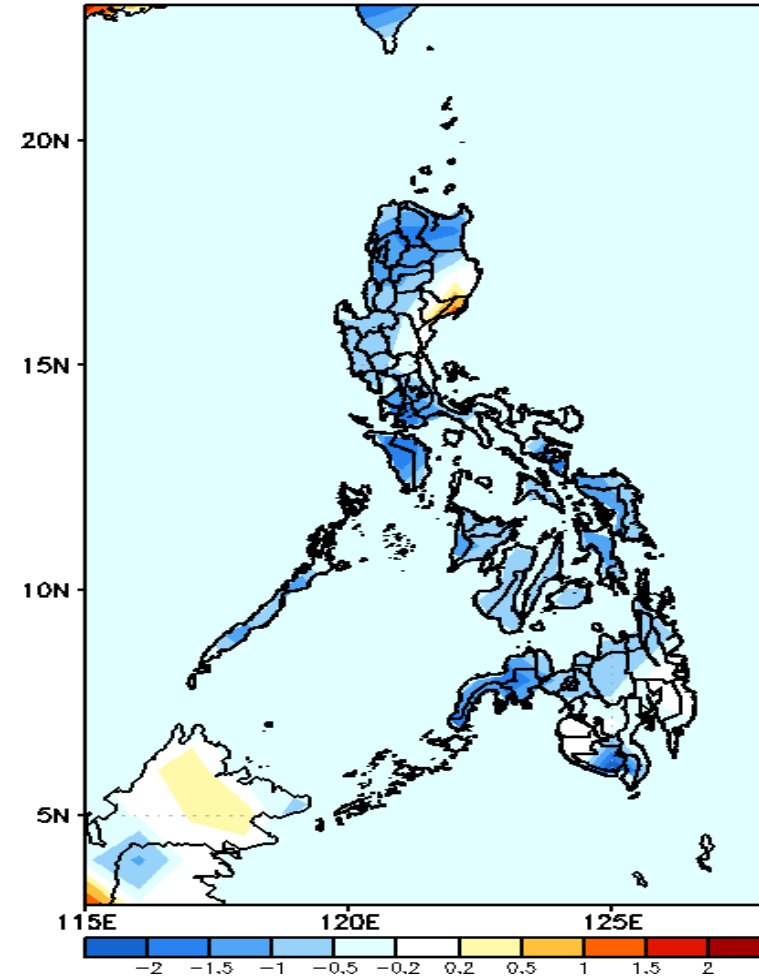
GEFS Week-1 T2m Anomaly  
Valid: 20230103 - 20230109



**2m Temperature Week 1: Jan 03-09, 2023**

Slightly cooler to cooler than average surface air temperature will likely experience in most parts of the country except in some areas in Ilocos & Cordillera Region, Cagayan Valley and Maguindanao where average to slightly warmer temperature is expected during the forecast period.

GEFS Week-2 T2m Anomaly  
Valid: 20230110 - 20230116



**2m Temperature Week 2: Jan 10-16, 2023**

Slightly cooler to cooler than average surface air temperature will likely experience in most parts of the country except in some areas in Cagayan Valley and southeastern Mindanao where average to slightly warmer temperature is expected during the forecast period.