



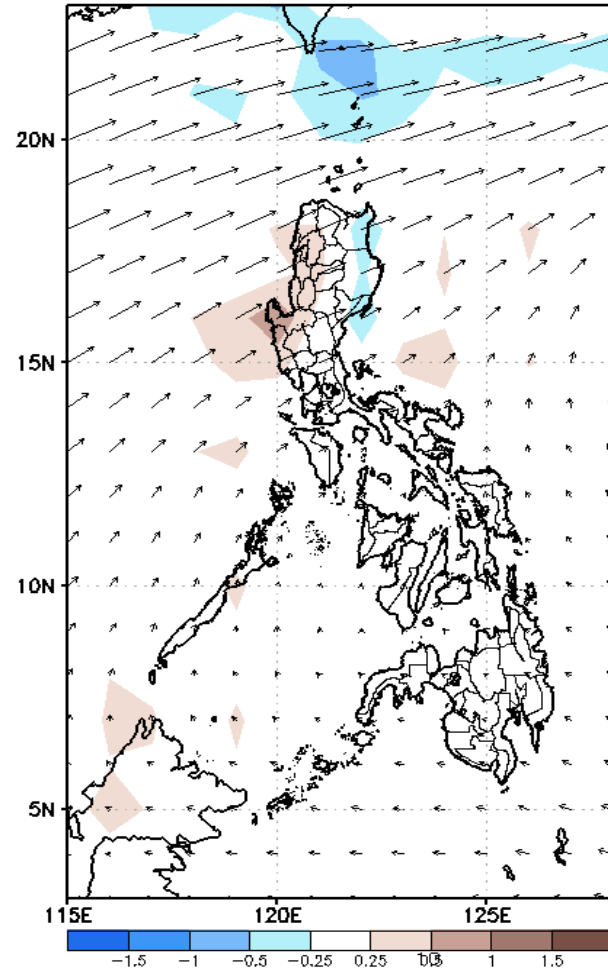
# Week 1 & Week 2 Forecast for the Philippines using GEFS Model



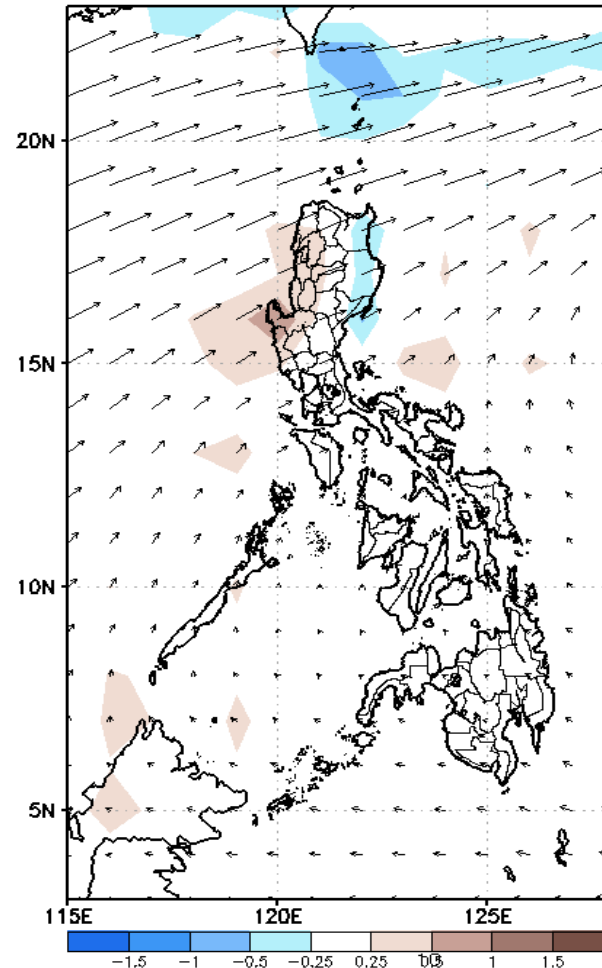
# GEFS Week-1 Forecasts: Wind Anomaly Forecast

Week 1: Jun 03-09, 2022

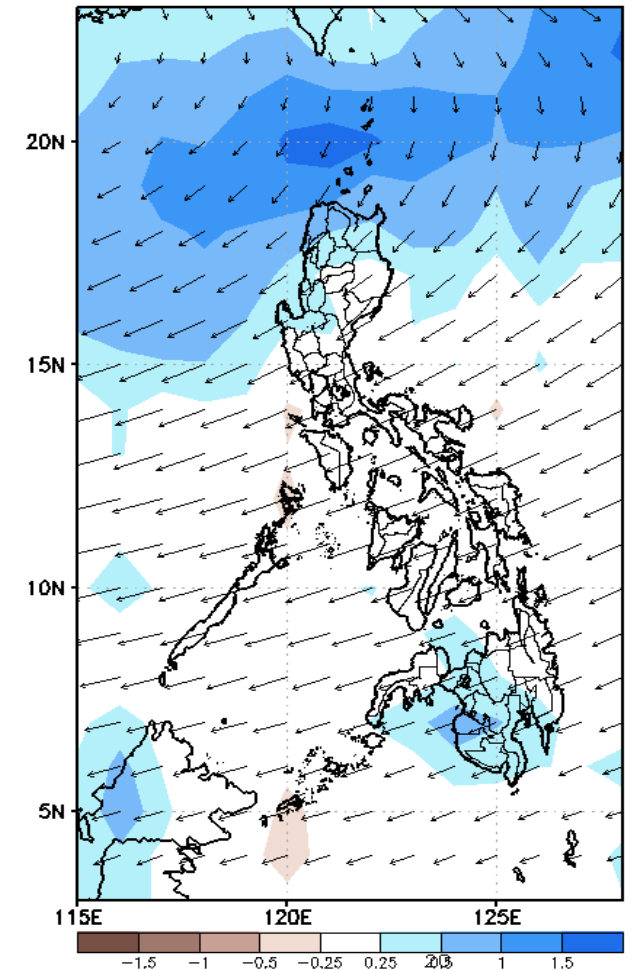
GEFS Week-1 850-hPa Divergence and Wind Anom:  
Valid: 20220603 - 20220609



GEFS Week-1 700-hPa Divergence and Wind Anom:  
Valid: 20220603 - 20220609



GEFS Week-1 200-hPa Divergence and Wind Anom:  
Valid: 20220603 - 20220609

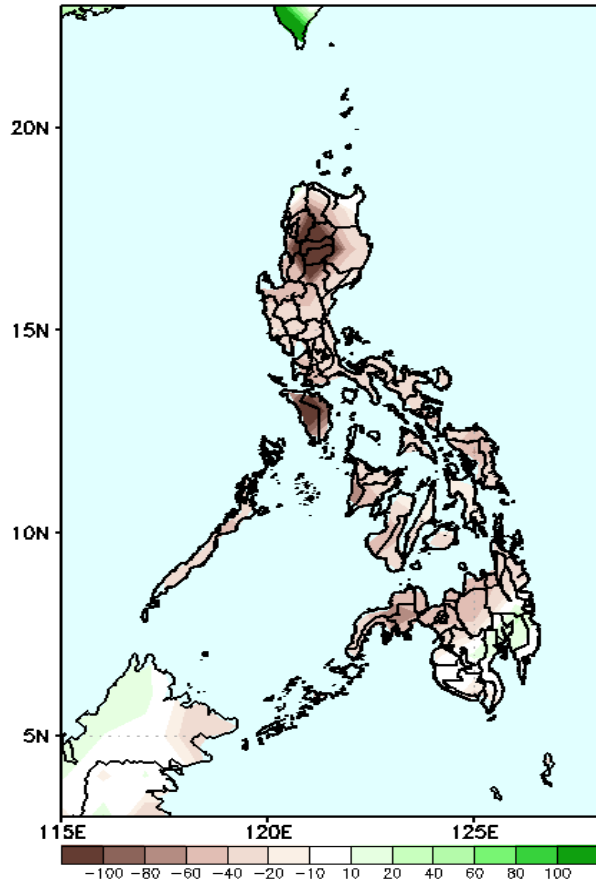


Southwest Monsoon is forecasted to affect most parts of Luzon while Easterlies affecting Visayas and Mindanao during the forecast period

# Precipitation Anomaly and Exceedance Probability > 25/50 mm

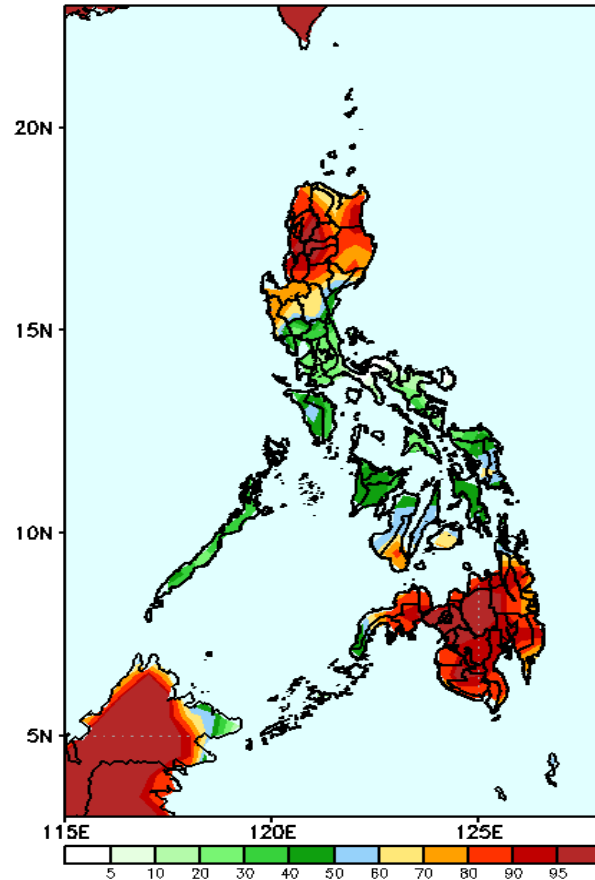
Week 1: Jun 03-09, 2022

GEFS Week-1 Precip Anomaly  
Valid: 20220603 - 20220609



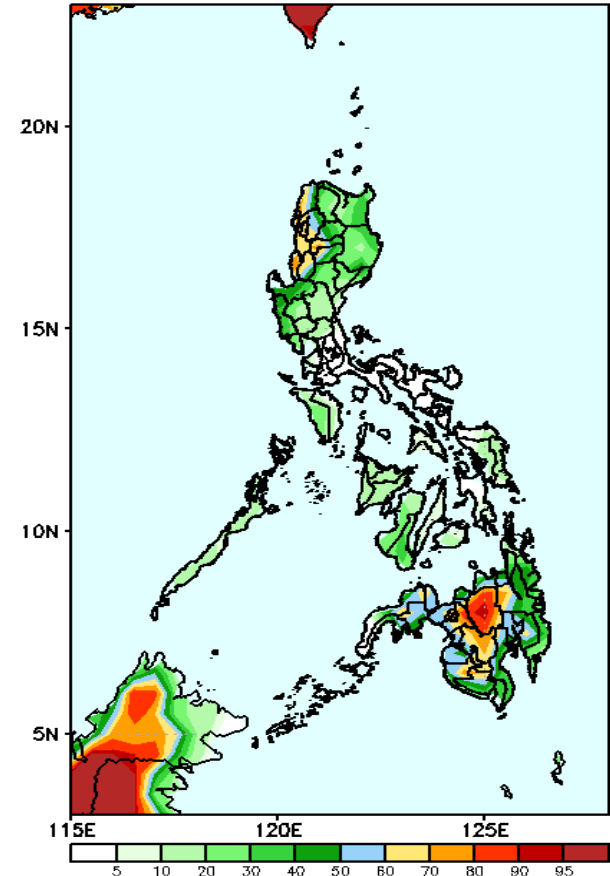
Rainfall deficit of more than 100mm is expected in Cordillera Region & Mindoro and 40-100mm for the rest of the country during the forecast period.

GEFS Week-1 Exceedance Prob. > 25mm  
Valid: 20220603 - 20220609



High probability of rainfall to exceed 25mm in most parts of Northern & Central Luzon, Negros Oriental and most parts of Mindanao while less likely for the rest the country during the forecast period.

GEFS Week-1 Exceedance Prob. > 50mm  
Valid: 20220603 - 20220609

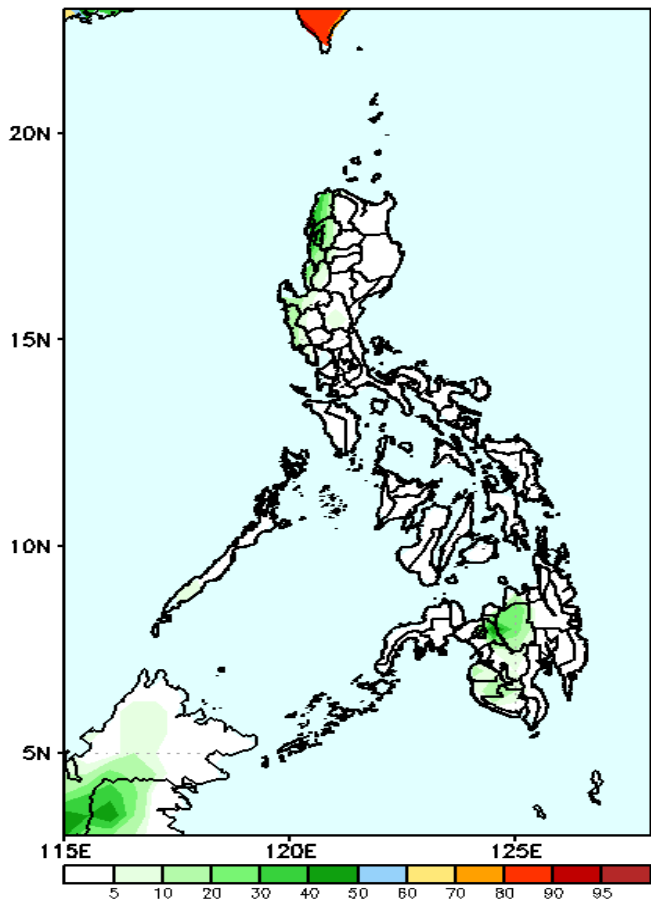


High probability of rainfall to exceed 50mm in Bukidnon, Lanao del Sur and South Cotabato while less likely for the rest the country during the forecast period.

# Exceedance Probability > 100/150/200 mm

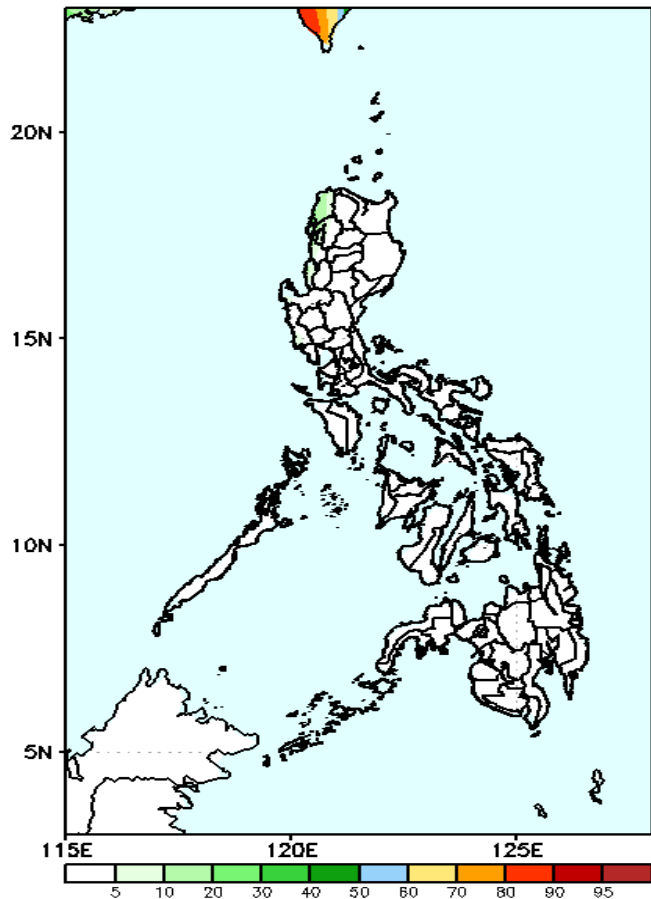
Week 1: Jun 03-09, 2022

GEFS Week-1 Exceedance Prob. > 100mm  
Valid: 20220603 – 20220609



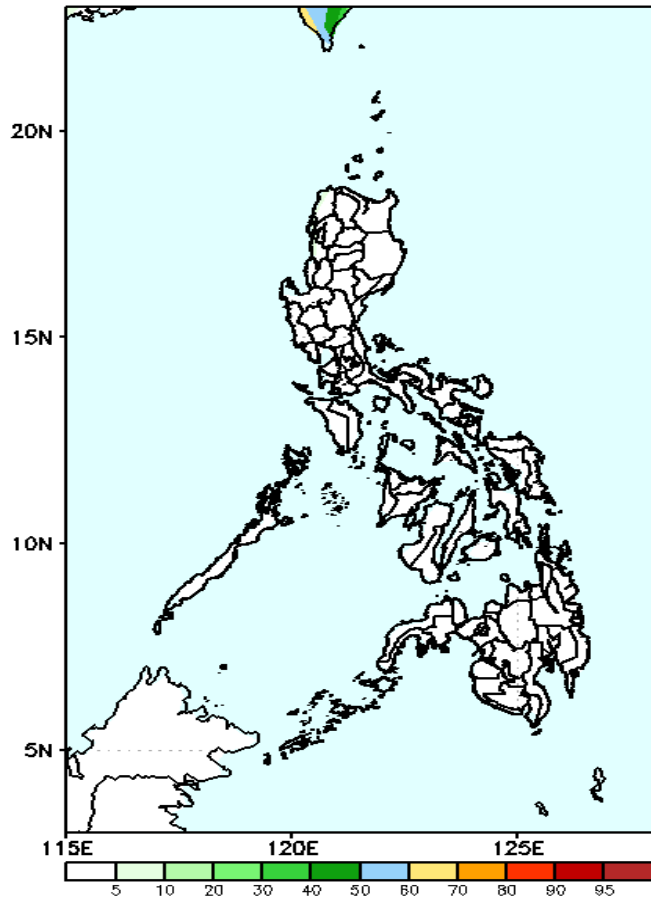
Low probability of rainfall to exceed 100mm in most parts of the country during the forecast period.

GEFS Week-1 Exceedance Prob. > 150mm  
Valid: 20220603 – 20220609



Low probability of rainfall to exceed 150mm in most parts of the country during the forecast period.

GEFS Week-1 Exceedance Prob. > 200mm  
Valid: 20220603 – 20220609

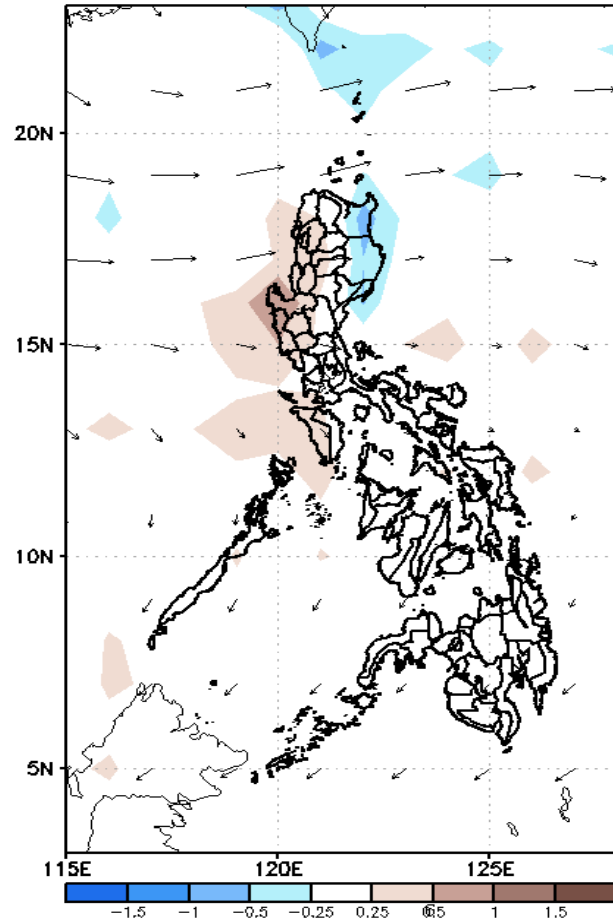


Low probability of rainfall to exceed 200mm in most parts of the country during the forecast period.

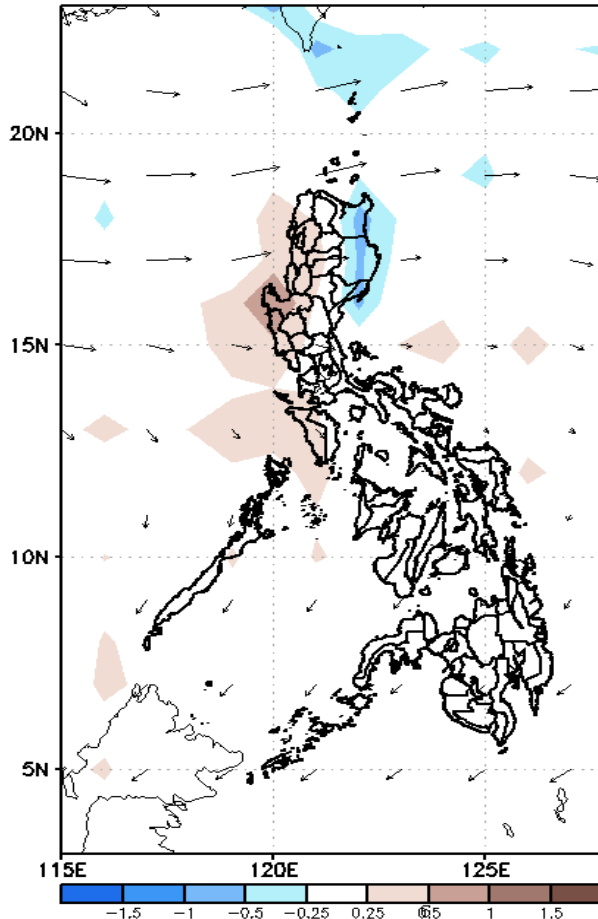
# GEFS Week-2 Forecasts: Wind Anomaly Forecast

**Week 2: Jun 10-16, 2022**

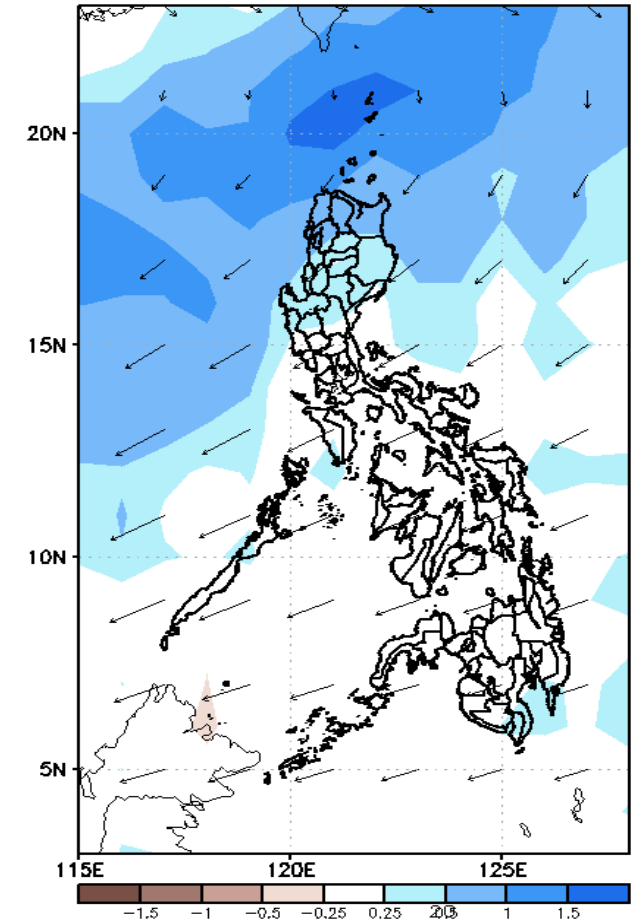
GEFS Week-2 850-hPa Divergence and Wind Anomaly  
Valid: 20220610 - 20220616



GEFS Week-2 700-hPa Divergence and Wind Anomaly  
Valid: 20220610 - 20220616



GEFS week-2 200-hPa Divergence and Wind Anomaly  
Valid: 20220610 - 20220616

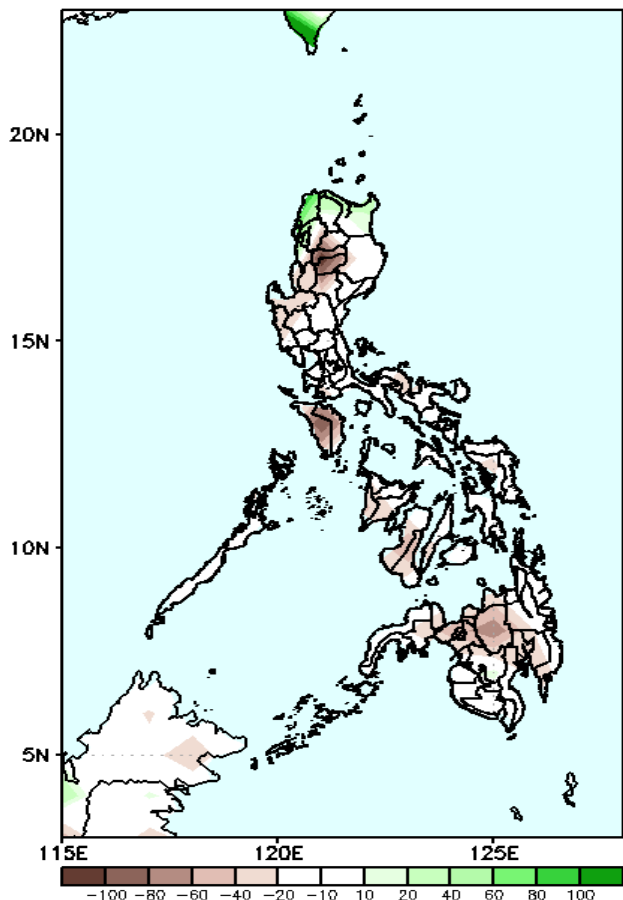


Southwest Monsoon is forecasted to affect most parts of Northern and Central Luzon while Easterlies affecting the rest of the country during the forecast period.

# Precipitation Anomaly and Exceedance Probability > 25/50 mm

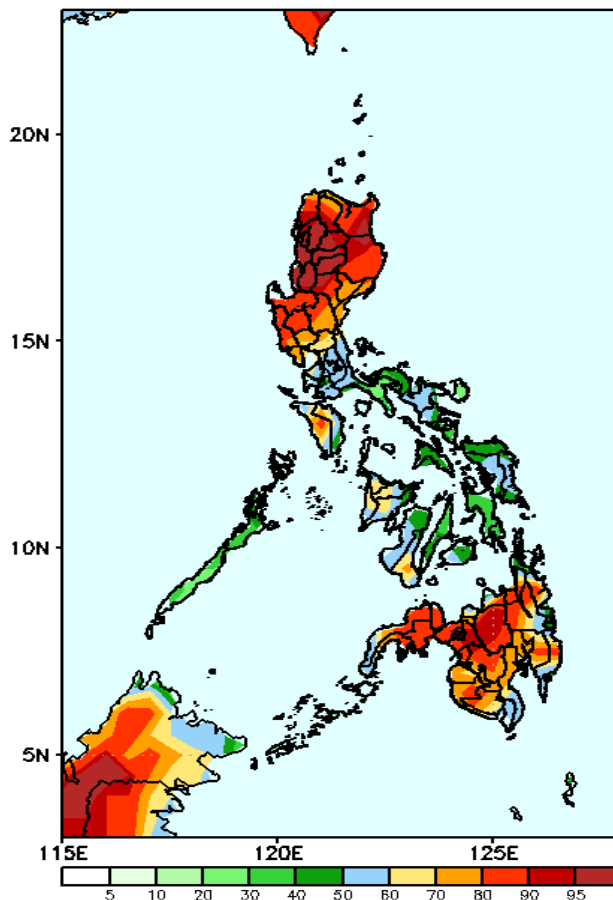
Week 2: Jun 10-16, 2022

GEFS Week-2 Precip Anomaly  
Valid: 20220610 - 20220616



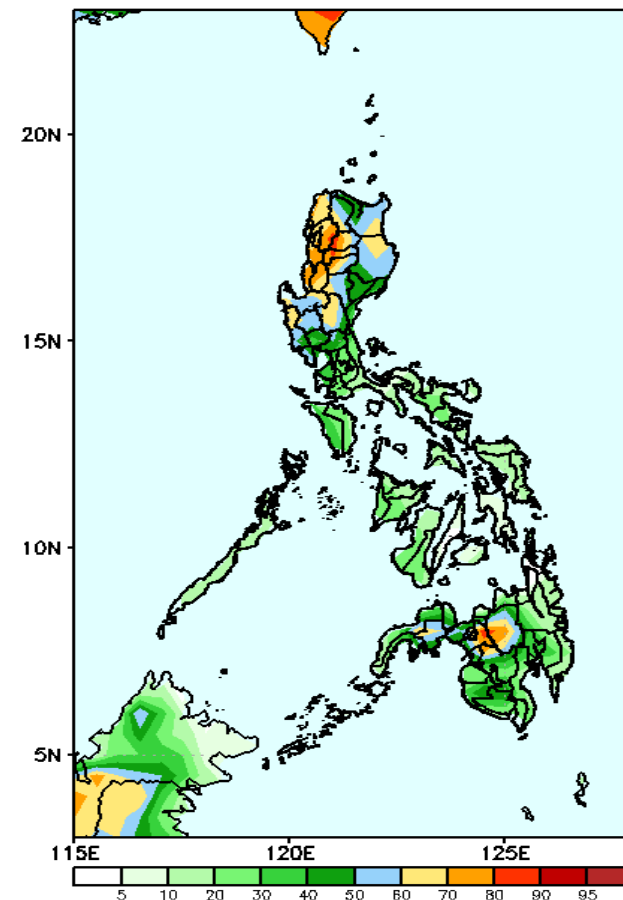
Rainfall deficit of 40-100mm is expected in most parts of the country during the forecast period.

GEFS Week-2 Exceedance Prob. > 25mm  
Valid: 20220610 - 20220616



High probability of rainfall to exceed 25mm in most parts of Luzon and Mindanao while less chance in Visayas during the forecast period.

GEFS Week-2 Exceedance Prob. > 50mm  
Valid: 20220610 - 20220616



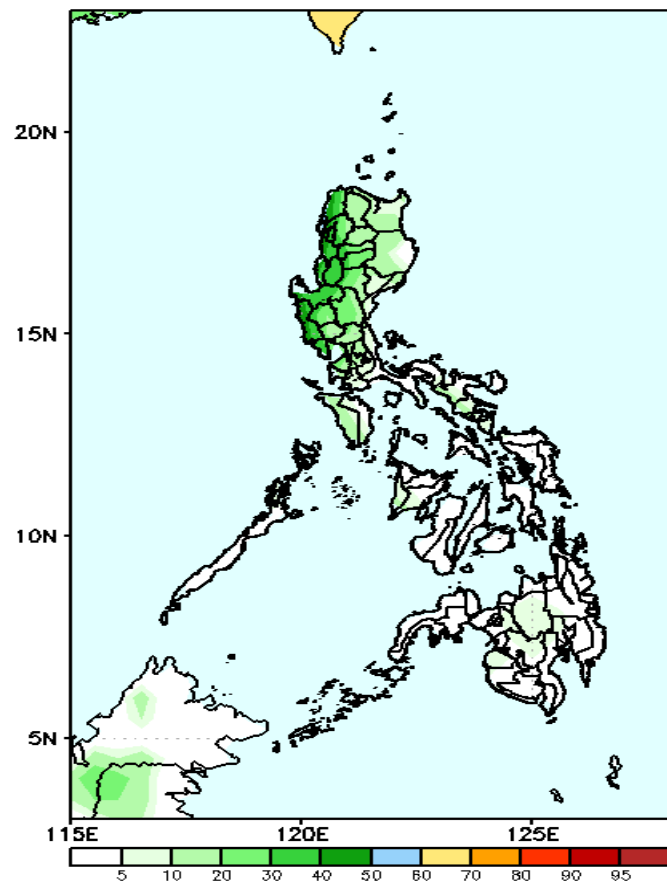
70-90% probability of rainfall to exceed 50mm in most parts of Ilocos & Cordillera Region, Bukidnon and Lanao del Sur while less likely for the rest of the country during the forecast period.



# Exceedance Probability > 100/150/200 mm

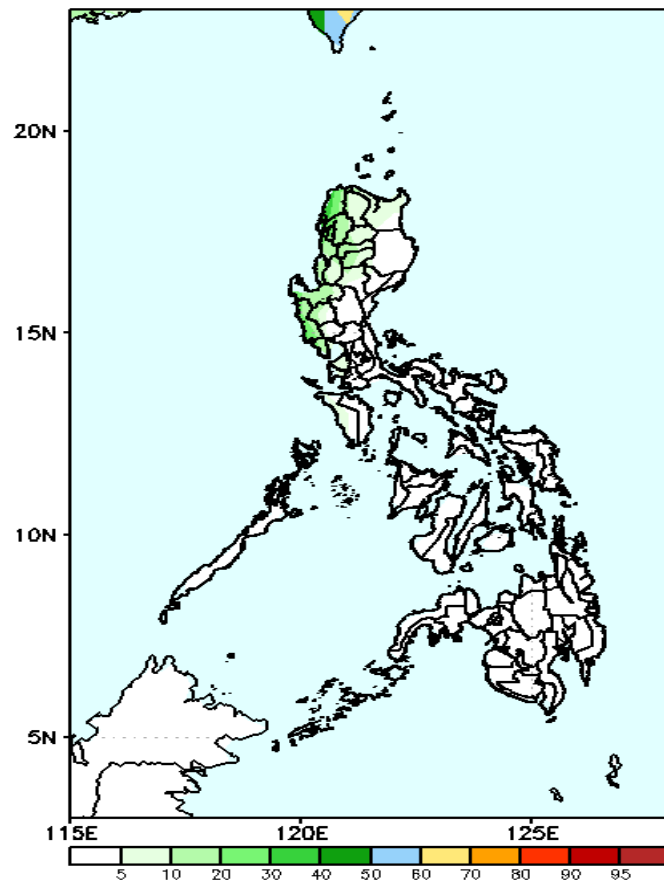
Week 2: Jun 10-16, 2022

GEFS Week-2 Exceedance Prob. > 100mm  
Valid: 20220610 – 20220616



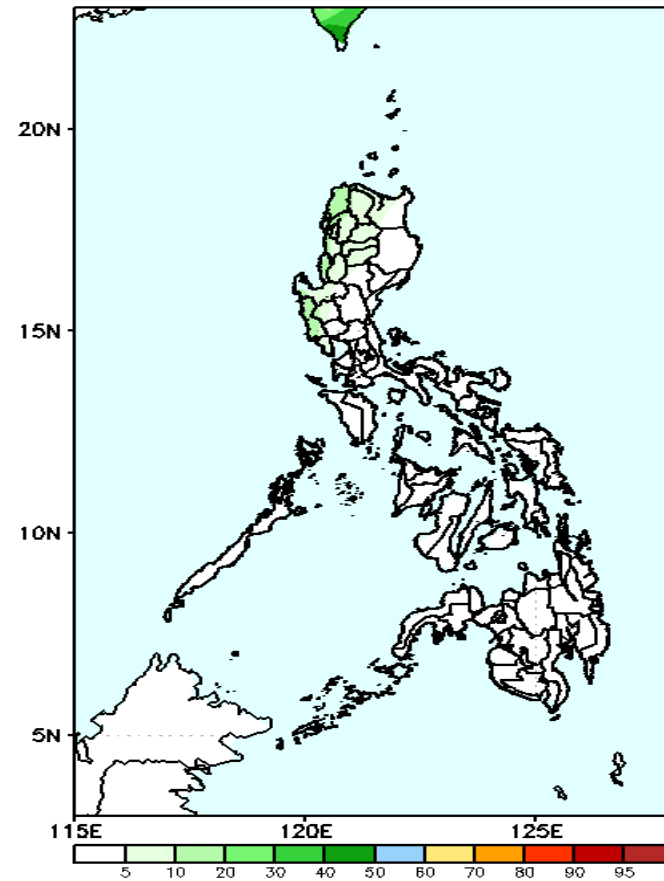
Low probability of rainfall to exceed 100mm in most parts of the country during the forecast period.

GEFS Week-2 Exceedance Prob. > 150mm  
Valid: 20220610 – 20220616



Low probability of rainfall to exceed 150mm in most parts of the country during the forecast period.

GEFS Week-2 Exceedance Prob. > 200mm  
Valid: 20220610 – 20220616

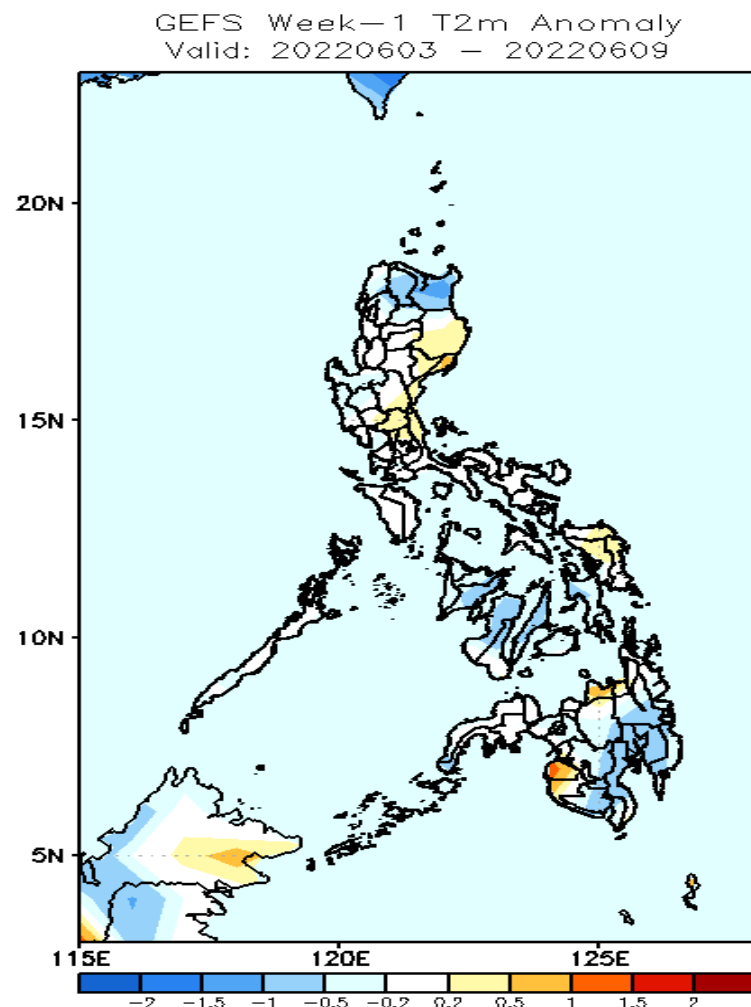


Low probability of rainfall to exceed 200mm in most parts of the country during the forecast period.

19  
SA

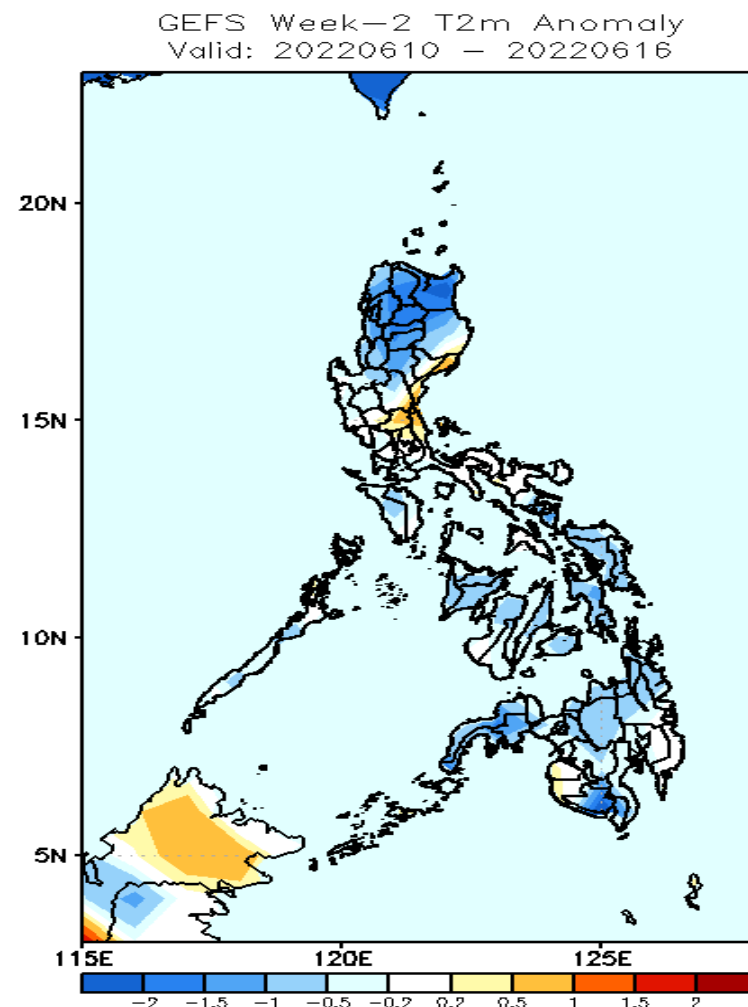


# GEFS Week-1 & 2 Forecasts: T2m Anomaly



## 2m Temperature Week 1: Jun 03-09, 2022

Slightly cooler surface air temperature will likely experience in Apayao, Cagayan, Cebu and in most parts of western Visayas and Southern Mindanao while average to slightly warmer is expected for the rest of the country during the forecast period.



## 2m Temperature Week 2: Jun 10-16, 2022

Cooler than average surface air temperature will likely experience in most parts of Northern Luzon, Zamboanga Peninsula and South Cotabato while average to slightly cooler for the rest of the country during the forecast period.