



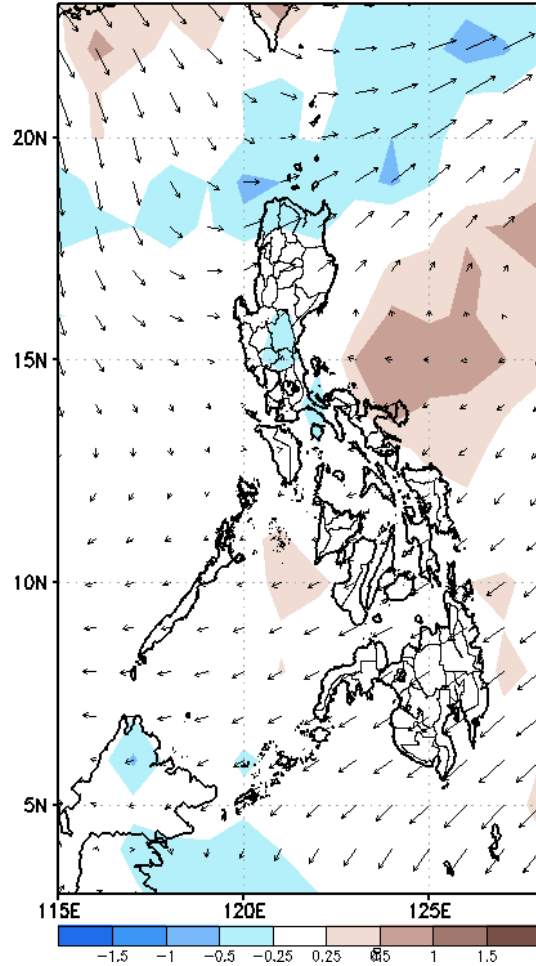
Week 1 & Week 2 Forecast for the Philippines using GEFS Model



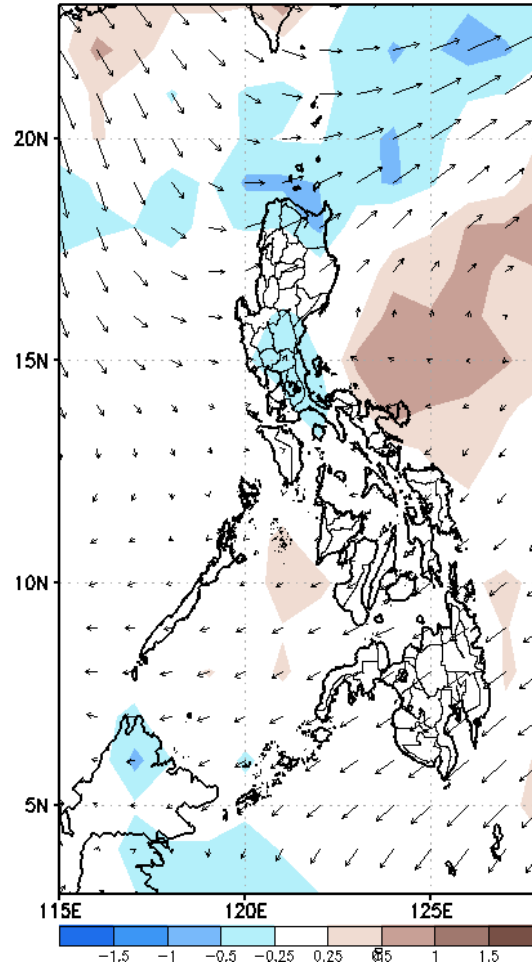
GEFS Week-1 Forecasts: Wind Anomaly Forecast

Week 1: Mar 03 – Mar 09, 2023

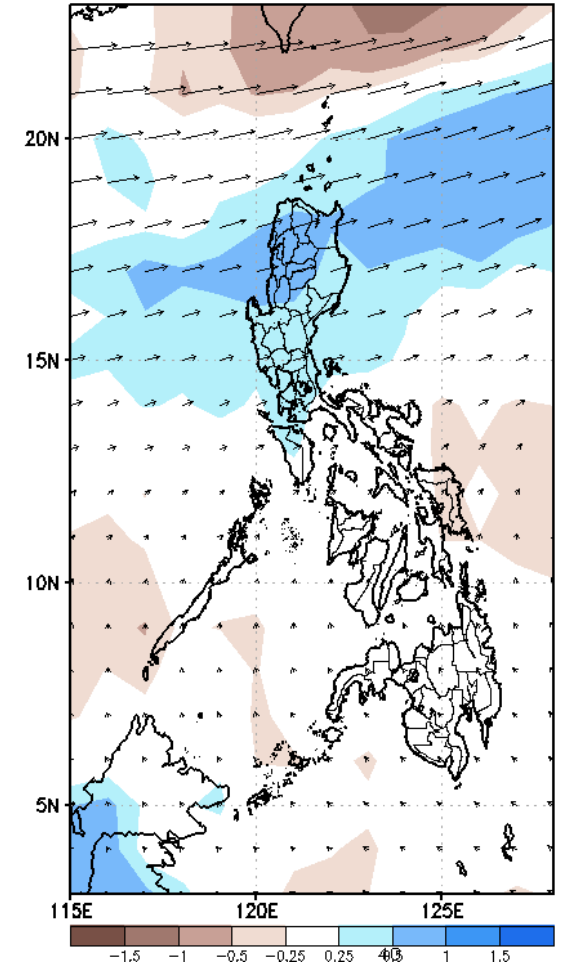
GEFS Week-1 850-hPa Divergence and Wind Anomaly
Valid: 20230303 – 20230309



GEFS Week-1 700-hPa Divergence and Wind Anomaly
Valid: 20230303 – 20230309



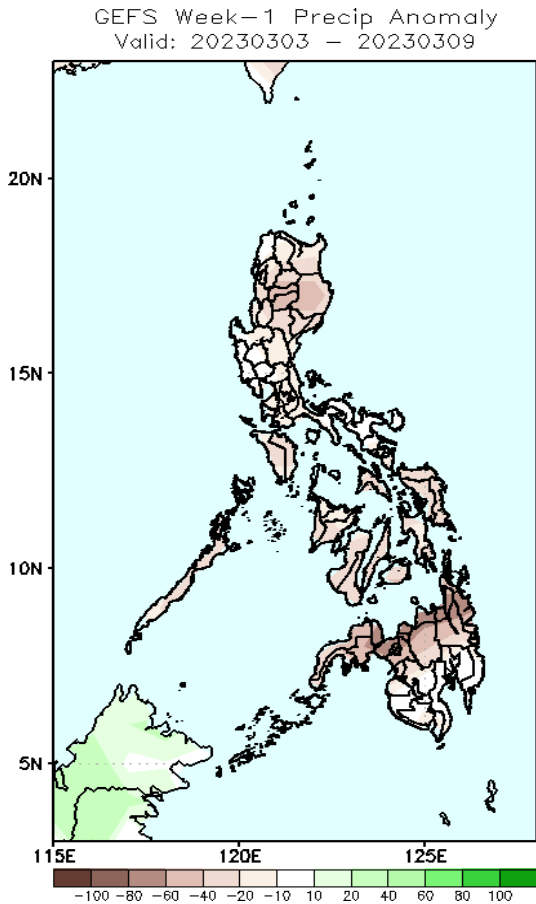
GEFS Week-1 200-hPa Divergence and Wind Anomaly
Valid: 20230303 – 20230309



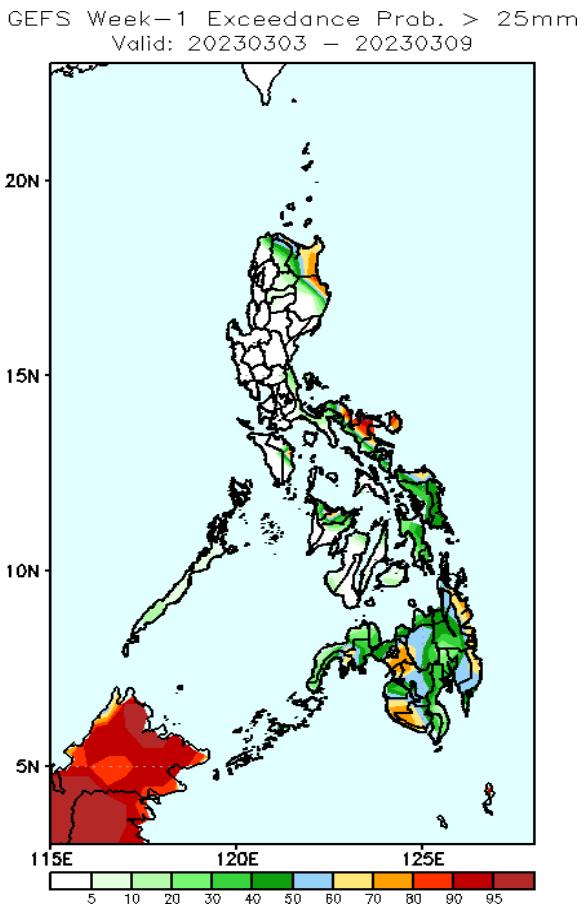
Weak northeast monsoon is forecasted to affect the eastern section of Luzon while easterlies affecting the rest of the country during the forecast period.

Precipitation Anomaly and Exceedance Probability > 25/50 mm

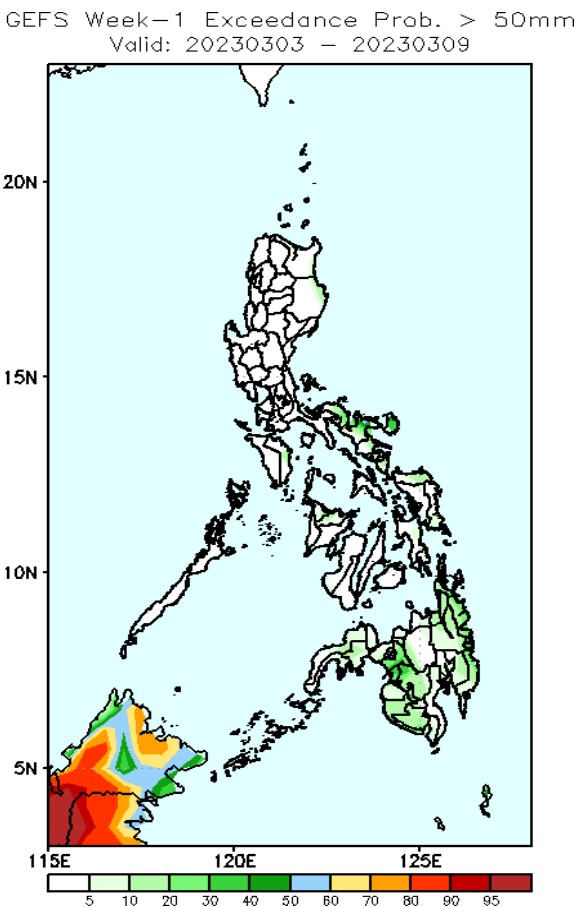
Week 1: Mar 03 – Mar 09, 2023



Rainfall deficit of 20-80mm is expected in most parts of the country during the forecast period.



Moderate to high probability of rainfall exceeding 25mm over Aparri, Cagayan, Northern parts of Isabela, the eastern section of Bicol region, Samar provinces, and most parts of Mindanao while low chance over the rest of the country.

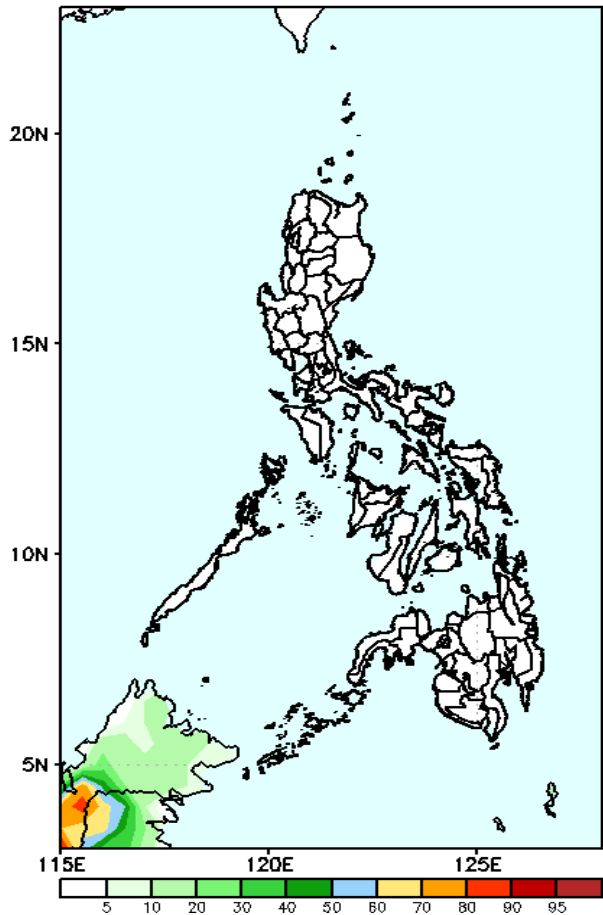


Low probability of rainfall exceeding 50mm across the country.

Exceedance Probability > 100/150/200 mm

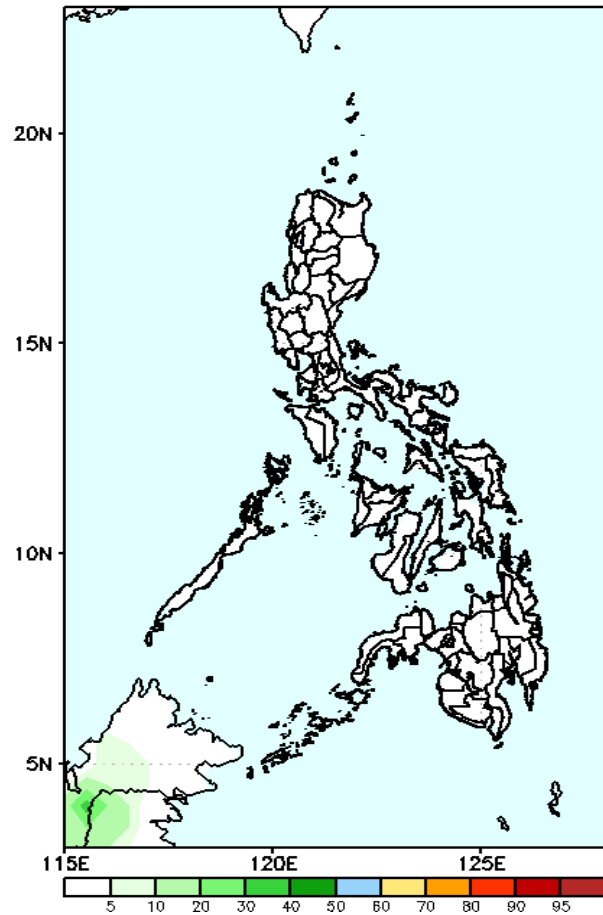
Week 1: Mar 03 – Mar 09, 2023

GEFS Week-1 Exceedance Prob. > 100mm
Valid: 20230303 – 20230309



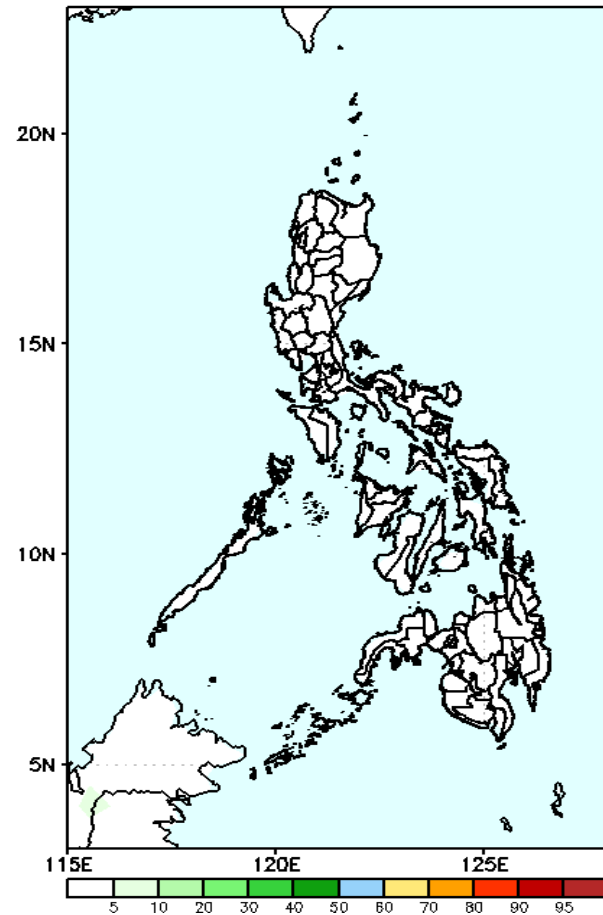
Low probability of rainfall to exceed 100mm in most parts of the country during the forecast period.

GEFS Week-1 Exceedance Prob. > 150mm
Valid: 20230303 – 20230309



Low probability of rainfall to exceed 150mm in most parts of the country during the forecast period.

GEFS Week-1 Exceedance Prob. > 200mm
Valid: 20230303 – 20230309

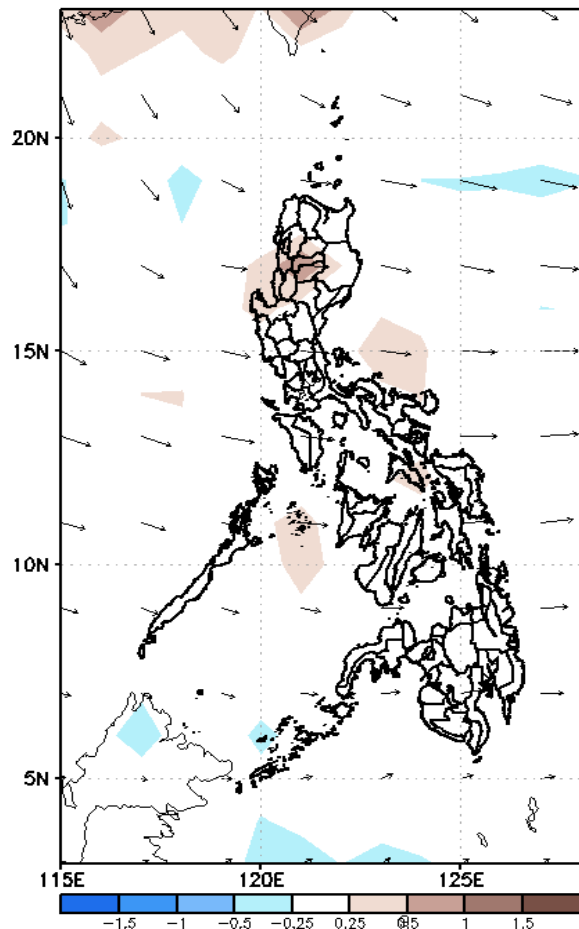


Low probability of rainfall to exceed 200mm in most parts of the country during the forecast period.

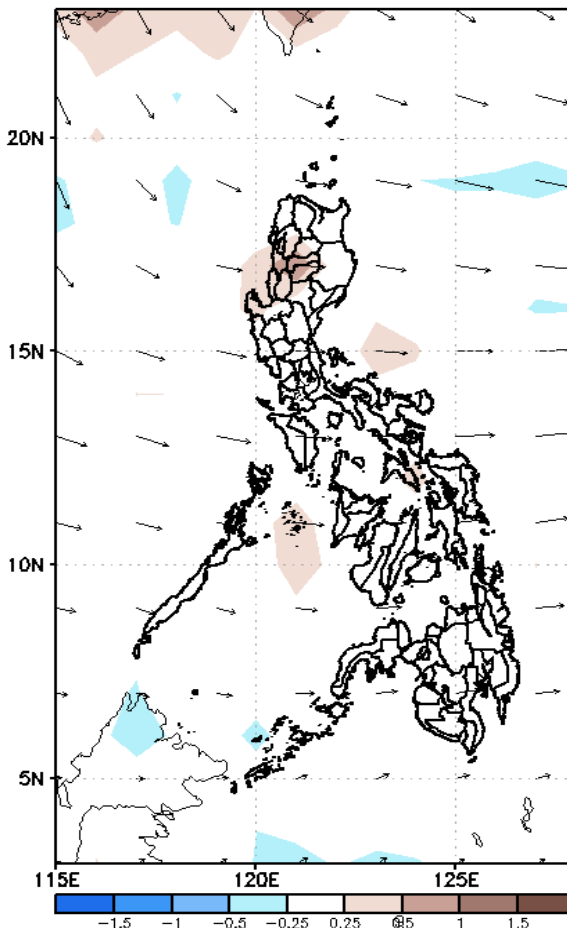
GEFS Week-2 Forecasts: Wind Anomaly Forecast

Week 2: Mar 10-16, 2023

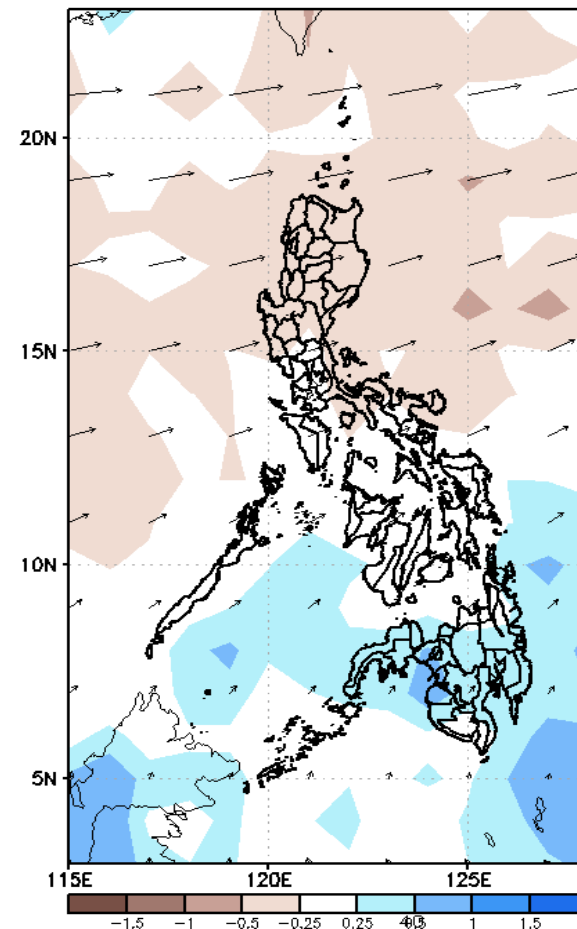
GEFS Week-2 850-hPa Divergence and Wind Anomaly
Valid: 20230310 - 20230316



GEFS Week-2 700-hPa Divergence and Wind Anomaly
Valid: 20230310 - 20230316



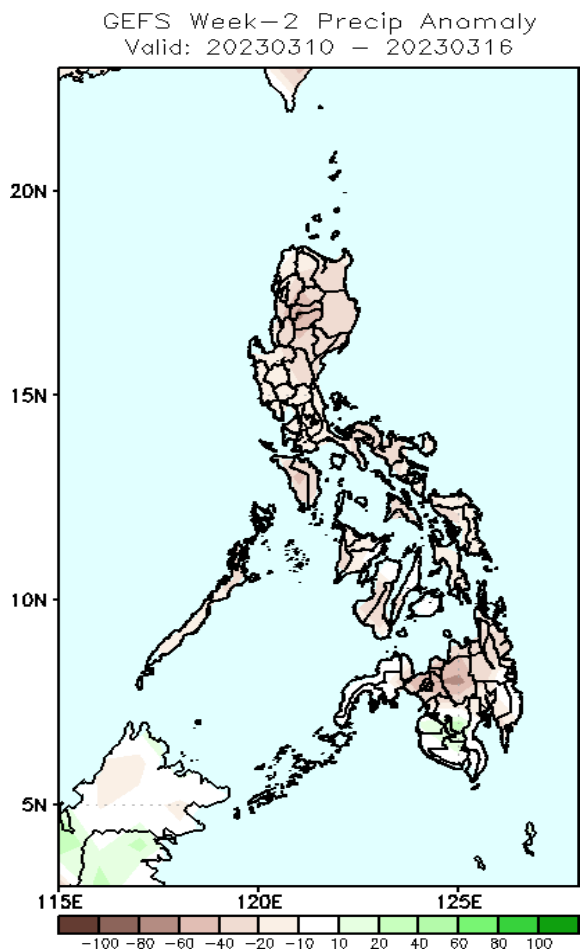
GEFS week-2 200-hPa Divergence and Wind Anomaly
Valid: 20230310 - 20230316



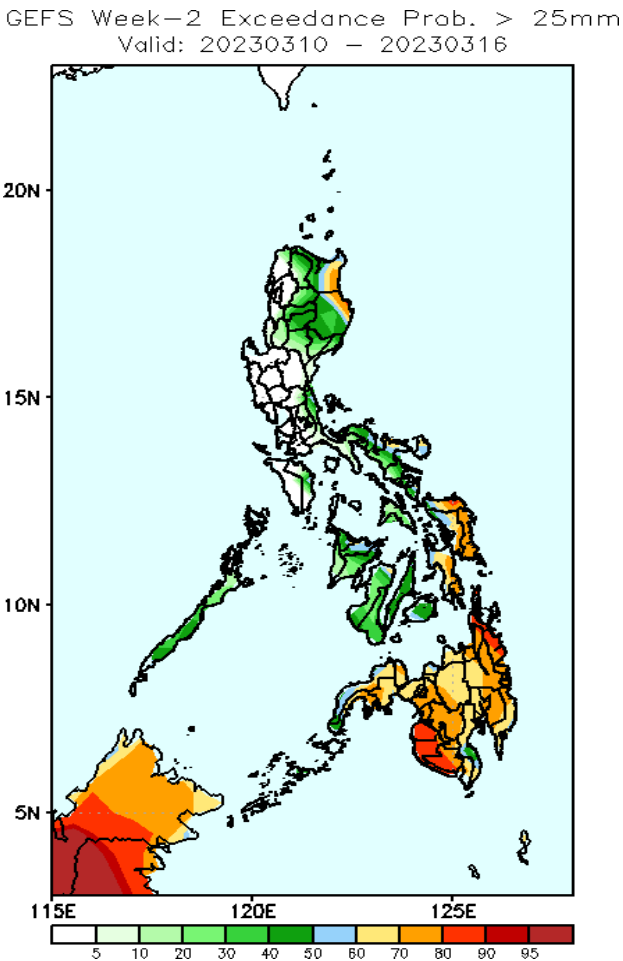
Easterlies is forecasted to affect most parts of the country during the forecast period.

Precipitation Anomaly and Exceedance Probability > 25/50 mm

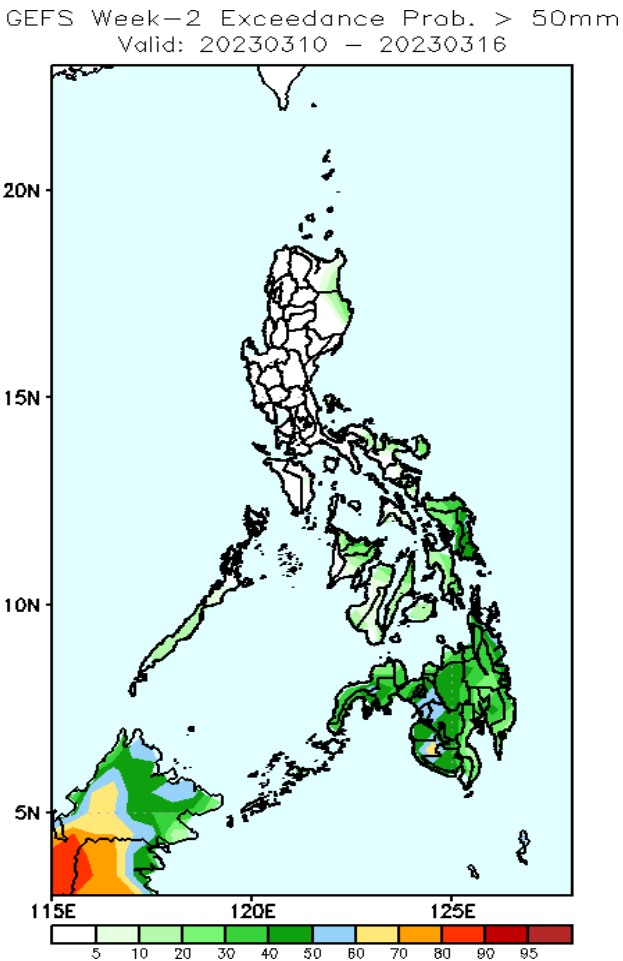
Week 2: Mar 10-16, 2023



Rainfall deficit of 20-60mm is expected in most parts of the country during the forecast period.



High to very high probability of rainfall exceeding 25mm in Mindanao, Eastern Visayas, and portions of Cagayan and Isabela while low to moderate chance over the rest of the country.



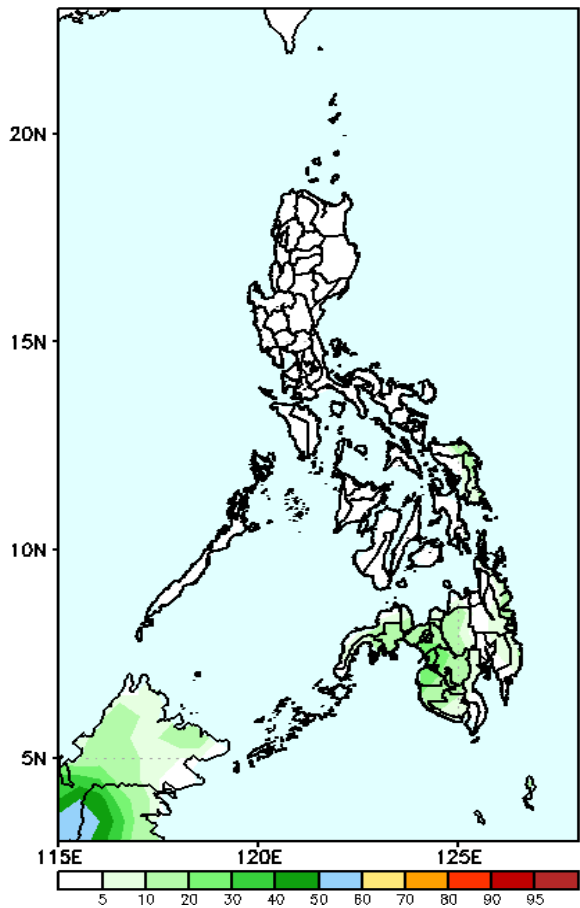
Moderate probability of rainfall exceeding 50mm in Mindanao and Eastern Visayas while low chance over the rest of the country.



Exceedance Probability > 100/150/200 mm

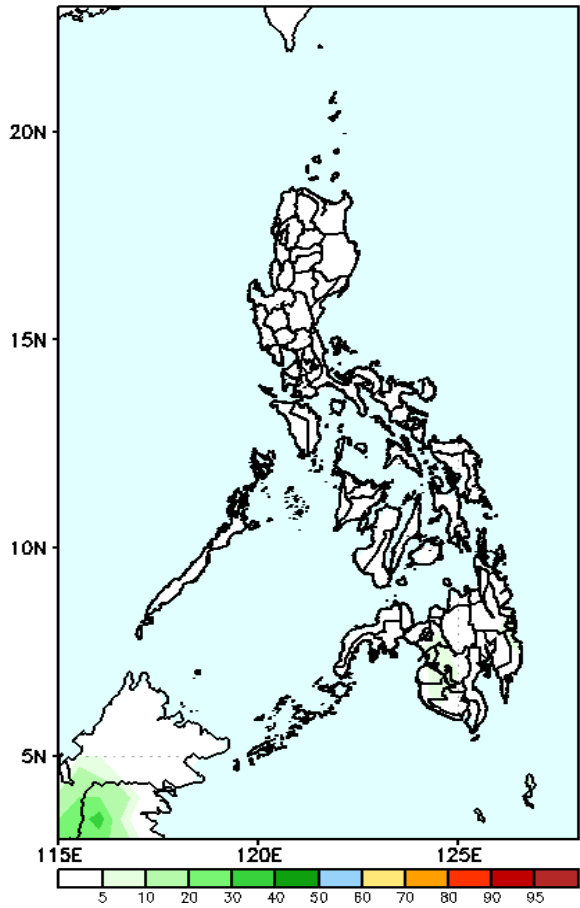
Week 2: Mar 10-16, 2023

GEFS Week-2 Exceedance Prob. > 100mm
Valid: 20230310 – 20230316



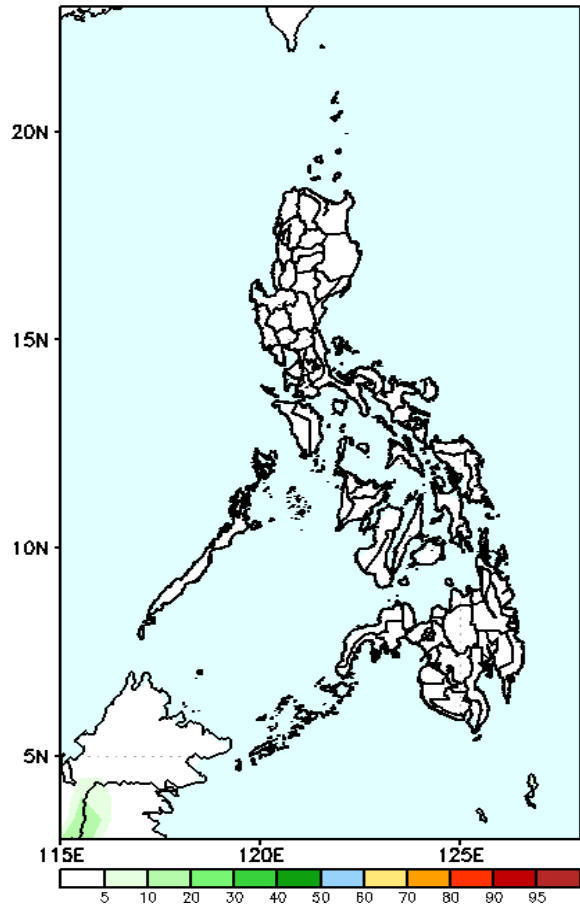
Low probability of rainfall to exceed 100mm in most parts of the country during the forecast period.

GEFS Week-2 Exceedance Prob. > 150mm
Valid: 20230310 – 20230316



Low probability of rainfall to exceed 150mm in most parts of the country during the forecast period.

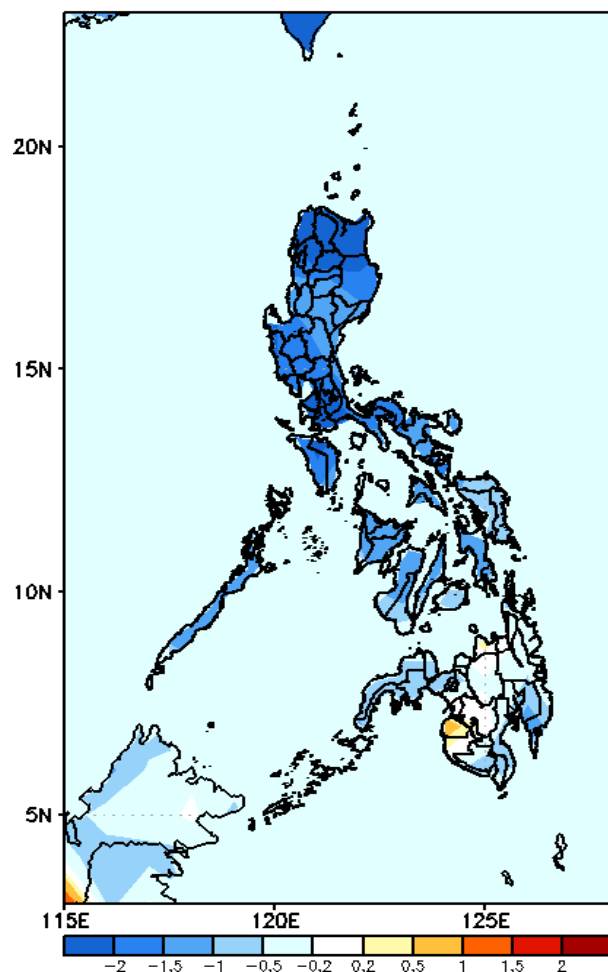
GEFS Week-2 Exceedance Prob. > 200mm
Valid: 20230310 – 20230316



Low probability of rainfall to exceed 200mm in most parts of the country during the forecast period.

GEFS Week-1 & 2 Forecasts: T2m Anomaly

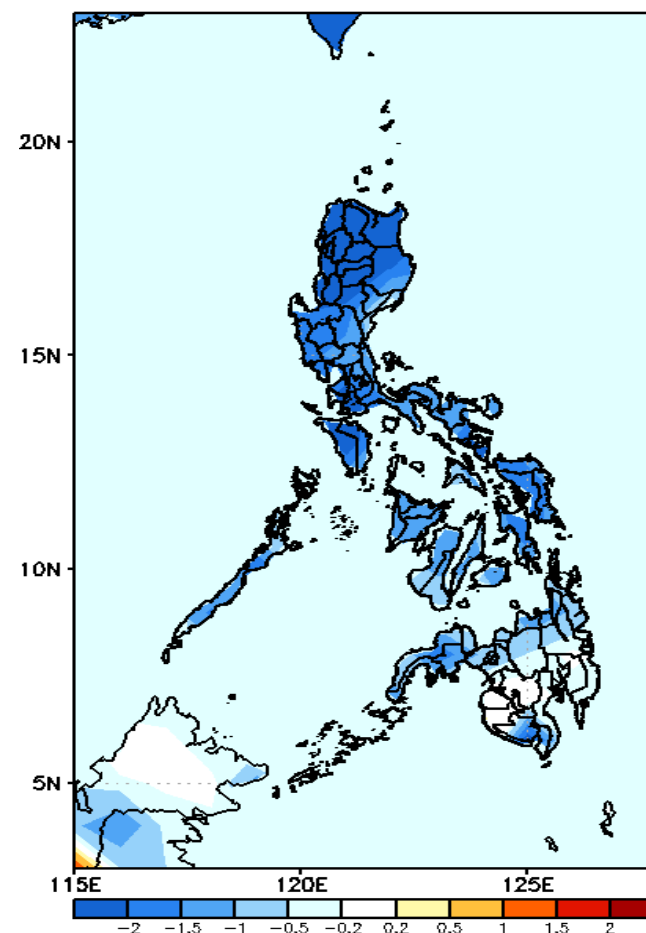
GEFS Week-1 T2m Anomaly
Valid: 20230303 - 20230309



2m Temperature Week 1: Mar 03-09, 2023

Cooler than average surface air temperature will likely experience in most parts of the country except Maguidanao where slightly warmer temperature is expected during the forecast period.

GEFS Week-2 T2m Anomaly
Valid: 20230310 - 20230316



2m Temperature Week 2: Mar 10-16, 2023

Cooler than average surface air temperature will likely experience in most parts of the country during the forecast period.