



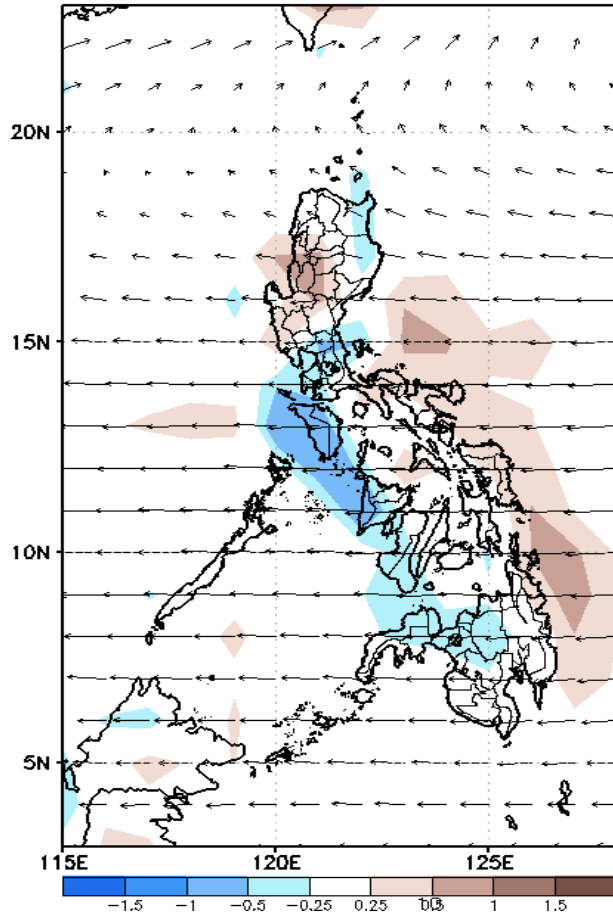
Week 1 & Week 2 Forecast for the Philippines using GEFS Model



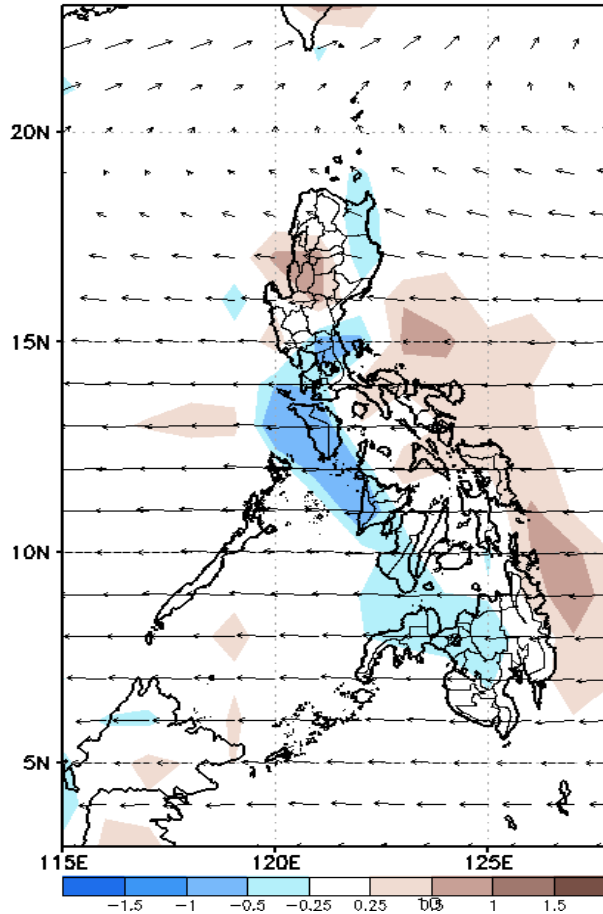
GEFS Week-1 Forecasts: Divergence & Wind Anomaly

Week 1: May 03-09, 2021

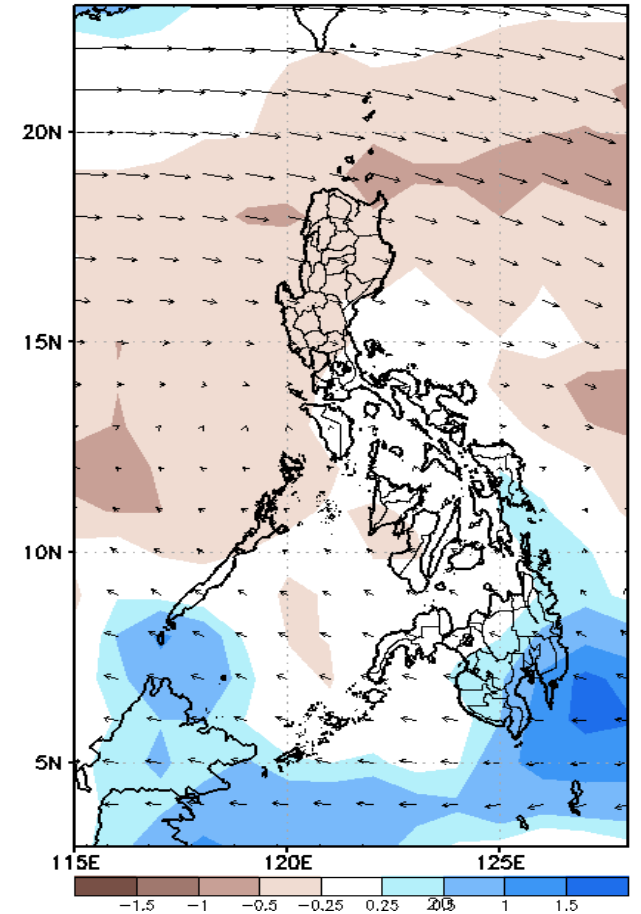
GEFS Week-1 850-hPa Divergence and Wind Anom
Valid: 20210503 - 20210509



GEFS Week-1 700-hPa Divergence and Wind Anom
Valid: 20210503 - 20210509



GEFS Week-1 200-hPa Divergence and Wind Anom
Valid: 20210503 - 20210509

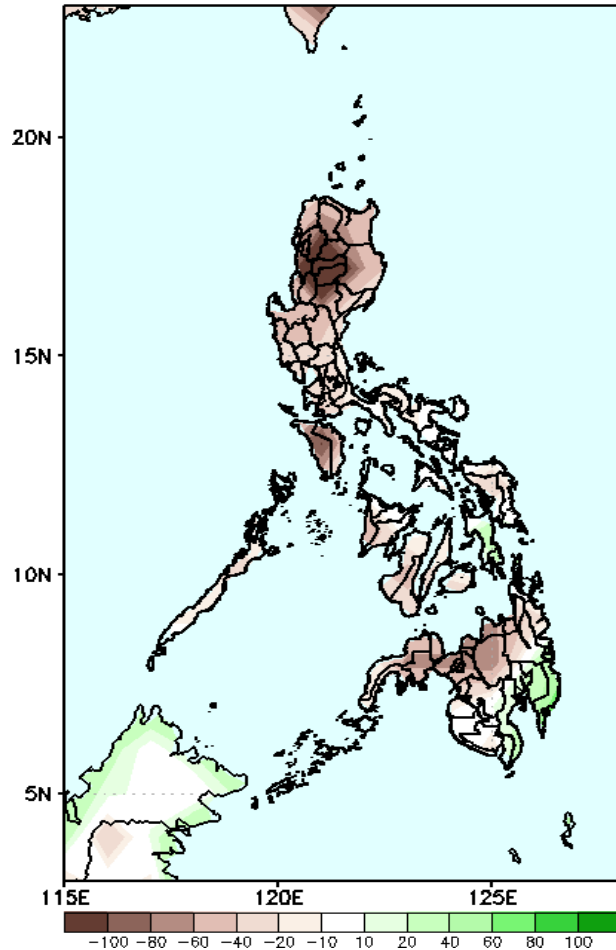


Upper and low level Divergence suggest likelihood of precipitation in parts of CALABARZON, Mindoro provinces. Western Visayas and most parts of Mindanao. Easterlies affecting most parts of the country attributing to hot and warm temperatures during the forecast period.

Precipitation Anomaly and Exceedance Probability > 25/50 mm

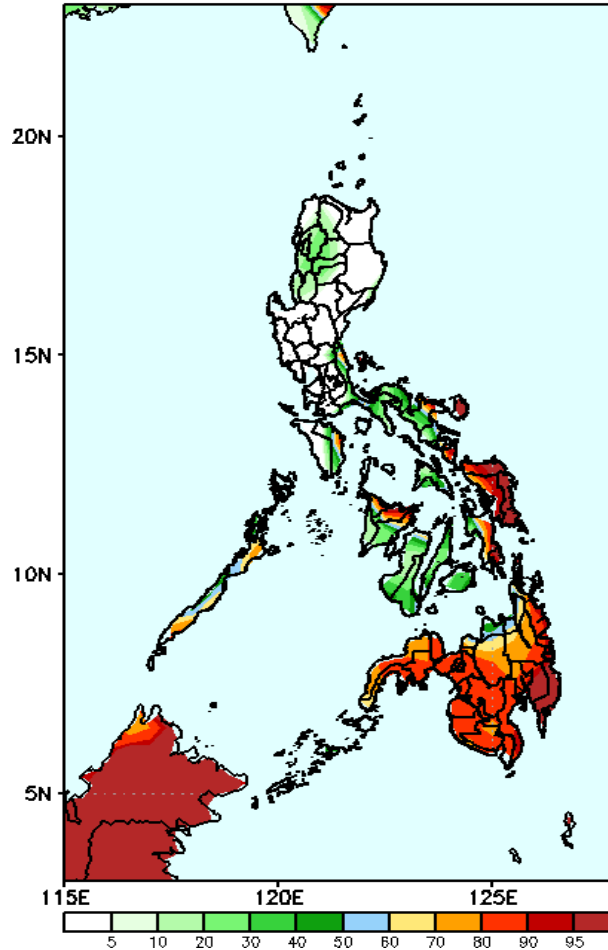
Week 1: May 03-09, 2021

GEFS Week-1 Precip Anomaly
Valid: 20210503 – 20210509



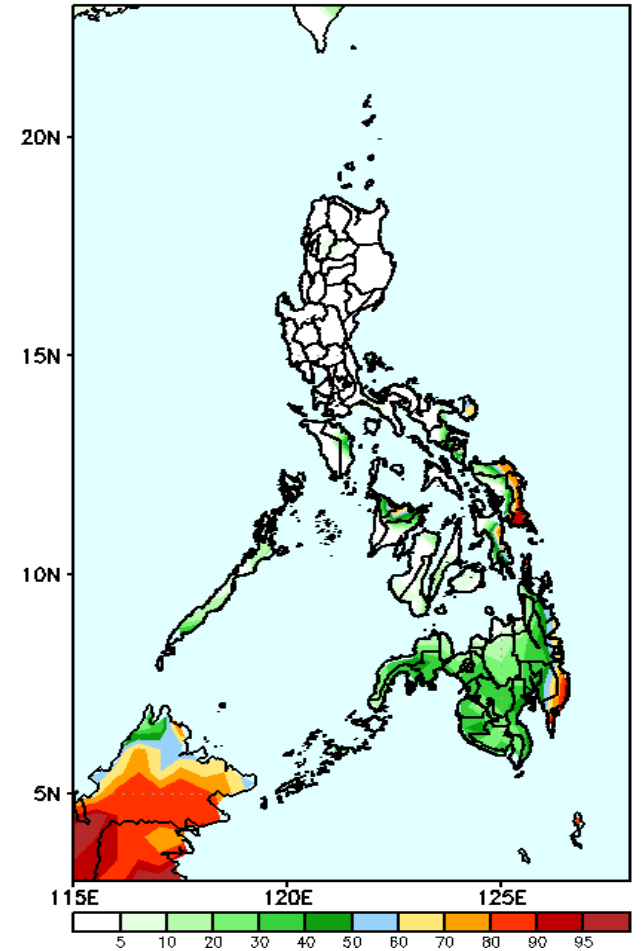
Rainfall deficit of up to 100mm is expected in most parts of the country (especially in Luzon) except in Davao Region where above normal rainfall is more likely during the forecast period.

GEFS Week-1 Exceedance Prob. > 25mm
Valid: 20210503 – 20210509



High probability of rainfall to exceed 25mm in Catanduanes, Sorsogon, Palawan, most of Eastern Visayas and most parts of Mindanao while less likely for the rest of the country during the forecast period.

GEFS Week-1 Exceedance Prob. > 50mm
Valid: 20210503 – 20210509

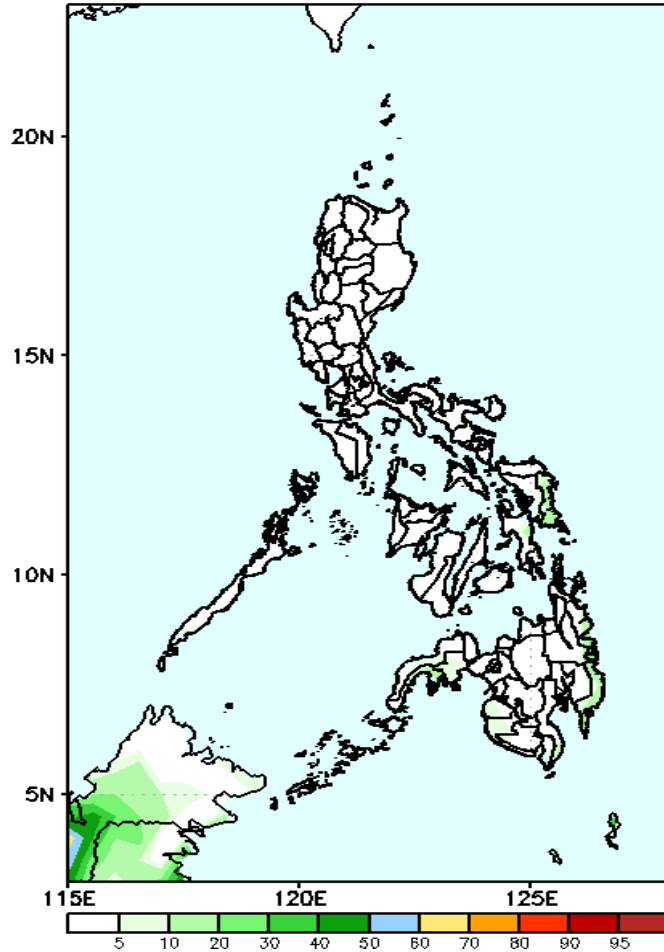


High probability of rainfall to exceed 50mm in Eastern Samar and Davao Oriental while less likely for the rest of the country during the forecast period.

Exceedance Probability > 100/150/200 mm

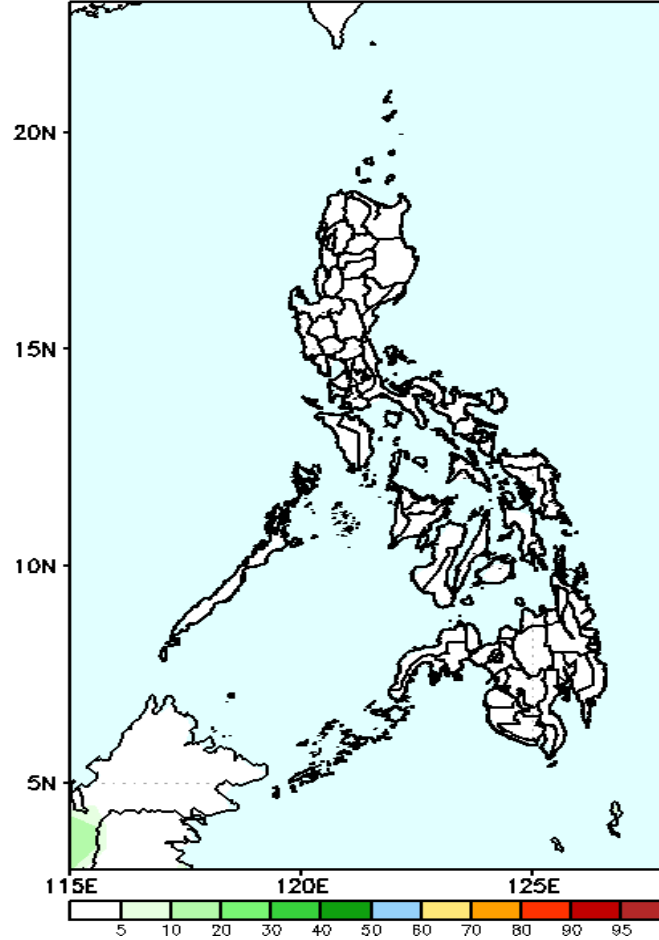
Week 1: Apr 29- May 05, 2021

GEFS Week-1 Exceedance Prob. > 100mm
Valid: 20210503 – 20210509



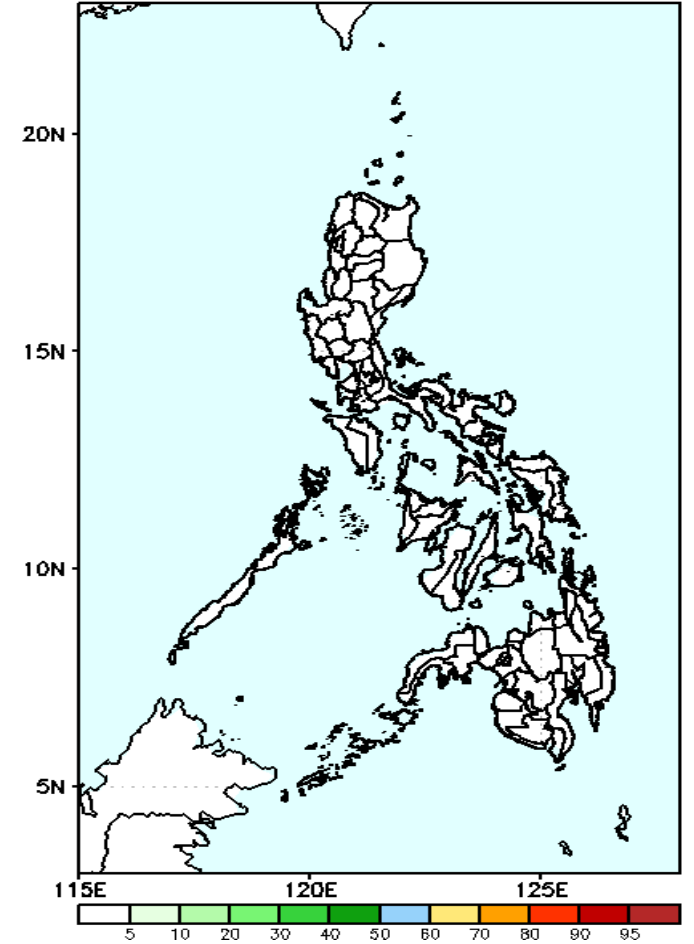
Less probability of rainfall to exceed 100mm in most parts of the country during the forecast period.

GEFS Week-1 Exceedance Prob. > 150mm
Valid: 20210503 – 20210509



Less probability of rainfall to exceed 150mm in most parts of the country during the forecast period.

GEFS Week-1 Exceedance Prob. > 200mm
Valid: 20210503 – 20210509

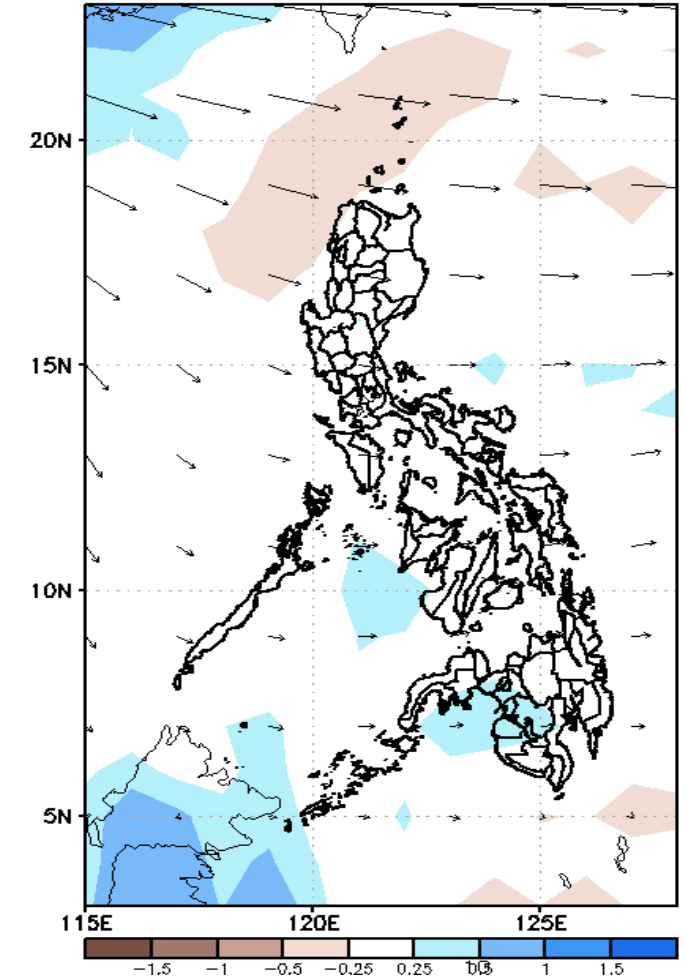
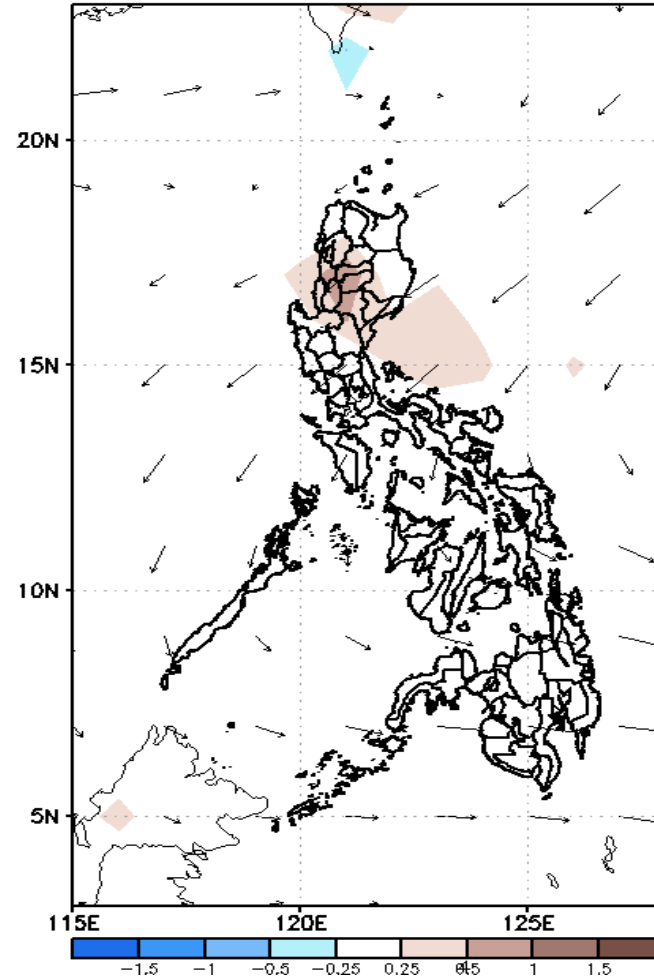
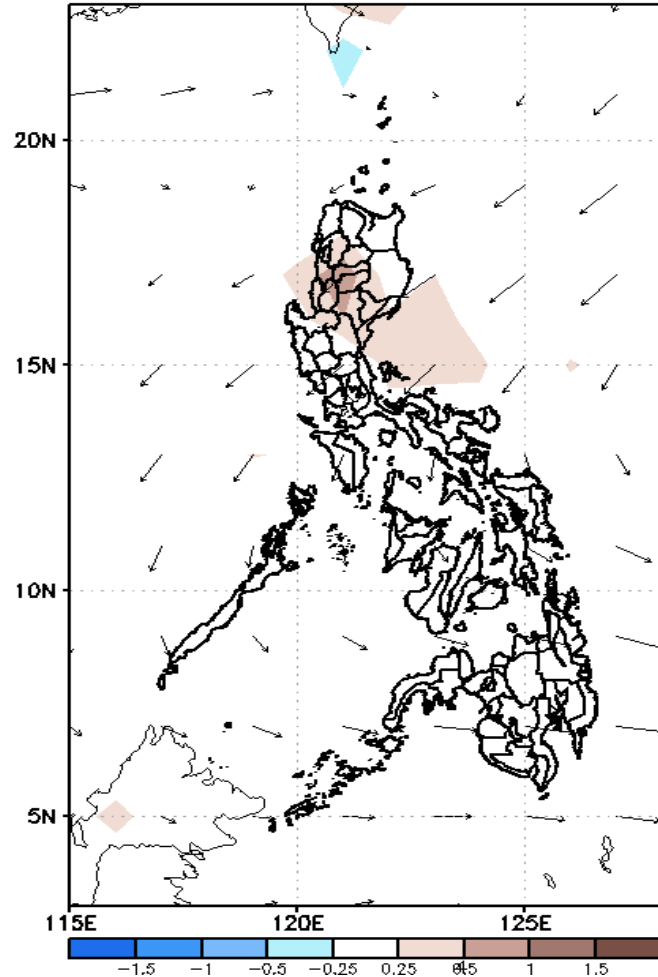


Less probability of rainfall to exceed 200mm in most parts of the country during the forecast period.

GEFS Week-2 Forecasts: Divergence & Wind Anomaly

Week 2: May 10-16, 2021

GEFS Week-2 850-hPa Divergence and Wind Anom
Valid: 20210510 - 20210516

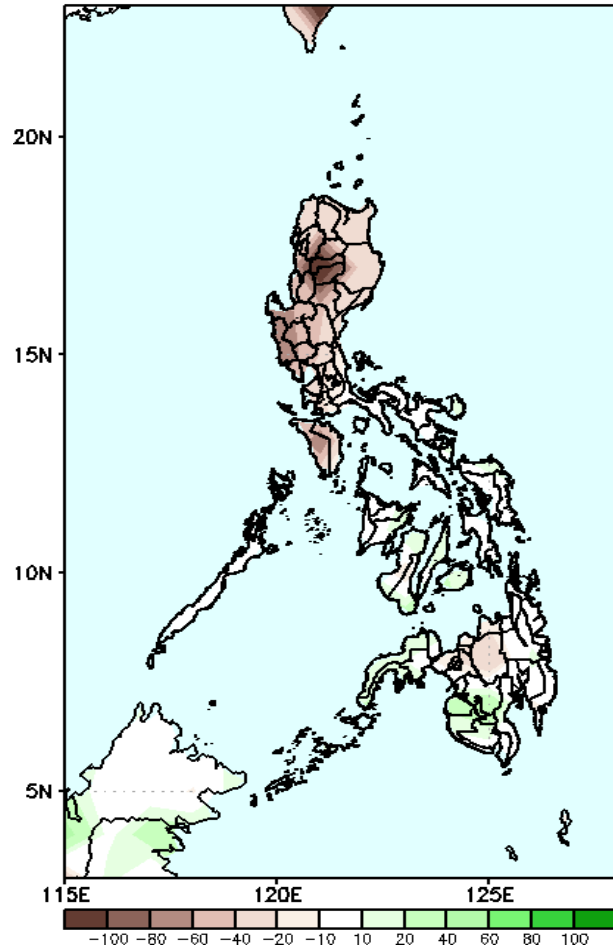


Upper and low level Divergence suggest less likelihood of precipitation in most of the country except some parts of Western Mindanao. Easterlies affecting most parts of the country attributing to hot and warm temperatures during the forecast period.

Precipitation Anomaly and Exceedance Probability > 25/50 mm

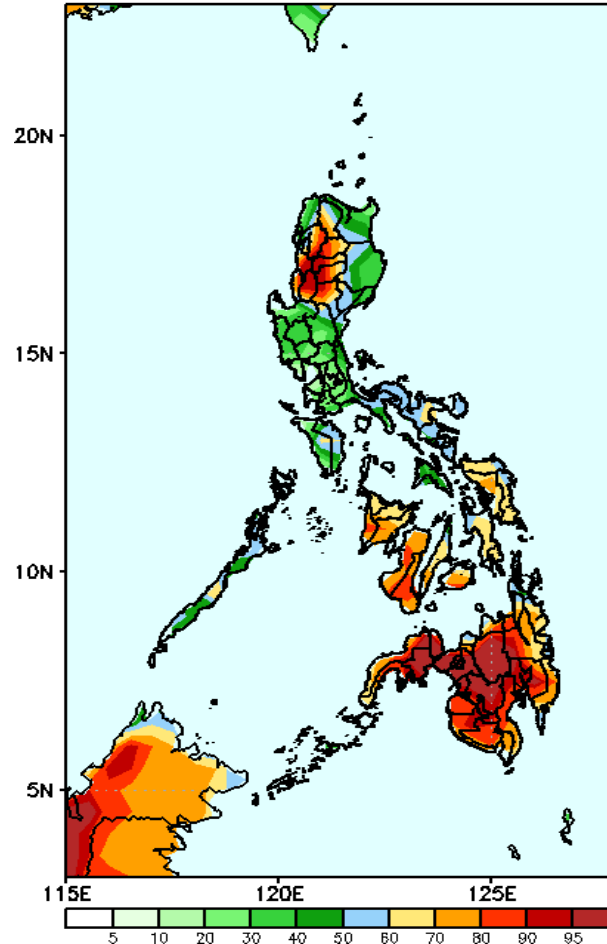
Week 2: May 10-16, 2021

GEFS Week-2 Precip Anomaly
Valid: 20210510 - 20210516



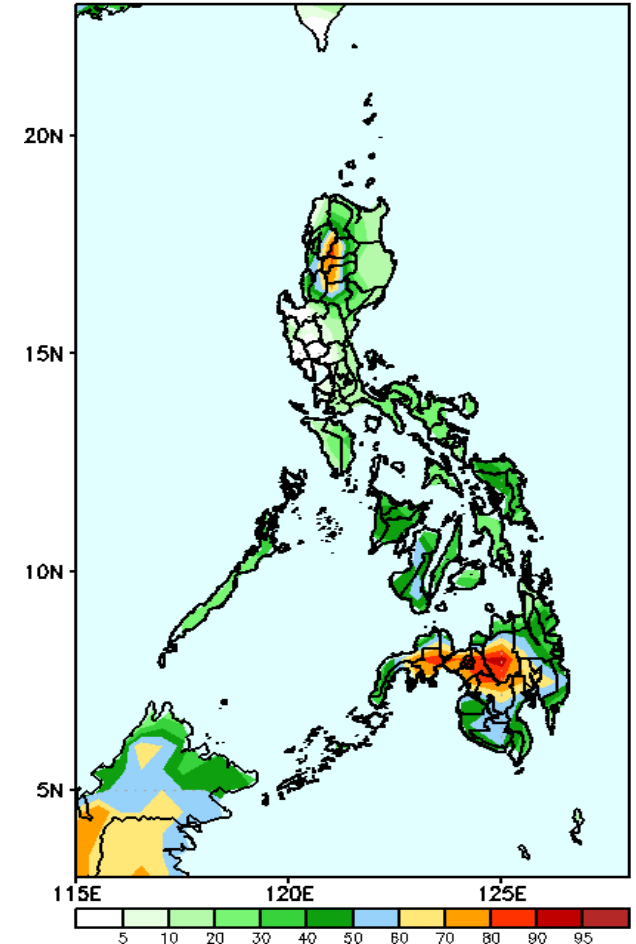
Rainfall deficit of up to 40-100mm is expected in most parts of Luzon (especially in Cordillera Region) and Bukidnon while increase of rainfall up to 60mm in western parts of Mindanao.

GEFS Week-2 Exceedance Prob. > 25mm
Valid: 20210510 - 20210516



High probability of rainfall to exceed 25mm in most parts of Cordillera region and most parts of Visayas and Mindanao is expected while less likely for the rest of the country during the forecast period.

GEFS Week-2 Exceedance Prob. > 50mm
Valid: 20210510 - 20210516

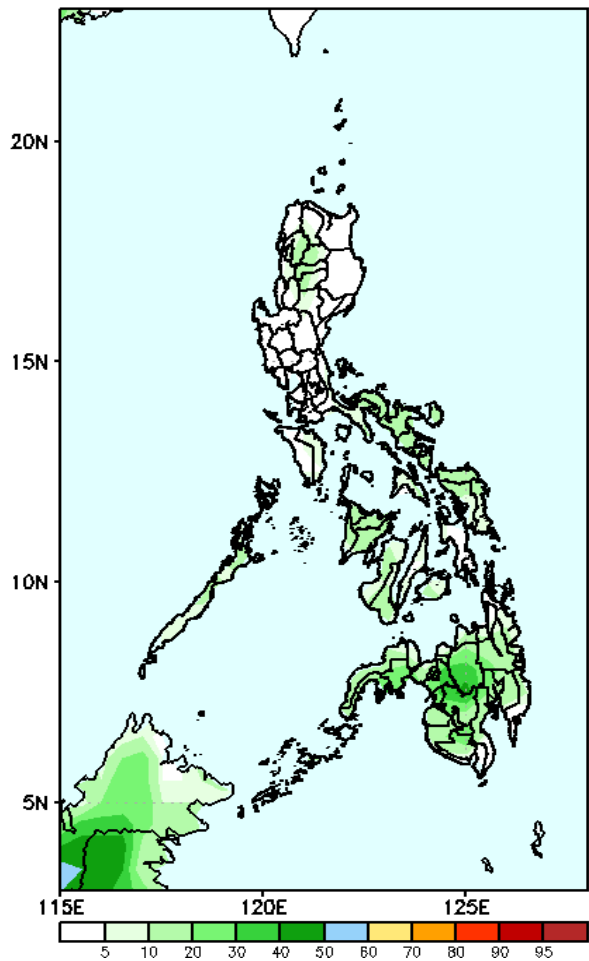


High probability of rainfall to exceed 50mm in some parts of Cordillera region, Central Mindanao and Zamboanga del Sur while less likely for the rest of the country during the forecast period.

Exceedance Probability > 100/150/200 mm

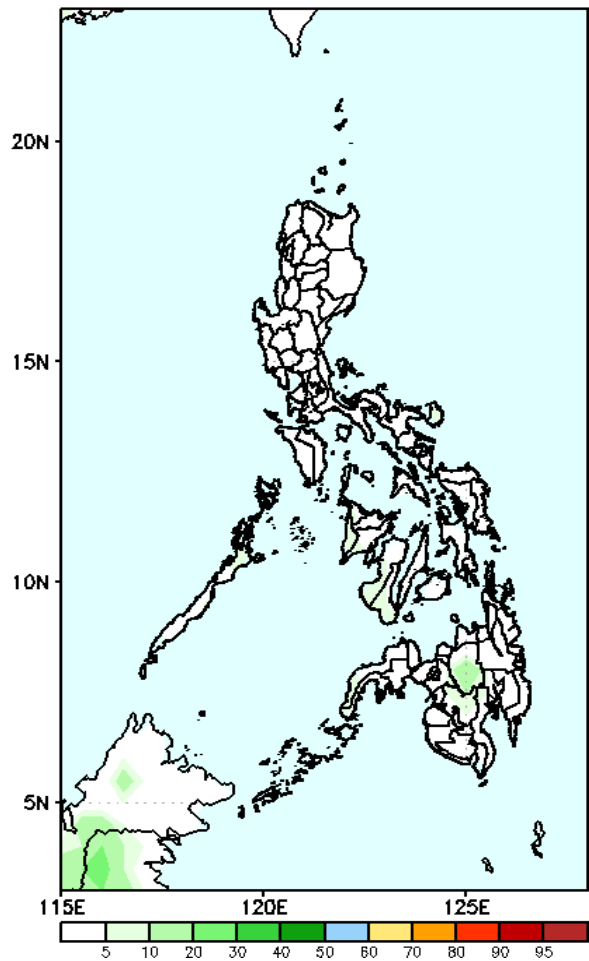
Week 2: May 10-16, 2021

GEFS Week-2 Exceedance Prob. > 100mm
Valid: 20210510 – 20210516



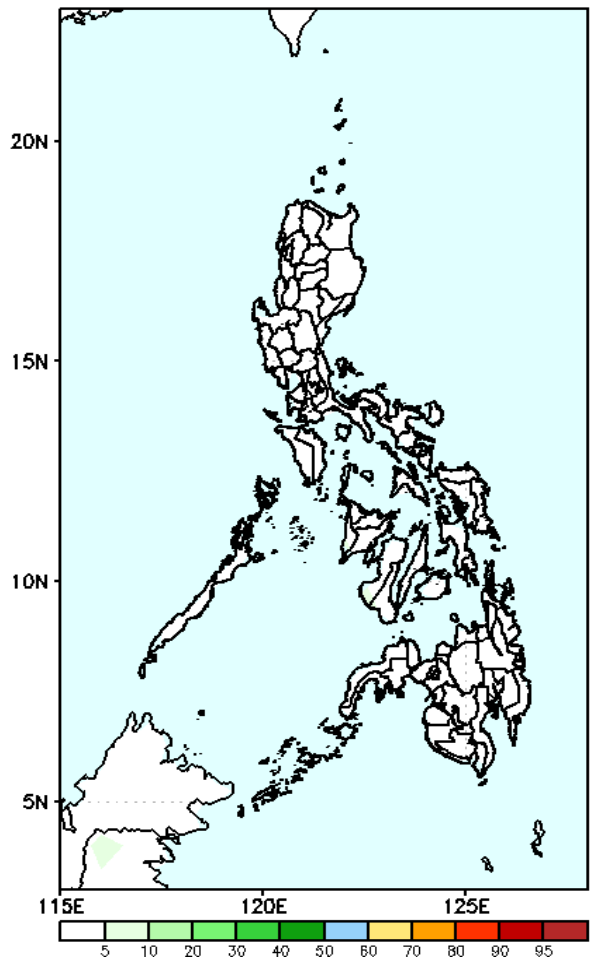
Less probability of rainfall to exceed 100mm in most parts of the country during the forecast period.

GEFS Week-2 Exceedance Prob. > 150mm
Valid: 20210510 – 20210516



Less probability of rainfall to exceed 150mm in most parts of the country during the forecast period.

GEFS Week-2 Exceedance Prob. > 200mm
Valid: 20210510 – 20210516

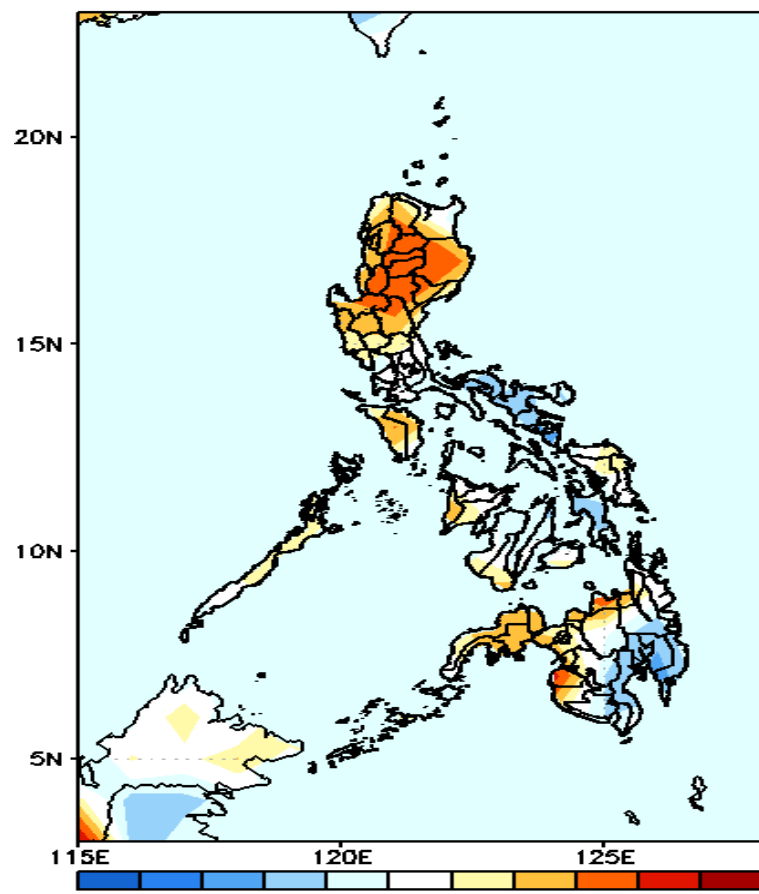


Less probability of rainfall to exceed 200mm in most parts of the country during the forecast period.



GEFS Week-1 & 2 Forecasts: T2m Anomaly

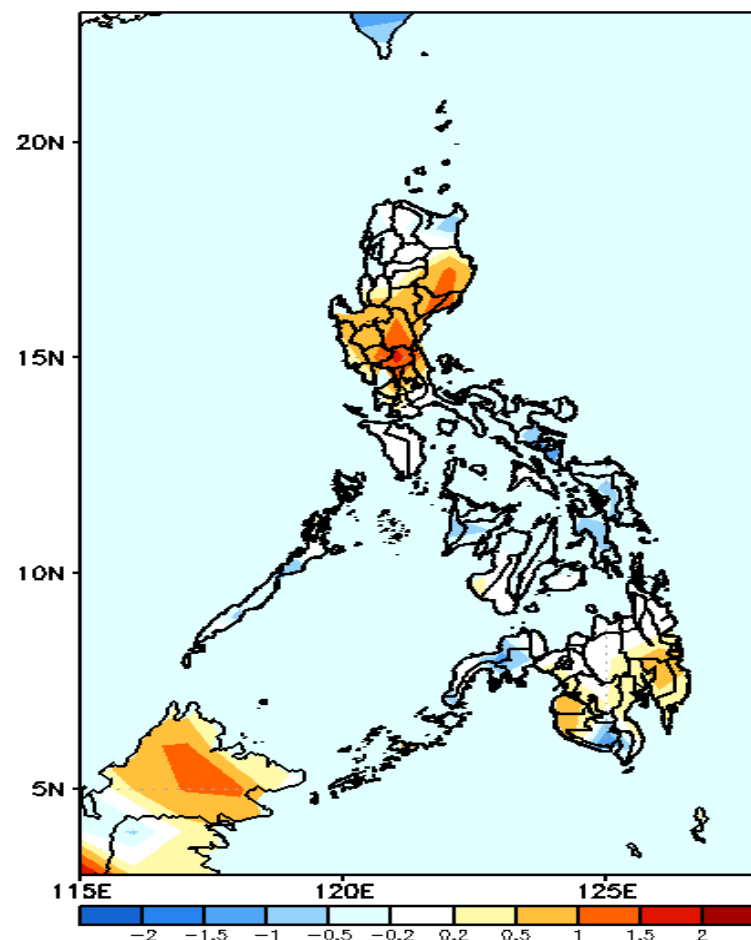
GEFS Week-1 T2m Anomaly
Valid: 20210503 - 20210509



2m Temperature Week 1: May 03-09, 2021

Warmer than average surface air temperature will likely experience in most parts of Luzon, average to slightly warmer in western Visayas and northern Mindanao while slightly cooler than average temperature in Bicol Region and southern Mindanao during the forecast period.

GEFS Week-2 T2m Anomaly
Valid: 20210510 - 20210516



2m Temperature Week 2: May 10-16, 2021

Slightly warmer to warmer than average surface air temperature will likely experience in Isabela, Central Luzon, CALABARZON, Davao Region, Maguindanao and Sultan Kudarat while average to slightly cooler than average temperature for the rest of the country during the forecast period.