



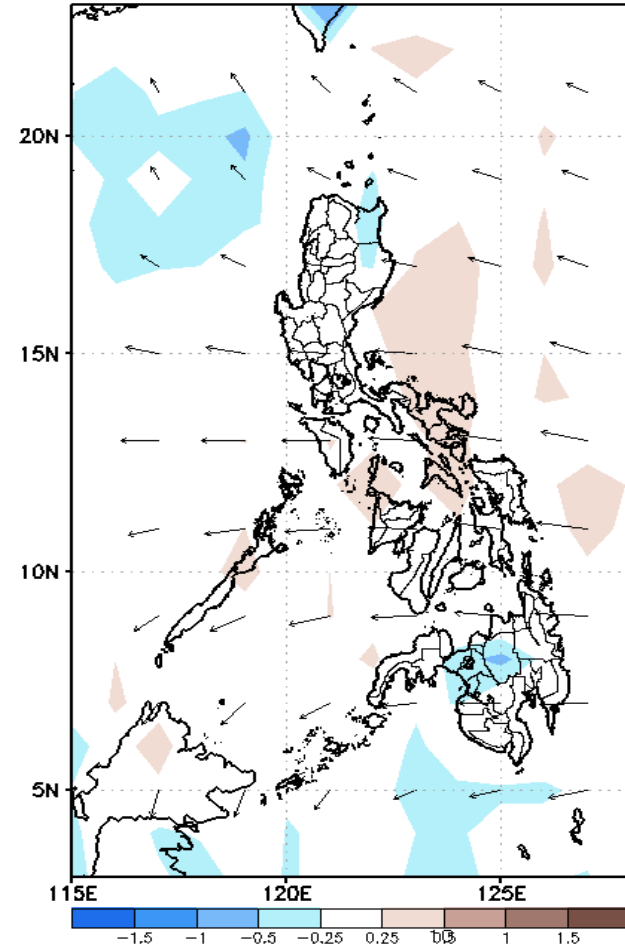
# Week 1 & Week 2 Forecast for the Philippines using GEFS Model



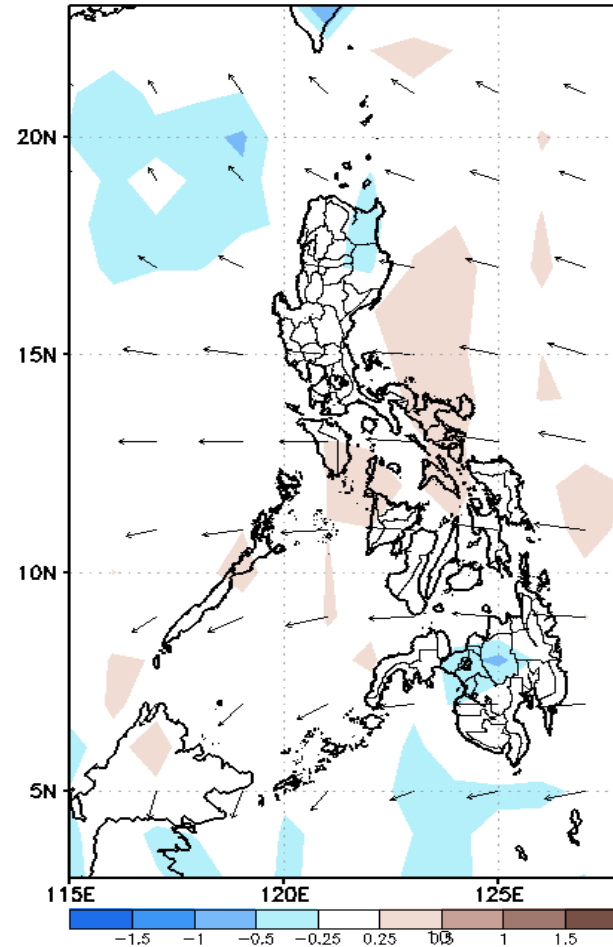
# GEFS Week-1 Forecasts: Divergence & Wind Anomaly

**Week 1: Aug 03-09, 2020**

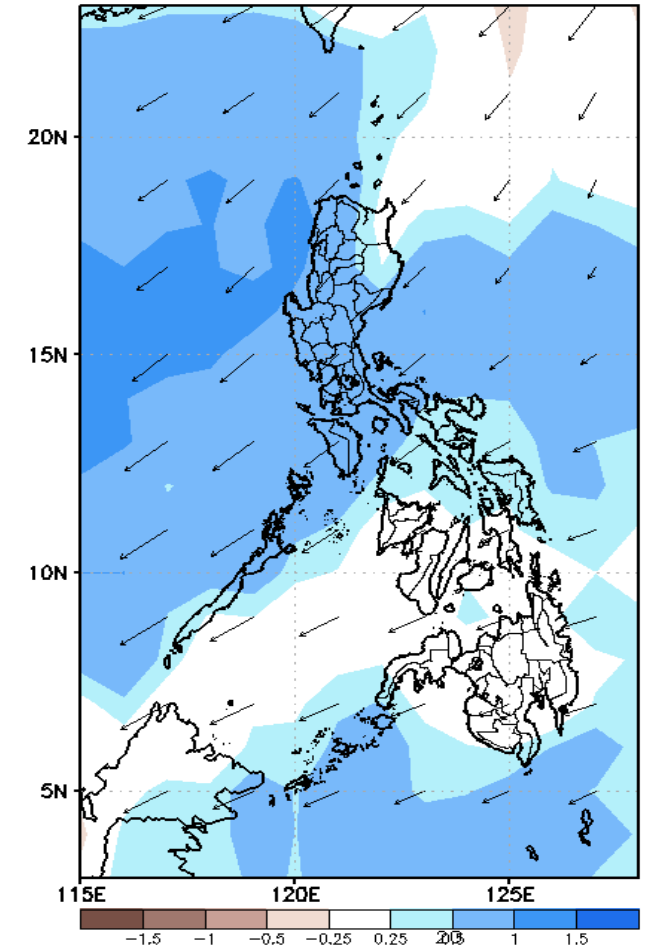
GEFS Week-1 850-hPa Divergence and Wind Anomaly  
Valid: 20200803 - 20200809



GEFS Week-1 700-hPa Divergence and Wind Anomaly  
Valid: 20200803 - 20200809



GEFS Week-1 200-hPa Divergence and Wind Anomaly  
Valid: 20200803 - 20200809

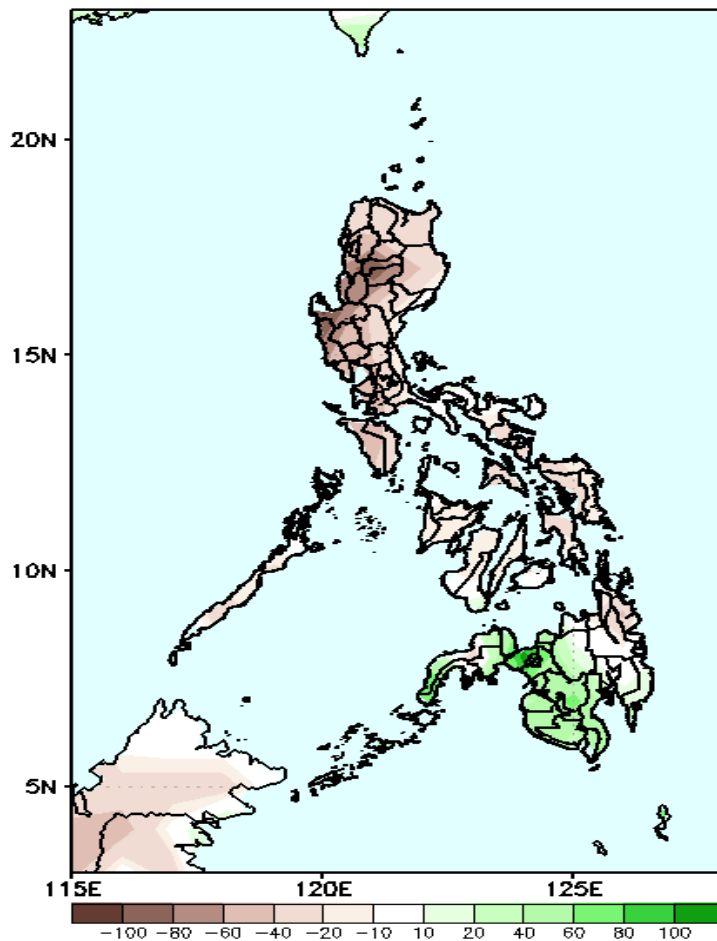


Upper level (200 hPa) Divergence suggest likelihood of precipitation in most parts of the country. Southwest monsoon affecting western Luzon while easterlies affecting the remaining parts of the country during the forecast period.

# Precipitation Anomaly and Exceedance Probability > 25/50 mm

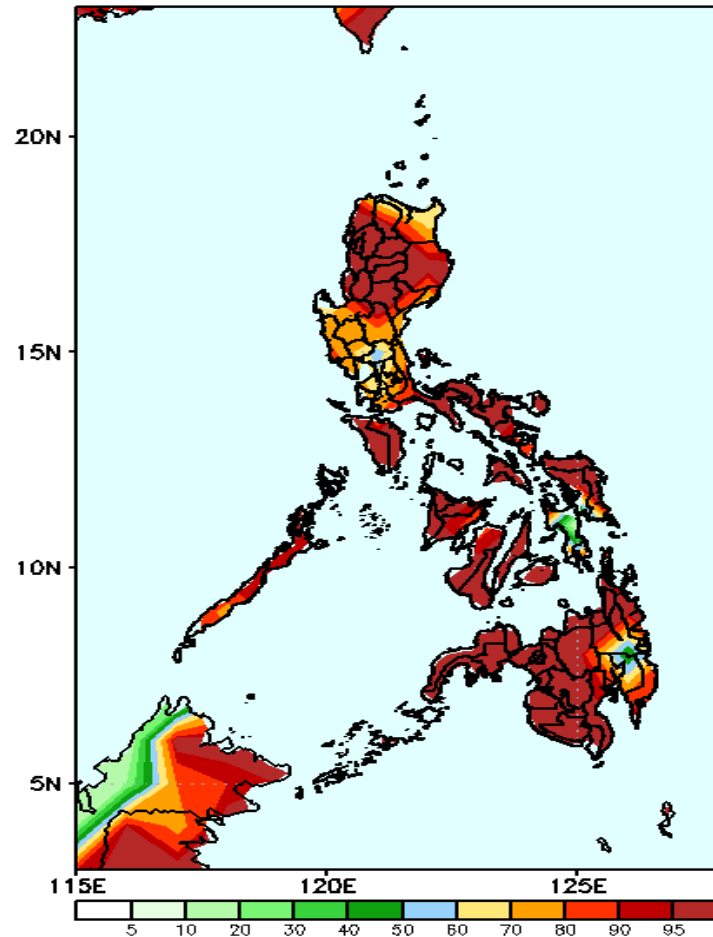
**Week 1: Aug 03-09, 2020**

GEFS Week-1 Precip Anomaly  
Valid: 20200803 - 20200809



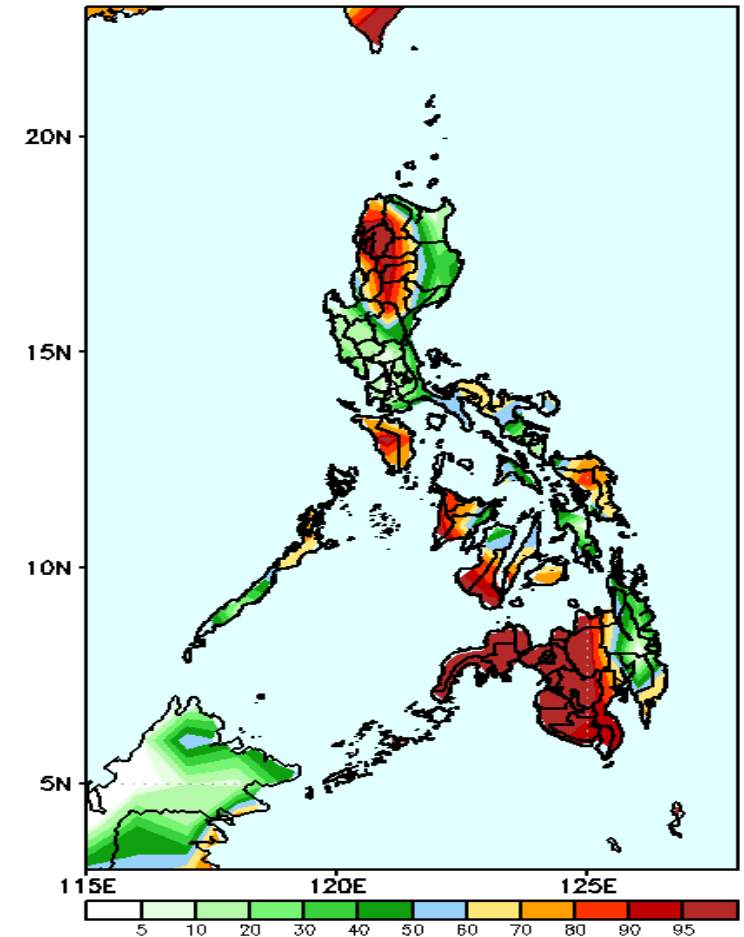
Rainfall deficit of up to 100mm in western Luzon and 20-60mm for the rest of Luzon and eastern Visayas while increase of rainfall of 20-80mm in western Mindanao is expected during the forecast period.

GEFS Week-1 Exceedance Prob. > 25mm  
Valid: 20200803 - 20200809



High probability of rainfall to exceed 25mm in most parts the country is expected during the forecast period.

GEFS Week-1 Exceedance Prob. > 50mm  
Valid: 20200803 - 20200809

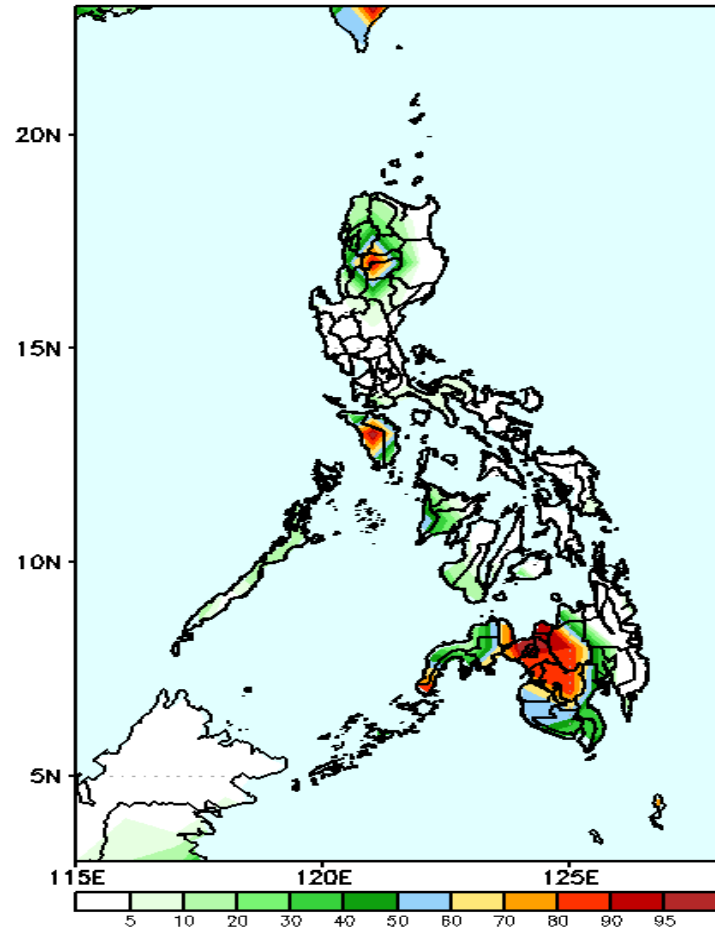


High probability of rainfall to exceed 50mm in the Regions of Ilocos and Cordillera, provinces of Nueva Viscaya, Nueva Ecija, Mindoro, Samar, western Visayas and in most parts of Mindanao (except CARAGA and Davao Region) during the forecast period.

# Exceedance Probability > 100/150/200 mm

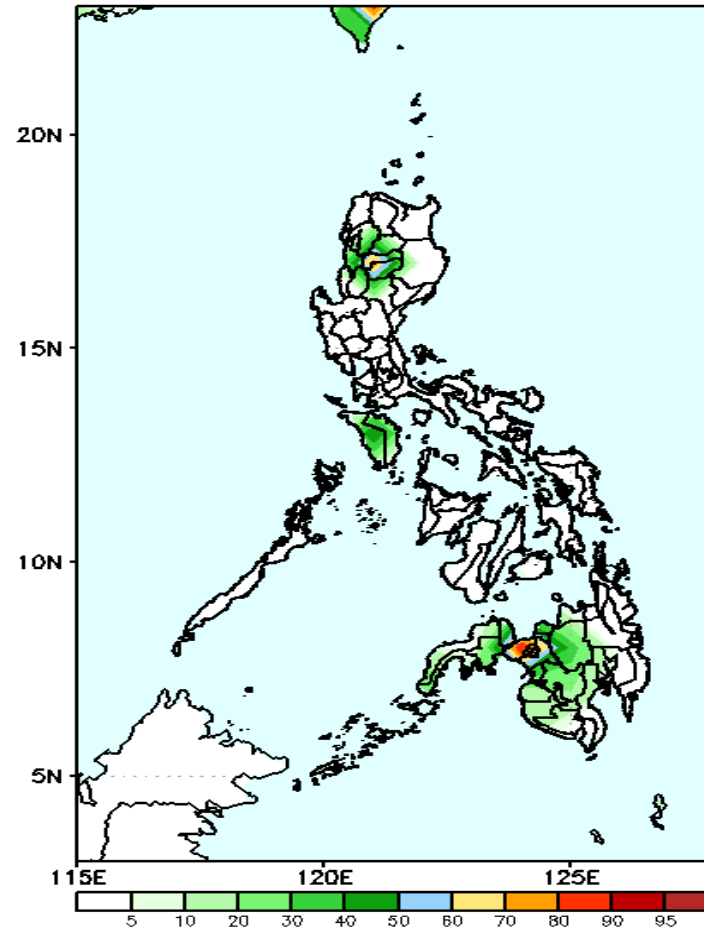
**Week 1: Aug 03-09, 2020**

GEFS Week-1 Exceedance Prob. > 100mm  
Valid: 20200803 — 20200809



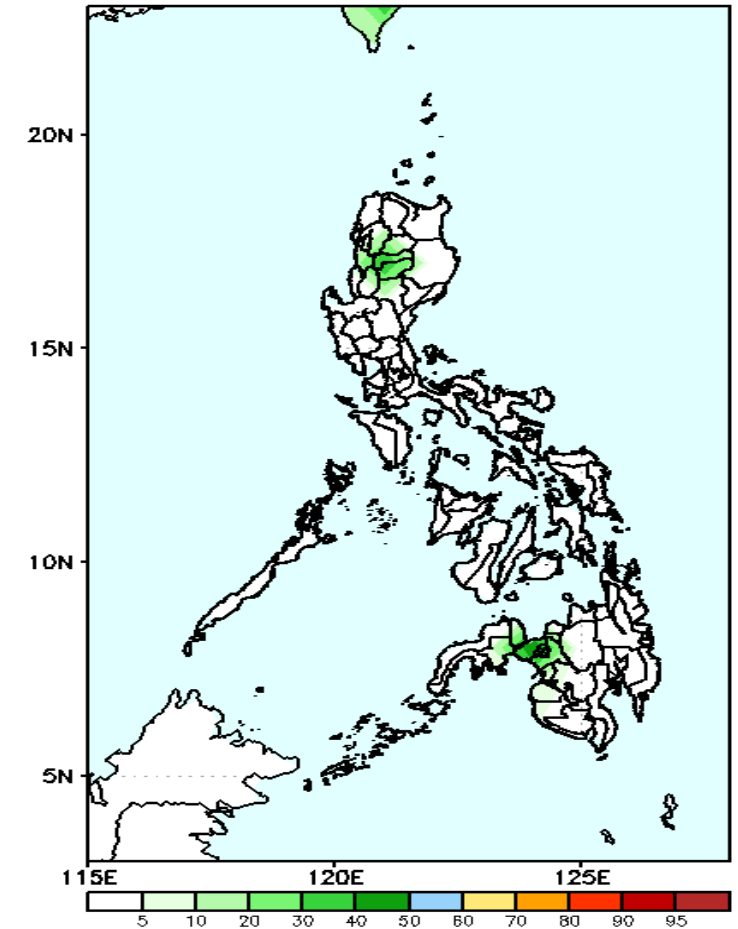
High probability of rainfall to exceed 100mm in Mt. Province, Ifugao, Mindoro and in northeastern parts of Mindanao while less likely for the rest of the country during the forecast period.

GEFS Week-1 Exceedance Prob. > 150mm  
Valid: 20200803 — 20200809



50-90 probability of rainfall to exceed 150mm in Mt. Province, Ifugao and Lanao del Norte while less likely for the rest of the country during the forecast period.

GEFS Week-1 Exceedance Prob. > 200mm  
Valid: 20200803 — 20200809



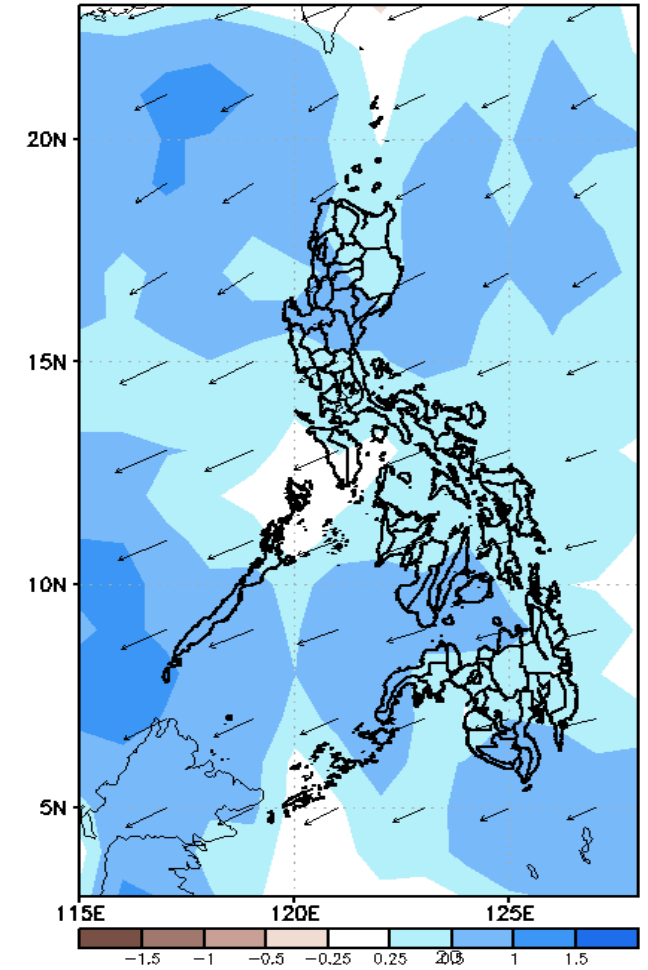
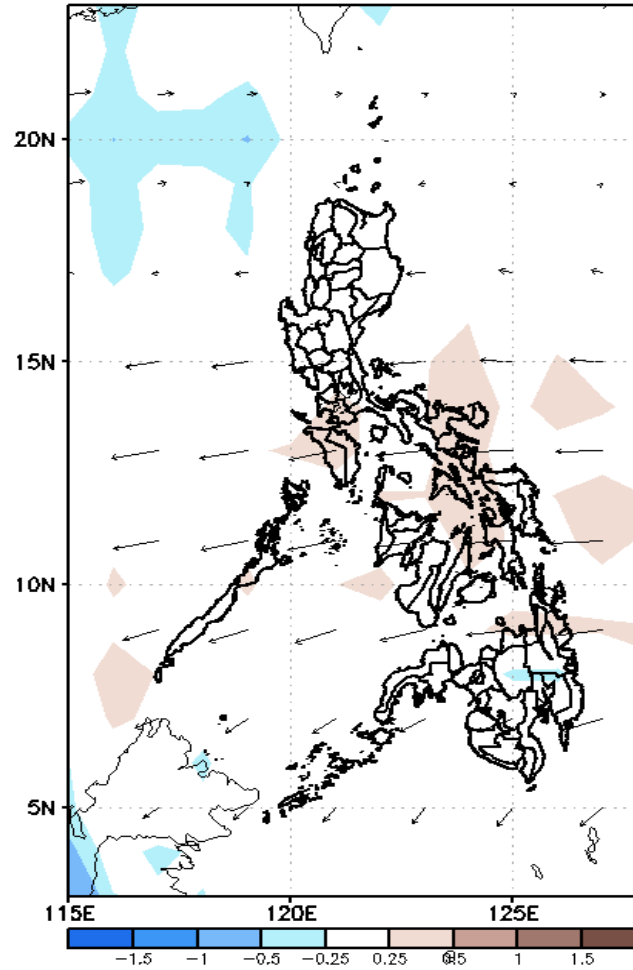
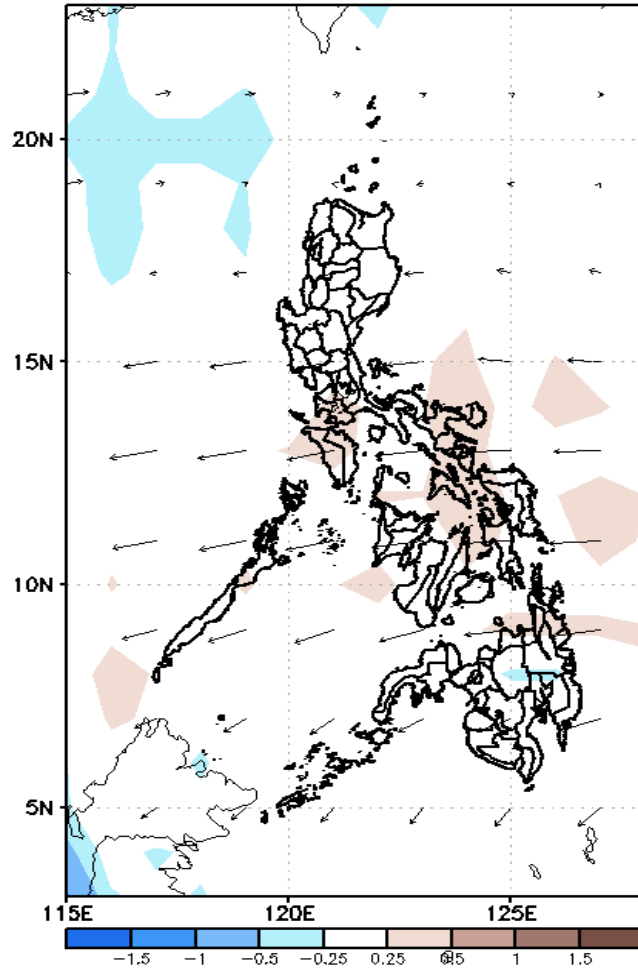
Less probability of rainfall to exceed 200mm in most parts of the country during the forecast period.



# GEFS Week-2 Forecasts: Divergence & Wind Anomaly

## Week 2: Aug 10-16, 2020

GEFS Week-2 850-hPa Divergence and Wind Anomc GEFS Week-2 700-hPa Divergence and Wind Anomc GEFS week-2 200-hPa Divergence and Wind Anom  
Valid: 20200810 - 20200816 Valid: 20200810 - 20200816 Valid: 20200810 - 20200816

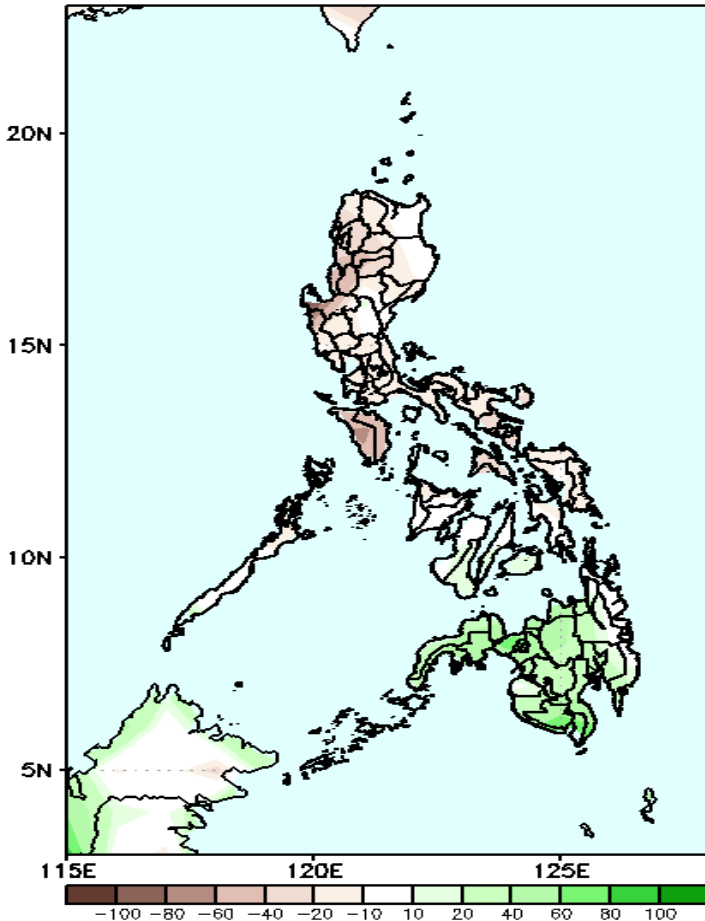


Upper level (200 hPa) Divergence suggest likelihood of precipitation in most parts of the country. Easterlies affecting most parts of the country during the forecast period.

# Precipitation Anomaly and Exceedance Probability > 25/50 mm

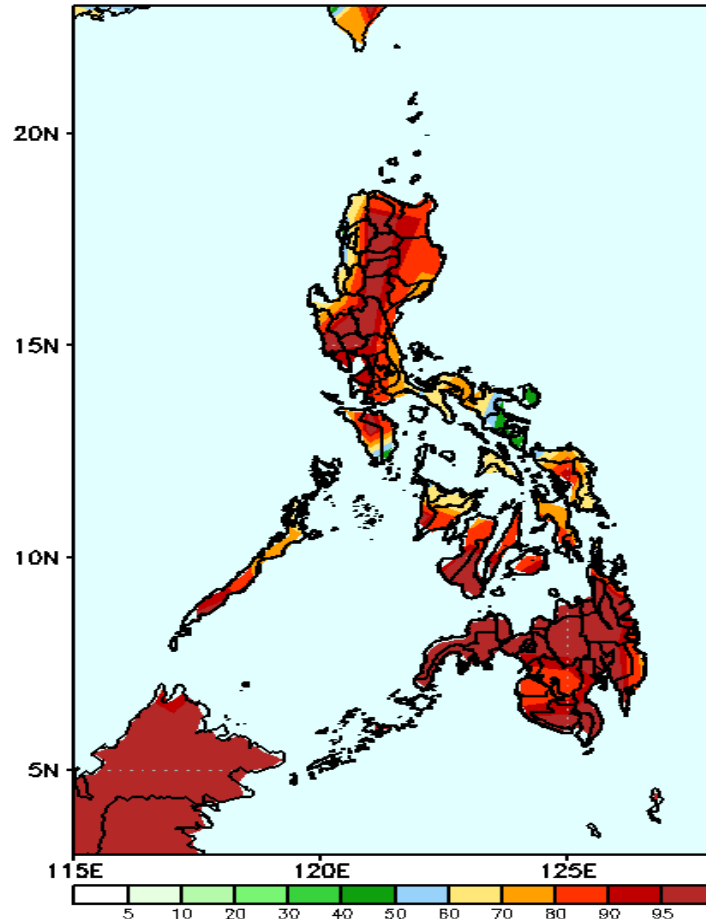
## Week 2: Aug 10-16, 2020

GEFS Week-2 Precip Anomaly  
Valid: 20200810 - 20200816



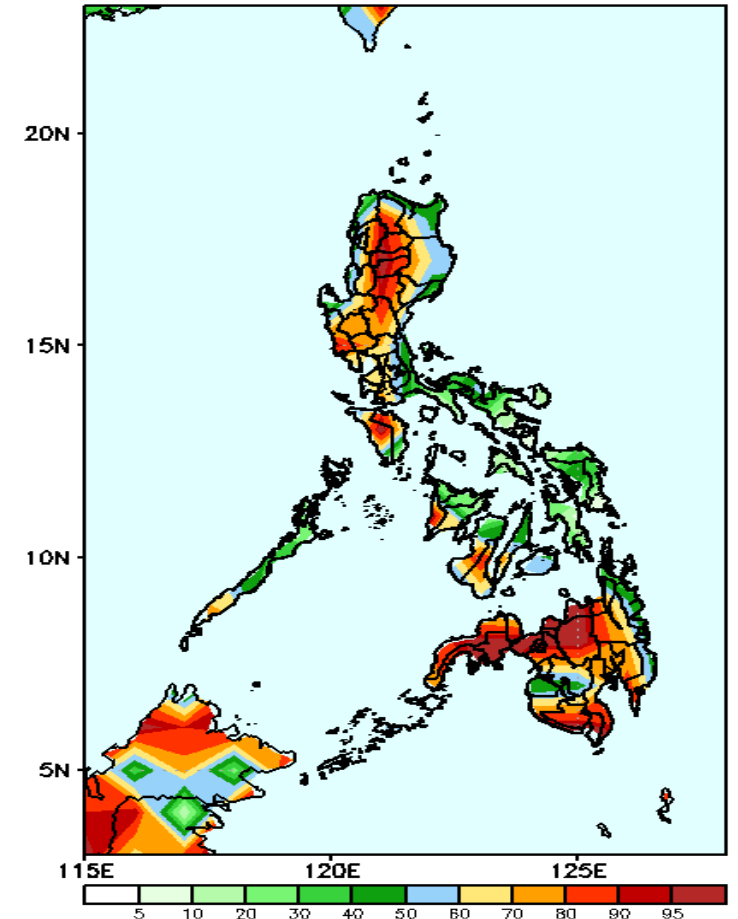
Rainfall deficit of up to 100mm in Mindoro and 20-60mm in western Luzon while increase of rainfall of 20-80mm in western Mindanao is expected during the forecast period.

GEFS Week-2 Exceedance Prob. > 25mm  
Valid: 20200810 - 20200816



High probability of rainfall to exceed 25mm in most parts of the country is expected during the forecast period.

GEFS Week-2 Exceedance Prob. > 50mm  
Valid: 20200810 - 20200816



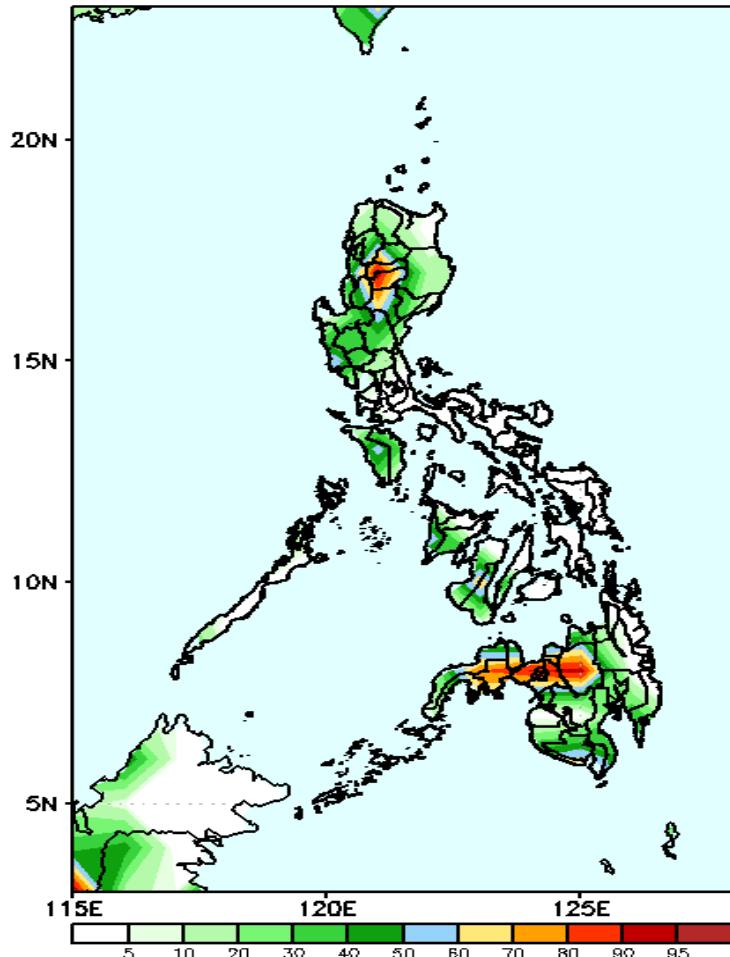
High probability of rainfall to exceed 50mm in most parts of Luzon (except eastern parts), in western Visayas and most parts of Mindanao while less likely for the rest of the country during the forecast period.



# Exceedance Probability > 100/150/200 mm

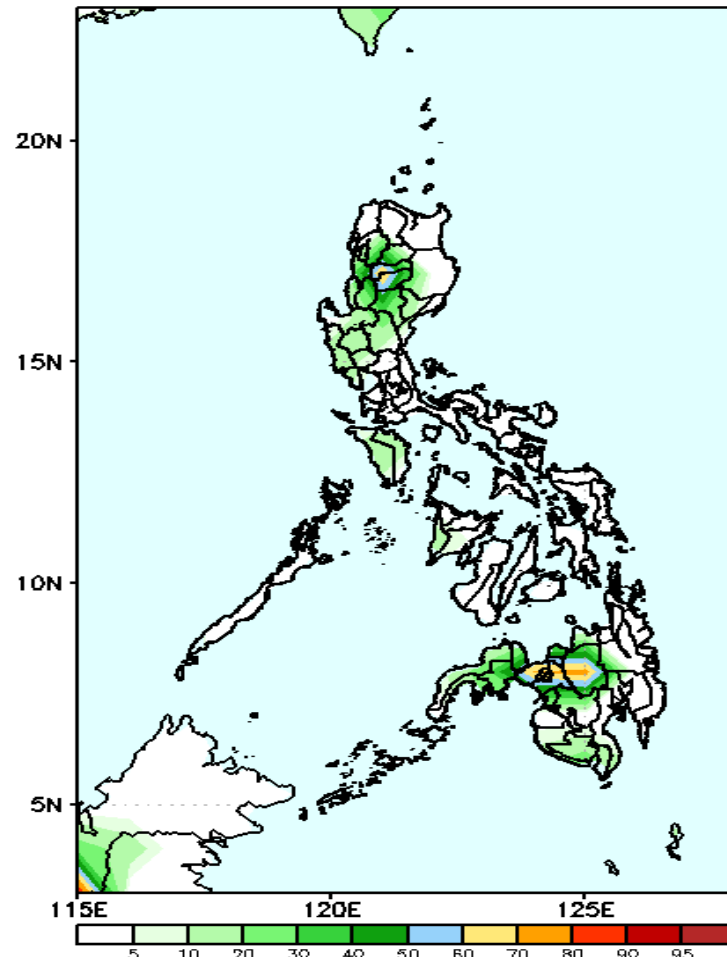
## Week 2: Aug 10-16, 2020

GEFS Week-2 Exceedance Prob. > 100mm  
Valid: 20200810 - 20200816



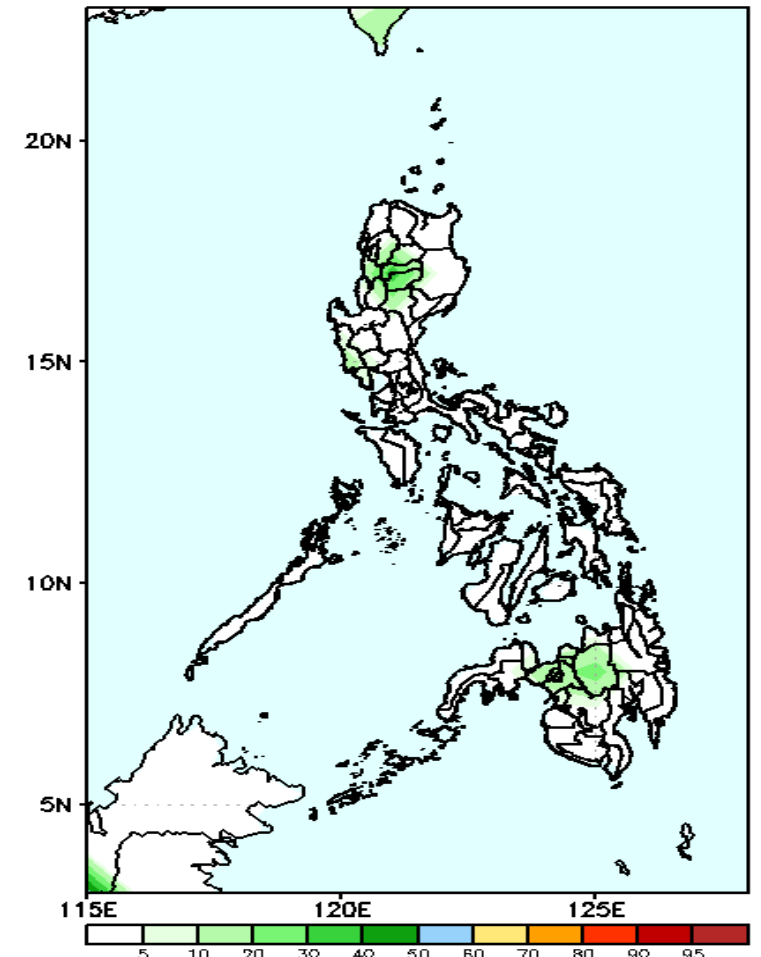
50-95% probability of rainfall to exceed 100mm in Cordillera Region, Northern Mindanao and Zamboanga Peninsula while less likely for the rest of the country during the forecast period.

GEFS Week-2 Exceedance Prob. > 150mm  
Valid: 20200810 - 20200816



50-80% probability of rainfall to exceed 150mm in Mt. Province, Ifugao, Bukidnon and Lanao provinces while less likely for the rest of the country during the forecast period.

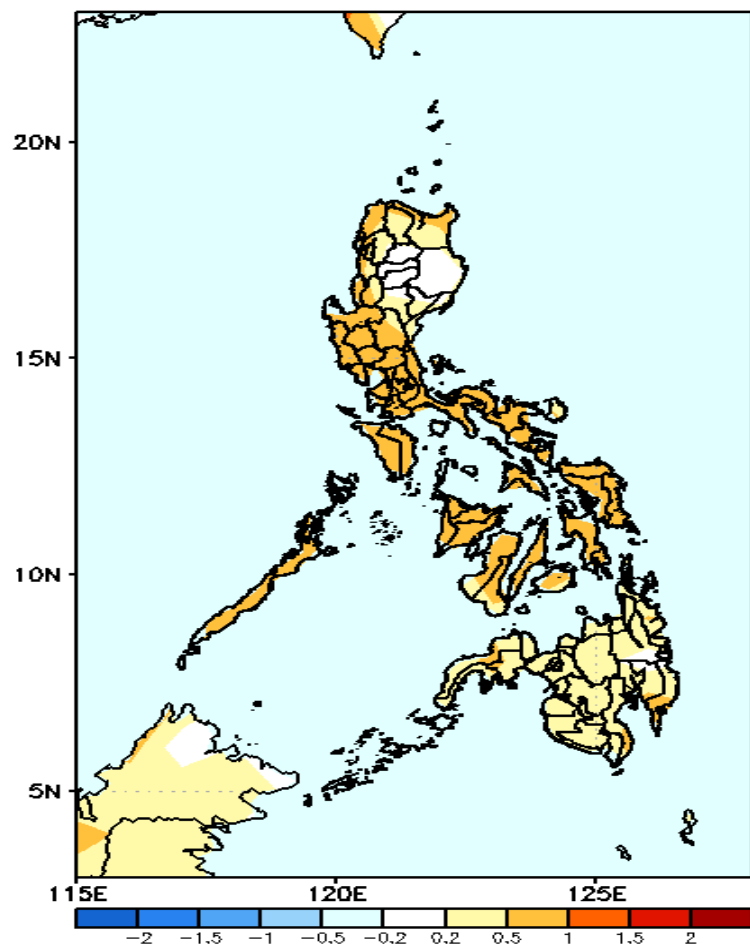
GEFS Week-2 Exceedance Prob. > 200mm  
Valid: 20200810 - 20200816



Less probability of rainfall to exceed 200mm in most parts of the country during the forecast period.

# GEFS Week-1 & 2 Forecasts: T2m Anomaly

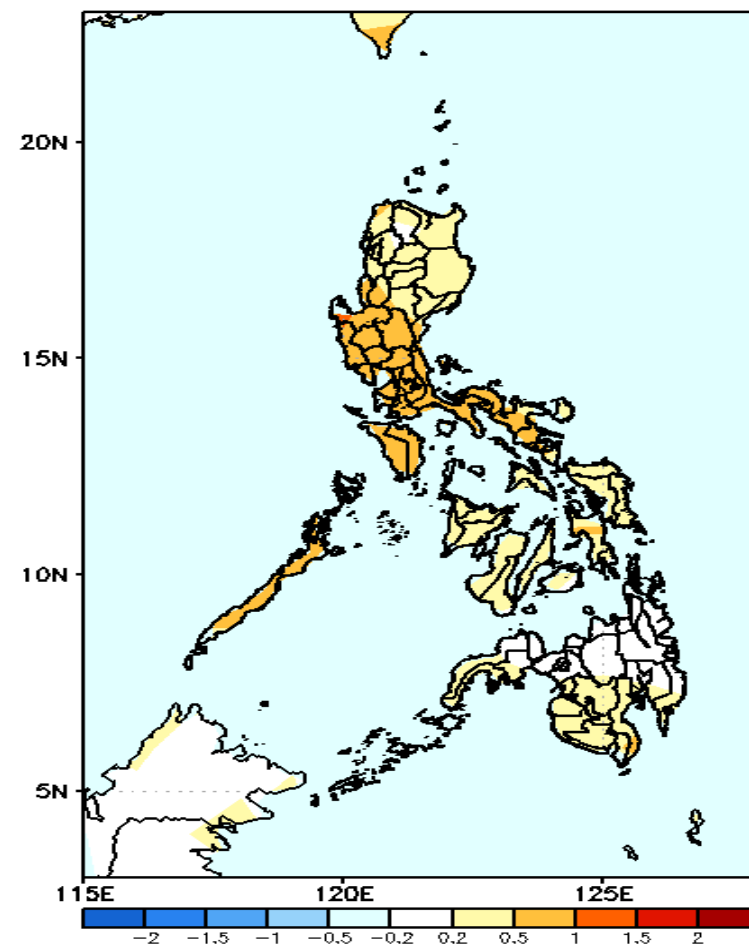
GEFS Week-1 T2m Anomaly  
Valid: 20200803 – 20200809



## 2m Temperature Week 1: Aug 03-09, 2020

Average to slightly warmer than average surface air temperature will likely experience in most parts of the country during the forecast period.

GEFS Week-2 T2m Anomaly  
Valid: 20200810 – 20200816



## 2m Temperature Week 2: Aug 10-16, 2020

Average to slightly warmer than average surface air temperature will likely experience in most parts of the country during the forecast period.