



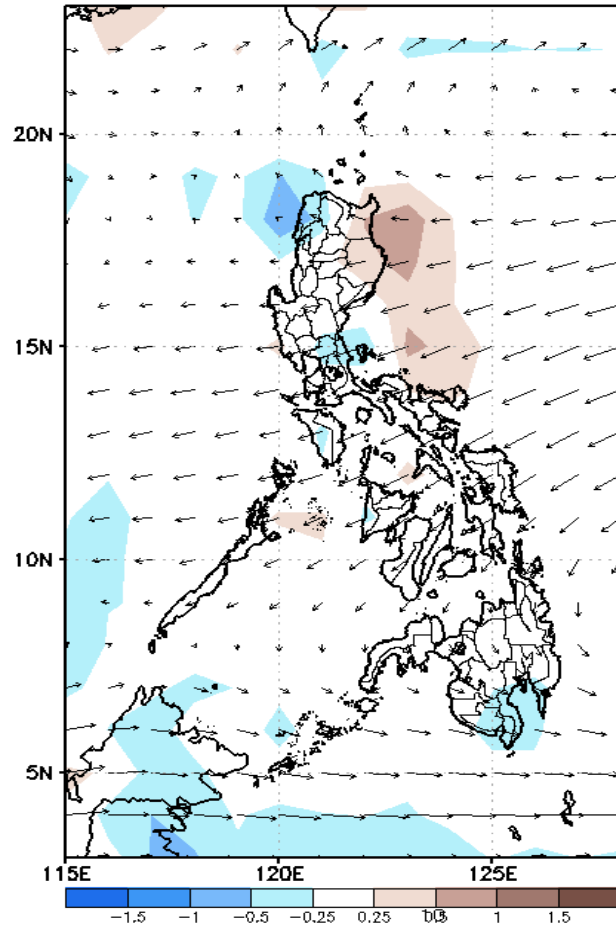
Week 1 & Week 2 Forecast for the Philippines using GEFS Model



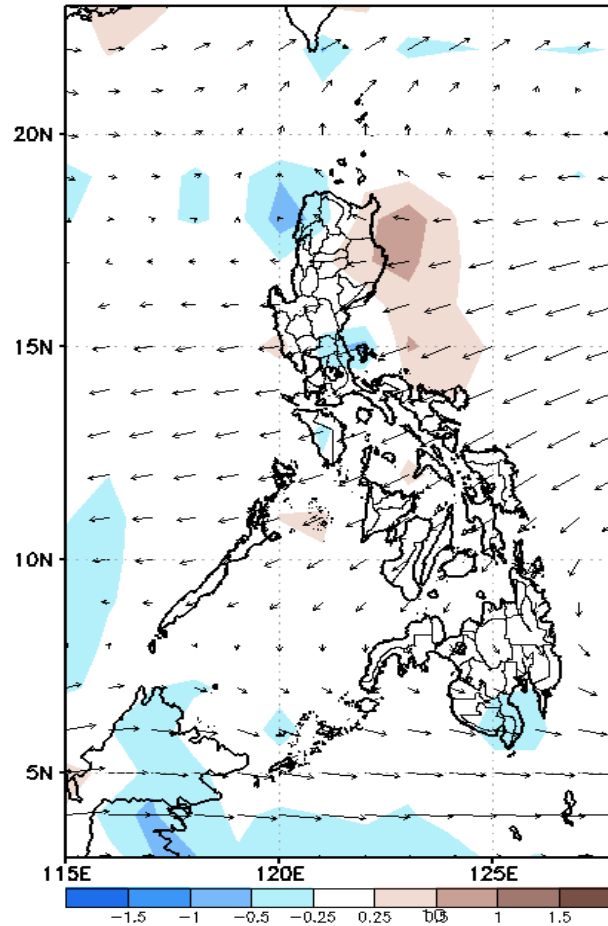
GEFS Week-1 Forecasts: Divergence & Wind Anomaly

Week 1: Apr 04-12, 2022

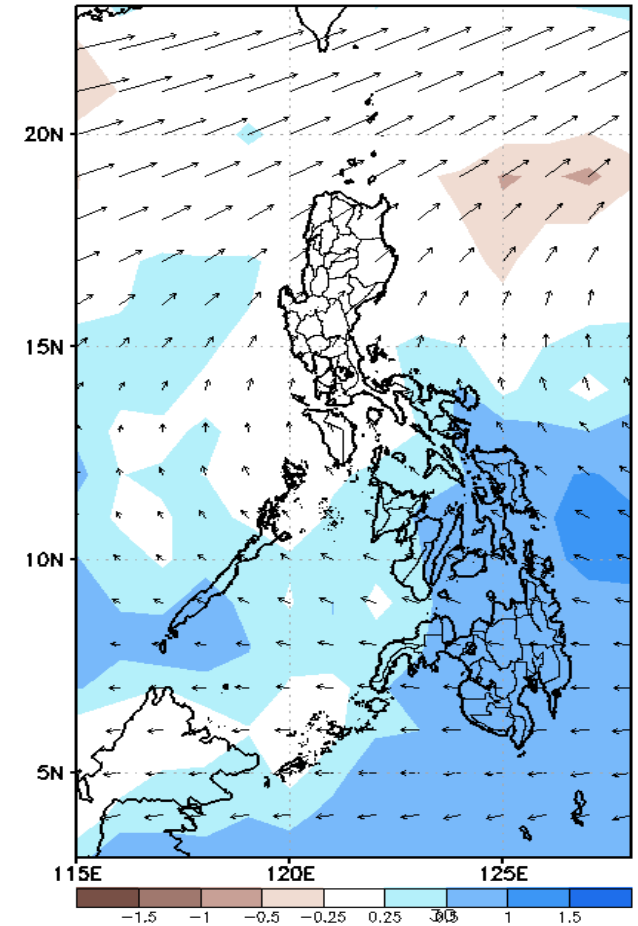
GEFS Week-1 850-hPa Divergence and Wind Anom.
Valid: 20220404 - 20220410



GEFS Week-1 700-hPa Divergence and Wind Anom.
Valid: 20220404 - 20220410



GEFS Week-1 200-hPa Divergence and Wind Anom.
Valid: 20220404 - 20220410

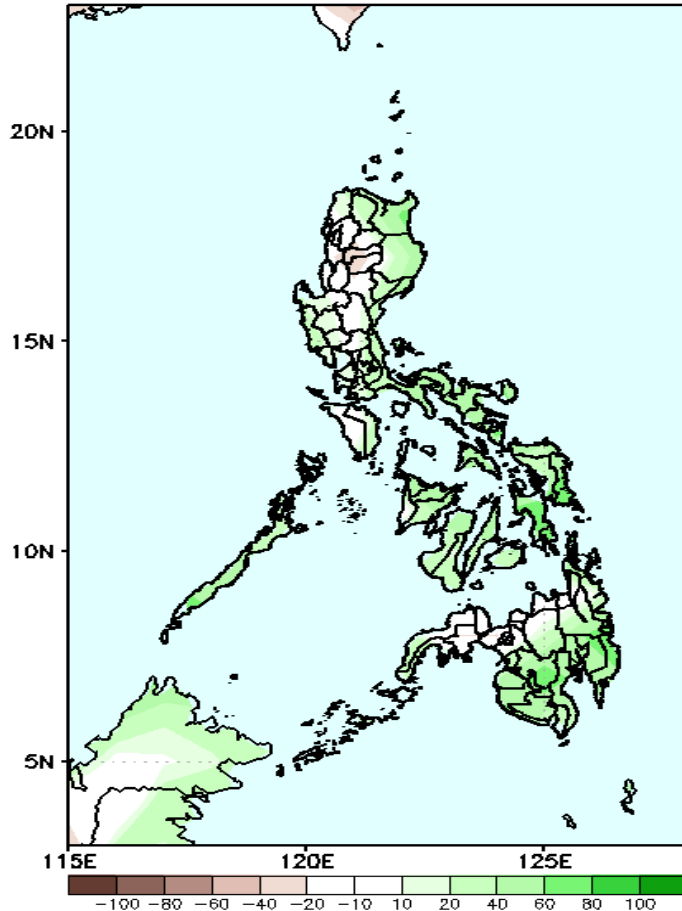


Upper and low level Divergence suggest a likelihood of light to moderate precipitation in Palawan, Bicol region and most parts of Visayas and Mindanao due to localized thunderstorm. Easterlies affecting most parts of the country attributing to warmer temperatures during the forecast period.

Precipitation Anomaly and Exceedance Probability > 25/50 mm

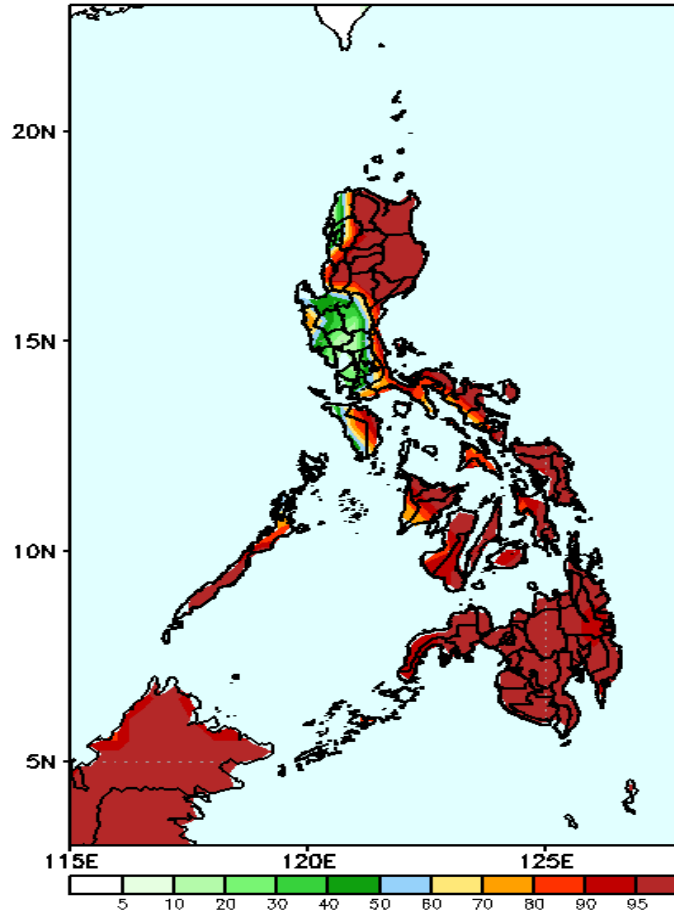
Week 1: Apr 04-10, 2022

GEFS Week-1 Precip Anomaly
Valid: 20220404 - 20220410



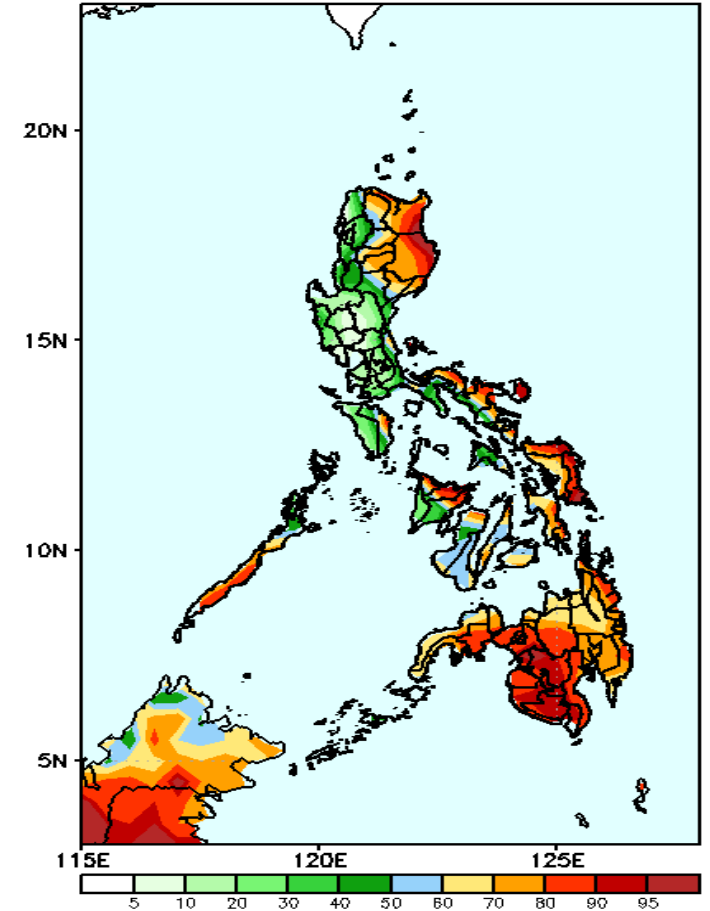
Increase of rainfall of 50-100mm in most parts of the country except in some areas in Cordillera Region, Central Luzon and Northern Mindanao during the forecast period.

GEFS Week-1 Exceedance Prob. > 25mm
Valid: 20220404 - 20220410



High probability of rainfall to exceed 25mm in most parts of the country except in Pangasinan and most areas of Central Luzon during the forecast period.

GEFS Week-1 Exceedance Prob. > 50mm
Valid: 20220404 - 20220410

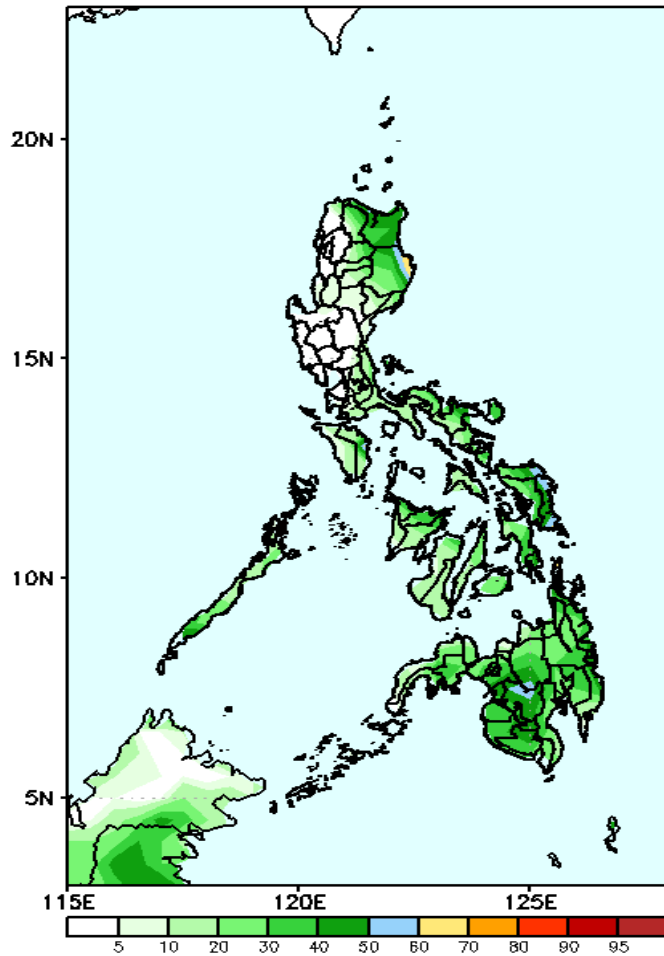


70-100% probability of rainfall to exceed 50mm Cordillera Region, Cagayan Valley, Bicol Region, Or. Mindoro, Palawan and most parts of Visayas & Mindanao while less likely for the rest of the country during the forecast period.

Exceedance Probability > 100/150/200 mm

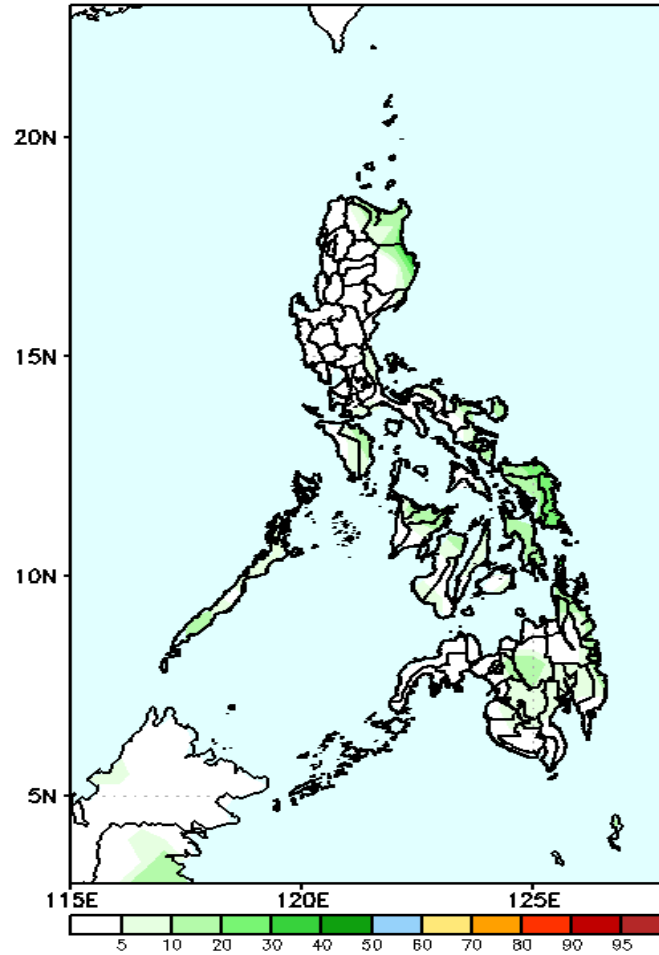
Week 1: Apr 04-10, 2022

GEFS Week-1 Exceedance Prob. > 100mm
Valid: 20220404 - 20220410



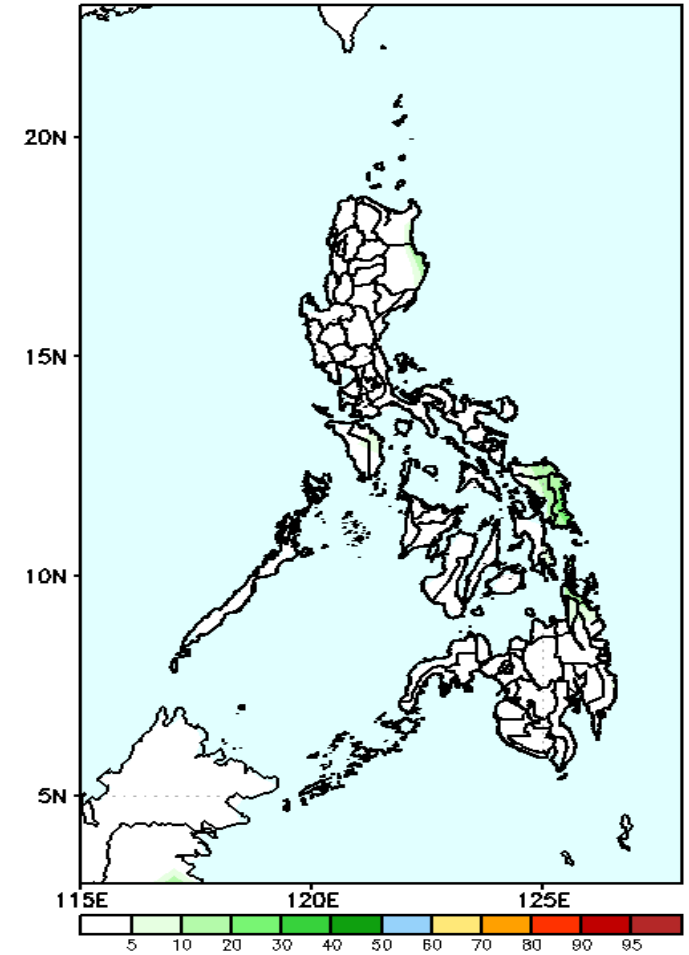
Low probability of rainfall to exceed 100mm in most parts of the country during the forecast period.

GEFS Week-1 Exceedance Prob. > 150mm
Valid: 20220404 - 20220410



Low probability of rainfall to exceed 150mm in most parts of the country during the forecast period.

GEFS Week-1 Exceedance Prob. > 200mm
Valid: 20220404 - 20220410



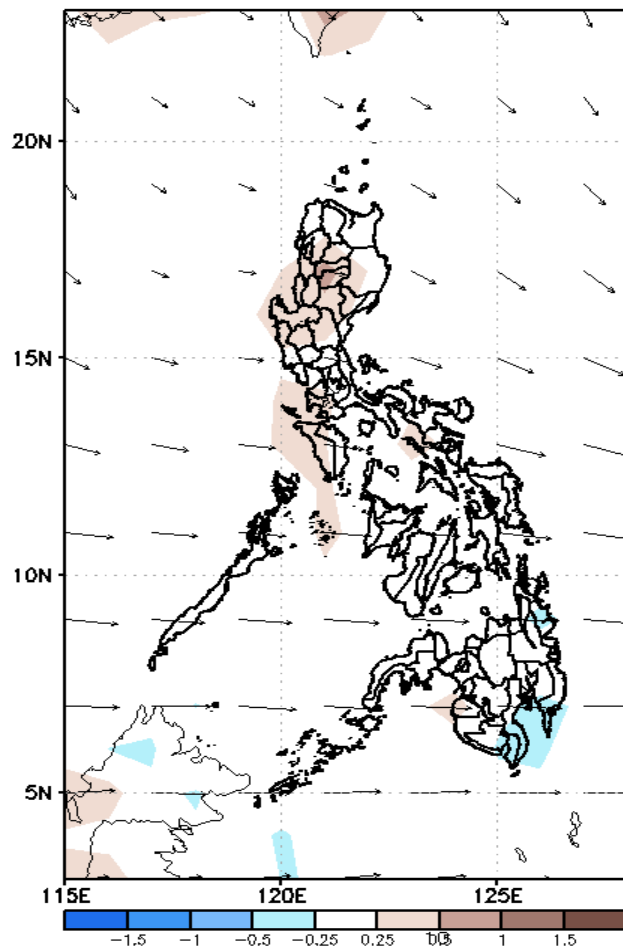
Low probability of rainfall to exceed 200mm in most parts of the country during the forecast period.



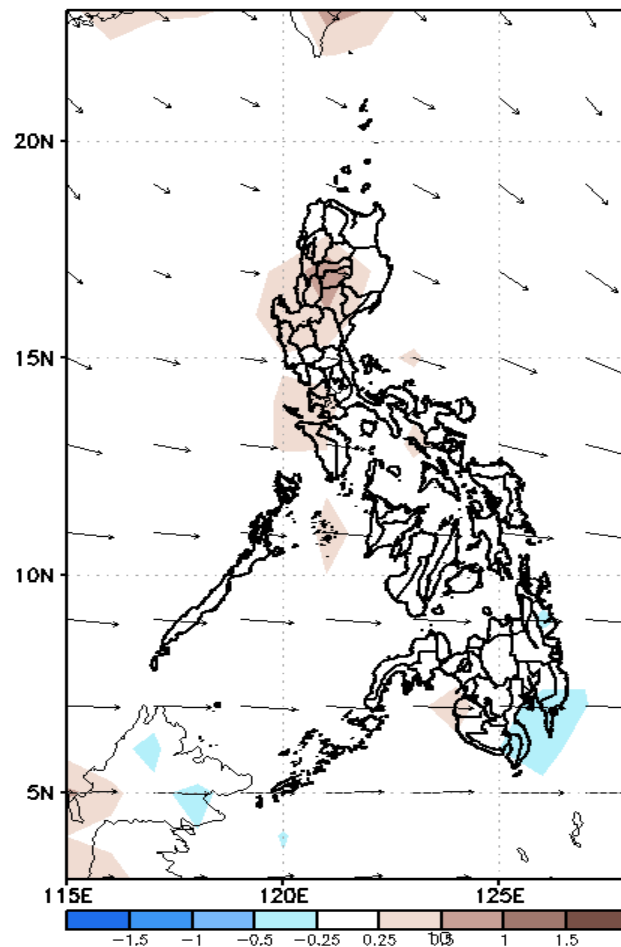
GEFS Week-2 Forecasts: Divergence & Wind Anomaly

Week 2: Apr 11-17, 2022

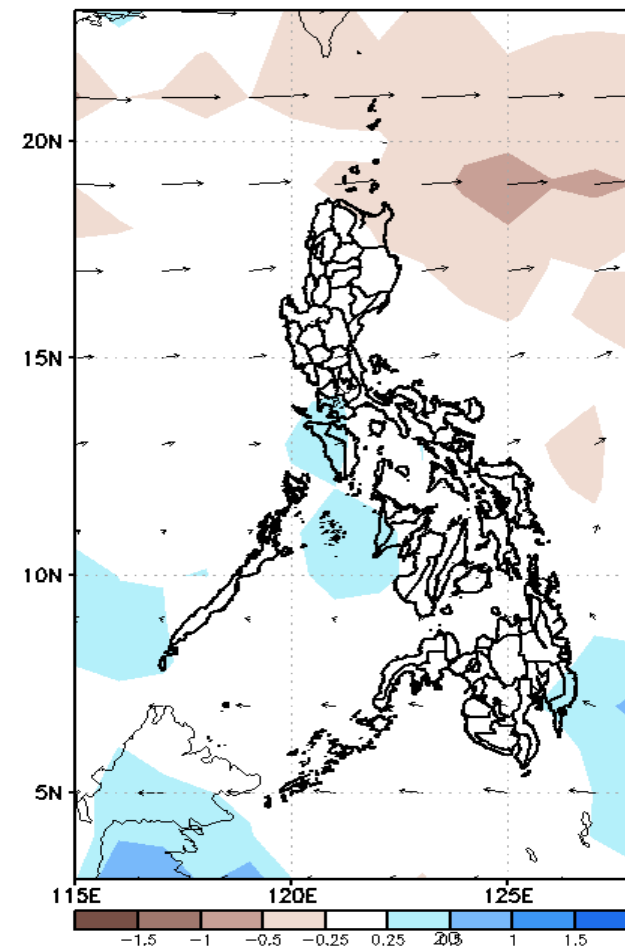
GEFS Week-2 850-hPa Divergence and Wind Anom
Valid: 20220411 - 20220417



GEFS Week-2 700-hPa Divergence and Wind Anom
Valid: 20220411 - 20220417



GEFS week-2 200-hPa Divergence and Wind Anom
Valid: 20220411 - 20220417

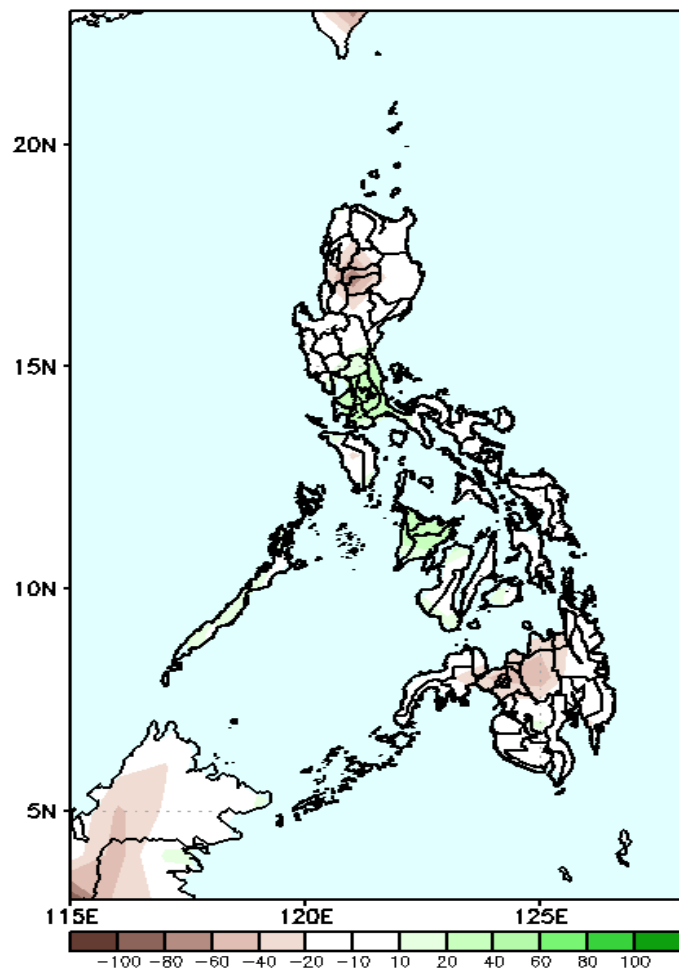


Upper and low level Divergence suggest less likelihood precipitation in most parts of the country. Easterlies affecting most parts of the country attributing to warmer temperatures during the forecast period.

Precipitation Anomaly and Exceedance Probability > 25/50 mm

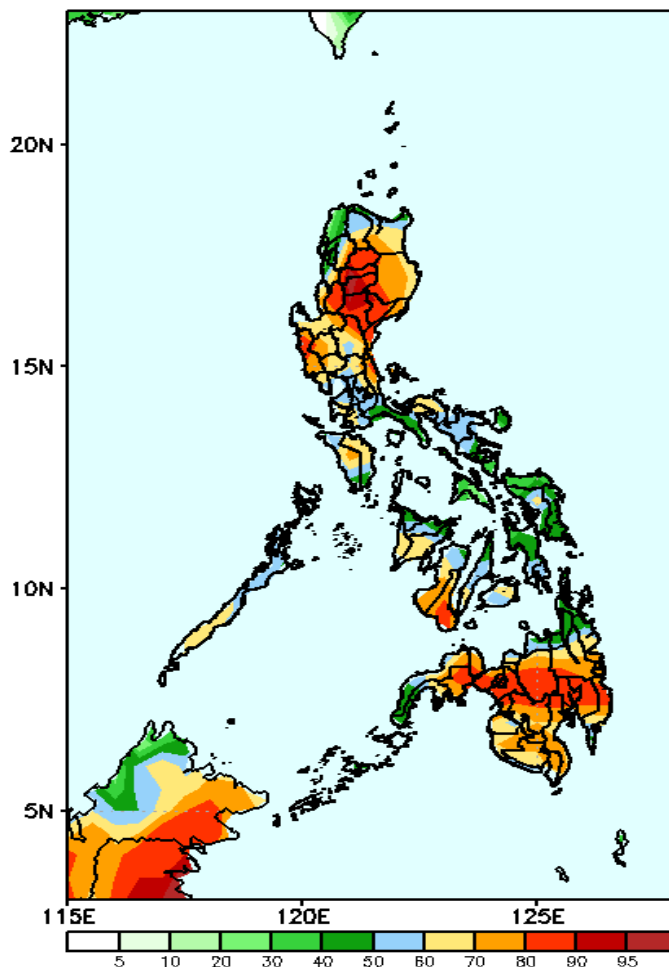
Week 2: Apr 11-17, 2022

GEFS Week-2 Precip Anomaly
Valid: 20220411 - 20220417



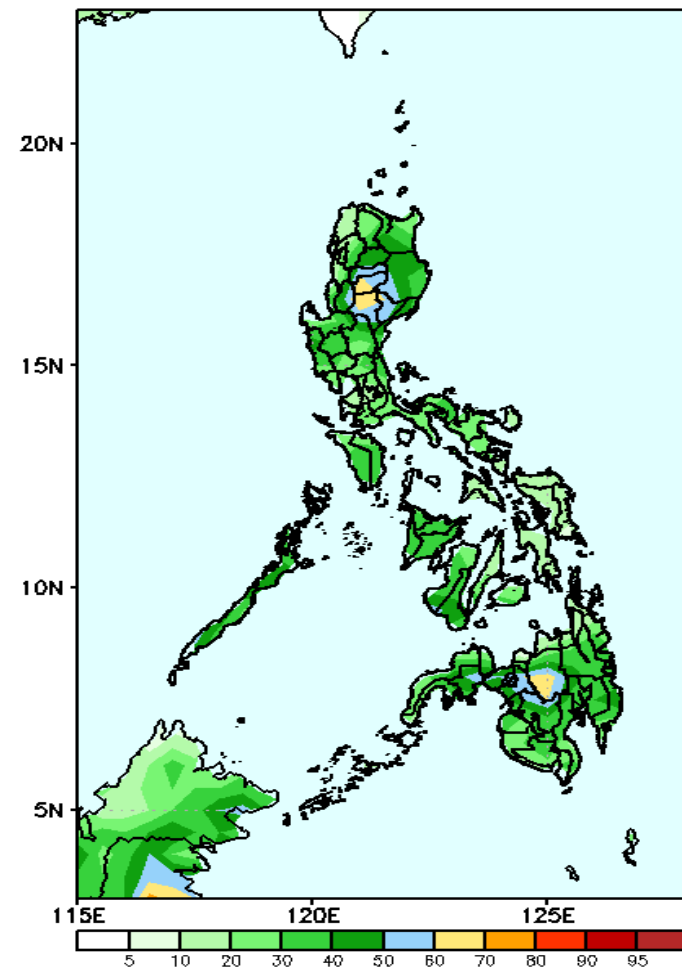
Rainfall deficit of 20-60mm in Cordillera Region and Northern Mindanao while 20-60mm increase of rainfall in CALABARZON and Panay Island during the forecast period.

GEFS Week-2 Exceedance Prob. > 25mm
Valid: 20220411 - 20220417



High probability of rainfall to exceed 25mm in most parts of the country except in Masbate, Catanduanes and Eastern Visayas during the forecast period.

GEFS Week-2 Exceedance Prob. > 50mm
Valid: 20220411 - 20220417

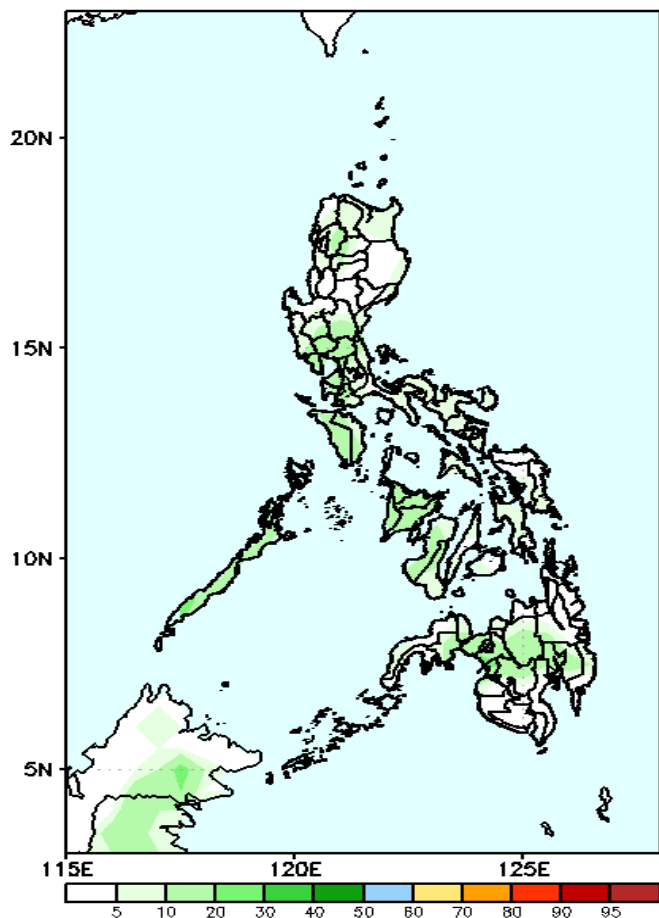


Low probability of rainfall to exceed 50mm in most parts of the country except in Mt. Province, Ifugao and Bukidnon where there is 60-70% chance during the forecast period.

Exceedance Probability > 100/150/200 mm

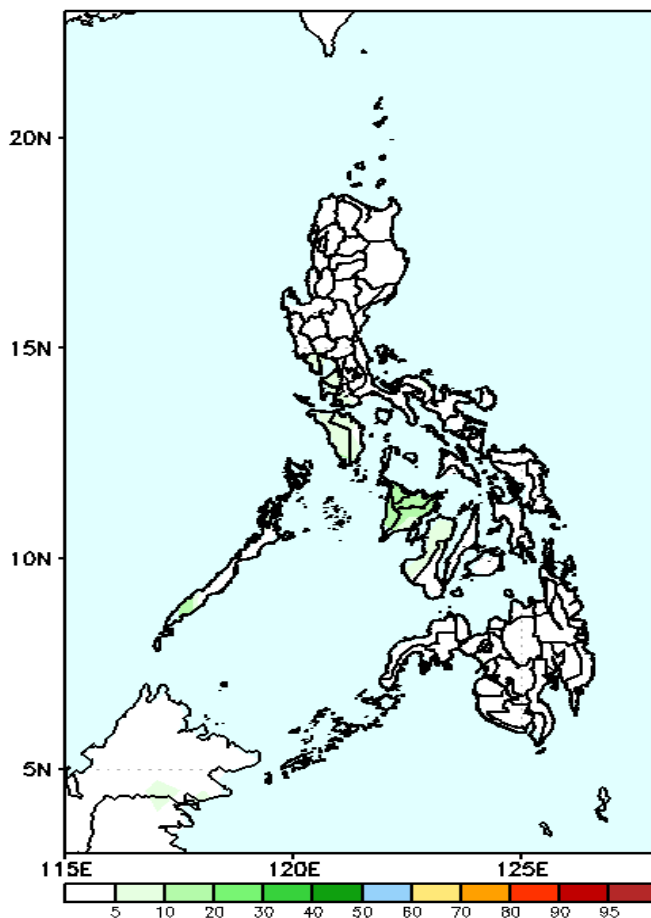
Week 2: Apr 11-17, 2022

GEFS Week-2 Exceedance Prob. > 100mm
Valid: 20220411 – 20220417



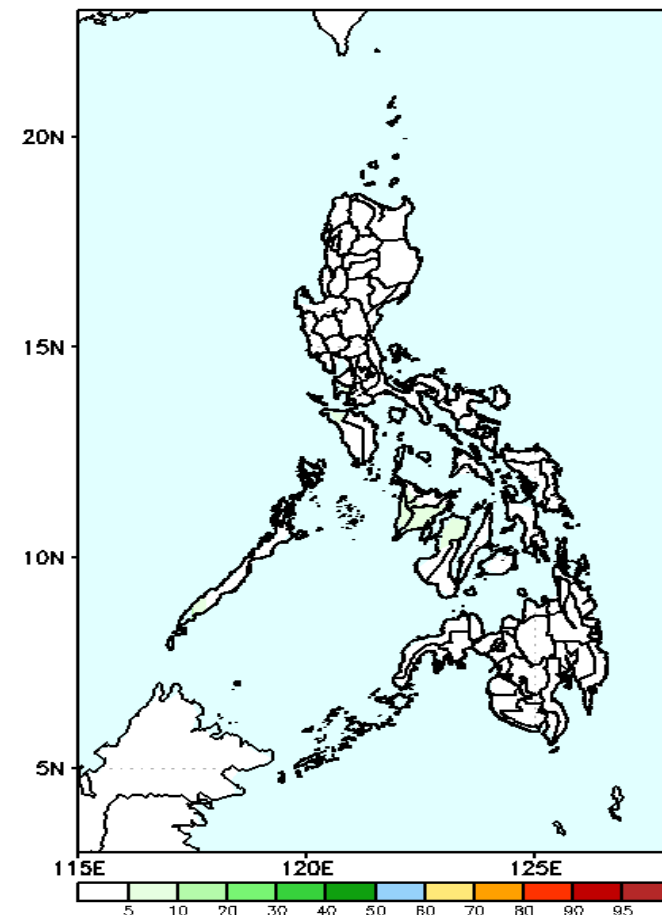
Low probability of rainfall to exceed 100mm in most parts of the country during the forecast period.

GEFS Week-2 Exceedance Prob. > 150mm
Valid: 20220411 – 20220417



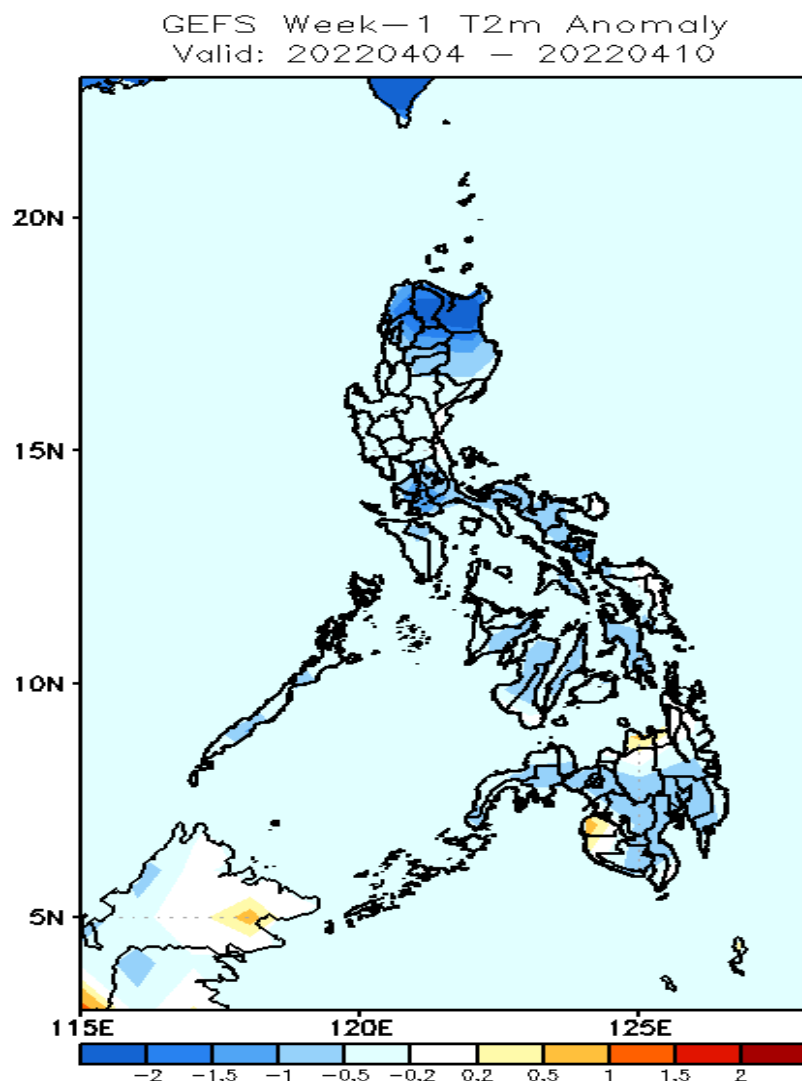
Low probability of rainfall to exceed 150mm in most parts of the country during the forecast period.

GEFS Week-2 Exceedance Prob. > 200mm
Valid: 20220411 – 20220417



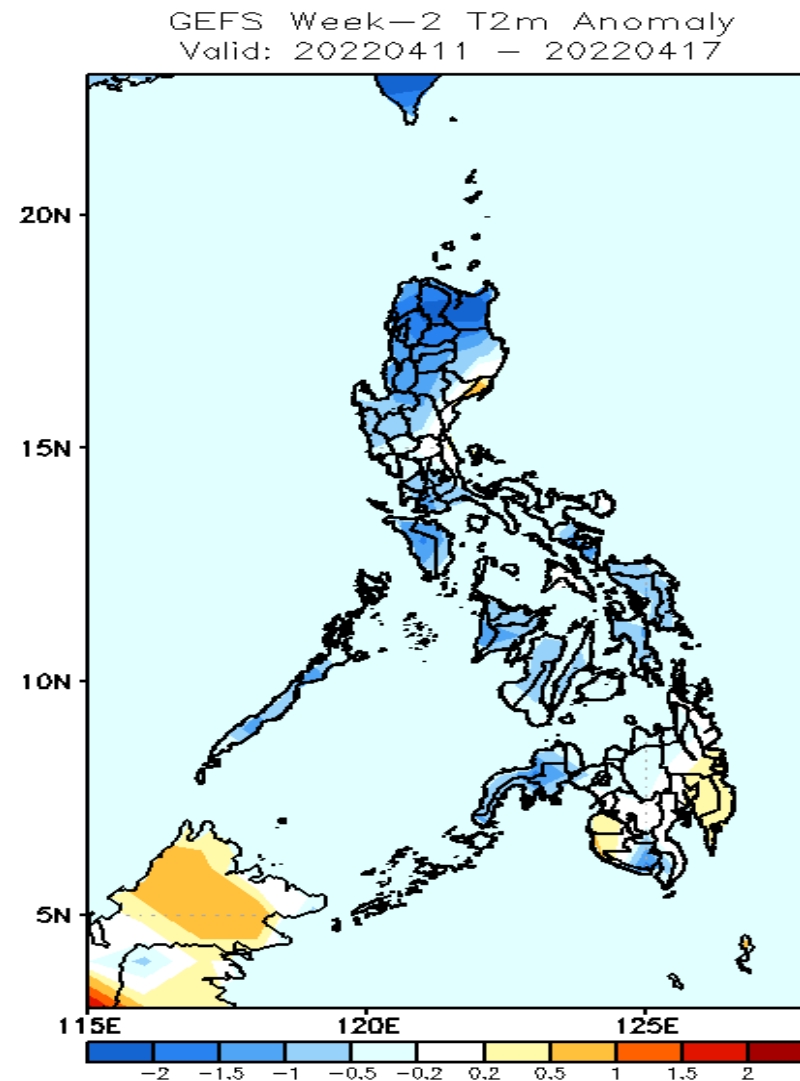
Low probability of rainfall to exceed 200mm in most parts of the country during the forecast period.

GEFS Week-1 & 2 Forecasts: T2m Anomaly



2m Temperature Week 1: Apr 04-10, 2022

Cooler than average surface air temperature will likely experience in Northern Luzon, CALABARZON and Sorsogon while average to slightly cooler for the rest of the country during the forecast period.



2m Temperature Week 2: Apr 11-17, 2022

Slightly cooler to cooler than average surface air temperature will likely experience in most parts of Luzon, Visayas, Zamboanga Peninsula and South Cotabato while average to slightly warmer for the rest of Mindanao during the forecast period.