



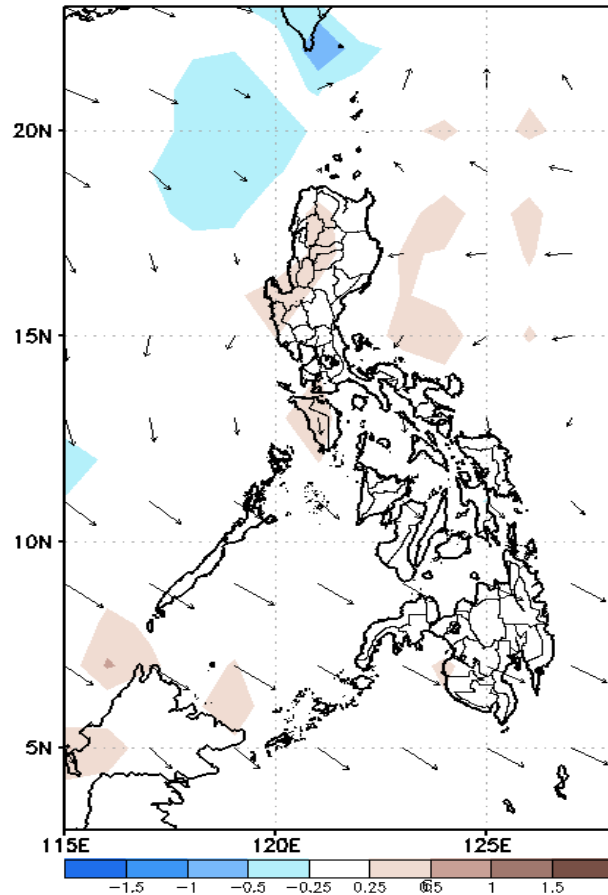
Week 1 & Week 2 Forecast for the Philippines using GEFS Model



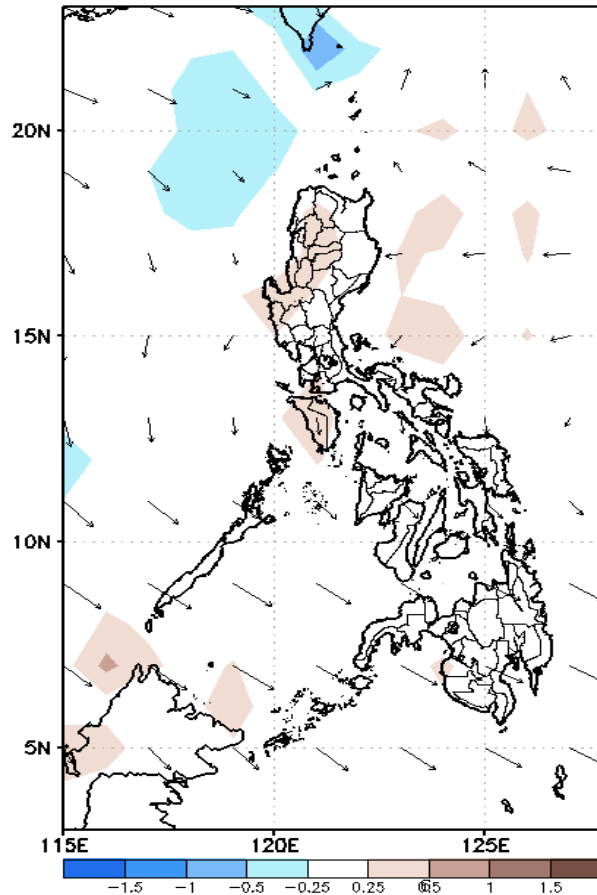
GEFS Week-1 Forecasts: Divergence & Wind Anomaly

Week 1: June 04-10, 2021

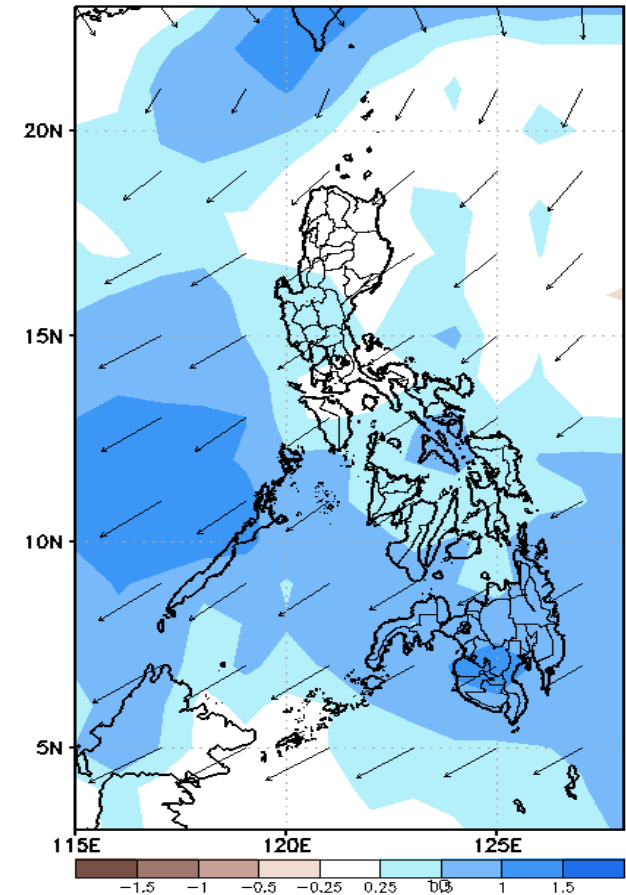
GEFS Week-1 850-hPa Divergence and Wind Anom
Valid: 20210604 - 20210610



GEFS Week-1 700-hPa Divergence and Wind Anom
Valid: 20210604 - 20210610



GEFS Week-1 200-hPa Divergence and Wind Anom
Valid: 20210604 - 20210610

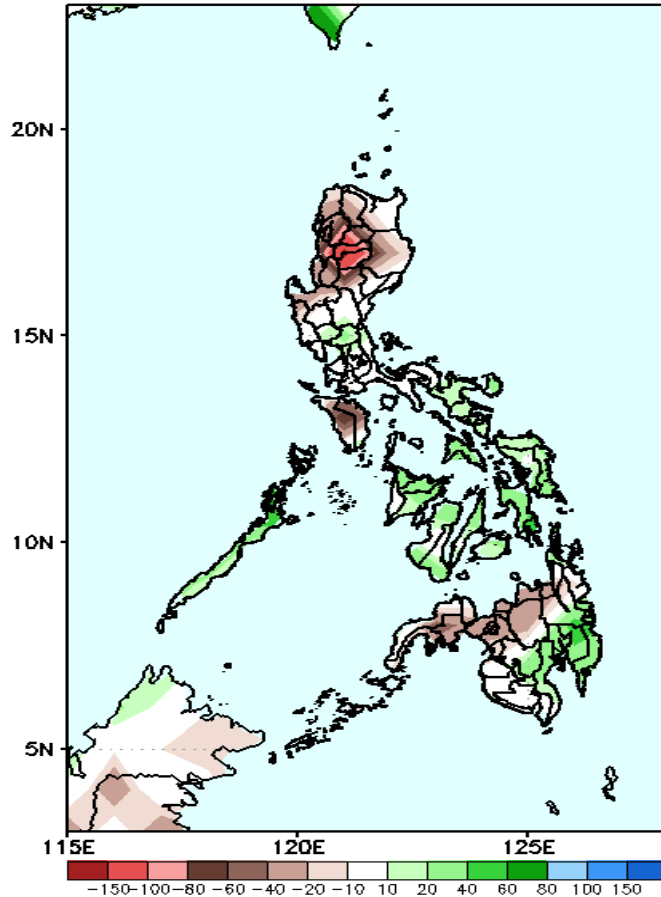


Upper and low level Divergence suggest likelihood of precipitation in most parts of the country except Northern Luzon. Southwest windflow affecting the western sections of the country while Easterlies affecting the rest of the country. Attributing to warmer temperature and higher heat index during the forecast period.

Precipitation Anomaly and Exceedance Probability > 25/50 mm

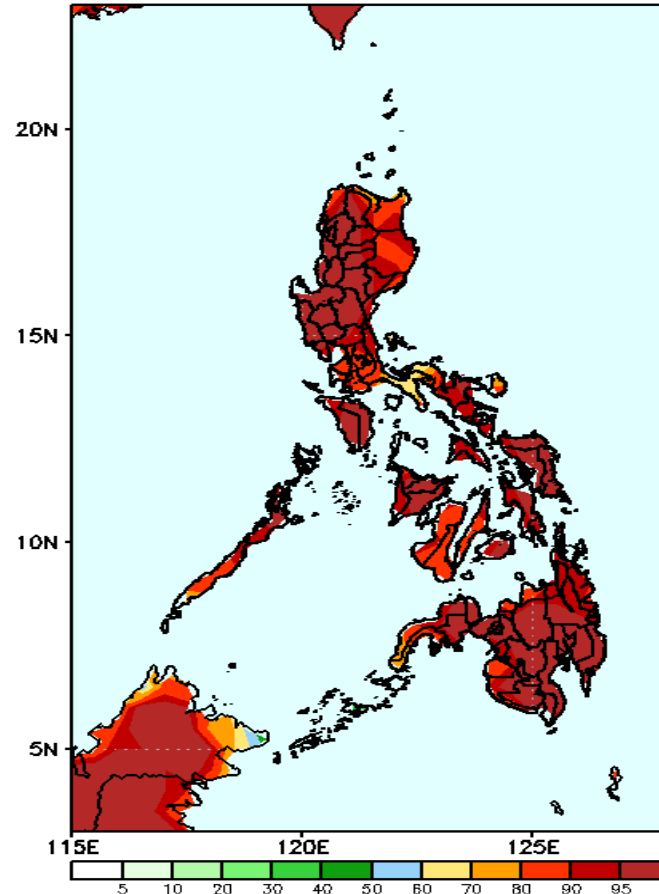
Week 1: June 04-10, 2021

GEFS Week-1 Precip. Anomaly
Valid: 20210604 - 20210610



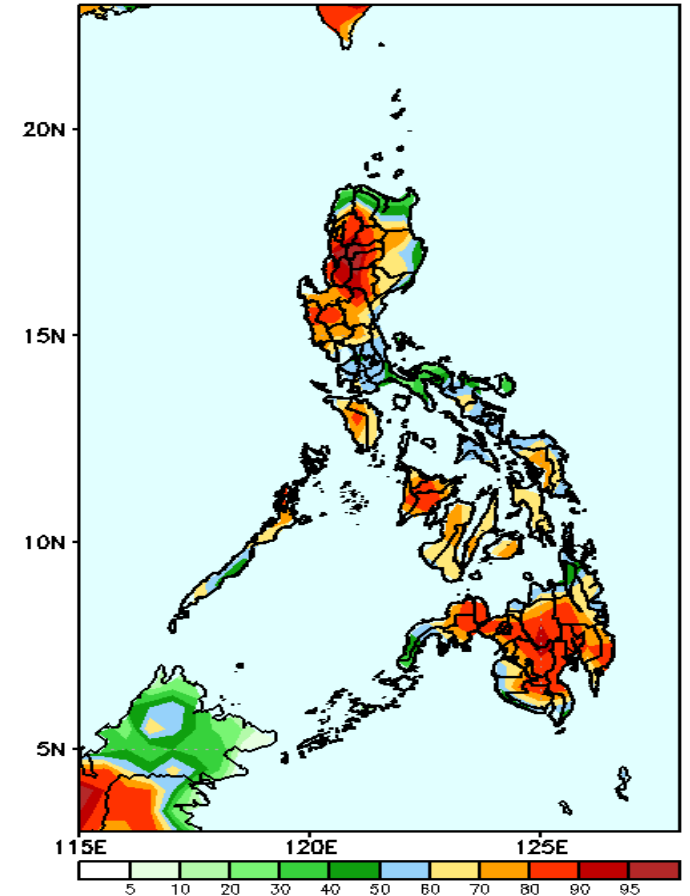
Rainfall deficit of 60-150mm is expected in most parts of Ilocos & Cordillera Region, Cagayan Valley, Mindoro and northern Mindanao while 40-80mm increase of rainfall for the rest of the country is more likely.

GEFS Week-1 Exceedance Prob. > 25mm
Valid: 20210604 - 20210610



High probability of rainfall to exceed 25mm in most parts of the country is expected during the forecast period.

GEFS Week-1 Exceedance Prob. > 50mm
Valid: 20210604 - 20210610

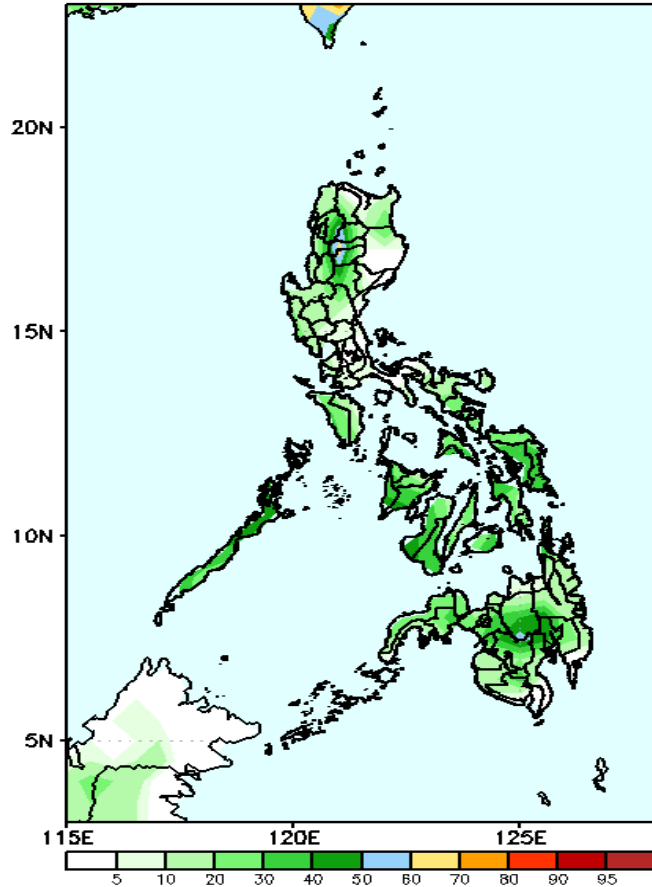


High probability of rainfall to exceed 50mm in most parts of the country except in Ilocos Norte, Apayao and Southern Luzon during the forecast period.

Exceedance Probability > 100/150/200 mm

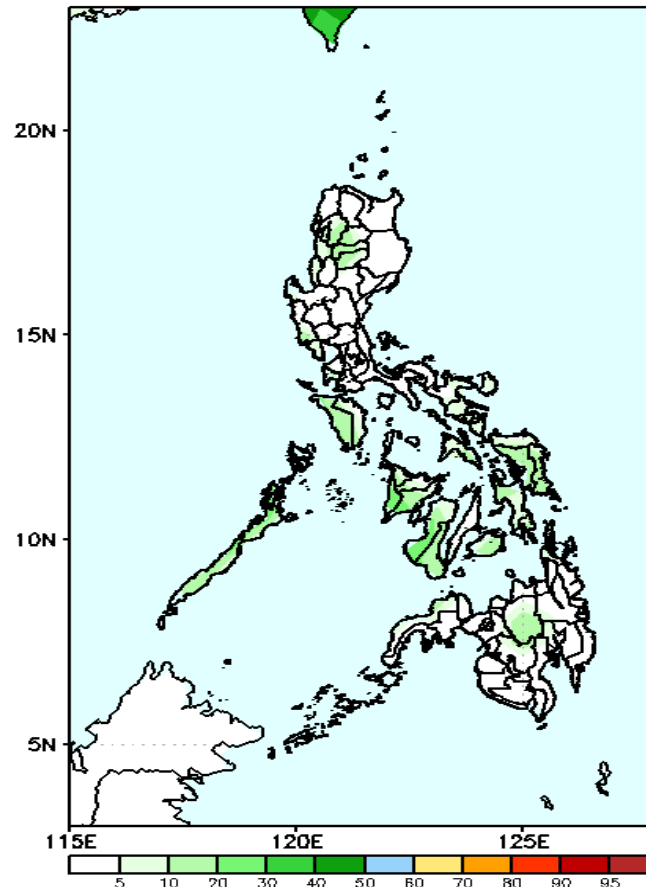
Week 1: June 04-10, 2021

GEFS Week-1 Exceedance Prob. > 100mm
Valid: 20210604 – 20210610



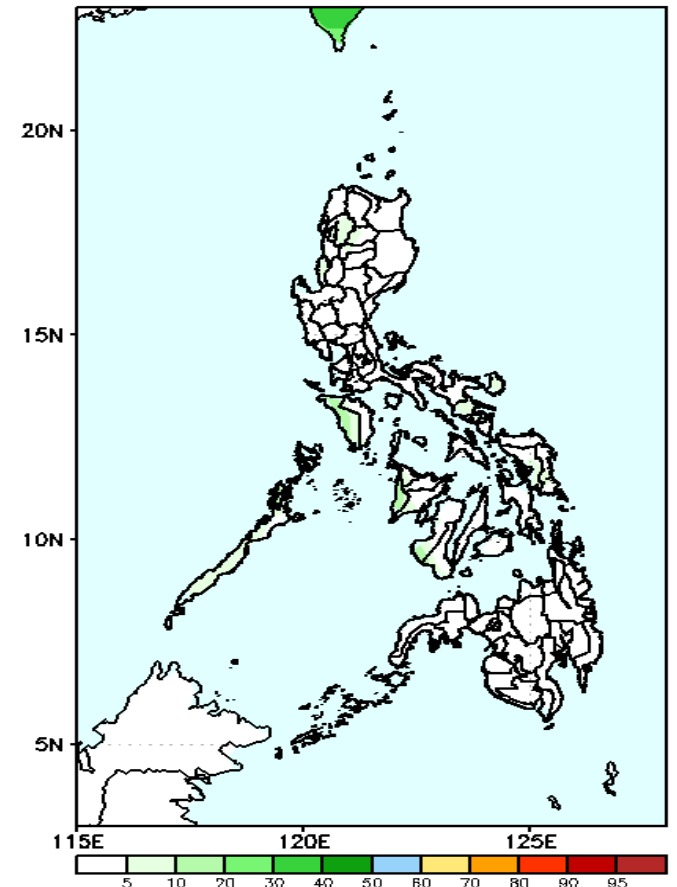
Less probability of rainfall to exceed 100mm in most parts of the country during the forecast period.

GEFS Week-1 Exceedance Prob. > 150mm
Valid: 20210604 – 20210610



Less probability of rainfall to exceed 150mm in most parts of the country during the forecast period.

GEFS Week-1 Exceedance Prob. > 200mm
Valid: 20210604 – 20210610



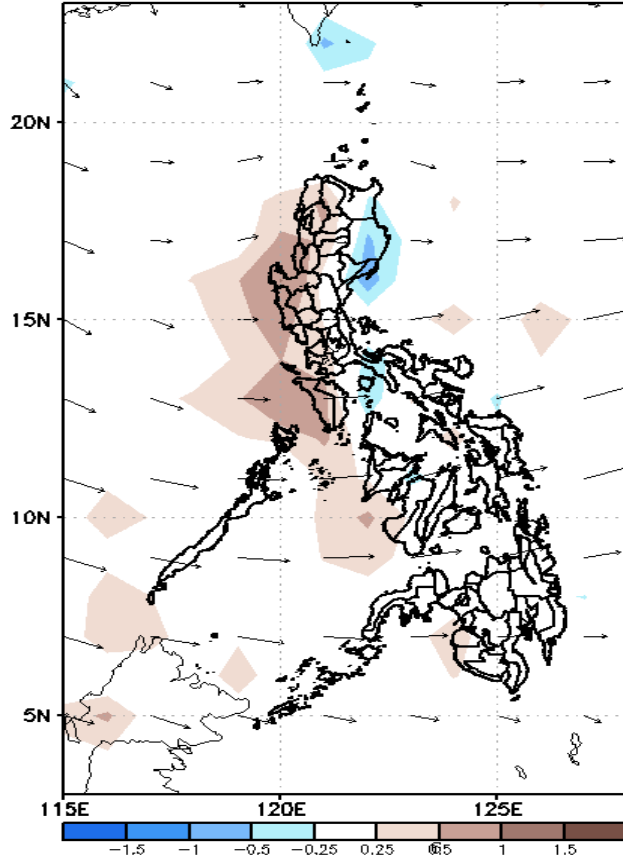
Less probability of rainfall to exceed 200mm in most parts of the country during the forecast period.



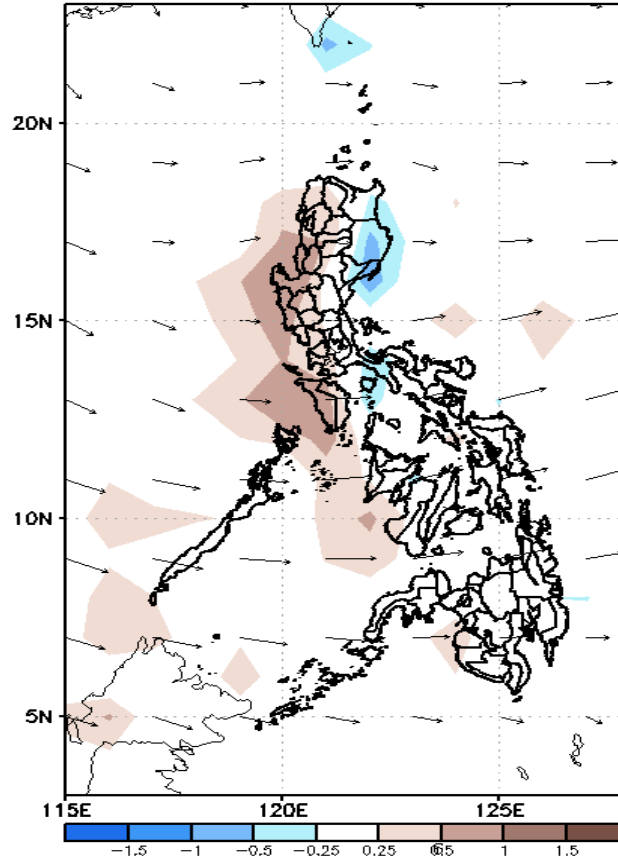
GEFS Week-2 Forecasts: Divergence & Wind Anomaly

Week 2: June 11-17, 2021

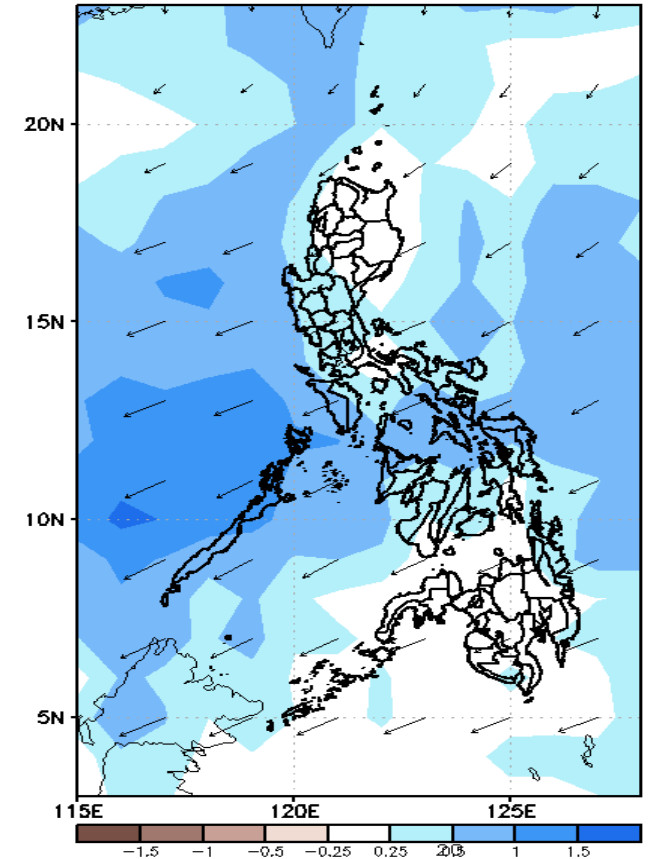
GEFS Week-2 850-hPa Divergence and Wind Anom
Valid: 20210611 - 20210617



GEFS Week-2 700-hPa Divergence and Wind Anom
Valid: 20210611 - 20210617



GEFS week-2 200-hPa Divergence and Wind Anom
Valid: 20210611 - 20210617

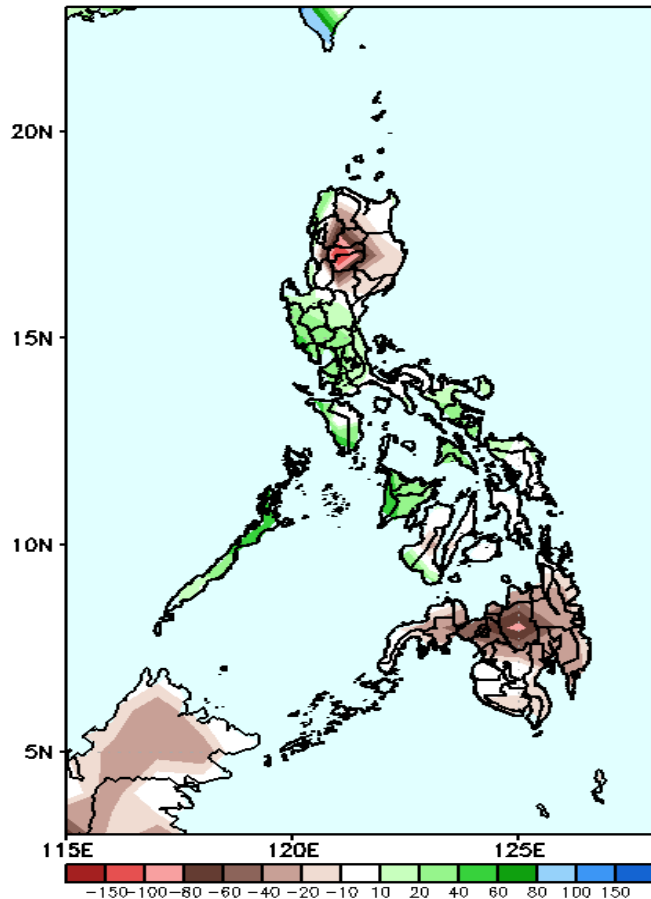


Upper and low level Divergence suggest likelihood of precipitation in most parts of Luzon and Visayas. Southwest windflow affecting most parts of the country. Attributing to humid environment and warmer temperature during the forecast period.

Precipitation Anomaly and Exceedance Probability > 25/50 mm

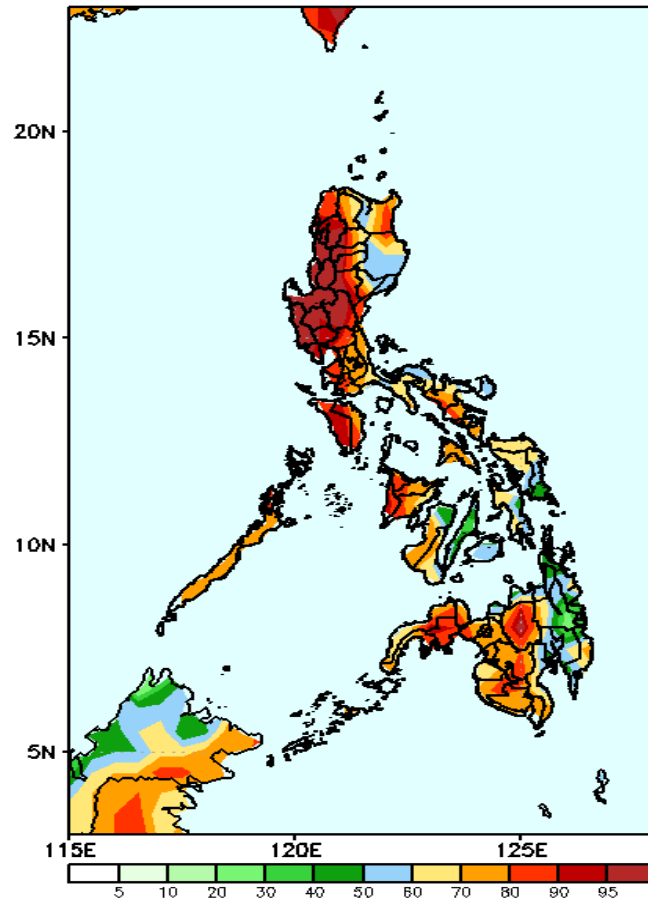
Week 2: June 11-17, 2021

GEFS Week-2 Precip Anomaly
Valid: 20210611 - 20210617



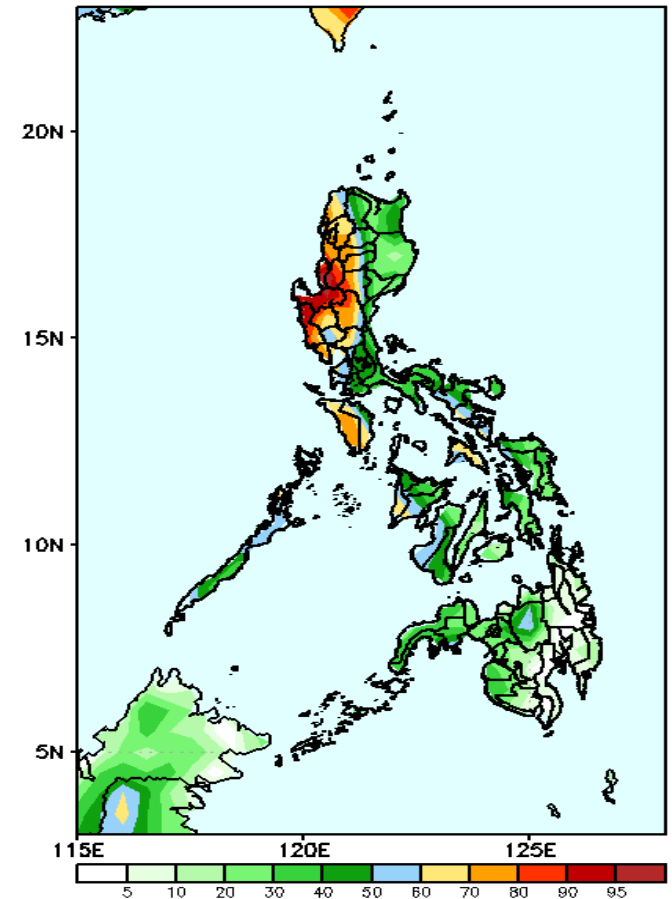
Increase of rainfall of 40-80mm in most parts of Central and Southern Luzon and Visayas while rainfall deficit of up to 150mm in Cordillera Region and 80-100mm in most parts of Mindanao.

GEFS Week-2 Exceedance Prob. > 25mm
Valid: 20210611 - 20210617



High probability of rainfall to exceed 25mm in most parts of the country except in Central Visayas and eastern Mindanao during the forecast period.

GEFS Week-2 Exceedance Prob. > 50mm
Valid: 20210611 - 20210617



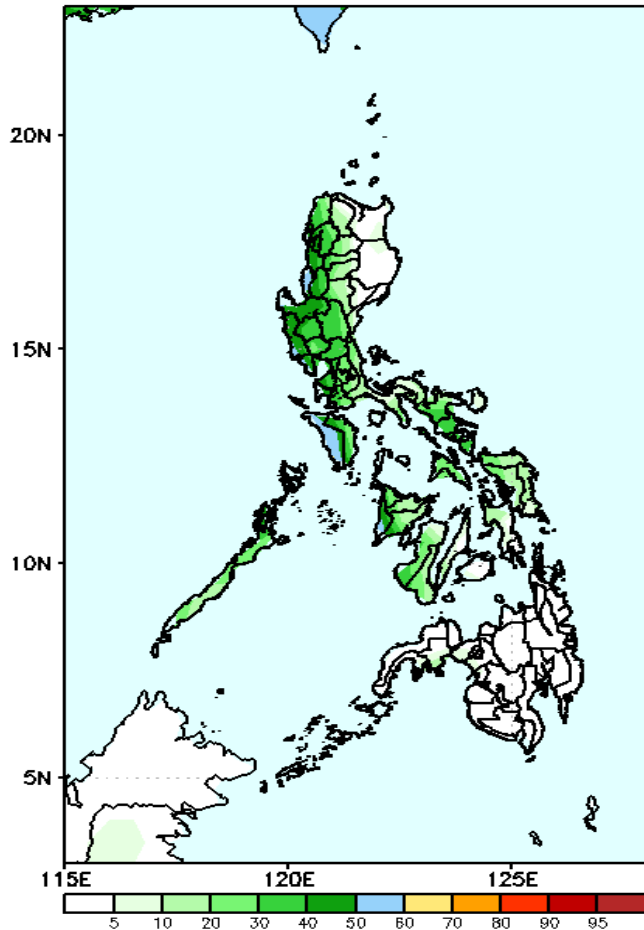
High probability of rainfall to exceed 50mm in most parts of western Luzon and Mindoro while less likely for the rest of the country during the forecast period.



Exceedance Probability > 100/150/200 mm

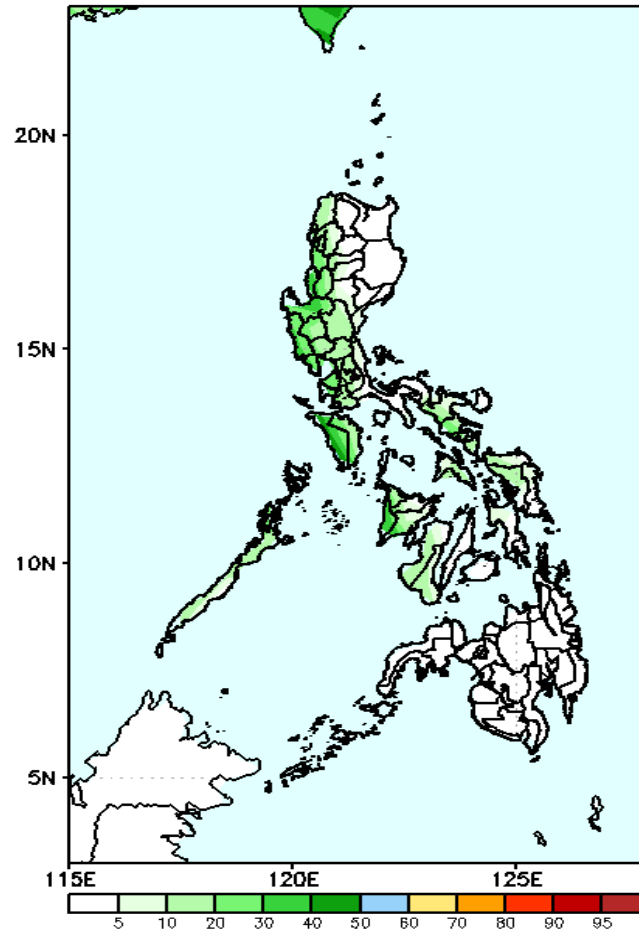
Week 2: June 11-17, 2021

GEFS Week-2 Exceedance Prob. > 100mm
Valid: 20210611 – 20210617



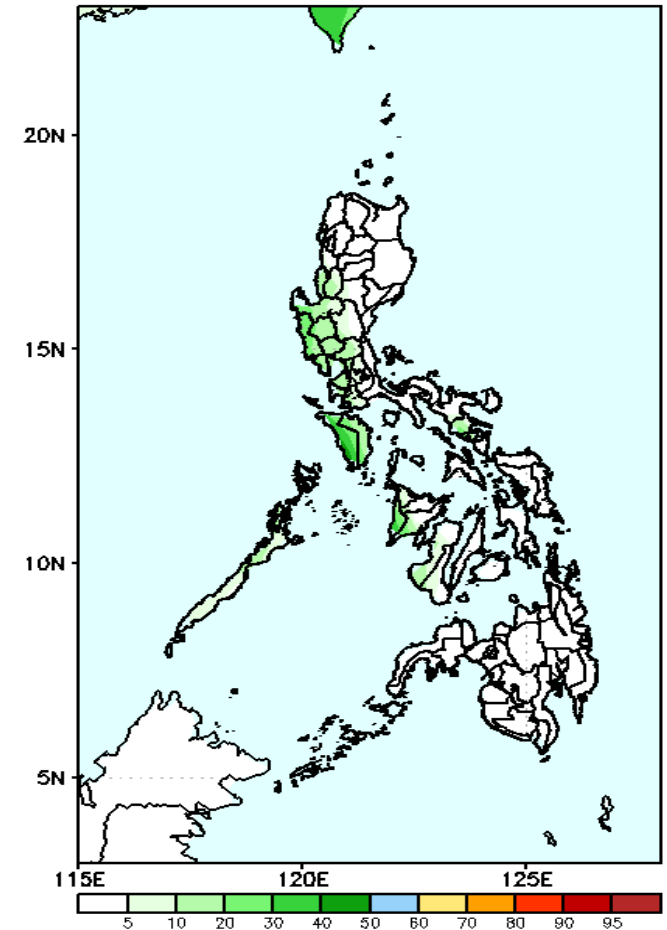
40-60% probability of rainfall to exceed 100mm in most parts of Luzon and Visayas while less likely in Mindanao during the forecast period.

GEFS Week-2 Exceedance Prob. > 150mm
Valid: 20210611 – 20210617



Less probability of rainfall to exceed 150mm in most parts of the country during the forecast period.

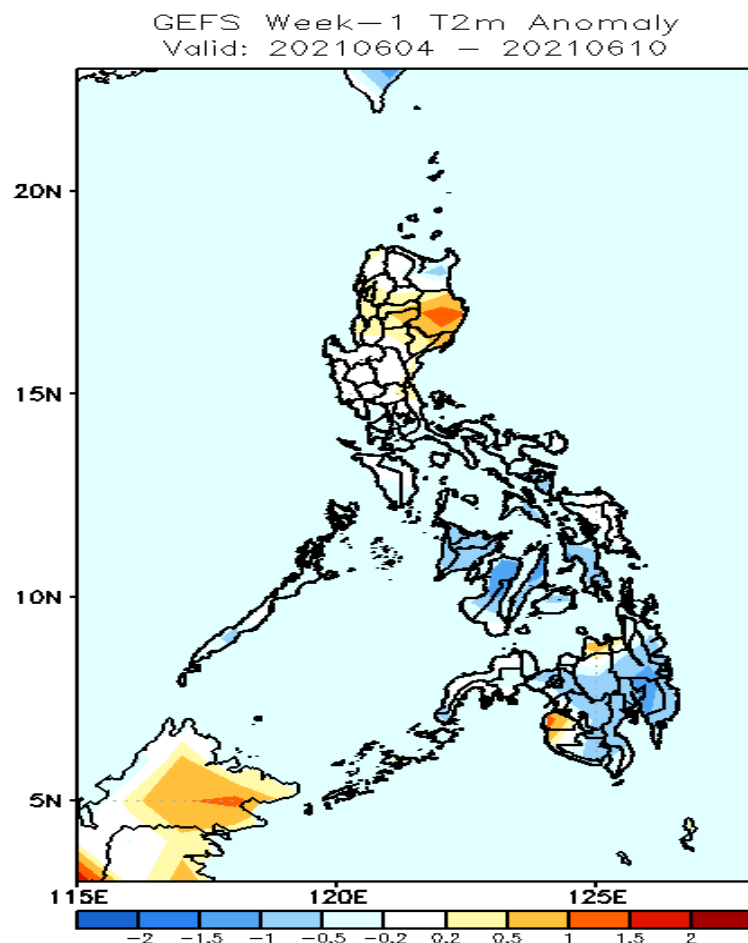
GEFS Week-2 Exceedance Prob. > 200mm
Valid: 20210611 – 20210617



Less probability of rainfall to exceed 200mm in most parts of the country during the forecast period.

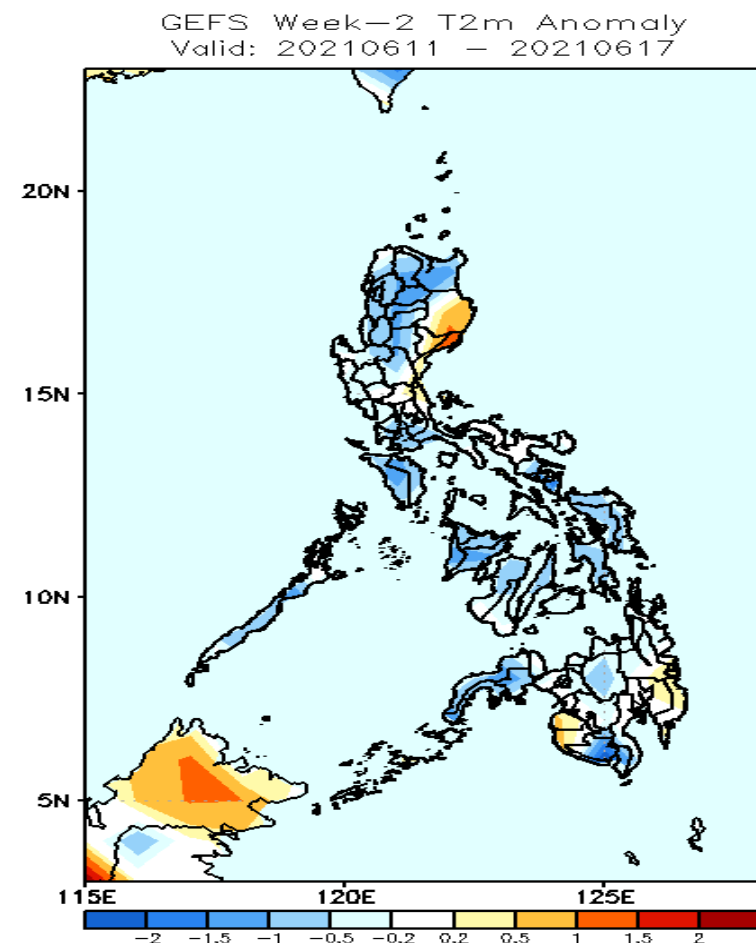


GEFS Week-1 & 2 Forecasts: T2m Anomaly



2m Temperature Week 1: June 04-10, 2021

Slightly warmer to warmer than average surface air temperature will likely experience in Isabela, Maguindanao, and Misamis Oriental while average to slightly cooler than average temperature for the rest of the country during the forecast period.



2m Temperature Week 2: June 11-17, 2021

Slightly cooler to cooler than average surface air temperature will likely experience in most parts of country except with patches of slightly warmer than average temperature in Isabela during the forecast period.

