



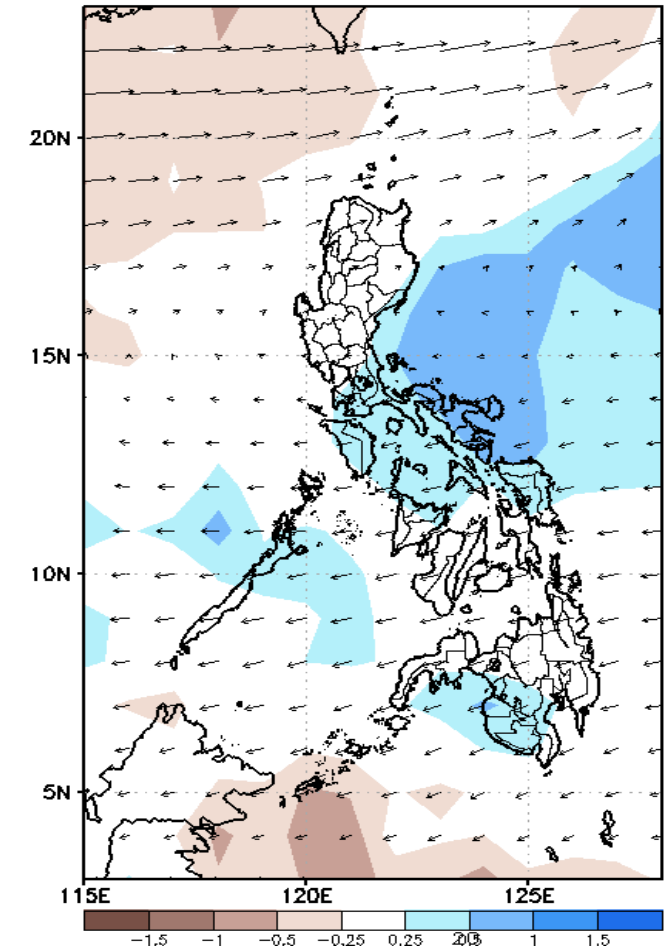
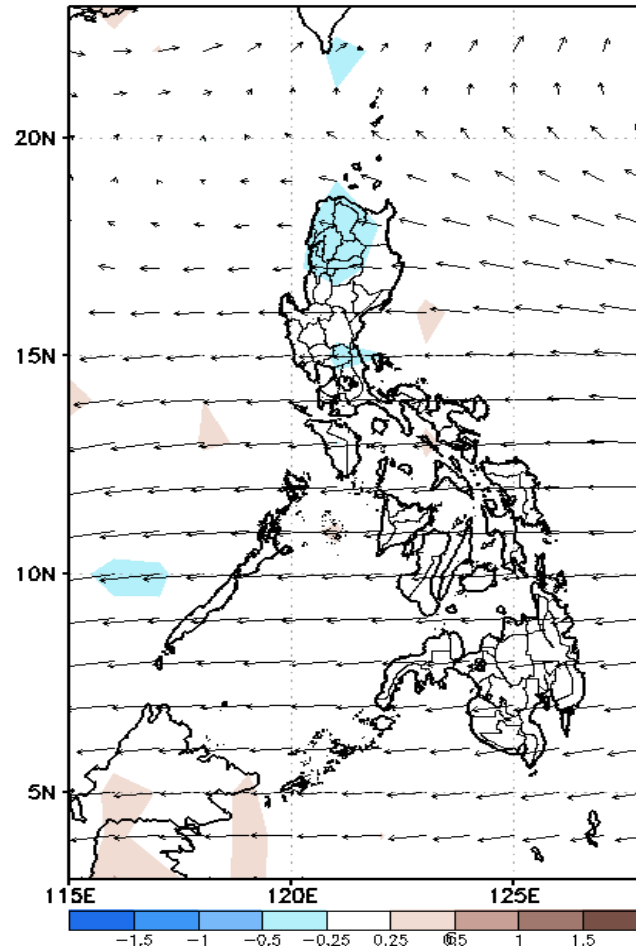
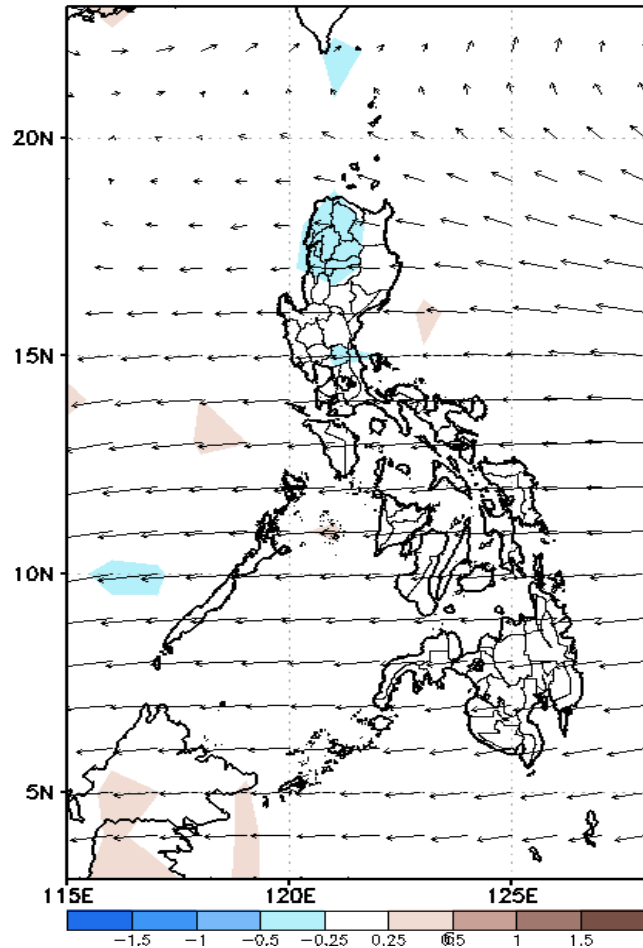
Week 1 & Week 2 Forecast for the Philippines using GEFS Model



GEFS Week-1 Forecasts: Wind Anomaly Forecast

Week 1: Nov 04-10, 2022

GEFS Week-1 850-hPa Divergence and Wind Anom
Valid: 20221104 - 20221110



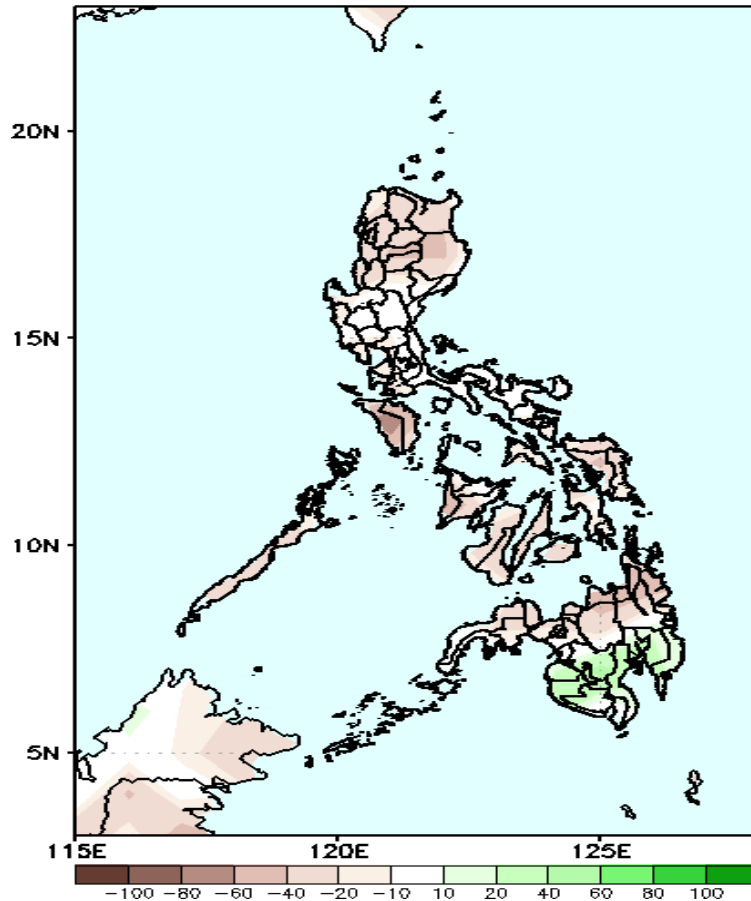
Easterly to Southeasterly windflow will likely affect most parts of the country during the forecast period.



Precipitation Anomaly and Exceedance Probability > 25/50 mm

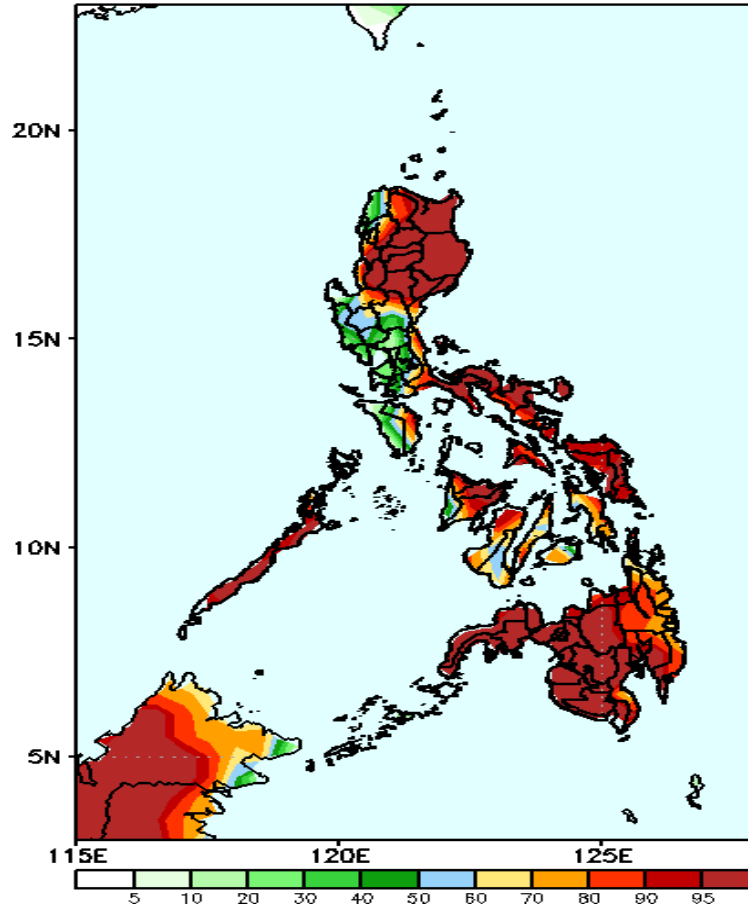
Week 1: Nov 04-10, 2022

GEFS Week-1 Precip Anomaly
Valid: 20221104 - 20221110



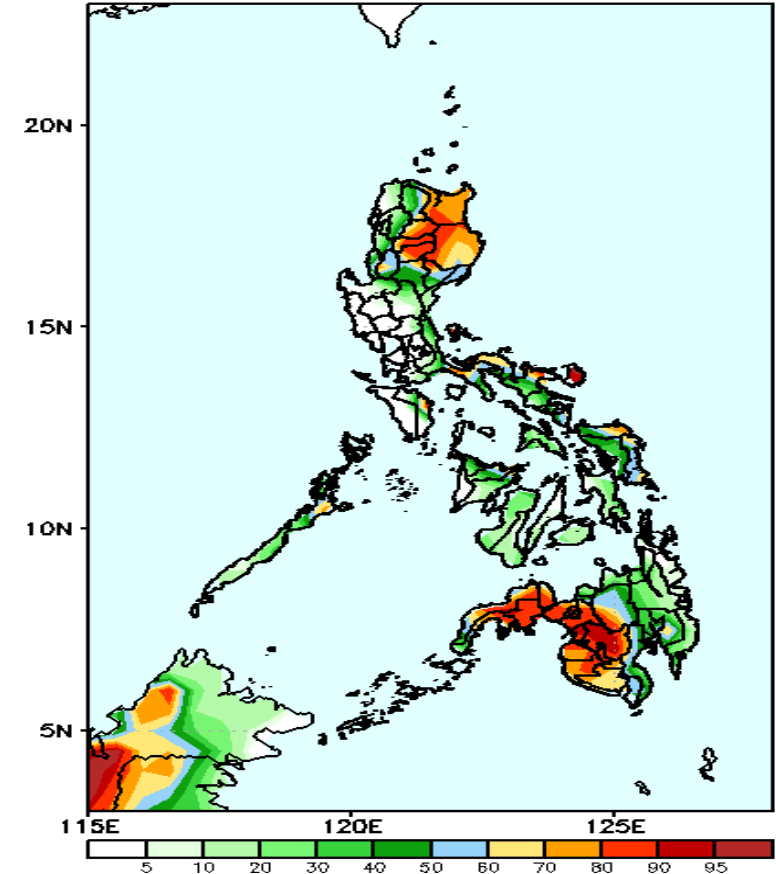
Rainfall deficit of 40-80mm is expected in most parts of the country except in southern Mindanao where increase of rainfall of 20-60mm is most likely during the forecast period.

GEFS Week-1 Exceedance Prob. > 25mm
Valid: 20221104 - 20221110



High probability of rainfall to exceed 25mm in most parts of the country during the forecast period.

GEFS Week-1 Exceedance Prob. > 50mm
Valid: 20221104 - 20221110

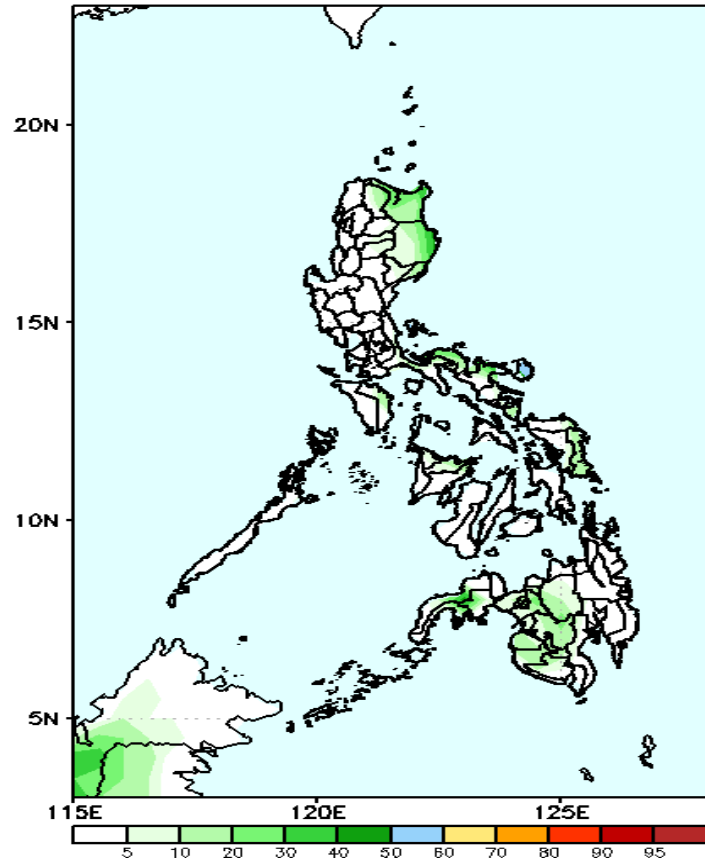


High probability of rainfall to exceed 50mm in most parts of Cagayan, Isabela, Kalinga, Mt. Province, Ifugao, some areas in Southern Luzon and eastern Visayas and most parts of Western Mindanao including Zamboanga Peninsula while less likely for the rest of the country during the forecast period.

Exceedance Probability > 100/150/200 mm

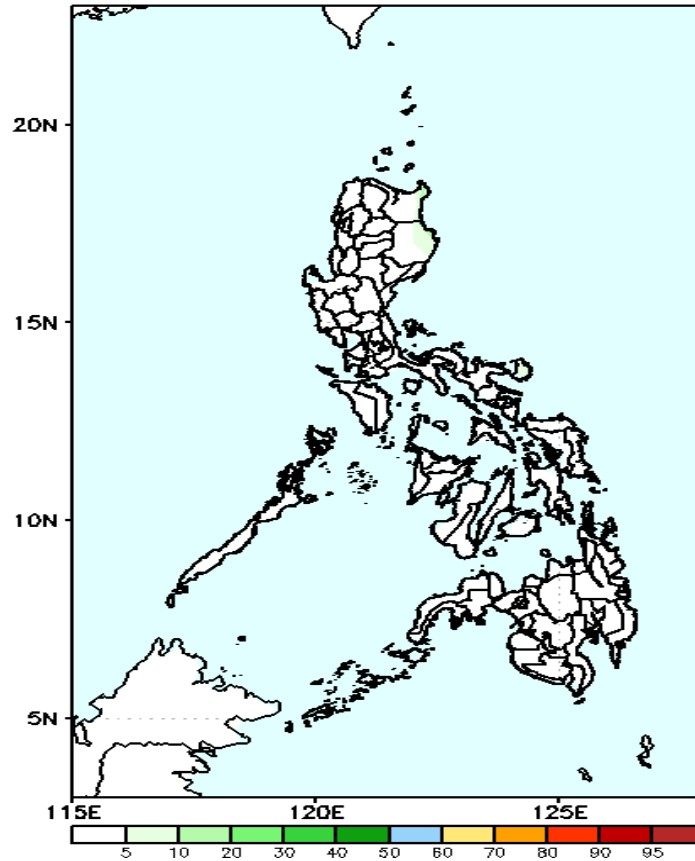
Week 1: Nov 04-10, 2022

GEFS Week-1 Exceedance Prob. > 100mm
Valid: 20221104 – 20221110



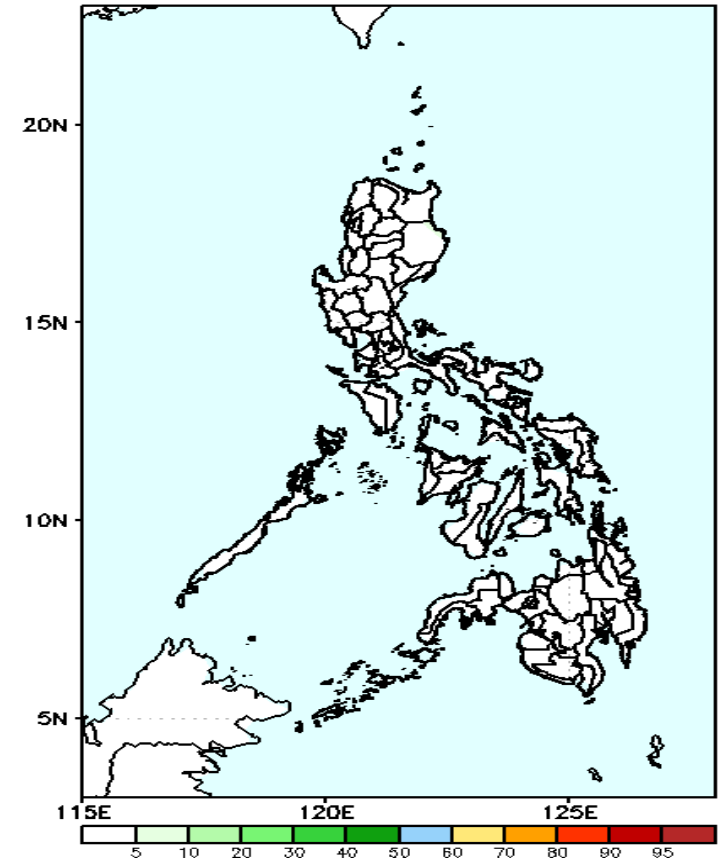
Low probability of rainfall to exceed 100mm in most parts of the country during the forecast period.

GEFS Week-1 Exceedance Prob. > 150mm
Valid: 20221104 – 20221110



Low probability of rainfall to exceed 150mm in most parts of the country during the forecast period.

GEFS Week-1 Exceedance Prob. > 200mm
Valid: 20221104 – 20221110

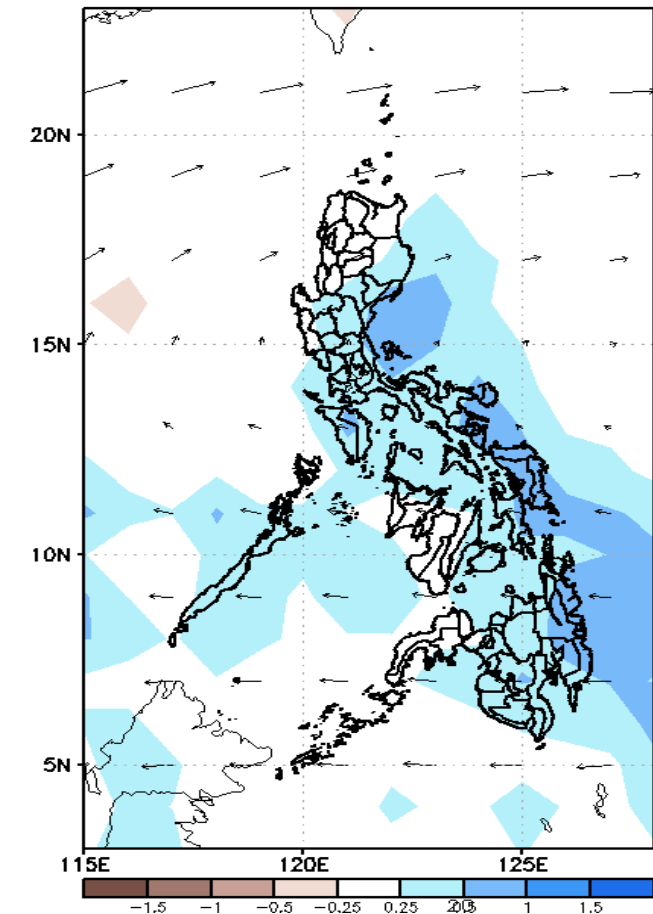
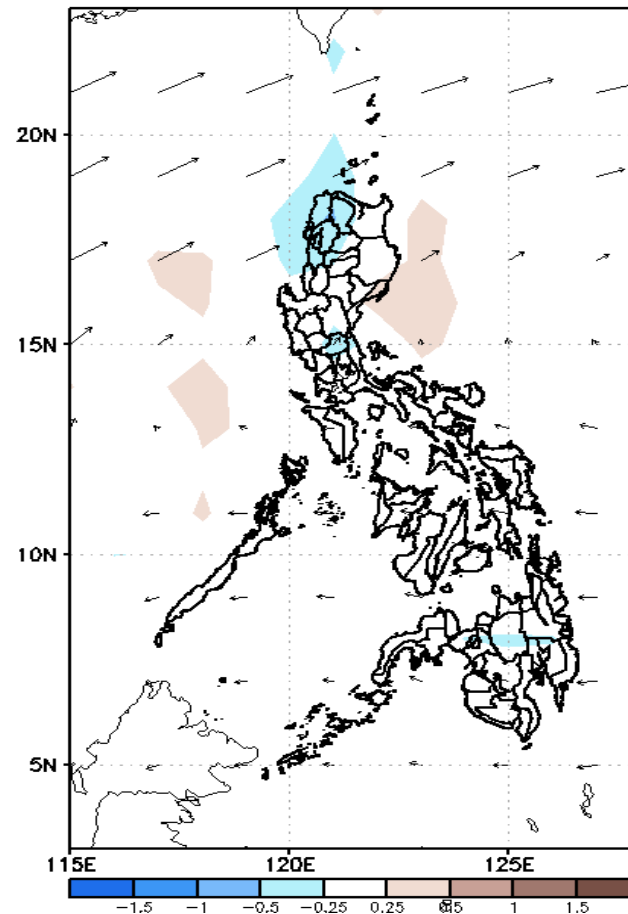
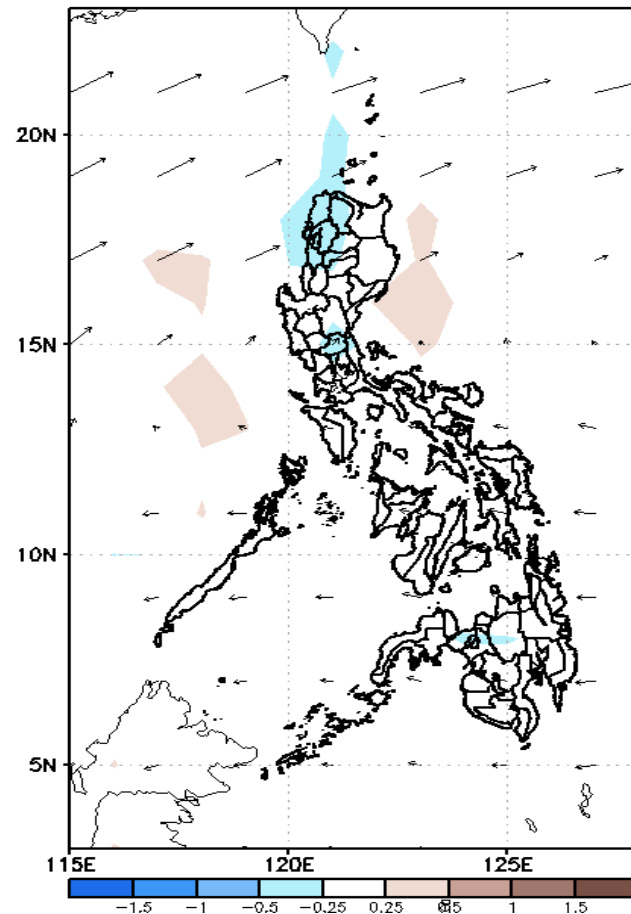


Low probability of rainfall to exceed 200mm in most parts of the country during the forecast period.

GEFS Week-2 Forecasts: Wind Anomaly Forecast

Week 2: Nov 11 - 17, 2022

GEFS Week-2 850-hPa Divergence and Wind Anom
Valid: 20221111 - 20221117

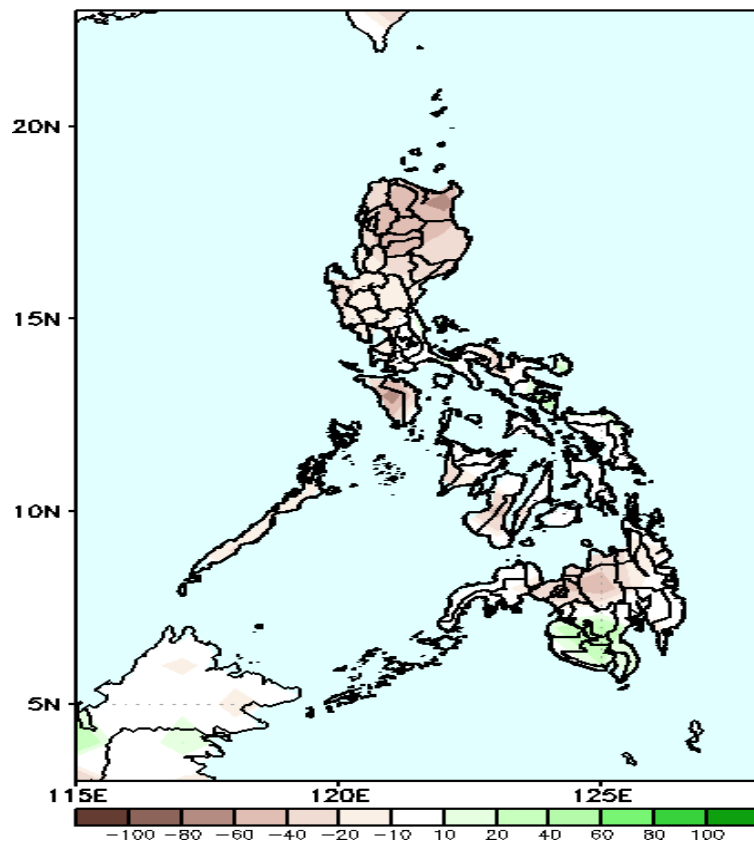


Westerly windflow will likely affect Northern Luzon while easterlies is forecasted to affect the rest of the country during the forecast period.

Precipitation Anomaly and Exceedance Probability > 25/50 mm

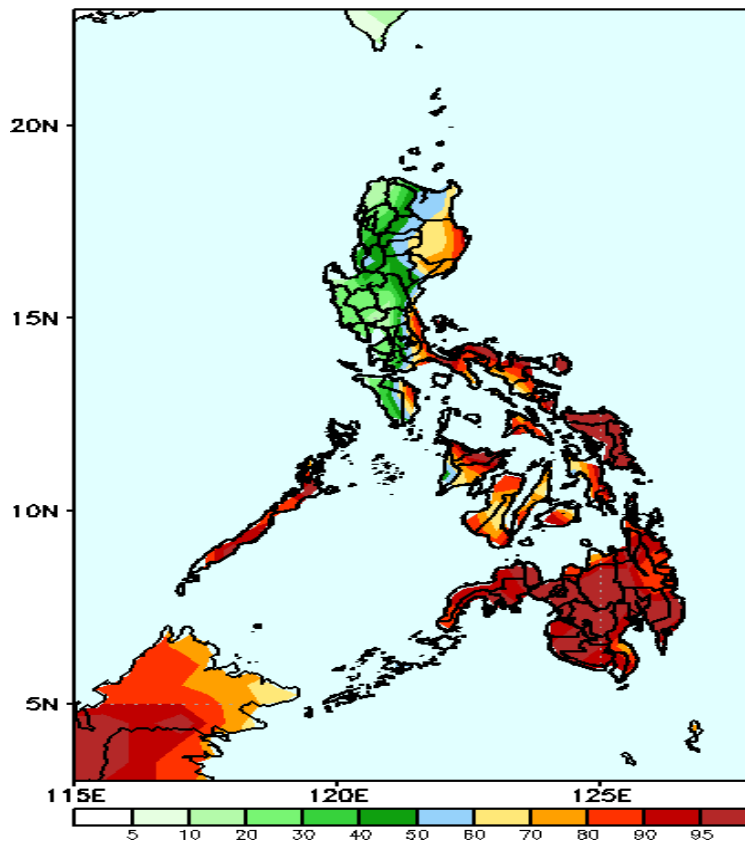
Week 2: Nov 11 - 17, 2022

GEFS Week-2 Precip Anomaly
Valid: 20221111 - 20221117



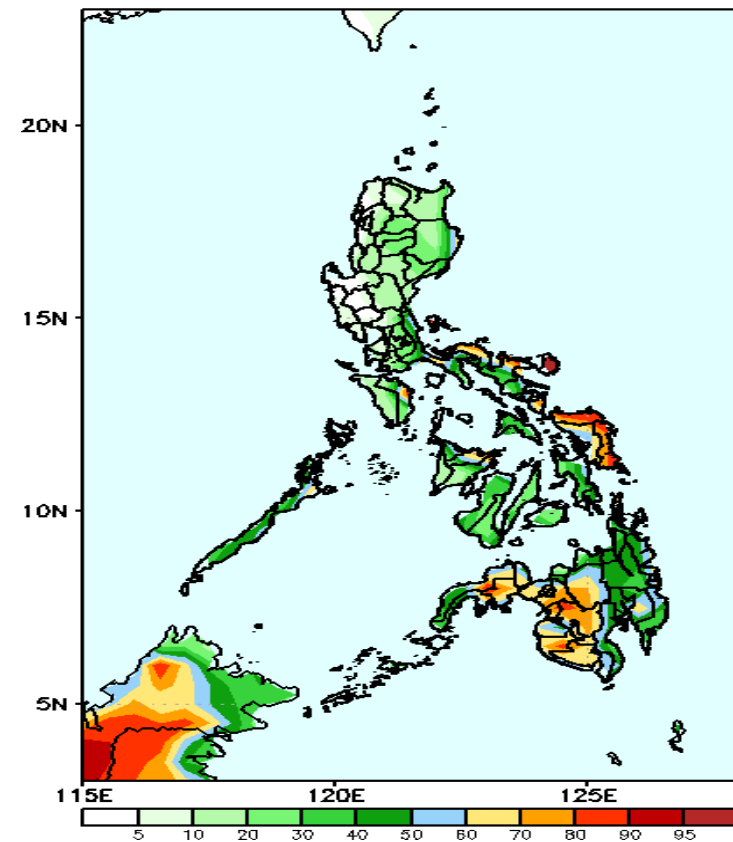
Rainfall deficit of 20-80mm is expected in most parts of the country except in southwestern parts of Mindanao during the forecast period.

GEFS Week-2 Exceedance Prob. > 25mm
Valid: 20221111 - 20221117



High probability of rainfall to exceed 25mm in most parts of eastern Luzon, Oriental Mindoro, in Visayas and Mindanao while less likely for the rest of Luzon during the forecast period.

GEFS Week-2 Exceedance Prob. > 50mm
Valid: 20221111 - 20221117

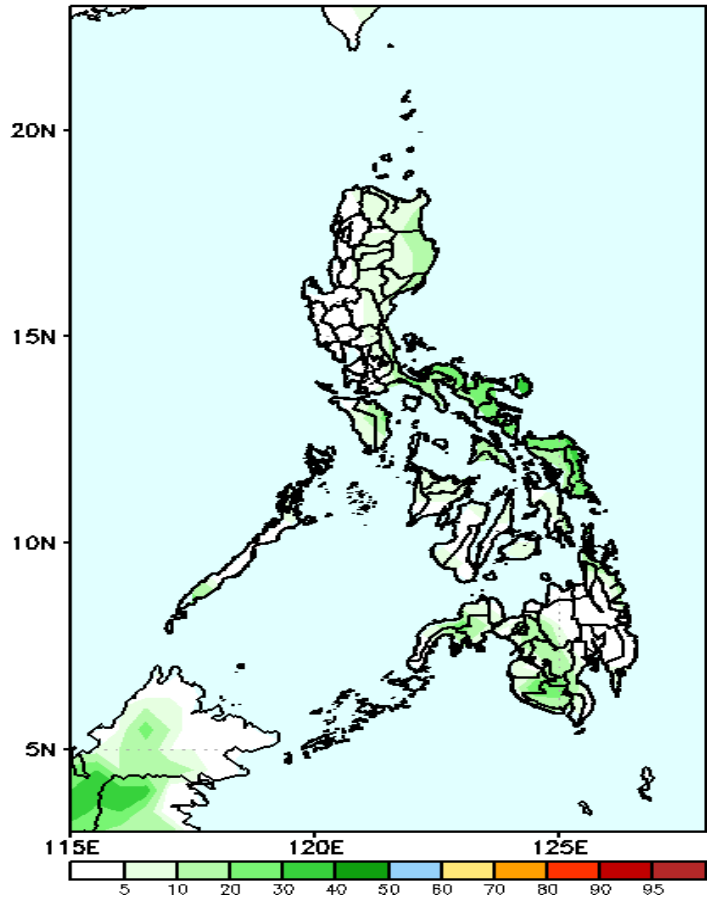


High probability of rainfall to exceed 50mm in some areas in Bicol region, Samar provinces and most parts of Western Mindanao including Zamboanga Peninsula while less likely for the rest of the country during the forecast period.

Exceedance Probability > 100/150/200 mm

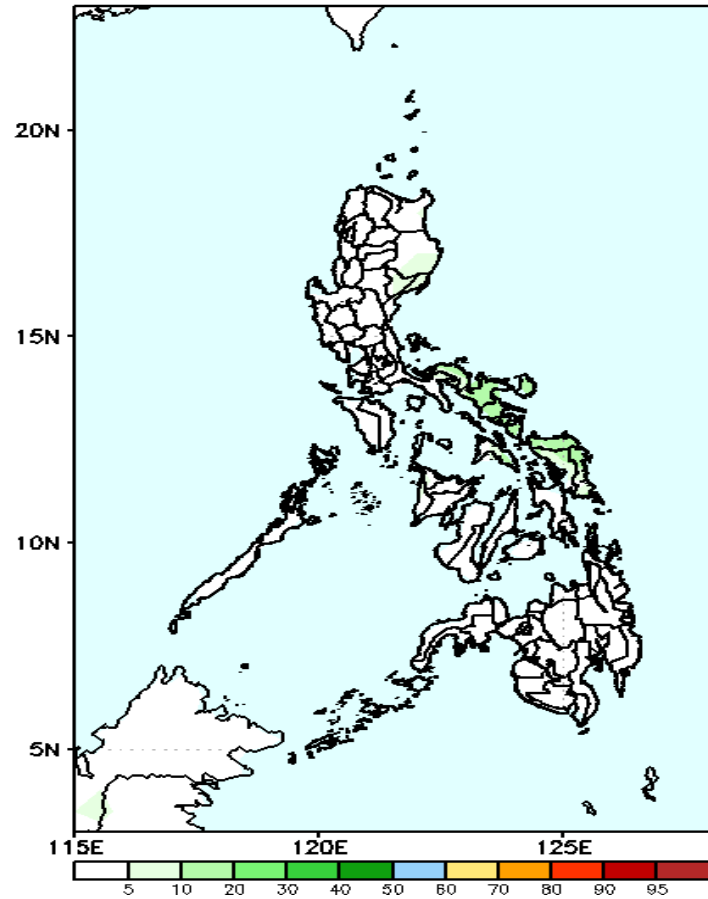
Week 2: Nov 11 - 17, 2022

GEFS Week-2 Exceedance Prob. > 100mm
Valid: 20221111 - 20221117



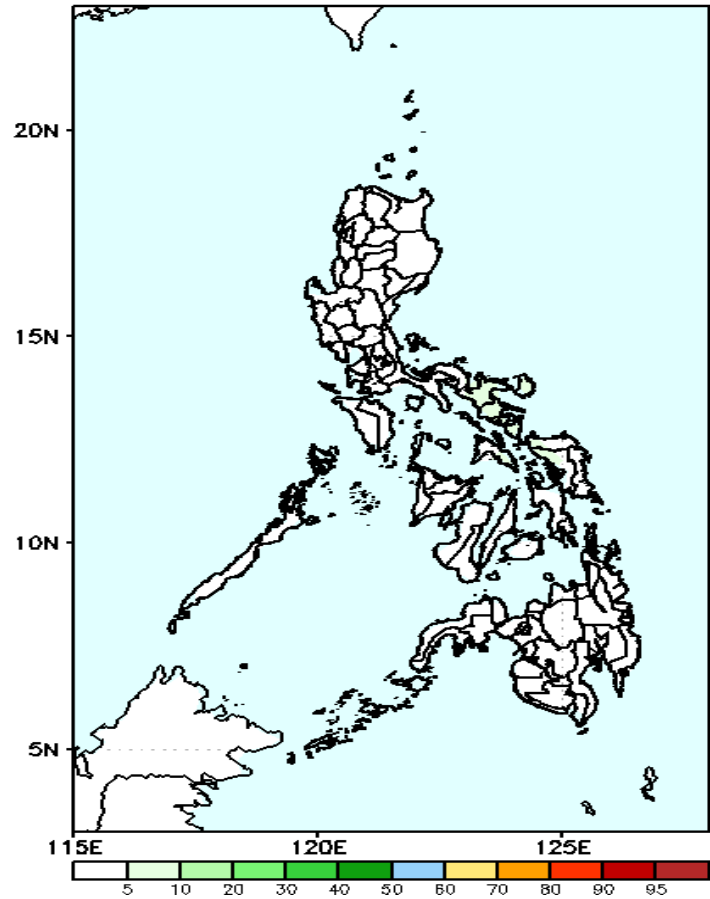
Low probability of rainfall to exceed 100mm in most parts of the country during the forecast period.

GEFS Week-2 Exceedance Prob. > 150mm
Valid: 20221111 - 20221117



Low probability of rainfall to exceed 150mm in most parts of the country during the forecast period.

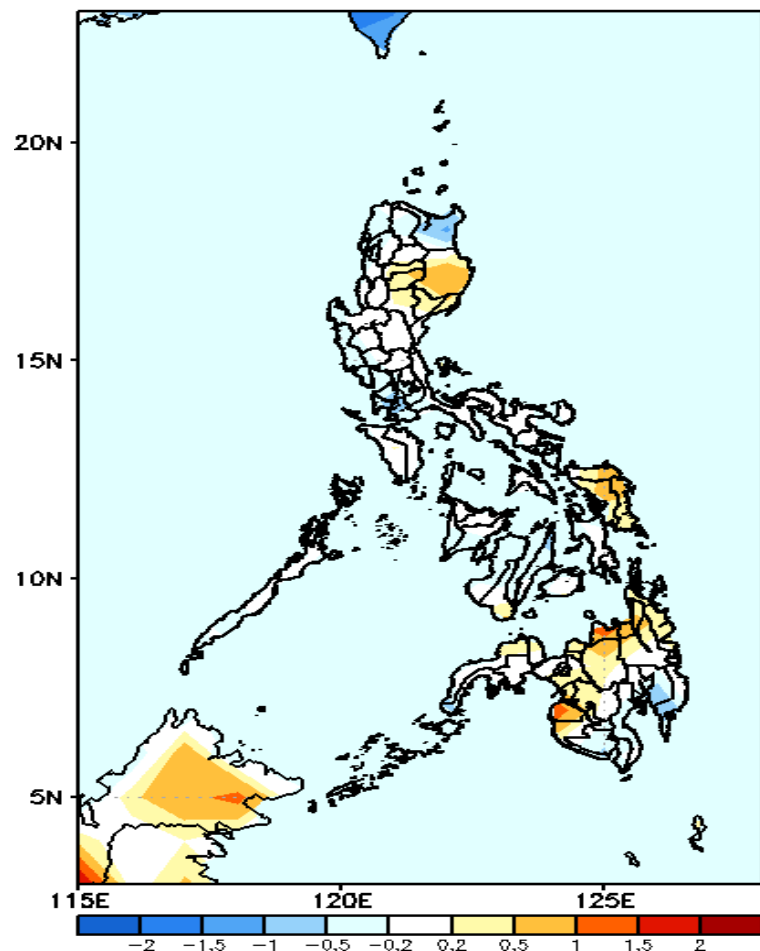
GEFS Week-2 Exceedance Prob. > 200mm
Valid: 20221111 - 20221117



Low probability of rainfall to exceed 200mm in most parts of the country during the forecast period.

GEFS Week-1 & 2 Forecasts: T2m Anomaly

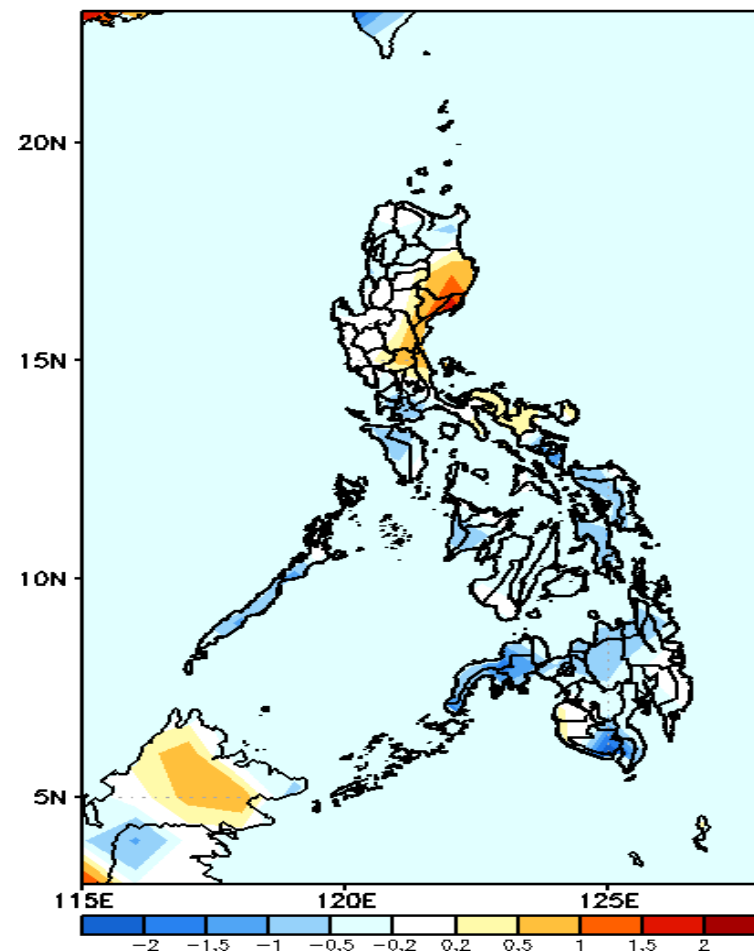
GEFS Week-1 T2m Anomaly
Valid: 20221104 – 20221110



2m Temperature Week 1: Nov 04-10, 2022

Near average surface air temperature will likely experience in most parts of Luzon and Visayas except in Cagayan (slightly cooler) while slightly warmer to warmer than average air temperature is expected in Isabela, Samar provinces and most parts of Mindanao during the forecast period.

GEFS Week-2 T2m Anomaly
Valid: 20221111 – 20221117



2m Temperature Week 2: Nov 11 - 17, 2022

Near to cooler than average surface air temperature will likely experience in most parts of the country except in Isabela, Quirino, Aurora, Bulacan where slightly warmer to warmer than average surface air temperature is expected during the forecast period.