



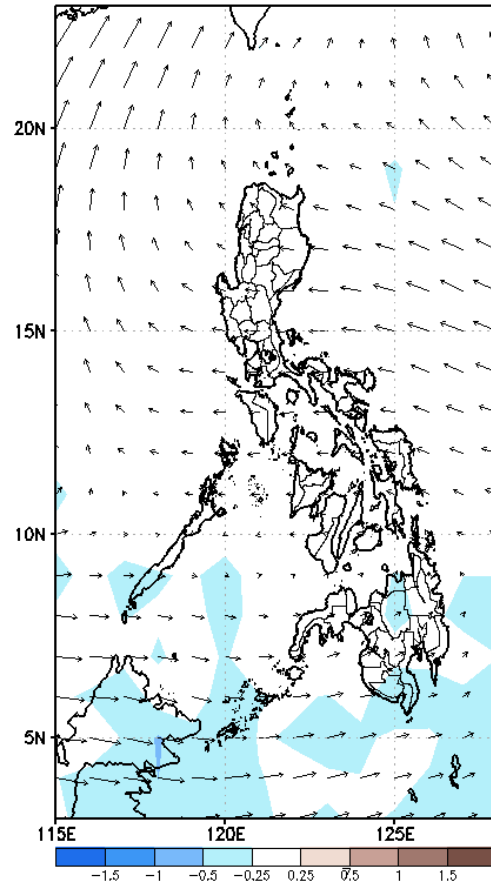
Week 1 & Week 2 Forecast for the Philippines using GEFS Model



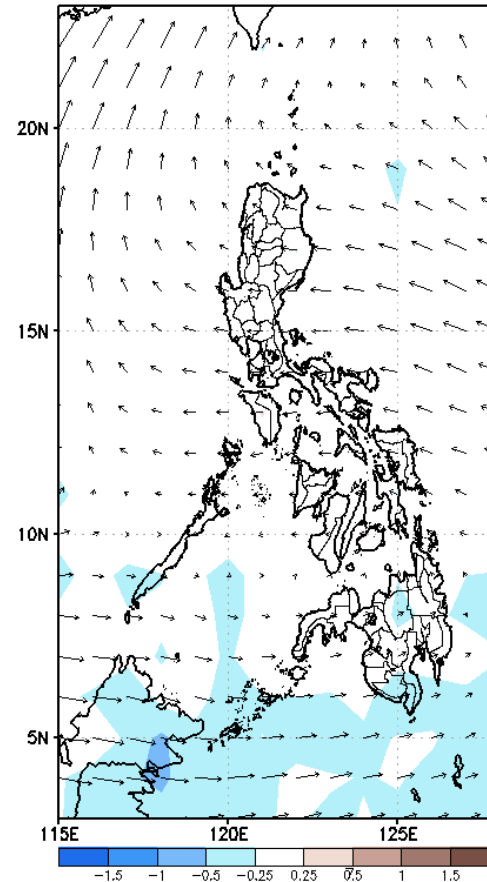
GEFS Week-1 Forecasts: Wind Anomaly Forecast

Week 1: Jul 04- Jul 10, 2022

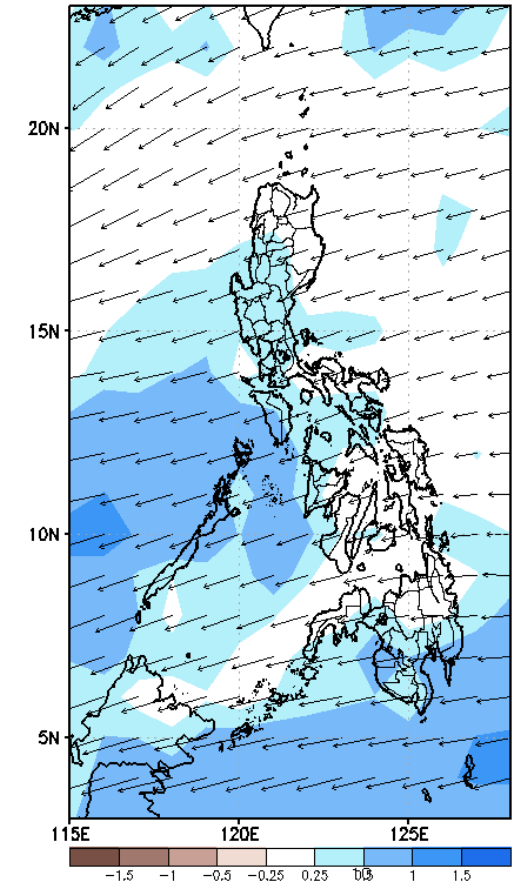
GEFS Week-1 850-hPa Divergence and Wind Anomaly
Valid: 20220704 - 20220710



GEFS Week-1 700-hPa Divergence and Wind Anomaly
Valid: 20220704 - 20220710



GEFS Week-1 200-hPa Divergence and Wind Anomaly
Valid: 20220704 - 20220710

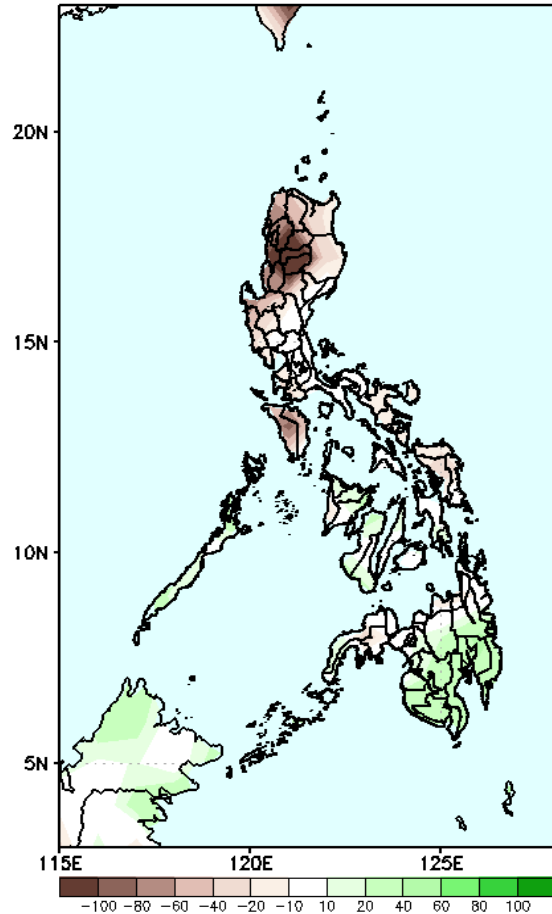


Westerlies affecting Mindanao while Easterlies affecting the rest of the country during the forecast period.

Precipitation Anomaly and Exceedance Probability > 25/50 mm

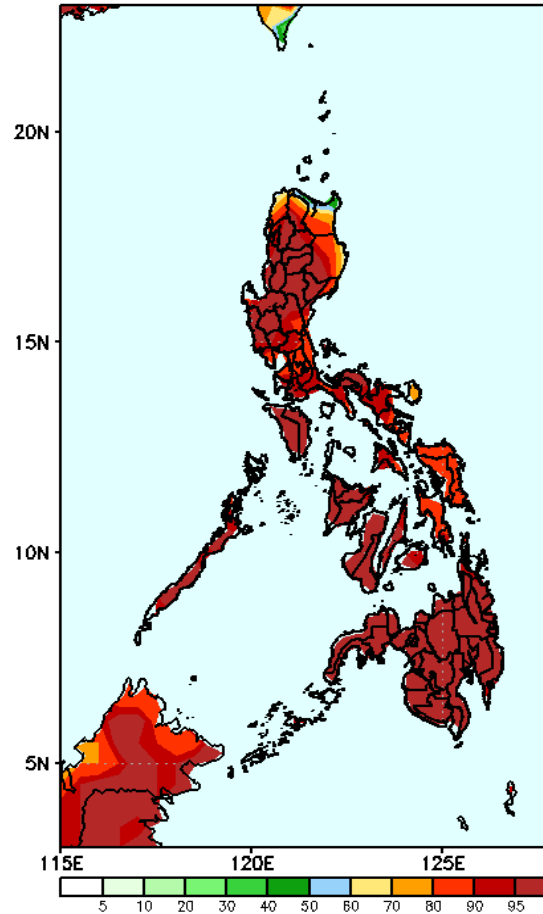
Week 1: Jul 04- Jul 10, 2022

GEFS Week-1 Precip Anomaly
Valid: 20220704 – 20220710



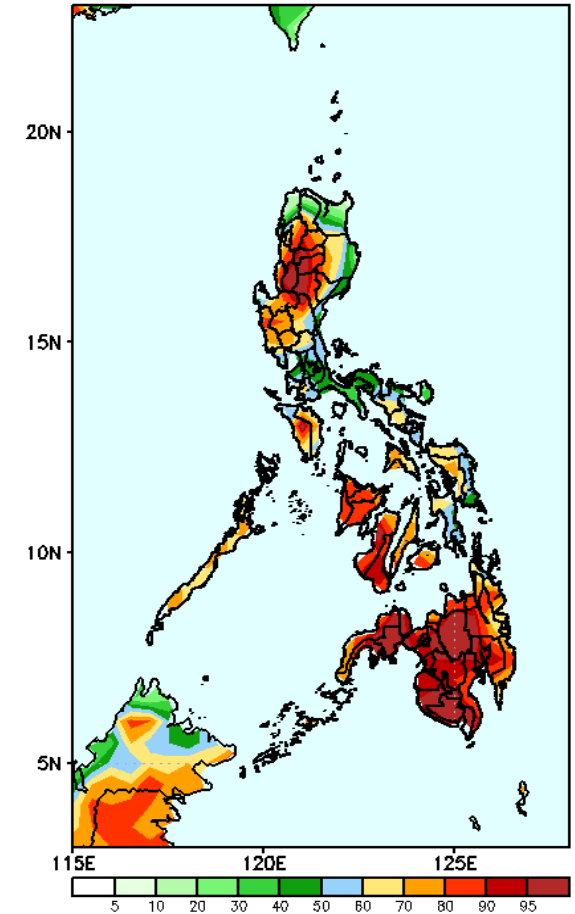
40 – 100mm rainfall deficit will be likely in most parts of Luzon except Palawan while an increase of rainfall of 20 – 60mm is expected in Visayas and Mindanao during the forecast period .

GEFS Week-1 Exceedance Prob. > 25mm
Valid: 20220704 – 20220710



High probability of rainfall to exceed 25mm in most parts of the country during the forecast period.

GEFS Week-1 Exceedance Prob. > 50mm
Valid: 20220704 – 20220710

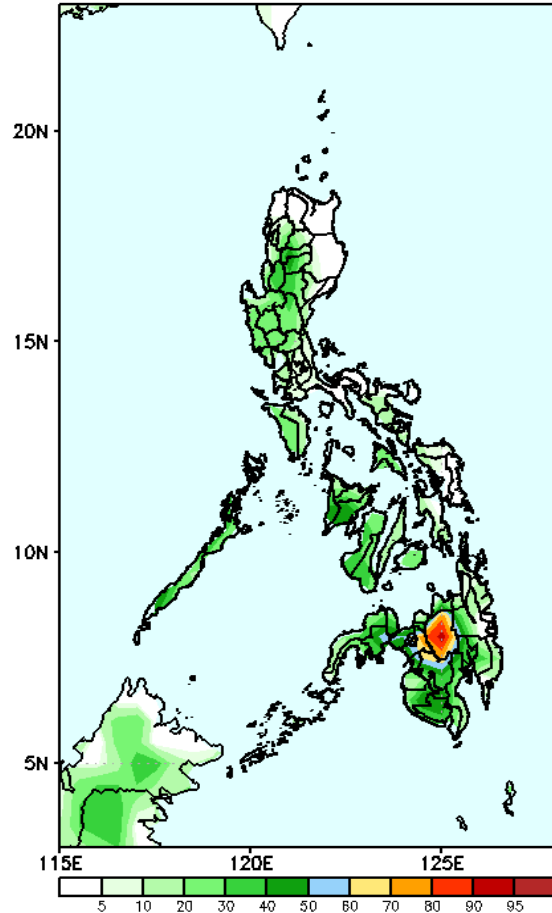


High probability of rainfall to exceed 50mm in most parts of the country except Quezon, Camarines Norte and Catanduanes during the forecast period.

Exceedance Probability > 100/150/200 mm

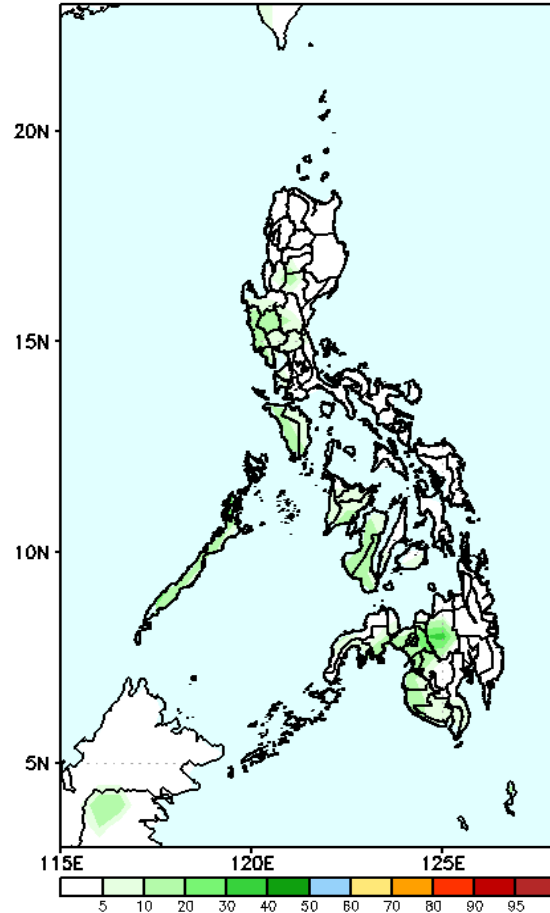
Week 1: Jul 04- Jul 10, 2022

GEFS Week-1 Exceedance Prob. > 100mm
Valid: 20220704 - 20220710



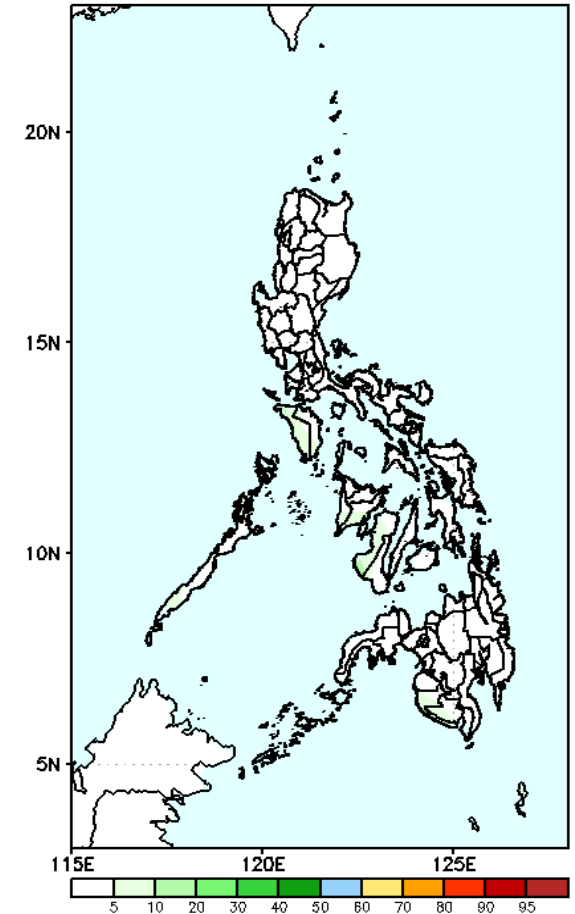
Low probability of rainfall to exceed 100mm in most parts of the country except Bukidnon during the forecast period.

GEFS Week-1 Exceedance Prob. > 150mm
Valid: 20220704 - 20220710



Low probability of rainfall to exceed 150mm in most parts of the country during the forecast period.

GEFS Week-1 Exceedance Prob. > 200mm
Valid: 20220704 - 20220710

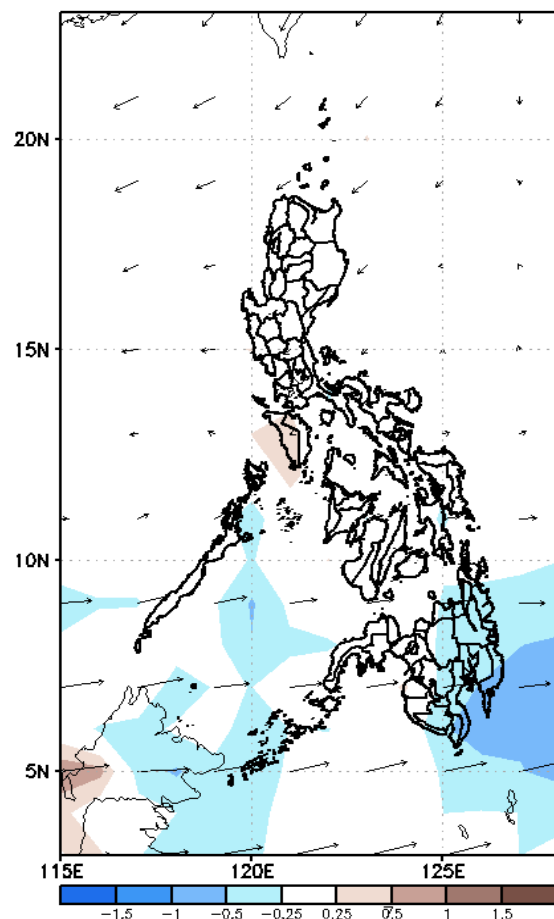


Low probability of rainfall to exceed 200mm in most parts of the country during the forecast period.

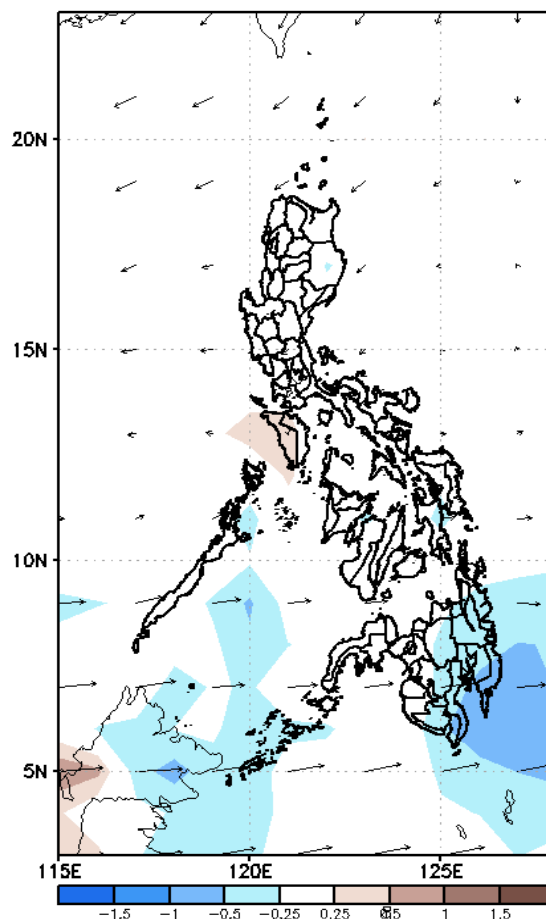
GEFS Week-2 Forecasts: Wind Anomaly Forecast

Week 2: Jul 11 – Jul 17, 2022

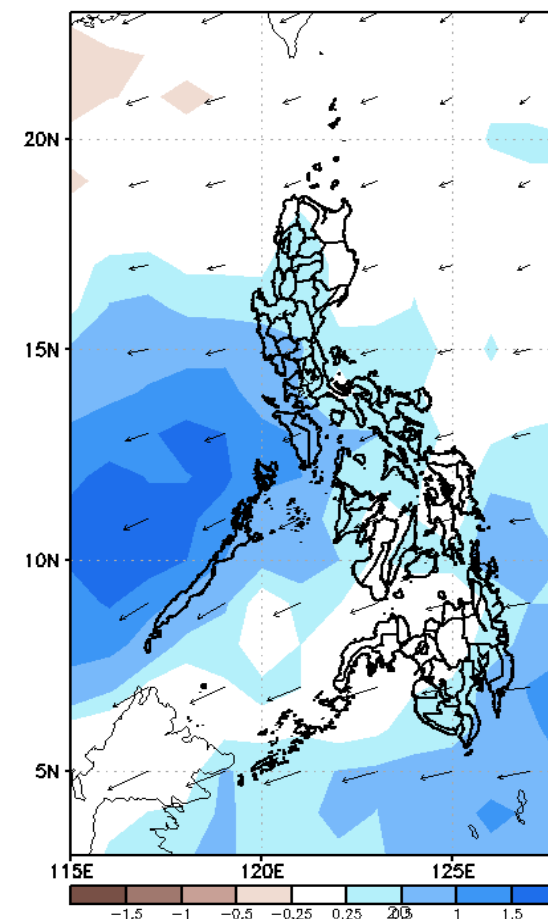
GEFS Week-2 850-hPa Divergence and Wind Anomaly
Valid: 20220711 – 20220717



GEFS Week-2 700-hPa Divergence and Wind Anomaly
Valid: 20220711 – 20220717



GEFS week-2 200-hPa Divergence and Wind Anomaly
Valid: 20220711 – 20220717



Westerly winds affecting Southern Visayas and Mindanao while Easterlies affecting the rest of the country during the forecast period.

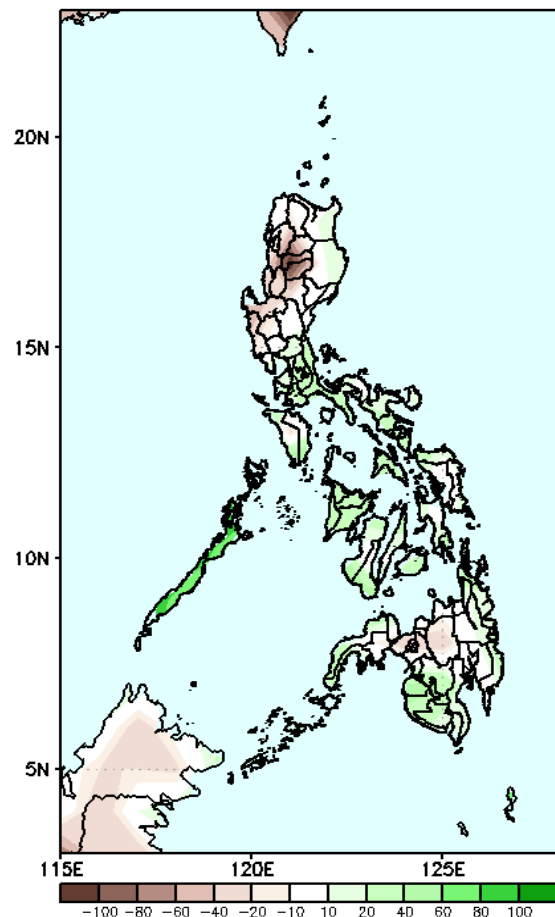
long
GASA



Precipitation Anomaly and Exceedance Probability > 25/50 mm

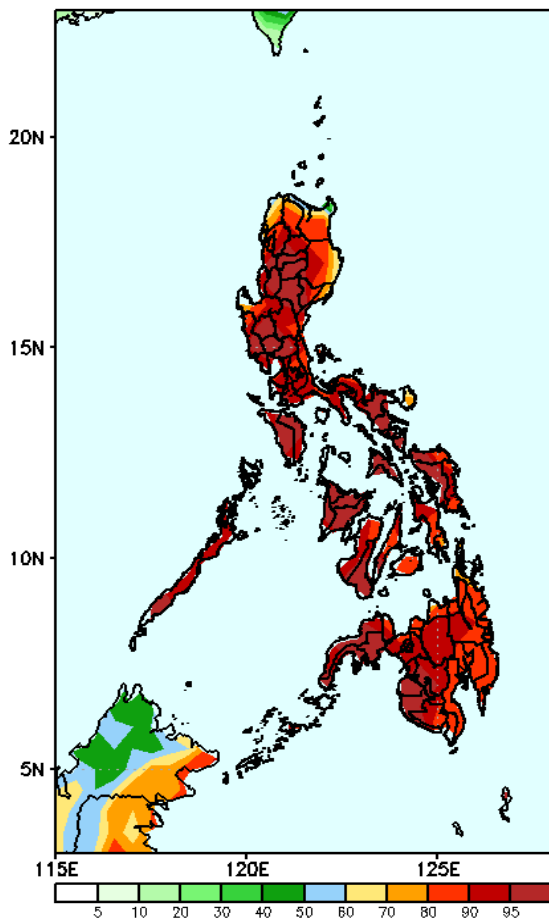
Week 2: Jul 11 – Jul 17, 2022

GEFS Week-2 Precip Anomaly
Valid: 20220711 – 20220717



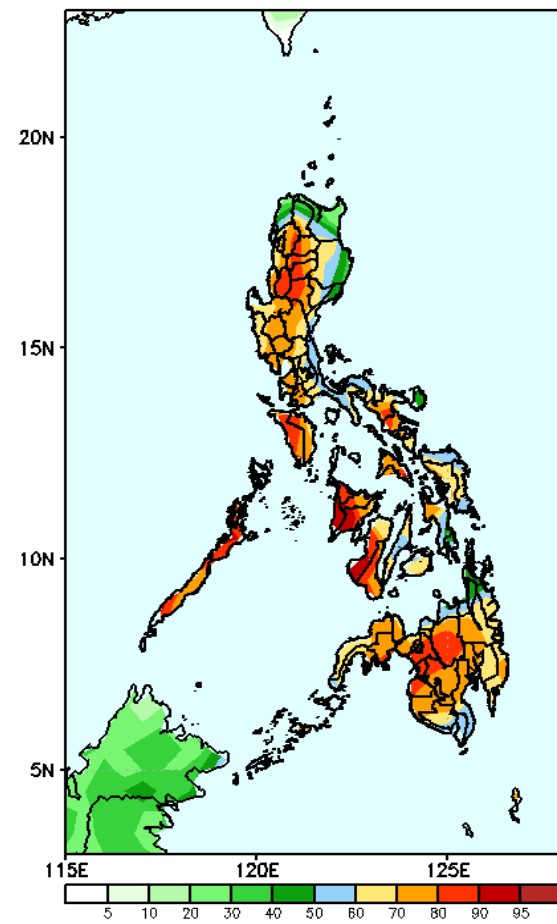
40-80mm increase of rainfall in most parts of the country except most parts of CAR, Ilocos Sur,, Pangasinan, La Union, Bukidnon, Lanao provinces where rainfall deficit of 40 - 60mm is expected during the forecast period.

GEFS Week-2 Exceedance Prob. > 25mm
Valid: 20220711 – 20220717



High probability of rainfall to exceed 25mm in most parts of the country during the forecast period.

GEFS Week-2 Exceedance Prob. > 50mm
Valid: 20220711 – 20220717

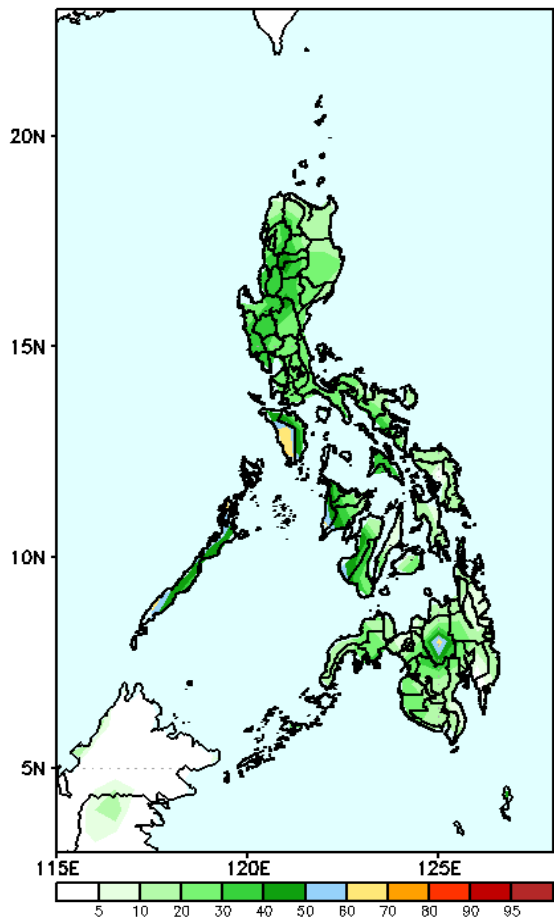


High probability of rainfall to exceed 50mm in most parts the country during the forecast period

Exceedance Probability > 100/150/200 mm

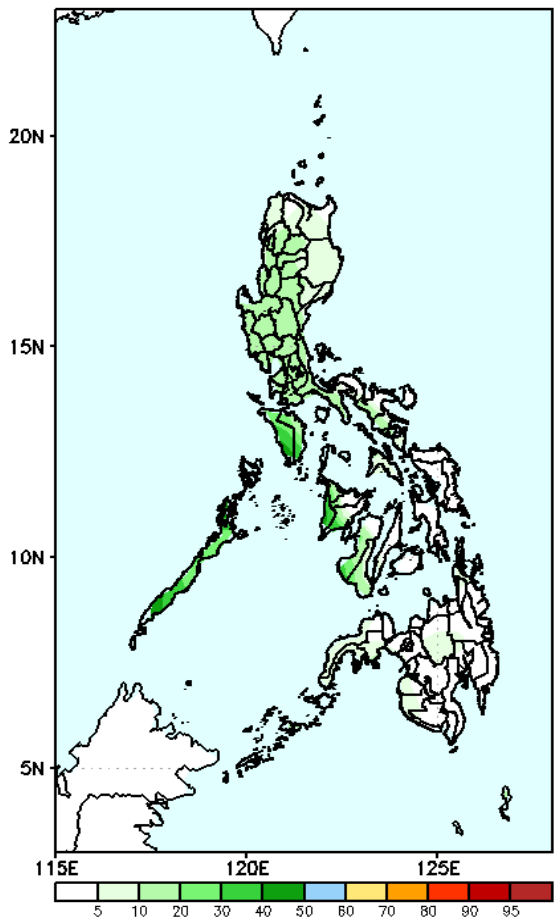
Week 2: Jul 11 – Jul 17, 2022

GEFS Week-2 Exceedance Prob. > 100mm
Valid: 20220711 – 20220717



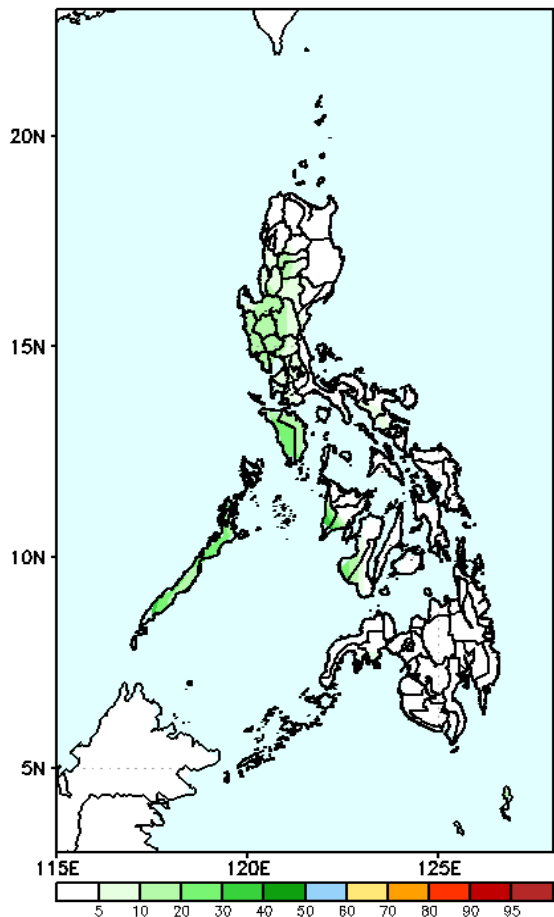
Low probability of rainfall to exceed 100mm in most parts of the country during the forecast period.

GEFS Week-2 Exceedance Prob. > 150mm
Valid: 20220711 – 20220717



Low probability of rainfall to exceed 150mm in most parts of the country during the forecast period.

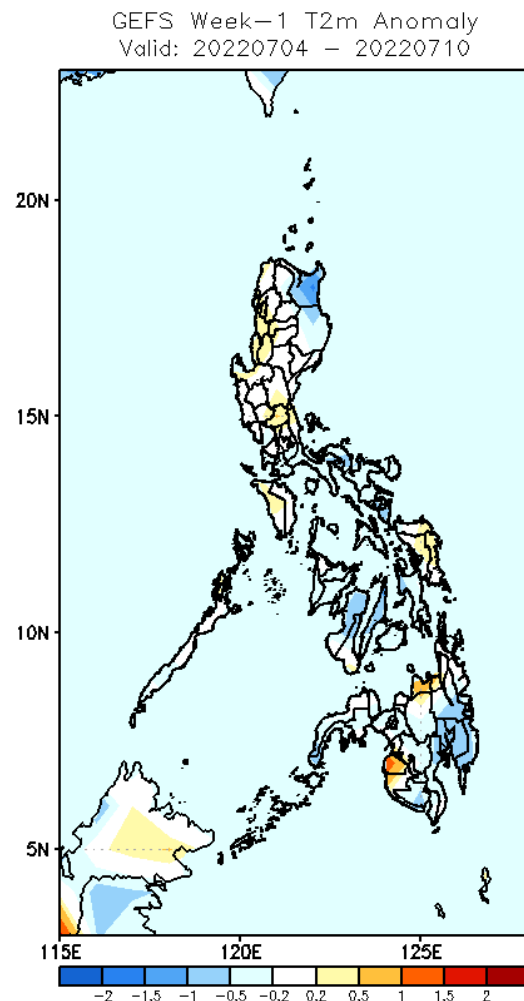
GEFS Week-2 Exceedance Prob. > 200mm
Valid: 20220711 – 20220717



Low probability of rainfall to exceed 200mm in most parts of the country during the forecast period.

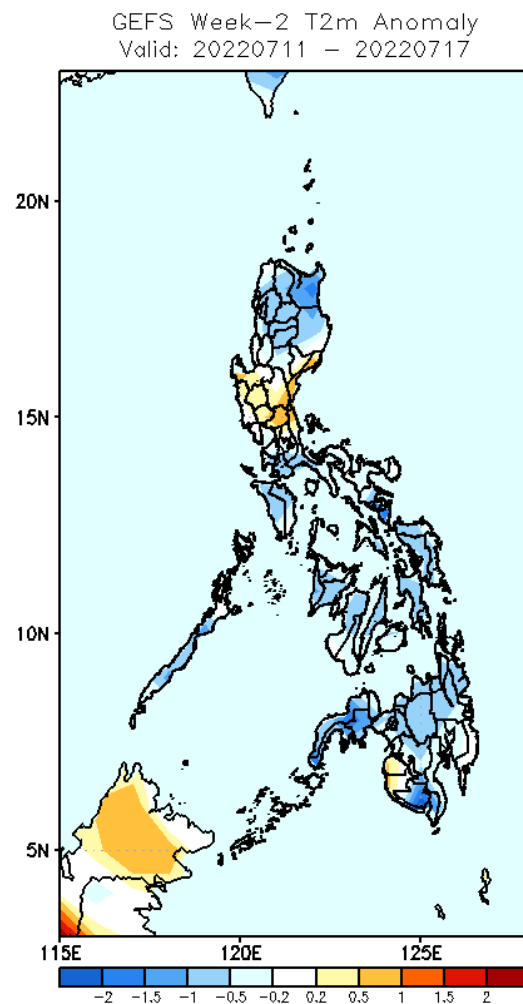


GEFS Week-1 & 2 Forecasts: T2m Anomaly



2m Temperature Week 1: Jul 04- Jul 10, 2022

Slightly cooler to cooler than average surface air temperature will likely experience in Cagayan, Bicol Region, Western and Central Visayas, Davao Region while average to warmer than average surface air temperature for the rest of the country during the forecast period.



2m Temperature Week 2: Jul 11 – Jul 17, 2022

Slightly cooler than average surface air temperature will likely experience in most parts of the country except Pangasinan, most parts of Central Luzon, Maguindanao and Sultan Kudarat were average to warmer than average surface air temperature will be likely for the rest of the country during the forecast period.