



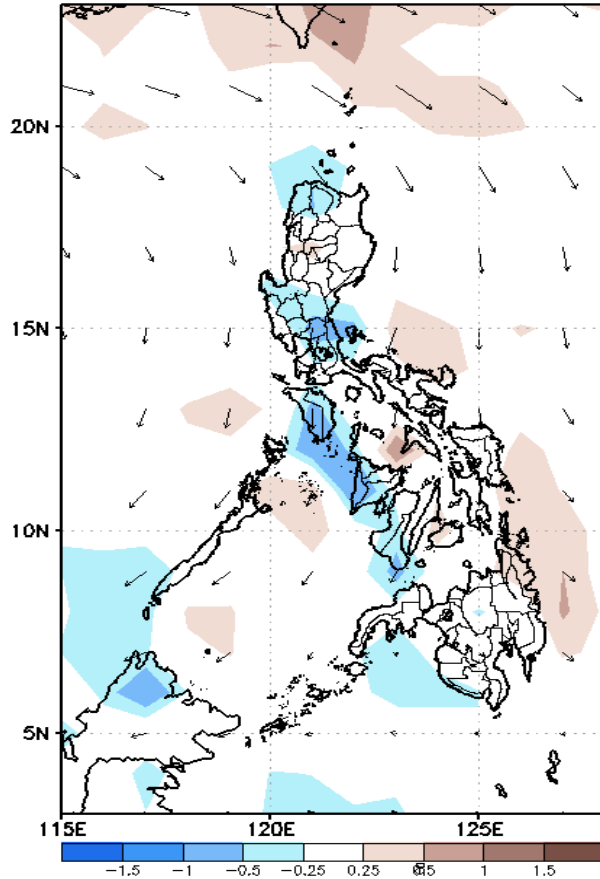
# Week 1 & Week 2 Forecast for the Philippines using GEFS Model



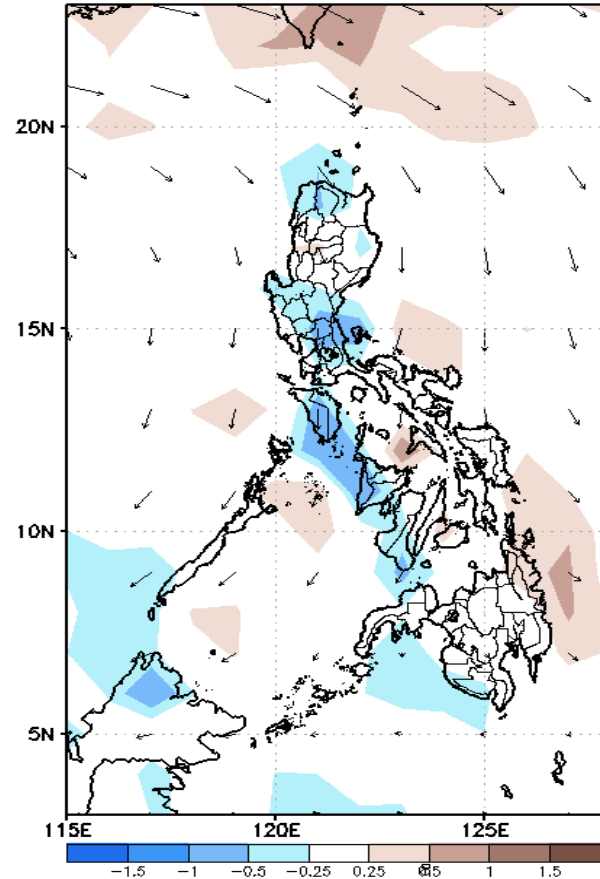
# GEFS Week-1 Forecasts: Divergence & Wind Anomaly

**Week 1: March 04-10, 2021**

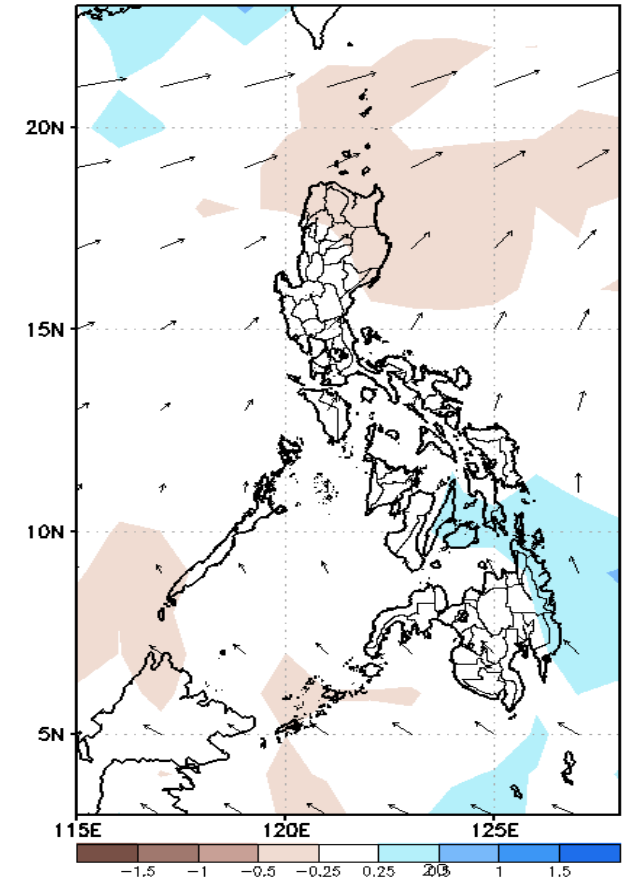
GEFS Week-1 850-hPa Divergence and Wind Anom  
Valid: 20210304 - 20210310



GEFS Week-1 700-hPa Divergence and Wind Anom  
Valid: 20210304 - 20210310



GEFS Week-1 200-hPa Divergence and Wind Anom  
Valid: 20210304 - 20210310

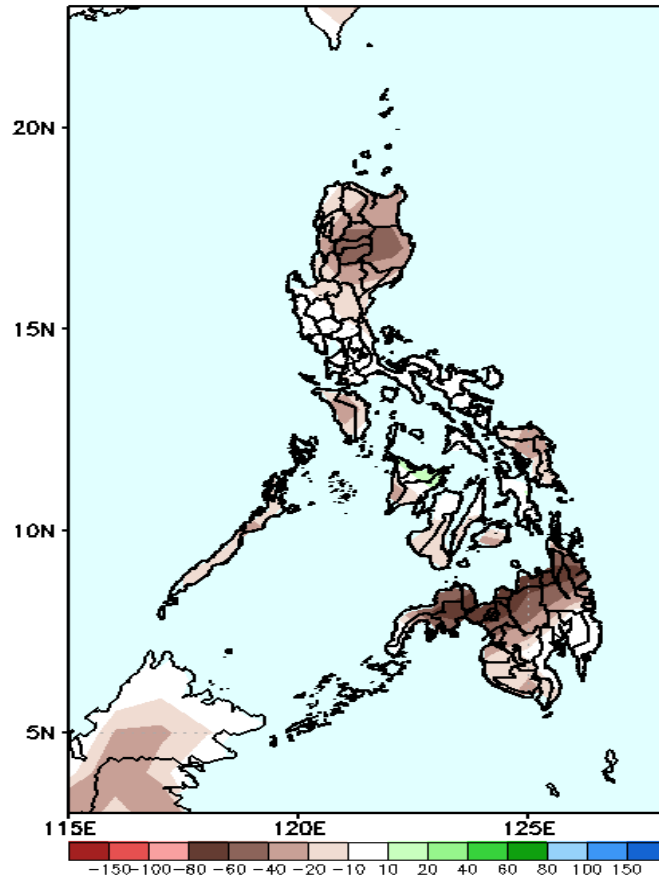


Upper and low level Divergence suggest likelihood of precipitation in Ilocos Norte, Apayao, Central Luzon and some parts of Western Visayas. Easterlies affecting most parts of the country. Northeast Monsoon affecting Extreme Northern Luzon during the forecast period.

# Precipitation Anomaly and Exceedance Probability > 25/50 mm

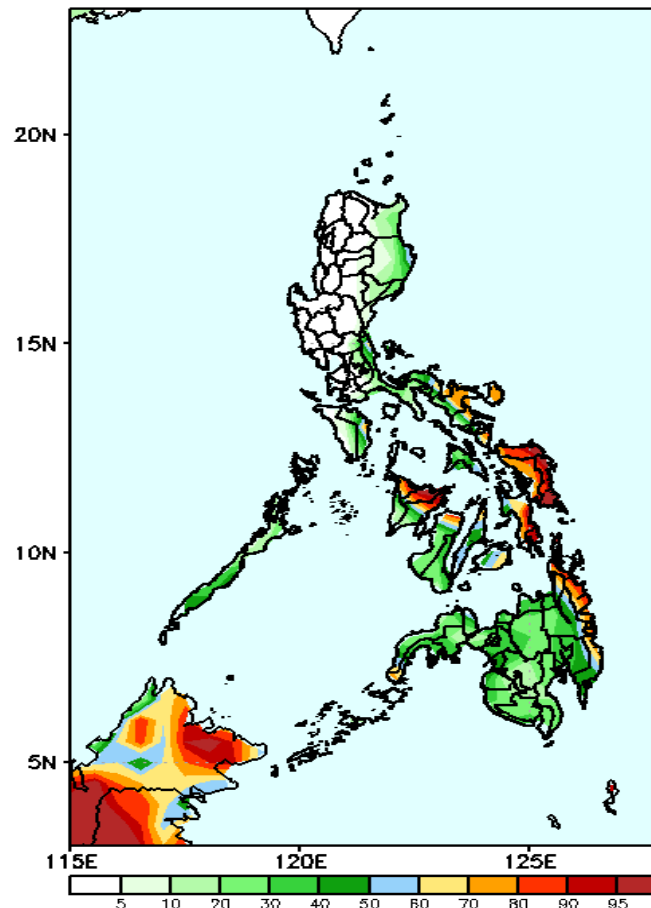
**Week 1: March 04-10, 2021**

GEFS Week-1 Precip Anomaly  
Valid: 20210304 - 20210310



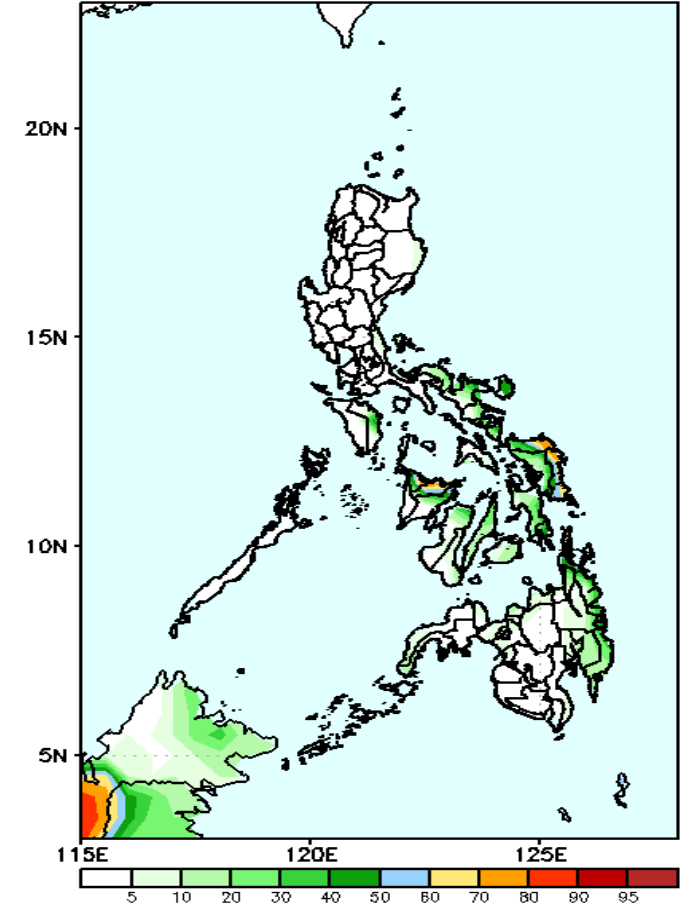
Rainfall deficit of up to 80mm is expected in most parts Cagayan Valley, Cordillera Region, Samar Provinces, in CARAGA, Northern Mindanao and Zamboanga Peninsula while 20-60mm rainfall deficit in the remaining parts of the country.

GEFS Week-1 Exceedance Prob. > 25mm  
Valid: 20210304 - 20210310



High probability of rainfall to exceed 25mm in Camarines Sur, Catanduanes, Eastern Visayas, Aklan, Capiz, Agusan del Norte and Tagum while less likely for rest of the country during the forecast period.

GEFS Week-1 Exceedance Prob. > 50mm  
Valid: 20210304 - 20210310

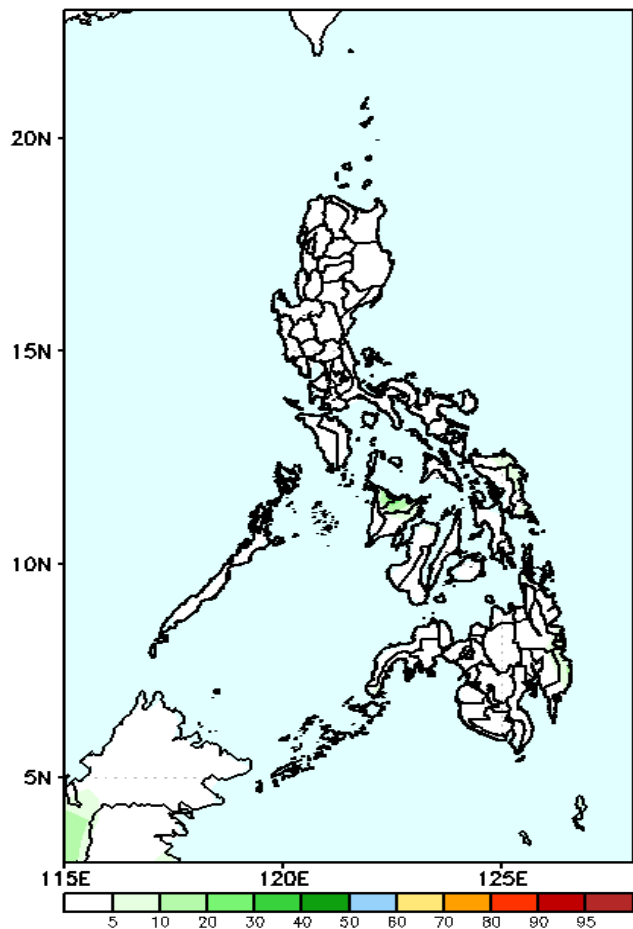


Less probability of rainfall to exceed 50mm in most parts of the country except eastern parts of Samar Provinces where there is high probability during the forecast period.

# Exceedance Probability > 100/150/200 mm

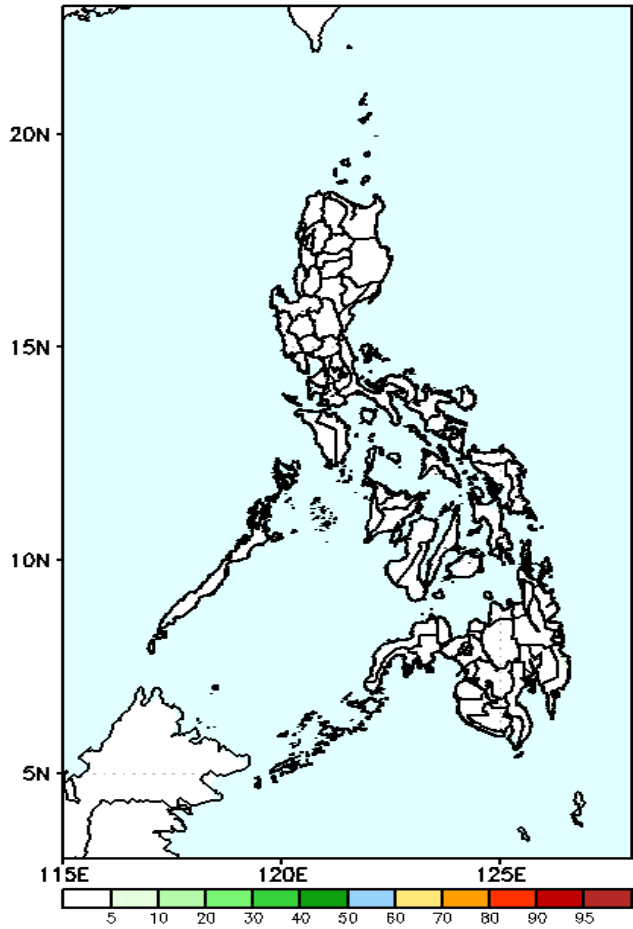
Week 1: March 04-10, 2021

GEFS Week-1 Exceedance Prob. > 100mm  
Valid: 20210304 - 20210310



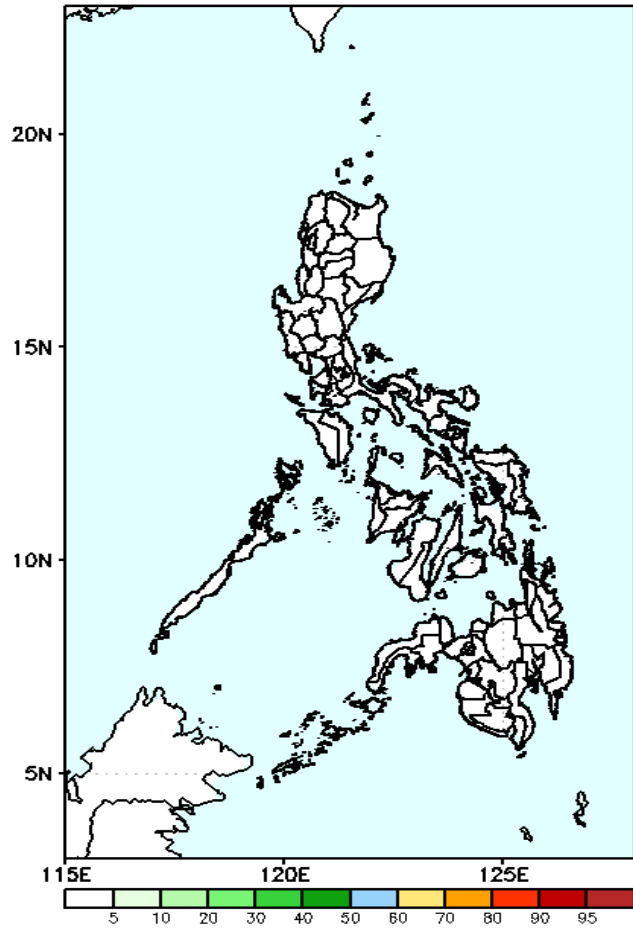
Less probability of rainfall to exceed 100mm in most parts of the country during the forecast period.

GEFS Week-1 Exceedance Prob. > 150mm  
Valid: 20210304 - 20210310



Less probability of rainfall to exceed 150mm in most parts of the country during the forecast period.

GEFS Week-1 Exceedance Prob. > 200mm  
Valid: 20210304 - 20210310

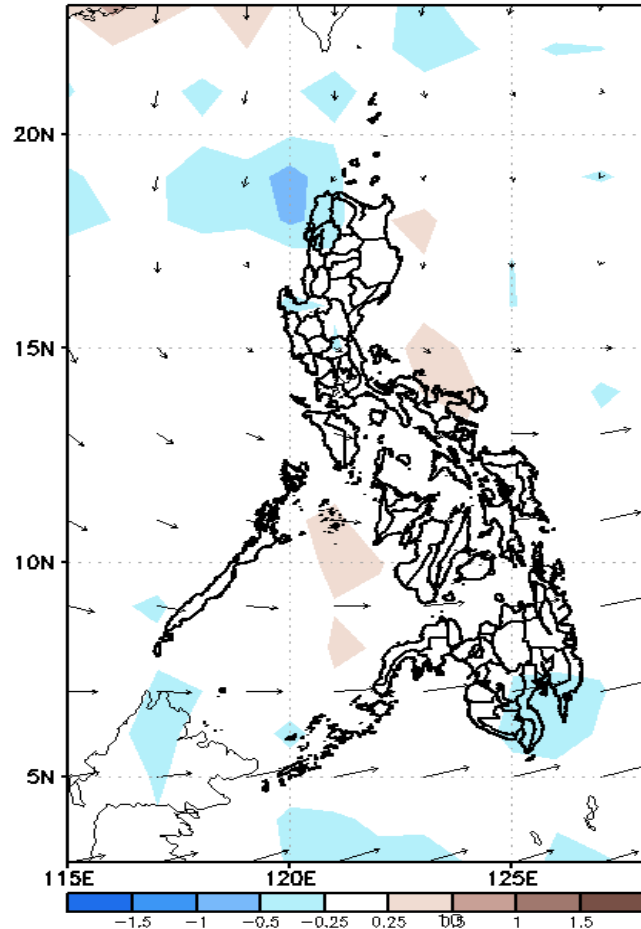


Less probability of rainfall to exceed 200mm in most parts of the country during the forecast period.

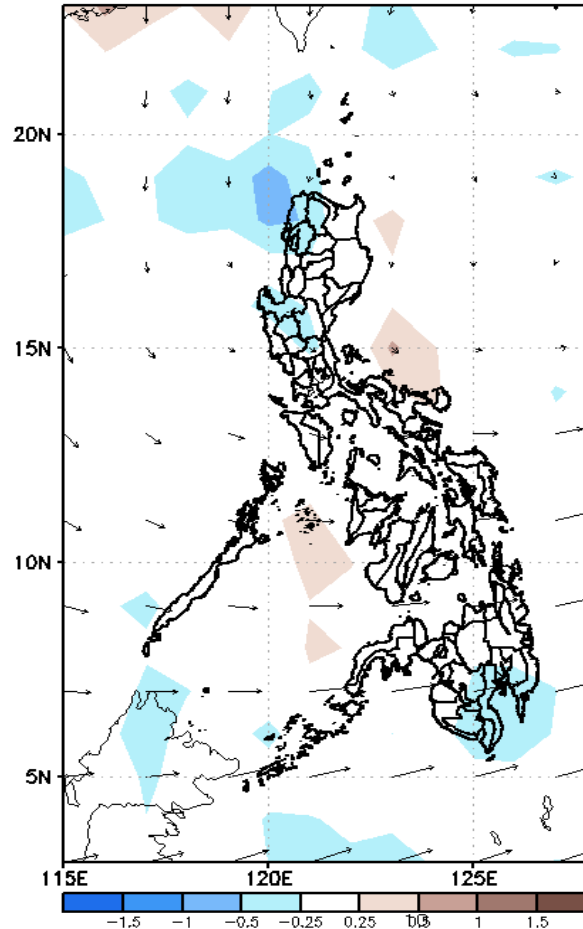
# GEFS Week-2 Forecasts: Divergence & Wind Anomaly

## Week 2: March 11-17, 2021

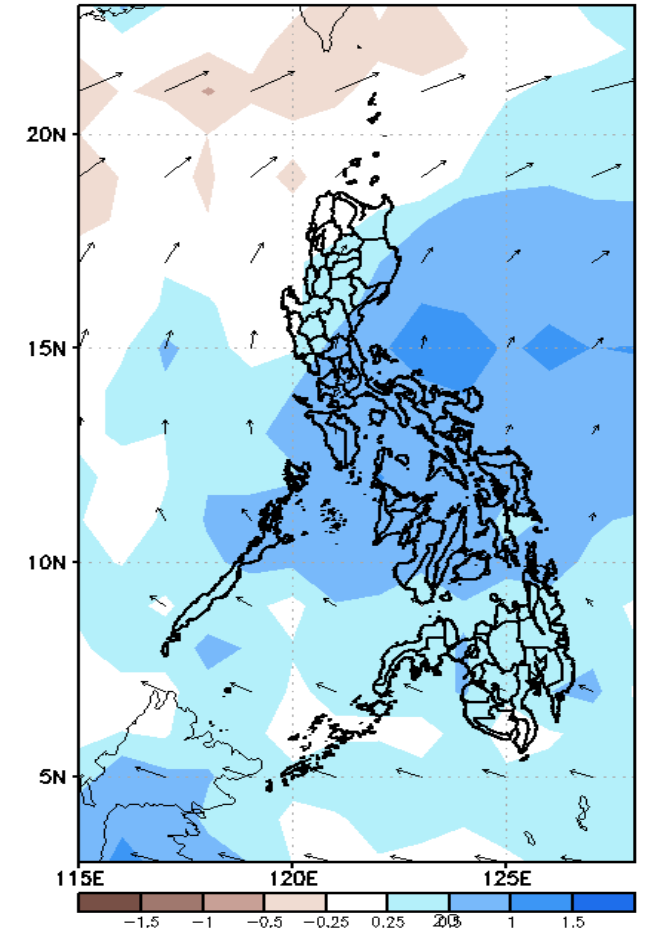
GEFS Week-2 850-hPa Divergence and Wind Anom  
Valid: 20210311 - 20210317



GEFS Week-2 700-hPa Divergence and Wind Anom  
Valid: 20210311 - 20210317



GEFS week-2 200-hPa Divergence and Wind Anom  
Valid: 20210311 - 20210317

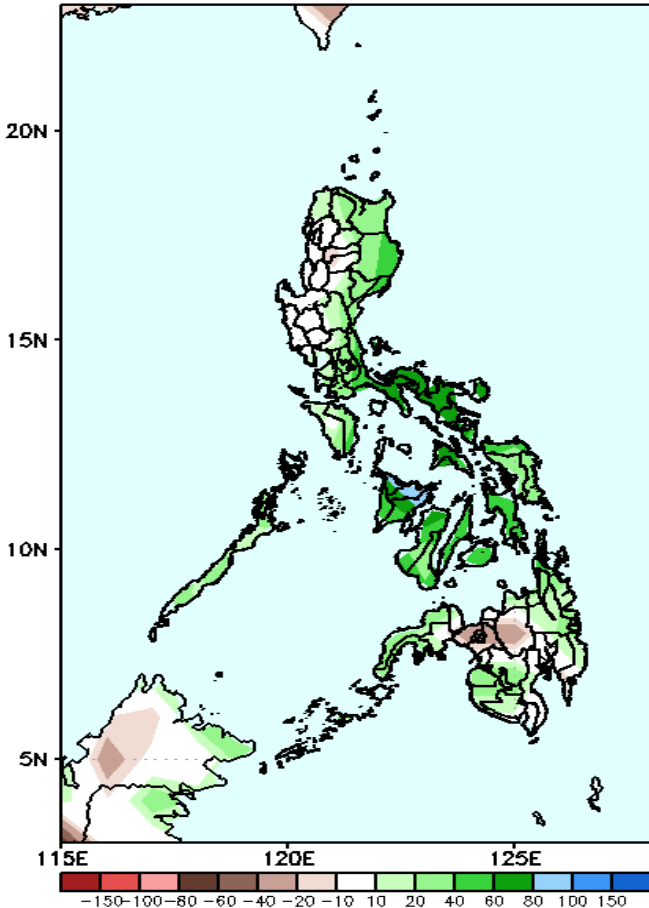


Upper and low level Divergence suggest likelihood of precipitation in most parts of the country. Northeast Monsoon affecting most parts of Luzon. Easterlies affecting Visayas and Mindanao during the forecast period.

# Precipitation Anomaly and Exceedance Probability > 25/50 mm

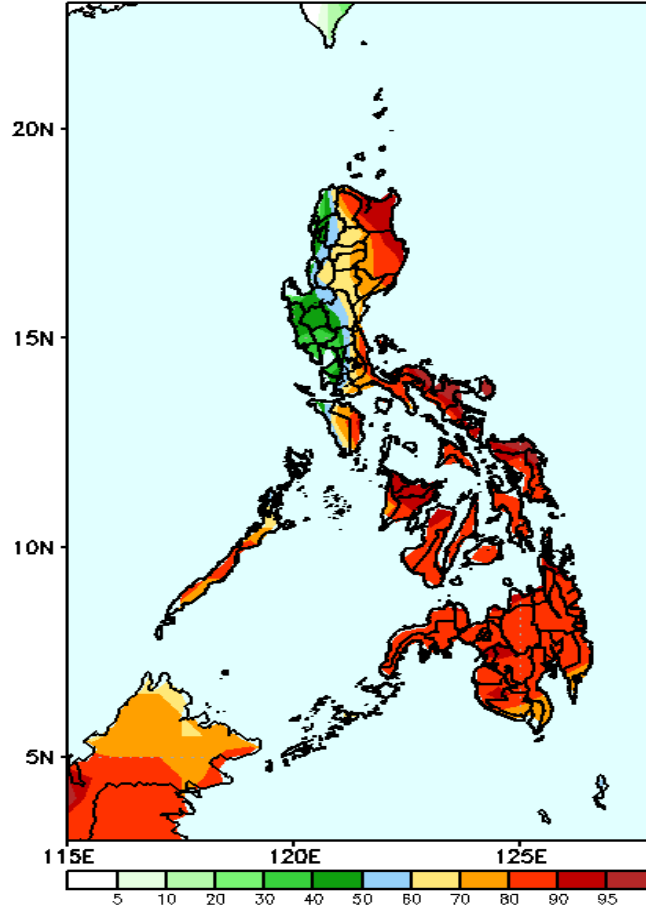
## Week 2: March 11-17, 2021

GEFS Week-2 Precip Anomaly  
Valid: 20210311 - 20210317



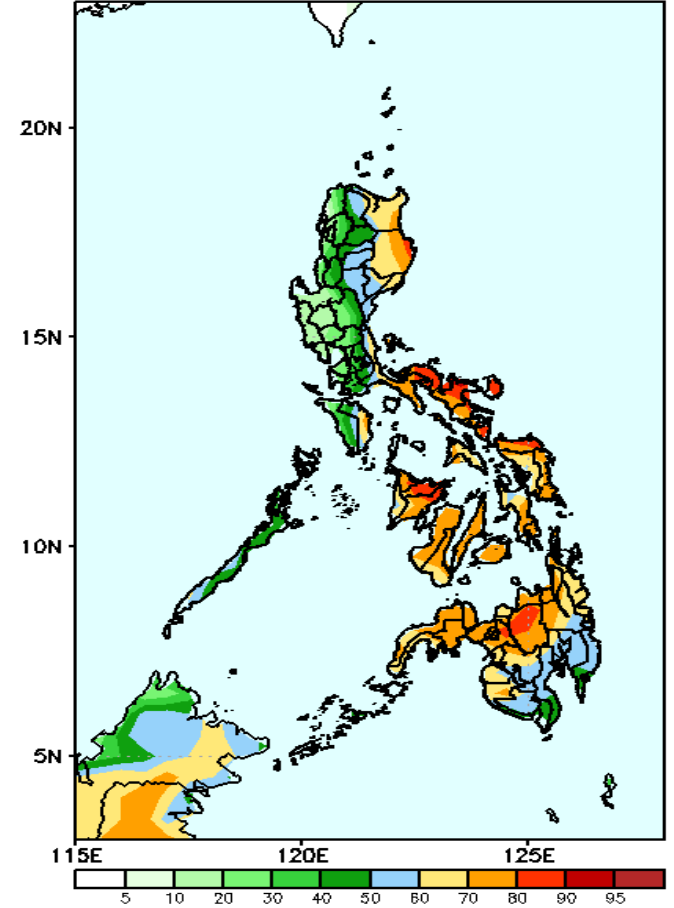
Increase of rainfall of 40-80mm is expected in most parts of the country except in western Luzon and Malaybalay.

GEFS Week-2 Exceedance Prob. > 25mm  
Valid: 20210311 - 20210317



High probability of rainfall to exceed 25mm in most parts of Cagayan Valley, Cordillera Region, Southern Luzon and Visayas & Mindanao while less likely for the rest of Luzon during the forecast period.

GEFS Week-2 Exceedance Prob. > 50mm  
Valid: 20210311 - 20210317



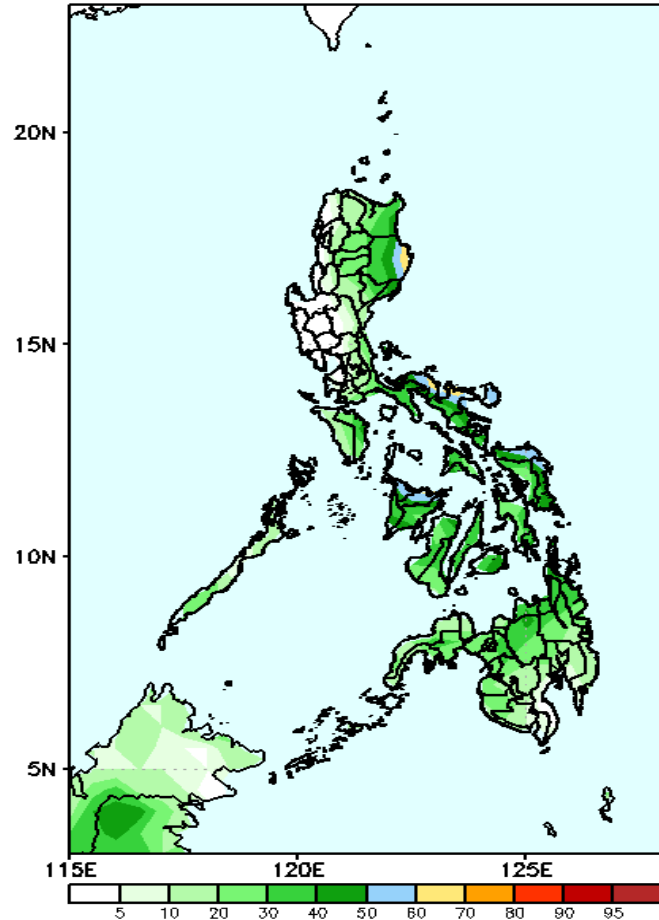
High probability of rainfall to exceed 50mm in most parts of Cagayan & Isabela, Bicol region, entire Visayas and northern half of Mindanao while less likely for the rest of the country during the forecast period.



# Exceedance Probability > 100/150/200 mm

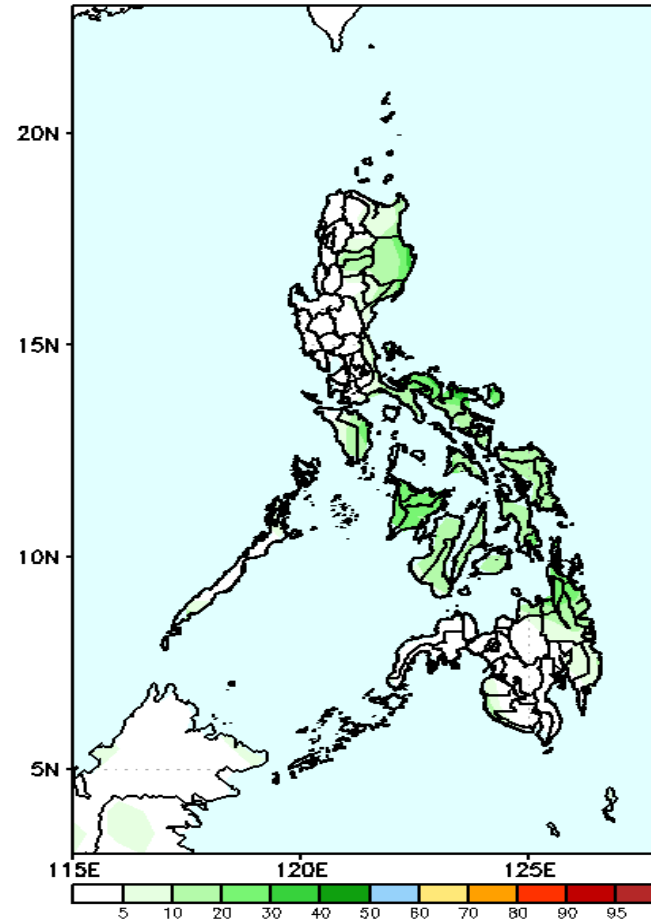
**Week 2: March 11-17, 2021**

GEFS Week-2 Exceedance Prob. > 100mm  
Valid: 20210311 – 20210317



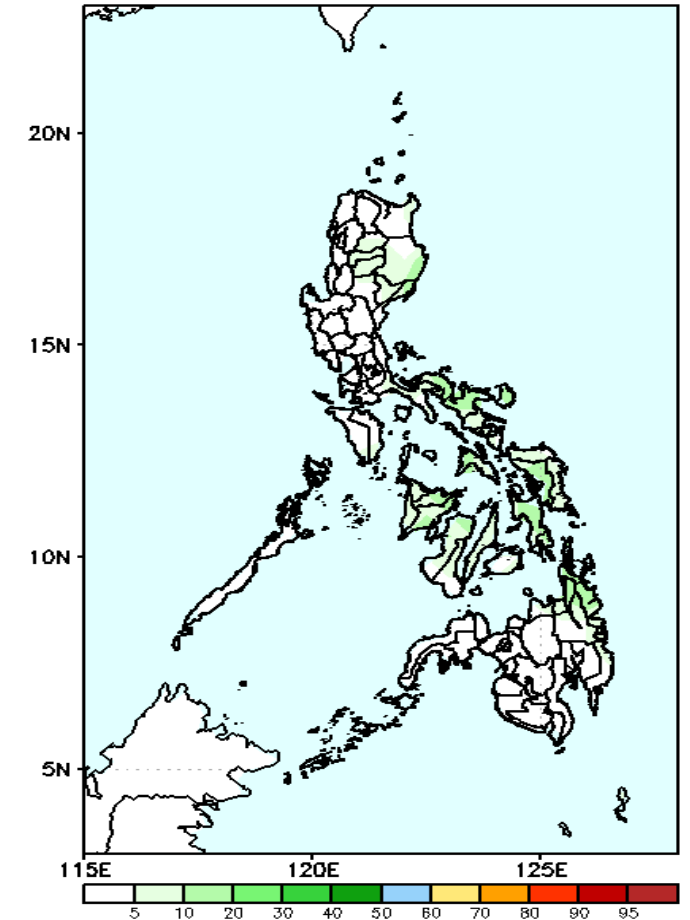
Less probability of rainfall to exceed 100mm in most parts of the country during the forecast period.

GEFS Week-2 Exceedance Prob. > 150mm  
Valid: 20210311 – 20210317



Less probability of rainfall to exceed 150mm in most parts of the country during the forecast period.

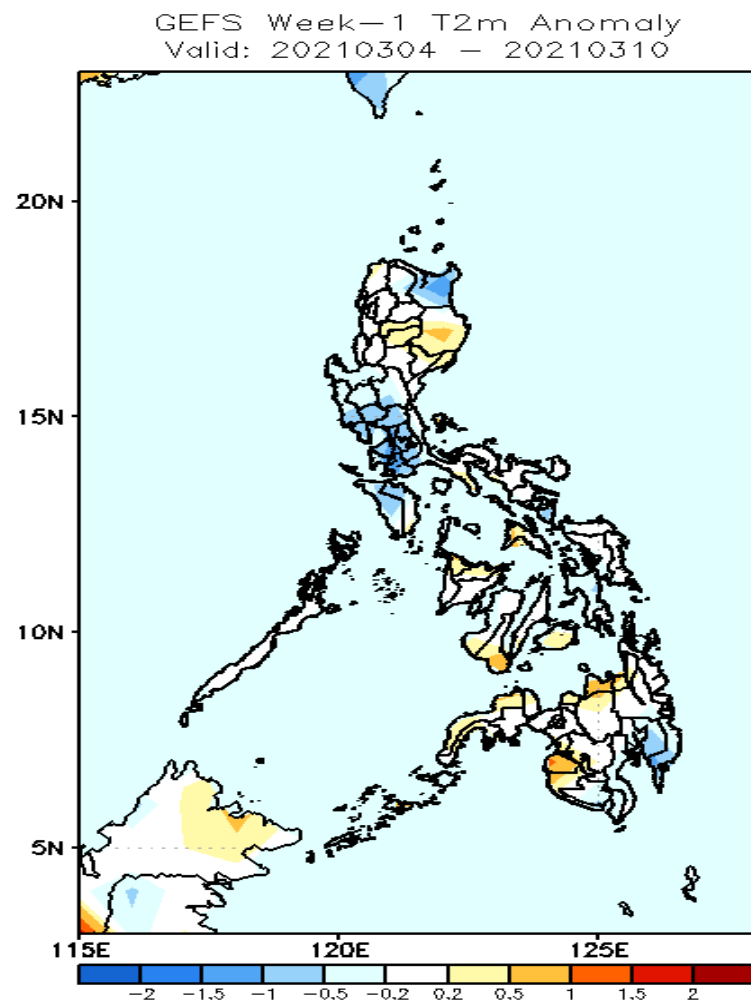
GEFS Week-2 Exceedance Prob. > 200mm  
Valid: 20210311 – 20210317



Less probability of rainfall to exceed 200mm in most parts of the country during the forecast period.

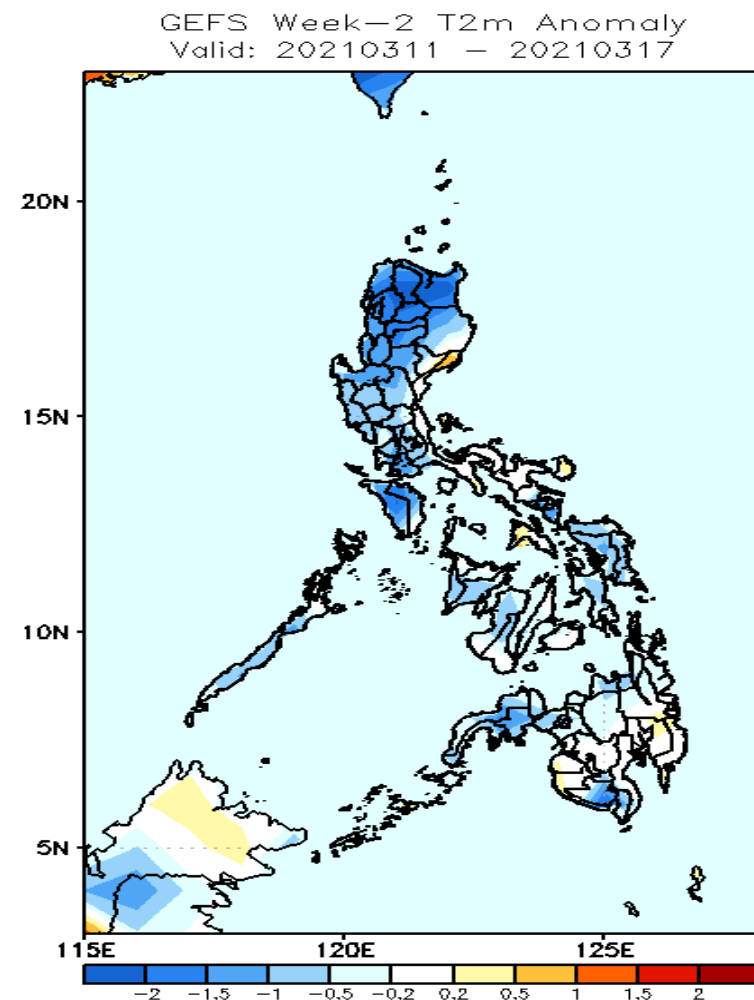


# GEFS Week-1 & 2 Forecasts: T2m Anomaly



## 2m Temperature Week 1: March 04-10, 2021

Average to slightly cooler than average surface air temperature is expected most parts of the country except in Isabela, Misamis Oriental and Maguindanao where slightly warmer temperature is likely during the forecast period.



## 2m Temperature Week 2: March 11-17, 2021

Slightly cooler to cooler than average surface air temperature is expected in most parts of the country during the forecast period.