



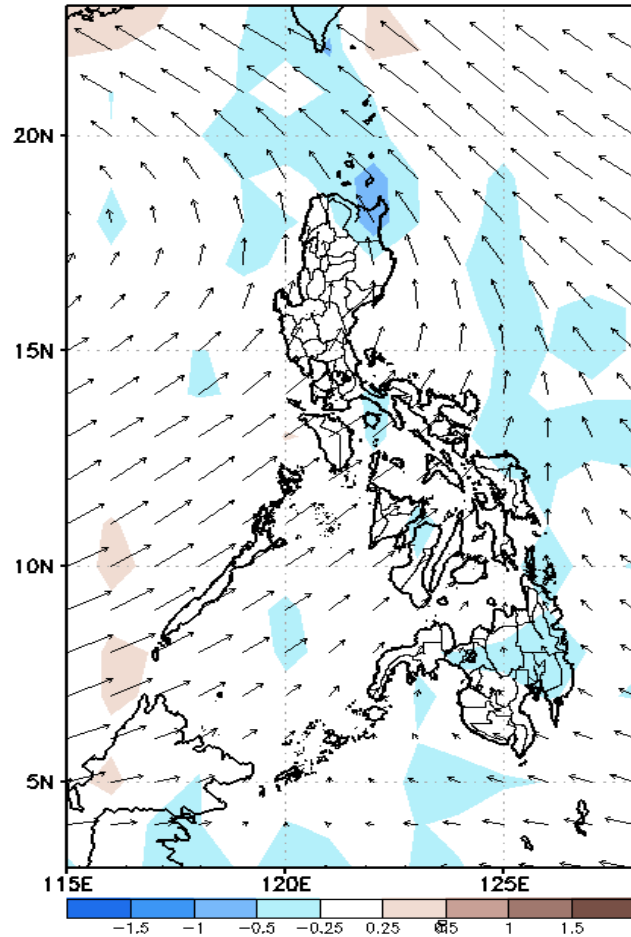
Week 1 & Week 2 Forecast for the Philippines using GEFS Model



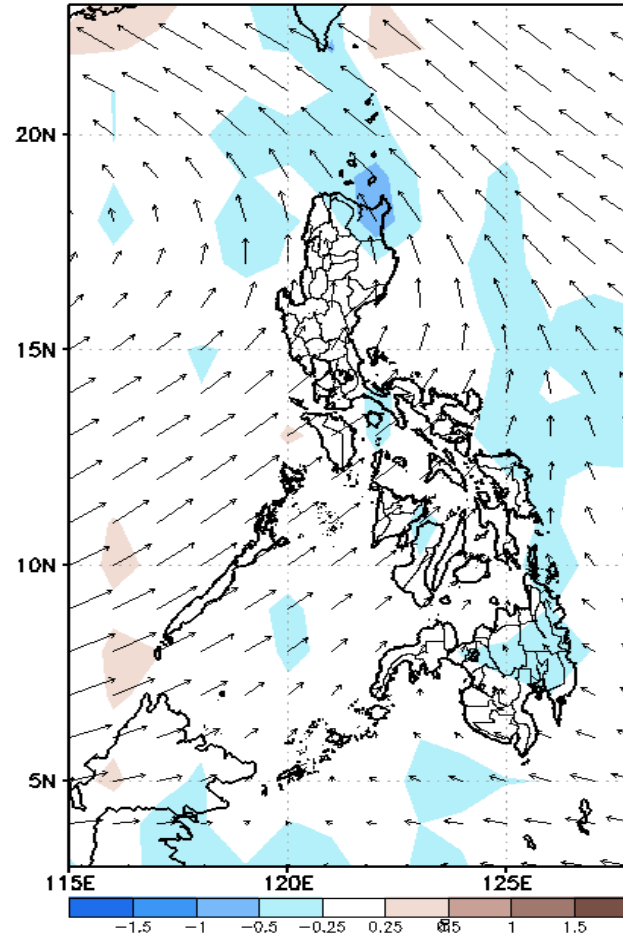
GEFS Week-1 Forecasts: Wind Anomaly Forecast

Week 1: Aug 05-11, 2022

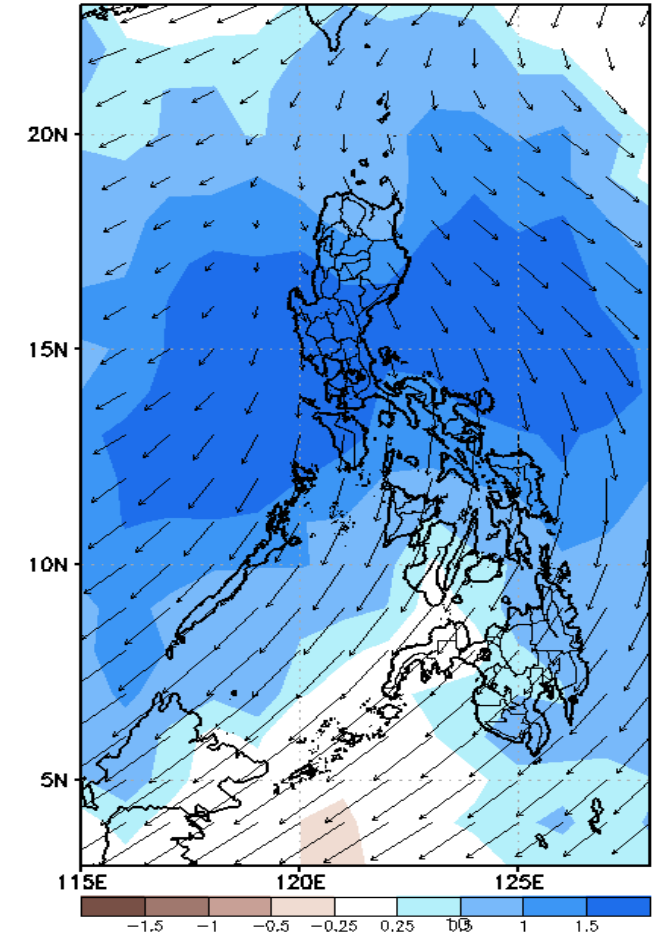
GEFS Week-1 850-hPa Divergence and Wind Anom
Valid: 20220805 - 20220811



GEFS Week-1 700-hPa Divergence and Wind Anom
Valid: 20220805 - 20220811



GEFS Week-1 200-hPa Divergence and Wind Anom
Valid: 20220805 - 20220811

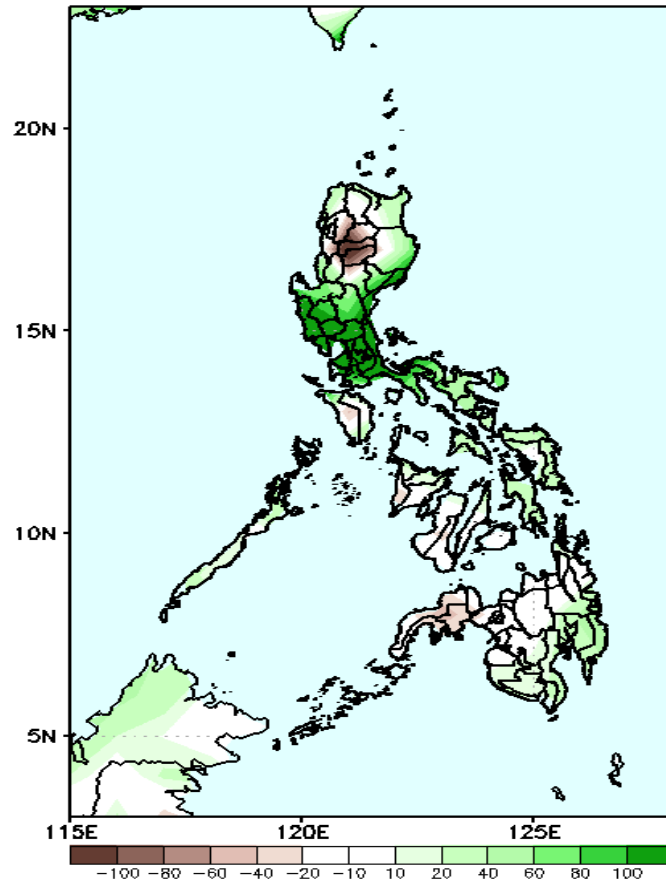


Southwest Monsoon affecting Luzon and Visayas while Easterlies affecting Mindanao during the forecast period.

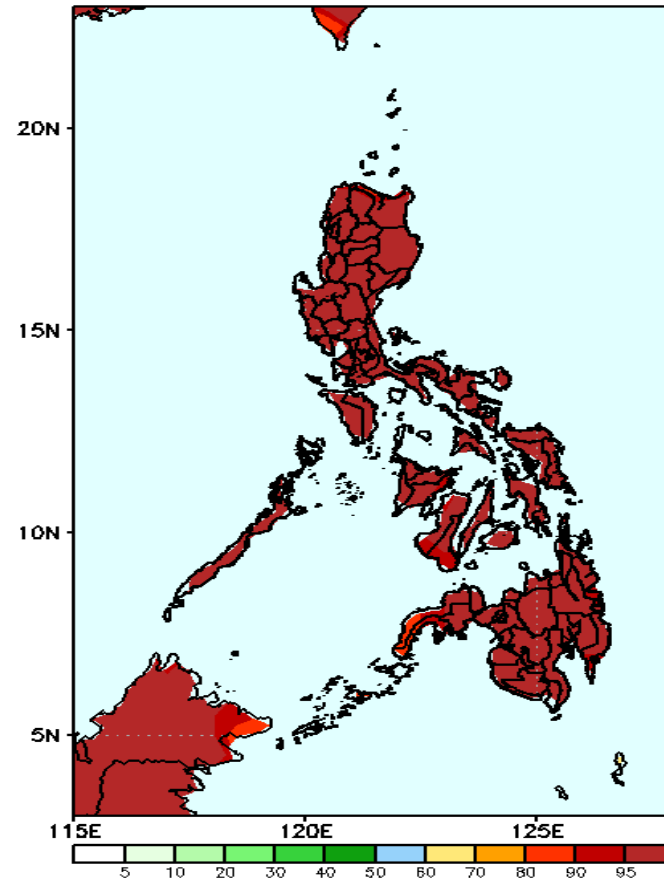
Precipitation Anomaly and Exceedance Probability > 25/50 mm

Week 1: Aug 05-11, 2022

GEFS Week-1 Precip Anomaly
Valid: 20220805 - 20220811

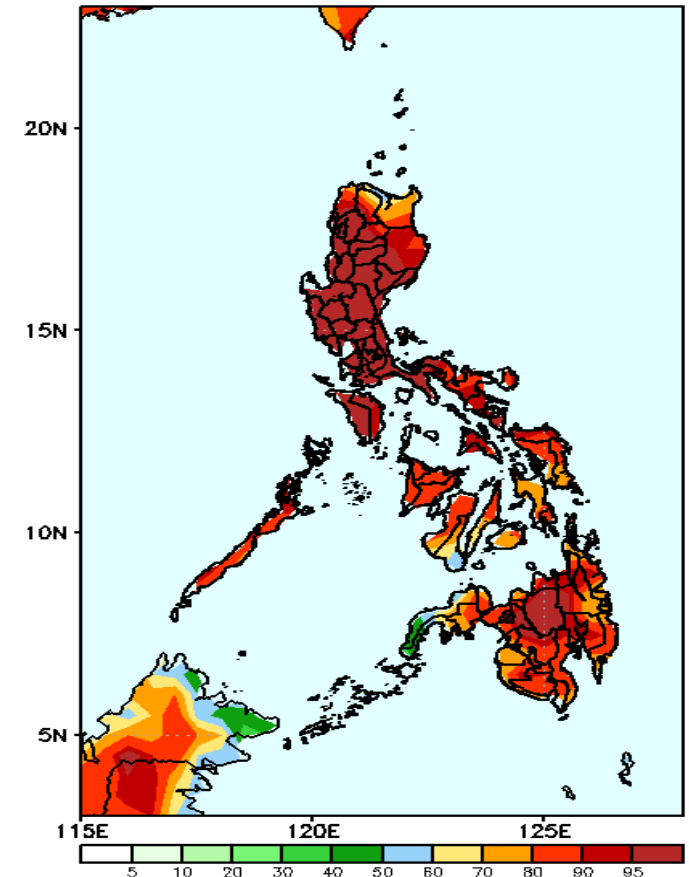


GEFS Week-1 Exceedance Prob. > 25mm
Valid: 20220805 - 20220811



High probability of rainfall to exceed 25mm in most parts of the country during the forecast period.

GEFS Week-1 Exceedance Prob. > 50mm
Valid: 20220805 - 20220811



High probability of rainfall to exceed 50mm in most parts of the country during the forecast period.

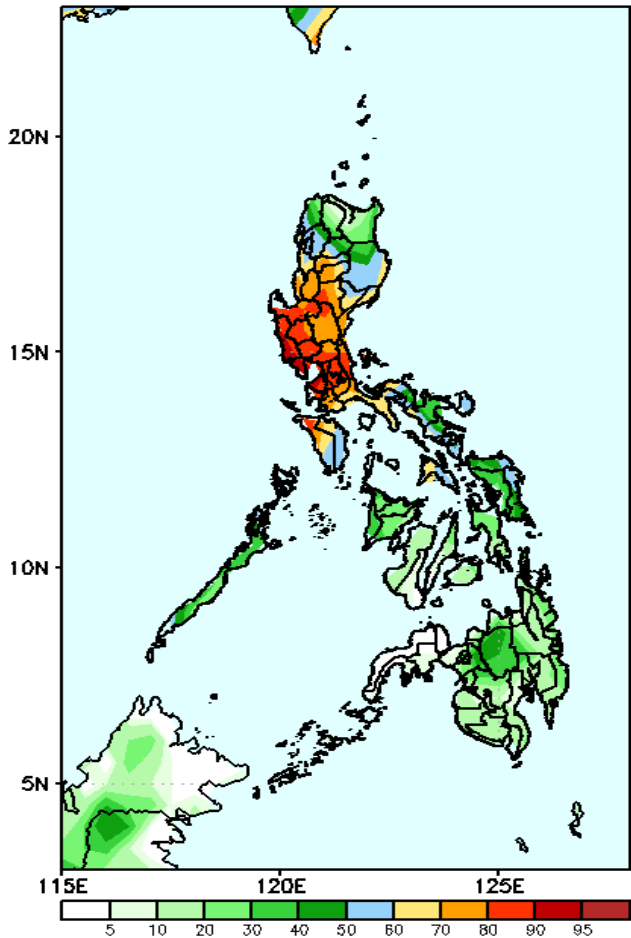


Increase of rainfall of up to 100mm is expected in most parts of Central & Southern Luzon, 40-80mm in Bicol Region, Eastern Visayas and southern Mindanao while rainfall deficit of 40-100 in Kalinga, Mt. Province and Apayao during the forecast period .

Exceedance Probability > 100/150/200 mm

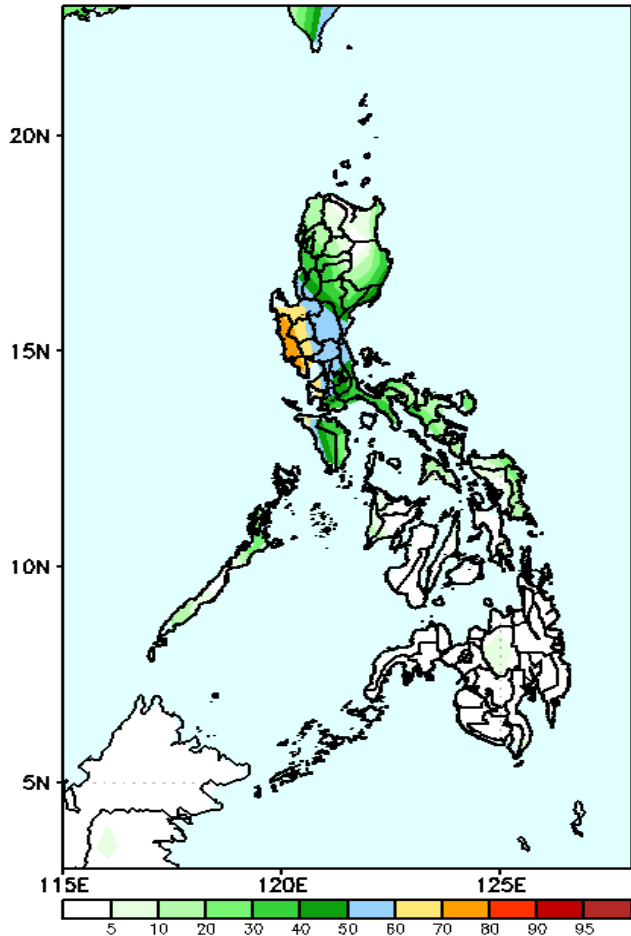
Week 1: Aug 05-11, 2022

GEFS Week-1 Exceedance Prob. > 100mm
Valid: 20220805 - 20220811



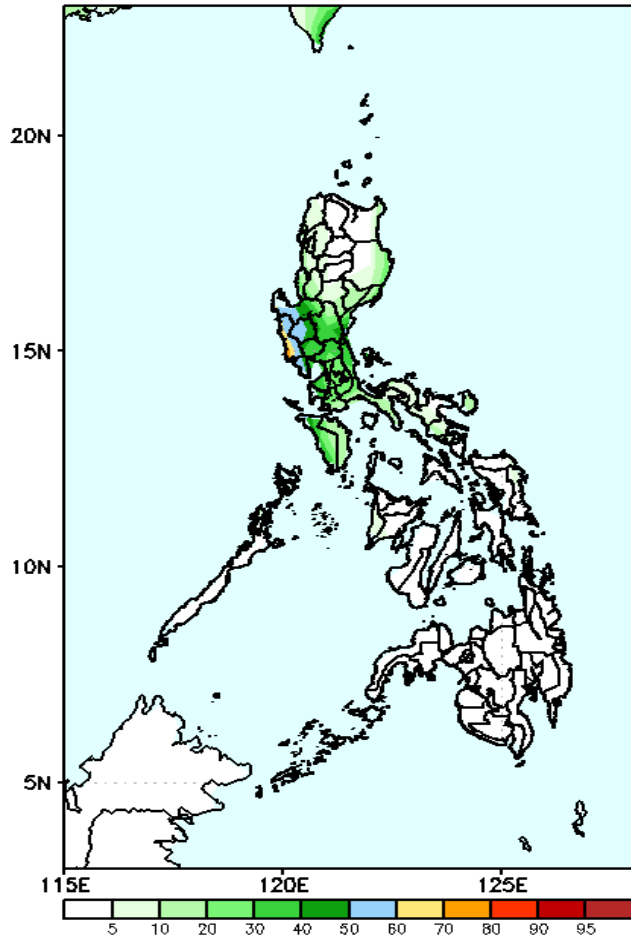
High probability of rainfall to exceed 100mm in most parts of Central & Southern Luzon while less likely for the rest of the country during the forecast period.

GEFS Week-1 Exceedance Prob. > 150mm
Valid: 20220805 - 20220811

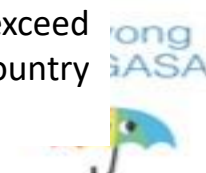


Low probability of rainfall to exceed 150mm in most parts of the country except in Pangasinan and Central Luzon where there is 60-80% chance during the forecast period.

GEFS Week-1 Exceedance Prob. > 200mm
Valid: 20220805 - 20220811



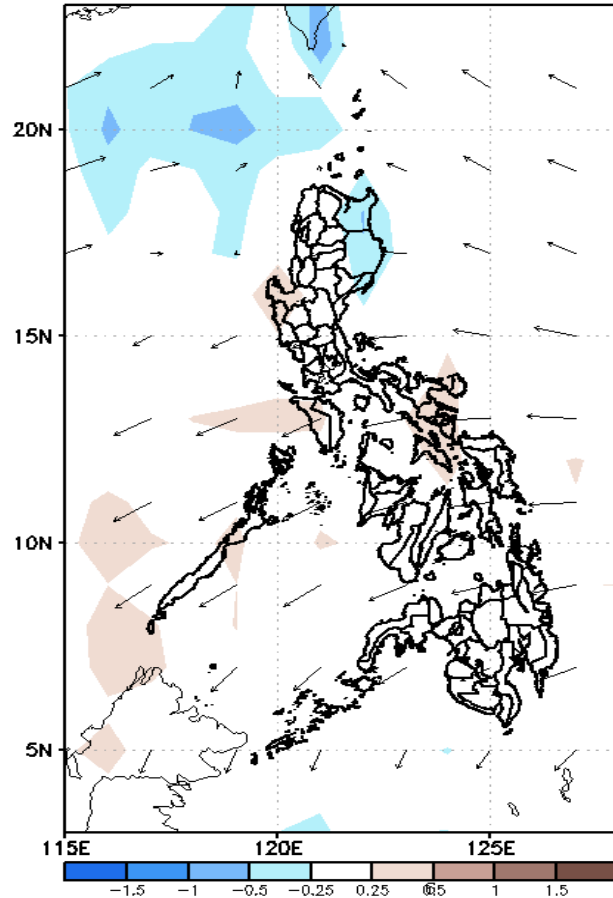
Low probability of rainfall to exceed 200mm in most parts of the country during the forecast period.



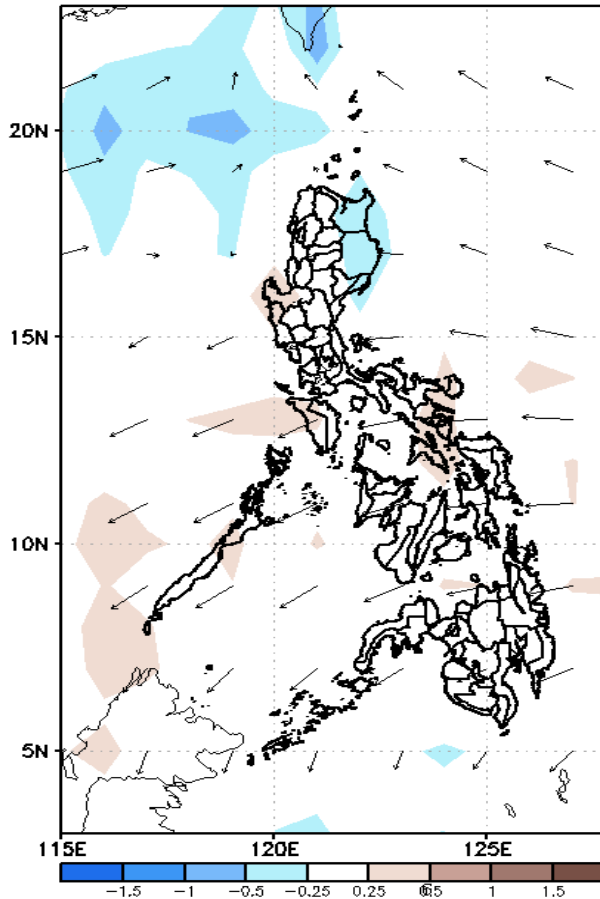
GEFS Week-2 Forecasts: Wind Anomaly Forecast

Week 2: Aug 12-18, 2022

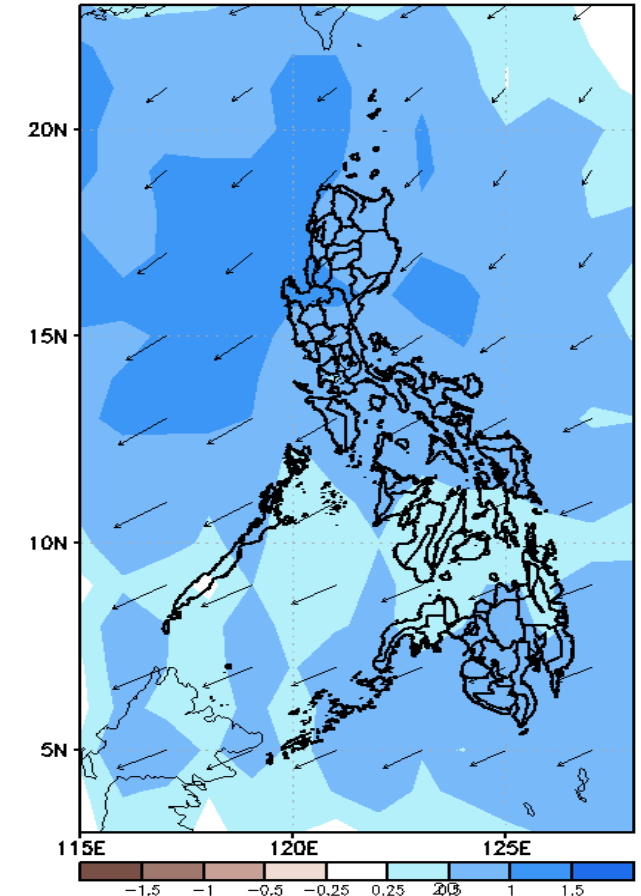
GEFS Week-2 850-hPa Divergence and Wind Anom
Valid: 20220812 - 20220818



GEFS Week-2 700-hPa Divergence and Wind Anom
Valid: 20220812 - 20220818



GEFS week-2 200-hPa Divergence and Wind Anom
Valid: 20220812 - 20220818

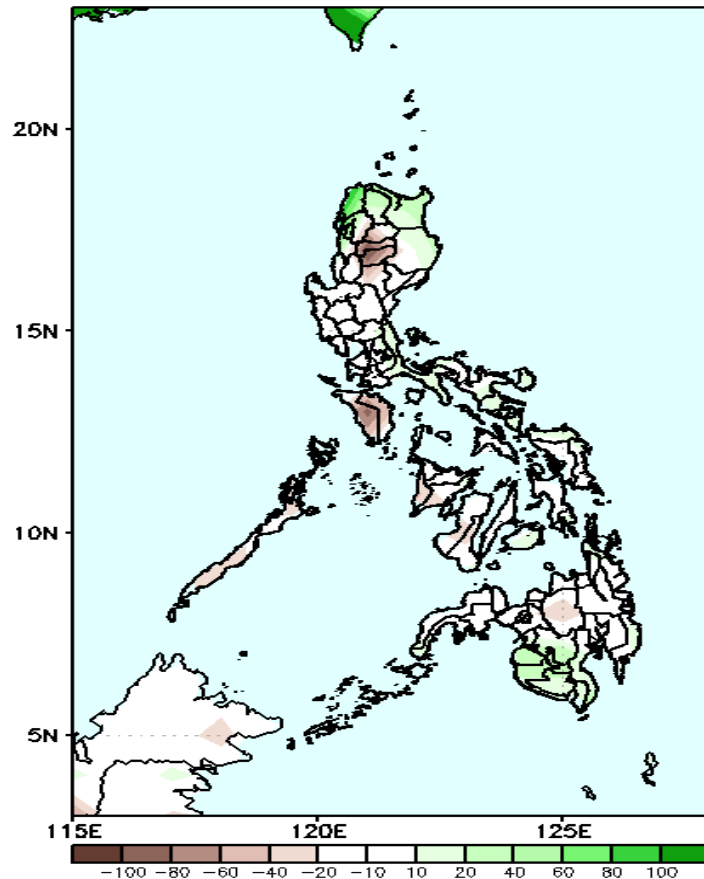


Southwest Monsoon affecting the Northern Luzon while Easterlies affecting the rest of the country during the forecast period.

Precipitation Anomaly and Exceedance Probability > 25/50 mm

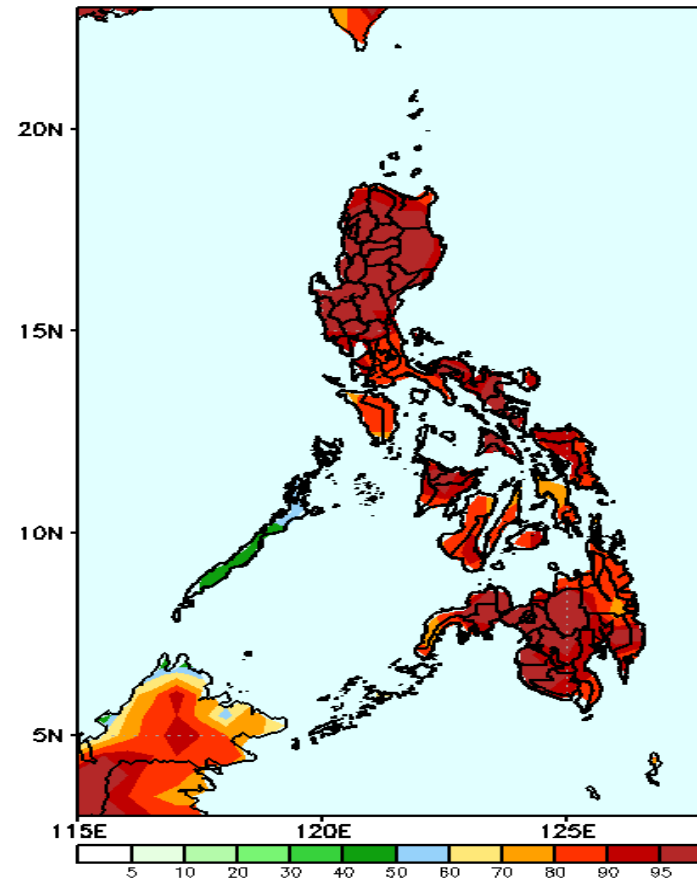
Week 2: Aug 12-18, 2022

GEFS Week-2 Precip Anomaly
Valid: 20220812 - 20220818



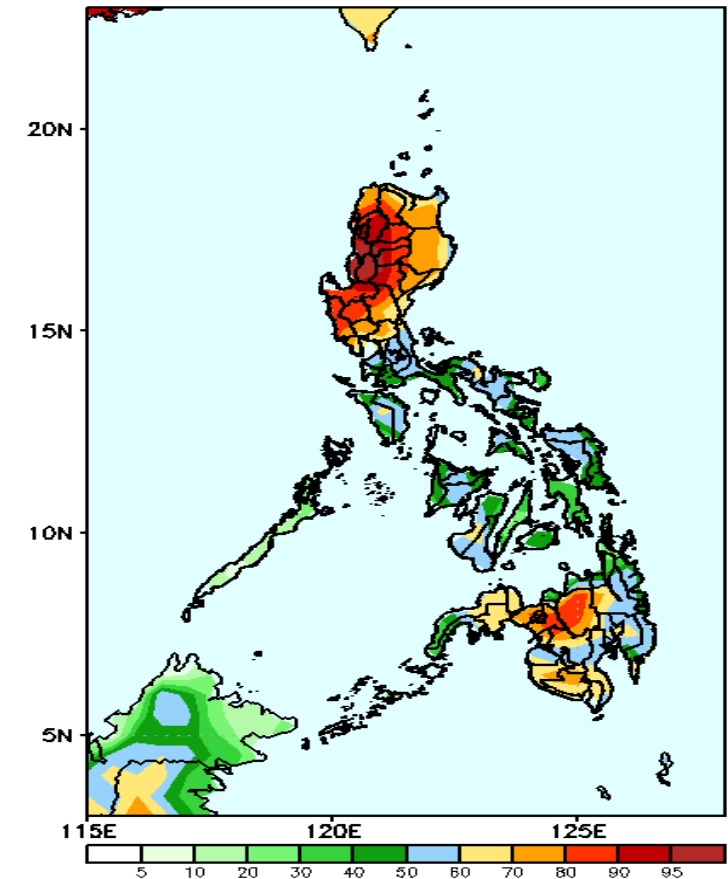
Rainfall deficit of 40-80 mm is expected in Mt. Province, Apayao and Mindoro while 40-60mm increase in southwestern Mindanao during the forecast period.

GEFS Week-2 Exceedance Prob. > 25mm
Valid: 20220812 - 20220818



High probability of rainfall to exceed 25mm in most parts of the country during the forecast period.

GEFS Week-2 Exceedance Prob. > 50mm
Valid: 20220812 - 20220818

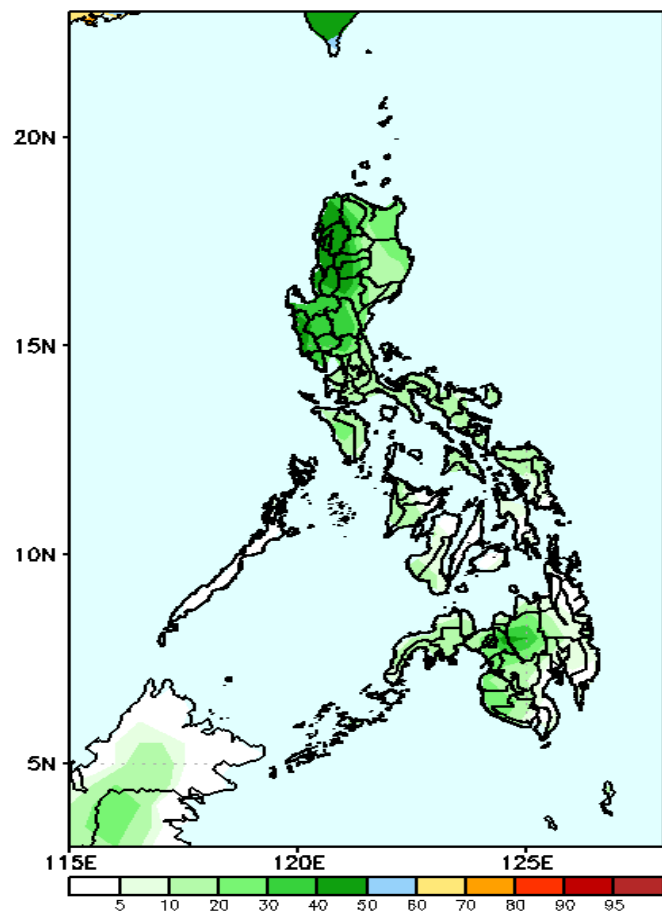


High probability of rainfall to exceed 50mm in most parts of Luzon and Mindanao while 50-65% chance in Visayas during the forecast period.

Exceedance Probability > 100/150/200 mm

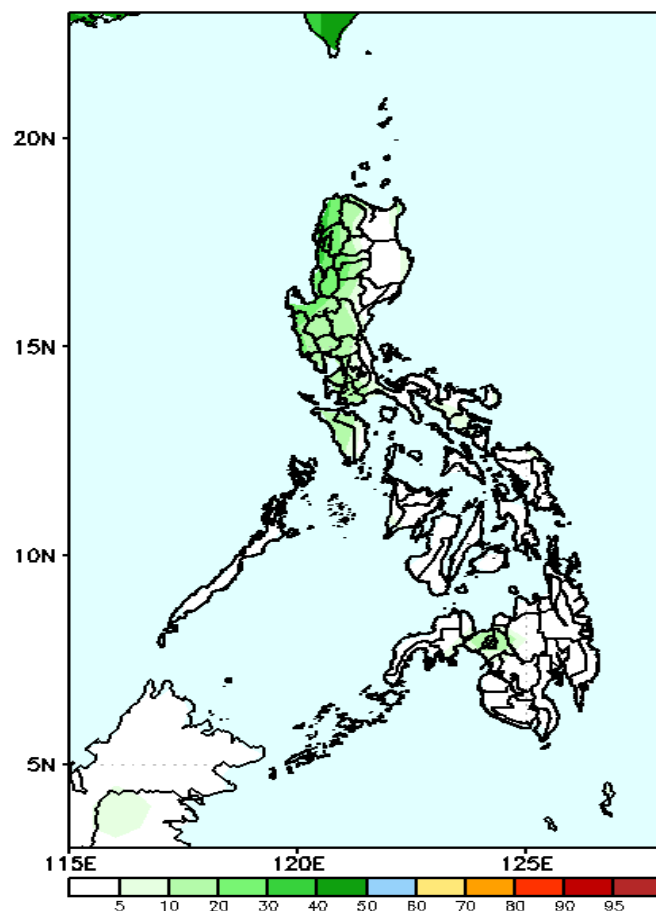
Week 2: Aug 12-18, 2022

GEFS Week-2 Exceedance Prob. > 100mm
Valid: 20220812 – 20220818



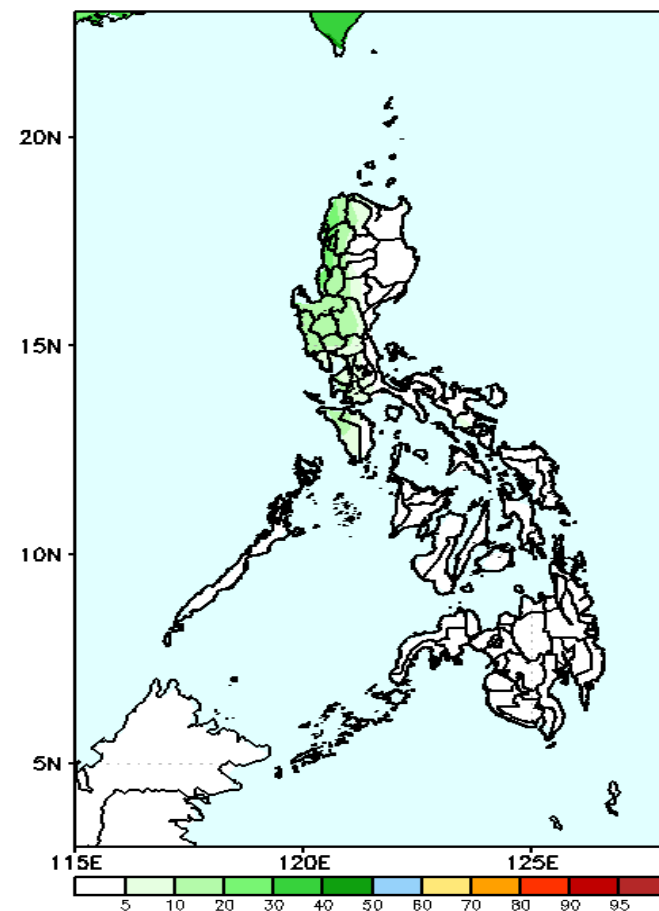
Low probability of rainfall to exceed 100mm in most parts of the country during the forecast period.

GEFS Week-2 Exceedance Prob. > 150mm
Valid: 20220812 – 20220818



Low probability of rainfall to exceed 150mm in most parts of the country during the forecast period.

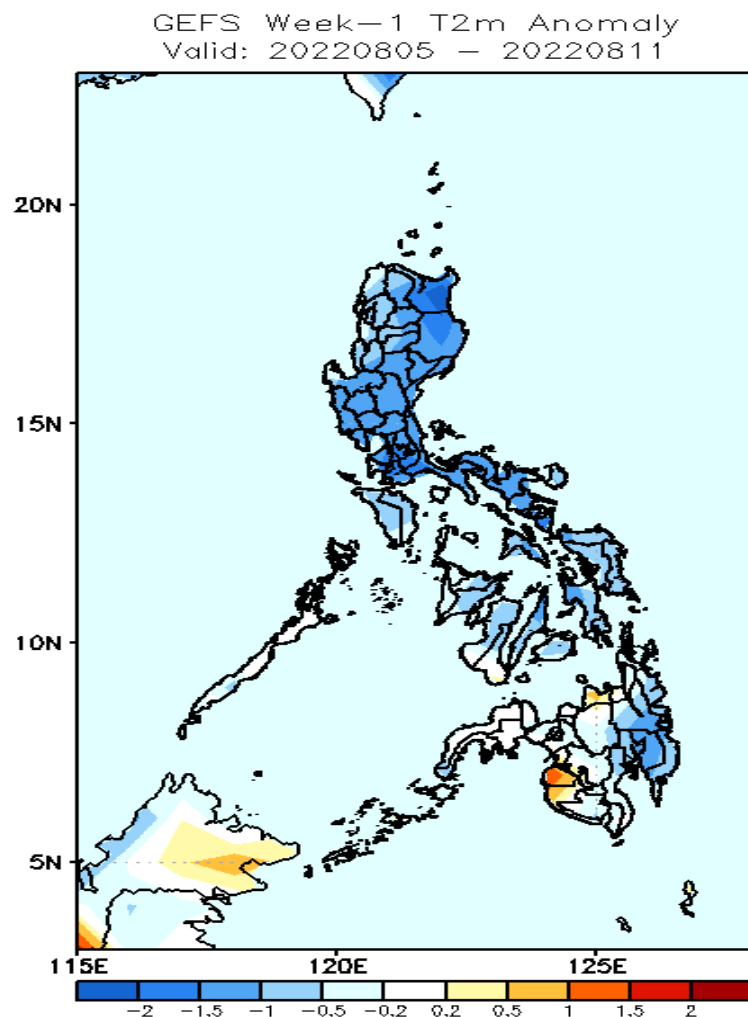
GEFS Week-2 Exceedance Prob. > 200mm
Valid: 20220812 – 20220818



Low probability of rainfall to exceed 200mm in most parts of the country during the forecast period.

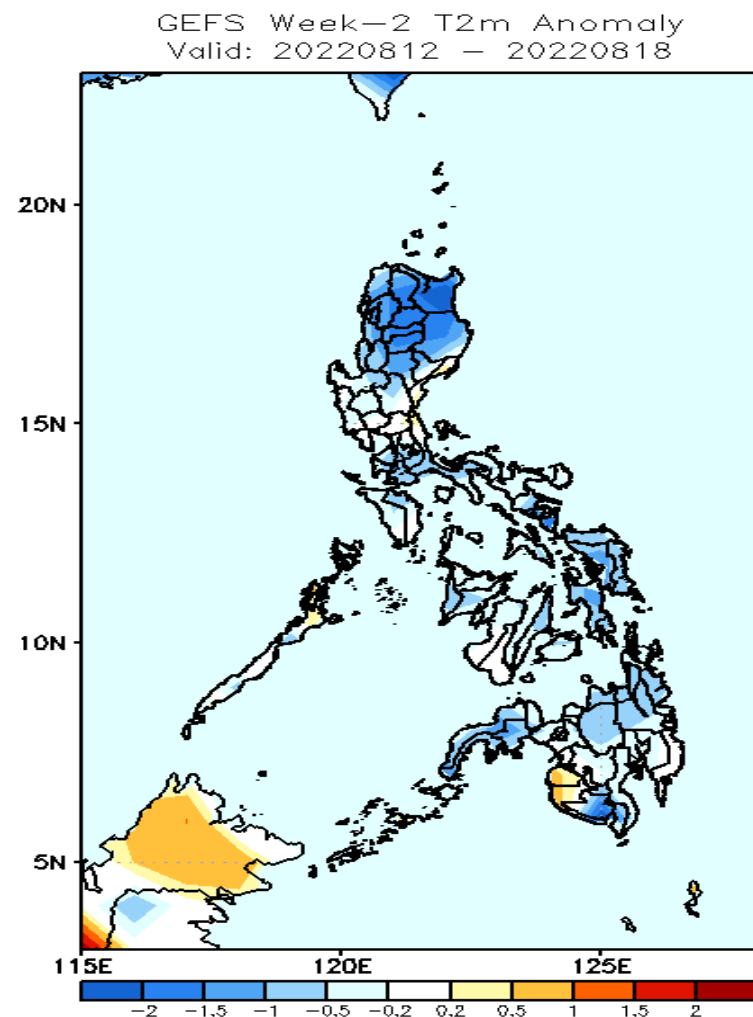


GEFS Week-1 & 2 Forecasts: T2m Anomaly



2m Temperature Week 1: Aug 05-11, 2022

Slightly cooler to cooler than average surface air temperature will likely experience in most parts of the country except in western parts of Mindanao where near to slightly warmer is expected during the forecast period.



2m Temperature Week 2: Aug 12-18, 2022

Slightly cooler to cooler than average surface air temperature will likely experience in most parts of the country except in Central Luzon, Mindoro, Negros Island and Davao Region where near to slightly warmer is expected during the forecast period.