



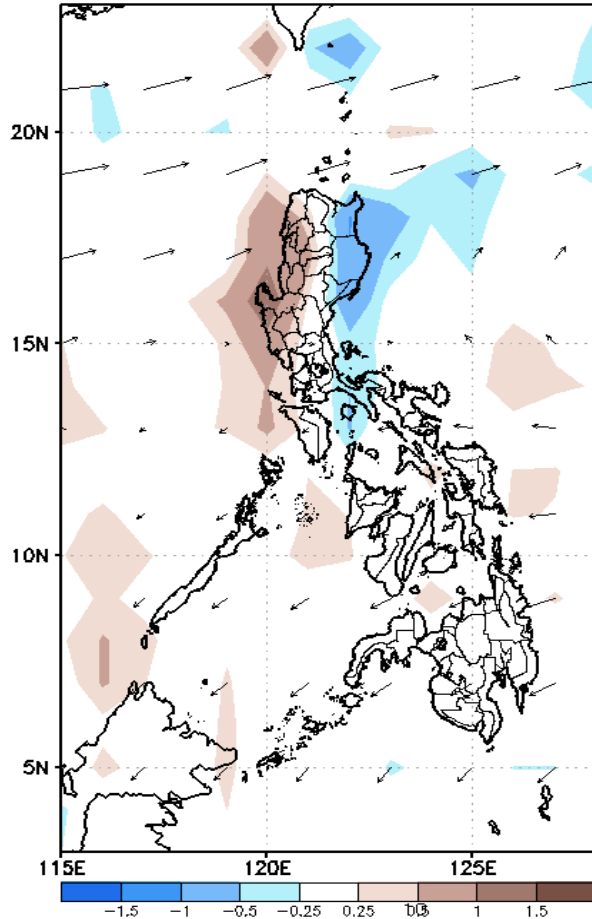
Week 1 & Week 2 Forecast for the Philippines using GEFS Model



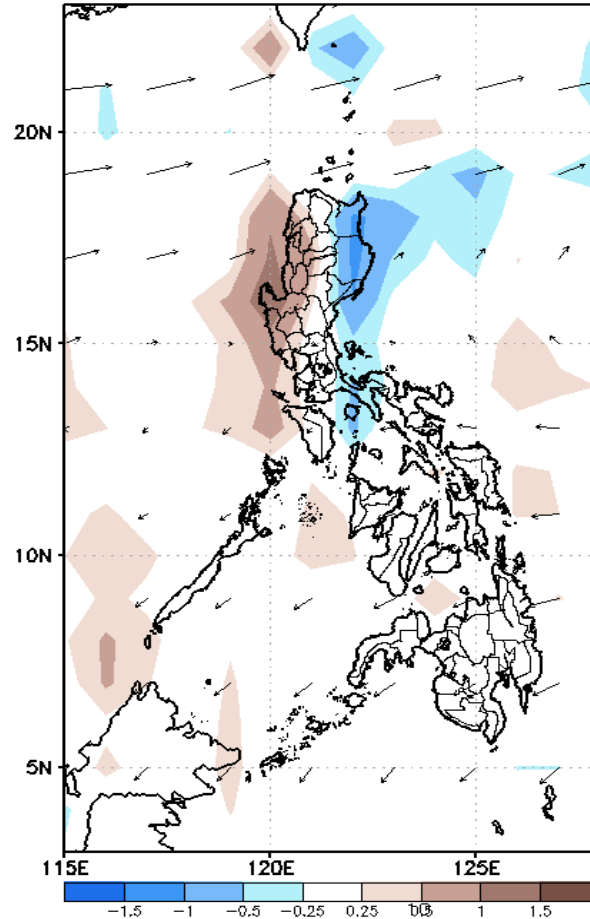
GEFS Week-1 Forecasts: Divergence & Wind Anomaly

Week 1: Aug 05-11, 2021

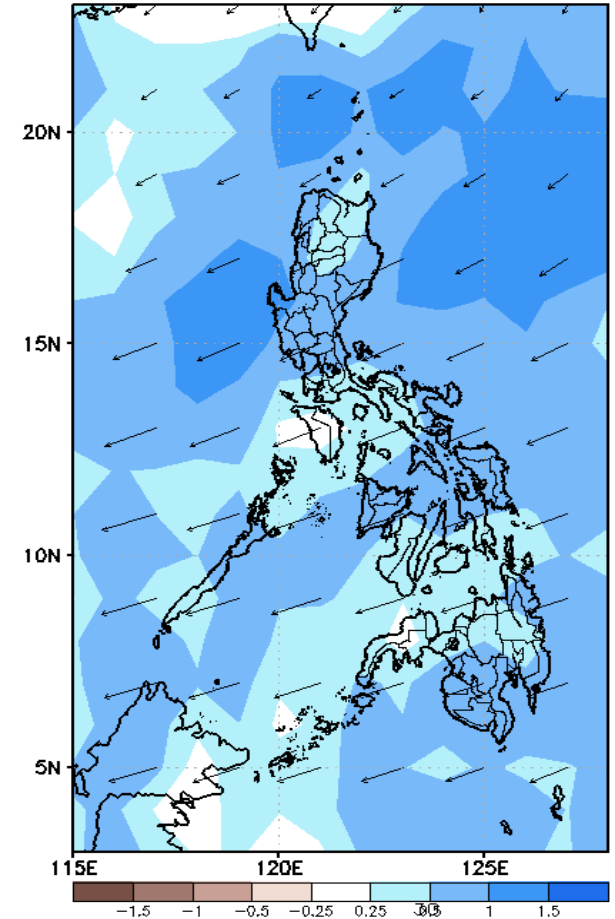
GEFS Week-1 850-hPa Divergence and Wind Anomoc
Valid: 20210805 - 20210811



GEFS Week-1 700-hPa Divergence and Wind Anomoc
Valid: 20210805 - 20210811



GEFS Week-1 200-hPa Divergence and Wind Anomoc
Valid: 20210805 - 20210811

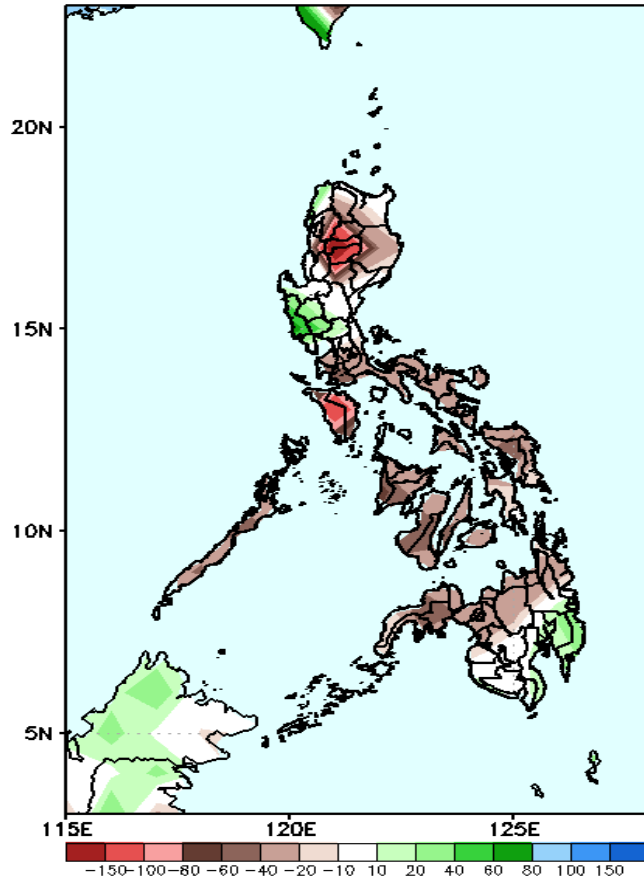


Upper and low level Divergence suggest likelihood of precipitation most parts of the country. Southwest monsoon affecting the Luzon and western Visayas. Easterlies affecting the rest of the country. Attributing to light to moderate rains especially in the western sections of Luzon and Visayas during the forecast period.

Precipitation Anomaly and Exceedance Probability > 25/50 mm

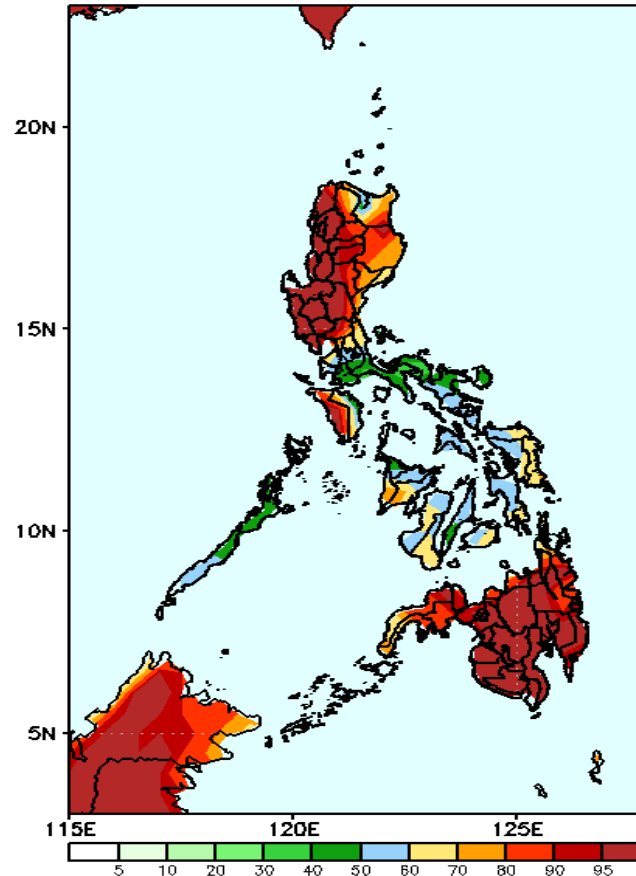
Week 1: Aug 05-11, 2021

GEFS Week-1 Precip. Anomaly
Valid: 20210805 - 20210811



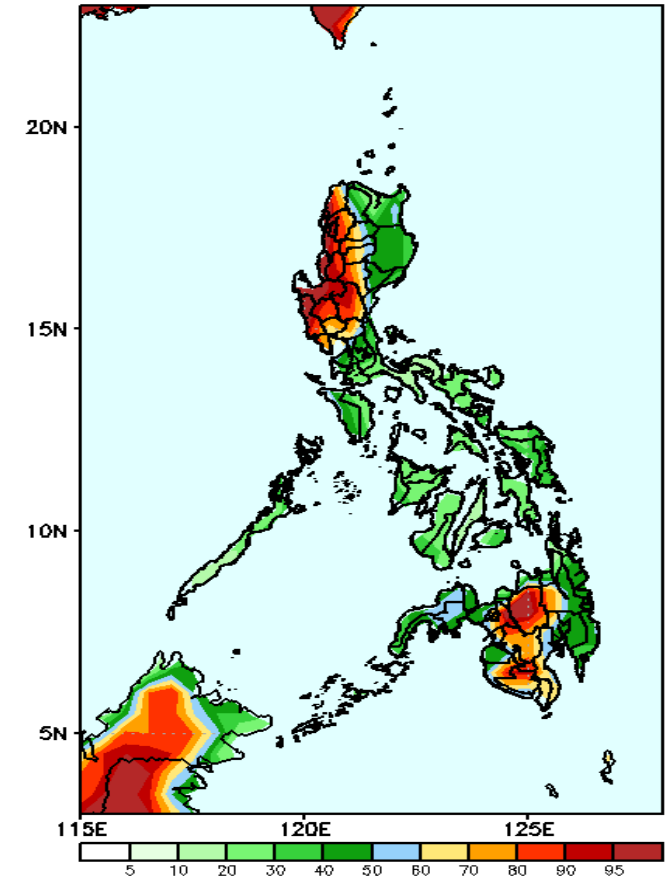
Rainfall deficit of 60-150mm is expected in most parts of the country (especially in Cordillera Region & Mindoro) except in Central Luzon and Davao Region where there is 40-80mm increase of rainfall during the forecast period.

GEFS Week-1 Exceedance Prob. > 25mm
Valid: 20210805 - 20210811



High probability of rainfall to exceed 25mm in most parts of Luzon and Mindanao while 50-80% probability in Visayas during the forecast period.

GEFS Week-1 Exceedance Prob. > 50mm
Valid: 20210805 - 20210811

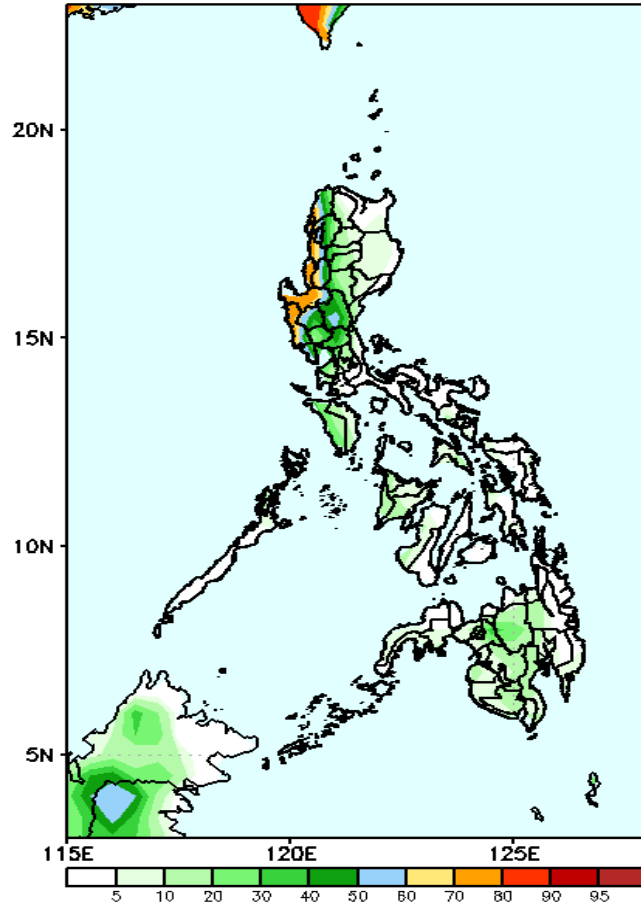


High probability of rainfall to exceed 50mm in western & central parts of Luzon, Bukidnon and most parts of SOCCSKSARGEN while less likely for the rest of the country during the forecast period.

Exceedance Probability > 100/150/200 mm

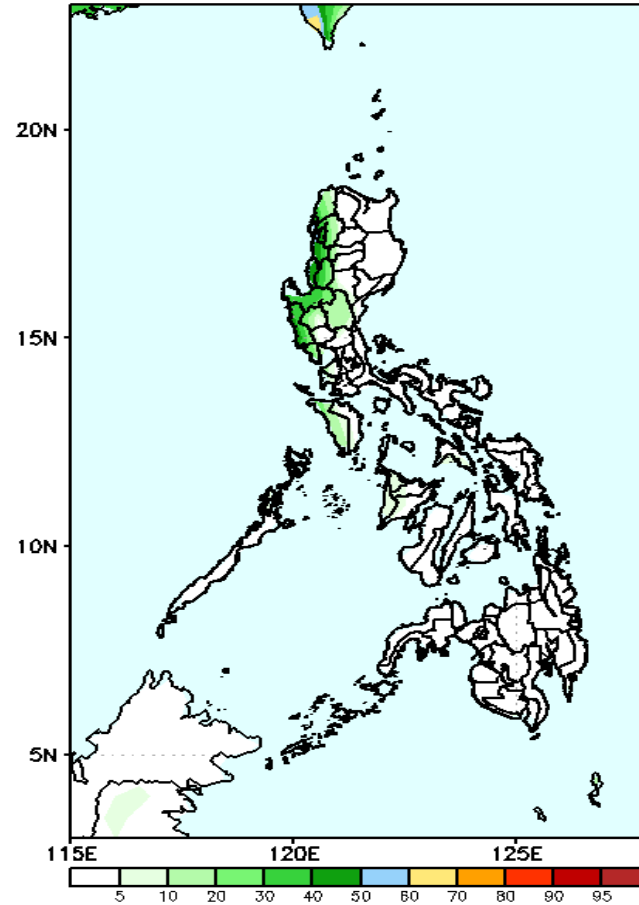
Week 1: Aug 05-11, 2021

GEFS Week-1 Exceedance Prob. > 100mm
Valid: 20210805 - 20210811



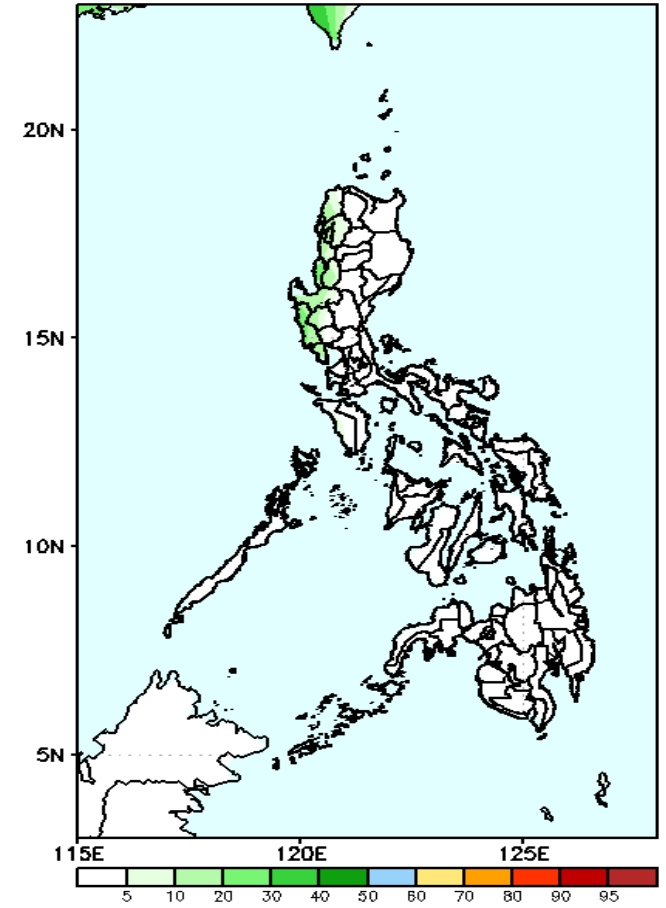
50-80% probability of rainfall to exceed 100mm in Ilocos Region while less likely for the rest of the country during the forecast period.

GEFS Week-1 Exceedance Prob. > 150mm
Valid: 20210805 - 20210811



Less probability of rainfall to exceed 150mm in most parts of the country is expected during the forecast period.

GEFS Week-1 Exceedance Prob. > 200mm
Valid: 20210805 - 20210811



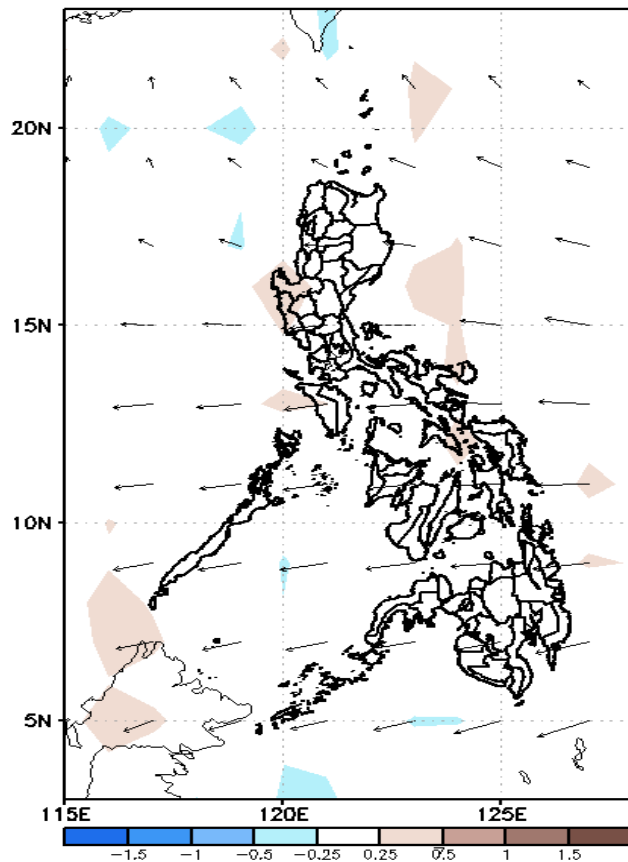
Less probability of rainfall to exceed 200mm in most parts of the country is expected during the forecast period.

ng
SA

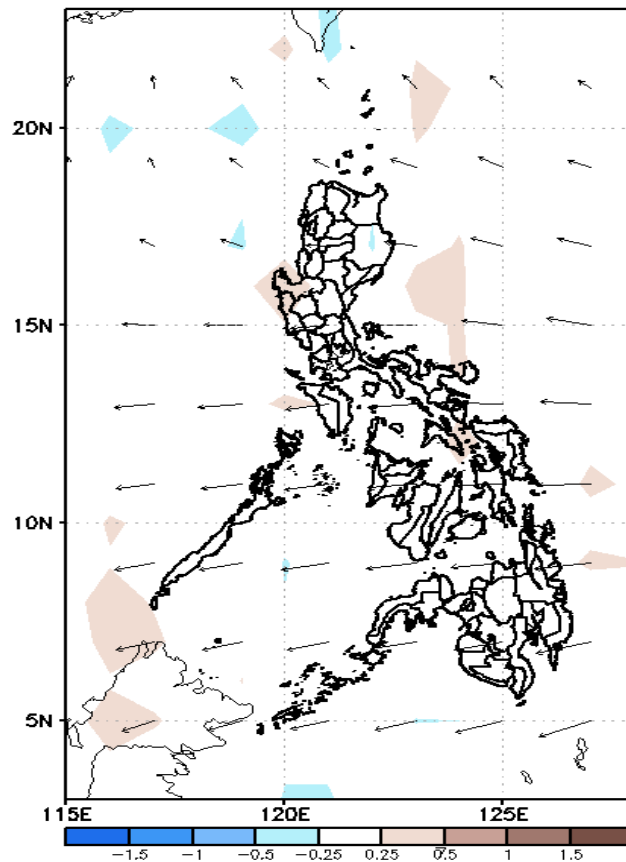
GEFS Week-2 Forecasts: Divergence & Wind Anomaly

Week 2: Aug 12-18, 2021

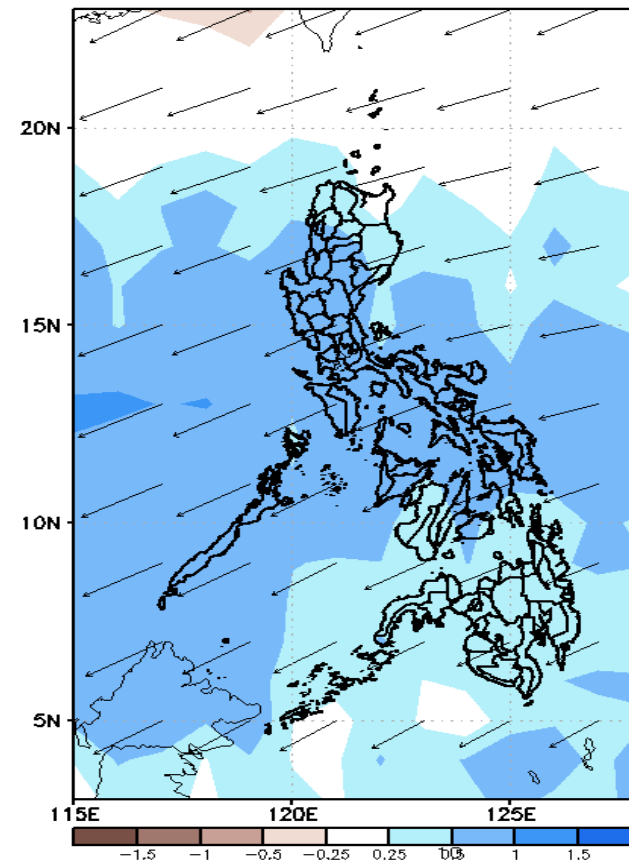
GEFS Week-2 850-hPa Divergence and Wind Anom
Valid: 20210812 - 20210818



GEFS Week-2 700-hPa Divergence and Wind Anom
Valid: 20210812 - 20210818



GEFS week-2 200-hPa Divergence and Wind Anom
Valid: 20210812 - 20210818



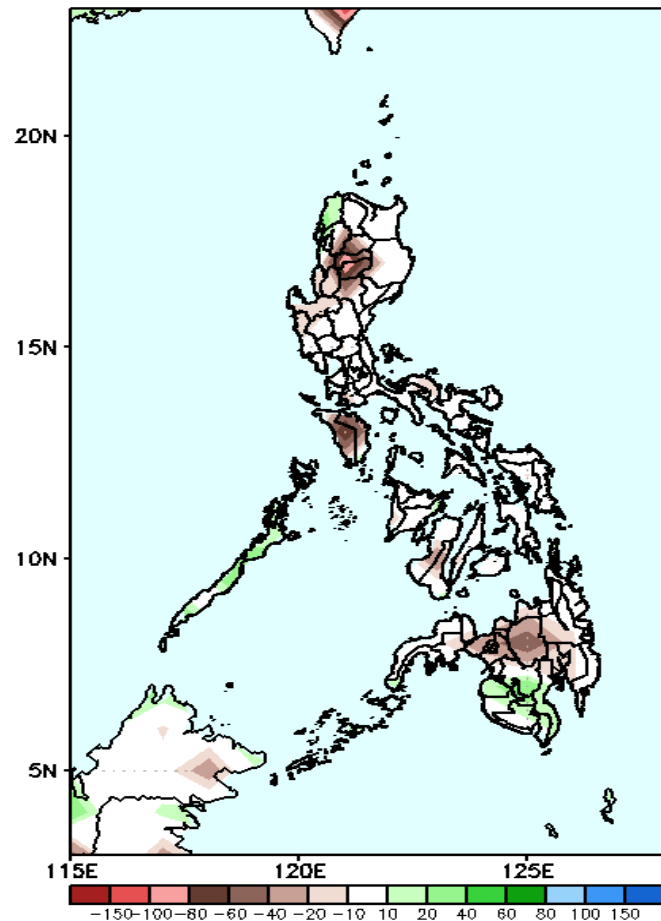
Upper and low level Divergence suggest likelihood of precipitation in most parts of the country. Easterlies affecting the country. Attributing to light to moderate rains due to thunderstorms during the forecast period.



Precipitation Anomaly and Exceedance Probability > 25/50 mm

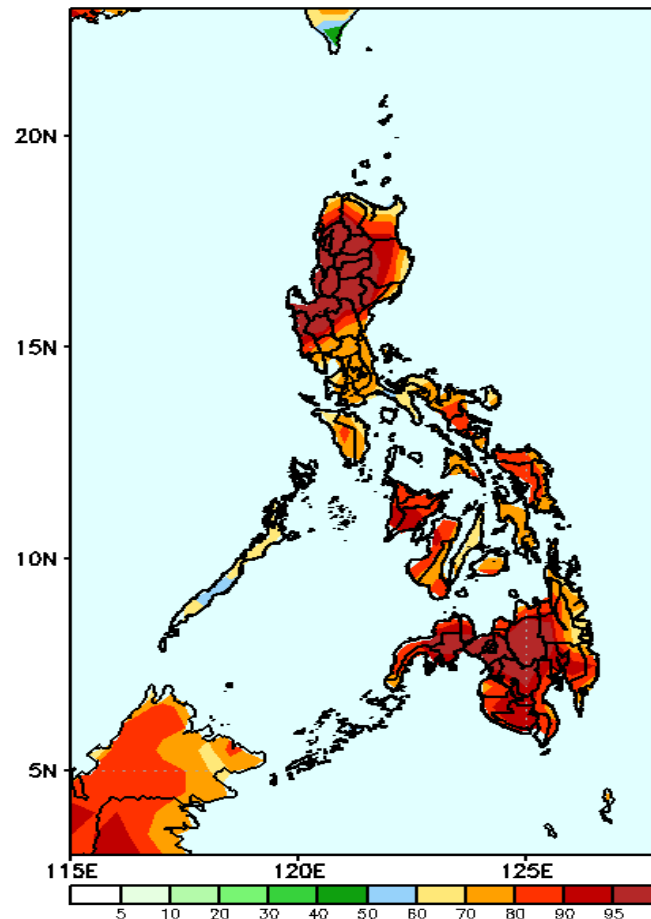
Week 2: Aug 12-18, 2021

GEFS Week-2 Precip Anomaly
Valid: 20210812 - 20210818



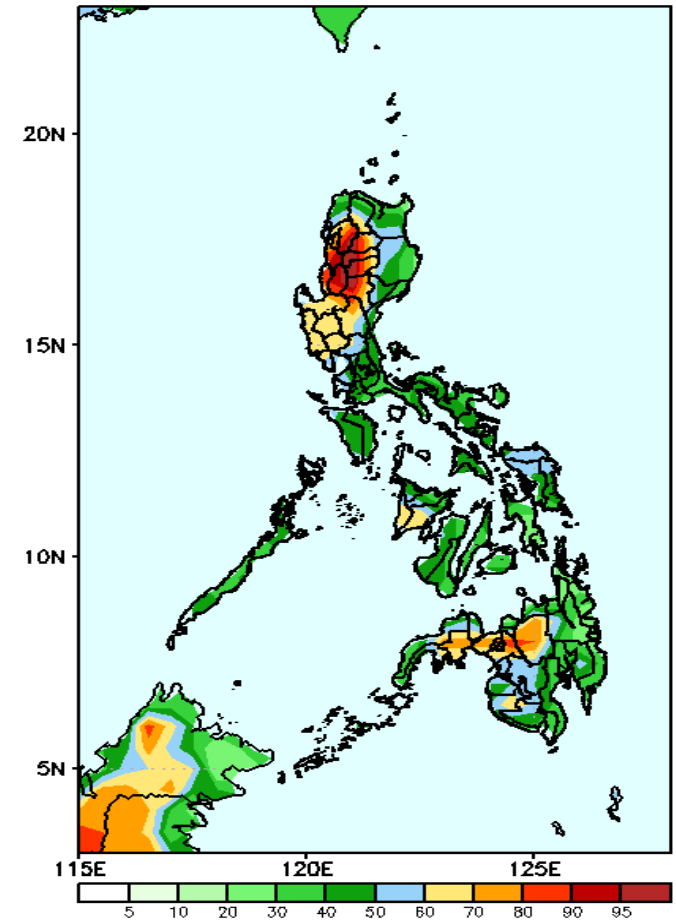
Rainfall deficit of 40-100mm is expected in Cordillera Region, Mindoro and Bukidnon during the forecast period.

GEFS Week-2 Exceedance Prob. > 25mm
Valid: 20210812 - 20210818



High probability of rainfall to exceed 25mm in most parts of the country is expected during the forecast period

GEFS Week-2 Exceedance Prob. > 50mm
Valid: 20210812 - 20210818

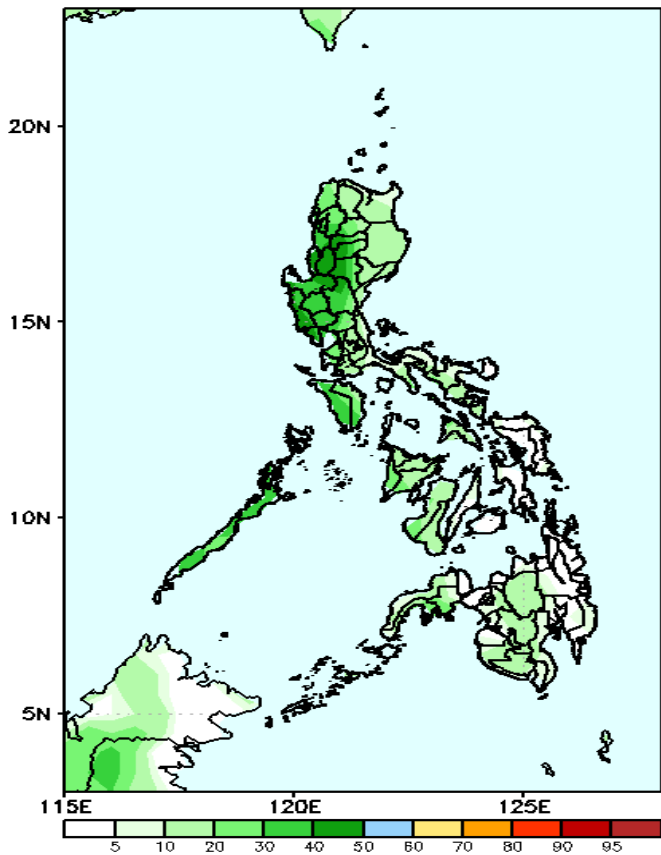


High probability of rainfall to exceed 50mm in Ilocos & Cordillera Region, Central Luzon, Bukidnon, Lanao Zamboanga del Sur while less likely for the rest of the country during the forecast period.

Exceedance Probability > 100/150/200 mm

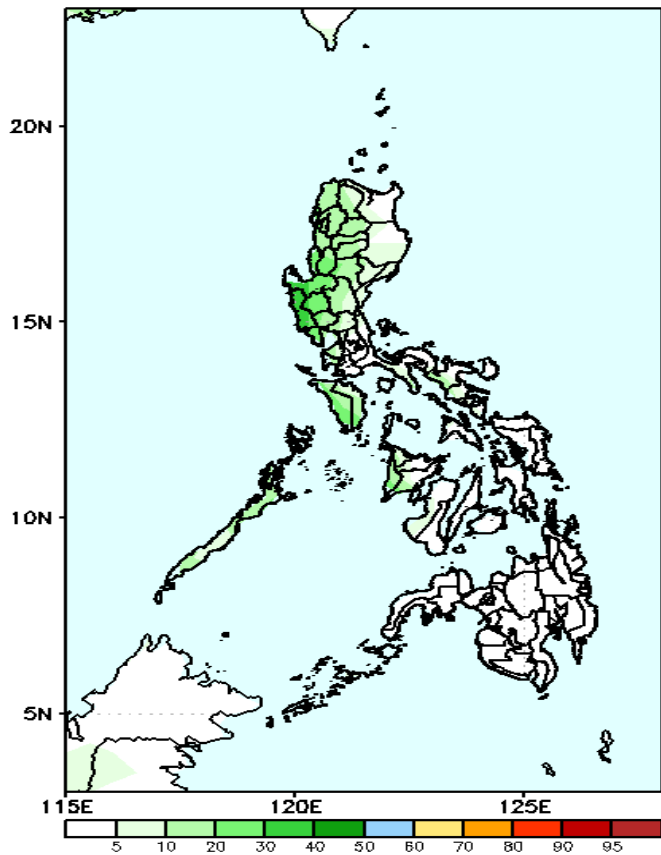
Week 2: Aug 12-18, 2021

GEFS Week-2 Exceedance Prob. > 100mm
Valid: 20210812 - 20210818



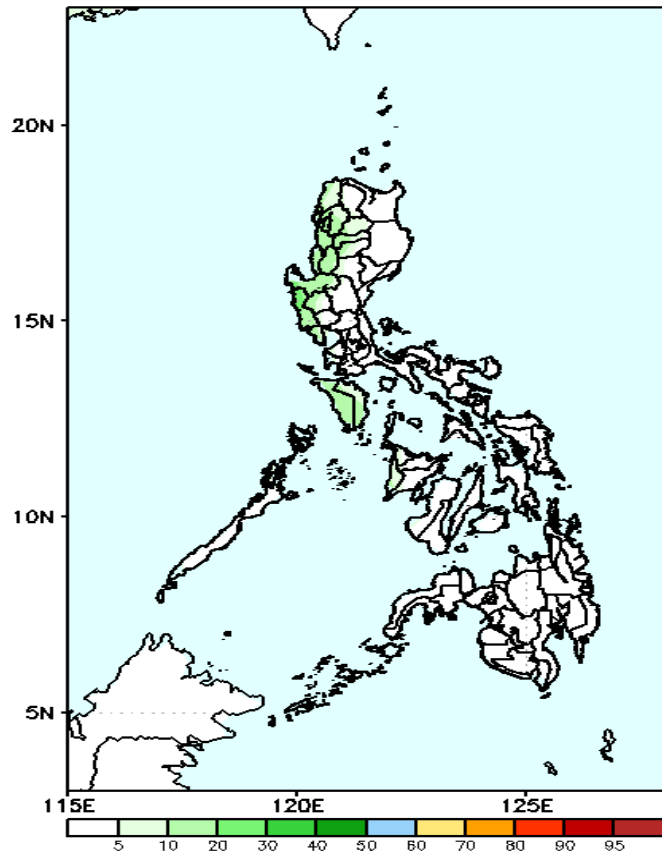
Less probability of rainfall to exceed 100mm in most parts of the country is expected during the forecast period.

GEFS Week-2 Exceedance Prob. > 150mm
Valid: 20210812 - 20210818



Less probability of rainfall to exceed 150mm in most parts of the country is expected during the forecast period.

GEFS Week-2 Exceedance Prob. > 200mm
Valid: 20210812 - 20210818

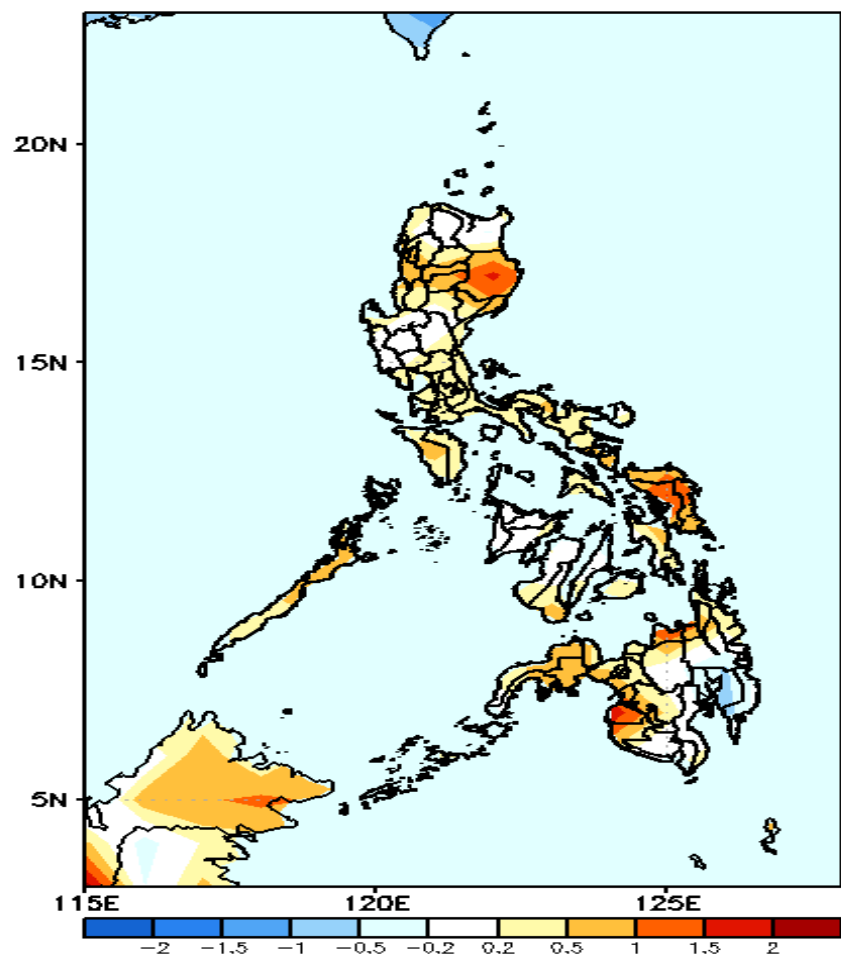


Less probability of rainfall to exceed 200mm in most parts of the country is expected during the forecast period.



GEFS Week-1 & 2 Forecasts: T2m Anomaly

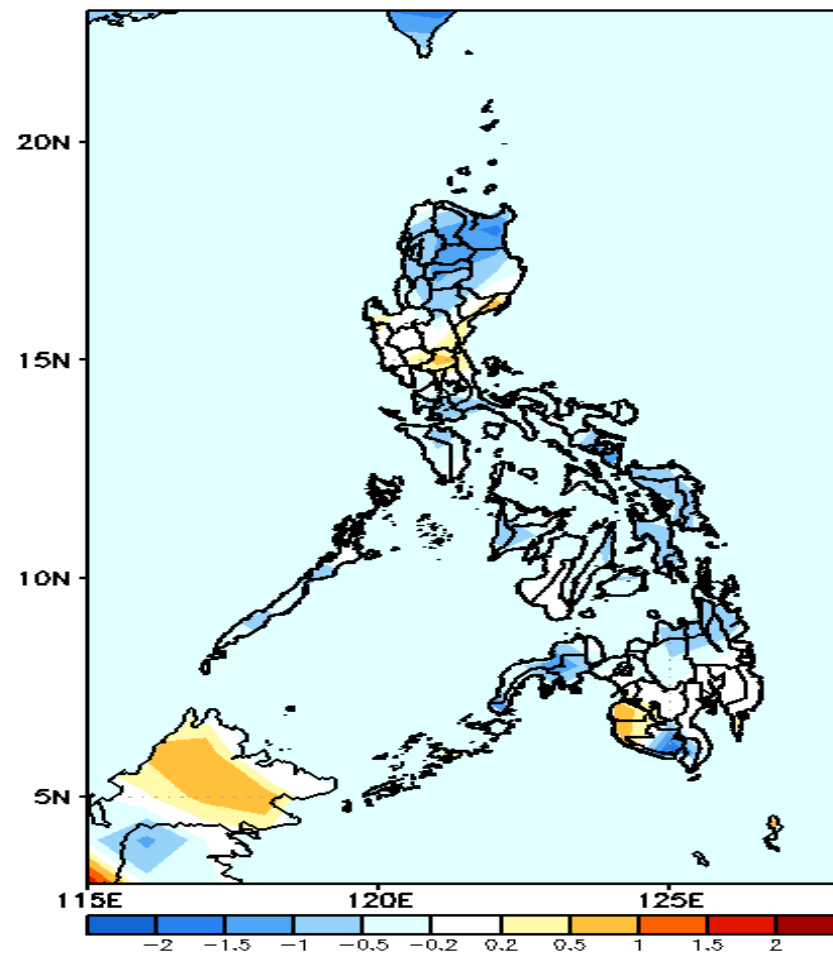
GEFS Week-1 T2m Anomaly
Valid: 20210805 – 20210811



2m Temperature Week 1: Aug 05-11, 2021

Slightly warmer to warmer than average surface air temperature will likely experience in Isabela, Cordillera Region, Mindoro, Eastern Visayas and northern & western Mindanao while average surface air temperature for the rest of the country during the forecast period.

GEFS Week-2 T2m Anomaly
Valid: 20210812 – 20210818



2m Temperature Week 2: Aug 12-18, 2021

Slightly cooler to cooler than average surface air temperature will likely experience in most parts of the country during the forecast period.