



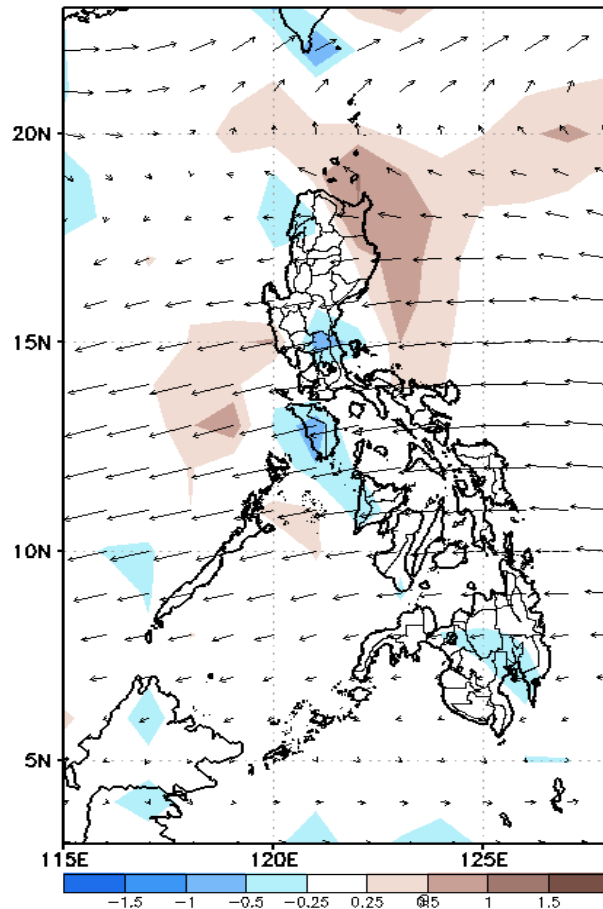
# Week 1 & Week 2 Forecast for the Philippines using GEFS Model



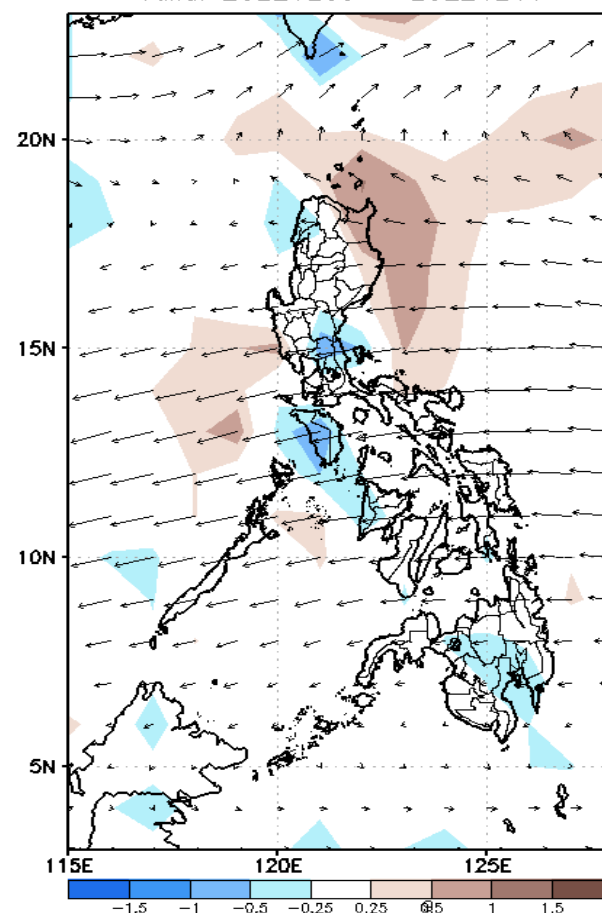
# GEFS Week-1 Forecasts: Wind Anomaly Forecast

Week 1: Dec 05-11, 2022

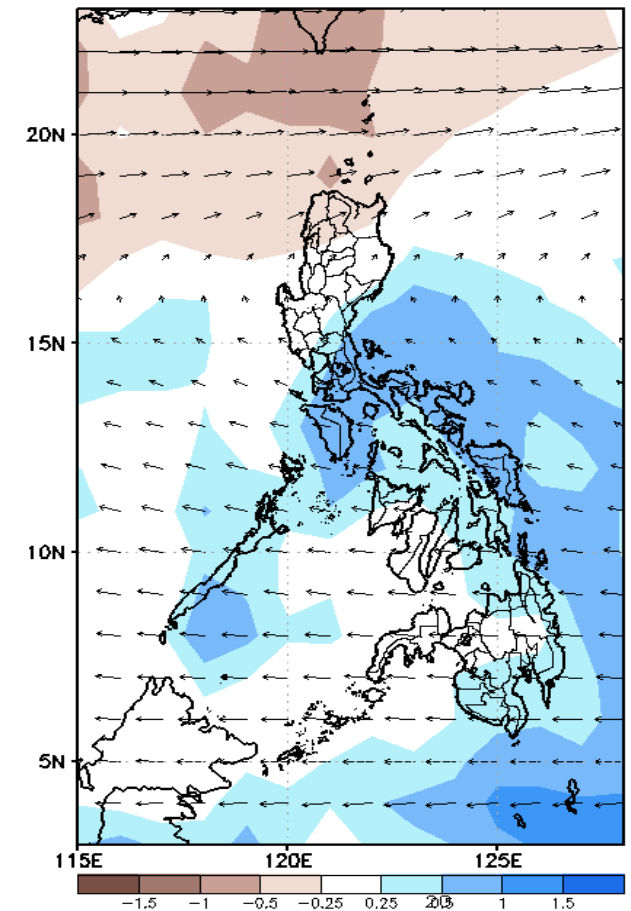
GEFS Week-1 850-hPa Divergence and Wind Anom  
Valid: 20221205 - 20221211



GEFS Week-1 700-hPa Divergence and Wind Anom  
Valid: 20221205 - 20221211



GEFS Week-1 200-hPa Divergence and Wind Anom  
Valid: 20221205 - 20221211



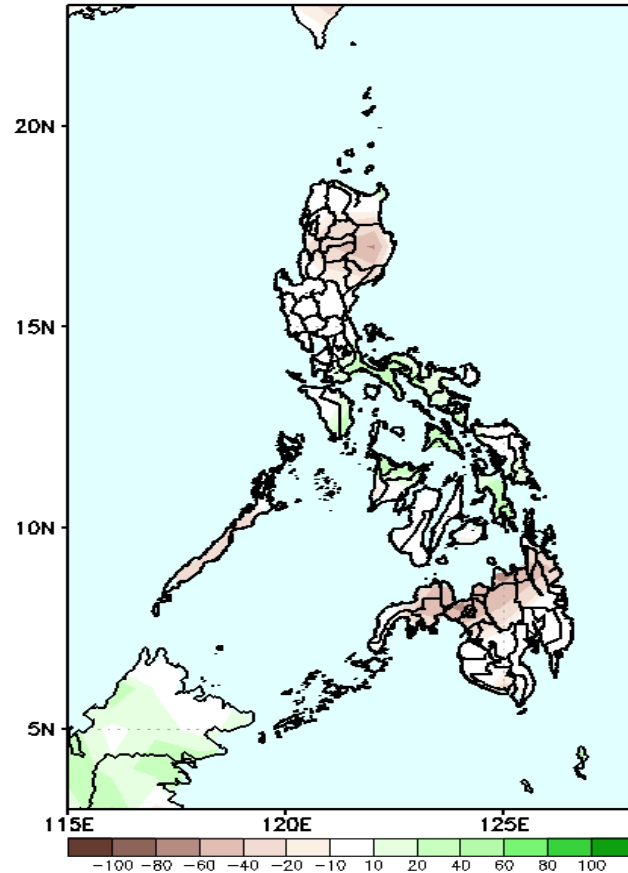
Northeast Monsoon is forecasted to continue affecting Northern and Extreme Northern Luzon; Easterlies affecting the rest of the country during the forecast period.



# Precipitation Anomaly and Exceedance Probability > 25/50 mm

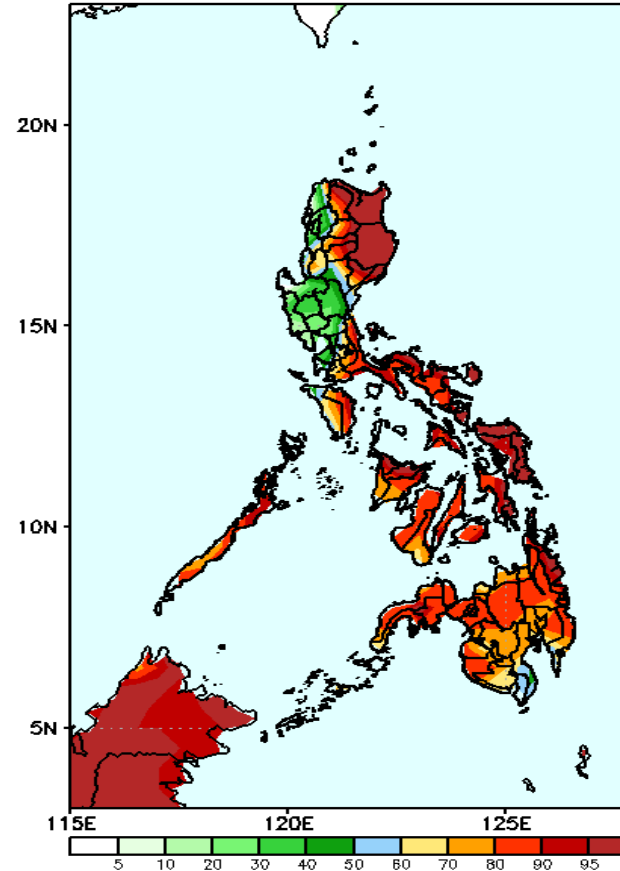
Week 1: Dec 05-11, 2022

GEFS Week-1 Precip Anomaly  
Valid: 20221205 - 20221211



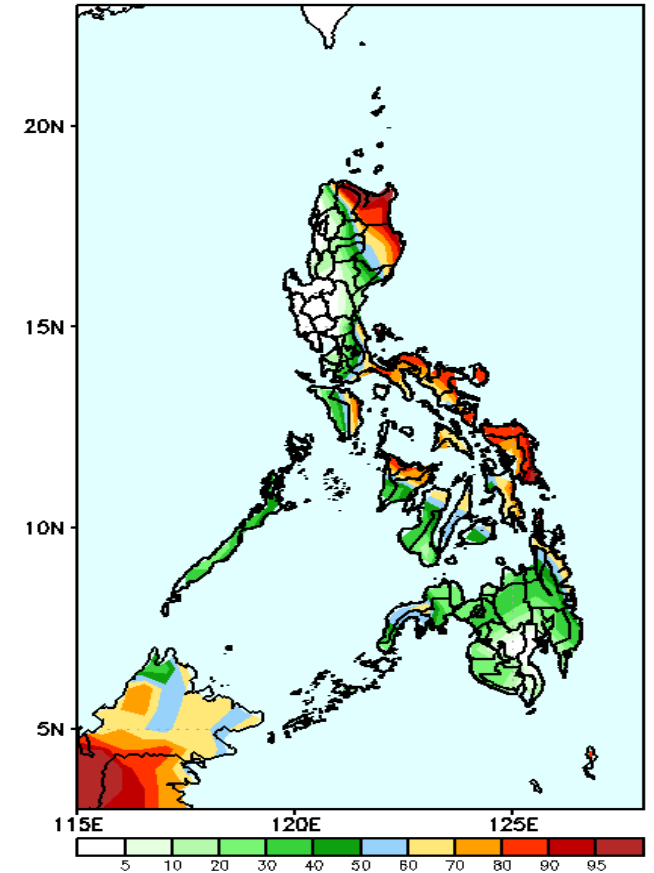
Rainfall deficit of 20-60mm in Isabela, CAR and northern Mindanao while 20-60mm increase of rainfall in some areas in southern Luzon, Central Visayas and eastern Panay Island during the forecast period.

GEFS Week-1 Exceedance Prob. > 25mm  
Valid: 20221205 - 20221211



High probability of rainfall to exceed 25mm in most parts of the country except in some areas in western and central Luzon during the forecast period.

GEFS Week-1 Exceedance Prob. > 50mm  
Valid: 20221205 - 20221211

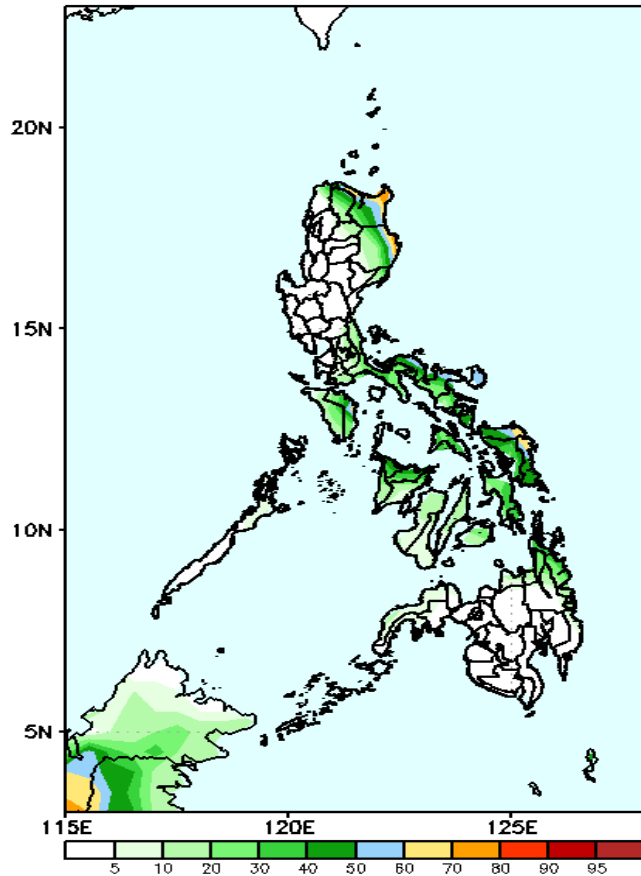


High probability of rainfall to exceed 50mm in Apayao, Cagayan, Isabela, Quezon, Or. Mindoro, Bicol Region, Eastern and central Visayas and eastern parts of Panay & Negros Island while less likely for the rest of the country during the forecast period.

# Exceedance Probability > 100/150/200 mm

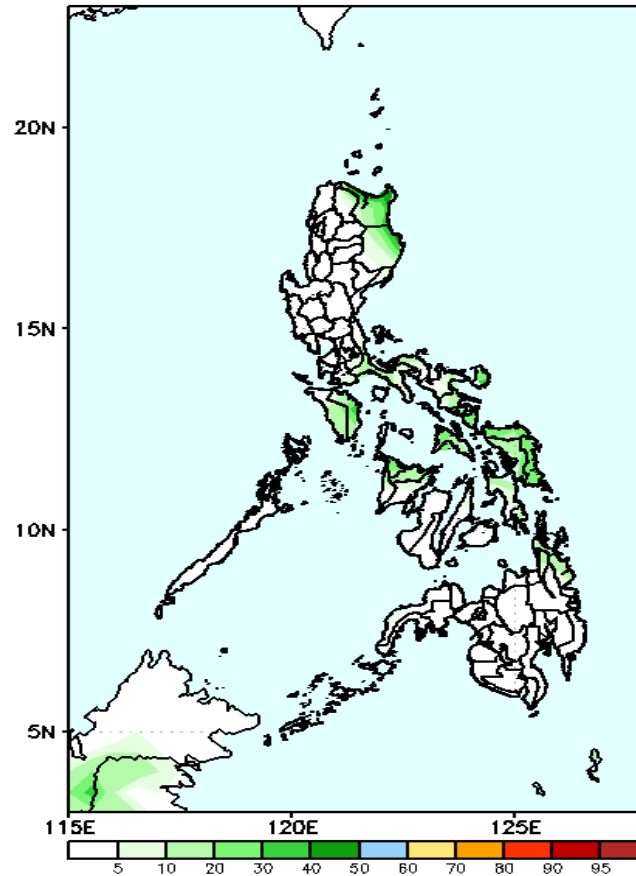
Week 1: Dec 05-11, 2022

GEFS Week-1 Exceedance Prob. > 100mm  
Valid: 20221205 - 20221211



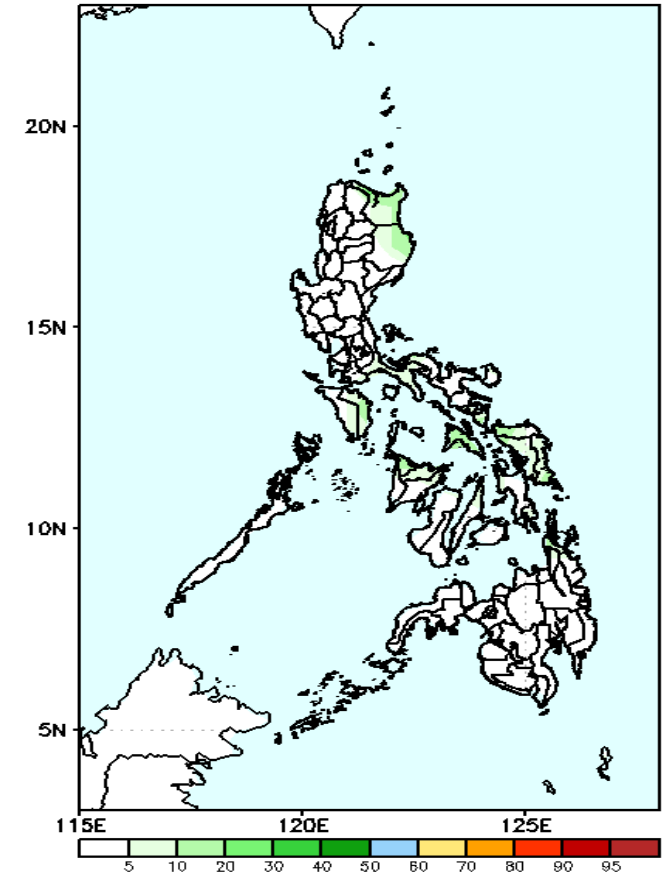
Low probability of rainfall to exceed 100mm in most parts of the country except in Cagayan, Isabela and eastern parts of Samar (50-75% chance) during the forecast period.

GEFS Week-1 Exceedance Prob. > 150mm  
Valid: 20221205 - 20221211



Low probability of rainfall to exceed 150mm in most parts of the country during the forecast period.

GEFS Week-1 Exceedance Prob. > 200mm  
Valid: 20221205 - 20221211

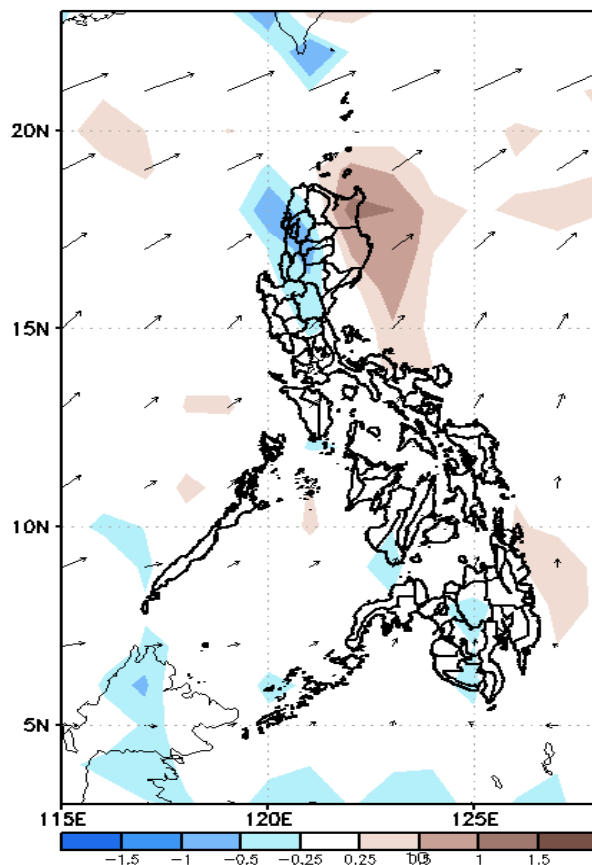


Low probability of rainfall to exceed 200mm in most parts of the country during the forecast period.

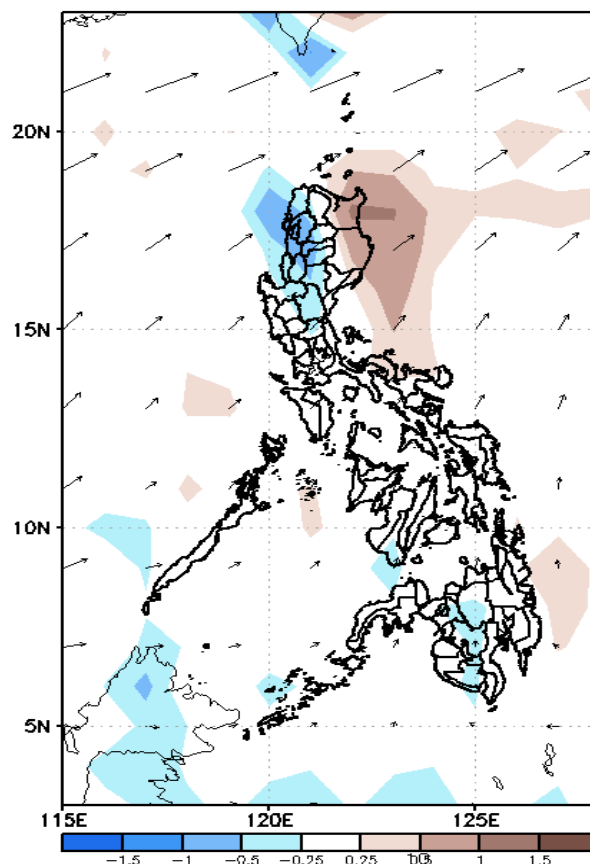
# GEFS Week-2 Forecasts: Wind Anomaly Forecast

Week 2: Dec 12-18, 2022

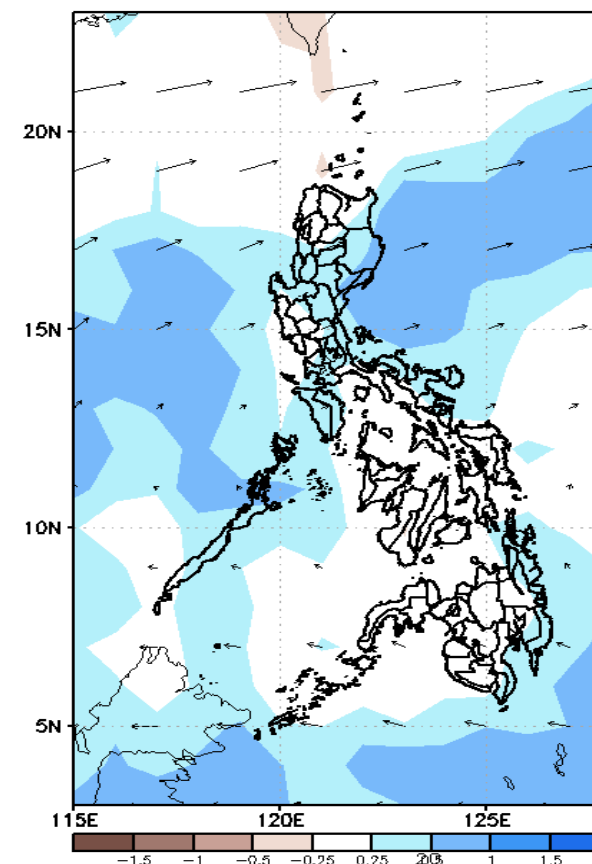
GEFS Week-2 850-hPa Divergence and Wind Anom  
Valid: 20221212 - 20221218



GEFS Week-2 700-hPa Divergence and Wind Anom  
Valid: 20221212 - 20221218



GEFS week-2 200-hPa Divergence and Wind Anom  
Valid: 20221212 - 20221218

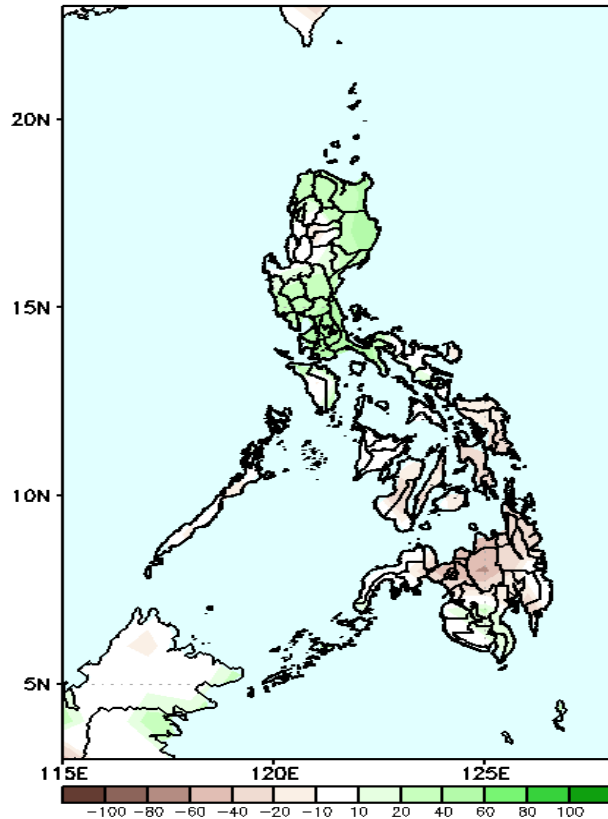


Northeast Monsoon will likely affect Northern and Central Luzon; while Easterlies is forecasted to affect the rest of the country during the forecast period.

# Precipitation Anomaly and Exceedance Probability > 25/50 mm

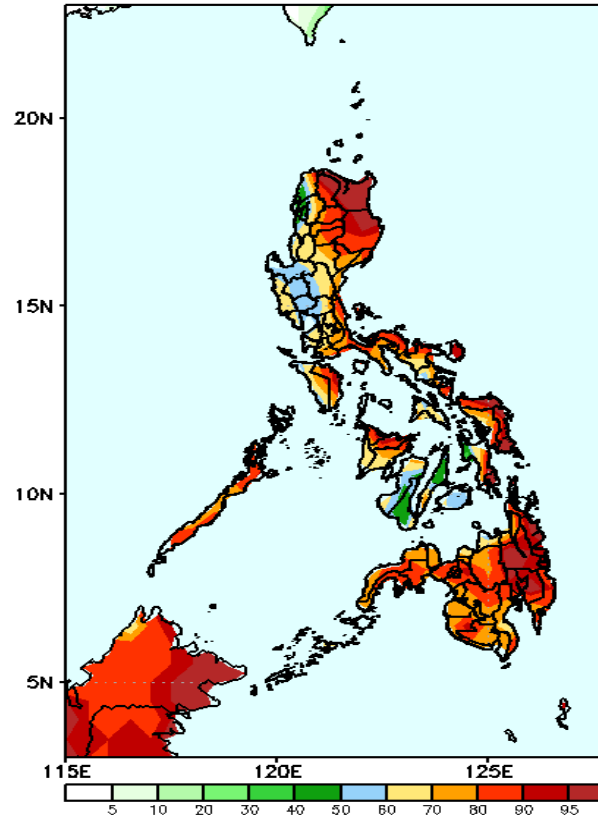
Week 2: Dec 12-18, 2022

GEFS Week-2 Precip Anomaly  
Valid: 20221212 - 20221218



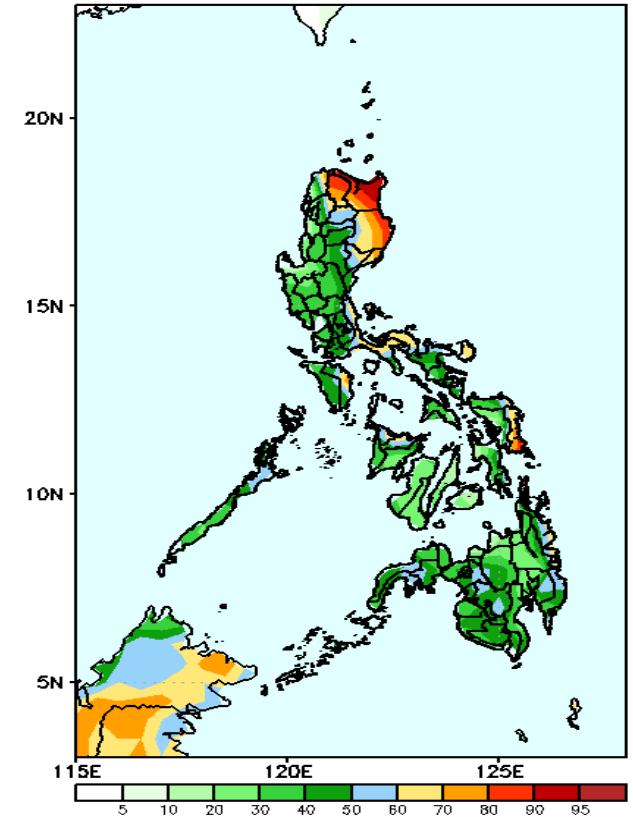
Increase of rainfall of 40-80mm is expected in most parts of Luzon while 20-60mm rainfall deficit in Visayas and northern Mindanao during the forecast period.

GEFS Week-2 Exceedance Prob. > 25mm  
Valid: 20221212 - 20221218



High probability of rainfall to exceed 25mm in most parts of the country during the forecast period.

GEFS Week-2 Exceedance Prob. > 50mm  
Valid: 20221212 - 20221218



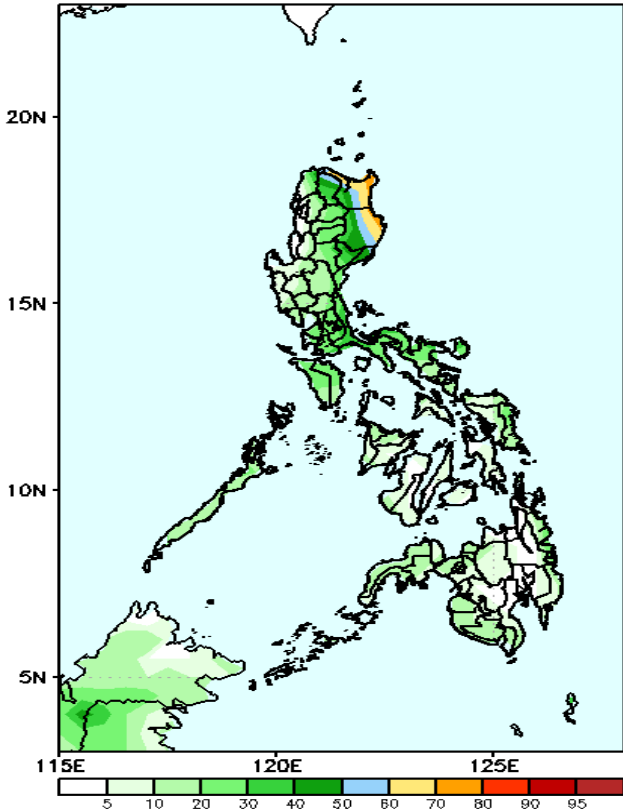
High probability of rainfall to exceed 50mm in Apayao, Cagayan, Isabela and in some parts of Aurora, Quezon, Catanduanes, Or. Mindoro, and Eastern Samar while less likely for the rest of the country during the forecast period.



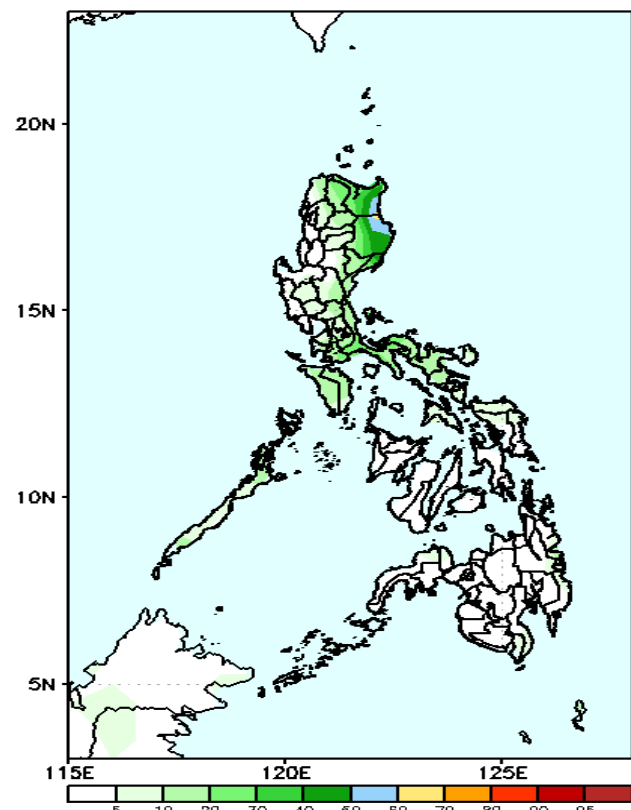
# Exceedance Probability > 100/150/200 mm

Week 2: Dec 12-18, 2022

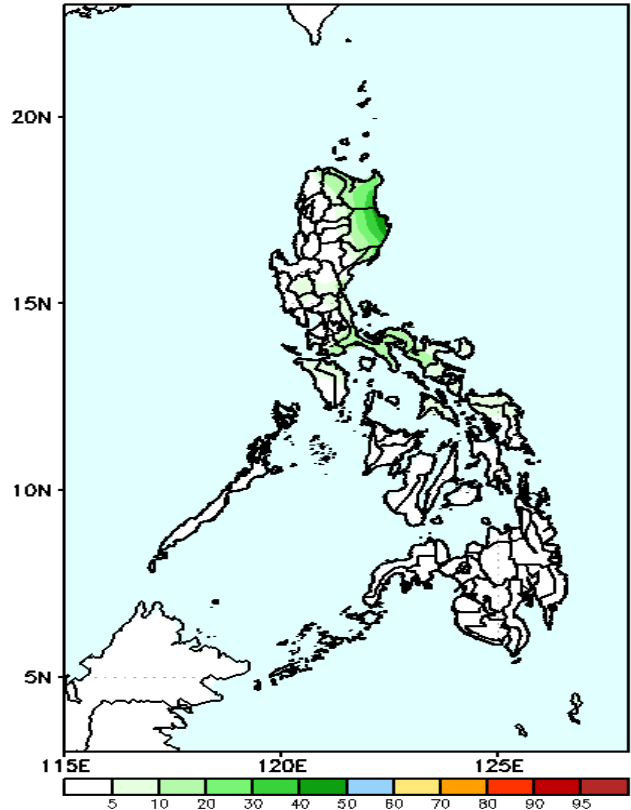
GEFS Week-2 Exceedance Prob. > 100mm  
Valid: 20221212 – 20221218



GEFS Week-2 Exceedance Prob. > 150mm  
Valid: 20221212 – 20221218



GEFS Week-2 Exceedance Prob. > 200mm  
Valid: 20221212 – 20221218

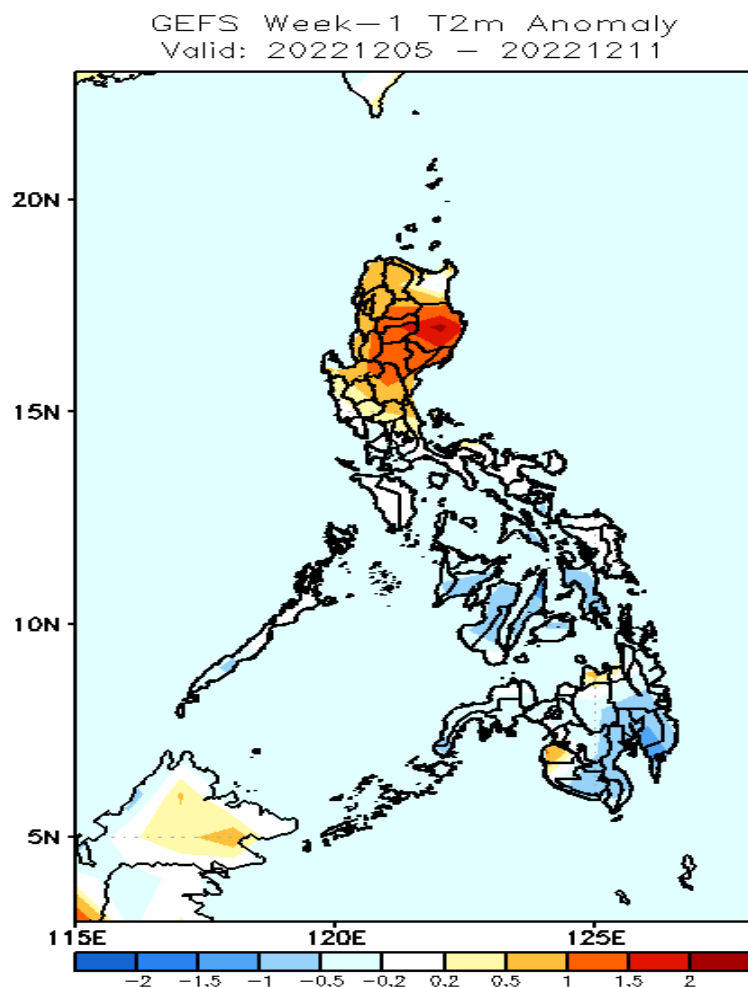


Low probability of rainfall to exceed 100mm in most parts of the country except Cagayan and Isabela during the forecast period.

Low probability of rainfall to exceed 150mm in most parts of the country during the forecast period.

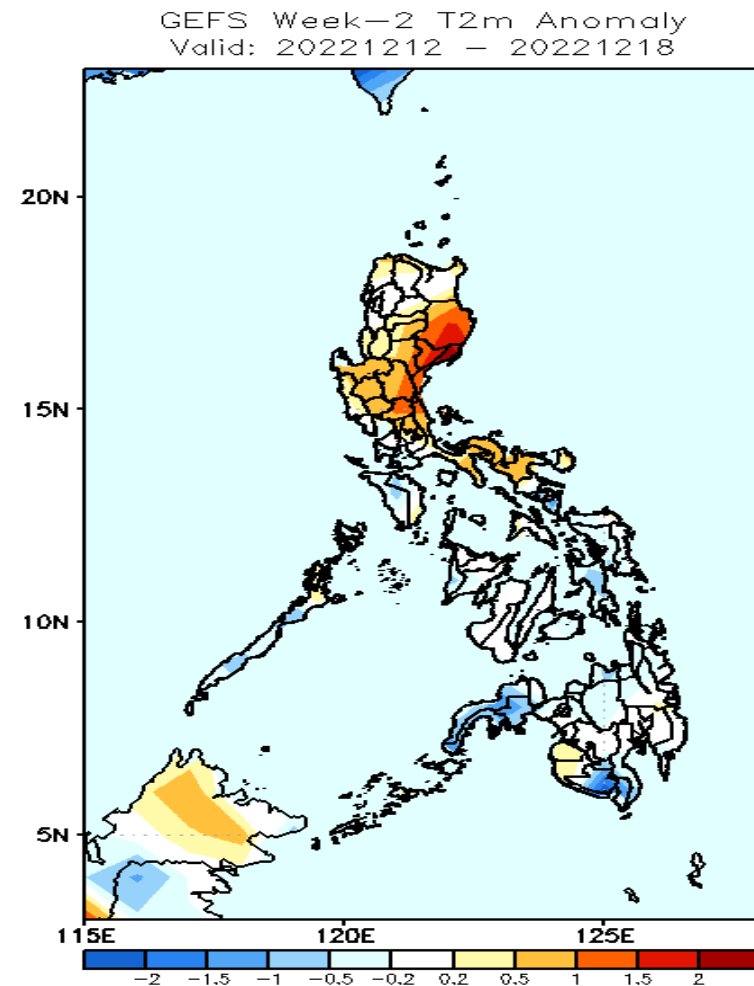
Low probability of rainfall to exceed 150mm in most parts of the country during the forecast period.

# GEFS Week-1 & 2 Forecasts: T2m Anomaly



## 2m Temperature Week 1: Dec 05-11, 2022

Warmer than average surface air temperature will likely experience in most parts Luzon while average to cooler in Southern Luzon, in Visayas and Mindanao during the forecast period.



## 2m Temperature Week 2: Dec 12-18, 2022

Slightly warmer to warmer than average surface air temperature will likely experience in most parts eastern and central Luzon while average to slightly cooler temperatures for the rest of the country during the forecast period.