



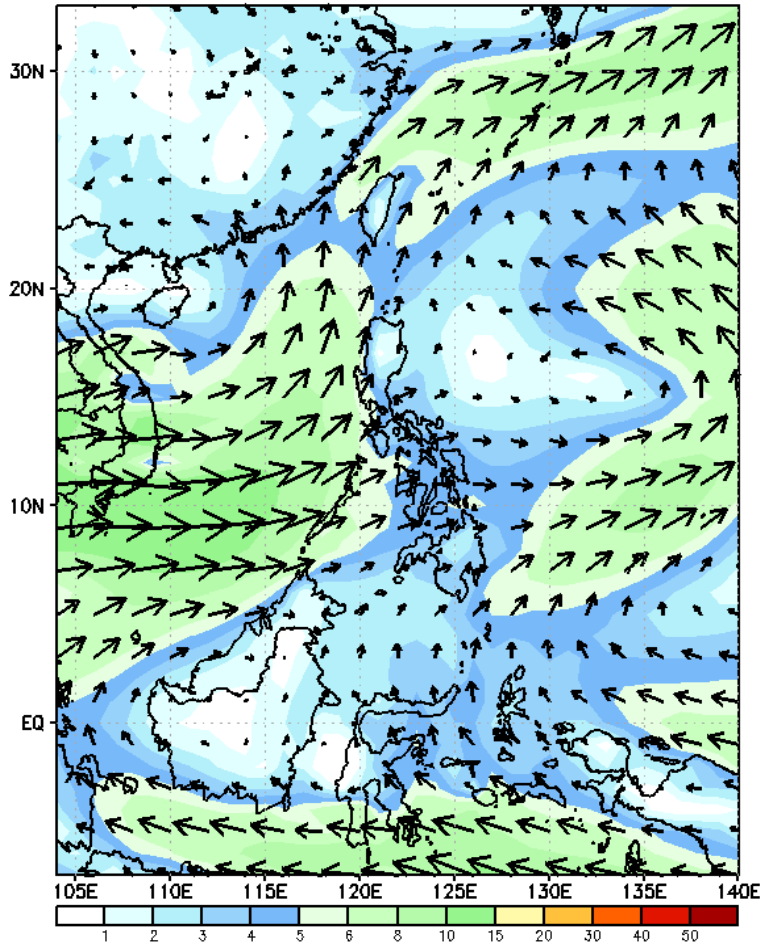
Week 1 & Week 2 Forecast for the Philippines using GEFS Model



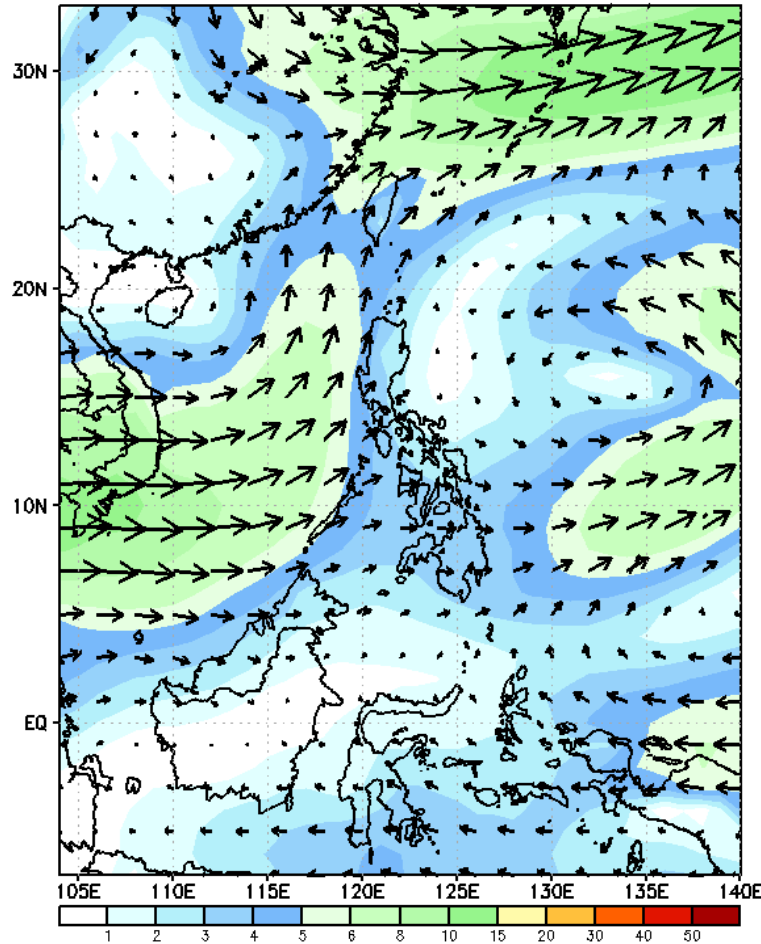
GEFS Week-1 Forecasts: Wind Forecast

Week 1: June 05 - 11, 2023

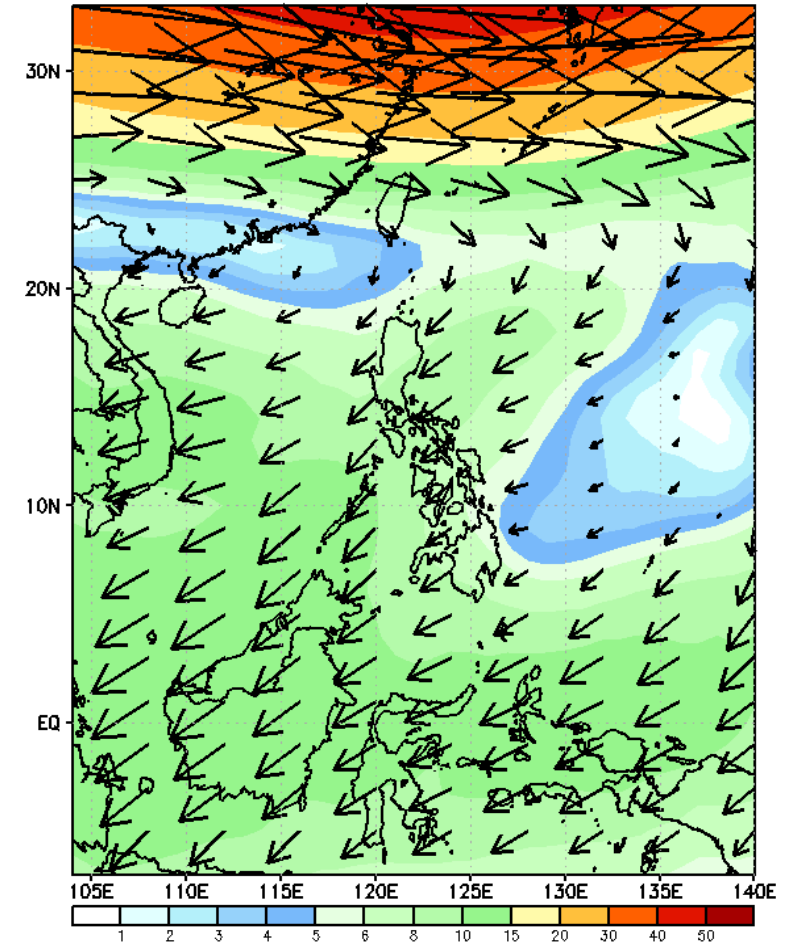
GEFS Week-1 850-hPa Wind Total
Valid: 20230605 - 20230611



GEFS Week-1 700-hPa Wind Total
Valid: 20230605 - 20230611



GEFS Week-1 200-hPa Wind Total
Valid: 20230605 - 20230611

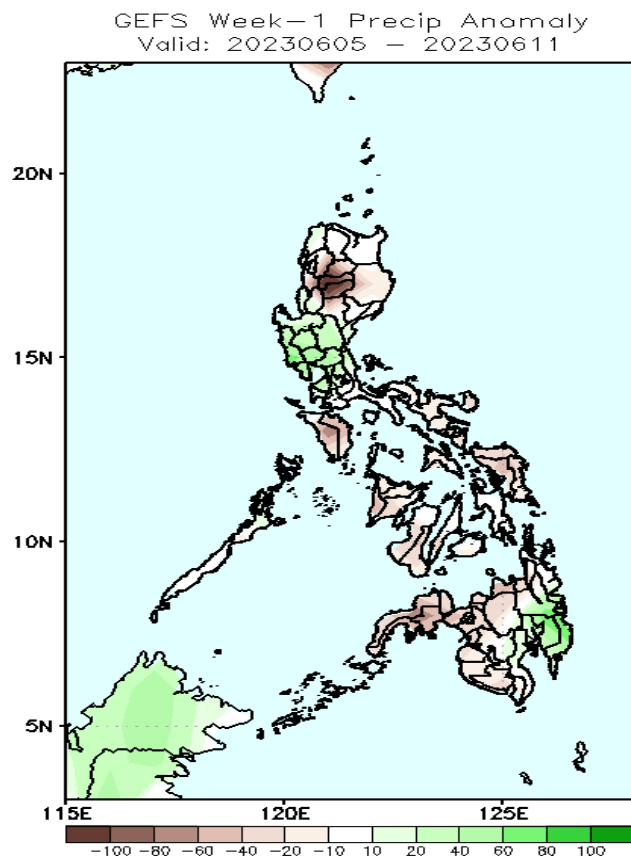


Southwest Monsoon is forecasted to prevail in most parts of the country.

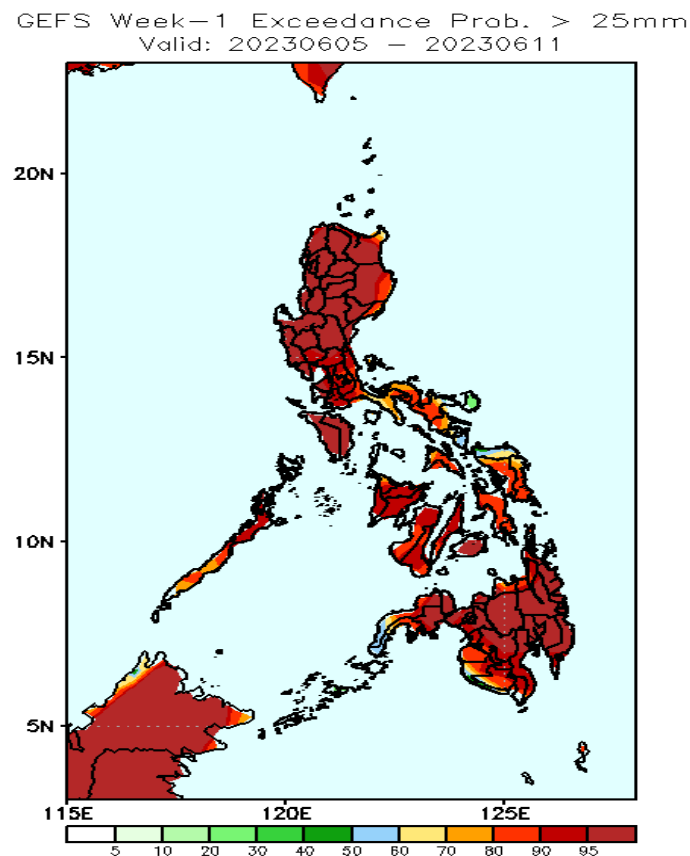
Precipitation Anomaly and Exceedance Probability > 25/50 mm



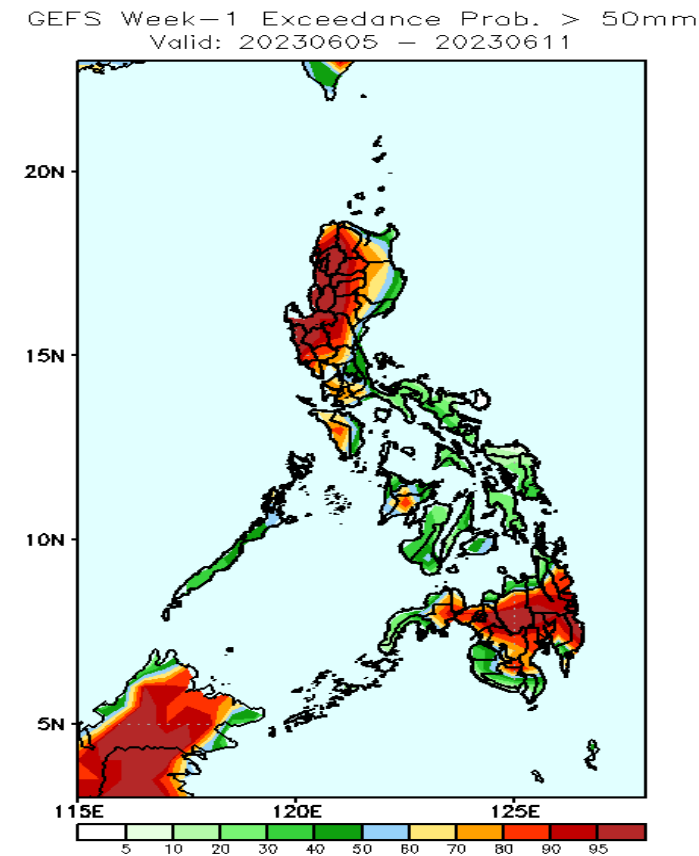
Week 1: June 05 - 11, 2023



Rainfall deficit of up to 100mm is expected in most parts of Kalinga, Mt. Province, Ifugao; 40-80mm in southern Luzon, most parts of Visayas and Mindanao while up to 40-90mm increase of rainfall in Central Luzon and Davao Region.



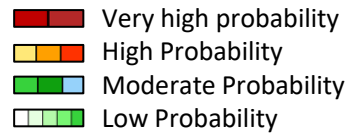
High to a very high probability to exceed 25mm of rainfall across the country.



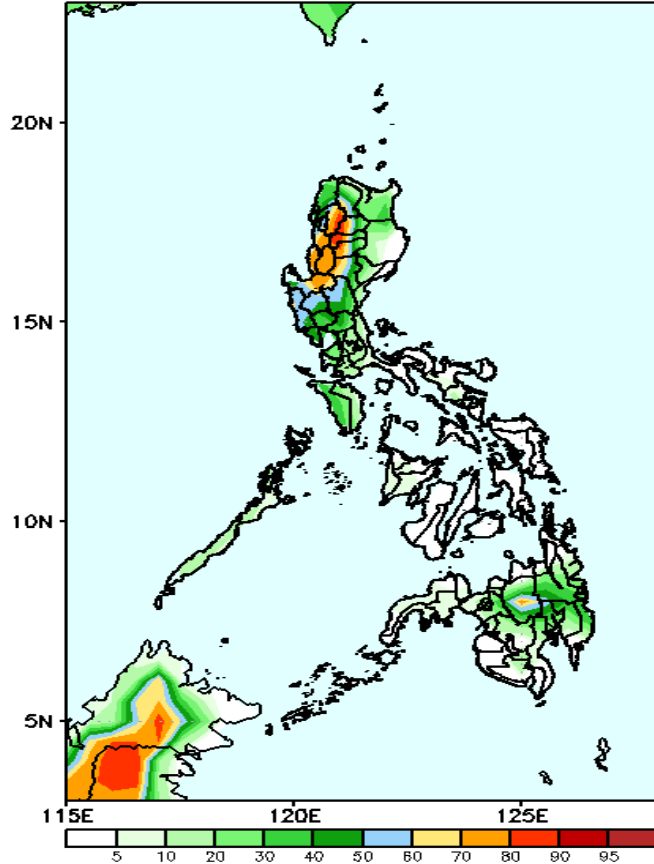
High to very probability to exceed 50mm of rainfall in the Ilocos region, CAR, Central Luzon, and most parts of Mindanao; moderate to high likelihood over the Cagayan Valley, MIMAROPA, Panay island, and Bohol while low likelihood over the rest of the country.

Exceedance Probability > 100/150/200 mm

Week 1: June 05 - 11, 2023

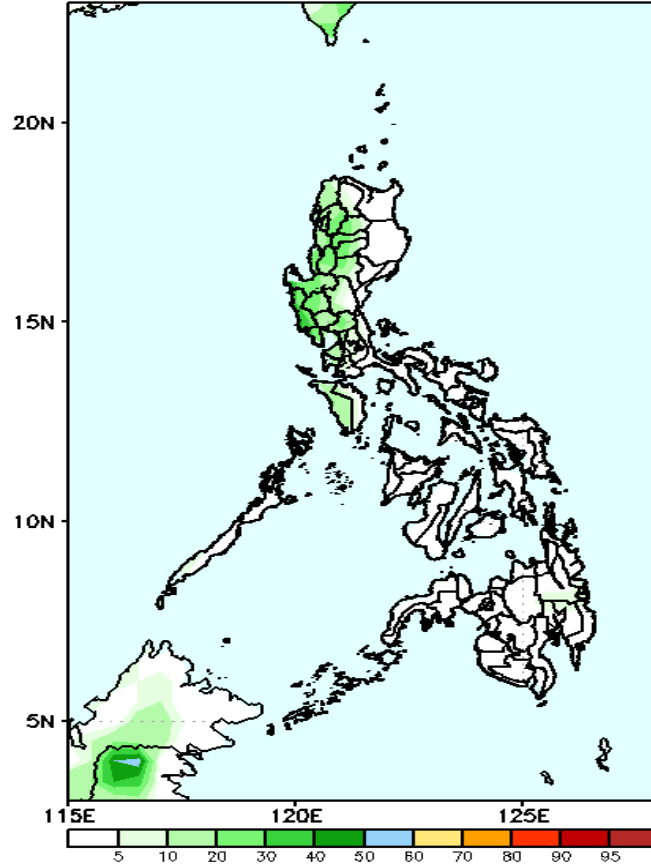


GEFS Week-1 Exceedance Prob. > 100mm
Valid: 20230605 - 20230611



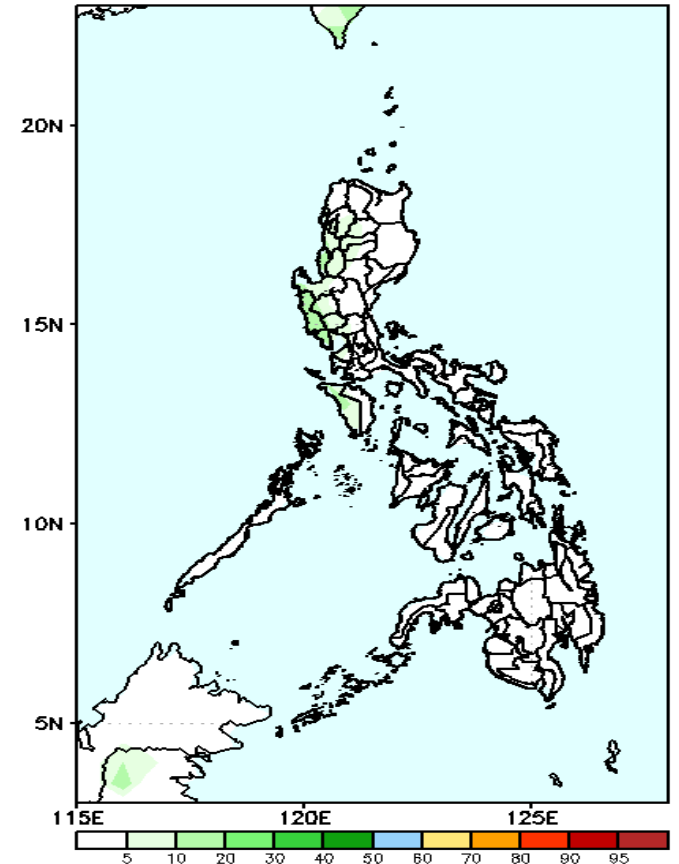
Moderate to high probability to exceed 100mm of rainfall over the western sections of Luzon and Bukidnon while low likelihood over the rest of the country.

GEFS Week-1 Exceedance Prob. > 150mm
Valid: 20230605 - 20230611



Low probability to exceed 150mm of rainfall over the rest of the country.

GEFS Week-1 Exceedance Prob. > 200mm
Valid: 20230605 - 20230611

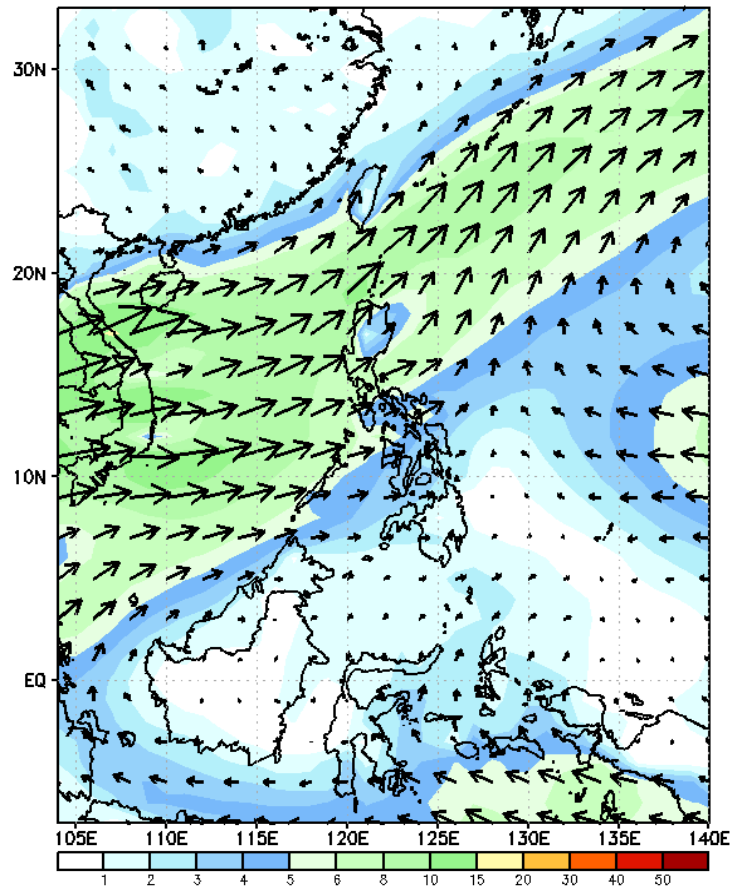


Low probability to exceed 200mm of rainfall over the rest of the country.

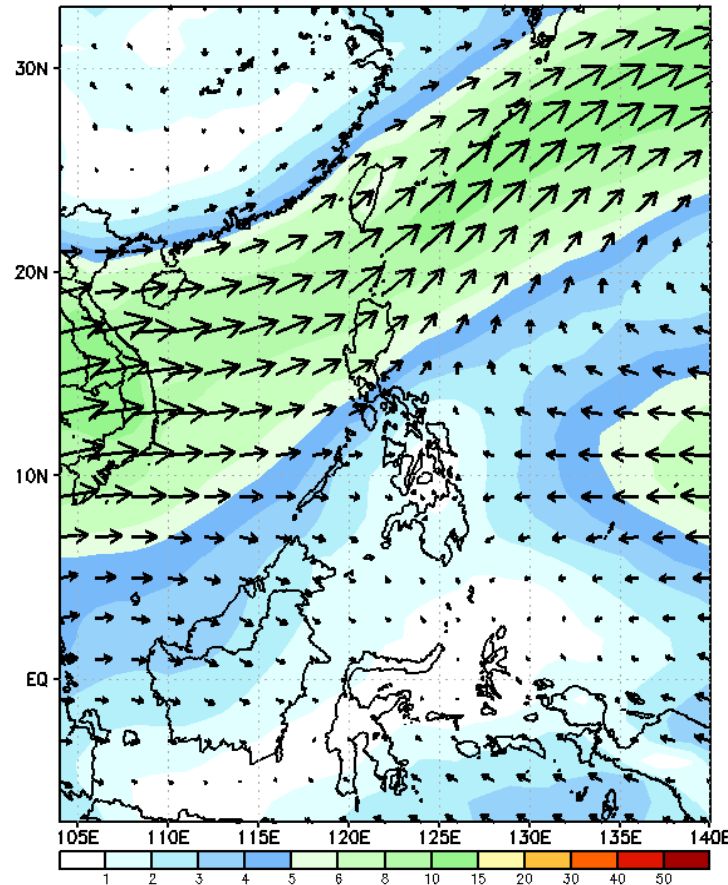
GEFS Week-2 Forecasts: Wind Forecast

Week 2: June 12-18, 2023

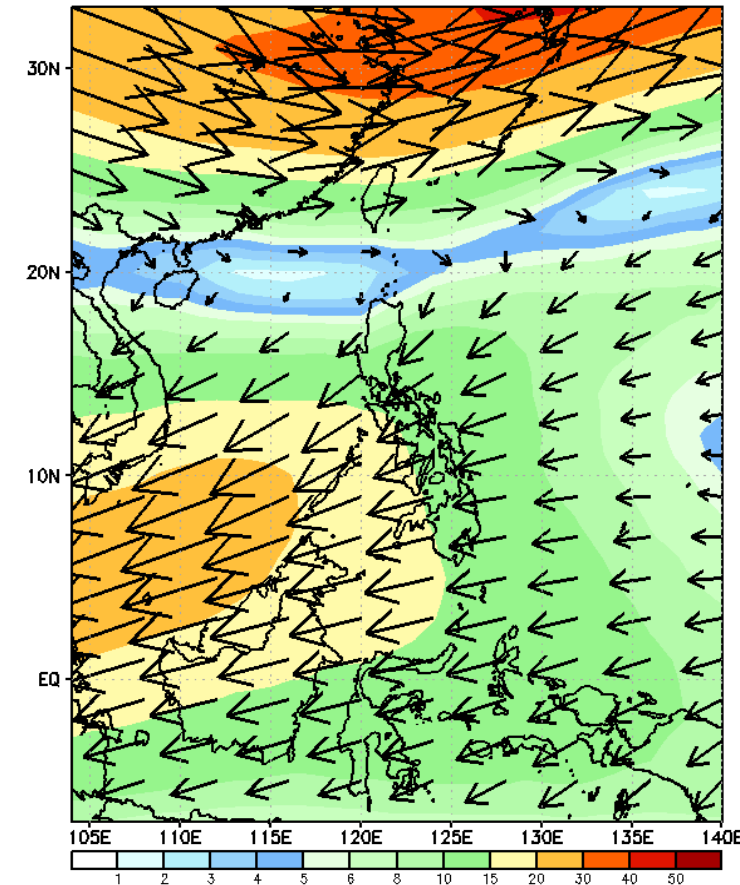
GEFS Week-2 850-hPa Wind Total
Valid: 20230612 - 20230618



GEFS Week-2 700-hPa Wind Total
Valid: 20230612 - 20230618

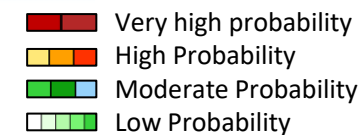


GEFS Week-2 200-hPa Wind Total
Valid: 20230612 - 20230618



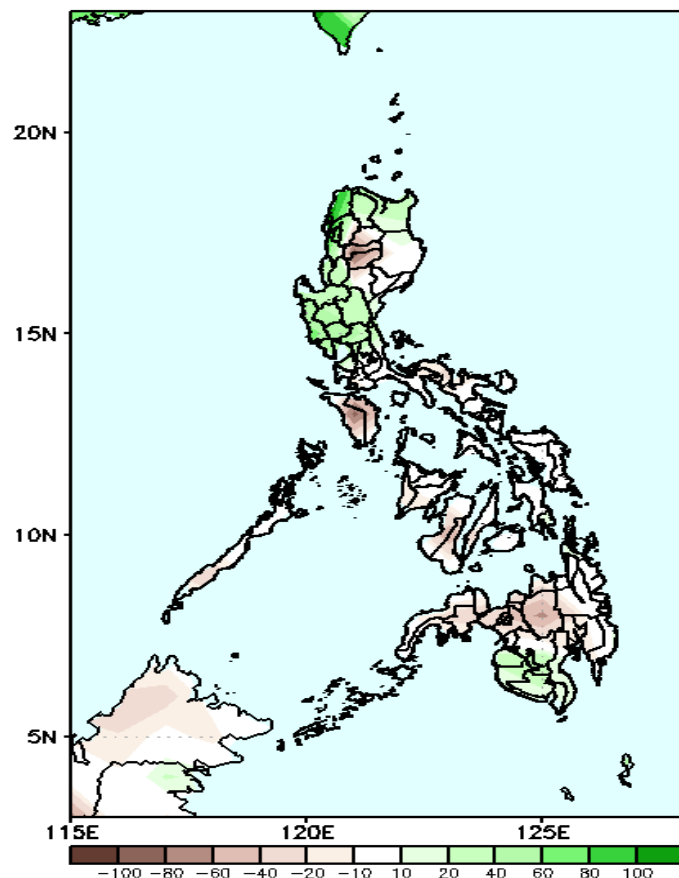
Southwest monsoon is forecasted to prevail in Luzon and western sections of Visayas and Mindanao while easterlies will likely affect the rest of Visayas and Mindanao.

Precipitation Anomaly and Exceedance Probability > 25/50 mm



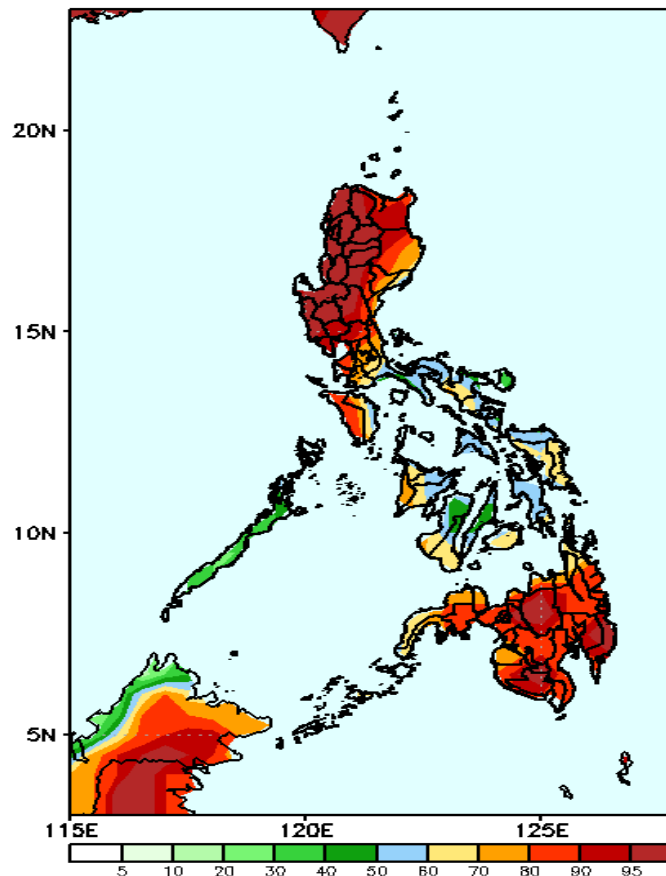
Week 2: June 12-18, 2023

GEFS Week-2 Precip Anomaly
Valid: 20230612 - 20230618



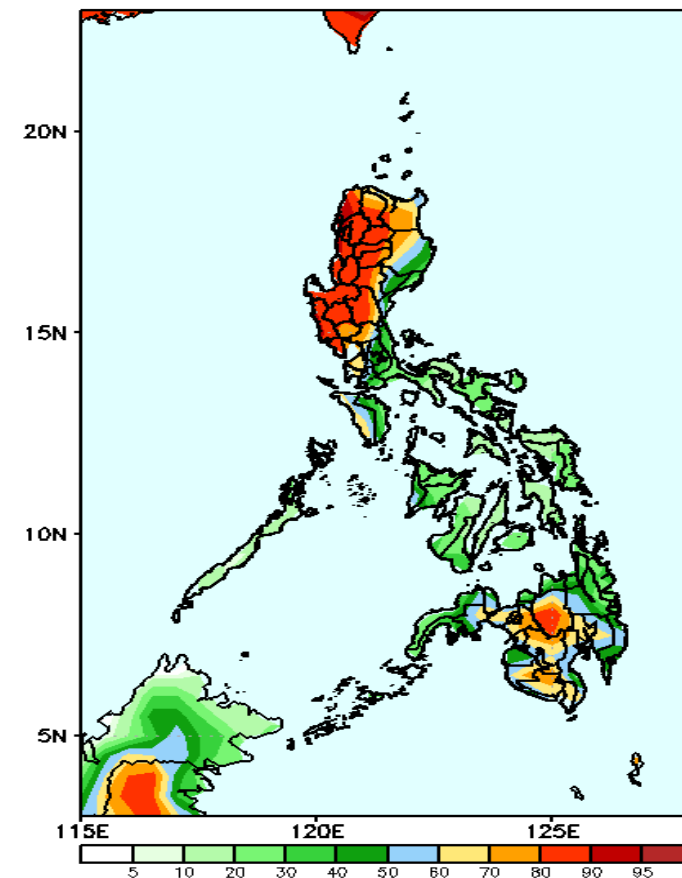
Rainfall deficit of 40-80mm is expected in most parts of the country except in Ilocos Region, Apayao, Cagayan, Central Luzon and southwestern Mindanao.

GEFS Week-2 Exceedance Prob. > 25mm
Valid: 20230612 - 20230618



High to a very high probability to exceed 25mm of rainfall Northern and Central Luzon and Mindanao, while moderate to high likelihood over Visayas and the rest of Luzon .

GEFS Week-2 Exceedance Prob. > 50mm
Valid: 20230612 - 20230618



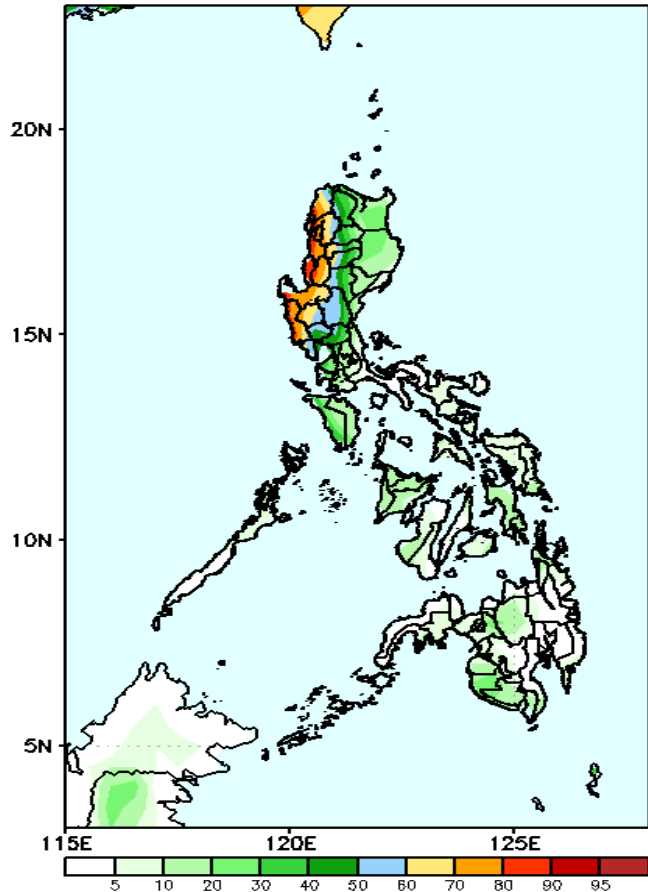
High to a very high probability to exceed 50mm of rainfall in the Ilocos Region, CAR and Central Luzon; moderate to high in Cagayan Valley and Mindanao while low to moderate likelihood over the rest of the country.

Exceedance Probability > 100/150/200 mm

Week 2: June 12-18, 2023

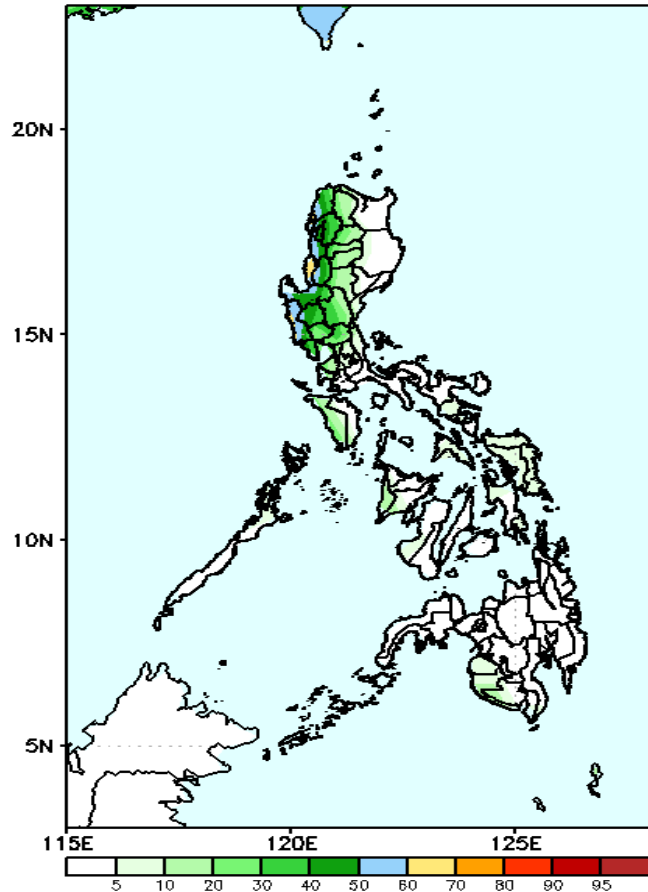
- Very high probability
- High Probability
- Moderate Probability
- Low Probability

GEFS Week-2 Exceedance Prob. > 100mm
Valid: 20230612 – 20230618



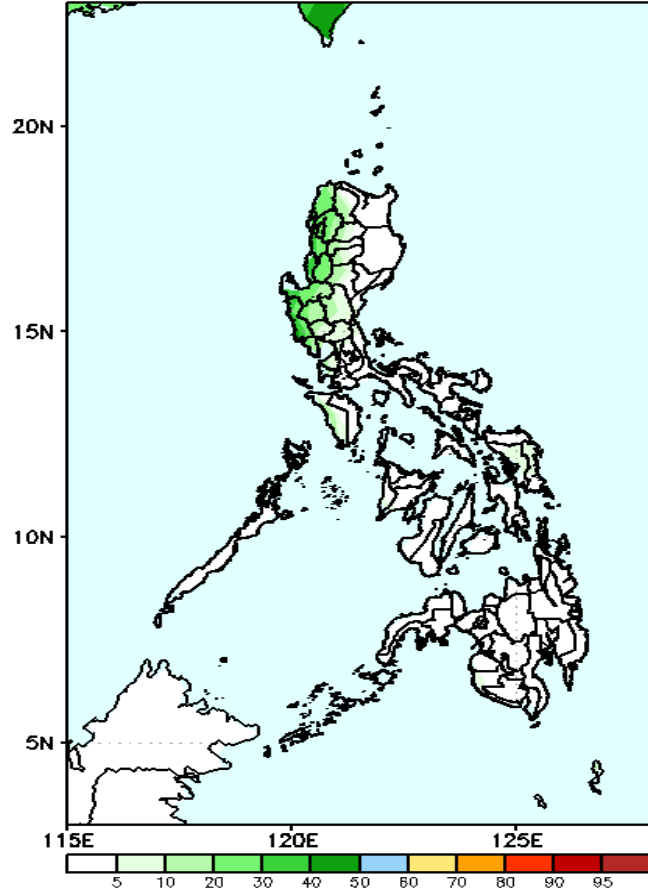
Moderate to high probability to exceed 100mm of rainfall over the western sections of Luzon while low likelihood over the rest of the country.

GEFS Week-2 Exceedance Prob. > 150mm
Valid: 20230612 – 20230618



Moderate probability to exceed 100mm of rainfall over the western sections of Luzon while low likelihood over the rest of the country.

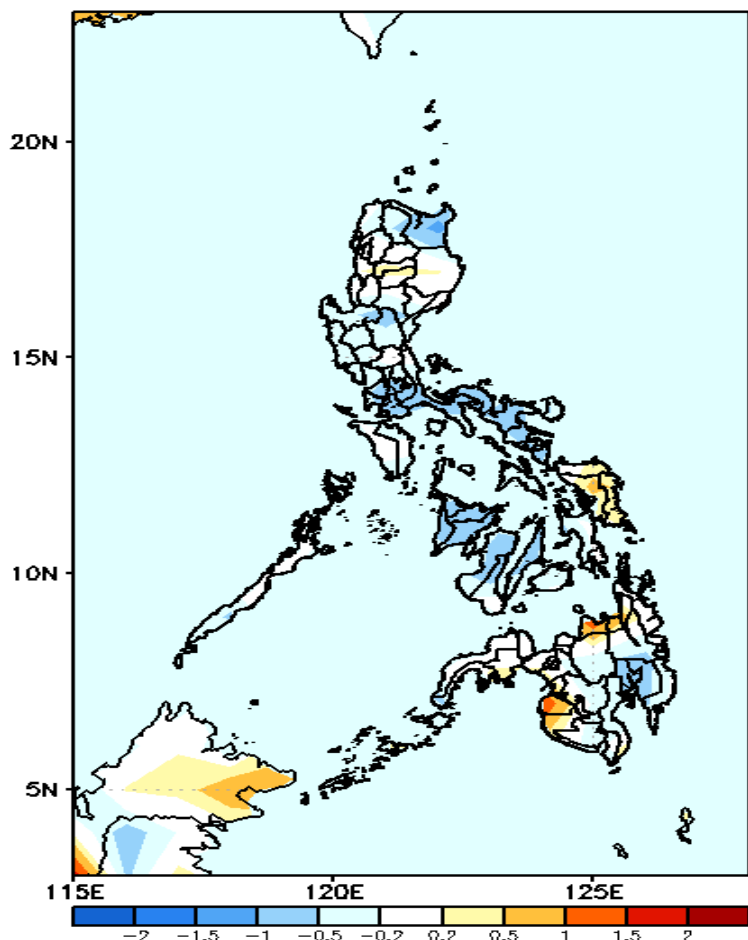
GEFS Week-2 Exceedance Prob. > 200mm
Valid: 20230612 – 20230618



Low probability to exceed 200mm of rainfall over the rest of the country.

GEFS Week-1 & 2 Forecasts: T2m Anomaly

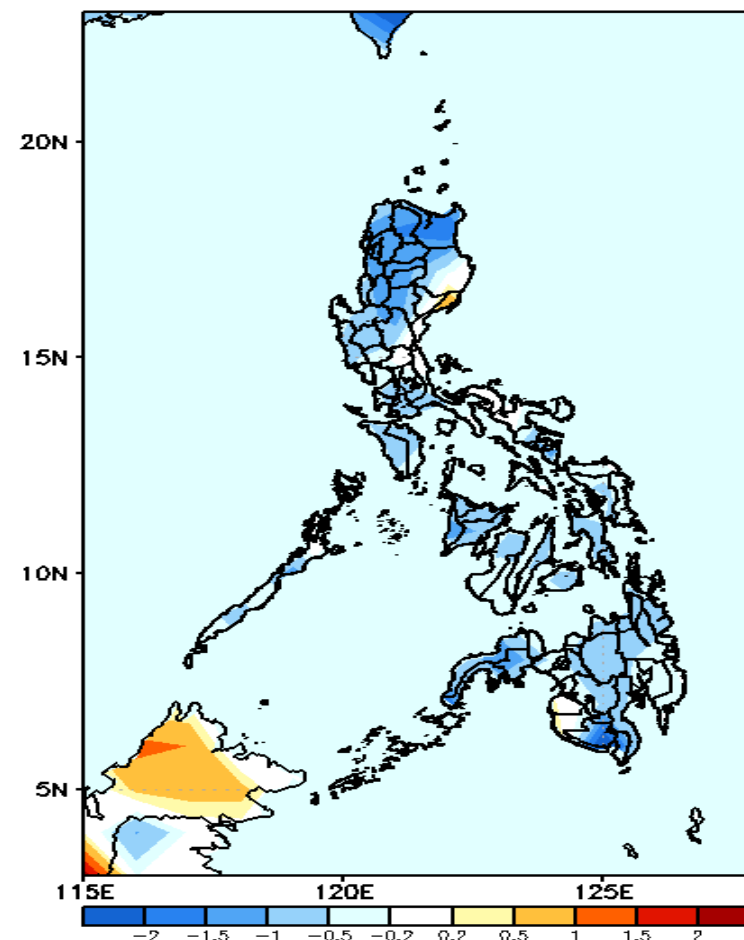
GEFS Week-1 T2m Anomaly
Valid: 20230605 - 20230611



2m Temperature Week 1: June 05 - 11, 2023

Average to slightly cooler than surface air temperature will likely experience in most parts of the country except Samar provinces, Misamis Oriental, Maguindanao and Sultan Kudarat where slightly warmer to warmer than average temperature is forecasted.

GEFS Week-2 T2m Anomaly
Valid: 20230612 - 20230618



2m Temperature Week 2: June 12-18, 2023

Average to cooler than average surface air temperature will likely experience in most parts of the country except Baler where slightly warmer than average temperature is forecasted.