



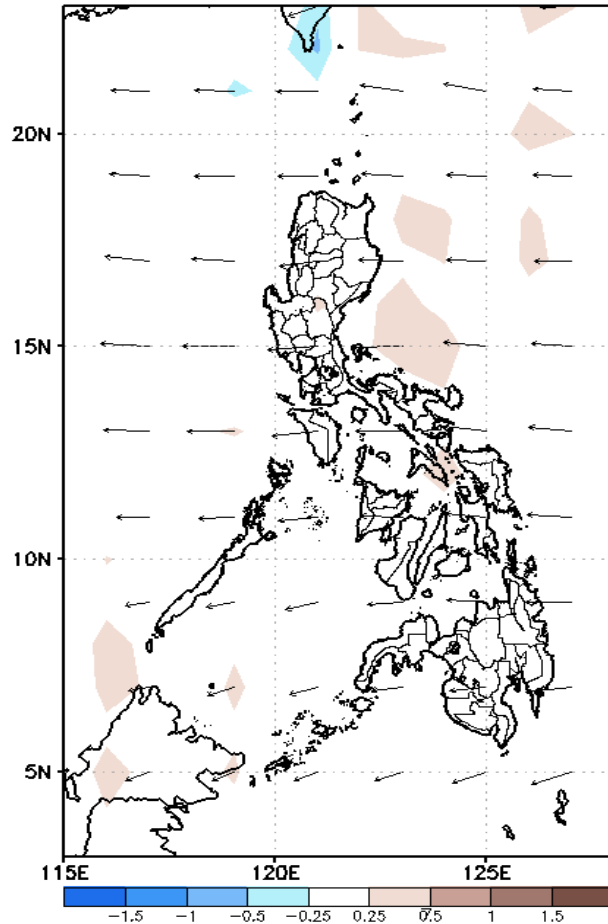
Week 1 & Week 2 Forecast for the Philippines using GEFS Model



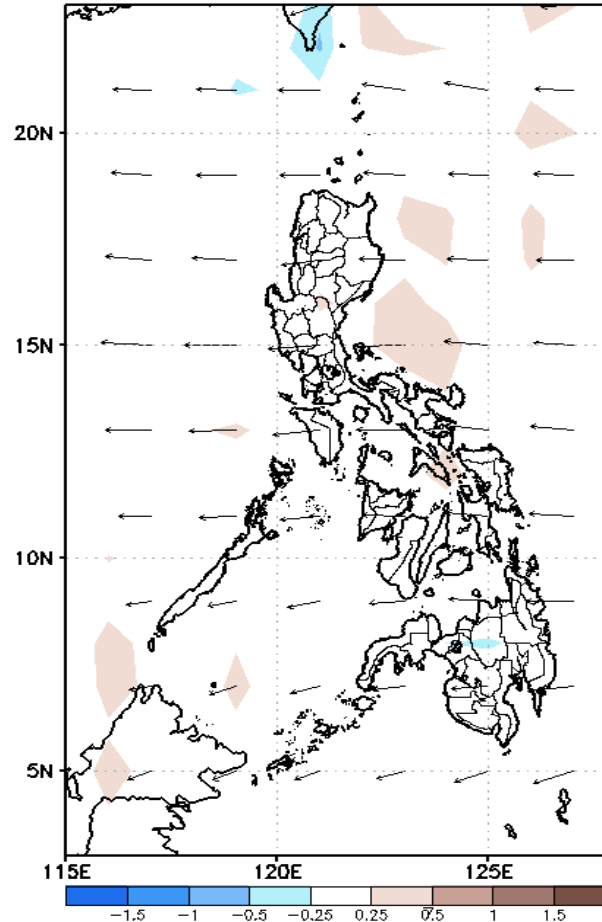
GEFS Week-1 Forecasts: Divergence & Wind Anomaly

Week 1: July 05-11, 2021

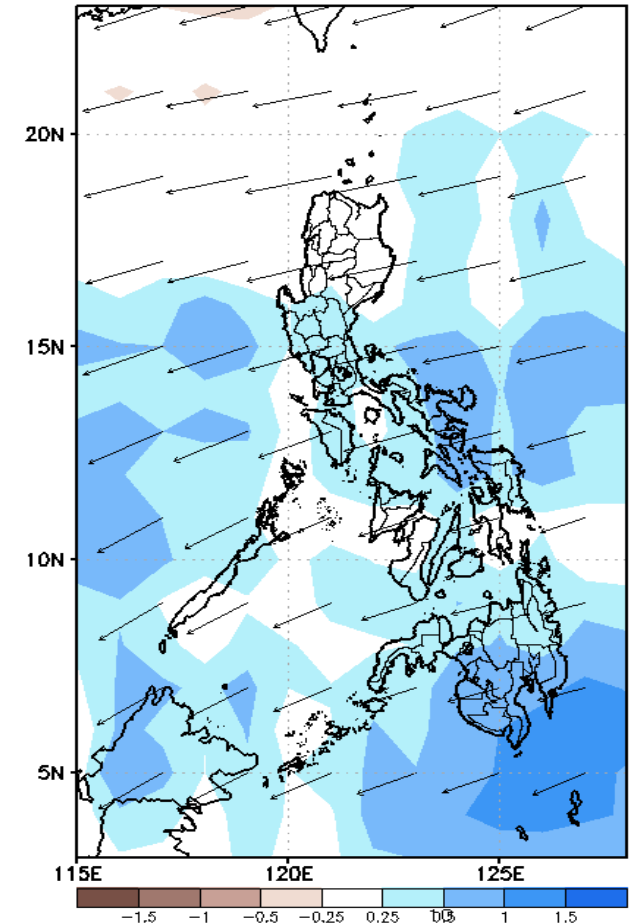
GEFS Week-1 850-hPa Divergence and Wind Anom
Valid: 20210705 - 20210711



GEFS Week-1 700-hPa Divergence and Wind Anom
Valid: 20210705 - 20210711



GEFS Week-1 200-hPa Divergence and Wind Anom
Valid: 20210705 - 20210711

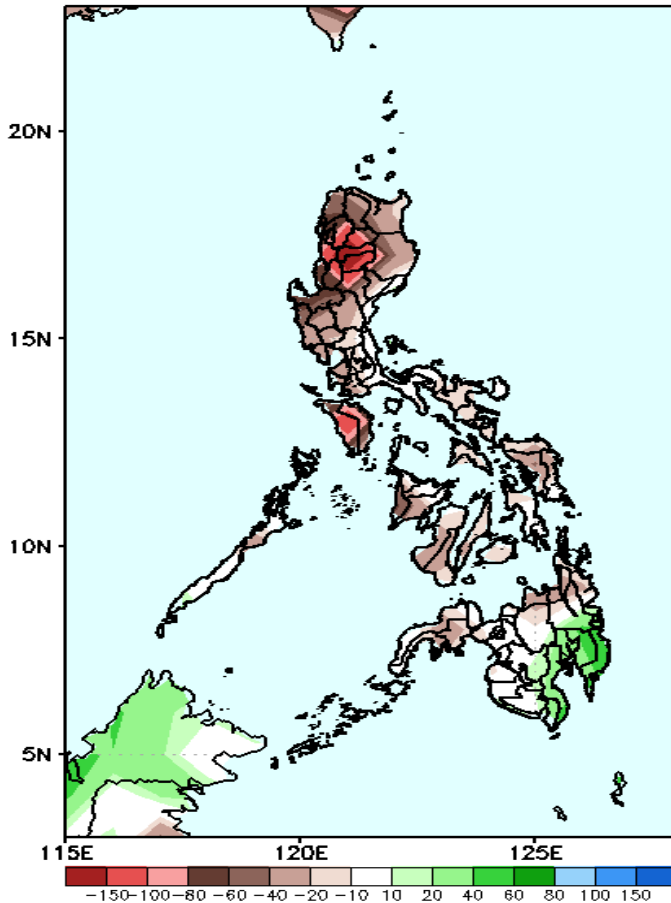


Upper and low level Divergence suggest likelihood of precipitation in most parts of the country except Northern Luzon. Southwest monsoon affecting parts of Western Luzon while Easterlies affecting the rest of the country. Attributing to warmer temperature and higher heat index; with humid environment(especially in the western section of the country) during the forecast period.

Precipitation Anomaly and Exceedance Probability > 25/50 mm

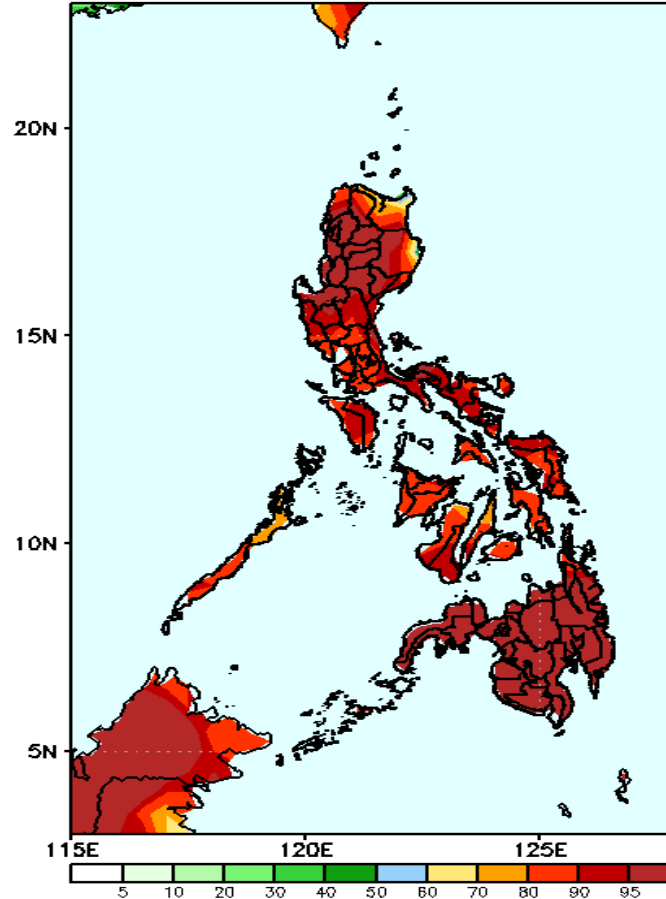
Week 1: July 05-11, 2021

GEFS Week-1 Precip Anomaly
Valid: 20210705 - 20210711



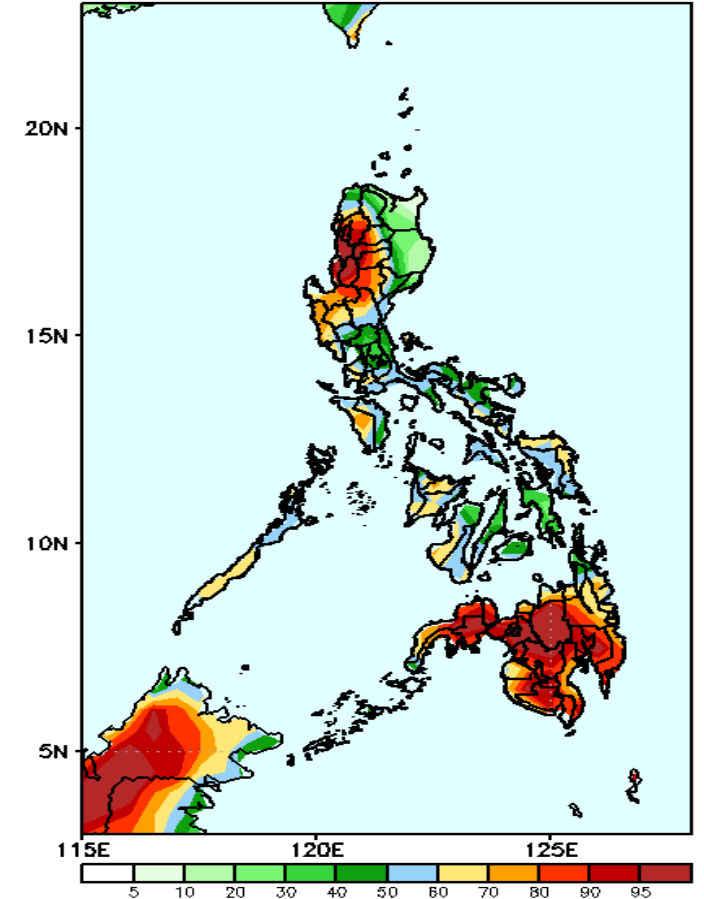
Rainfall deficit of up to 150mm is expected in Cordillera Region and Mindoro and 40-80mm for the rest of the country except for Davao Region, North & South Cotabato with 40-80mm increase of rainfall during the forecast period.

GEFS Week-1 Exceedance Prob. > 25mm
Valid: 20210705 - 20210711



High probability of rainfall to exceed 25mm in Northern and Central Luzon and in most parts of Visayas and Mindanao while less likely for the rest of the country during the forecast period.

GEFS Week-1 Exceedance Prob. > 50mm
Valid: 20210705 - 20210711

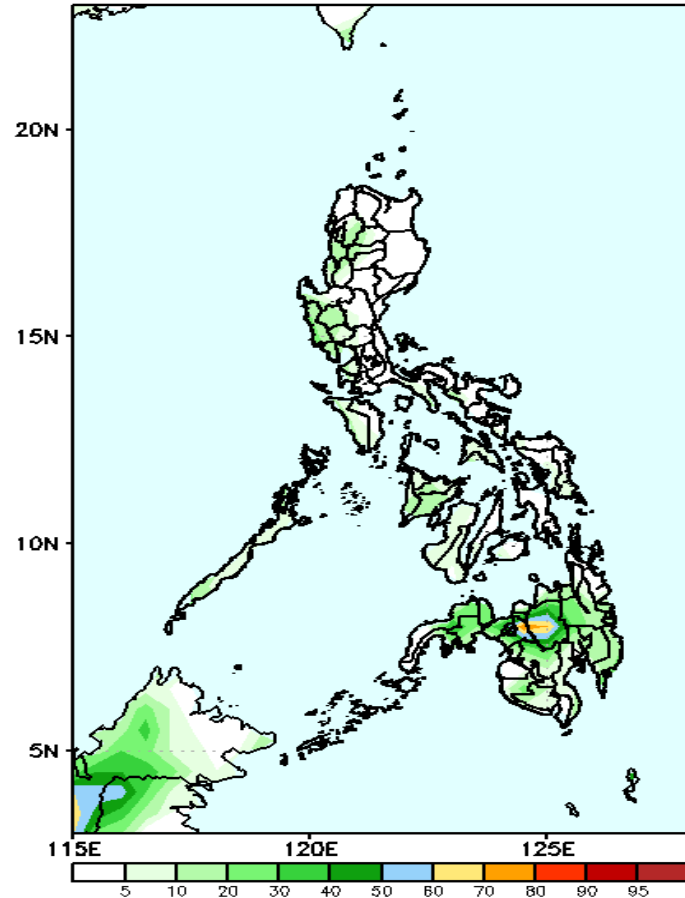


High probability of rainfall to exceed 50mm in most parts of Western Luzon, most parts of CAR, some parts of Visayas and most parts of Mindanao while less likely for the remaining parts of the country during the forecast period.

Exceedance Probability > 100/150/200 mm

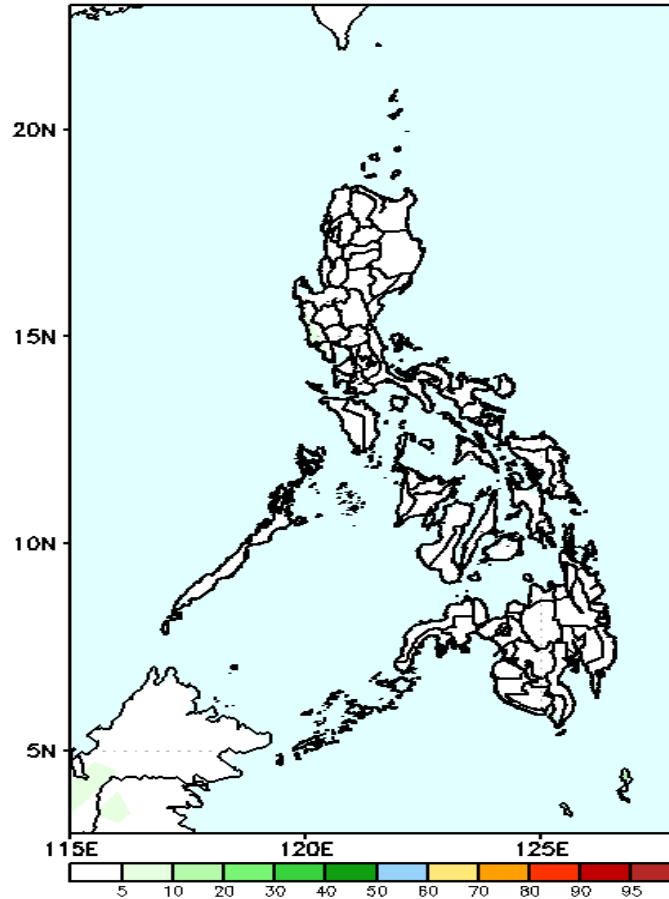
Week 1: July 05-11, 2021

GEFS Week-1 Exceedance Prob. > 100mm
Valid: 20210705 – 20210711



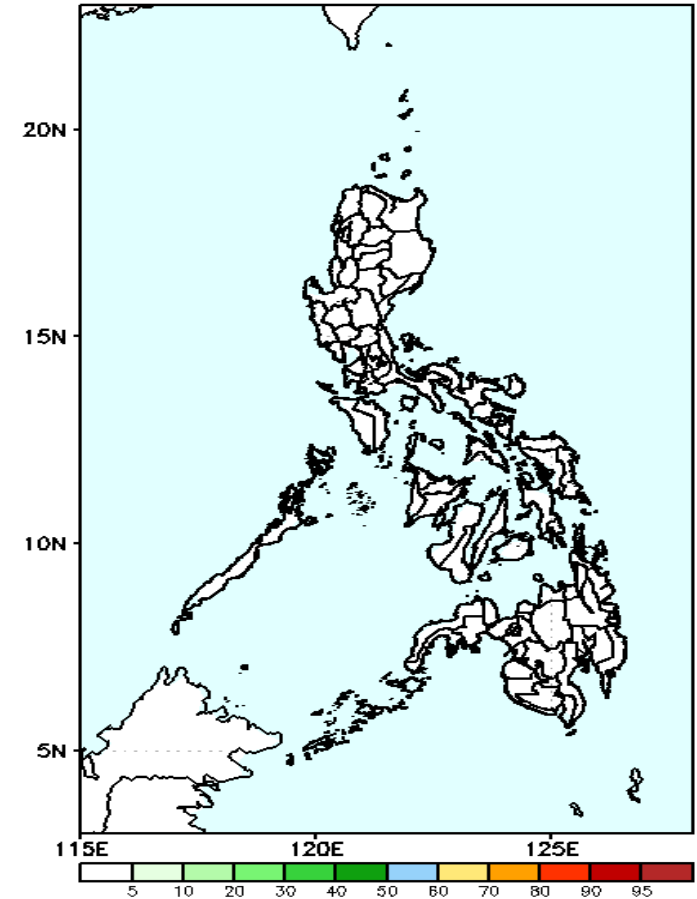
Less probability of rainfall to exceed 100mm in most parts of the country during the forecast period.

GEFS Week-1 Exceedance Prob. > 150mm
Valid: 20210705 – 20210711



Less probability of rainfall to exceed 150mm in most parts of the country during the forecast period.

GEFS Week-1 Exceedance Prob. > 200mm
Valid: 20210705 – 20210711



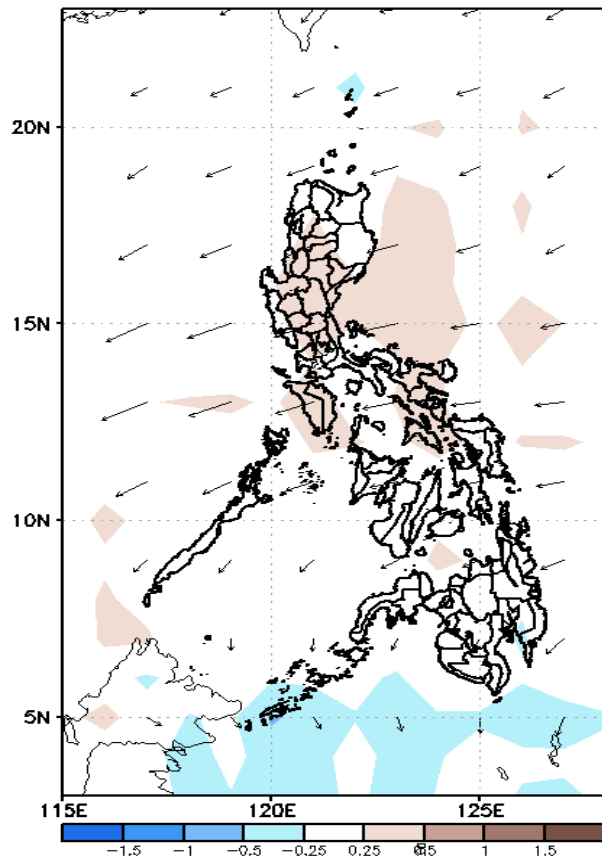
Less probability of rainfall to exceed 200mm in most parts of the country during the forecast period.



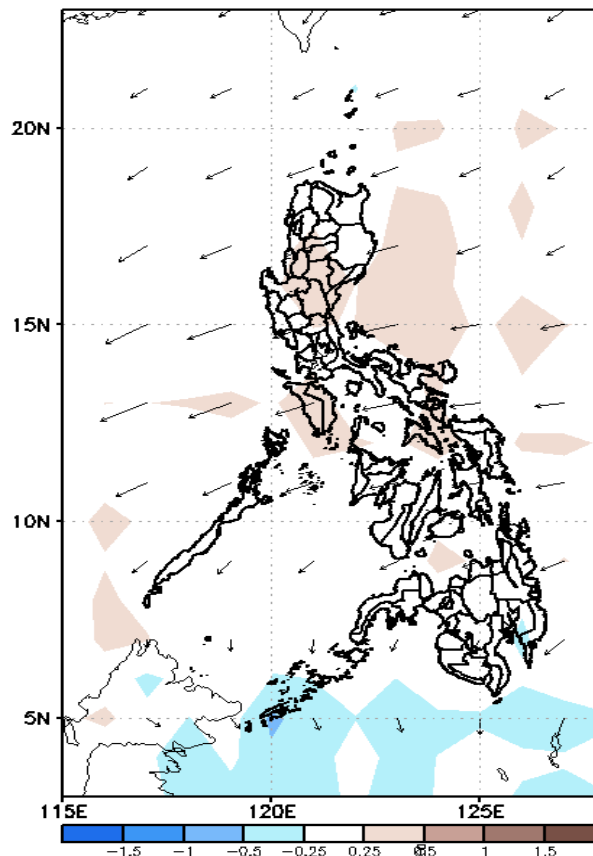
GEFS Week-2 Forecasts: Divergence & Wind Anomaly

Week 2: July 12-18, 2021

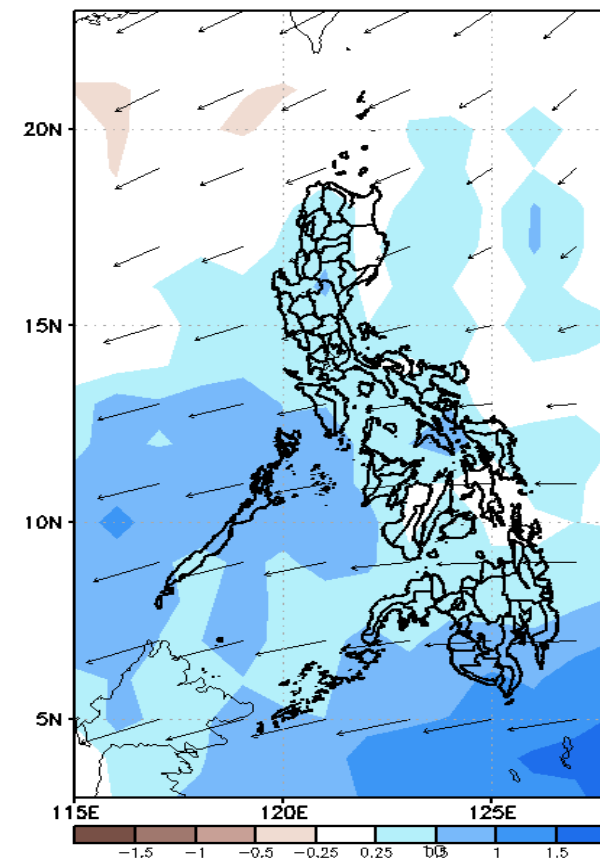
GEFS Week-2 850-hPa Divergence and Wind Anomaly
Valid: 20210712 - 20210718



GEFS Week-2 700-hPa Divergence and Wind Anomaly
Valid: 20210712 - 20210718



GEFS week-2 200-hPa Divergence and Wind Anomaly
Valid: 20210712 - 20210718

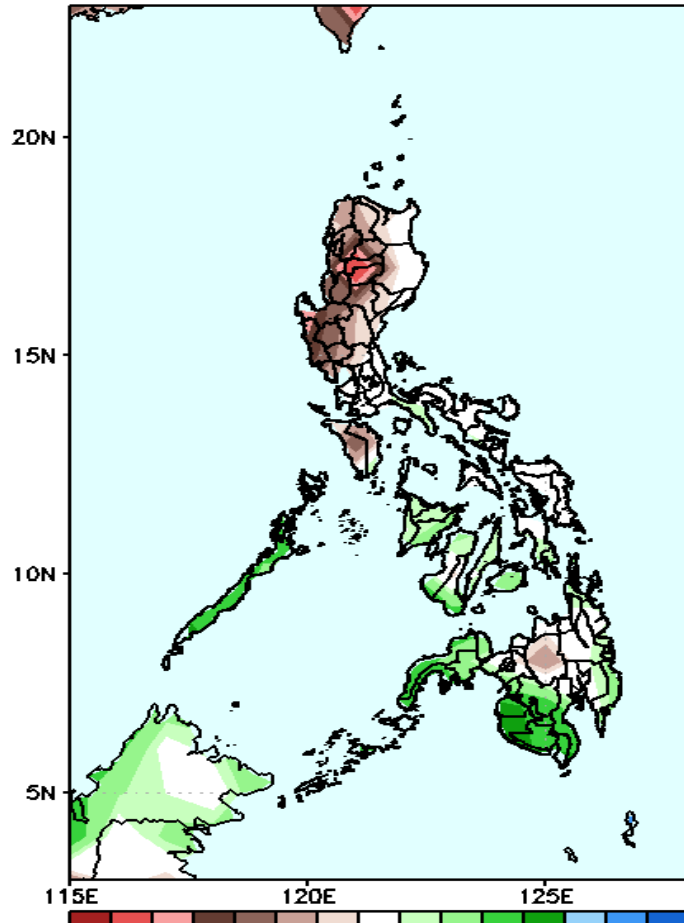


Upper and low level Divergence suggest likelihood of precipitation in most parts of the country. Easterlies affecting most parts of the country. Attributing to warmer temperature and higher heat index during the forecast period.

Precipitation Anomaly and Exceedance Probability > 25/50 mm

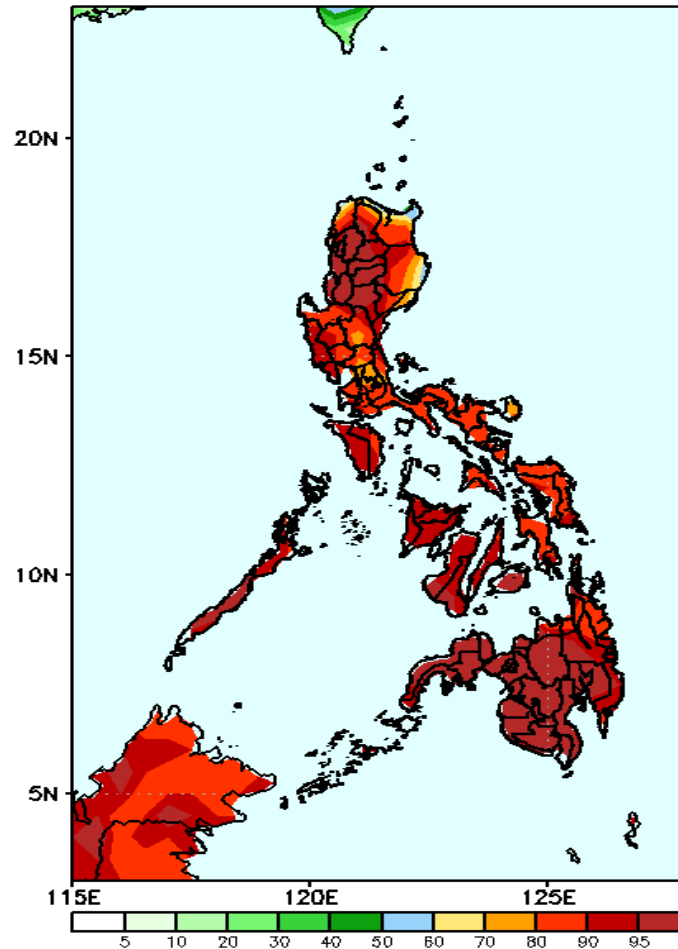
Week 2: July 12-18, 2021

GEFS Week-2 Precip Anomaly
Valid: 20210712 - 20210718



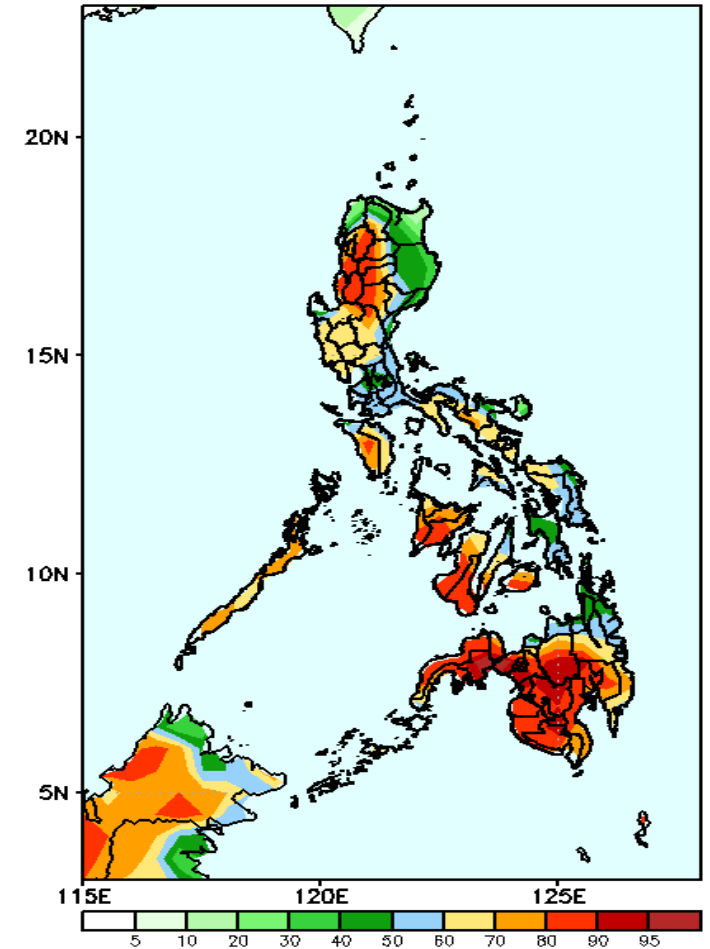
Rainfall deficit of 40-100mm is expected in western section of Luzon while 40-80mm increase of rainfall in western sections of Visayas and Mindanao during the forecast period.

GEFS Week-2 Exceedance Prob. > 25mm
Valid: 20210712 - 20210718



High probability of rainfall to exceed 25mm in most parts of the country during the forecast period.

GEFS Week-2 Exceedance Prob. > 50mm
Valid: 20210712 - 20210718

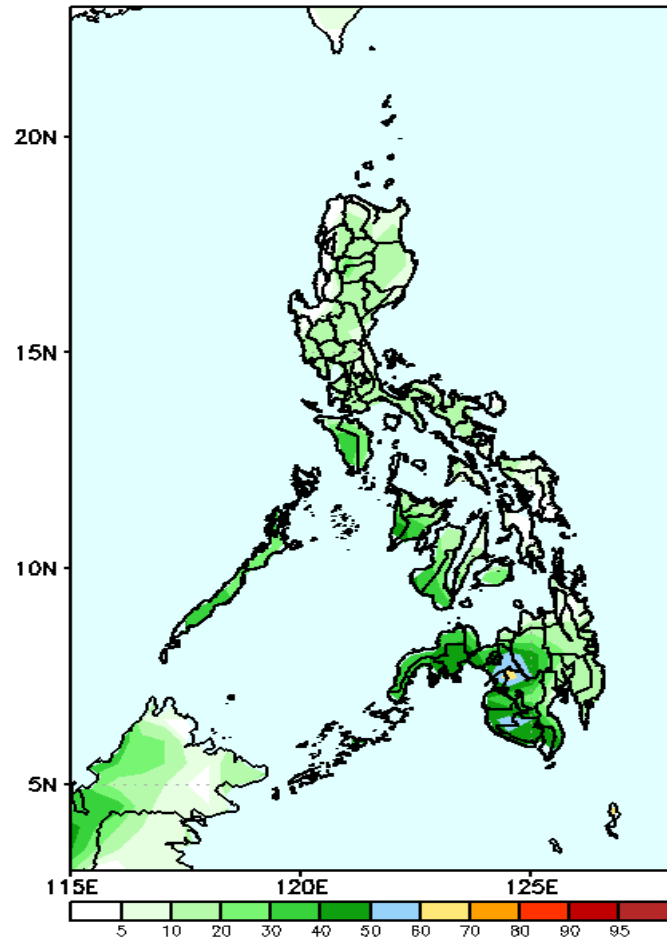


High probability of rainfall to exceed 50mm in most parts of the country except Ilocos Norte, Isabela, Cagayan and CARAGA Region during the forecast period.

Exceedance Probability > 100/150/200 mm

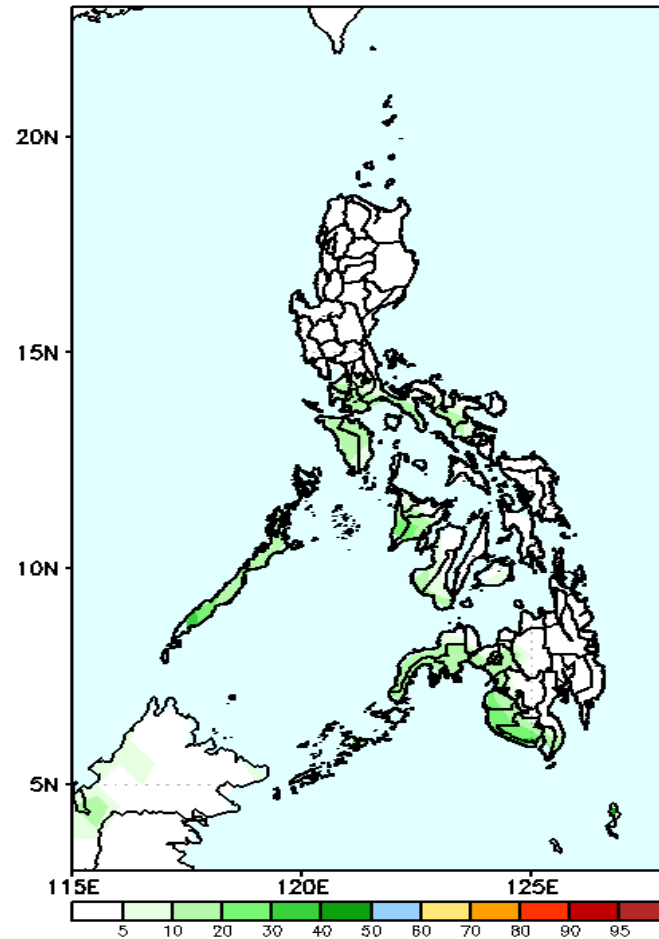
Week 2: July 12-18, 2021

GEFS Week-2 Exceedance Prob. > 100mm
Valid: 20210712 – 20210718



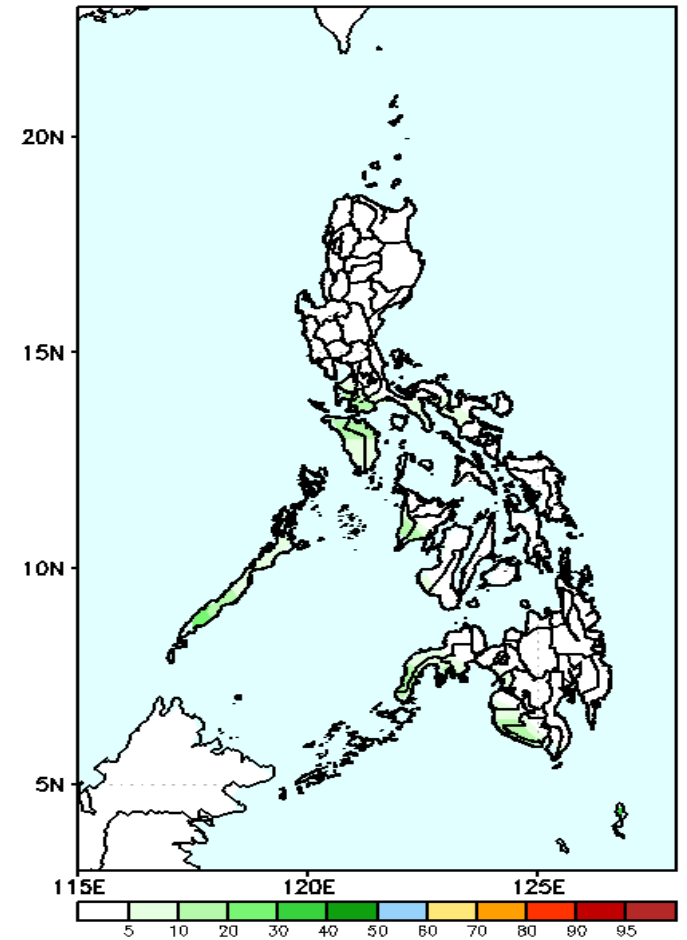
Less probability of rainfall to exceed 100mm in most parts of the country during the forecast period.

GEFS Week-2 Exceedance Prob. > 150mm
Valid: 20210712 – 20210718



Less probability of rainfall to exceed 150mm in most parts of the country during the forecast period.

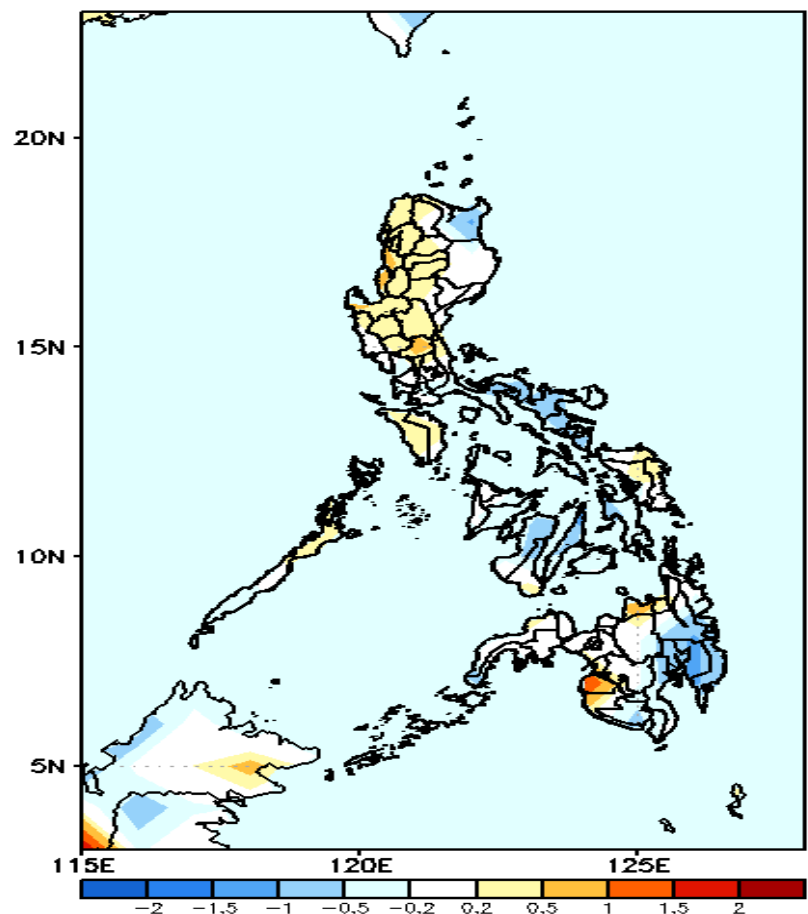
GEFS Week-2 Exceedance Prob. > 200mm
Valid: 20210712 – 20210718



Less probability of rainfall to exceed 200mm in most parts of the country during the forecast period.

GEFS Week-1 & 2 Forecasts: T2m Anomaly

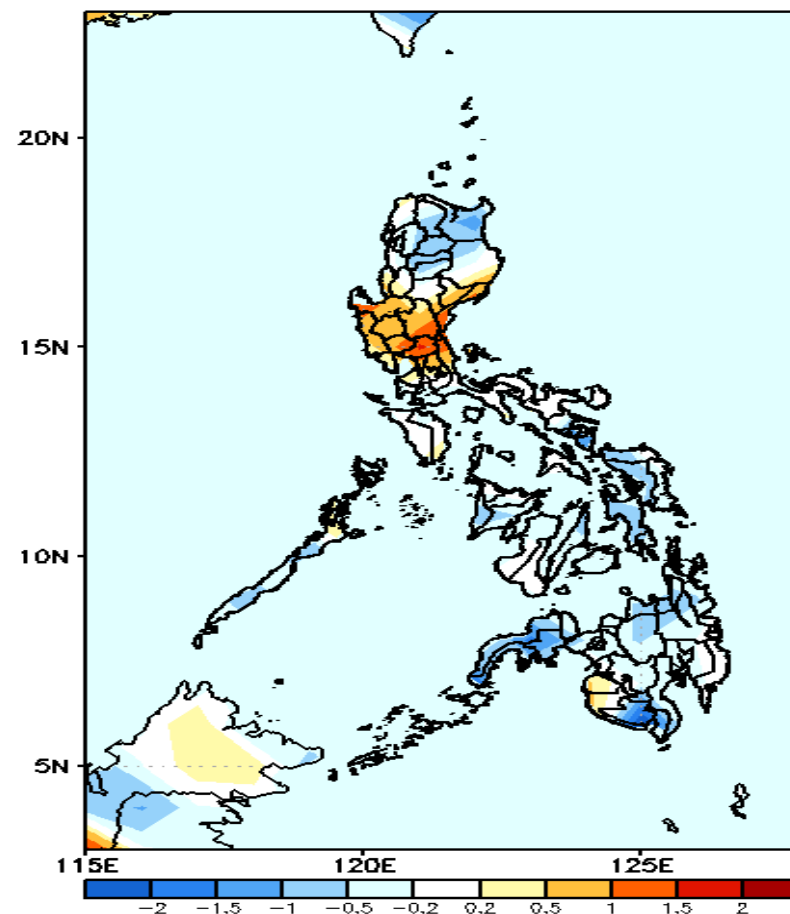
GEFS Week-1 T2m Anomaly
Valid: 20210705 — 20210711



2m Temperature Week 1: July 05-11, 2021

Average to slightly warmer than average surface air temperature will likely experience in most parts of Luzon, Eastern Visayas and northern and western Mindanao while average to slightly cooler for the rest of the country during the forecast period.

GEFS Week-2 T2m Anomaly
Valid: 20210712 — 20210718



2m Temperature Week 2: July 12-18, 2021

Average to slightly cooler than average surface air temperature will likely experience in most parts of the country except in most parts of Central Luzon, Pangasinan and Quirino where slightly warmer to warmer than average temperature is expected during the forecast period.