



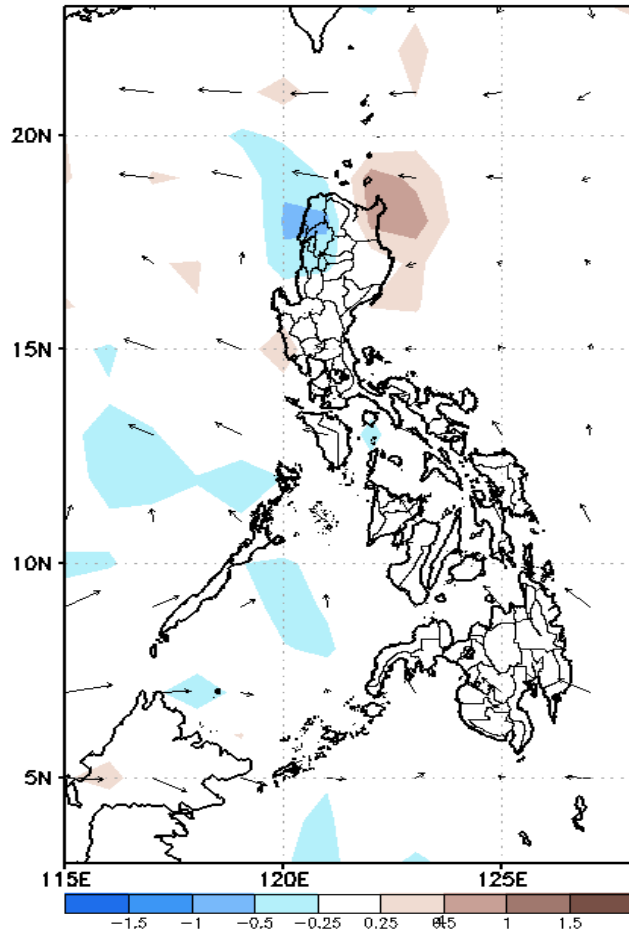
Week 1 & Week 2 Forecast for the Philippines using GEFS Model



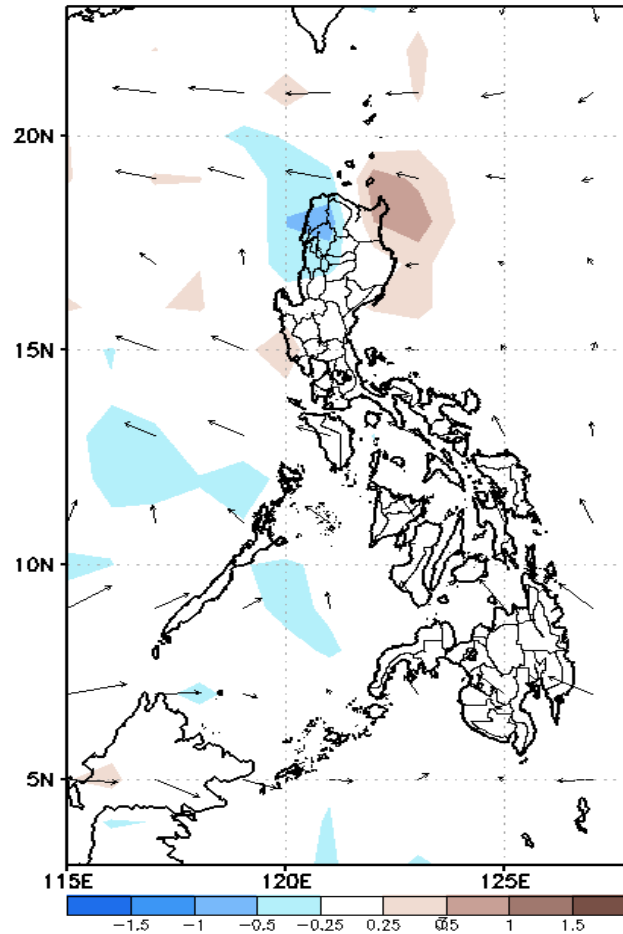
GEFS Week-1 Forecasts: Divergence & Wind Anomaly

Week 1: October 05-11, 2020

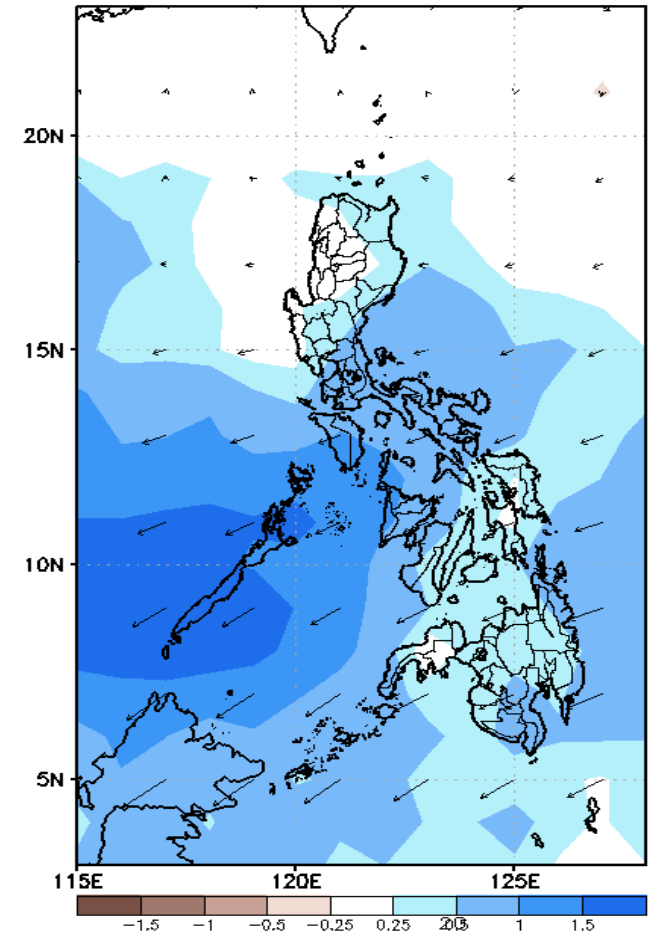
GEFS Week-1 850-hPa Divergence and Wind Anom.
Valid: 20201005 - 20201011



GEFS Week-1 700-hPa Divergence and Wind Anom.
Valid: 20201005 - 20201011



GEFS Week-1 200-hPa Divergence and Wind Anom.
Valid: 20201005 - 20201011

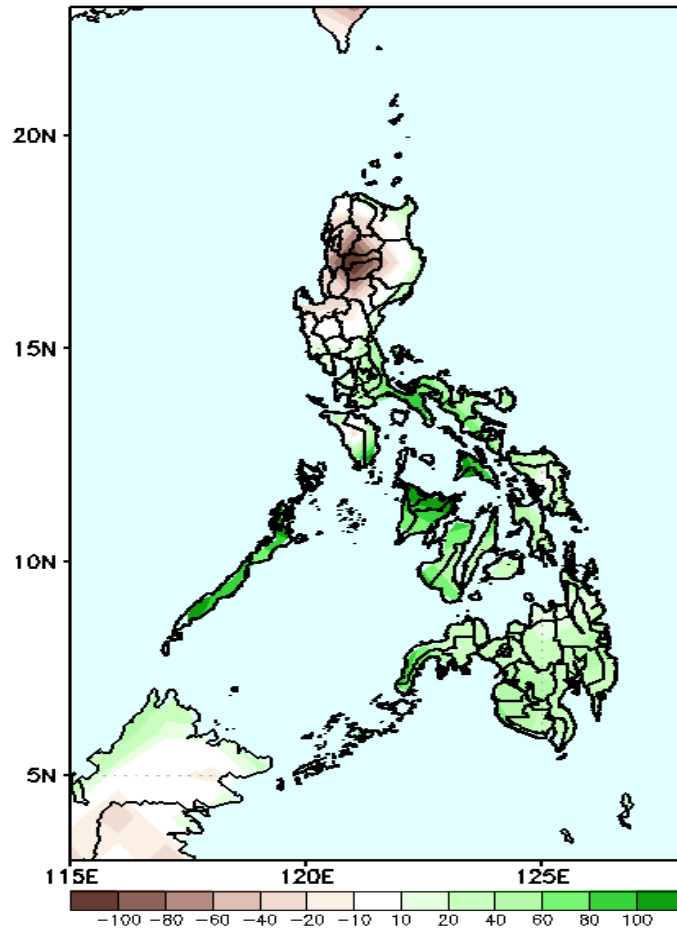


Upper level (200hPa) Divergence suggest likelihood of precipitation in most parts of the country during the forecast period. Southwest monsoon affecting parts of western Luzon and Visayas while easterlies affecting most parts of the country during the forecast period.

Precipitation Anomaly and Exceedance Probability > 25/50 mm

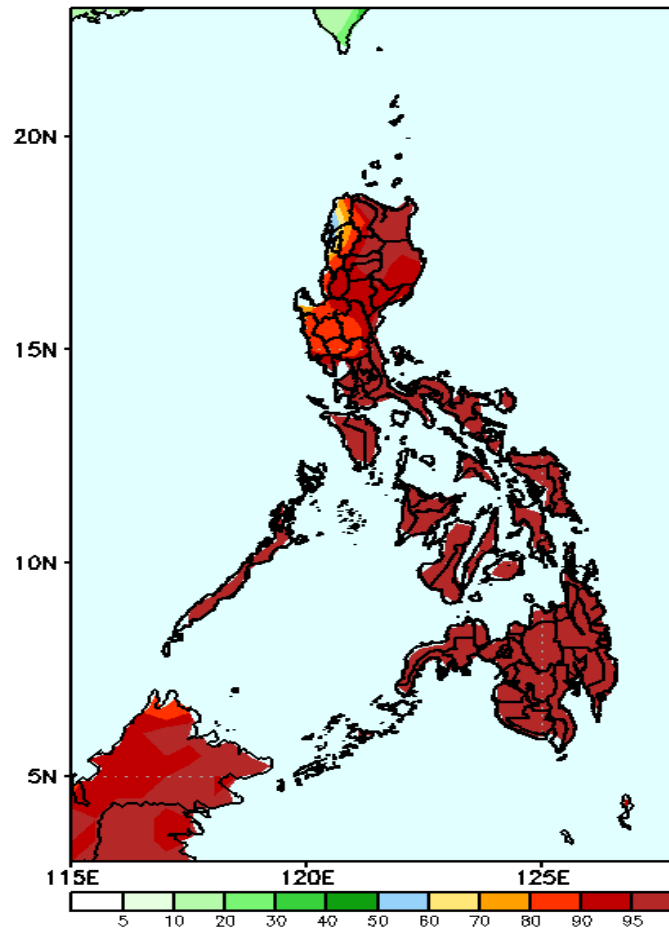
Week 1: October 05-11, 2020

GEFS Week-1 Precip Anomaly
Valid: 20201005 - 20201011



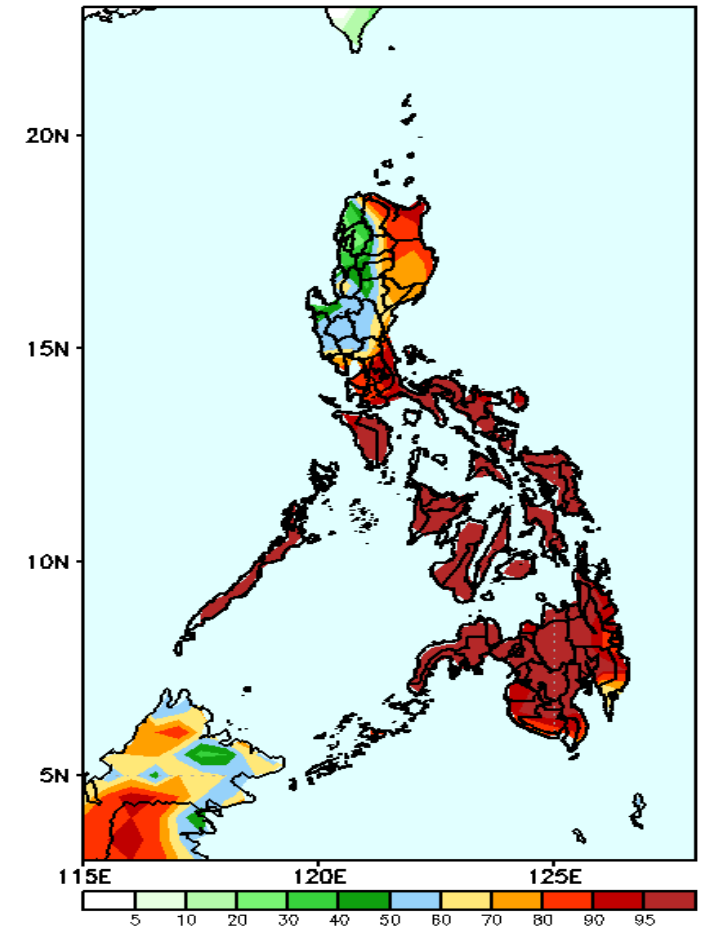
Rainfall deficit of up to 100mm in Cordillera Region and Ilocos Region is expected while increase of rainfall up to 100mm in Visayas and 20-60mm in Mindanao during the forecast period.

GEFS Week-1 Exceedance Prob. > 25mm
Valid: 20201005 - 20201011



High probability of rainfall to exceed 25mm in most parts the country is expected during the forecast period.

GEFS Week-1 Exceedance Prob. > 50mm
Valid: 20201005 - 20201011

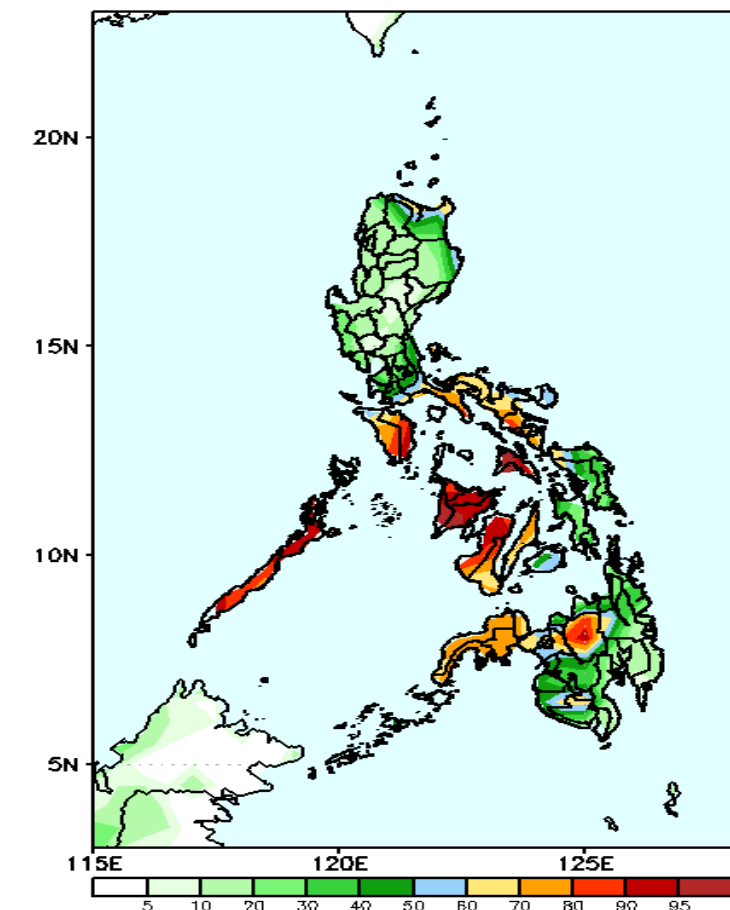


High probability of rainfall to exceed 50mm in most parts the country is expected except in the western parts of Luzon where there is 40-65% probability during the forecast period.

Exceedance Probability > 100/150/200 mm

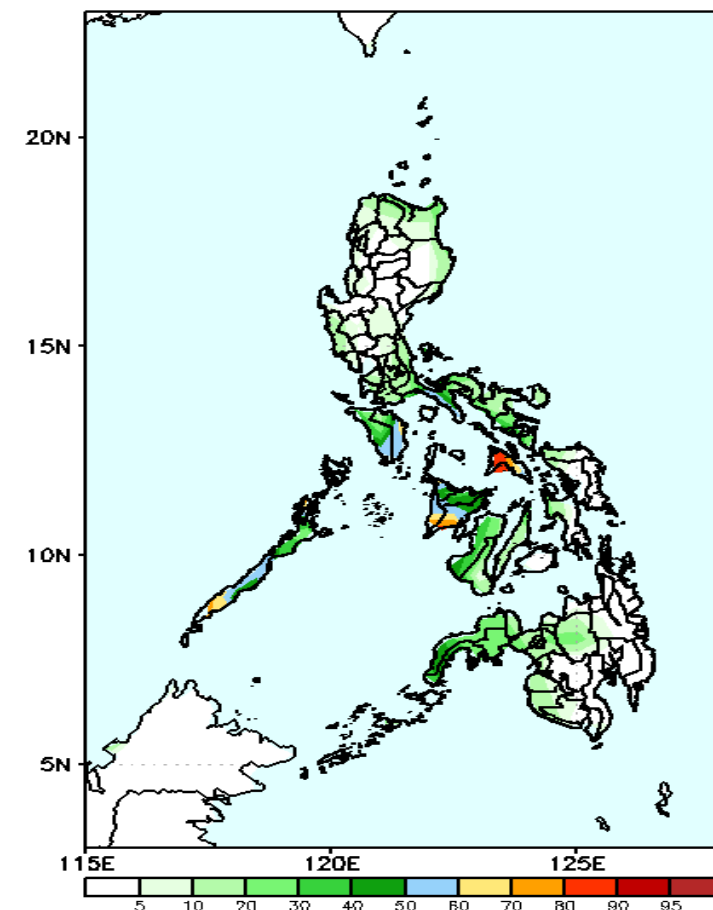
Week 1: October 05-11, 2020

GEFS Week-1 Exceedance Prob. > 100mm
Valid: 20201005 – 20201011



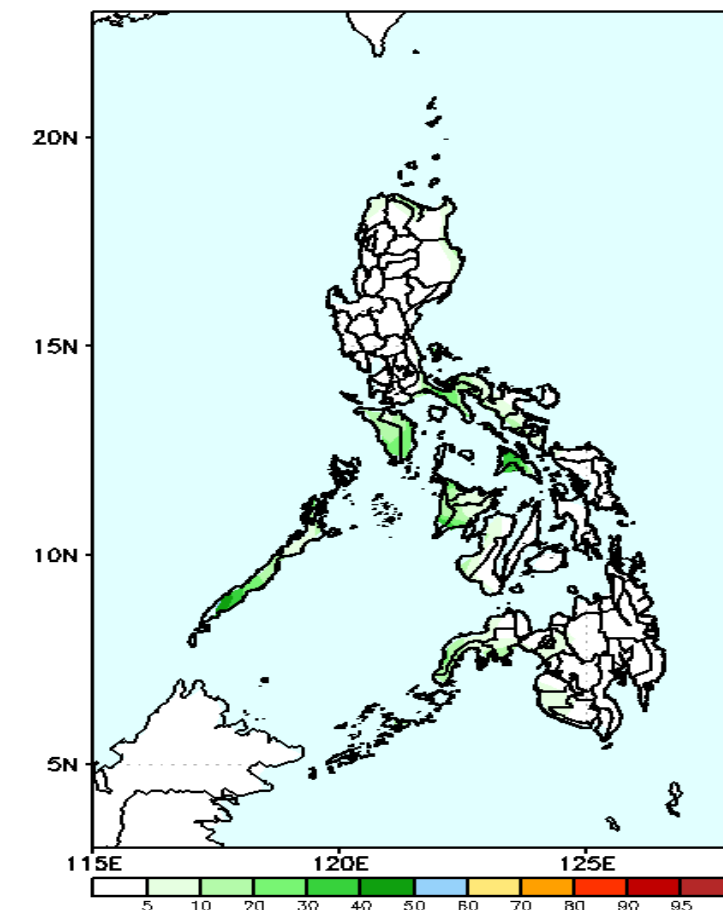
High probability of rainfall to exceed 100mm in Mindoro, southern Luzon, Masbate, most parts of western Visayas, Bukidnon and Zamboanga Peninsula while 20-50% probability for the rest of the country during the forecast period.

GEFS Week-1 Exceedance Prob. > 150mm
Valid: 20201005 – 20201011



Less probability of rainfall to exceed 150mm in most parts of the country, except in Masbate and western Panay Island where there is 60-90% probability during the forecast period.

GEFS Week-1 Exceedance Prob. > 200mm
Valid: 20201005 – 20201011



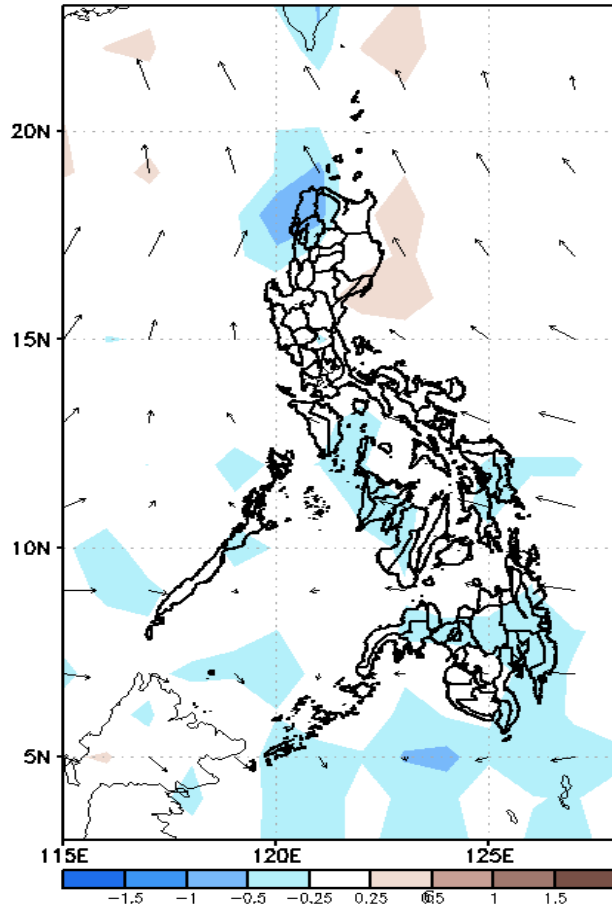
Less probability of rainfall to exceed 200mm in most parts of the country during the forecast period.



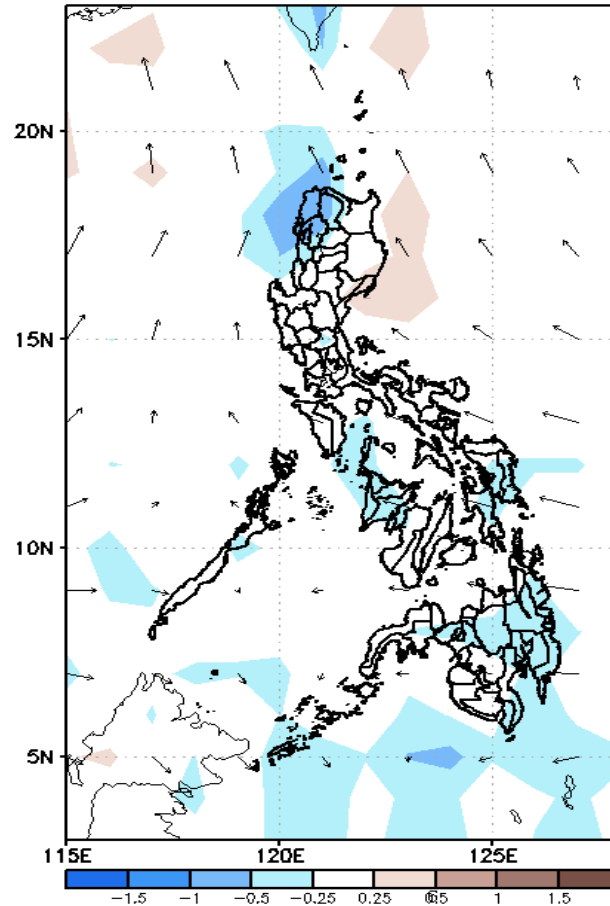
GEFS Week-2 Forecasts: Divergence & Wind Anomaly

Week 2: Oct 12-18, 2020

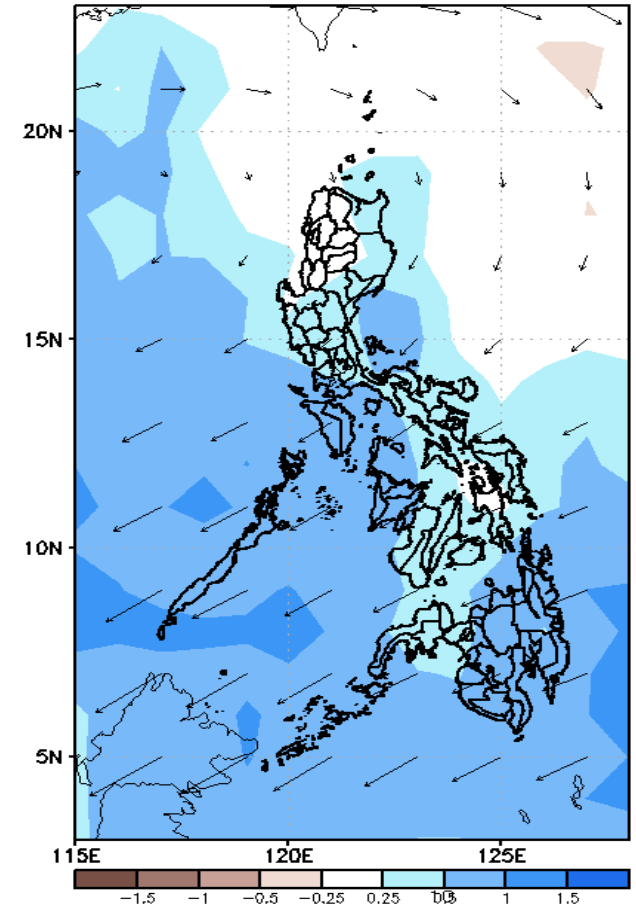
GEFS Week-2 850-hPa Divergence and Wind Anom
Valid: 20201012 - 20201018



GEFS Week-2 700-hPa Divergence and Wind Anom
Valid: 20201012 - 20201018



GEFS week-2 200-hPa Divergence and Wind Anom
Valid: 20201012 - 20201018

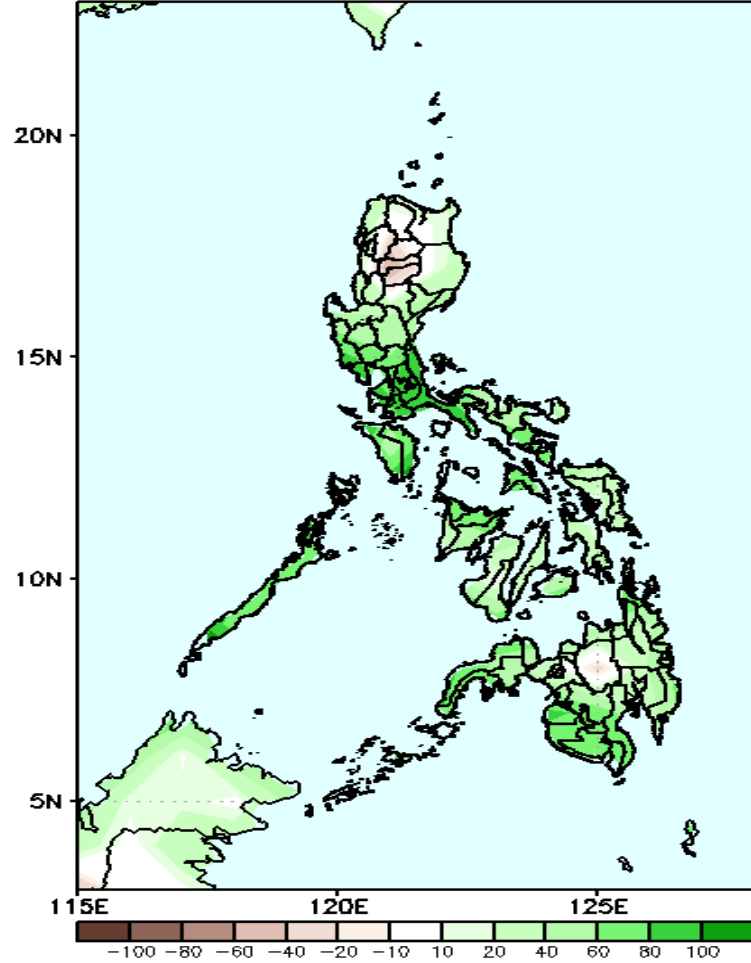


Upper level (200hPa) Divergence suggest likelihood of precipitation in most parts of the country during the forecast period. Southwest monsoon affecting north-western Luzon while easterlies affecting most parts of the country during the forecast period.

Precipitation Anomaly and Exceedance Probability > 25/50 mm

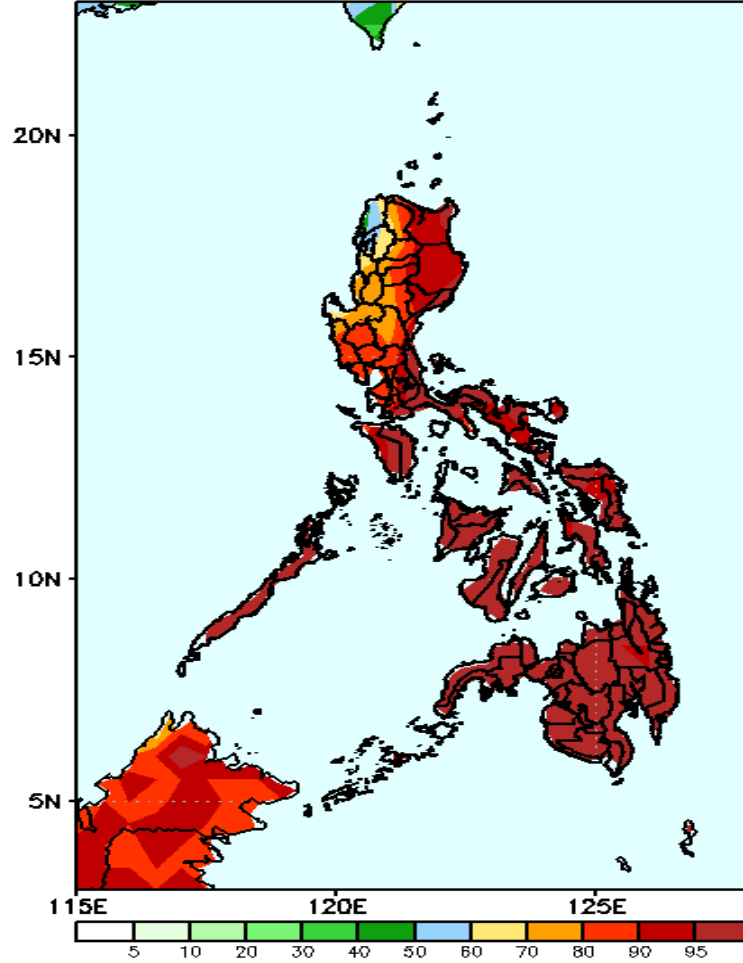
Week 2: Oct 12-18, 2020

GEFS Week-2 Precip. Anomaly
Valid: 20201012 - 20201018



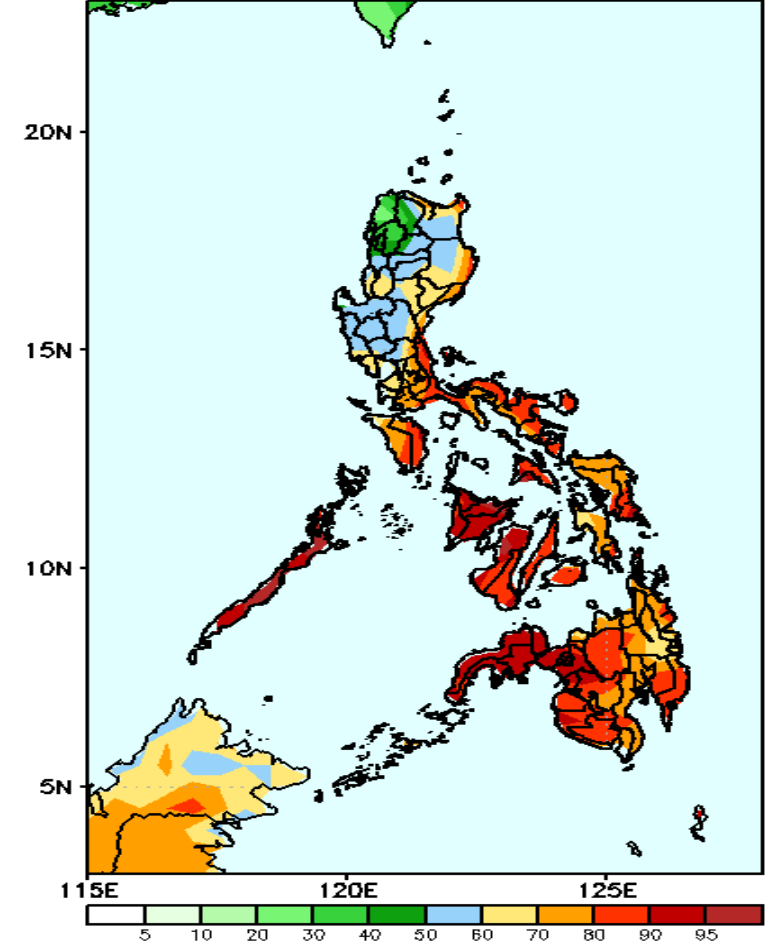
Increase of rainfall of 40-100mm in most parts of the country is expected except in northern half of Luzon during the forecast period.

GEFS Week-2 Exceedance Prob. > 25mm
Valid: 20201012 - 20201018



High probability of rainfall to exceed 25mm in most parts the country is expected during the forecast period.

GEFS Week-2 Exceedance Prob. > 50mm
Valid: 20201012 - 20201018

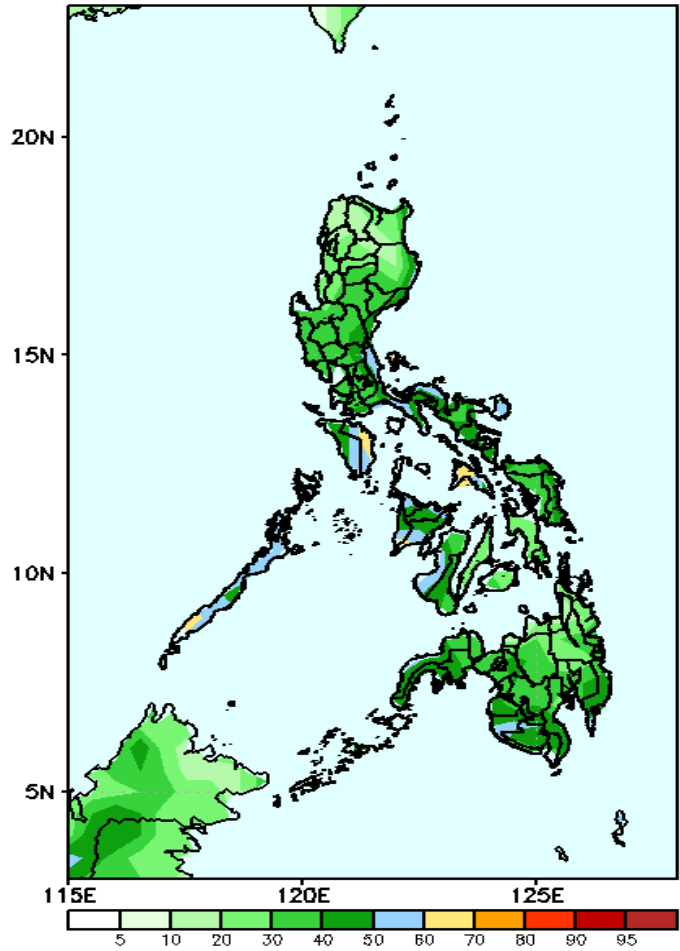


High probability of rainfall to exceed 50mm in most parts the country is expected except in the western and central parts of Luzon where there is 50-70% probability during the forecast period.

Exceedance Probability > 100/150/200 mm

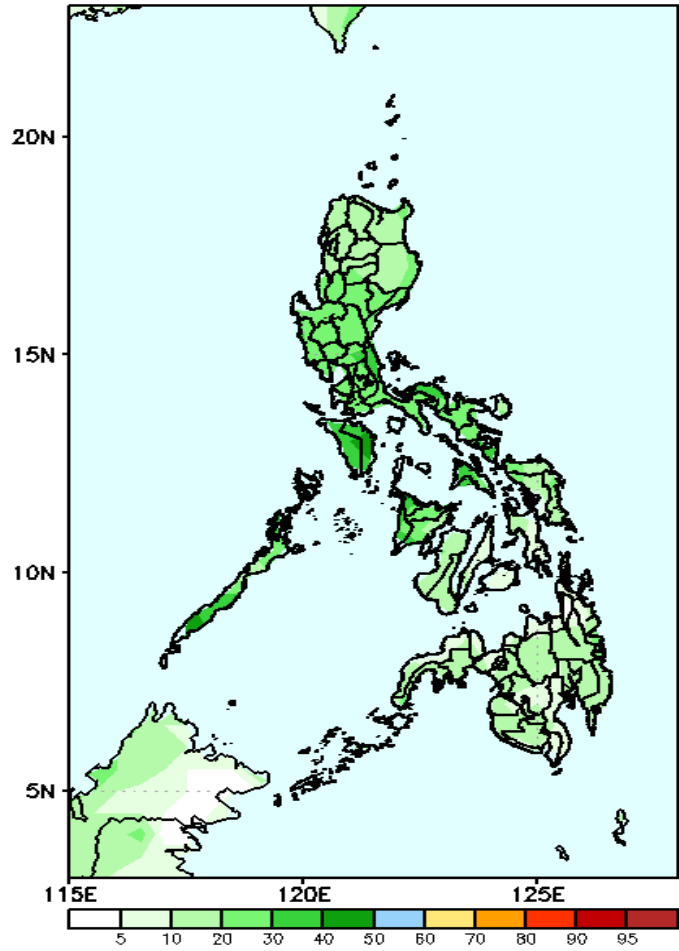
Week 2: Oct 12-18, 2020

GEFS Week-2 Exceedance Prob. > 100mm
Valid: 20201012 – 20201018



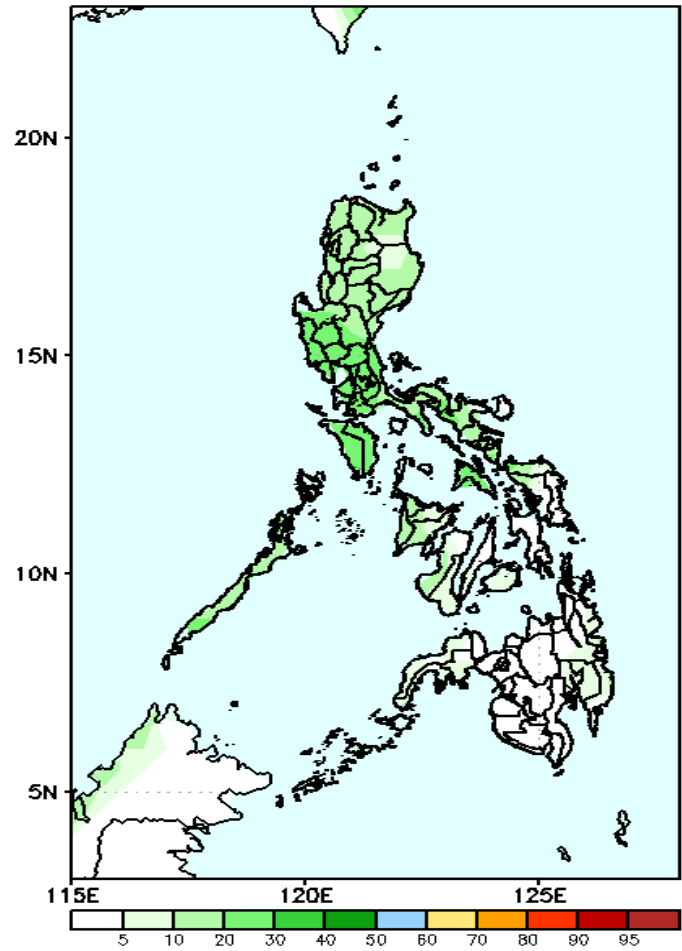
40-60% probability of rainfall to exceed 100mm in most parts of the country is expected during the forecast period.

GEFS Week-2 Exceedance Prob. > 150mm
Valid: 20201012 – 20201018



40-50% probability of rainfall to exceed 150mm in most parts of Luzon and Visayas is expected while less likely in Mindanao during the forecast period.

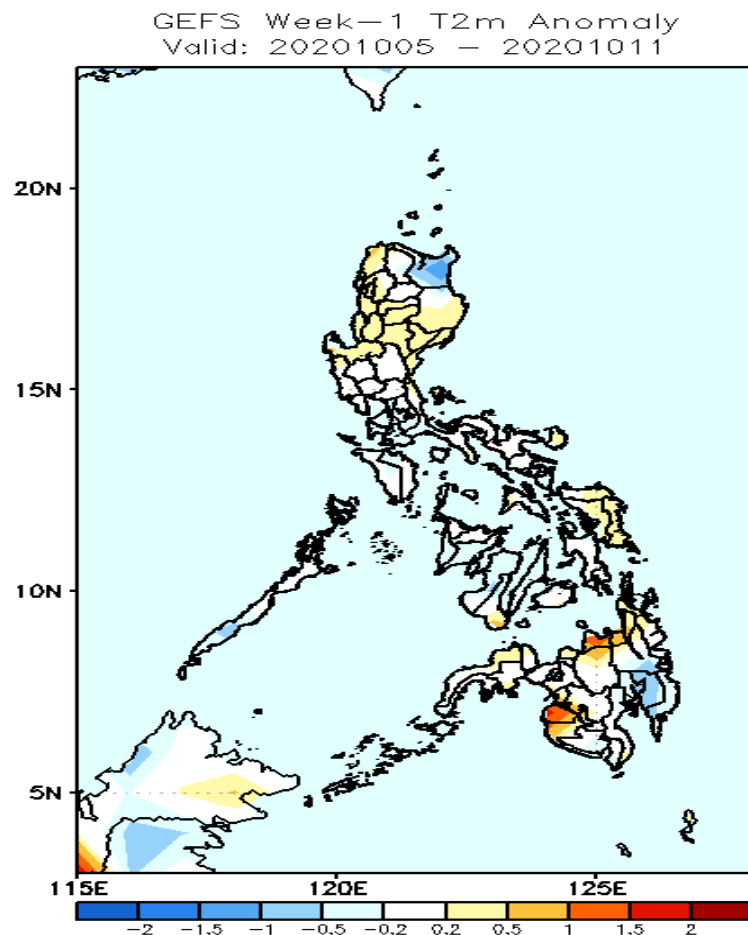
GEFS Week-2 Exceedance Prob. > 200mm
Valid: 20201012 – 20201018



40-50% probability of rainfall to exceed 200mm in most parts of Luzon and Visayas is expected while less likely in Mindanao during the forecast period.

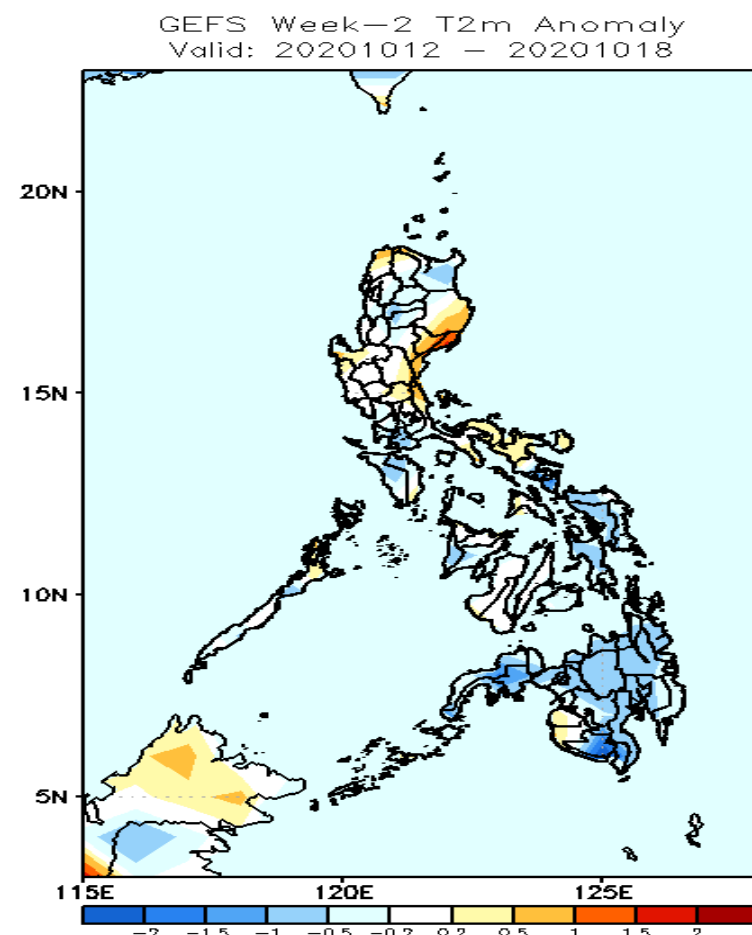


GEFS Week-1 & 2 Forecasts: T2m Anomaly



2m Temperature Week 1: October 05-11, 2020

Average to slightly warmer than average surface air temperature in most parts of the country is expected except in the provinces of Cagayan and Davao where slightly cooler temperature is more likely during the forecast period.



2m Temperature Week 2: Oct 12-18, 2020

Slightly cooler than average surface air temperature will likely experience in most parts of Visayas and Mindanao while slightly warmer surface air temperature in Luzon during the forecast period.