



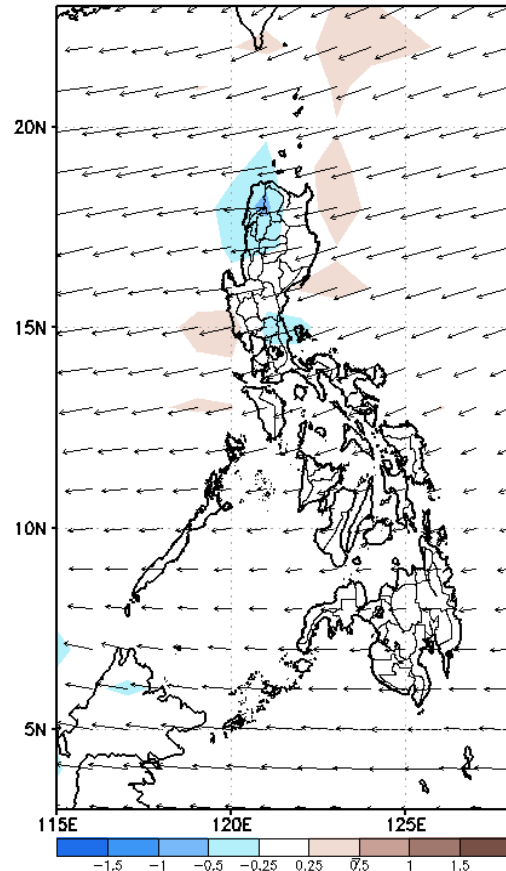
# Week 1 & Week 2 Forecast for the Philippines using GEFS Model



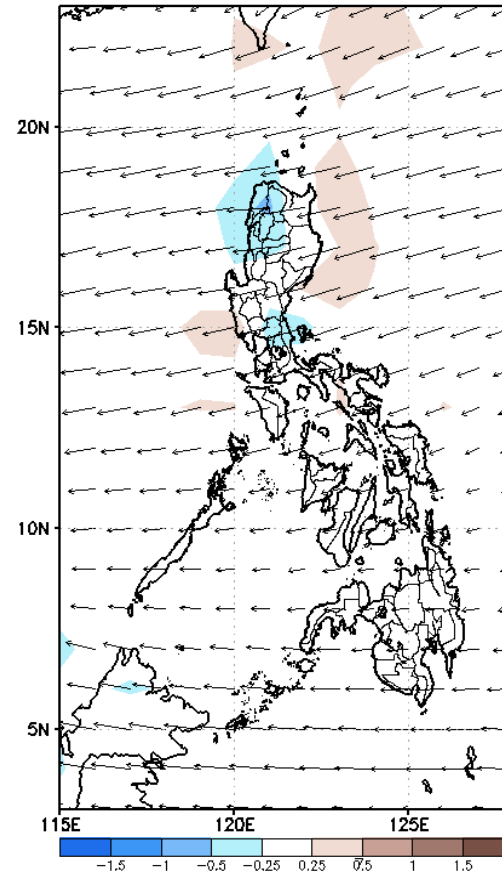
# GEFS Week-1 Forecasts: Wind Anomaly Forecast

Week 1: Oct 5 - Oct 11, 2022

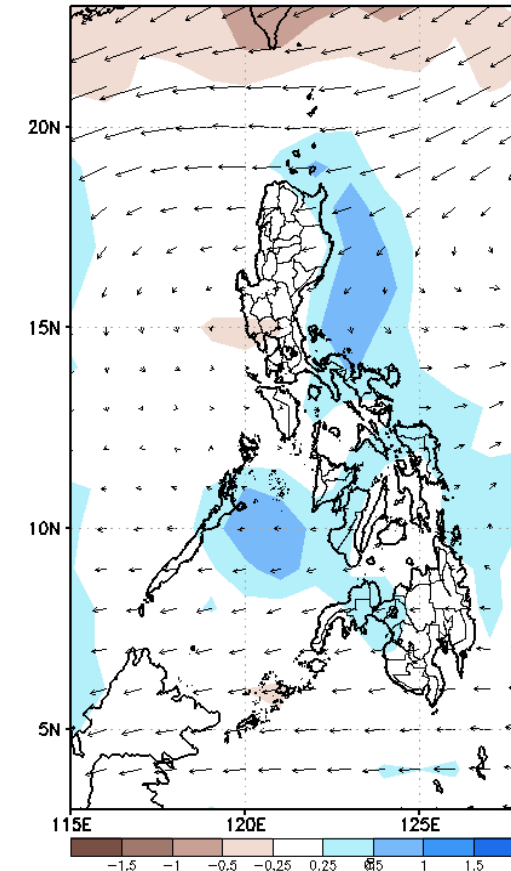
GEFS Week-1 850-hPa Divergence and Wind Anomaly  
Valid: 20221005 - 20221011



GEFS Week-1 700-hPa Divergence and Wind Anomaly  
Valid: 20221005 - 20221011



GEFS Week-1 200-hPa Divergence and Wind Anomaly  
Valid: 20221005 - 20221011

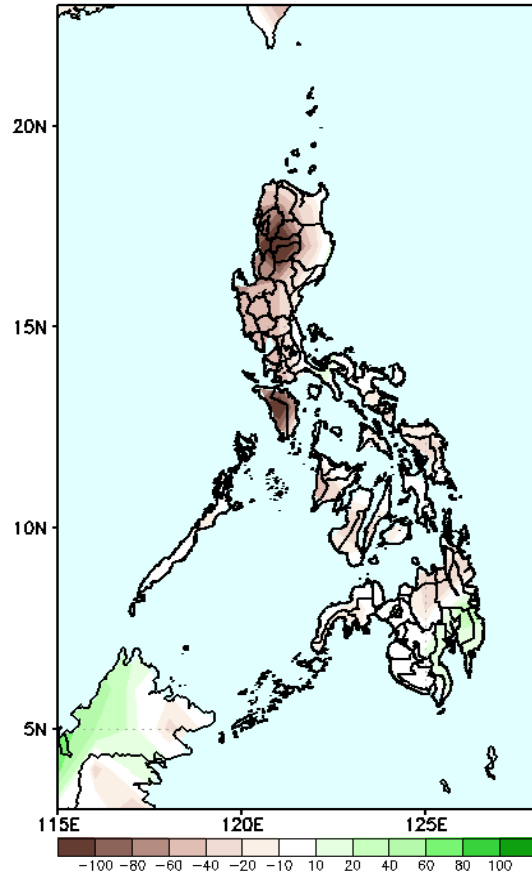


Easterlies affecting most of the country during the forecast period.

# Precipitation Anomaly and Exceedance Probability > 25/50 mm

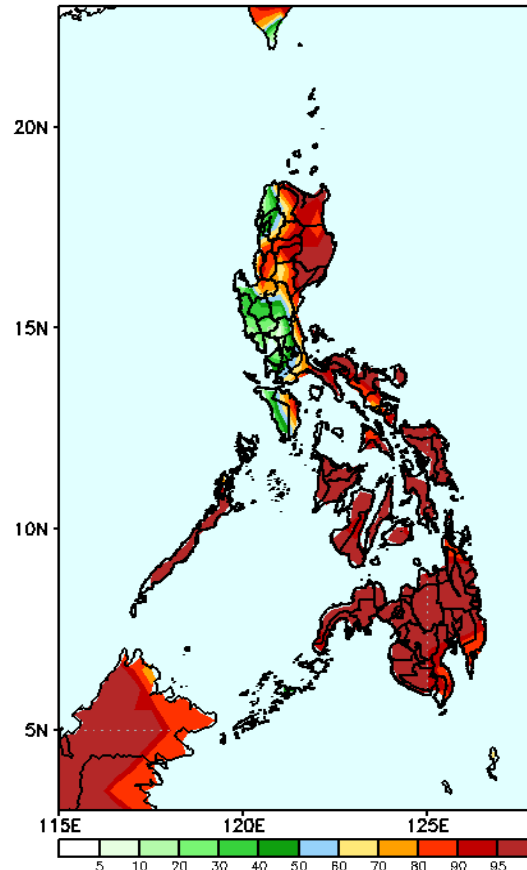
**Week 1: Oct 5 - Oct 11, 2022**

GEFS Week-1 Precip. Anomaly  
Valid: 20221005 - 20221011



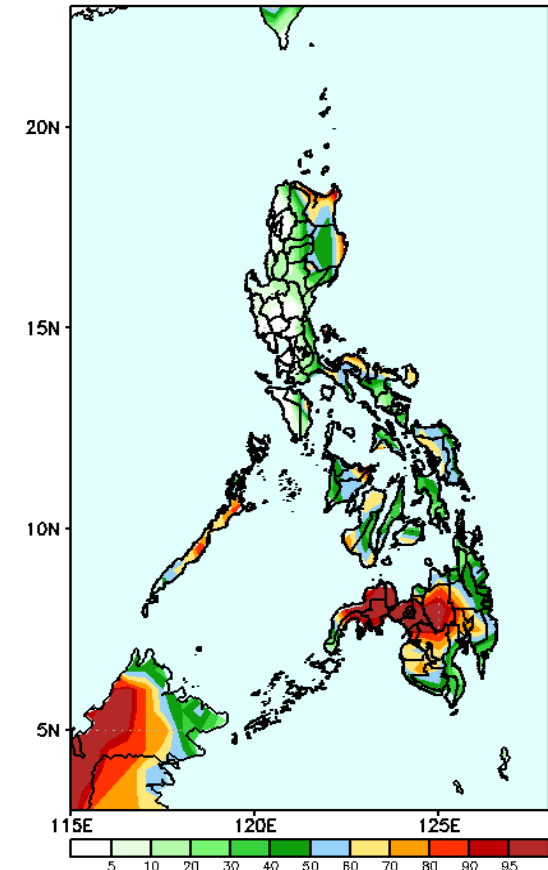
40 – 100mm rainfall deficit will be likely in most parts of the country except in Davao Region where an increase of rainfall of 20 – 60mm is expected during the forecast period .

GEFS Week-1 Exceedance Prob. > 25mm  
Valid: 20221005 - 20221011



High probability of rainfall to exceed 25mm in most parts of the country except in most areas of western Luzon during the forecast period.

GEFS Week-1 Exceedance Prob. > 50mm  
Valid: 20221005 - 20221011



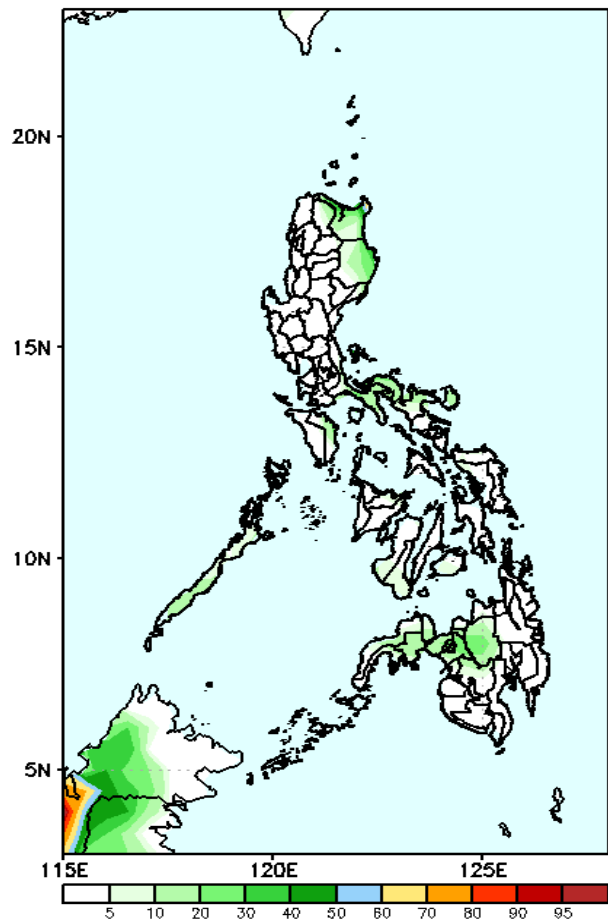
High probability of rainfall to exceed 50mm in some parts Cagayan, Isabela, Palawan, some areas of Bicol Region and Visayas and most parts of Mindanao during the forecast period.



# Exceedance Probability > 100/150/200 mm

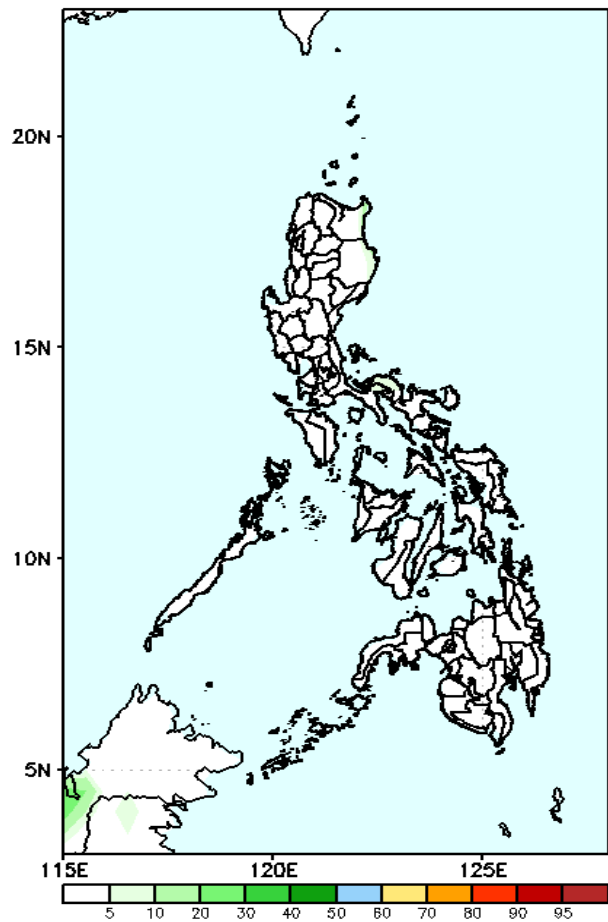
Week 1: Oct 5 - Oct 11, 2022

GEFS Week-1 Exceedance Prob. > 100mm  
Valid: 20221005 - 20221011



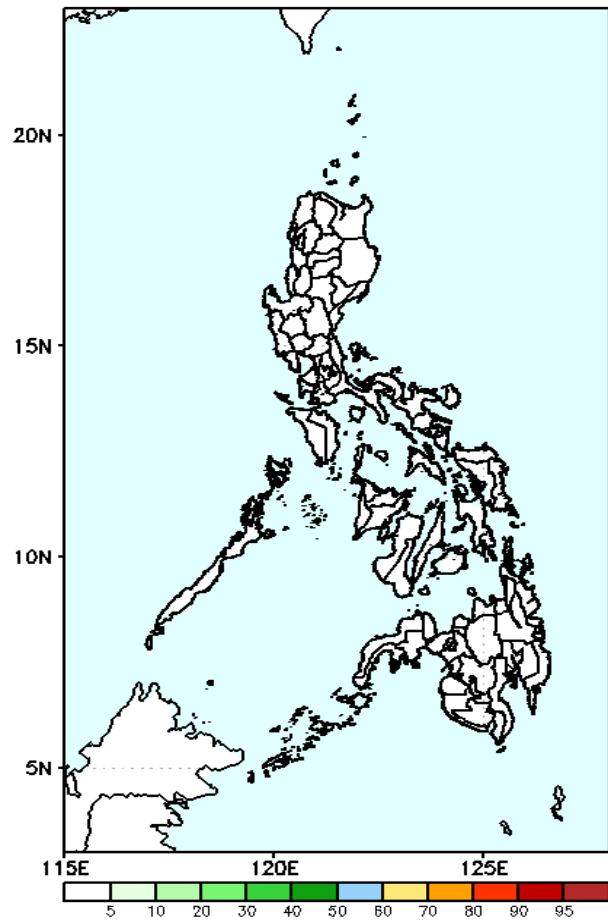
Low probability of rainfall to exceed 100mm in most parts of the country during the forecast period.

GEFS Week-1 Exceedance Prob. > 150mm  
Valid: 20221005 - 20221011



Low probability of rainfall to exceed 150mm in most parts of the country during the forecast period.

GEFS Week-1 Exceedance Prob. > 200mm  
Valid: 20221005 - 20221011

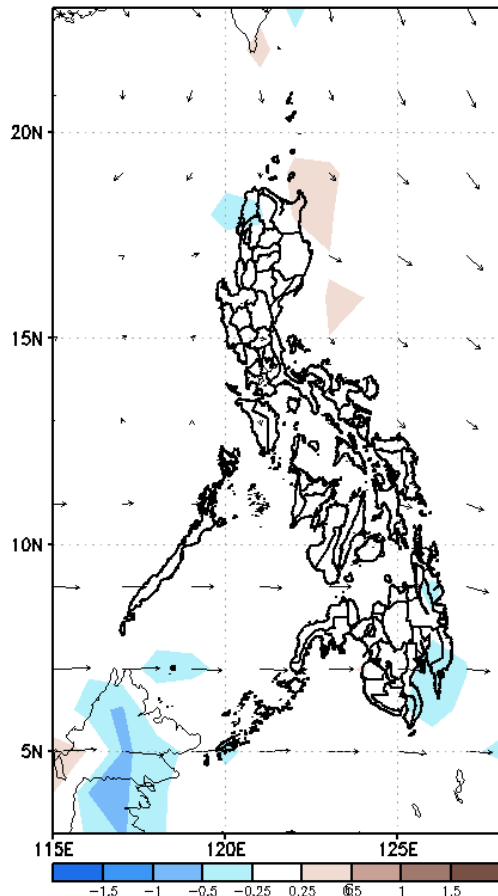


Low probability of rainfall to exceed 200mm in most parts of the country during the forecast period.

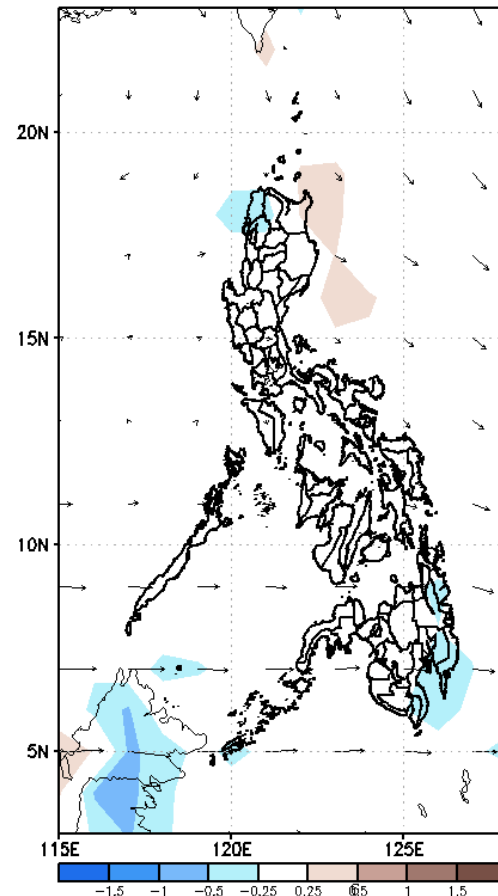
# GEFS Week-2 Forecasts: Wind Anomaly Forecast

Week 2: Oct 12 - Oct 18, 2022

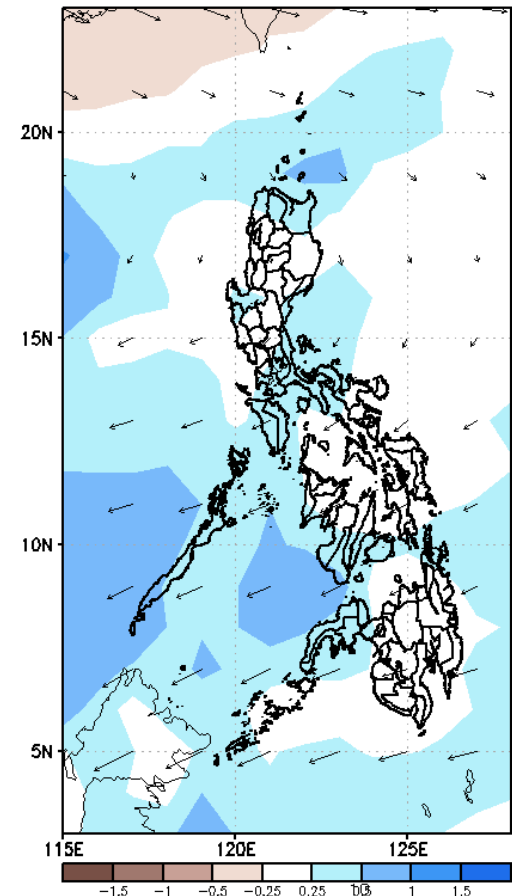
GEFS Week-2 850-hPa Divergence and Wind Anomaly  
Valid: 20221012 - 20221018



GEFS Week-2 700-hPa Divergence and Wind Anomaly  
Valid: 20221012 - 20221018



GEFS week-2 200-hPa Divergence and Wind Anomaly  
Valid: 20221012 - 20221018

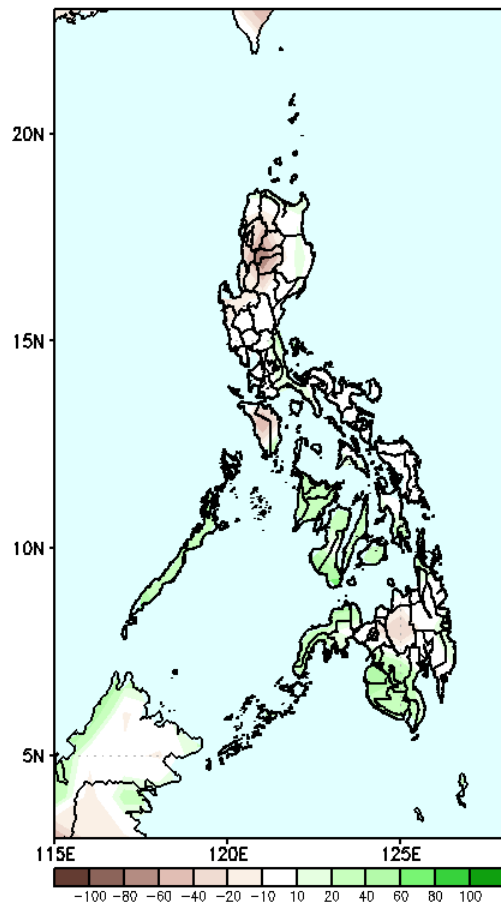


Westerly winds affecting Mindanao while Northeasterly winds affecting the rest of the country during the forecast period.

# Precipitation Anomaly and Exceedance Probability > 25/50 mm

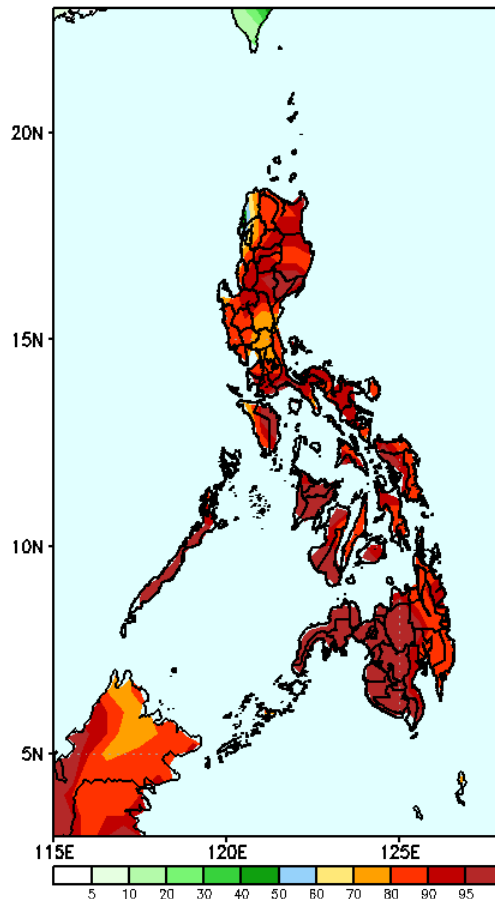
**Week 2: Oct 12 - Oct 18, 2022**

GEFS Week-2 Precip Anomaly  
Valid: 20221012 - 20221018



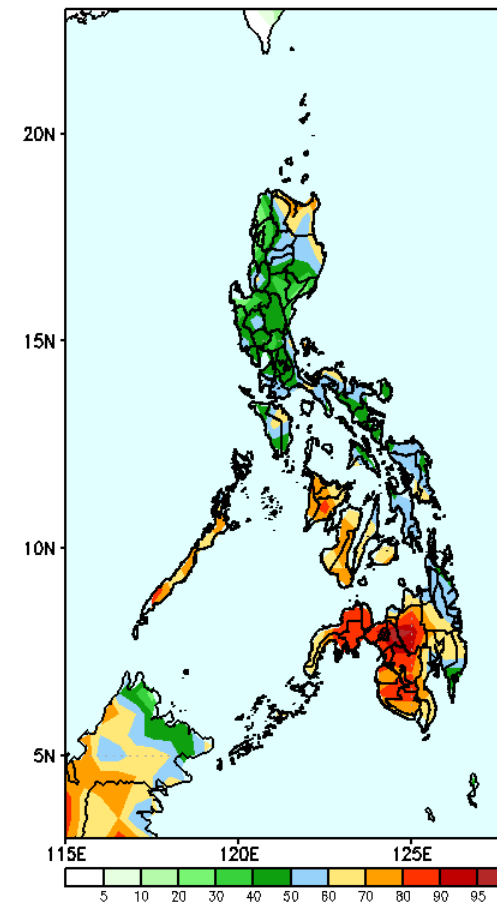
40-80mm increase of rainfall will be likely in most parts Palawan, Western and Central Visayas, Zamboanga Peninsula, BARMM, and SOCCSARGEN while rainfall deficit of 40 - 60mm in some parts of Luzon is expected during the forecast period.

GEFS Week-2 Exceedance Prob. > 25mm  
Valid: 20221012 - 20221018



High probability of rainfall to exceed 25mm in most parts of the country during the forecast period.

GEFS Week-2 Exceedance Prob. > 50mm  
Valid: 20221012 - 20221018

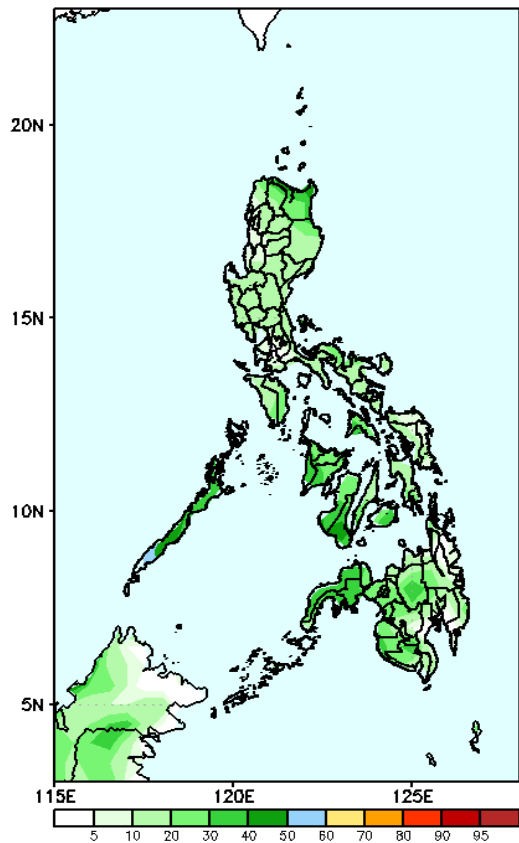


High probability of rainfall to exceed 50mm in some parts of Cagayan Valley, Palawan, some areas of Bicol Region and most parts of Visayas and Mindanao while less likely for the rest of the country during the forecast period

# Exceedance Probability > 100/150/200 mm

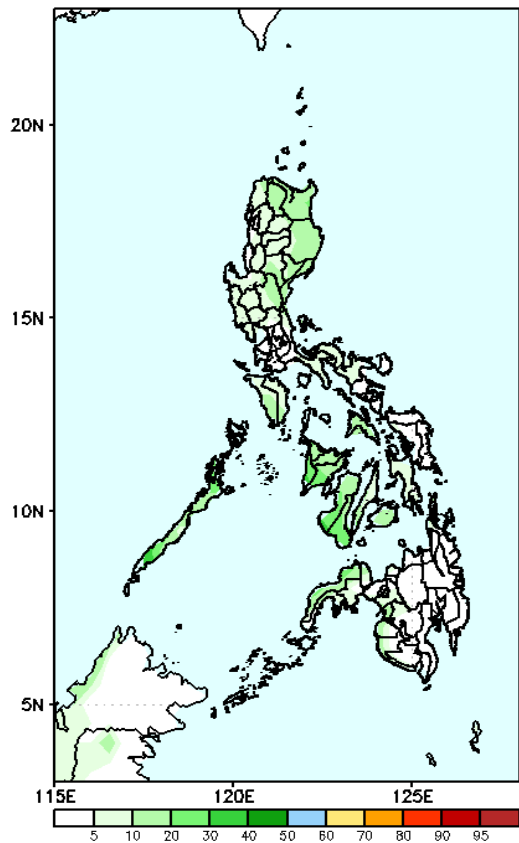
Week 2: Oct 12 - Oct 18, 2022

GEFS Week-2 Exceedance Prob. > 100mm  
Valid: 20221012 - 20221018



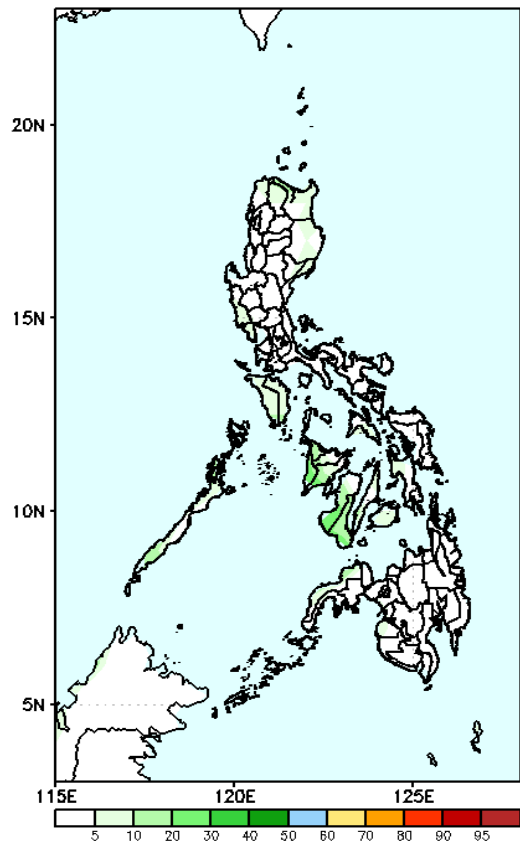
Low probability of rainfall to exceed 100mm in most parts of the country during the forecast period.

GEFS Week-2 Exceedance Prob. > 150mm  
Valid: 20221012 - 20221018



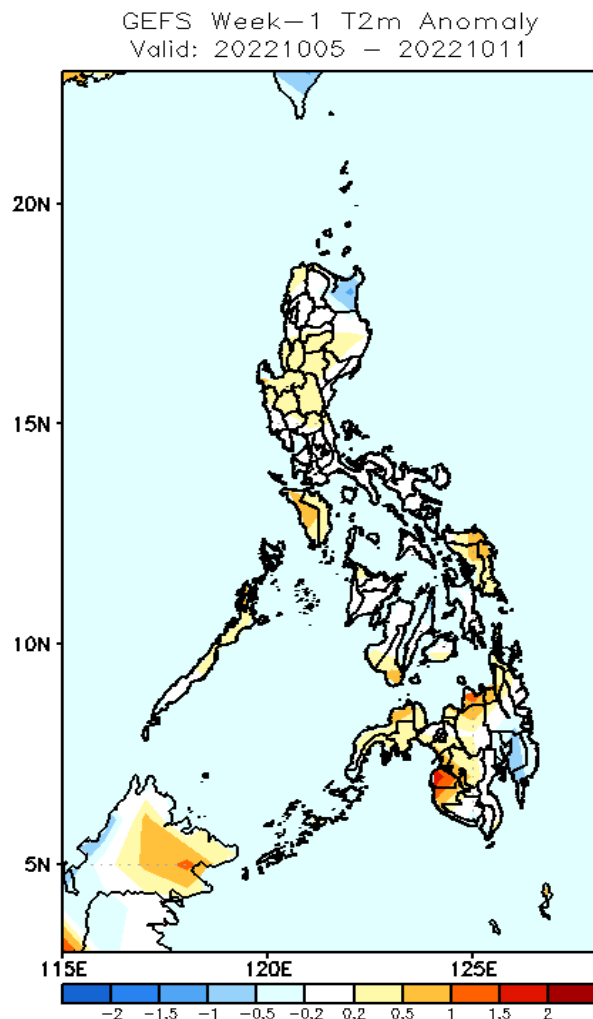
Low probability of rainfall to exceed 150mm in most parts of the country during the forecast period.

GEFS Week-2 Exceedance Prob. > 200mm  
Valid: 20221012 - 20221018



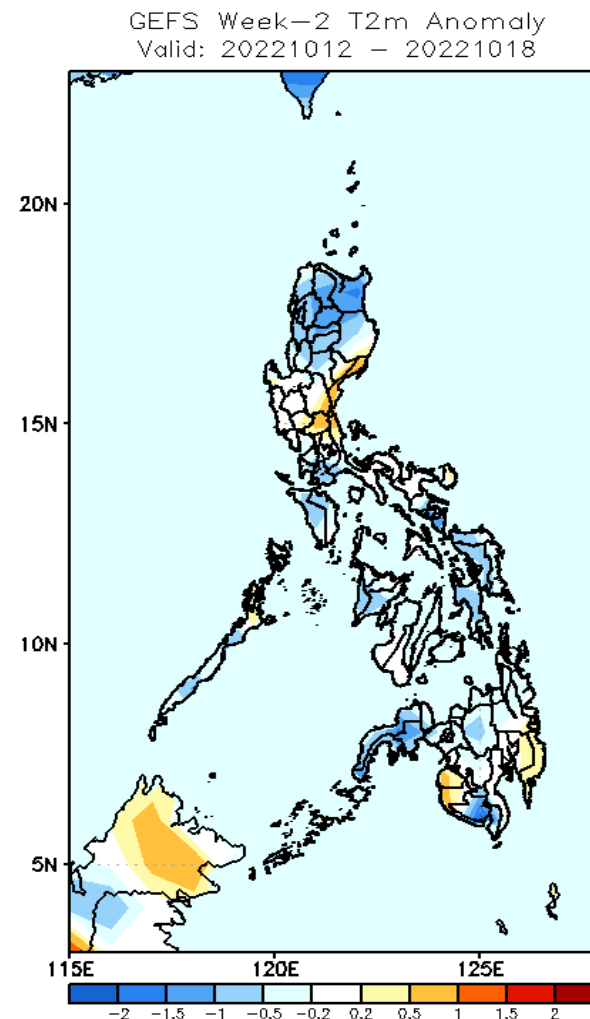
Low probability of rainfall to exceed 200mm in most parts of the country during the forecast period.

# GEFS Week-1 & 2 Forecasts: T2m Anomaly



## 2m Temperature Week 1: Oct 5 - Oct 11, 2022

Slightly cooler to cooler than average surface air temperature will likely experience in Cagayan and Davao Region while average to warmer than average surface air temperature for the rest of the country during the forecast period.



## 2m Temperature Week 2: Oct 12 - Oct 18, 2022

Slightly cooler than average surface air temperature will likely experience in most parts of the country except in some parts of Central Luzon, Catanduanes, Lanao del Sur, Maguindanao and Davao Region where average to warmer than average surface air temperature will be likely for the rest of the country during the forecast period.