



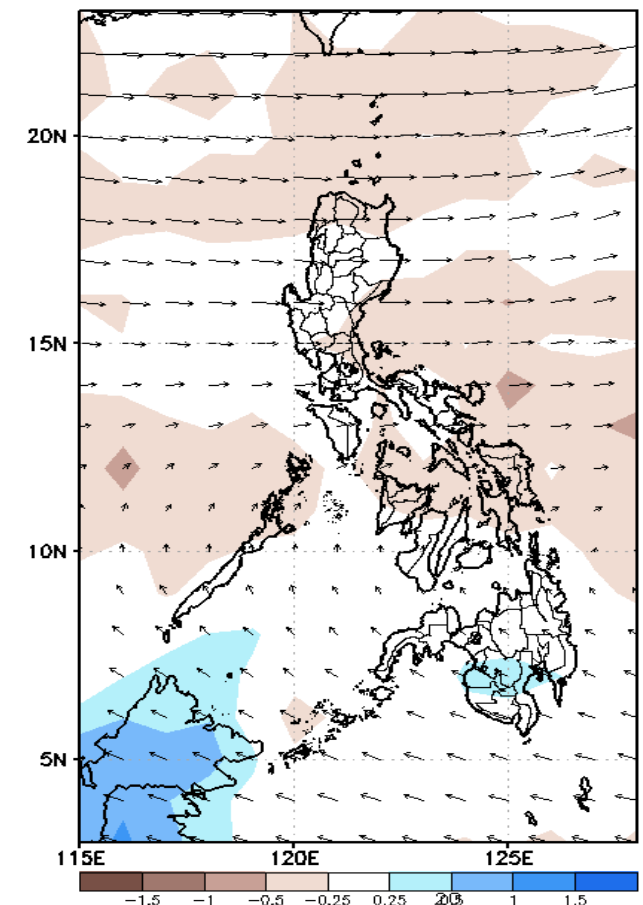
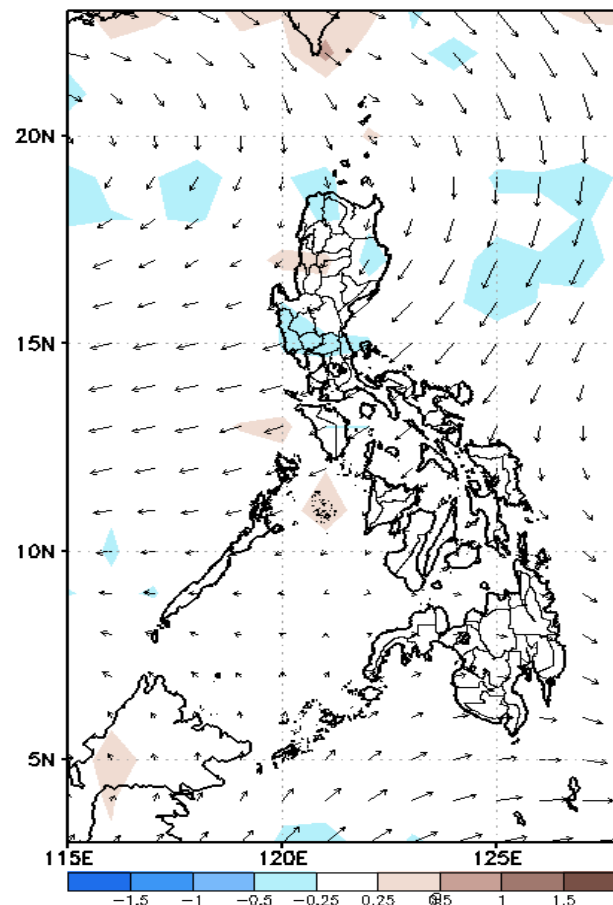
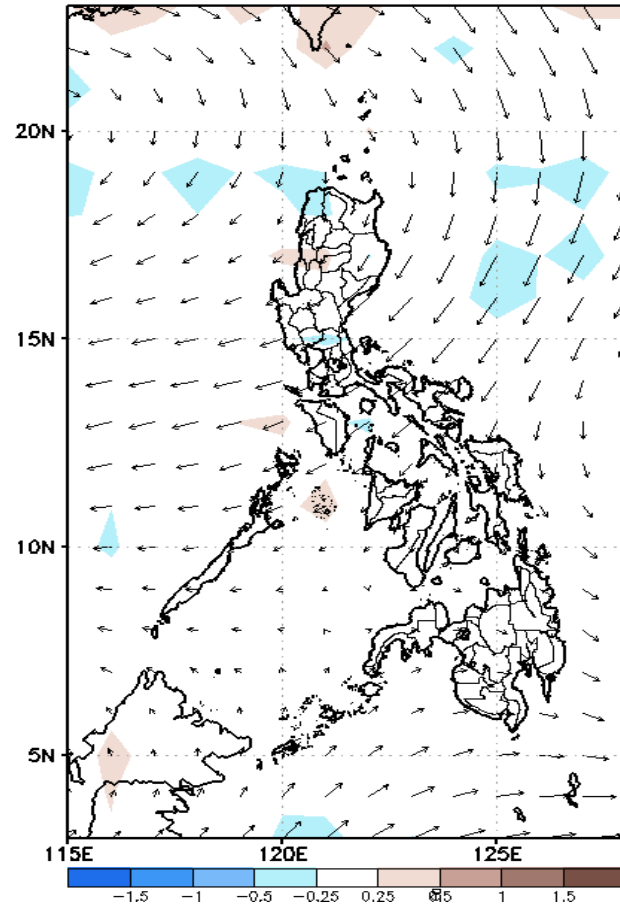
# Week 1 & Week 2 Forecast for the Philippines using GEFS Model



# GEFS Week-1 Forecasts: Divergence & Wind Anomaly

**Week 1: April 05-11, 2021**

GEFS Week-1 850-hPa Divergence and Wind Anom  
Valid: 20210405 - 20210411

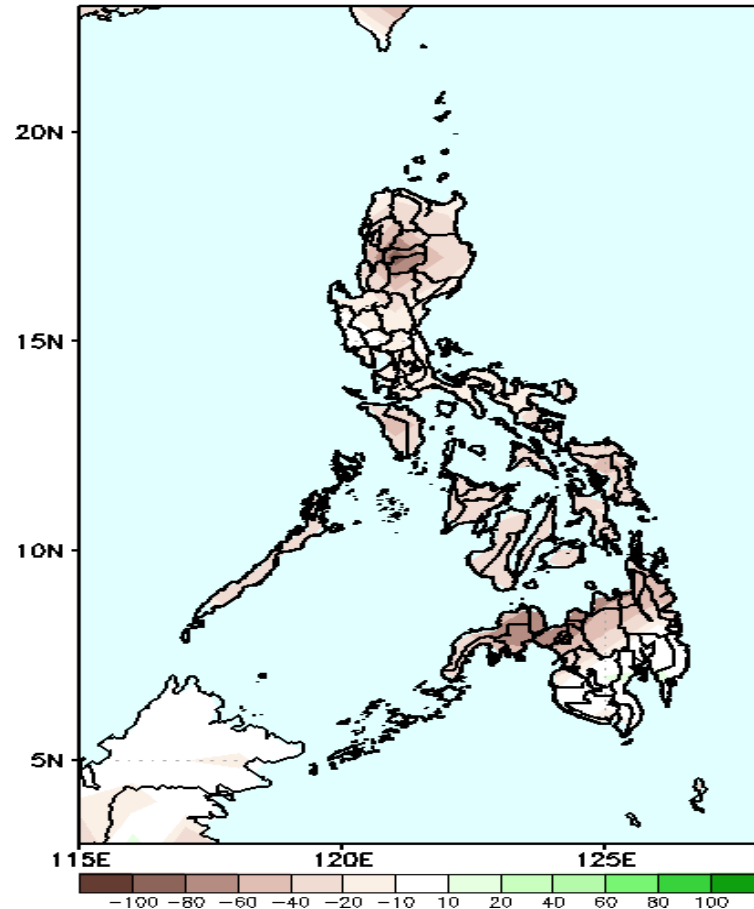


Upper and low level Divergence suggest less likelihood of precipitation in most parts of the country. Easterlies affecting most parts of the country during the forecast period.

# Precipitation Anomaly and Exceedance Probability > 25/50 mm

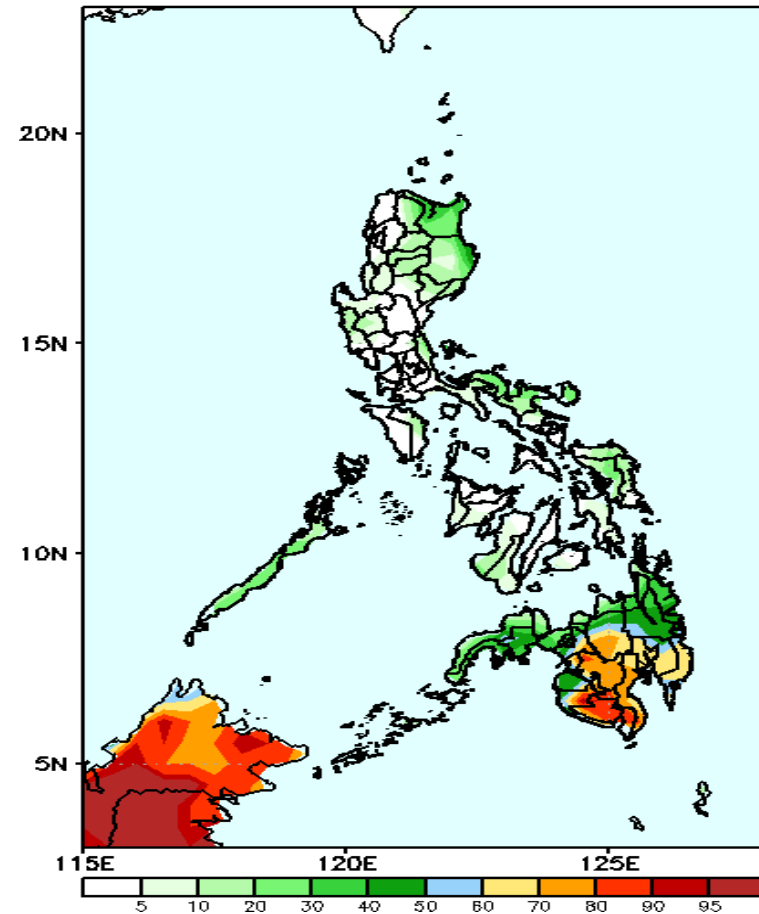
## Week 1: April 05-11, 2021

GEFS Week-1 Precip Anomaly  
Valid: 20210405 - 20210411



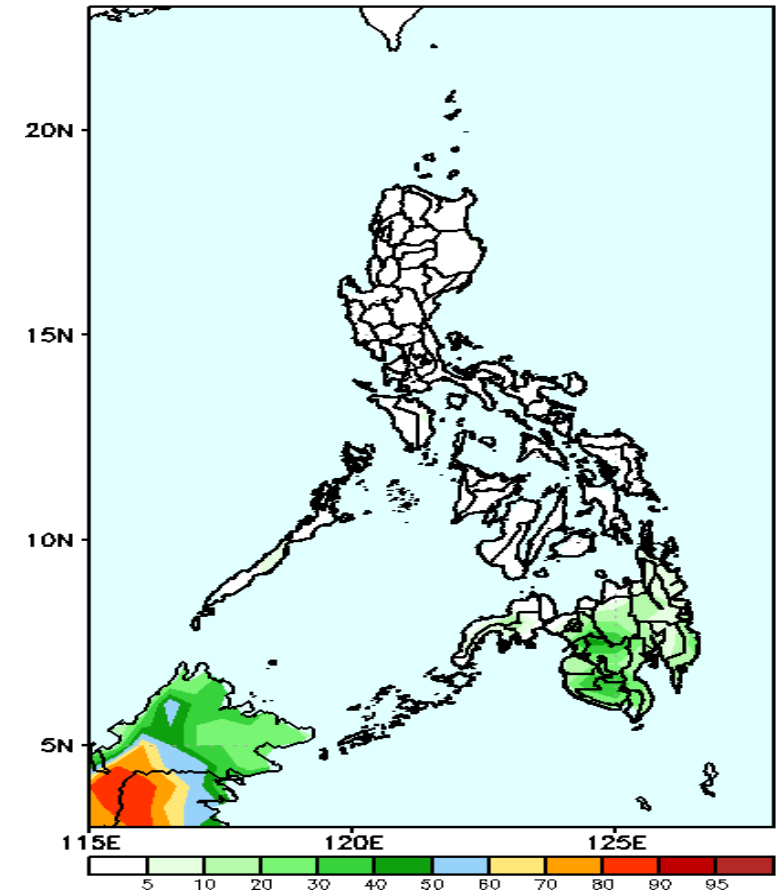
Rainfall deficit of up to 40-80mm is expected in most parts of the country during the forecast period.

GEFS Week-1 Exceedance Prob. > 25mm  
Valid: 20210405 - 20210411



Less probability of rainfall to exceed 25mm in most parts of the country except Central Mindanao, SOCCSKSARGEN and Davao region which will likely received 25mm of rainfall during the forecast period.

GEFS Week-1 Exceedance Prob. > 50mm  
Valid: 20210405 - 20210411

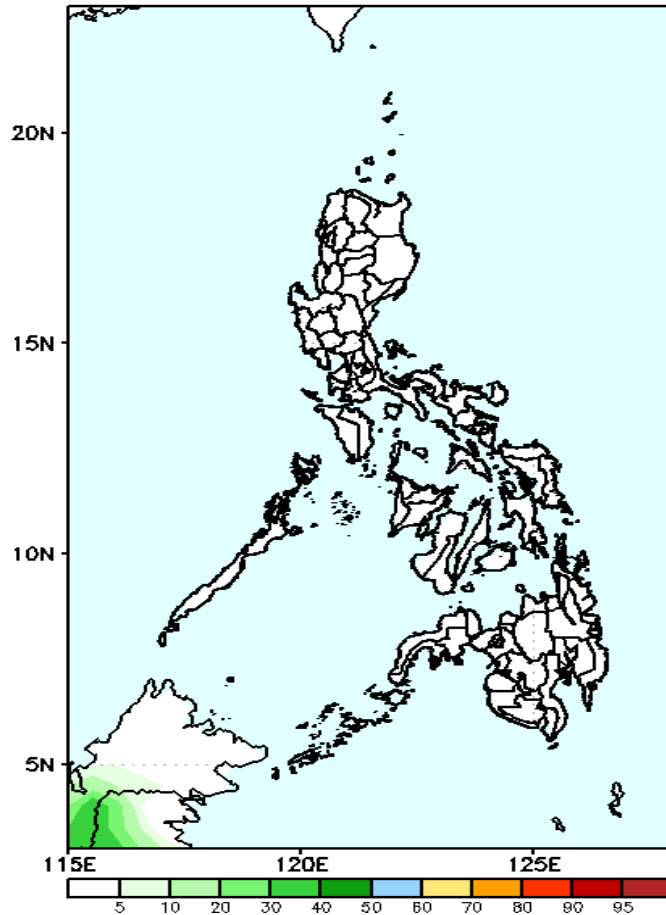


Less probability of rainfall to exceed 50mm in most parts of the country during the forecast period.

# Exceedance Probability > 100/150/200 mm

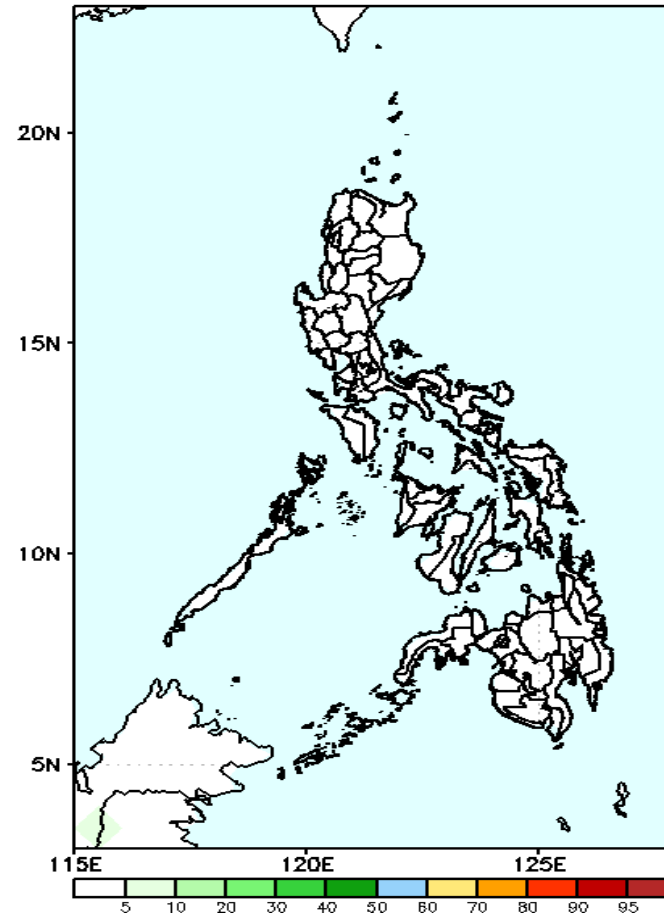
## Week 1: April 05-11, 2021

GEFS Week-1 Exceedance Prob. > 100mm  
Valid: 20210405 – 20210411



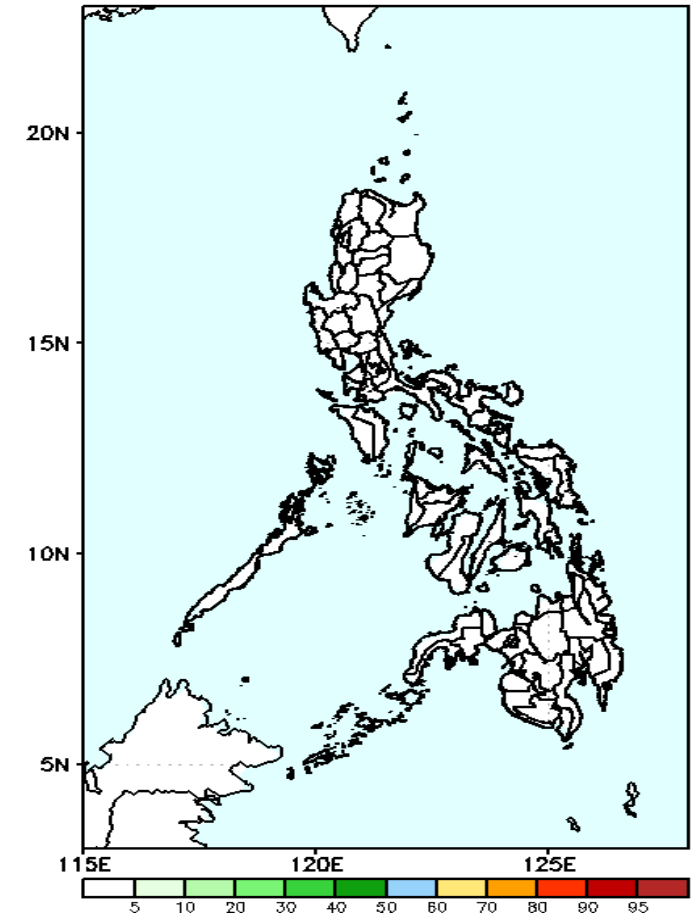
Less probability of rainfall to exceed 100mm in most parts of the country during the forecast period.

GEFS Week-1 Exceedance Prob. > 150mm  
Valid: 20210405 – 20210411



Less probability of rainfall to exceed 150mm in most parts of the country during the forecast period.

GEFS Week-1 Exceedance Prob. > 200mm  
Valid: 20210405 – 20210411

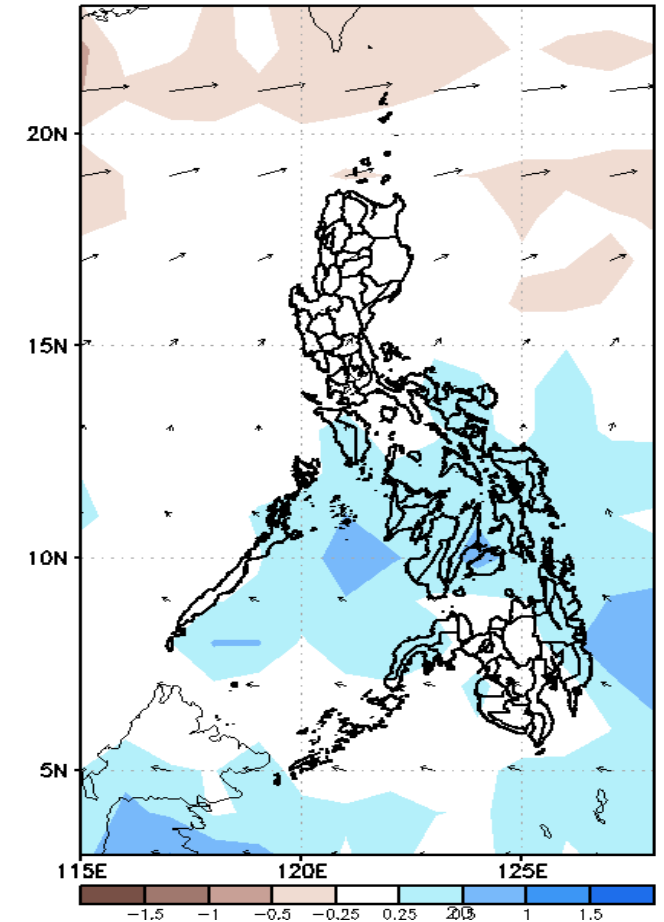
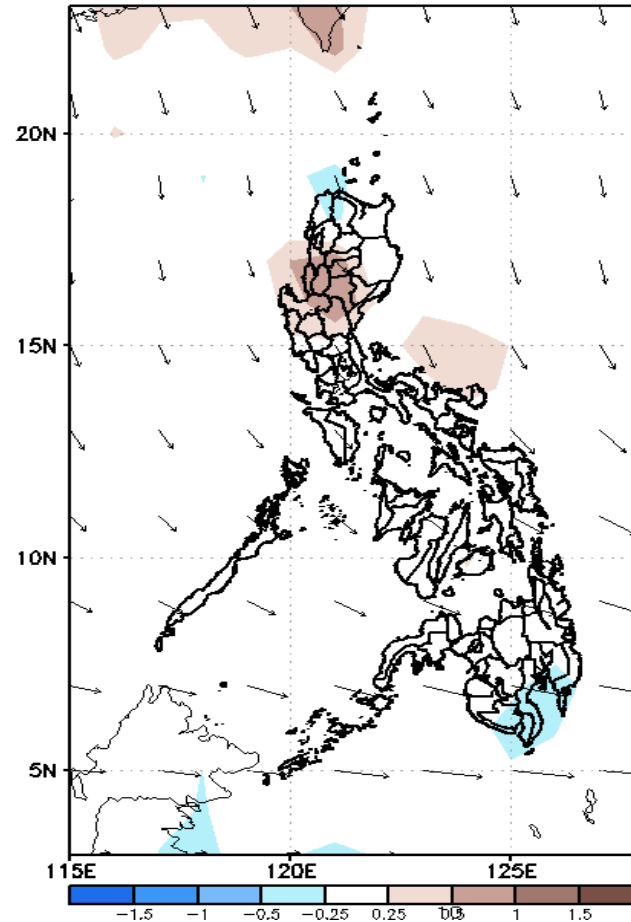
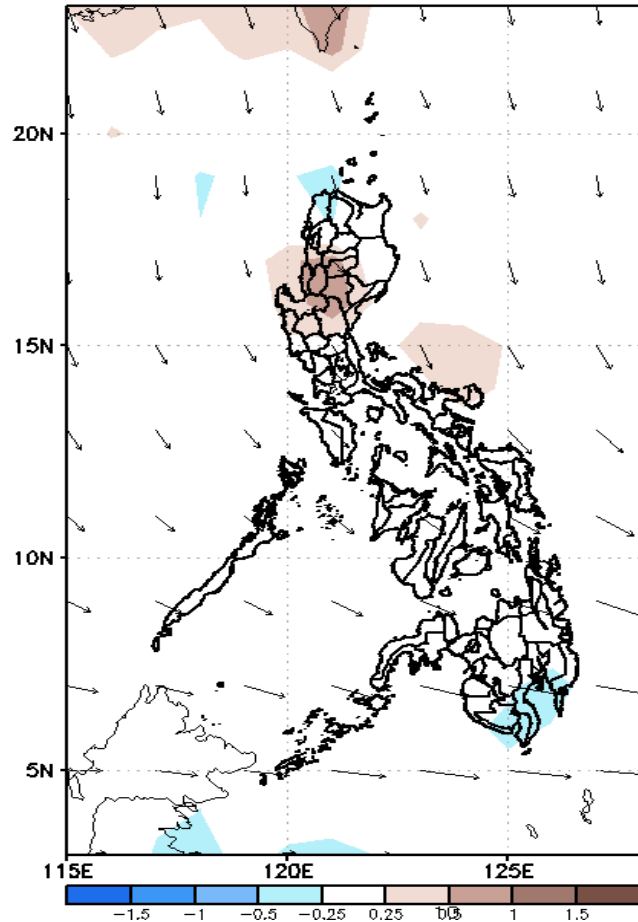


Less probability of rainfall to exceed 200mm in most parts of the country during the forecast period.

# GEFS Week-2 Forecasts: Divergence & Wind Anomaly

**Week 2: April 12-18, 2021**

GEFS Week-2 850-hPa Divergence and Wind Anom  
Valid: 20210412 - 20210418

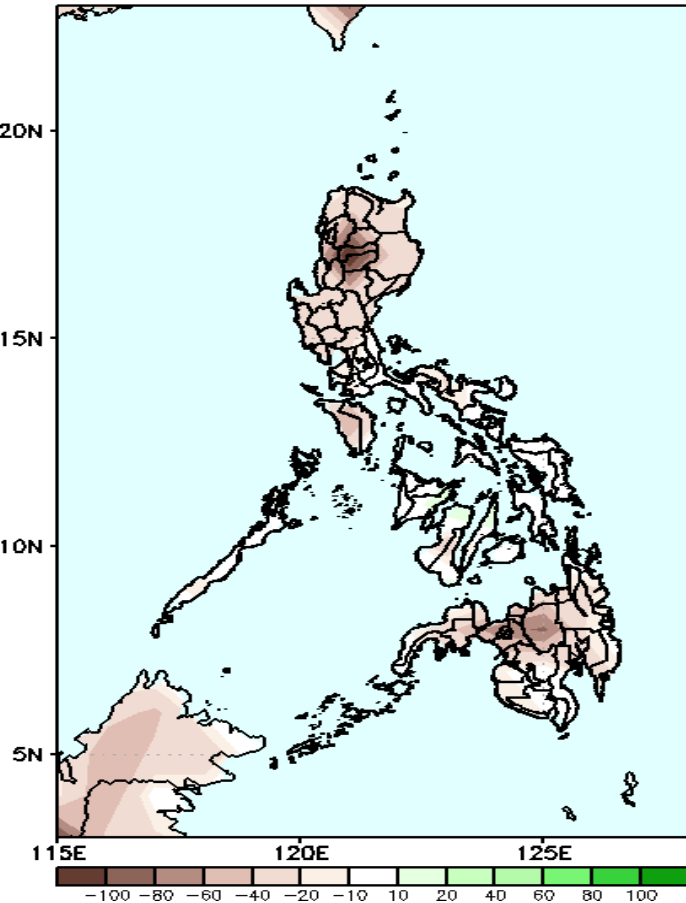


Upper and low level Divergence suggest a likelihood of precipitation in most parts of MIMAROPA and most parts of Visayas and Mindanao. Easterlies affecting most parts of the country during the forecast period.

# Precipitation Anomaly and Exceedance Probability > 25/50 mm

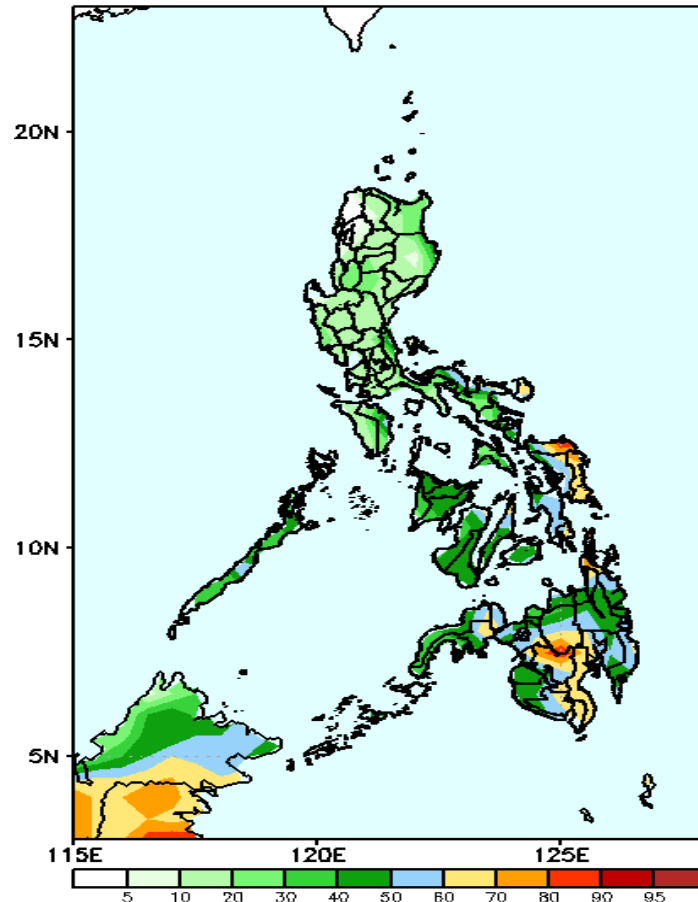
## Week 2: April 12-18, 2021

GEFS Week-2 Precip. Anomaly  
Valid: 20210412 - 20210418



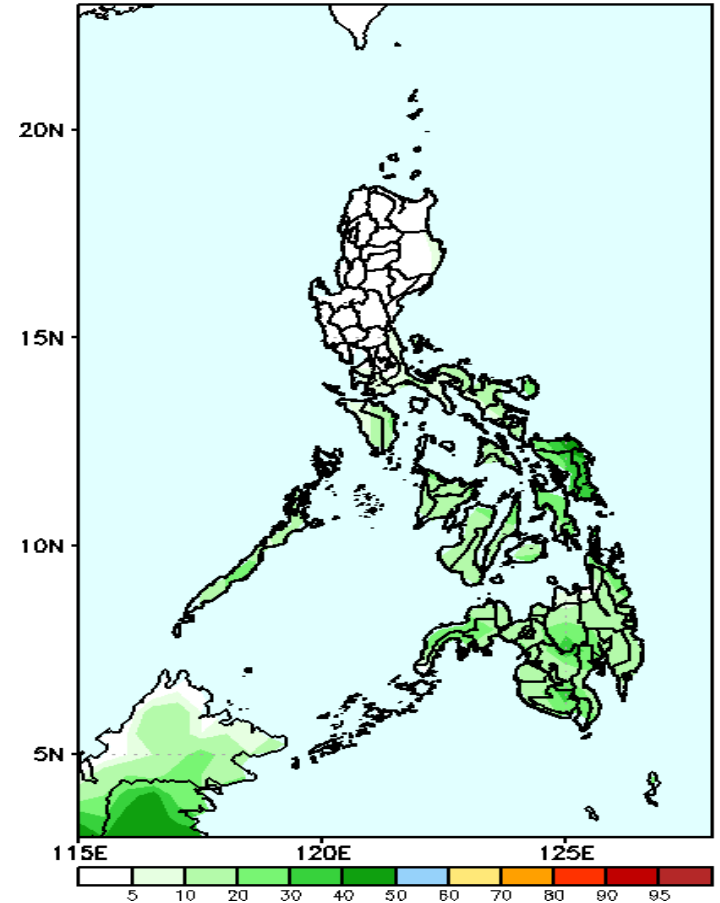
Rainfall deficit of up to 40-80mm is expected in most parts of the country during the forecast period.

GEFS Week-2 Exceedance Prob. > 25mm  
Valid: 20210412 - 20210418



Less probability of rainfall to exceed 25mm in most parts of the country except Northern and Eastern Samar, Cotabato, Davao del Sur, Davao Occidental and Sarangani which will likely received 25mm of rainfall during the forecast period.

GEFS Week-2 Exceedance Prob. > 50mm  
Valid: 20210412 - 20210418



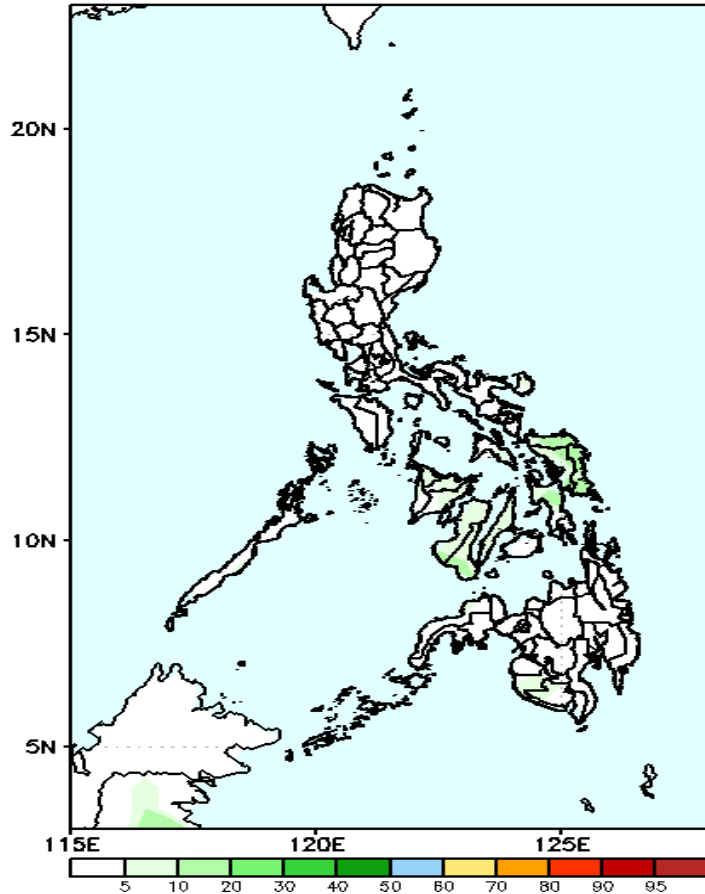
Less probability of rainfall to exceed 50mm in most parts of the country during the forecast



# Exceedance Probability > 100/150/200 mm

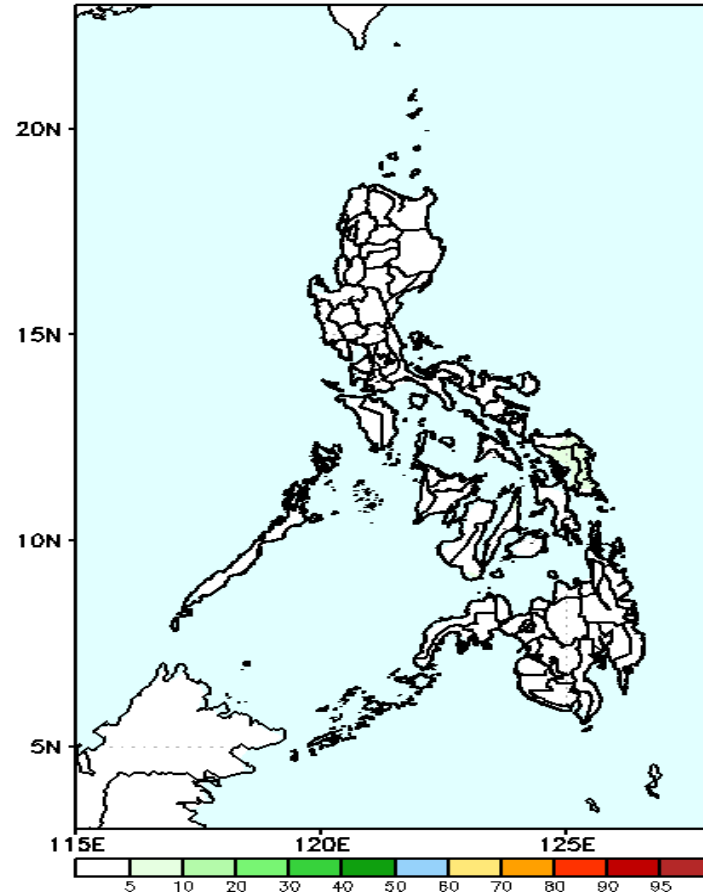
Week 2: April 12-18, 2021

GEFS Week-2 Exceedance Prob. > 100mm  
Valid: 20210412 - 20210418



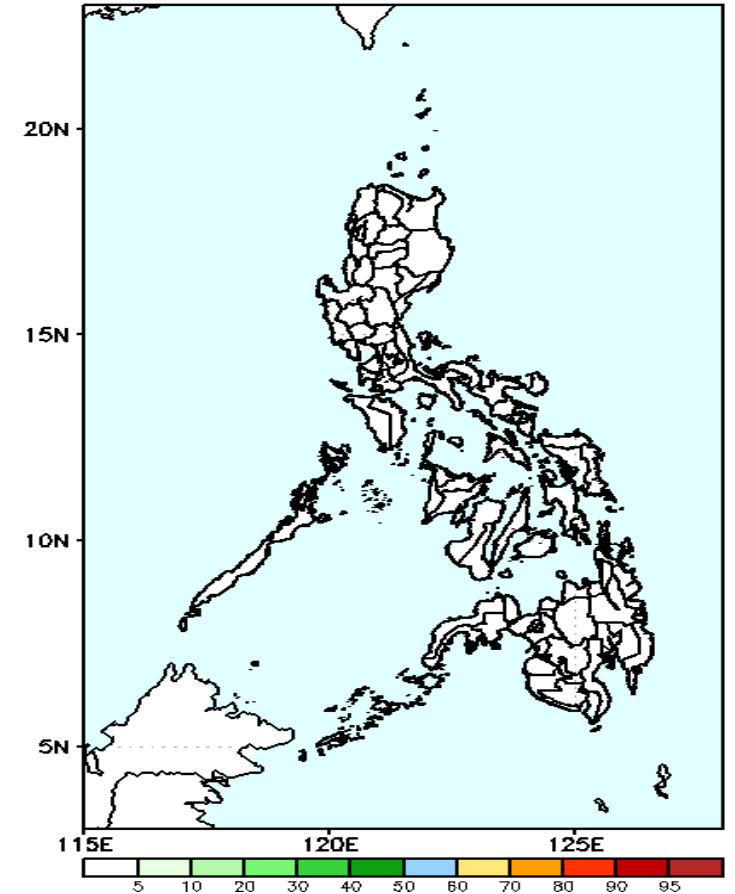
Less probability of rainfall to exceed 100mm in most parts of the country during the forecast period.

GEFS Week-2 Exceedance Prob. > 150mm  
Valid: 20210412 - 20210418



Less probability of rainfall to exceed 150mm in most parts of the country during the forecast period.

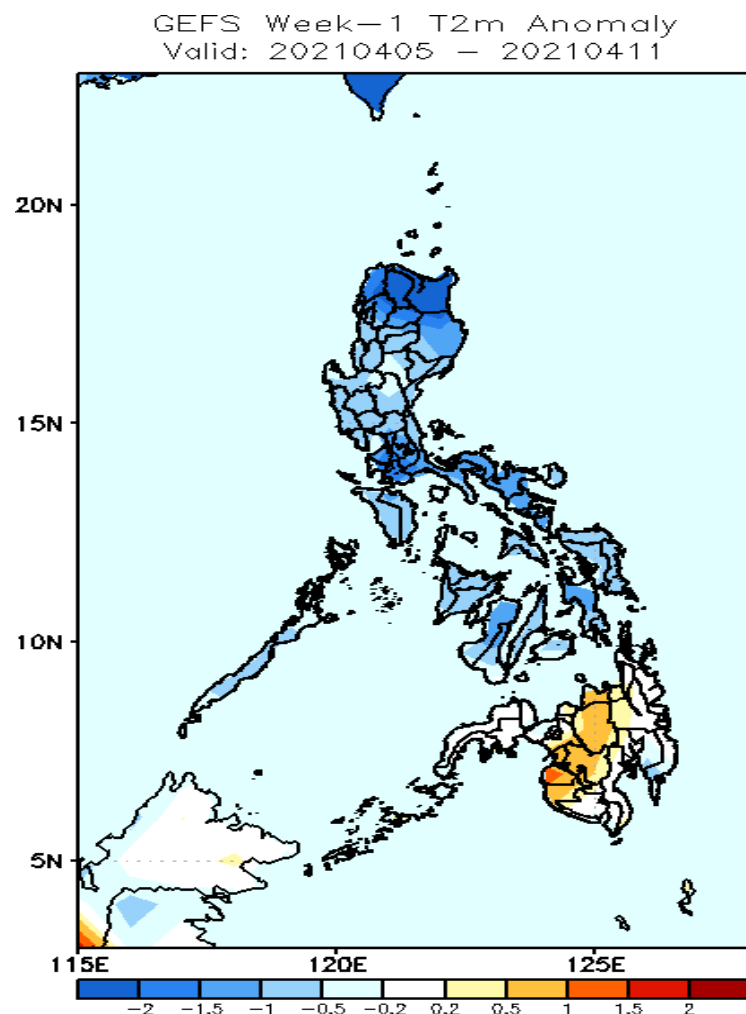
GEFS Week-2 Exceedance Prob. > 200mm  
Valid: 20210412 - 20210418



Less probability of rainfall to exceed 200mm in most parts of the country during the forecast period.

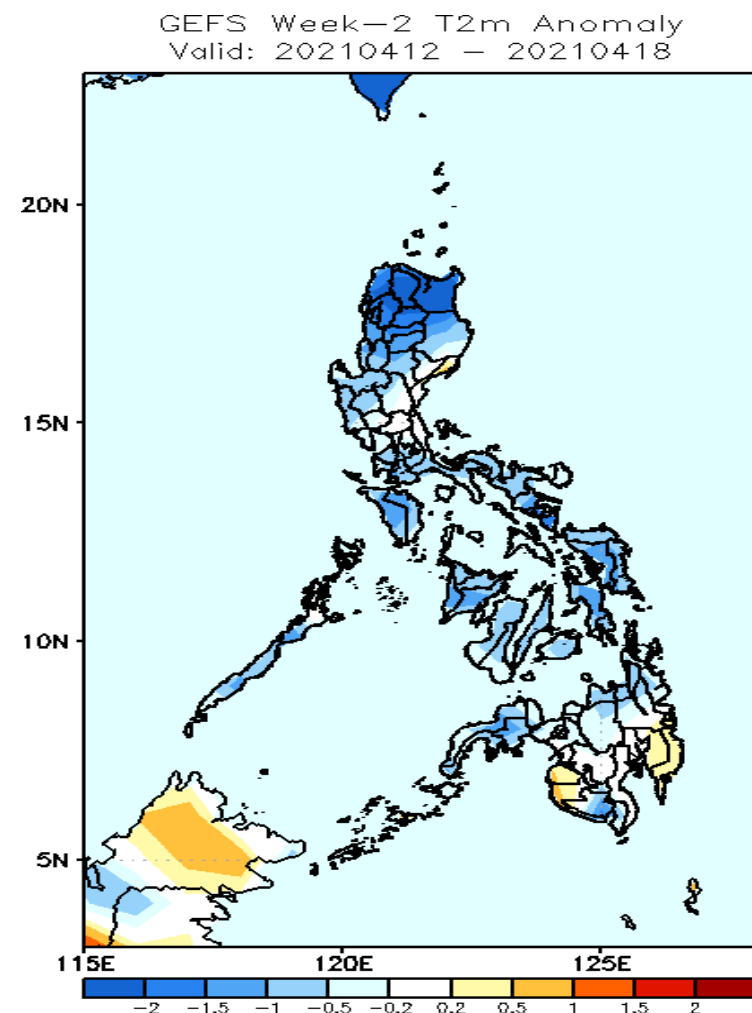


# GEFS Week-1 & 2 Forecasts: T2m Anomaly



## 2m Temperature Week 1: April 05-11, 2021

Slightly cooler to cooler than average surface air temperature will likely experience in most parts of Luzon and Visayas while average to slightly warmer temperature in Mindanao during the forecast period.



## 2m Temperature Week 2: April 12-18, 2021

Slightly cooler to cooler than average surface air temperature will likely experience in most parts of the country except with some patches of Average to slightly warmer temperature in southern Mindanao during the forecast period.