



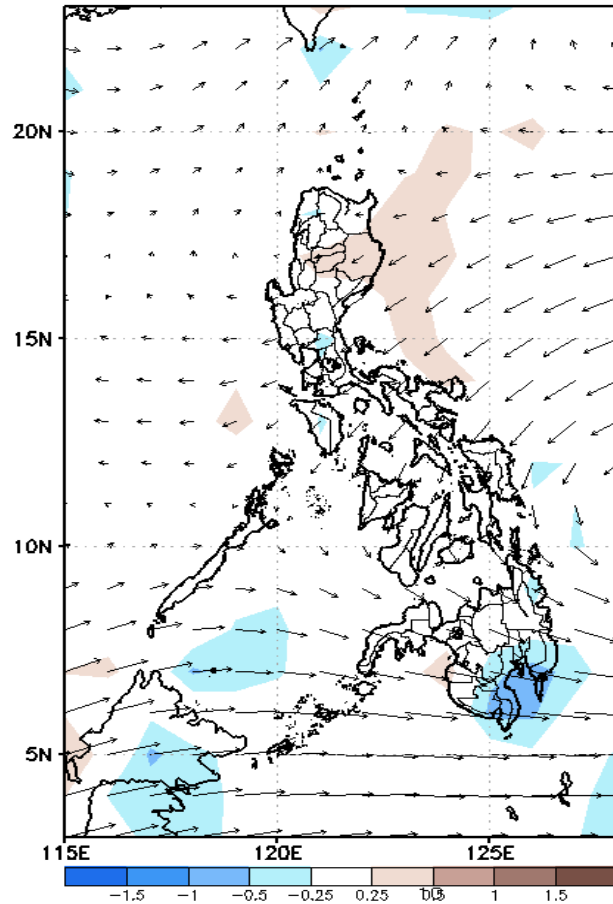
Week 1 & Week 2 Forecast for the Philippines using GEFS Model



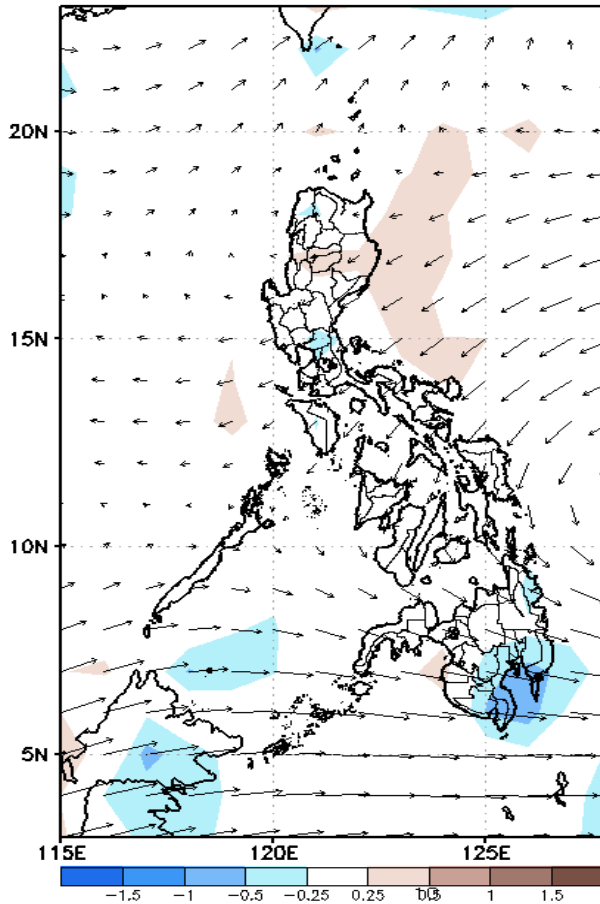
GEFS Week-1 Forecasts: Divergence & Wind Anomaly

Week 1: Apr 06-12, 2022

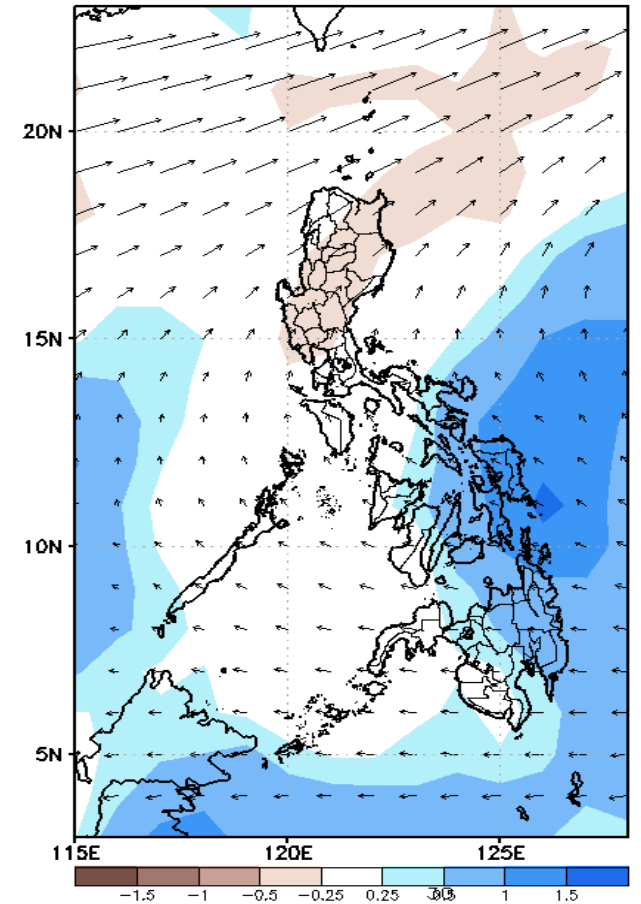
GEFS Week-1 850-hPa Divergence and Wind Anom
Valid: 20220406 - 20220412



GEFS Week-1 700-hPa Divergence and Wind Anom
Valid: 20220406 - 20220412



GEFS Week-1 200-hPa Divergence and Wind Anom
Valid: 20220406 - 20220412

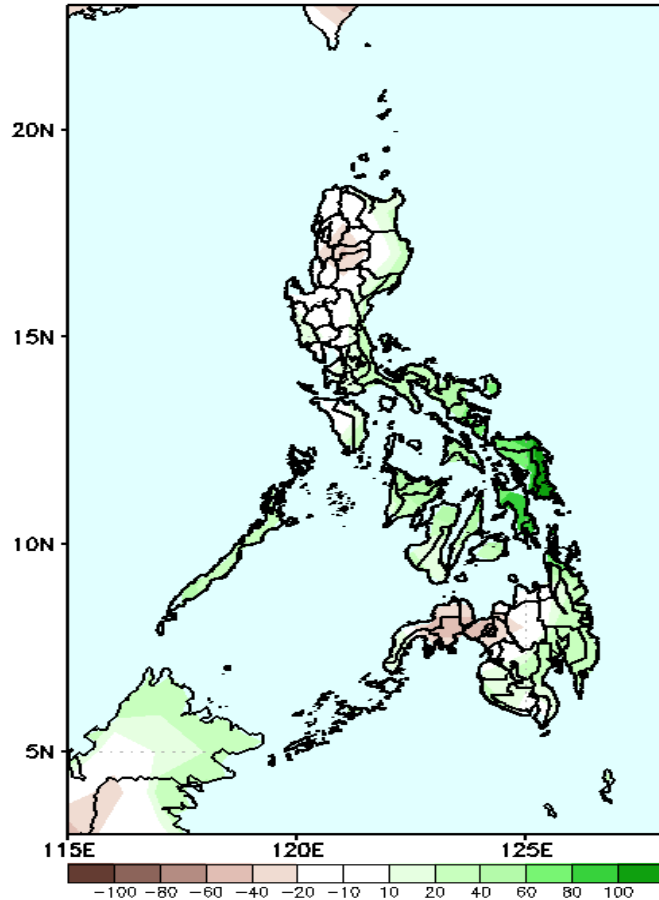


Upper and low level Divergence suggest a likelihood of light to moderate precipitation in Bicol region and most parts of Visayas and Mindanao. Easterlies affecting most parts of the country attributing to warmer temperatures during the forecast period.

Precipitation Anomaly and Exceedance Probability > 25/50 mm

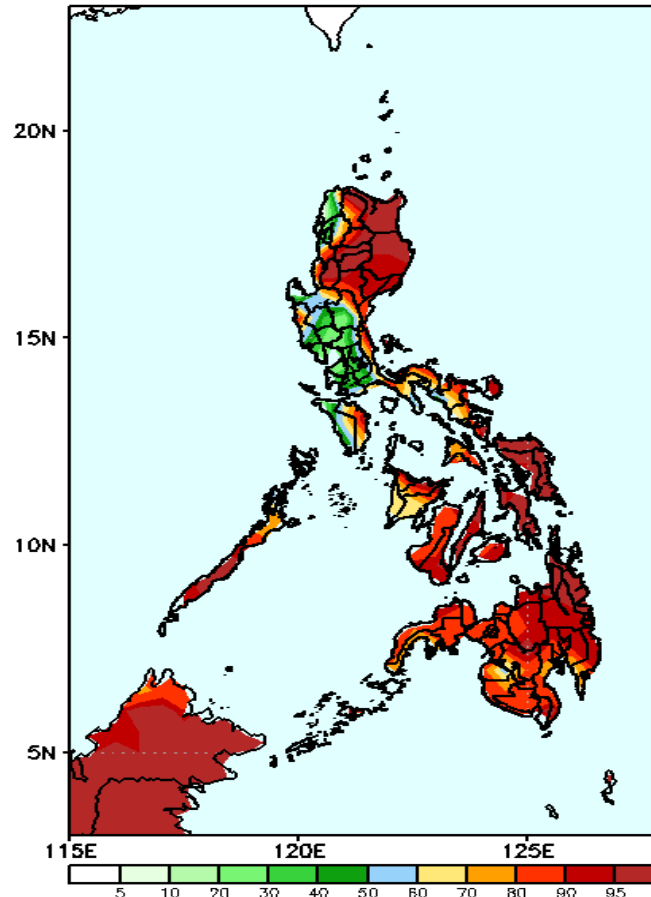
Week 1: Apr 06-12, 2022

GEFS Week-1 Precip Anomaly
Valid: 20220406 – 20220412



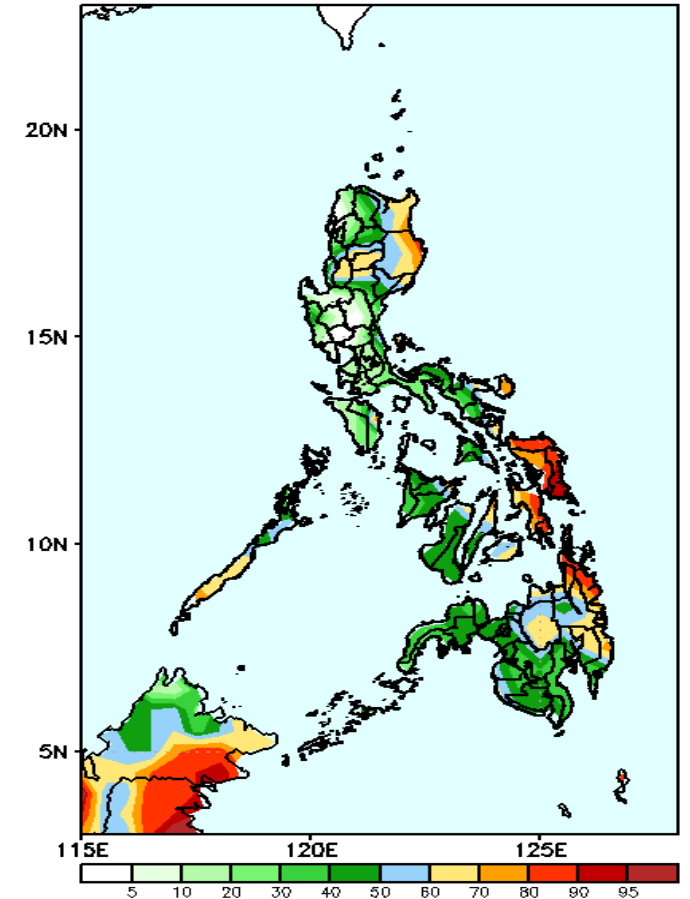
Increase of rainfall of 20-70mm in eastern Luzon, Bicol Region, most parts of Visayas & eastern Mindanao and more than 100mm in Eastern Visayas while 20-60mm rainfall deficit in Cordillera Region, Lanao provinces and Zamboanga Peninsula during the forecast period.

GEFS Week-1 Exceedance Prob. > 25mm
Valid: 20220406 – 20220412



High probability of rainfall to exceed 25mm in most parts of the country except in Pangasinan and most areas of Central Luzon and CALABAR during the forecast period.

GEFS Week-1 Exceedance Prob. > 50mm
Valid: 20220406 – 20220412



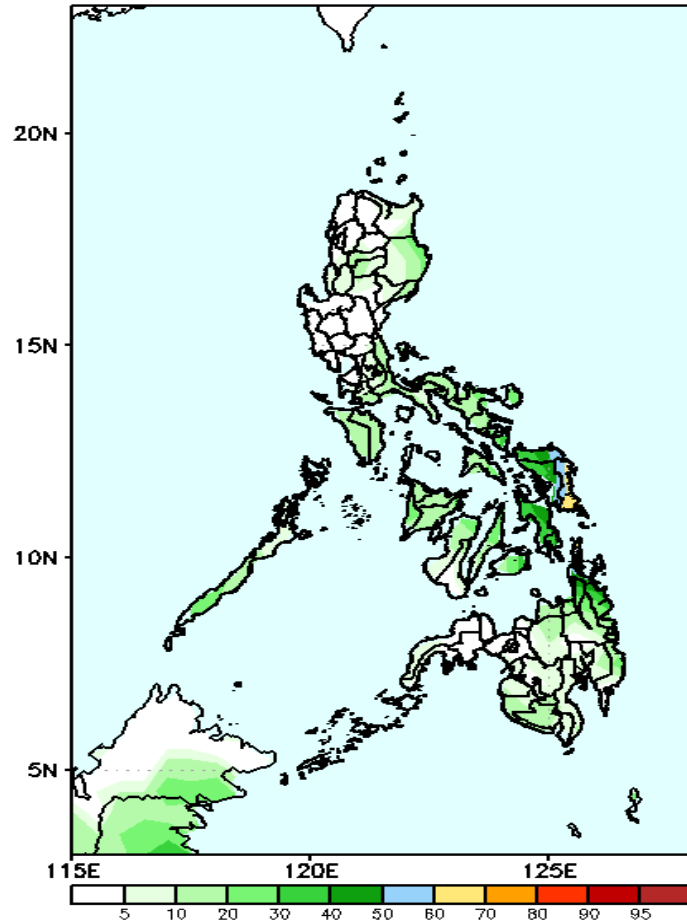
High probability of rainfall to exceed 50mm Eastern Visayas and CARAGA Region while less likely for the rest of the country during the forecast period.



Exceedance Probability > 100/150/200 mm

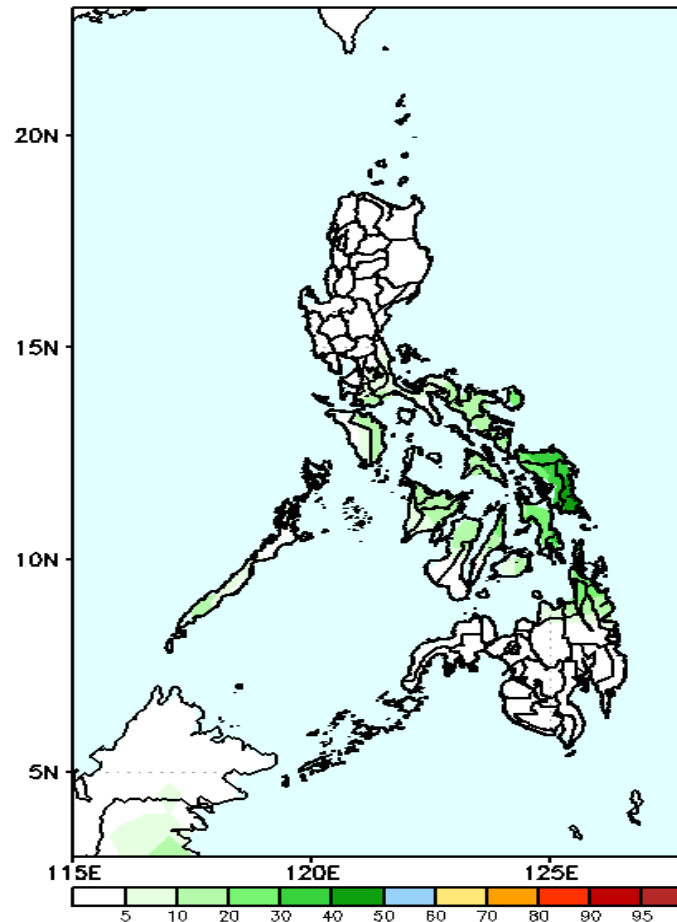
Week 1: Apr 06-12, 2022

GEFS Week-1 Exceedance Prob. > 100r
Valid: 20220406 – 20220412



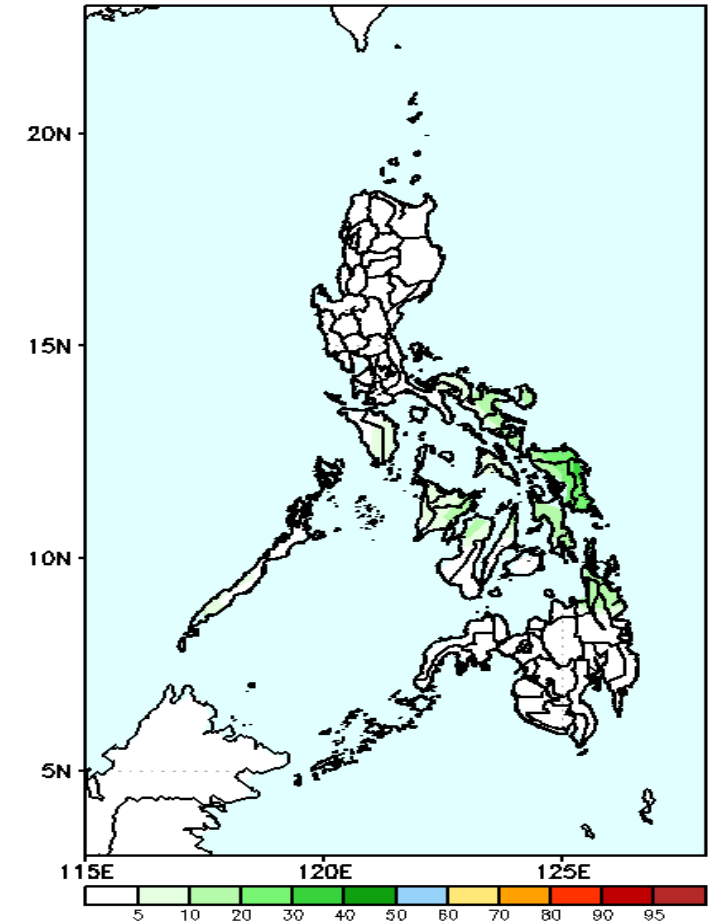
Low probability of rainfall to exceed 100mm in most parts of the country during the forecast period.

GEFS Week-1 Exceedance Prob. > 150mm
Valid: 20220406 – 20220412



Low probability of rainfall to exceed 150mm in most parts of the country during the forecast period.

GEFS Week-1 Exceedance Prob. > 200mm
Valid: 20220406 – 20220412



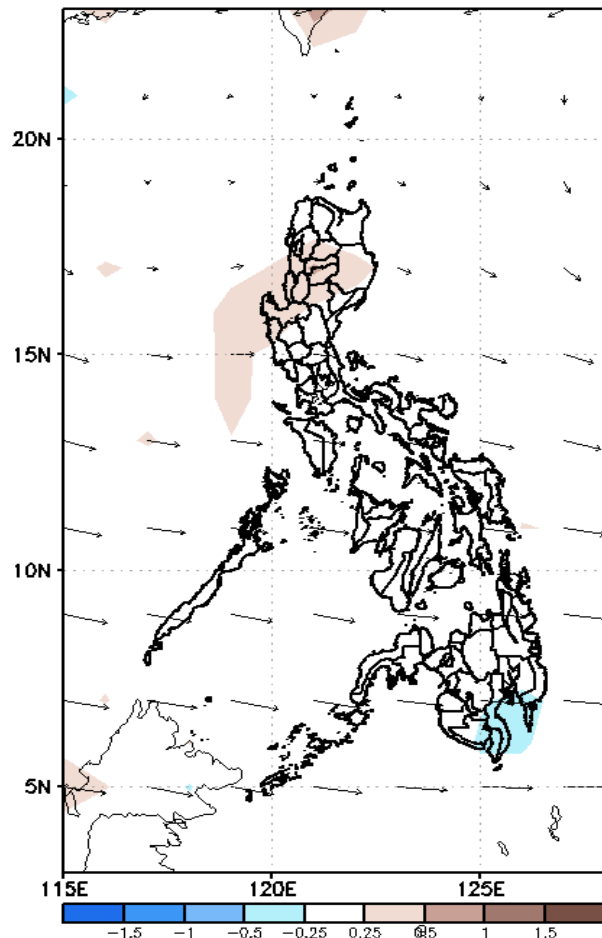
Low probability of rainfall to exceed 200mm in most parts of the country during the forecast period.



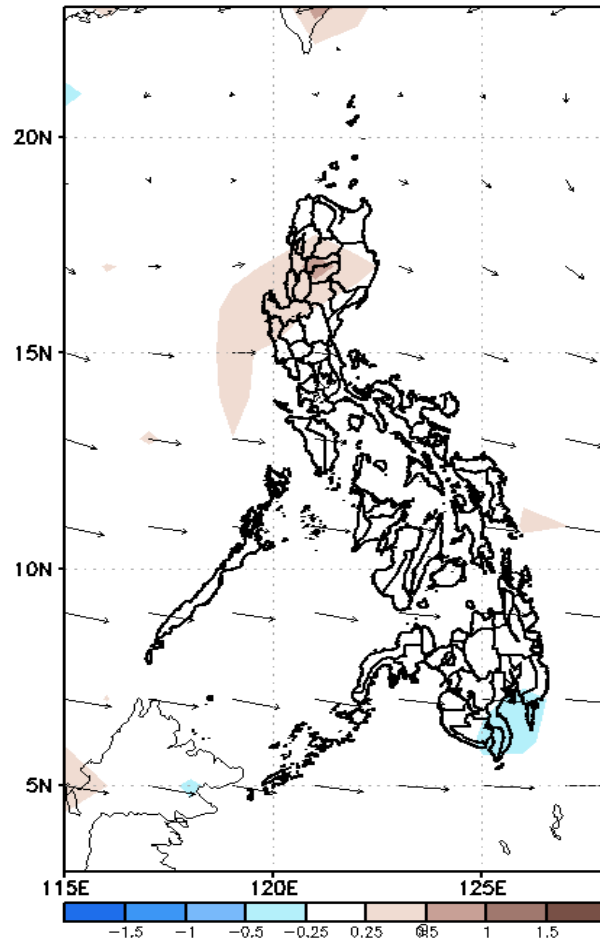
GEFS Week-2 Forecasts: Divergence & Wind Anomaly

Week 2: Apr 13-19, 2022

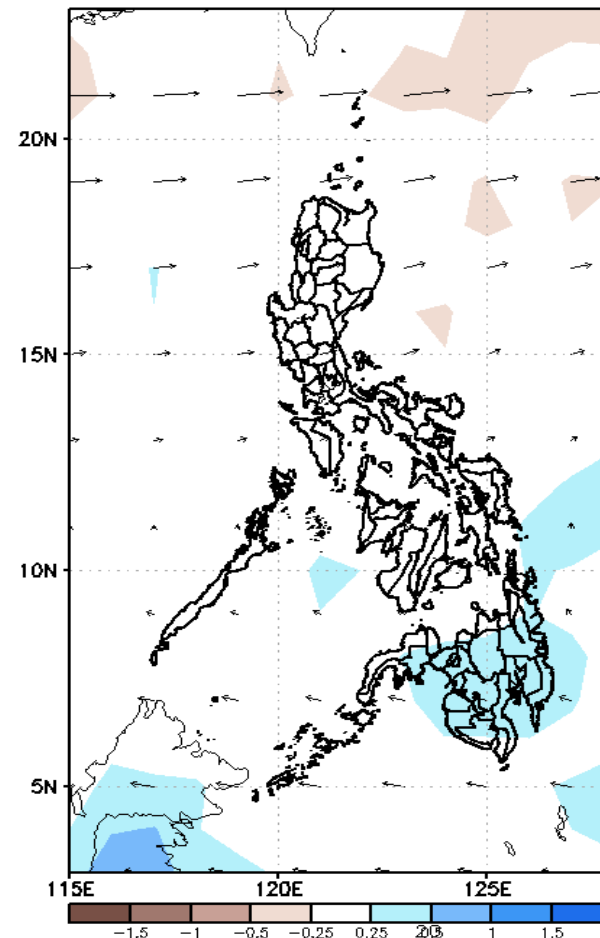
GEFS Week-2 850-hPa Divergence and Wind Anom
Valid: 20220413 - 20220419



GEFS Week-2 700-hPa Divergence and Wind Anom
Valid: 20220413 - 20220419



GEFS week-2 200-hPa Divergence and Wind Anom
Valid: 20220413 - 20220419

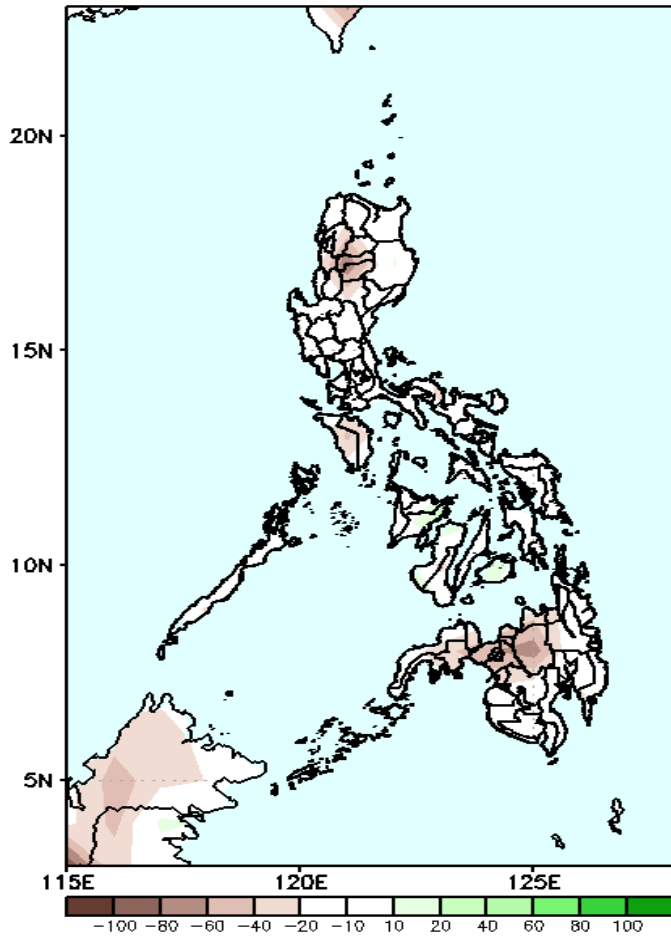


Upper and low level Divergence suggest a likelihood precipitation in most parts of Mindanao due to localized thunderstorms . Easterlies affecting most parts of the country attributing to warmer temperatures during the forecast period.

Precipitation Anomaly and Exceedance Probability > 25/50 mm

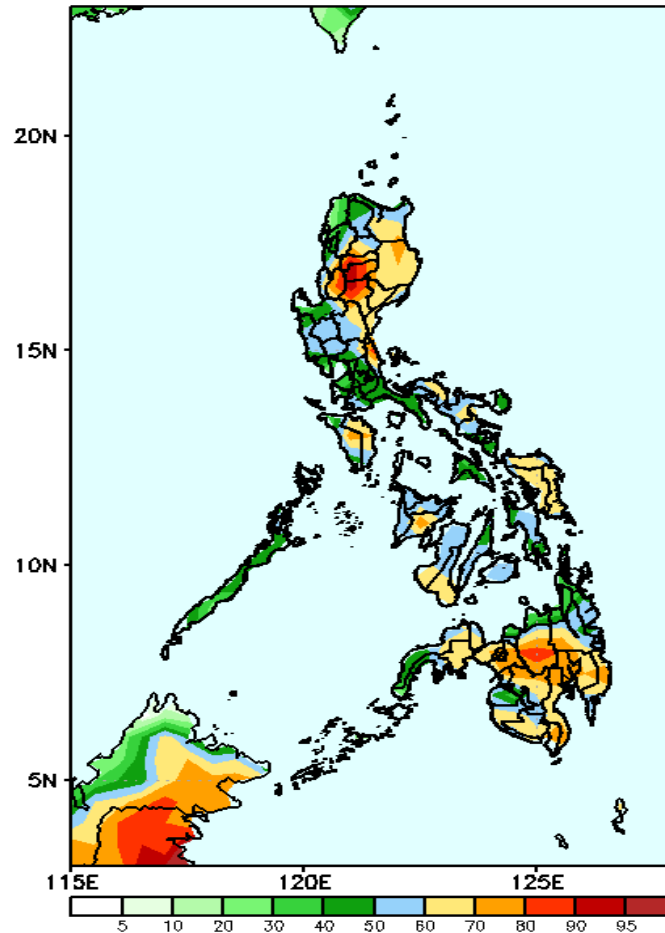
Week 2: Apr 13-19, 2022

GEFS Week-2 Precip Anomaly
Valid: 20220413 - 20220419



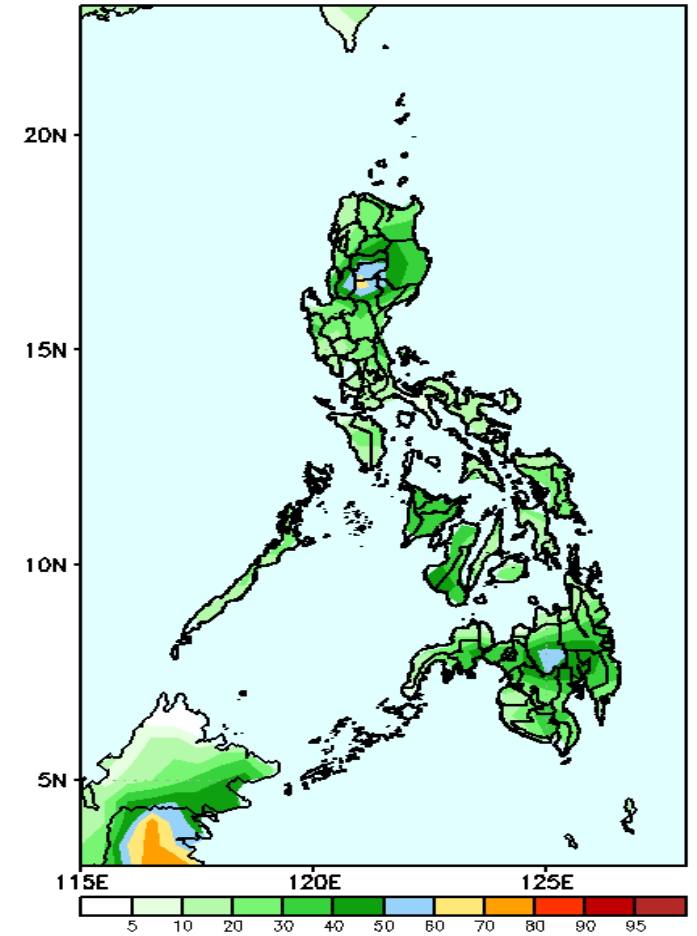
Rainfall deficit of 30-70mm in Cordillera Region, Mindoro and Northern Mindanao during the forecast period.

GEFS Week-2 Exceedance Prob. > 25mm
Valid: 20220413 - 20220419



High probability of rainfall to exceed 25mm in most parts of Cordillera Region, Aurora and Bukidnon while 50-80% chance for the rest of the country during the forecast period.

GEFS Week-2 Exceedance Prob. > 50mm
Valid: 20220413 - 20220419

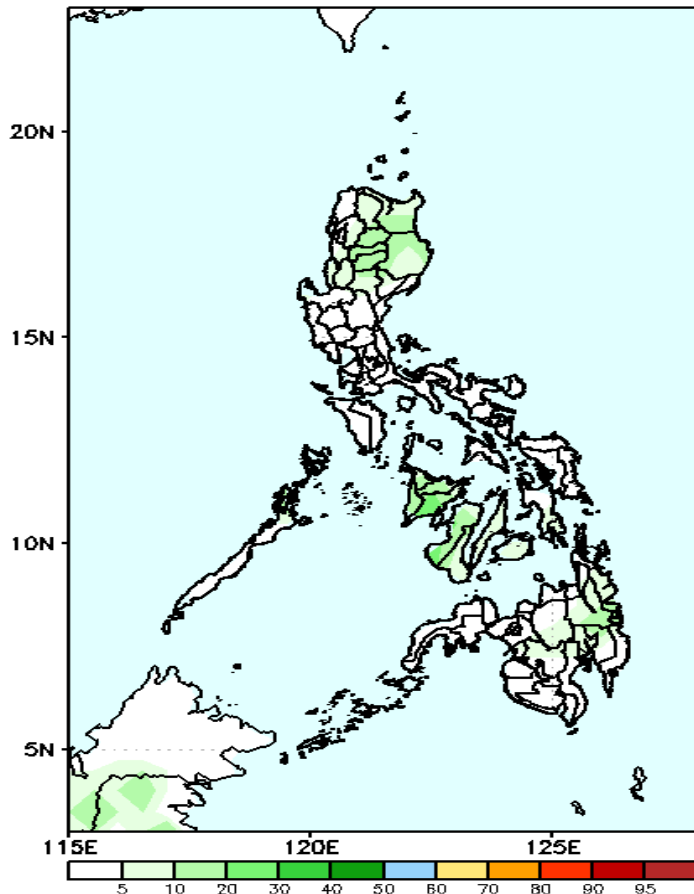


Low probability of rainfall to exceed 50mm in most parts of the country during the forecast period.

Exceedance Probability > 100/150/200 mm

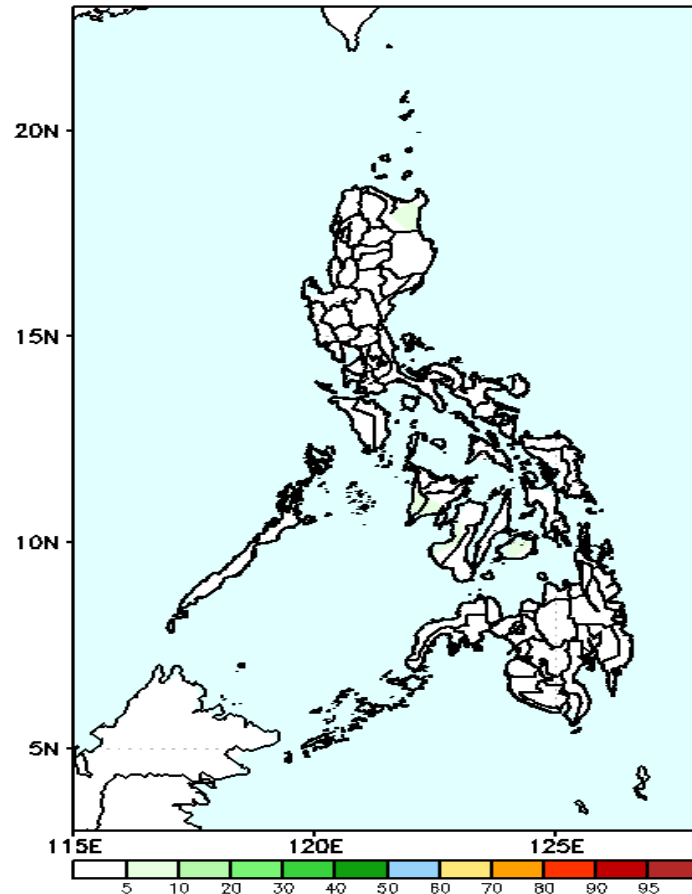
Week 2: Apr 13-19, 2022

GEFS Week-2 Exceedance Prob. > 100mm
Valid: 20220413 – 20220419



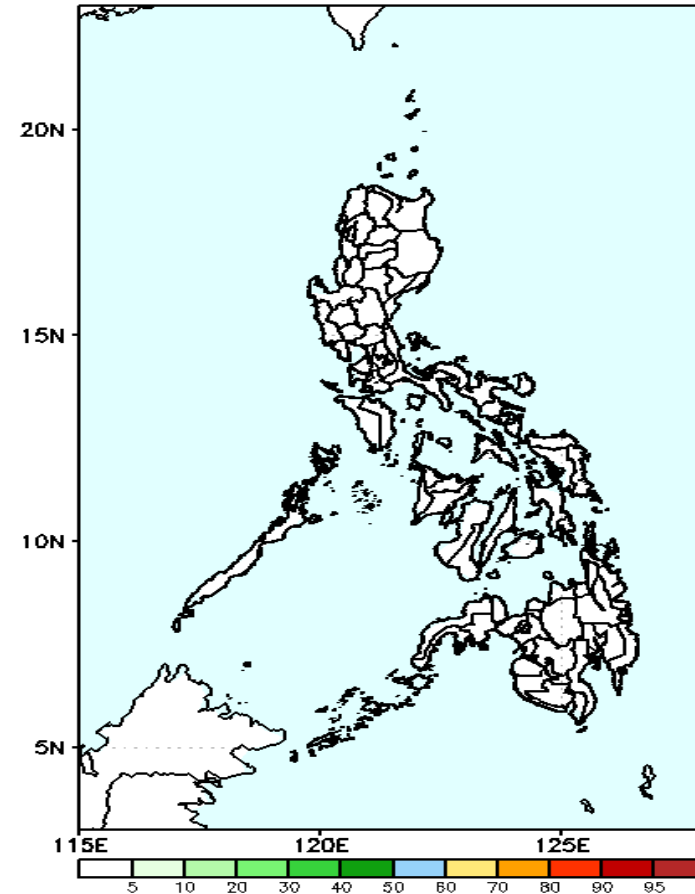
Low probability of rainfall to exceed 100mm in most parts of the country during the forecast period.

GEFS Week-2 Exceedance Prob. > 150mm
Valid: 20220413 – 20220419



Low probability of rainfall to exceed 150mm in most parts of the country during the forecast period.

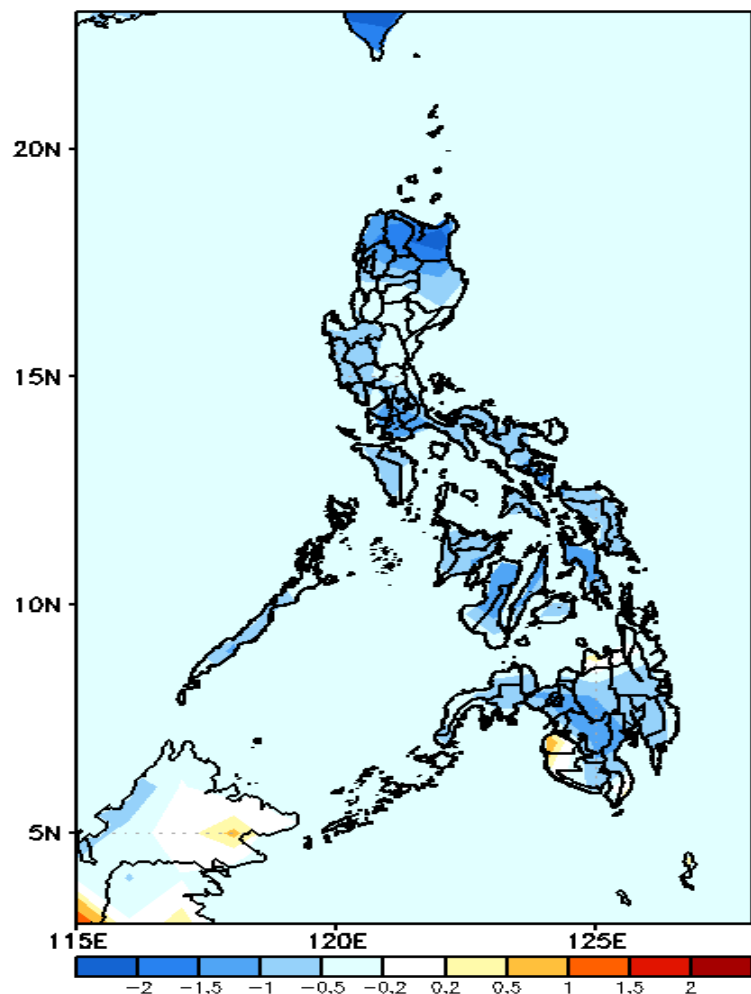
GEFS Week-2 Exceedance Prob. > 200mm
Valid: 20220413 – 20220419



Low probability of rainfall to exceed 200mm in most parts of the country during the forecast period.

GEFS Week-1 & 2 Forecasts: T2m Anomaly

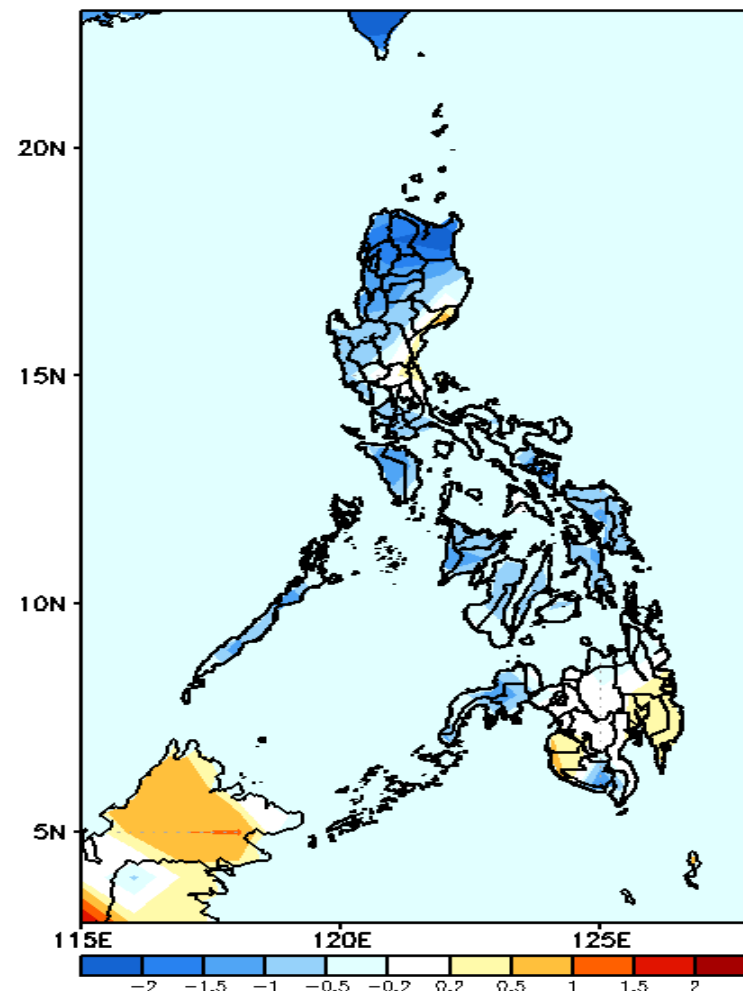
GEFS Week-1 T2m Anomaly
Valid: 20220406 – 20220412



2m Temperature Week 1: Apr 06-12, 2022

Cooler than average surface air temperature will likely experience in most parts of the country during the forecast period.

GEFS Week-2 T2m Anomaly
Valid: 20220413 – 20220419



2m Temperature Week 2: Apr 13-19, 2022

Slightly cooler to cooler than average surface air temperature will likely experience in most parts of Luzon, Visayas, Zamboanga Peninsula and South Cotabato while average to slightly warmer for the rest of Mindanao during the forecast period.