



Week 1 & Week 2 Forecast for the Philippines using GEFS Model



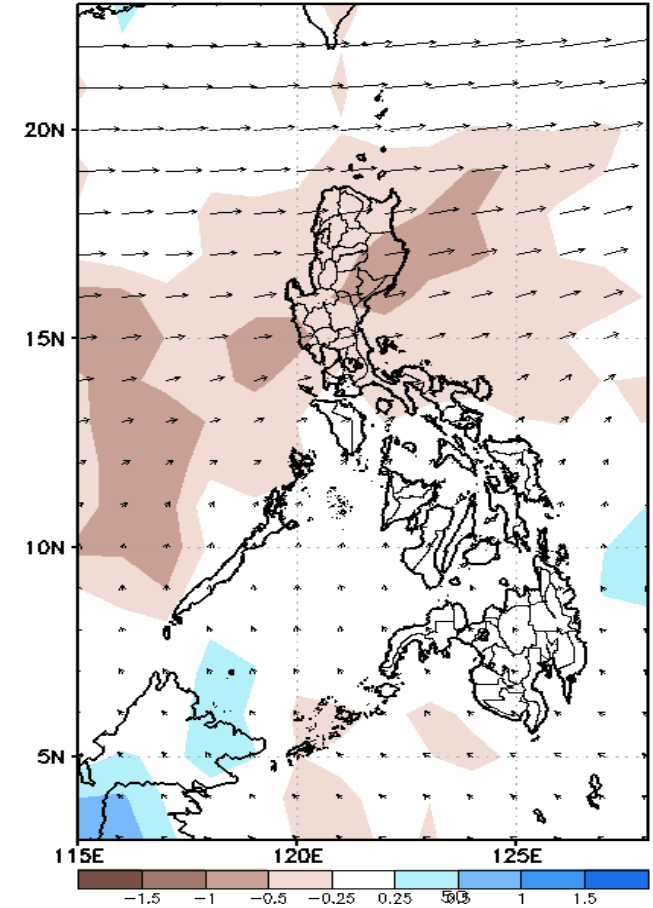
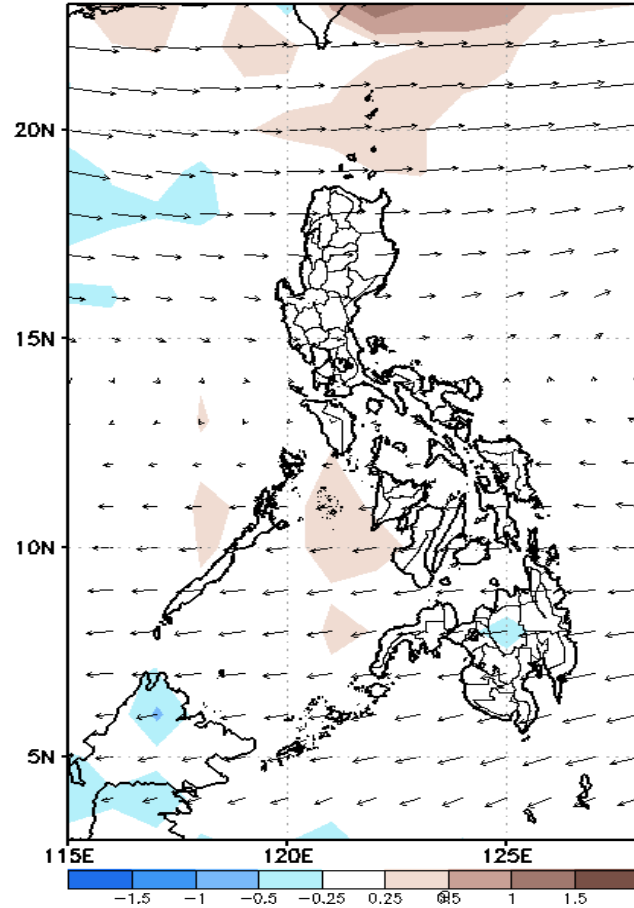
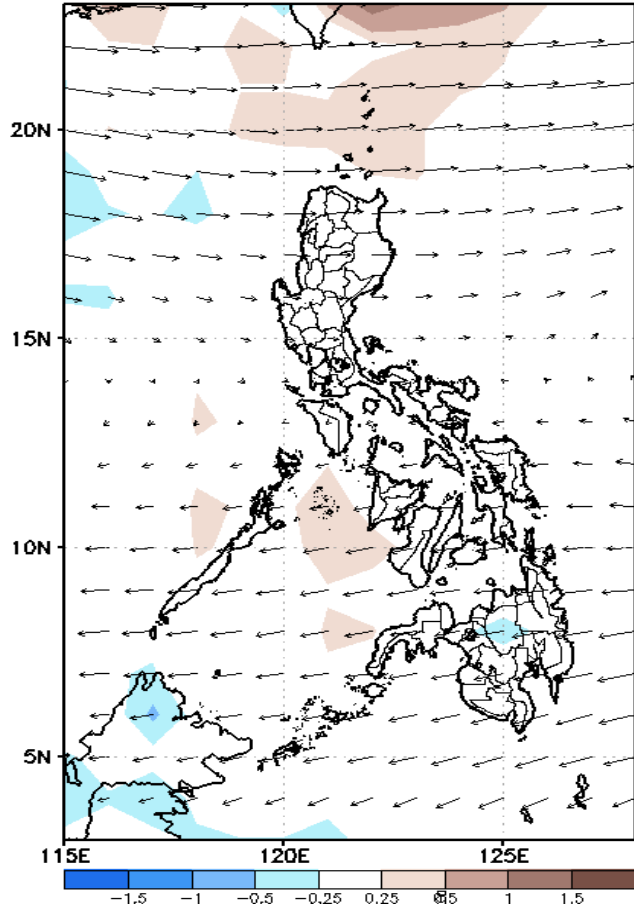
GEFS Week-1 Forecasts: Divergence & Wind Anomaly

Week 1: Jan 06-12, 2021

GEFS Week-1 850-hPa Divergence and Wind Anom
Valid: 20220106 - 20220112

GEFS Week-1 700-hPa Divergence and Wind Anom
Valid: 20220106 - 20220112

GEFS Week-1 200-hPa Divergence and Wind Anom
Valid: 20220106 - 20220112

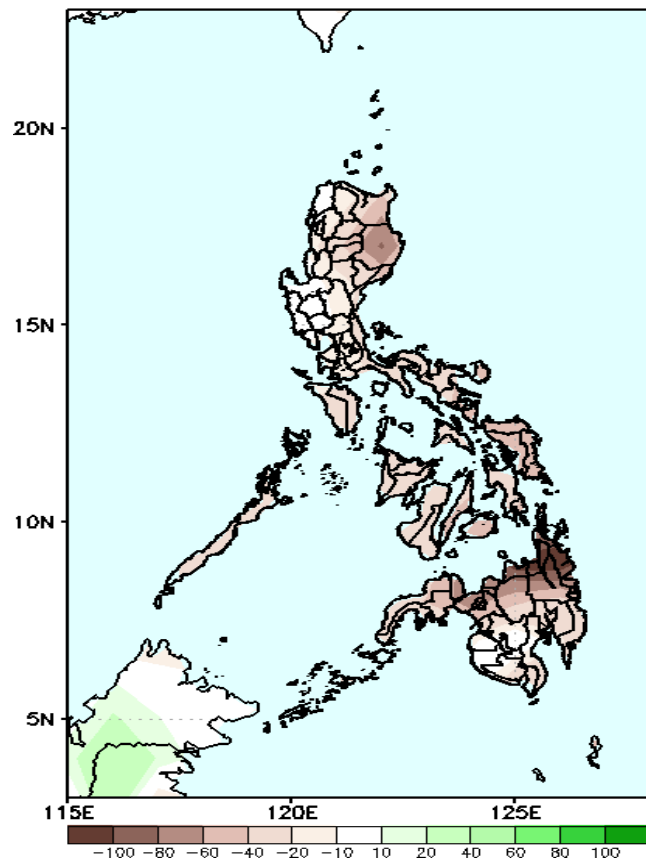


Upper and low level Divergence suggest less likelihood of precipitation in most parts of the country. Northeast Monsoon affecting Extreme Northern Luzon while Easterlies affecting the rest of the country during the forecast period.

Precipitation Anomaly and Exceedance Probability > 25/50 mm

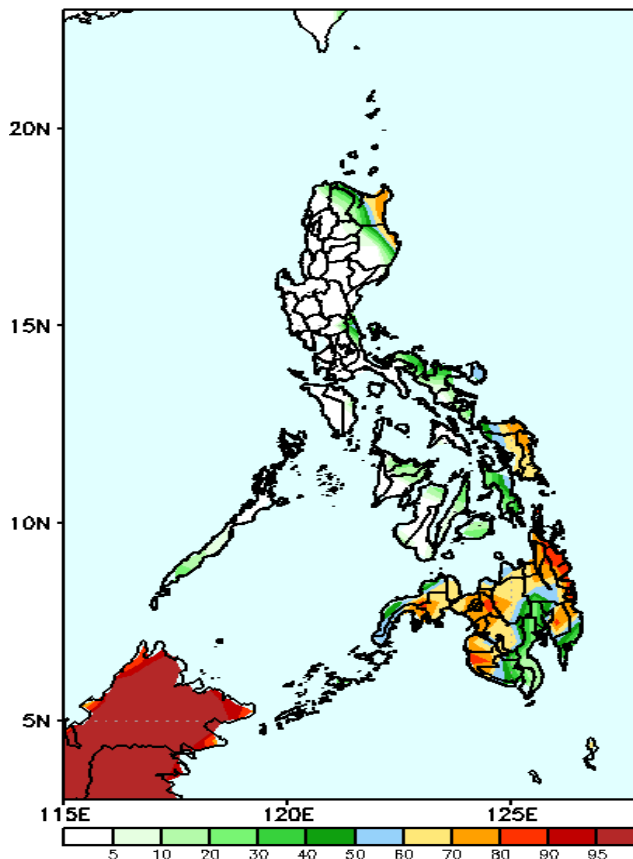
Week 1: Jan 06-12, 2021

GEFS Week-1 Precip Anomaly
Valid: 20220106 - 20220112



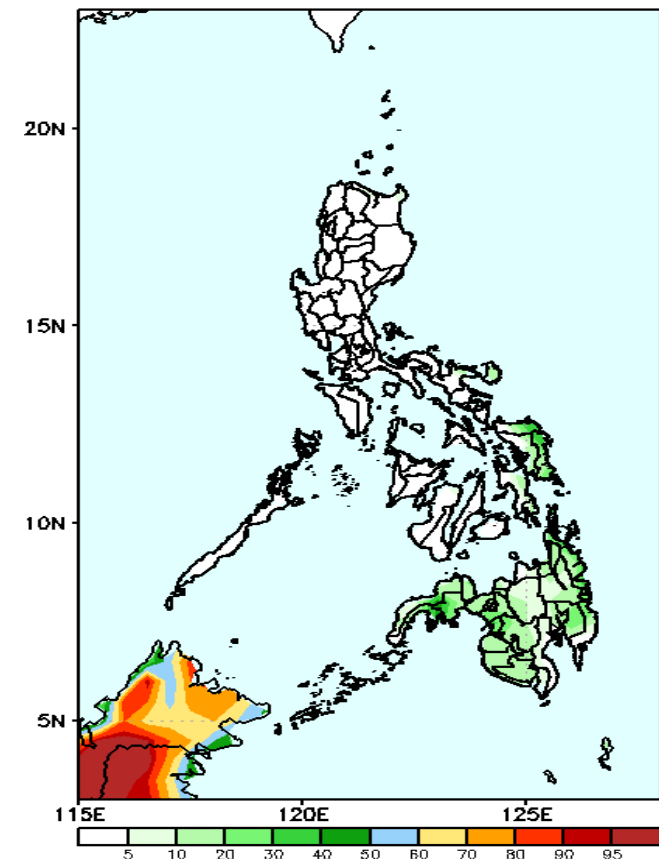
Rainfall deficit of 40-100mm is expected in most parts of the country especially in Mindanao during the forecast period.

GEFS Week-1 Exceedance Prob. > 25mm
Valid: 20220106 - 20220112



High probability of rainfall to exceed 25mm in parts of Cagayan, Samar Provinces and most parts of Mindanao (except Davao del Norte, South Cotabato & Sarangani) while less likely for the rest of the country during the forecast period.

GEFS Week-1 Exceedance Prob. > 50mm
Valid: 20220106 - 20220112



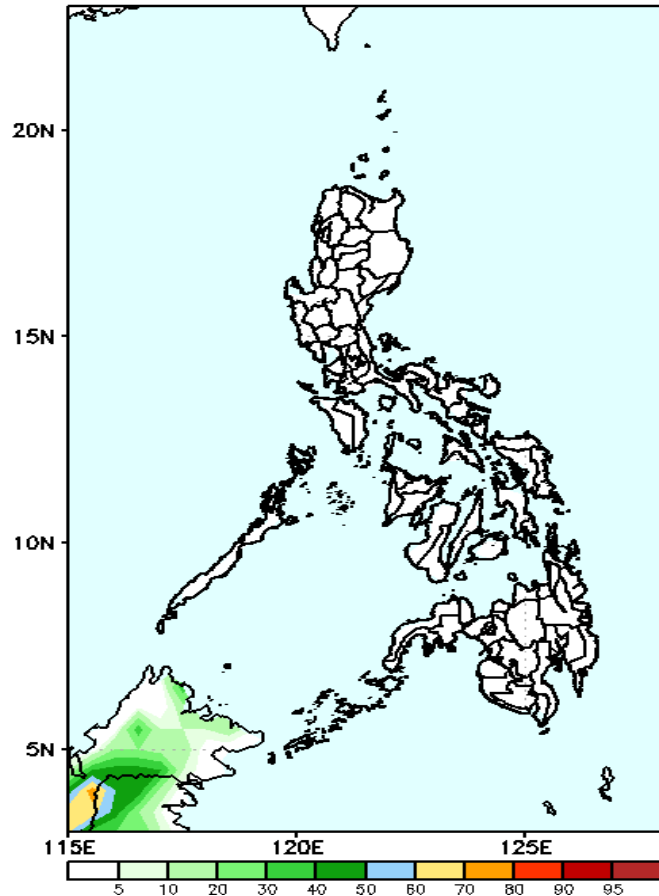
Less probability of rainfall to exceed 50mm in most parts of the country during the forecast period.



Exceedance Probability > 100/150/200 mm

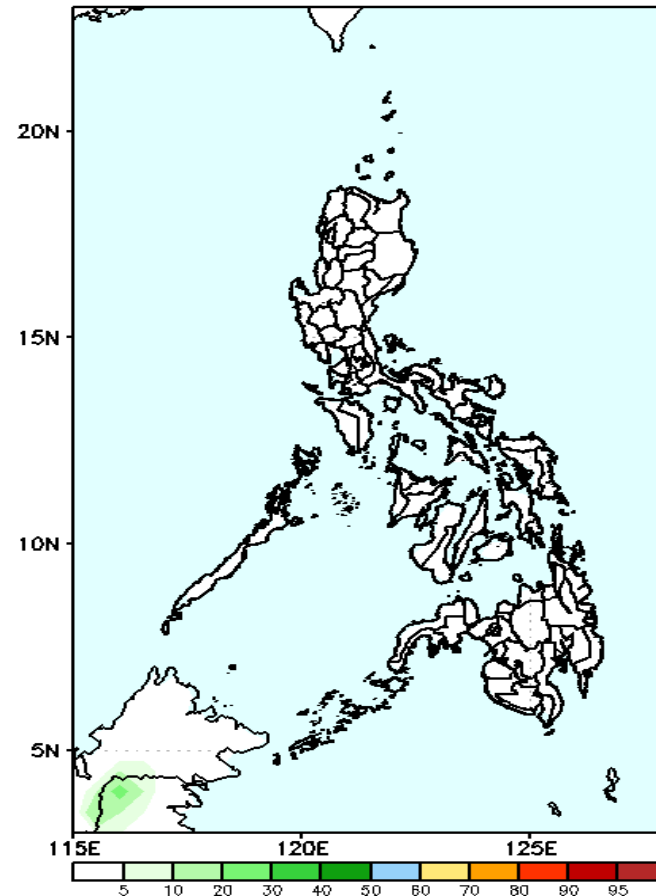
Week 1: Jan 06-12, 2021

GEFS Week-1 Exceedance Prob. > 100mm
Valid: 20220106 - 20220112



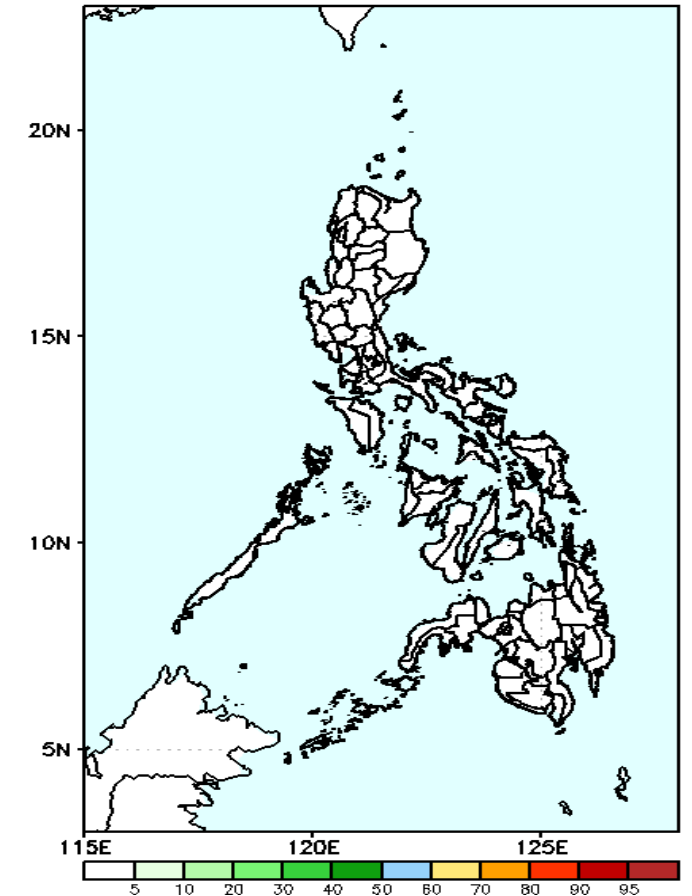
Less probability of rainfall to exceed 100mm in most parts of the country is expected during the forecast period.

GEFS Week-1 Exceedance Prob. > 150mm
Valid: 20220106 - 20220112



Less probability of rainfall to exceed 150mm in most parts of the country is expected during the forecast period.

GEFS Week-1 Exceedance Prob. > 200mm
Valid: 20220106 - 20220112



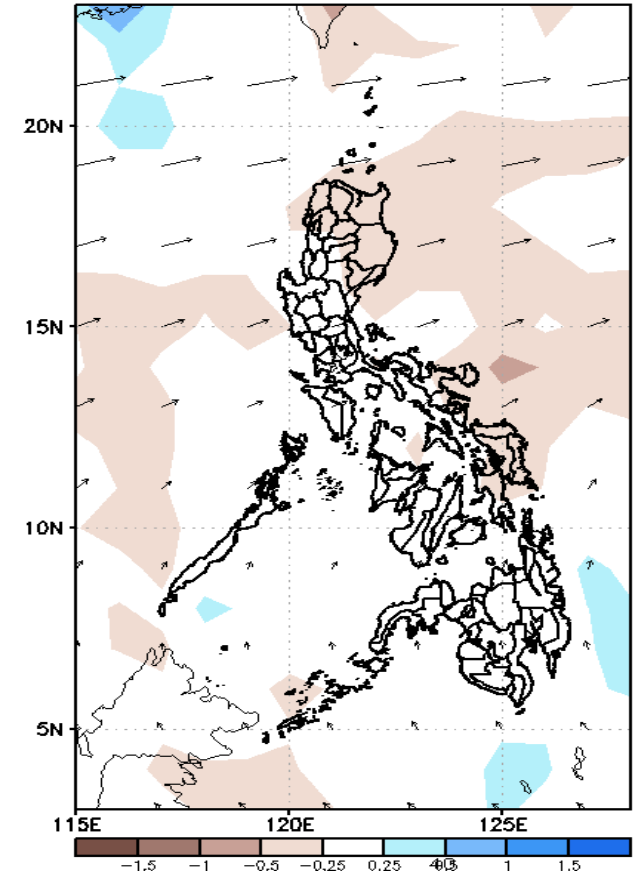
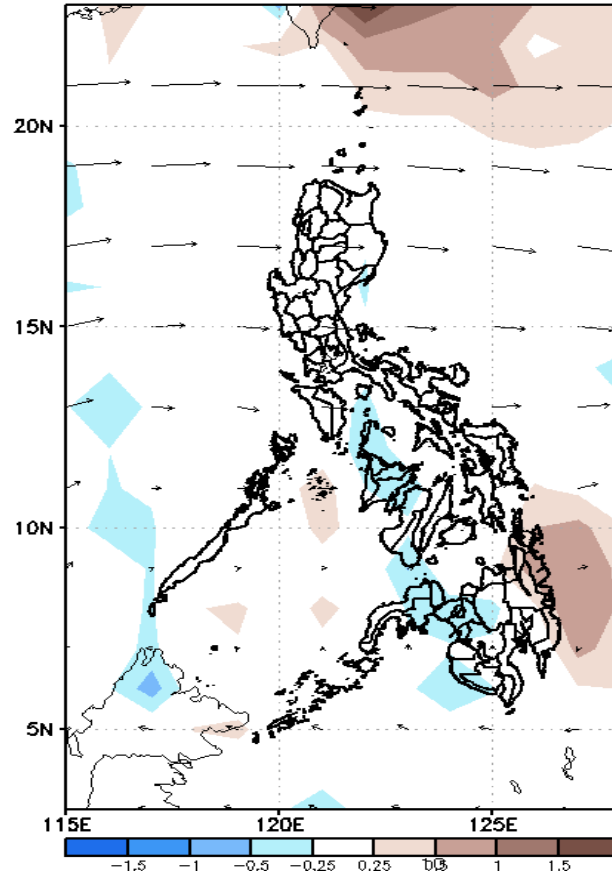
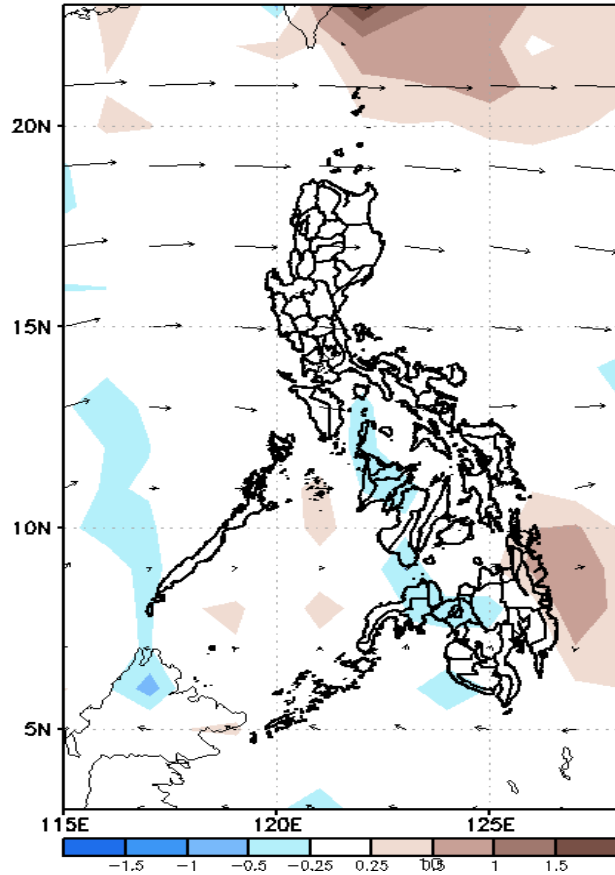
Less probability of rainfall to exceed 200mm in most parts of the country is expected during the forecast period.



GEFS Week-2 Forecasts: Divergence & Wind Anomaly

Week 2: Jan 13-19, 2021

GEFS Week-2 850-hPa Divergence and Wind Anom
Valid: 20220113 - 20220119

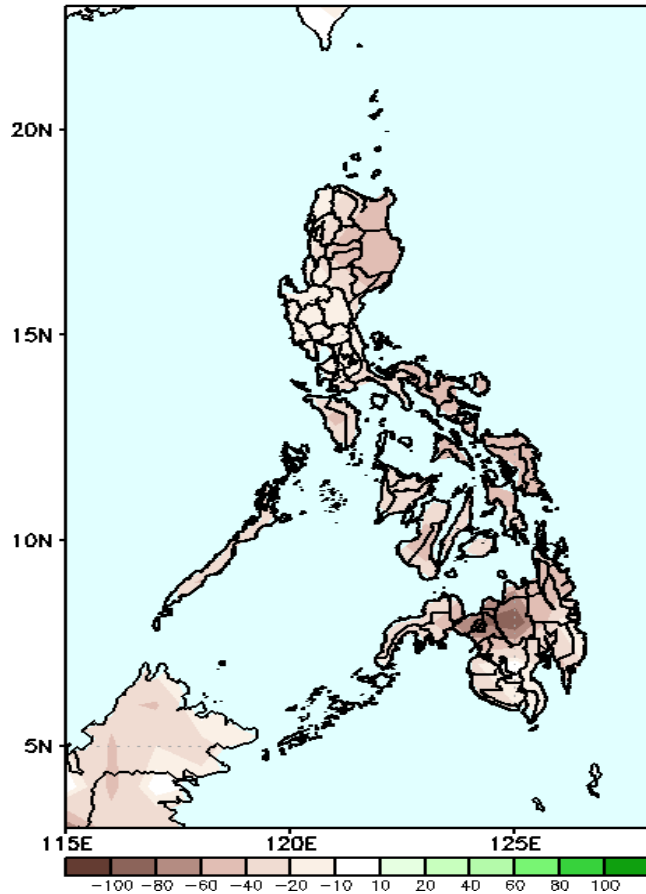


Upper and low level Divergence suggest less likelihood of precipitation in most parts of the country. Northeast Monsoon affecting Northern Luzon while Easterlies affecting the rest of the country during the forecast period..

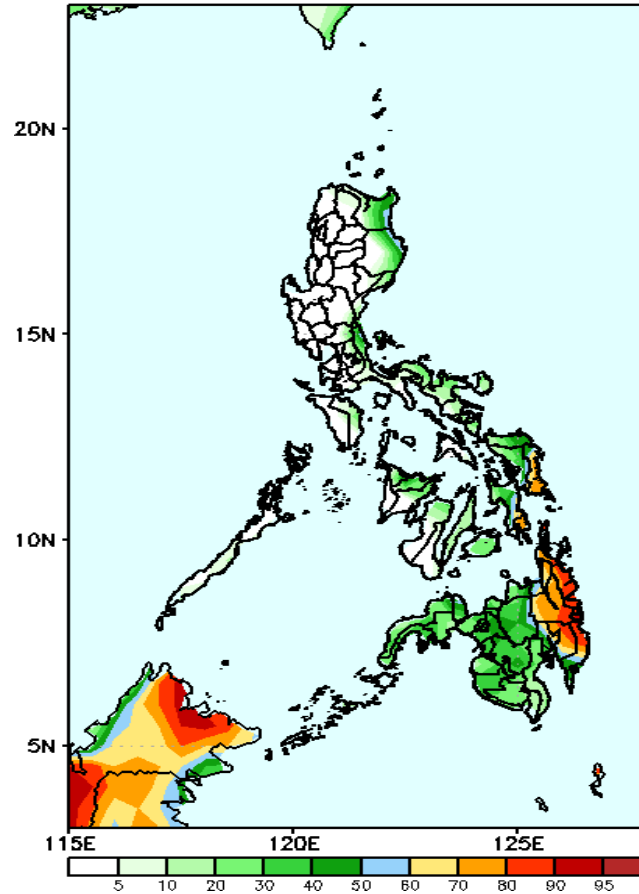
Precipitation Anomaly and Exceedance Probability > 25/50 mm

Week 2: Jan 13-19, 2021

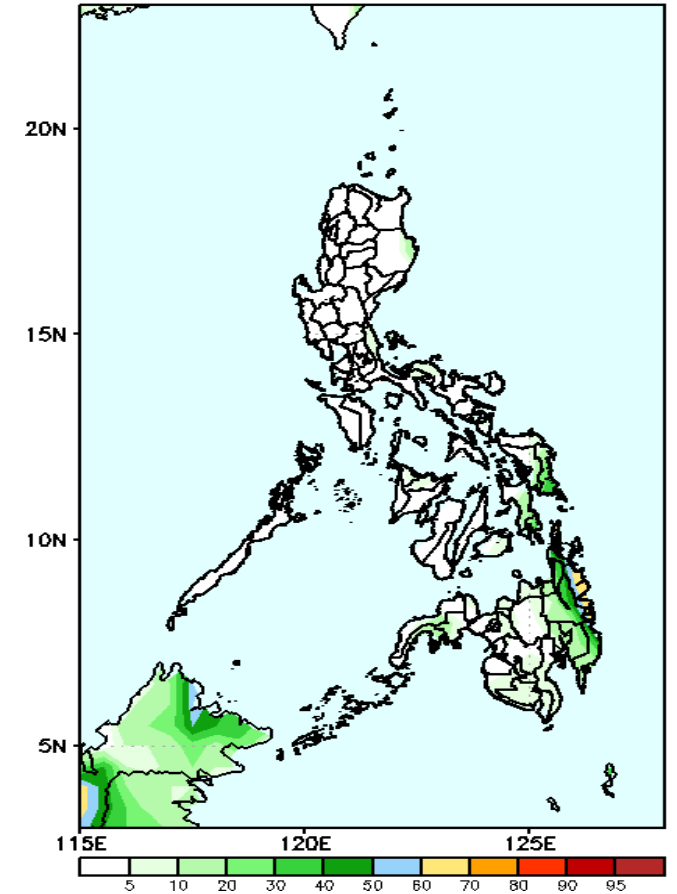
GEFS Week-2 Precip Anomaly
Valid: 20220113 - 20220119



GEFS Week-2 Exceedance Prob. > 25mm
Valid: 20220113 - 20220119



GEFS Week-2 Exceedance Prob. > 50mm
Valid: 20220113 - 20220119



Rainfall deficit of 20-80mm is expected in most parts of the country during the forecast period

High probability of rainfall to exceed 25mm in Eastern Samar, Southern Leyte, and most parts of CARAGA & Davao region while less likely for the rest of the country during the forecast period.

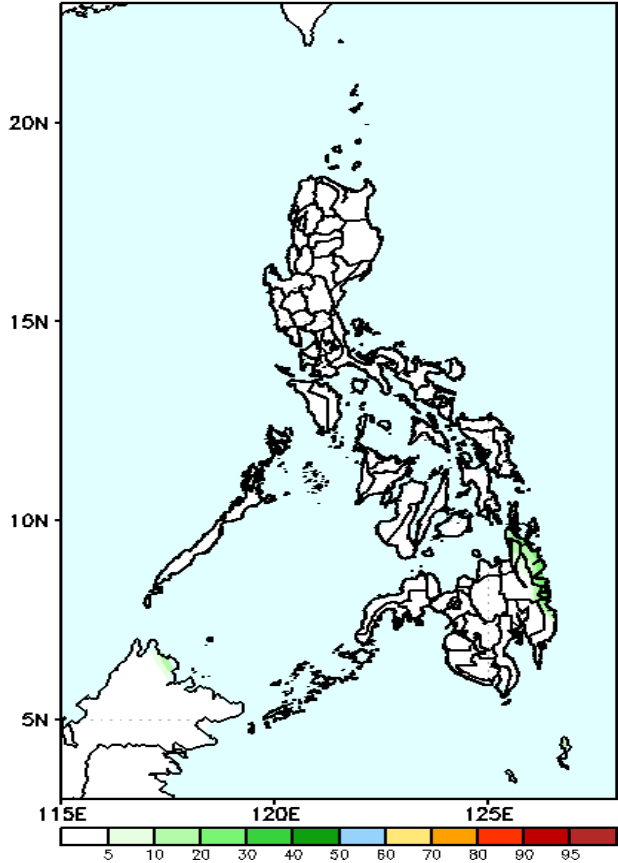
Less probability of rainfall to exceed 50mm in most parts of the country during the forecast period.



Exceedance Probability > 100/150/200 mm

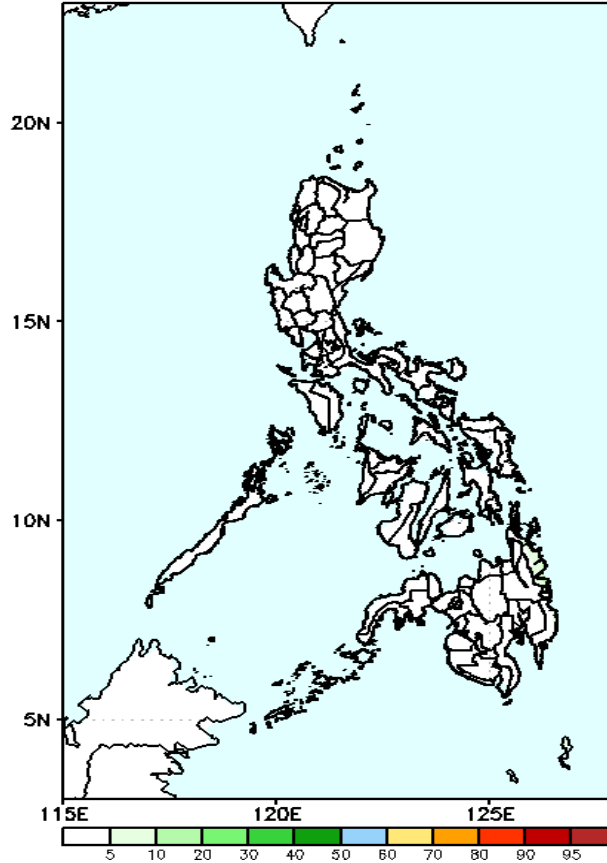
Week 2: Jan 13-19, 2021

GEFS Week-2 Exceedance Prob. > 100mm
Valid: 20220113 - 20220119



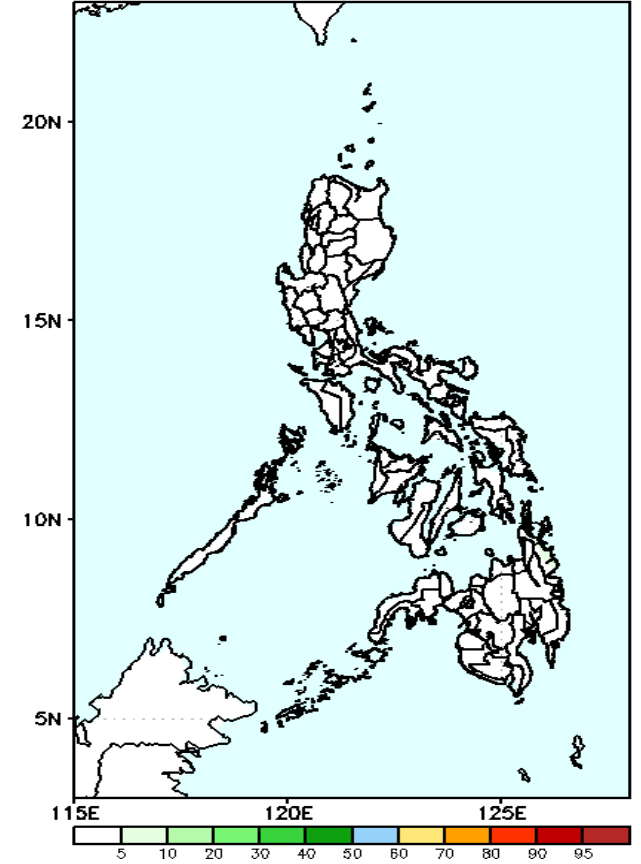
Less probability of rainfall to exceed 100mm in most parts of the country is expected during the forecast period.

GEFS Week-2 Exceedance Prob. > 150mm
Valid: 20220113 - 20220119



Less probability of rainfall to exceed 150mm in most parts of the country is expected during the forecast period.

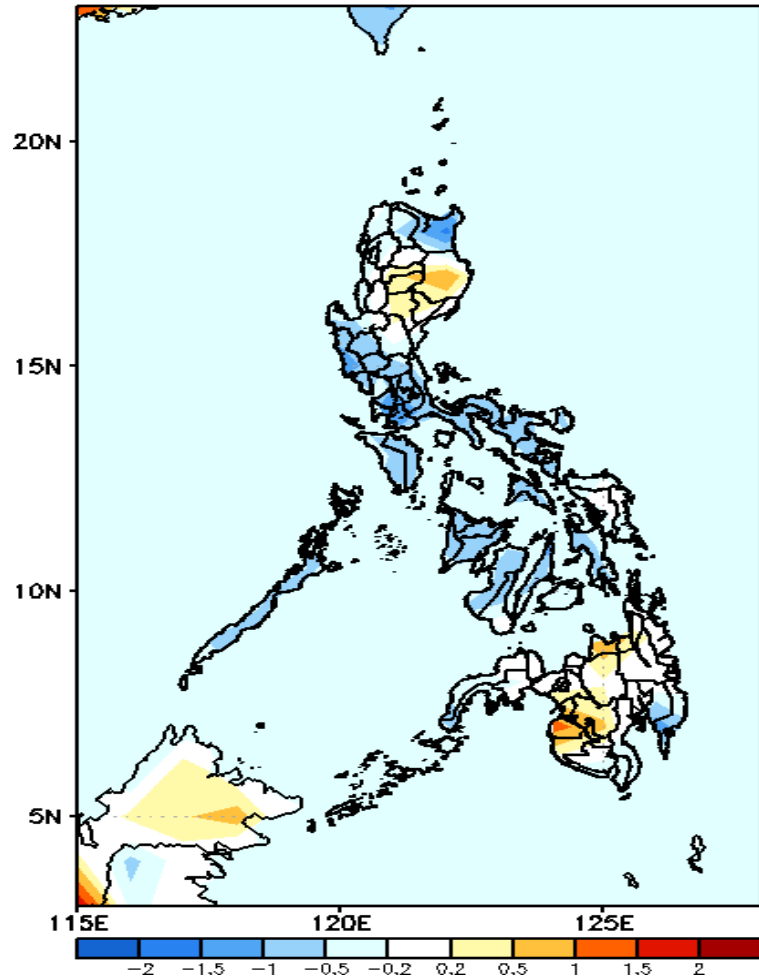
GEFS Week-2 Exceedance Prob. > 200mm
Valid: 20220113 - 20220119



Less probability of rainfall to exceed 200mm in most parts of the country is expected during the forecast period.

GEFS Week-1 & 2 Forecasts: T2m Anomaly

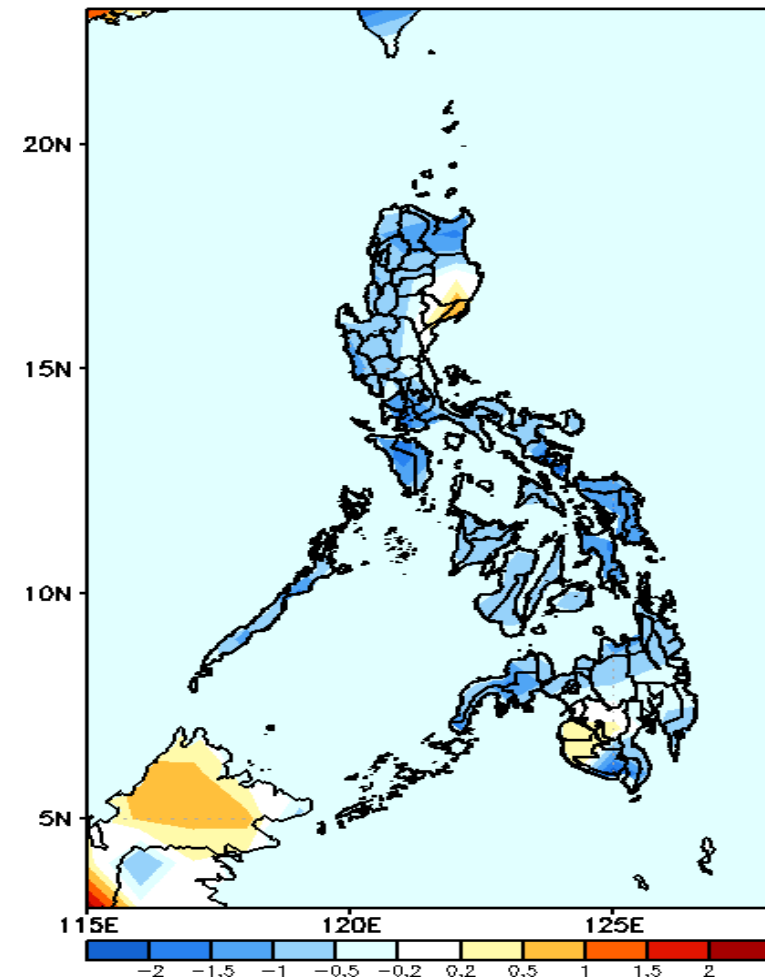
GEFS Week-1 T2m Anomaly
Valid: 20220106 - 20220112



2m Temperature Week 1: Jan 06-12, 2021

Slightly cooler to cooler than average surface air temperature will likely experience in most parts of the country except in Isabela, Cordillera Region, Misamis Oriental & Maguindanao where slightly warmer than average temperature is more likely during the forecast period.

GEFS Week-2 T2m Anomaly
Valid: 20220113 - 20220119



2m Temperature Week 2: Jan 13-19, 2021

Slightly cooler to cooler than average surface air temperature will likely experience most parts of the country except in Isabela. Aurora, Maguindanao and Sultan Kudarat where average to slightly warmer than average temperature is more likely during the forecast period.