



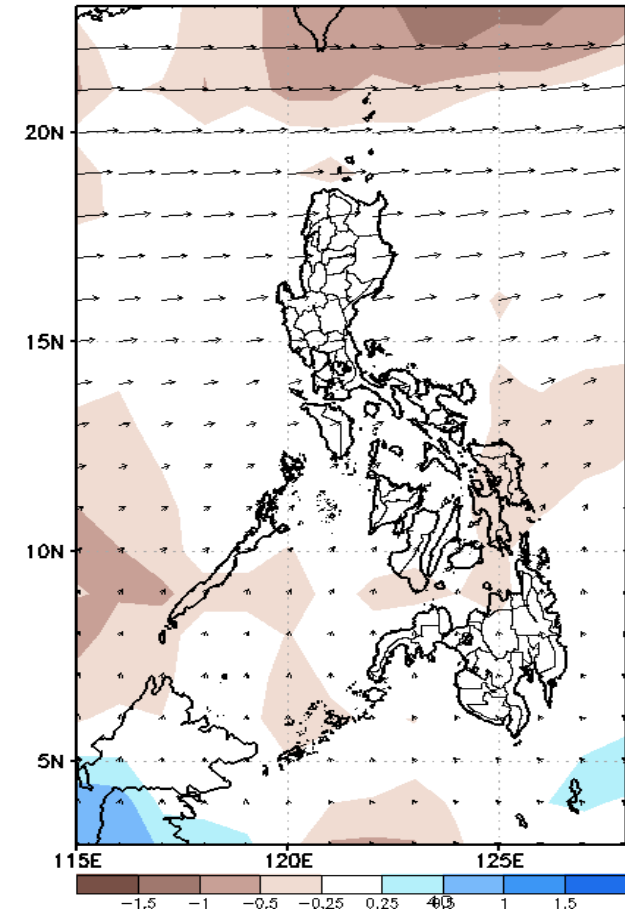
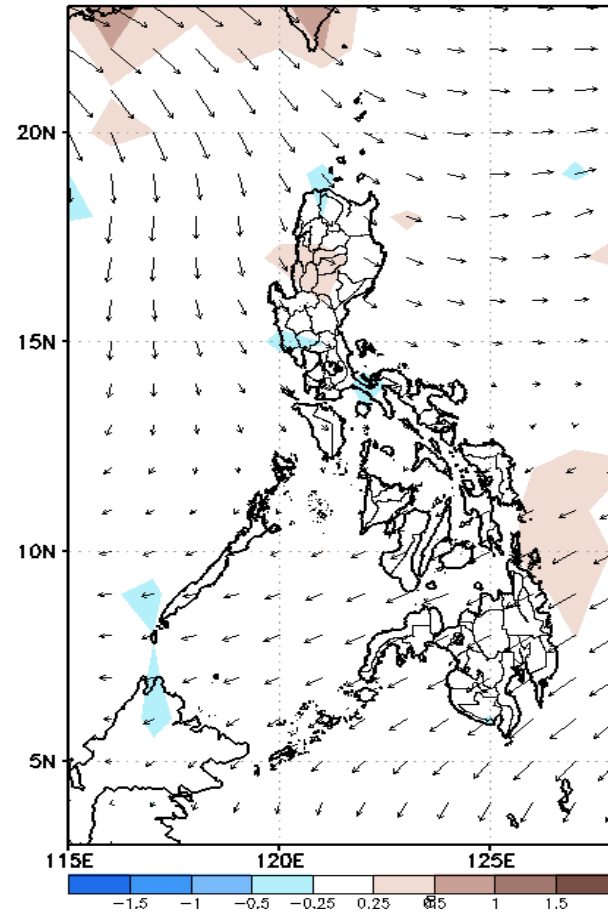
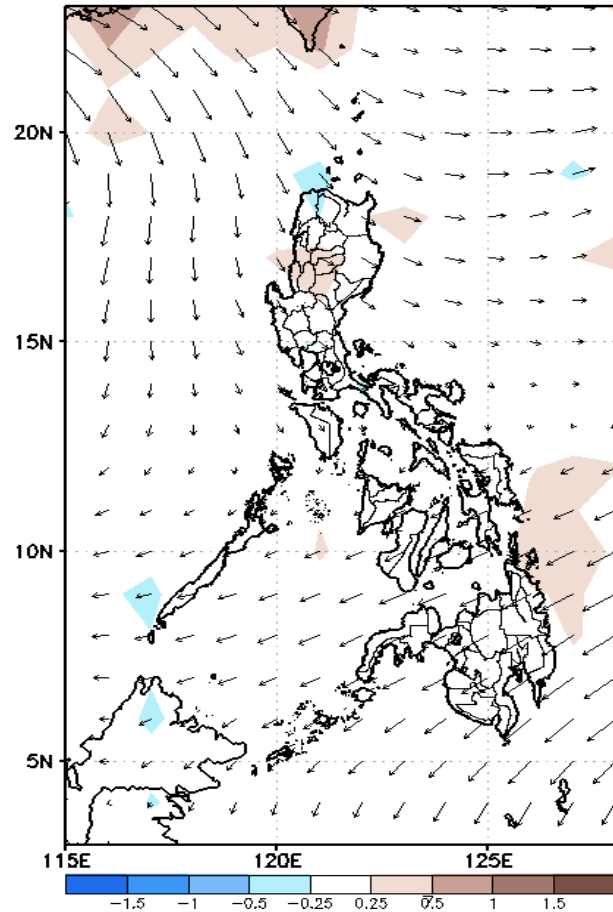
Week 1 & Week 2 Forecast for the Philippines using GEFS Model



GEFS Week-1 Forecasts: Wind Anomaly Forecast

Week 1: Mar 06-12, 2023

GEFS Week-1 850-hPa Divergence and Wind Anom
Valid: 20230306 - 20230312

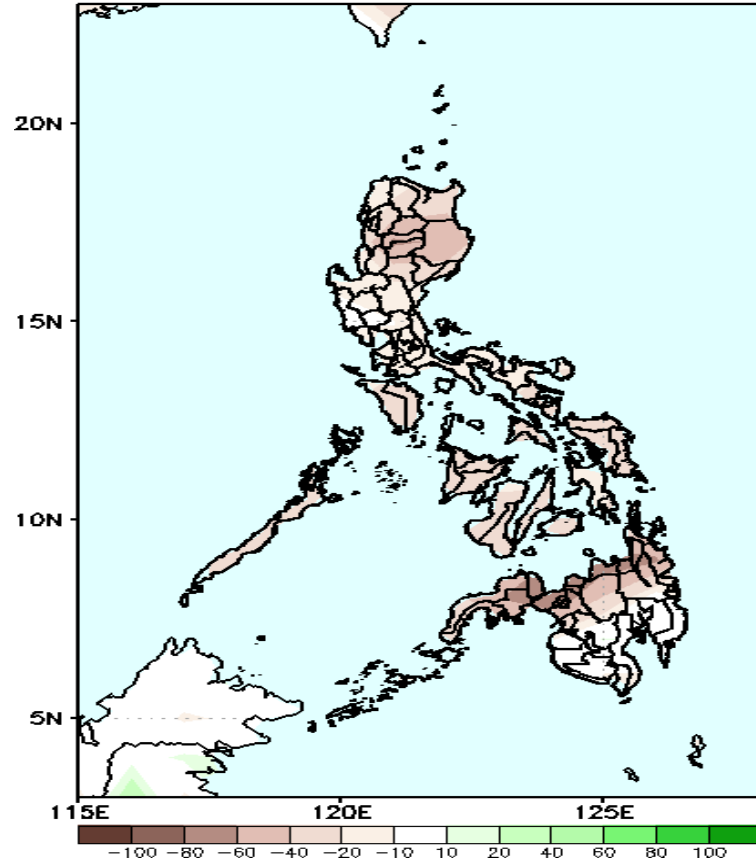


Weak northeast monsoon is forecasted to affect the eastern section of northern and Central Luzon while easterlies affecting the rest of the country during the forecast period.

Precipitation Anomaly and Exceedance Probability > 25/50 mm

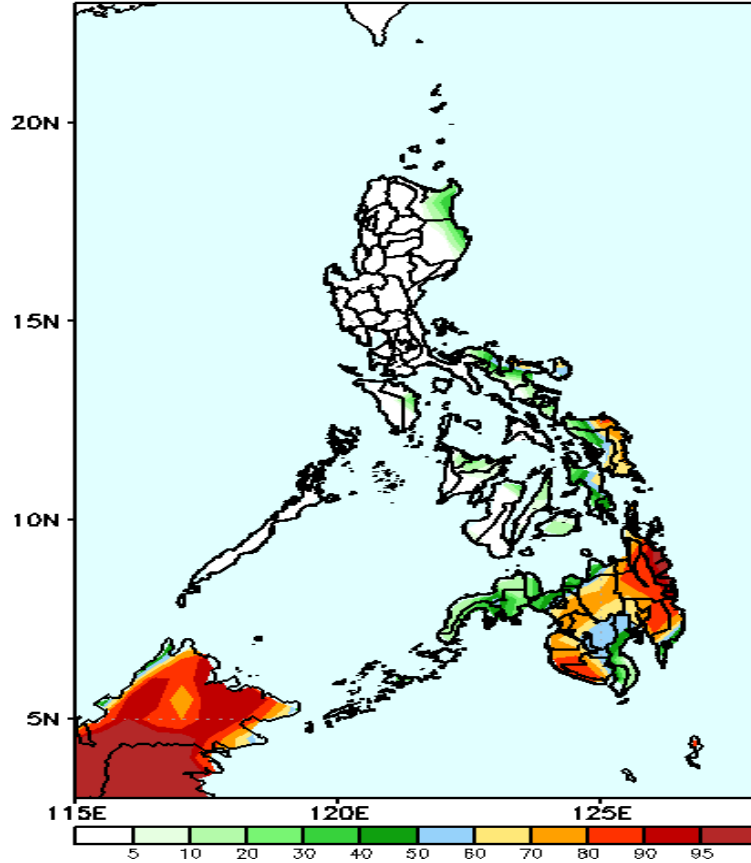
Week 1: Mar 06-12, 2023

GEFS Week-1 Precip Anomaly
Valid: 20230306 - 20230312



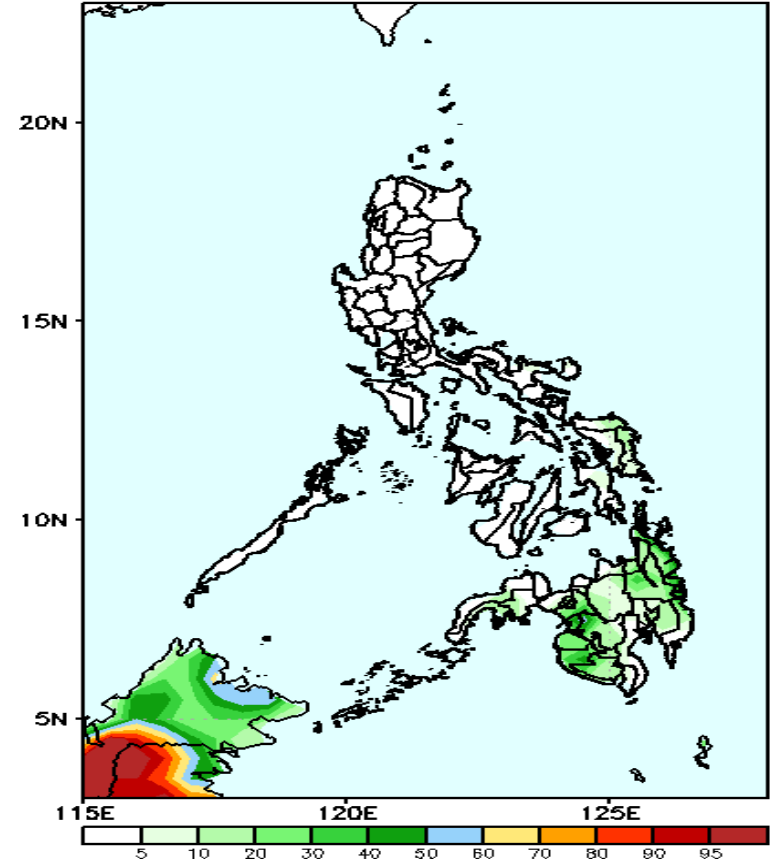
Rainfall deficit of 20-80mm is expected in most parts of the country during the forecast period.

GEFS Week-1 Exceedance Prob. > 25mm
Valid: 20230306 - 20230312



High to a very high probability of rainfall exceeding 25mm over Eastern Samar, Northern Samar, Caraga, Davao Region, Maguindanao, Cotabato City, and most of Northern Mindanao and SOCCSKARGEN while low chance over the rest of the country.

GEFS Week-1 Exceedance Prob. > 50mm
Valid: 20230306 - 20230312

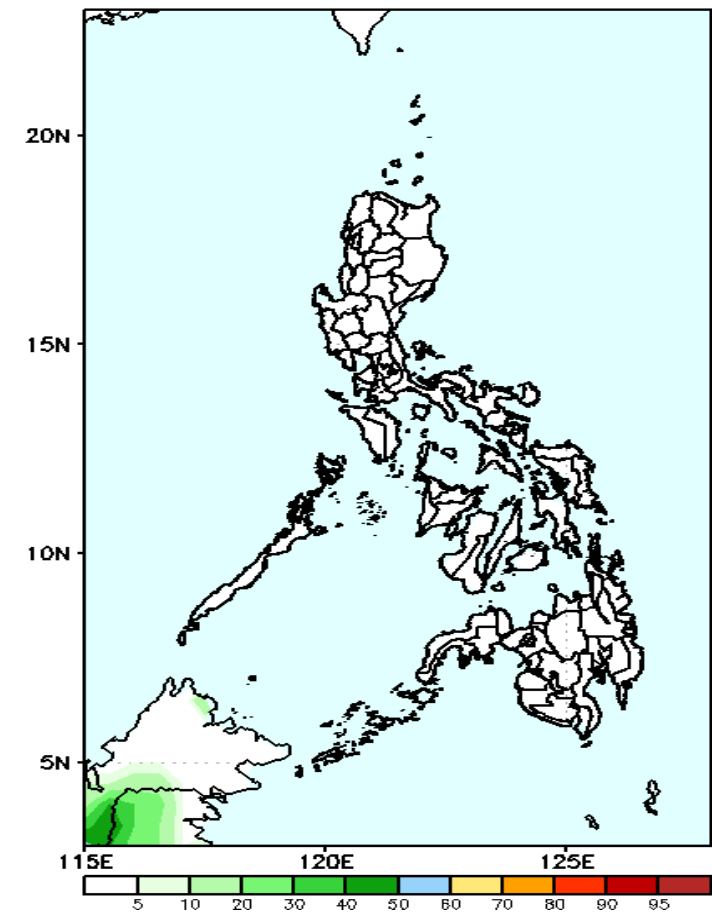


Low probability of rainfall exceeding 50mm across the country.

Exceedance Probability > 100/150/200 mm

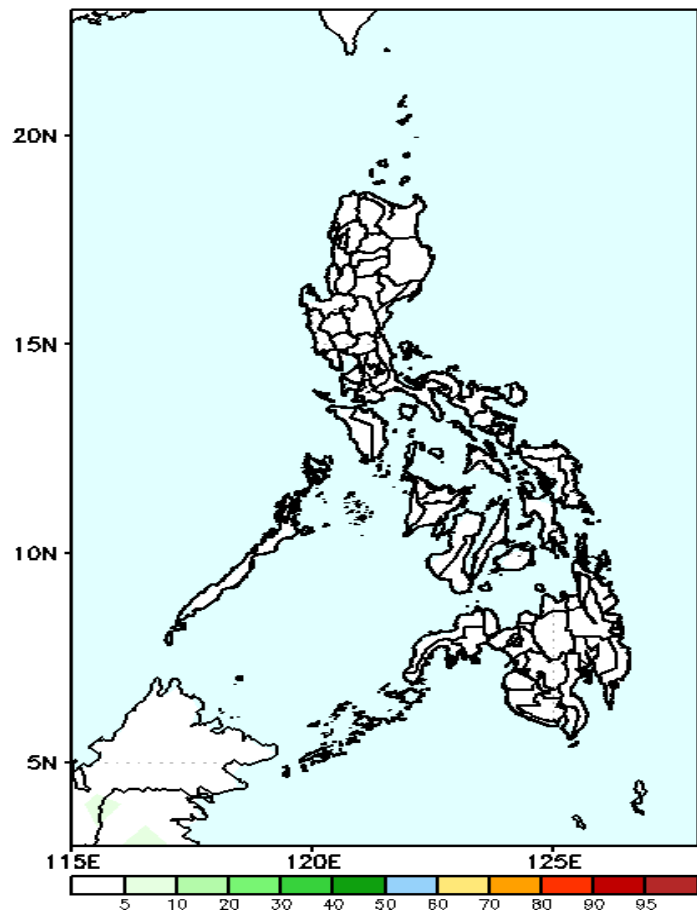
Week 1: Mar 06-12, 2023

GEFS Week-1 Exceedance Prob. > 100mm
Valid: 20230306 – 20230312



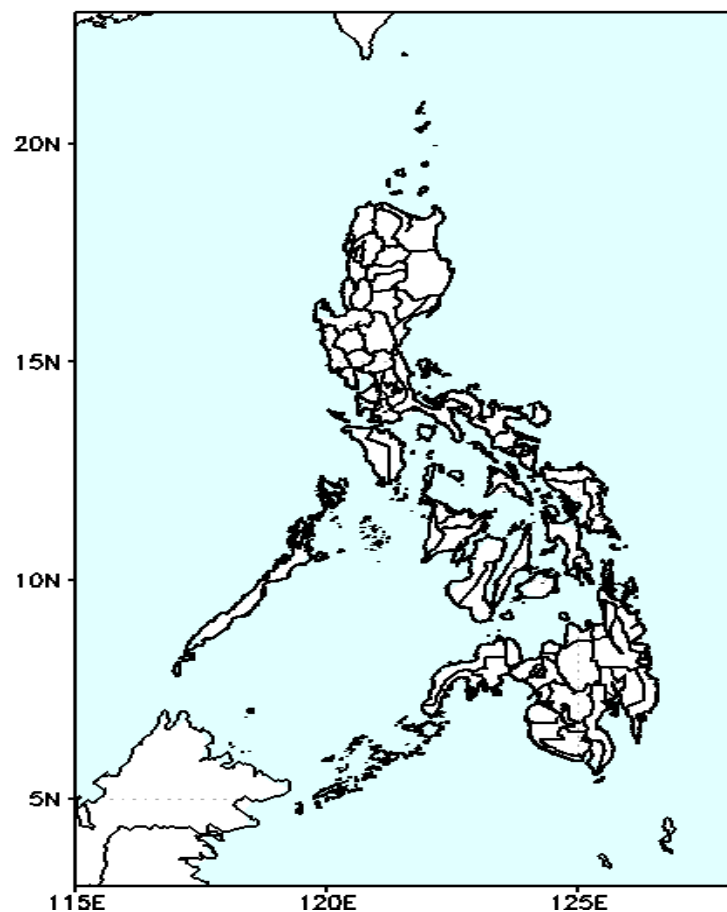
Low probability of rainfall to exceed 100mm in most parts of the country during the forecast period.

GEFS Week-1 Exceedance Prob. > 150mm
Valid: 20230306 – 20230312



Low probability of rainfall to exceed 150mm in most parts of the country during the forecast period.

GEFS Week-1 Exceedance Prob. > 200mm
Valid: 20230306 – 20230312

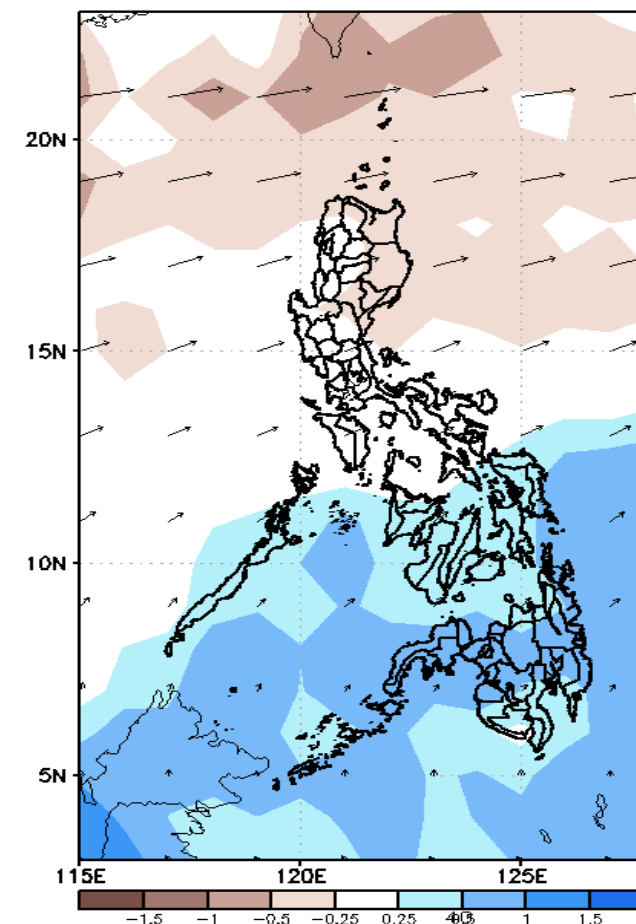
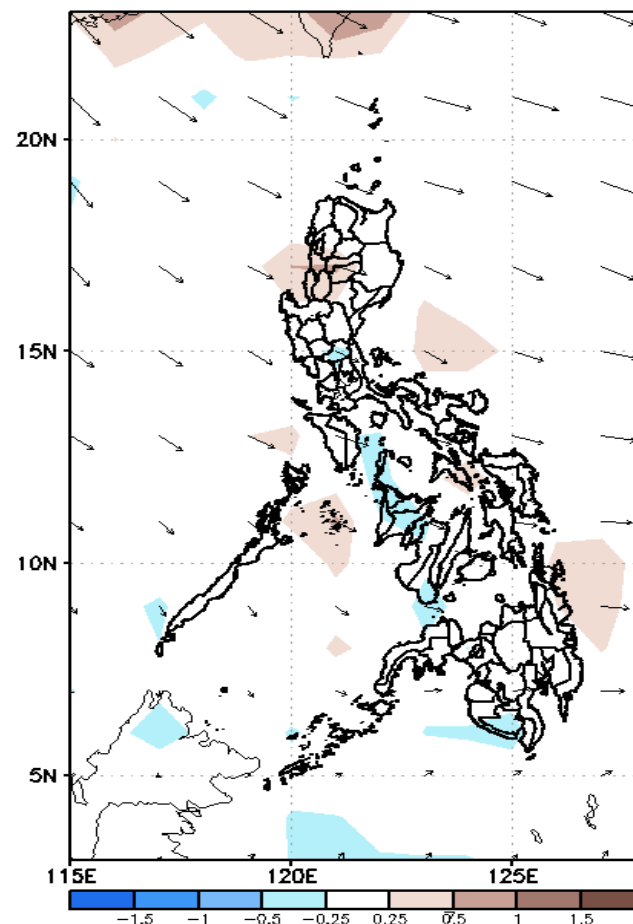
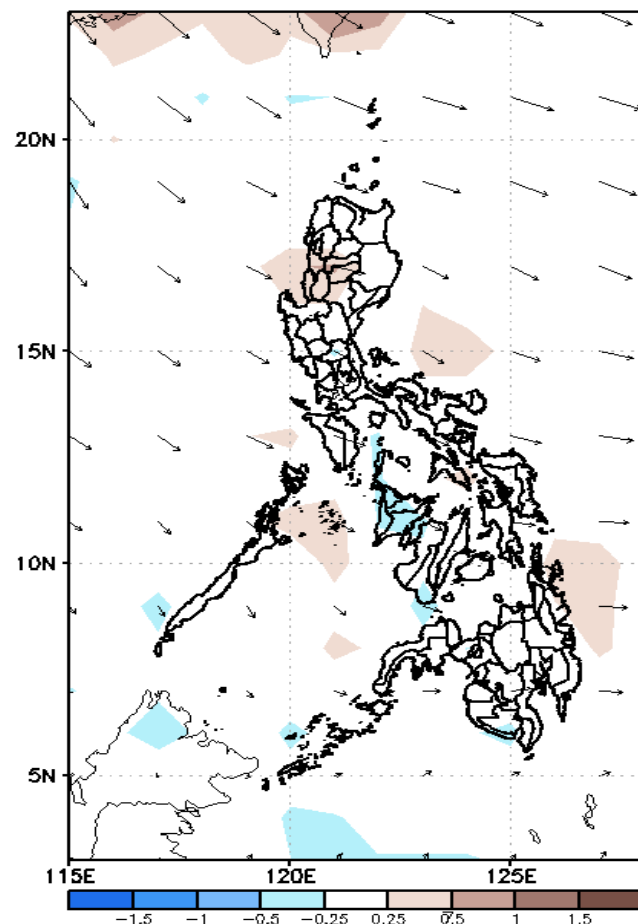


Low probability of rainfall to exceed 200mm in most parts of the country during the forecast period.

GEFS Week-2 Forecasts: Wind Anomaly Forecast

Week 2: Mar 13-19, 2023

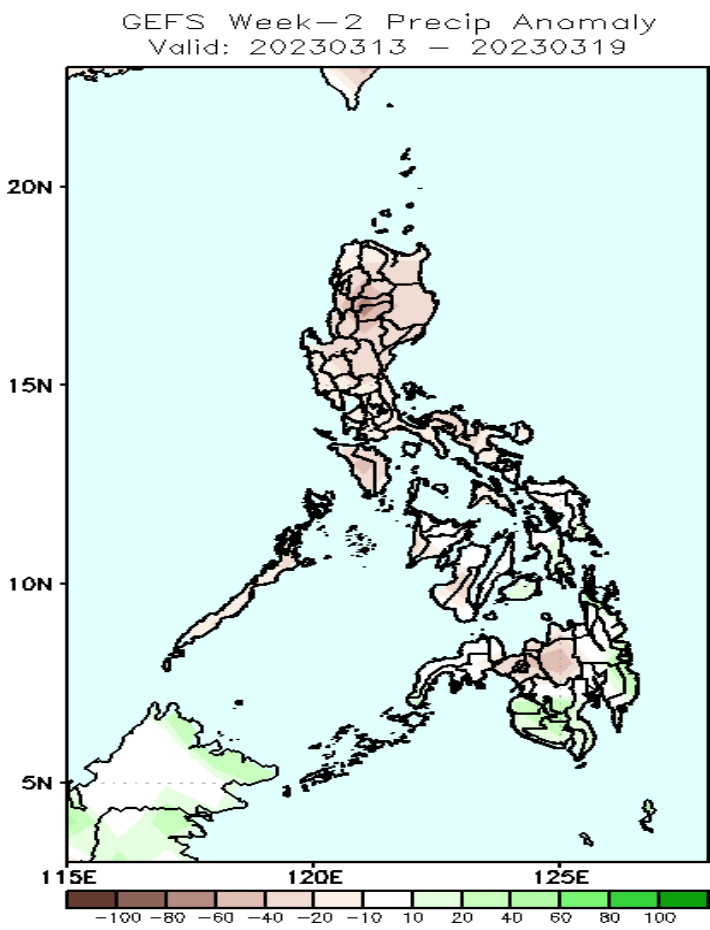
GEFS Week-2 850-hPa Divergence and Wind AnomGEFS Week-2 700-hPa Divergence and Wind AnomGEFS week-2 200-hPa Divergence and Wind Anom
Valid: 20230313 - 20230319



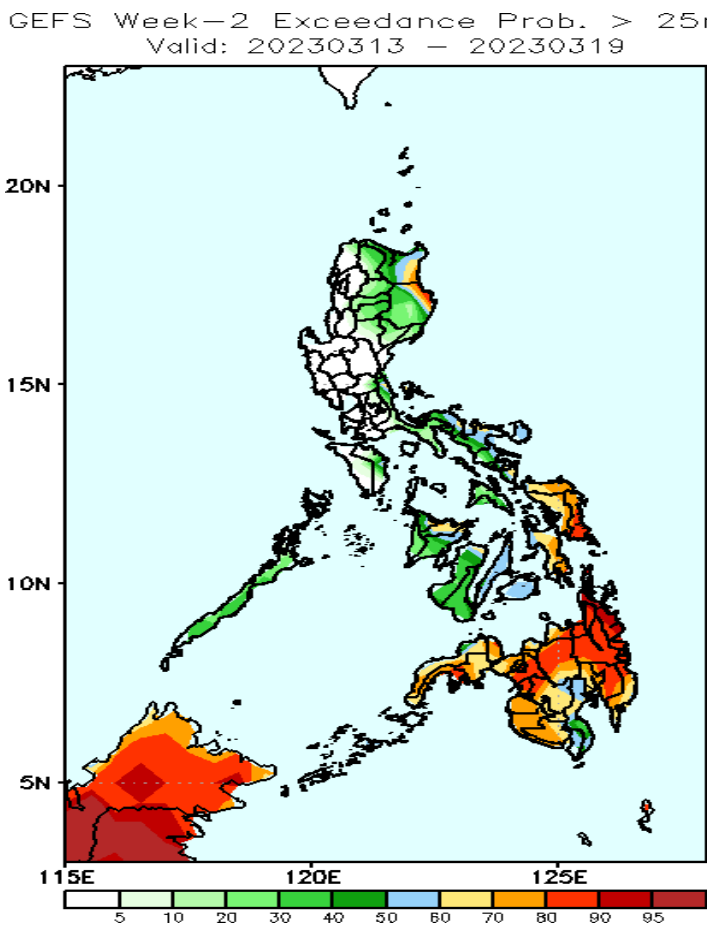
Easterlies is forecasted to affect most parts of the country during the forecast period.

Precipitation Anomaly and Exceedance Probability > 25/50 mm

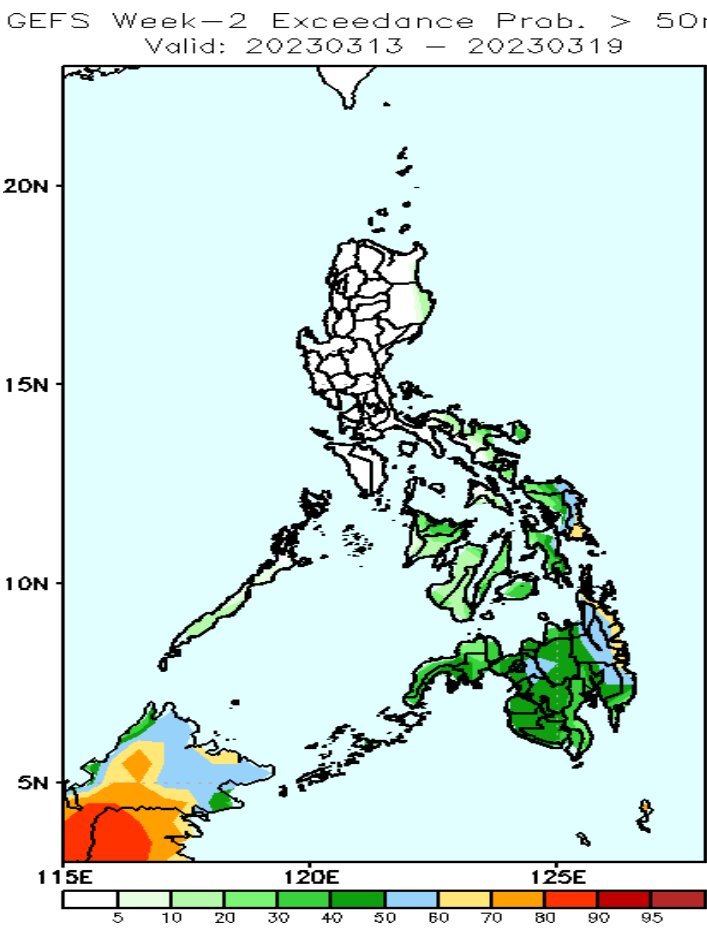
Week 2: Mar 13-19, 2023



Rainfall deficit of 20-60mm is expected in most parts of the country during the forecast period.



High to a very high probability of rainfall exceeding 25mm in most parts of Mindanao, Eastern Visayas, Capiz, Eastern section of Bicol Region, and portions of Cagayan and Isabela while low to moderate chance over the rest of the country.



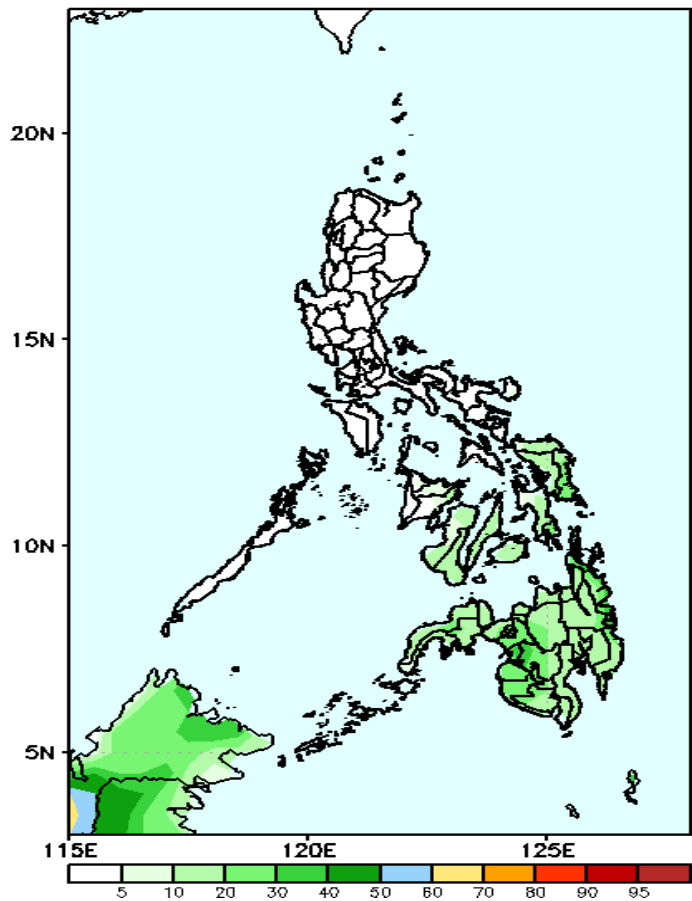
Moderate probability of rainfall exceeding 50mm in Mindanao and Eastern Visayas while low chance over the rest of the country.



Exceedance Probability > 100/150/200 mm

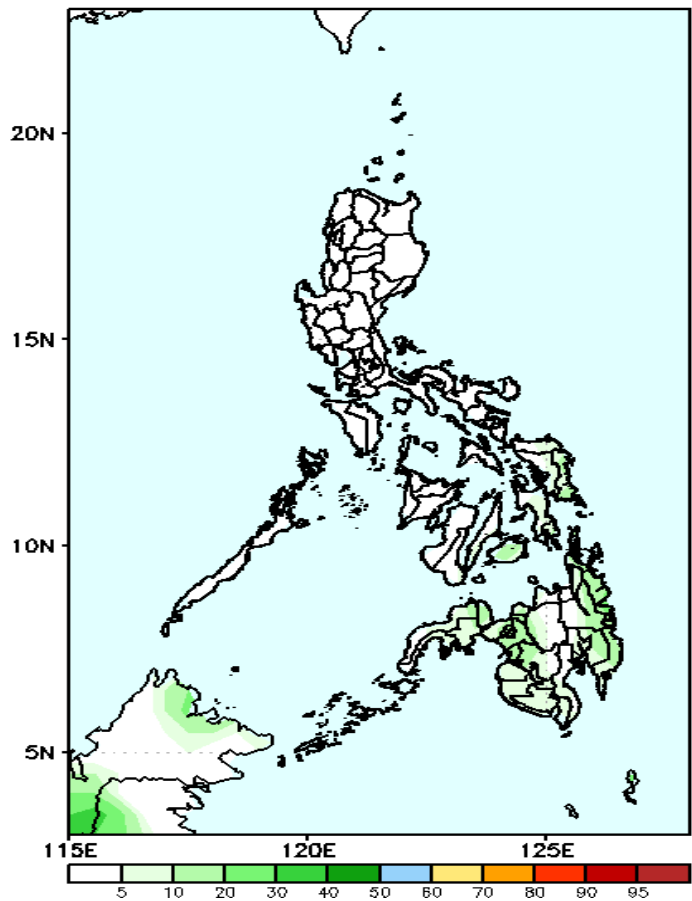
Week 2: Mar 13-19, 2023

GEFS Week-2 Exceedance Prob. > 100mm
Valid: 20230313 – 20230319



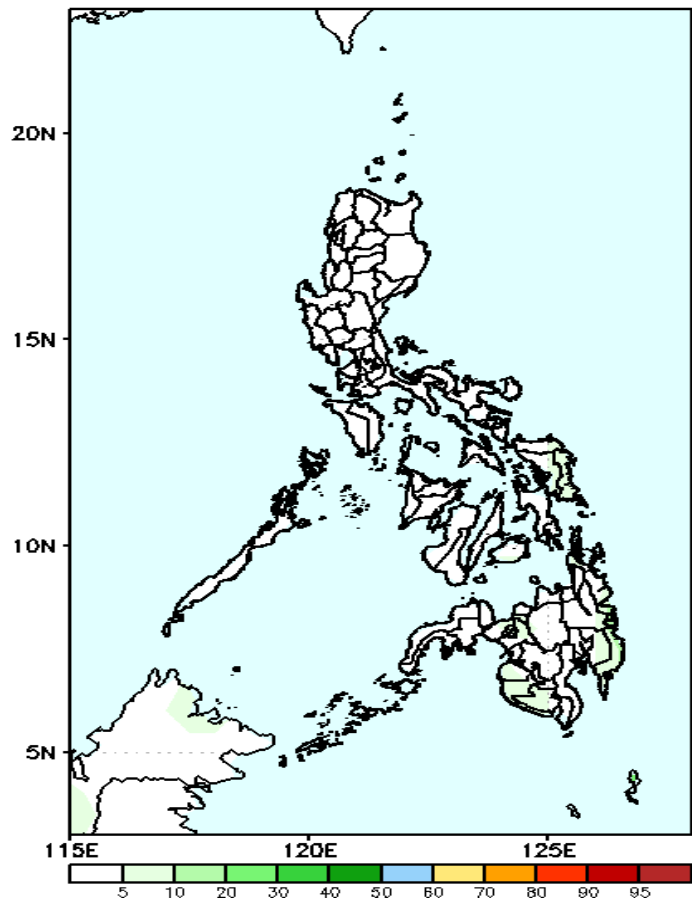
Low probability of rainfall to exceed 100mm in most parts of the country during the forecast period.

GEFS Week-2 Exceedance Prob. > 150mm
Valid: 20230313 – 20230319



Low probability of rainfall to exceed 150mm in most parts of the country during the forecast period.

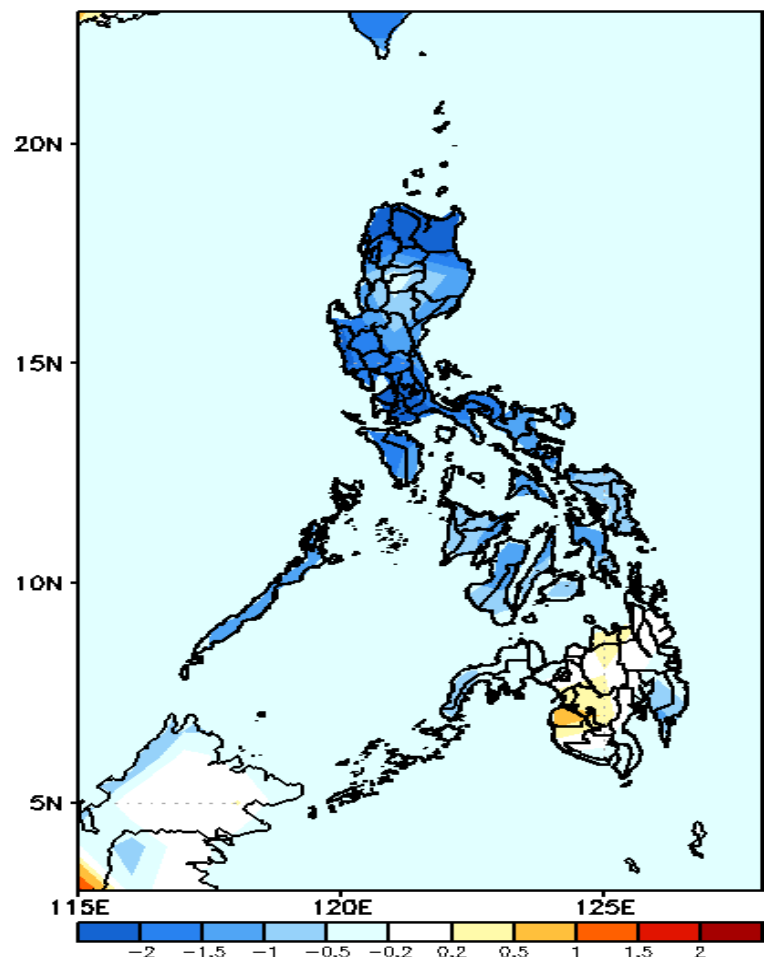
GEFS Week-2 Exceedance Prob. > 200mm
Valid: 20230313 – 20230319



Low probability of rainfall to exceed 200mm in most parts of the country during the forecast period.

GEFS Week-1 & 2 Forecasts: T2m Anomaly

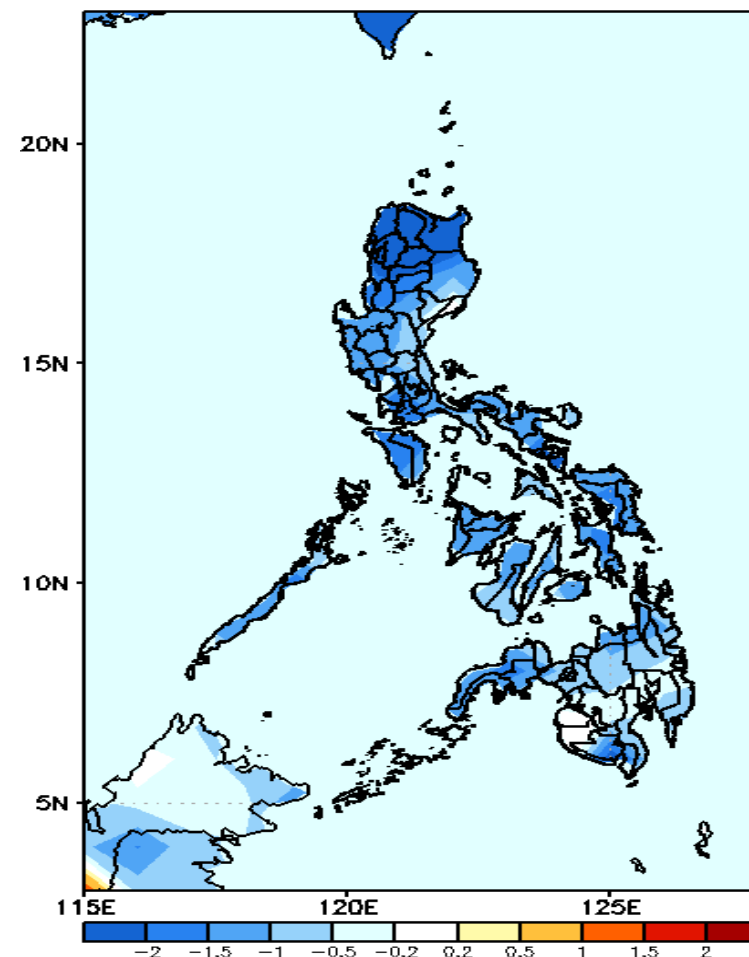
GEFS Week-1 T2m Anomaly
Valid: 20230306 – 20230312



2m Temperature Week 1: Mar 06-12, 2023

Slightly cooler to cooler than average surface air temperature will likely experience in most parts of Luzon and Visayas while average temperature is expected in Mindanao during the forecast period.

GEFS Week-2 T2m Anomaly
Valid: 20230313 – 20230319



2m Temperature Week 2: Mar 13-19, 2023

Slightly cooler to cooler than average surface air temperature will likely experience in most parts of the country during the forecast period.