



USAID
FROM THE AMERICAN PEOPLE



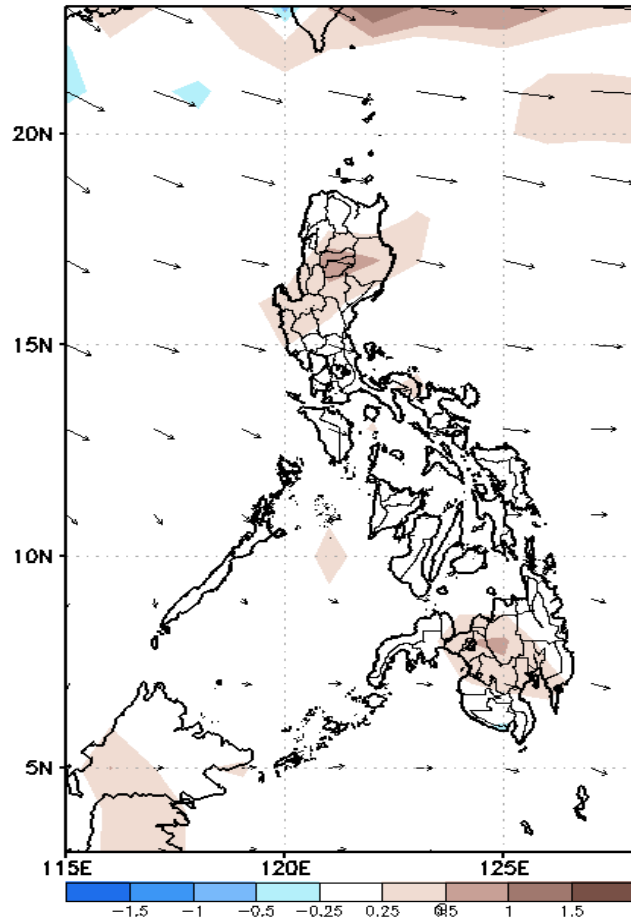
Week 1 & Week 2 Forecast for the Philippines using GEFS Model



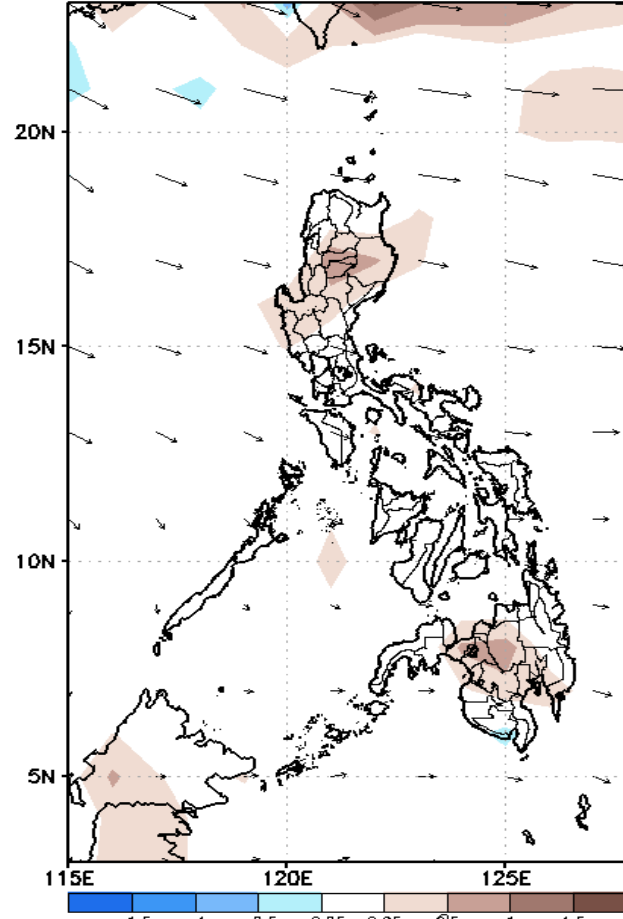
GEFS Week-1 Forecasts: Divergence & Wind Anomaly

Week 1: April 06- April 12, 2020

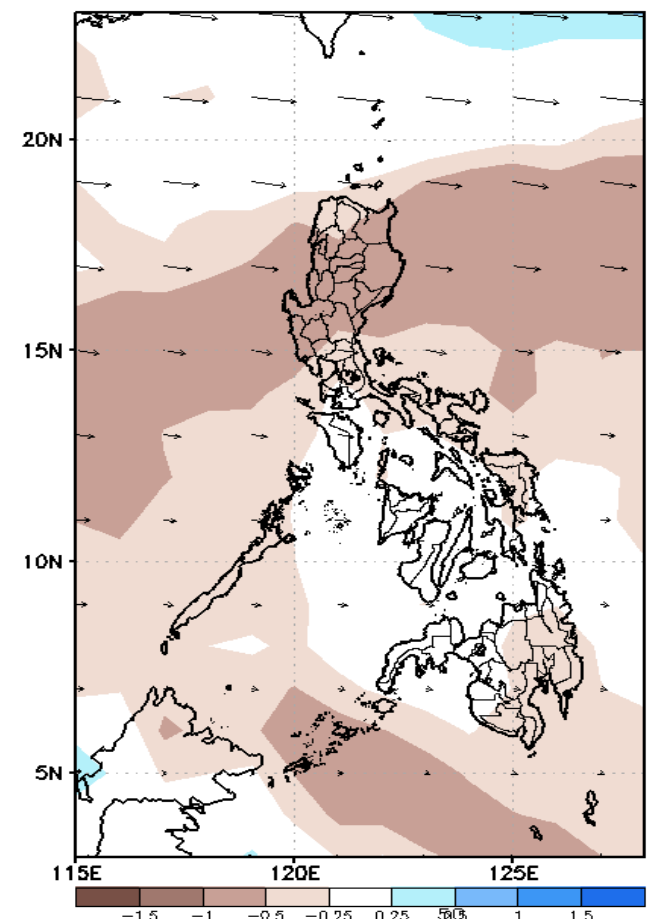
GEFS Week-1 850-hPa Divergence and Wind Anom Valid: 20200406 - 20200412



GEFS Week-1 700-hPa Divergence and Wind Anom Valid: 20200406 - 20200412



GEFS Week-1 200-hPa Divergence and Wind Anom Valid: 20200406 - 20200412

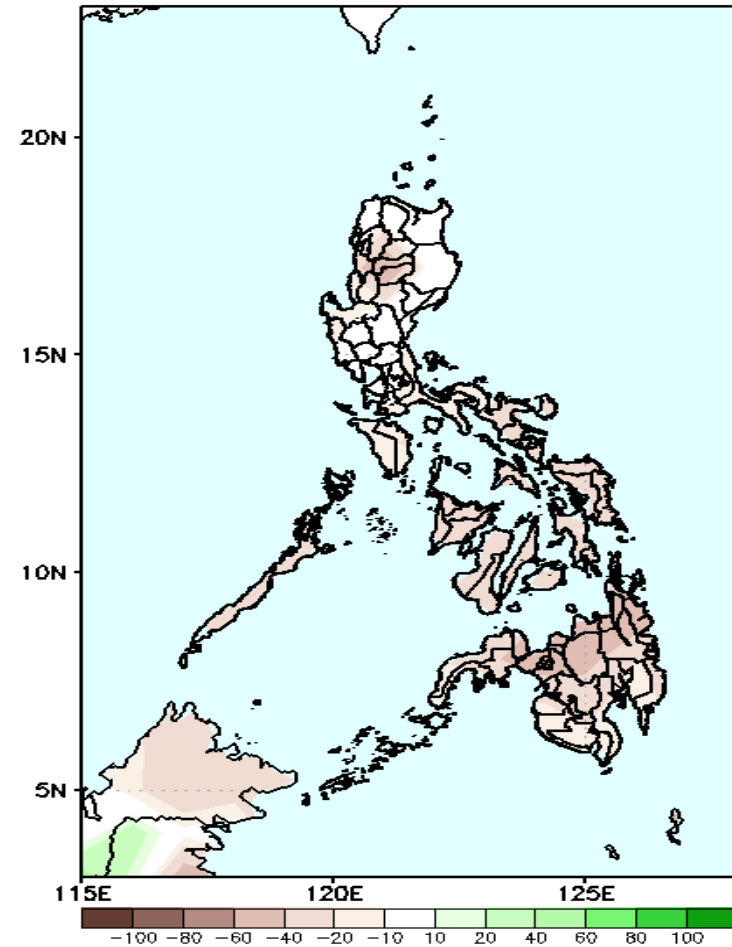


Low level (850 hPa) Divergence show likelihood of precipitation in some parts of Luzon and Mindanao due to localized thunderstorms. Northeasterlies affecting extreme northern Luzon while Easterlies affecting most parts of the country during the forecast period.

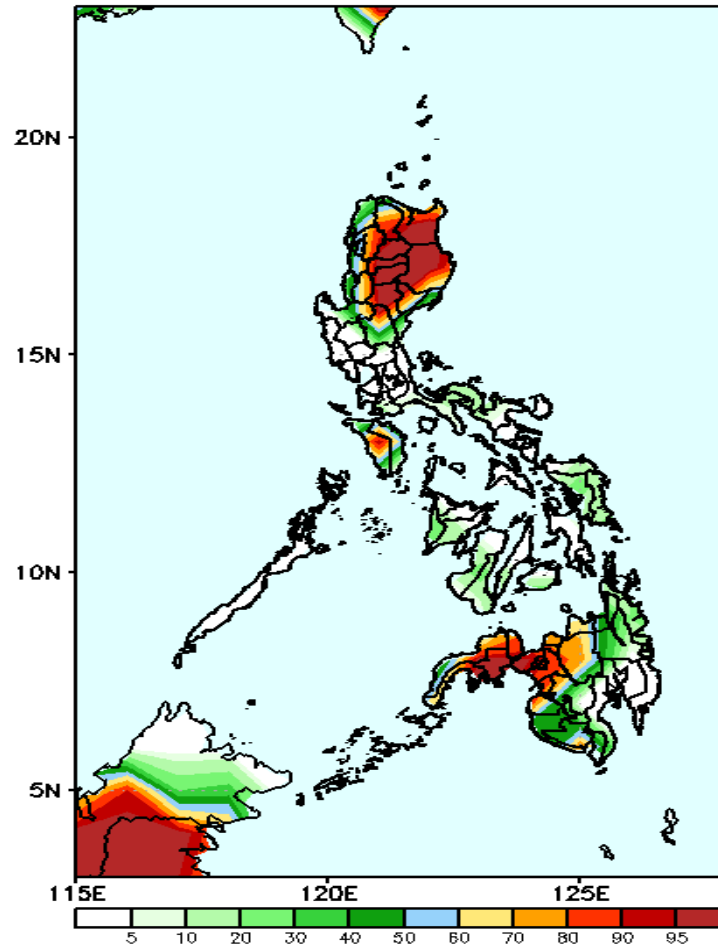
Precipitation Anomaly and Exceedance Probability > 25/50 mm

Week 1: April 06- April 12, 2020

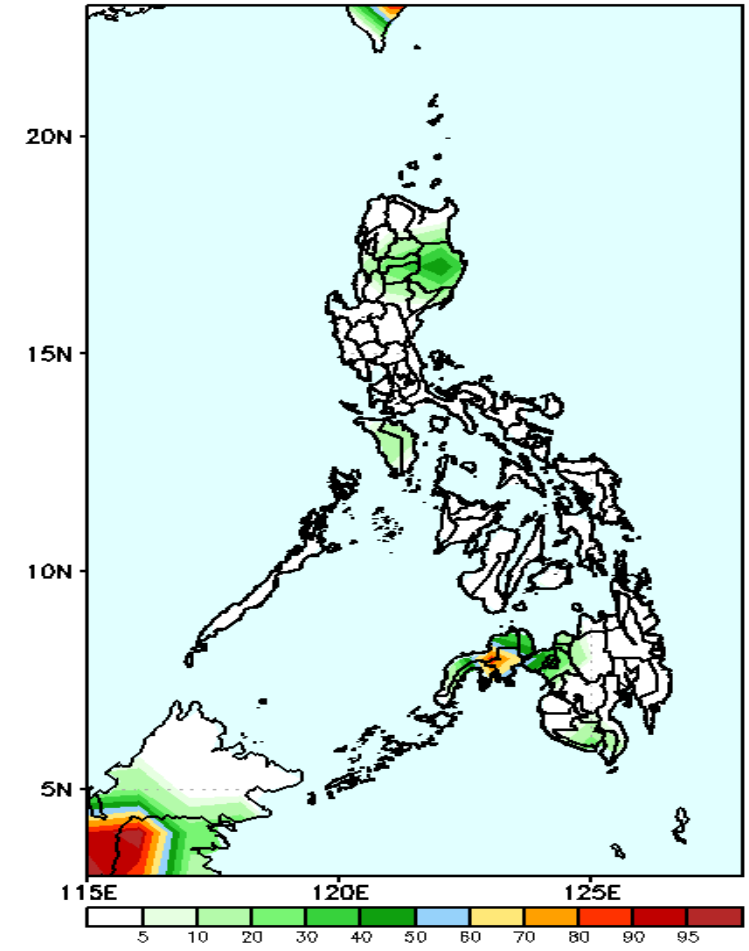
GEFS Week-1 Precip Anomaly
Valid: 20200406 - 20200412



GEFS Week-1 Exceedance Prob. > 25mm
Valid: 20200406 - 20200412



GEFS Week-1 Exceedance Prob. > 50mm
Valid: 20200406 - 20200412



Rainfall deficit of 10-40mm is most likely in most parts of the country during the forecast period.

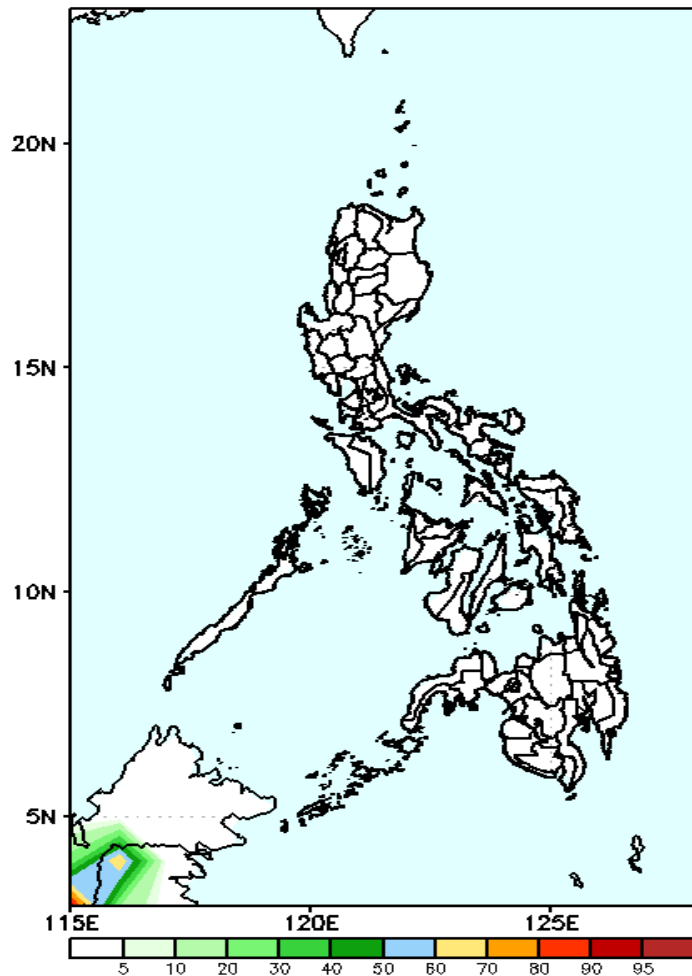
High probability of rainfall to exceed 25mm in Cagayan Valley, CAR, Zamboanga Peninsula and northern Mindanao while less likely for the rest of the country during the forecast period.


Less probability of rainfall to exceed 50mm in most parts of the country except in Isabela, Mt. Province and Zamboanga Peninsula where there is 40-80% chance during the forecast period.

Exceedance Probability > 100/150/200 mm

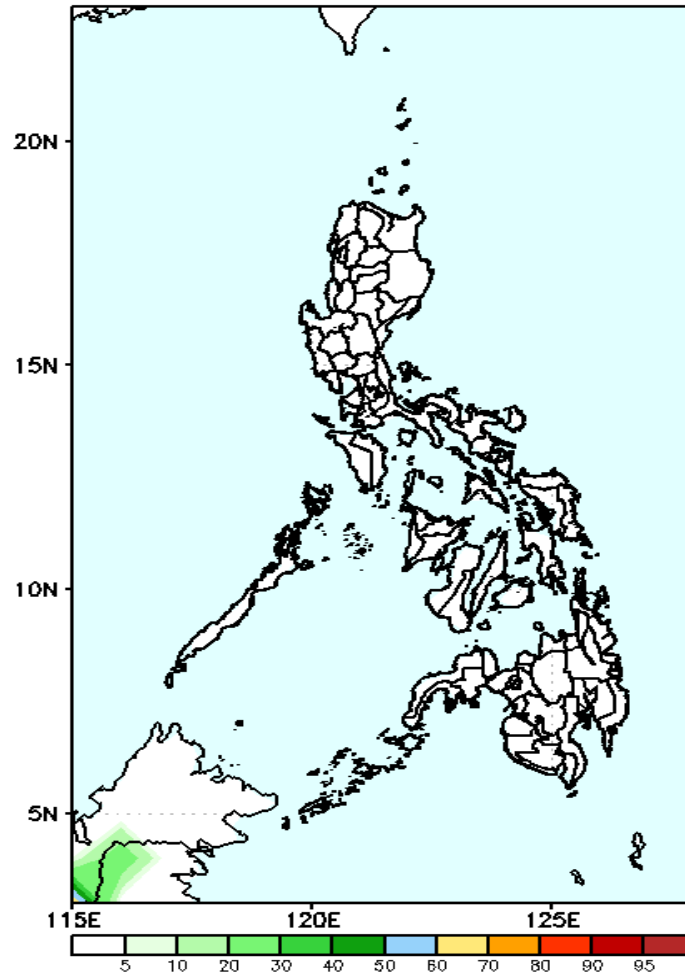
Week 1: April 06- April 12, 2020

GEFS Week-1 Exceedance Prob. > 100mm
Valid: 20200406 - 20200412



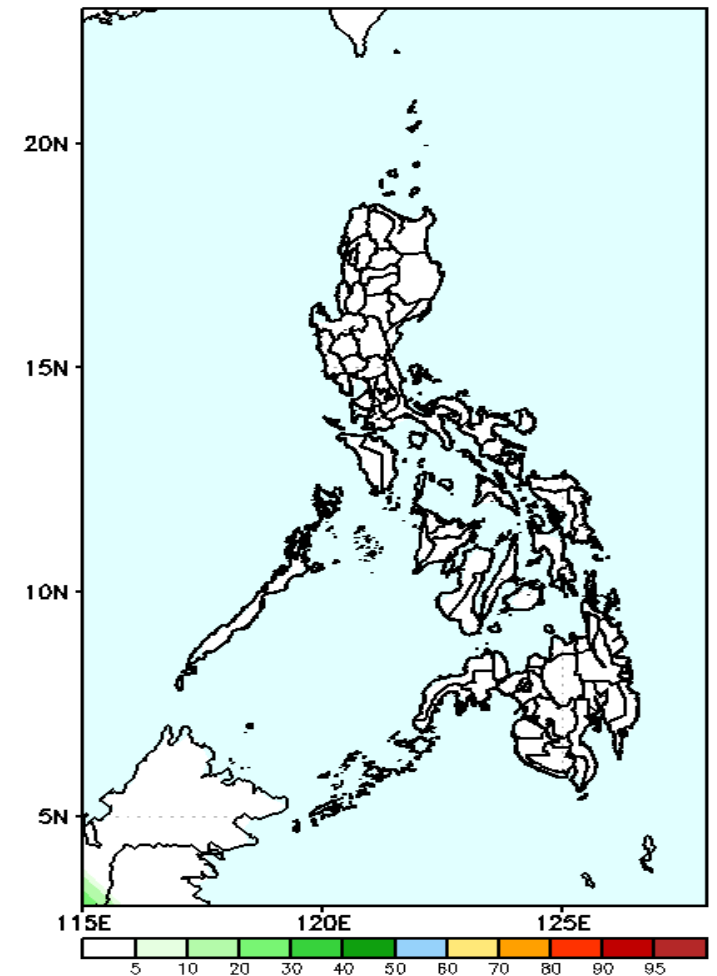
 Less probability of rainfall to exceed 100mm in the whole country during the forecast period.

GEFS Week-1 Exceedance Prob. > 150mm
Valid: 20200406 - 20200412



Less probability of rainfall to exceed 150mm in the whole country during the forecast period.

GEFS Week-1 Exceedance Prob. > 200mm
Valid: 20200406 - 20200412

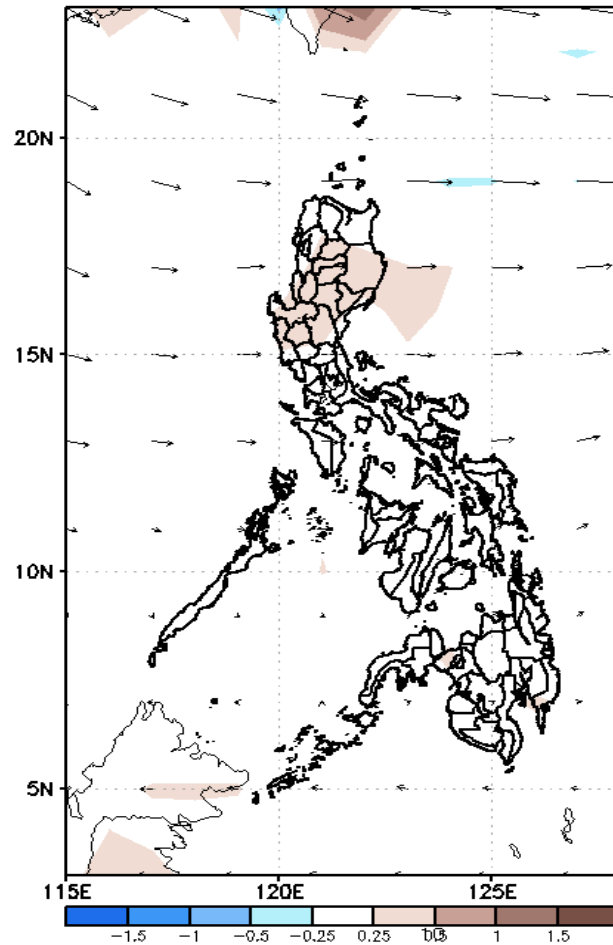


Less probability of rainfall to exceed 200mm in the whole country during the forecast period.

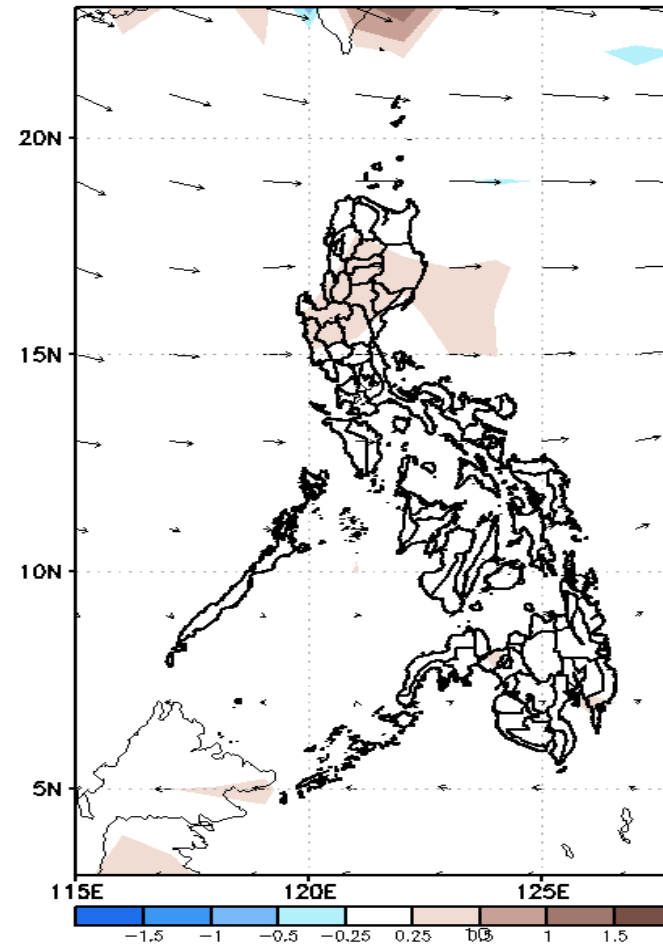
GEFS Week-2 Forecasts: Divergence & Wind Anomaly

Week 2: April 13- April 19, 2020

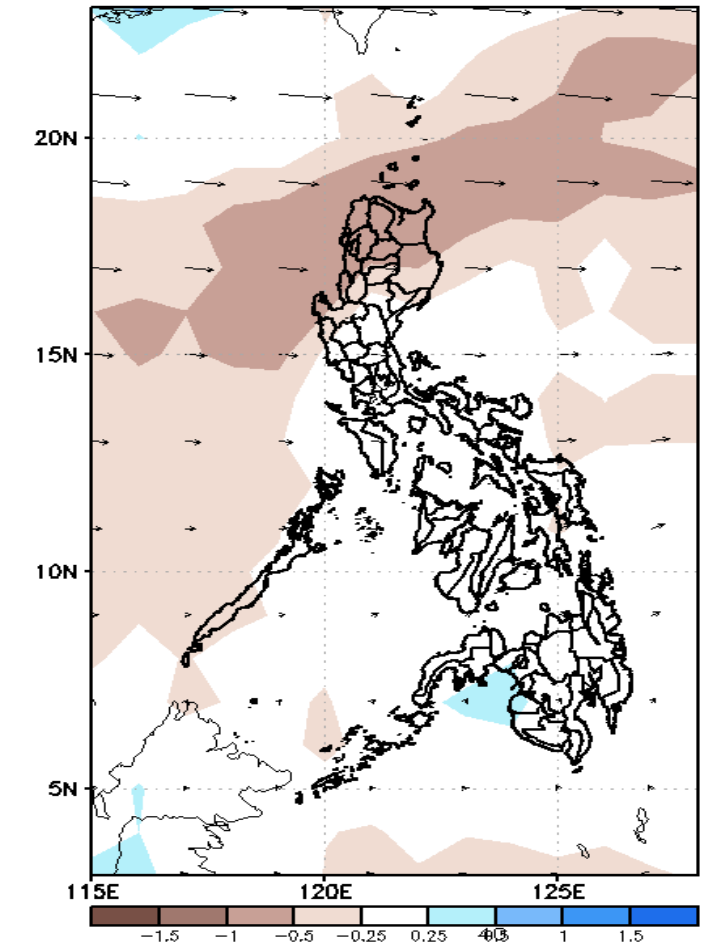
GEFS Week-2 850-hPa Divergence and Wind Anom
Valid: 20200413 - 20200419



GEFS Week-2 700-hPa Divergence and Wind Anom
Valid: 20200413 - 20200419



GEFS week-2 200-hPa Divergence and Wind Anom
Valid: 20200413 - 20200419

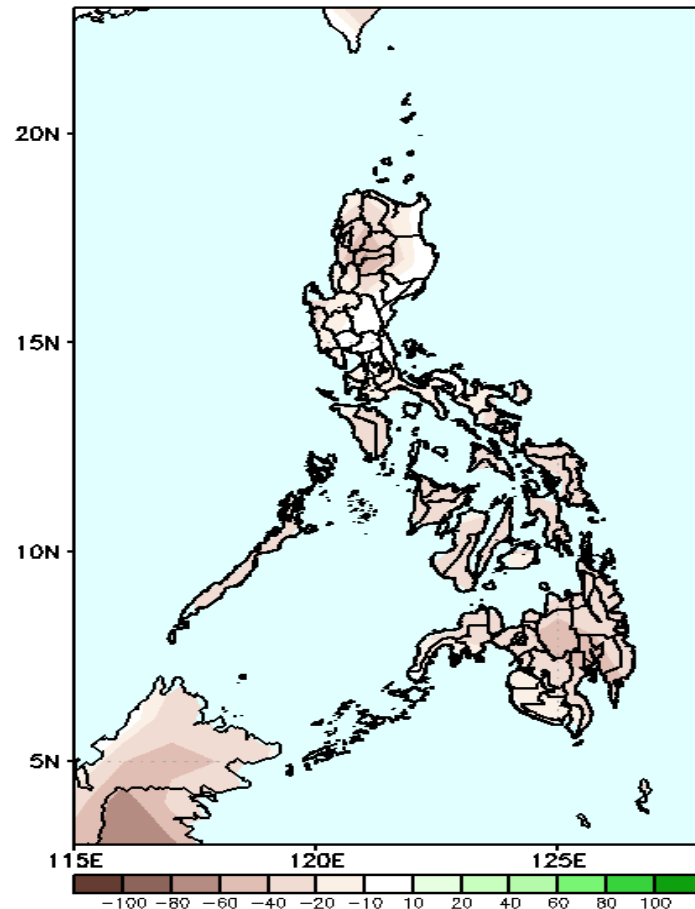


Low level (850 hPa) Divergence show likelihood of precipitation in some parts of northern and central Luzon and western Mindanao due to localized thunderstorm. Easterlies affecting most parts of the country during the forecast period.

Precipitation Anomaly and Exceedance Probability > 25/50 mm

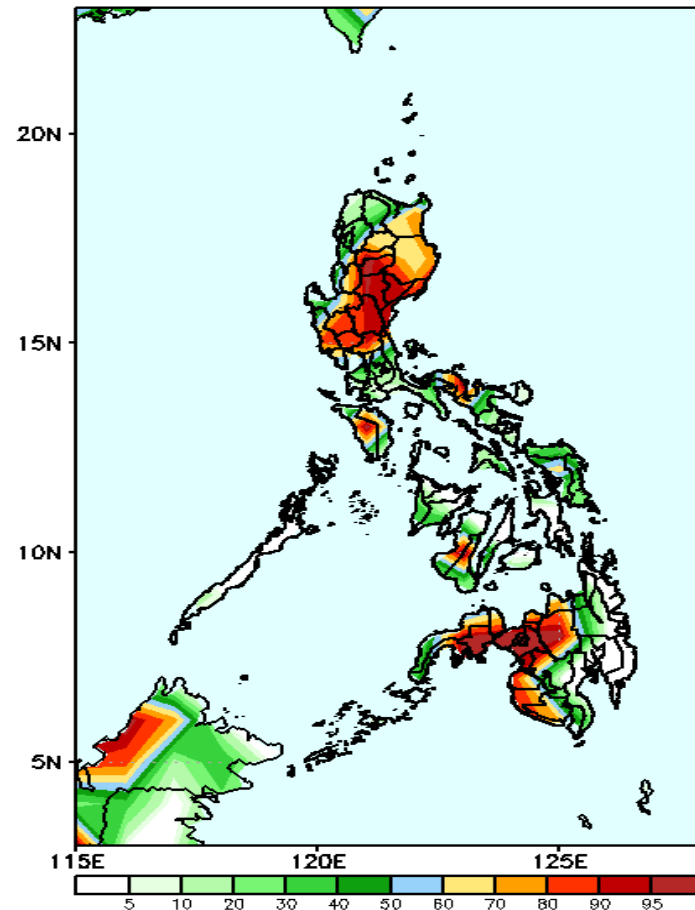
Week 2: April 13- April 19, 2020

GEFS Week-2 Precip Anomaly
Valid: 20200413 - 20200419



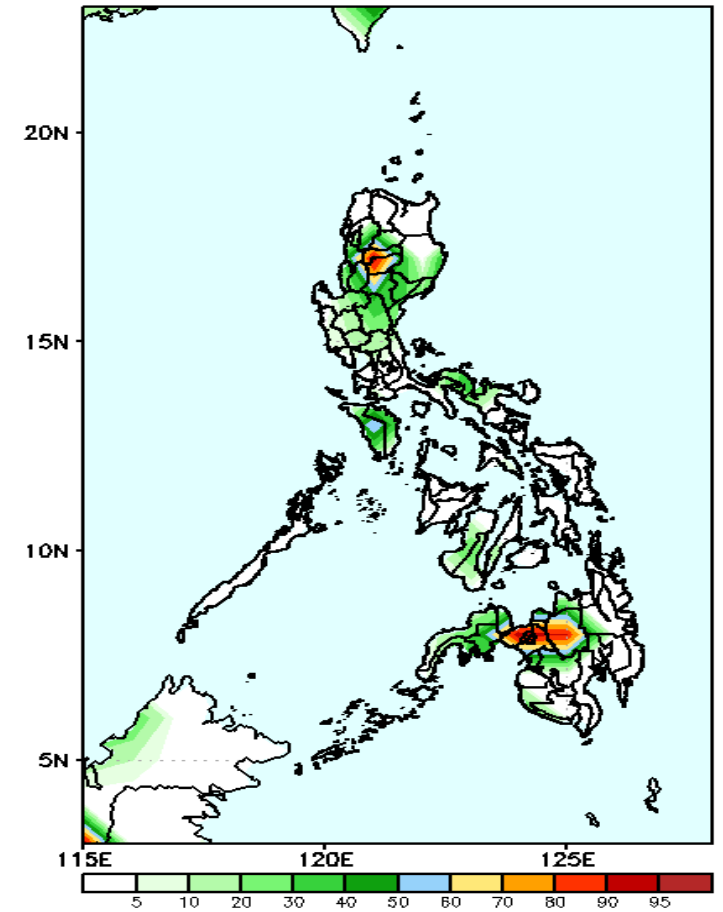
Rainfall deficit of 20-50mm is most likely in most parts of the country during the forecast period.

GEFS Week-2 Exceedance Prob. > 25mm
Valid: 20200413 - 20200419



High probability of rainfall to exceed 25mm in most parts of eastern and central Luzon, and western Mindanao while less likely for the rest of the country during the forecast period.

GEFS Week-2 Exceedance Prob. > 50mm
Valid: 20200413 - 20200419

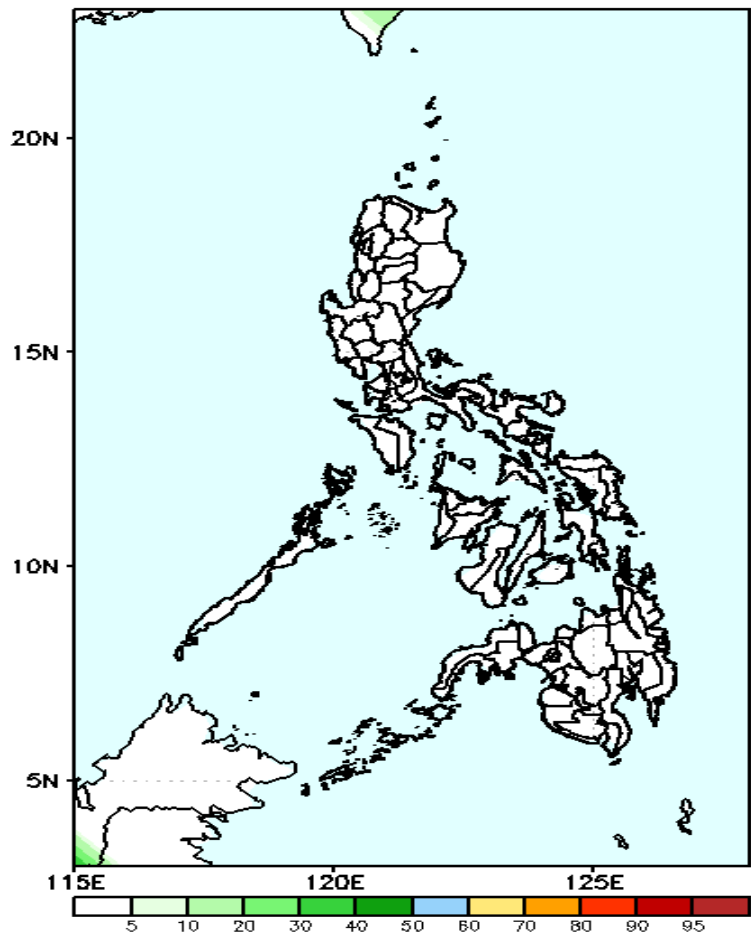


Less probability of rainfall to exceed 50mm in most parts of the country except in Isabela, Bukidnon and Lanao del Sur where there is 60-90% chance during the forecast period.

Exceedance Probability > 100/150/200 mm

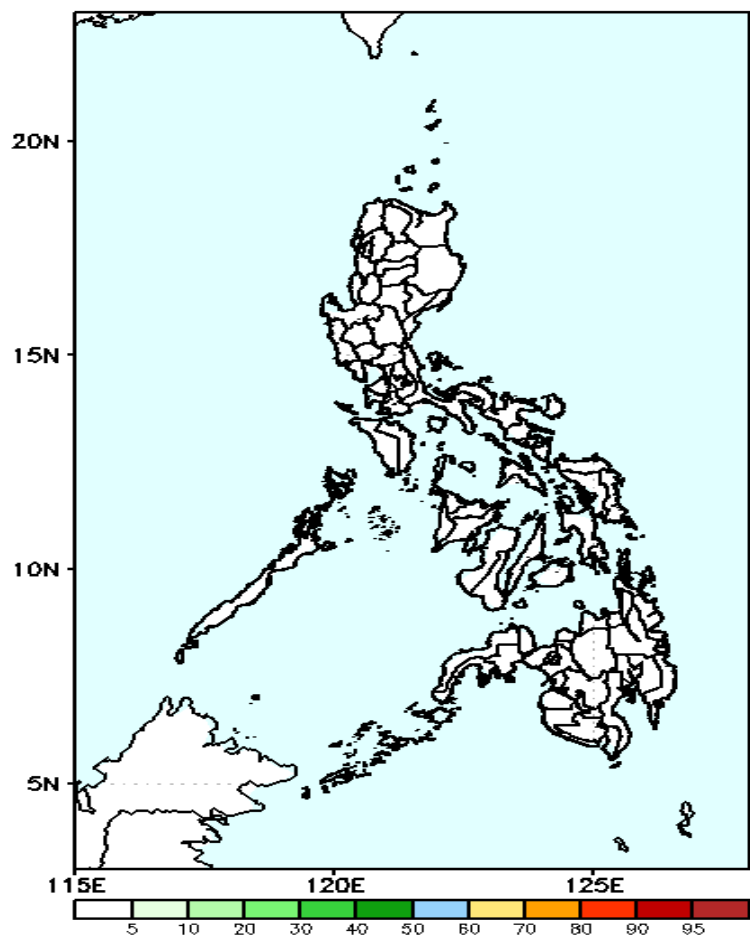
Week 2: April 13- April 19, 2020

GEFS Week-2 Exceedance Prob. > 100mm
Valid: 20200413 - 20200419



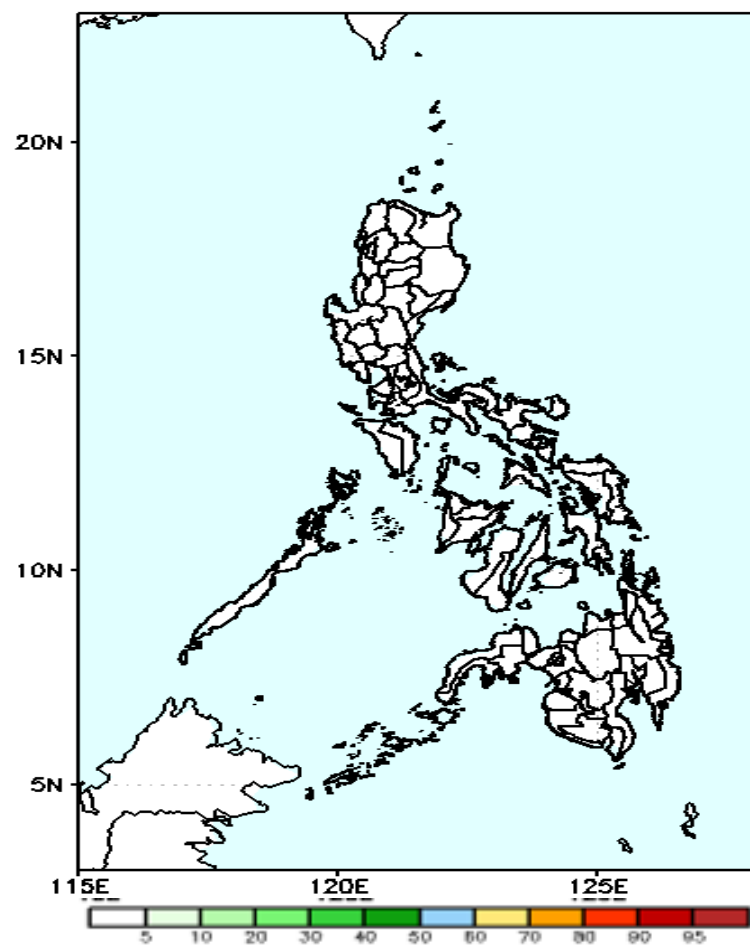
Less probability of rainfall to exceed 100mm in the whole country during the forecast period.

GEFS Week-2 Exceedance Prob. > 150mm
Valid: 20200413 - 20200419



Less probability of rainfall to exceed 150mm in the whole country during the forecast period.

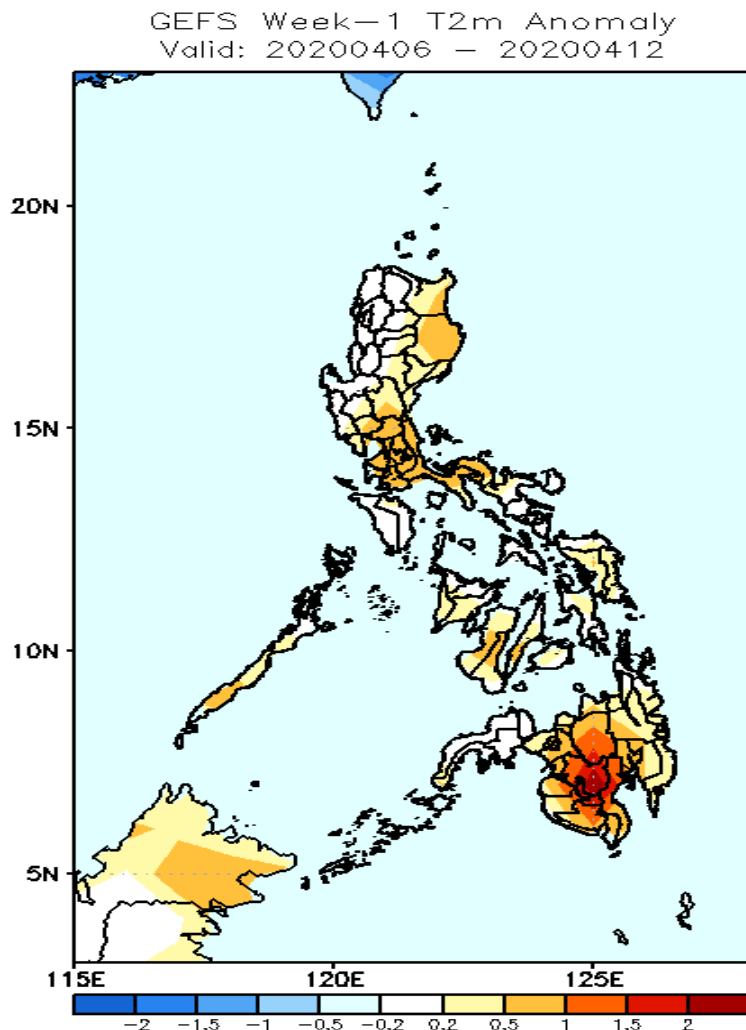
GEFS Week-2 Exceedance Prob. > 200mm
Valid: 20200413 - 20200419



Less probability of rainfall to exceed 200mm in the whole country during the forecast period.

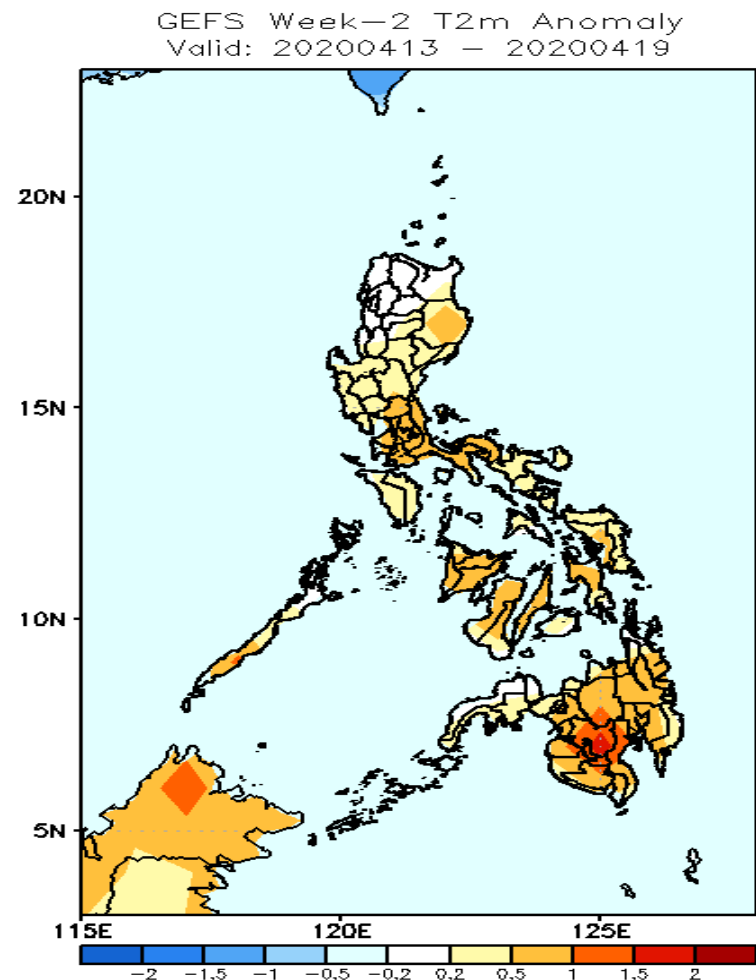


GEFS Week-1 & 2 Forecasts: T2m Anomaly



2m Temperature Week 1: April 06- April 12, 2020

Near to slightly warmer than average surface air temperature will likely experience in most parts of the country except in central Mindanao where warmer average surface air temperature is expected during the forecast period.



2m Temperature Week 2: April 13- April 19, 2020

Near to slightly warmer than average surface air temperature will likely experience in Luzon and Visayas while Mindanao will likely to have slightly warmer to warmer average surface air temperature during the forecast period.