



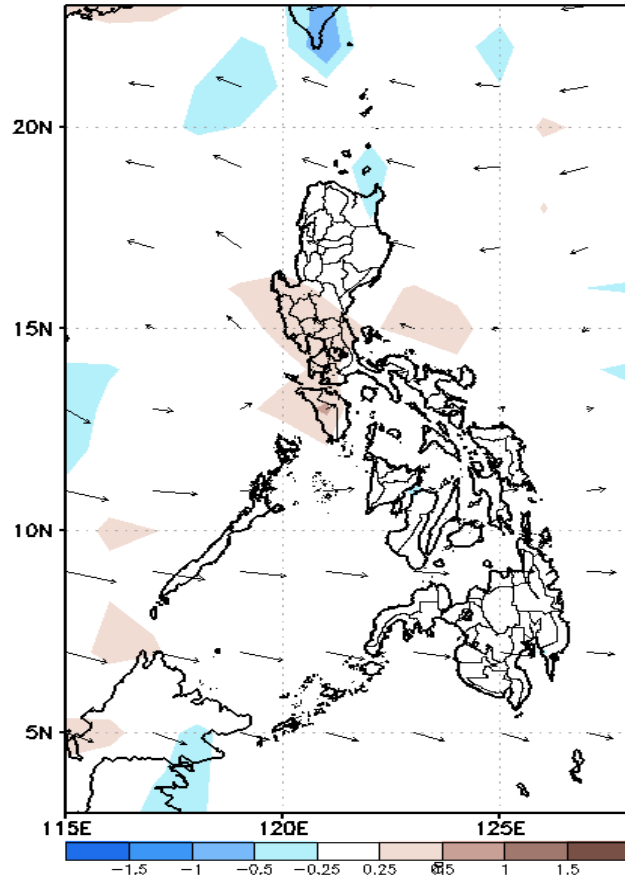
Week 1 & Week 2 Forecast for the Philippines using GEFS Model



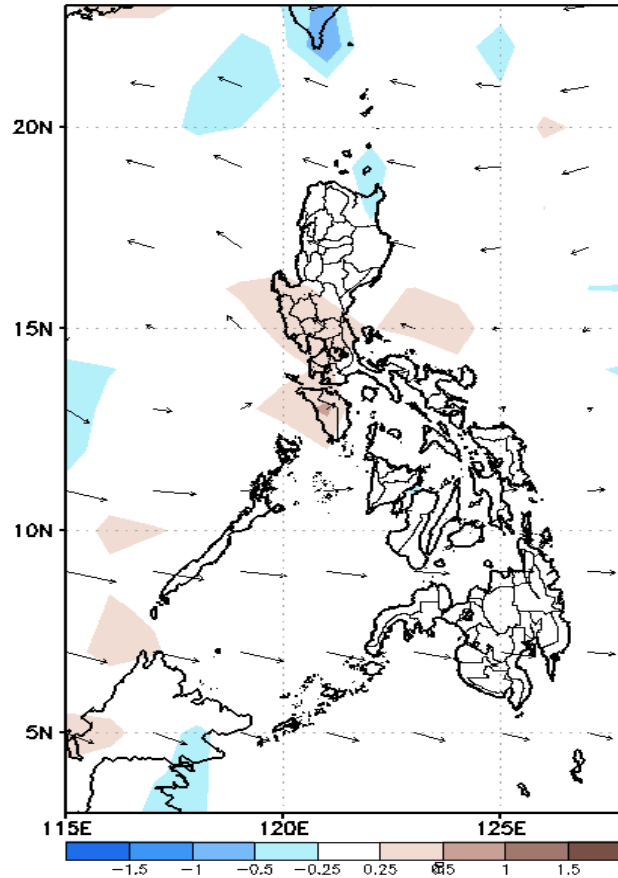
GEFS Week-1 Forecasts: Divergence & Wind Anomaly

Week 1: June 07-13, 2021

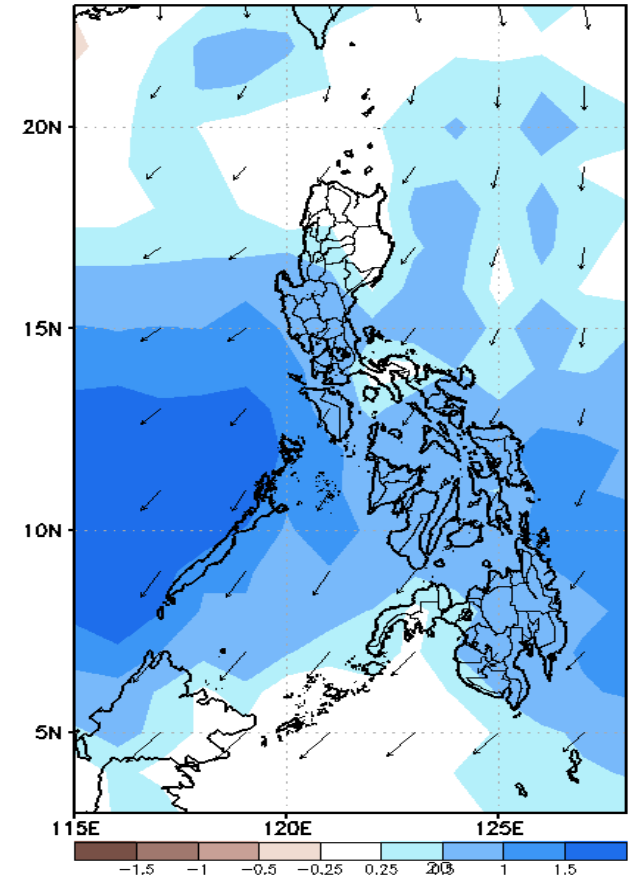
GEFS Week-1 850-hPa Divergence and Wind Anom
Valid: 20210607 - 20210613



GEFS Week-1 700-hPa Divergence and Wind Anom
Valid: 20210607 - 20210613



GEFS Week-1 200-hPa Divergence and Wind Anom
Valid: 20210607 - 20210613

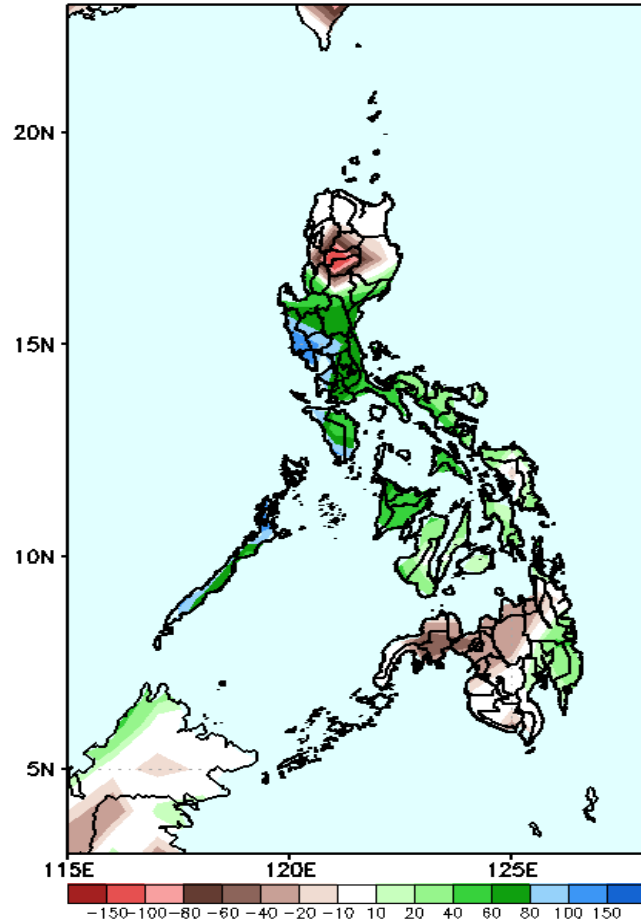


Upper and low level Divergence suggest likelihood of precipitation in most parts of the country except some parts of Northern Luzon. Southwest Monsoon affecting most parts of the country. Attributing to warm temperature and humid and wet environment during the forecast period.

Precipitation Anomaly and Exceedance Probability > 25/50 mm

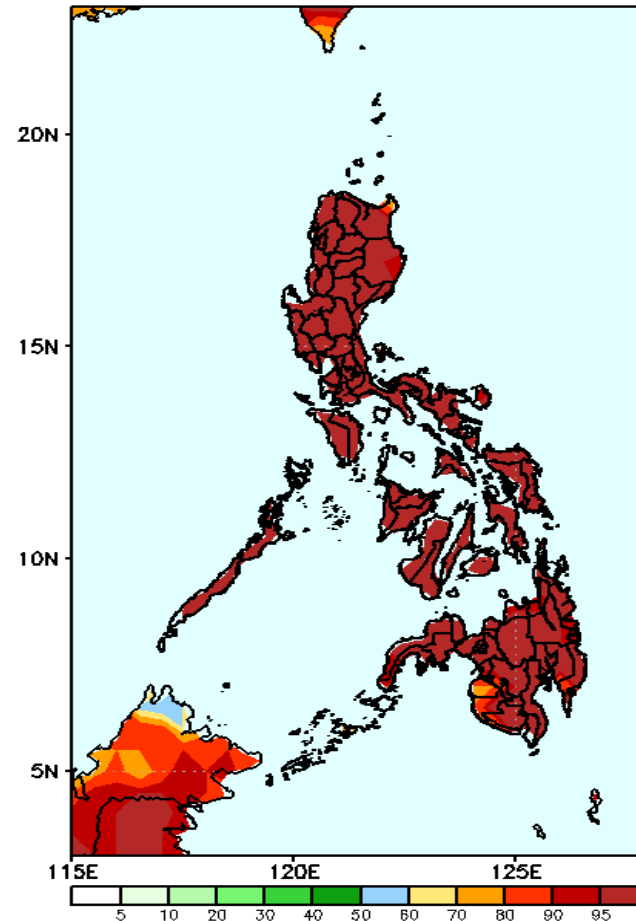
Week 1: June 07-13, 2021

GEFS Week-1 Precip. Anomaly
Valid: 20210607 – 20210613



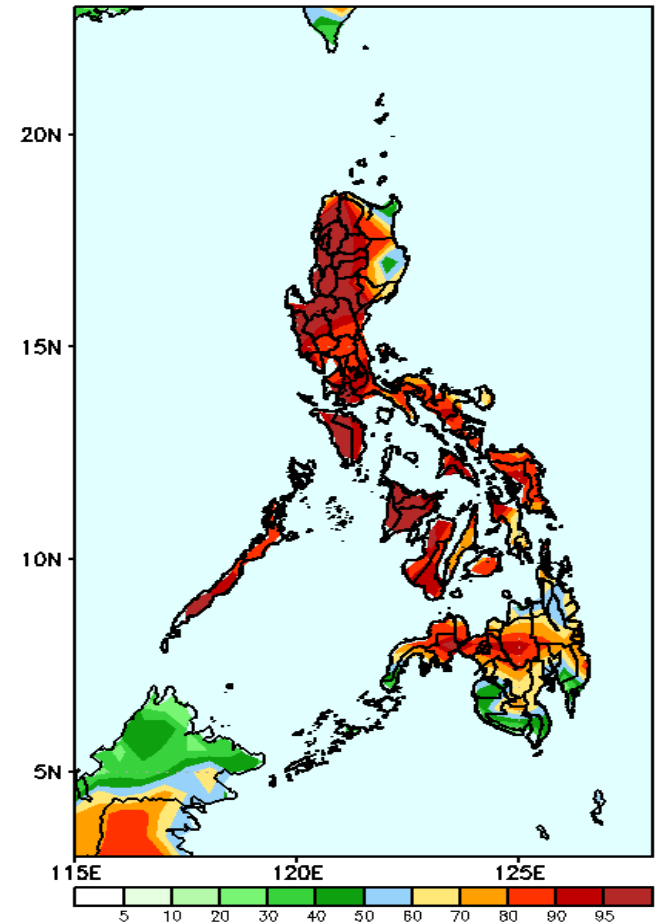
Rainfall deficit of up to 150mm is expected Mt. Province & Ifugao and 40-80mm in northern Mindanao & Zamboanga Peninsula while 40-100mm increase of rainfall for the rest of the country is more likely.

GEFS Week-1 Exceedance Prob. > 25mm
Valid: 20210607 – 20210613



High probability of rainfall to exceed 25mm in most parts of the country during the forecast period.

GEFS Week-1 Exceedance Prob. > 50mm
Valid: 20210607 – 20210613

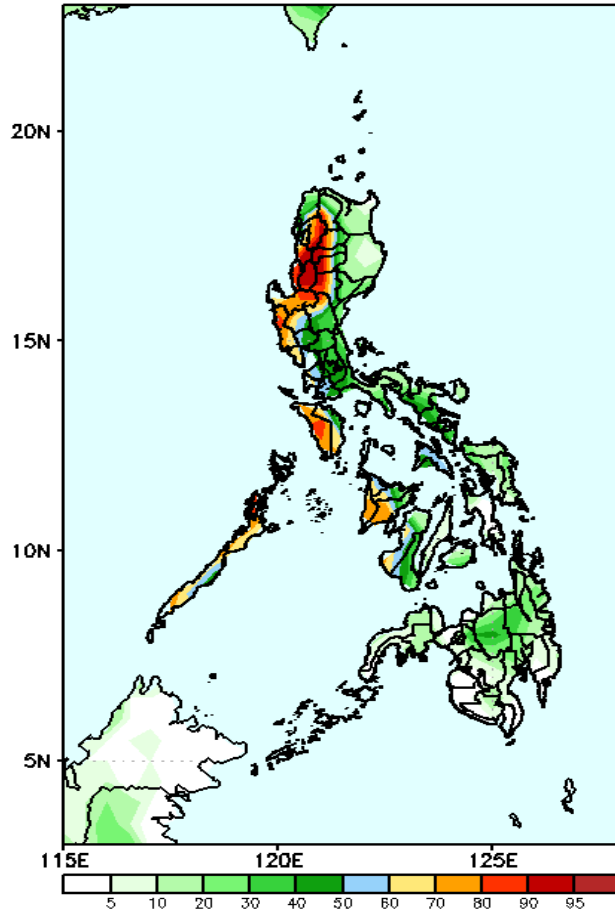


High probability of rainfall to exceed 50mm in most parts of the country except in southern parts of Mindanao during the forecast period.

Exceedance Probability > 100/150/200 mm

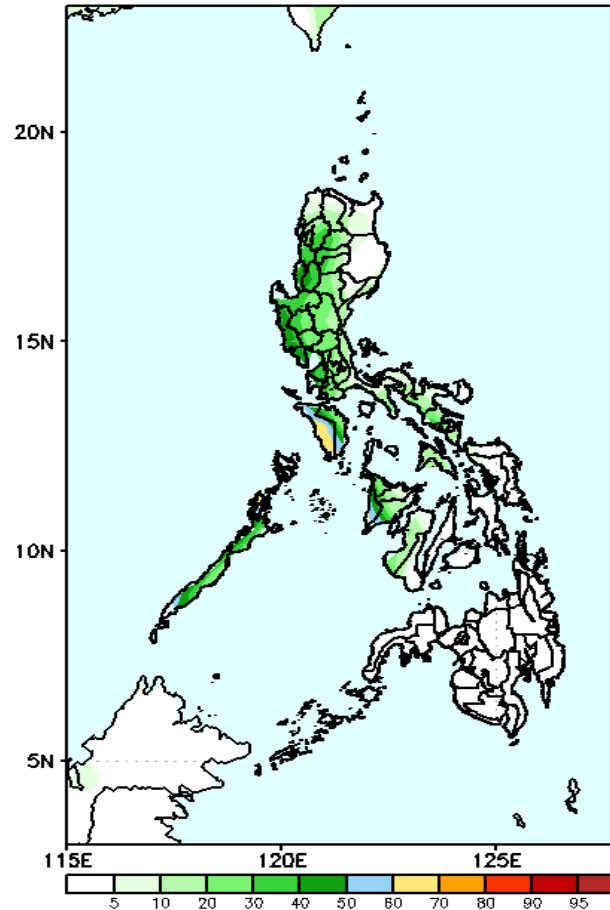
Week 1: June 07-13, 2021

GEFS Week-1 Exceedance Prob. > 100mm
Valid: 20210607 – 20210613



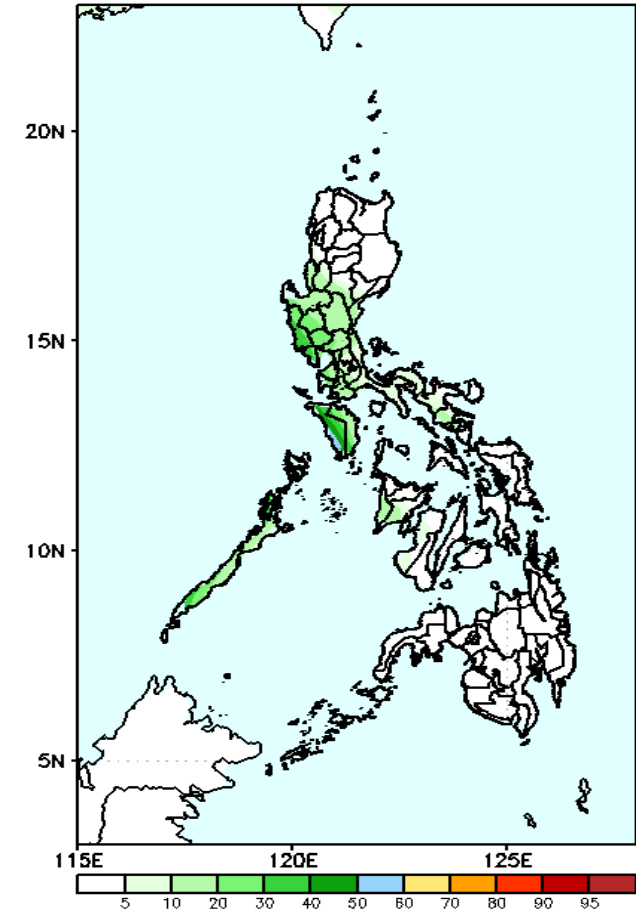
High probability of rainfall to exceed 100mm in most parts of Western Luzon and Panay Island while less likely for the rest of the country during the forecast period.

GEFS Week-1 Exceedance Prob. > 150mm
Valid: 20210607 – 20210613



Less probability of rainfall to exceed 150mm in most parts of the country during the forecast period.

GEFS Week-1 Exceedance Prob. > 200mm
Valid: 20210607 – 20210613

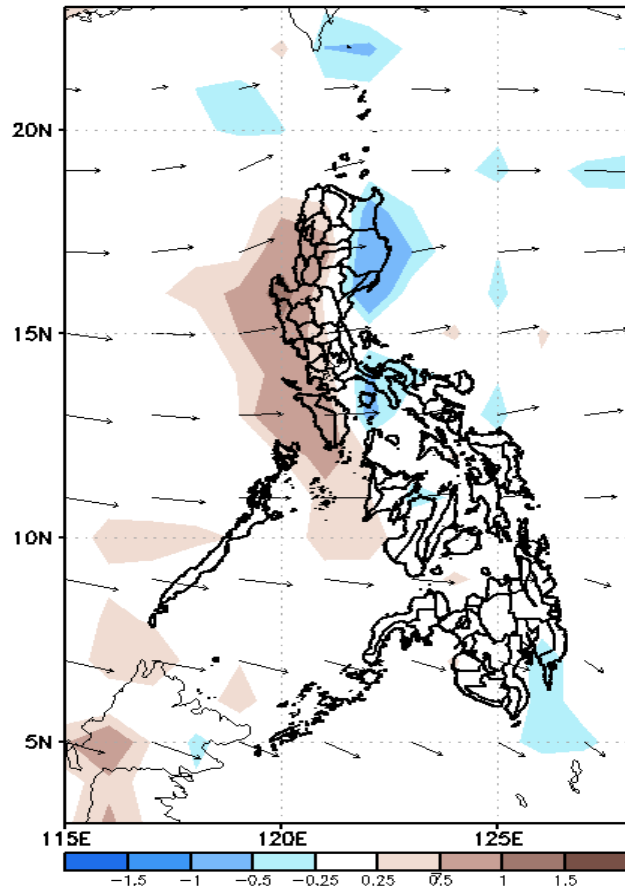


Less probability of rainfall to exceed 200mm in most parts of the country during the forecast period.

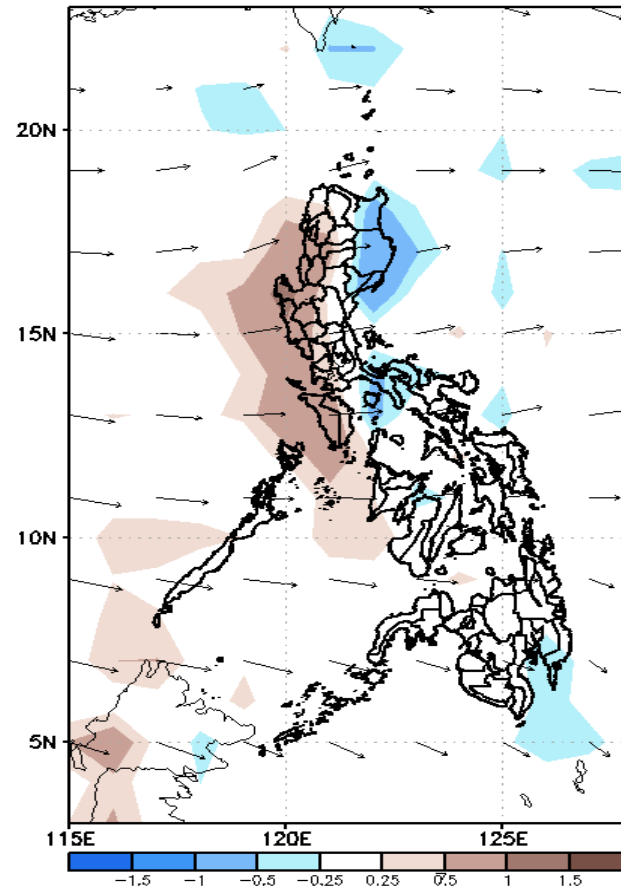
GEFS Week-2 Forecasts: Divergence & Wind Anomaly

Week 2: June 14-20, 2021

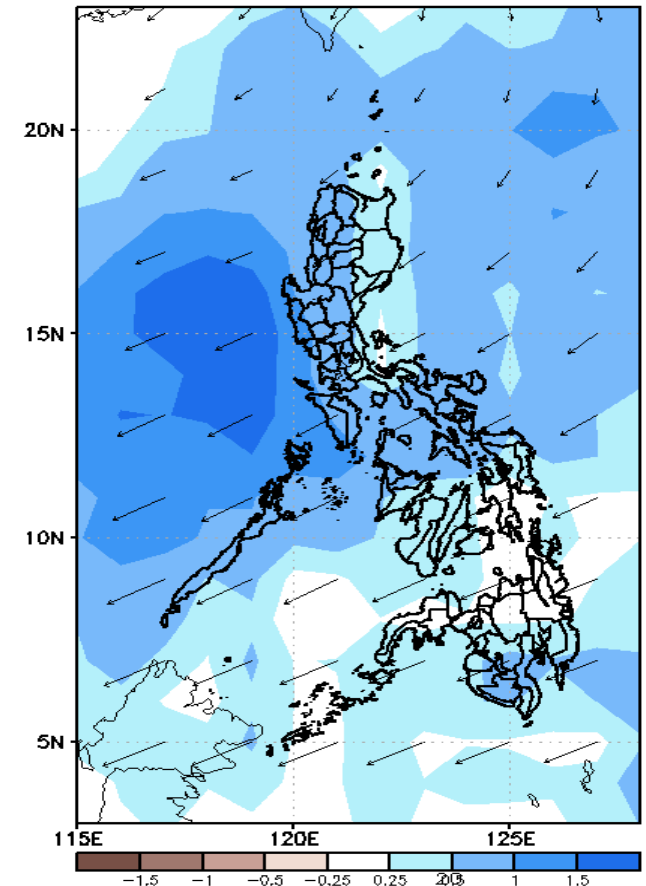
GEFS Week-2 850-hPa Divergence and Wind Anom
Valid: 20210614 - 20210620



GEFS Week-2 700-hPa Divergence and Wind Anom
Valid: 20210614 - 20210620



GEFS week-2 200-hPa Divergence and Wind Anom
Valid: 20210614 - 20210620

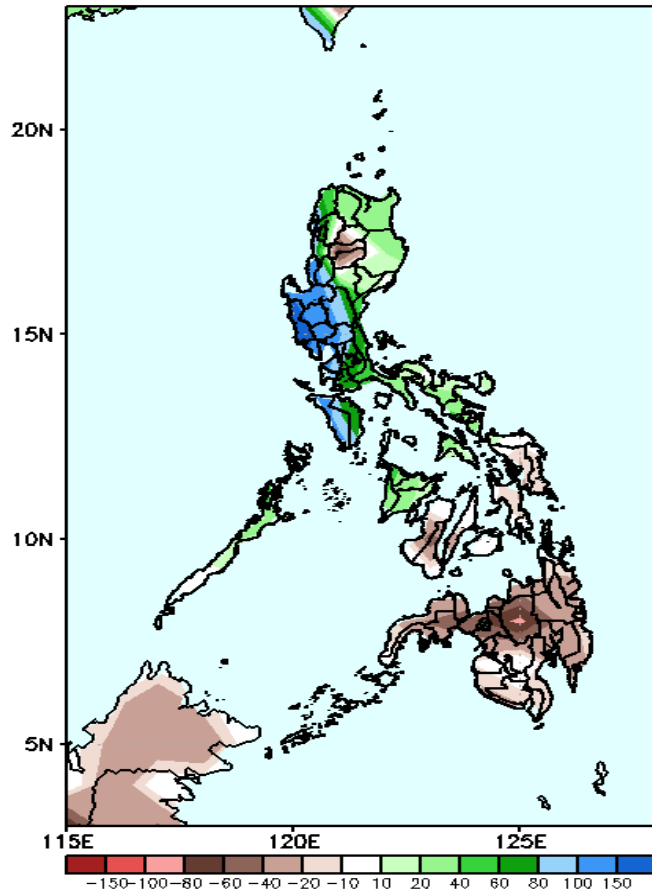


Upper and low level Divergence suggest likelihood of precipitation in most parts of the country. Southwest Monsoon affecting Luzon and Visayas. Westerlies affecting Mindanao. Attributing to warm temperature and humid and wet environment during the forecast period.

Precipitation Anomaly and Exceedance Probability > 25/50 mm

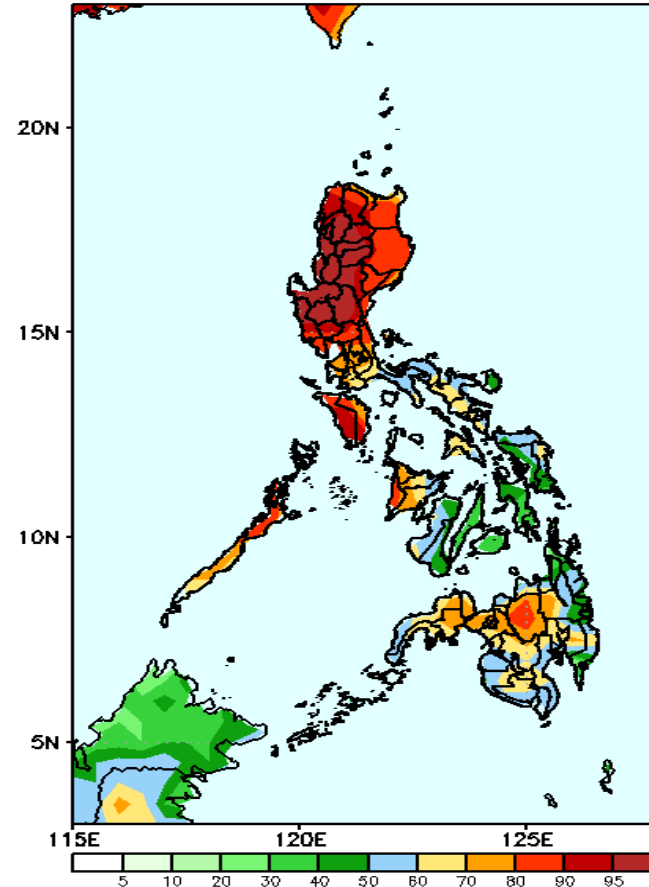
Week 2: June 14-20, 2021

GEFS Week-2 Precip Anomaly
Valid: 20210614 - 20210620



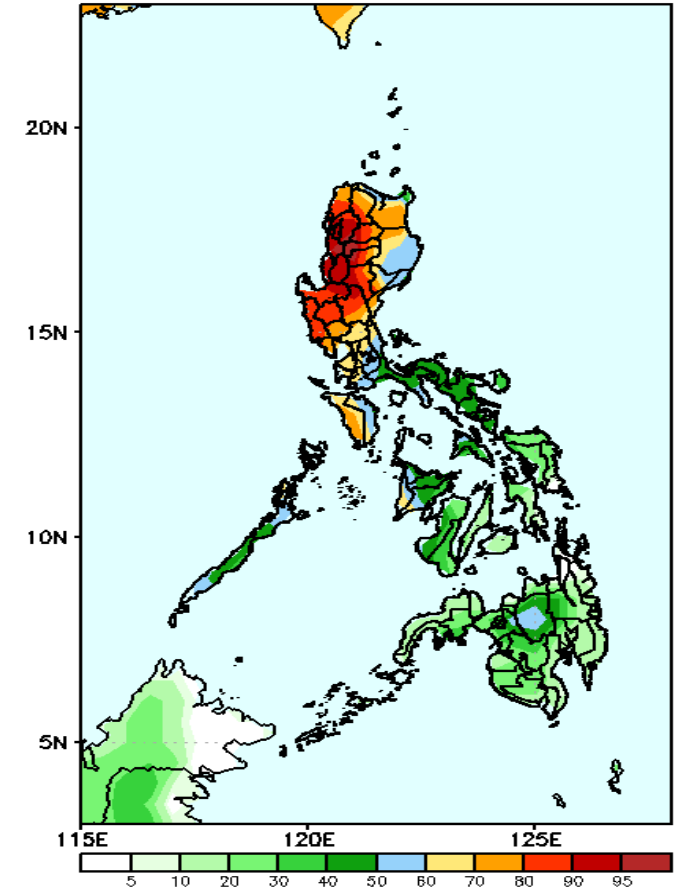
Increase of rainfall of up to 150mm in most parts of Central Luzon, Pangasinan & Mindoro and 40-80mm increase for the rest of Luzon and Panay Island. Rainfall deficit of 40-80mm in most parts of Visayas and Mindanao.

GEFS Week-2 Exceedance Prob. > 25mm
Valid: 20210614 - 20210620



High probability of rainfall to exceed 25mm in most parts of Luzon, Panay Island and most parts of Mindanao while less likely for the remaining parts of Visayas during the forecast period.

GEFS Week-2 Exceedance Prob. > 50mm
Valid: 20210614 - 20210620



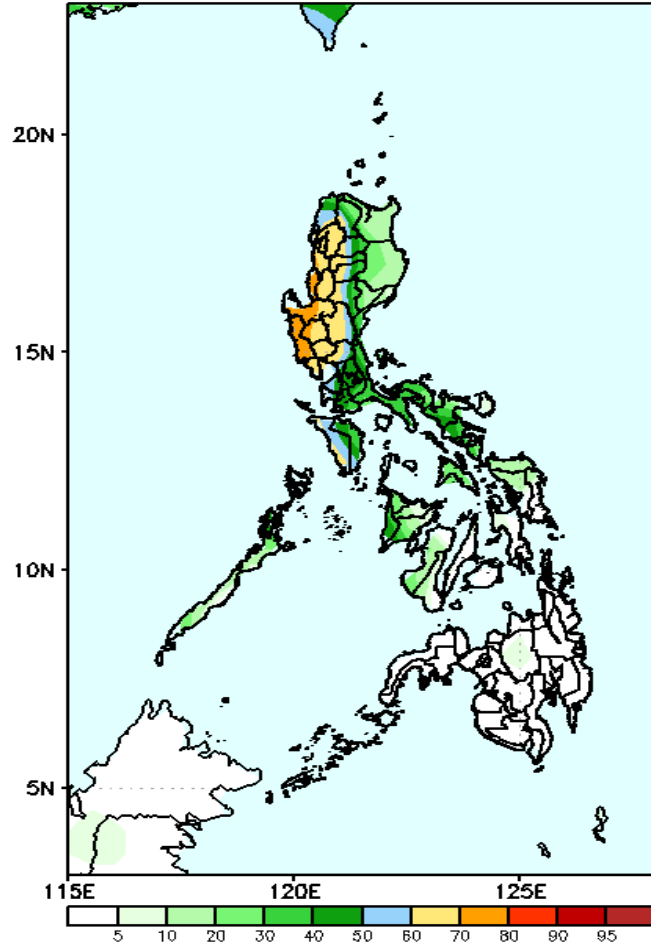
High probability of rainfall to exceed 50 mm in most parts of Luzon (except Bicol region and Palawan), while less likely for Visayas and Mindanao during the forecast period.



Exceedance Probability > 100/150/200 mm

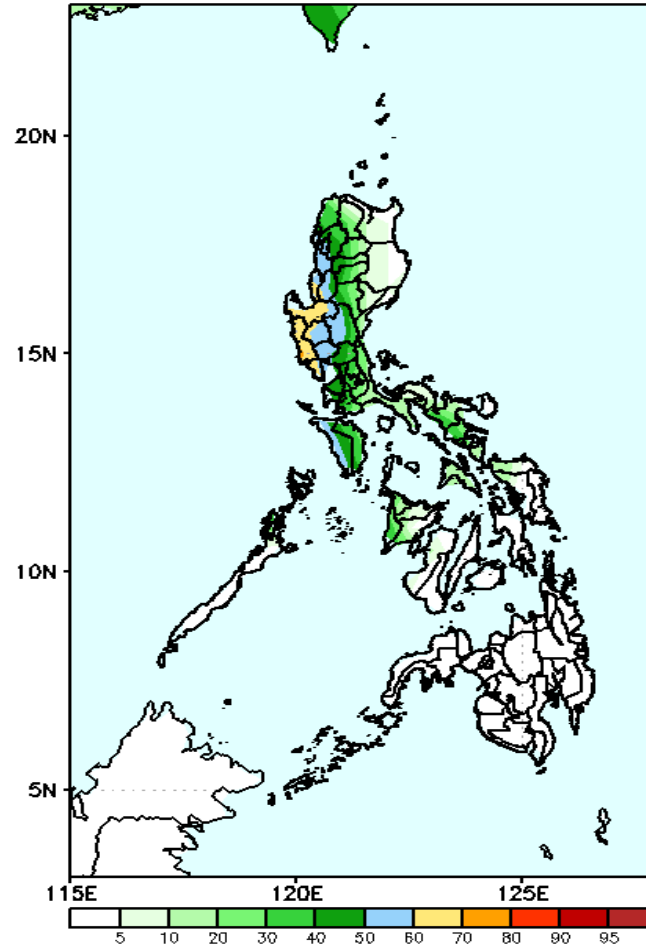
Week 2: June 14-20, 2021

GEFS Week-2 Exceedance Prob. > 100mm
Valid: 20210614 – 20210620



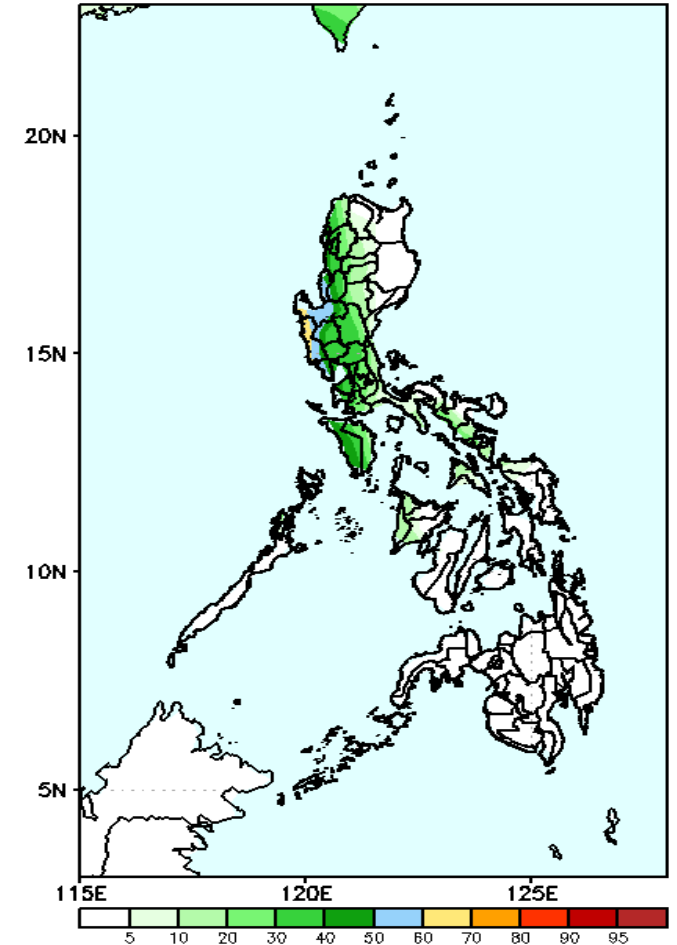
High probability of rainfall to exceed 100mm in most parts of Western Luzon while less likely for the rest of the country during the forecast period.

GEFS Week-2 Exceedance Prob. > 150mm
Valid: 20210614 – 20210620



Less probability of rainfall to exceed 150mm in most parts of the country during the forecast period.

GEFS Week-2 Exceedance Prob. > 200mm
Valid: 20210614 – 20210620

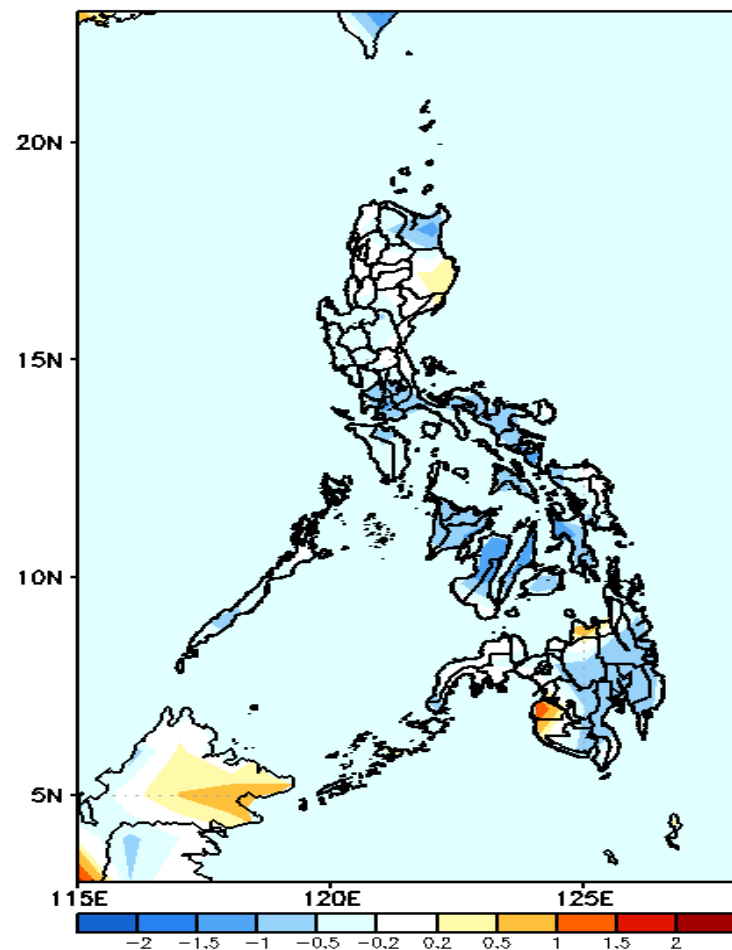


Less probability of rainfall to exceed 200mm in most parts of the country during the forecast period.



GEFS Week-1 & 2 Forecasts: T2m Anomaly

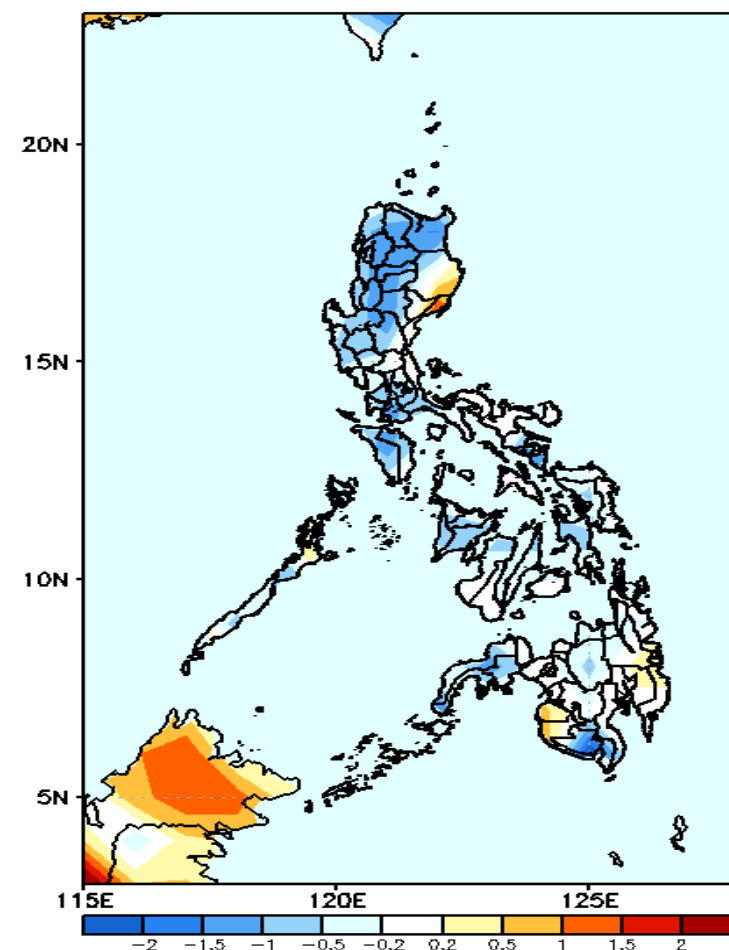
GEFS Week-1 T2m Anomaly
Valid: 20210607 – 20210613



2m Temperature Week 1: June 07-13, 2021

Average to slightly cooler than average surface air temperature will likely experience in most parts the country during the forecast period.

GEFS Week-2 T2m Anomaly
Valid: 20210614 – 20210620



2m Temperature Week 2: June 14-20, 2021

Slightly cooler to cooler than average surface air temperature will likely experience in most parts of the country during the forecast period.

