



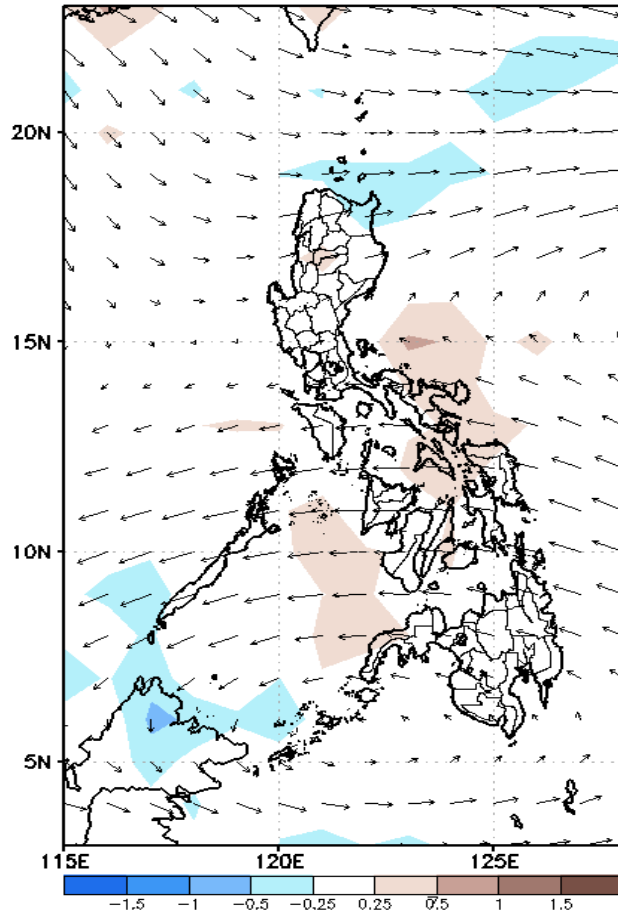
Week 1 & Week 2 Forecast for the Philippines using GEFS Model



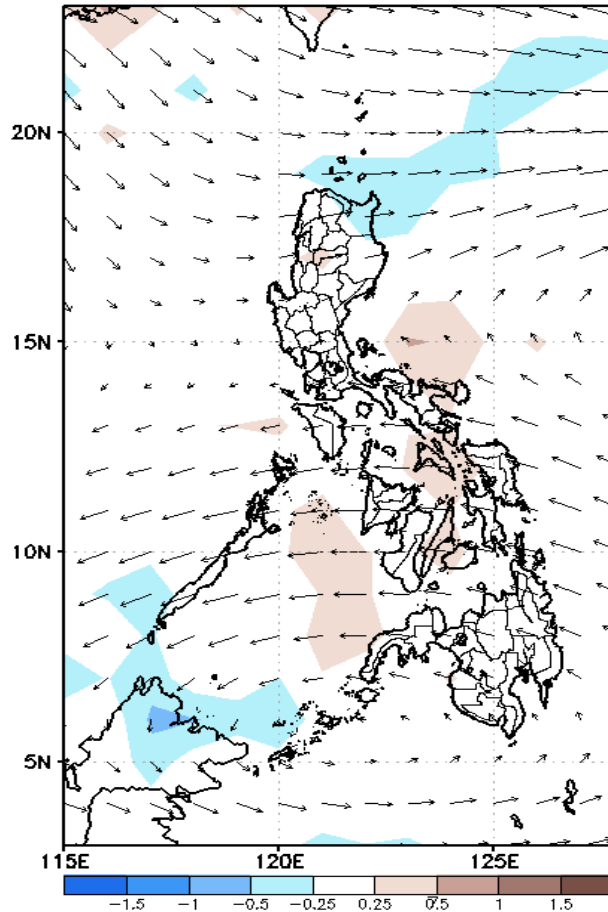
GEFS Week-1 Forecasts: Divergence & Wind Anomaly

Week 1: Mar 07-13, 2022

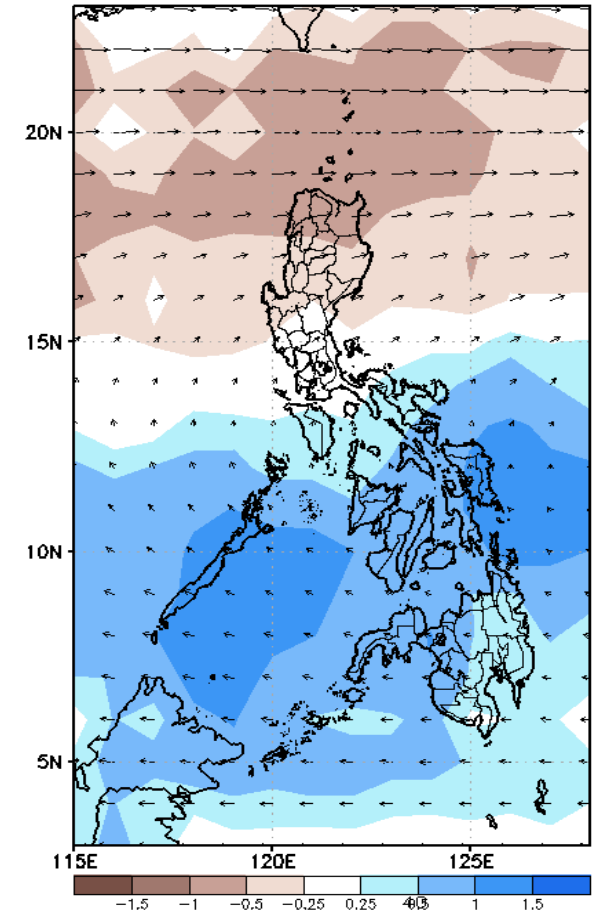
GEFS Week-1 850-hPa Divergence and Wind Anom
Valid: 20220307 - 20220313



GEFS Week-1 700-hPa Divergence and Wind Anom
Valid: 20220307 - 20220313



GEFS Week-1 200-hPa Divergence and Wind Anom
Valid: 20220307 - 20220313

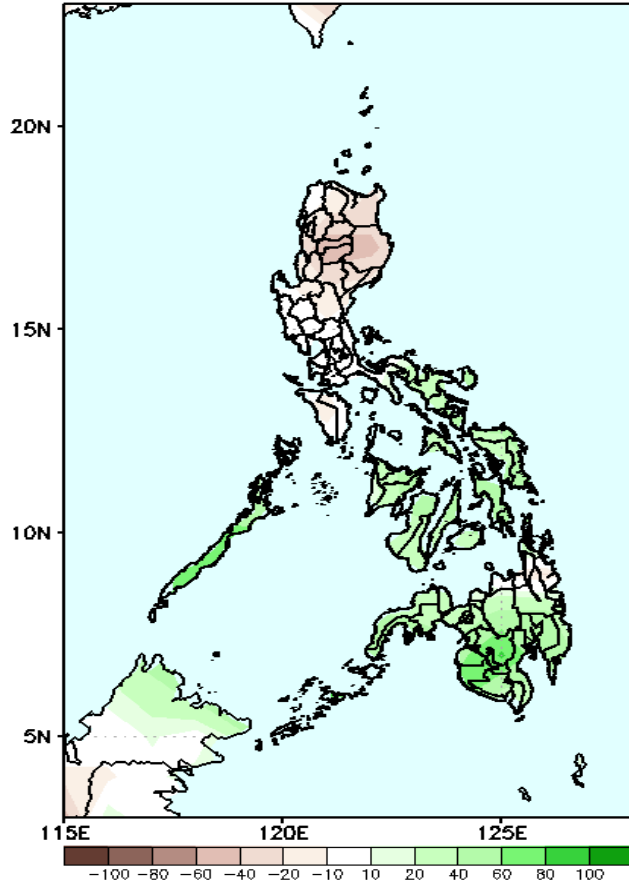


Upper and low level Divergence suggest a likelihood of light to moderate precipitation in some parts of Southern Luzon and most parts of Visayas and Mindanao. Northeast Monsoon affecting some parts of Northern Luzon while Easterlies affecting most parts of the country during the forecast period.

Precipitation Anomaly and Exceedance Probability > 25/50 mm

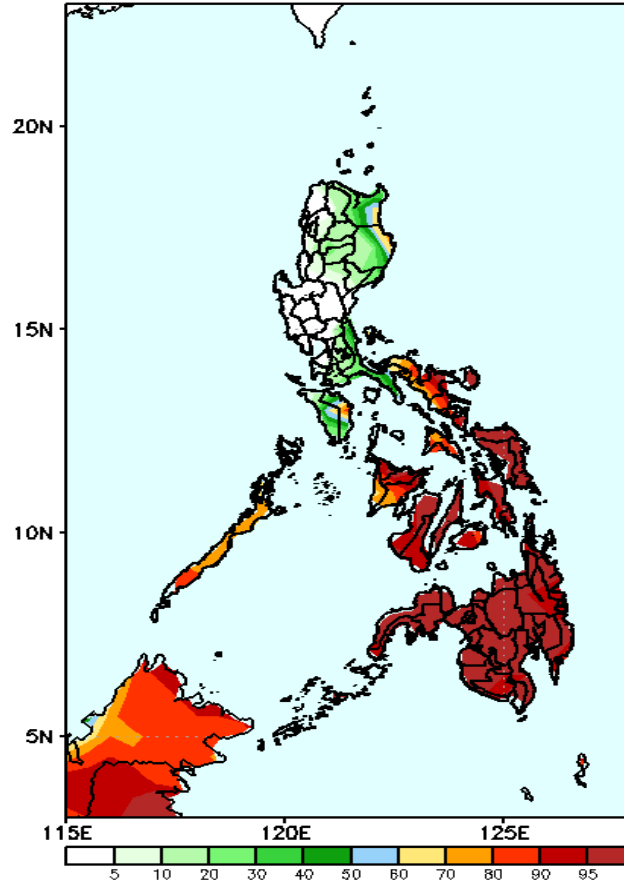
Week 1: Mar 07-13, 2022

GEFS Week-1 Precip Anomaly
Valid: 20220307 - 20220313



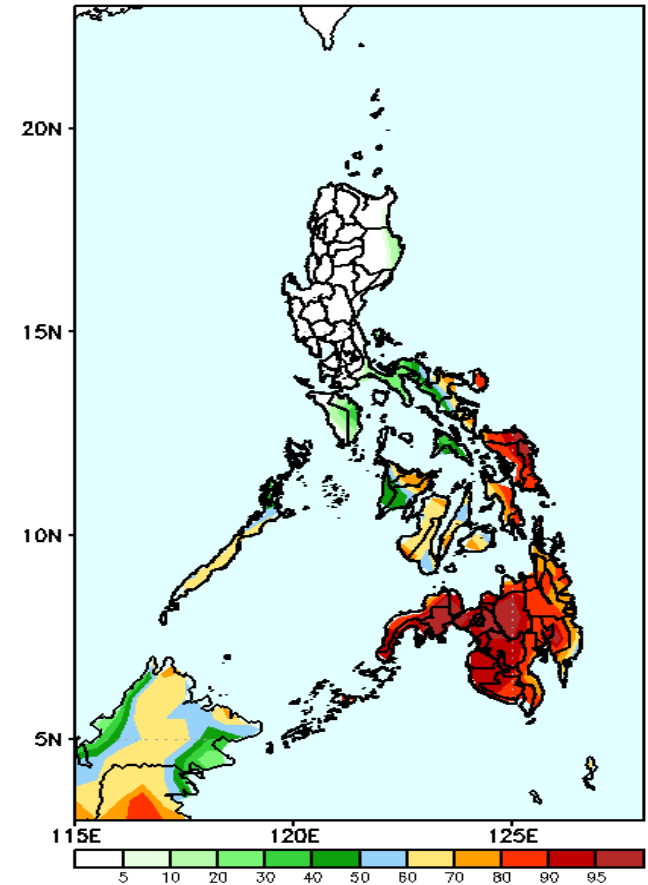
Rainfall deficit of 10-40mm is expected in most parts of Luzon while 40-100mm. increase of rainfall in Visayas and Mindanao during the forecast period.

GEFS Week-1 Exceedance Prob. > 25mm
Valid: 20220307 - 20220313



High probability of rainfall to exceed 25mm in most parts of Bicol Region, Palawan and in Visayas and Mindanao while less likely for the rest of Luzon during the forecast period.

GEFS Week-1 Exceedance Prob. > 50mm
Valid: 20220307 - 20220313



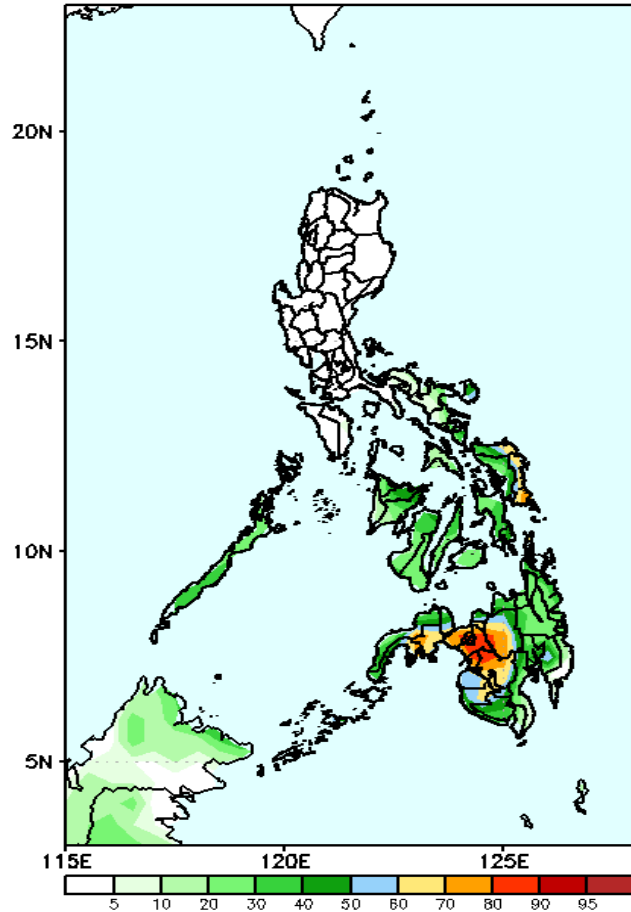
70-100% probability of rainfall to exceed 50mm in Bicol Region and most parts of Visayas and Mindanao while less likely for the rest of Luzon during the forecast period.



Exceedance Probability > 100/150/200 mm

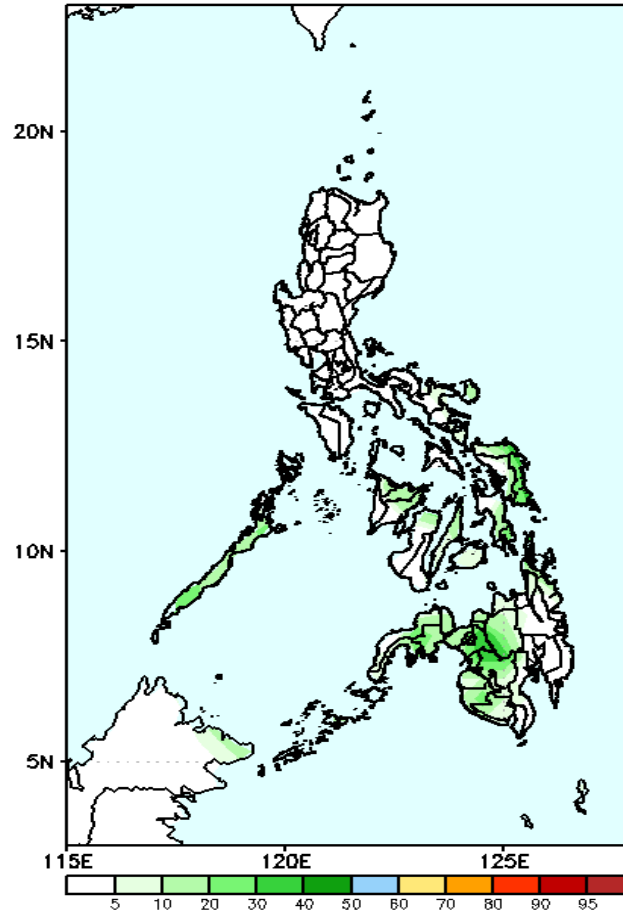
Week 1: Mar 07-13, 2022

GEFS Week-1 Exceedance Prob. > 100mm
Valid: 20220307 – 20220313



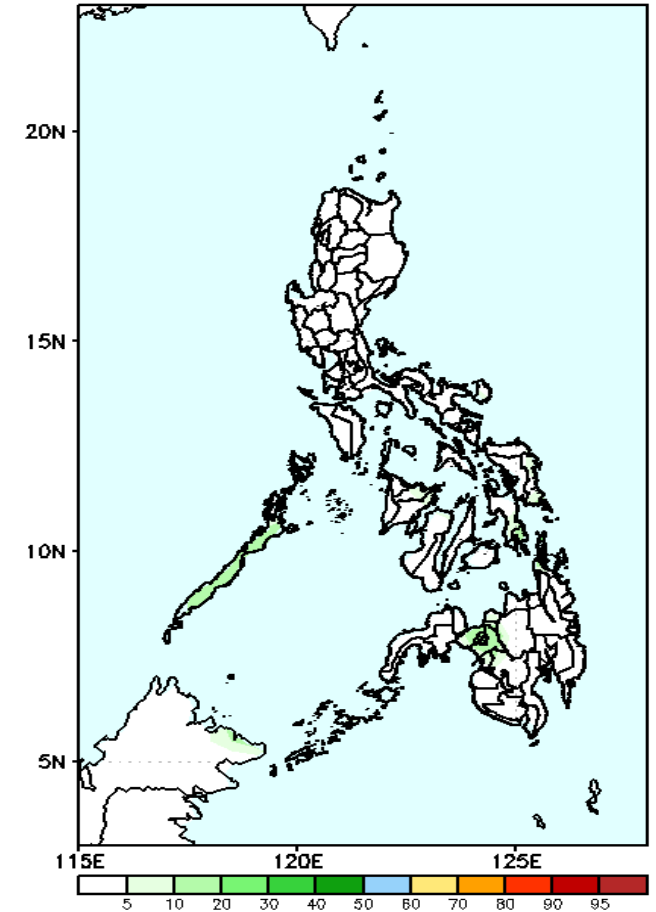
Low probability of rainfall to exceed 100mm in most parts of the country except in Eastern Samar, Zamboanga Del Sur, Lanao Provinces, Bukidnon and North Cotabato where there is 60-95% chance during the forecast period.

GEFS Week-1 Exceedance Prob. > 150mm
Valid: 20220307 – 20220313



Low probability of rainfall to exceed 150mm in most parts of the country during the forecast period.

GEFS Week-1 Exceedance Prob. > 200mm
Valid: 20220307 – 20220313



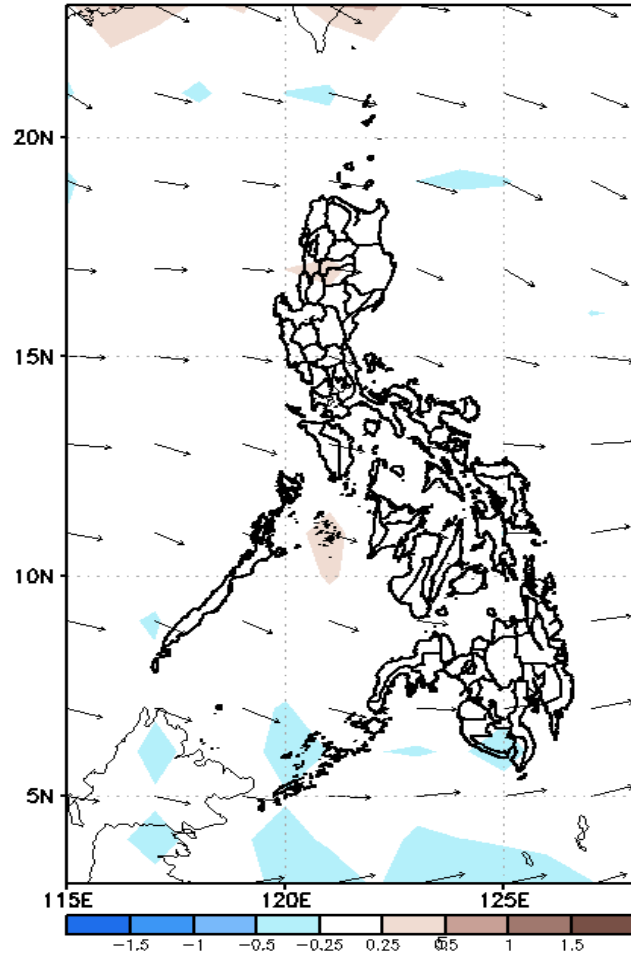
Low probability of rainfall to exceed 200mm in most parts of the country during the forecast period.



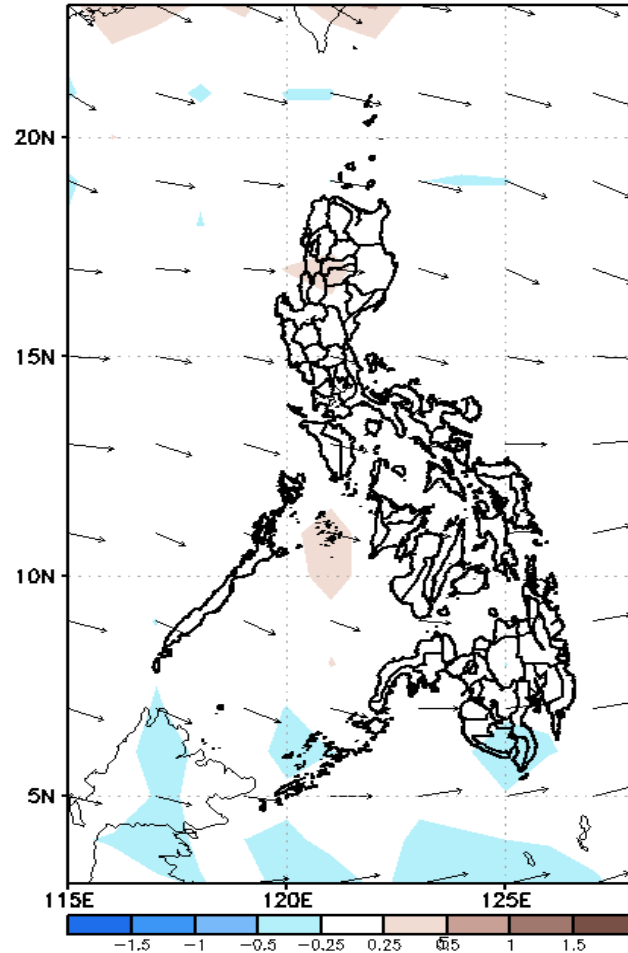
GEFS Week-2 Forecasts: Divergence & Wind Anomaly

Week 2: Mar 14-20, 2022

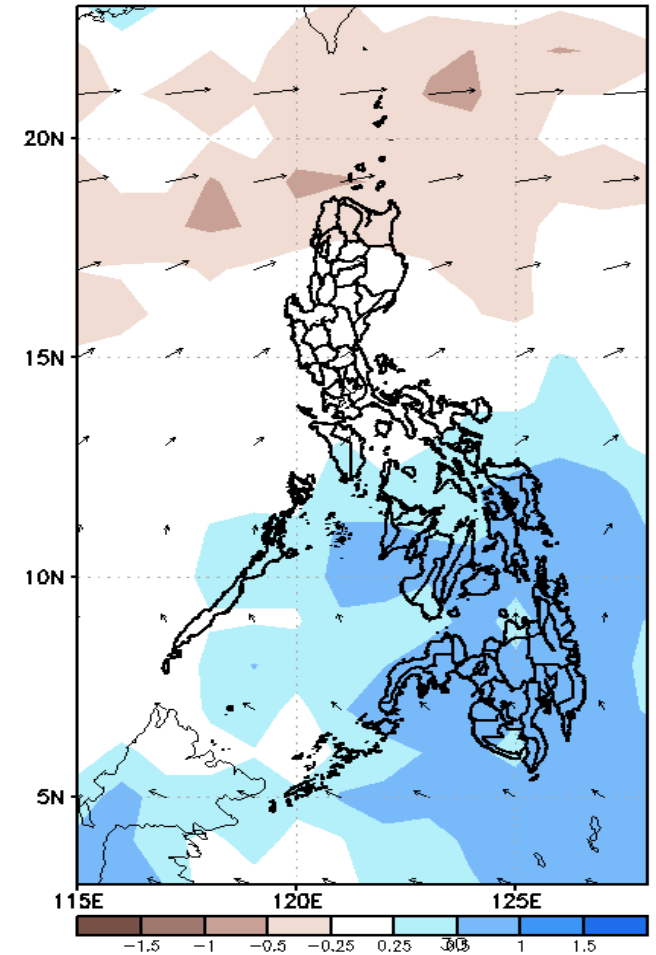
GEFS Week-2 850-hPa Divergence and Wind Anom
Valid: 20220314 - 20220320



GEFS Week-2 700-hPa Divergence and Wind Anom
Valid: 20220314 - 20220320



GEFS week-2 200-hPa Divergence and Wind Anom
Valid: 20220314 - 20220320

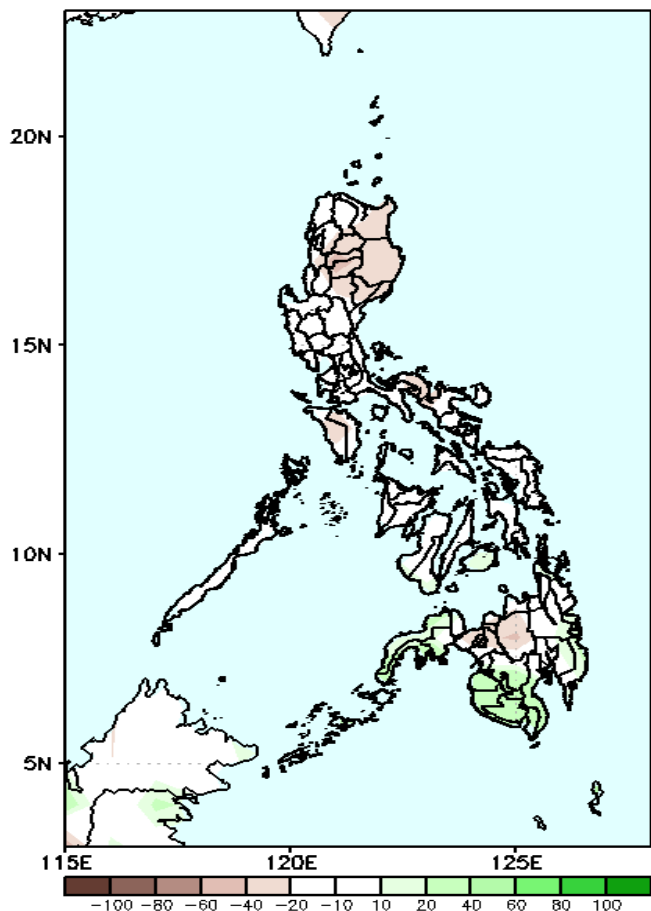


Upper and low level Divergence suggest a likelihood of light to moderate precipitation in some parts of Southern Luzon and most parts of Visayas and Mindanao. Easterlies affecting most parts of the country during the forecast period.

Precipitation Anomaly and Exceedance Probability > 25/50 mm

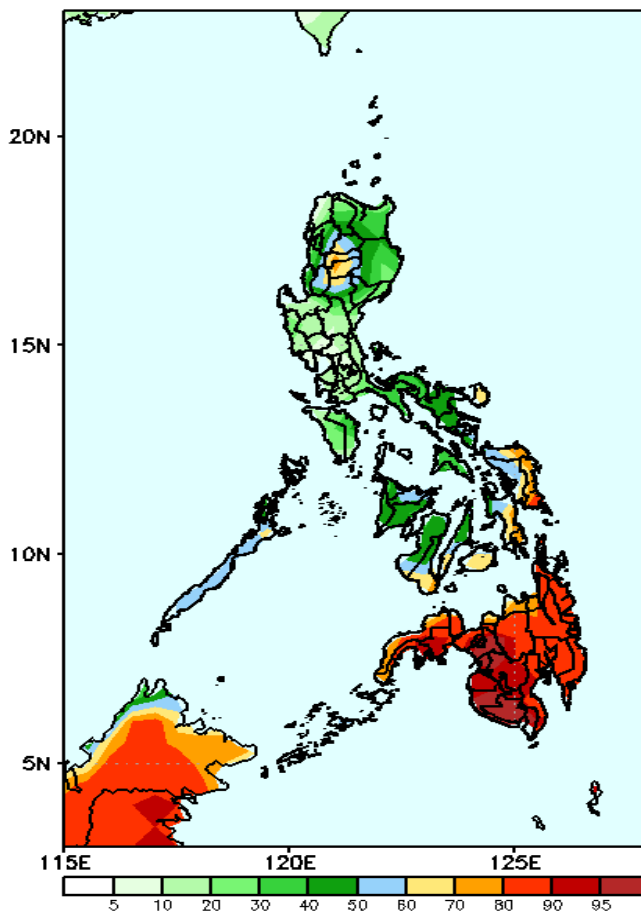
Week 2: Mar 14-20, 2022

GEFS Week-2 Precip Anomaly
Valid: 20220314 - 20220320



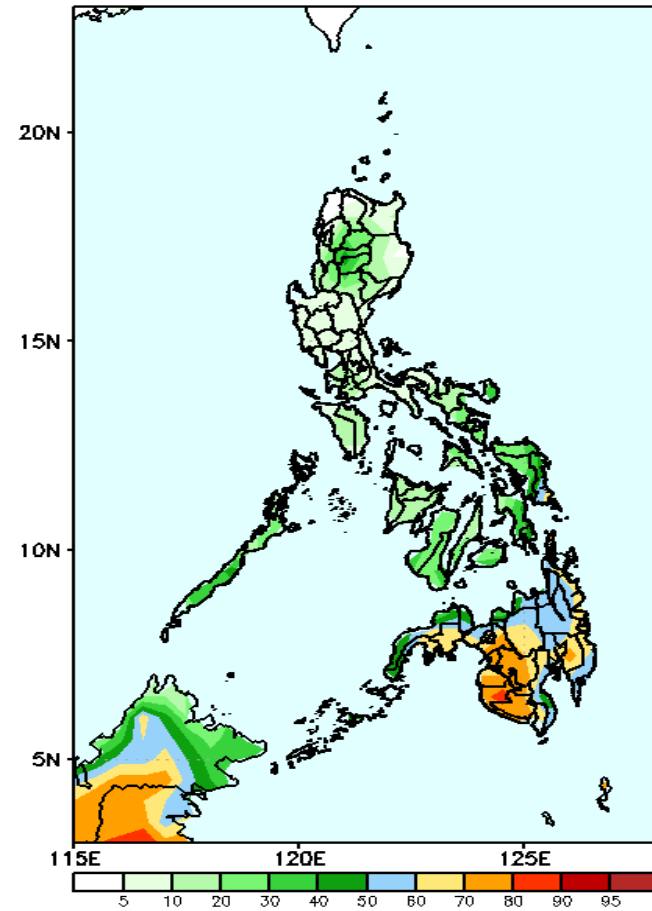
Rainfall deficit of 10-40mm in most parts of the country is expected except in southwestern Mindanao where there is 20-50mm. increase of rainfall during the forecast period.

GEFS Week-2 Exceedance Prob. > 25mm
Valid: 20220314 - 20220320



High probability of rainfall to exceed 25mm in Eastern Visayas & Mindanao while 50-80% chance for the rest of the country during the forecast period.

GEFS Week-2 Exceedance Prob. > 50mm
Valid: 20220314 - 20220320

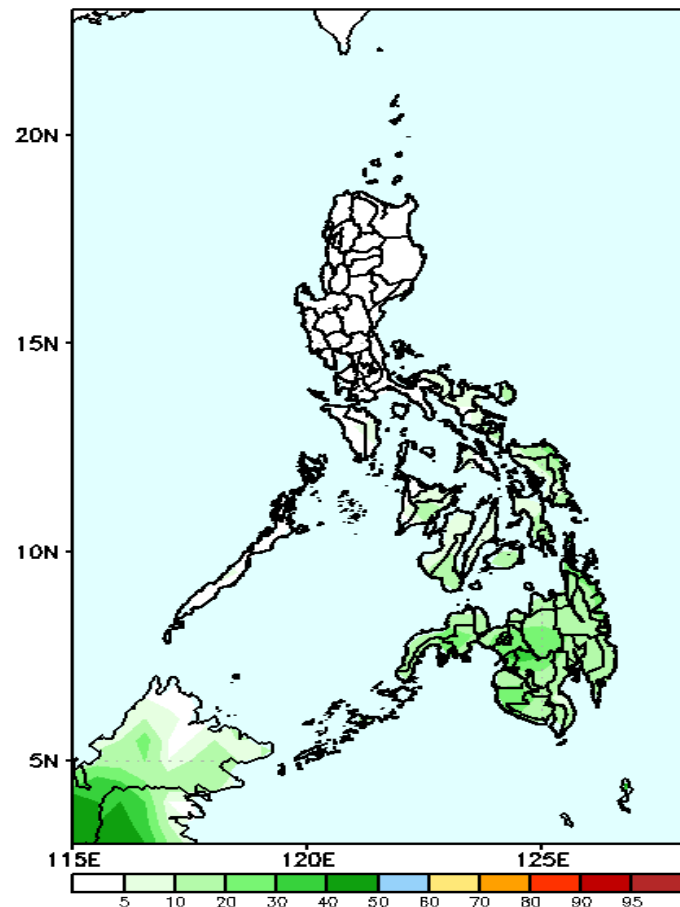


60-85% probability of rainfall to exceed 50mm in most parts of Mindanao while less likely for the rest of the country during the forecast period

Exceedance Probability > 100/150/200 mm

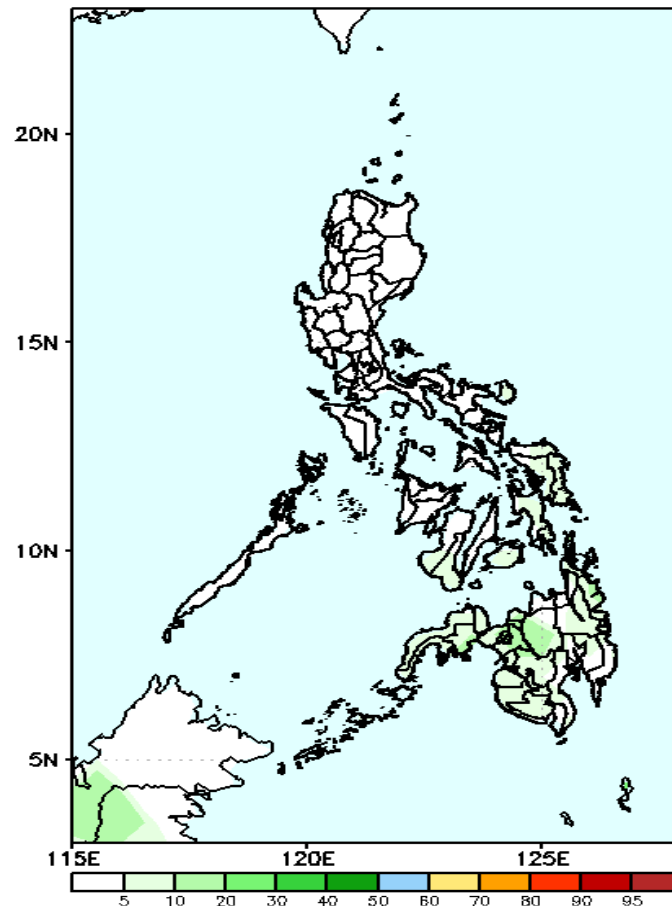
Week 2: Mar 14-20, 2022

GEFS Week-2 Exceedance Prob. > 100mm
Valid: 20220314 - 20220320



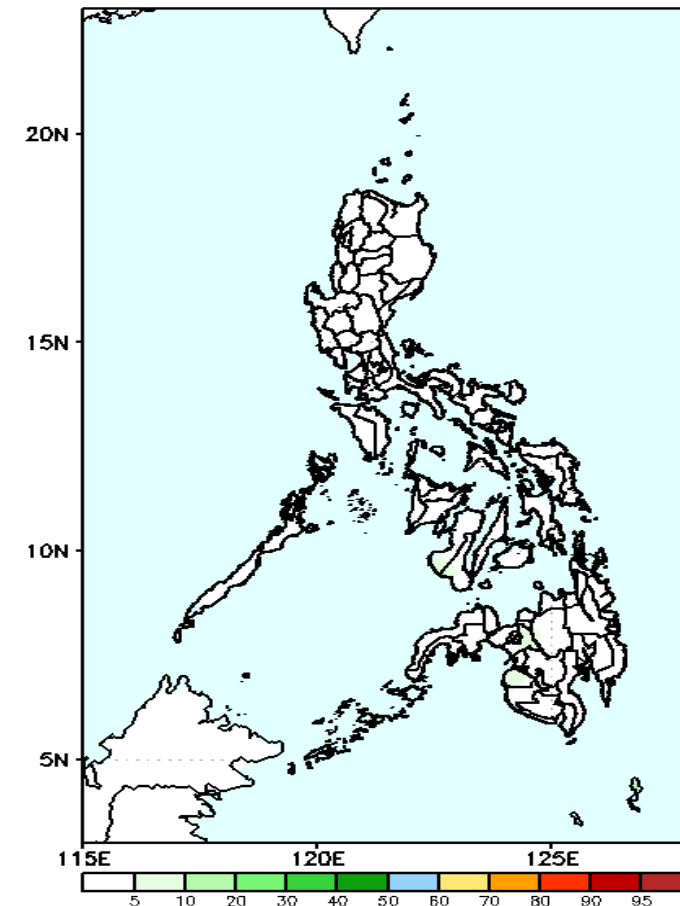
Low probability of rainfall to exceed 100mm in most parts of the country during the forecast period.

GEFS Week-2 Exceedance Prob. > 150mm
Valid: 20220314 - 20220320



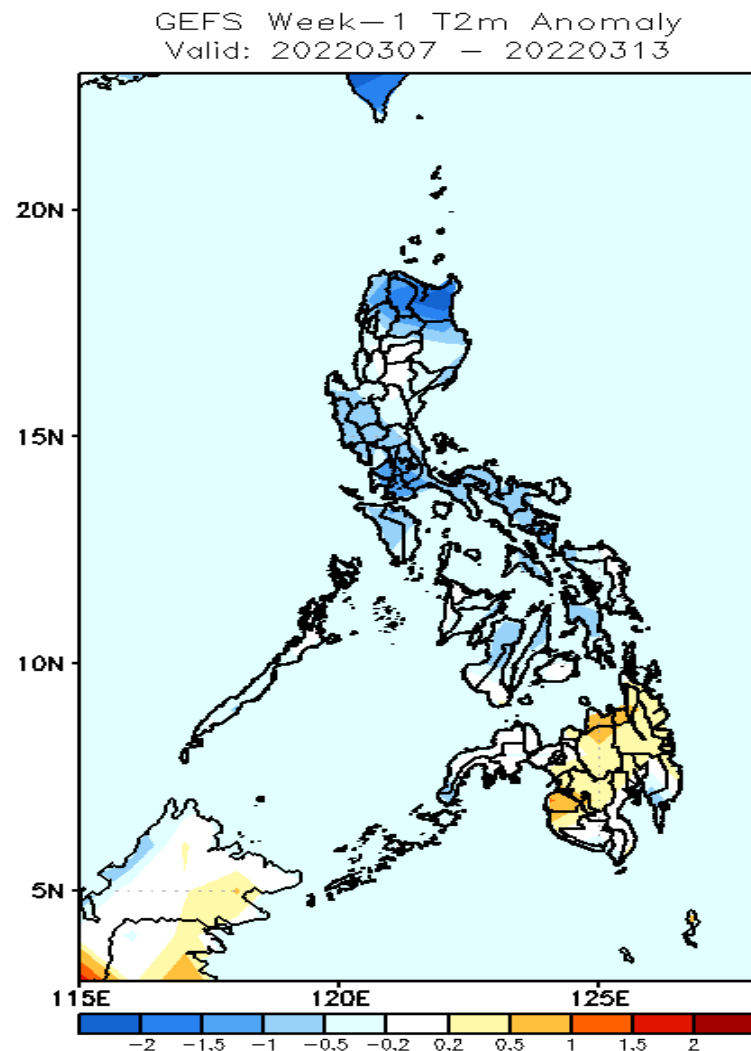
Low probability of rainfall to exceed 150mm in most parts of the country during the forecast period.

GEFS Week-2 Exceedance Prob. > 200mm
Valid: 20220314 - 20220320



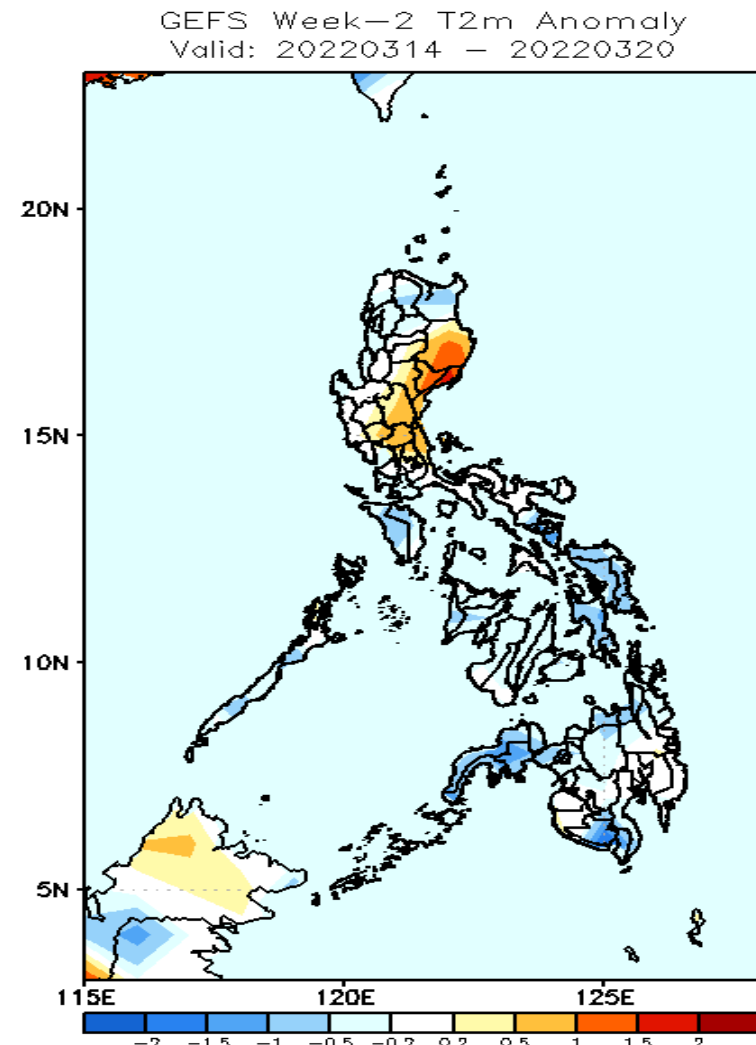
Low probability of rainfall to exceed 200mm in most parts of the country during the forecast period.

GEFS Week-1 & 2 Forecasts: T2m Anomaly



2m Temperature Week 1: Mar 07-13, 2022

Slightly cooler to cooler than average surface air temperature will likely experience in most parts of Luzon and Visayas while slightly warmer to warmer temperature in Mindanao during the forecast period.



2m Temperature Week 2: Mar 14-20, 2022

Average to slightly cooler than average surface air temperature will likely experience in most parts of the country except in most parts of eastern Luzon where slightly warmer to warmer temperature is expected during the forecast period.