



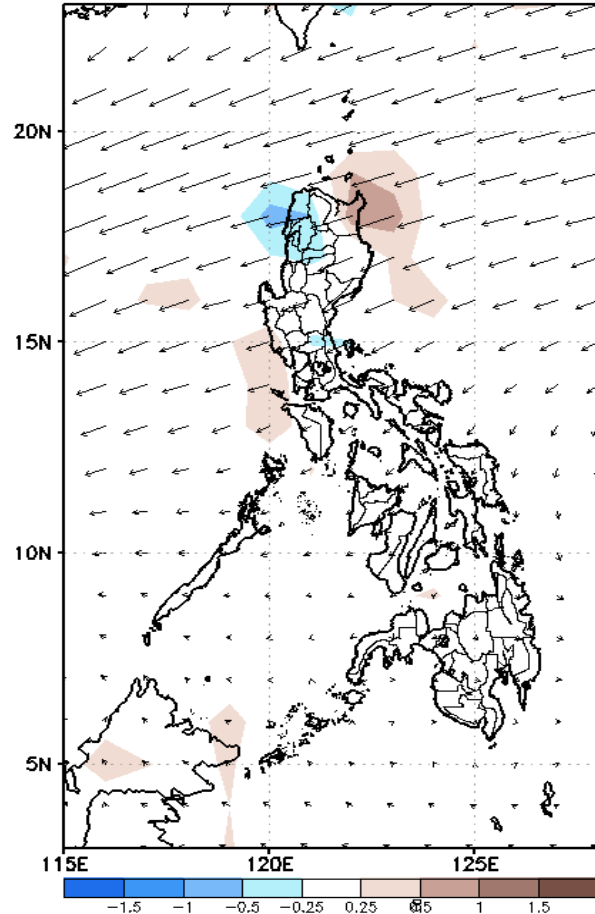
# Week 1 & Week 2 Forecast for the Philippines using GEFS Model



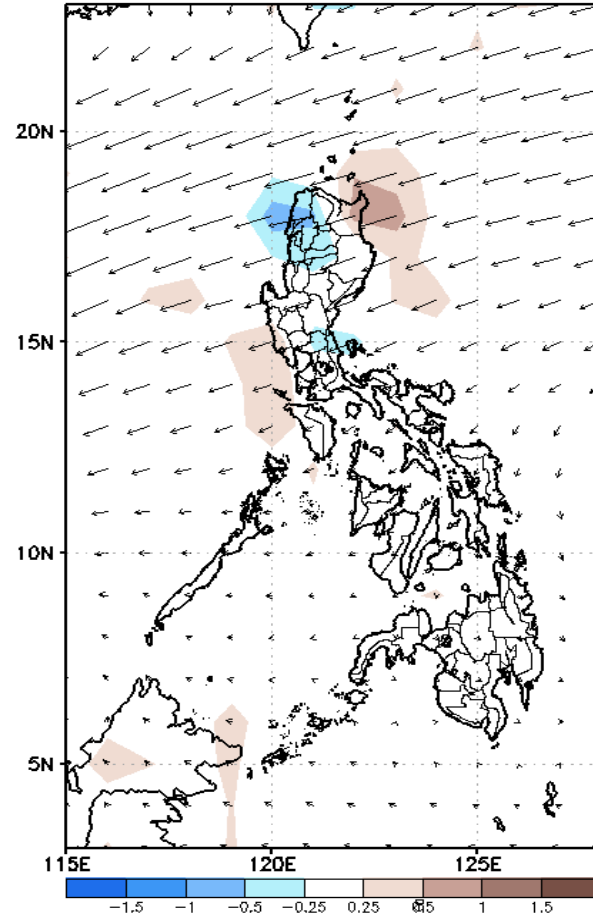
# GEFS Week-1 Forecasts: Wind Anomaly Forecast

Week 1: Oct 7 - Oct 13, 2022

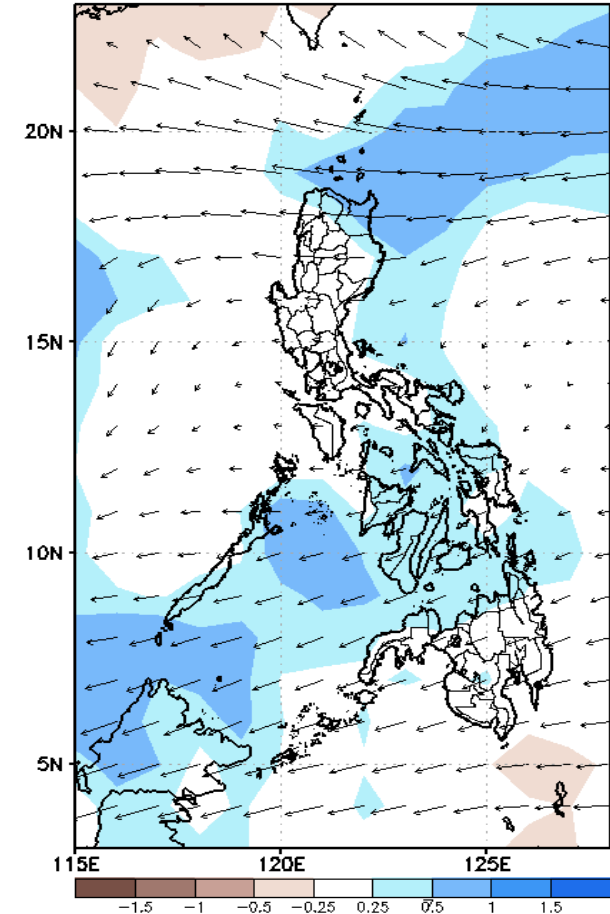
GEFS Week-1 850-hPa Divergence and Wind Anom  
Valid: 20221007 - 20221013



GEFS Week-1 700-hPa Divergence and Wind Anomc  
Valid: 20221007 - 20221013



GEFS Week-1 200-hPa Divergence and Wind Anom  
Valid: 20221007 - 20221013

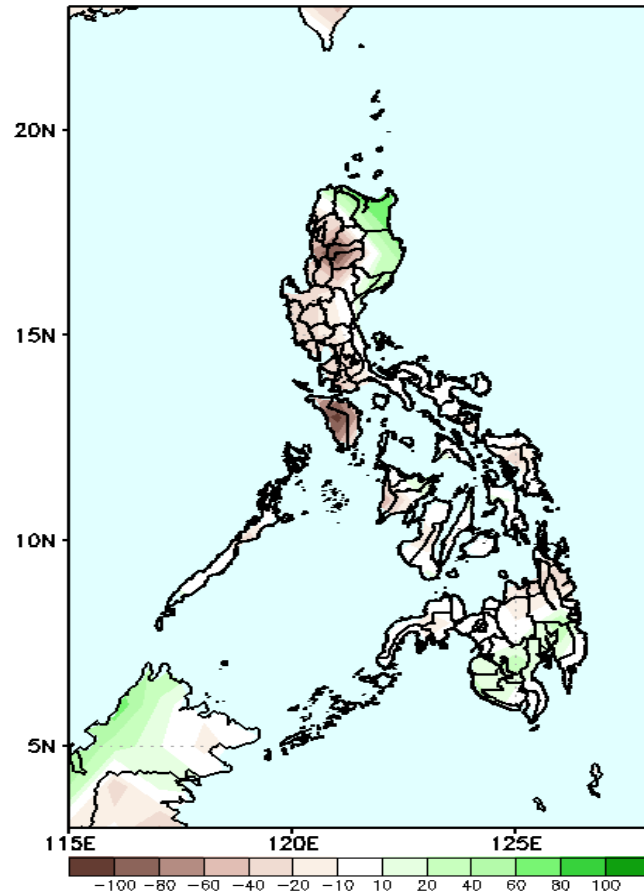


Northeasterly windflow affecting northern and central Luzon. Easterlies affecting the rest of the country during the forecast period.

# Precipitation Anomaly and Exceedance Probability > 25/50 mm

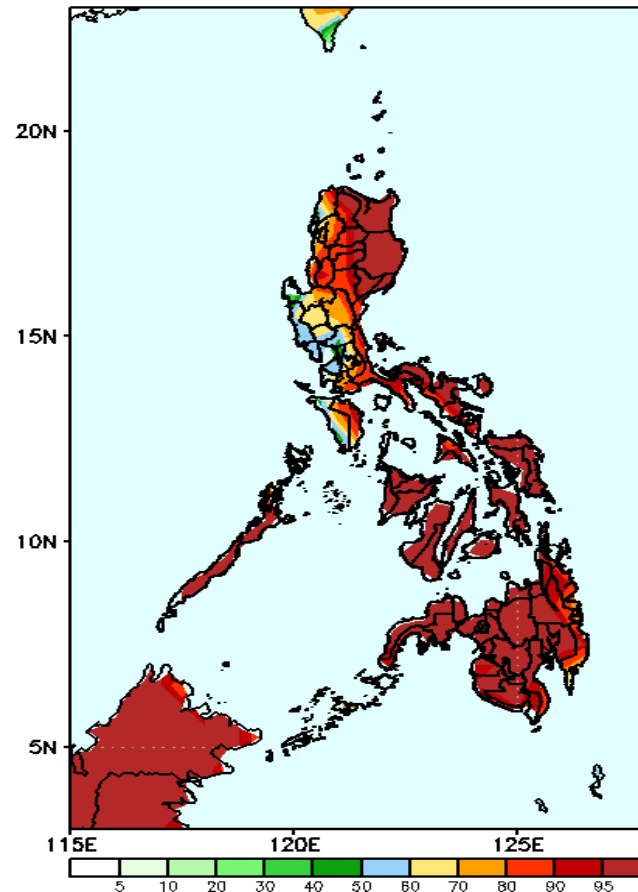
Week 1: Oct 7 - Oct 13, 2022

GEFS Week-1 Precip Anomaly  
Valid: 20221007 - 20221013



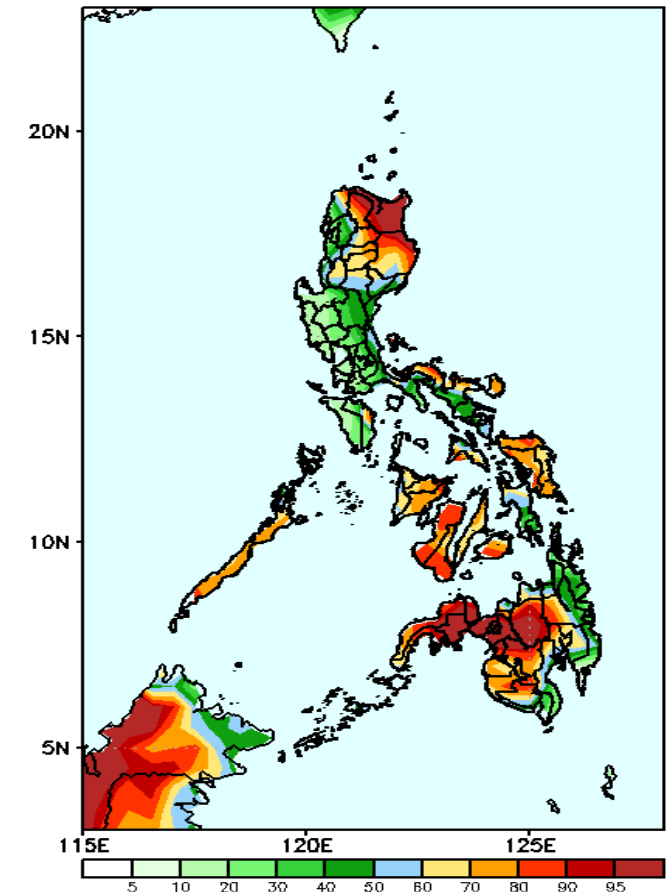
Rainfall deficit of 50-100mm is expected in Ilocos & Cordillera Region and Mindoro, 20-60mm for the rest of the country except in some areas in Cagayan Valley and southern Mindanao (20-60mm increase of rainfall) during the forecast period.

GEFS Week-1 Exceedance Prob. > 25mm  
Valid: 20221007 - 20221013



High probability of rainfall to exceed 25mm in most parts of the country during the forecast period.

GEFS Week-1 Exceedance Prob. > 50mm  
Valid: 20221007 - 20221013

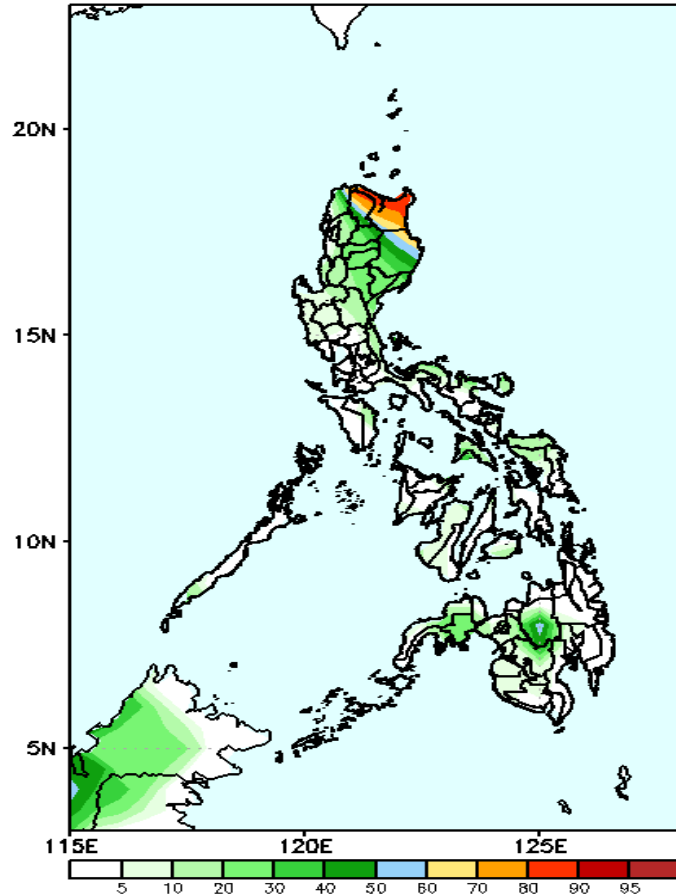


High probability of rainfall to exceed 50mm in Apayao, Cagayan, Isabela, Palawan, Visayas (except Leyte provinces) and western and central Mindanao and some areas in Cordillera & Bicol Region during the forecast period.

# Exceedance Probability > 100/150/200 mm

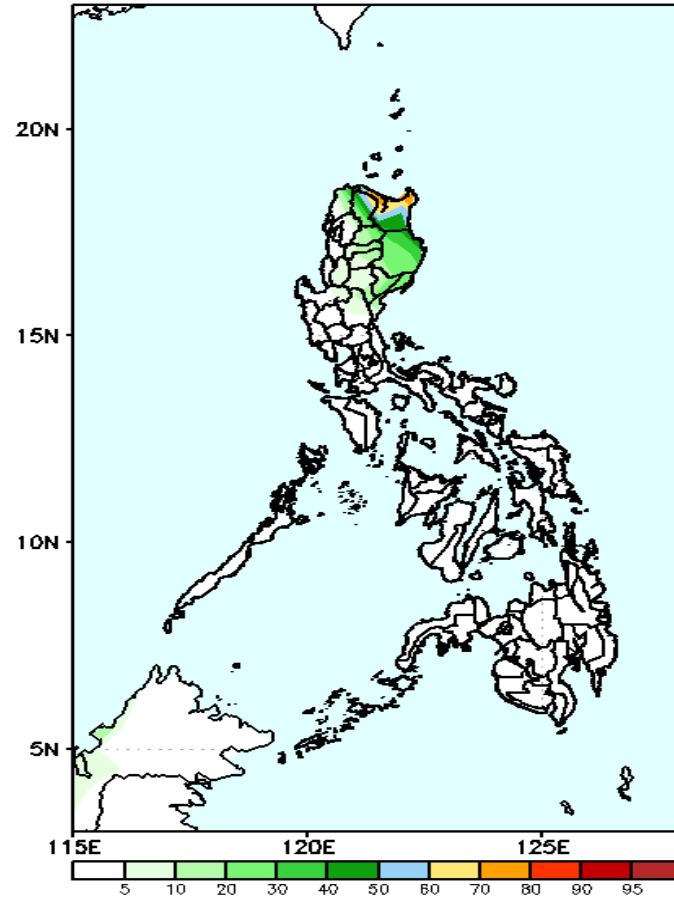
Week 1: Oct 7 - Oct 13, 2022

GEFS Week-1 Exceedance Prob. > 100mm  
Valid: 20221007 - 20221013



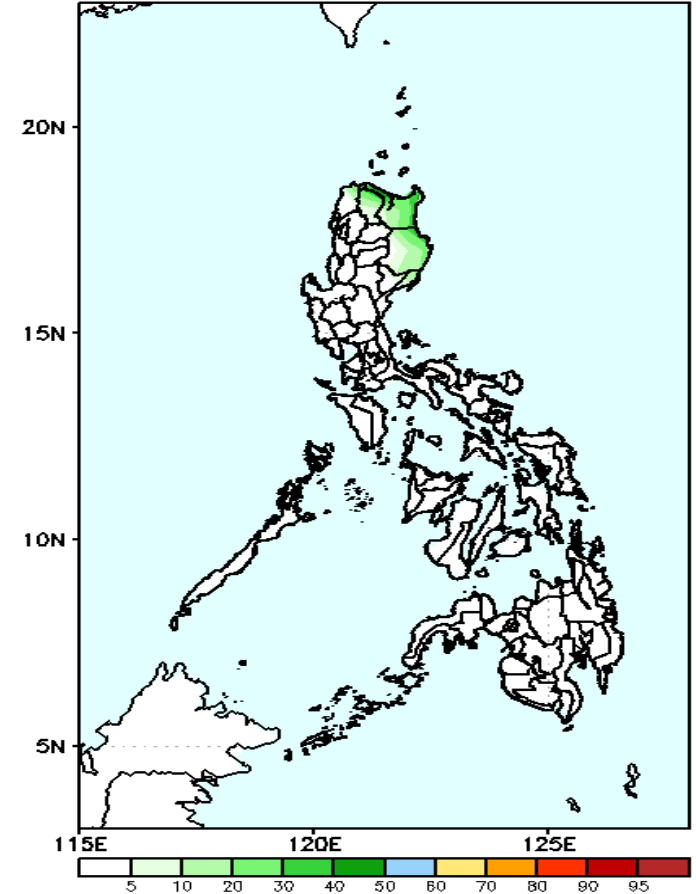
60-90% probability of rainfall to exceed 100mm in Apayao and Cagayan while less likely for the rest of the country during the forecast period.

GEFS Week-1 Exceedance Prob. > 150mm  
Valid: 20221007 - 20221013



Low probability of rainfall to exceed 150mm in most parts of the country during the forecast period.

GEFS Week-1 Exceedance Prob. > 200mm  
Valid: 20221007 - 20221013

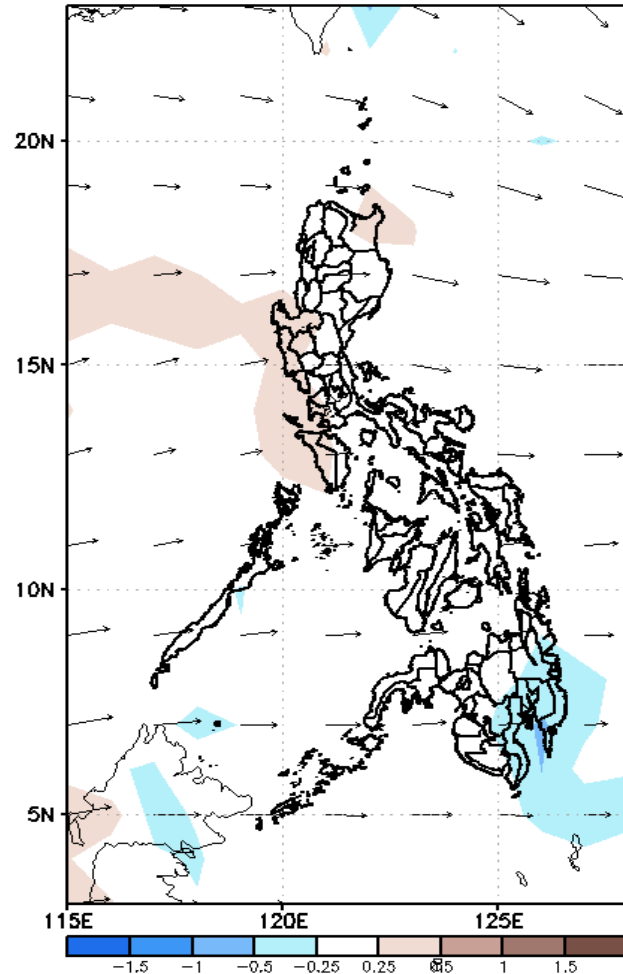


Low probability of rainfall to exceed 200mm in most parts of the country during the forecast period.

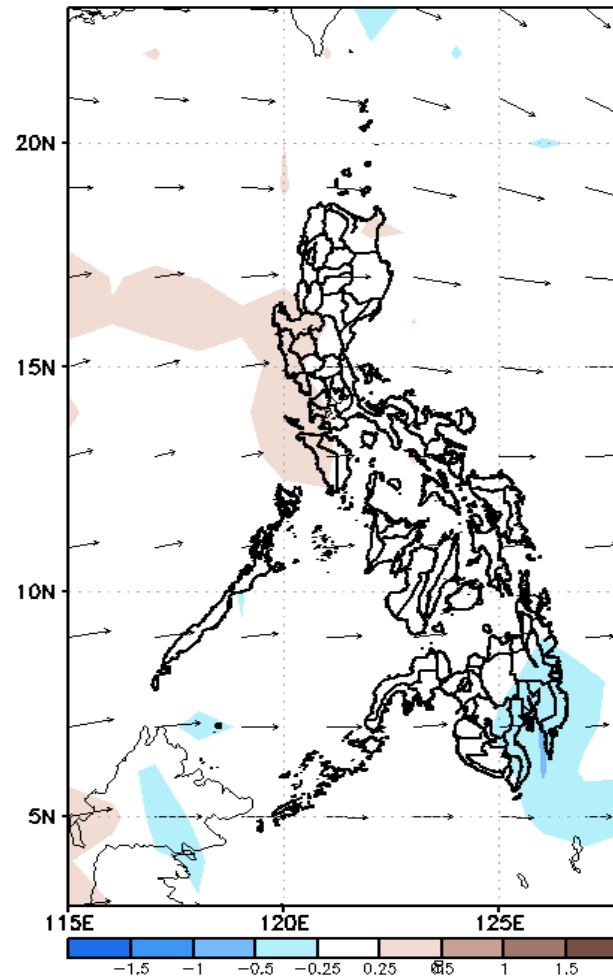
# GEFS Week-2 Forecasts: Wind Anomaly Forecast

Week 2: Oct 14 - Oct 20, 2022

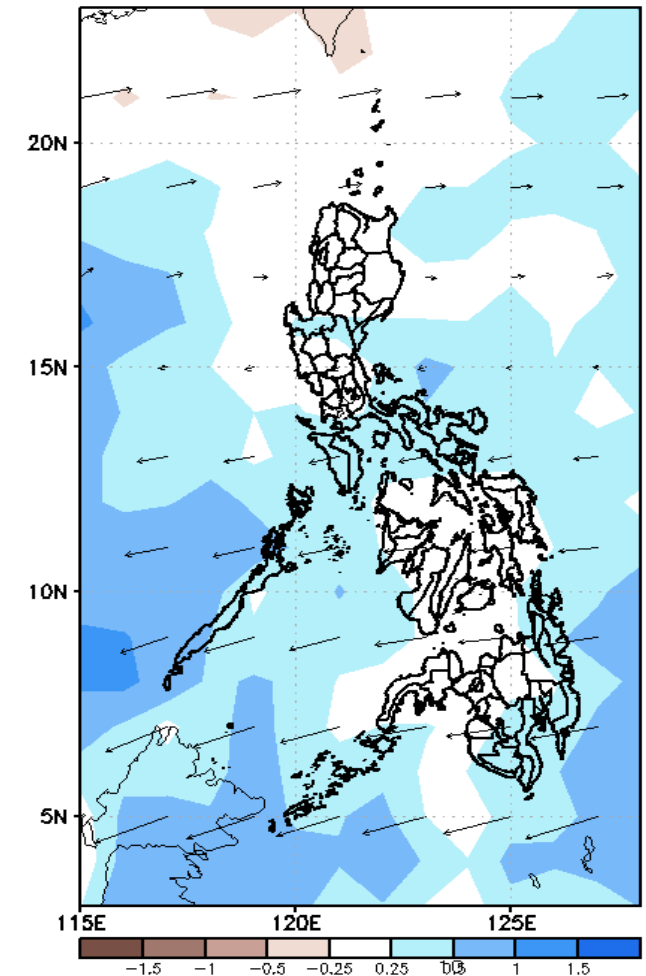
GEFS Week-2 850-hPa Divergence and Wind Anom  
Valid: 20221014 - 20221020



GEFS Week-2 700-hPa Divergence and Wind Anom  
Valid: 20221014 - 20221020



GEFS week-2 200-hPa Divergence and Wind Anom  
Valid: 20221014 - 20221020



Westerly windflow affecting most parts of the country during the forecast period.

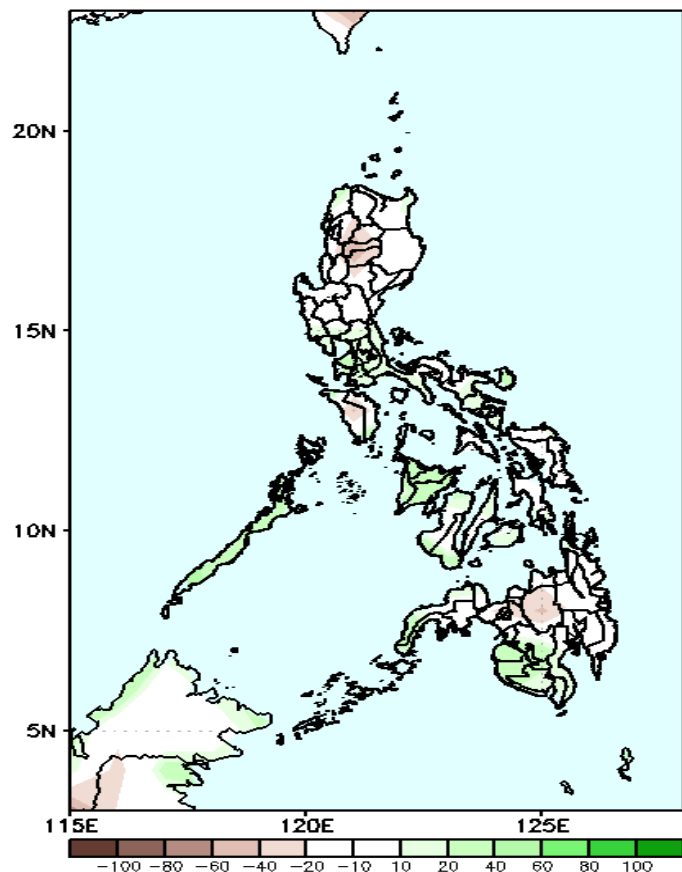
Payong  
PAGASA



# Precipitation Anomaly and Exceedance Probability > 25/50 mm

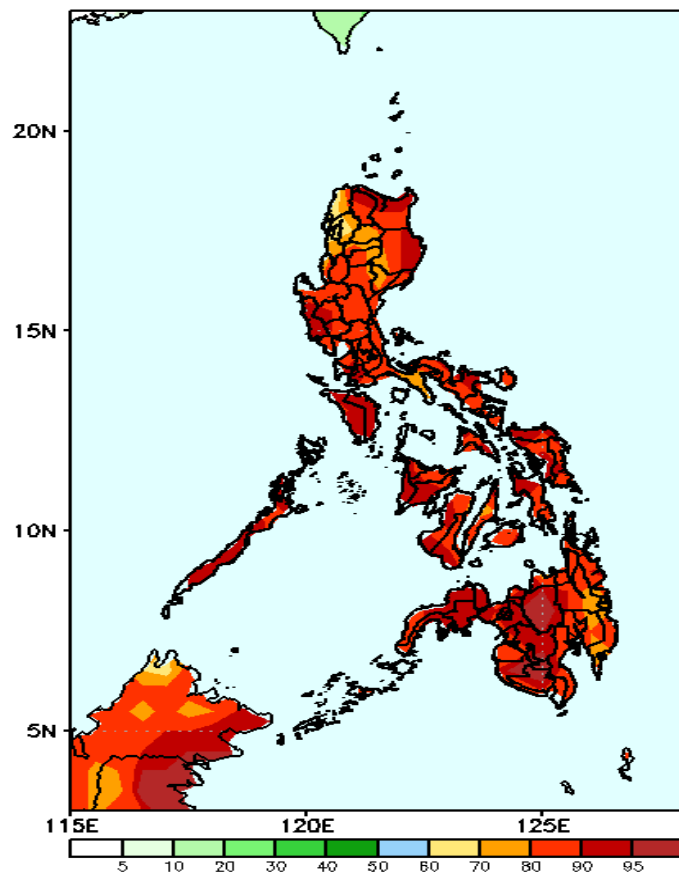
Week 2: Oct 14 - Oct 20, 2022

GEFS Week-2 Precip Anomaly  
Valid: 20221014 - 20221020



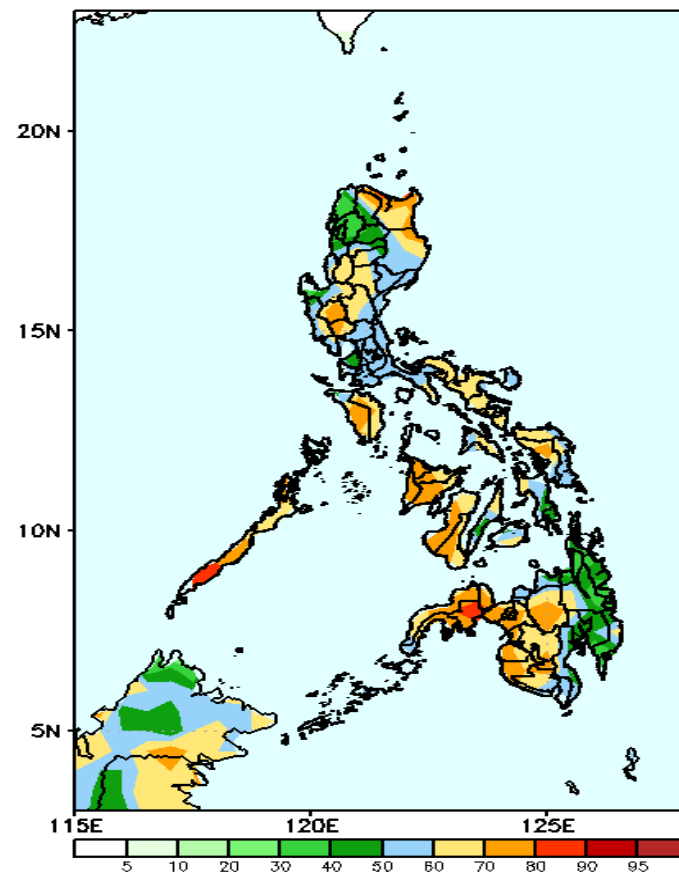
Increase of rainfall of 20-60mm is expected in Palawan, Panay Island, Catanduanes and western Mindanao while rainfall deficit of 20-40mm in some parts of Cordillera Region, Mindoro and Bukidnon is expected during the forecast period.

GEFS Week-2 Exceedance Prob. > 25mm  
Valid: 20221014 - 20221020



High probability of rainfall to exceed 25mm in most parts of the country during the forecast period.

GEFS Week-2 Exceedance Prob. > 50mm  
Valid: 20221014 - 20221020



60-85% probability of rainfall to exceed 50mm in most parts of the country during the forecast period

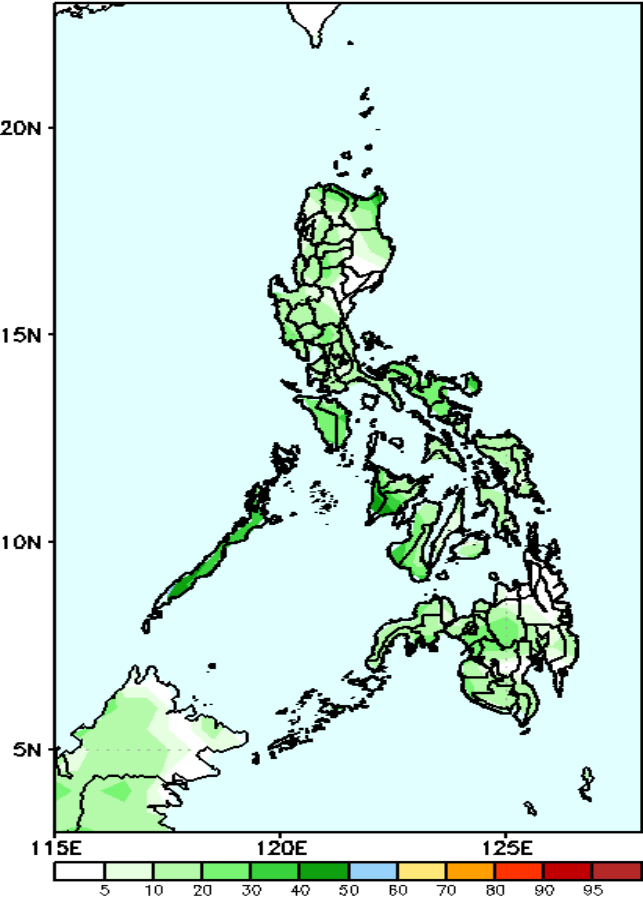




# Exceedance Probability > 100/150/200 mm

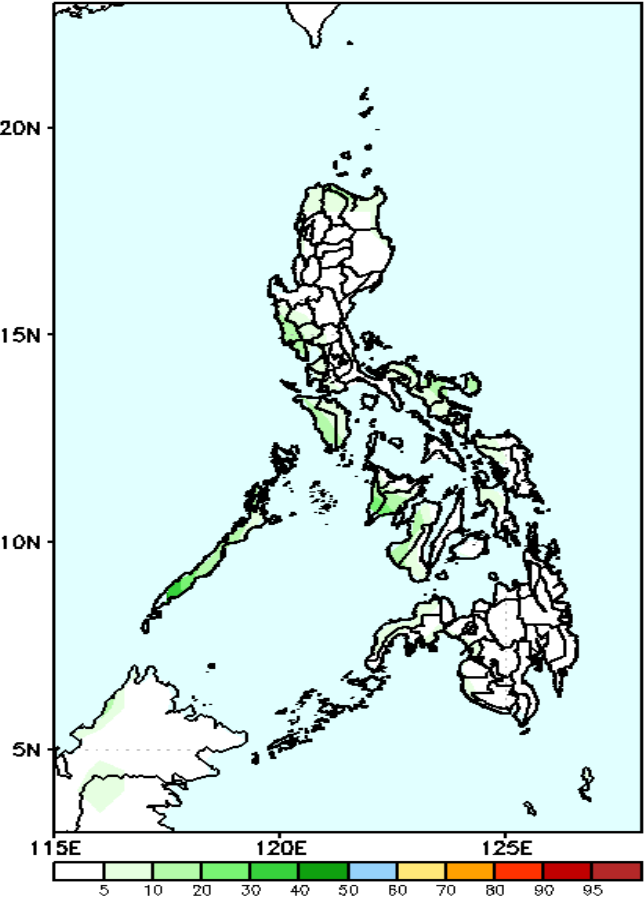
Week 2: Oct 14 - Oct 20, 2022

GEFS Week-2 Exceedance Prob. > 100mm  
Valid: 20221014 - 20221020



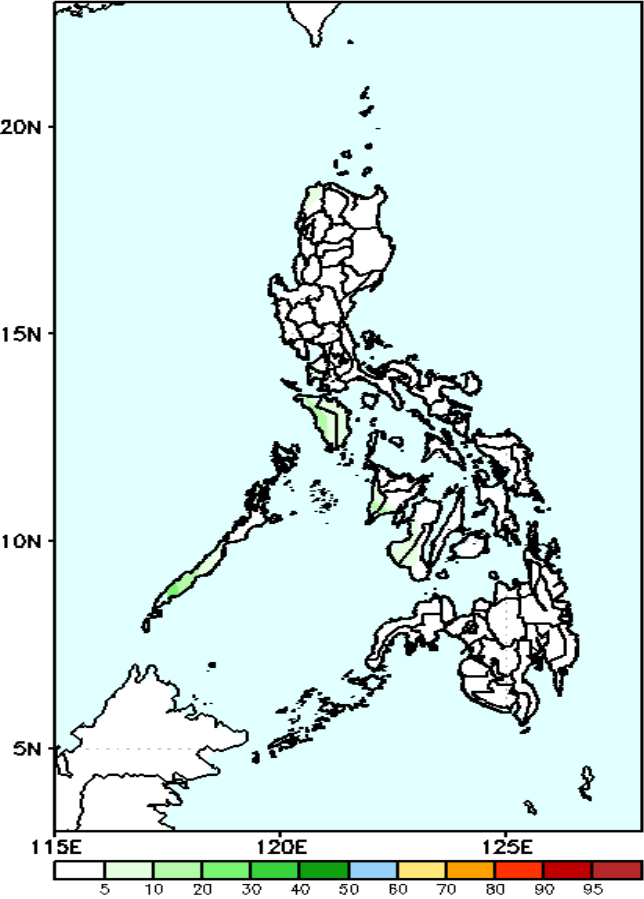
Low probability of rainfall to exceed 100mm in most parts of the country during the forecast period.

GEFS Week-2 Exceedance Prob. > 150mm  
Valid: 20221014 - 20221020



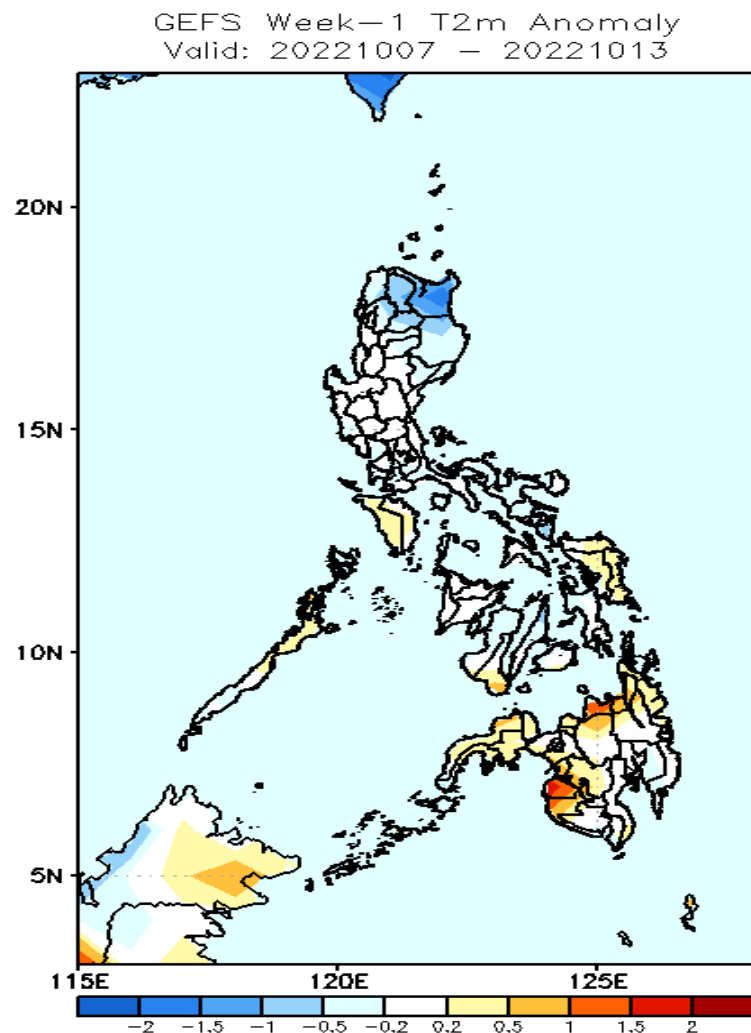
Low probability of rainfall to exceed 150mm in most parts of the country during the forecast period.

GEFS Week-2 Exceedance Prob. > 200mm  
Valid: 20221014 - 20221020



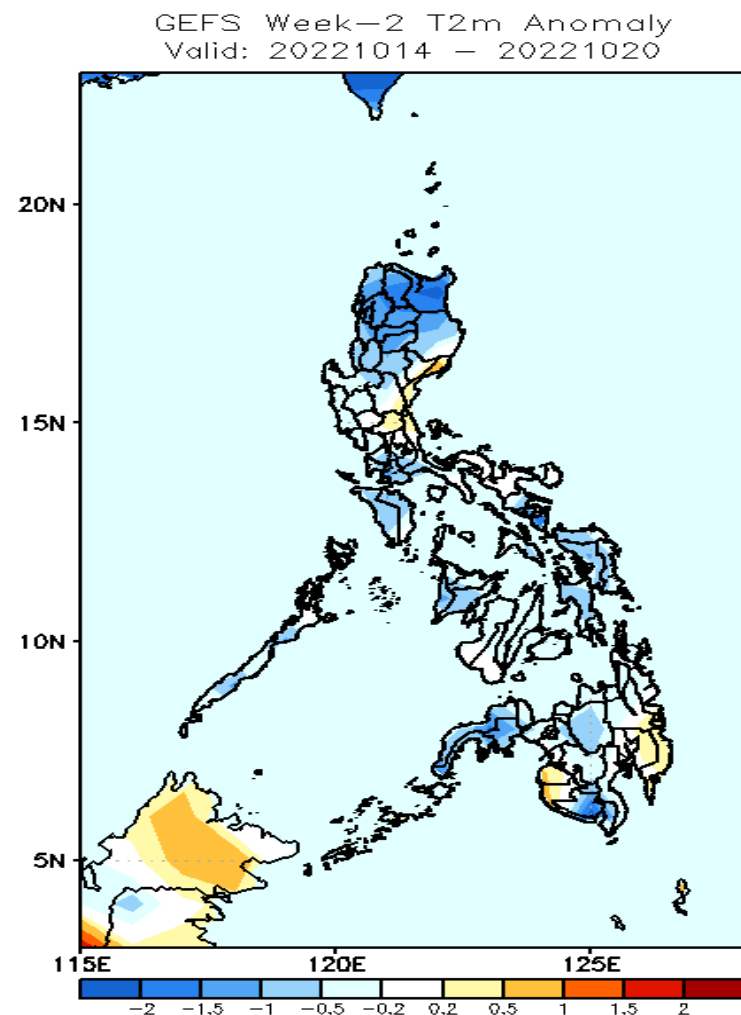
Low probability of rainfall to exceed 200mm in most parts of the country during the forecast period.

# GEFS Week-1 & 2 Forecasts: T2m Anomaly



## 2m Temperature Week 1: Oct 7 - Oct 13, 2022

Near to warmer than average surface air temperature will likely experience in most parts of the country except in Apayao & Cagayan where cooler than temperature is expected during the forecast period during the forecast period.



## 2m Temperature Week 2: Oct 14 - Oct 20, 2022

Slightly cooler than average surface air temperature will likely experience in most parts of the country except in some areas in Central Luzon, Maguindanao, Sultan Kudarat and Davao Region where near to slightly warmer than average surface air temperature is expected during the forecast period.